

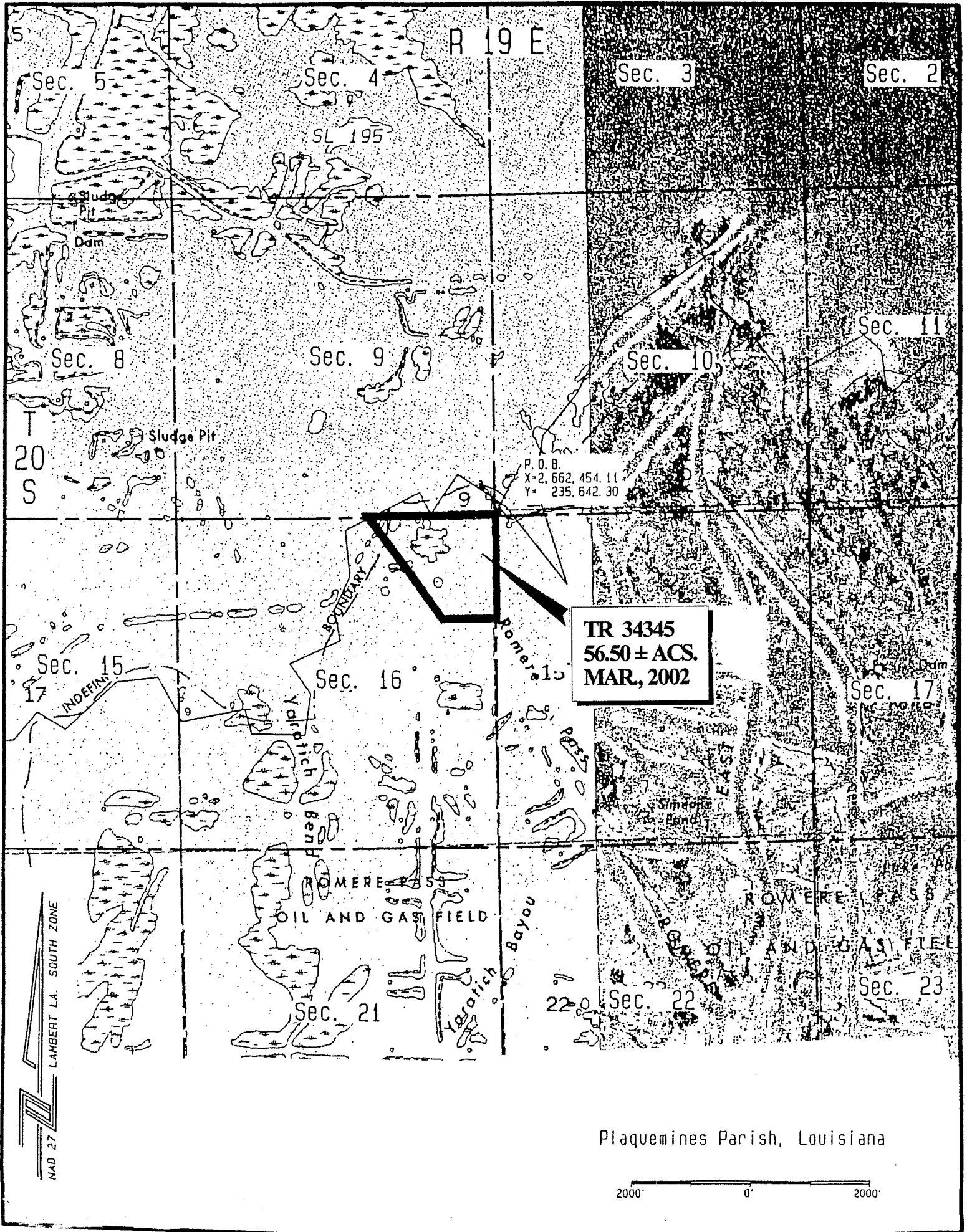
be subsequently modified, cancelled or abrogated due to the existence of conflicting leases, operating agreements, private claims or other existing of future obligations or conditions which may affect all or any portion of the leased tract, it shall not relieve the Lessee of the obligation to pay any bonus due thereon to the Louisiana State Mineral Board, nor shall the Louisiana State Mineral Board be obligated to refund any consideration paid by the Lessee prior to such modification, cancellation, or abrogation, including, but not limited to, bonuses, rents and royalties.

NOTE: The above tract is located in or near an oyster restricted area and all operations in such area must be conducted in strict conformity with the stipulations and/or regulations of the Louisiana Department of Wildlife and Fisheries.

NOTE: The State of Louisiana does hereby reserve, and this lease shall be subject to, the imprescriptible right of surface use in the nature of a servitude in favor of the Department of Natural Resources, including its Offices and Commissions, for the sole purpose of implementing, constructing, servicing and maintaining approved coastal zone management and/or restoration projects. Utilization of any and all rights derived under this lease by the mineral lessee, its agents, successors or assigns, shall not interfere with nor hinder the reasonable surface use by the Department of Natural Resources, its Offices or Commissions, as hereinabove reserved.

Applicant: Cypress Energy Corporation to Agency and by Resolution from the Plaquemines Parish School Board authorizing the Mineral Board to act in its behalf.

Bidder	Cash Payment	Price / Acre	Rental	Oil	Gas	Other



TR 3435
56.50 ± ACS.
MAR, 2002

P. O. B.
X=2,662,454.11
Y=235,642.30

Plaquemines Parish, Louisiana

2000' 0' 2000'

NAD 27 - LAMBERT LA. SOUTH ZONE

649

TRACT 34346 - WITHDRAWN PER APPLICANT

TRACT 34347 - Plaquemines Parish, Louisiana

All of the lands now or formerly constituting the beds and bottoms of all water bodies of every nature and description and all islands and other lands formed by accretion or reliction, except tax lands, owned by and not under mineral lease from the State of Louisiana on March 13, 2002, situated in Plaquemines Parish, Louisiana, within the following described boundaries: Beginning at a Southeast corner of State Lease No. 17236 having Coordinates of X = 2,637,060.59 and Y = 257,831.45; thence South 02 degrees 08 minutes 31 seconds East 620.00 feet to a point having Coordinates of X = 2,637,083.77 and Y = 257,211.89; thence South 87 degrees 51 minutes 33 seconds West 1,320.00 feet to a point having Coordinates of X = 2,635,764.69 and Y = 257,162.58; thence South 02 degrees 08 minutes 27 seconds East 303.08 feet to a point on the Northerly boundary of Operating Agreement No. 261 having Coordinates of X = 2,635,776.01 and Y = 256,859.71; thence South 87 degrees 51 minutes 33 seconds West 2,603.09 feet along the Northerly boundary of said Operating Agreement No. 261 to a point having Coordinates of X = 2,633,174.74 and Y = 256,762.47; thence North 19 degrees 49 minutes 27 seconds East 995.33 feet to a point having Coordinates of X = 2,633,512.29 and Y = 257,698.81; thence North 87 degrees 51 minutes 33 seconds East 910.78 feet to a point; thence South 02 degrees 08 minutes 27 seconds East 320.00 feet to a point; thence North 87 degrees 51 minutes 33 seconds East 1,320.00 feet to a point; thence North 02 degrees 08 minutes 27 seconds West 320.00 feet to a point; thence North 87 degrees 51 minutes 33 seconds East 1,320.00 feet to the point of beginning, containing approximately **60.31 gross acres and 24.12 net acres**, as shown outlined on a plat on file in the Office of Mineral Resources, Department of Natural Resources, as provided by the applicant. All bearings, distances and coordinates are based on Louisiana Coordinate System of 1927 (South Zone).

NOTE: The above description of the tract nominated for lease has been provided exclusively by the party nominating the tract for lease. The Louisiana State Mineral Board makes no representation as to the accuracy of the description of the nominated tract or its suitability for lease. The Louisiana State Mineral Board has made no inspection of the nominated tract for the existence of conflicting leases, operating agreements, private claims or other existing or future obligations or conditions which may affect all or any portion of the nominated tract or its suitability for lease.

Maps depicting the nominated tract, containing the bearings, distances and coordinates of the nominated tract based on the Louisiana Coordinate System of 1927, North or South Zone, as applicable, are available for public inspection and review at the offices of the Louisiana State Mineral Board from 10:00 a.m. to 3:00 p.m. Monday - Friday.

In the event of conflict between the description of the nominated tract set forth above and the description of the nominated property as contained on the maps maintained at the offices of the Louisiana State Mineral Board, the Louisiana State Mineral Board maps shall prevail and shall provide the final property description of the lease to be awarded of the nominated tract.

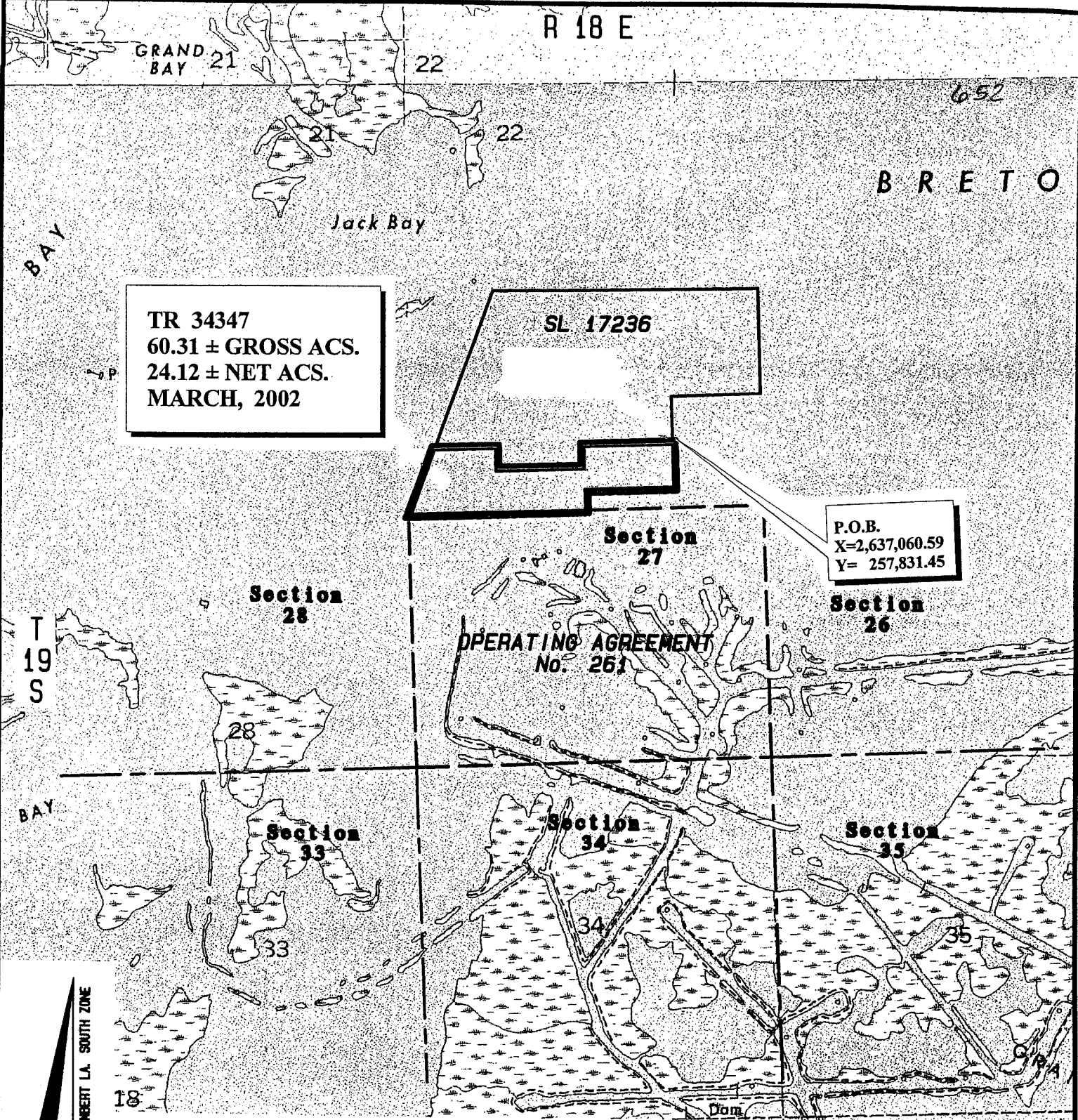
Any mineral lease of the nominated tract by the Louisiana State Mineral Board shall be without warranty of any kind, either express, implied, or statutory, including, but not limited to, the implied warranties or merchantability and fitness for a particular purpose. Should the mineral lease of the nominated tract awarded by the Louisiana State Mineral Board be subsequently modified, cancelled or abrogated due to the existence of conflicting leases, operating agreements, private claims or other existing of future obligations or conditions which may affect all or any portion of the leased tract, it shall not relieve the Lessee of the obligation to pay any bonus due thereon to the Louisiana State Mineral Board, nor shall the Louisiana State Mineral Board be obligated to refund any consideration paid by the Lessee prior to such modification, cancellation, or abrogation, including, but not limited to, bonuses, rents and royalties.

NOTE: The above tract is located in or near an oyster restricted area and all operations in such area must be conducted in strict conformity with the stipulations and/or regulations of the Louisiana Department of Wildlife and Fisheries.

NOTE: The State of Louisiana does hereby reserve, and this lease shall be subject to, the imprescriptible right of surface use in the nature of a servitude in favor of the Department of Natural Resources, including its Offices and Commissions, for the sole purpose of implementing, constructing, servicing and maintaining approved coastal zone management and/or restoration projects. Utilization of any and all rights derived under this lease by the mineral lessee, its agents, successors or assigns, shall not interfere with nor hinder the reasonable surface use by the Department of Natural Resources, its Offices or Commissions, as hereinabove reserved.

Applicant: Harold J. Anderson, Inc.

Bidder	Cash Payment	Price / Acre	Rental	Oil	Gas	Other

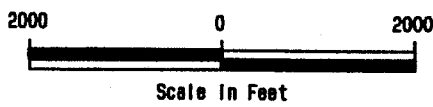


TR 34347
 60.31 ± GROSS ACS.
 24.12 ± NET ACS.
 MARCH, 2002

P.O.B.
 X=2,637,060.59
 Y= 257,831.45

REVISED:

Plaquemines Parish, Louisiana



TRACT 34348 - Lafourche Parish, Louisiana

All of the lands now or formerly constituting the beds and bottoms of all water bodies of every nature and description and all islands and other lands formed by accretion or reliction, except tax lands, owned by and not under mineral lease from the State of Louisiana on March 13, 2002, situated in Lafourche Parish, Louisiana, within the following described boundaries: Beginning at a point having Coordinates of X = 2,253,700.00 and Y = 325,000.00; thence North 7,000.00 feet to a point; thence East 8,500.00 feet; thence South 7,000.00 feet; thence West 8,500.00 feet to the point of beginning, **LESS AND EXCEPT** that portion of State Lease No. 328, as amended, that may lie within the above described tract, containing approximately **429 acres**, as shown outlined on a plat on file in the Office of Mineral Resources, Department of Natural Resources, as provided by the applicant. All bearings, distances and coordinates are based on Louisiana Coordinate System of 1927 (South Zone).

NOTE: The above description of the tract nominated for lease has been provided exclusively by the party nominating the tract for lease. The Louisiana State Mineral Board makes no representation as to the accuracy of the description of the nominated tract or its suitability for lease. The Louisiana State Mineral Board has made no inspection of the nominated tract for the existence of conflicting leases, operating agreements, private claims or other existing or future obligations or conditions which may affect all or any portion of the nominated tract or its suitability for lease.

Maps depicting the nominated tract, containing the bearings, distances and coordinates of the nominated tract based on the Louisiana Coordinate System of 1927, North or South Zone, as applicable, are available for public inspection and review at the offices of the Louisiana State Mineral Board from 10:00 a.m. to 3:00 p.m. Monday - Friday.

In the event of conflict between the description of the nominated tract set forth above and the description of the nominated property as contained on the maps maintained at the offices of the Louisiana State Mineral Board, the Louisiana State Mineral Board maps shall prevail and shall provide the final property description of the lease to be awarded of the nominated tract.

Any mineral lease of the nominated tract by the Louisiana State Mineral Board shall be without warranty of any kind, either express, implied, or statutory, including, but not limited to, the implied warranties or merchantability and fitness for a particular purpose. Should the mineral lease of the nominated tract awarded by the Louisiana State Mineral Board be subsequently modified, cancelled or abrogated due to the existence of conflicting leases, operating agreements, private claims or other existing of future obligations or conditions which may affect all or any portion of the leased tract, it shall not relieve the Lessee of the obligation to pay any bonus due thereon to the Louisiana State Mineral Board, nor shall the Louisiana State Mineral Board be obligated to refund any consideration paid by the Lessee prior to such modification,

cancellation, or abrogation, including, but not limited to, bonuses, rents and royalties.

NOTE: The State of Louisiana does hereby reserve, and this lease shall be subject to, the imprescriptible right of surface use in the nature of a servitude in favor of the Department of Natural Resources, including its Offices and Commissions, for the sole purpose of implementing, constructing, servicing and maintaining approved coastal zone management and/or restoration projects. Utilization of any and all rights derived under this lease by the mineral lessee, its agents, successors or assigns, shall not interfere with nor hinder the reasonable surface use by the Department of Natural Resources, its Offices or Commissions, as hereinabove reserved.

Applicant: Silver Oak Minerals, Inc.

Bidder	Cash Payment	Price / Acre	Rental	Oil	Gas	Other

T 17 S - R 19 E

655
149

Bayou

LAKE LONG

NEANDER LINK

State Lease 328

LONG

Drill Holes

GAS FIELD

EAST LINE S.L. 328 AS AMENDED

TR 3438
429 +/- ACS.
MARCH, 2002

INTRACOASTAL WATERWAY

CANAL

Drill Hole

Bayou

Blue

T 17 S
T 18 S

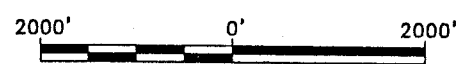


LAMBERT GRID NORTH
NAD 1927 LA. S.Z.

POB
X= 2,253,700.00'
Y= 325,000.00'

TOPOGRAPHY OBTAINED FROM USCGS QUADRANGLE
"BOURG, LA" 1963 - PHOTOREVISED 1974.

LAFORCHE PARISH, LOUISIANA



SCALE IN FEET