

STATE AGENCY

TRACTS

TRACT 34339 - STATE AGENCY - Sabine Parish, Louisiana

A certain tract of land belonging to and not under mineral lease from the Sabine Parish Police Jury, on March 13, 2002, being more fully described as follows: Beginning at a point having Coordinates of X = 1,602,000.00 and Y = 415,000.00; thence South 11,000.00 feet to a point; thence West 2,700.00 feet to a point; thence North 38 degrees 09 minutes 26 seconds West 14,243.60 feet to a point having Coordinates of X = 1,590,500.00 and Y = 415,200.00; thence East 6,100.00 feet to a point; thence South 200.00 feet to a point; thence East 5,400.00 feet to the point of beginning, excluding beds and bottoms of all navigable waters, containing approximately 14 acres, as shown outlined on a plat on file in the Office of Mineral Resources, Department of Natural Resources, as provided by the applicant. All bearings, distances and coordinates are based on Louisiana Coordinate System of 1927 (South Zone).

NOTE: The above description of the tract nominated for lease has been provided exclusively by the party nominating the tract for lease. The Louisiana State Mineral Board makes no representation as to the accuracy of the description of the nominated tract or its suitability for lease. The Louisiana State Mineral Board has made no inspection of the nominated tract for the existence of conflicting leases, operating agreements, private claims or other existing or future obligations or conditions which may affect all or any portion of the nominated tract or its suitability for lease.

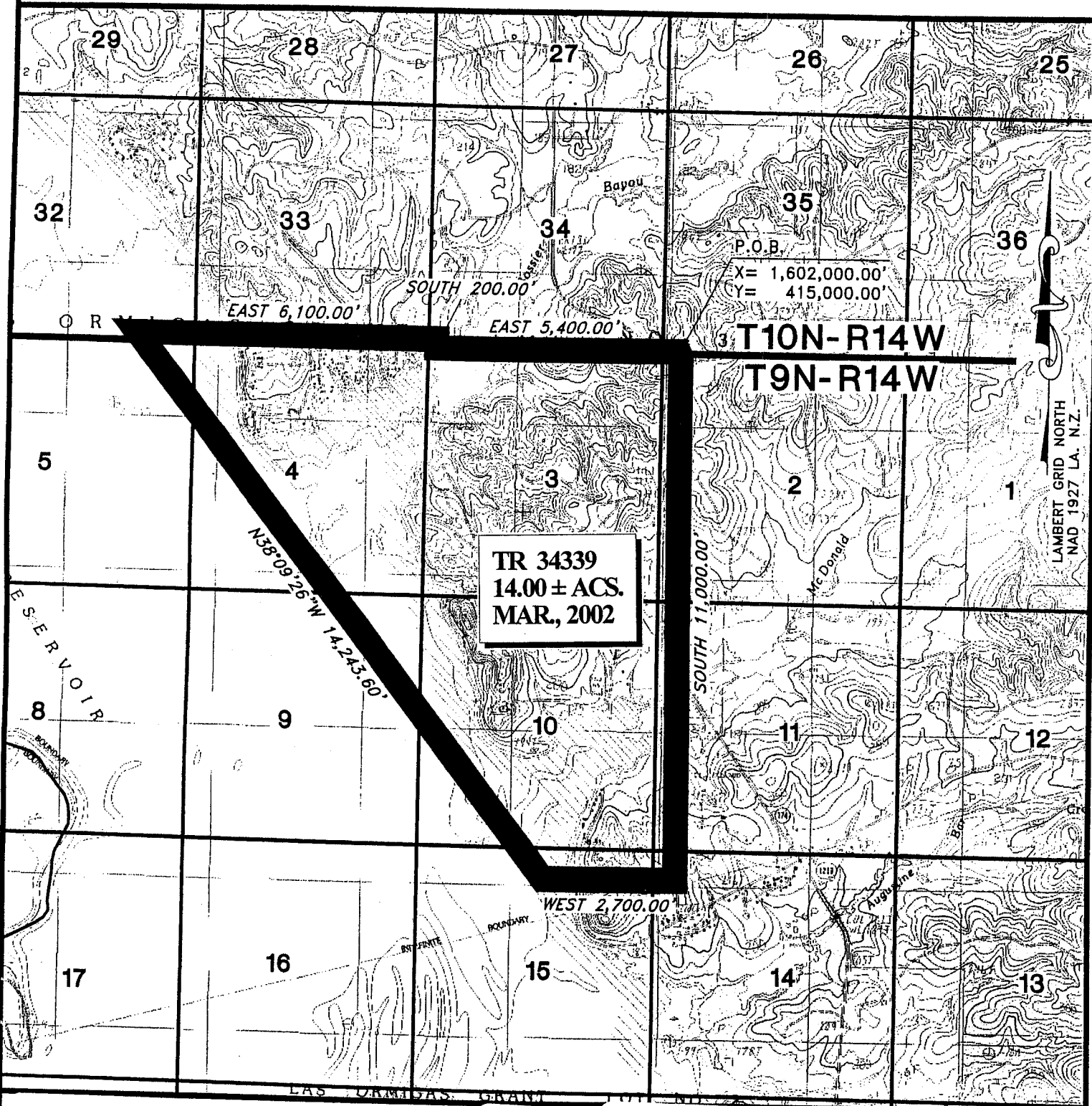
Maps depicting the nominated tract, containing the bearings, distances and coordinates of the nominated tract based on the Louisiana Coordinate System of 1927, North or South Zone, as applicable, are available for public inspection and review at the offices of the Louisiana State Mineral Board from 10:00 a.m. to 3:00 p.m. Monday - Friday.

In the event of conflict between the description of the nominated tract set forth above and the description of the nominated property as contained on the maps maintained at the offices of the Louisiana State Mineral Board, the Louisiana State Mineral Board maps shall prevail and shall provide the final property description of the lease to be awarded of the nominated tract.

Any mineral lease of the nominated tract by the Louisiana State Mineral Board shall be without warranty of any kind, either express, implied, or statutory, including, but not limited to, the implied warranties or merchantability and fitness for a particular purpose. Should the mineral lease of the nominated tract awarded by the Louisiana State Mineral Board be subsequently modified, cancelled or abrogated due to the existence of conflicting leases, operating agreements, private claims or other existing of future obligations or conditions which may affect all or any portion of the leased tract, it shall not relieve the Lessee of the obligation to pay any bonus due thereon to the Louisiana State Mineral Board, nor shall the Louisiana State Mineral Board be obligated to refund any consideration paid by the Lessee prior to such modification, cancellation, or abrogation, including, but not limited to, bonuses, rents and royalties.

Applicant: Upstream Energy, Inc. to Agency and by Resolution from the Sabine Parish Police Jury authorizing the Mineral Board to act in its behalf.

Bidder	Cash Payment	Price / Acre	Rental	Oil	Gas	Other



T10N-R14W

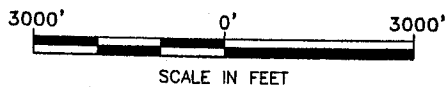
T9N-R14W

TR 34339
14.00 ± ACS.
MAR, 2002

P.O.B.
X= 1,602,000.00'
Y= 415,000.00'

LAMBERT GRID NORTH
NAD 1927 LA. N.Z.

SABINE PARISH, LOUISIANA



TRACT 34340 - STATE AGENCY - LaSalle and Rapides Parishes, Louisiana

The State Mineral Board acting on behalf of the LaSalle Parish School Board and the Rapides Parish School Board, pursuant to Resolutions adopted by those bodies and in accordance with Louisiana Revised Statutes 30:121-136 and 151-156, as amended, and Article 12, Section 18 of the Louisiana Constitution of 1921, as amended, which by Section 16 (A) 9, and 16 (B) of Article XIV of the 1974 Constitution is continued as a statute subject to arrangement in proper statutory form or modification provided by law, advertises the following described lands not under mineral lease on March 13, 2002: That portion of Section 16, Township 5 North, Range 3 East, located in both Rapides and LaSalle Parishes and more particularly described as follows: The Northwest Quarter, the North Half of Northeast Quarter and the Southwest Quarter of the Northeast Quarter, said township situated in LaSalle and Rapides Parishes, Louisiana, excluding beds and bottoms of all navigable waters located in said section, **LESS AND EXCEPT** that portion of the Saline Wildlife Management Area that may lie within the above described tract, containing approximately **280.0 acres**, as shown outlined on a plat on file in the Office of Mineral Resources, Department of Natural Resources. All bearings, distances and coordinates are based on Louisiana Coordinate System of 1927 (South Zone).

NOTE: "Lessors acknowledge that said Township 5 North, Range 3 East, is located 72.50% in the Parish of Rapides and 27.50% in the Parish of LaSalle; and Lessee is authorized and directed to pay any and all rentals and royalties which may accrue under the terms of this lease to Lessors separately and in the following proportions: Rapides Parish School Board - 72.50% and LaSalle Parish School Board - 27.50%" and "prospective bidders are hereby placed on notice that execution by the State Mineral Board of oil, gas and mineral lease on behalf of the Rapides Parish School Board and the LaSalle Parish School Board on the above described portion of section shall not be construed as a waiver by the State Mineral Board of any rights that it may have to lease for and on behalf of the State of Louisiana any navigable water bottoms that might be included within said portion of said section."

NOTE: The above description of the tract nominated for lease has been provided exclusively by the party nominating the tract for lease. The Louisiana State Mineral Board makes no representation as to the accuracy of the description of the nominated tract or its suitability for lease. The Louisiana State Mineral Board has made no inspection of the nominated tract for the existence of conflicting leases, operating agreements, private claims or other existing or future obligations or conditions which may affect all or any portion of the nominated tract or its suitability for lease.

Maps depicting the nominated tract, containing the bearings, distances and coordinates of the nominated tract based on the Louisiana Coordinate System of 1927, North or South Zone, as applicable, are available for public inspection and review at the offices of the Louisiana State Mineral Board from 10:00 a.m. to 3:00 p.m. Monday - Friday.

In the event of conflict between the description of the nominated tract set forth above and the description of the nominated property as contained on the maps maintained at the offices of the Louisiana State Mineral Board, the Louisiana State Mineral Board maps shall prevail and shall provide the final property description of the lease to be awarded of the nominated tract.

Any mineral lease of the nominated tract by the Louisiana State Mineral Board shall be without warranty of any kind, either express, implied, or statutory, including, but not limited to, the implied warranties or merchantability and fitness for a particular purpose. Should the mineral lease of the nominated tract awarded by the Louisiana State Mineral Board be subsequently modified, cancelled or abrogated due to the existence of conflicting leases, operating agreements, private claims or other existing of future obligations or conditions which may affect all or any portion of the leased tract, it shall not relieve the Lessee of the obligation to pay any bonus due thereon to the Louisiana State Mineral Board, nor shall the Louisiana State Mineral Board be obligated to refund any consideration paid by the Lessee prior to such modification, cancellation, or abrogation, including, but not limited to, bonuses, rents and royalties.

Applicant: McGinty-Durham, Inc. to Agency and by Resolution from the LaSalle Parish School Board and the Rapides Parish School Board authorizing the Mineral Board to act in its behalf.

Bidder	Cash Payment	Price / Acre	Rental	Oil	Gas	Other

WILDLIFE MANAGEMENT AREA

433



TOWNSHIP 5 NORTH, RANGE 3 EAST

TR 34340
280.00 ± ACS.
MAR., 2002

WEST SALINE LAKE

OIL FIELD

LA SALINE PARISH
LA SALINE PARISH

NORTH
BIG ISLAND

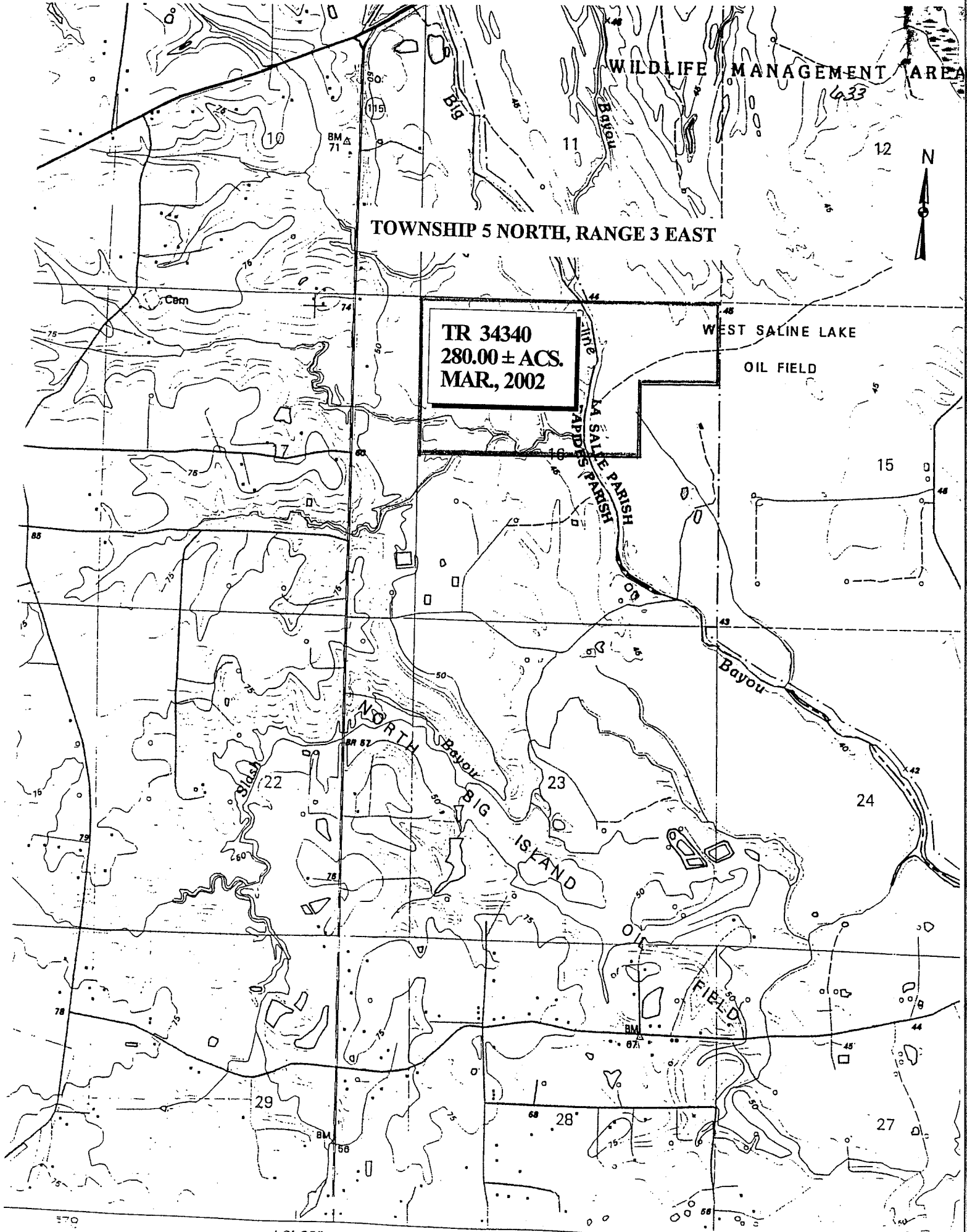
FIELD

10' 00"

580

581

582000mC



TRACT 34341 - STATE AGENCY - Jefferson Davis Parish, Louisiana

A certain tract of land belonging to and not under mineral lease from the Town of Lake Arthur, on March 13, 2002, being more fully described as follows: Beginning at a point having Coordinates of X = 1,576,015.00 and Y = 515,674.00; thence South 21 degrees 30 minutes 00 seconds East, approximately 361 feet to a point of intersection with the Northerly bankline of Lake Arthur; thence Southwesterly on the said bankline for an approximate distance of 3,101 feet to the Southeast comer of State Agency Lease No. 14568; thence North 20 degrees 00 minutes 00 seconds West approximately 1,132 feet along the East boundary of said State Agency Lease No. 14568 to its Northwest comer; thence Northwesterly on a straight line to a point having Coordinates of X = 1,573,838.12 and Y = 514,816.50; thence Northeasterly 2,339.68 feet to the point of beginning, excluding beds and bottoms of all navigable waters, containing approximately **19.34 acres**, as shown outlined on a plat on file in the Office of Mineral Resources, Department of Natural Resources, as provided by the applicant. All bearings, distances and coordinates are based on Louisiana Coordinate System of 1927 (South Zone).

NOTE: The above description of the tract nominated for lease has been provided exclusively by the party nominating the tract for lease. The Louisiana State Mineral Board makes no representation as to the accuracy of the description of the nominated tract or its suitability for lease. The Louisiana State Mineral Board has made no inspection of the nominated tract for the existence of conflicting leases, operating agreements, private claims or other existing or future obligations or conditions which may affect all or any portion of the nominated tract or its suitability for lease.

Maps depicting the nominated tract, containing the bearings, distances and coordinates of the nominated tract based on the Louisiana Coordinate System of 1927, North or South Zone, as applicable, are available for public inspection and review at the offices of the Louisiana State Mineral Board from 10:00 a.m. to 3:00 p.m. Monday - Friday.

In the event of conflict between the description of the nominated tract set forth above and the description of the nominated property as contained on the maps maintained at the offices of the Louisiana State Mineral Board, the Louisiana State Mineral Board maps shall prevail and shall provide the final property description of the lease to be awarded of the nominated tract.

Any mineral lease of the nominated tract by the Louisiana State Mineral Board shall be without warranty of any kind, either express, implied, or statutory, including, but not limited to, the implied warranties or merchantability and fitness for a particular purpose. Should the mineral lease of the nominated tract awarded by the Louisiana State Mineral Board be subsequently modified, cancelled or abrogated due to the existence of conflicting leases, operating agreements, private claims or other existing of future obligations or conditions which may affect all or any portion of the leased tract, it shall not relieve the Lessee of the obligation to pay any bonus due thereon to the Louisiana State Mineral Board, nor shall the Louisiana State Mineral Board be obligated to refund any consideration

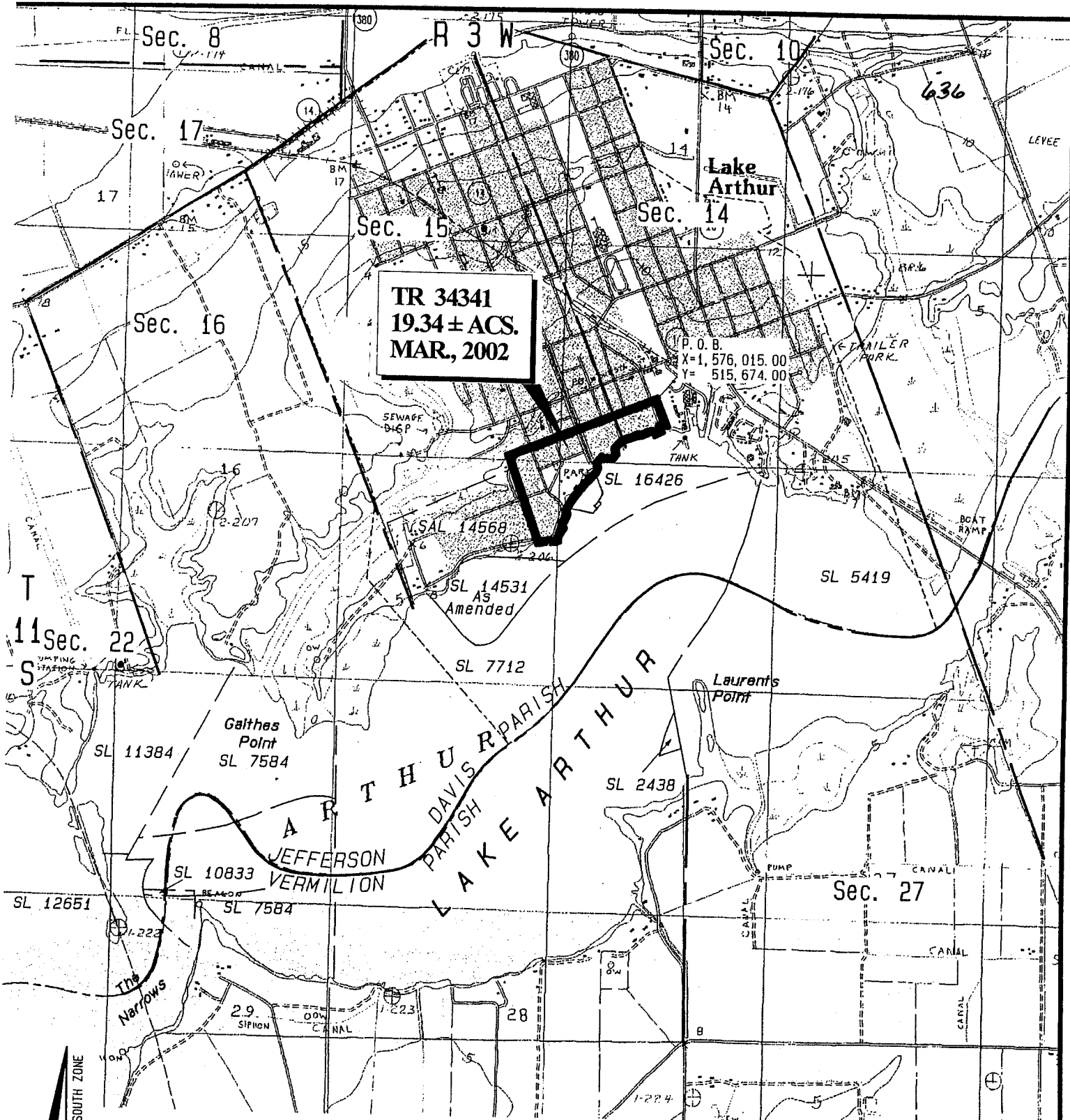
paid by the Lessee prior to such modification, cancellation, or abrogation, including, but not limited to, bonuses, rents and royalties.

NOTE: The State of Louisiana does hereby reserve, and this lease shall be subject to, the imprescriptible right of surface use in the nature of a servitude in favor of the Department of Natural Resources, including its Offices and Commissions, for the sole purpose of implementing, constructing, servicing and maintaining approved coastal zone management and/or restoration projects. Utilization of any and all rights derived under this lease by the mineral lessee, its agents, successors or assigns, shall not interfere with nor hinder the reasonable surface use by the Department of Natural Resources, its Offices or Commissions, as hereinabove reserved.

Applicant: Roblyn Petroleum Corporation to Agency and by Resolution from the Town of Lake Arthur authorizing the Mineral Board to act in its behalf.

Bidder	Cash Payment	Price / Acre	Rental	Oil	Gas	Other

TR 34341
19.34 ± ACS.
MAR, 2002



Jefferson Davis Parish, Louisiana

