

**TRACT 34155 - PORTION OF BLOCK 5, MAIN PASS AREA, REVISED, St. Bernard Parish, Louisiana**

That portion of Block 5, Main Pass Area, Revised, St. Bernard Parish, Louisiana, belonging to the State of Louisiana and not under mineral lease on March 13, 2002, described as follows: Beginning at a point on the East line of Block 5, Main Pass Area, having Coordinates of X = 2,768,100.00 and Y = 373,955.00; thence West 5,115.66 feet to a point having Coordinates of X = 2,762,984.34 and Y = 373,955.00; thence Northeasterly on a straight line to a point having Coordinates of X = 2,766,408 and Y = 378,524; thence Northeasterly on a straight line to a point having Coordinates of X = 2,767,052 and Y = 379,676; thence Northeasterly on a straight line to a point having Coordinates of X = 2,768,031 and Y = 380,244; thence Northeasterly on a straight line to a point on the East line of Block 5 having Coordinates of X = 2,768,100.00 and Y = 380,362.43; thence South 6,407.43 feet on the East line of said Block 5 to the point of beginning, containing approximately **379 acres**, as shown outlined on a plat on file in the Office of Mineral Resources, Department of Natural Resources, as provided by the applicant. All bearings, distances and coordinates are based on Louisiana Coordinate System of 1927 (South Zone).

NOTE: The above description of the tract nominated for lease has been provided exclusively by the party nominating the tract for lease. The Louisiana State Mineral Board makes no representation as to the accuracy of the description of the nominated tract or its suitability for lease. The Louisiana State Mineral Board has made no inspection of the nominated tract for the existence of conflicting leases, operating agreements, private claims or other existing or future obligations or conditions which may affect all or any portion of the nominated tract or its suitability for lease.

Maps depicting the nominated tract, containing the bearings, distances and coordinates of the nominated tract based on the Louisiana Coordinate System of 1927, North or South Zone, as applicable, are available for public inspection and review at the offices of the Louisiana State Mineral Board from 10:00 a.m. to 3:00 p.m. Monday - Friday.

In the event of conflict between the description of the nominated tract set forth above and the description of the nominated property as contained on the maps maintained at the offices of the Louisiana State Mineral Board, the Louisiana State Mineral Board maps shall prevail and shall provide the final property description of the lease to be awarded of the nominated tract.

Any mineral lease of the nominated tract by the Louisiana State Mineral Board shall be without warranty of any kind, either express, implied, or statutory, including, but not limited to, the implied warranties or merchantability and fitness for a particular purpose. Should the mineral lease of the nominated tract awarded by the Louisiana State Mineral Board be subsequently modified, cancelled or abrogated due to the existence of conflicting leases, operating agreements, private claims or other existing of future obligations or conditions which may affect all or any portion of the leased tract, it shall not relieve the Lessee of the obligation to pay any bonus due thereon to the Louisiana State Mineral Board, nor shall the

Louisiana State Mineral Board be obligated to refund any consideration paid by the Lessee prior to such modification, cancellation, or abrogation, including, but not limited to, bonuses, rents and royalties.

NOTE: The Office of Mineral Resources will require a minimum bonus of \$230 per acre and a minimum royalty of 23%.

NOTE: The State of Louisiana does hereby reserve, and this lease shall be subject to, the imprescriptible right of surface use in the nature of a servitude in favor of the Department of Natural Resources, including its Offices and Commissions, for the sole purpose of implementing, constructing, servicing and maintaining approved coastal zone management and/or restoration projects. Utilization of any and all rights derived under this lease by the mineral lessee, its agents, successors or assigns, shall not interfere with nor hinder the reasonable surface use by the Department of Natural Resources, its Offices or Commissions, as hereinabove reserved.

Applicant: Crossroads Energy

Bidder	Cash Payment	Price / Acre	Rental	Oil	Gas	Other

CHANDELEUR SOUND AREA

BIK. 61

74

SHALLOW

MAIN PASS AREA REVISED

BIK. 5

TR 34155  
379 ± ACS.  
MAR., 2002

P. O. B.  
X=2,768,100.00  
Y= 373,955.00

BLOCK 5

GULF OF MEXICO

MAIN PASS AREA, REVISED

Topography obtained from USCGGS Quadrangle  
"STAKE ISLAND, LA." 1951 Edition.

St. Bernard Parish, Louisiana

2000' 0' 2000'

NAD 27 LAMBERT LA. SOUTH ZONE

AREA  
AND  
RESTON  
STAKE  
ISLAND

**TRACT 34156 - PORTION OF BLOCK 7, CHANDELEUR AREA, St. Bernard Parish, Louisiana**

That portion of Block 7, Chandeleur Area, St. Bernard Parish, Louisiana, belonging to the State of Louisiana and not under mineral lease on March 13, 2002, described as follows: Beginning at a point being the Northwest corner of Block 7, Chandeleur Area, having Coordinates of X = 2,797,608.05 and Y = 455,120.25; thence East 14,758.05 feet to the Northeast corner Block 7 having Coordinates of X = 2,812,366.10 and Y = 455,120.25; thence South 7,379.02 feet to a point having Coordinates of X = 2,812,366.10 and Y = 447,741.23; thence West 14,758.05 feet to a point having Coordinates of X = 2,797,608.05 and Y = 447,741.23; thence North 7,379.02 feet to the point of beginning, containing approximately **2,500.00 acres**, as shown outlined on a plat on file in the Office of Mineral Resources, Department of Natural Resources, as provided by the applicant. All bearings, distances and coordinates are based on Louisiana Coordinate System of 1927 (South Zone).

NOTE: The above description of the tract nominated for lease has been provided exclusively by the party nominating the tract for lease. The Louisiana State Mineral Board makes no representation as to the accuracy of the description of the nominated tract or its suitability for lease. The Louisiana State Mineral Board has made no inspection of the nominated tract for the existence of conflicting leases, operating agreements, private claims or other existing or future obligations or conditions which may affect all or any portion of the nominated tract or its suitability for lease.

Maps depicting the nominated tract, containing the bearings, distances and coordinates of the nominated tract based on the Louisiana Coordinate System of 1927, North or South Zone, as applicable, are available for public inspection and review at the offices of the Louisiana State Mineral Board from 10:00 a.m. to 3:00 p.m. Monday - Friday.

In the event of conflict between the description of the nominated tract set forth above and the description of the nominated property as contained on the maps maintained at the offices of the Louisiana State Mineral Board, the Louisiana State Mineral Board maps shall prevail and shall provide the final property description of the lease to be awarded of the nominated tract.

Any mineral lease of the nominated tract by the Louisiana State Mineral Board shall be without warranty of any kind, either express, implied, or statutory, including, but not limited to, the implied warranties or merchantability and fitness for a particular purpose. Should the mineral lease of the nominated tract awarded by the Louisiana State Mineral Board be subsequently modified, cancelled or abrogated due to the existence of conflicting leases, operating agreements, private claims or other existing of future obligations or conditions which may affect all or any portion of the leased tract, it shall not relieve the Lessee of the obligation to pay any bonus due thereon to the Louisiana State Mineral Board, nor shall the Louisiana State Mineral Board be obligated to refund any consideration paid by the Lessee prior to such modification, cancellation, or abrogation, including, but not limited to, bonuses, rents and royalties.

NOTE: The Office of Mineral Resources will require a minimum bonus of \$130 per acre and a minimum royalty of 21%.

NOTE: The State of Louisiana does hereby reserve, and this lease shall be subject to, the imprescriptible right of surface use in the nature of a servitude in favor of the Department of Natural Resources, including its Offices and Commissions, for the sole purpose of implementing, constructing, servicing and maintaining approved coastal zone management and/or restoration projects. Utilization of any and all rights derived under this lease by the mineral lessee, its agents, successors or assigns, shall not interfere with nor hinder the reasonable surface use by the Department of Natural Resources, its Offices or Commissions, as hereinabove reserved.

Applicant: Crossroads Energy

Bidder	Cash Payment	Price / Acre	Rental	Oil	Gas	Other

77



P.O.B.  
X=2,797,608.05  
Y= 455,120.25

60

TR 34156  
2,500.00 ± ACS.  
MAR., 2002

7

LA  
USA

61

15

CHANDELEUR AREA  
ST. BERNARD PARISH, LOUISIANA

SCALE: 1" = 4000'

**TRACT 34157 - PORTION OF BLOCK 7, CHANDELEUR AREA, St. Bernard Parish, Louisiana**

That portion of Block 7, Chandeleur Area, St. Bernard Parish, Louisiana, belonging to the State of Louisiana and not under mineral lease on March 13, 2002, described as follows: Beginning at a point being the Southwest corner of Block 7, Chandeleur Area, having Coordinates of X = 2,797,608.05 and Y = 440,362.20; thence North 7,379.03 feet to a point having Coordinates of X = 2,797,608.05 and Y = 447,741.23; thence East 14,758.05 feet to a point having Coordinates of X = 2,812,366.10 and Y = 447,741.23; thence South 7,379.03 feet to a point having Coordinates of X = 2,812,366.10 and Y = 440,362.20; thence West 14,758.05 feet to the point of beginning, containing approximately 2,500.00 acres, as shown outlined on a plat on file in the Office of Mineral Resources, Department of Natural Resources, as provided by the applicant. All bearings, distances and coordinates are based on Louisiana Coordinate System of 1927 (South Zone).

NOTE: The above description of the tract nominated for lease has been provided exclusively by the party nominating the tract for lease. The Louisiana State Mineral Board makes no representation as to the accuracy of the description of the nominated tract or its suitability for lease. The Louisiana State Mineral Board has made no inspection of the nominated tract for the existence of conflicting leases, operating agreements, private claims or other existing or future obligations or conditions which may affect all or any portion of the nominated tract or its suitability for lease.

Maps depicting the nominated tract, containing the bearings, distances and coordinates of the nominated tract based on the Louisiana Coordinate System of 1927, North or South Zone, as applicable, are available for public inspection and review at the offices of the Louisiana State Mineral Board from 10:00 a.m. to 3:00 p.m. Monday - Friday.

In the event of conflict between the description of the nominated tract set forth above and the description of the nominated property as contained on the maps maintained at the offices of the Louisiana State Mineral Board, the Louisiana State Mineral Board maps shall prevail and shall provide the final property description of the lease to be awarded of the nominated tract.

Any mineral lease of the nominated tract by the Louisiana State Mineral Board shall be without warranty of any kind, either express, implied, or statutory, including, but not limited to, the implied warranties or merchantability and fitness for a particular purpose. Should the mineral lease of the nominated tract awarded by the Louisiana State Mineral Board be subsequently modified, cancelled or abrogated due to the existence of conflicting leases, operating agreements, private claims or other existing or future obligations or conditions which may affect all or any portion of the leased tract, it shall not relieve the Lessee of the obligation to pay any bonus due thereon to the Louisiana State Mineral Board, nor shall the Louisiana State Mineral Board be obligated to refund any consideration paid by the Lessee prior to such modification, cancellation, or abrogation, including, but not limited to, bonuses, rents and royalties.

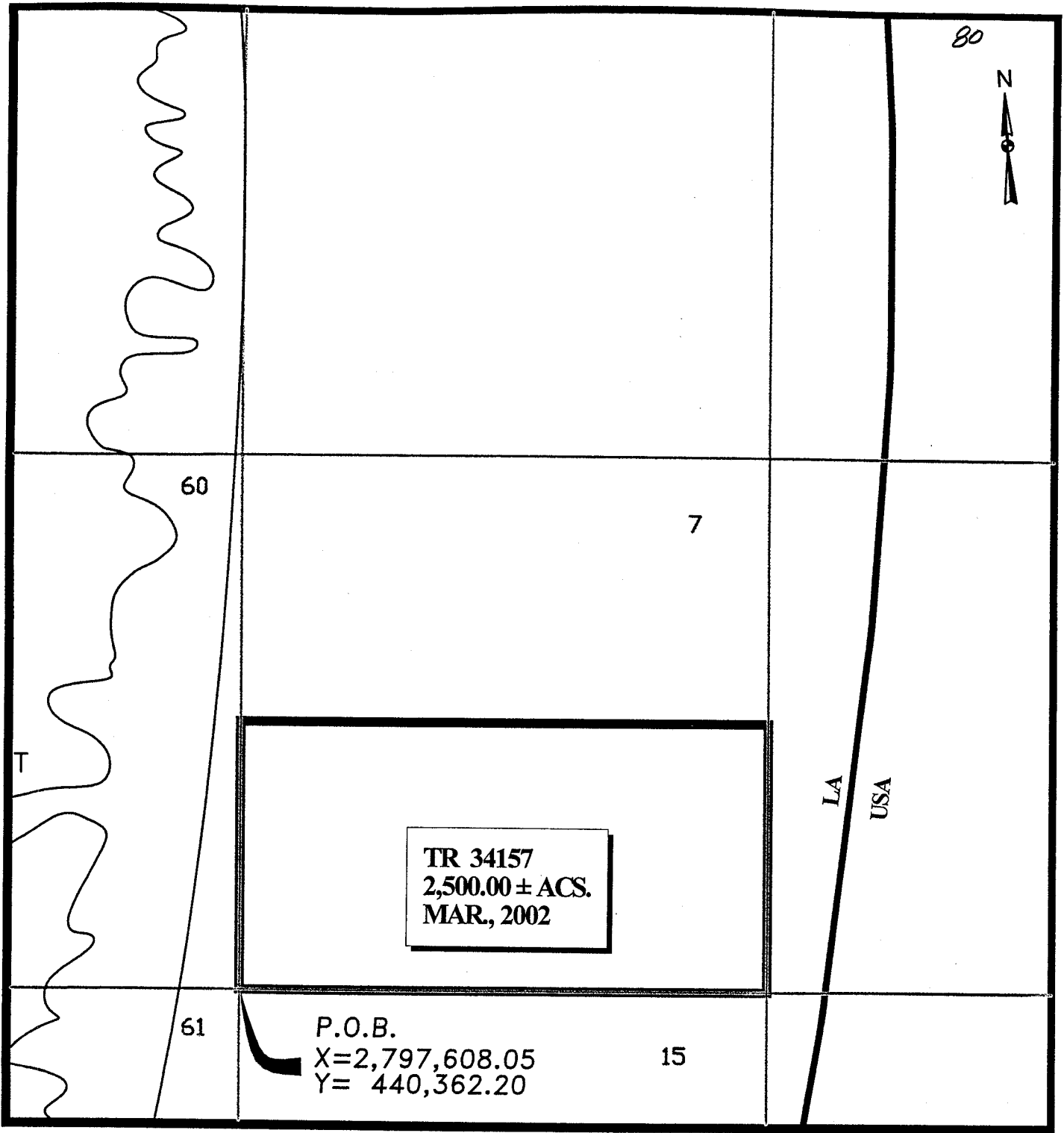
NOTE: The Office of Mineral Resources will require a minimum bonus of \$130 per acre and a minimum royalty of 21%.

NOTE: The State of Louisiana does hereby reserve, and this lease shall be subject to, the imprescriptible right of surface use in the nature of a servitude in favor of the Department of Natural Resources, including its Offices and Commissions, for the sole purpose of implementing, constructing, servicing and maintaining approved coastal zone management and/or restoration projects. Utilization of any and all rights derived under this lease by the mineral lessee, its agents, successors or assigns, shall not interfere with nor hinder the reasonable surface use by the Department of Natural Resources, its Offices or Commissions, as hereinabove reserved.

Applicant: Crossroads Energy

Bidder	Cash Payment	Price / Acre	Rental	Oil	Gas	Other





CHANDELEUR AREA  
ST. BERNARD PARISH, LOUISIANA

SCALE: 1" = 4000'

**TRACT 34158 - PORTION OF BLOCK 15, CHANDELEUR AREA, St. Bernard Parish, Louisiana**

That portion of Block 15, Chandeleur Area, St. Bernard Parish, Louisiana, belonging to the State of Louisiana and not under mineral lease on March 13, 2002, described as follows: Beginning at a point being the Northwest corner of Block 15, Chandeleur Area, having Coordinates of X = 2,797,608.05 and Y = 440,362.20; thence East 14,758.05 feet to the Northeast corner of Block 15 having Coordinates of X = 2,812,366.10 and Y = 440,362.20; thence South 7,379.03 feet to a point having Coordinates of X = 2,812,366.10 and Y = 432,983.17; thence West 14,758.05 feet to a point having Coordinates of X = 2,797,608.05 and Y = 432,983.17; thence North 7,379.03 feet to the point of beginning, containing approximately **2,500.00 acres**, as shown outlined on a plat on file in the Office of Mineral Resources, Department of Natural Resources, as provided by the applicant. All bearings, distances and coordinates are based on Louisiana Coordinate System of 1927 (South Zone).

NOTE: The above description of the tract nominated for lease has been provided exclusively by the party nominating the tract for lease. The Louisiana State Mineral Board makes no representation as to the accuracy of the description of the nominated tract or its suitability for lease. The Louisiana State Mineral Board has made no inspection of the nominated tract for the existence of conflicting leases, operating agreements, private claims or other existing or future obligations or conditions which may affect all or any portion of the nominated tract or its suitability for lease.

Maps depicting the nominated tract, containing the bearings, distances and coordinates of the nominated tract based on the Louisiana Coordinate System of 1927, North or South Zone, as applicable, are available for public inspection and review at the offices of the Louisiana State Mineral Board from 10:00 a.m. to 3:00 p.m. Monday - Friday.

In the event of conflict between the description of the nominated tract set forth above and the description of the nominated property as contained on the maps maintained at the offices of the Louisiana State Mineral Board, the Louisiana State Mineral Board maps shall prevail and shall provide the final property description of the lease to be awarded of the nominated tract.

Any mineral lease of the nominated tract by the Louisiana State Mineral Board shall be without warranty of any kind, either express, implied, or statutory, including, but not limited to, the implied warranties or merchantability and fitness for a particular purpose. Should the mineral lease of the nominated tract awarded by the Louisiana State Mineral Board be subsequently modified, cancelled or abrogated due to the existence of conflicting leases, operating agreements, private claims or other existing of future obligations or conditions which may affect all or any portion of the leased tract, it shall not relieve the Lessee of the obligation to pay any bonus due thereon to the Louisiana State Mineral Board, nor shall the Louisiana State Mineral Board be obligated to refund any consideration paid by the Lessee prior to such modification, cancellation, or abrogation, including, but not limited to, bonuses, rents and royalties.