

62

SL 12967

SL 16991

SL 13261

SL 12966

BIK. 42

SL 17199

TR 34151
432.75 ± ACS.
MAR., 2002

BIK. 41

SL 17197

SL 16869

SL 12729

P. O. B.
X=2,622,038.15
Y= 87,227.62

SL 17196

SL 12766

SOUTH PASS AREA

BIK. 58

BIK. 57

L.A.
U.S.A.

SL 16500

SL 16501

Plaquemines Parish, Louisiana

2000' 0' 2000'

NAD 27
LAMBERT L.A. SOUTH ZONE

TRACT 34152 - PORTION OF BLOCK 42, SOUTH PASS AREA, Plaquemines Parish, Louisiana

That portion of Block 42, South Pass Area, Plaquemines Parish, Louisiana, belonging to the State of Louisiana and not under mineral lease on March 13, 2002, described as follows: Beginning at the Southwest corner of State Lease No. 17197 having Coordinates of X = 2,622,038.15 and Y = 87,227.62; thence South 5,077.62 feet to a point on the South line of Block 42, South Pass Area, having Coordinates of X = 2,622,038.15 and Y = 82,150.00; thence West 6,110.15 feet along the South line of said Block 42 to its Southwest corner having Coordinates of X = 2,615,928.00 and Y = 82,150.00; thence North 4,954.61 feet along the West line of said Block 42 to the South corner of State Lease No. 12967 having Coordinates of X = 2,615,928.00 and Y = 87,104.61; thence North 29 degrees 44 minutes 42 seconds East 141.68 feet to a point on the East line of said State Lease No. 12967 having Coordinates of X = 2,615,998.29 and Y = 87,227.62; thence East 6,039.86 feet to the point of beginning, containing approximately **712.14 acres**, as shown outlined on a plat on file in the Office of Mineral Resources, Department of Natural Resources, as provided by the applicant. All bearings, distances and coordinates are based on Louisiana Coordinate System of 1927 (South Zone).

NOTE: The above description of the tract nominated for lease has been provided exclusively by the party nominating the tract for lease. The Louisiana State Mineral Board makes no representation as to the accuracy of the description of the nominated tract or its suitability for lease. The Louisiana State Mineral Board has made no inspection of the nominated tract for the existence of conflicting leases, operating agreements, private claims or other existing or future obligations or conditions which may affect all or any portion of the nominated tract or its suitability for lease.

Maps depicting the nominated tract, containing the bearings, distances and coordinates of the nominated tract based on the Louisiana Coordinate System of 1927, North or South Zone, as applicable, are available for public inspection and review at the offices of the Louisiana State Mineral Board from 10:00 a.m. to 3:00 p.m. Monday - Friday.

In the event of conflict between the description of the nominated tract set forth above and the description of the nominated property as contained on the maps maintained at the offices of the Louisiana State Mineral Board, the Louisiana State Mineral Board maps shall prevail and shall provide the final property description of the lease to be awarded of the nominated tract.

Any mineral lease of the nominated tract by the Louisiana State Mineral Board shall be without warranty of any kind, either express, implied, or statutory, including, but not limited to, the implied warranties or merchantability and fitness for a particular purpose. Should the mineral lease of the nominated tract awarded by the Louisiana State Mineral Board be subsequently modified, cancelled or abrogated due to the existence of conflicting leases, operating agreements, private claims or other existing of future obligations or conditions which may affect all or any portion of the leased tract, it shall not relieve the Lessee of the obligation to pay

any bonus due thereon to the Louisiana State Mineral Board, nor shall the Louisiana State Mineral Board be obligated to refund any consideration paid by the Lessee prior to such modification, cancellation, or abrogation, including, but not limited to, bonuses, rents and royalties.

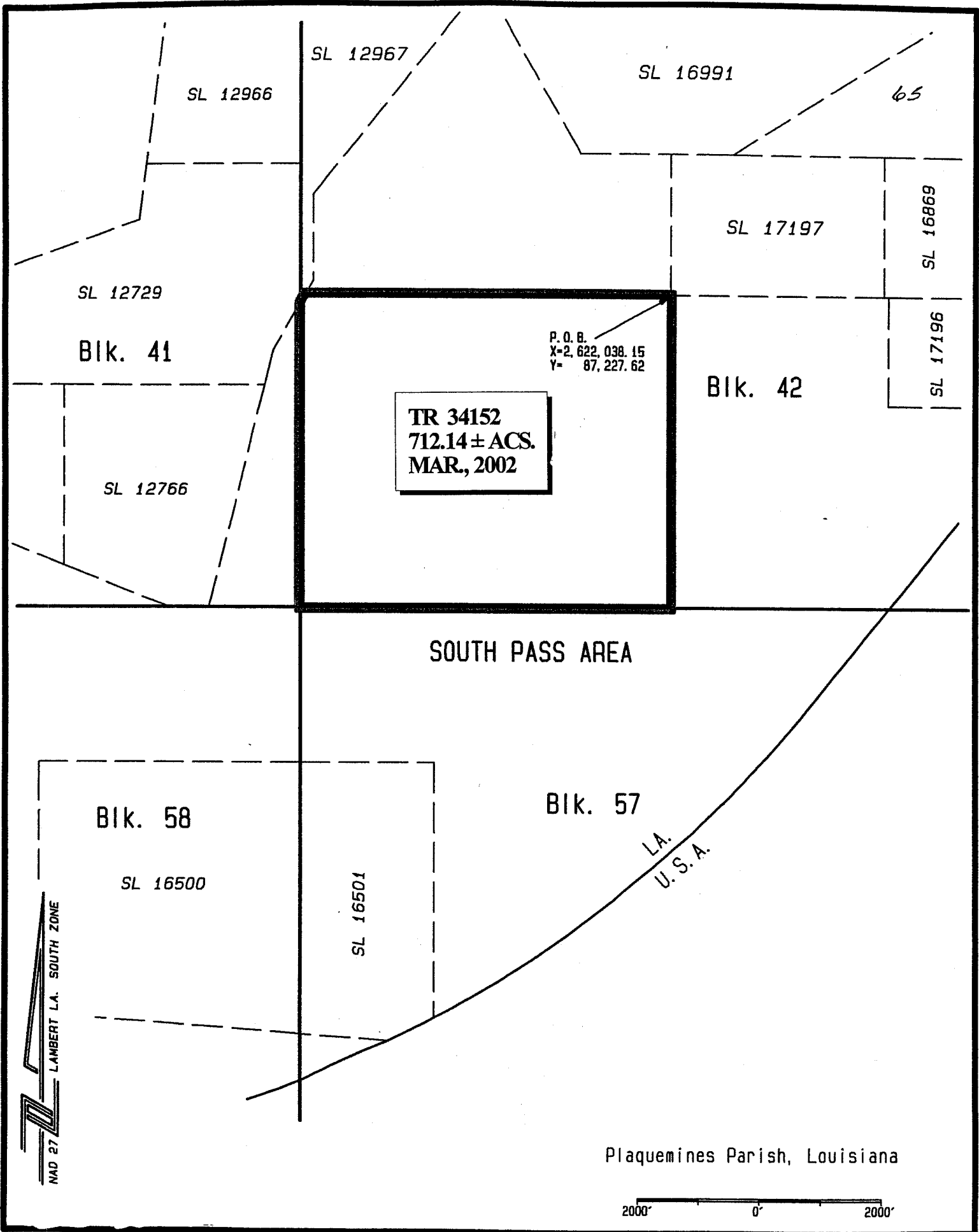
NOTE: It appears, according to our records, that a portion of this tract is located within the restrictive safety fairway area as set out by the Corps of Engineers, U.S. Army.

NOTE: It appears, according to our records, that a portion of this tract is located within the restrictive anchorage area as set out by the U. S. Coast Guard.

NOTE: The State of Louisiana does hereby reserve, and this lease shall be subject to, the imprescriptible right of surface use in the nature of a servitude in favor of the Department of Natural Resources, including its Offices and Commissions, for the sole purpose of implementing, constructing, servicing and maintaining approved coastal zone management and/or restoration projects. Utilization of any and all rights derived under this lease by the mineral lessee, its agents, successors or assigns, shall not interfere with nor hinder the reasonable surface use by the Department of Natural Resources, its Offices or Commissions, as hereinabove reserved.

Applicant: Harold J. Anderson, Inc.

Bidder	Cash Payment	Price / Acre	Rental	Oil	Gas	Other



SL 12967

SL 16991

65

SL 12966

SL 17197

SL 16869

SL 12729

BIK. 41

P. O. B.
X=2,622,038.15
Y= 87,227.62

BIK. 42

SL 17196

TR 34152
712.14 ± ACS.
MAR., 2002

SL 12766

SOUTH PASS AREA

BIK. 58

BIK. 57

SL 16500

SL 16501

L.A.
U. S. A.

Plaquemines Parish, Louisiana

2000' 0' 2000'

NAD 27 - LAMBERT LA. SOUTH ZONE

TRACT 34153 - PORTION OF BLOCK 57, SOUTH PASS AREA, Plaquemines Parish, Louisiana

That portion of Block 57, South Pass Area, Plaquemines Parish, Louisiana, belonging to the State of Louisiana and not under mineral lease on March 13, 2002, described as follows: Beginning at the Southwest corner of State Lease No. 16501, as amended having Coordinates of X = 2,615,928.00 and Y = 75,261.15; thence South 85 degrees 36 minutes 09 seconds East 1,452.89 feet along the South line of said State Lease No. 16501 to its Southeast corner having Coordinates of X = 2,617,376.61 and Y = 75,149.75; thence Southwesterly on an arc having a radius of 18,240.60 feet and a center at X = 2,609,180 and Y = 91,445 to a point on the West line of Block 57, South Pass Area, having Coordinates of X = 2,615,928.00 and Y = 74,498.50; thence North 762.65 feet along the West line of said Block 57 to the point of beginning, containing approximately 13.10 acres, as shown outlined on a plat on file in the Office of Mineral Resources, Department of Natural Resources, as provided by the applicant, **LESS AND EXCEPT** that portion thereof, if any, which is more than three nautical miles from the coast line as determined by the Report of the Special Master in the litigation in the Supreme Court of the United States styled United States v. State of Louisiana et al No. 9 Original, said three mile line as set out in the June, 1975, decree of the Supreme Court. All bearings, distances and coordinates are based on Louisiana Coordinate System of 1927 (South Zone).

NOTE: The above description of the tract nominated for lease has been provided exclusively by the party nominating the tract for lease. The Louisiana State Mineral Board makes no representation as to the accuracy of the description of the nominated tract or its suitability for lease. The Louisiana State Mineral Board has made no inspection of the nominated tract for the existence of conflicting leases, operating agreements, private claims or other existing or future obligations or conditions which may affect all or any portion of the nominated tract or its suitability for lease.

Maps depicting the nominated tract, containing the bearings, distances and coordinates of the nominated tract based on the Louisiana Coordinate System of 1927, North or South Zone, as applicable, are available for public inspection and review at the offices of the Louisiana State Mineral Board from 10:00 a.m. to 3:00 p.m. Monday - Friday.

In the event of conflict between the description of the nominated tract set forth above and the description of the nominated property as contained on the maps maintained at the offices of the Louisiana State Mineral Board, the Louisiana State Mineral Board maps shall prevail and shall provide the final property description of the lease to be awarded of the nominated tract.

Any mineral lease of the nominated tract by the Louisiana State Mineral Board shall be without warranty of any kind, either express, implied, or statutory, including, but not limited to, the implied warranties or merchantability and fitness for a particular purpose. Should the mineral lease of the nominated tract awarded by the Louisiana State Mineral Board be subsequently modified, cancelled or abrogated due to the existence of conflicting leases, operating agreements, private claims or other existing

of future obligations or conditions which may affect all or any portion of the leased tract, it shall not relieve the Lessee of the obligation to pay any bonus due thereon to the Louisiana State Mineral Board, nor shall the Louisiana State Mineral Board be obligated to refund any consideration paid by the Lessee prior to such modification, cancellation, or abrogation, including, but not limited to, bonuses, rents and royalties.

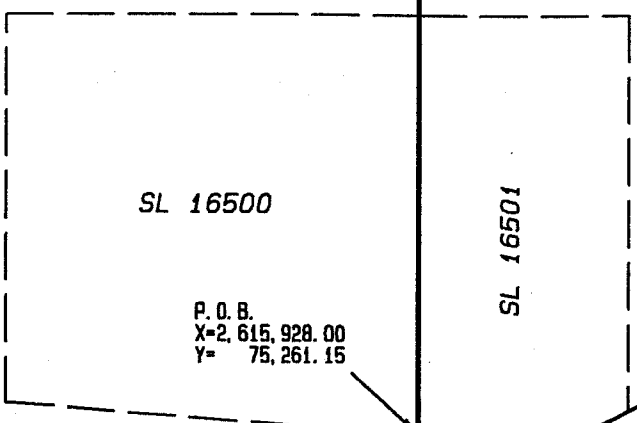
NOTE: It appears, according to our records, that a portion of this tract is located within the restrictive safety fairway area as set out by the Corps of Engineers, U.S. Army.

NOTE: The State of Louisiana does hereby reserve, and this lease shall be subject to, the imprescriptible right of surface use in the nature of a servitude in favor of the Department of Natural Resources, including its Offices and Commissions, for the sole purpose of implementing, constructing, servicing and maintaining approved coastal zone management and/or restoration projects. Utilization of any and all rights derived under this lease by the mineral lessee, its agents, successors or assigns, shall not interfere with nor hinder the reasonable surface use by the Department of Natural Resources, its Offices or Commissions, as hereinabove reserved.

Applicant: Harold J. Anderson, Inc.

Bidder	Cash Payment	Price / Acre	Rental	Oil	Gas	Other

68



SL 16500

P. O. B.
X=2,615,928.00
Y=75,261.15

SL 16501

L.A.
U. S. A.

TR 34153
13.10 ± ACS.
MAR., 2002

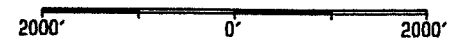
BIK. 58

BIK. 57

SOUTH PASS AREA

NAD 27
 LAMBERT L.A. SOUTH ZONE

Plaquemines Parish, Louisiana



TRACT 34154 - PORTION OF BLOCK 42, SOUTH PASS AREA, Plaquemines Parish, Louisiana

That portion of Block 42, South Pass Area, Plaquemines Parish, Louisiana, belonging to the State of Louisiana and not under mineral lease on March 13, 2002, described as follows: Beginning at the Southwest corner of State Lease No. 17197 having Coordinates of X = 2,622,038.15 and Y = 87,227.62; thence East 3,497.85 feet along the South line of said State Lease No. 17197 to its Southeast corner having Coordinates of X = 2,625,536.00 and Y = 87,227.62; thence North 1.38 feet along the East line of said State Lease No. 17197 to the Southwest corner of State Lease No. 16869 having Coordinates of X = 2,625,536.00 and Y = 87,229.00; thence East 73.64 feet along the South line of said State Lease No. 16869 to the Northwest corner of State Lease No. 17196 having Coordinates of X = 2,625,609.64 and Y = 87,229.00; thence South 1,779.23 feet along the West line of said State Lease No. 17196 to its Southwest corner having Coordinates of X = 2,625,609.64 and Y = 85,449.77; thence East 2,671.17 feet along the South line of said State Lease No. 17196 to its Southeast corner having Coordinates of X = 2,628,280.81 and Y = 85,449.77; thence Southwesterly on a straight line to a point having Coordinates of X = 2,626,027 and Y = 82,661; thence Southwesterly on a straight line to a point on the South line of Block 42, South Pass Area, having Coordinates of X = 2,625,613.54 and Y = 82,150.00; thence West 3,575.39 feet along the South line of said Block 42 to a point having Coordinates of X = 2,622,038.15 and Y = 82,150.00; thence North 5,077.62 feet to the point of beginning, containing approximately **517.65 acres**, as shown outlined on a plat on file in the Office of Mineral Resources, Department of Natural Resources, as provided by the applicant, **LESS AND EXCEPT** that portion thereof, if any, which is more than three nautical miles from the coast line as determined by the Report of the Special Master in the litigation in the Supreme Court of the United States styled United States v. State of Louisiana et al No. 9 Original, said three mile line as set out in the June, 1975, decree of the Supreme Court. All bearings, distances and coordinates are based on Louisiana Coordinate System of 1927 (South Zone).

NOTE: The above description of the tract nominated for lease has been provided exclusively by the party nominating the tract for lease. The Louisiana State Mineral Board makes no representation as to the accuracy of the description of the nominated tract or its suitability for lease. The Louisiana State Mineral Board has made no inspection of the nominated tract for the existence of conflicting leases, operating agreements, private claims or other existing or future obligations or conditions which may affect all or any portion of the nominated tract or its suitability for lease.

Maps depicting the nominated tract, containing the bearings, distances and coordinates of the nominated tract based on the Louisiana Coordinate System of 1927, North or South Zone, as applicable, are available for public inspection and review at the offices of the Louisiana State Mineral Board from 10:00 a.m. to 3:00 p.m. Monday - Friday.

In the event of conflict between the description of the nominated tract set forth above and the description of the nominated property as contained

on the maps maintained at the offices of the Louisiana State Mineral Board, the Louisiana State Mineral Board maps shall prevail and shall provide the final property description of the lease to be awarded of the nominated tract.

Any mineral lease of the nominated tract by the Louisiana State Mineral Board shall be without warranty of any kind, either express, implied, or statutory, including, but not limited to, the implied warranties or merchantability and fitness for a particular purpose. Should the mineral lease of the nominated tract awarded by the Louisiana State Mineral Board be subsequently modified, cancelled or abrogated due to the existence of conflicting leases, operating agreements, private claims or other existing of future obligations or conditions which may affect all or any portion of the leased tract, it shall not relieve the Lessee of the obligation to pay any bonus due thereon to the Louisiana State Mineral Board, nor shall the Louisiana State Mineral Board be obligated to refund any consideration paid by the Lessee prior to such modification, cancellation, or abrogation, including, but not limited to, bonuses, rents and royalties.

NOTE: It appears, according to our records, that a portion of this tract is located within the restrictive safety fairway area as set out by the Corps of Engineers, U.S. Army.

NOTE: It appears, according to our records, that a portion of this tract is located within the restrictive anchorage area as set out by the U. S. Coast Guard.

NOTE: The State of Louisiana does hereby reserve, and this lease shall be subject to, the imprescriptible right of surface use in the nature of a servitude in favor of the Department of Natural Resources, including its Offices and Commissions, for the sole purpose of implementing, constructing, servicing and maintaining approved coastal zone management and/or restoration projects. Utilization of any and all rights derived under this lease by the mineral lessee, its agents, successors or assigns, shall not interfere with nor hinder the reasonable surface use by the Department of Natural Resources, its Offices or Commissions, as hereinabove reserved.

Applicant: Harold J. Anderson, Inc.

Bidder	Cash Payment	Price / Acre	Rental	Oil	Gas	Other

SL 16991

71

SL 17199

SL 17197

SL 16869

BIK. 42

BIK. 43

P. O. B.
X=2,622,038.15
Y= 87,227.62

SL 17196

SOUTH PASS AREA

TR 34154
517.65 ± ACS.
MAR., 2002

SL
16501

BIK. 57

BIK. 56

L.A.
U. S. A.

NAD 27
LAMBERT L.A. SOUTH ZONE

Plaquemines Parish, Louisiana

2000' 0' 2000'