

Bidder	Cash Payment	Price / Acre	Rental	Oil	Gas	Other



4000 2000 0 2000 4000



1" = 4,000'

WEST DELTA/SOUTH PASS AREA
Plaquemines Parish, Louisiana

TR 34142
1,664.54 ± ACS.
MAR., 2002

POB X=2,605,477.93
Y=102,992.10

BLOCK 35

SL 2227

BLOCK 82

SL 2565

SL 2552

BLOCK

SL 2566

SL 17195

SL 17193

AO 232

SL 16991

SL 12967

SL 13261

SL 12966

BLOCK 42

BLOCK 84

BLOCK 41

SL 17197

SL 12729

SL 13262

SL 12766

S

TRACT 34143 - PORTION OF BLOCK 41, SOUTH PASS AREA, Plaquemines Parish, Louisiana

That portion of Block 41, South Pass Area, Plaquemines Parish, Louisiana, belonging to the State of Louisiana and not under mineral lease on March 13, 2002, described as follows: Beginning at the Southwest corner of Block 41 having Coordinates of X = 2,605,477.93 and Y = 82,150.00; thence North 7,200.00 feet along the West line of said Block 41 to a point having Coordinates of X = 2,605,477.93 and Y = 89,350.00; thence East to a point common to the Southwest corner of State Lease 12966, as amended, and the Northwest corner of State Lease 12729, as amended, having Coordinates of X = 2,613,392.74 and Y = 89,350.00; thence along the boundaries of said State Lease 12729, and State Leases 13262 and 12766, as amended, the following courses: South 07 degrees 18 minutes 59 seconds West 923.92 feet, South 70 degrees 22 minutes 01 seconds West 4,186.36 feet, South 44 degrees 22 minutes 20 seconds West 2,378.94 feet, South 46 degrees 21 minutes 25 seconds East 2,000.42 feet and South 68 degrees 55 minutes 55 seconds East 4,995.87 feet to a point of intersection with said State Lease 12766 and the South line of said Block 41 having Coordinates of X = 2,613,778.00 and Y = 82,150.00; thence West 8,300.07 feet to the point of beginning, estimated to contain **809.84 acres**, as shown outlined on a plat on file in the Office of Mineral Resources, Department of Natural Resources, as provided by the applicant. All bearings, distances and coordinates are based on Louisiana Coordinate System of 1927 (South Zone).

NOTE: The above description of the tract nominated for lease has been provided exclusively by the party nominating the tract for lease. The Louisiana State Mineral Board makes no representation as to the accuracy of the description of the nominated tract or its suitability for lease. The Louisiana State Mineral Board has made no inspection of the nominated tract for the existence of conflicting leases, operating agreements, private claims or other existing or future obligations or conditions which may affect all or any portion of the nominated tract or its suitability for lease.

Maps depicting the nominated tract, containing the bearings, distances and coordinates of the nominated tract based on the Louisiana Coordinate System of 1927, North or South Zone, as applicable, are available for public inspection and review at the offices of the Louisiana State Mineral Board from 10:00 a.m. to 3:00 p.m. Monday - Friday.

In the event of conflict between the description of the nominated tract set forth above and the description of the nominated property as contained on the maps maintained at the offices of the Louisiana State Mineral Board, the Louisiana State Mineral Board maps shall prevail and shall provide the final property description of the lease to be awarded of the nominated tract.

Any mineral lease of the nominated tract by the Louisiana State Mineral Board shall be without warranty of any kind, either express, implied, or statutory, including, but not limited to, the implied warranties or merchantability and fitness for a particular purpose. Should the mineral lease of the nominated tract awarded by the Louisiana State Mineral Board be subsequently modified, cancelled or abrogated due to the existence of

conflicting leases, operating agreements, private claims or other existing of future obligations or conditions which may affect all or any portion of the leased tract, it shall not relieve the Lessee of the obligation to pay any bonus due thereon to the Louisiana State Mineral Board, nor shall the Louisiana State Mineral Board be obligated to refund any consideration paid by the Lessee prior to such modification, cancellation, or abrogation, including, but not limited to, bonuses, rents and royalties.

NOTE: It appears, according to our records, that a portion of this tract is located within the restrictive safety fairway area as set out by the Corps of Engineers, U.S. Army.

NOTE: The State of Louisiana does hereby reserve, and this lease shall be subject to, the imprescriptible right of surface use in the nature of a servitude in favor of the Department of Natural Resources, including its Offices and Commissions, for the sole purpose of implementing, constructing, servicing and maintaining approved coastal zone management and/or restoration projects. Utilization of any and all rights derived under this lease by the mineral lessee, its agents, successors or assigns, shall not interfere with nor hinder the reasonable surface use by the Department of Natural Resources, its Offices or Commissions, as hereinabove reserved.

Applicant: Leslie L. Moore

Bidder	Cash Payment	Price / Acre	Rental	Oil	Gas	Other

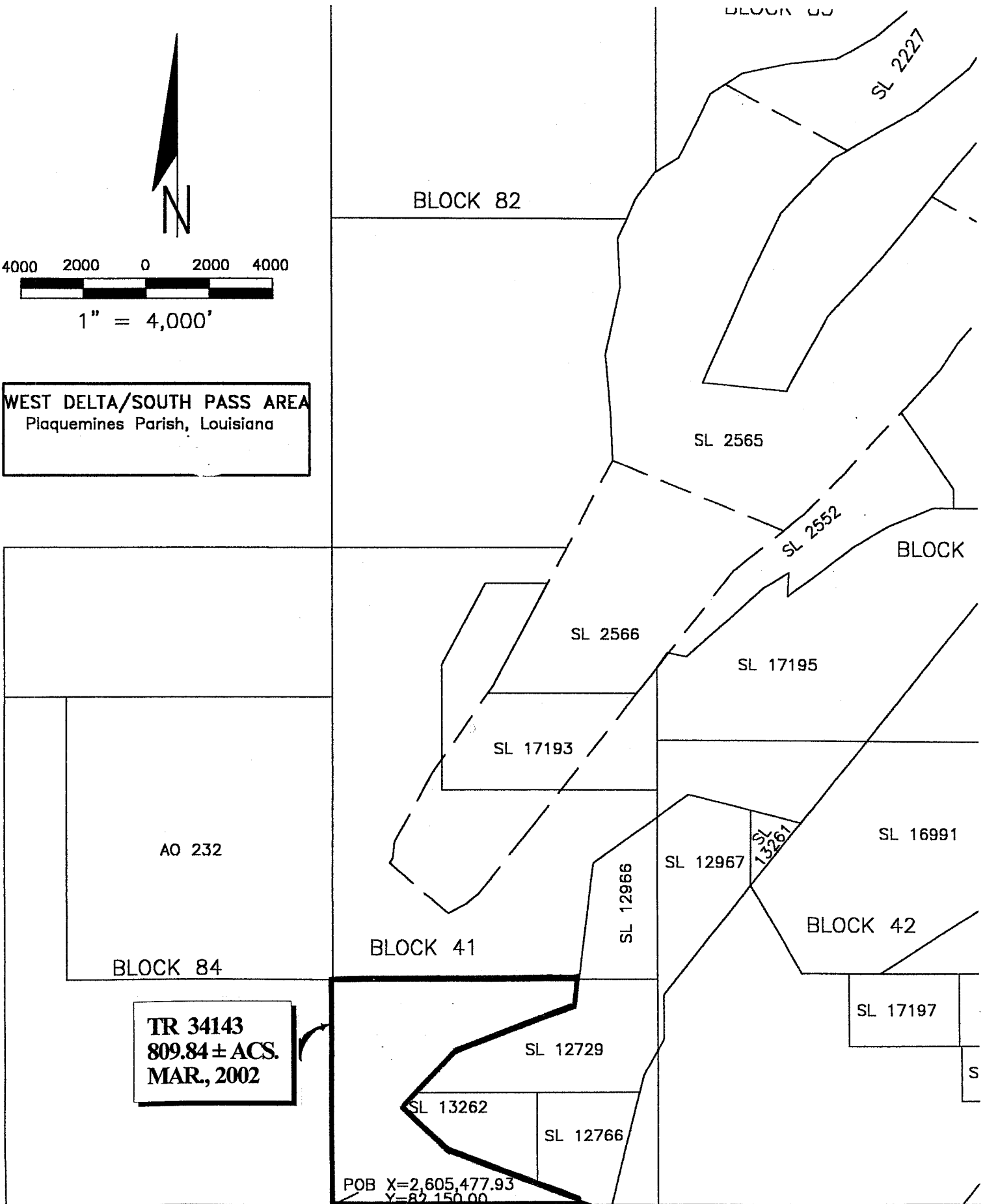


4000 2000 0 2000 4000



1" = 4,000'

WEST DELTA/SOUTH PASS AREA
Plaquemines Parish, Louisiana



TRACT 34144 - PORTION OF BLOCK 58, SOUTH PASS AREA, Plaquemines Parish, Louisiana

That portion of Block 58, South Pass Area, Plaquemines Parish, Louisiana, belonging to the State of Louisiana and not under mineral lease on March 13, 2002, described as follows: Beginning at the Northwest corner of Block 58, South Pass Area, having Coordinates of X = 2,605,477.93 and Y = 82,150.00; thence East 6,126.07 feet along the North line of said Block 58 to a point having Coordinates of X = 2,611,604.00 and Y = 82,150.00; thence South 2,526.08 feet to the Northwest corner of State Lease No. 16500 having Coordinates of X = 2,611,604.00 and Y = 79,623.92; thence West 6,126.07 feet to a point on the West line of said Block 58 having Coordinates of X = 2,605,477.93 and Y = 79,623.92; thence North 2,526.08 feet along the West line of said Block 58 to the point of beginning, containing approximately **355.26 acres**, as shown outlined on a plat on file in the Office of Mineral Resources, Department of Natural Resources, as provided by the applicant. All bearings, distances and coordinates are based on Louisiana Coordinate System of 1927 (South Zone).

NOTE: The above description of the tract nominated for lease has been provided exclusively by the party nominating the tract for lease. The Louisiana State Mineral Board makes no representation as to the accuracy of the description of the nominated tract or its suitability for lease. The Louisiana State Mineral Board has made no inspection of the nominated tract for the existence of conflicting leases, operating agreements, private claims or other existing or future obligations or conditions which may affect all or any portion of the nominated tract or its suitability for lease.

Maps depicting the nominated tract, containing the bearings, distances and coordinates of the nominated tract based on the Louisiana Coordinate System of 1927, North or South Zone, as applicable, are available for public inspection and review at the offices of the Louisiana State Mineral Board from 10:00 a.m. to 3:00 p.m. Monday - Friday.

In the event of conflict between the description of the nominated tract set forth above and the description of the nominated property as contained on the maps maintained at the offices of the Louisiana State Mineral Board, the Louisiana State Mineral Board maps shall prevail and shall provide the final property description of the lease to be awarded of the nominated tract.

Any mineral lease of the nominated tract by the Louisiana State Mineral Board shall be without warranty of any kind, either express, implied, or statutory, including, but not limited to, the implied warranties or merchantability and fitness for a particular purpose. Should the mineral lease of the nominated tract awarded by the Louisiana State Mineral Board be subsequently modified, cancelled or abrogated due to the existence of conflicting leases, operating agreements, private claims or other existing of future obligations or conditions which may affect all or any portion of the leased tract, it shall not relieve the Lessee of the obligation to pay any bonus due thereon to the Louisiana State Mineral Board, nor shall the Louisiana State Mineral Board be obligated to refund any consideration

paid by the Lessee prior to such modification, cancellation, or abrogation, including, but not limited to, bonuses, rents and royalties.

NOTE: It appears, according to our records, that a portion of this tract is located within the restrictive safety fairway area as set out by the Corps of Engineers, U.S. Army.

NOTE: The State of Louisiana does hereby reserve, and this lease shall be subject to, the imprescriptible right of surface use in the nature of a servitude in favor of the Department of Natural Resources, including its Offices and Commissions, for the sole purpose of implementing, constructing, servicing and maintaining approved coastal zone management and/or restoration projects. Utilization of any and all rights derived under this lease by the mineral lessee, its agents, successors or assigns, shall not interfere with nor hinder the reasonable surface use by the Department of Natural Resources, its Offices or Commissions, as hereinabove reserved.

Applicant: Harold J. Anderson, Inc.

Bidder	Cash Payment	Price / Acre	Rental	Oil	Gas	Other

BIK. 84

SL 12729

41

BIK. 41

SL 13262

SL 12766

P. O. B.
X=2,605,477.93
Y= 82,150.00

TR 34144
355.26 ± ACS.
MAR., 2002

BIK. 109

WEST DELTA AREA
SOUTH PASS AREA

SL 16500

SL 16501

BIK. 58

LA.
U. S. A.

NAD 27 LAMBERT LA. SOUTH ZONE

Topography obtained from USC&GS Quadrangle
"STAKE ISLAND, LA." 1951 Edition.

Plaquemines Parish, Louisiana

2000' 0' 2000'

TRACT 34145 - PORTION OF BLOCK 58, SOUTH PASS AREA, Plaquemines Parish, Louisiana

That portion of Block 58, South Pass Area, Plaquemines Parish, Louisiana, belonging to the State of Louisiana and not under mineral lease on March 13, 2002, described as follows: Beginning at the Southwest corner of State Lease No. 16500 having Coordinates of X = 2,611,604.00 and Y = 75,593.68; thence West 6,126.07 feet to a point on the West line of Block 58, South Pass Area, having Coordinates of X = 2,605,477.93 and Y = 75,593.68; thence North 4,030.24 feet along the West line of said Block 58 to a point having Coordinates of X = 2,605,477.93 and Y = 79,623.92; thence East 6,126.07 feet to the Northwest corner of said State Lease No. 16500 having Coordinates of X = 2,611,604.00 and Y = 79,623.92; thence South 4,030.24 feet along the West line of said State Lease No. 16500 to the point of beginning, containing approximately **566.79 acres**, as shown outlined on a plat on file in the Office of Mineral Resources, Department of Natural Resources, as provided by the applicant. All bearings, distances and coordinates are based on Louisiana Coordinate System of 1927 (South Zone).

NOTE: The above description of the tract nominated for lease has been provided exclusively by the party nominating the tract for lease. The Louisiana State Mineral Board makes no representation as to the accuracy of the description of the nominated tract or its suitability for lease. The Louisiana State Mineral Board has made no inspection of the nominated tract for the existence of conflicting leases, operating agreements, private claims or other existing or future obligations or conditions which may affect all or any portion of the nominated tract or its suitability for lease.

Maps depicting the nominated tract, containing the bearings, distances and coordinates of the nominated tract based on the Louisiana Coordinate System of 1927, North or South Zone, as applicable, are available for public inspection and review at the offices of the Louisiana State Mineral Board from 10:00 a.m. to 3:00 p.m. Monday - Friday.

In the event of conflict between the description of the nominated tract set forth above and the description of the nominated property as contained on the maps maintained at the offices of the Louisiana State Mineral Board, the Louisiana State Mineral Board maps shall prevail and shall provide the final property description of the lease to be awarded of the nominated tract.

Any mineral lease of the nominated tract by the Louisiana State Mineral Board shall be without warranty of any kind, either express, implied, or statutory, including, but not limited to, the implied warranties or merchantability and fitness for a particular purpose. Should the mineral lease of the nominated tract awarded by the Louisiana State Mineral Board be subsequently modified, cancelled or abrogated due to the existence of conflicting leases, operating agreements, private claims or other existing of future obligations or conditions which may affect all or any portion of the leased tract, it shall not relieve the Lessee of the obligation to pay any bonus due thereon to the Louisiana State Mineral Board, nor shall the Louisiana State Mineral Board be obligated to refund any consideration