

SL 2549

BLOCK 55

SL 979

BLOCK 54

SL 1071

**TR 34139**  
**1,661.14 ± ACS.**  
**MAR., 2002**

**P.O.B.**  
**X=2,615,927.93**  
**Y= 126,795.25**

AO 161

SL

NOM 4  
595.56 AC

BLOCK 83

BLOCK 82

SL 2565



4000 2000 0 2000 4000



1" = 4,000'

**WEST DELTA/SOUTH PASS AREA**  
Plaquemines Parish, Louisiana

**TRACT 34140 - PORTION OF BLOCK 82, WEST DELTA AREA, Plaquemines Parish, Louisiana**

That portion of Block 82, West Delta Area, Plaquemines Parish, Louisiana, belonging to the State of Louisiana and not under mineral lease on March 13, 2002, described as follows: Beginning at the Northwest corner of said Block 82 having Coordinates of X = 2,605,477.93 and Y = 123,834.20; thence East 10,450.00 feet along the North line of said Block 82 to its Northeast corner having Coordinates of X = 2,615,927.93 and Y = 123,834.20; thence South approximately 8,415.00 feet along the East line of said Block 82 to a point of intersection with the Western boundary of State Lease 2565; thence Southwesterly approximately 2,265.00 feet on the Western boundary of said State Lease 2565 to a point of intersection with a line having a Coordinate of Y = 113,413.15; thence West approximately 9,524.00 feet to a point on the West line of said Block 82 having Coordinates of X = 2,605,477.93 and Y = 113,413.15; thence North 10,421.05 feet along the west line of said Block 82 to the point of beginning, containing approximately **2,473.00 acres**, as shown outlined on a plat on file in the Office of Mineral Resources, Department of Natural Resources, as provided by the applicant. All bearings, distances and coordinates are based on Louisiana Coordinate System of 1927 (South Zone).

NOTE: The above description of the tract nominated for lease has been provided exclusively by the party nominating the tract for lease. The Louisiana State Mineral Board makes no representation as to the accuracy of the description of the nominated tract or its suitability for lease. The Louisiana State Mineral Board has made no inspection of the nominated tract for the existence of conflicting leases, operating agreements, private claims or other existing or future obligations or conditions which may affect all or any portion of the nominated tract or its suitability for lease.

Maps depicting the nominated tract, containing the bearings, distances and coordinates of the nominated tract based on the Louisiana Coordinate System of 1927, North or South Zone, as applicable, are available for public inspection and review at the offices of the Louisiana State Mineral Board from 10:00 a.m. to 3:00 p.m. Monday - Friday.

In the event of conflict between the description of the nominated tract set forth above and the description of the nominated property as contained on the maps maintained at the offices of the Louisiana State Mineral Board, the Louisiana State Mineral Board maps shall prevail and shall provide the final property description of the lease to be awarded of the nominated tract.

Any mineral lease of the nominated tract by the Louisiana State Mineral Board shall be without warranty of any kind, either express, implied, or statutory, including, but not limited to, the implied warranties or merchantability and fitness for a particular purpose. Should the mineral lease of the nominated tract awarded by the Louisiana State Mineral Board be subsequently modified, cancelled or abrogated due to the existence of conflicting leases, operating agreements, private claims or other existing of future obligations or conditions which may affect all or any portion of the leased tract, it shall not relieve the Lessee of the obligation to pay

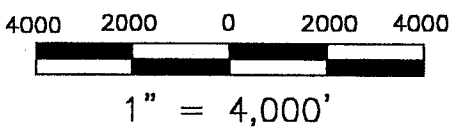
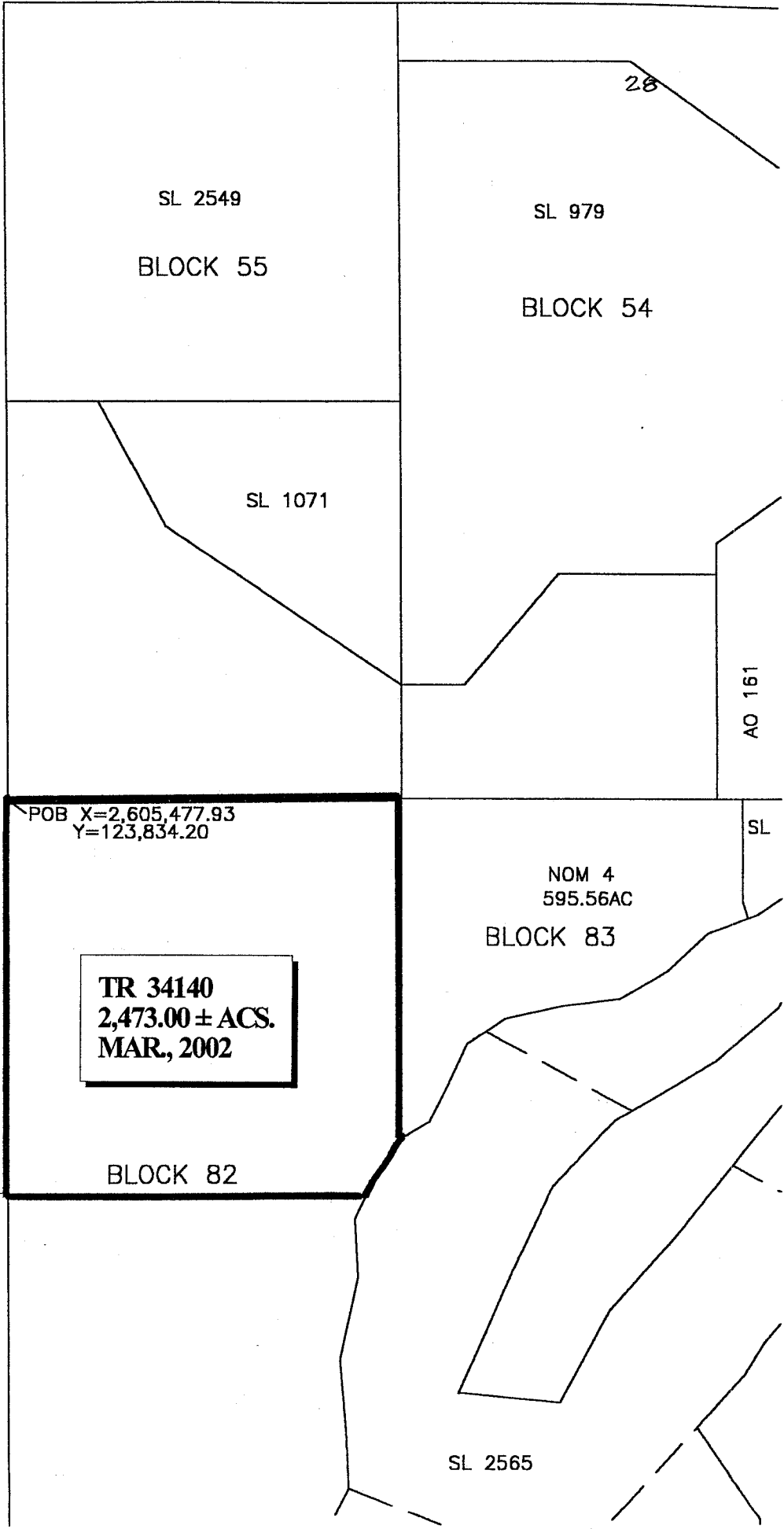
any bonus due thereon to the Louisiana State Mineral Board, nor shall the Louisiana State Mineral Board be obligated to refund any consideration paid by the Lessee prior to such modification, cancellation, or abrogation, including, but not limited to, bonuses, rents and royalties.

NOTE: The above tract is located in or near an oyster restricted area and all operations in such area must be conducted in strict conformity with the stipulations and/or regulations of the Louisiana Department of Wildlife and Fisheries.

NOTE: The State of Louisiana does hereby reserve, and this lease shall be subject to, the imprescriptible right of surface use in the nature of a servitude in favor of the Department of Natural Resources, including its Offices and Commissions, for the sole purpose of implementing, constructing, servicing and maintaining approved coastal zone management and/or restoration projects. Utilization of any and all rights derived under this lease by the mineral lessee, its agents, successors or assigns, shall not interfere with nor hinder the reasonable surface use by the Department of Natural Resources, its Offices or Commissions, as hereinabove reserved.

Applicant: Leslie L. Moore

Bidder	Cash Payment	Price / Acre	Rental	Oil	Gas	Other



WEST DELTA/SOUTH PASS AREA  
Plaquemines Parish, Louisiana

**TRACT 34141 - PORTION OF BLOCK 84, WEST DELTA AREA, Plaquemines Parish, Louisiana**

That portion of Block 84, West Delta Area, Plaquemines Parish, Louisiana, belonging to the State of Louisiana and not under mineral lease on March 13, 2002, described as follows: Beginning at the Northeast corner of said Block 84 having Coordinates of X = 2,605,477.93 and Y = 102,992.10; thence South 4,734.74 feet along the East line of said Block 84 to the Northeast corner of Operating Agreement 232 having Coordinates of X = 2,605,477.93 and Y = 98,257.36; thence West 8,450.00 feet along the North line of said Operating Agreement 232 to its Northwest corner having Coordinates of X = 2,597,027.93 and Y = 98,257.36; thence continue West to a point on the West line of said Block 84 having Coordinates of X = 2,595,027.93 and Y = 98,257.36; thence North 4,734.74 feet along the West line of said Block 84 to its Northwest corner having Coordinates of X = 2,595,027.93 and Y = 102,992.10; thence East 10,450.00 feet along the North line of said Block 84 to the point of beginning, containing approximately 1,135.86 acres, as shown outlined on a plat on file in the Office of Mineral Resources, Department of Natural Resources, as provided by the applicant. All bearings, distances and coordinates are based on Louisiana Coordinate System of 1927 (South Zone).

NOTE: The above description of the tract nominated for lease has been provided exclusively by the party nominating the tract for lease. The Louisiana State Mineral Board makes no representation as to the accuracy of the description of the nominated tract or its suitability for lease. The Louisiana State Mineral Board has made no inspection of the nominated tract for the existence of conflicting leases, operating agreements, private claims or other existing or future obligations or conditions which may affect all or any portion of the nominated tract or its suitability for lease.

Maps depicting the nominated tract, containing the bearings, distances and coordinates of the nominated tract based on the Louisiana Coordinate System of 1927, North or South Zone, as applicable, are available for public inspection and review at the offices of the Louisiana State Mineral Board from 10:00 a.m. to 3:00 p.m. Monday - Friday.

In the event of conflict between the description of the nominated tract set forth above and the description of the nominated property as contained on the maps maintained at the offices of the Louisiana State Mineral Board, the Louisiana State Mineral Board maps shall prevail and shall provide the final property description of the lease to be awarded of the nominated tract.

Any mineral lease of the nominated tract by the Louisiana State Mineral Board shall be without warranty of any kind, either express, implied, or statutory, including, but not limited to, the implied warranties or merchantability and fitness for a particular purpose. Should the mineral lease of the nominated tract awarded by the Louisiana State Mineral Board be subsequently modified, cancelled or abrogated due to the existence of conflicting leases, operating agreements, private claims or other existing of future obligations or conditions which may affect all or any portion of the leased tract, it shall not relieve the Lessee of the obligation to pay

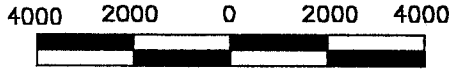
any bonus due thereon to the Louisiana State Mineral Board, nor shall the Louisiana State Mineral Board be obligated to refund any consideration paid by the Lessee prior to such modification, cancellation, or abrogation, including, but not limited to, bonuses, rents and royalties.

NOTE: The above tract is located in or near an oyster restricted area and all operations in such area must be conducted in strict conformity with the stipulations and/or regulations of the Louisiana Department of Wildlife and Fisheries.

NOTE: The State of Louisiana does hereby reserve, and this lease shall be subject to, the imprescriptible right of surface use in the nature of a servitude in favor of the Department of Natural Resources, including its Offices and Commissions, for the sole purpose of implementing, constructing, servicing and maintaining approved coastal zone management and/or restoration projects. Utilization of any and all rights derived under this lease by the mineral lessee, its agents, successors or assigns, shall not interfere with nor hinder the reasonable surface use by the Department of Natural Resources, its Offices or Commissions, as hereinabove reserved.

Applicant: Leslie L. Moore

Bidder	Cash Payment	Price / Acre	Rental	Oil	Gas	Other



1" = 4,000'

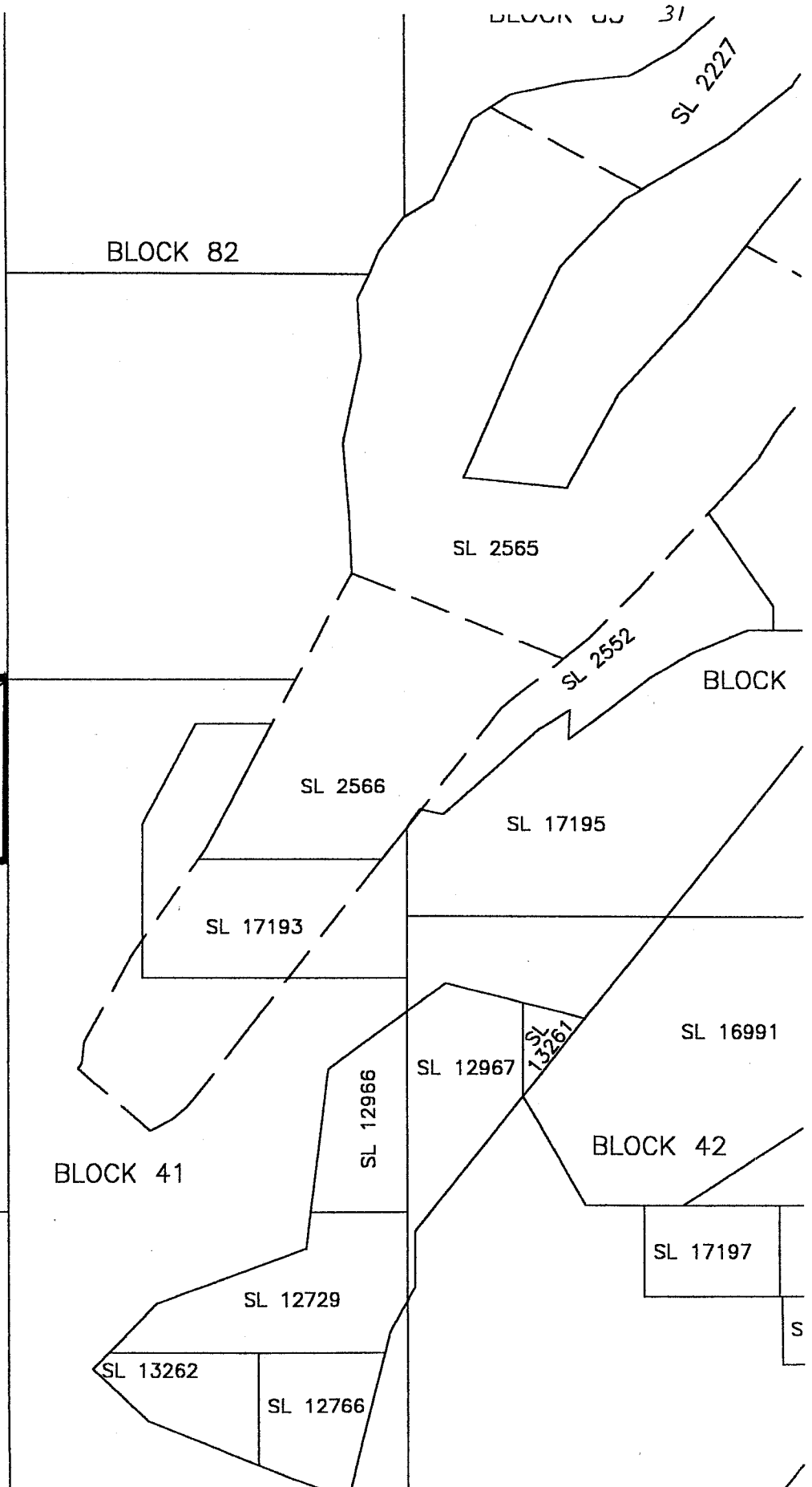
WEST DELTA/SOUTH PASS AREA  
Plaquemines Parish, Louisiana

POB X=2,605,477.93  
Y=102,992.10

**TR 34141**  
**1,135.86 ± ACS.**  
**MAR., 2002**

AO 232

BLOCK 84



**TRACT 34142 - PORTION OF BLOCK 41, SOUTH PASS AREA, Plaquemines Parish, Louisiana**

That portion of Block 41, South Pass Area, Plaquemines Parish, Louisiana, belonging to the State of Louisiana and not under mineral lease on March 13, 2002, described as follows: Beginning at the Northwest corner of Block 41 having Coordinates of X = 2,605,477.93 and Y = 102,992.10; thence East 7,541.00 feet along the North line of said Block 41 to a point of intersection with State Lease 2566, as amended; thence along the boundary of said State Lease 2566 South 28 degrees 33 minutes 37 seconds West 1,300.00 to a point of intersection the most North Northeast corner of State Lease 17193 having Coordinates of X = 2,612,397.42 and Y = 101,850.29; thence along the boundary of said State Lease 17193 the following courses: West 2,000.00 feet to a point having Coordinates of X = 2,610,397.42 and Y = 101,850.29, South 29 degrees 01 minutes 30 seconds West 2,925.63 and South 2,985.42 feet to a point of intersection with the shoreline having Coordinates of X = 2,608,977.93 and Y = 96,306.68; thence along the shoreline the following courses: Southwest on a straight line to a point having Coordinates of X = 2,608,665.00 and Y = 95,870.00, Southwest on a straight line to a point having Coordinates of X = 2,607,455.00 and Y = 93,710.00, Southwest on a straight line to a point having Coordinates of X = 2,607,400.00 and Y = 93,175.00, Southwest on a straight line to a point having Coordinates of X = 2,607,290.00 and Y = 93,040.00, Southeast on a straight line to a point having Coordinates of X = 2,609,180.00 and Y = 91,445.00, Northeast on a straight line to a point having Coordinates of X = 2,609,785.00 and Y = 91,750.00, thence Northeast on a straight line to a point having Coordinates of X = 2,610,160.00 and Y = 92,050.00, Northeast on a straight line to a point having Coordinates of X = 2,611,843.00 and Y = 94,130.00 and Northeast to a point of intersection with the South line of said State Lease 17193 having Coordinates of X = 2,612,822.55 and Y = 95,342.10; thence East to a point on the East line of said Block 41 having Coordinates of X = 2,615,928.00 and Y = 95,342.10; thence South along the East line of said Block 41 to the North corner of State Lease 12966, as amended, having Coordinates of X = 2,615,928.00 and Y = 94,488.82; thence along the boundary of said State Lease 12966 the following courses: South 54 degrees 24 minutes 20 seconds West 2,539.82 feet and South 07 degrees 18 minutes 59 seconds West 3,690.58 feet to its Southwest corner having Coordinates of X = 2,613,392.74 and Y = 89,350.00; thence West to a point on the West line of said Block 41 to a point having Coordinates of X = 2,605,477.93 and Y = 89,350.00; thence North 13,642.10 feet to the point of beginning, containing approximately **1,664.54 acres**, as shown outlined on a plat on file in the Office of Mineral Resources, Department of Natural Resources, as provided by the applicant. All bearings, distances and coordinates are based on Louisiana Coordinate System of 1927 (South Zone).

NOTE: The above description of the tract nominated for lease has been provided exclusively by the party nominating the tract for lease. The Louisiana State Mineral Board makes no representation as to the accuracy of the description of the nominated tract or its suitability for lease. The Louisiana State Mineral Board has made no inspection of the nominated



tract for the existence of conflicting leases, operating agreements, private claims or other existing or future obligations or conditions which may affect all or any portion of the nominated tract or its suitability for lease.

Maps depicting the nominated tract, containing the bearings, distances and coordinates of the nominated tract based on the Louisiana Coordinate System of 1927, North or South Zone, as applicable, are available for public inspection and review at the offices of the Louisiana State Mineral Board from 10:00 a.m. to 3:00 p.m. Monday - Friday.

In the event of conflict between the description of the nominated tract set forth above and the description of the nominated property as contained on the maps maintained at the offices of the Louisiana State Mineral Board, the Louisiana State Mineral Board maps shall prevail and shall provide the final property description of the lease to be awarded of the nominated tract.

Any mineral lease of the nominated tract by the Louisiana State Mineral Board shall be without warranty of any kind, either express, implied, or statutory, including, but not limited to, the implied warranties or merchantability and fitness for a particular purpose. Should the mineral lease of the nominated tract awarded by the Louisiana State Mineral Board be subsequently modified, cancelled or abrogated due to the existence of conflicting leases, operating agreements, private claims or other existing or future obligations or conditions which may affect all or any portion of the leased tract, it shall not relieve the Lessee of the obligation to pay any bonus due thereon to the Louisiana State Mineral Board, nor shall the Louisiana State Mineral Board be obligated to refund any consideration paid by the Lessee prior to such modification, cancellation, or abrogation, including, but not limited to, bonuses, rents and royalties.

NOTE: The above tract is located in or near an oyster restricted area and all operations in such area must be conducted in strict conformity with the stipulations and/or regulations of the Louisiana Department of Wildlife and Fisheries.

NOTE: It appears, according to our records, that a portion of this tract is located within the restrictive safety fairway area as set out by the Corps of Engineers, U.S. Army.

NOTE: The State of Louisiana does hereby reserve, and this lease shall be subject to, the imprescriptible right of surface use in the nature of a servitude in favor of the Department of Natural Resources, including its Offices and Commissions, for the sole purpose of implementing, constructing, servicing and maintaining approved coastal zone management and/or restoration projects. Utilization of any and all rights derived under this lease by the mineral lessee, its agents, successors or assigns, shall not interfere with nor hinder the reasonable surface use by the Department of Natural Resources, its Offices or Commissions, as hereinabove reserved.

Applicant: Leslie L. Moore