

Department of Natural Resources, its Offices or Commissions, as hereinabove reserved.

Applicant: WRB Oil Company

Bidder	Cash Payment	Price / Acre	Rental	Oil	Gas	Other

SL 15246

SL 15248

**TR 34185**  
**2,323 ± ACS.**  
**MAR, 2002**

**P.O.B.**  
X = 2,468,400.00  
Y = 276,000.00

R 25 E  
R 26 E

T

19

S

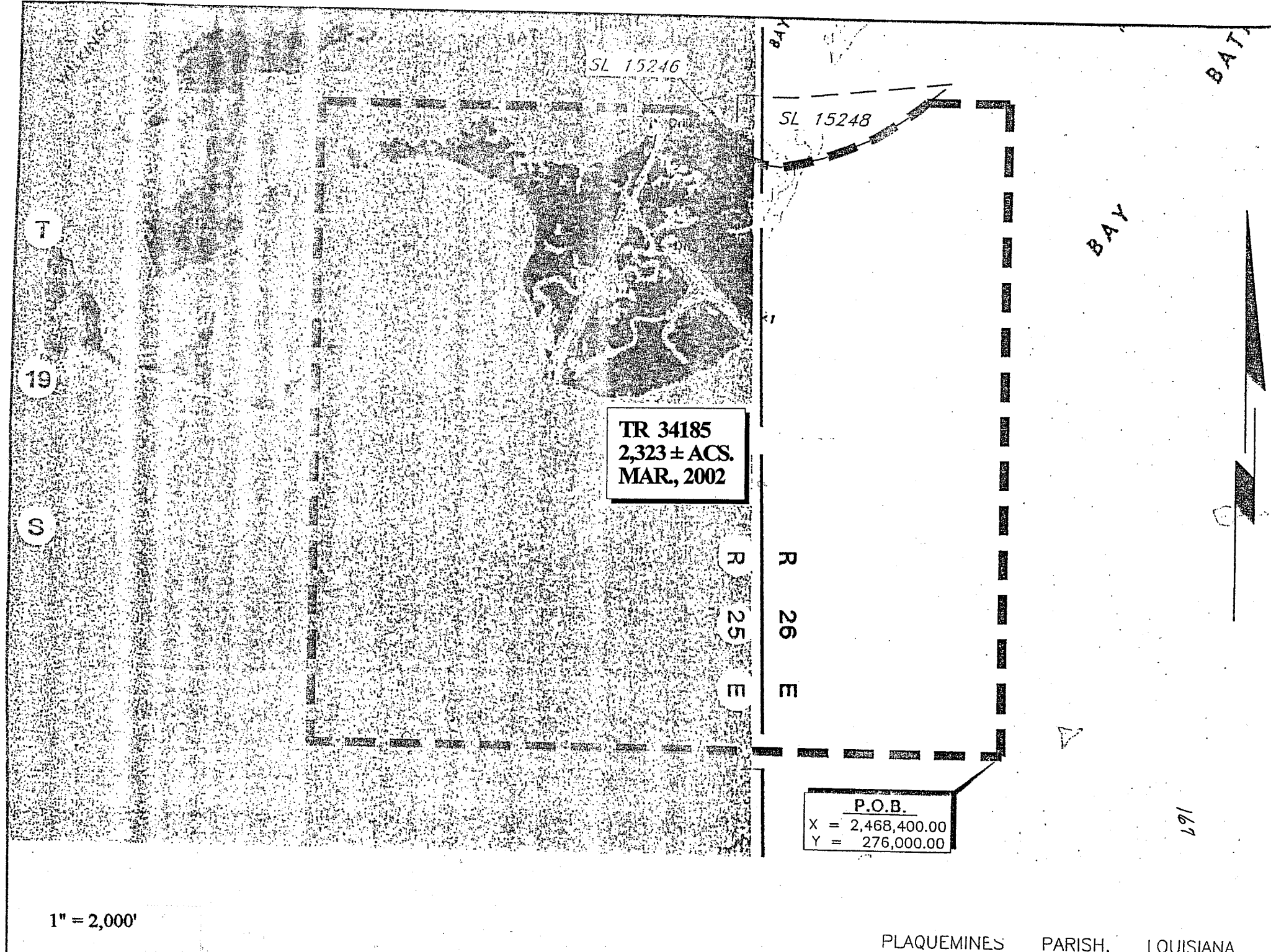
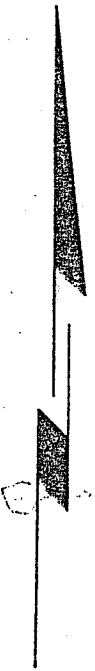
1" = 2,000'

PLAQUEMINES PARISH, LOUISIANA

167

BAY

BAY



**TRACT 34186 -Plaquemines Parish, Louisiana**

All of the lands now or formerly constituting the beds and bottoms of all water bodies of every nature and description and all islands and other lands formed by accretion or reliction, except tax lands, owned by and not under mineral lease from the State of Louisiana on March 13, 2002 situated in Plaquemines Parish, Louisiana, within the following described boundaries: Beginning at a point having Coordinates of X = 2,468,400.00 and Y = 276,000.00; thence North 10,914.00 feet to a point having Coordinates of X = 2,468,400.00 and Y = 286,914.00; thence East 7,100.00 feet to the Southern corner of State Lease No. 12036 having Coordinates of X = 2,475,500.00 and Y = 286,914.00; thence East 7,500.00 feet to a point having Coordinates of X = 2,483,000.00 and Y = 286,914.00; thence South approximately 7,831 feet to the intersection of the Northern boundary of State Lease No. 2028, as amended; thence Westerly approximately 5,772 feet along the Northern boundary of said State Lease No. 2028, as amended, to its most Northerly Northwest corner; thence Southerly approximately 3,007 feet along a Western boundary of said State Lease No. 2028, as amended, to the intersection of a line having a Coordinate of Y = 276,000 feet thence West approximately 8,868 feet to the point of beginning, containing approximately 2,247 acres, as shown outlined on a plat on file in the Office of Mineral Resources, Department of Natural Resources, as provided by the applicant. All bearings, distances and coordinates are based on Louisiana Coordinate System of 1927 (South Zone).

NOTE: The above description of the tract nominated for lease has been provided exclusively by the party nominating the tract for lease. The Louisiana State Mineral Board makes no representation as to the accuracy of the description of the nominated tract or its suitability for lease. The Louisiana State Mineral Board has made no inspection of the nominated tract for the existence of conflicting leases, operating agreements, private claims or other existing or future obligations or conditions which may affect all or any portion of the nominated tract or its suitability for lease.

Maps depicting the nominated tract, containing the bearings, distances and coordinates of the nominated tract based on the Louisiana Coordinate System of 1927, North or South Zone, as applicable, are available for public inspection and review at the offices of the Louisiana State Mineral Board from 10:00 a.m. to 3:00 p.m. Monday - Friday.

In the event of conflict between the description of the nominated tract set forth above and the description of the nominated property as contained on the maps maintained at the offices of the Louisiana State Mineral Board, the Louisiana State Mineral Board maps shall prevail and shall provide the final property description of the lease to be awarded of the nominated tract.

Any mineral lease of the nominated tract by the Louisiana State Mineral Board shall be without warranty of any kind, either express, implied, or statutory, including, but not limited to, the implied warranties or merchantability and fitness for a particular purpose. Should the mineral lease of the nominated tract awarded by the Louisiana State Mineral Board be subsequently modified, cancelled or abrogated due to the existence of

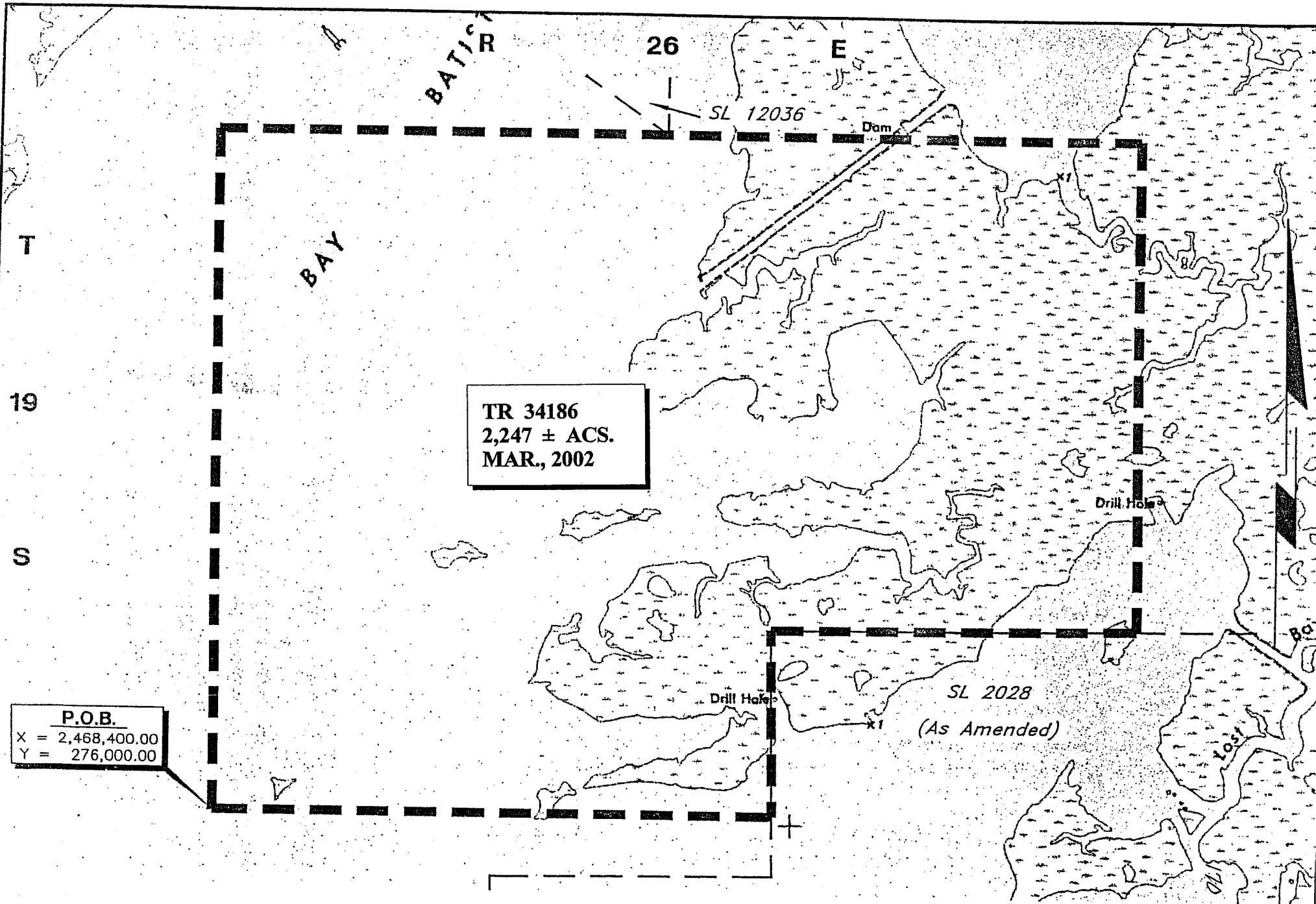
conflicting leases, operating agreements, private claims or other existing of future obligations or conditions which may affect all or any portion of the leased tract, it shall not relieve the Lessee of the obligation to pay any bonus due thereon to the Louisiana State Mineral Board, nor shall the Louisiana State Mineral Board be obligated to refund any consideration paid by the Lessee prior to such modification, cancellation, or abrogation, including, but not limited to, bonuses, rents and royalties.

NOTE: The above tract is located in or near an oyster restricted area and all operations in such area must be conducted in strict conformity with the stipulations and/or regulations of the Louisiana Department of Wildlife and Fisheries.

NOTE: The State of Louisiana does hereby reserve, and this lease shall be subject to, the imprescriptible right of surface use in the nature of a servitude in favor of the Department of Natural Resources, including its Offices and Commissions, for the sole purpose of implementing, constructing, servicing and maintaining approved coastal zone management and/or restoration projects. Utilization of any and all rights derived under this lease by the mineral lessee, its agents, successors or assigns, shall not interfere with nor hinder the reasonable surface use by the Department of Natural Resources, its Offices or Commissions, as hereinabove reserved.

Applicant: WRB Oil Company

Bidder	Cash Payment	Price / Acre	Rental	Oil	Gas	Other



TR 34186  
 2,247 ± ACS.  
 MAR., 2002

**P.O.B.**  
 X = 2,468,400.00  
 Y = 276,000.00

1" = 2,000'

**TRACT 34187 - PORTION OF BLOCK 54, WEST DELTA AREA, Plaquemines Parish, Louisiana**

All of the lands now or formerly constituting the beds and bottoms of all water bodies of every nature and description and all islands and other lands formed by accretion or reliction, except tax lands, belonging to the State of Louisiana and not under mineral lease on March 13, 2002, situated in Plaquemines Parish, Louisiana, and more particularly described as follows: Beginning at the most West Southwest corner of State Lease 979, as amended, also a point on the West line of said Block 54 having Coordinates of X = 2,615,927.93 and Y = 126,795.25; thence along the boundaries of said State Lease 979 the following courses: East 1,672.07 feet, Northeast to a point having Coordinates of X = 2,620,100.10 and Y = 129,700.00, and East to a point on the South line of said State Lease 979, having Coordinates of X = 2,624,300.10 and Y = 129,700.00, also a point on the west line of Operating Agreement 161; thence south 5,865.80 feet along the west line of said Operating Agreement 161 to its southwest corner and a point on the south line of said Block 54 having Coordinates of X = 2,624,300.10 and Y = 123,834.20; thence west 8,372.17 feet along the south line of said Block 54 to its southwest corner having Coordinates of X = 2,615,927.93 and Y = 123,834.20; thence north 2,961.05 feet to the point of beginning, estimated to contain **932.54 acres**, as shown outlined on a plat on file in the Office of Mineral Resources, Department of Natural Resources, as provided by the applicant. All bearings, distances and coordinates are based on Louisiana Coordinate System of 1927 (South Zone).

NOTE: The above description of the tract nominated for lease has been provided exclusively by the party nominating the tract for lease. The Louisiana State Mineral Board makes no representation as to the accuracy of the description of the nominated tract or its suitability for lease. The Louisiana State Mineral Board has made no inspection of the nominated tract for the existence of conflicting leases, operating agreements, private claims or other existing or future obligations or conditions which may affect all or any portion of the nominated tract or its suitability for lease.

Maps depicting the nominated tract, containing the bearings, distances and coordinates of the nominated tract based on the Louisiana Coordinate System of 1927, North or South Zone, as applicable, are available for public inspection and review at the offices of the Louisiana State Mineral Board from 10:00 a.m. to 3:00 p.m. Monday - Friday.

In the event of conflict between the description of the nominated tract set forth above and the description of the nominated property as contained on the maps maintained at the offices of the Louisiana State Mineral Board, the Louisiana State Mineral Board maps shall prevail and shall provide the final property description of the lease to be awarded of the nominated tract.

Any mineral lease of the nominated tract by the Louisiana State Mineral Board shall be without warranty of any kind, either express, implied, or statutory, including, but not limited to, the implied warranties or merchantability and fitness for a particular purpose. Should the mineral lease of the nominated tract awarded by the Louisiana State Mineral Board

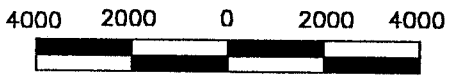
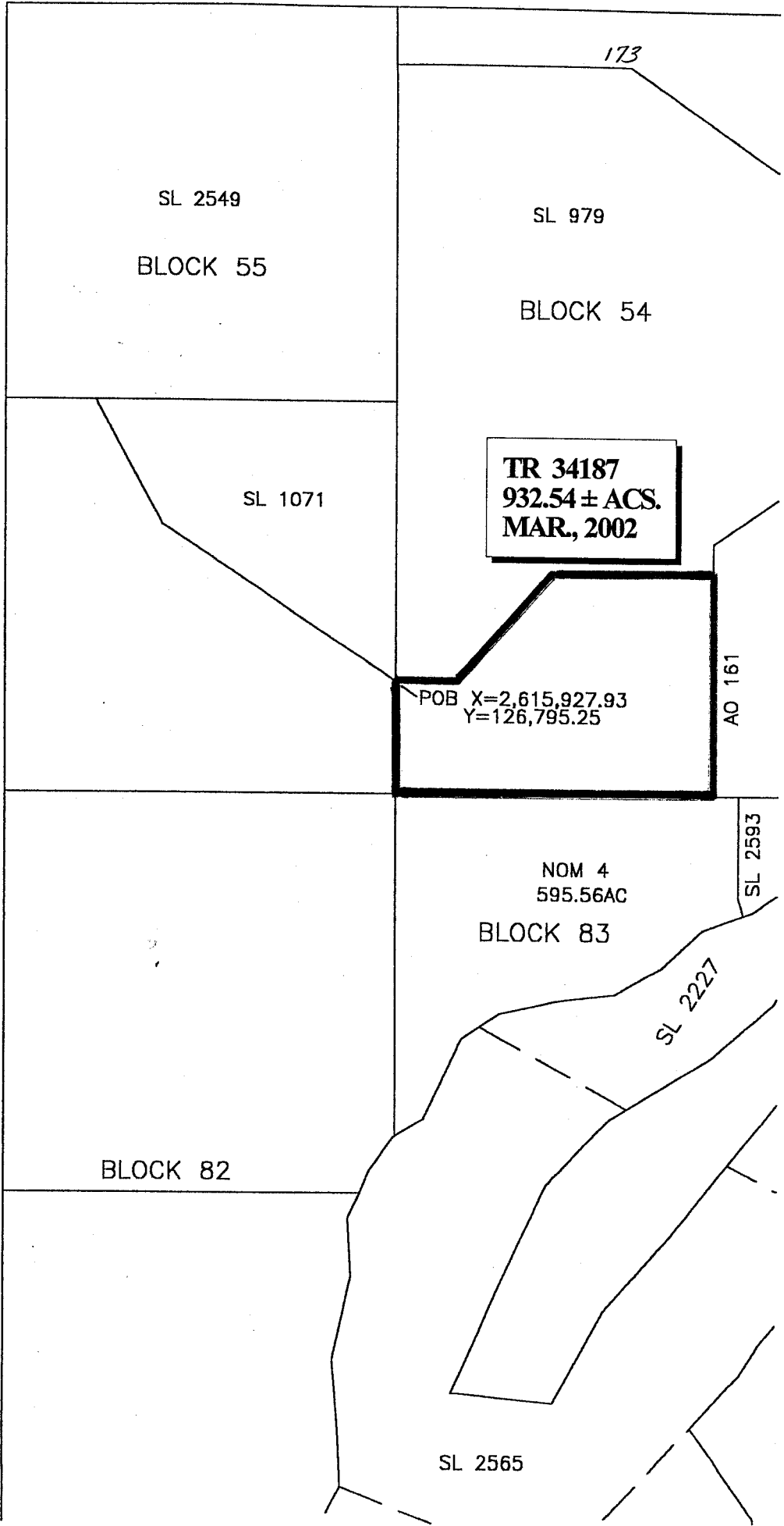
be subsequently modified, cancelled or abrogated due to the existence of conflicting leases, operating agreements, private claims or other existing of future obligations or conditions which may affect all or any portion of the leased tract, it shall not relieve the Lessee of the obligation to pay any bonus due thereon to the Louisiana State Mineral Board, nor shall the Louisiana State Mineral Board be obligated to refund any consideration paid by the Lessee prior to such modification, cancellation, or abrogation, including, but not limited to, bonuses, rents and royalties.

NOTE: The above tract is located in or near an oyster restricted area and all operations in such area must be conducted in strict conformity with the stipulations and/or regulations of the Louisiana Department of Wildlife and Fisheries.

NOTE: The State of Louisiana does hereby reserve, and this lease shall be subject to, the imprescriptible right of surface use in the nature of a servitude in favor of the Department of Natural Resources, including its Offices and Commissions, for the sole purpose of implementing, constructing, servicing and maintaining approved coastal zone management and/or restoration projects. Utilization of any and all rights derived under this lease by the mineral lessee, its agents, successors or assigns, shall not interfere with nor hinder the reasonable surface use by the Department of Natural Resources, its Offices or Commissions, as hereinabove reserved.

Applicant: Leslie L. Moore

Bidder	Cash Payment	Price / Acre	Rental	Oil	Gas	Other



1" = 4,000'

**WEST DELTA/SOUTH PASS AREA**  
Plaquemines Parish, Louisiana