

TR 34177
747 ± ACS.
MAR., 2002

X=2153011.98
Y=171053.72

X=2158162.64
Y=171080.97

P.O.B.
X=2150439.00
Y=167891.30

X=2150439.00
Y=164974.76

X=2158268.77
Y=165023.78

TERREBONNE PARISH, LOUISIANA



TRACT 34178 - Terrebonne Parish, Louisiana

All of the lands now or formerly constituting the beds and bottoms of all water bodies of every nature and description and all islands and other lands formed by accretion or reliction, except tax lands, owned by and not under mineral lease from the State of Louisiana on March 13, 2002, situated in Terrebonne Parish, Louisiana, within the following described boundaries: Beginning at a point having Coordinates of X = 2,150,439.19 and Y = 161,733.96, said point also being the Northwest corner of State Lease No. 16103, as amended; thence North 00 degrees 00 minutes 43 seconds West 907.04 feet to a point having Coordinates of X = 2,150,439.00 and Y = 162,641.00, said point also being the Southeast corner of State Lease No. 16100; thence North 2,333.76 feet on and along the East boundary of said State Lease No. 16100 to a point having Coordinates of X = 2,150,439.00 and Y = 164,974.76; thence North 89 degrees 38 minutes 29 seconds East 7,829.63 feet to a point having Coordinates of X = 2,158,268.47 and Y = 165,023.78; thence South 01 degrees 00 minutes 16 seconds East 7,016.04 feet to a point having Coordinates of X = 2,158,391.45 and Y = 158,008.81; thence South 88 degrees 28 minutes 32 seconds West 4,781.49 feet to a point having Coordinates of X = 2,153,611.65 and Y = 157,881.61, said point also being on the East boundary of said State Lease No. 16103; thence on and along the East and North boundaries of said State Lease No. 16103 the following courses and distances: North 3,852.35 feet to a point having Coordinates of X = 2,153,611.65 and Y = 161,733.96, said point also being the Northeast corner of said State Lease No. 16103 and West 3,172.46 feet to the point of beginning, containing approximately 690 acres, as shown outlined on a plat on file in the Office of Mineral Resources, Department of Natural Resources, as provided by the applicant. All bearings, distances and coordinates are based on Louisiana Coordinate System of 1927 (South Zone).

NOTE: The above description of the tract nominated for lease has been provided exclusively by the party nominating the tract for lease. The Louisiana State Mineral Board makes no representation as to the accuracy of the description of the nominated tract or its suitability for lease. The Louisiana State Mineral Board has made no inspection of the nominated tract for the existence of conflicting leases, operating agreements, private claims or other existing or future obligations or conditions which may affect all or any portion of the nominated tract or its suitability for lease.

Maps depicting the nominated tract, containing the bearings, distances and coordinates of the nominated tract based on the Louisiana Coordinate System of 1927, North or South Zone, as applicable, are available for public inspection and review at the offices of the Louisiana State Mineral Board from 10:00 a.m. to 3:00 p.m. Monday - Friday.

In the event of conflict between the description of the nominated tract set forth above and the description of the nominated property as contained on the maps maintained at the offices of the Louisiana State Mineral Board, the Louisiana State Mineral Board maps shall prevail and shall provide the final property description of the lease to be awarded of the nominated tract.

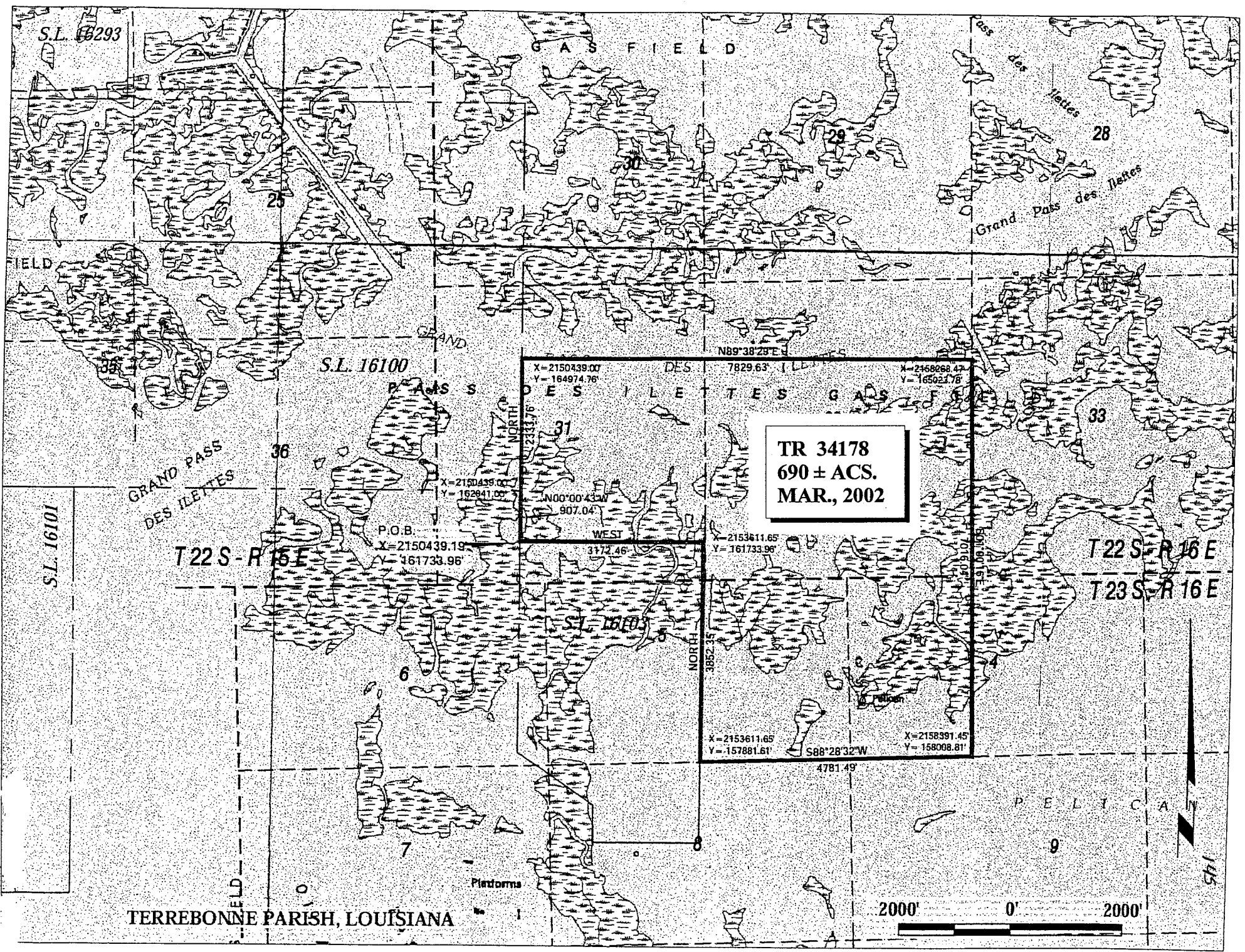
Any mineral lease of the nominated tract by the Louisiana State Mineral Board shall be without warranty of any kind, either express, implied, or statutory, including, but not limited to, the implied warranties or merchantability and fitness for a particular purpose. Should the mineral lease of the nominated tract awarded by the Louisiana State Mineral Board be subsequently modified, cancelled or abrogated due to the existence of conflicting leases, operating agreements, private claims or other existing of future obligations or conditions which may affect all or any portion of the leased tract, it shall not relieve the Lessee of the obligation to pay any bonus due thereon to the Louisiana State Mineral Board, nor shall the Louisiana State Mineral Board be obligated to refund any consideration paid by the Lessee prior to such modification, cancellation, or abrogation, including, but not limited to, bonuses, rents and royalties.

NOTE: The above tract is located in or near an oyster restricted area and all operations in such area must be conducted in strict conformity with the stipulations and/or regulations of the Louisiana Department of Wildlife and Fisheries.

NOTE: The State of Louisiana does hereby reserve, and this lease shall be subject to, the imprescriptible right of surface use in the nature of a servitude in favor of the Department of Natural Resources, including its Offices and Commissions, for the sole purpose of implementing, constructing, servicing and maintaining approved coastal zone management and/or restoration projects. Utilization of any and all rights derived under this lease by the mineral lessee, its agents, successors or assigns, shall not interfere with nor hinder the reasonable surface use by the Department of Natural Resources, its Offices or Commissions, as hereinabove reserved.

Applicant: The Louisiana Land and Exploration Company

Bidder	Cash Payment	Price / Acre	Rental	Oil	Gas	Other



S.L. 16293

S.L. 16101

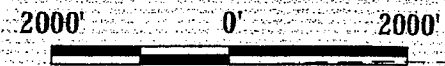
TR 34178
690 ± ACS.
MAR., 2002

T 22 S - R 16 E

T 22 S - R 16 E

T 23 S - R 16 E

TERREBONNE PARISH, LOUISIANA



TRACT 34179 - Jefferson and St. Charles Parishes, Louisiana

All of the lands now or formerly constituting the beds and bottoms of all water bodies of every nature and description and all islands and other lands formed by accretion or reliction, except tax lands, owned by and not under mineral lease from the State of Louisiana on March 13, 2002, situated in Jefferson and St. Charles Parishes, Louisiana, within the following described boundaries: Beginning at a point having Coordinates of X = 2,349,527.9648 and Y = 438,490.7689; thence Northeast 6,476.8703 feet to a point having Coordinates of X = 2,355,363.9436 and Y = 441,299.8970; thence Southeast 16,621.1223 feet to a point having Coordinates X = 2,362,538.6025 and Y = 426,412.7251; thence Southwest 6,611.3382 feet to a point having Coordinates of X = 2,356,623.1906 and Y = 423,460.1509; thence Northwest 16,621.1223 feet to the point of beginning, containing approximately **1,797.50 acres**, as shown outlined on a plat on file in the Office of Mineral Resources, Department of Natural Resources, as provided by the applicant. All bearings, distances and coordinates are based on Louisiana Coordinate System of 1927 (South Zone).

NOTE: The above description of the tract nominated for lease has been provided exclusively by the party nominating the tract for lease. The Louisiana State Mineral Board makes no representation as to the accuracy of the description of the nominated tract or its suitability for lease. The Louisiana State Mineral Board has made no inspection of the nominated tract for the existence of conflicting leases, operating agreements, private claims or other existing or future obligations or conditions which may affect all or any portion of the nominated tract or its suitability for lease.

Maps depicting the nominated tract, containing the bearings, distances and coordinates of the nominated tract based on the Louisiana Coordinate System of 1927, North or South Zone, as applicable, are available for public inspection and review at the offices of the Louisiana State Mineral Board from 10:00 a.m. to 3:00 p.m. Monday - Friday.

In the event of conflict between the description of the nominated tract set forth above and the description of the nominated property as contained on the maps maintained at the offices of the Louisiana State Mineral Board, the Louisiana State Mineral Board maps shall prevail and shall provide the final property description of the lease to be awarded of the nominated tract.

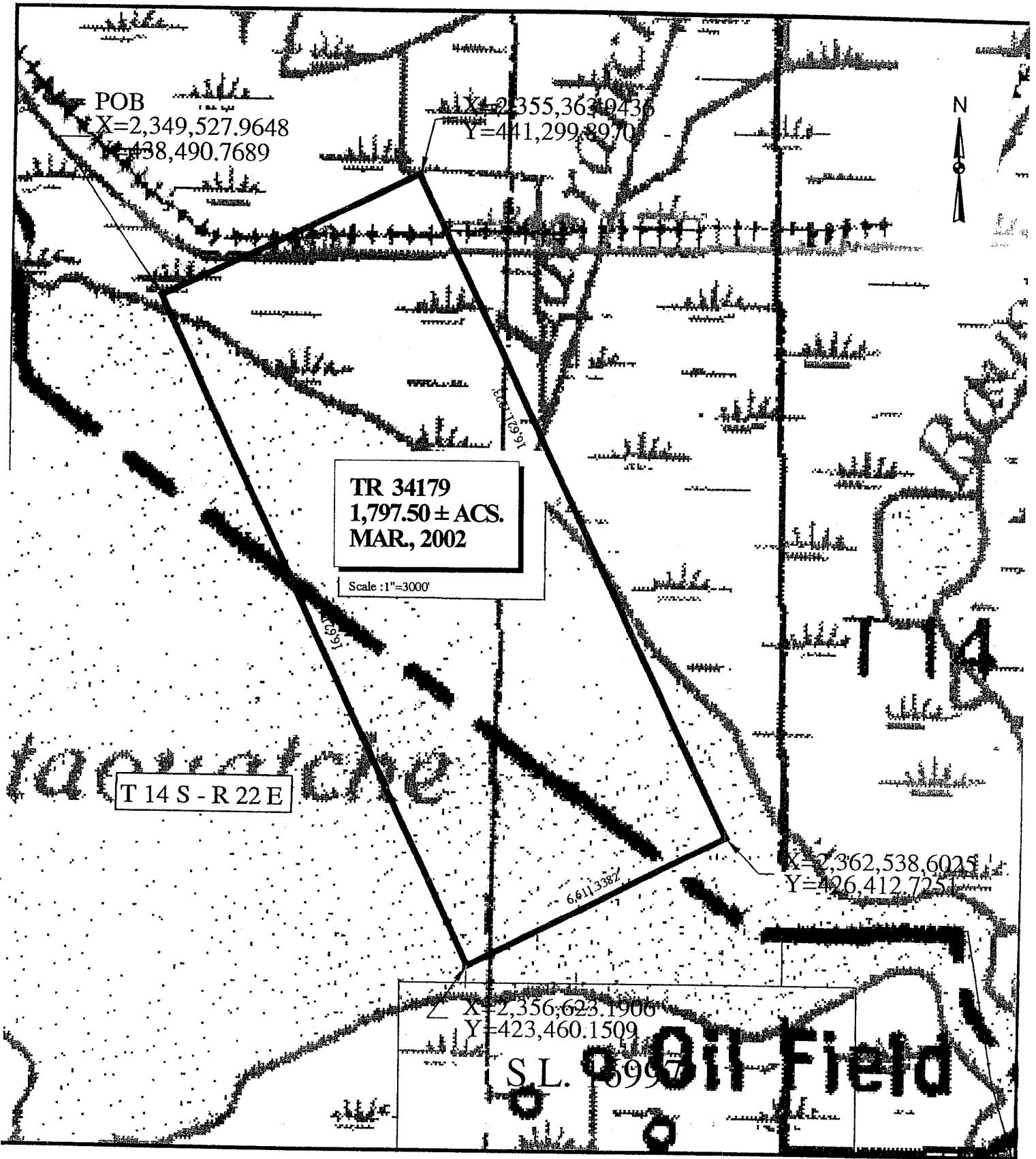
Any mineral lease of the nominated tract by the Louisiana State Mineral Board shall be without warranty of any kind, either express, implied, or statutory, including, but not limited to, the implied warranties or merchantability and fitness for a particular purpose. Should the mineral lease of the nominated tract awarded by the Louisiana State Mineral Board be subsequently modified, cancelled or abrogated due to the existence of conflicting leases, operating agreements, private claims or other existing of future obligations or conditions which may affect all or any portion of the leased tract, it shall not relieve the Lessee of the obligation to pay any bonus due thereon to the Louisiana State Mineral Board, nor shall the Louisiana State Mineral Board be obligated to refund any consideration

paid by the Lessee prior to such modification, cancellation, or abrogation, including, but not limited to, bonuses, rents and royalties.

NOTE: The State of Louisiana does hereby reserve, and this lease shall be subject to, the imprescriptible right of surface use in the nature of a servitude in favor of the Department of Natural Resources, including its Offices and Commissions, for the sole purpose of implementing, constructing, servicing and maintaining approved coastal zone management and/or restoration projects. Utilization of any and all rights derived under this lease by the mineral lessee, its agents, successors or assigns, shall not interfere with nor hinder the reasonable surface use by the Department of Natural Resources, its Offices or Commissions, as hereinabove reserved.

Applicant: Gerie C. Stelly

Bidder	Cash Payment	Price / Acre	Rental	Oil	Gas	Other



TRACT 34180 - Jefferson and St. Charles Parishes, Louisiana

All of the lands now or formerly constituting the beds and bottoms of all water bodies of every nature and description and all islands and other lands formed by accretion or reliction, except tax lands, owned by and not under mineral lease from the State of Louisiana on March 13, 2002, situated in Jefferson and St. Charles Parishes, Louisiana, within the following described boundaries: Beginning of a point having a Coordinates of X = 2,343,519.7562 and Y = 435,612.6115; thence Northeast 6,662.0088 feet to a point having Coordinates of X = 2,349,527.9648 and Y = 438,490.7689; thence Southeast 16,621.1223 feet to a point having Coordinates X = 2,356,623.1906 and Y = 423,460.1509; thence Southwest 1,034.7830 feet to a point having Coordinates of X = 2,355,662.3448 and Y = 423,076.000; said point also on the North boundary of State Lease No. 16997; thence west along the North boundary of State Lease 16997, 578.3448 feet; to a point having Coordinates of X = 2,355,048.00 and Y = 423,076.000 or the Northwest corner of State Lease 16997; thence along the West boundary line of said State Lease 16997 a distance of 263.7820 feet to a point having Coordinates of X = 2,355,084.00 and Y = 422,812.2180; thence Southwest 4,818.885 feet to a point having Coordinates of X = 2,350,733.7440 and Y = 420,739.3148; thence Northwest 16,531.6839 feet to the point of beginning, containing approximately **2,495.25 acres**, as shown outlined on a plat on file in the Office of Mineral Resources, Department of Natural Resources, as provided by the applicant. All bearings, distances and coordinates are based on Louisiana Coordinate System of 1927 (South Zone).

NOTE: The above description of the tract nominated for lease has been provided exclusively by the party nominating the tract for lease. The Louisiana State Mineral Board makes no representation as to the accuracy of the description of the nominated tract or its suitability for lease. The Louisiana State Mineral Board has made no inspection of the nominated tract for the existence of conflicting leases, operating agreements, private claims or other existing or future obligations or conditions which may affect all or any portion of the nominated tract or its suitability for lease.

Maps depicting the nominated tract, containing the bearings, distances and coordinates of the nominated tract based on the Louisiana Coordinate System of 1927, North or South Zone, as applicable, are available for public inspection and review at the offices of the Louisiana State Mineral Board from 10:00 a.m. to 3:00 p.m. Monday - Friday.

In the event of conflict between the description of the nominated tract set forth above and the description of the nominated property as contained on the maps maintained at the offices of the Louisiana State Mineral Board, the Louisiana State Mineral Board maps shall prevail and shall provide the final property description of the lease to be awarded of the nominated tract.

Any mineral lease of the nominated tract by the Louisiana State Mineral Board shall be without warranty of any kind, either express, implied, or statutory, including, but not limited to, the implied warranties or merchantability and fitness for a particular purpose. Should the mineral