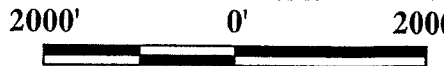


TR 34172
752 ± ACS.
MAR, 2002

X=1,998,294.53
Y= 308,812.63

P.O.B
X=1,998,294.53
Y= 298,921.09

ST. MARY PARISH, LOUISIANA



TRACT 34173 - St. Mary Parish, Louisiana

All of the lands now or formerly constituting the beds and bottoms of all water bodies of every nature and description and all islands and other lands formed by accretion or reliction, except tax lands, owned by and not under mineral lease from the State of Louisiana on March 13, 2002, situated in St. Mary Parish, Louisiana, within the following described boundaries: Beginning at the Northeast corner of State Lease 5097, as amended, having Coordinates of X = 2,007,077.03 and Y = 292,348.58; thence along the Northern boundary of said State Lease No. 5097, as amended, Southwesterly along a curve to the right with a radius of 10,141.00 feet, an arc length of 1,464.76 feet and a long chord of South 53 degrees 55 minutes 13 seconds West 1,463.49 feet to a corner having Coordinates of X = 2,005,894.24 and Y = 291,486.72; thence North 60 degrees 09 minutes 18 seconds West 95.91 feet along the Northern boundary of said State Lease No. 5097, as amended, to a corner having Coordinates of X = 2,005,811.05 and Y = 291,534.45; thence along the Northern boundary of said State Lease No. 5097, as amended, Northwesterly along a curve to the left with a radius of 7,000.00 feet, an arc length of 3,083.14 feet and a long chord of North 73 degrees 09 minutes 47 seconds West 3,058.28 feet to a corner having Coordinates of X = 2,002,883.87 and Y = 292,420.27; thence along the Northern boundary of said State Lease No. 5097, as amended, Southwesterly along a curve to the left with a radius of 6,200.00 feet, an arc length of 4,782.43 feet and a long chord of South 73 degrees 09 minutes 07 seconds West 4,664.75 feet to a corner having Coordinates of X = 1,998,419.35 and Y = 291,068.26; thence along the Northern boundary of said State Lease No. 5097, as amended, Southwesterly along a curve to the left with a radius of 15,381.00 feet, an arc length of 75.63 feet and a long chord of South 50 degrees 28 minutes 40 seconds West 75.63 feet to a corner having Coordinates of X = 1,998,361.01 and Y = 291,020.13; thence South 68 degrees 13 minutes 16 seconds West 5,861.07 feet along the Northern boundary of said State Lease No. 5097, as amended, to its Northwest corner having Coordinates X = 1,992,918.29 and Y = 288,845.51; thence North 10,075.58 feet to a point having Coordinates of X = 1,992,918.29 and Y = 298,921.09; thence East 14,158.74 feet to a point having Coordinates of X = 2,007,077.03 and Y = 298,921.09; thence South 6,572.51 feet to the point of beginning, containing approximately **2,326 acres**, as shown outlined on a plat on file in the Office of Mineral Resources, Department of Natural Resources, as provided by the applicant. All bearings, distances and coordinates are based on Louisiana Coordinate System of 1927 (South Zone).

NOTE: The above description of the tract nominated for lease has been provided exclusively by the party nominating the tract for lease. The Louisiana State Mineral Board makes no representation as to the accuracy of the description of the nominated tract or its suitability for lease. The Louisiana State Mineral Board has made no inspection of the nominated tract for the existence of conflicting leases, operating agreements, private claims or other existing or future obligations or conditions which may affect all or any portion of the nominated tract or its suitability for lease.

Maps depicting the nominated tract, containing the bearings, distances and coordinates of the nominated tract based on the Louisiana Coordinate System of 1927, North or South Zone, as applicable, are available for public inspection and review at the offices of the Louisiana State Mineral Board from 10:00 a.m. to 3:00 p.m. Monday - Friday.

In the event of conflict between the description of the nominated tract set forth above and the description of the nominated property as contained on the maps maintained at the offices of the Louisiana State Mineral Board, the Louisiana State Mineral Board maps shall prevail and shall provide the final property description of the lease to be awarded of the nominated tract.

Any mineral lease of the nominated tract by the Louisiana State Mineral Board shall be without warranty of any kind, either express, implied, or statutory, including, but not limited to, the implied warranties or merchantability and fitness for a particular purpose. Should the mineral lease of the nominated tract awarded by the Louisiana State Mineral Board be subsequently modified, cancelled or abrogated due to the existence of conflicting leases, operating agreements, private claims or other existing of future obligations or conditions which may affect all or any portion of the leased tract, it shall not relieve the Lessee of the obligation to pay any bonus due thereon to the Louisiana State Mineral Board, nor shall the Louisiana State Mineral Board be obligated to refund any consideration paid by the Lessee prior to such modification, cancellation, or abrogation, including, but not limited to, bonuses, rents and royalties.

NOTE: The above tract is located in or near an oyster restricted area and all operations in such area must be conducted in strict conformity with the stipulations and/or regulations of the Louisiana Department of Wildlife and Fisheries.

NOTE: This tract may be located within the Atchafalaya Delta Wildlife Management Area. Any operations on said tract shall be coordinated with the Louisiana Department of Wildlife and Fisheries. Special Rules and Regulations have been promulgated by the Louisiana Department of Wildlife and Fisheries for the protection of the game and wildlife for some management areas. Any lease awarded by the Board on said tract shall be subject to any applicable Rules and Regulations of said management area. Copies of these Rules and Regulations may be obtained from the Louisiana Department of Wildlife and Fisheries through the Assistant Secretary, Office of Wildlife, upon request.

NOTE: The State of Louisiana does hereby reserve, and this lease shall be subject to, the imprescriptible right of surface use in the nature of a servitude in favor of the Department of Natural Resources, including its Offices and Commissions, for the sole purpose of implementing, constructing, servicing and maintaining approved coastal zone management and/or restoration projects. Utilization of any and all rights derived under this lease by the mineral lessee, its agents, successors or assigns, shall not interfere with nor hinder the reasonable surface use by the

Department of Natural Resources, its Offices or Commissions, as hereinabove reserved.

Applicant: Harold J. Anderson, Inc.

Bidder	Cash Payment	Price / Acre	Rental	Oil	Gas	Other

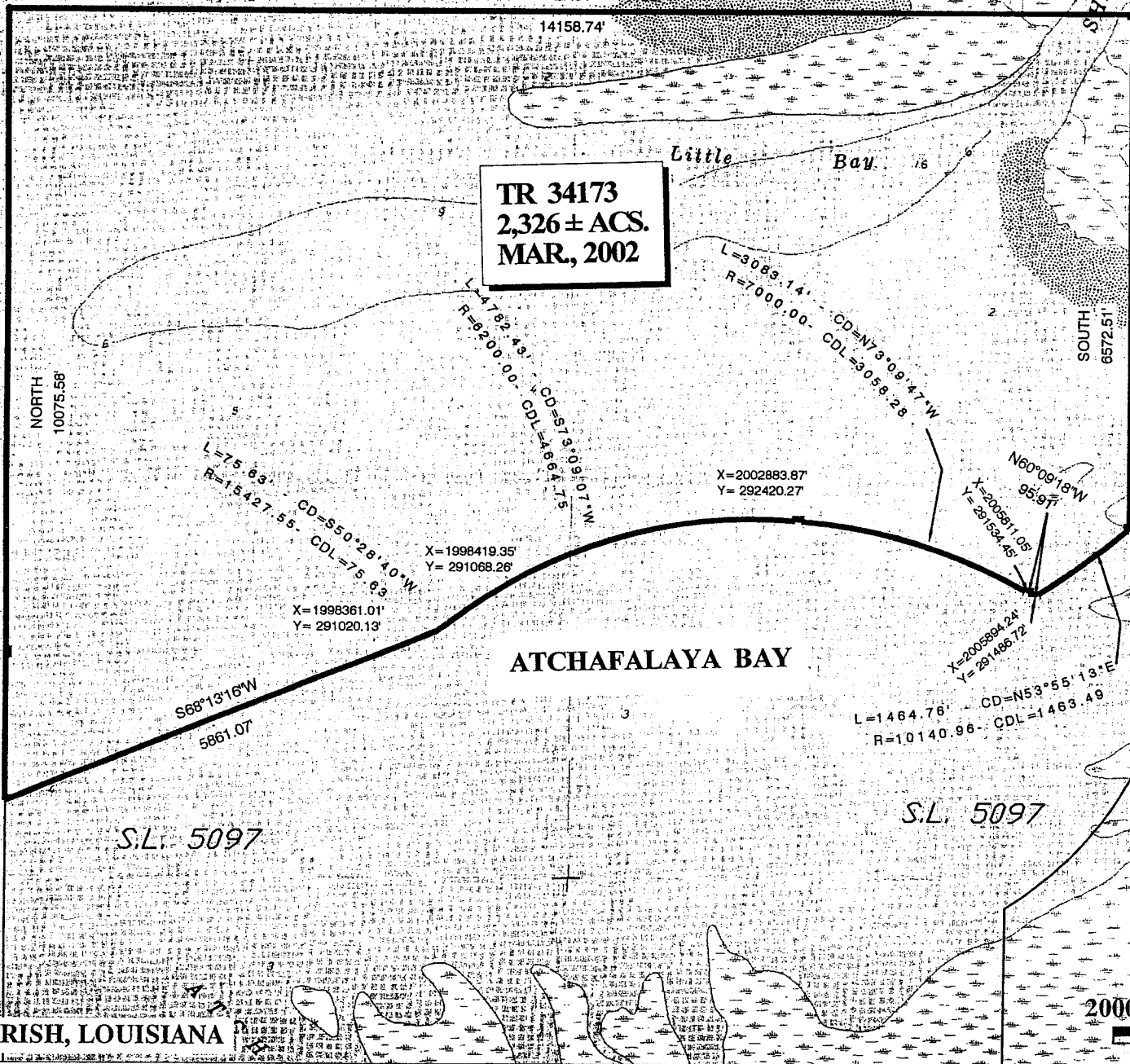
L. 340

X=1992918.29
Y=298921.09

X=2007077.03
Y=298921.09

TR 34173
2,326 ± ACS.
MAR, 2002

P.O.B.
X=2,007,077.03'
Y= 292,348.58'



ST. MARY PARISH, LOUISIANA

2000' 0' 200

TRACT 34174 - St. Mary Parish, Louisiana

All of the lands now or formerly constituting the beds and bottoms of all water bodies of every nature and description and all islands and other lands formed by accretion or reliction, except tax lands, owned by and not under mineral lease from the State of Louisiana on March 13, 2002, situated in St. Mary Parish, Louisiana, within the following described boundaries: Beginning at the Northeast corner of State Lease 5097, as amended, having Coordinates of X = 2,007,077.03 and Y = 292,348.58; thence North 6,572.51 feet to a point having Coordinates of X = 2,007,077.03 and Y = 298,921.09; thence East 7,922.97 feet to a point having Coordinates of X = 2,0150,00.00 and Y = 298,921.09; thence South 11,393.30 feet to a point having Coordinates of X = 2,015,000.00 and Y = 287,527.79; thence West 9,442.15 feet to a corner on the Eastern boundary of State Lease No. 5097, as amended, having Coordinates of X = 2,005,557.85 and Y = 287,527.79; thence along the Eastern boundary of said State Lease No. 5097, as amended, Northeasterly along a curve to the left with a radius of 4,600.00 feet, an arc length of 2,120.54 feet and a long chord of North 44 degrees 27 minutes 11 seconds East 2,101.82 feet to a corner having Coordinates of X = 2,007,029.80 and Y = 289,028.12; thence along the Eastern boundary of said State Lease No. 5097, as amended, Northeasterly along a curve to the left with a radius of 3,200.00 feet, an arc length of 3,491.42 feet and a long chord of North 00 degrees 48 minutes 54 seconds East 3,320.80 feet to the point of beginning, containing approximately **1,387 acres**, as shown outlined on a plat on file in the Office of Mineral Resources, Department of Natural Resources, as provided by the applicant. All bearings, distances and coordinates are based on Louisiana Coordinate System of 1927 (South Zone).

NOTE: The above description of the tract nominated for lease has been provided exclusively by the party nominating the tract for lease. The Louisiana State Mineral Board makes no representation as to the accuracy of the description of the nominated tract or its suitability for lease. The Louisiana State Mineral Board has made no inspection of the nominated tract for the existence of conflicting leases, operating agreements, private claims or other existing or future obligations or conditions which may affect all or any portion of the nominated tract or its suitability for lease.

Maps depicting the nominated tract, containing the bearings, distances and coordinates of the nominated tract based on the Louisiana Coordinate System of 1927, North or South Zone, as applicable, are available for public inspection and review at the offices of the Louisiana State Mineral Board from 10:00 a.m. to 3:00 p.m. Monday - Friday.

In the event of conflict between the description of the nominated tract set forth above and the description of the nominated property as contained on the maps maintained at the offices of the Louisiana State Mineral Board, the Louisiana State Mineral Board maps shall prevail and shall provide the final property description of the lease to be awarded of the nominated tract.

Any mineral lease of the nominated tract by the Louisiana State Mineral Board shall be without warranty of any kind, either express, implied, or

statutory, including, but not limited to, the implied warranties or merchantability and fitness for a particular purpose. Should the mineral lease of the nominated tract awarded by the Louisiana State Mineral Board be subsequently modified, cancelled or abrogated due to the existence of conflicting leases, operating agreements, private claims or other existing of future obligations or conditions which may affect all or any portion of the leased tract, it shall not relieve the Lessee of the obligation to pay any bonus due thereon to the Louisiana State Mineral Board, nor shall the Louisiana State Mineral Board be obligated to refund any consideration paid by the Lessee prior to such modification, cancellation, or abrogation, including, but not limited to, bonuses, rents and royalties.

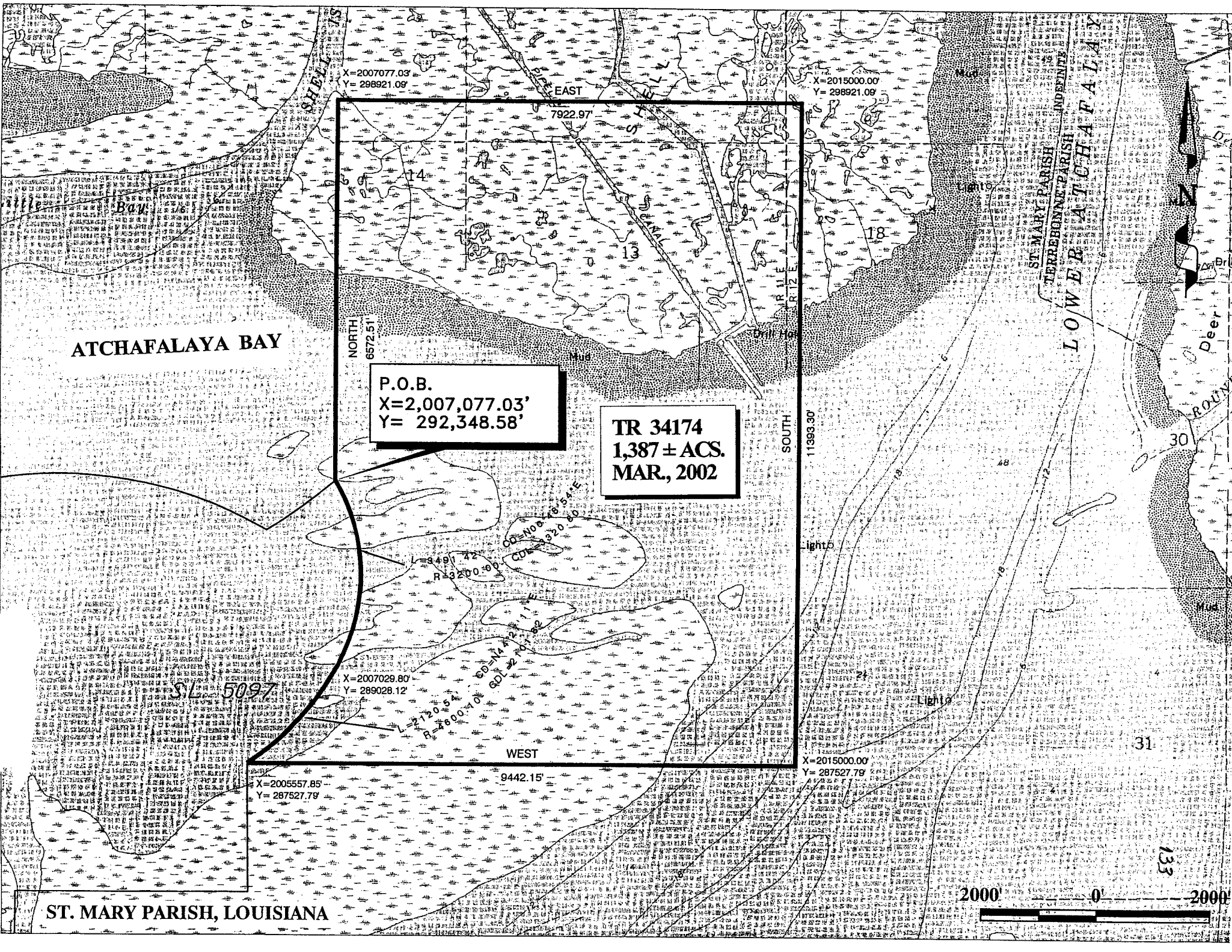
NOTE: The above tract is located in or near an oyster restricted area and all operations in such area must be conducted in strict conformity with the stipulations and/or regulations of the Louisiana Department of Wildlife and Fisheries.

NOTE: This tract may be located within the Atchafalaya Delta Wildlife Management Area. Any operations on said tract shall be coordinated with the Louisiana Department of Wildlife and Fisheries. Special Rules and Regulations have been promulgated by the Louisiana Department of Wildlife and Fisheries for the protection of the game and wildlife for some management areas. Any lease awarded by the Board on said tract shall be subject to any applicable Rules and Regulations of said management area. Copies of these Rules and Regulations may be obtained from the Louisiana Department of Wildlife and Fisheries through the Assistant Secretary, Office of Wildlife, upon request.

NOTE: The State of Louisiana does hereby reserve, and this lease shall be subject to, the imprescriptible right of surface use in the nature of a servitude in favor of the Department of Natural Resources, including its Offices and Commissions, for the sole purpose of implementing, constructing, servicing and maintaining approved coastal zone management and/or restoration projects. Utilization of any and all rights derived under this lease by the mineral lessee, its agents, successors or assigns, shall not interfere with nor hinder the reasonable surface use by the Department of Natural Resources, its Offices or Commissions, as hereinabove reserved.

Applicant: Harold J. Anderson, Inc.

Bidder	Cash Payment	Price / Acre	Rental	Oil	Gas	Other



X=2007077.03
Y=298921.09

X=2015000.00
Y=298921.09

ATCHAFALAYA BAY

NORTH
6572.51'

P.O.B.
X=2,007,077.03'
Y=292,348.58'

TR 34174
1,387 ± ACS.
MAR., 2002

SOUTH
11393.30'

X=2007029.80
Y=289028.12

X=2005557.85
Y=287527.79

X=2015000.00
Y=287527.79

ST. MARY PARISH, LOUISIANA

