

TRACT 34255 - PORTION OF BLOCK 10, CHANDELEUR SOUND AREA, St. Bernard Parish, Louisiana

All of the lands now or formerly constituting the beds and bottoms of all water bodies of every nature and description and all islands and other lands formed by accretion or reliction, except tax lands, belonging to the State of Louisiana and not under mineral lease on March 13, 2002, situated in St. Bernard Parish, Louisiana, and more particularly described as follows: Beginning at a point being the Southeast corner of Block 10, Chandeleur Sound Area, having Coordinates of X = 2,768,100.00 and Y = 455,080.00; thence West 14,750.00 feet to the Southwest corner of Block 10 to a point having Coordinates of X = 2,753,350.00 and Y = 455,080.00; thence North 7,375.00 feet to a point having Coordinates of X = 2,753,350.00 and Y = 462,455.00; thence East 14,750.00 feet to a point having Coordinates of X = 2,768,100.00 and Y = 462,455.00; thence South 7,375.00 feet to the point of beginning, containing approximately **2,497.27 acres**, as shown outlined on a plat on file in the Office of Mineral Resources, Department of Natural Resources, as provided by the applicant. All bearings, distances and coordinates are based on Louisiana Coordinate System of 1927 (South Zone).

NOTE: The above description of the tract nominated for lease has been provided exclusively by the party nominating the tract for lease. The Louisiana State Mineral Board makes no representation as to the accuracy of the description of the nominated tract or its suitability for lease. The Louisiana State Mineral Board has made no inspection of the nominated tract for the existence of conflicting leases, operating agreements, private claims or other existing or future obligations or conditions which may affect all or any portion of the nominated tract or its suitability for lease.

Maps depicting the nominated tract, containing the bearings, distances and coordinates of the nominated tract based on the Louisiana Coordinate System of 1927, North or South Zone, as applicable, are available for public inspection and review at the offices of the Louisiana State Mineral Board from 10:00 a.m. to 3:00 p.m. Monday - Friday.

In the event of conflict between the description of the nominated tract set forth above and the description of the nominated property as contained on the maps maintained at the offices of the Louisiana State Mineral Board, the Louisiana State Mineral Board maps shall prevail and shall provide the final property description of the lease to be awarded of the nominated tract.

Any mineral lease of the nominated tract by the Louisiana State Mineral Board shall be without warranty of any kind, either express, implied, or statutory, including, but not limited to, the implied warranties or merchantability and fitness for a particular purpose. Should the mineral lease of the nominated tract awarded by the Louisiana State Mineral Board be subsequently modified, cancelled or abrogated due to the existence of conflicting leases, operating agreements, private claims or other existing of future obligations or conditions which may affect all or any portion of the leased tract, it shall not relieve the Lessee of the obligation to pay any bonus due thereon to the Louisiana State Mineral Board, nor shall the

Louisiana State Mineral Board be obligated to refund any consideration paid by the Lessee prior to such modification, cancellation, or abrogation, including, but not limited to, bonuses, rents and royalties.

NOTE: The Office of Mineral Resources will require a minimum bonus of \$130 per acre and a minimum royalty of 21%.

NOTE: The State of Louisiana does hereby reserve, and this lease shall be subject to, the imprescriptible right of surface use in the nature of a servitude in favor of the Department of Natural Resources, including its Offices and Commissions, for the sole purpose of implementing, constructing, servicing and maintaining approved coastal zone management and/or restoration projects. Utilization of any and all rights derived under this lease by the mineral lessee, its agents, successors or assigns, shall not interfere with nor hinder the reasonable surface use by the Department of Natural Resources, its Offices or Commissions, as hereinabove reserved.

Applicant: Crossroads Energy

Bidder	Cash Payment	Price / Acre	Rental	Oil	Gas	Other

377



9

10

TR 34255
2,497.27 ± ACS.
MAR., 2002

14

13

P.O.B.
X=2,768,100.00
Y= 455,080.00

NORTH ISLANDS



CHANDELEUR SOUND AREA
ST. BERNARD PARISH, LOUISIANA

SCALE: 1" = 4000'

TRACT 34256 - PORTION OF BLOCK 19, CHANDELEUR SOUND AREA, St. Bernard Parish, Louisiana

All of the lands now or formerly constituting the beds and bottoms of all water bodies of every nature and description and all islands and other lands formed by accretion or reliction, except tax lands, belonging to the State of Louisiana and not under mineral lease on March 13, 2002, situated in St. Bernard Parish, Louisiana, and more particularly described as follows: Beginning at a point being the Northwest corner of Block 19, Chandeleur Sound Area, having Coordinates of X = 2,664,850.00 and Y = 455,080.00; thence East 3,183.25 feet to the Northwest corner of State Lease No. 16524 having Coordinates of X = 2,668,033.25 and Y = 455,080.00; thence along said State Lease No. 16524 the following courses: South 48 degrees 24 minutes 38 seconds East 2,942.83 feet and South 54 degrees 30 minutes 47 seconds East 1,437.63 feet to a point having Coordinates of X = 2,671,404.84 and Y = 452,292.01; thence South 11,962.01 feet to a point having Coordinates of X = 2,671,404.84 and Y = 440,330.00; thence West 6,554.84 feet to the Southwest corner of Block 19 having Coordinates of X = 2,664,850.00 and Y = 440,330.00; thence North 14,750.00 feet to the point of beginning, containing approximately **2,106.50 acres**, as shown outlined on a plat on file in the Office of Mineral Resources, Department of Natural Resources, as provided by the applicant. All bearings, distances and coordinates are based on Louisiana Coordinate System of 1927 (South Zone).

NOTE: The above description of the tract nominated for lease has been provided exclusively by the party nominating the tract for lease. The Louisiana State Mineral Board makes no representation as to the accuracy of the description of the nominated tract or its suitability for lease. The Louisiana State Mineral Board has made no inspection of the nominated tract for the existence of conflicting leases, operating agreements, private claims or other existing or future obligations or conditions which may affect all or any portion of the nominated tract or its suitability for lease.

Maps depicting the nominated tract, containing the bearings, distances and coordinates of the nominated tract based on the Louisiana Coordinate System of 1927, North or South Zone, as applicable, are available for public inspection and review at the offices of the Louisiana State Mineral Board from 10:00 a.m. to 3:00 p.m. Monday - Friday.

In the event of conflict between the description of the nominated tract set forth above and the description of the nominated property as contained on the maps maintained at the offices of the Louisiana State Mineral Board, the Louisiana State Mineral Board maps shall prevail and shall provide the final property description of the lease to be awarded of the nominated tract.

Any mineral lease of the nominated tract by the Louisiana State Mineral Board shall be without warranty of any kind, either express, implied, or statutory, including, but not limited to, the implied warranties or merchantability and fitness for a particular purpose. Should the mineral lease of the nominated tract awarded by the Louisiana State Mineral Board be subsequently modified, cancelled or abrogated due to the existence of

conflicting leases, operating agreements, private claims or other existing of future obligations or conditions which may affect all or any portion of the leased tract, it shall not relieve the Lessee of the obligation to pay any bonus due thereon to the Louisiana State Mineral Board, nor shall the Louisiana State Mineral Board be obligated to refund any consideration paid by the Lessee prior to such modification, cancellation, or abrogation, including, but not limited to, bonuses, rents and royalties.

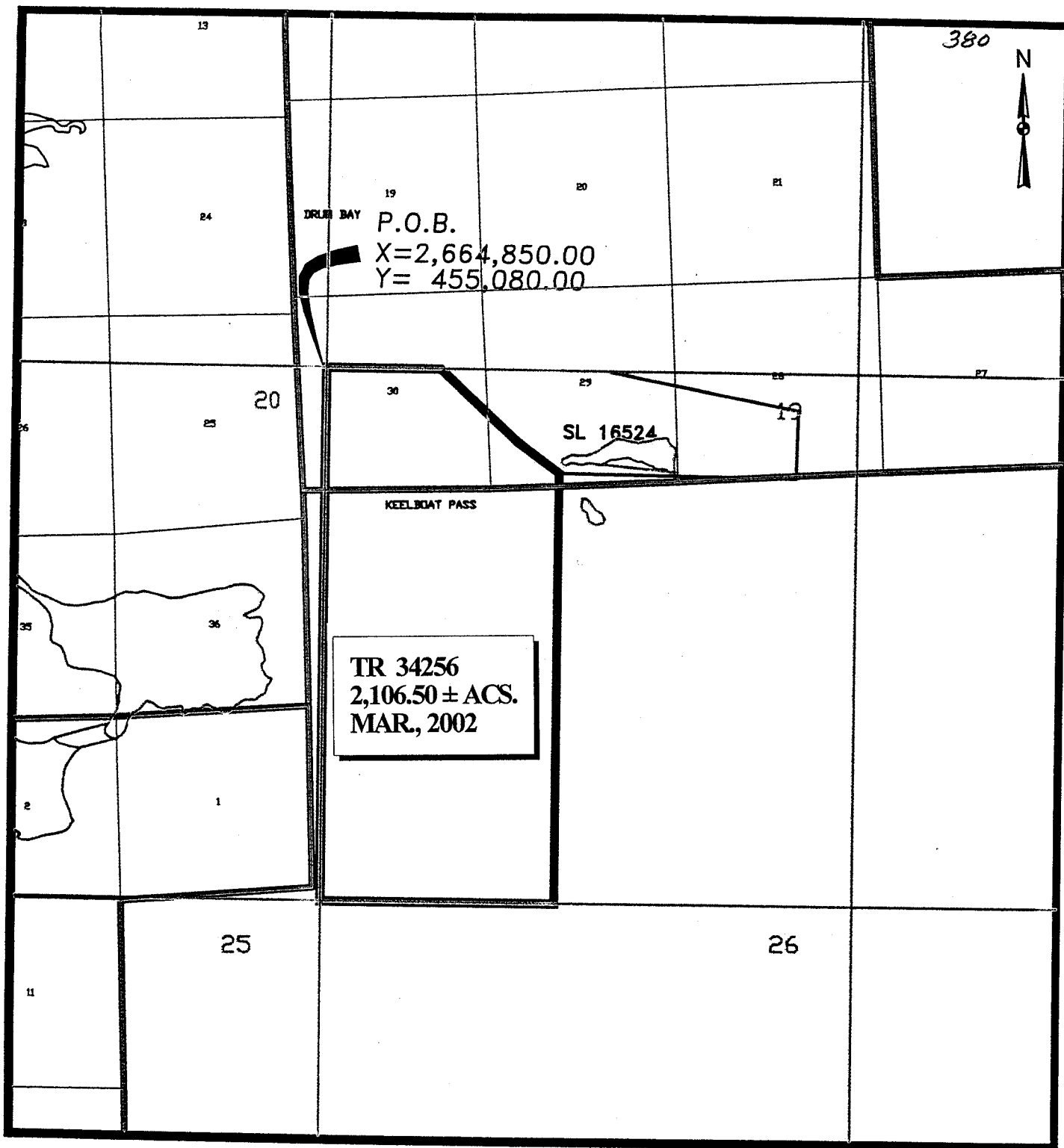
NOTE: The Office of Mineral Resources will require a minimum bonus of \$230 per acre and a minimum royalty of 23%.

NOTE: The above tract is located in or near an oyster restricted area and all operations in such area must be conducted in strict conformity with the stipulations and/or regulations of the Louisiana Department of Wildlife and Fisheries.

NOTE: The State of Louisiana does hereby reserve, and this lease shall be subject to, the imprescriptible right of surface use in the nature of a servitude in favor of the Department of Natural Resources, including its Offices and Commissions, for the sole purpose of implementing, constructing, servicing and maintaining approved coastal zone management and/or restoration projects. Utilization of any and all rights derived under this lease by the mineral lessee, its agents, successors or assigns, shall not interfere with nor hinder the reasonable surface use by the Department of Natural Resources, its Offices or Commissions, as hereinabove reserved.

Applicant: Crossroads Energy

Bidder	Cash Payment	Price / Acre	Rental	Oil	Gas	Other



CHANDELEUR SOUND AREA
ST. BERNARD PARISH, LOUISIANA

SCALE: 1" = 4000'

TRACT 34257 - PORTION OF BLOCK 19, CHANDELEUR SOUND AREA, St. Bernard Parish, Louisiana

All of the lands now or formerly constituting the beds and bottoms of all water bodies of every nature and description and all islands and other lands formed by accretion or reliction, except tax lands, belonging to the State of Louisiana and not under mineral lease on March 13, 2002, situated in St. Bernard Parish, Louisiana, and more particularly described as follows: Beginning at a point being the Northeast corner of Block 19, Chandeleur Sound Area, having Coordinates of X = 2,679,600.00 and Y = 455,080.00; thence South 14,750.00 feet to a point having Coordinates of X = 2,679,600.00 and Y = 440,330.00; thence West 8,195.16 feet to a point having Coordinates of X = 2,671,404.84 and Y = 440,330.00; thence North 11,962.01 feet to the Southwest corner of State Lease No. 16524 having Coordinates of X = 2,671,404.84 and Y = 452,292.01; thence along said State Lease No. 16524 the following courses: South 89 degrees 21 minutes 37 seconds East 6,547.32 feet, North 01 degrees 19 minutes 04 seconds East 1,852.72 feet and North 79 degrees 11 minutes 15 seconds West 5,377.83 feet to a point having Coordinates of X = 2,672,712.00 and Y = 455,080.00; thence East 6,888.00 feet to the point of beginning, containing approximately **2,409.75 acres**, as shown outlined on a plat on file in the Office of Mineral Resources, Department of Natural Resources, as provided by the applicant. All bearings, distances and coordinates are based on Louisiana Coordinate System of 1927 (South Zone).

NOTE: The above description of the tract nominated for lease has been provided exclusively by the party nominating the tract for lease. The Louisiana State Mineral Board makes no representation as to the accuracy of the description of the nominated tract or its suitability for lease. The Louisiana State Mineral Board has made no inspection of the nominated tract for the existence of conflicting leases, operating agreements, private claims or other existing or future obligations or conditions which may affect all or any portion of the nominated tract or its suitability for lease.

Maps depicting the nominated tract, containing the bearings, distances and coordinates of the nominated tract based on the Louisiana Coordinate System of 1927, North or South Zone, as applicable, are available for public inspection and review at the offices of the Louisiana State Mineral Board from 10:00 a.m. to 3:00 p.m. Monday - Friday.

In the event of conflict between the description of the nominated tract set forth above and the description of the nominated property as contained on the maps maintained at the offices of the Louisiana State Mineral Board, the Louisiana State Mineral Board maps shall prevail and shall provide the final property description of the lease to be awarded of the nominated tract.

Any mineral lease of the nominated tract by the Louisiana State Mineral Board shall be without warranty of any kind, either express, implied, or statutory, including, but not limited to, the implied warranties or merchantability and fitness for a particular purpose. Should the mineral lease of the nominated tract awarded by the Louisiana State Mineral Board be subsequently modified, cancelled or abrogated due to the existence of

conflicting leases, operating agreements, private claims or other existing of future obligations or conditions which may affect all or any portion of the leased tract, it shall not relieve the Lessee of the obligation to pay any bonus due thereon to the Louisiana State Mineral Board, nor shall the Louisiana State Mineral Board be obligated to refund any consideration paid by the Lessee prior to such modification, cancellation, or abrogation, including, but not limited to, bonuses, rents and royalties.

NOTE: The Office of Mineral Resources will require a minimum bonus of \$230 per acre and a minimum royalty of 23%.

NOTE: The above tract is located in or near an oyster restricted area and all operations in such area must be conducted in strict conformity with the stipulations and/or regulations of the Louisiana Department of Wildlife and Fisheries.

NOTE: The State of Louisiana does hereby reserve, and this lease shall be subject to, the imprescriptible right of surface use in the nature of a servitude in favor of the Department of Natural Resources, including its Offices and Commissions, for the sole purpose of implementing, constructing, servicing and maintaining approved coastal zone management and/or restoration projects. Utilization of any and all rights derived under this lease by the mineral lessee, its agents, successors or assigns, shall not interfere with nor hinder the reasonable surface use by the Department of Natural Resources, its Offices or Commissions, as hereinabove reserved.

Applicant: Crossroads Energy

Bidder	Cash Payment	Price / Acre	Rental	Oil	Gas	Other

383

P. O. B.
X=2,679,600.00
Y= 455,080.00

SL 16524

Bik. 19

Bik. 18

TR 34257
2,409.75 ± ACS.
MAR., 2002

CHANDELEUR SOUND AREA

NAD 27 LAMBERT L.A. SOUTH ZONE

St. Bernard Parish, Louisiana

2000' 0' 2000'