

Maps depicting the nominated tract, containing the bearings, distances and coordinates of the nominated tract based on the Louisiana Coordinate System of 1927, North or South Zone, as applicable, are available for public inspection and review at the offices of the Louisiana State Mineral Board from 10:00 a.m. to 3:00 p.m. Monday - Friday.

In the event of conflict between the description of the nominated tract set forth above and the description of the nominated property as contained on the maps maintained at the offices of the Louisiana State Mineral Board, the Louisiana State Mineral Board maps shall prevail and shall provide the final property description of the lease to be awarded of the nominated tract.

Any mineral lease of the nominated tract by the Louisiana State Mineral Board shall be without warranty of any kind, either express, implied, or statutory, including, but not limited to, the implied warranties or merchantability and fitness for a particular purpose. Should the mineral lease of the nominated tract awarded by the Louisiana State Mineral Board be subsequently modified, cancelled or abrogated due to the existence of conflicting leases, operating agreements, private claims or other existing of future obligations or conditions which may affect all or any portion of the leased tract, it shall not relieve the Lessee of the obligation to pay any bonus due thereon to the Louisiana State Mineral Board, nor shall the Louisiana State Mineral Board be obligated to refund any consideration paid by the Lessee prior to such modification, cancellation, or abrogation, including, but not limited to, bonuses, rents and royalties.

NOTE: The State of Louisiana does hereby reserve, and this lease shall be subject to, the imprescriptible right of surface use in the nature of a servitude in favor of the Department of Natural Resources, including its Offices and Commissions, for the sole purpose of implementing, constructing, servicing and maintaining approved coastal zone management and/or restoration projects. Utilization of any and all rights derived under this lease by the mineral lessee, its agents, successors or assigns, shall not interfere with nor hinder the reasonable surface use by the Department of Natural Resources, its Offices or Commissions, as hereinabove reserved.

Applicant: Robert A. Schroeder, Inc.

Bidder	Cash Payment	Price / Acre	Rental	Oil	Gas	Other

BLOCK 21

BLK 32

X = 2,627,975  
Y = 322,330

191  
X = 2,635,350  
Y = 322,330

EAST

7375'

SL 16935

NORTH

4806.22'

MAIN PASS AREA, REVISED

X = 2,627,975.00  
Y = 317,523.78

X = 2,628,710.00  
Y = 317,523.78

735'

SL 15985

WEST

TR 34193  
2,039.36 ± ACS.  
MAR., 2002

Kerr McGee Corp.  
SL 12114

Humble  
SL 4456

NORTH

2568.78'

SL 15985

SL 15827

X = 2,628,710  
Y = 314,955

SL 15127

SOUTH  
14750'

BRETON SOUND AREA  
BLOCK 33  
SOUND

N57°13'03"E  
874.24'

X = 2,627,975.00  
Y = 314,481.64

BRETON

NORTH

3178.17'

X = 2,627,975  
Y = 311,303.47

X = 2,628,920  
Y = 311,626

S71°09'18"W  
998.52'

BLOCK 26

SL 16937

N13°13'42"N  
4156.28'

SL 16936

Conoco  
SL 14899  
1Ø

P.O.B  
X = 2,635,350.00  
Y = 307,580.00

X = 2,629,871.08  
Y = 307,580

5478.92'

BLOCK 31

WEST

BLK 48

LOCATED IN  
BLOCK 26  
MAIN PASS AREA, REVISED  
PLAQUEMINES PARISH, LOUISIANA  
SCALE 1" = 2000'



3000' 0' 3000' 6000'



SCALE

**TRACT 34194 - PORTION OF BLOCK 33, BRETON SOUND AREA, Plaquemines Parish, Louisiana**

All of the lands now or formerly constituting the beds and bottoms of all water bodies of every nature and description and all islands and other lands formed by accretion or reliction, except tax lands, belonging to the State of Louisiana and not under mineral lease on March 13, 2002, situated in Plaquemines Parish, Louisiana, and more particularly described as follows: Beginning at a point having Coordinates of X = 2,635,350.00 and Y = 322,330.00, said point also being the Northwest corner of Block 33, Breton Sound Area; thence East 7,375.00 feet on and along the North line of said Block 33 to a point having Coordinates of X = 2,642,725.00 and Y = 322,330.00; thence South 14,750.00 feet to a point having Coordinates of X = 2,642,725.00 and Y = 307,580.00, said point also being on the South line of said Block 33; thence West 7,375.00 feet on and along the said South line of said Block 33 to a point having Coordinates of X = 2,635,350.00 and Y = 307,580.00, said point also being the Southwest corner of said Block 33; thence North 14,750.00 feet on and along the West line of said Block 33 to the point of beginning, containing approximately **2,497.27 acres**, as shown outlined on a plat on file in the Office of Mineral Resources, Department of Natural Resources, as provided by the applicant. All bearings, distances and coordinates are based on Louisiana Coordinate System of 1927 (South Zone).

NOTE: The above description of the tract nominated for lease has been provided exclusively by the party nominating the tract for lease. The Louisiana State Mineral Board makes no representation as to the accuracy of the description of the nominated tract or its suitability for lease. The Louisiana State Mineral Board has made no inspection of the nominated tract for the existence of conflicting leases, operating agreements, private claims or other existing or future obligations or conditions which may affect all or any portion of the nominated tract or its suitability for lease.

Maps depicting the nominated tract, containing the bearings, distances and coordinates of the nominated tract based on the Louisiana Coordinate System of 1927, North or South Zone, as applicable, are available for public inspection and review at the offices of the Louisiana State Mineral Board from 10:00 a.m. to 3:00 p.m. Monday - Friday.

In the event of conflict between the description of the nominated tract set forth above and the description of the nominated property as contained on the maps maintained at the offices of the Louisiana State Mineral Board, the Louisiana State Mineral Board maps shall prevail and shall provide the final property description of the lease to be awarded of the nominated tract.

Any mineral lease of the nominated tract by the Louisiana State Mineral Board shall be without warranty of any kind, either express, implied, or statutory, including, but not limited to, the implied warranties or merchantability and fitness for a particular purpose. Should the mineral lease of the nominated tract awarded by the Louisiana State Mineral Board be subsequently modified, cancelled or abrogated due to the existence of conflicting leases, operating agreements, private claims or other existing

of future obligations or conditions which may affect all or any portion of the leased tract, it shall not relieve the Lessee of the obligation to pay any bonus due thereon to the Louisiana State Mineral Board, nor shall the Louisiana State Mineral Board be obligated to refund any consideration paid by the Lessee prior to such modification, cancellation, or abrogation, including, but not limited to, bonuses, rents and royalties.

NOTE: The State of Louisiana does hereby reserve, and this lease shall be subject to, the imprescriptible right of surface use in the nature of a servitude in favor of the Department of Natural Resources, including its Offices and Commissions, for the sole purpose of implementing, constructing, servicing and maintaining approved coastal zone management and/or restoration projects. Utilization of any and all rights derived under this lease by the mineral lessee, its agents, successors or assigns, shall not interfere with nor hinder the reasonable surface use by the Department of Natural Resources, its Offices or Commissions, as hereinabove reserved.

Applicant: Robert A. Schroeder, Inc.

Bidder	Cash Payment	Price / Acre	Rental	Oil	Gas	Other

BLOCK 32

EAST  
7375'

X = 2,642,725  
Y = 322,330

194

BRETON SOUND

P.O.B  
X = 2,635,350.00  
Y = 322,330.00

Conoco, Inc.  
Sl 1490  
1  
Ø

SL 16298

Placid  
Sl 5552  
1  
\*

TR 34194  
2,497.27 ± ACS.  
MAR., 2002

SOUTH  
14750'

NORTH  
14750'

BLOCK 33  
BRETON SOUND AREA

SL 16795

X = 2,635,350  
Y = 307,580

X = 2,642,725  
Y = 307,580

WEST  
7375'

BLOCK 48

MAIN PASS AREA REVISED

BLOCK 26

31

BLOCK 34

47



LOCATED IN  
BLOCK 33  
BRETON SOUND AREA  
PLAQUEMINES PARISH, LOUISIANA  
SCALE 1" = 2000'



SCALE

**TRACT 34195 - PORTION OF BLOCK 66, CHANDELEUR SOUND AREA, ADDITION, REVISED, St. Bernard Parish, Louisiana**

All of the lands now or formerly constituting the beds and bottoms of all water bodies of every nature and description and all islands and other lands formed by accretion or reliction, except tax lands, belonging to the State of Louisiana and not under mineral lease on March 13, 2002, situated in St. Bernard Parish, Louisiana, and more particularly described as follows: Beginning at a point being the Southeast corner of Block 66, Chandeleur Sound Area Addition, having Coordinates of X = 2,709,100.00 and Y = 543,580.00; thence West 14,750.00 feet to the Southwest corner of Block 66 to a point having Coordinates of X = 2,694,350.00 and Y = 543,580.00; thence North 7,375.00 feet to a point having Coordinates of X = 2,694,350.00 and Y = 550,955.00; thence East 14,750.00 feet to a point having Coordinates of X = 2,709,100.00 and Y = 550,955.00; thence South 7,375.00 feet to the point of beginning, containing approximately 2,497.27 acres, as shown outlined on a plat on file in the Office of Mineral Resources, Department of Natural Resources, as provided by the applicant. All bearings, distances and coordinates are based on Louisiana Coordinate System of 1927 (South Zone).

NOTE: The above description of the tract nominated for lease has been provided exclusively by the party nominating the tract for lease. The Louisiana State Mineral Board makes no representation as to the accuracy of the description of the nominated tract or its suitability for lease. The Louisiana State Mineral Board has made no inspection of the nominated tract for the existence of conflicting leases, operating agreements, private claims or other existing or future obligations or conditions which may affect all or any portion of the nominated tract or its suitability for lease.

Maps depicting the nominated tract, containing the bearings, distances and coordinates of the nominated tract based on the Louisiana Coordinate System of 1927, North or South Zone, as applicable, are available for public inspection and review at the offices of the Louisiana State Mineral Board from 10:00 a.m. to 3:00 p.m. Monday - Friday.

In the event of conflict between the description of the nominated tract set forth above and the description of the nominated property as contained on the maps maintained at the offices of the Louisiana State Mineral Board, the Louisiana State Mineral Board maps shall prevail and shall provide the final property description of the lease to be awarded of the nominated tract.

Any mineral lease of the nominated tract by the Louisiana State Mineral Board shall be without warranty of any kind, either express, implied, or statutory, including, but not limited to, the implied warranties or merchantability and fitness for a particular purpose. Should the mineral lease of the nominated tract awarded by the Louisiana State Mineral Board be subsequently modified, cancelled or abrogated due to the existence of conflicting leases, operating agreements, private claims or other existing of future obligations or conditions which may affect all or any portion of the leased tract, it shall not relieve the Lessee of the obligation to pay any bonus due thereon to the Louisiana State Mineral Board, nor shall the

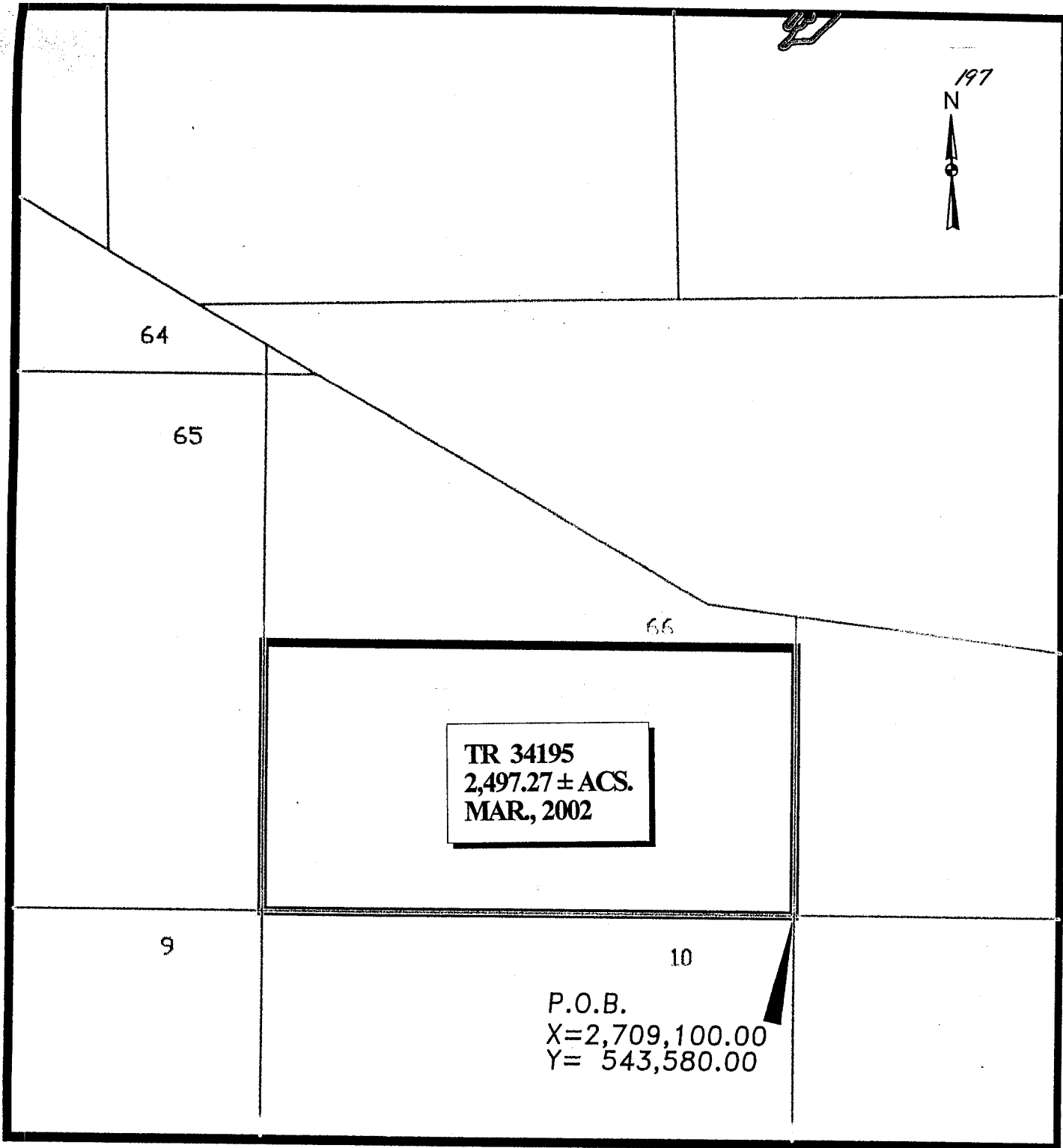
Louisiana State Mineral Board be obligated to refund any consideration paid by the Lessee prior to such modification, cancellation, or abrogation, including, but not limited to, bonuses, rents and royalties.

NOTE: The Office of Mineral Resources will require a minimum bonus of \$130 per acre and a minimum royalty of 21%.

NOTE: The State of Louisiana does hereby reserve, and this lease shall be subject to, the imprescriptible right of surface use in the nature of a servitude in favor of the Department of Natural Resources, including its Offices and Commissions, for the sole purpose of implementing, constructing, servicing and maintaining approved coastal zone management and/or restoration projects. Utilization of any and all rights derived under this lease by the mineral lessee, its agents, successors or assigns, shall not interfere with nor hinder the reasonable surface use by the Department of Natural Resources, its Offices or Commissions, as hereinabove reserved.

Applicant: Crossroads Energy

Bidder	Cash Payment	Price / Acre	Rental	Oil	Gas	Other



TR 34195  
2,497.27 ± ACS.  
MAR, 2002

P.O.B.  
X=2,709,100.00  
Y= 543,580.00

CHANDELEUR SOUND AREA ADDITION, REVISED  
ST. BERNARD PARISH, LOUISIANA

SCALE: 1" = 4000'