

**TRACT 34188 - PORTION OF BLOCK 83, WEST DELTA AREA, Plaquemines Parish, Louisiana**

All of the lands now or formerly constituting the beds and bottoms of all water bodies of every nature and description and all islands and other lands formed by accretion or reliction, except tax lands, belonging to the State of Louisiana and not under mineral lease on March 13, 2002, situated in Plaquemines Parish, Louisiana, and more particularly described as follows: Beginning at the Northwest corner of said Block 83 having Coordinates of X = 2,615,927.93 and Y = 123,834.20; thence East approximately 9,061.00 feet along the North line of said Block 83 to the Northwest corner of State Lease 2593, as amended; thence South and Southeast along the West boundary of said State Lease 2593 to its intersection with State Lease 2227, as amended; thence Southwesterly along the Western boundary of said State Lease 2227 to its intersection with State Lease 2565; thence Southwesterly along the boundary of said State Lease 2565 to a point of intersection with the West line of said Block 83; thence North approximately 8,415.00 feet along the West line of said Block 83 to the point of beginning, **LESS AND EXCEPT** any portion of State Lease No. 2593, as amended, State Lease No. 2227, as amended, and State Lease No. 2565 that may lie within the above described tract, containing approximately **595.56 acres**, as shown outlined on a plat on file in the Office of Mineral Resources, Department of Natural Resources. All bearings, distances and coordinates are based on Louisiana Coordinate System of 1927 (South Zone).

NOTE: The above description of the tract nominated for lease has been provided exclusively by the party nominating the tract for lease. The Louisiana State Mineral Board makes no representation as to the accuracy of the description of the nominated tract or its suitability for lease. The Louisiana State Mineral Board has made no inspection of the nominated tract for the existence of conflicting leases, operating agreements, private claims or other existing or future obligations or conditions which may affect all or any portion of the nominated tract or its suitability for lease.

Maps depicting the nominated tract, containing the bearings, distances and coordinates of the nominated tract based on the Louisiana Coordinate System of 1927, North or South Zone, as applicable, are available for public inspection and review at the offices of the Louisiana State Mineral Board from 10:00 a.m. to 3:00 p.m. Monday - Friday.

In the event of conflict between the description of the nominated tract set forth above and the description of the nominated property as contained on the maps maintained at the offices of the Louisiana State Mineral Board, the Louisiana State Mineral Board maps shall prevail and shall provide the final property description of the lease to be awarded of the nominated tract.

Any mineral lease of the nominated tract by the Louisiana State Mineral Board shall be without warranty of any kind, either express, implied, or statutory, including, but not limited to, the implied warranties or merchantability and fitness for a particular purpose. Should the mineral lease of the nominated tract awarded by the Louisiana State Mineral Board

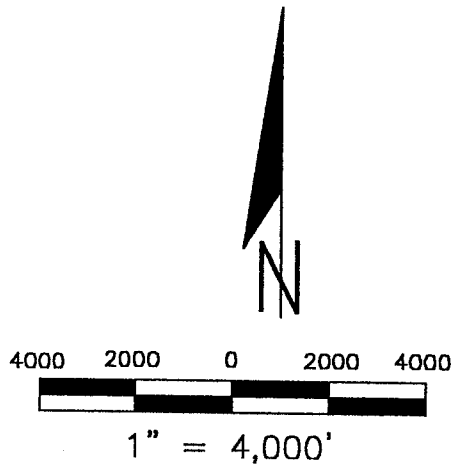
be subsequently modified, cancelled or abrogated due to the existence of conflicting leases, operating agreements, private claims or other existing of future obligations or conditions which may affect all or any portion of the leased tract, it shall not relieve the Lessee of the obligation to pay any bonus due thereon to the Louisiana State Mineral Board, nor shall the Louisiana State Mineral Board be obligated to refund any consideration paid by the Lessee prior to such modification, cancellation, or abrogation, including, but not limited to, bonuses, rents and royalties.

NOTE: The above tract is located in or near an oyster restricted area and all operations in such area must be conducted in strict conformity with the stipulations and/or regulations of the Louisiana Department of Wildlife and Fisheries.

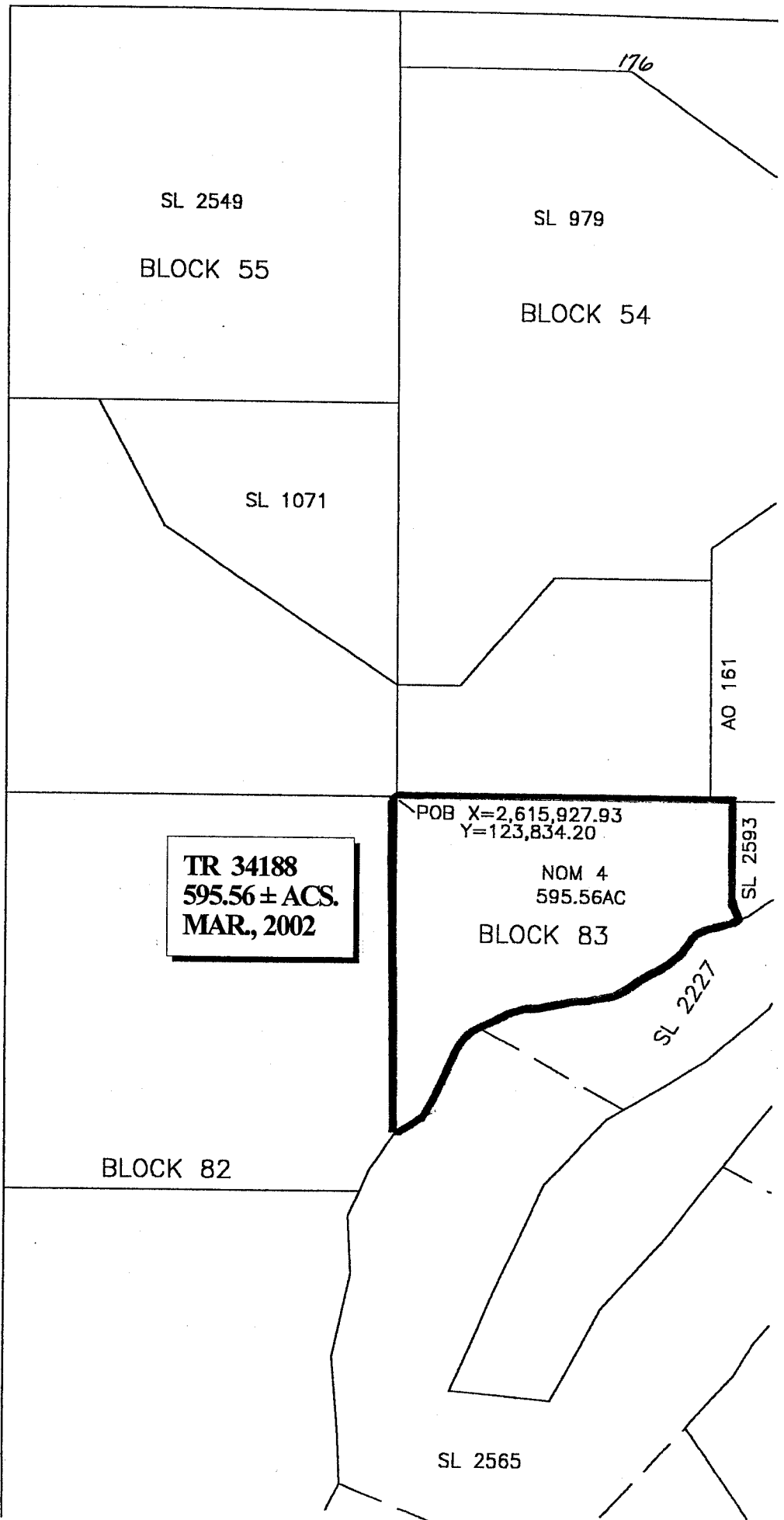
NOTE: The State of Louisiana does hereby reserve, and this lease shall be subject to, the imprescriptible right of surface use in the nature of a servitude in favor of the Department of Natural Resources, including its Offices and Commissions, for the sole purpose of implementing, constructing, servicing and maintaining approved coastal zone management and/or restoration projects. Utilization of any and all rights derived under this lease by the mineral lessee, its agents, successors or assigns, shall not interfere with nor hinder the reasonable surface use by the Department of Natural Resources, its Offices or Commissions, as hereinabove reserved.

Applicant: Leslie L. Moore

Bidder	Cash Payment	Price / Acre	Rental	Oil	Gas	Other



**WEST DELTA/SOUTH PASS AREA**  
Plaquemines Parish, Louisiana



SL 2549  
BLOCK 55

SL 979  
BLOCK 54

SL 1071

AO 161

POB X=2,615,927.93  
Y=123,834.20

**TR 34188**  
**595.56 ± ACS.**  
**MAR., 2002**

NOM 4  
595.56AC  
BLOCK 83

SL 2593

SL 2227

BLOCK 82

SL 2565

**TRACT 34189 - PORTION OF BLOCK 41, SOUTH PASS AREA, Plaquemines Parish, Louisiana**

All of the lands now or formerly constituting the beds and bottoms of all water bodies of every nature and description and all islands and other lands formed by accretion or reliction, except tax lands, belonging to the State of Louisiana and not under mineral lease on March 13, 2002, situated in Plaquemines Parish, Louisiana, and more particularly described as follows: Beginning at the a point on the South line of State Lease 17193 and a point on the shoreline having Coordinates of X = 2,612,822.55 and Y = 95,342.10; thence West 3,844.62 feet along the South line of said State Lease 17193 to its Southwest corner having Coordinates of X = 2,608,977.93 and Y = 95,342.10; thence North along the West line of said State Lease 17193 to a point of intersection with the shoreline having Coordinates of X = 2,608,977.93 and Y = 96,306.68; thence along the shoreline the following courses: Southwest on a straight line to a point having Coordinates of X = 2,608,665.00 and Y = 95,870.00, Southwest on a straight line to a point having Coordinates of X = 2,607,455.00 and Y = 93,710.00, Southwest on a straight line to a point having Coordinates of X = 2,607,400.00 and Y = 93,175.00, Southwest on a straight line to a point having Coordinates of X = 2,607,290.00 and Y = 93,040.00, Southeast on a straight line to a point having Coordinates of X = 2,609,180.00 and Y = 91,445.00, Northeast on a straight line to a point having Coordinates of X = 2,609,785.00 and Y = 91,750.00, thence Northeast on a straight line to a point having Coordinates of X = 2,610,160.00 and Y = 92,050.00, Northeast on a straight line to a point having Coordinates of X = 2,611,843.00 and Y = 94,130.00 and Northeast to a point of intersection with the south line of said State Lease 17193 being the point of beginning, containing approximately **298.75 acres**, as shown outlined on a plat on file in the Office of Mineral Resources, Department of Natural Resources, as provided by the applicant. All bearings, distances and coordinates are based on Louisiana Coordinate System of 1927 (South Zone).

NOTE: The above description of the tract nominated for lease has been provided exclusively by the party nominating the tract for lease. The Louisiana State Mineral Board makes no representation as to the accuracy of the description of the nominated tract or its suitability for lease. The Louisiana State Mineral Board has made no inspection of the nominated tract for the existence of conflicting leases, operating agreements, private claims or other existing or future obligations or conditions which may affect all or any portion of the nominated tract or its suitability for lease.

Maps depicting the nominated tract, containing the bearings, distances and coordinates of the nominated tract based on the Louisiana Coordinate System of 1927, North or South Zone, as applicable, are available for public inspection and review at the offices of the Louisiana State Mineral Board from 10:00 a.m. to 3:00 p.m. Monday - Friday.

In the event of conflict between the description of the nominated tract set forth above and the description of the nominated property as contained on the maps maintained at the offices of the Louisiana State Mineral Board, the Louisiana State Mineral Board maps shall prevail and shall

provide the final property description of the lease to be awarded of the nominated tract.

Any mineral lease of the nominated tract by the Louisiana State Mineral Board shall be without warranty of any kind, either express, implied, or statutory, including, but not limited to, the implied warranties or merchantability and fitness for a particular purpose. Should the mineral lease of the nominated tract awarded by the Louisiana State Mineral Board be subsequently modified, cancelled or abrogated due to the existence of conflicting leases, operating agreements, private claims or other existing of future obligations or conditions which may affect all or any portion of the leased tract, it shall not relieve the Lessee of the obligation to pay any bonus due thereon to the Louisiana State Mineral Board, nor shall the Louisiana State Mineral Board be obligated to refund any consideration paid by the Lessee prior to such modification, cancellation, or abrogation, including, but not limited to, bonuses, rents and royalties.

NOTE: The above tract is located in or near an oyster restricted area and all operations in such area must be conducted in strict conformity with the stipulations and/or regulations of the Louisiana Department of Wildlife and Fisheries.

NOTE: It appears, according to our records, that a portion of this tract is located within the restrictive safety fairway area as set out by the Corps of Engineers, U.S. Army.

NOTE: The State of Louisiana does hereby reserve, and this lease shall be subject to, the imprescriptible right of surface use in the nature of a servitude in favor of the Department of Natural Resources, including its Offices and Commissions, for the sole purpose of implementing, constructing, servicing and maintaining approved coastal zone management and/or restoration projects. Utilization of any and all rights derived under this lease by the mineral lessee, its agents, successors or assigns, shall not interfere with nor hinder the reasonable surface use by the Department of Natural Resources, its Offices or Commissions, as hereinabove reserved.

Applicant: Leslie L. Moore

Bidder	Cash Payment	Price / Acre	Rental	Oil	Gas	Other

179

SL

2000 1000 0 1000 2000



1" = 2,000'



WEST DELTA/SOUTH PASS AREA  
Plaquemines Parish, Louisiana

SL 17193

AO 232

TR 34189  
298.75 ± ACS.  
MAR., 2002

P.O.B.  
X= 2,612,822.5  
Y= 95,342.10

BLOCK 84

BLOCK 41

SL 12729

**TRACT 34190 - Plaquemines Parish, Louisiana**

All of the lands now or formerly constituting the beds and bottoms of all water bodies of every nature and description and all islands and other lands formed by accretion or reliction, except tax lands, owned by and not under mineral lease from the State of Louisiana on March 13, 2002, situated in Plaquemines Parish, Louisiana, within the following described boundaries: Beginning at a point on the East line of State Lease No. 15918, as amended, having Coordinates of X = 2,631,065.40 and Y = 198,122.69; thence North 88 degrees 17 minutes 07 seconds East 2,640.00 feet to a point having Coordinates of X = 2,633,704.22 and Y = 198,201.69; thence South 01 degrees 42 minutes 53 seconds East 5,280.00 feet to a point having Coordinates of X = 2,633,862.21 and Y = 192,924.05; thence South 88 degrees 17 minutes 07 seconds West 2,640.00 feet to a point having Coordinates of X = 2,631,223.39 and Y = 192,845.06; thence North 01 degrees 42 minutes 53 seconds West 1,319.99 feet to the Southeast corner of said State Lease No. 15918 having Coordinates of X = 2,631,183.89 and Y = 194,164.45; thence North 01 degrees 42 minutes 53 seconds West 3,960.01 on the East line of said State Lease No. 15918 to the point of beginning, containing approximately **318 acres**, as shown outlined on a plat on file in the Office of Mineral Resources, Department of Natural Resources, as provided by the applicant. All bearings, distances and coordinates are based on Louisiana Coordinate System of 1927 (South Zone).

NOTE: The above description of the tract nominated for lease has been provided exclusively by the party nominating the tract for lease. The Louisiana State Mineral Board makes no representation as to the accuracy of the description of the nominated tract or its suitability for lease. The Louisiana State Mineral Board has made no inspection of the nominated tract for the existence of conflicting leases, operating agreements, private claims or other existing or future obligations or conditions which may affect all or any portion of the nominated tract or its suitability for lease.

Maps depicting the nominated tract, containing the bearings, distances and coordinates of the nominated tract based on the Louisiana Coordinate System of 1927, North or South Zone, as applicable, are available for public inspection and review at the offices of the Louisiana State Mineral Board from 10:00 a.m. to 3:00 p.m. Monday - Friday.

In the event of conflict between the description of the nominated tract set forth above and the description of the nominated property as contained on the maps maintained at the offices of the Louisiana State Mineral Board, the Louisiana State Mineral Board maps shall prevail and shall provide the final property description of the lease to be awarded of the nominated tract.

Any mineral lease of the nominated tract by the Louisiana State Mineral Board shall be without warranty of any kind, either express, implied, or statutory, including, but not limited to, the implied warranties or merchantability and fitness for a particular purpose. Should the mineral lease of the nominated tract awarded by the Louisiana State Mineral Board be subsequently modified, cancelled or abrogated due to the existence of conflicting leases, operating agreements, private claims or other existing

of future obligations or conditions which may affect all or any portion of the leased tract, it shall not relieve the Lessee of the obligation to pay any bonus due thereon to the Louisiana State Mineral Board, nor shall the Louisiana State Mineral Board be obligated to refund any consideration paid by the Lessee prior to such modification, cancellation, or abrogation, including, but not limited to, bonuses, rents and royalties.

NOTE: The above tract is located in or near an oyster restricted area and all operations in such area must be conducted in strict conformity with the stipulations and/or regulations of the Louisiana Department of Wildlife and Fisheries.

NOTE: The State of Louisiana does hereby reserve, and this lease shall be subject to, the imprescriptible right of surface use in the nature of a servitude in favor of the Department of Natural Resources, including its Offices and Commissions, for the sole purpose of implementing, constructing, servicing and maintaining approved coastal zone management and/or restoration projects. Utilization of any and all rights derived under this lease by the mineral lessee, its agents, successors or assigns, shall not interfere with nor hinder the reasonable surface use by the Department of Natural Resources, its Offices or Commissions, as hereinabove reserved.

Applicant: Ridgelake Energy, Inc.

Bidder	Cash Payment	Price / Acre	Rental	Oil	Gas	Other