

TRACT 45275 - Portion of Block 49, Breton Sound Area, Blocks 36, 48, and 49, Main Pass Area, Revised, Plaquemines Parish, Louisiana

All of the lands now or formerly constituting the beds and bottoms of all water bodies of every nature and description as to which title is vested in the State of Louisiana, together with all islands arising therein and other lands formed by accretion or by reliction, where allowed by law, excepting tax adjudicated lands, and not presently under mineral lease on February 12, 2020, situated in Plaquemines Parish, Louisiana, and more particularly described as follows: Beginning at a point having Coordinates of X = 2,632,588.00 and Y = 269,874.00, said point being in Block 49, Main Pass Area, Revised; Thence North 8,750.00 feet to a point having Coordinates of X = 2,632,588.00 and Y = 278,624.00, said point being in Block 36, Main Pass Area, Revised; Thence East 11,920.00 feet to a point having Coordinates of X = 2,644,508.00 and Y = 278,624.00, said point being in Block 49, Main Pass Area, Revised; Thence South 8,750.00 feet to a point having Coordinates of X = 2,644,508.00 and Y = 269,874.00, said point being in Block 48, Main Pass Area, Revised; Thence West 11,920.00 feet to the Point of Beginning, containing approximately **2,394.40 acres**, all as more particularly outlined on a plat on file in the Office of Mineral Resources, Department of Natural Resources. All bearings, distances and coordinates are based on Louisiana Coordinate System of 1927, (North or South Zone), where applicable.

NOTE: The above description of the Tract nominated for lease has been provided and corrected, where required, exclusively by the nomination party. Any mineral lease selected from this Tract and awarded by the Louisiana State Mineral and Energy Board shall be without warranty of any kind, either express, implied, or statutory, including, but not limited to, the implied warranties of merchantability and fitness for a particular purpose. Should the mineral lease awarded by the Louisiana State Mineral and Energy Board be subsequently modified, cancelled or abrogated due to the existence of conflicting leases, operating agreements, private claims or other future obligations or conditions which may affect all or any portion of the leased Tract, it shall not relieve the Lessee of the obligation to pay any bonus due thereon to the Louisiana State Mineral and Energy Board, nor shall the Louisiana State Mineral and Energy Board be obligated to refund any consideration paid by the Lessor prior to such modification, cancellation, or abrogation, including, but not limited to, bonuses, rentals and royalties.

NOTE: The State of Louisiana does hereby reserve, and this lease shall be subject to, the imprescriptible right of surface use in the nature of a servitude in favor of the Department of Natural Resources, including its Offices and Commissions, for the sole purpose of implementing, constructing, servicing and maintaining approved coastal zone management and/or restoration projects. Utilization of any and all rights derived under this lease by the mineral lessee, its agents, successors or assigns, shall not interfere with nor hinder the reasonable surface use by the Department of Natural Resources, its Offices or Commissions, as herein above reserved.

NOTE: This tract is located in an area designated by the Louisiana Legislature or the Wildlife and Fisheries Commission as a Public Oyster Seed Ground, Reservation, or area of Calcasieu or Sabine Lake. Proposed projects occurring in these areas will be evaluated on a case by case basis by Louisiana Department of Wildlife & Fisheries. Modifications to proposed project features including, but not limited to, access routes, well sites, flowlines, and appurtenant structures maybe required by the Louisiana Department of Wildlife and Fisheries. In addition, compensatory mitigation will be required to offset unavoidable habitat impacts.

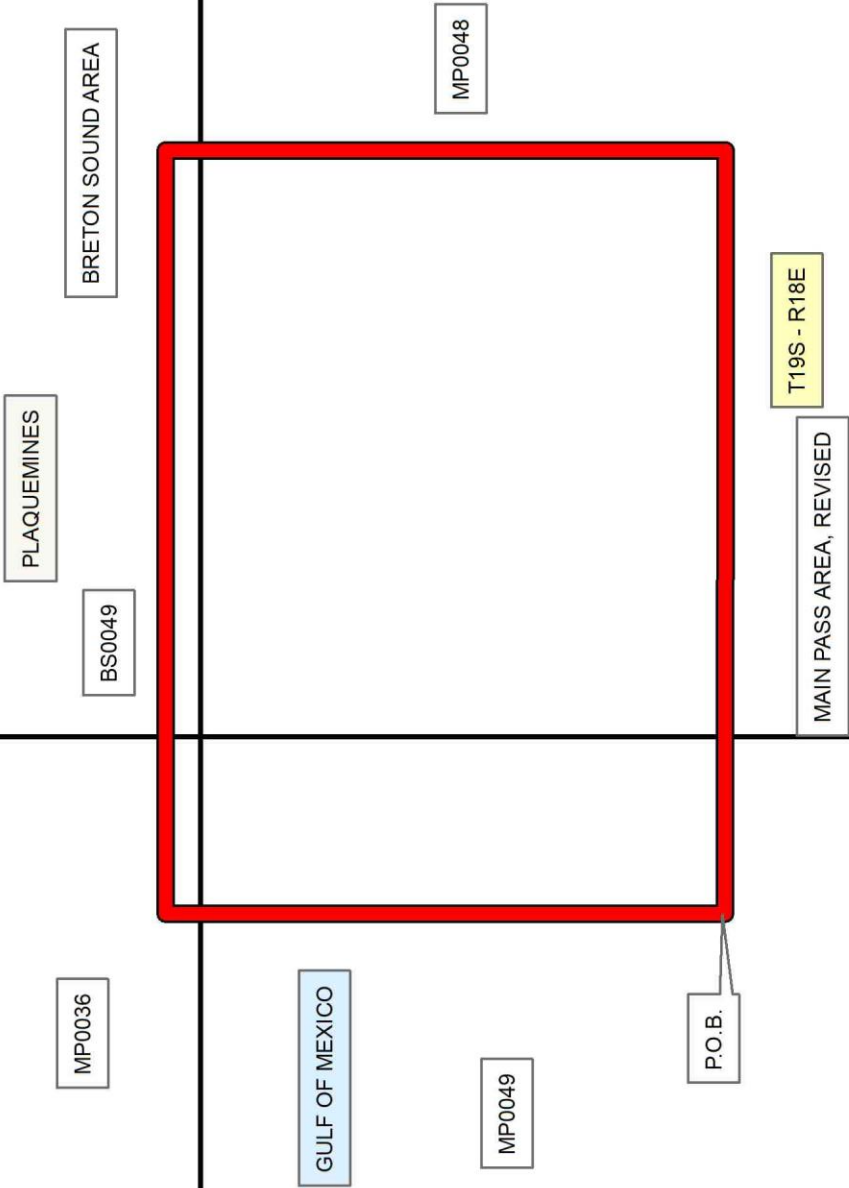
Applicant: ROBERT A. SCHROEDER, INC.

Bidder	Cash Payment	Price/ Acre	Rental	Oil	Gas	Other

Legend

20020007

Blocks



TRACT 45276 - Portion of Blocks 113, and 114, South Timbalier Area, Revised, Terrebonne Parish, Louisiana

All of the lands now or formerly constituting the beds and bottoms of all water bodies of every nature and description as to which title is vested in the State of Louisiana, together with all islands arising therein and other lands formed by accretion or by reliction, where allowed by law, excepting tax adjudicated lands, and not presently under mineral lease on February 12, 2020, situated in Terrebonne Parish, Louisiana, and more particularly described as follows: Beginning at a point having Coordinates of X = 2,225,658.20 and Y = 184,160.33, said point being on the Eastern boundary of State Lease No. 199, as amended; thence along said Eastern boundary of said State Lease No. 199, the following courses and distances: North 00 degrees 20 minutes 05 seconds West 4,921.03 feet to a point having Coordinates of X = 2,225,629.46 and Y = 189,081.28, South 89 degrees 39 minutes 55 seconds West 5,280.00 feet to a point having Coordinates of X = 2,220,349.55 and Y = 189,050.43, and North 00 degrees 20 minutes 05 seconds West 5,280.00 feet to a point having Coordinates of X = 2,220,318.70 and Y = 194,330.34; thence North 89 degrees 39 minutes 55 seconds East 10,419.87 feet to a point having Coordinates of X = 2,230,738.39 and Y = 194,391.22; thence South 00 degrees 20 minutes 05 seconds East 10,201.04 feet to a point having Coordinates of X = 2,230,797.98 and Y = 184,190.36; thence South 89 degrees 39 minutes 55 seconds West 5,139.87 feet to the point of beginning, containing approximately **1,805 acres**, all as more particularly outlined on a plat on file in the Office of Mineral Resources, Department of Natural Resources. All bearings, distances and coordinates are based on Louisiana Coordinate System of 1927, (North or South Zone), where applicable.

NOTE: The above description of the Tract nominated for lease has been provided and corrected, where required, exclusively by the nomination party. Any mineral lease selected from this Tract and awarded by the Louisiana State Mineral and Energy Board shall be without warranty of any kind, either express, implied, or statutory, including, but not limited to, the implied warranties of merchantability and fitness for a particular purpose. Should the mineral lease awarded by the Louisiana State Mineral and Energy Board be subsequently modified, cancelled or abrogated due to the existence of conflicting leases, operating agreements, private claims or other future obligations or conditions which may affect all or any portion of the leased Tract, it shall not relieve the Lessee of the obligation to pay any bonus due thereon to the Louisiana State Mineral and Energy Board, nor shall the Louisiana State Mineral and Energy Board be obligated to refund any consideration paid by the Lessor prior to such modification, cancellation, or abrogation, including, but not limited to, bonuses, rentals and royalties.

NOTE: The State of Louisiana does hereby reserve, and this lease shall be subject to, the imprescriptible right of surface use in the nature of a servitude in favor of the Department of Natural Resources, including its Offices and Commissions, for the sole purpose of implementing, constructing, servicing and maintaining approved coastal zone management and/or restoration projects. Utilization of any and all rights derived under this

lease by the mineral lessee, its agents, successors or assigns, shall not interfere with nor hinder the reasonable surface use by the Department of Natural Resources, its Offices or Commissions, as herein above reserved.

Applicant: THEOPHILUS OIL, GAS & LAND SERVICES, LLC

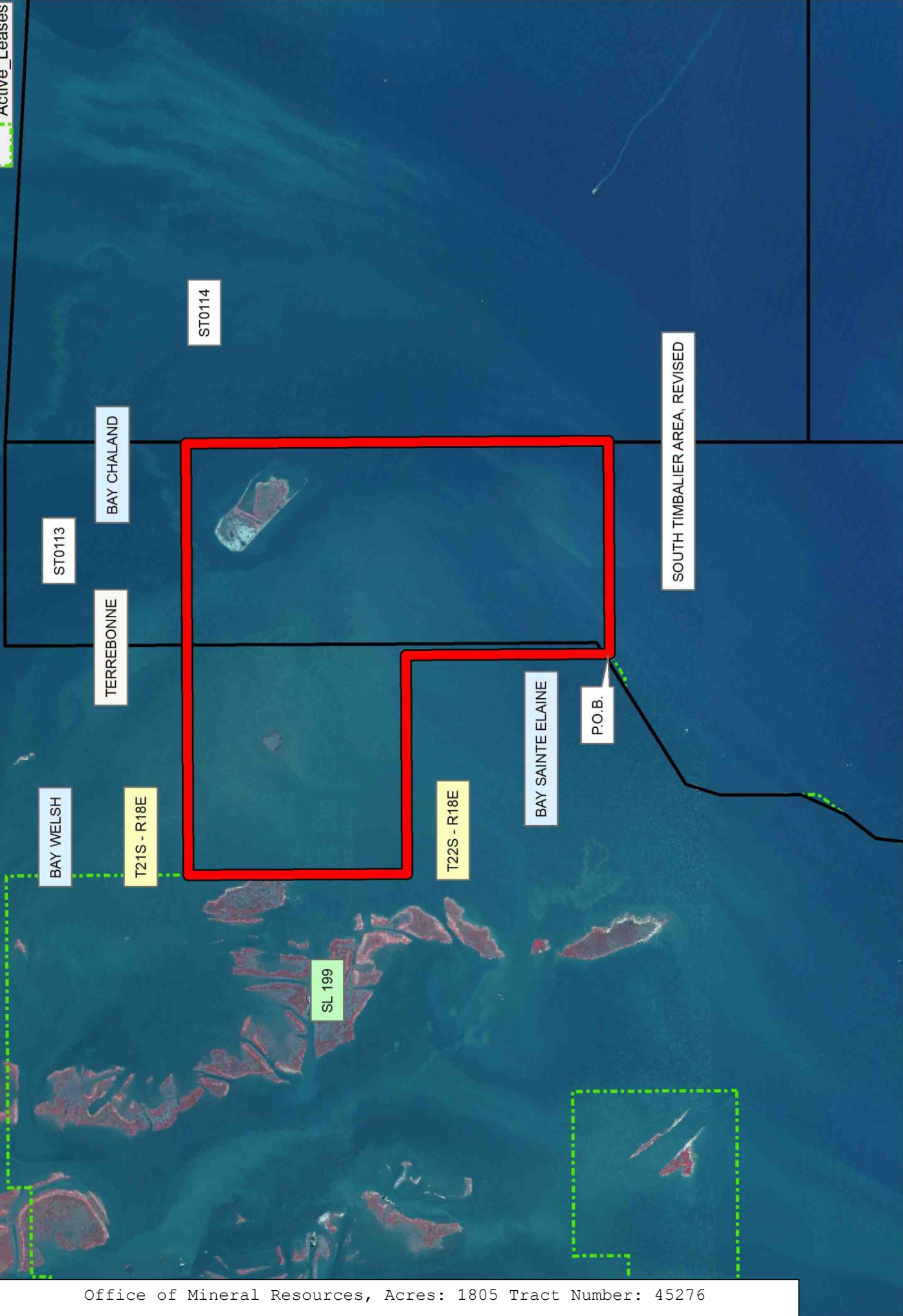
Bidder	Cash Payment	Price/ Acre	Rental	Oil	Gas	Other

Legend

20020008

Blocks

Active_Leases



TRACT 45277 - Portion of Blocks 113, 114, and 118, South Timbalier Area, Revised, Terrebonne Parish, Louisiana

All of the lands now or formerly constituting the beds and bottoms of all water bodies of every nature and description as to which title is vested in the State of Louisiana, together with all islands arising therein and other lands formed by accretion or by reliction, where allowed by law, excepting tax adjudicated lands, and not presently under mineral lease on February 12, 2020, situated in Terrebonne Parish, Louisiana, and more particularly described as follows: Beginning at a point having Coordinates of X = 2,221,190.83 and Y = 173,215.08, said point being the Northwest corner of State Lease No. 21109; thence South 89 degrees 39 minutes 53 seconds West 748.77 feet to a point having Coordinates of X = 2,220,442.07 and Y = 173,210.70, said point being the Southeast corner of State Lease No. 21728; thence North 00 degrees 21 minutes 25 seconds West 1,380.22 feet along the Eastern boundary of said State Lease No. 21728 to the Southwest corner of State Lease No. 21799 having Coordinates of X = 2,220,433.47 and Y = 174,590.89; thence along the boundary of said State Lease No. 21799 the following courses and distances: East 642.91 feet to a point having Coordinates of X = 2,221,076.38 and Y = 174,590.89 and North 28 degrees 56 minutes 09 seconds East 2,250.00 feet to the Southeast corner of State Lease No. 21783 having Coordinates of X = 2,222,165.00 and Y = 176,560.00; thence along the boundary of said State Lease No. 21783 the following courses and distances: North 42 degrees 51 minutes 02 seconds East 380.83 feet to a point having Coordinates of X = 2,222,424.00 and Y = 176,839.20, North 19 degrees 00 minutes 23 seconds East 1,157.61 feet to a point having Coordinates of X = 2,222,801.00 and Y = 177,933.70, North 19 degrees 18 minutes 57 seconds East 1,299.98 feet to a point having Coordinates of X = 2,223,231.00 and Y = 179,160.50, North 10 degrees 36 minutes 27 seconds East 1,222.29 feet to a point having Coordinates of X = 2,223,456.00 and Y = 180,361.90, North 85 degrees 00 minutes 53 seconds West 691.62 feet to a point having Coordinates of X = 2,222,767.00 and Y = 180,422.00, and North 85 degrees 00 minutes 53 seconds West 517.49 feet to its Northwest corner, also being a point on the boundary of State Lease No. 199, as amended, having Coordinates of X = 2,222,251.47 and Y = 180,466.97; thence along the boundary of said State Lease No. 199 the following courses and distances: North 00 degrees 20 minutes 05 seconds West 1,022.66 feet to a point having Coordinates of X = 2,222,245.50 and Y = 181,489.61, North 17 degrees 19 minutes 55 seconds East 871.00 feet to a point having Coordinates of X = 2,222,504.98 and Y = 182,321.06, North 57 degrees 41 minutes 55 seconds East 2,761.19 feet to a point having Coordinates of X = 2,224,838.87 and Y = 183,796.57, North 89 degrees 39 minutes 54 seconds East 246.23 feet to a point having Coordinates of X = 2,225,085.10 and Y = 183,798.01, and North 57 degrees 41 minutes 54 seconds East 678.03 feet to a point having Coordinates of X = 2,225,658.20 and Y = 184,160.33; thence North 89 degrees 39 minutes 55 seconds East 5,139.87 feet to a point having Coordinates of X = 2,230,797.98 and Y = 184,190.36; thence South 00 degrees 20 minutes 05 seconds East 10,918.97 feet to a point having Coordinates of X = 2,230,861.77 and Y = 173,271.58; thence South 89 degrees 39 minutes 55 seconds West 5,139.87 feet to the Northeast corner of said State Lease No. 21109, having Coordinates of X =

2,225,721.99 and Y = 173,241.55; thence South 89 degrees 39 minutes 55 seconds West 4,531.24 feet to the point of beginning, containing approximately **2,097.98 acres**, all as more particularly outlined on a plat on file in the Office of Mineral Resources, Department of Natural Resources. All bearings, distances and coordinates are based on Louisiana Coordinate System of 1927, (North or South Zone), where applicable.

NOTE: The above description of the Tract nominated for lease has been provided and corrected, where required, exclusively by the nomination party. Any mineral lease selected from this Tract and awarded by the Louisiana State Mineral and Energy Board shall be without warranty of any kind, either express, implied, or statutory, including, but not limited to, the implied warranties of merchantability and fitness for a particular purpose. Should the mineral lease awarded by the Louisiana State Mineral and Energy Board be subsequently modified, cancelled or abrogated due to the existence of conflicting leases, operating agreements, private claims or other future obligations or conditions which may affect all or any portion of the leased Tract, it shall not relieve the Lessee of the obligation to pay any bonus due thereon to the Louisiana State Mineral and Energy Board, nor shall the Louisiana State Mineral and Energy Board be obligated to refund any consideration paid by the Lessor prior to such modification, cancellation, or abrogation, including, but not limited to, bonuses, rentals and royalties.

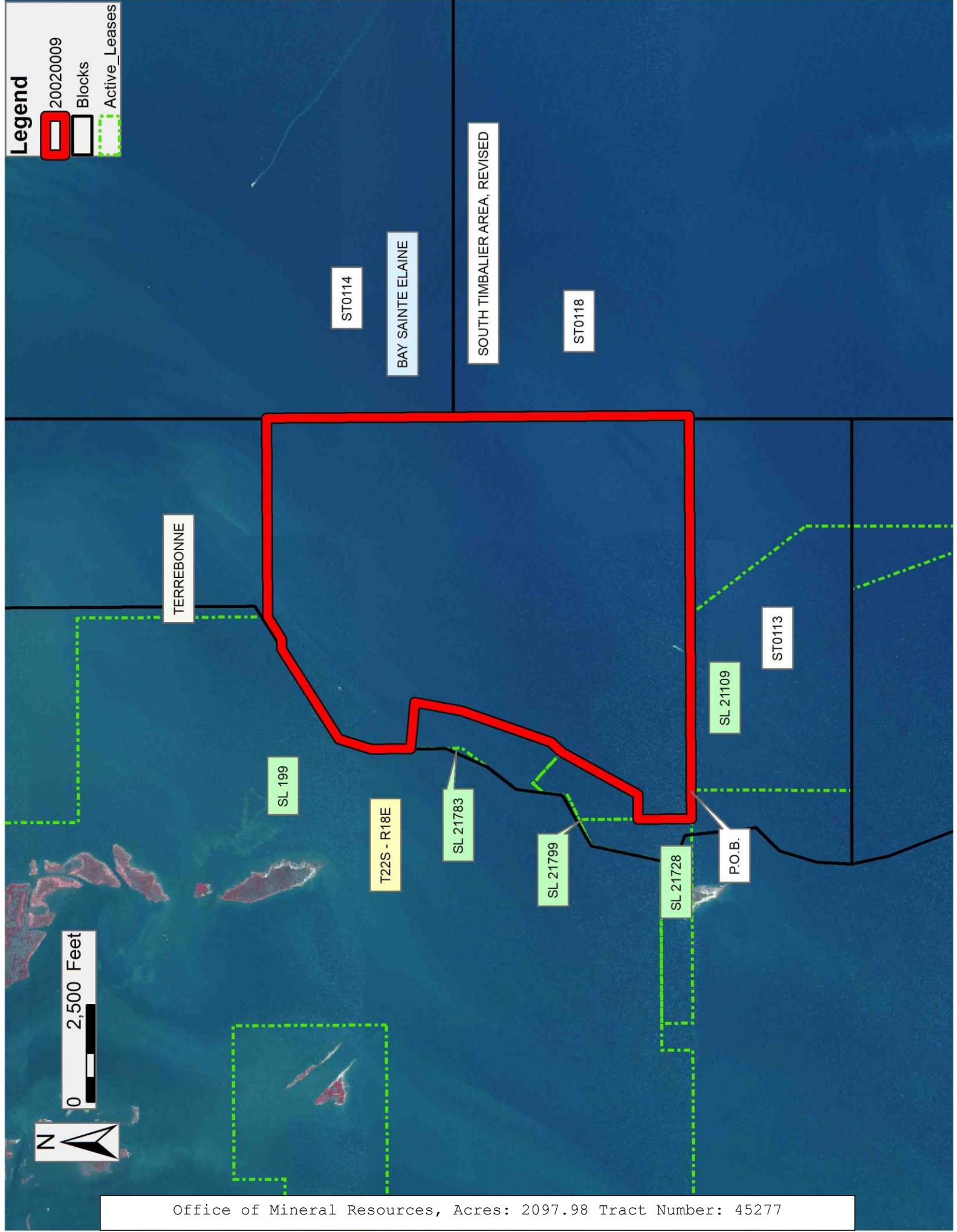
NOTE: The State of Louisiana does hereby reserve, and this lease shall be subject to, the imprescriptible right of surface use in the nature of a servitude in favor of the Department of Natural Resources, including its Offices and Commissions, for the sole purpose of implementing, constructing, servicing and maintaining approved coastal zone management and/or restoration projects. Utilization of any and all rights derived under this lease by the mineral lessee, its agents, successors or assigns, shall not interfere with nor hinder the reasonable surface use by the Department of Natural Resources, its Offices or Commissions, as herein above reserved.

Applicant: THEOPHILUS OIL, GAS & LAND SERVICES, LLC

Bidder	Cash Payment	Price/ Acre	Rental	Oil	Gas	Other

Legend

- 20020009
- Blocks
- Active_Leases



TRACT 45278 - Portion of Blocks 113, and 119, South Timbalier Area, Revised, Terrebonne Parish, Louisiana

All of the lands now or formerly constituting the beds and bottoms of all water bodies of every nature and description as to which title is vested in the State of Louisiana, together with all islands arising therein and other lands formed by accretion or by reliction, where allowed by law, excepting tax adjudicated lands, and not presently under mineral lease on February 12, 2020, situated in Terrebonne Parish, Louisiana, and more particularly described as follows: Beginning at a point having Coordinates of X = 2,221,190.83 and Y = 173,215.08, said point being the Northwest corner of State Lease No. 21109; thence South 00 degrees 14 minutes 24 seconds West 4,148.79 feet along the Western boundary of said State Lease No. 21109 to its Southwest corner, also being a point on the Northern boundary of State Lease No. 2620, as amended, having Coordinates of X = 2,221,173.46 and Y = 169,066.33; thence along the Northern and Western boundaries of said State Lease No. 2620 the following courses and distances: West approximately 1,809 feet to its Northwest corner and Southeasterly approximately 4,011 feet to a point having Coordinates of X = 2,220,542.06 and Y = 165,249.28, said point being on the Northern boundary of State Lease No. 188, as amended; thence South 89 degrees 39 minutes 56 seconds West 1,271.57 feet along said Northern boundary of said State Lease No. 188 to its Northwest corner having Coordinates of X = 2,219,270.51 and Y = 165,241.83; thence South 89 degrees 57 minutes 01 seconds West 13,000.00 feet to a point having Coordinates of X = 2,206,270.51 and Y = 165,230.55; thence North approximately 6,490 feet to a point on the Southern boundary of State Lease No. 199, as amended; thence along the boundary of said State Lease No. 199 the following courses and distances: East approximately 3,971 feet, Northerly approximately 1,400 feet, and Easterly approximately 4,230 feet to a point having Coordinates of X = 2,214,464.00 and Y = 173,173.00, North 00 degrees 20 minutes 04 seconds West 800.00 feet to a point having Coordinates of X = 2,214,459.33 and Y = 173,972.99, and North 89 degrees 39 minutes 57 seconds East 697.80 feet to the Northwest corner of State Lease No. 21728 having Coordinates of X = 2,215,157.12 and Y = 173,977.06; thence along the boundary of said State Lease No. 21728 the following courses and distances: South 00 degrees 21 minutes 45 seconds East 799.68 feet to a point having Coordinates of X = 2,215,162.18 and Y = 173,177.40, and North 89 degrees 38 minutes 19 seconds East 5,280.00 feet to its Southeast corner having Coordinates of X = 2,220,442.07 and Y = 173,210.70; thence North 89 degrees 39 minutes 53 seconds East 748.77 feet to the point of beginning, containing approximately **2,481 acres**, all as more particularly outlined on a plat on file in the Office of Mineral Resources, Department of Natural Resources. All bearings, distances and coordinates are based on Louisiana Coordinate System of 1927, (North or South Zone), where applicable.

NOTE: The above description of the Tract nominated for lease has been provided and corrected, where required, exclusively by the nomination party. Any mineral lease selected from this Tract and awarded by the Louisiana State Mineral and Energy Board shall be without warranty of any kind, either express, implied, or statutory, including, but not limited to, the implied

warranties of merchantability and fitness for a particular purpose. Should the mineral lease awarded by the Louisiana State Mineral and Energy Board be subsequently modified, cancelled or abrogated due to the existence of conflicting leases, operating agreements, private claims or other future obligations or conditions which may affect all or any portion of the leased Tract, it shall not relieve the Lessee of the obligation to pay any bonus due thereon to the Louisiana State Mineral and Energy Board, nor shall the Louisiana State Mineral and Energy Board be obligated to refund any consideration paid by the Lessor prior to such modification, cancellation, or abrogation, including, but not limited to, bonuses, rentals and royalties.

NOTE: The State of Louisiana does hereby reserve, and this lease shall be subject to, the imprescriptible right of surface use in the nature of a servitude in favor of the Department of Natural Resources, including its Offices and Commissions, for the sole purpose of implementing, constructing, servicing and maintaining approved coastal zone management and/or restoration projects. Utilization of any and all rights derived under this lease by the mineral lessee, its agents, successors or assigns, shall not interfere with nor hinder the reasonable surface use by the Department of Natural Resources, its Offices or Commissions, as herein above reserved.

Applicant: THEOPHILUS OIL, GAS & LAND SERVICES, LLC

Bidder	Cash Payment	Price/ Acre	Rental	Oil	Gas	Other

Legend

- 20020010
- Blocks
- Active_Leases

