

TRACT 44511 - Jefferson and Plaquemines Parishes, Louisiana

All of the lands now or formerly constituting the beds and bottoms of all water bodies of every nature and description as to which title is vested in the State of Louisiana, together with all islands arising therein and other lands formed by accretion or by reliction, where allowed by law, excepting tax adjudicated lands, and not presently under mineral lease on February 10, 2016, situated in Jefferson and Plaquemines Parishes, Louisiana, and more particularly described as follows: Beginning at a point on the east boundary of State Lease No. 13407, as amended having Coordinates of X = 2,436,451.50 and Y = 295,075.31; thence East 4,971.57 feet to a point having Coordinates of X = 2,441,423.07 and Y = 295,075.31; thence South 4,105.22 feet to a point on the north boundary of State Lease No. 19384, as amended having Coordinates of X = 2,441,423.07 and Y = 290,970.09; thence along the boundaries of said State Lease No. 19384 the following courses: South 83 degrees 37 minutes 00 seconds West 901.27 feet to a point having Coordinates of X = 2,440,527.39 and Y = 290,869.89, South 06 degrees 23 minutes 00 seconds East 1,866.76 feet to a point having Coordinates of X = 2,440,734.94 and Y = 289,014.70 and North 82 degrees 52 minutes 36 seconds East 693.48 feet to a point having Coordinates of X = 2,441,423.07 and Y = 289,100.70; thence South 5,100.23 feet to a point having Coordinates of X = 2,441,423.07 and Y = 284,000.46; thence West 7,437.77 feet to a point on the East boundary of State Lease No. 21505, as amended having Coordinates of X = 2,433,985.30 and Y = 284,000.46; thence along the boundaries of said State Lease No. 21505 the following courses: North 4,321.85 feet to a point having Coordinates of X = 2,433,985.30 and Y = 288,322.31 and South 65 degrees 17 minutes 51 seconds West 3,060.08 feet to a point having Coordinates of X = 2,431,205.25 and Y = 287,043.49; thence North 3,435.55 feet to the Southeast corner of State Lease No. 15858, as amended and the Southern tip of State Lease No. 16007, as amended having Coordinates of X = 2,431,205.25 and Y = 290,479.04; thence along the boundaries of said State Lease No. 16007 the following courses: Northeasterly along an arc having a radius of 1,686 feet and a center of X = 2,430,000.20 and Y = 291,658.22 to a point having Coordinates of X = 2,431,623.62 and Y = 291,203.10 and Northwesterly along an arc having a radius of 4,000 feet and a center of X = 2,427,673.35 and Y = 291,831.92 to its Northeast corner and the Southeast corner of State Lease No. 16006, as amended having Coordinates of X = 2,431,655.36 and Y = 292,210.86; thence along the boundaries of said State Lease No. 16006 the following courses: Northwesterly along an arc with a radius of 4,000 feet and a center of X = 2,427,673.35 and Y = 291,831.92 to a point having Coordinates of X = 2,431,547.41 and Y = 292,827.75 and North 68 degrees 32 minutes 33 seconds West 367.64 feet to a point having Coordinates of X = 2,431,205.25 and Y = 292,962.24; thence North 937.76 feet to a point having Coordinates of X = 2,431,205.25 and Y = 293,900.00; thence East 1,414.75 feet to the Western tip of said State Lease No. 13407 having Coordinates of X = 2,432,620.00 and Y = 293,900.00; thence along the boundaries of said State Lease No. 13407 the following courses: South 21 degrees 12 minutes 23 seconds East 2,070.87 feet to a point having Coordinates of X = 2,433,369.09 and Y = 291,969.36, South 69 degrees 10 minutes 45 seconds East 814.07 feet to a point having

Coordinates of X = 2,434,130.00 and Y = 291,680.00, Northeasterly along an arc having a radius of 13,000 feet and a chord bearing of North 34 degrees 32 minutes 16 seconds East 4,030.34 feet to a point having Coordinates of X = 2,436,415.00 and Y = 295,000.00 and North 25 degrees 51 minutes 20 seconds East 83.69 feet to the point of beginning, containing approximately **1,477 acres**, all as more particularly outlined on a plat on file in the Office of Mineral Resources, Department of Natural Resources. All bearings, distances and coordinates are based on Louisiana Coordinate System of 1927, (North or South Zone), where applicable.

NOTE: The above description of the Tract nominated for the purpose of acquiring a mineral lease or a geophysical agreement has been provided and corrected, where required, exclusively by the nominating party. Any mineral lease or geophysical agreement selected from this Tract and awarded by the Louisiana State Mineral and Energy Board shall be without warranty of any kind, either express, implied or statutory including, but not limited to, title or the implied warranties of merchantability and fitness for a particular purpose.

An error or omission in the nominating party's Tract description may require that a State mineral lease or geophysical agreement be modified, canceled or abrogated due to the existence of conflicting leases, operating agreements, private claims or other future obligations or conditions within the Tract described. In such case, however, the Louisiana State Mineral and Energy Board shall not be obligated to refund any consideration paid by the Lessee prior to such modification, cancellation or abrogation including, but not limited to, bonuses, rentals and royalties.

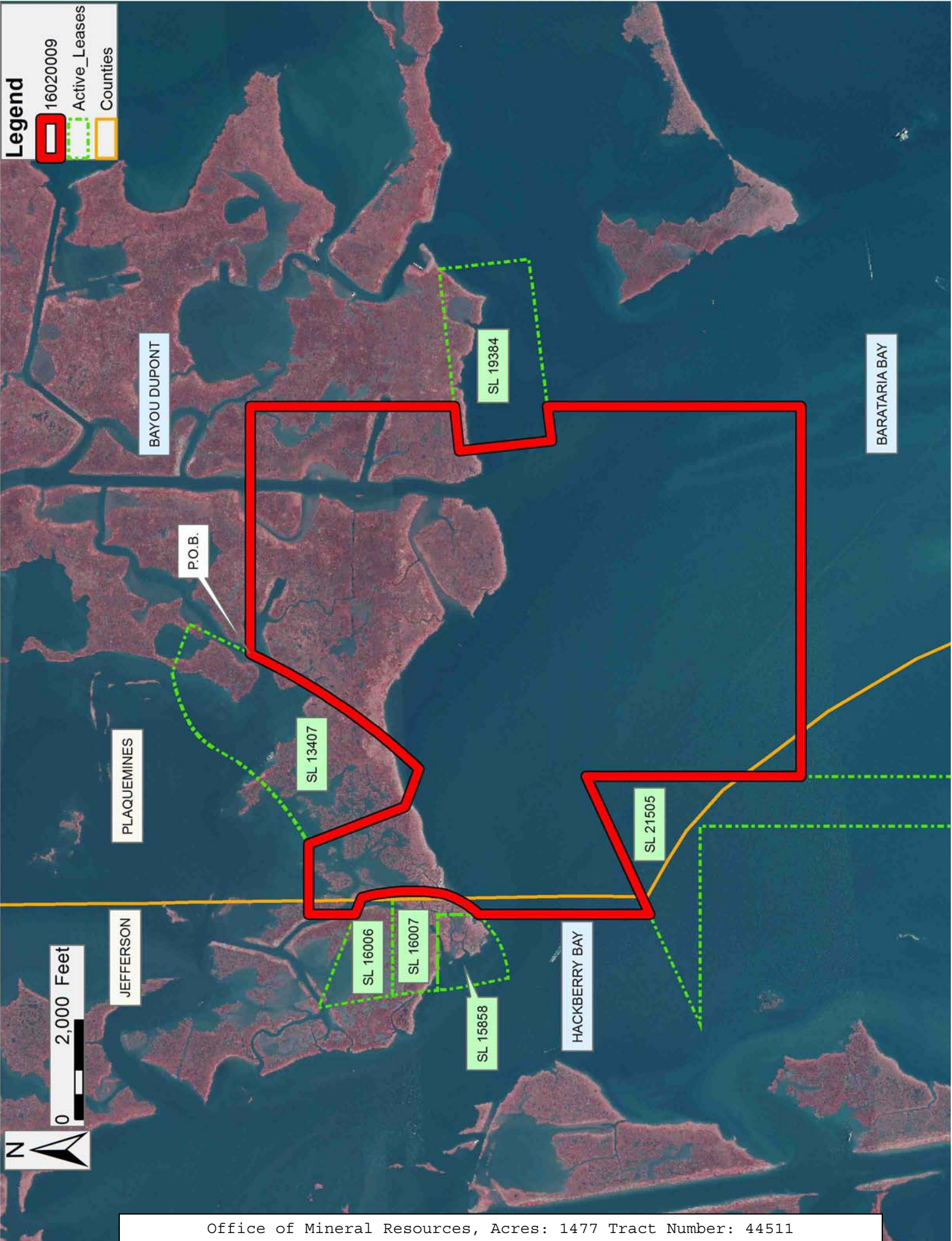
NOTE: The State of Louisiana does hereby reserve, and this lease shall be subject to, the imprescriptible right of surface use in the nature of a servitude in favor of the Department of Natural Resources, including its Offices and Commissions, for the sole purpose of implementing, constructing, servicing and maintaining approved coastal zone management and/or restoration projects. Utilization of any and all rights derived under this lease by the mineral lessee, its agents, successors or assigns, shall not interfere with nor hinder the reasonable surface use by the Department of Natural Resources, its Offices or Commissions, as herein above reserved.

Applicant: CYPRESS ENERGY CORPORATION

Bidder	Cash Payment	Price/Acre	Rental	Oil	Gas	Other

Legend

- 16020009
- Active_Leases
- Counties



TRACT 44512 - Jefferson and Lafourche Parishes, Louisiana

All of the lands now or formerly constituting the beds and bottoms of all water bodies of every nature and description as to which title is vested in the State of Louisiana, together with all islands arising therein and other lands formed by accretion or by reliction, where allowed by law, excepting tax adjudicated lands, and not presently under mineral lease on February 10, 2016, situated in Jefferson and Lafourche Parishes, Louisiana, and more particularly described as follows: Beginning at a point having Coordinates of X = 2,400,259.57 and Y = 293,835.90; thence East 15,293.68 feet to a point having Coordinates of X = 2,415,553.25 and Y = 293,835.90; thence South 7,813.59 feet to a point having Coordinates of X = 2,415,553.25 and Y = 286,022.31; thence West 15,293.68 feet to a point having Coordinates of X = 2,400,259.57 and Y = 286,022.31; thence North 7,813.59 feet to the point of beginning, containing approximately **2,101 acres**, all as more particularly outlined on a plat on file in the Office of Mineral Resources, Department of Natural Resources. All bearings, distances and coordinates are based on Louisiana Coordinate System of 1927, (North or South Zone), where applicable.

NOTE: The above description of the Tract nominated for the purpose of acquiring a mineral lease or a geophysical agreement has been provided and corrected, where required, exclusively by the nominating party. Any mineral lease or geophysical agreement selected from this Tract and awarded by the Louisiana State Mineral and Energy Board shall be without warranty of any kind, either express, implied or statutory including, but not limited to, title or the implied warranties of merchantability and fitness for a particular purpose.

An error or omission in the nominating party's Tract description may require that a State mineral lease or geophysical agreement be modified, canceled or abrogated due to the existence of conflicting leases, operating agreements, private claims or other future obligations or conditions within the Tract described. In such case, however, the Louisiana State Mineral and Energy Board shall not be obligated to refund any consideration paid by the Lessee prior to such modification, cancellation or abrogation including, but not limited to, bonuses, rentals and royalties.

NOTE: The State of Louisiana does hereby reserve, and this lease shall be subject to, the imprescriptible right of surface use in the nature of a servitude in favor of the Department of Natural Resources, including its Offices and Commissions, for the sole purpose of implementing, constructing, servicing and maintaining approved coastal zone management and/or restoration projects. Utilization of any and all rights derived under this lease by the mineral lessee, its agents, successors or assigns, shall not interfere with nor hinder the reasonable surface use by the Department of Natural Resources, its Offices or Commissions, as herein above reserved.

Applicant: CYPRESS ENERGY CORPORATION

Bidder	Cash Payment	Price/Acre	Rental	Oil	Gas	Other

Legend

 16020011

 Counties



TRACT 44513 - Plaquemines Parish, Louisiana

All of the lands now or formerly constituting the beds and bottoms of all water bodies of every nature and description as to which title is vested in the State of Louisiana, together with all islands arising therein and other lands formed by accretion or by reliction, where allowed by law, excepting tax adjudicated lands, and not presently under mineral lease on February 10, 2016, situated in Plaquemines Parish, Louisiana, and more particularly described as follows: Beginning at a point having Coordinates of X = 2,496,069.54 and Y = 286,600.00; thence East 15,033.33 feet to a point having Coordinates of X = 2,511,102.87 and Y = 286,600.00; thence South 9,696.74 feet to a point having Coordinates of X = 2,511,102.87 and Y = 276,903.26; thence West approximately 6,997.41 feet to the Northeast corner of State Lease No. 2376 having Coordinates of X = 2,504,105.46 and Y = 276,903.26; thence South 89 degrees 15 minutes 00 seconds West 7,952.84 feet to the Northwest corner of said State Lease No. 2376, also being a point on the Eastern boundary of State Lease No. 2104 having Coordinates of X = 2,496,153.31 and Y = 276,799.16; thence North 00 degrees 45 minutes 00 seconds West 6,399.91 feet along the Eastern boundary of said State Lease No. 2104 to its Northeast corner having Coordinates of X = 2,496,069.54 and Y = 283,198.52; thence North 3,401.48 feet to the point of beginning, containing approximately **255 acres**, all as more particularly outlined on a plat on file in the Office of Mineral Resources, Department of Natural Resources. All bearings, distances and coordinates are based on Louisiana Coordinate System of 1927, (North or South Zone), where applicable.

NOTE: The above description of the Tract nominated for the purpose of acquiring a mineral lease or a geophysical agreement has been provided and corrected, where required, exclusively by the nominating party. Any mineral lease or geophysical agreement selected from this Tract and awarded by the Louisiana State Mineral and Energy Board shall be without warranty of any kind, either express, implied or statutory including, but not limited to, title or the implied warranties of merchantability and fitness for a particular purpose.

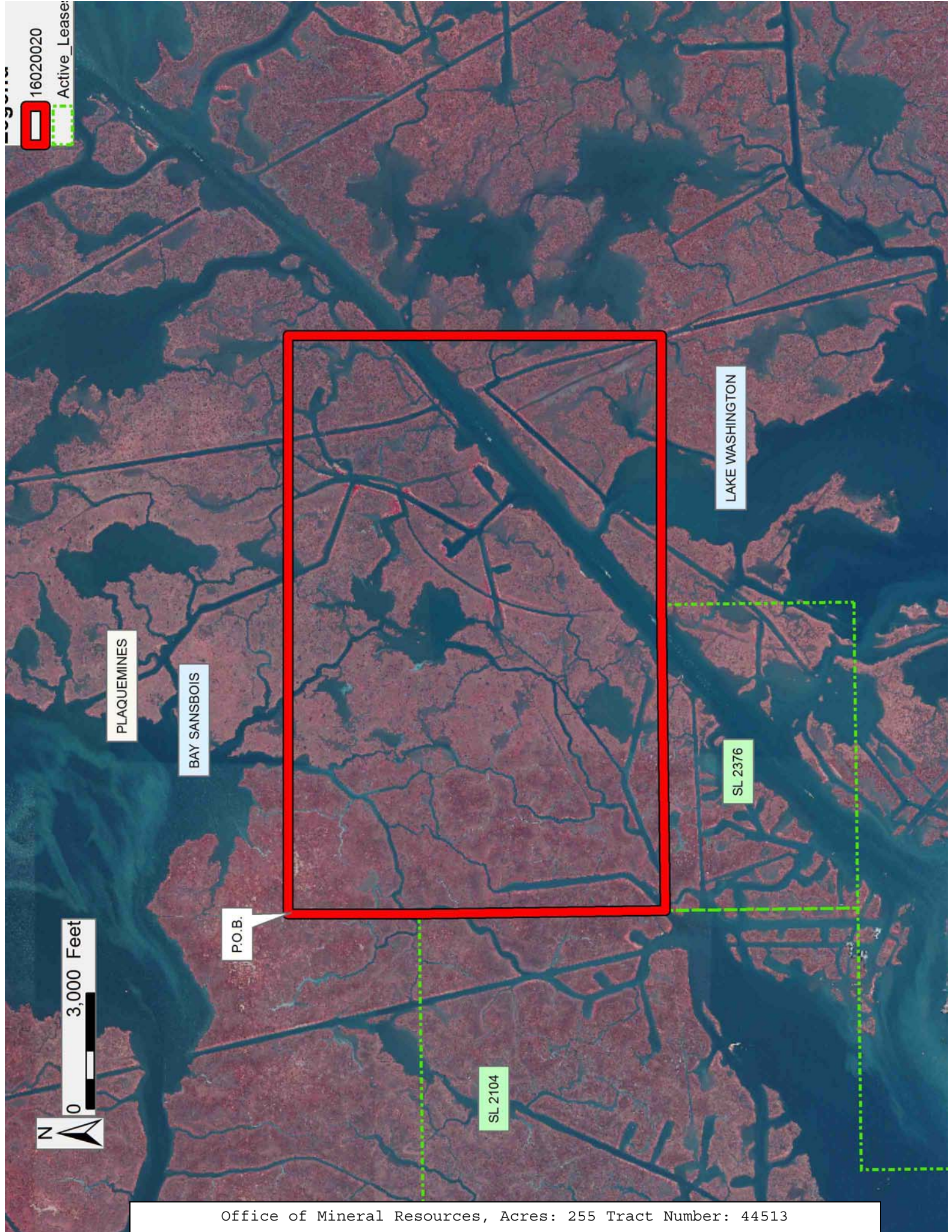
An error or omission in the nominating party's Tract description may require that a State mineral lease or geophysical agreement be modified, canceled or abrogated due to the existence of conflicting leases, operating agreements, private claims or other future obligations or conditions within the Tract described. In such case, however, the Louisiana State Mineral and Energy Board shall not be obligated to refund any consideration paid by the Lessee prior to such modification, cancellation or abrogation including, but not limited to, bonuses, rentals and royalties.

NOTE: The State of Louisiana does hereby reserve, and this lease shall be subject to, the imprescriptible right of surface use in the nature of a servitude in favor of the Department of Natural Resources, including its Offices and Commissions, for the sole purpose of implementing,

constructing, servicing and maintaining approved coastal zone management and/or restoration projects. Utilization of any and all rights derived under this lease by the mineral lessee, its agents, successors or assigns, shall not interfere with nor hinder the reasonable surface use by the Department of Natural Resources, its Offices or Commissions, as herein above reserved.

Applicant: OIL LAND SERVICES, INC.

Bidder	Cash Payment	Price/Acre	Rental	Oil	Gas	Other



16020020
Active Lease:

PLAQUEMINES

BAY SANSBOIS

P.O.B.

SL 2104

LAKE WASHINGTON

SL 2376

0 3,000 Feet



TRACT 44514 - Plaquemines Parish, Louisiana

All of the lands now or formerly constituting the beds and bottoms of all water bodies of every nature and description as to which title is vested in the State of Louisiana, together with all islands arising therein and other lands formed by accretion or by reliction, where allowed by law, excepting tax adjudicated lands, and not presently under mineral lease on February 10, 2016, situated in Plaquemines Parish, Louisiana, and more particularly described as follows: Beginning at a point having Coordinates of X = 2,511,102.87 and Y = 286,600.00; thence East 10,232.37 feet to a point having Coordinates of X = 2,521,335.24 and Y = 286,600.00; thence South 8,683.61 feet to the Northwest corner of State Lease No. 20456 having Coordinates of X = 2,521,335.24 and Y = 277,916.39; thence along the Western boundary of said State Lease No. 20456 South 01 degrees 56 minutes 41 seconds East 1,293.17 feet to the Southwest corner of State Lease No. 20456, also being a point on the Northern boundary of State Lease No. 20008 having Coordinates of X = 2,521,379.15 and Y = 276,623.22; thence along the Northern boundary of State Lease No. 20008 South 87 degrees 52 minutes 21 seconds West 2,873.03 feet to the Westernmost Northwest corner of State Lease No. 20008 having Coordinates of X = 2,518,506.12 and Y = 276,516.49; thence West 7,403.25 feet to a point having Coordinates of X = 2,511,102.87 and Y = 276,516.49; thence North 10,083.51 feet to the point of beginning, containing approximately **187 acres**, all as more particularly outlined on a plat on file in the Office of Mineral Resources, Department of Natural Resources. All bearings, distances and coordinates are based on Louisiana Coordinate System of 1927, (North or South Zone), where applicable.

NOTE: The above description of the Tract nominated for the purpose of acquiring a mineral lease or a geophysical agreement has been provided and corrected, where required, exclusively by the nominating party. Any mineral lease or geophysical agreement selected from this Tract and awarded by the Louisiana State Mineral and Energy Board shall be without warranty of any kind, either express, implied or statutory including, but not limited to, title or the implied warranties of merchantability and fitness for a particular purpose.

An error or omission in the nominating party's Tract description may require that a State mineral lease or geophysical agreement be modified, canceled or abrogated due to the existence of conflicting leases, operating agreements, private claims or other future obligations or conditions within the Tract described. In such case, however, the Louisiana State Mineral and Energy Board shall not be obligated to refund any consideration paid by the Lessee prior to such modification, cancellation or abrogation including, but not limited to, bonuses, rentals and royalties.

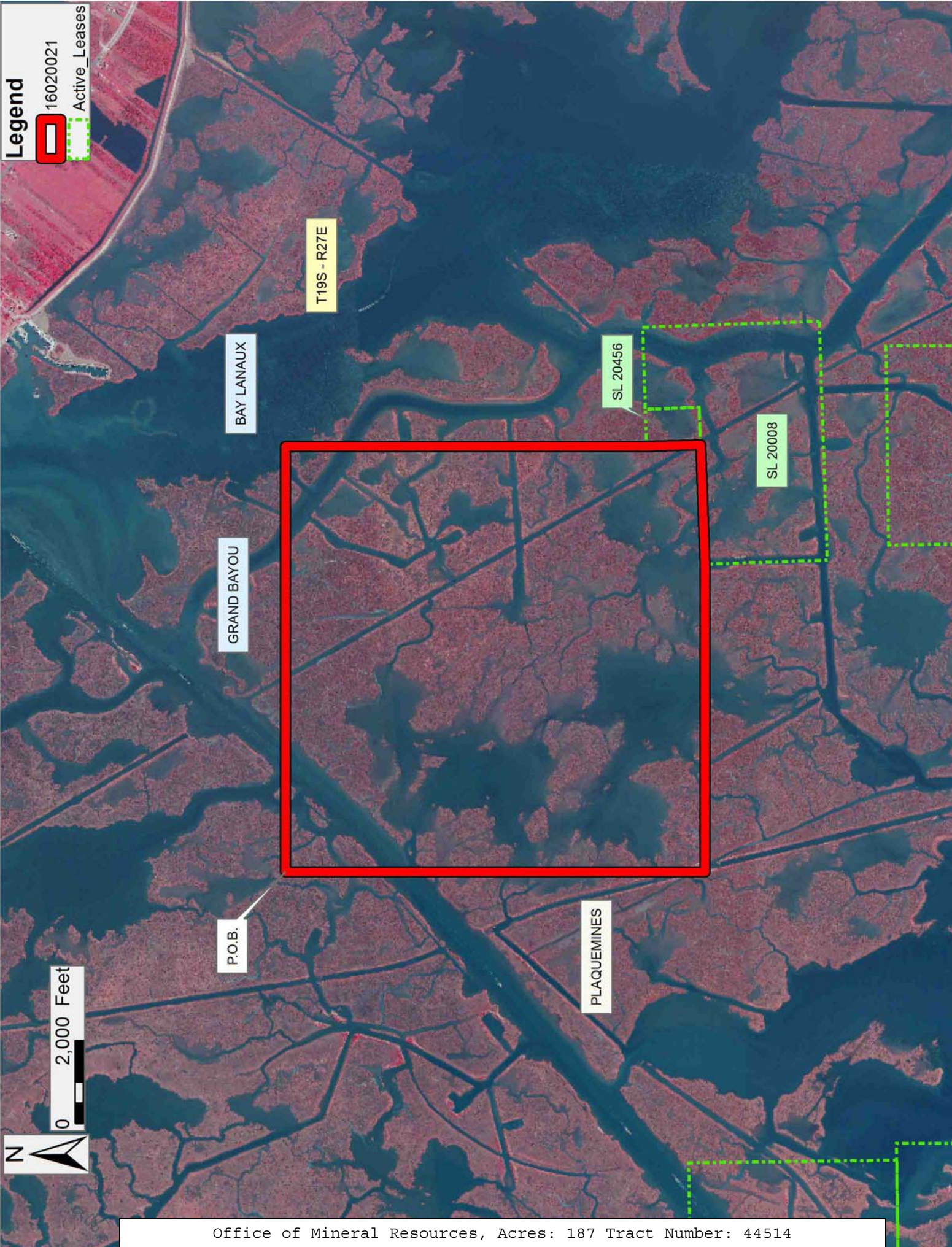
NOTE: The State of Louisiana does hereby reserve, and this lease shall be subject to, the imprescriptible right of surface use in the nature of a servitude in favor of the Department of Natural Resources, including its

Offices and Commissions, for the sole purpose of implementing, constructing, servicing and maintaining approved coastal zone management and/or restoration projects. Utilization of any and all rights derived under this lease by the mineral lessee, its agents, successors or assigns, shall not interfere with nor hinder the reasonable surface use by the Department of Natural Resources, its Offices or Commissions, as herein above reserved.

Applicant: OIL LAND SERVICES, INC.

Bidder	Cash Payment	Price/Acre	Rental	Oil	Gas	Other

Legend
16020021
Active_Leases



TRACT 44515 - Jefferson and Lafourche Parishes, Louisiana

All of the lands now or formerly constituting the beds and bottoms of all water bodies of every nature and description as to which title is vested in the State of Louisiana, together with all islands arising therein and other lands formed by accretion or by reliction, where allowed by law, excepting tax adjudicated lands, and not presently under mineral lease on February 10, 2016, situated in Jefferson and Lafourche Parishes, Louisiana, and more particularly described as follows: Beginning at a point having Coordinates of X = 2,416,921.81 and Y = 386,022.31; thence East 10,025.75 feet to a point having Coordinates of X = 2,426,947.55 and Y = 386,022.31; thence South 11,182.91 feet to a point having Coordinates of X = 2,426,947.55 and Y = 274,839.40; thence Westerly approximately 7,249 feet to a point on the eastern boundary of State Lease No. 356, as amended and State Lease No. 1217, as amended; thence along the boundaries of both said State Lease No. 356 and State Lease No. 1217 the following courses: Northerly, Westerly and Northerly to the Northeast corner of the North portion of said State Lease No. 356; thence continue Northerly along the Eastern boundary of said State Lease No. 1217 to its Northeast corner; thence continue Northerly approximately 4,909 feet to the point of beginning, containing approximately **2,005 acres**, all as more particularly outlined on a plat on file in the Office of Mineral Resources, Department of Natural Resources. All bearings, distances and coordinates are based on Louisiana Coordinate System of 1927, (North or South Zone), where applicable.

NOTE: The above description of the Tract nominated for the purpose of acquiring a mineral lease or a geophysical agreement has been provided and corrected, where required, exclusively by the nominating party. Any mineral lease or geophysical agreement selected from this Tract and awarded by the Louisiana State Mineral and Energy Board shall be without warranty of any kind, either express, implied or statutory including, but not limited to, title or the implied warranties of merchantability and fitness for a particular purpose.

An error or omission in the nominating party's Tract description may require that a State mineral lease or geophysical agreement be modified, canceled or abrogated due to the existence of conflicting leases, operating agreements, private claims or other future obligations or conditions within the Tract described. In such case, however, the Louisiana State Mineral and Energy Board shall not be obligated to refund any consideration paid by the Lessee prior to such modification, cancellation or abrogation including, but not limited to, bonuses, rentals and royalties.

NOTE: The State of Louisiana does hereby reserve, and this lease shall be subject to, the imprescriptible right of surface use in the nature of a servitude in favor of the Department of Natural Resources, including its Offices and Commissions, for the sole purpose of implementing, constructing, servicing and maintaining approved coastal zone management

and/or restoration projects. Utilization of any and all rights derived under this lease by the mineral lessee, its agents, successors or assigns, shall not interfere with nor hinder the reasonable surface use by the Department of Natural Resources, its Offices or Commissions, as herein above reserved.

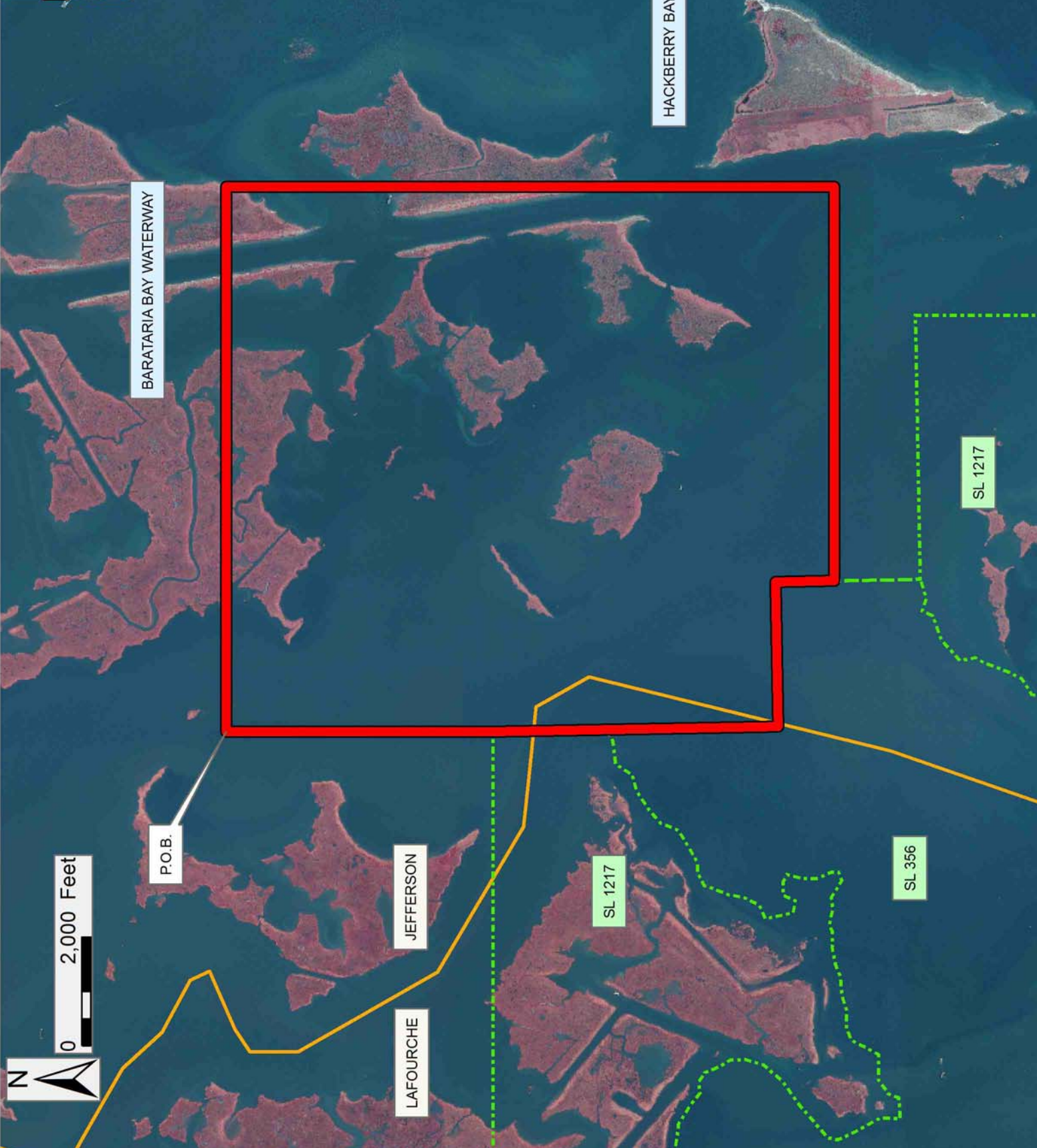
NOTE: This tract is located in an area designated by the Louisiana Legislature or the Wildlife and Fisheries Commission as a Public Oyster Seed Ground, Reservation, or area of Calcasieu or Sabine Lake. Proposed projects occurring in these areas will be evaluated on a case by case basis by Louisiana Department of Wildlife & Fisheries. Modifications to proposed project features including, but not limited to, access routes, well sites, flowlines, and appurtenant structures maybe required by the Louisiana Department of Wildlife and Fisheries. In addition, compensatory mitigation will be required to offset unavoidable habitat impacts.

Applicant: CYPRESS ENERGY CORPORATION

Bidder	Cash Payment	Price/Acre	Rental	Oil	Gas	Other

Legend

- 16020012
- Active_Leases
- Counties



TRACT 44516 - Jefferson and Plaquemines Parishes, Louisiana

All of the lands now or formerly constituting the beds and bottoms of all water bodies of every nature and description as to which title is vested in the State of Louisiana, together with all islands arising therein and other lands formed by accretion or by reliction, where allowed by law, excepting tax adjudicated lands, and not presently under mineral lease on February 10, 2016, situated in Jefferson and Plaquemines Parishes, Louisiana, and more particularly described as follows: Beginning at a point having Coordinates of X = 2,426,947.55 and Y = 286,022.31; thence East 2,037.75 feet to the Western tip of State Lease No. 21505, as amended and the Northwest corner of State Lease No. 21495, as amended having Coordinates of X = 2,428,985.30 and Y = 286,022.31; thence along the boundaries of said State Lease No. 21495 the following courses: South 3,000.00 feet to a point having Coordinates of X = 2,428,985.30 and Y = 283,022.31 and South 53 degrees 07 minutes 48 seconds East 5,000.00 feet to its Southeast corner and the Southwest corner of said State Lease No. 21505 having Coordinates of X = 2,432,985.30 and Y = 280,022.31; thence along the boundaries of said State Lease No. 21505 the following courses: South 56 degrees 58 minutes 34 seconds East 1,192.69 feet to a point having Coordinates of X = 2,433,985.30 and Y = 279,372.31 and North 4,628.15 feet to a point having Coordinates of X = 2,433,985.30 and Y = 284,000.46; thence East 5,124.56 feet to a point having Coordinates of X = 2,439,109.87 and Y = 284,000.46; thence South 4,650.46 feet to the Northwest corner of State Lease No. 3035, as amended having Coordinates of X = 2,439,109.87 and Y = 279,350.00; thence South 00 degrees 41 minutes 53 seconds East 2,776.77 feet along the West boundary of said State Lease No. 3035 to the Northeast corner of State Lease No. 14374, as amended having Coordinates of X = 2,439,143.70 and Y = 276,573.44; thence West 1,004.02 feet along the North boundary of said State Lease No. 14374 to its Northwest corner and a point on East boundary of State Lease No. 14534 having Coordinates of X = 2,438,139.68 and Y = 276,573.44; thence along the boundaries of said State Lease No. 14534 the following courses: North 00 degrees 38 minutes 42 seconds West 968.55 feet to a point having Coordinates of X = 2,438,128.78 and Y = 277,541.93, West 2,996.76 feet to a point having Coordinates of X = 2,435,132.02 and Y = 277,541.93 and South 2,702.53 feet to a point having Coordinates of X = 2,435,132.02 and Y = 274,839.40; thence West 8,184.47 feet to a point having Coordinates of X = 2,426,947.55 and Y = 274,839.40; thence North 11,182.91 feet to the point of beginning, containing approximately **1,859 acres**, all as more particularly outlined on a plat on file in the Office of Mineral Resources, Department of Natural Resources. All bearings, distances and coordinates are based on Louisiana Coordinate System of 1927, (North or South Zone), where applicable.

NOTE: The above description of the Tract nominated for the purpose of acquiring a mineral lease or a geophysical agreement has been provided and corrected, where required, exclusively by the nominating party. Any mineral lease or geophysical agreement selected from this Tract and awarded by the Louisiana State Mineral and Energy Board shall be without

warranty of any kind, either express, implied or statutory including, but not limited to, title or the implied warranties of merchantability and fitness for a particular purpose.

An error or omission in the nominating party's Tract description may require that a State mineral lease or geophysical agreement be modified, canceled or abrogated due to the existence of conflicting leases, operating agreements, private claims or other future obligations or conditions within the Tract described. In such case, however, the Louisiana State Mineral and Energy Board shall not be obligated to refund any consideration paid by the Lessee prior to such modification, cancellation or abrogation including, but not limited to, bonuses, rentals and royalties.

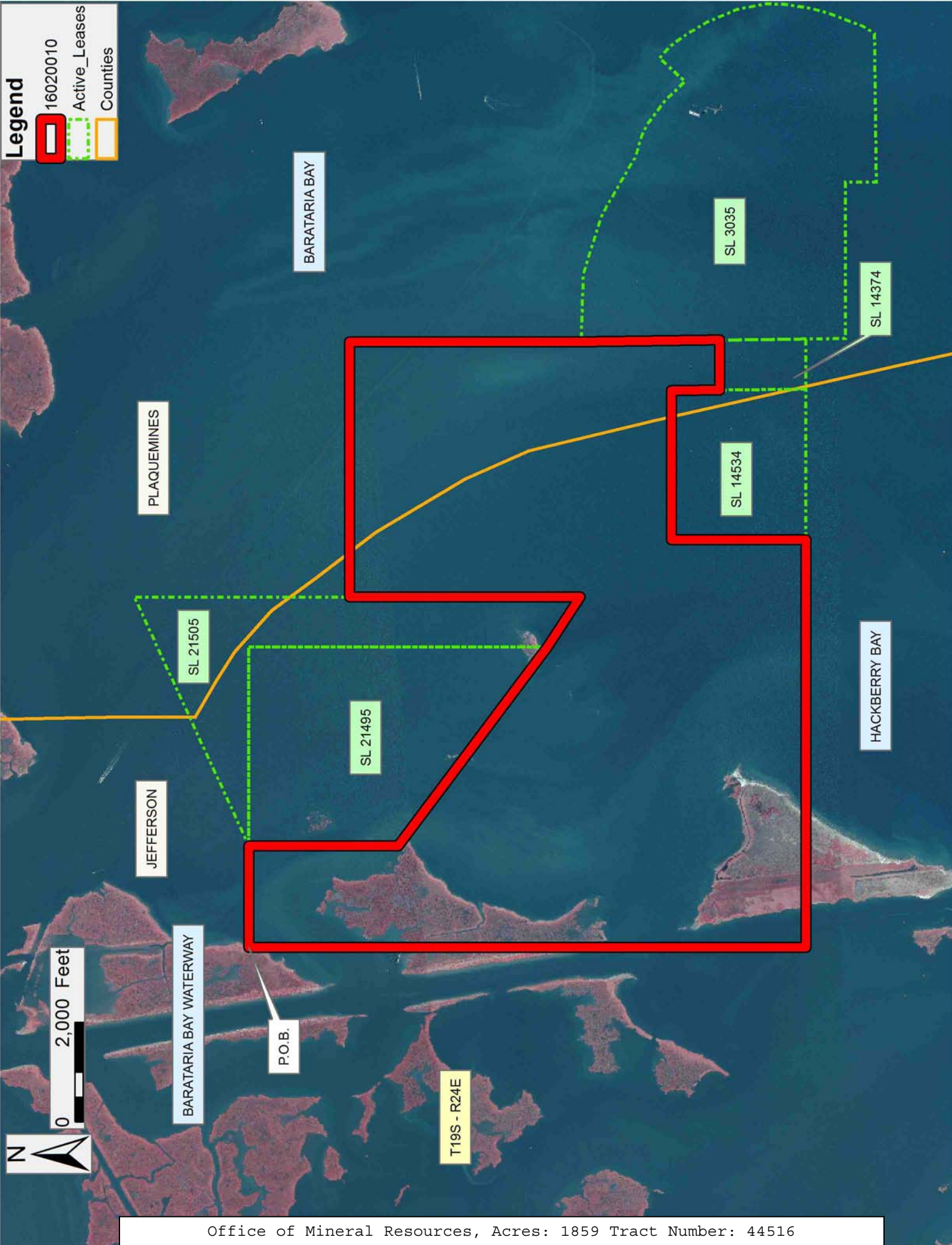
NOTE: The State of Louisiana does hereby reserve, and this lease shall be subject to, the imprescriptible right of surface use in the nature of a servitude in favor of the Department of Natural Resources, including its Offices and Commissions, for the sole purpose of implementing, constructing, servicing and maintaining approved coastal zone management and/or restoration projects. Utilization of any and all rights derived under this lease by the mineral lessee, its agents, successors or assigns, shall not interfere with nor hinder the reasonable surface use by the Department of Natural Resources, its Offices or Commissions, as herein above reserved.

Applicant: CYPRESS ENERGY CORPORATION

Bidder	Cash Payment	Price/Acre	Rental	Oil	Gas	Other

Legend

- 16020010
- Active_Leases
- Counties



TRACT 44517 - Jefferson and Lafourche Parishes, Louisiana

All of the lands now or formerly constituting the beds and bottoms of all water bodies of every nature and description as to which title is vested in the State of Louisiana, together with all islands arising therein and other lands formed by accretion or by reliction, where allowed by law, excepting tax adjudicated lands, and not presently under mineral lease on February 10, 2016, situated in Jefferson and Lafourche Parishes, Louisiana, and more particularly described as follows: Beginning at a point having Coordinates of X = 2,398,441.81 and Y = 386,022.31; thence East 18,480 feet to a point having Coordinates of X = 2,416,921.81 and Y = 386,022.31; thence Southerly approximately 4,909 feet to the Northeast corner of State Lease No. 1217, as amended; thence Westerly approximately 18,480 feet along the North boundary of said State Lease No. 1217 to a point; thence Northerly approximately 4,909 feet to the point of beginning, containing approximately **1,315 acres**, all as more particularly outlined on a plat on file in the Office of Mineral Resources, Department of Natural Resources. All bearings, distances and coordinates are based on Louisiana Coordinate System of 1927, (North or South Zone), where applicable.

NOTE: The above description of the Tract nominated for the purpose of acquiring a mineral lease or a geophysical agreement has been provided and corrected, where required, exclusively by the nominating party. Any mineral lease or geophysical agreement selected from this Tract and awarded by the Louisiana State Mineral and Energy Board shall be without warranty of any kind, either express, implied or statutory including, but not limited to, title or the implied warranties of merchantability and fitness for a particular purpose.

An error or omission in the nominating party's Tract description may require that a State mineral lease or geophysical agreement be modified, canceled or abrogated due to the existence of conflicting leases, operating agreements, private claims or other future obligations or conditions within the Tract described. In such case, however, the Louisiana State Mineral and Energy Board shall not be obligated to refund any consideration paid by the Lessee prior to such modification, cancellation or abrogation including, but not limited to, bonuses, rentals and royalties.

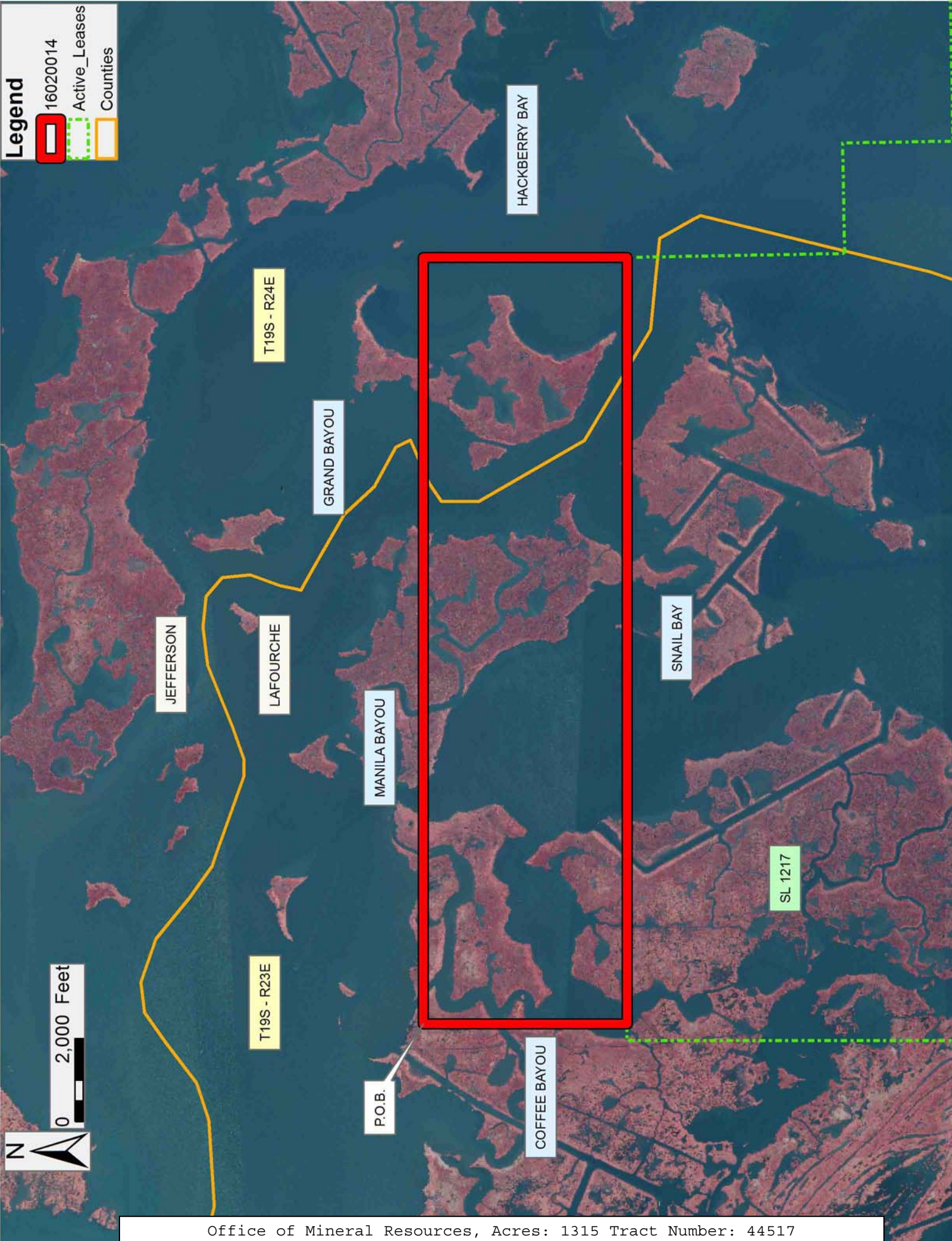
NOTE: The State of Louisiana does hereby reserve, and this lease shall be subject to, the imprescriptible right of surface use in the nature of a servitude in favor of the Department of Natural Resources, including its Offices and Commissions, for the sole purpose of implementing, constructing, servicing and maintaining approved coastal zone management and/or restoration projects. Utilization of any and all rights derived under this lease by the mineral lessee, its agents, successors or assigns, shall not interfere with nor hinder the reasonable surface use by the Department of Natural Resources, its Offices or Commissions, as herein above reserved.

Applicant: CYPRESS ENERGY CORPORATION

Bidder	Cash Payment	Price/Acre	Rental	Oil	Gas	Other

Legend

- 16020014
- Active_Leases
- Counties



0 2,000 Feet



TRACT 44518 - Plaquemines Parish, Louisiana

All of the lands now or formerly constituting the beds and bottoms of all water bodies of every nature and description as to which title is vested in the State of Louisiana, together with all islands arising therein and other lands formed by accretion or by reliction, where allowed by law, excepting tax adjudicated lands, and not presently under mineral lease on February 10, 2016, situated in Plaquemines Parish, Louisiana, and more particularly described as follows: Beginning at the Northeast corner of State Lease No. 20008 having Coordinates of X = 2,524,208.59 and Y = 278,013.95; thence South 88 degrees 03 minutes 19 seconds West 1,976.62 feet along the Northern boundary of State Lease No. 20008 to its Northernmost Northwest corner which is also the Northeast corner of State Lease No. 20456 having Coordinates of X = 2,522,233.11 and Y = 277,946.88; thence North 88 degrees 03 minutes 19 seconds West 898.38 feet along the Northern boundary of State Lease No. 20456 to its Northwest corner having Coordinates of X = 2,521,335.24 and Y = 277,916.39; thence North 2,891.50 feet to a point having Coordinates of X = 2,521,335.24 and Y = 280,807.89; thence East 15,814.76 feet to a point having Coordinates of X = 2,537,150.00 and Y = 280,807.89; thence South 8,647.69 feet to a point having Coordinates of X = 2,537,150.00 and Y = 272,160.20; thence West 12,797.19 feet to a point having Coordinates of X = 2,524,352.81 and Y = 272,160.20; thence North 1,606.21 feet to the Southeast corner of State Lease No. 20008 having Coordinates of X = 2,524,352.81 and Y = 273,766.41; thence North 01 degrees 56 minutes 43 seconds West 4,249.99 feet along the Eastern boundary of said State Lease No. 20008 to the point of beginning, containing approximately **1,069 acres**, all as more particularly outlined on a plat on file in the Office of Mineral Resources, Department of Natural Resources. All bearings, distances and coordinates are based on Louisiana Coordinate System of 1927, (North or South Zone), where applicable.

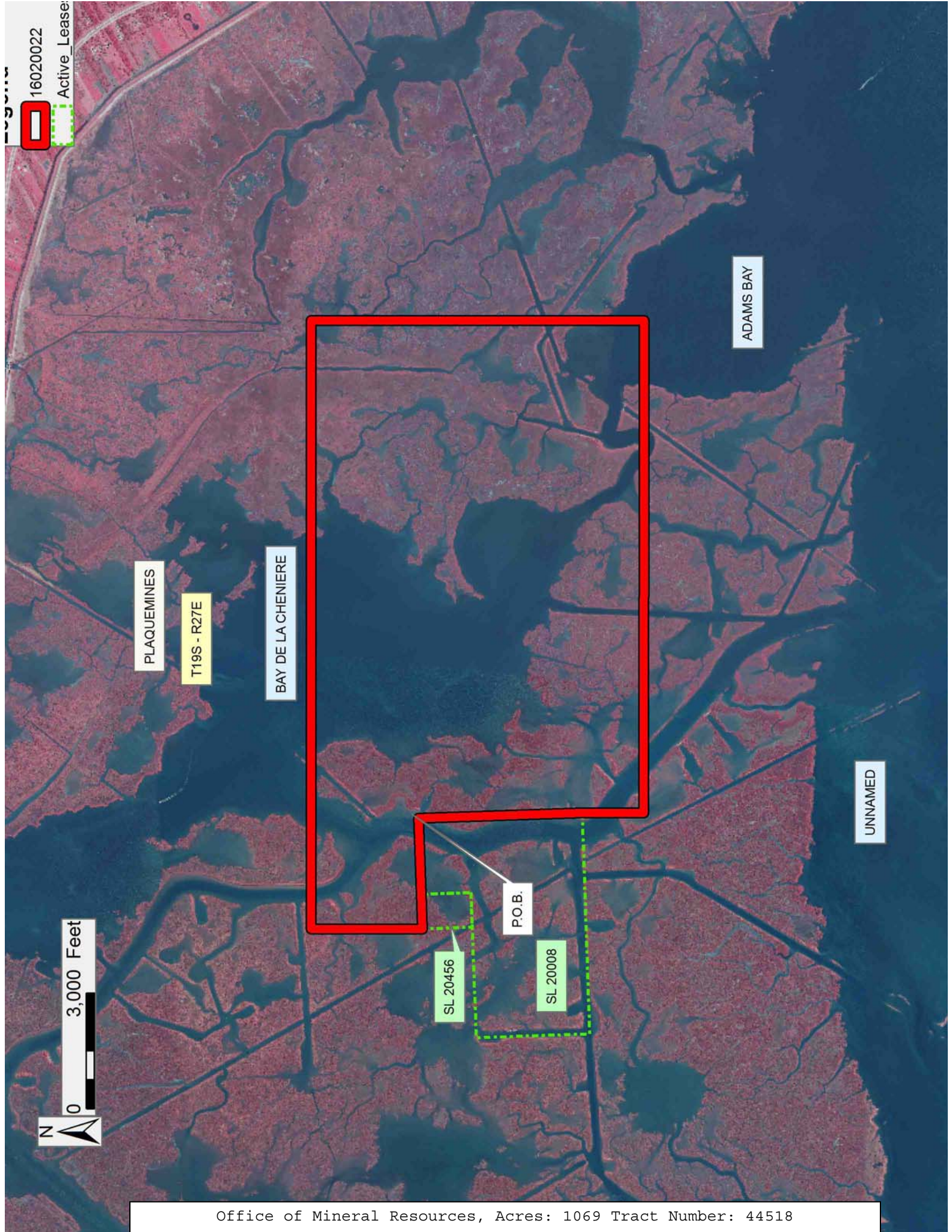
NOTE: The above description of the Tract nominated for the purpose of acquiring a mineral lease or a geophysical agreement has been provided and corrected, where required, exclusively by the nominating party. Any mineral lease or geophysical agreement selected from this Tract and awarded by the Louisiana State Mineral and Energy Board shall be without warranty of any kind, either express, implied or statutory including, but not limited to, title or the implied warranties of merchantability and fitness for a particular purpose.

An error or omission in the nominating party's Tract description may require that a State mineral lease or geophysical agreement be modified, canceled or abrogated due to the existence of conflicting leases, operating agreements, private claims or other future obligations or conditions within the Tract described. In such case, however, the Louisiana State Mineral and Energy Board shall not be obligated to refund any consideration paid by the Lessee prior to such modification, cancellation or abrogation including, but not limited to, bonuses, rentals and royalties.

NOTE: The State of Louisiana does hereby reserve, and this lease shall be subject to, the imprescriptible right of surface use in the nature of a servitude in favor of the Department of Natural Resources, including its Offices and Commissions, for the sole purpose of implementing, constructing, servicing and maintaining approved coastal zone management and/or restoration projects. Utilization of any and all rights derived under this lease by the mineral lessee, its agents, successors or assigns, shall not interfere with nor hinder the reasonable surface use by the Department of Natural Resources, its Offices or Commissions, as herein above reserved.

Applicant: OIL LAND SERVICES, INC.

Bidder	Cash Payment	Price/Acre	Rental	Oil	Gas	Other



16020022

Active Lease

0 3,000 Feet



PLAQUEMINES

T19S - R27E

BAY DE LA CHENIERE

ADAMS BAY

UNNAMED

SL 20456

SL 20008

P.O.B.

TRACT 44519 - Plaquemines Parish, Louisiana

All of the lands now or formerly constituting the beds and bottoms of all water bodies of every nature and description as to which title is vested in the State of Louisiana, together with all islands arising therein and other lands formed by accretion or by reliction, where allowed by law, excepting tax adjudicated lands, and not presently under mineral lease on February 10, 2016, situated in Plaquemines Parish, Louisiana, and more particularly described as follows: Beginning at a point having Coordinates of X = 2,511,102.87 and Y = 276,903.26; thence South 12,871.53 feet to a point having Coordinates of X = 2,511,102.87 and Y = 264,031.73; thence West approximately 9,450.03 feet to the Southeast corner of Tract 2 of State Lease No. 1464, as amended having Coordinates of X = 2,501,652.84 and Y = 264,031.73; thence along the boundaries of said Tract 2 of State Lease No. 1464 the following courses: North 00 degrees 54 minutes 20 seconds West 4,517.12 feet to a point having Coordinates of X = 2,501,581.45 and Y = 268,548.29; thence North 86 degrees 00 minutes 08 seconds East 3,000.00 feet to a point having Coordinates of X = 2,504,574.15 and Y = 268,757.44; thence North 3,151.53 feet to a point having Coordinates of X = 2,504,574.15 and Y = 271,908.97; thence South 89 degrees 15 minutes 00 seconds West 403.27 feet to the Southeast corner of said State Lease No. 2376 having Coordinates of X = 2,504,170.91 and Y = 271,903.69; thence North 00 degrees 45 minutes 00 seconds West 5,000.00 feet along the east boundary of said State Lease No. 2376 to a point having Coordinates of X = 2,504,105.46 and Y = 276,903.26; thence East 6,997.41 feet to the point of beginning, containing approximately **1,685 acres**, all as more particularly outlined on a plat on file in the Office of Mineral Resources, Department of Natural Resources. All bearings, distances and coordinates are based on Louisiana Coordinate System of 1927, (North or South Zone), where applicable.

NOTE: The above description of the Tract nominated for the purpose of acquiring a mineral lease or a geophysical agreement has been provided and corrected, where required, exclusively by the nominating party. Any mineral lease or geophysical agreement selected from this Tract and awarded by the Louisiana State Mineral and Energy Board shall be without warranty of any kind, either express, implied or statutory including, but not limited to, title or the implied warranties of merchantability and fitness for a particular purpose.

An error or omission in the nominating party's Tract description may require that a State mineral lease or geophysical agreement be modified, canceled or abrogated due to the existence of conflicting leases, operating agreements, private claims or other future obligations or conditions within the Tract described. In such case, however, the Louisiana State Mineral and Energy Board shall not be obligated to refund any consideration paid by the Lessee prior to such modification, cancellation or abrogation including, but not limited to, bonuses, rentals and royalties.

NOTE: The State of Louisiana does hereby reserve, and this lease shall be subject to, the imprescriptible right of surface use in the nature of a servitude in favor of the Department of Natural Resources, including its Offices and Commissions, for the sole purpose of implementing, constructing, servicing and maintaining approved coastal zone management and/or restoration projects. Utilization of any and all rights derived under this lease by the mineral lessee, its agents, successors or assigns, shall not interfere with nor hinder the reasonable surface use by the Department of Natural Resources, its Offices or Commissions, as herein above reserved.

Applicant: OIL LAND SERVICES, INC.

Bidder	Cash Payment	Price/Acre	Rental	Oil	Gas	Other

Legend

16020023
Active_Lease:



0 3,000 Feet

PLAQUEMINES

P.O.B.

LAKE WASHINGTON

SL 2376

RATTLESNAKE BAYOU

SL 1464

TRACT 44520 - Plaquemines Parish, Louisiana

All of the lands now or formerly constituting the beds and bottoms of all water bodies of every nature and description as to which title is vested in the State of Louisiana, together with all islands arising therein and other lands formed by accretion or by reliction, where allowed by law, excepting tax adjudicated lands, and not presently under mineral lease on February 10, 2016, situated in Plaquemines Parish, Louisiana, and more particularly described as follows: Beginning at a point having Coordinates of X = 2,511,102.87 and Y = 276,516.49; thence East 7,403.25 feet to the Westernmost Northwest corner of State Lease No. 20008 having Coordinates of X = 2,518,506.12 and Y = 276,516.49; thence along the Westernmost Western boundary of State Lease No. 20008 South 01 degrees 56 minutes 41 seconds East 2,946.92 feet to Southwest corner of State Lease No. 20008 having Coordinates of X = 2,518,606.13 and Y = 273,571.27; thence along the Southern boundary of State Lease No. 20008 North 88 degrees 03 minutes 19 seconds East 5,750.00 feet to the Southeast corner of State Lease No. 20008 having Coordinates of X = 2,524,352.81 and Y = 273,766.41; thence South 1,606.21 feet to a point having Coordinates of X = 2,524,352.81 and Y = 272,160.20; thence West 587.62 feet to the Northeast corner of State Lease No. 1753 having Coordinates of X = 2,523,765.19 and Y = 272,160.20; thence along the Northern boundary of State Lease No. 1753 South 89 degrees 15 minutes 00 seconds West 4,796.88 feet to the Northwest corner of State Lease No. 1753 having Coordinates of X = 2,518,968.73 and Y = 272,097.41; thence along the Western boundary of State Lease No 1753 South 00 degrees 45 minutes 00 seconds East 4,580.32 feet to the Southwest corner of said State Lease No. 1753 having Coordinates of X = 2,519,028.68 and Y = 267,517.49; thence South 3,485.76 feet to a point having Coordinates of X = 2,519,028.68 and Y = 264,031.73; thence West 7,952.81 feet to a point having Coordinates of X = 2,511,102.87 and Y = 264,031.73; thence North 12,484.76 feet to the point of beginning; containing approximately **656 acres**, all as more particularly outlined on a plat on file in the Office of Mineral Resources, Department of Natural Resources. All bearings, distances and coordinates are based on Louisiana Coordinate System of 1927, (North or South Zone), where applicable.

NOTE: The above description of the Tract nominated for the purpose of acquiring a mineral lease or a geophysical agreement has been provided and corrected, where required, exclusively by the nominating party. Any mineral lease or geophysical agreement selected from this Tract and awarded by the Louisiana State Mineral and Energy Board shall be without warranty of any kind, either express, implied or statutory including, but not limited to, title or the implied warranties of merchantability and fitness for a particular purpose.

An error or omission in the nominating party's Tract description may require that a State mineral lease or geophysical agreement be modified, canceled or abrogated due to the existence of conflicting leases, operating agreements, private claims or other future obligations or conditions within the Tract described. In such case, however, the

Louisiana State Mineral and Energy Board shall not be obligated to refund any consideration paid by the Lessee prior to such modification, cancellation or abrogation including, but not limited to, bonuses, rentals and royalties.

NOTE: The State of Louisiana does hereby reserve, and this lease shall be subject to, the imprescriptible right of surface use in the nature of a servitude in favor of the Department of Natural Resources, including its Offices and Commissions, for the sole purpose of implementing, constructing, servicing and maintaining approved coastal zone management and/or restoration projects. Utilization of any and all rights derived under this lease by the mineral lessee, its agents, successors or assigns, shall not interfere with nor hinder the reasonable surface use by the Department of Natural Resources, its Offices or Commissions, as herein above reserved.

Applicant: OIL LAND SERVICES, INC.

Bidder	Cash Payment	Price/Acre	Rental	Oil	Gas	Other

Legend

16020024

Active_Leases

