

**TRACT 44501 - Lasalle Parish, Louisiana**

All of the lands now or formerly constituting the beds and bottoms of all water bodies of every nature and description as to which title is vested in the State of Louisiana, together with all islands arising therein and other lands formed by accretion or by reliction, where allowed by law, excepting tax adjudicated lands, and not presently under mineral lease on February 10, 2016, situated in Lasalle Parish, Louisiana, and more particularly described as follows: Beginning at a point having Coordinates of X = 2,072,304.46 and Y = 364,448.00; thence North 89 degrees 56 minutes 02 seconds West 1,423.52 feet to a point having Coordinates of X = 2,070,880.94 and Y = 364,449.64; thence North 00 degrees 03 minutes 08 seconds West 1,420.19 feet to a point having Coordinates of X = 2,070,879.65 and Y = 365,869.83; thence South 89 degrees 56 minutes 02 seconds East 1,423.52 feet to a point having Coordinates of X = 2,072,303.17 and Y = 365,868.19; thence South 00 degrees 03 minutes 08 seconds East 1,420.19 feet to the point of beginning, (This tract includes only waterbottoms claimed and owned by the state and specifically excludes any land claimed or owned by the LaSalle Parish School Board), containing approximately **2.6 acres**, all as more particularly outlined on a plat on file in the Office of Mineral Resources, Department of Natural Resources. All bearings, distances and coordinates are based on Louisiana Coordinate System of 1927, (North or South Zone), where applicable.

NOTE: The above description of the Tract nominated for the purpose of acquiring a mineral lease or a geophysical agreement has been provided and corrected, where required, exclusively by the nominating party. Any mineral lease or geophysical agreement selected from this Tract and awarded by the Louisiana State Mineral and Energy Board shall be without warranty of any kind, either express, implied or statutory including, but not limited to, title or the implied warranties of merchantability and fitness for a particular purpose.

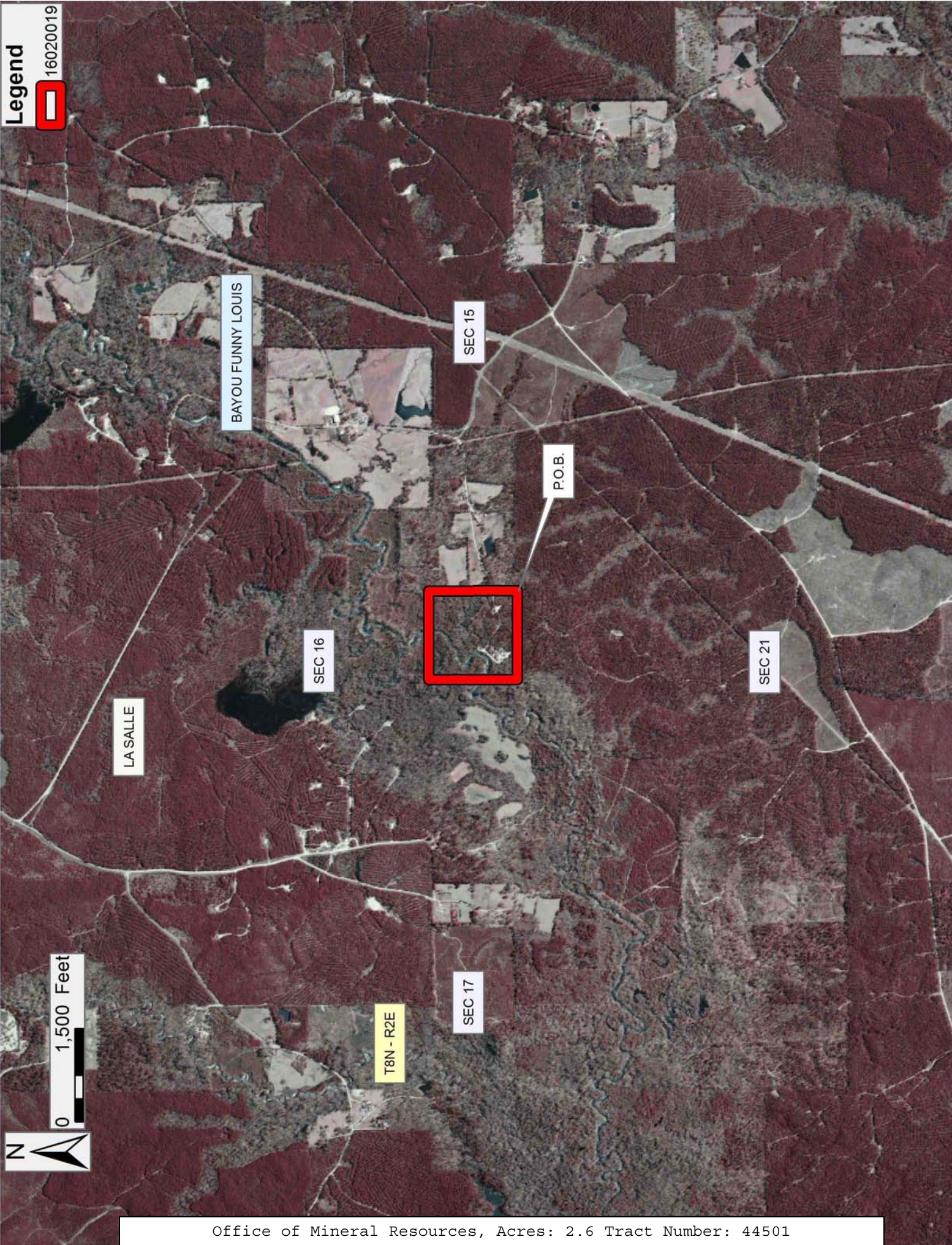
An error or omission in the nominating party's Tract description may require that a State mineral lease or geophysical agreement be modified, canceled or abrogated due to the existence of conflicting leases, operating agreements, private claims or other future obligations or conditions within the Tract described. In such case, however, the Louisiana State Mineral and Energy Board shall not be obligated to refund any consideration paid by the Lessee prior to such modification, cancellation or abrogation including, but not limited to, bonuses, rentals and royalties.

Bidder	Cash Payment	Price/Acre	Rental	Oil	Gas	Other

--	--	--	--	--	--	--

Applicant: CYPRESS ENERGY CORPORATION







**TRACT 44502 - Beauregard Parish, Louisiana**

All of the lands now or formerly constituting the beds and bottoms of all water bodies of every nature and description the title of which vests in the State of Louisiana, together with all islands arising therein and other lands formed by accretion or by reliction, where allowed by law, excepting tax adjudicated lands, and not presently under mineral lease on February 10, 2016, situated in Beauregard Parish, Louisiana, and more particularly described as follows: Beginning at the Southeast corner of State Lease No. 20623, as amended having Coordinates of X = 1,257,333.00 and Y = 676,027.85; thence South 00 degrees 04 minutes 36 seconds East 3,087.31 feet to a point having Coordinates of X = 1,257,337.13 and Y = 672,940.55; thence West 9,697.50 feet to a point having Coordinates of X = 1,247,639.63 and Y = 672,940.55; thence North 3,229.97 feet to a point having Coordinates of X = 1,247,639.63 and Y = 676,170.51; thence East 3,785.81 feet to the Southwest corner of said State Lease No. 20623 having Coordinates of X = 1,251,425.44 and Y = 676,170.51; thence along the boundaries of said State Lease No. 20623 the following courses: South 88 degrees 37 minutes 00 seconds East 1,332.46 feet to a point having Coordinates of X = 1,252,757.52 and Y = 676,138.35 and South 88 degrees 37 minutes 00 seconds East 4,576.81 feet to the point of beginning, containing approximately **30 acres, LESS AND EXCEPT** that portion thereof, if any, located West of the boundary line between the States of Texas and Louisiana as determined by the report of the Special Master and adjudicated by the Supreme Court of the United States in litigation styled **Texas v. Louisiana, et al No. 36 Original**, or as otherwise approved by said court, all as more particularly outlined on a plat on file in the Office of Mineral Resources, Department of Natural Resources. All bearings, distances and coordinates are based on Louisiana Coordinate System of 1927, (North or South Zone), where applicable.

NOTE: The above description of the Tract nominated for the purpose of acquiring a mineral lease or a geophysical agreement has been provided and corrected, where required, exclusively by the nominating party. Any mineral lease or geophysical agreement selected from this Tract and awarded by the Louisiana State Mineral and Energy Board shall be without warranty of any kind, either express, implied or statutory including, but not limited to, title or the implied warranties of merchantability and fitness for a particular purpose.

An error or omission in the nominating party's Tract description may require that a State mineral lease or geophysical agreement be modified, canceled or abrogated due to the existence of conflicting leases, operating agreements, private claims or other future obligations or conditions within the Tract described. In such case, however, the Louisiana State Mineral and Energy Board shall not be obligated to refund any consideration paid by the Lessee prior to such modification, cancellation or abrogation including, but not limited to, bonuses, rentals and royalties.

Applicant: CYPRESS ENERGY CORPORATION

Bidder	Cash Payment	Price/Acre	Rental	Oil	Gas	Other



**Legend**

- 16020016
- Active\_Leases
- Counties

BEAUREGARD

P.O.B.

T6S - R13W

T7S - R13W

SL 20623

SABINE RIVER

0 2,000 Feet





**TRACT 44503 - Beauregard Parish, Louisiana**

All of the lands now or formerly constituting the beds and bottoms of all water bodies of every nature and description the title of which vests in the State of Louisiana, together with all islands arising therein and other lands formed by accretion or by reliction, where allowed by law, excepting tax adjudicated lands, and not presently under mineral lease on February 10, 2016, situated in Beauregard Parish, Louisiana, and more particularly described as follows: Beginning at a point having Coordinates of X = 1,257,337.13 and Y = 672,940.55; thence South 00 degrees 04 minutes 36 seconds East 5,165.57 feet to a point having Coordinates of X = 1,257,344.05 and Y = 667,774.98; thence West 9,704.42 feet to a point having Coordinates of X = 1,247,639.63 and Y = 667,774.98; thence North 5,165.56 feet to a point having Coordinates of X = 1,247,639.63 and Y = 672,940.55; thence East 9,697.50 feet to the point of beginning, containing approximately **35 acres, LESS AND EXCEPT** that portion thereof, if any, located West of the boundary line between the States of Texas and Louisiana as determined by the report of the Special Master and adjudicated by the Supreme Court of the United States in litigation styled **Texas v. Louisiana, et al No. 36 Original**, or as otherwise approved by said court, all as more particularly outlined on a plat on file in the Office of Mineral Resources, Department of Natural Resources. All bearings, distances and coordinates are based on Louisiana Coordinate System of 1927, (North or South Zone), where applicable.

NOTE: The above description of the Tract nominated for the purpose of acquiring a mineral lease or a geophysical agreement has been provided and corrected, where required, exclusively by the nominating party. Any mineral lease or geophysical agreement selected from this Tract and awarded by the Louisiana State Mineral and Energy Board shall be without warranty of any kind, either express, implied or statutory including, but not limited to, title or the implied warranties of merchantability and fitness for a particular purpose.

An error or omission in the nominating party's Tract description may require that a State mineral lease or geophysical agreement be modified, canceled or abrogated due to the existence of conflicting leases, operating agreements, private claims or other future obligations or conditions within the Tract described. In such case, however, the Louisiana State Mineral and Energy Board shall not be obligated to refund any consideration paid by the Lessee prior to such modification, cancellation or abrogation including, but not limited to, bonuses, rentals and royalties.

Applicant: CYPRESS ENERGY CORPORATION

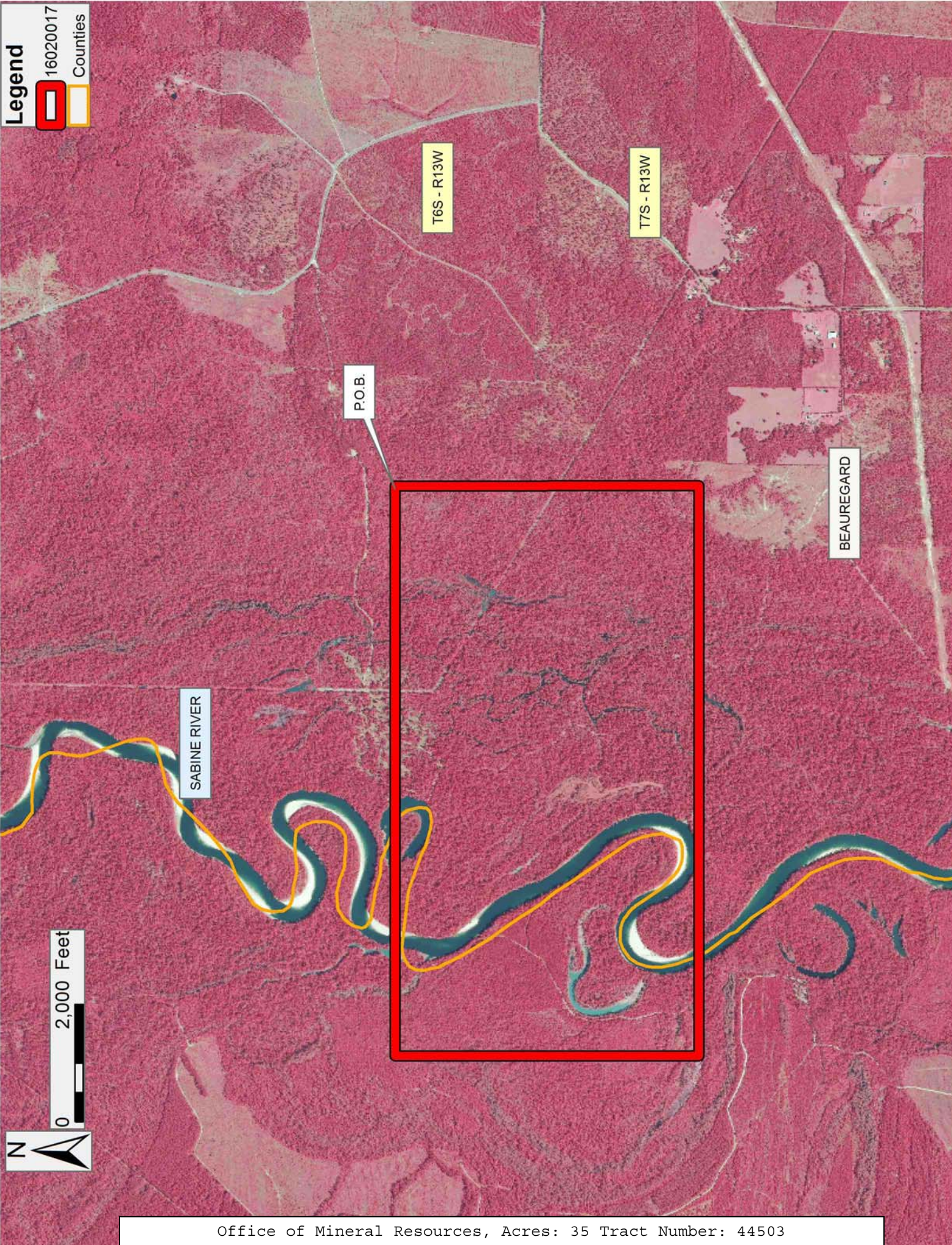
Bidder	Cash Payment	Price/Acre	Rental	Oil	Gas	Other



**Legend**

16020017

Counties





**TRACT 44504 - Beauregard Parish, Louisiana**

All of the lands now or formerly constituting the beds and bottoms of all water bodies of every nature and description the title of which vests in the State of Louisiana, together with all islands arising therein and other lands formed by accretion or by reliction, where allowed by law, excepting tax adjudicated lands, and not presently under mineral lease on February 10, 2016, situated in Beauregard Parish, Louisiana, and more particularly described as follows: Beginning at a point having Coordinates of X = 1,257,344.05 and Y = 667,774.98; thence South 6,894.68 feet to a point having Coordinates of X = 1,257,344.05 and Y = 660,880.31; thence West 9,704.42 feet to a point having Coordinates of X = 1,247,639.63 and Y = 660,880.31; thence North 6,894.68 feet to a point having Coordinates of X = 1,247,639.63 and Y = 667,774.98; thence East 9,704.42 feet to the point of beginning, containing approximately **34 acres, LESS AND EXCEPT** that portion thereof, if any, located West of the boundary line between the States of Texas and Louisiana as determined by the report of the Special Master and adjudicated by the Supreme Court of the United States in litigation styled **Texas v. Louisiana, et al No. 36 Original**, or as otherwise approved by said court, all as more particularly outlined on a plat on file in the Office of Mineral Resources, Department of Natural Resources. All bearings, distances and coordinates are based on Louisiana Coordinate System of 1927, (North or South Zone), where applicable.

NOTE: The above description of the Tract nominated for the purpose of acquiring a mineral lease or a geophysical agreement has been provided and corrected, where required, exclusively by the nominating party. Any mineral lease or geophysical agreement selected from this Tract and awarded by the Louisiana State Mineral and Energy Board shall be without warranty of any kind, either express, implied or statutory including, but not limited to, title or the implied warranties of merchantability and fitness for a particular purpose.

An error or omission in the nominating party's Tract description may require that a State mineral lease or geophysical agreement be modified, canceled or abrogated due to the existence of conflicting leases, operating agreements, private claims or other future obligations or conditions within the Tract described. In such case, however, the Louisiana State Mineral and Energy Board shall not be obligated to refund any consideration paid by the Lessee prior to such modification, cancellation or abrogation including, but not limited to, bonuses, rentals and royalties.

Applicant: CYPRESS ENERGY CORPORATION

Bidder	Cash Payment	Price/Acre	Rental	Oil	Gas	Other



**Legend**  
16020018  
Counties

T6S - R13W

T7S - R13W

P.O.B.

BEAUREGARD

SABINE RIVER

0 2,000 Feet  
N





**TRACT 44505 - Portion of Block 19, Breton Sound Area, Plaquemines Parish, Louisiana**

All of the lands now or formerly constituting the beds and bottoms of all water bodies of every nature and description as to which title is vested in the State of Louisiana, together with all islands arising therein and other lands formed by accretion or by reliction, where allowed by law, excepting tax adjudicated lands, and not presently under mineral lease on February 10, 2016, situated in Plaquemines Parish, Louisiana, and more particularly described as follows: Beginning at a point having Coordinates of X = 2,679,600.00 and Y = 337,080.00; said point being the southeast corner of Block 19, Breton Sound Area; Thence West 7,375.00 feet along the South line of said Block 19, Breton Sound Area, to a point having Coordinates of X = 2,672,225.00 and Y = 337,080.00; Thence North 14,750.00 feet a point having Coordinates of X = 2,672,225.00 and Y = 351,830.00, said point being on the North line of said Block 19, Breton Sound Area; Thence East 7,375.00 feet along said North line of said Block 19, Breton Sound Area, to a point having Coordinates of X = 2,679,600.00 and Y = 351,830.00, said point being the northeast corner of said Block 19, Breton Sound Area; Thence South 14,750.00 feet along the East line of said Block 19, Breton Sound Area, to the Point of Beginning, containing approximately **2,497.27 acres**, all as more particularly outlined on a plat on file in the Office of Mineral Resources, Department of Natural Resources. All bearings, distances and coordinates are based on Louisiana Coordinate System of 1927, (North or South Zone), where applicable.

NOTE: The above description of the Tract nominated for the purpose of acquiring a mineral lease or a geophysical agreement has been provided and corrected, where required, exclusively by the nominating party. Any mineral lease or geophysical agreement selected from this Tract and awarded by the Louisiana State Mineral and Energy Board shall be without warranty of any kind, either express, implied or statutory including, but not limited to, title or the implied warranties of merchantability and fitness for a particular purpose.

An error or omission in the nominating party's Tract description may require that a State mineral lease or geophysical agreement be modified, canceled or abrogated due to the existence of conflicting leases, operating agreements, private claims or other future obligations or conditions within the Tract described. In such case, however, the Louisiana State Mineral and Energy Board shall not be obligated to refund any consideration paid by the Lessee prior to such modification, cancellation or abrogation including, but not limited to, bonuses, rentals and royalties.

NOTE: The State of Louisiana does hereby reserve, and this lease shall be subject to, the imprescriptible right of surface use in the nature of a servitude in favor of the Department of Natural Resources, including its Offices and Commissions, for the sole purpose of implementing, constructing, servicing and maintaining approved coastal zone management

and/or restoration projects. Utilization of any and all rights derived under this lease by the mineral lessee, its agents, successors or assigns, shall not interfere with nor hinder the reasonable surface use by the Department of Natural Resources, its Offices or Commissions, as herein above reserved.

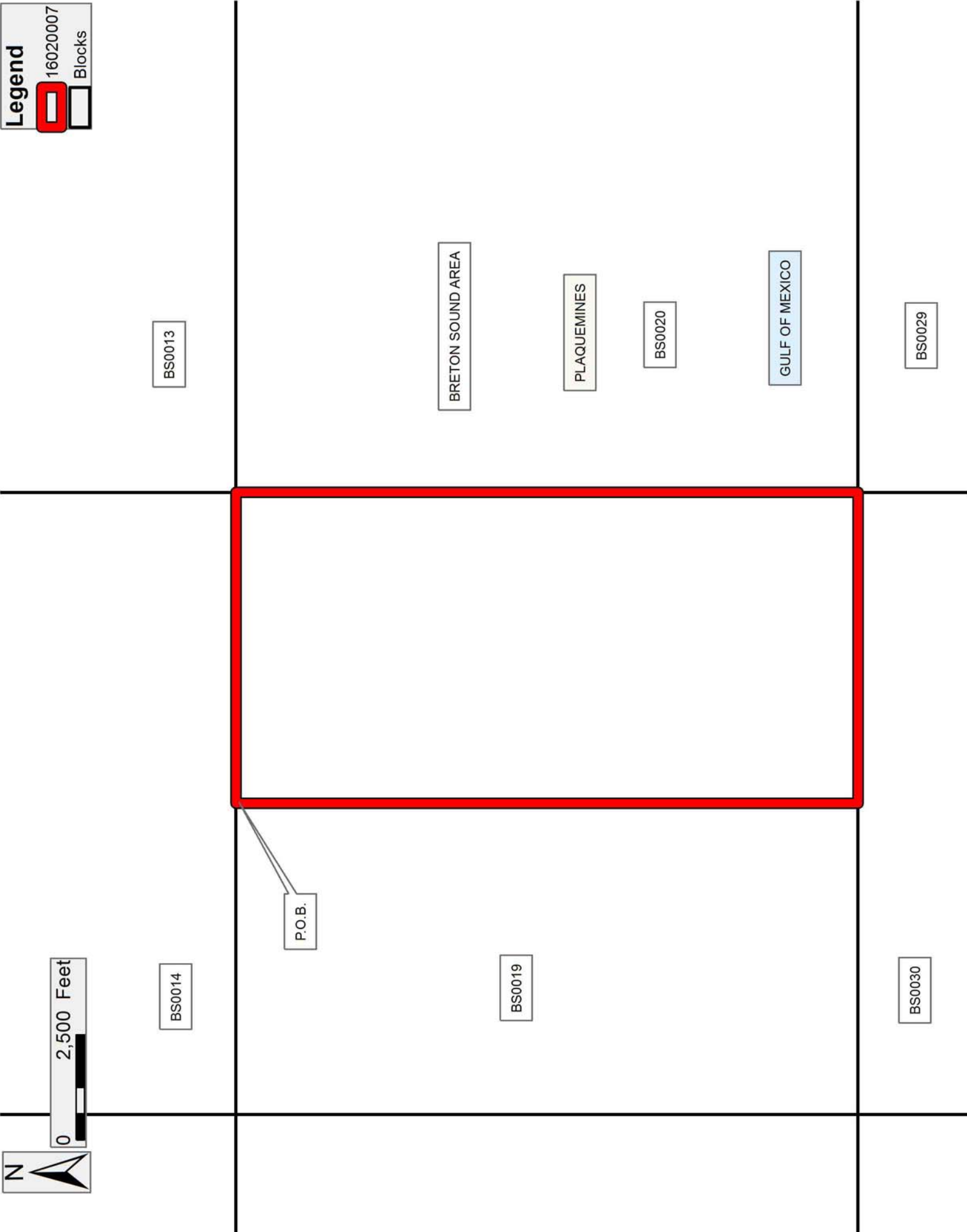
NOTE: This tract is located in an area designated by the Louisiana Legislature or the Wildlife and Fisheries Commission as a Public Oyster Seed Ground, Reservation, or area of Calcasieu or Sabine Lake. Proposed projects occurring in these areas will be evaluated on a case by case basis by Louisiana Department of Wildlife & Fisheries. Modifications to proposed project features including, but not limited to, access routes, well sites, flowlines, and appurtenant structures maybe required by the Louisiana Department of Wildlife and Fisheries. In addition, compensatory mitigation will be required to offset unavoidable habitat impacts.


Applicant: ROBERT A. SCHROEDER, INC.

Bidder	Cash Payment	Price/Acre	Rental	Oil	Gas	Other



**Legend**  
 16020007  
 Blocks



  
0 2,500 Feet

**TRACT 44506 - St. Mary and Terrebonne Parishes, Louisiana**

All of the lands now or formerly constituting the beds and bottoms of all water bodies of every nature and description as to which title is vested in the State of Louisiana, together with all islands arising therein and other lands formed by accretion or by reliction, where allowed by law, excepting tax adjudicated lands, and not presently under mineral lease on February 10, 2016, situated in St. Mary and Terrebonne Parishes, Louisiana, and more particularly described as follows: Beginning at a point having Coordinates of X = 2,017,950.00 and Y = 323,140.00; thence East 7,300.00 feet to a point having Coordinates of X = 2,025,250.00 and Y = 323,140.00; thence South 7,800.00 feet to a point having Coordinates of X = 2,025,250.00 and Y = 315,340.00; thence West 7,300.00 feet to a point having Coordinates of X = 2,017,950.00 and Y = 315,340.00; thence North 7,800.00 feet to the point of beginning, containing approximately **984 acres**, all as more particularly outlined on a plat on file in the Office of Mineral Resources, Department of Natural Resources. All bearings, distances and coordinates are based on Louisiana Coordinate System of 1927, (North or South Zone), where applicable.

NOTE: The above description of the Tract nominated for the purpose of acquiring a mineral lease or a geophysical agreement has been provided and corrected, where required, exclusively by the nominating party. Any mineral lease or geophysical agreement selected from this Tract and awarded by the Louisiana State Mineral and Energy Board shall be without warranty of any kind, either express, implied or statutory including, but not limited to, title or the implied warranties of merchantability and fitness for a particular purpose.

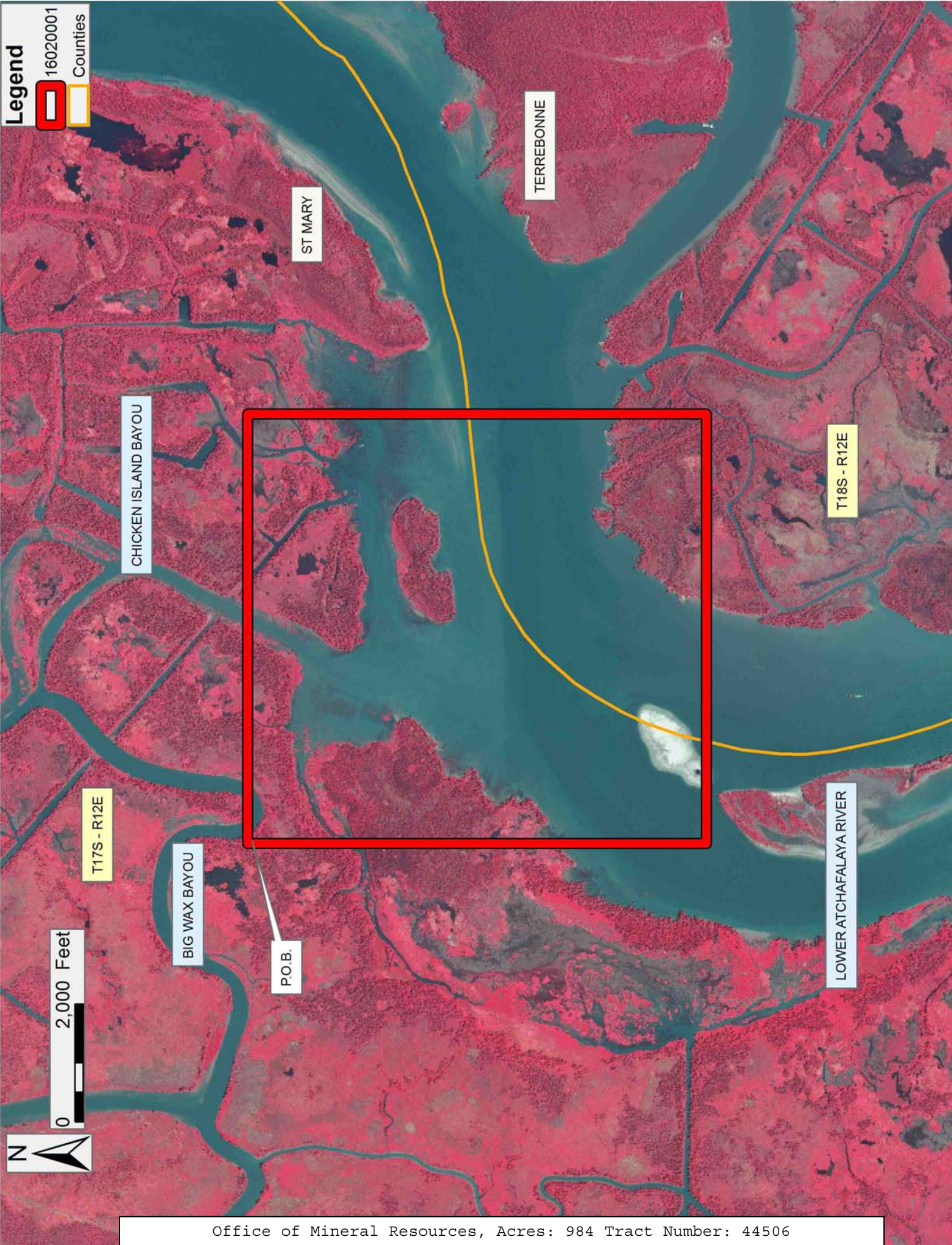
An error or omission in the nominating party's Tract description may require that a State mineral lease or geophysical agreement be modified, canceled or abrogated due to the existence of conflicting leases, operating agreements, private claims or other future obligations or conditions within the Tract described. In such case, however, the Louisiana State Mineral and Energy Board shall not be obligated to refund any consideration paid by the Lessee prior to such modification, cancellation or abrogation including, but not limited to, bonuses, rentals and royalties.

NOTE: The State of Louisiana does hereby reserve, and this lease shall be subject to, the imprescriptible right of surface use in the nature of a servitude in favor of the Department of Natural Resources, including its Offices and Commissions, for the sole purpose of implementing, constructing, servicing and maintaining approved coastal zone management and/or restoration projects. Utilization of any and all rights derived under this lease by the mineral lessee, its agents, successors or assigns, shall not interfere with nor hinder the reasonable surface use by the Department of Natural Resources, its Offices or Commissions, as herein above reserved.

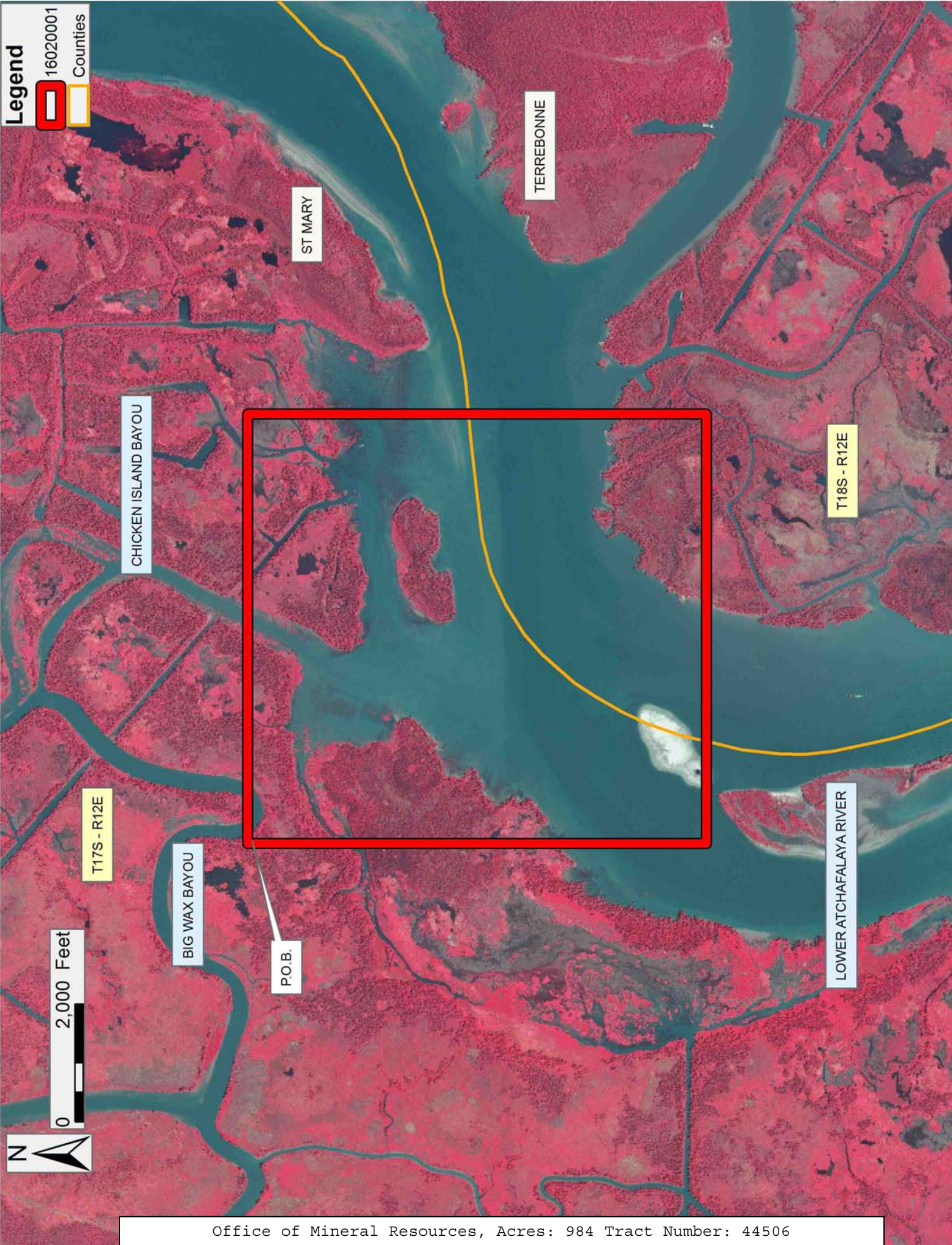
Applicant: AUDUBON ENERGY, LLC

Bidder	Cash Payment	Price/Acre	Rental	Oil	Gas	Other









**Legend**

- 16020001
- Counties

ST MARY

TERREBONNE

CHICKEN ISLAND BAYOU

T18S - R12E

T17S - R12E

BIG WAX BAYOU

P.O.B.

LOWER ATCHAFALAYA RIVER

0 2,000 Feet





**TRACT 44507 - St. Mary and Terrebonne Parishes, Louisiana**

All of the lands now or formerly constituting the beds and bottoms of all water bodies of every nature and description as to which title is vested in the State of Louisiana, together with all islands arising therein and other lands formed by accretion or by reliction, where allowed by law, excepting tax adjudicated lands, and not presently under mineral lease on February 10, 2016, situated in St. Mary and Terrebonne Parishes, Louisiana, and more particularly described as follows: Beginning at a point having Coordinates of X = 2,017,950.00 and Y = 315,340.00; thence East 7,300.00 feet to a point having Coordinates of X = 2,025,250.00 and Y = 315,340.00; thence South 7,800.00 feet to a point having Coordinates of X = 2,025,250.00 and Y = 307,540.00; thence West 7,300.00 feet to a point having Coordinates of X = 2,017,950.00 and Y = 307,540.00; thence North 7,800.00 feet to the point of beginning, containing approximately 607 acres, all as more particularly outlined on a plat on file in the Office of Mineral Resources, Department of Natural Resources. All bearings, distances and Coordinates are based on Louisiana Coordinate System of 1927 (South Zone). Saint Mary Parish AND Terrebonne, Louisiana. Approx. **607 acres**, all as more particularly outlined on a plat on file in the Office of Mineral Resources, Department of Natural Resources. All bearings, distances and coordinates are based on Louisiana Coordinate System of 1927, (North or South Zone), where applicable.

NOTE: The above description of the Tract nominated for the purpose of acquiring a mineral lease or a geophysical agreement has been provided and corrected, where required, exclusively by the nominating party. Any mineral lease or geophysical agreement selected from this Tract and awarded by the Louisiana State Mineral and Energy Board shall be without warranty of any kind, either express, implied or statutory including, but not limited to, title or the implied warranties of merchantability and fitness for a particular purpose.

An error or omission in the nominating party's Tract description may require that a State mineral lease or geophysical agreement be modified, canceled or abrogated due to the existence of conflicting leases, operating agreements, private claims or other future obligations or conditions within the Tract described. In such case, however, the Louisiana State Mineral and Energy Board shall not be obligated to refund any consideration paid by the Lessee prior to such modification, cancellation or abrogation including, but not limited to, bonuses, rentals and royalties.

NOTE: The State of Louisiana does hereby reserve, and this lease shall be subject to, the imprescriptible right of surface use in the nature of a servitude in favor of the Department of Natural Resources, including its Offices and Commissions, for the sole purpose of implementing, constructing, servicing and maintaining approved coastal zone management and/or restoration projects. Utilization of any and all rights derived under this lease by the mineral lessee, its agents, successors or assigns,



shall not interfere with nor hinder the reasonable surface use by the Department of Natural Resources, its Offices or Commissions, as herein above reserved.

Applicant: AUDUBON ENERGY, LLC

Bidder	Cash Payment	Price/Acre	Rental	Oil	Gas	Other

**Legend**  
16020002  
Counties





**TRACT 44508 - Jefferson and Plaquemines Parishes, Louisiana**

All of the lands now or formerly constituting the beds and bottoms of all water bodies of every nature and description as to which title is vested in the State of Louisiana, together with all islands arising therein and other lands formed by accretion or by reliction, where allowed by law, excepting tax adjudicated lands, and not presently under mineral lease on February 10, 2016, situated in Jefferson and Plaquemines Parishes, Louisiana, and more particularly described as follows: Beginning at the Northeast corner of State Lease No. 20512, as amended having Coordinates of X = 2,426,964.30 and Y = 307,526.50; thence East 9,230.33 feet to a point having Coordinates of X = 2,436,194.63 and Y = 307,526.50; thence South 10,923.75 feet to a point on the North boundary of State Lease No. 13407, as amended having Coordinates of X = 2,436,194.63 and Y = 296,602.75; thence along the boundaries of said State Lease No. 13407 the following courses: North 70 degrees 24 minutes 12 seconds West 111.06 feet to a point having Coordinates of X = 2,436,090.00 and Y = 296,640.00, Southwesterly along an arc having a radius of 3,090 feet and a chord bearing of South 70 degrees 46 minutes 49 seconds West 1,154.34 feet to a point having Coordinates of X = 2,435,000.00 and Y = 296,260.00, Southwesterly along an arc having a radius of 1,400 feet and a chord bearing of South 44 degrees 50 minutes 06 seconds West 613.42 feet to a point having Coordinates of X = 2,434,567.50 and Y = 295,825.00, South 30 degrees 11 minutes 16 seconds West 601.59 feet to a point having Coordinates of X = 2,434,265.00 and Y = 295,305.00 and Southwesterly along an arc having a radius of 5,000 feet and a chord bearing of South 49 degrees 29 minutes 57 seconds West 2,163.34 feet to a point having Coordinates of X = 2,432,620.00 and Y = 293,900.00; thence West 1,414.76 feet to a point having Coordinates of X = 2,431,205.25 and Y = 293,900.00; thence North 3,578.12 feet to a point having Coordinates of X = 2,431,205.25 and Y = 297,478.12; thence West 337.32 feet to the Southeast corner of State Lease No. 21345 having Coordinates of X = 2,430,867.93 and Y = 297,478.12; thence along the boundaries of said State Lease No. 21345 the following courses: North 00 degrees 45 minutes 00 seconds West 2,789.62 feet to a point having Coordinates of X = 2,430,831.41 and Y = 300,267.50, and South 89 degrees 06 minutes 56 seconds West 3,755.16 feet to the Southeast corner of Operating Agreement No. 331 having Coordinates of X = 2,427,076.70 and Y = 300,209.54; thence along the boundaries of said Operating Agreement No. 331 the following courses: North 1090.76 feet to a point having Coordinates of X = 2,427,076.70 and Y = 301,300.30 and South 89 degrees 00 minutes 02 seconds West 0.21 feet to the Southeast corner of the South portion of Operating Agreement No. 321 having Coordinates of X = 2,427,076.49 and Y = 301,300.30; thence along the boundaries of said Operating Agreement No. 321 the following courses: North 01 degrees 02 minutes 04 seconds West 1,428.94 feet to a point having Coordinates of X = 2,427,050.69 and Y = 302,729.00, West 2,639.98 feet to a point having Coordinates of X = 2,424,410.71 and Y = 302,729.00, North 01 degrees 01 minutes 01 seconds West 100.00 feet to a point having Coordinates of X = 2,424,408.94 and Y = 302,828.98 and South 89 degrees 34 minutes 22 seconds West 322.25 feet to a point having Coordinates of X =

2,424,086.69 and Y = 302,826.58; thence North 2,004.77 feet to the Southwest corner of the North portion of Operating Agreement No. 321 having Coordinates of X = 2,424,086.69 and Y = 304,831.35; thence along the boundaries of said Operating Agreement No. 321 the following courses: South 44 degrees 57 minutes 22 seconds East 636.93 feet to a point having Coordinates of X = 2,424,536.72 and Y = 304,380.63 and North 88 degrees 59 minutes 21 seconds East 2,484.69 feet to its Southeast corner and the Southwest corner of State Lease No. 19949, as amended having Coordinates of X = 2,427,021.02 and Y = 304,424.46; thence along the boundaries of said State Lease No. 19949 the following courses: North 88 degrees 59 minutes 22 seconds East 1,269.18 feet to a point having Coordinates of X = 2,428,290.00 and Y = 304,446.84, North 2,155.09 feet to a point having Coordinates of X = 2,428,290.00 and Y = 306,601.93 and South 88 degrees 58 minutes 43 seconds West 1,303.67 feet to its Northwest corner and a point on the East boundary of said State Lease No. 20512 having Coordinates of X = 2,426,986.54 and Y = 306,578.69; thence along the boundaries of said State Lease No. 20512 the following courses: North 00 degrees 55 minutes 00 seconds East 321.35 feet to a point having Coordinates of X = 2,426,981.40 and Y = 306,900.00 and North 01 degrees 33 minutes 48 seconds West 626.73 feet to the point of beginning, (This tract includes only waterbottoms claimed and owned by the state and specifically excludes any land which the state may claim or own and to which the mineral rights are vested in the state), containing approximately **1,430 acres**, all as more particularly outlined on a plat on file in the Office of Mineral Resources, Department of Natural Resources. All bearings, distances and coordinates are based on Louisiana Coordinate System of 1927, (North or South Zone), where applicable.

NOTE: The above description of the Tract nominated for the purpose of acquiring a mineral lease or a geophysical agreement has been provided and corrected, where required, exclusively by the nominating party. Any mineral lease or geophysical agreement selected from this Tract and awarded by the Louisiana State Mineral and Energy Board shall be without warranty of any kind, either express, implied or statutory including, but not limited to, title or the implied warranties of merchantability and fitness for a particular purpose.

An error or omission in the nominating party's Tract description may require that a State mineral lease or geophysical agreement be modified, canceled or abrogated due to the existence of conflicting leases, operating agreements, private claims or other future obligations or conditions within the Tract described. In such case, however, the Louisiana State Mineral and Energy Board shall not be obligated to refund any consideration paid by the Lessee prior to such modification, cancellation or abrogation including, but not limited to, bonuses, rentals and royalties.

NOTE: The State of Louisiana does hereby reserve, and this lease shall be subject to, the imprescriptible right of surface use in the nature of a



servitude in favor of the Department of Natural Resources, including its Offices and Commissions, for the sole purpose of implementing, constructing, servicing and maintaining approved coastal zone management and/or restoration projects. Utilization of any and all rights derived under this lease by the mineral lessee, its agents, successors or assigns, shall not interfere with nor hinder the reasonable surface use by the Department of Natural Resources, its Offices or Commissions, as herein above reserved.

Applicant: CYPRESS ENERGY CORPORATION

Bidder	Cash Payment	Price/Acre	Rental	Oil	Gas	Other

**Legend**

- 16020015 (Red outline)
- Active\_Leases (Green dashed outline)
- Counties (Yellow outline)



0 2,200 Feet





**TRACT 44509 - Jefferson Parish, Louisiana**

All of the lands now or formerly constituting the beds and bottoms of all water bodies of every nature and description as to which title is vested in the State of Louisiana, together with all islands arising therein and other lands formed by accretion or by reliction, where allowed by law, excepting tax adjudicated lands, and not presently under mineral lease on February 10, 2016, situated in Jefferson Parish, Louisiana, and more particularly described as follows: Beginning at a point having Coordinates of X = 2,411,786.26 and Y = 306,222.97; thence East 12,295.74 feet to the Southwest corner of State Lease No. 20499 having Coordinates of X = 2,424,082.00 and Y = 306,222.97; thence North 88 degrees 59 minutes 18 seconds East 28.72 feet along the South boundary of said State Lease No. 20499 to the Northwest corner of the North portion of Operating Agreement No. 321 having Coordinates of X = 2,424,110.72 and Y = 306,223.48; thence South 00 degrees 59 minutes 20 seconds West 1,392.33 feet along the West boundary of the North portion of said Operating Agreement No. 321 to its Southwest corner having Coordinates of X = 2,424,086.69 and Y = 304,831.35; thence South 2,004.77 feet to a point on the North boundary of the South portion of Operating Agreement No. 321 having Coordinates of X = 2,424,086.69 and Y = 302,826.58; thence South 89 degrees 34 minutes 22 seconds West 997.36 feet along the North boundary of South portion of said Operating Agreement No. 321 to its Northwest corner and a point on the North boundary of Operating Agreement No. 331 having Coordinates of X = 2,423,089.36 and Y = 302,819.14; thence along the boundaries of said A0331 the following courses: South 89 degrees 34 minutes 22 seconds West 639.08 feet to a point having Coordinates of X = 2,422,450.30 and Y = 302,814.38, South 01 degrees 09 minutes 40 seconds East 1,560.45 feet to a point having Coordinates of X = 2,422,481.92 and Y = 301,254.25 and South 01 degrees 09 minutes 41 seconds East 1,124.70 feet to its Southwest corner and the Northwest corner of State Lease No. 21345 having Coordinates of X = 2,422,504.72 and Y = 300,129.78; thence along the boundaries of said State Lease No. 21345 the following Courses: South 00 degrees 37 minutes 52 seconds East 3,827.83 feet to a point having Coordinates of X = 2,422,546.89 and Y = 296,302.18, South 89 degrees 58 minutes 00 seconds West 1,197.24 feet to a point having Coordinates of X = 2,421,349.64 and Y = 296,301.48 and South 00 degrees 26 minutes 00 seconds East 1,001.51 feet to its Southwest corner and the Northwest corner of State Lease No. 21346 having Coordinates of X = 2,421,357.22 and Y = 295,300.00; thence South 00 degrees 26 minutes 00 seconds East 1,464.14 feet along the West boundary of said State Lease No. 21346 to its Southwest corner to a point having Coordinates of X = 2,421,368.29 and Y = 293,835.90; thence West 9,582.03 feet to a point having Coordinates of X = 2,411,786.26 and Y = 293,835.90; thence North 12,387.07 feet to the point of beginning, (This tract includes only waterbottoms claimed and owned by the state and specifically excludes any land which the state may claim or own and to which the mineral rights are vested in the state), containing approximately **1,696 acres**, all as more particularly outlined on a plat on file in the Office of Mineral Resources, Department of Natural Resources. All bearings,

distances and coordinates are based on Louisiana Coordinate System of 1927, (North or South Zone), where applicable.

NOTE: The above description of the Tract nominated for the purpose of acquiring a mineral lease or a geophysical agreement has been provided and corrected, where required, exclusively by the nominating party. Any mineral lease or geophysical agreement selected from this Tract and awarded by the Louisiana State Mineral and Energy Board shall be without warranty of any kind, either express, implied or statutory including, but not limited to, title or the implied warranties of merchantability and fitness for a particular purpose.

An error or omission in the nominating party's Tract description may require that a State mineral lease or geophysical agreement be modified, canceled or abrogated due to the existence of conflicting leases, operating agreements, private claims or other future obligations or conditions within the Tract described. In such case, however, the Louisiana State Mineral and Energy Board shall not be obligated to refund any consideration paid by the Lessee prior to such modification, cancellation or abrogation including, but not limited to, bonuses, rentals and royalties.

NOTE: The State of Louisiana does hereby reserve, and this lease shall be subject to, the imprescriptible right of surface use in the nature of a servitude in favor of the Department of Natural Resources, including its Offices and Commissions, for the sole purpose of implementing, constructing, servicing and maintaining approved coastal zone management and/or restoration projects. Utilization of any and all rights derived under this lease by the mineral lessee, its agents, successors or assigns, shall not interfere with nor hinder the reasonable surface use by the Department of Natural Resources, its Offices or Commissions, as herein above reserved.

NOTE: This tract is located in an area designated by the Louisiana Legislature or the Wildlife and Fisheries Commission as a Public Oyster Seed Ground, Reservation, or area of Calcasieu or Sabine Lake. Proposed projects occurring in these areas will be evaluated on a case by case basis by Louisiana Department of Wildlife & Fisheries. Modifications to proposed project features including, but not limited to, access routes, well sites, flowlines, and appurtenant structures maybe required by the Louisiana Department of Wildlife and Fisheries. In addition, compensatory mitigation will be required to offset unavoidable habitat impacts.



Applicant: CYPRESS ENERGY CORPORATION

Bidder	Cash Payment	Price/Acre	Rental	Oil	Gas	Other

**Legend**

16020013  
Active\_Leases





**TRACT 44510 - Jefferson Parish, Louisiana**

All of the lands now or formerly constituting the beds and bottoms of all water bodies of every nature and description as to which title is vested in the State of Louisiana, together with all islands arising therein and other lands formed by accretion or by reliction, where allowed by law, excepting tax adjudicated lands, and not presently under mineral lease on February 10, 2016, situated in Jefferson Parish, Louisiana, and more particularly described as follows: Beginning at a point 2,415,553.25 and Y = 293,835.90; thence East 5,815.04 feet to the Southwest corner of State Lease No. 21346 having Coordinates of X = 2,421,368.29 and Y = 293,835.90; thence along the boundaries of said State Lease No. 21346 the following courses: continue East 5,946.13 feet to a point having Coordinates of X = 2,427,314.42 and Y = 293,835.90 and North 00 degrees 12 minutes 00 seconds West 1,464.11 feet to its Northeast corner and a point on the south boundary of State Lease No. 21345 having Coordinates of X = 2,427,309.31 and Y = 295,300.00; thence along the boundaries of said State Lease No. 21345 the following courses: continue North 00 degrees 12 minutes 00 seconds West 1,169.26 feet to a point having Coordinates of X = 2,427,305.23 and Y = 296,469.25, North 89 degrees 27 minutes 59 seconds West 152.93 feet to a point having Coordinates of X = 2,427,152.31 and Y = 296,470.67, North 00 degrees 47 minutes 00 seconds West 969.57 feet to a point having Coordinates of X = 2,427,139.05 and Y = 297,440.16 and North 89 degrees 25 minutes 00 seconds East 3,729.06 feet to a point having Coordinates of X = 2,430,867.93 and Y = 297,478.12; thence East 337.32 feet to a point having Coordinates of X = 2,431,205.25 and Y = 297,478.12; thence South 4,515.89 feet to a point on the North boundary of State Lease No. 16006, as amended having Coordinates of X = 2,431,205.25 and Y = 292,962.24; thence along the boundaries of said State Lease No. 16006 the following courses: North 68 degrees 32 minutes 33 seconds West 2,019.44 feet to a point having Coordinates of X = 2,429,325.78 and Y = 293,700.97, South 09 degrees 48 minutes 09 seconds East 1,251.33 feet to a point having Coordinates of X = 2,429,538.82 and Y = 292,467.91 and Southeasterly along an arc having a radius of 16,210.00 feet and a center at X = 2,413,538.83 and Y = 289,867.09 to its Southwest corner and the Northwest corner of State Lease No. 16007 as amended having Coordinates of X = 2,429,578.49 and Y = 292,210.86; thence along the boundaries of said State Lease No. 16007 the following courses: Southeasterly along an arc having a radius of 16,210.00 feet and a center of X = 2,413,538.83 and Y = 289,867.09 to a point having Coordinates of X = 2,429,667.06 and Y = 291,493.18 and Southeasterly along an arc having a radius of 6,850.00 feet and a center of X = 2,436,504.25 and Y = 291,911.98 to its Southwest corner and the Northwest corner of State Lease No. 15858, as amended having Coordinates of X = 2,429,680.99 and Y = 291,307.30; thence along the boundaries of said State Lease No. 15858 the following courses: Southeasterly along an arc having a radius of 6,850.00 feet and a center of X = 2,436,504.25 and Y = 291,911.98 to a point having Coordinates of X = 2,429,833.48 and Y = 290,355.29, Southeasterly along an arc with a radius of 6,740.00 feet and a center of X = 2,423,269.80 and Y = 288,823.68 to a point having Coordinates of X = 2,429,925.34 and Y =

289,887.38, Northeasterly along an arc with a radius of 1,760.00 feet and a center of X = 2,429,853.93 and Y = 291,645.93 to a point having Coordinates of X = 2,430,917.06 and Y = 290,243.31 and Northeasterly along an arc with a radius of 1,686.00 feet and a center of X = 2,430,000.21 and Y = 291,658.22 to its Southeast corner having Coordinates of X = 2,431,205.25 and Y = 290,479.04; thence South 3,435.55 feet to a point on the North boundary of State Lease No. 21505 having Coordinates of X = 2,431,205.25 and Y = 287,043.49; thence South 65 degrees 17 minutes 51 seconds West 2,443.56 feet to its Western tip having Coordinates of X = 2,428,985.30 and Y = 286,022.31; thence West 13,432.05 feet to a point having Coordinates of X = 2,415,553.25 and Y = 286,022.31; thence North 7,813.59 feet to the point of beginning, (This lease includes only waterbottoms claimed and owned by the state and specifically excludes any land which the state may claim or own and to which the mineral rights are vested in the state), containing approximately **2,025 acres**, all as more particularly outlined on a plat on file in the Office of Mineral Resources, Department of Natural Resources. All bearings, distances and coordinates are based on Louisiana Coordinate System of 1927, (North or South Zone), where applicable.

NOTE: The above description of the Tract nominated for the purpose of acquiring a mineral lease or a geophysical agreement has been provided and corrected, where required, exclusively by the nominating party. Any mineral lease or geophysical agreement selected from this Tract and awarded by the Louisiana State Mineral and Energy Board shall be without warranty of any kind, either express, implied or statutory including, but not limited to, title or the implied warranties of merchantability and fitness for a particular purpose.

An error or omission in the nominating party's Tract description may require that a State mineral lease or geophysical agreement be modified, canceled or abrogated due to the existence of conflicting leases, operating agreements, private claims or other future obligations or conditions within the Tract described. In such case, however, the Louisiana State Mineral and Energy Board shall not be obligated to refund any consideration paid by the Lessee prior to such modification, cancellation or abrogation including, but not limited to, bonuses, rentals and royalties.

NOTE: The State of Louisiana does hereby reserve, and this lease shall be subject to, the imprescriptible right of surface use in the nature of a servitude in favor of the Department of Natural Resources, including its Offices and Commissions, for the sole purpose of implementing, constructing, servicing and maintaining approved coastal zone management and/or restoration projects. Utilization of any and all rights derived under this lease by the mineral lessee, its agents, successors or assigns, shall not interfere with nor hinder the reasonable surface use by the Department of Natural Resources, its Offices or Commissions, as herein above reserved.



Applicant: CYPRESS ENERGY CORPORATION

Bidder	Cash Payment	Price/Acre	Rental	Oil	Gas	Other

**Legend**

- 16020008
- Active\_Leases
- Counties

