

TRACT 44235 - Lafourche Parish, Louisiana

All of the lands now or formerly constituting the beds and bottoms of all water bodies of every nature and description as to which title is vested in the State of Louisiana, together with all islands arising therein and other lands formed by accretion or by reliction, where allowed by law, excepting tax adjudicated lands, and not presently under mineral lease on February 11, 2015, situated in Lafourche Parish, Louisiana, and more particularly described as follows: Beginning at a point having Coordinates of X = 2,307,396.54 and Y = 184,469.00; thence North 4,123.47 feet to a point on the boundary of State Lease No. 3599, as amended, having Coordinates of X = 2,307,396.54 and Y = 188,592.47; thence North 00 degrees 29 minutes 42 seconds West 3,575.66 feet along said boundary of said State Lease No. 3599 to a point on the boundary of State Lease No. 20189, having Coordinates of X = 2,307,365.65 and Y = 192,168.00; thence along said boundary of said State Lease No. 20189 the following courses and distances: East 2,174.35 feet to a point having Coordinates of X = 2,309,540.00 and Y = 192,168.00, and North 44 degrees 02 minutes 10 seconds East 2,429.67 feet to a point on the boundary of State Lease No. 3258, as amended, having Coordinates of X = 2,311,228.89 and Y = 193,914.70; thence along the boundary of said State Lease No. 3258 the following courses and distances: South 00 degrees 26 minutes 59 seconds East 1,399.89 feet to a point having Coordinates of X = 2,311,240.07 and Y = 192,514.86, North 89 degrees 30 minutes 18 seconds East 2,788.87 feet to a point having Coordinates of X = 2,314,027.13 and Y = 192,538.95, North 57 degrees 00 minutes 41 seconds West 534.71 feet to a point having Coordinates of X = 2,313,580.14 and Y = 192,829.09, North 58 degrees 14 minutes 26 seconds East 493.84 feet to a point having Coordinates of X = 2,314,000.03 and Y = 193,089.02, North 49 degrees 23 minutes 55 seconds East 368.80 feet to a point having Coordinates of X = 2,314,280.04 and Y = 193,329.03, North 46 degrees 04 minutes 51 seconds East 374.80 feet to a point having Coordinates of X = 2,314,550.02 and Y = 193,589.01, North 37 degrees 18 minutes 14 seconds East 264.00 feet to a point having Coordinates of X = 2,314,710.01 and Y = 193,799.00, North 31 degrees 49 minutes 39 seconds East 341.30 feet to a point having Coordinates of X = 2,314,890.00 and Y = 194,090.00, North 24 degrees 37 minutes 24 seconds East 264.00 feet to a point having Coordinates of X = 2,315,000.00 and Y = 194,329.98, North 20 degrees 22 minutes 35 seconds East 373.40 feet to a point having Coordinates of X = 2,315,130.02 and Y = 194,679.03, North 15 degrees 06 minutes 34 seconds East 580.77 feet to a point having Coordinates of X = 2,315,281.40 and Y = 195,240.71, North 54 degrees 21 minutes 40 seconds West 530.82 feet to a point having Coordinates of X = 2,314,850.00 and Y = 195,550.00 and North 08 degrees 36 minutes 56 seconds East 492.38 feet to a point having Coordinates of X = 2,314,923.76 and Y = 196,036.82; thence North 89 degrees 30 minutes 18 seconds East 2,812.44 feet to the Southeast corner of State Lease No. 14589, as amended, having Coordinates of X = 2,317,736.10 and Y = 196,061.12; thence South 11,592.12 feet to a point having Coordinates of X = 2,317,736.10 and Y = 184,469.00; thence West 10,339.56 feet to the point of beginning, **LESS AND EXCEPT** any right, title, and interest in lands owned by and not under lease from the State of Louisiana, on behalf of the Lafourche Parish School Board,

situated in Section 16, Township 22 South, Range 21 East, Lafourche Parish, Louisiana, contained within the above described tract, (This lease includes only waterbottoms claimed and owned by the state and specifically excludes any land which the state may claim or own and to which the mineral rights are vested in the state), containing approximately **2,058 acres**, all as more particularly outlined on a plat on file in the Office of Mineral Resources, Department of Natural Resources. All bearings, distances and coordinates are based on Louisiana Coordinate System of 1927, (North or South Zone), where applicable.

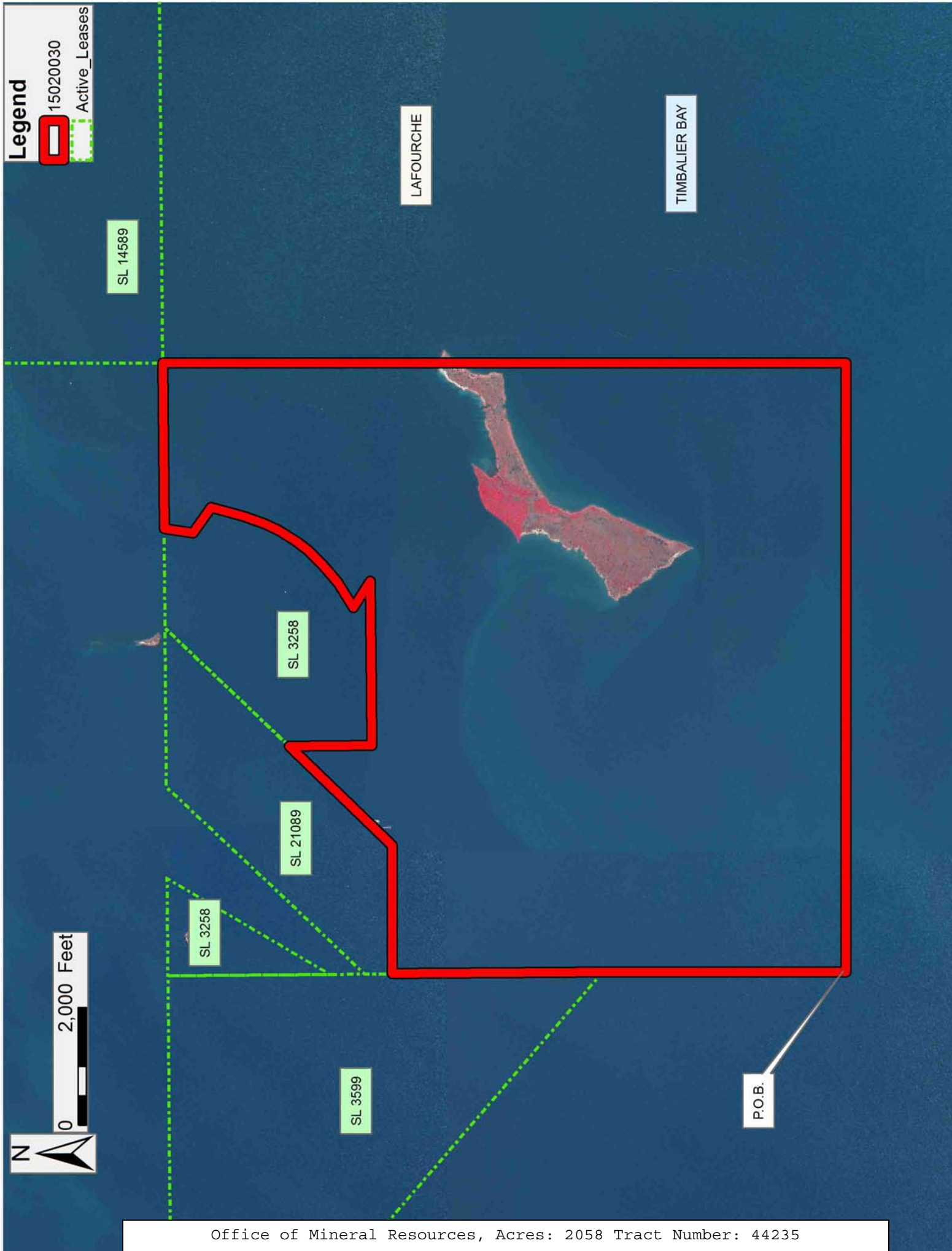
NOTE: The above description of the Tract nominated for the purpose of acquiring a mineral lease or a geophysical agreement has been provided and corrected, where required, exclusively by the nominating party. Any mineral lease or geophysical agreement selected from this Tract and awarded by the Louisiana State Mineral and Energy Board shall be without warranty of any kind, either express, implied or statutory including, but not limited to, title or the implied warranties of merchantability and fitness for a particular purpose.

An error or omission in the nominating party's Tract description may require that a State mineral lease or geophysical agreement be modified, canceled or abrogated due to the existence of conflicting leases, operating agreements, private claims or other future obligations or conditions within the Tract described. In such case, however, the Louisiana State Mineral and Energy Board shall not be obligated to refund any consideration paid by the Lessee prior to such modification, cancellation or abrogation including, but not limited to, bonuses, rentals and royalties.

NOTE: The State of Louisiana does hereby reserve, and this lease shall be subject to, the imprescriptible right of surface use in the nature of a servitude in favor of the Department of Natural Resources, including its Offices and Commissions, for the sole purpose of implementing, constructing, servicing and maintaining approved coastal zone management and/or restoration projects. Utilization of any and all rights derived under this lease by the mineral lessee, its agents, successors or assigns, shall not interfere with nor hinder the reasonable surface use by the Department of Natural Resources, its Offices or Commissions, as herein above reserved.

Applicant: THEOPHILUS OIL, GAS & LAND SERVICES, LLC

Bidder	Cash Payment	Price/ Acre	Rental	Oil	Gas	Other



TRACT 44236 - Lafourche Parish, Louisiana

All of the lands now or formerly constituting the beds and bottoms of all water bodies of every nature and description as to which title is vested in the State of Louisiana, together with all islands arising therein and other lands formed by accretion or by reliction, where allowed by law, excepting tax adjudicated lands, and not presently under mineral lease on February 11, 2015, situated in Lafourche Parish, Louisiana, and more particularly described as follows: All of the newly created waterbottoms situated within Section 16, Township 22 South, Range 21 East, Lafourche Parish, Louisiana, excluding lands owned by the state of Louisiana for the benefit of the Lafourche Parish School Board. The newly created waterbottoms come out of an original 26.55 acres of land more clearly shown on an official Township plat prepared by the Cadastral Engineering Staff of the United States Department of the Interior, Bureau of Land Management, dated June 18, 1959. Said tract contained three parcels: the first being 17.75 acres, the second being 3.59 acres and the third being 5.21 acres. The newly created waterbottoms is identified as all of parcel 1, all of parcel 2 and .21 acres of parcel 3, containing approximately **21.55 acres**, all as more particularly outlined on a plat on file in the Office of Mineral Resources, Department of Natural Resources. All bearings, distances and coordinates are based on Louisiana Coordinate System of 1927, (North or South Zone), where applicable.

NOTE: The above description of the Tract nominated for the purpose of acquiring a mineral lease or a geophysical agreement has been provided and corrected, where required, exclusively by the nominating party. Any mineral lease or geophysical agreement selected from this Tract and awarded by the Louisiana State Mineral and Energy Board shall be without warranty of any kind, either express, implied or statutory including, but not limited to, title or the implied warranties of merchantability and fitness for a particular purpose.

An error or omission in the nominating party's Tract description may require that a State mineral lease or geophysical agreement be modified, canceled or abrogated due to the existence of conflicting leases, operating agreements, private claims or other future obligations or conditions within the Tract described. In such case, however, the Louisiana State Mineral and Energy Board shall not be obligated to refund any consideration paid by the Lessee prior to such modification, cancellation or abrogation including, but not limited to, bonuses, rentals and royalties.

NOTE: The State of Louisiana does hereby reserve, and this lease shall be subject to, the imprescriptible right of surface use in the nature of a servitude in favor of the Department of Natural Resources, including its Offices and Commissions, for the sole purpose of implementing, constructing, servicing and maintaining approved coastal zone management and/or restoration projects. Utilization of any and all rights derived under this lease by the mineral lessee, its agents, successors or assigns,

shall not interfere with nor hinder the reasonable surface use by the Department of Natural Resources, its Offices or Commissions, as herein above reserved.

Applicant: THEOPHILUS OIL, GAS & LAND SERVICES, LLC

Bidder	Cash Payment	Price/ Acre	Rental	Oil	Gas	Other



0 2,000 Feet

LAFOURCHE



Section 16

PARCEL 1

PARCEL 2

PARCEL 3

TIMBALIER BAY

TRACT 44237 - Lafourche and Terrebonne Parishes, Louisiana

All of the lands now or formerly constituting the beds and bottoms of all water bodies of every nature and description as to which title is vested in the State of Louisiana, together with all islands arising therein and other lands formed by accretion or by reliction, where allowed by law, excepting tax adjudicated lands, and not presently under mineral lease on February 11, 2015, situated in Lafourche and Terrebonne Parishes, Louisiana, and more particularly described as follows: Beginning at a point having Coordinates of X = 2,288,021.71 and Y = 189,147.19; thence South 00 degrees 02 minutes 23 seconds West 10,448.63 feet to a point having Coordinates of X = 2,288,014.46 and Y = 178,698.56; thence East 9,042.52 feet to a point having Coordinates of X = 2,297,056.98 and Y = 178,698.56; thence South 4,229.56 feet to a point having Coordinates of X = 2,297,056.98 and Y = 174,469.00; thence West 11,712.34 feet to a point having Coordinates of X = 2,285,344.64 and Y = 174,469.00; thence Northerly approximately 4,858 feet to the Southeast corner of Special Section 16, Township 22 South, Range 20 East, Terrebonne Parish, Louisiana; thence along the boundary of said Special Section 16 the following courses and distances: Northerly approximately 5,234 feet to its Northeast corner, and Westerly approximately 3,982 feet to a point of intersection with a North/South line having a Coordinate of X = 2,281,310.94; thence North approximately 2,540 feet to a point on the boundary of State Lease No. 199, as amended, having Coordinates of X = 2,281,310.94 and Y = 187,061.00; thence North 00 degrees 25 minutes 10 seconds West 2,042.32 feet along the boundary of said State Lease No. 199 to a point having Coordinates of X = 2,281,295.9915 and Y = 189,103.27; thence North 89 degrees 37 minutes 33 seconds East 6,725.86 feet to the point of beginning, **LESS AND EXCEPT** any right, title, and interest in lands owned by and not under lease from the State of Louisiana, Special Section 16, situated in Section 16, Township 22 South, Range 20 East, Terrebonne Parish, Louisiana, contained within the above described tract, containing approximately **2,205 acres**, all as more particularly outlined on a plat on file in the Office of Mineral Resources, Department of Natural Resources. All bearings, distances and coordinates are based on Louisiana Coordinate System of 1927, (North or South Zone), where applicable.

NOTE: The above description of the Tract nominated for the purpose of acquiring a mineral lease or a geophysical agreement has been provided and corrected, where required, exclusively by the nominating party. Any mineral lease or geophysical agreement selected from this Tract and awarded by the Louisiana State Mineral and Energy Board shall be without warranty of any kind, either express, implied or statutory including, but not limited to, title or the implied warranties of merchantability and fitness for a particular purpose.

An error or omission in the nominating party's Tract description may require that a State mineral lease or geophysical agreement be modified, canceled or abrogated due to the existence of conflicting leases, operating agreements, private claims or other future obligations or


conditions within the Tract described. In such case, however, the Louisiana State Mineral and Energy Board shall not be obligated to refund any consideration paid by the Lessee prior to such modification, cancellation or abrogation including, but not limited to, bonuses, rentals and royalties.


NOTE: The State of Louisiana does hereby reserve, and this lease shall be subject to, the imprescriptible right of surface use in the nature of a servitude in favor of the Department of Natural Resources, including its Offices and Commissions, for the sole purpose of implementing, constructing, servicing and maintaining approved coastal zone management and/or restoration projects. Utilization of any and all rights derived under this lease by the mineral lessee, its agents, successors or assigns, shall not interfere with nor hinder the reasonable surface use by the Department of Natural Resources, its Offices or Commissions, as herein above reserved.


Applicant: THEOPHILUS OIL, GAS & LAND SERVICES, LLC

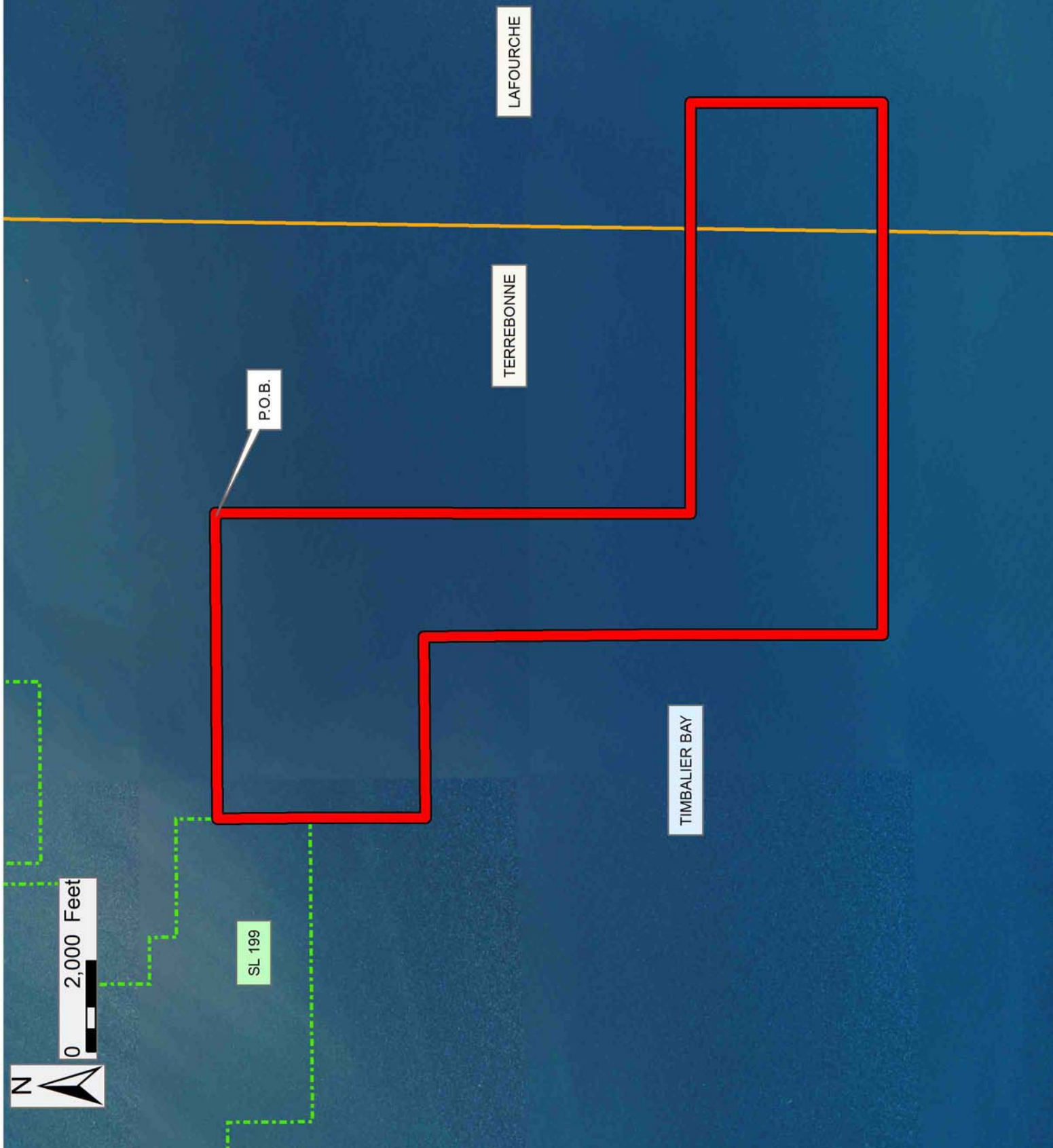
Bidder	Cash Payment	Price/ Acre	Rental	Oil	Gas	Other

Legend

 15020035

 Active_Leases

 Counties



TRACT 44238 - Lafourche and Terrebonne Parishes, Louisiana

All of the lands now or formerly constituting the beds and bottoms of all water bodies of every nature and description as to which title is vested in the State of Louisiana, together with all islands arising therein and other lands formed by accretion or by reliction, where allowed by law, excepting tax adjudicated lands, and not presently under mineral lease on February 11, 2015, situated in Lafourche and Terrebonne Parishes, Louisiana, and more particularly described as follows: Beginning at a point having Coordinates of X = 2,294,204.62 and Y = 187,254.15; thence North 1,893.04 feet to a point having Coordinates of X = 2,294,204.62 and Y = 189,147.19; thence East 2,852.36 feet to a point having Coordinates of X = 2,297,056.98 and Y = 189,147.19; thence South 10,448.63 feet to a point having Coordinates of X = 2,297,056.98 and Y = 178,698.56; thence West 9,042.52 feet to a point having Coordinates of X = 2,288,014.46 and Y = 178,698.56; thence North 00 degrees 02 minutes 23 seconds East 8,555.59 feet to a point on the boundary of Special Section 16 having Coordinates of X = 2,288,020.40 and Y = 187,254.15; thence East 6,184.22 feet to the point of beginning, **LESS AND EXCEPT** any right, title, and interest in lands owned by and not under lease from the State of Louisiana, on behalf of the Terrebonne Parish School Board, situated in Section 16, Township 22 South, Range 20 East, Terrebonne Parish, Louisiana, containing approximately **1,899.42 acres**, all as more particularly outlined on a plat on file in the Office of Mineral Resources, Department of Natural Resources. All bearings, distances and coordinates are based on Louisiana Coordinate System of 1927, (North or South Zone), where applicable.

NOTE: The above description of the Tract nominated for the purpose of acquiring a mineral lease or a geophysical agreement has been provided and corrected, where required, exclusively by the nominating party. Any mineral lease or geophysical agreement selected from this Tract and awarded by the Louisiana State Mineral and Energy Board shall be without warranty of any kind, either express, implied or statutory including, but not limited to, title or the implied warranties of merchantability and fitness for a particular purpose.

An error or omission in the nominating party's Tract description may require that a State mineral lease or geophysical agreement be modified, canceled or abrogated due to the existence of conflicting leases, operating agreements, private claims or other future obligations or conditions within the Tract described. In such case, however, the Louisiana State Mineral and Energy Board shall not be obligated to refund any consideration paid by the Lessee prior to such modification, cancellation or abrogation including, but not limited to, bonuses, rentals and royalties.

NOTE: The State of Louisiana does hereby reserve, and this lease shall be subject to, the imprescriptible right of surface use in the nature of a servitude in favor of the Department of Natural Resources, including its Offices and Commissions, for the sole purpose of implementing,

constructing, servicing and maintaining approved coastal zone management and/or restoration projects. Utilization of any and all rights derived under this lease by the mineral lessee, its agents, successors or assigns, shall not interfere with nor hinder the reasonable surface use by the Department of Natural Resources, its Offices or Commissions, as herein above reserved.

Applicant: THEOPHILUS OIL, GAS & LAND SERVICES, LLC


Bidder	Cash Payment	Price/ Acre	Rental	Oil	Gas	Other

Legend


 15020032

 Counties

N



0 2,000 Feet



P.O.B.



TERREBONNE

LAFOURCHE

TIMBALIER BAY

TRACT 44239 - Terrebonne Parish, Louisiana

All of the lands now or formerly constituting the beds and bottoms of all water bodies of every nature and description as to which title is vested in the State of Louisiana, together with all islands arising therein and other lands formed by accretion or by reliction, where allowed by law, excepting tax adjudicated lands, and not presently under mineral lease on February 11, 2015, situated in Terrebonne Parish, Louisiana, and more particularly described as follows: Beginning at a point on the boundary of State Lease No. 188, as amended, having Coordinates of X = 2,276,250.05 and Y = 175,079.98; thence along the boundary of said State Lease No 188 the following courses and distances: South 89 degrees 35 minutes 00 seconds West 1,972.49 feet to a point having Coordinates of X = 2,274,277.61 and Y = 175,065.64, and South 596.64 feet to a point having Coordinates of X = 2,274,277.61 and Y = 174,469.00; thence West 2,210.61 feet to a point having Coordinates of X = 2,272,067.00 and Y = 174,469.00; thence North 11,027.18 feet to a point on the Southern boundary of State Lease No. 21190, having Coordinates of X = 2,272,067.00 and Y = 185,496.18; thence along the boundary of said State Lease No. 21190 the following courses and distances: South 87 degrees 35 minutes 12 seconds East 512.22 feet to a point having Coordinates of X = 2,272,578.77 and Y = 185,474.61 and North 09 degrees 05 minutes 14 seconds West 1,468.98 feet to a point on the boundary of State Lease No. 199, as amended, having Coordinates of X = 2,272,346.76 and Y = 186,925.15; thence along the boundary of said State Lease No. 199 the following courses and distances: North 09 degrees 04 minutes 08 seconds West 71.03 feet to a point having Coordinates of X = 2,272,335.56 and Y = 186,995.29, North 89 degrees 34 minutes 50 seconds East 1,240.85 feet to a point having Coordinates of X = 2,273,576.38 and Y = 187,004.38, North 06 degrees 12 minutes 15 seconds West 1,392.69 feet to a point having Coordinates of X = 2,273,425.87 and Y = 188,388.91, North 11 degrees 26 minutes 06 seconds West 488.46 feet to a point having Coordinates of X = 2,273,329.03 and Y = 188,867.67, North 89 degrees 34 minutes 50 seconds East 1,285.28 feet to a point having Coordinates of X = 2,274,614.28 and Y = 188,877.08, South 00 degrees 25 minutes 10 seconds East 1,865.06 feet to a point having Coordinates of X = 2,274,627.93 and Y = 187,012.07, and North 89 degrees 34 minutes 49 seconds East 1,622.16 feet to a point having Coordinates of X = 2,276,250.05 and Y = 187,023.95; thence South 11,943.97 feet to the point of beginning, containing approximately **1,212.67 acres**, all as more particularly outlined on a plat on file in the Office of Mineral Resources, Department of Natural Resources. All bearings, distances and coordinates are based on Louisiana Coordinate System of 1927, (North or South Zone), where applicable.

NOTE: The above description of the Tract nominated for the purpose of acquiring a mineral lease or a geophysical agreement has been provided and corrected, where required, exclusively by the nominating party. Any mineral lease or geophysical agreement selected from this Tract and awarded by the Louisiana State Mineral and Energy Board shall be without warranty of any kind, either express, implied or statutory including, but

not limited to, title or the implied warranties of merchantability and fitness for a particular purpose.

An error or omission in the nominating party's Tract description may require that a State mineral lease or geophysical agreement be modified, canceled or abrogated due to the existence of conflicting leases, operating agreements, private claims or other future obligations or conditions within the Tract described. In such case, however, the Louisiana State Mineral and Energy Board shall not be obligated to refund any consideration paid by the Lessee prior to such modification, cancellation or abrogation including, but not limited to, bonuses, rentals and royalties.

NOTE: The State of Louisiana does hereby reserve, and this lease shall be subject to, the imprescriptible right of surface use in the nature of a servitude in favor of the Department of Natural Resources, including its Offices and Commissions, for the sole purpose of implementing, constructing, servicing and maintaining approved coastal zone management and/or restoration projects. Utilization of any and all rights derived under this lease by the mineral lessee, its agents, successors or assigns, shall not interfere with nor hinder the reasonable surface use by the Department of Natural Resources, its Offices or Commissions, as herein above reserved.

Applicant: THEOPHILUS OIL, GAS & LAND SERVICES, LLC

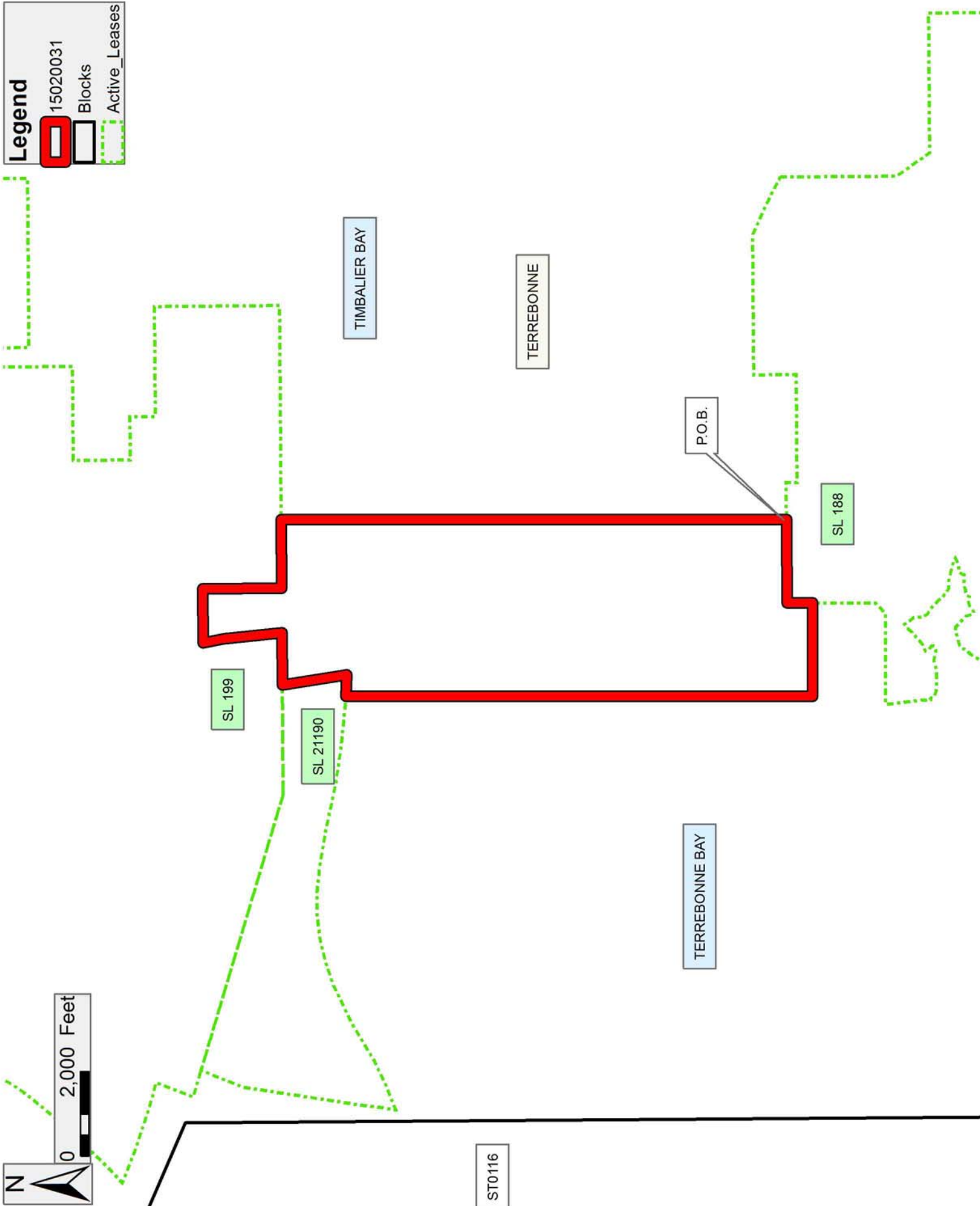
Bidder	Cash Payment	Price/ Acre	Rental	Oil	Gas	Other

Legend

15020031

Blocks

Active_Leases



TRACT 44240 - Terrebonne Parish, Louisiana

All of the lands now or formerly constituting the beds and bottoms of all water bodies of every nature and description as to which title is vested in the State of Louisiana, together with all islands arising therein and other lands formed by accretion or by reliction, where allowed by law, excepting tax adjudicated lands, and not presently under mineral lease on February 11, 2015, situated in Terrebonne Parish, Louisiana, and more particularly described as follows: Beginning at a point on the boundary of State Lease No. 188, as amended, having Coordinates of X = 2,276,250.05 and Y = 175,079.98; thence North 11,943.97 feet to a point on the boundary of State Lease No. 199, as amended, having Coordinates of X = 2,276,250.05 and Y = 187,023.95; thence North 89 degrees 34 minutes 50 seconds East 5,061.03 feet along the boundary of said State Lease No. 199 to a point having Coordinates of X = 2,281,310.94 and Y = 187,061.00; thence South approximately 2,540 feet to a point on the Northern boundary of Special Section 16, Township 22 South, Range 20 East, Terrebonne Parish, having a Coordinate of X = 2,281,310.94; thence along the boundary of said Special Section 16 the following courses and distances: Westerly approximately 1,252 feet to its Northwest corner, thence Southerly approximately 5,250 feet to its Southwest corner, and Easterly approximately 5,219 feet to its Southeast corner; thence Southerly approximately 4,858 feet to a point having Coordinates of X = 2,285,344.64 and Y = 174,469.00; thence West 987.59 feet to a point on the boundary of said State Lease No. 188 having Coordinates of X = 2,284,357.05 and Y = 174,469.00; thence along the boundary of said State Lease No. 188 the following courses and distances: North 00 Degrees 25 Minutes 01 Seconds West 812.61 feet to a point having Coordinates of X = 2,284,351.14 and Y = 175,281.59; Northeasterly along an Arc to the left having a radius of 15,840.00 feet and a center having X = 2,276,860.58 and Y = 161,324.61 to a corner having Coordinates of X = 2,283,109.64 and Y = 175,879.85, South 89 degrees 35 minutes 01 seconds West 3,437.64 feet to a point having Coordinates of X = 2,279,672.10 and Y = 175,854.87, South 00 degrees 24 minutes 58 seconds East 1,006.32 feet to a point having Coordinates of X = 2,279,679.41 and Y = 174,848.58, South 89 degrees 35 minutes 00 seconds West 2,550.00 feet to a point having Coordinates of X = 2,277,129.48 and Y = 174,830.04, North 00 degrees 25 minutes 05 seconds West 256.33 feet to a point having Coordinates of X = 2,277,127.61 and Y = 175,086.36 and South 89 degrees 35 minutes 00 seconds West 877.58 feet to a point having Coordinates of X = 2,276,250.05 and Y = 175,079.98 thence North 11,943.97 feet to the point of beginning, **LESS AND EXCEPT** any right, title, and interest in lands owned by and not under lease from the State of Louisiana, Special Section 16, situated in Section 16, Township 22 South, Range 20 East, Terrebonne Parish, Louisiana, contained within the above described tract, containing approximately **1,587 acres**, all as more particularly outlined on a plat on file in the Office of Mineral Resources, Department of Natural Resources. All bearings, distances and coordinates are based on Louisiana Coordinate System of 1927, (North or South Zone), where applicable.

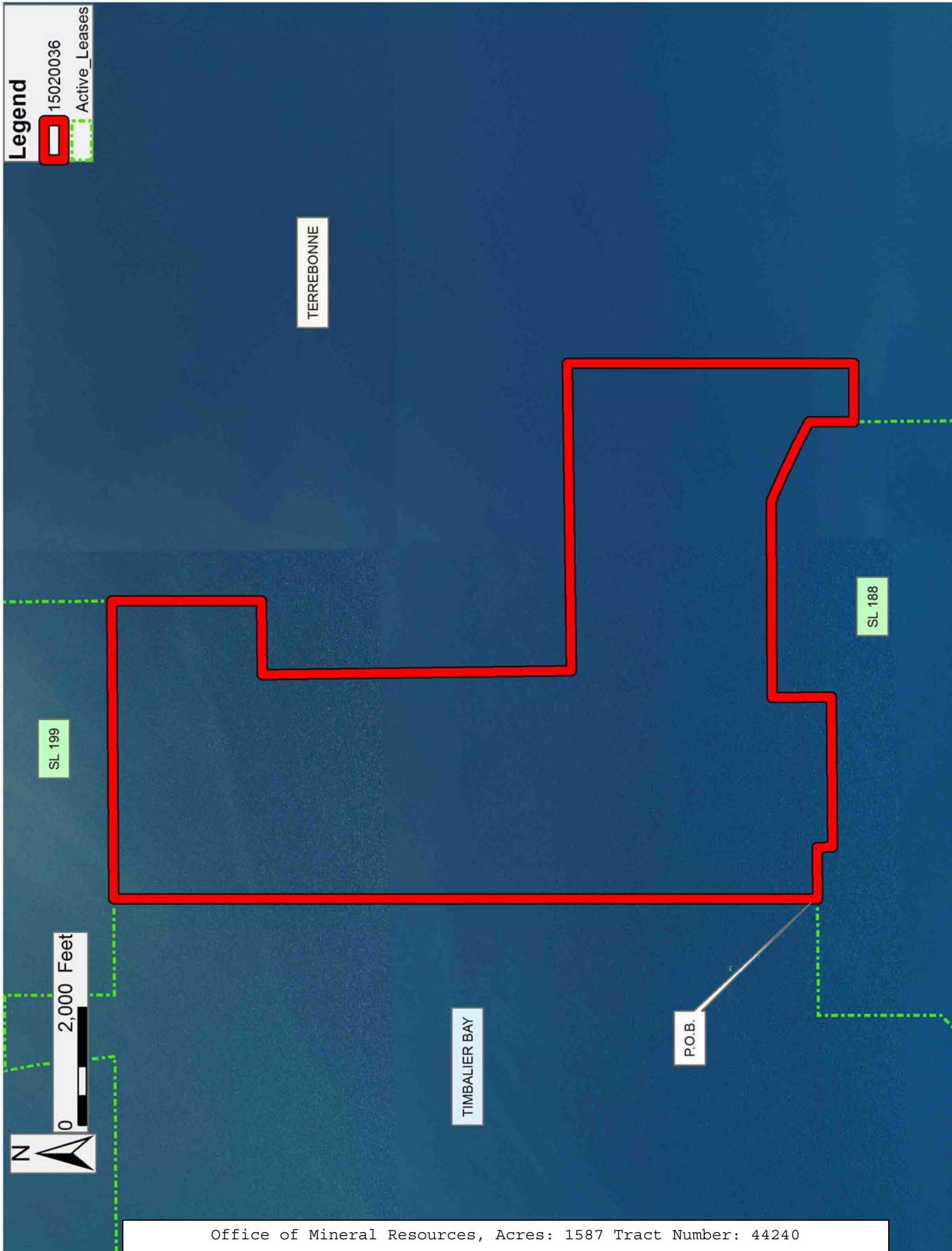
NOTE: The above description of the Tract nominated for the purpose of acquiring a mineral lease or a geophysical agreement has been provided and corrected, where required, exclusively by the nominating party. Any mineral lease or geophysical agreement selected from this Tract and awarded by the Louisiana State Mineral and Energy Board shall be without warranty of any kind, either express, implied or statutory including, but not limited to, title or the implied warranties of merchantability and fitness for a particular purpose.

An error or omission in the nominating party's Tract description may require that a State mineral lease or geophysical agreement be modified, canceled or abrogated due to the existence of conflicting leases, operating agreements, private claims or other future obligations or conditions within the Tract described. In such case, however, the Louisiana State Mineral and Energy Board shall not be obligated to refund any consideration paid by the Lessee prior to such modification, cancellation or abrogation including, but not limited to, bonuses, rentals and royalties.

NOTE: The State of Louisiana does hereby reserve, and this lease shall be subject to, the imprescriptible right of surface use in the nature of a servitude in favor of the Department of Natural Resources, including its Offices and Commissions, for the sole purpose of implementing, constructing, servicing and maintaining approved coastal zone management and/or restoration projects. Utilization of any and all rights derived under this lease by the mineral lessee, its agents, successors or assigns, shall not interfere with nor hinder the reasonable surface use by the Department of Natural Resources, its Offices or Commissions, as herein above reserved.

Applicant: THEOPHILUS OIL, GAS & LAND SERVICES, LLC

Bidder	Cash Payment	Price/Acre	Rental	Oil	Gas	Other



TRACT 44241 - Lafourche Parish, Louisiana

All of the lands now or formerly constituting the beds and bottoms of all water bodies of every nature and description as to which title is vested in the State of Louisiana, together with all islands arising therein and other lands formed by accretion or by reliction, where allowed by law, excepting tax adjudicated lands, and not presently under mineral lease on February 11, 2015, situated in Lafourche Parish, Louisiana, and more particularly described as follows: Beginning at a point having Coordinates of X = 2,297,056.98 and Y = 184,769.00; thence East 10,339.56 feet to a point having Coordinates of X = 2,307,396.54 and Y = 184,769.00; thence South 10,300.00 feet to a point having Coordinates of X = 2,307,396.54 and Y = 174,469.00; thence West 10,339.56 feet to a point having Coordinates of X = 2,297,056.98 and Y = 174,469.00; thence North 10,300.00 feet the point of beginning, containing approximately **2,444.86 acres**, all as more particularly outlined on a plat on file in the Office of Mineral Resources, Department of Natural Resources. All bearings, distances and coordinates are based on Louisiana Coordinate System of 1927, (North or South Zone), where applicable.

NOTE: The above description of the Tract nominated for the purpose of acquiring a mineral lease or a geophysical agreement has been provided and corrected, where required, exclusively by the nominating party. Any mineral lease or geophysical agreement selected from this Tract and awarded by the Louisiana State Mineral and Energy Board shall be without warranty of any kind, either express, implied or statutory including, but not limited to, title or the implied warranties of merchantability and fitness for a particular purpose.

An error or omission in the nominating party's Tract description may require that a State mineral lease or geophysical agreement be modified, canceled or abrogated due to the existence of conflicting leases, operating agreements, private claims or other future obligations or conditions within the Tract described. In such case, however, the Louisiana State Mineral and Energy Board shall not be obligated to refund any consideration paid by the Lessee prior to such modification, cancellation or abrogation including, but not limited to, bonuses, rentals and royalties.

NOTE: The State of Louisiana does hereby reserve, and this lease shall be subject to, the imprescriptible right of surface use in the nature of a servitude in favor of the Department of Natural Resources, including its Offices and Commissions, for the sole purpose of implementing, constructing, servicing and maintaining approved coastal zone management and/or restoration projects. Utilization of any and all rights derived under this lease by the mineral lessee, its agents, successors or assigns, shall not interfere with nor hinder the reasonable surface use by the Department of Natural Resources, its Offices or Commissions, as herein above reserved.

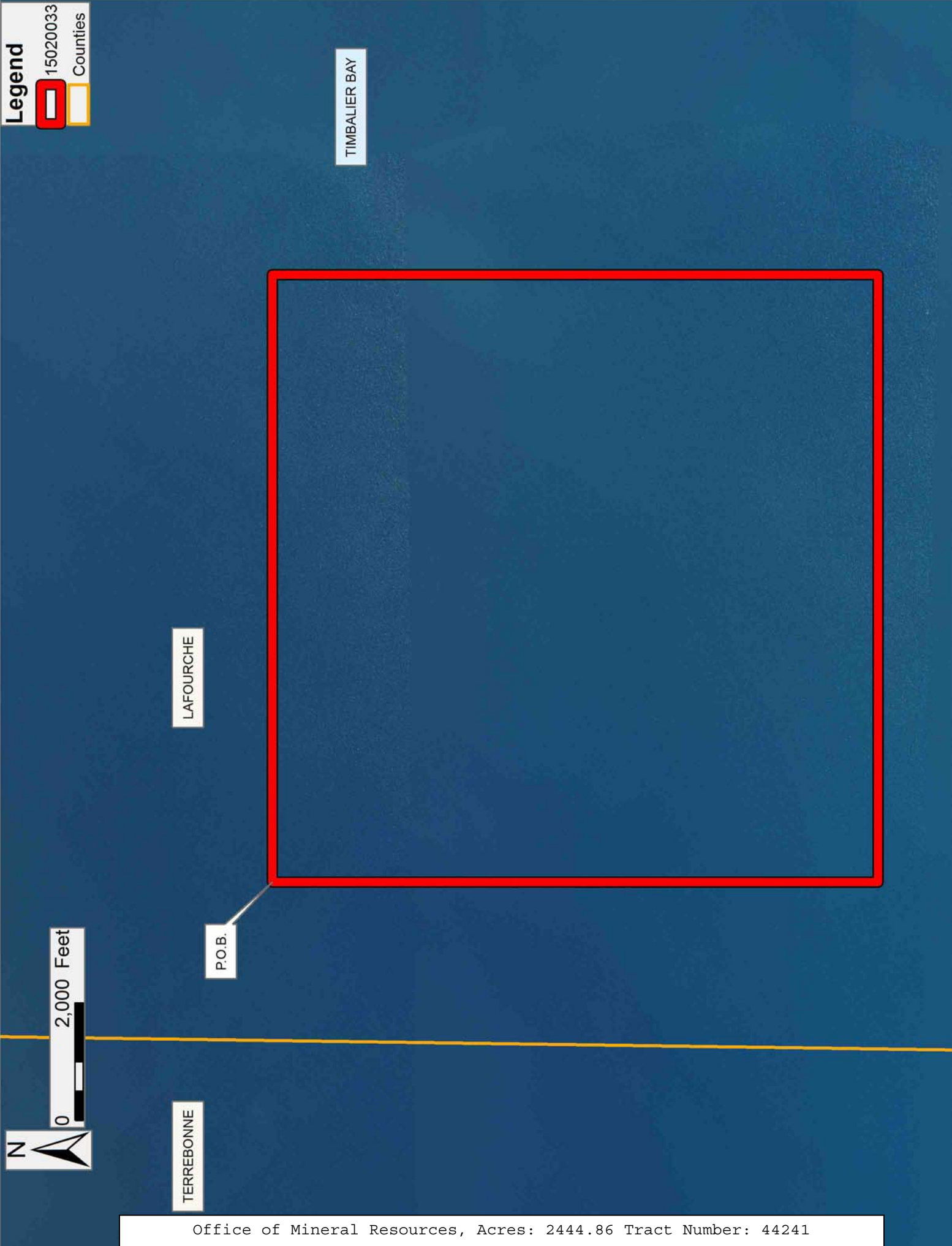
Applicant: THEOPHILUS OIL, GAS & LAND SERVICES, LLC

Bidder	Cash Payment	Price/ Acre	Rental	Oil	Gas	Other

Legend

 15020033

 Counties



TRACT 44242 - Lafourche Parish, Louisiana

All of the lands now or formerly constituting the beds and bottoms of all water bodies of every nature and description as to which title is vested in the State of Louisiana, together with all islands arising therein and other lands formed by accretion or by reliction, where allowed by law, excepting tax adjudicated lands, and not presently under mineral lease on February 11, 2015, situated in Lafourche Parish, Louisiana, and more particularly described as follows: Beginning at a point having Coordinates of X = 2,307,396.54 and Y = 184,469.00; thence East 10,339.56 feet to a point having Coordinates of X = 2,317,736.10 and Y = 184,469.00; thence South 10,000.00 feet to a point having Coordinates of X = 2,317,736.10 and Y = 174,469.00; thence West 10,339.56 feet to a point having Coordinates of X = 2,307,396.54 and Y = 174,469.00; thence North 10,000.00 feet to the point of beginning, (This tract includes only waterbottoms claimed and owned by the state and specifically excludes any land which the state may claim or own and to which the mineral rights are vested in the state), containing approximately **2,374.00 acres**, all as more particularly outlined on a plat on file in the Office of Mineral Resources, Department of Natural Resources. All bearings, distances and coordinates are based on Louisiana Coordinate System of 1927, (North or South Zone), where applicable.

NOTE: The above description of the Tract nominated for the purpose of acquiring a mineral lease or a geophysical agreement has been provided and corrected, where required, exclusively by the nominating party. Any mineral lease or geophysical agreement selected from this Tract and awarded by the Louisiana State Mineral and Energy Board shall be without warranty of any kind, either express, implied or statutory including, but not limited to, title or the implied warranties of merchantability and fitness for a particular purpose.

An error or omission in the nominating party's Tract description may require that a State mineral lease or geophysical agreement be modified, canceled or abrogated due to the existence of conflicting leases, operating agreements, private claims or other future obligations or conditions within the Tract described. In such case, however, the Louisiana State Mineral and Energy Board shall not be obligated to refund any consideration paid by the Lessee prior to such modification, cancellation or abrogation including, but not limited to, bonuses, rentals and royalties.

NOTE: The State of Louisiana does hereby reserve, and this lease shall be subject to, the imprescriptible right of surface use in the nature of a servitude in favor of the Department of Natural Resources, including its Offices and Commissions, for the sole purpose of implementing, constructing, servicing and maintaining approved coastal zone management and/or restoration projects. Utilization of any and all rights derived under this lease by the mineral lessee, its agents, successors or assigns, shall not interfere with nor hinder the reasonable surface use by the

Department of Natural Resources, its Offices or Commissions, as herein above reserved.

Applicant: THEOPHILUS OIL, GAS & LAND SERVICES, LLC

Bidder	Cash Payment	Price/ Acre	Rental	Oil	Gas	Other



0 2,000 Feet

Legend



15020034

LAFOURCHE

P.O.B.

TIMBALIER BAY

TRACT 44243 - Terrebonne Parish, Louisiana

All of the lands now or formerly constituting the beds and bottoms of all water bodies of every nature and description as to which title is vested in the State of Louisiana, together with all islands arising therein and other lands formed by accretion or by reliction, where allowed by law, excepting tax adjudicated lands, and not presently under mineral lease on February 11, 2015, situated in Terrebonne Parish, Louisiana, and more particularly described as follows: A certain tract or parcel of land designated as a Special Section 16, located in Section 16, Township 22 South, Range 20 East, Terrebonne Parish, Louisiana, containing approximately **614 acres**, all as more particularly outlined on a plat on file in the Office of Mineral Resources, Department of Natural Resources. All bearings, distances and coordinates are based on Louisiana Coordinate System of 1927, (North or South Zone), where applicable.

NOTE: The above description of the Tract nominated for the purpose of acquiring a mineral lease or a geophysical agreement has been provided and corrected, where required, exclusively by the nominating party. Any mineral lease or geophysical agreement selected from this Tract and awarded by the Louisiana State Mineral and Energy Board shall be without warranty of any kind, either express, implied or statutory including, but not limited to, title or the implied warranties of merchantability and fitness for a particular purpose.

An error or omission in the nominating party's Tract description may require that a State mineral lease or geophysical agreement be modified, canceled or abrogated due to the existence of conflicting leases, operating agreements, private claims or other future obligations or conditions within the Tract described. In such case, however, the Louisiana State Mineral and Energy Board shall not be obligated to refund any consideration paid by the Lessee prior to such modification, cancellation or abrogation including, but not limited to, bonuses, rentals and royalties.

NOTE: The State of Louisiana does hereby reserve, and this lease shall be subject to, the imprescriptible right of surface use in the nature of a servitude in favor of the Department of Natural Resources, including its Offices and Commissions, for the sole purpose of implementing, constructing, servicing and maintaining approved coastal zone management and/or restoration projects. Utilization of any and all rights derived under this lease by the mineral lessee, its agents, successors or assigns, shall not interfere with nor hinder the reasonable surface use by the Department of Natural Resources, its Offices or Commissions, as herein above reserved.

Applicant: THEOPHILUS OIL, GAS & LAND SERVICES, LLC

Bidder	Cash Payment	Price/ Acre	Rental	Oil	Gas	Other



0 2,000 Feet

Legend



15020037

TERREBONNE

TIMBALIER BAY

