

TRACT 44225 - Lafourche Parish, Louisiana

All of the lands now or formerly constituting the beds and bottoms of all water bodies of every nature and description as to which title is vested in the State of Louisiana, together with all islands arising therein and other lands formed by accretion or by reliction, where allowed by law, excepting tax adjudicated lands, and not presently under mineral lease on February 11, 2015, situated in Lafourche Parish, Louisiana, and more particularly described as follows: Beginning at a point having Coordinates of X = 2,303,305.48 and Y = 219,058.00; thence North 89 degrees 59 minutes 14 seconds East 4,864.14 feet to a point on the Northern portion of State Lease No. 1450, as amended, having Coordinates of X = 2,308,169.62 and Y = 219,059.07; thence along said boundary of said State Lease No. 1450 the following courses and distances: along a curve to the left having a radius of 3,475.00 feet to a point having Coordinates of X = 2,308,560.01 and Y = 218,180.00, South 56 degrees 10 minutes 58 seconds East 3,290.12 feet to a point having Coordinates of X = 2,311,293.50 and Y = 216,348.90, South 24 degrees 50 minutes 19 seconds West 1,216.46 feet to a point having Coordinates of X = 2,310,782.51 and Y = 215,244.97, and North 82 degrees 33 minutes 22 seconds East 6,950.97 feet to a corner on a Northern portion of State Lease No. 1451, as amended, having Coordinates of X = 2,317,674.90 and Y = 216,145.51; thence North 82 degrees 33 minutes 22 seconds East 28.85 feet having Coordinates of X = 2,317,703.51 and Y = 216,149.25; thence South 3,315.77 feet to a point on the boundary of a Southern portion of State Lease No. 1450, as amended, having Coordinates of X = 2,317,703.51 and Y = 212,833.48; thence along said boundary of said State Lease No. 1450 the following courses and distances: South 73 degrees 43 minutes 35 seconds West 1,555.61 feet to a point having Coordinates of X = 2,316,210.23 and Y = 212,397.56, South 00 degrees 29 minutes 42 seconds East approximately 2,076 feet to a point on its Southern tip, thence Northeasterly along the Northernmost portion of said Tract 2 approximately 2,539 feet to a point being its Southeast corner, said point also being a point on the Northernmost portion of Tract 2 of State Lease No. 1451, as amended; thence South 00 degrees 29 minutes 42 seconds East approximately 1,517 feet to the Northern corner of the Southeastern portion of said Tract 2 of State Lease No. 1450; thence Southwesterly approximately 2,933 feet along the Southeastern portion of said Tract 2 of State Lease No. 1450 to its Southwest corner, said point also being a point on the Northern boundary of State Lease No. 1480, as amended; thence Southwesterly and Northerly along the boundary of said State Lease No. 1480 to a point being the Southeast corner of the Western portion of said Tract 2 of State Lease No. 1450; thence along the boundary of the Western portion of said Tract 2 of State Lease No. 1450 the following: Northerly approximately 831 feet to its Northeast corner, South 89 degrees 30 minutes 18 seconds West approximately 5,041 feet to a point being its Northwest corner having Coordinates of X = 2,311,049.54 and Y = 209,823.98, and South 01 degrees 11 minutes 08 seconds East 820.17 feet to a point on a portion of said State Lease No. 1480 having Coordinates of X = 2,311,066.51 and Y = 209,003.99; thence South 89 degrees 30 minutes 18 seconds West 5,095.22 feet to a point having Coordinates of X = 2,305,971.46 and Y = 208,959.96; thence West 468.42 feet to a point having

Coordinates of X = 2,305,503.06 and Y = 208,959.96; thence North 4,069.30 feet to a point on the boundary of State Lease No. 21225, having Coordinates of X = 2,305,503.06 and Y = 213,029.26; thence along the boundary of said State Lease No. 21225 the following courses and distances: North 54 degrees 14 minutes 08 seconds East 3,280.30 feet to a point having Coordinates of X = 2,308,164.78 and Y = 214,946.44, North 52 degrees 15 minutes 54 seconds West 3,411.22 feet to a point having Coordinates of X = 2,305,467.02 and Y = 217,034.14, North 58 degrees 24 minutes 34 seconds West 372.53 feet to a point having Coordinates of X = 2,305,149.69 and Y = 217,229.29, South 56 degrees 07 minutes 00 seconds West 941.32 feet to a point having Coordinates of X = 2,304,368.23 and Y = 216,704.50, and South 44 degrees 40 minutes 14 seconds West 401.19 feet to a point on the boundary of State Lease No. 21147, having Coordinates of X = 2,304,086.18 and Y = 216,419.19; thence South 44 degrees 40 minutes 13 seconds West 1,110.49 feet along the boundary of said State Lease No. 21147 to a point having Coordinates of X = 2,303,305.48 and Y = 215,629.45; thence North 3,428.55 feet to the point of beginning, containing approximately **1,941 acres**, all as more particularly outlined on a plat on file in the Office of Mineral Resources, Department of Natural Resources. All bearings, distances and coordinates are based on Louisiana Coordinate System of 1927, (North or South Zone), where applicable.

NOTE: The above description of the Tract nominated for the purpose of acquiring a mineral lease or a geophysical agreement has been provided and corrected, where required, exclusively by the nominating party. Any mineral lease or geophysical agreement selected from this Tract and awarded by the Louisiana State Mineral and Energy Board shall be without warranty of any kind, either express, implied or statutory including, but not limited to, title or the implied warranties of merchantability and fitness for a particular purpose.

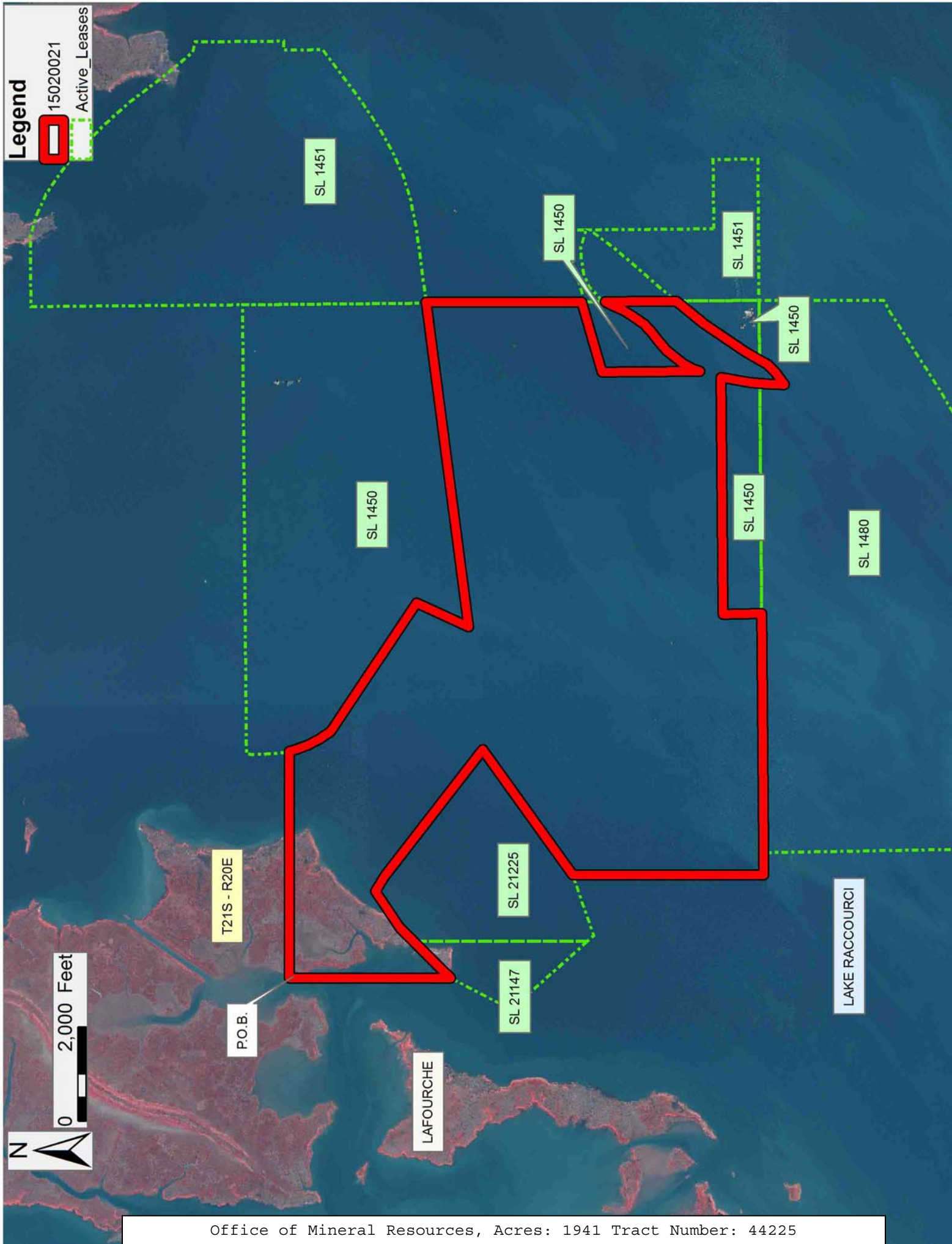
An error or omission in the nominating party's Tract description may require that a State mineral lease or geophysical agreement be modified, canceled or abrogated due to the existence of conflicting leases, operating agreements, private claims or other future obligations or conditions within the Tract described. In such case, however, the Louisiana State Mineral and Energy Board shall not be obligated to refund any consideration paid by the Lessee prior to such modification, cancellation or abrogation including, but not limited to, bonuses, rentals and royalties.

NOTE: The State of Louisiana does hereby reserve, and this lease shall be subject to, the imprescriptible right of surface use in the nature of a servitude in favor of the Department of Natural Resources, including its Offices and Commissions, for the sole purpose of implementing, constructing, servicing and maintaining approved coastal zone management and/or restoration projects. Utilization of any and all rights derived under this lease by the mineral lessee, its agents, successors or assigns, shall not interfere with nor hinder the reasonable surface use by the

Department of Natural Resources, its Offices or Commissions, as herein above reserved.

Applicant: THEOPHILUS OIL, GAS & LAND SERVICES, LLC

Bidder	Cash Payment	Price/ Acre	Rental	Oil	Gas	Other



TRACT 44226 - Terrebonne Parish, Louisiana

All of the lands now or formerly constituting the beds and bottoms of all water bodies of every nature and description as to which title is vested in the State of Louisiana, together with all islands arising therein and other lands formed by accretion or by reliction, where allowed by law, excepting tax adjudicated lands, and not presently under mineral lease on February 11, 2015, situated in Terrebonne Parish, Louisiana, and more particularly described as follows: Beginning at a point having Coordinates of X = 2,272,067.00 and Y = 219,058.00; thence East 7,429.00 feet to a point having Coordinates of X = 2,279,496.00 and Y = 219,058.00; thence South 12,054.23 feet to a point on the boundary of State Lease No. 20946, having Coordinates of X = 2,279,496.00 and Y = 207,003.78; thence along the boundary of said State Lease No. 20946 the following courses and distances: North 60 degrees 01 minutes 46 seconds West 3,079.18 feet to a point having Coordinates of X = 2,276,828.56 and Y = 208,542.00; West 432.97 feet to a point having Coordinates of X = 2,276,395.59 and Y = 208,542.00; South 24 degrees 53 minutes 29 seconds West 2,125.44 feet to a point having Coordinates of X = 2,275,501.00 and Y = 206,614.00 and South 34 degrees 01 minutes 36 seconds East 3,338.60 feet to its Southwest corner, also being a point on the Northern boundary of State Lease No. 199, as amended, having Coordinates of X = 2,277,369.21 and Y = 203,847.05; thence along the boundary of said State Lease No. 199 the following courses and distances: South 89 degrees 34 minutes 50 seconds West 2,121.97 feet to a point having Coordinates of X = 2,275,247.30 and Y = 203,831.52; South 00 degrees 25 minutes 12 seconds East 466.50 feet to a point having Coordinates of X = 2,275,250.72 and Y = 203,365.03; South 89 degrees 34 minutes 49 seconds West 742.49 feet to a point having Coordinates of X = 2,274,508.25 and Y = 203,359.59; North 00 degrees 25 minutes 10 seconds West 3,073.24 feet to a point having Coordinates of X = 2,274,485.75 and Y = 206,432.75; and South 89 degrees 34 minutes 50 seconds West 2,418.82 feet to a point having Coordinates of X = 2,272,067.00 and Y = 206,415.04; thence North 12,642.96 feet to the point of beginning, containing approximately **2,154.82 acres**, all as more particularly outlined on a plat on file in the Office of Mineral Resources, Department of Natural Resources. All bearings, distances and coordinates are based on Louisiana Coordinate System of 1927, (North or South Zone), where applicable.

NOTE: The above description of the Tract nominated for the purpose of acquiring a mineral lease or a geophysical agreement has been provided and corrected, where required, exclusively by the nominating party. Any mineral lease or geophysical agreement selected from this Tract and awarded by the Louisiana State Mineral and Energy Board shall be without warranty of any kind, either express, implied or statutory including, but not limited to, title or the implied warranties of merchantability and fitness for a particular purpose.

An error or omission in the nominating party's Tract description may require that a State mineral lease or geophysical agreement be modified,

canceled or abrogated due to the existence of conflicting leases, operating agreements, private claims or other future obligations or conditions within the Tract described. In such case, however, the Louisiana State Mineral and Energy Board shall not be obligated to refund any consideration paid by the Lessee prior to such modification, cancellation or abrogation including, but not limited to, bonuses, rentals and royalties.

NOTE: The State of Louisiana does hereby reserve, and this lease shall be subject to, the imprescriptible right of surface use in the nature of a servitude in favor of the Department of Natural Resources, including its Offices and Commissions, for the sole purpose of implementing, constructing, servicing and maintaining approved coastal zone management and/or restoration projects. Utilization of any and all rights derived under this lease by the mineral lessee, its agents, successors or assigns, shall not interfere with nor hinder the reasonable surface use by the Department of Natural Resources, its Offices or Commissions, as herein above reserved.

Applicant: THEOPHILUS OIL, GAS & LAND SERVICES, LLC

Bidder	Cash Payment	Price/ Acre	Rental	Oil	Gas	Other



0 2,000 Feet

Legend



15020018

Active_Leases



TERREBONNE

P.O.B.

LAKE BARRE

SL 20946

SL 199

TRACT 44227 - Terrebonne Parish, Louisiana

All of the lands now or formerly constituting the beds and bottoms of all water bodies of every nature and description as to which title is vested in the State of Louisiana, together with all islands arising therein and other lands formed by accretion or by reliction, where allowed by law, excepting tax adjudicated lands, and not presently under mineral lease on February 11, 2015, situated in Terrebonne Parish, Louisiana, and more particularly described as follows: Beginning at a point having Coordinates of X = 2,279,496.00 and Y = 219,058.00; thence East 7,429.00 feet to a point having Coordinates of X = 2,286,925.00 and Y = 219,058.00; thence South 13,863.00 feet to a point having Coordinates of X = 2,286,925.00 and Y = 205,195.00; thence West 4,550.00 feet to the Northeast corner of State Lease No. 21151, having Coordinates of X = 2,282,375.00 and Y = 205,195.00; thence West 1,549.11 feet along the Northern boundary of said State Lease No. 21151 to a point on the boundary of State Lease No. 20946, having Coordinates of X = 2,280,825.89 and Y = 205,195.00; thence along the boundary of said State Lease No. 20946 the following courses and distances: North 60 degrees 28 minutes 31 seconds East 940.20 feet to a point having Coordinates of X = 2,281,644.00 and Y = 205,658.33; North 106.31 feet to a point having Coordinates of X = 2,281,644.00 and Y = 205,764.64 and North 60 degrees 01 minutes 13 seconds West 2,479.79 feet to a point having Coordinates of X = 2,279,496.00 and Y = 207,003.78; thence North 12,054.23 feet the point of beginning, **LESS AND EXCEPT** any right, title, and interest in lands owned by and not under lease from the State of Louisiana, on behalf of the Terrebonne Parish School Board, situated in Section 16, Township 21 South, Range 20 East, Terrebonne Parish, Louisiana, contained within the above described tract containing approximately **2,179 acres**, all as more particularly outlined on a plat on file in the Office of Mineral Resources, Department of Natural Resources. All bearings, distances and coordinates are based on Louisiana Coordinate System of 1927, (North or South Zone), where applicable.

NOTE: The above description of the Tract nominated for the purpose of acquiring a mineral lease or a geophysical agreement has been provided and corrected, where required, exclusively by the nominating party. Any mineral lease or geophysical agreement selected from this Tract and awarded by the Louisiana State Mineral and Energy Board shall be without warranty of any kind, either express, implied or statutory including, but not limited to, title or the implied warranties of merchantability and fitness for a particular purpose.

An error or omission in the nominating party's Tract description may require that a State mineral lease or geophysical agreement be modified, canceled or abrogated due to the existence of conflicting leases, operating agreements, private claims or other future obligations or conditions within the Tract described. In such case, however, the Louisiana State Mineral and Energy Board shall not be obligated to refund any consideration paid by the Lessee prior to such modification,

cancellation or abrogation including, but not limited to, bonuses, rentals and royalties.

NOTE: The State of Louisiana does hereby reserve, and this lease shall be subject to, the imprescriptible right of surface use in the nature of a servitude in favor of the Department of Natural Resources, including its Offices and Commissions, for the sole purpose of implementing, constructing, servicing and maintaining approved coastal zone management and/or restoration projects. Utilization of any and all rights derived under this lease by the mineral lessee, its agents, successors or assigns, shall not interfere with nor hinder the reasonable surface use by the Department of Natural Resources, its Offices or Commissions, as herein above reserved.

Applicant: THEOPHILUS OIL, GAS & LAND SERVICES, LLC

Bidder	Cash Payment	Price/ Acre	Rental	Oil	Gas	Other

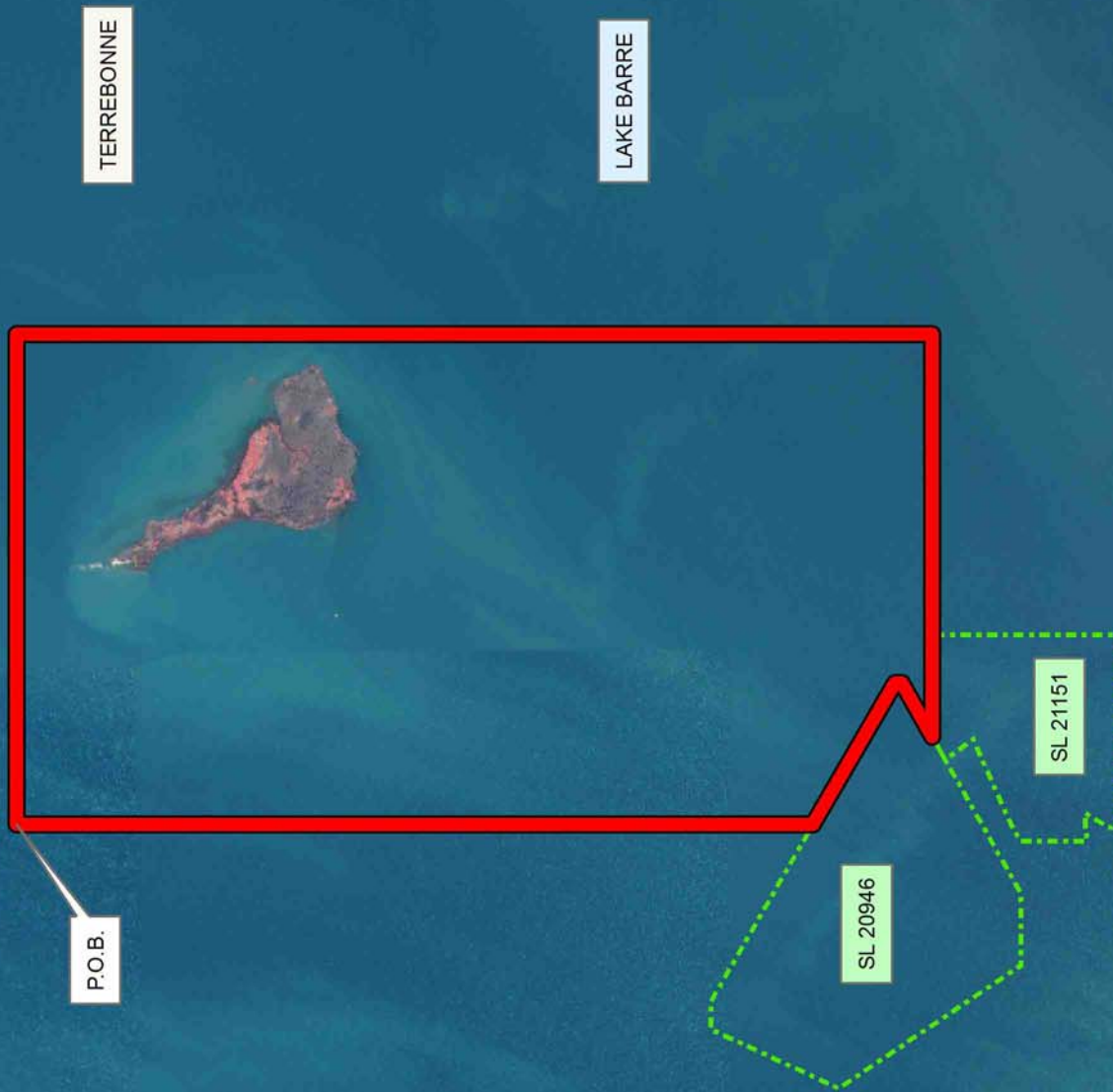
Legend

 15020019

 Active_Leases

 N

0 2,000 Feet



TRACT 44228 - Lafourche and Terrebonne Parishes, Louisiana

All of the lands now or formerly constituting the beds and bottoms of all water bodies of every nature and description as to which title is vested in the State of Louisiana, together with all islands arising therein and other lands formed by accretion or by reliction, where allowed by law, excepting tax adjudicated lands, and not presently under mineral lease on February 11, 2015, situated in Lafourche and Terrebonne Parishes, Louisiana, and more particularly described as follows: Beginning at a point having Coordinates of X = 2,304,086.18 and Y = 208,959.96; thence East 1,885.30 feet to the Northwest corner of the North portion of State Lease No. 1480, as amended, having Coordinates of X = 2,305,971.48 and Y = 208,959.96; thence South 01 degrees 00 minutes 00 seconds East 7,186.60 feet along the West boundary of said portion of said State Lease No. 1480 to its Southwest corner, having Coordinates of X = 2,306,096.89 and Y = 201,774.45; thence West 6,396.89 feet to a point on the boundary of State Lease No. 20892, having Coordinates of X = 2,299,700.00 and Y = 201,774.45; thence along the East boundary of said State Lease No. 20892 the following courses and distances: North 1,275.55 feet to a point having Coordinates of X = 2,299,700.00 and Y = 203,050.00 and North 55 degrees 04 minutes 50 seconds West 6,466.56 feet to a point having Coordinates of X = 2,294,397.69 and Y = 206,751.61, and South 79 degrees 11 minutes 44 seconds West 45.34 feet to its Northwest corner, also being the Northeast corner of State Lease No. 20893, having Coordinates of X = 2,294,353.15 and Y = 206,743.11; thence South 79 degrees 11 minutes 52 seconds West 1,159.11 feet along the North boundary of said State Lease No. 20893 to a point having Coordinates of X = 2,293,214.58 and Y = 206,525.87; thence North 694.79 feet to a point having Coordinates of X = 2,293,214.58 and Y = 207,220.66; thence East 10,871.60 feet to a point having Coordinates of X = 2,304,086.18 and Y = 207,220.66; thence North 1,739.30 feet to the point of beginning, containing approximately **1,165 acres**, all as more particularly outlined on a plat on file in the Office of Mineral Resources, Department of Natural Resources. All bearings, distances and coordinates are based on Louisiana Coordinate System of 1927, (North or South Zone), where applicable.

NOTE: The above description of the Tract nominated for the purpose of acquiring a mineral lease or a geophysical agreement has been provided and corrected, where required, exclusively by the nominating party. Any mineral lease or geophysical agreement selected from this Tract and awarded by the Louisiana State Mineral and Energy Board shall be without warranty of any kind, either express, implied or statutory including, but not limited to, title or the implied warranties of merchantability and fitness for a particular purpose.

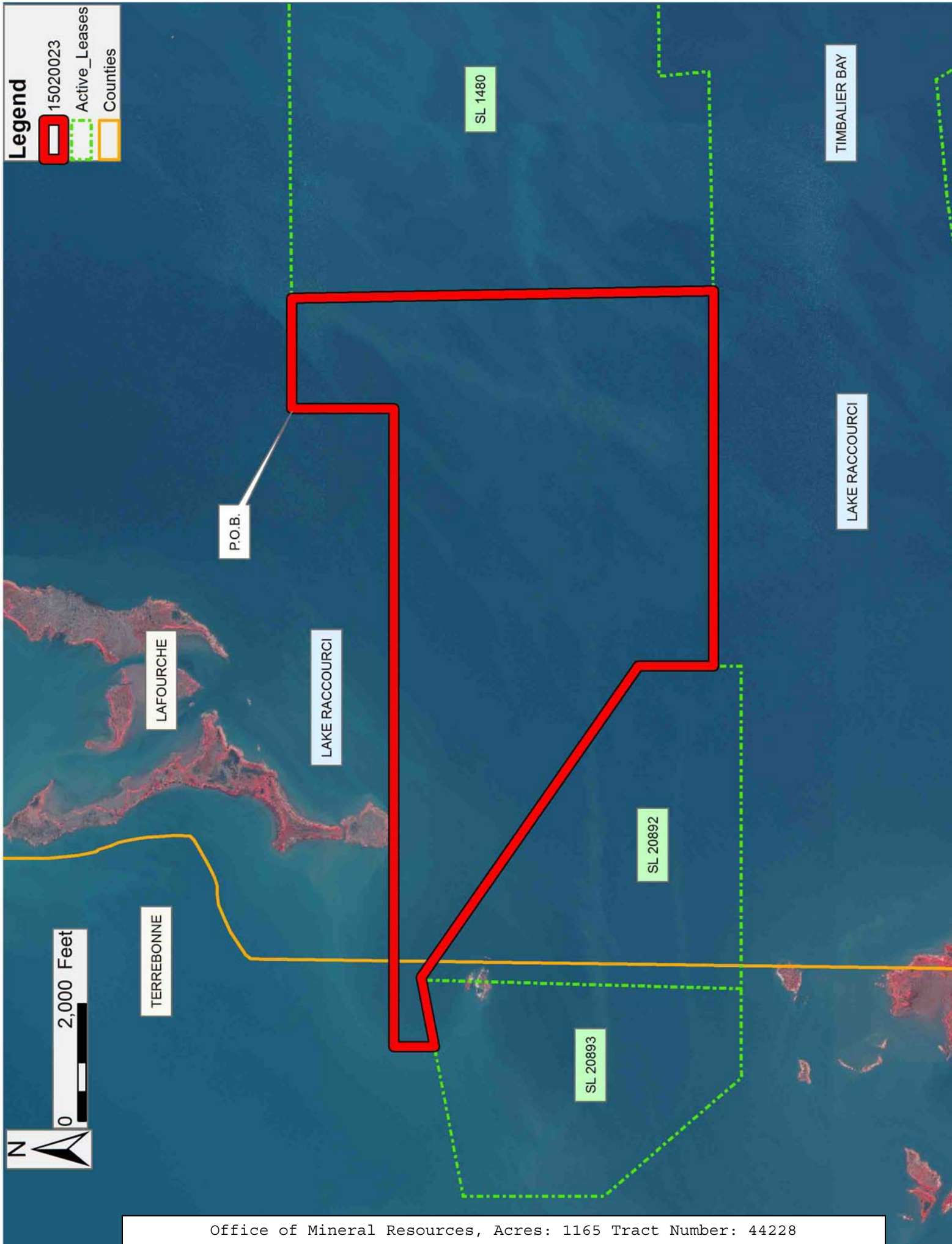
An error or omission in the nominating party's Tract description may require that a State mineral lease or geophysical agreement be modified, canceled or abrogated due to the existence of conflicting leases, operating agreements, private claims or other future obligations or conditions within the Tract described. In such case, however, the

Louisiana State Mineral and Energy Board shall not be obligated to refund any consideration paid by the Lessee prior to such modification, cancellation or abrogation including, but not limited to, bonuses, rentals and royalties.

NOTE: The State of Louisiana does hereby reserve, and this lease shall be subject to, the imprescriptible right of surface use in the nature of a servitude in favor of the Department of Natural Resources, including its Offices and Commissions, for the sole purpose of implementing, constructing, servicing and maintaining approved coastal zone management and/or restoration projects. Utilization of any and all rights derived under this lease by the mineral lessee, its agents, successors or assigns, shall not interfere with nor hinder the reasonable surface use by the Department of Natural Resources, its Offices or Commissions, as herein above reserved.

Applicant: THEOPHILUS OIL, GAS & LAND SERVICES, LLC

Bidder	Cash Payment	Price/ Acre	Rental	Oil	Gas	Other



TRACT 44229 - Lafourche Parish, Louisiana

All of the lands now or formerly constituting the beds and bottoms of all water bodies of every nature and description as to which title is vested in the State of Louisiana, together with all islands arising therein and other lands formed by accretion or by reliction, where allowed by law, excepting tax adjudicated lands, and not presently under mineral lease on February 11, 2015, situated in Lafourche Parish, Louisiana, and more particularly described as follows: Beginning at the Southwest corner of the North portion of State Lease No. 1480, as amended, having Coordinates of $X = 2,306,096.88$ and $Y = 201,774.45$; thence along the Southerly boundary of the North portion of said State Lease No. 1480 the following courses and distances: North 88 degrees 50 minutes 07 seconds East 3,735.38 feet, North 05 degrees 13 minutes 26 seconds West 851.15 feet, North 89 degrees 38 minutes 36 seconds East 2,501.08 feet, North 60 degrees 21 minutes 42 seconds East 316.37 feet, North 56 degrees 35 minutes 32 seconds East 563.00 feet, North 53 degrees 31 minutes 51 seconds East 286.00 feet, North 50 degrees 47 minutes 34 seconds East 980.80 feet, North 52 degrees 52 minutes 09 seconds East 878.00 feet, North 56 degrees 33 minutes 36 seconds East 635.10 feet, North 59 degrees 18 minutes 01 seconds East 744.30 feet, North 57 degrees 30 minutes 24 seconds East 1,991.80 feet, North 63 degrees 26 minutes 06 seconds East 219.34 feet to a point being on the Western boundary of State Lease No. 14589, as amended; thence along the Western boundary of said State Lease No. 14589 the following courses and distances: North 63 degrees 26 minutes 06 seconds East 853.97 feet, North 65 degrees 49 minutes 15 seconds East 537.10 feet, South 34 degrees 01 minutes 10 seconds West 482.60 feet, South 28 degrees 36 minutes 38 seconds West 626.50 feet, South 27 degrees 48 minutes 59 seconds West 1,465.34 feet to a point being the Northernmost corner of the East portion of said State Lease No. 1480, thence along the boundaries of the East portion of said State Lease No. 1480 the following courses and distances: South 27 degrees 48 minutes 59 seconds West 377.66 feet, South 33 degrees 23 minutes 19 seconds West 527.00 feet, South 41 degrees 59 minutes 14 seconds West 403.60 feet, South 43 degrees 13 minutes 43 seconds West 686.20 feet, South 48 degrees 21 minutes 59 seconds West 722.50 feet, South 52 degrees 47 minutes 01 seconds West 992.00 feet, South 57 degrees 07 minutes 26 seconds West 976.40 feet, South 58 degrees 02 minutes 09 seconds West 516.60 feet, South 60 degrees 12 minutes 18 seconds West 289.10 feet, South 61 degrees 00 minutes 04 seconds West 152.35 feet, South 03 degrees 41 minutes 29 seconds East 454.47 feet, South 00 degrees 29 minutes 42 seconds East 2,283.26 feet, North 63 degrees 17 minutes 36 seconds East 2,167.69 feet, South 1,172.45 feet, and East 2,193.23 feet to a point on the Western boundary of said State Lease No. 14589, having Coordinates of $X = 2,317,736.10$ and $Y = 198,143.96$; thence South 2,082.84 feet along the Western boundary of said State Lease No. 14589 to its Southwest corner having Coordinates of $X = 2,317,736.10$ and $Y = 196,061.12$; thence South 89 degrees 30 minutes 18 seconds West 2,812.45 feet to the Northeast corner of the East portion of State Lease No. 3258, as amended, having Coordinates of $X = 2,314,923.76$ and $Y = 196,036.82$; thence South 89 degrees 30 minutes 18 seconds West

1,129.13 feet along the North boundary of the East portion of said State Lease No. 3258 to the Southeast corner of State Lease No. 21088 having Coordinates of X = 2,313,794.68 and Y = 196,027.07; thence along the boundaries of said State Lease No. 21088 the following courses and distances: North 48 degrees 19 minutes 14 seconds East 187.88 feet to a point having Coordinates of X = 2,313,935.00 and Y = 196,152.00 and North 73 degrees 27 minutes 48 seconds West 3,981.29 feet to its Northwest corner and a point on the West boundary of State Lease No. 1480, as amended, having Coordinates of X = 2,310,118.39 and Y = 197,285.19; thence North 31 degrees 20 minutes 43 seconds West 809.77 feet to a corner having Coordinates of X = 2,309,697.15 and Y = 197,976.77, South 84 degrees 46 minutes 18 seconds West 2,024.53 feet to a corner having Coordinates of X = 2,307,681.04 and Y = 197,792.28, South 81 degrees 46 minutes 24 seconds West 1,108.08 feet to a corner having Coordinates of X = 2,306,587.33 and Y = 197,634.16 and South 77 degrees 05 minutes 33 seconds West 503.16 feet to a point having Coordinates of X = 2,306,096.89 and Y = 197,521.77; thence North 4,252.69 feet to the point of beginning, **LESS AND EXCEPT** Operating Agreement 0320 as described as follows: Beginning at a point having Coordinates of X = 2,309,754.00 and Y = 202,698.00; thence South 73 degrees 39 minutes 41 seconds East 3,284.76 feet to a point having Coordinates of X = 2,312,906.11 and Y = 201,773.95; thence South 63 degrees 21 minutes 41 seconds West 2,123.35 feet to a point having Coordinates of X = 2,311,008.15 and Y = 200,821.92; thence North 70 degrees 12 minutes 55 seconds West 1,189.67 feet to a point having Coordinates of X = 2,309,888.71 and Y = 201,224.61; thence North 05 degrees 13 minutes 26 seconds West 1,479.54 feet to the point of beginning, from the surface to one hundred feet below the stratigraphic equivalent of the Tex 11 Sand, as seen in the XPLOR State Lease No. 1480 No. 2 (Serial No. 224584) between 13,096 feet and 13,190 feet MD. This lease includes only waterbottoms claimed and owned by the state and specifically excludes any land which the state may claim or own and to which the mineral rights are vested in the state, nominated tract containing approximately **1358 acres**, all as more particularly outlined on a plat on file in the Office of Mineral Resources, Department of Natural Resources. All bearings, distances and coordinates are based on Louisiana Coordinate System of 1927, (North or South Zone), where applicable.

NOTE: The above description of the Tract nominated for the purpose of acquiring a mineral lease or a geophysical agreement has been provided and corrected, where required, exclusively by the nominating party. Any mineral lease or geophysical agreement selected from this Tract and awarded by the Louisiana State Mineral and Energy Board shall be without warranty of any kind, either express, implied or statutory including, but not limited to, title or the implied warranties of merchantability and fitness for a particular purpose.

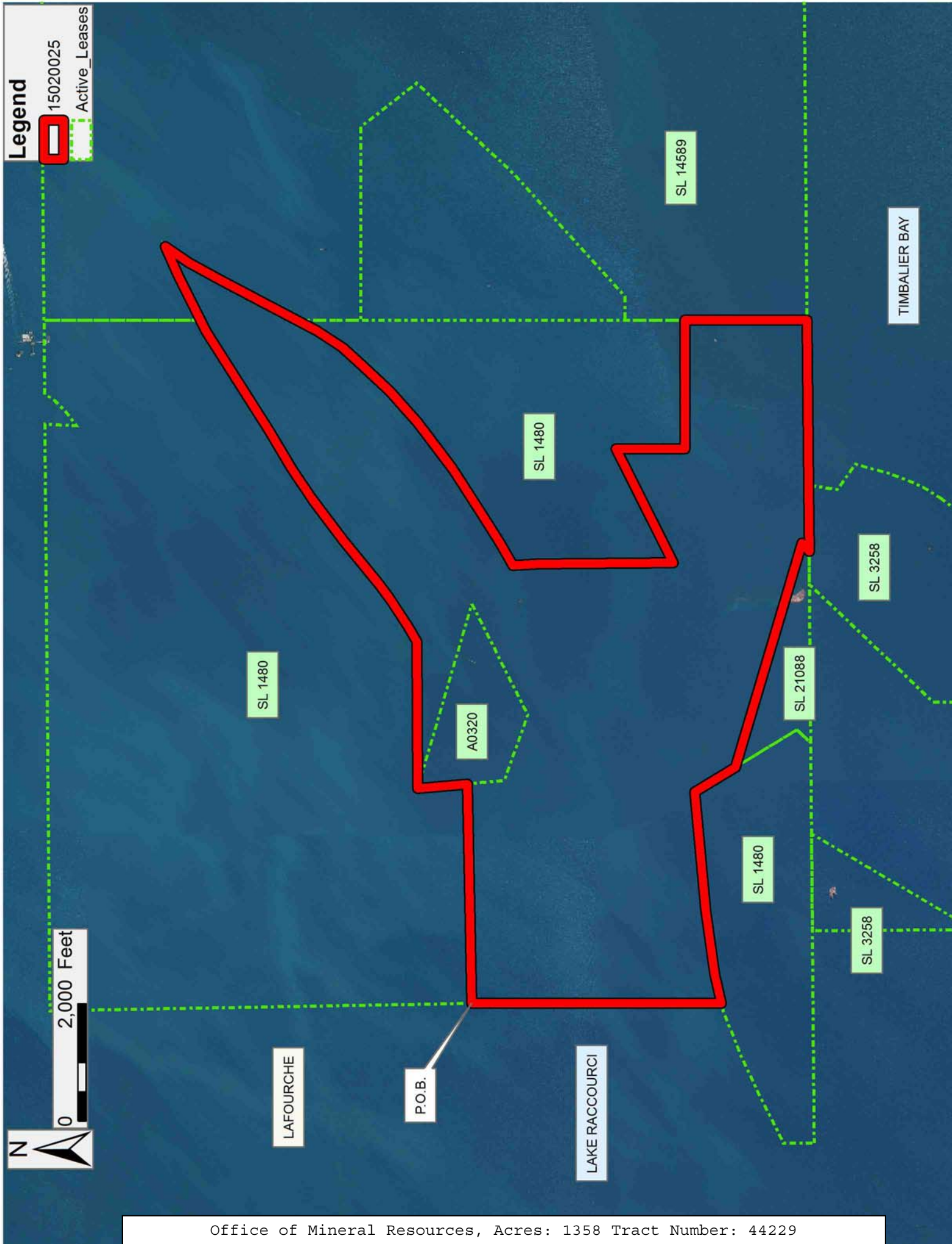
An error or omission in the nominating party's Tract description may require that a State mineral lease or geophysical agreement be modified, canceled or abrogated due to the existence of conflicting leases,

operating agreements, private claims or other future obligations or conditions within the Tract described. In such case, however, the Louisiana State Mineral and Energy Board shall not be obligated to refund any consideration paid by the Lessee prior to such modification, cancellation or abrogation including, but not limited to, bonuses, rentals and royalties.

NOTE: The State of Louisiana does hereby reserve, and this lease shall be subject to, the imprescriptible right of surface use in the nature of a servitude in favor of the Department of Natural Resources, including its Offices and Commissions, for the sole purpose of implementing, constructing, servicing and maintaining approved coastal zone management and/or restoration projects. Utilization of any and all rights derived under this lease by the mineral lessee, its agents, successors or assigns, shall not interfere with nor hinder the reasonable surface use by the Department of Natural Resources, its Offices or Commissions, as herein above reserved.

Applicant: THEOPHILUS OIL, GAS & LAND SERVICES, LLC

Bidder	Cash Payment	Price/ Acre	Rental	Oil	Gas	Other



TRACT 44230 - Terrebonne Parish, Louisiana

All of the lands now or formerly constituting the beds and bottoms of all water bodies of every nature and description as to which title is vested in the State of Louisiana, together with all islands arising therein and other lands formed by accretion or by reliction, where allowed by law, excepting tax adjudicated lands, and not presently under mineral lease on February 11, 2015, situated in Terrebonne Parish, Louisiana, and more particularly described as follows: Beginning at the Northeast corner of State Lease No. 21151 having Coordinates of X = 2,282,375.00 and Y = 205,195.00; thence East 8,295.00 feet to a point on the West boundary of State Lease No. 20893, having Coordinates of X = 2,290,670.00 and Y = 205,195.00; thence along said boundary of said State Lease No. 20893 the following courses and distances: South 1,565.00 feet to a point having Coordinates of X = 2,290,670.00 and Y = 203,630.00 and South 40 degrees 49 minutes 57 seconds East 3,085.22 feet to a point on the boundary of State Lease No. 20894 having Coordinates of X = 2,292,687.27 and Y = 201,295.65; thence South 40 degrees 49 minutes 57 seconds East 345.23 feet along said boundary of said State Lease No. 20894 to a point on the boundary of State Lease No. 21149 having Coordinates of X = 2,292,913.00 and Y = 201,034.44; thence South 55 degrees 07 minutes 55 seconds West 3,660.10 feet along said boundary of said State Lease No. 21149 to a point on the boundary of State Lease No. 20896 having Coordinates of X = 2,289,910.00 and Y = 198,942.00; thence along said boundary of said State Lease No. 20896 the following courses and distances: West 3,730.00 feet to a point having Coordinates of X = 2,286,180.00 and Y = 198,942.00 and South 1,924.98 feet to a point having Coordinates of X = 2,286,180.00 and Y = 197,017.02; thence West 1,891.56 feet to a point on the boundary of State Lease No. 199, as amended, having Coordinates of X = 2,284,288.44 and Y = 197,017.02; thence along the boundary of said State Lease No. 199 the following courses and distances: South 89 degrees 34 minutes 50 seconds West 2,600.00 feet to a point having Coordinates of X = 2,281,688.51 and Y = 196,997.99; North 00 degrees 25 minutes 10 seconds West 1,200.00 feet to a corner having Coordinates of X = 2,281,679.72 and Y = 198,197.96; South 89 degrees 34 minutes 50 seconds West 326.96 feet to a point having Coordinates of X = 2,281,352.77 and Y = 198,195.57; North 18 degrees 18 minutes 50 seconds East 239.08 feet to a point having Coordinates of X = 2,281,427.90 and Y = 198,422.54; North 10 degrees 11 minutes 50 seconds East 162.80 feet to a point having Coordinates of X = 2,281,456.72 and Y = 198,582.77; North 00 degrees 25 minute 10 seconds West 65.00 feet to a point having Coordinates of X = 2,281,456.24 and Y = 198,647.76; North 01 degrees 45 minutes 10 seconds West 215.10 feet to a point having Coordinates of X = 2,281,449.66 and Y = 198,862.76; North 07 degrees 08 minutes 10 seconds West 85.60 feet to a point having Coordinates of X = 2,281,439.03 and Y = 198,947.70; North 13 degrees 06 minutes 10 seconds West 205.00 feet to a point having Coordinates of X = 2,281,392.56 and Y = 199,147.36; North 09 degrees 53 minutes 10 seconds West 152.10 feet to a point having Coordinates of X = 2,281,366.44 and Y = 199,297.20; North 00 degrees 25 minutes 10 seconds West 80.00 feet to a point having Coordinates of X = 2,281,365.86 and Y = 199,377.20; North 08 degrees 15

minutes 50 seconds East 74.20 feet to a point having Coordinates of X = 2,281,376.52 and Y = 199,450.63; North 19 degrees 57 minutes 50 seconds East 369.90 feet to a point having Coordinates of X = 2,281,502.82 and Y = 199,798.30; South 58 degrees 47 minutes 50 seconds West 273.50 feet to a point having Coordinates of X = 2,281,268.88 and Y = 199,656.61; South 48 degrees 43 minutes 50 seconds West 244.60 feet to a point having Coordinates of X = 2,281,085.04 and Y = 199,495.27; South 44 degrees 34 minutes 50 seconds West 282.90 feet to a point having Coordinates of X = 2,280,886.46 and Y = 199,293.77; South 54 degrees 47 minutes 50 seconds West 219.20 feet to a point having Coordinates of X = 2,280,707.35 and Y = 199,167.41; North 04 degrees 08 minutes 50 seconds East 125.40 feet to a point having Coordinates of X = 2,280,716.42 and Y = 199,292.48; North 10 degrees 31 minutes 50 seconds East 157.90 feet to a point having Coordinates of X = 2,280,745.28 and Y = 199,447.72; North 14 degrees 59 minutes 50 seconds East 150.40 feet to a point having Coordinates of X = 2,280,784.20 and Y = 199,593.00; North 17 degrees 19 minutes 50 seconds East 131.30 feet to a point having Coordinates of X = 2,280,823.31 and Y = 199,718.34; North 24 degrees 16 minutes 50 seconds East 275.20 feet to a point having Coordinates of X = 2,280,936.47 and Y = 199,969.20; North 24 degrees 08 minutes 50 seconds East 192.40 feet to a point having Coordinates of X = 2,281,015.18 and Y = 200,144.76; South 76 degrees 31 minutes 50 seconds West 354.10 feet to a point having Coordinates of X = 2,280,670.82 and Y = 200,062.28; North 33 degrees 47 minutes 50 seconds East 302.30 feet to a point having Coordinates of X = 2,280,838.98 and Y = 200,313.50; South 73 degrees 25 minutes 50 seconds West 197.80 feet to a point having Coordinates of X = 2,280,649.39 and Y = 200,257.08; North 20 degrees 56 minutes 50 seconds East 123.50 feet to a point having Coordinates of X = 2,280,693.54 and Y = 200,372.43; North 83 degrees 47 minutes 10 seconds West 432.90 feet to a point having Coordinates of X = 2,280,263.19 and Y = 200,419.28; North 81 degrees 21 minutes 10 seconds West 349.30 feet to a point having Coordinates of X = 2,279,917.86 and Y = 200,471.80; North 17 degrees 14 minutes 50 seconds East 477.50 feet to a point having Coordinates of X = 2,280,059.43 and Y = 200,927.83; North 81 degrees 26 minutes 10 seconds West 256.20 feet to a point having Coordinates of X = 2,279,806.09 and Y = 200,965.98; North 80 degrees 44 minutes 10 seconds West 357.00 feet to a point having Coordinates of X = 2,279,453.75 and Y = 201,023.45; North 78 degrees 49 minutes 10 seconds West 189.65 feet to a point having Coordinates of X = 2,279,267.70 and Y = 201,060.22; North 00 degrees 25 minutes 10 seconds West 951.69 feet to a point having Coordinates of X = 2,279,260.73 and Y = 202,011.89; North 20 degrees 01 minutes 49 seconds East 288.31 feet to a point having Coordinates of X = 2,279,359.48 and Y = 202,282.76, and North 23 degrees 07 minutes 49 seconds East 127.49 feet to a point on the boundary of State Lease No. 21151, having Coordinates of X = 2,279,409.56 and Y = 202,400.00; thence along said boundary of said State Lease No. 21151, the following courses and distances: East 2,965.44 feet to a point having Coordinates of X = 2,282,375.00 and Y =

202,400.00 and North 2,795.00 feet to the point of beginning, containing approximately **1,673.83 acres**, all as more particularly outlined on a plat on file in the Office of Mineral Resources, Department of Natural Resources. All bearings, distances and coordinates are based on Louisiana Coordinate System of 1927, (North or South Zone), where applicable.

NOTE: The above description of the Tract nominated for the purpose of acquiring a mineral lease or a geophysical agreement has been provided and corrected, where required, exclusively by the nominating party. Any mineral lease or geophysical agreement selected from this Tract and awarded by the Louisiana State Mineral and Energy Board shall be without warranty of any kind, either express, implied or statutory including, but not limited to, title or the implied warranties of merchantability and fitness for a particular purpose.

An error or omission in the nominating party's Tract description may require that a State mineral lease or geophysical agreement be modified, canceled or abrogated due to the existence of conflicting leases, operating agreements, private claims or other future obligations or conditions within the Tract described. In such case, however, the Louisiana State Mineral and Energy Board shall not be obligated to refund any consideration paid by the Lessee prior to such modification, cancellation or abrogation including, but not limited to, bonuses, rentals and royalties.

NOTE: The State of Louisiana does hereby reserve, and this lease shall be subject to, the imprescriptible right of surface use in the nature of a servitude in favor of the Department of Natural Resources, including its Offices and Commissions, for the sole purpose of implementing, constructing, servicing and maintaining approved coastal zone management and/or restoration projects. Utilization of any and all rights derived under this lease by the mineral lessee, its agents, successors or assigns, shall not interfere with nor hinder the reasonable surface use by the Department of Natural Resources, its Offices or Commissions, as herein above reserved.

Applicant: THEOPHILUS OIL, GAS & LAND SERVICES, LLC

Bidder	Cash Payment	Price/ Acre	Rental	Oil	Gas	Other

Legend

15020022

Active_Leases

0 2,000 Feet

N

TERREBONNE

P.O.B.

LAKE BARRE

SL 20893

SL 21151

SL 20894

SL 21149

SL 20896

SL 199

TIMBALIER BAY

TRACT 44231 - Lafourche Parish, Louisiana

All of the lands now or formerly constituting the beds and bottoms of all water bodies of every nature and description as to which title is vested in the State of Louisiana, together with all islands arising therein and other lands formed by accretion or by reliction, where allowed by law, excepting tax adjudicated lands, and not presently under mineral lease on February 11, 2015, situated in Lafourche Parish, Louisiana, and more particularly described as follows: Beginning at a point on the East boundary of State Lease No. 1480, as amended, and a point on the West boundary of State Lease No. 14589, having Coordinates of X = 2,317,736.09 and Y = 199,161.00; thence North 4,500.00 feet along the East boundary of said State Lease No. 1480 to a point located on an interior corner of State Lease No. 14589 having Coordinates of X = 2,317,736.09 and Y = 203,661.00; thence along the boundary of said State Lease No. 14589 the following courses and distances: East 3,300.00 feet to a point having Coordinates of X = 2,321,036.09 and Y = 203,661.00, South 38 degrees 00 minutes 00 seconds East 1,200.00 feet to a point having Coordinates of X = 2,321,774.88 and Y = 202,715.39; South 43 degrees 00 minutes 00 seconds West 2,250.01 feet to a point having Coordinates of X = 2,320,240.38 and Y = 201,069.84, South 47 degrees 47 minutes 18 seconds West 2,841.08 feet to a point having Coordinates of X = 2,318,136.09 and Y = 199,161.00 and West 400.00 feet to the point of beginning, containing approximately **266.88 acres**, all as more particularly outlined on a plat on file in the Office of Mineral Resources, Department of Natural Resources. All bearings, distances and coordinates are based on Louisiana Coordinate System of 1927, (North or South Zone), where applicable.

NOTE: The above description of the Tract nominated for the purpose of acquiring a mineral lease or a geophysical agreement has been provided and corrected, where required, exclusively by the nominating party. Any mineral lease or geophysical agreement selected from this Tract and awarded by the Louisiana State Mineral and Energy Board shall be without warranty of any kind, either express, implied or statutory including, but not limited to, title or the implied warranties of merchantability and fitness for a particular purpose.

An error or omission in the nominating party's Tract description may require that a State mineral lease or geophysical agreement be modified, canceled or abrogated due to the existence of conflicting leases, operating agreements, private claims or other future obligations or conditions within the Tract described. In such case, however, the Louisiana State Mineral and Energy Board shall not be obligated to refund any consideration paid by the Lessee prior to such modification, cancellation or abrogation including, but not limited to, bonuses, rentals and royalties.

NOTE: The State of Louisiana does hereby reserve, and this lease shall be subject to, the imprescriptible right of surface use in the nature of a servitude in favor of the Department of Natural Resources, including its

Offices and Commissions, for the sole purpose of implementing, constructing, servicing and maintaining approved coastal zone management and/or restoration projects. Utilization of any and all rights derived under this lease by the mineral lessee, its agents, successors or assigns, shall not interfere with nor hinder the reasonable surface use by the Department of Natural Resources, its Offices or Commissions, as herein above reserved.

Applicant: THEOPHILUS OIL, GAS & LAND SERVICES, LLC

Bidder	Cash Payment	Price/ Acre	Rental	Oil	Gas	Other

Legend

 15020026

 Active_Leases

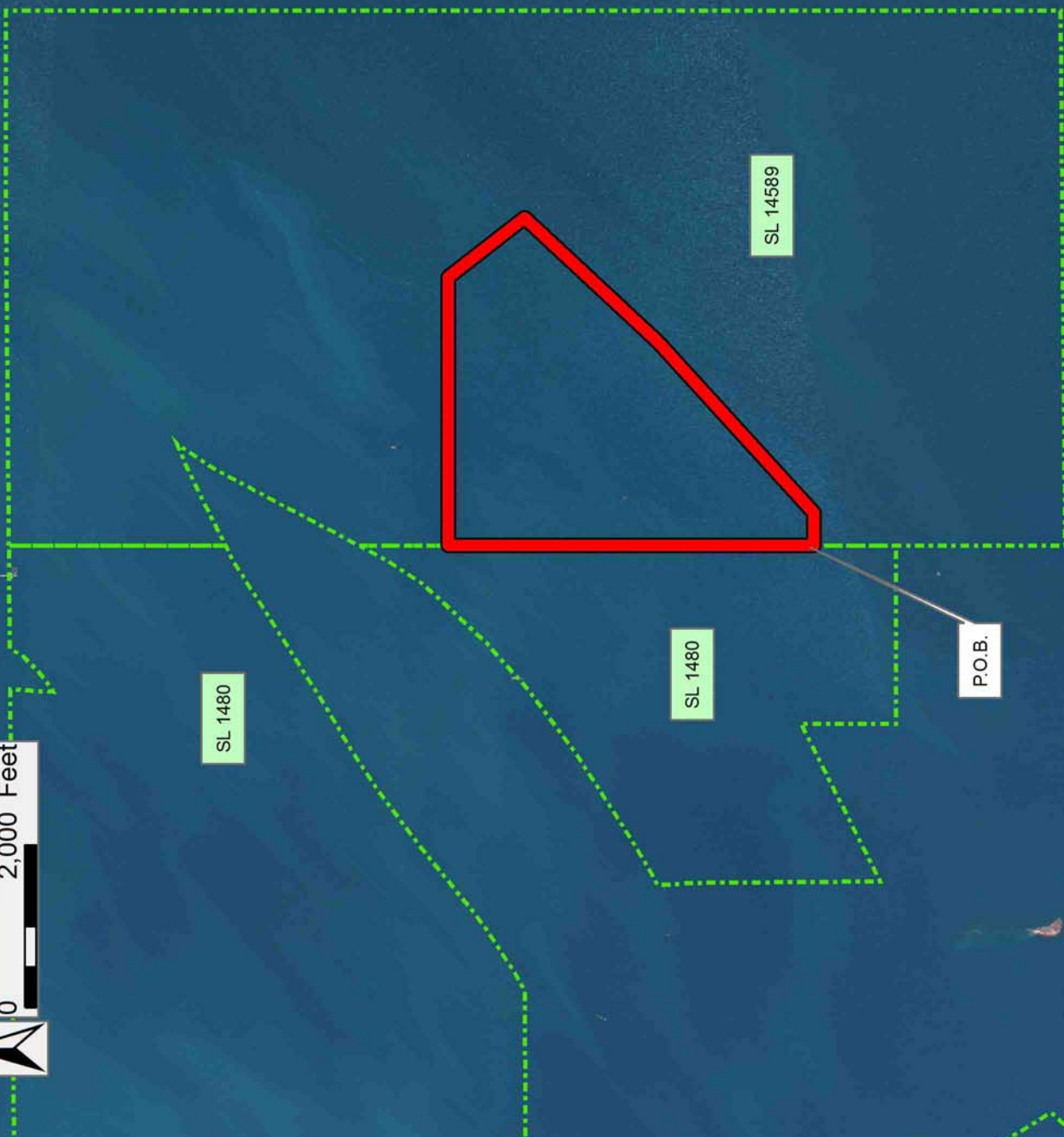
LAKE RACCOURCI

LAFOURCHE

TIMBALIER BAY

 N

 0 2,000 Feet



TRACT 44232 - Lafourche Parish, Louisiana

All of the lands now or formerly constituting the beds and bottoms of all water bodies of every nature and description as to which title is vested in the State of Louisiana, together with all islands arising therein and other lands formed by accretion or by reliction, where allowed by law, excepting tax adjudicated lands, and not presently under mineral lease on February 11, 2015, situated in Lafourche Parish, Louisiana, and more particularly described as follows: Beginning at a point on the boundary of State Lease No. 20892 having Coordinates of X = 2,299,700.00 and Y = 201,774.45; thence East 6,396.89 feet to the Southwest corner of the Northern portion of State Lease No. 1480, as amended, having Coordinates of X = 2,306,096.89 and Y = 201,774.45; thence South 4,252.68 feet to a point on the Northern boundary of the Southern portion of said State Lease No. 1480, having Coordinates of X = 2,306,096.89 and Y = 197,521.77; thence along said boundary of said State Lease No. 1480, the following courses and distances: South 77 degrees 05 minutes 27 seconds West 145.74 feet to a point having Coordinates of X = 2,305,954.83 and Y = 197,489.21, South 68 degrees 11 minutes 55 seconds West 851.53 feet to a point having Coordinates of X = 2,305,164.20 and Y = 197,172.96, South 64 degrees 51 minutes 17 seconds West 713.27 feet to a point having Coordinates of X = 2,304,518.52 and Y = 196,869.88, South 63 degrees 06 minutes 13 seconds West 901.59 feet to a point having Coordinates of X = 2,303,714.46 and Y = 196,462.02 and South 00 degrees 29 minutes 42 seconds East 522.02 feet to a point on the Northern boundary of State Lease No. 3599, as amended, having Coordinates of X = 2,303,718.97 and Y = 195,940.02; thence along said boundary of said State Lease No. 3599 the following courses and distances: South 89 degrees 30 minutes 20 seconds West 870.04 feet to a point having Coordinates of X = 2,302,848.96 and Y = 195,932.51, North 00 degrees 29 minutes 43 seconds West 405.00 feet to a point having Coordinates of X = 2,302,845.46 and Y = 196,337.49 and South 89 degrees 30 minutes 18 seconds West 4,416 feet to the point being the Southeast corner of State Lease No. 3278, as amended and State Lease No. 3723, as amended; thence Northerly approximately 5,000 feet along the East boundary said State Lease No. 3278 and said State Lease No. 3723 to their Northeast corner, to a point on the Southern boundary of said State Lease No. 20892; thence along the boundary of said State Lease No. 20892 the following courses and distances: North 89 degrees 59 minutes 58 seconds East 1,270.38 feet to a point having Coordinates of X = 2,299,700.00 and Y = 201,299.35 and North 475.10 feet to the point of beginning, containing approximately **915.00 acres**, all as more particularly outlined on a plat on file in the Office of Mineral Resources, Department of Natural Resources. All bearings, distances and coordinates are based on Louisiana Coordinate System of 1927, (North or South Zone), where applicable.

NOTE: The above description of the Tract nominated for the purpose of acquiring a mineral lease or a geophysical agreement has been provided and corrected, where required, exclusively by the nominating party. Any mineral lease or geophysical agreement selected from this Tract and awarded by the Louisiana State Mineral and Energy Board shall be without

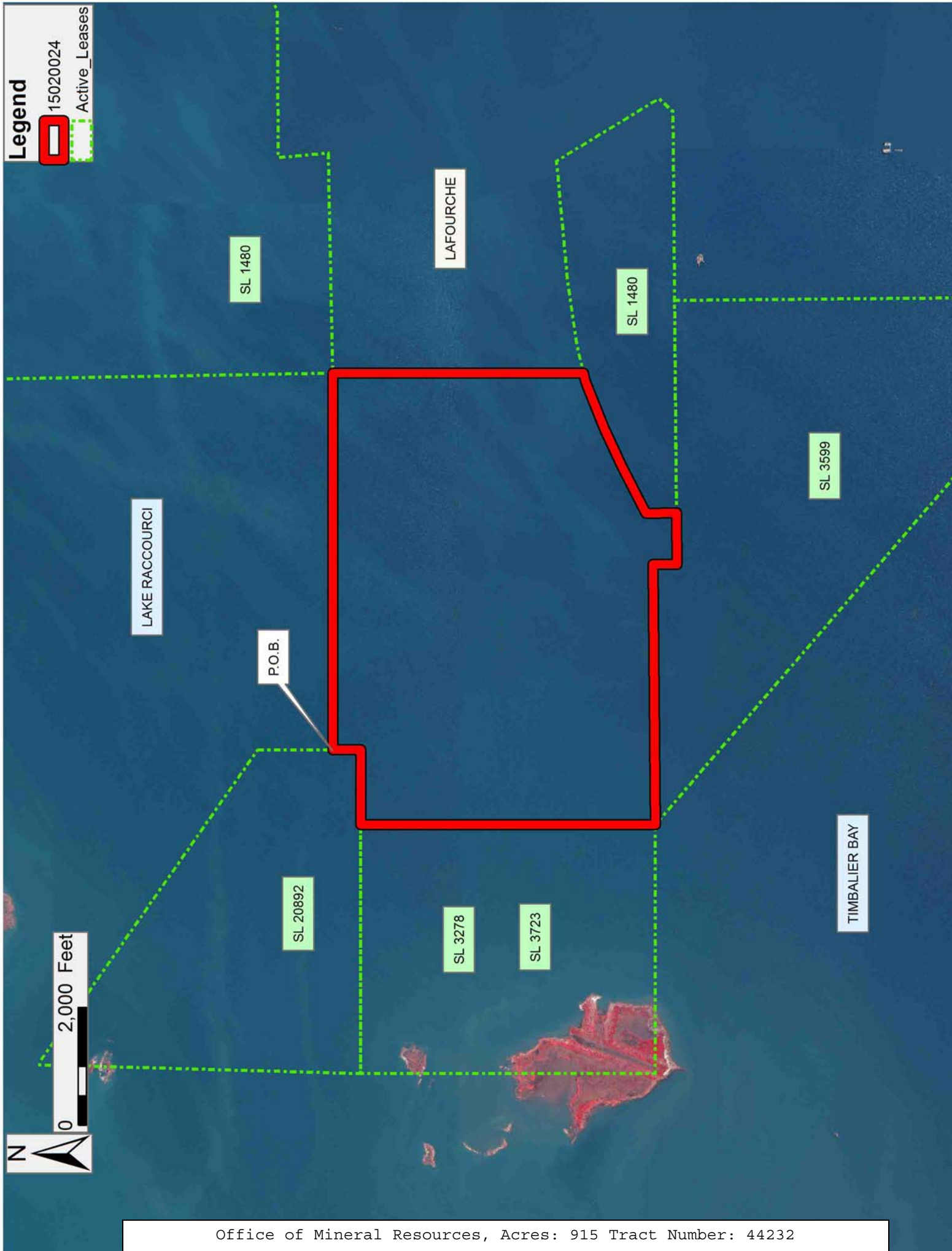
warranty of any kind, either express, implied or statutory including, but not limited to, title or the implied warranties of merchantability and fitness for a particular purpose.

An error or omission in the nominating party's Tract description may require that a State mineral lease or geophysical agreement be modified, canceled or abrogated due to the existence of conflicting leases, operating agreements, private claims or other future obligations or conditions within the Tract described. In such case, however, the Louisiana State Mineral and Energy Board shall not be obligated to refund any consideration paid by the Lessee prior to such modification, cancellation or abrogation including, but not limited to, bonuses, rentals and royalties.

NOTE: The State of Louisiana does hereby reserve, and this lease shall be subject to, the imprescriptible right of surface use in the nature of a servitude in favor of the Department of Natural Resources, including its Offices and Commissions, for the sole purpose of implementing, constructing, servicing and maintaining approved coastal zone management and/or restoration projects. Utilization of any and all rights derived under this lease by the mineral lessee, its agents, successors or assigns, shall not interfere with nor hinder the reasonable surface use by the Department of Natural Resources, its Offices or Commissions, as herein above reserved.

Applicant: THEOPHILUS OIL, GAS & LAND SERVICES, LLC

Bidder	Cash Payment	Price/ Acre	Rental	Oil	Gas	Other



TRACT 44233 - Terrebonne Parish, Louisiana

All of the lands now or formerly constituting the beds and bottoms of all water bodies of every nature and description as to which title is vested in the State of Louisiana, together with all islands arising therein and other lands formed by accretion or by reliction, where allowed by law, excepting tax adjudicated lands, and not presently under mineral lease on February 11, 2015, situated in Terrebonne Parish, Louisiana, and more particularly described as follows: Beginning at a point on the boundary of State Lease No. 20896 having Coordinates of X = 2,286,180.00 and Y = 197,017.02; thence along the boundary of said State Lease No. 20896 the following courses and distances: South 753.88 feet to a point having Coordinates of X = 2,286,180.00 and Y = 196,263.14, North 89 degrees 59 minutes 56 seconds East 2,634.09 feet to a point having Coordinates of X = 2,288,814.09 and Y = 196,263.14, and North 64 degrees 28 minutes 9 seconds East 2,804.77 feet to the Southwest corner of State Lease No. 21153 having Coordinates of X = 2,291,345.00 and Y = 197,472.00; thence South 82 degrees 50 minutes 35 seconds East approximately 2,881 feet along the South boundary of said State Lease No. 21153 to its Southeast corner, also being a point on the West boundary of State Lease No. 3723 and State Lease No. 3278; thence South approximately 813 feet along the West boundary of said State Lease No. 3723 and State Lease No. 3278 to their Southwest corner; thence South 9,045.19 feet to a point having Coordinates of X = 2,294,204.62 and Y = 187,254.15; thence Westerly approximately 6,184 feet to a point on the boundary of Special Section 16; thence along the boundary of said Special Section 16 the following: Northerly approximately 1893 feet and Westerly approximately 6732 feet to a point on the Eastern boundary of State Lease No. 199, as amended, thence along the boundary of said State Lease No. 199, the following courses and distances: North 913.33 feet to a point having Coordinates of X = 2,281,289.31 and Y = 190,016.58, South 89 degrees 34 minutes 50 seconds West 2,600.01 feet to a point having Coordinates of X = 2,278,689.37 and Y = 189,997.55, North 00 degrees 25 minutes 09 seconds West 600.00 feet to a point having Coordinates of X = 2,278,684.98 and Y = 190,597.53, South 89 degrees 34 minutes 50 seconds West 1,023.22 feet to a point having Coordinates of X = 2,277,661.79 and Y = 190,590.04, North 00 degrees 25 minutes 10 seconds West 1,349.34 feet to a point having Coordinates of X = 2,277,651.91 and Y = 191,939.34, North 89 degrees 34 minutes 50 seconds East 2,220.03 feet to a point having Coordinates of X = 2,279,871.88 and Y = 191,955.59, North 00 degrees 25 minutes 10 seconds West 2,140.17 feet to a point having Coordinates of X = 2,279,856.22 and Y = 194,095.70, North 89 degrees 34 minutes 50 seconds East 453.48 feet to a point having Coordinates of X = 2,280,309.69 and Y = 194,099.02, South 00 degrees 25 minutes 11 seconds East 1,111.20 feet to a point having Coordinates of X = 2,280,317.83 and Y = 192,987.85, North 89 degrees 34 minutes 50 seconds East 4,000.00 feet to a point having Coordinates of X = 2,284,317.72 and Y = 193,017.13, and North 00 degrees 25 minutes 10 seconds West 4,000.00 feet to a point having Coordinates of X = 2,284,288.44 and Y = 197,017.02; thence East 1,891.56 feet to the point of beginning, **LESS AND EXCEPT** any right, title, and interest in lands owned by and not under lease from the State of

Louisiana, Special Section 16, situated in Section 16, Township 22 South, Range 20 East, Terrebonne Parish, Louisiana, (This tract includes only waterbottoms claimed and owned by the state and specifically excludes any land which the state may claim or own and to which the mineral rights are vested in the state), containing approximately **2,484.00 acres**, all as more particularly outlined on a plat on file in the Office of Mineral Resources, Department of Natural Resources. All bearings, distances and coordinates are based on Louisiana Coordinate System of 1927, (North or South Zone), where applicable.

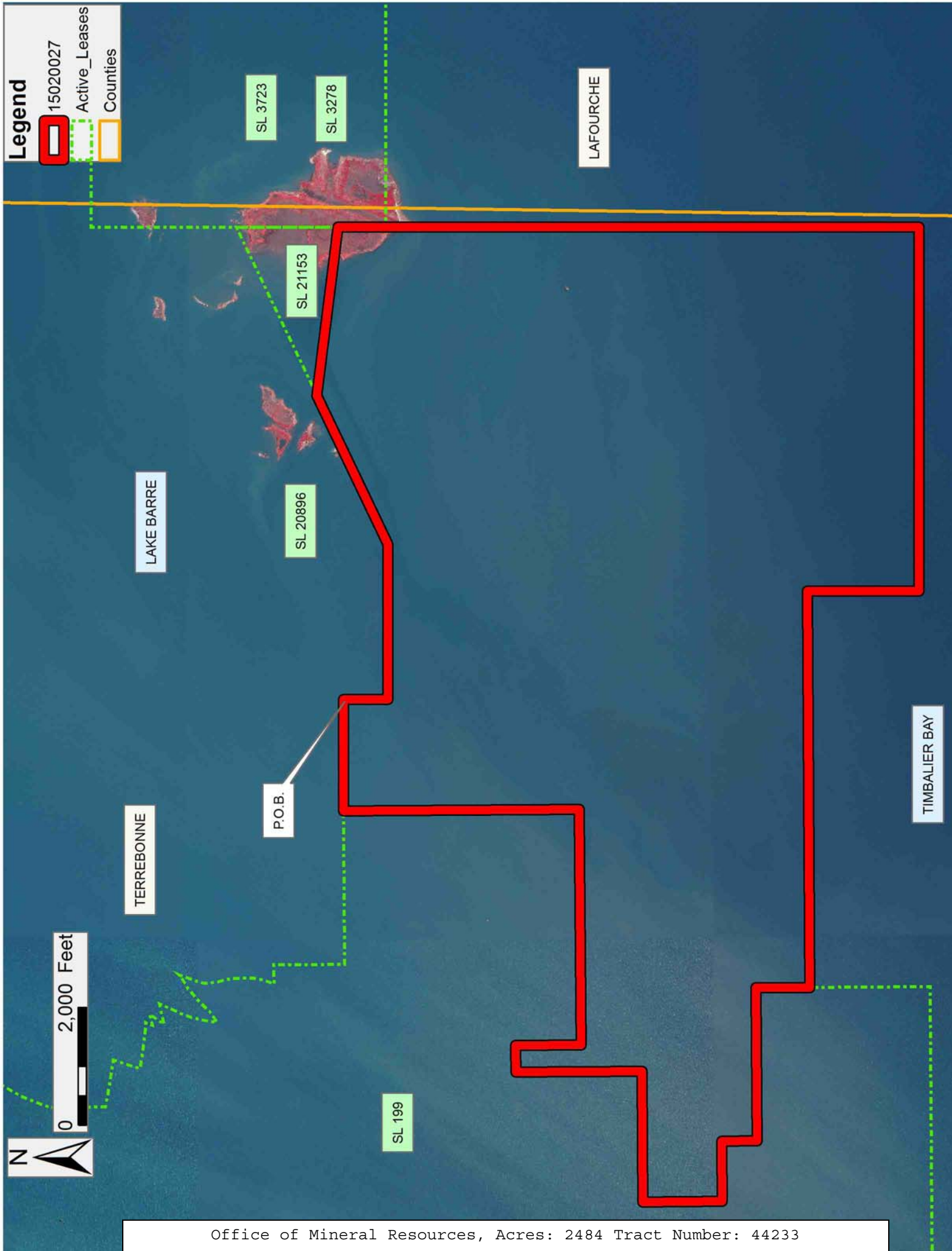
NOTE: The above description of the Tract nominated for the purpose of acquiring a mineral lease or a geophysical agreement has been provided and corrected, where required, exclusively by the nominating party. Any mineral lease or geophysical agreement selected from this Tract and awarded by the Louisiana State Mineral and Energy Board shall be without warranty of any kind, either express, implied or statutory including, but not limited to, title or the implied warranties of merchantability and fitness for a particular purpose.

An error or omission in the nominating party's Tract description may require that a State mineral lease or geophysical agreement be modified, canceled or abrogated due to the existence of conflicting leases, operating agreements, private claims or other future obligations or conditions within the Tract described. In such case, however, the Louisiana State Mineral and Energy Board shall not be obligated to refund any consideration paid by the Lessee prior to such modification, cancellation or abrogation including, but not limited to, bonuses, rentals and royalties.

NOTE: The State of Louisiana does hereby reserve, and this lease shall be subject to, the imprescriptible right of surface use in the nature of a servitude in favor of the Department of Natural Resources, including its Offices and Commissions, for the sole purpose of implementing, constructing, servicing and maintaining approved coastal zone management and/or restoration projects. Utilization of any and all rights derived under this lease by the mineral lessee, its agents, successors or assigns, shall not interfere with nor hinder the reasonable surface use by the Department of Natural Resources, its Offices or Commissions, as herein above reserved.

Applicant: THEOPHILUS OIL, GAS & LAND SERVICES, LLC

Bidder	Cash Payment	Price/ Acre	Rental	Oil	Gas	Other



TRACT 44234 - Lafourche and Terrebonne Parishes, Louisiana

All of the lands now or formerly constituting the beds and bottoms of all water bodies of every nature and description as to which title is vested in the State of Louisiana, together with all islands arising therein and other lands formed by accretion or by reliction, where allowed by law, excepting tax adjudicated lands, and not presently under mineral lease on February 11, 2015, situated in Lafourche and Terrebonne Parishes, Louisiana, and more particularly described as follows: Beginning at a point having Coordinates of X = 2,307,396.54 and Y = 184,769.00; thence West 10,339.56 feet to a point having Coordinates of X = 2,297,056.98 and Y = 184,769.00; thence North 4,378.19 feet to a point having Coordinates of X = 2,297,056.98 and Y = 189,147.19; thence West 2,852.36 feet to a point having Coordinates of X = 2,294,204.62 and Y = 189,147.19; thence North approximately 7,152.15 feet to the Southwest corner of State Lease No. 3278, as amended, also being the Southwest corner of State Lease No. 3723, as amended; thence East 4,225.00 feet to the Southeast corner of said State Lease No. 3278, also being the Southeast corner of said State Lease No. 3723, also being the Northwest corner of State Lease No. 3599, as amended, having Coordinates of X = 2,298,429.62 and Y = 196,299.34; thence South 49 degrees 19 minutes 18 seconds East 11,823.77 feet along the Western boundary of said State Lease No. 3599 to a point having Coordinates of X = 2,307,396.54 and Y = 188,592.47; thence South 3,823.47 feet to the point of beginning, (This tract includes only waterbottoms claimed and owned by the state and specifically excludes any land which the state may claim or own and to which the mineral rights are vested in the state), containing approximately **2,409 acres**, all as more particularly outlined on a plat on file in the Office of Mineral Resources, Department of Natural Resources. All bearings, distances and coordinates are based on Louisiana Coordinate System of 1927, (North or South Zone), where applicable.

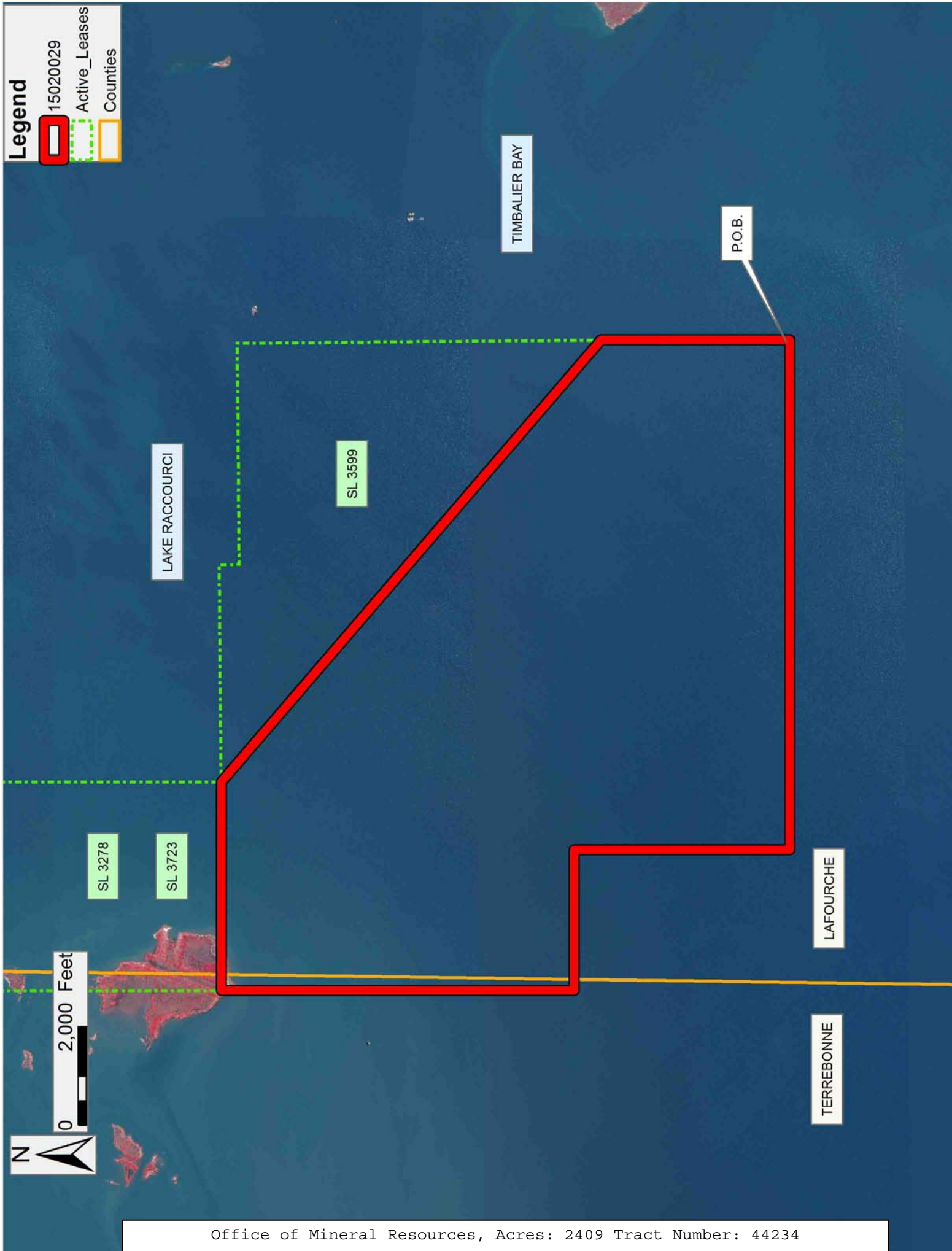
NOTE: The above description of the Tract nominated for the purpose of acquiring a mineral lease or a geophysical agreement has been provided and corrected, where required, exclusively by the nominating party. Any mineral lease or geophysical agreement selected from this Tract and awarded by the Louisiana State Mineral and Energy Board shall be without warranty of any kind, either express, implied or statutory including, but not limited to, title or the implied warranties of merchantability and fitness for a particular purpose.

An error or omission in the nominating party's Tract description may require that a State mineral lease or geophysical agreement be modified, canceled or abrogated due to the existence of conflicting leases, operating agreements, private claims or other future obligations or conditions within the Tract described. In such case, however, the Louisiana State Mineral and Energy Board shall not be obligated to refund any consideration paid by the Lessee prior to such modification, cancellation or abrogation including, but not limited to, bonuses, rentals and royalties.

NOTE: The State of Louisiana does hereby reserve, and this lease shall be subject to, the imprescriptible right of surface use in the nature of a servitude in favor of the Department of Natural Resources, including its Offices and Commissions, for the sole purpose of implementing, constructing, servicing and maintaining approved coastal zone management and/or restoration projects. Utilization of any and all rights derived under this lease by the mineral lessee, its agents, successors or assigns, shall not interfere with nor hinder the reasonable surface use by the Department of Natural Resources, its Offices or Commissions, as herein above reserved.

Applicant: THEOPHILUS OIL, GAS & LAND SERVICES, LLC

Bidder	Cash Payment	Price/ Acre	Rental	Oil	Gas	Other



Legend

- 15020029
- Active_Leases
- Counties

LAKE RACCOURCI

TIMBALIER BAY

P.O.B.

SL 3599

SL 3278

SL 3723

LAFOURCHIE

TERREBONNE