

TRACT 44215 - Caddo and De Soto Parishes, Louisiana

All of the lands now or formerly constituting the beds and bottoms of all water bodies of every nature and description as to which title is vested in the State of Louisiana, together with all islands arising therein and other lands formed by accretion or by reliction, where allowed by law, excepting tax adjudicated lands, and not presently under mineral lease on February 11, 2015, situated in Caddo and De Soto Parishes, Louisiana, and more particularly described as follows: Beginning at a point on the boundary of State Lease No. 20356, having Coordinates of X = 1,620,230.24 and Y = 605,376.80; thence along the boundary of said State Lease No. 20356 the following courses and distances: South 89 degrees 03 minutes 49 seconds East 461.42 feet to a point having Coordinates of X = 1,620,691.60 and Y = 605,369.26 and South 89 degrees 03 minutes 49 seconds East 4,391.69 feet to its Southeast corner, also being a Western corner of State Lease No. 19929, having Coordinates of X = 1,625,082.70 and Y = 605,297.50; thence continue South 89 degrees 03 minutes 49 seconds East 10.24 feet along said State Lease No. 19929 to a point being the Northwest corner of State Lease No. 20800, having Coordinates of X = 1,625,092.94 and Y = 605,297.33; thence along the boundary of said State Lease No. 20800 the following courses and distances: South 00 degrees 40 minutes 19 seconds West 3,422.41 feet to a point having Coordinates of X = 1,625,052.81 and Y = 601,875.16 and South 09 degrees 26 minutes 42 seconds East 1,755.60 feet to a point on the North boundary of said State Lease No. 18371, as amended, having Coordinates of X = 1,625,340.90 and Y = 600,143.36; thence North 89 degrees 16 minutes 30 seconds West 5,173.61 feet along the boundary of said State Lease No. 18371 to a point having Coordinates of X = 1,620,167.70 and Y = 600,208.82; thence North 00 degrees 41 minutes 36 seconds East 5,168.36 feet to the point of beginning, containing approximately **362.825 acres**, all as more particularly outlined on a plat on file in the Office of Mineral Resources, Department of Natural Resources. All bearings, distances and coordinates are based on Louisiana Coordinate System of 1927, (North or South Zone), where applicable.

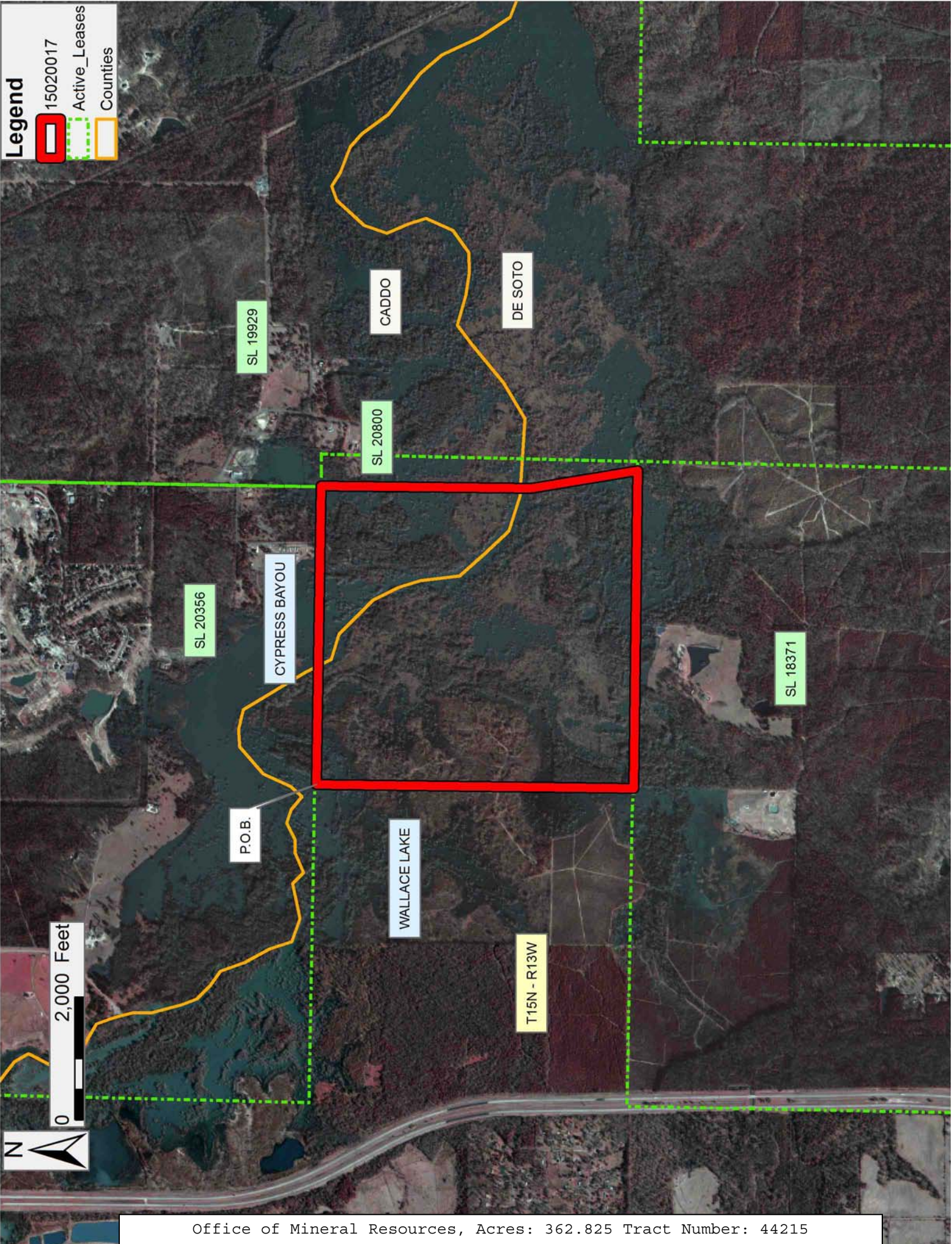
NOTE: The above description of the Tract nominated for the purpose of acquiring a mineral lease or a geophysical agreement has been provided and corrected, where required, exclusively by the nominating party. Any mineral lease or geophysical agreement selected from this Tract and awarded by the Louisiana State Mineral and Energy Board shall be without warranty of any kind, either express, implied or statutory including, but not limited to, title or the implied warranties of merchantability and fitness for a particular purpose.

An error or omission in the nominating party's Tract description may require that a State mineral lease or geophysical agreement be modified, canceled or abrogated due to the existence of conflicting leases, operating agreements, private claims or other future obligations or conditions within the Tract described. In such case, however, the Louisiana State Mineral and Energy Board shall not be obligated to refund any consideration paid by the Lessee prior to such modification,

cancellation or abrogation including, but not limited to, bonuses, rentals and royalties.

Applicant: THEOPHILUS OIL, GAS & LAND SERVICES, LLC

Bidder	Cash Payment	Price/Acre	Rental	Oil	Gas	Other



TRACT 44216 - St. Landry Parish, Louisiana

All of the lands now or formerly constituting the beds and bottoms of all water bodies of every nature and description as to which title is vested in the State of Louisiana, together with all islands arising therein and other lands formed by accretion or by reliction, where allowed by law, excepting tax adjudicated lands, and not presently under mineral lease on February 11, 2015, situated in St. Landry Parish, Louisiana, and more particularly described as follows: Beginning at a point having Coordinates of X = 1,863,115.29 and Y = 763,351.22; thence South 00 degrees 06 minutes 54 seconds East 10,544.80 feet to a point having Coordinates of X = 1,863,136.46 and Y = 752,806.44; thence North 89 degrees 58 minutes 51 seconds West 10,566.69 feet to a point having Coordinates of X = 1,852,569.77 and Y = 752,809.96; thence North 00 degrees 04 minutes 22 seconds West a distance of 5,318.32 feet to a point having Coordinates X = 1,852,563.02 and Y = 758,128.28; thence North 89 degrees 50 minutes 34 seconds East 1,607.30 feet to a point being the Southwest corner of State Lease No. 7716, as amended, having Coordinates of X = 1,854,170.31 and Y = 758,132.69; thence along the boundary of said State Lease No. 7716, as amended, the following: South 89 degrees 54 minutes 36 seconds East 2,656.96 feet to a point having Coordinates of X = 1,856,827.27 and Y = 758,128.52, North 00 degrees 06 minutes 37 seconds West 2,626.38 feet to a point having Coordinates of X = 1,856,822.22 and Y = 760,754.90, and North 89 degrees 54 minutes 36 seconds West 2,649.88 feet to a point being its Northwest corner having Coordinates of X = 1,854,172.34 and Y = 760,759.06; thence North 89 degrees 54 minutes 36 seconds West 1,614.67 feet to a point having Coordinates of X = 1,852,557.67 and Y = 760,761.60, said point being the Southeast corner of State Lease No. 7715, as amended; thence North 00 degrees 04 minutes 38 seconds East 2,538.89 feet along the boundary of said State Lease No. 7715, as amended, to a point being its Northeast corner having Coordinates of X = 1,852,554.25 and Y = 763,300.49; thence North 89 degrees 43 minutes 29 seconds East 10,561.16 feet to the point of beginning, containing approximately **28 acres**, all as more particularly outlined on a plat on file in the Office of Mineral Resources, Department of Natural Resources. All bearings, distances and coordinates are based on Louisiana Coordinate System of 1927, (North or South Zone), where applicable.

NOTE: The above description of the Tract nominated for the purpose of acquiring a mineral lease or a geophysical agreement has been provided and corrected, where required, exclusively by the nominating party. Any mineral lease or geophysical agreement selected from this Tract and awarded by the Louisiana State Mineral and Energy Board shall be without warranty of any kind, either express, implied or statutory including, but not limited to, title or the implied warranties of merchantability and fitness for a particular purpose.

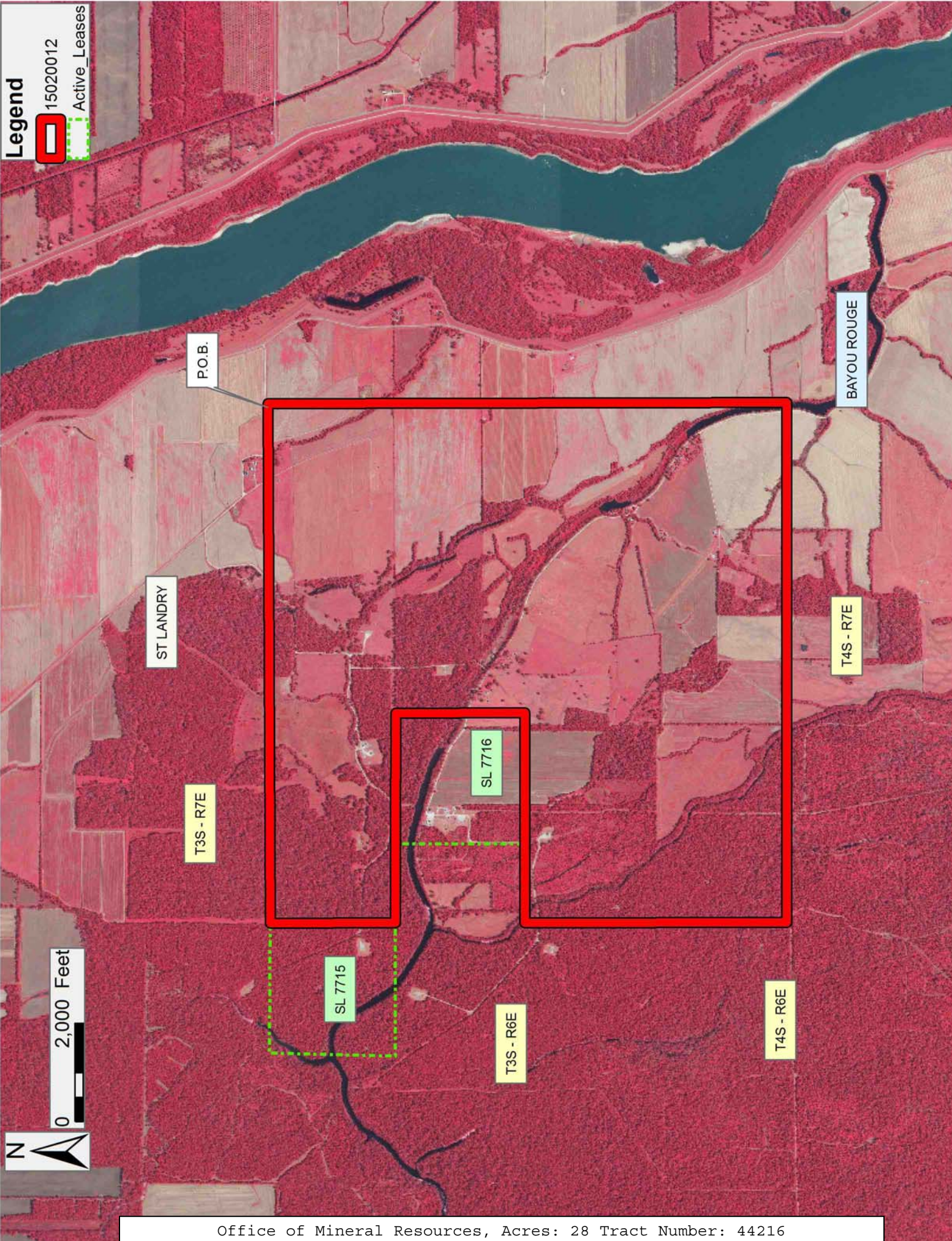
An error or omission in the nominating party's Tract description may require that a State mineral lease or geophysical agreement be modified, canceled or abrogated due to the existence of conflicting leases,

operating agreements, private claims or other future obligations or conditions within the Tract described. In such case, however, the Louisiana State Mineral and Energy Board shall not be obligated to refund any consideration paid by the Lessee prior to such modification, cancellation or abrogation including, but not limited to, bonuses, rentals and royalties.

Applicant: RICHARD LYONS & ASSOCIATES, LLC

Bidder	Cash Payment	Price/Acre	Rental	Oil	Gas	Other

Legend
15020012
Active_Leases



TRACT 44217 - Jefferson Parish, Louisiana

All of the lands now or formerly constituting the beds and bottoms of all water bodies of every nature and description as to which title is vested in the State of Louisiana, together with all islands arising therein and other lands formed by accretion or by reliction, where allowed by law, excepting tax adjudicated lands, and not presently under mineral lease on February 11, 2015, situated in Jefferson Parish, Louisiana, and more particularly described as follows: Beginning at a point having Coordinates of X = 2,372,133.00 and Y = 399,084.00; thence East 18,480.00 feet to a point having Coordinates of X = 2,390,613.00 and Y = 399,084.00; thence South 18,480.00 feet to a point having Coordinates of X = 2,390,613.00 and Y = 380,604.00; thence West 18,480.00 feet to a point having Coordinates of X = 2,372,133.00 and Y = 380,604.00; thence North 18,480.00 feet to the point of beginning, **LESS AND EXCEPT** all that portion of State Lease No. 20431, as amended that lies within the boundary of the above described tract, more particularly described as follows: Commencing at the point of beginning of the above described tract having Coordinates of X = 2,372,133.00 and Y = 399,084.00; thence South 43 degrees 09 minutes 50 seconds East 18,982.75 feet to the Northwest corner of said State Lease No. 20431 having Coordinates of X = 2,385,118.86 and Y = 385,237.98; thence along the boundary of said State Lease No. 20431 the following courses: Northeasterly across Bayou Barataria through the following Coordinates: X = 2,385,123.17 and Y = 385,240.78, X = 2,385,167.60 and Y = 385,267.35, X = 2,385,270.33 and Y = 385,326.36, X = 2,385,314.30 and Y = 385,350.73, X = 2,385,347.60 and Y = 385,368.21, X = 2,385,392.81 and Y = 385,390.32, X = 2,385,453.26 and Y = 385,420.35, X = 2,385,504.42 and Y = 385,442.14, X = 2,385,532.79 and Y = 385,452.94, X = 2,385,583.73 and Y = 385,469.67, X = 2,385,610.92 and Y = 385,476.37, X = 2,385,610.14 and Y = 385,458.94, X = 2,385,617.75 and Y = 385,454.34, X = 2,385,631.35 and Y = 385,462.68, X = 2,385,637.46 and Y = 385,463.63, X = 2,385,646.58 and Y = 385,464.91, X = 2,385,655.76 and Y = 385,466.00, X = 2,385,660.41 and Y = 385,466.47, X = 2,385,669.93 and Y = 385,467.28, X = 2,385,674.82 and Y = 385,467.61, X = 2,385,682.39 and Y = 385,468.02, X = 2,385,691.14 and Y = 385,468.33, X = 2,385,691.53 and Y = 385,461.15, X = 2,385,700.90 and Y = 385,461.37 and X = 2,385,718.75 and Y = 385,461.91, being a point on the left descending bank of said Bayou Barataria; Thence southeasterly along said left descending bank through the following Coordinates: X = 2,385,740.10 and Y = 385,443.89, X = 2,385,802.12 and Y = 385,394.54, X = 2,385,833.44 and Y = 385,369.20, X = 2,385,860.14 and Y = 385,366.58, X = 2,385,884.29 and Y = 385,334.91, X = 2,385,877.33 and Y = 385,304.40, X = 2,385,965.69 and Y = 385,137.73, X = 2,385,959.18 and Y = 385,113.89 and X = 2,385,969.88 and Y = 385,076.27, being the most northerly corner of State Operating Agreement AO 0271; thence southwesterly across Bayou Barataria along the upper boundary of said AO 0271 through the following Coordinates: X = 2,385,832.92 and Y = 385,069.59, X = 2,385,633.82 and Y = 385,024.51, X = 2,385,506.10 and Y = 384,979.43 and X = 2,385,371.95 and Y = 384,910.67, being the most westerly corner of said AO 0271, also being a point on the right descending bank of Bayou Barataria; thence northwesterly along said right descending bank of Bayou Barataria through

the following Coordinates: X = 2,385,327.52 Y = 384,973.09, X = 2,385,250.20 Y = 385,003.16, X = 2,385,172.89 Y = 385,153.50, X = 2,385,129.93 Y = 385,226.53 and X = 2,385,118.86 Y = 385,237.98, being its point of beginning, ALSO **LESS AND EXCEPT** all that portion of Operating Agreement AO 0271 that lies within the above described tract, and more particularly described as follows: Commencing at the point of beginning of the above described tract having Coordinates of X = 2,372,133.00 and Y = 399,084.00; thence South 42 degrees 39 minutes 47 seconds East 20,689.52 feet to the Southwest corner of said AO 0271 having Coordinates of X = 2,386,154.02 and Y = 383,869.95; thence along the boundary of said AO 0271 the following courses: North 41 degrees 16 minutes 07 seconds West 101.06 feet to a point; thence North 36 degrees 49 minutes 41 seconds West 172.76 feet to a point; thence North 36 degrees 49 minutes 41 seconds West 793.90 feet to a point; thence North 35 degrees 26 minutes 45 seconds West 234.47 feet to a point; thence North 62 degrees 51 minutes 44 seconds East 150.74 feet to a point; thence North 70 degrees 33 minutes 36 seconds East 135.44 feet to a point; thence North 77 degrees 14 minutes 33 seconds East 204.14 feet to a point; thence North 87 degrees 12 minutes 26 seconds East 137.12 feet to a point; thence South 37 degrees 49 minutes 24 seconds West 20.64 feet to a point; thence South 30 degrees 32 minutes 28 seconds East 66.72 feet to a point; thence South 37 degrees 12 minutes 01 seconds East 154.68 feet to a point; thence South 28 degrees 35 minutes 07 seconds East 29.34 feet to a point; thence South 26 degrees 22 minutes 20 seconds East 130.25 feet to a point; thence North 64 degrees 40 minutes 02 seconds East 19.11 feet to a point; thence South 33 degrees 15 minutes 41 seconds East 297.45 feet to a point; thence South 29 degrees 55 minutes 39 seconds East 27.17 feet to a point; thence South 36 degrees 20 minutes 30 seconds East 99.95 feet to a point; thence South 27 degrees 12 minutes 25 seconds East 65.89 feet to a point; thence South 45 degrees 53 minutes 06 seconds East 10.67 feet to a point; thence South 45 degrees 53 minutes 06 seconds East 68.56 feet to a point; thence South 45 degrees 10 minutes 40 seconds East 10.10 feet to a point; thence South 45 degrees 10 minutes 40 seconds East 73.13 feet to a point; thence South 45 degrees 12 minutes 12 seconds East 73.13 feet to a point; thence South 38 degrees 52 minutes 06 seconds East 100.37 feet to a point; thence South 34 degrees 43 minutes 54 seconds East 41.77 feet to a point; thence South 62 degrees 48 minutes 12 seconds West 40.15 feet to a point; thence South 71 degrees 38 minutes 22 seconds West 531.80 feet to its point of beginning, the nominated tract containing approximately **949 acres**, all as more particularly outlined on a plat on file in the Office of Mineral Resources, Department of Natural Resources. All bearings, distances and coordinates are based on Louisiana Coordinate System of 1927, (North or South Zone), where applicable.

NOTE: The above description of the Tract nominated for the purpose of acquiring a mineral lease or a geophysical agreement has been provided and corrected, where required, exclusively by the nominating party. Any mineral lease or geophysical agreement selected from this Tract and awarded by the Louisiana State Mineral and Energy Board shall be without warranty of any kind, either express, implied or statutory including, but

not limited to, title or the implied warranties of merchantability and fitness for a particular purpose.

An error or omission in the nominating party's Tract description may require that a State mineral lease or geophysical agreement be modified, canceled or abrogated due to the existence of conflicting leases, operating agreements, private claims or other future obligations or conditions within the Tract described. In such case, however, the Louisiana State Mineral and Energy Board shall not be obligated to refund any consideration paid by the Lessee prior to such modification, cancellation or abrogation including, but not limited to, bonuses, rentals and royalties.

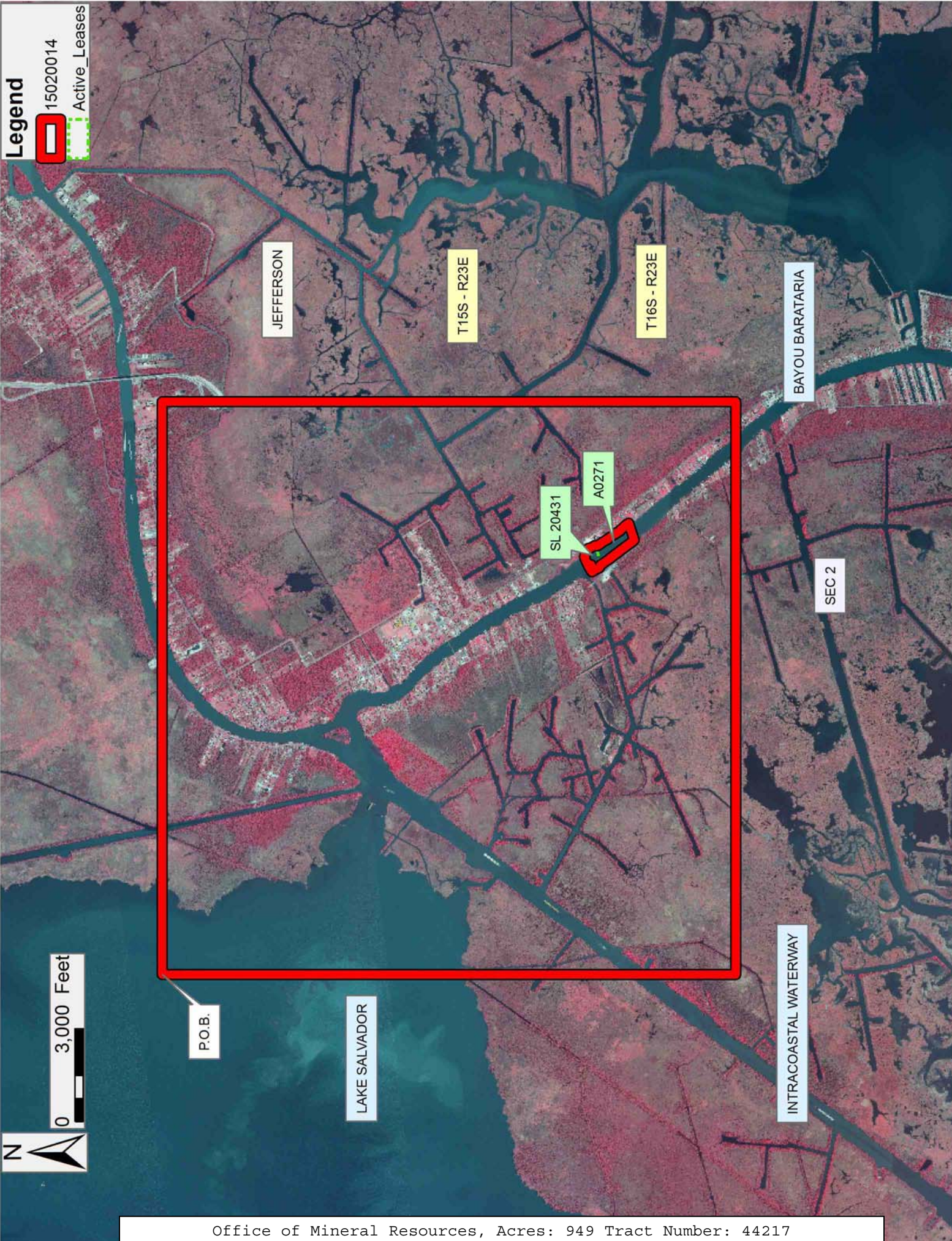
NOTE: The State of Louisiana does hereby reserve, and this lease shall be subject to, the imprescriptible right of surface use in the nature of a servitude in favor of the Department of Natural Resources, including its Offices and Commissions, for the sole purpose of implementing, constructing, servicing and maintaining approved coastal zone management and/or restoration projects. Utilization of any and all rights derived under this lease by the mineral lessee, its agents, successors or assigns, shall not interfere with nor hinder the reasonable surface use by the Department of Natural Resources, its Offices or Commissions, as herein above reserved.

Applicant: IHDW PET. CO.

Bidder	Cash Payment	Price/Acre	Rental	Oil	Gas	Other

Legend

- 15020014
- Active_Leases



TRACT 44218 - St. Charles Parish, Louisiana

All of the lands now or formerly constituting the beds and bottoms of all water bodies of every nature and description as to which title is vested in the State of Louisiana, together with all islands arising therein and other lands formed by accretion or by reliction, where allowed by law, excepting tax adjudicated lands, and not presently under mineral lease on February 11, 2015, situated in St. Charles Parish, Louisiana, and more particularly described as follows: Beginning at a point having Coordinates of X = 2,351,414.00 and Y = 387,056.00; thence South 11,232.00 feet to a point having Coordinates of X = 2,351,414.00 and Y = 375,824.00; thence West 11,479.00 feet to a point on the boundary of State Lease No. 19232, as amended having Coordinates of X = 2,339,935.00 and Y = 375,824.00; thence along the boundary of said State Lease No. 19232 the following courses: North 1,186.33 feet to a point having Coordinates of X = 2,339,935.00 and Y = 377,010.33, East 1,858.53 feet to a point having Coordinates of X = 2,341,793.53 and Y = 377,010.33 and North 1,076.20 feet to the Easternmost Southeast corner of State Lease No. 19205 having Coordinates of X = 2,341,793.53 and Y = 378,086.53; thence North 05 degrees 25 minutes 05 seconds East 1,851.70 feet along the boundary of said State Lease No. 19205 to its Easternmost Northeast corner and a Southeast corner of said State Lease No. 19232 having Coordinates of X = 2,341,968.37 and Y = 379,929.96; thence along the boundary of said State Lease No. 19232 the following courses: North 05 degrees 25 minutes 05 seconds East 665.01 feet to a point having Coordinates of X = 2,342,031.16 and Y = 380,592.00, East 3,478.84 feet to a point having Coordinates of X = 2,345,510.00 and Y = 380,592.00 and North 330.61 feet to the Southeast corner of State Lease No. 19204 having Coordinates of X = 2,345,510.00 and Y = 380,922.61; thence North 1,023.13 feet along the boundary of said State Lease No. 19204 to its Northeast corner and the Southeast corner of State Lease No. 19203 having Coordinates of X = 2,345,510.00 and Y = 381,945.74; thence along the boundary of said State Lease No. 19203 the following courses: North 1,807.05 feet to a point having Coordinates of X = 2,345,510.00 and Y = 383,752.79 and North 45 degrees 13 minutes 17 seconds West 851.17 feet to its Northernmost corner and a Northeast corner of said State Lease No. 19232 having Coordinates of X = 2,344,905.81 and Y = 384,352.33; thence South 87 degrees 35 minutes 51 seconds West 3,551.67 feet and South 87 degrees 35 minutes 52 seconds West 477.86 feet along the boundary of said State Lease No. 19232 to its Northernmost Northwest corner having Coordinates of X = 2,340,879.82 and Y = 384,183.42; thence North 2,872.58 feet to a point having Coordinates of X = 2,340,879.82 and Y = 387,056.00; thence East 10,534.18 feet to the point of beginning, containing approximately **2,272.28 acres**, all as more particularly outlined on a plat on file in the Office of Mineral Resources, Department of Natural Resources. All bearings, distances and coordinates are based on Louisiana Coordinate System of 1927, (North or South Zone), where applicable.

NOTE: The above description of the Tract nominated for the purpose of acquiring a mineral lease or a geophysical agreement has been provided and

corrected, where required, exclusively by the nominating party. Any mineral lease or geophysical agreement selected from this Tract and awarded by the Louisiana State Mineral and Energy Board shall be without warranty of any kind, either express, implied or statutory including, but not limited to, title or the implied warranties of merchantability and fitness for a particular purpose.

An error or omission in the nominating party's Tract description may require that a State mineral lease or geophysical agreement be modified, canceled or abrogated due to the existence of conflicting leases, operating agreements, private claims or other future obligations or conditions within the Tract described. In such case, however, the Louisiana State Mineral and Energy Board shall not be obligated to refund any consideration paid by the Lessee prior to such modification, cancellation or abrogation including, but not limited to, bonuses, rentals and royalties.

NOTE: The State of Louisiana does hereby reserve, and this lease shall be subject to, the imprescriptible right of surface use in the nature of a servitude in favor of the Department of Natural Resources, including its Offices and Commissions, for the sole purpose of implementing, constructing, servicing and maintaining approved coastal zone management and/or restoration projects. Utilization of any and all rights derived under this lease by the mineral lessee, its agents, successors or assigns, shall not interfere with nor hinder the reasonable surface use by the Department of Natural Resources, its Offices or Commissions, as herein above reserved.

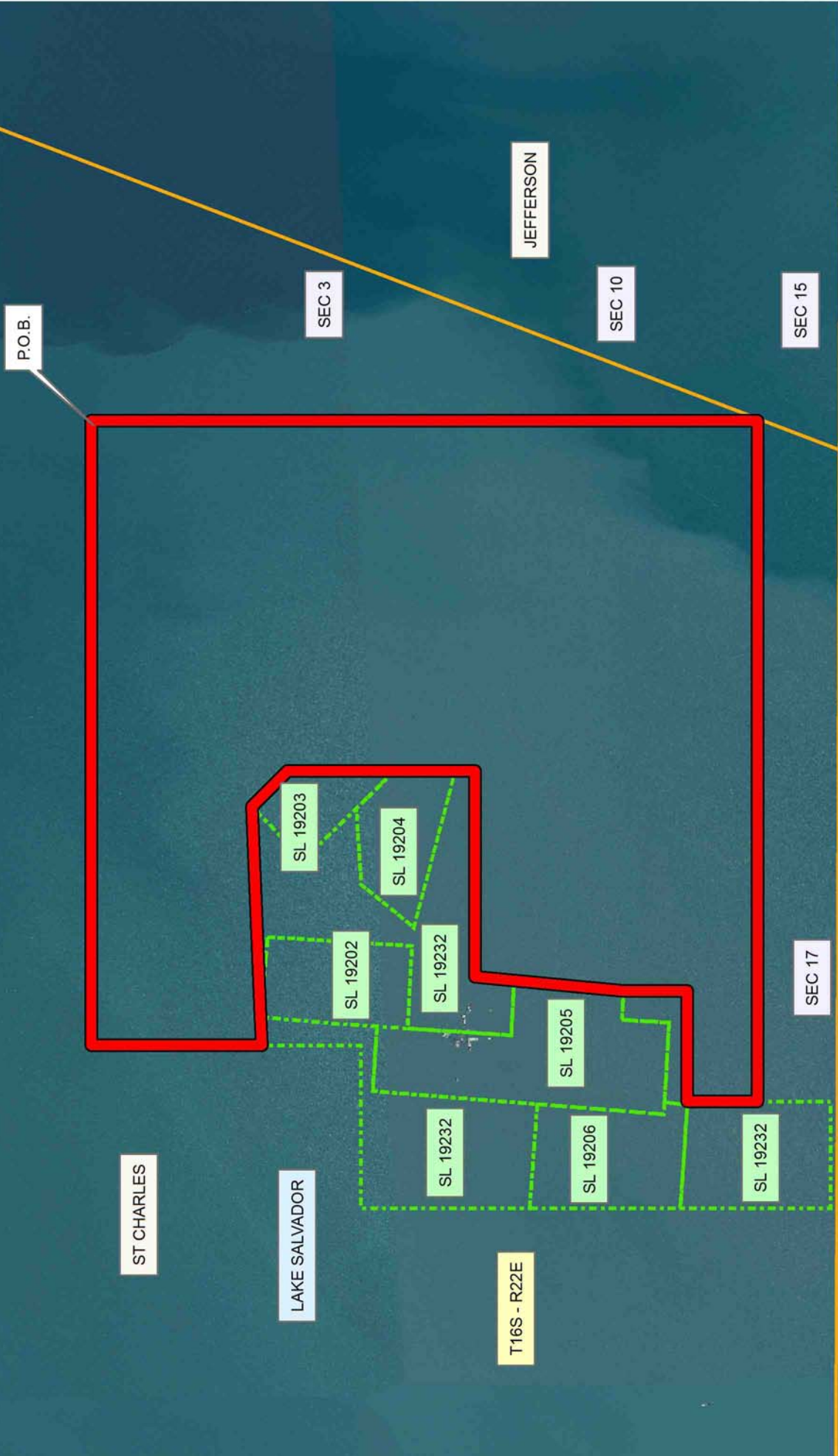
Applicant: LARRY S. MINTER, INC.

Bidder	Cash Payment	Price/Acre	Rental	Oil	Gas	Other

Legend

- 15020003
- Active_Leases
- Counties

0 2,000 Feet



TRACT 44219 - Lafourche and St. Charles Parishes, Louisiana

All of the lands now or formerly constituting the beds and bottoms of all water bodies of every nature and description as to which title is vested in the State of Louisiana, together with all islands arising therein and other lands formed by accretion or by reliction, where allowed by law, excepting tax adjudicated lands, and not presently under mineral lease on February 11, 2015, situated in Lafourche and St. Charles Parishes, Louisiana, and more particularly described as follows: Beginning at a point having Coordinates of X = 2,346,400.00 and Y = 375,824.00; thence South 9,273.00 feet to a point having Coordinates of X = 2,346,400.00 and Y = 366,551.00; thence West 12,000.00 feet to a point having Coordinates of X = 2,334,400.00 and Y = 366,551.00; thence North 7,554.00 feet to a point on the boundary of State Lease No. 19201 having Coordinates of X = 2,334,400.00 and Y = 374,105.00; thence along the boundary of said State Lease No. 19201 the following courses: South 40 degrees 57 minutes 13 seconds East 4,108.63 feet to a point having Coordinates of X = 2,337,093.00 and Y = 371,002.00, North 73 degrees 38 minutes 34 seconds East 898.36 feet to a point having Coordinates of X = 2,337,955.00 and Y = 371,255.00 and North 20 degrees 42 minutes 15 seconds West 4,884.45 feet to the Southwest corner of State Lease No. 20851 having Coordinates of X = 2,336,228.13 and Y = 375,824.00; thence East 1,906.87 feet along the boundary of said State Lease No. 20851 to its Southeast corner and a point on the boundary of State Lease No. 19232, as amended having Coordinates of X = 2,338,135.00 and Y = 375,824.00; thence along the boundary of said State Lease No. 19232 the following courses: South 1,233.67 feet to a point having Coordinates of X = 2,338,135.00 and Y = 374,590.33, East 1,800.00 feet to a point having Coordinates of X = 2,339,935.00 and Y = 374,590.33 and North 1,233.67 feet to a point having Coordinates of X = 2,339,935.00 and Y = 375,824.00; thence East 6,465.00 feet to the point of beginning, containing approximately **2,299.02 acres**, all as more particularly outlined on a plat on file in the Office of Mineral Resources, Department of Natural Resources. All bearings, distances and coordinates are based on Louisiana Coordinate System of 1927, (North or South Zone), where applicable.

NOTE: The above description of the Tract nominated for the purpose of acquiring a mineral lease or a geophysical agreement has been provided and corrected, where required, exclusively by the nominating party. Any mineral lease or geophysical agreement selected from this Tract and awarded by the Louisiana State Mineral and Energy Board shall be without warranty of any kind, either express, implied or statutory including, but not limited to, title or the implied warranties of merchantability and fitness for a particular purpose.

An error or omission in the nominating party's Tract description may require that a State mineral lease or geophysical agreement be modified, canceled or abrogated due to the existence of conflicting leases, operating agreements, private claims or other future obligations or conditions within the Tract described. In such case, however, the

Louisiana State Mineral and Energy Board shall not be obligated to refund any consideration paid by the Lessee prior to such modification, cancellation or abrogation including, but not limited to, bonuses, rentals and royalties.

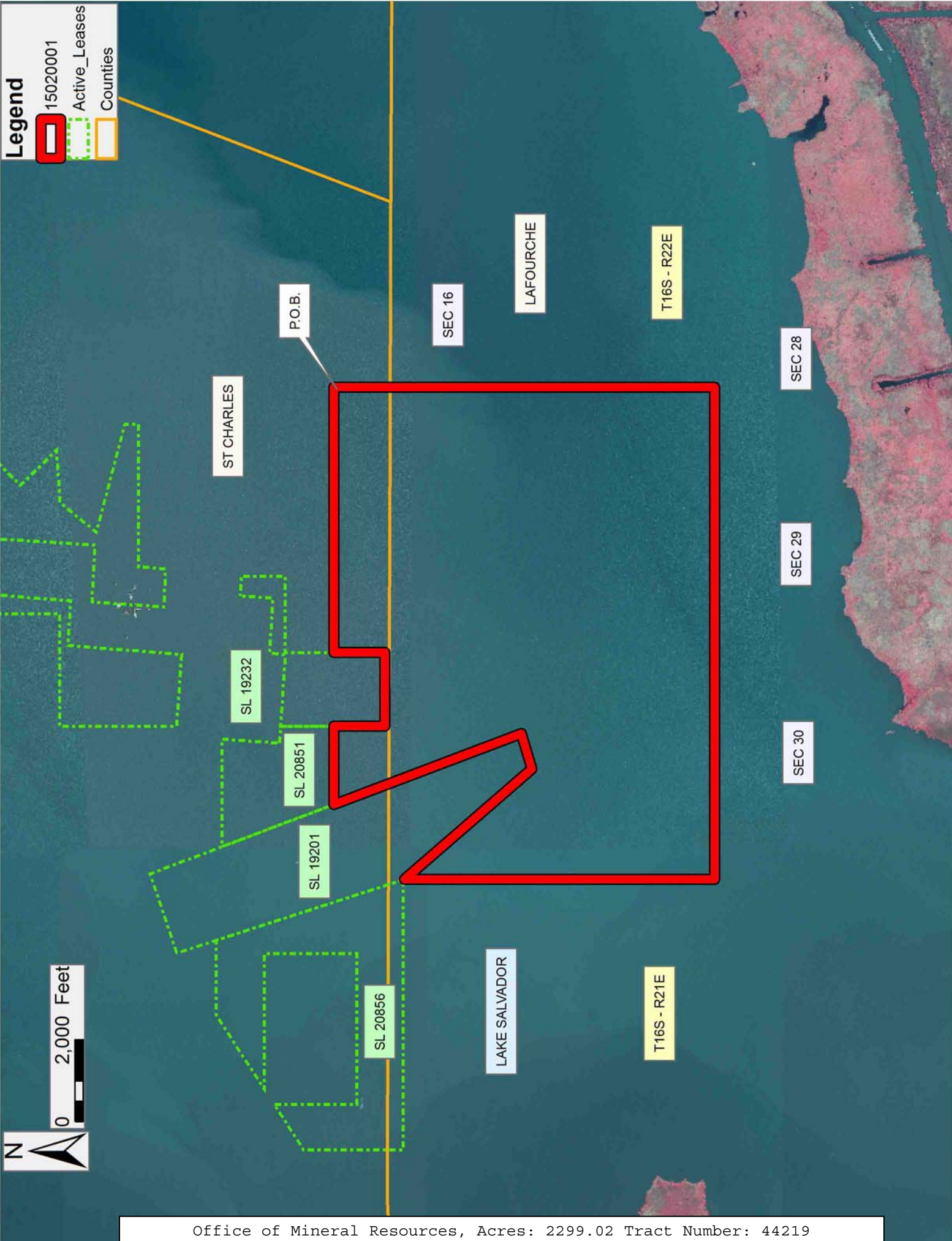
NOTE: The State of Louisiana does hereby reserve, and this lease shall be subject to, the imprescriptible right of surface use in the nature of a servitude in favor of the Department of Natural Resources, including its Offices and Commissions, for the sole purpose of implementing, constructing, servicing and maintaining approved coastal zone management and/or restoration projects. Utilization of any and all rights derived under this lease by the mineral lessee, its agents, successors or assigns, shall not interfere with nor hinder the reasonable surface use by the Department of Natural Resources, its Offices or Commissions, as herein above reserved.

Applicant: LARRY S. MINTER, INC.

Bidder	Cash Payment	Price/Acre	Rental	Oil	Gas	Other

Legend

- 15020001
- Active_Leases
- Counties



P.O.B.

ST CHARLES

SEC 16

LAFOURCHE

T16S - R22E

SEC 28

SEC 29

SEC 30

SL 19232

SL 20851

SL 19201

SL 20856

LAKE SALVADOR

T16S - R21E

0 2,000 Feet



TRACT 44220 - Lafourche Parish, Louisiana

All of the lands now or formerly constituting the beds and bottoms of all water bodies of every nature and description as to which title is vested in the State of Louisiana, together with all islands arising therein and other lands formed by accretion or by reliction, where allowed by law, excepting tax adjudicated lands, and not presently under mineral lease on February 11, 2015, situated in Lafourche Parish, Louisiana, and more particularly described as follows: Beginning at a point having Coordinates of X = 2,334,400.00 and Y = 363,216.00; thence West 11,777.00 feet to a point having Coordinates of X = 2,322,623.00 and Y = 363,216.00; thence North 3,468.26 feet to a point on the boundary of State Lease No. 20877 having Coordinates of X = 2,322,623.00 and Y = 366,684.26; thence East 260.10 feet along the boundary of said State Lease No. 20877 to its Southeast corner and the Southwest corner of State Lease No. 21342 having Coordinates of X = 2,322,883.10 and Y = 366,684.26; thence along the boundary of said State Lease No. 21342 the following courses: East 4,281.60 feet to a point having Coordinates of X = 2,327,164.70 and Y = 366,684.26 and North 1,785.31 feet to the Southwest corner of State Lease No. 21411 having Coordinates of X = 2,327,164.70 and Y = 368,469.57; thence along the boundary of said State Lease No. 21411 the following courses: East 1,388.30 feet to a point having Coordinates of X = 2,328,553.00 and Y = 368,469.57 and North 2,397.43 feet to the Southwest corner of State Lease No. 21412 having Coordinates of X = 2,328,553.00 and Y = 370,867.00; thence along the boundary of said State Lease No. 21412 the following courses: East 2,479.65 feet to a point having Coordinates of X = 2,331,032.65 and Y = 370,867.00, North 2,533.00 feet to a point having Coordinates of X = 2,331,032.65 and Y = 373,400.00, South 35 degrees 03 minutes 11 seconds West 223.39 feet to a point having Coordinates of X = 2,330,904.35 and Y = 373,217.13, South 57 degrees 08 minutes 30 seconds West 2,198.51 feet to a point having Coordinates of X = 2,329,057.57 and Y = 372,024.30 and West 504.57 feet to its Northwest corner and the Northeast corner of said State Lease No. 21411 having Coordinates of X = 2,328,553.00 and Y = 372,024.30; thence West 1,388.30 feet along the boundary of said State Lease No. 21411 to its Northwest corner and a point on the boundary of said State Lease No. 20877 having Coordinates of X = 2,327,164.70 and Y = 372,024.30; thence along the boundary of said State Lease No. 20877 the following courses: North 429.07 feet to a point having Coordinates of X = 2,327,164.70 and Y = 372,453.37, West 2,755.70 feet to a point having Coordinates of X = 2,324,409.00 and Y = 372,453.37 and North 1,679.63 feet to the Southwest corner of State Lease No. 21063 having Coordinates of X = 2,324,409.00 and Y = 374,133.00; thence East 1,696.95 feet along the boundary of said State Lease No. 21063 to its Southeast corner and the Southwest corner of State Lease No. 21064 having Coordinates of X = 2,326,105.95 and Y = 374,133.00; thence East 1,696.96 feet along the boundary of said State Lease No. 21064 to its Southeast corner and the Southwest corner of State Lease No. 20856 having Coordinates of X = 2,327,802.91 and Y = 374,133.00; thence East 6,588.01 feet along the boundary of said State Lease No. 20856 to its Southeast corner and a point on the boundary of State Lease No. 19201 having

Coordinates of X = 2,334,390.92 and Y = 374,133.00; thence South 17 degrees 57 minutes 47 seconds East 29.44 feet along the boundary of said State Lease No. 19201 to a point having Coordinates of X = 2,334,400.00 and Y = 374,105.00; thence South 10,889.00 feet to the point of beginning, (This lease includes only waterbottoms claimed and owned by the state and specifically excludes any School Indemnity land located within the above described tract) containing approximately **1,969 acres**, all as more particularly outlined on a plat on file in the Office of Mineral Resources, Department of Natural Resources. All bearings, distances and coordinates are based on Louisiana Coordinate System of 1927, (North or South Zone), where applicable.

NOTE: The above description of the Tract nominated for the purpose of acquiring a mineral lease or a geophysical agreement has been provided and corrected, where required, exclusively by the nominating party. Any mineral lease or geophysical agreement selected from this Tract and awarded by the Louisiana State Mineral and Energy Board shall be without warranty of any kind, either express, implied or statutory including, but not limited to, title or the implied warranties of merchantability and fitness for a particular purpose.

An error or omission in the nominating party's Tract description may require that a State mineral lease or geophysical agreement be modified, canceled or abrogated due to the existence of conflicting leases, operating agreements, private claims or other future obligations or conditions within the Tract described. In such case, however, the Louisiana State Mineral and Energy Board shall not be obligated to refund any consideration paid by the Lessee prior to such modification, cancellation or abrogation including, but not limited to, bonuses, rentals and royalties.

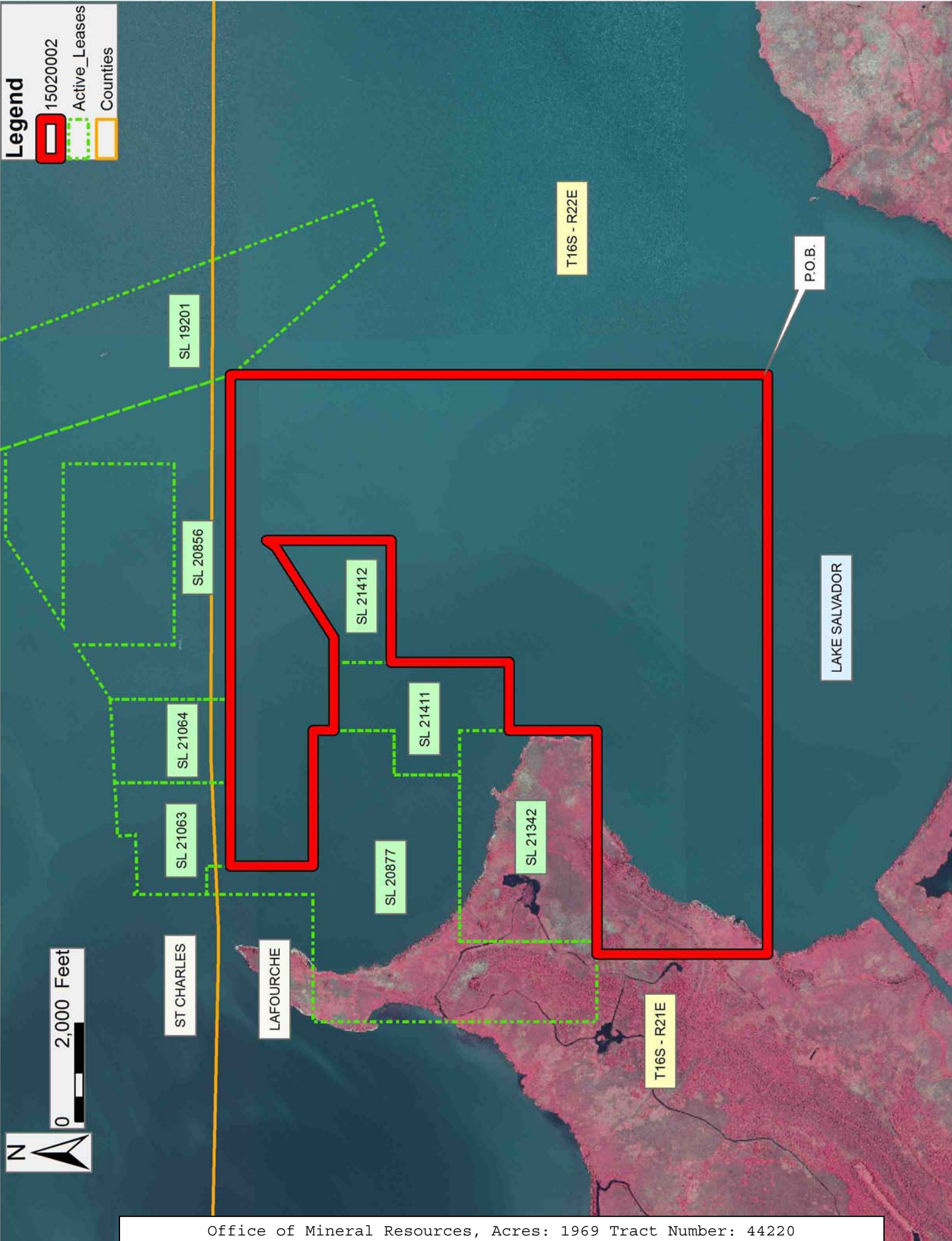
NOTE: The State of Louisiana does hereby reserve, and this lease shall be subject to, the imprescriptible right of surface use in the nature of a servitude in favor of the Department of Natural Resources, including its Offices and Commissions, for the sole purpose of implementing, constructing, servicing and maintaining approved coastal zone management and/or restoration projects. Utilization of any and all rights derived under this lease by the mineral lessee, its agents, successors or assigns, shall not interfere with nor hinder the reasonable surface use by the Department of Natural Resources, its Offices or Commissions, as herein above reserved.

Applicant: LARRY S. MINTER, INC.

Bidder	Cash Payment	Price/Acre	Rental	Oil	Gas	Other

Legend

- 15020002
- Active_Leases
- Counties



TRACT 44221 - Vermilion Parish, Louisiana

All of the lands now or formerly constituting the beds and bottoms of all water bodies of every nature and description as to which title is vested in the State of Louisiana, together with all islands arising therein and other lands formed by accretion or by reliction, where allowed by law, excepting tax adjudicated lands, and not presently under mineral lease on February 11, 2015, situated in Vermilion Parish, Louisiana, and more particularly described as follows: Beginning at a point having Coordinates of X = 1,707,584.55 and Y = 353,453.53; thence South 00 degrees 33 minutes 35 seconds West 5,276.47 feet to a point having Coordinates of X = 1,707,533.01 and Y = 348,177.31; thence North 89 degrees 35 minutes 05 seconds West 5,752.10 feet to a point having Coordinates of X = 1,701,781.06 and Y = 348,218.99; thence South 00 degrees 28 minutes 03 seconds West 5,277.72 feet to a point having Coordinates of X = 1,701,737.98 and Y = 342,941.45; thence North 89 degrees 35 minutes 45 seconds West 5,735.15 feet to a point having Coordinates of X = 1,696,002.98 and Y = 342,981.92; thence North 00 degrees 28 minutes 03 seconds East 5,278.81 feet to a point having Coordinates of X = 1,696,046.06 and Y = 348,260.56; thence North 00 degrees 28 minutes 03 seconds East 5,283.07 feet to a point having Coordinates of X = 1,696,089.18 and Y = 353,543.45; thence South 89 degrees 31 minutes 28 seconds East 5,329.83 feet to a point having Coordinates of X = 1,701,418.82 and Y = 353,499.21; thence South 89 degrees 34 minutes 32 seconds East 6165.90 feet to the point of beginning, containing approximately **1 acres**, all as more particularly outlined on a plat on file in the Office of Mineral Resources, Department of Natural Resources. All bearings, distances and coordinates are based on Louisiana Coordinate System of 1927, (North or South Zone), where applicable.

NOTE: The above description of the Tract nominated for the purpose of acquiring a mineral lease or a geophysical agreement has been provided and corrected, where required, exclusively by the nominating party. Any mineral lease or geophysical agreement selected from this Tract and awarded by the Louisiana State Mineral and Energy Board shall be without warranty of any kind, either express, implied or statutory including, but not limited to, title or the implied warranties of merchantability and fitness for a particular purpose.

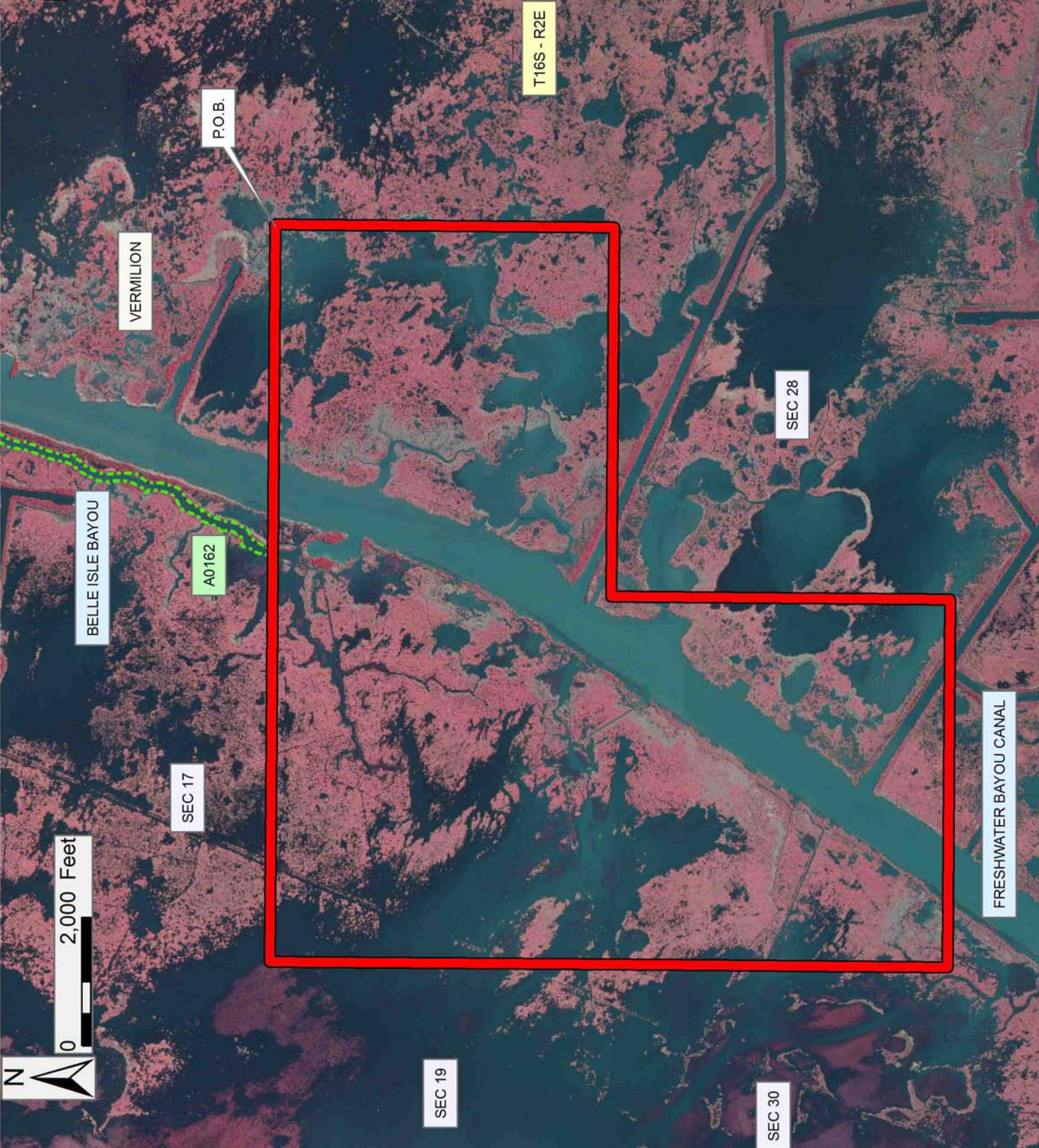
An error or omission in the nominating party's Tract description may require that a State mineral lease or geophysical agreement be modified, canceled or abrogated due to the existence of conflicting leases, operating agreements, private claims or other future obligations or conditions within the Tract described. In such case, however, the Louisiana State Mineral and Energy Board shall not be obligated to refund any consideration paid by the Lessee prior to such modification, cancellation or abrogation including, but not limited to, bonuses, rentals and royalties.

NOTE: The State of Louisiana does hereby reserve, and this lease shall be subject to, the imprescriptible right of surface use in the nature of a servitude in favor of the Department of Natural Resources, including its Offices and Commissions, for the sole purpose of implementing, constructing, servicing and maintaining approved coastal zone management and/or restoration projects. Utilization of any and all rights derived under this lease by the mineral lessee, its agents, successors or assigns, shall not interfere with nor hinder the reasonable surface use by the Department of Natural Resources, its Offices or Commissions, as herein above reserved.

Applicant: PATRICK L. DONOHUE PETROLEUM PROPERTIES, INC.

Bidder	Cash Payment	Price/Acre	Rental	Oil	Gas	Other

Legend
15020042
Active_Leases



TRACT 44222 - St. Mary Parish, Louisiana

All of the lands now or formerly constituting the beds and bottoms of all water bodies of every nature and description as to which title is vested in the State of Louisiana, together with all islands arising therein and other lands formed by accretion or by reliction, where allowed by law, excepting tax adjudicated lands, and not presently under mineral lease on February 11, 2015, situated in St. Mary Parish, Louisiana, and more particularly described as follows: Beginning at a Point having Coordinates of X = 2,011,683.43 and Y = 340,290.40; Thence 89 degrees 30 minutes 01 seconds East 2,725.37 feet to a point having Coordinates of X = 2,014,408.70 and Y = 340,314.17; Thence North 00 degrees 01 minutes 20 seconds West 400.18 feet to a point having Coordinates of X = 2,014,408.54 and Y = 340,714.35; Thence North 89 degrees 12 minutes 30 seconds East 2,650.32 feet to a point having Coordinates of X = 2,017,058.61 and Y = 340,750.97; Thence South 00 degrees 18 minutes 06 seconds East 8,314.51 feet to a point having Coordinates of X = 2,017,102.40 and Y = 332,436.58; Thence West 5,354.21 feet to a point having Coordinates of X = 2,011,748.19 and Y = 332,436.58; Thence North 00 degrees 28 minutes 21 seconds West 7,854.09 feet to the point of beginning, containing approximately **56 acres**, all as more particularly outlined on a plat on file in the Office of Mineral Resources, Department of Natural Resources. All bearings, distances and coordinates are based on Louisiana Coordinate System of 1927, (North or South Zone), where applicable.

NOTE: The above description of the Tract nominated for the purpose of acquiring a mineral lease or a geophysical agreement has been provided and corrected, where required, exclusively by the nominating party. Any mineral lease or geophysical agreement selected from this Tract and awarded by the Louisiana State Mineral and Energy Board shall be without warranty of any kind, either express, implied or statutory including, but not limited to, title or the implied warranties of merchantability and fitness for a particular purpose.

An error or omission in the nominating party's Tract description may require that a State mineral lease or geophysical agreement be modified, canceled or abrogated due to the existence of conflicting leases, operating agreements, private claims or other future obligations or conditions within the Tract described. In such case, however, the Louisiana State Mineral and Energy Board shall not be obligated to refund any consideration paid by the Lessee prior to such modification, cancellation or abrogation including, but not limited to, bonuses, rentals and royalties.

NOTE: The State of Louisiana does hereby reserve, and this lease shall be subject to, the imprescriptible right of surface use in the nature of a servitude in favor of the Department of Natural Resources, including its Offices and Commissions, for the sole purpose of implementing, constructing, servicing and maintaining approved coastal zone management and/or restoration projects. Utilization of any and all rights derived

under this lease by the mineral lessee, its agents, successors or assigns, shall not interfere with nor hinder the reasonable surface use by the Department of Natural Resources, its Offices or Commissions, as herein above reserved.

Applicant: AUDUBON ENERGY, LLC

Bidder	Cash Payment	Price/Acre	Rental	Oil	Gas	Other



Legend

15020015



BIG WAX BAYOU

T17S - R12E

T16S - R12E

CROSS BAYOU

GREENS BAYOU

T16S - R11E

P.O.B.

T17S - R11E

ST MARY

LAKE SALVE

0 2,000 Feet



TRACT 44223 - Terrebonne Parish, Louisiana

All of the lands now or formerly constituting the beds and bottoms of all water bodies of every nature and description as to which title is vested in the State of Louisiana, together with all islands arising therein and other lands formed by accretion or by reliction, where allowed by law, excepting tax adjudicated lands, and not presently under mineral lease on February 11, 2015, situated in Terrebonne Parish, Louisiana, and more particularly described as follows: Beginning at a point having Coordinates of X = 2,286,925.00 and Y = 219,058.00; thence East 7,429.00 feet to a point having Coordinates of X = 2,294,354.00 and Y = 219,058.00; thence South 11,837.34 feet to a point having Coordinates of X = 2,294,354.00 and Y = 207,220.66; thence West 1,139.42 feet to a point having Coordinates of X = 2,293,214.58 and Y = 207,220.66; thence South 694.79 feet to a point on the boundary of State Lease No. 20893, having Coordinates of X = 2,293,214.58 and Y = 206,525.87; thence along the boundary of said State Lease No. 20893 the following courses and distances: South 79 degrees 11 minutes 50 seconds West 2,590.49 feet to a point having Coordinates of X = 2,290,670.00 and Y = 206,040.34 and South 845.34 feet to a point having Coordinates of X = 2,290,670.00 and Y = 205,195.00; thence West 3,745.00 feet to a point having Coordinates of X = 2,286,925.00 and Y = 205,195.00; thence North 13,863.00 feet to the point of beginning, **LESS AND EXCEPT** any right, title, and interest in lands owned by and not under lease from the State of Louisiana, on behalf of the Terrebonne Parish School Board, situated in Section 16, Township 21 South, Range 20 East, St. Terrebonne Parish, Louisiana, contained within the above described tract containing approximately **2,248.00 acres**, all as more particularly outlined on a plat on file in the Office of Mineral Resources, Department of Natural Resources. All bearings, distances and coordinates are based on Louisiana Coordinate System of 1927, (North or South Zone), where applicable.

NOTE: The above description of the Tract nominated for the purpose of acquiring a mineral lease or a geophysical agreement has been provided and corrected, where required, exclusively by the nominating party. Any mineral lease or geophysical agreement selected from this Tract and awarded by the Louisiana State Mineral and Energy Board shall be without warranty of any kind, either express, implied or statutory including, but not limited to, title or the implied warranties of merchantability and fitness for a particular purpose.

An error or omission in the nominating party's Tract description may require that a State mineral lease or geophysical agreement be modified, canceled or abrogated due to the existence of conflicting leases, operating agreements, private claims or other future obligations or conditions within the Tract described. In such case, however, the Louisiana State Mineral and Energy Board shall not be obligated to refund any consideration paid by the Lessee prior to such modification, cancellation or abrogation including, but not limited to, bonuses, rentals and royalties.

NOTE: The State of Louisiana does hereby reserve, and this lease shall be subject to, the imprescriptible right of surface use in the nature of a servitude in favor of the Department of Natural Resources, including its Offices and Commissions, for the sole purpose of implementing, constructing, servicing and maintaining approved coastal zone management and/or restoration projects. Utilization of any and all rights derived under this lease by the mineral lessee, its agents, successors or assigns, shall not interfere with nor hinder the reasonable surface use by the Department of Natural Resources, its Offices or Commissions, as herein above reserved.

Applicant: THEOPHILUS OIL, GAS & LAND SERVICES, LLC

Bidder	Cash Payment	Price/Acre	Rental	Oil	Gas	Other

Legend

- 15020028
- Active_Leases
- Counties



TRACT 44224 - Lafourche and Terrebonne Parishes, Louisiana

All of the lands now or formerly constituting the beds and bottoms of all water bodies of every nature and description as to which title is vested in the State of Louisiana, together with all islands arising therein and other lands formed by accretion or by reliction, where allowed by law, excepting tax adjudicated lands, and not presently under mineral lease on February 11, 2015, situated in Lafourche and Terrebonne Parishes, Louisiana, and more particularly described as follows: Beginning at a point having Coordinates of X = 2,294,354.00 and Y = 219,058.00; thence East 8,951.48 feet to a point having Coordinates of X = 2,303,305.48 and Y = 219,058.00; thence South 3,428.55 feet to a point on the boundary of State Lease No. 21147, having Coordinates of X = 2,303,305.48 and Y = 215,629.45; thence along the boundary of said State Lease No. 21147 the following courses and distances: South 27 degrees 25 minutes 49 seconds West 1,457.84 feet to a point having Coordinates of X = 2,302,633.90 and Y = 214,335.51 and South 41 degrees 51 minutes 37 seconds East 2,176.30 feet to a point on the boundary of State Lease No. 21225, having Coordinates of X = 2,304,086.18 and Y = 212,714.66; thence along the boundaries of said State Lease No. 21225 the following courses and distances: South 41 degrees 51 minutes 38 seconds East 184.24 feet to a point having Coordinates of X = 2,304,209.13 and Y = 212,577.44 and North 70 degrees 45 minutes 06 seconds East 1,370.55 feet to a point having Coordinates of X = 2,305,503.06 and Y = 213,029.26; thence South 4,069.30 feet to a point having Coordinates of X = 2,305,503.06 and Y = 208,959.96; thence West 1,416.88 feet to a point having Coordinates of X = 2,304,086.18 and Y = 208,959.96; thence South 1,739.30 feet to a point having Coordinates of X = 2,304,086.18 and Y = 207,220.66; thence West 9,732.18 feet to a point having Coordinates of X = 2,294,354.00 and Y = 207,220.66; thence North 11,837.34 feet to the point of beginning, **LESS AND EXCEPT** all that portion of State Lease No. 21146 that lies within the above described tract, being more fully described as follows: Beginning at a point having Coordinates of X = 2,299,308.84 and Y = 211,503.23; thence North 82 degrees 59 minutes 16 seconds East 1,009.26 feet to a point having Coordinates of X = 2,300,310.55 and Y = 211,626.44; thence North 60 degrees 31 minutes 27 seconds East 1,363.57 feet to a point having Coordinates of X = 2,301,497.62 and Y = 212,297.39; thence South 89 degrees 39 minutes 22 seconds East 1,294.74 feet to a point having Coordinates of X = 2,302,792.34 and Y = 212,289.62; thence South 72 degrees 28 minutes 53 seconds East 460.91 feet to a point having Coordinates of X = 2,303,231.87 and Y = 212,150.88; thence South 27 degrees 30 minutes 15 seconds West 1,468.47 feet to a point having Coordinates of X = 2,302,553.71 and Y = 210,848.38; thence South 40 degrees 08 minutes 16 seconds West 2,893.51 feet to a point having Coordinates of X = 2,300,688.48 and Y = 208,636.30; thence North 66 degrees 32 minutes 44 seconds West 2,168.13 feet to a point having Coordinates of X = 2,298,699.49 and Y = 209,499.26; thence North 16 degrees 54 minutes 47 seconds East 2,094.57 feet to the point of beginning, containing approximately **2,091 acres**, all as more particularly outlined on a plat on file in the Office of Mineral Resources, Department of Natural Resources. All bearings, distances and coordinates are based on

Louisiana Coordinate System of 1927, (North or South Zone), where applicable.

NOTE: The above description of the Tract nominated for the purpose of acquiring a mineral lease or a geophysical agreement has been provided and corrected, where required, exclusively by the nominating party. Any mineral lease or geophysical agreement selected from this Tract and awarded by the Louisiana State Mineral and Energy Board shall be without warranty of any kind, either express, implied or statutory including, but not limited to, title or the implied warranties of merchantability and fitness for a particular purpose.

An error or omission in the nominating party's Tract description may require that a State mineral lease or geophysical agreement be modified, canceled or abrogated due to the existence of conflicting leases, operating agreements, private claims or other future obligations or conditions within the Tract described. In such case, however, the Louisiana State Mineral and Energy Board shall not be obligated to refund any consideration paid by the Lessee prior to such modification, cancellation or abrogation including, but not limited to, bonuses, rentals and royalties.

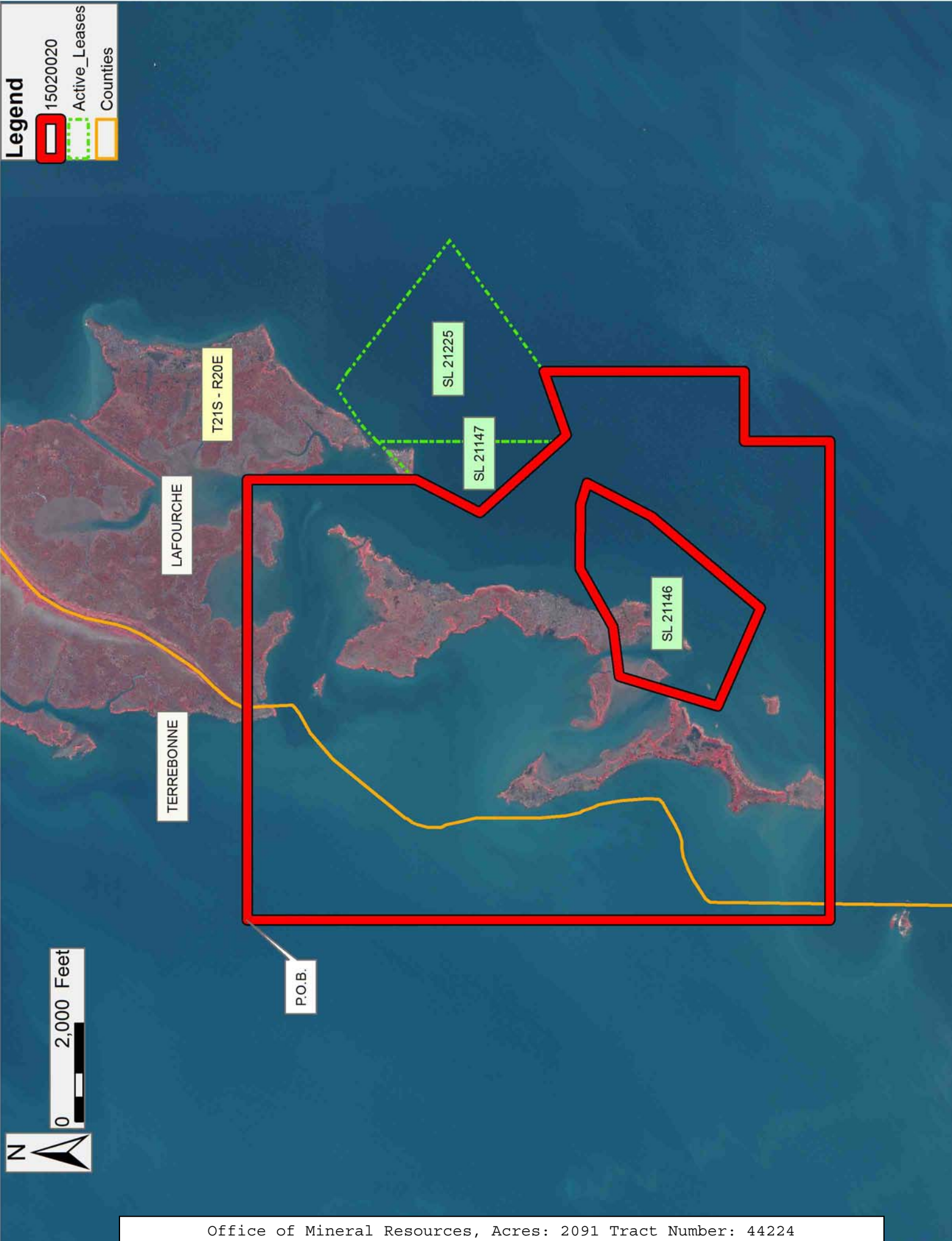
NOTE: The State of Louisiana does hereby reserve, and this lease shall be subject to, the imprescriptible right of surface use in the nature of a servitude in favor of the Department of Natural Resources, including its Offices and Commissions, for the sole purpose of implementing, constructing, servicing and maintaining approved coastal zone management and/or restoration projects. Utilization of any and all rights derived under this lease by the mineral lessee, its agents, successors or assigns, shall not interfere with nor hinder the reasonable surface use by the Department of Natural Resources, its Offices or Commissions, as herein above reserved.

Applicant: THEOPHILUS OIL, GAS & LAND SERVICES, LLC

Bidder	Cash Payment	Price/Acre	Rental	Oil	Gas	Other

Legend

- 15020020
- Active_Leases
- Counties



T21S - R20E

LAFOURCHE

TERREBONNE

SL 21225

SL 21147

SL 21146

P.O.B.

