

TRACT 41845 - Sabine Parish, Louisiana

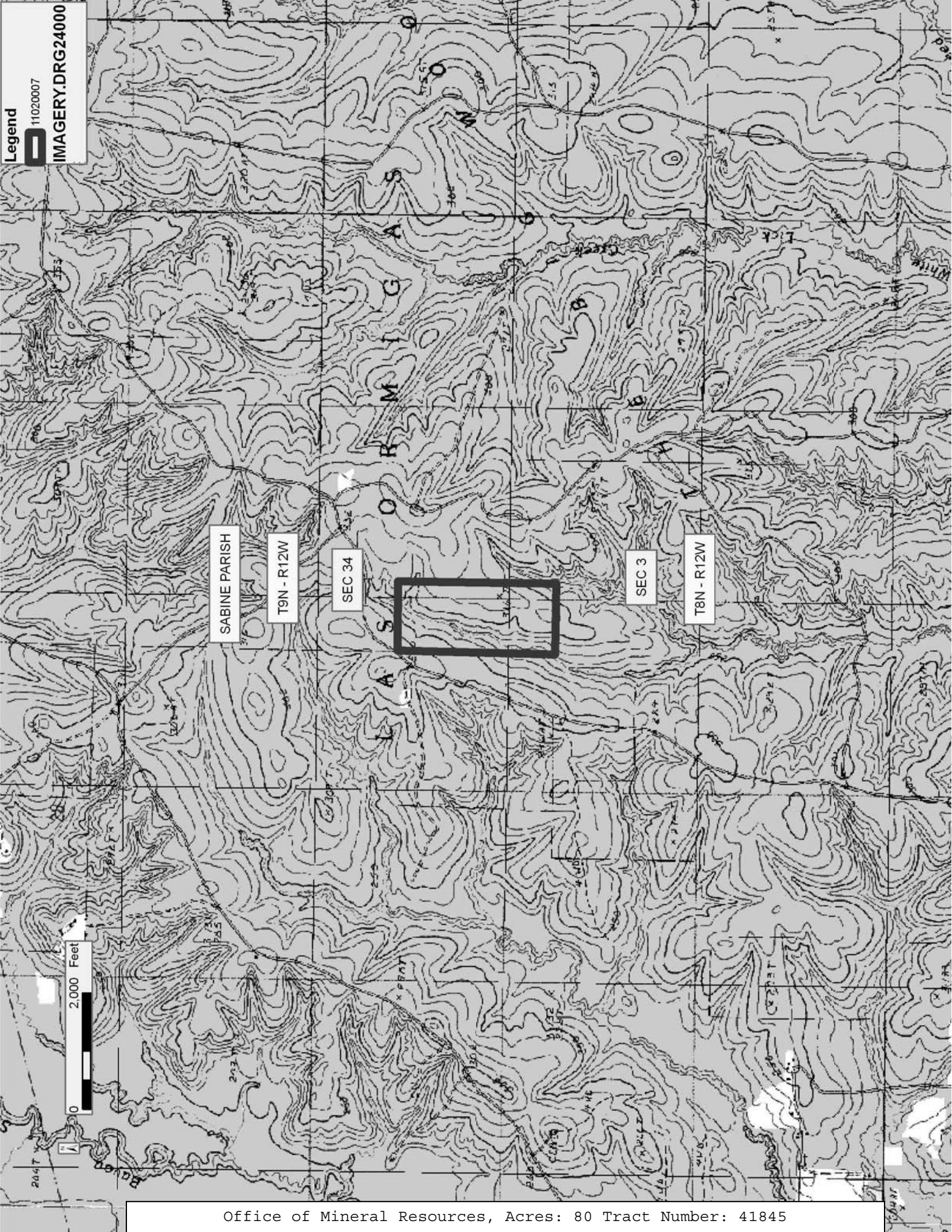
All of the mineral rights only under land adjudicated to and acquired by the State of Louisiana in and through a proper tax sale, and subsequently alienated by the State which retained the mineral rights thereto, and which is not under valid mineral lease from the State of Louisiana on February 9, 2011, situated in Sabine Parish, Louisiana, and being more fully described as follows: The West Half of the Southwest Quarter (West 2 of SW/4) of Section 34, Township 9 North, Range 12 West, Sabine Parish, Louisiana; being the same property adjudicated to the State of Louisiana in the name of J. E. Washburn for nonpayment of 1932 taxes by virtue of the Instrument recorded at COB 68, PAGE 490, Entry No. 64448; and Patented by the State of Louisiana to Zollie A. Hayes, at Patent No. 13052, recorded in COB 90, PAGE 311, records of Sabine Parish, LA; and containing approximately **80.00 acres**, all as more particularly outlined on a plat on file in the Office of Mineral Resources, Department of Natural Resources. All bearings, distances and coordinates are based on Louisiana Coordinate System of 1927, (North or South Zone), where applicable.

NOTE: The above description of the Tract nominated for lease has been provided and corrected, where required, exclusively by the nomination party. Any mineral lease selected from this Tract and awarded by the Louisiana State Mineral and Energy Board shall be without warranty of any kind, either express, implied, or statutory, including, but not limited to, the implied warranties of merchantability and fitness for a particular purpose. Should the mineral lease awarded by the Louisiana State Mineral and Energy Board be subsequently modified, cancelled or abrogated due to the existence of conflicting leases, operating agreements, private claims or other future obligations or conditions which may affect all or any portion of the leased Tract, it shall not relieve the Lessee of the obligation to pay any bonus due thereon to the Louisiana State Mineral and Energy Board, nor shall the Louisiana State Mineral and Energy Board be obligated to refund any consideration paid by the Lessor prior to such modification, cancellation, or abrogation, including, but not limited to, bonuses, rentals and royalties.

NOTE: No surface activity on this tract undertaken in conjunction with any operations under any mineral lease given on this tract will be allowed without prior approval of the surface owner and further, no such right of surface use shall be deemed to have been given as part of any mineral lease by the State of Louisiana on this tract.

Applicant: PARAMOUNT ENERGY, INC.

Bidder	Cash Payment	Price/ Acre	Rental	Oil	Gas	Other



TRACT 41846 - Sabine Parish, Louisiana

All of the mineral rights only under land adjudicated to and acquired by the State of Louisiana in and through a proper tax sale, and subsequently alienated by the State which retained the mineral rights thereto, and which is not under valid mineral lease from the State of Louisiana on February 9, 2011, situated in Sabine Parish, Louisiana, and being more fully described as follows: The Northwest Quarter (N West 1/4) of the Southwest Quarter (S West 1/4) of Section 36, Township 8 North, Range 14 West, being the same land adjudicated to the State of Louisiana for unpaid taxes for the year 1931, in the name of Jacob Ebarb. Subsequently, the State of Louisiana granted Patent No. 14100, dated January 28, 1946 to John J. Ebarb and his heirs, containing approximately **40 acres**, all as more particularly outlined on a plat on file in the Office of Mineral Resources, Department of Natural Resources. All bearings, distances and coordinates are based on Louisiana Coordinate System of 1927, (North or South Zone), where applicable.

NOTE: The above description of the Tract nominated for lease has been provided and corrected, where required, exclusively by the nomination party. Any mineral lease selected from this Tract and awarded by the Louisiana State Mineral and Energy Board shall be without warranty of any kind, either express, implied, or statutory, including, but not limited to, the implied warranties of merchantability and fitness for a particular purpose. Should the mineral lease awarded by the Louisiana State Mineral and Energy Board be subsequently modified, cancelled or abrogated due to the existence of conflicting leases, operating agreements, private claims or other future obligations or conditions which may affect all or any portion of the leased Tract, it shall not relieve the Lessee of the obligation to pay any bonus due thereon to the Louisiana State Mineral and Energy Board, nor shall the Louisiana State Mineral and Energy Board be obligated to refund any consideration paid by the Lessor prior to such modification, cancellation, or abrogation, including, but not limited to, bonuses, rentals and royalties.

NOTE: No surface activity on this tract undertaken in conjunction with any operations under any mineral lease given on this tract will be allowed without prior approval of the surface owner and further, no such right of surface use shall be deemed to have been given as part of any mineral lease by the State of Louisiana on this tract.

Applicant: JCS RESOURCES, L.L.C.

Bidder	Cash Payment	Price/ Acre	Rental	Oil	Gas	Other



TRACT 41847 - Sabine Parish, Louisiana

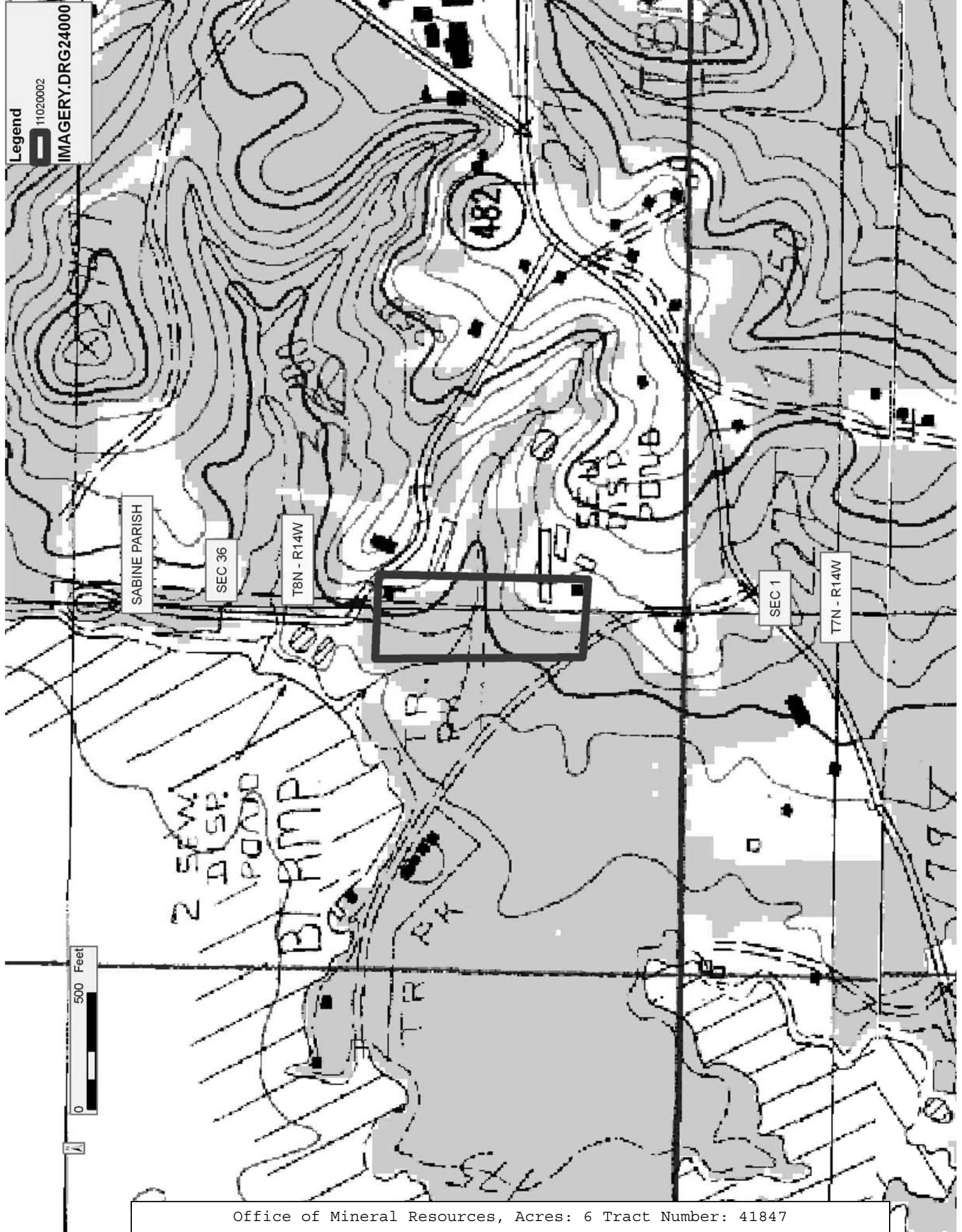
All of the mineral rights only under land adjudicated to and acquired by the State of Louisiana in and through a proper tax sale, and subsequently alienated by the State which retained the mineral rights thereto, and which is not under valid mineral lease from the State of Louisiana on February 9, 2011, situated in Sabine Parish, Louisiana, and being more fully described as follows: 8 acre block of land in South East 1/4 of South West 1/4 Section 36 8 14, beginning at NW Corner of 121 yds., thence north 320 yds., thence 121 yds. to place of beginning, except two acres to Gertrude Laroux, being the same land adjudicated to the State of Louisiana for unpaid taxes for the year 1931, in the name of Jacob Ebarb. Subsequently, the State of Louisiana granted Patent No. 13262, dated September 23, 1942 to John J. Ebarb and his heirs, containing approximately **6 acres**, all as more particularly outlined on a plat on file in the Office of Mineral Resources, Department of Natural Resources. All bearings, distances and coordinates are based on Louisiana Coordinate System of 1927, (North or South Zone), where applicable.

NOTE: The above description of the Tract nominated for lease has been provided and corrected, where required, exclusively by the nomination party. Any mineral lease selected from this Tract and awarded by the Louisiana State Mineral and Energy Board shall be without warranty of any kind, either express, implied, or statutory, including, but not limited to, the implied warranties of merchantability and fitness for a particular purpose. Should the mineral lease awarded by the Louisiana State Mineral and Energy Board be subsequently modified, cancelled or abrogated due to the existence of conflicting leases, operating agreements, private claims or other future obligations or conditions which may affect all or any portion of the leased Tract, it shall not relieve the Lessee of the obligation to pay any bonus due thereon to the Louisiana State Mineral and Energy Board, nor shall the Louisiana State Mineral and Energy Board be obligated to refund any consideration paid by the Lessor prior to such modification, cancellation, or abrogation, including, but not limited to, bonuses, rentals and royalties.

NOTE: No surface activity on this tract undertaken in conjunction with any operations under any mineral lease given on this tract will be allowed without prior approval of the surface owner and further, no such right of surface use shall be deemed to have been given as part of any mineral lease by the State of Louisiana on this tract.

Applicant: JCS RESOURCES, L.L.C.

Bidder	Cash Payment	Price/ Acre	Rental	Oil	Gas	Other



TRACT 41848 - Jefferson Davis Parish, Louisiana

All of the mineral rights only under land adjudicated to and acquired by the State of Louisiana in and through a proper tax sale, and subsequently alienated by the State which retained the mineral rights thereto, and which is not under valid mineral lease from the State of Louisiana on February 9, 2011, situated in Jefferson Davis Parish, Louisiana, and being more fully described as follows: Lot 8, Block 6 of Woods Subdivision, No. 1, Section 21, Township 9 South, Range 5 West formerly Calcasieu Parish, now Jefferson Davis Parish, Louisiana, adjudicated to the State of Louisiana for the nonpayment of taxes for the year 1912 in the name of Central C. O. AND D. Company and sold to R. L. Coleman, October 20, 1923, containing approximately **1 acre**, all as more particularly outlined on a plat on file in the Office of Mineral Resources, Department of Natural Resources. All bearings, distances and coordinates are based on Louisiana Coordinate System of 1927, (North or South Zone), where applicable.

NOTE: The above description of the Tract nominated for lease has been provided and corrected, where required, exclusively by the nomination party. Any mineral lease selected from this Tract and awarded by the Louisiana State Mineral and Energy Board shall be without warranty of any kind, either express, implied, or statutory, including, but not limited to, the implied warranties of merchantability and fitness for a particular purpose. Should the mineral lease awarded by the Louisiana State Mineral and Energy Board be subsequently modified, cancelled or abrogated due to the existence of conflicting leases, operating agreements, private claims or other future obligations or conditions which may affect all or any portion of the leased Tract, it shall not relieve the Lessee of the obligation to pay any bonus due thereon to the Louisiana State Mineral and Energy Board, nor shall the Louisiana State Mineral and Energy Board be obligated to refund any consideration paid by the Lessor prior to such modification, cancellation, or abrogation, including, but not limited to, bonuses, rentals and royalties.

NOTE: No surface activity on this tract undertaken in conjunction with any operations under any mineral lease given on this tract will be allowed without prior approval of the surface owner and further, no such right of surface use shall be deemed to have been given as part of any mineral lease by the State of Louisiana on this tract.

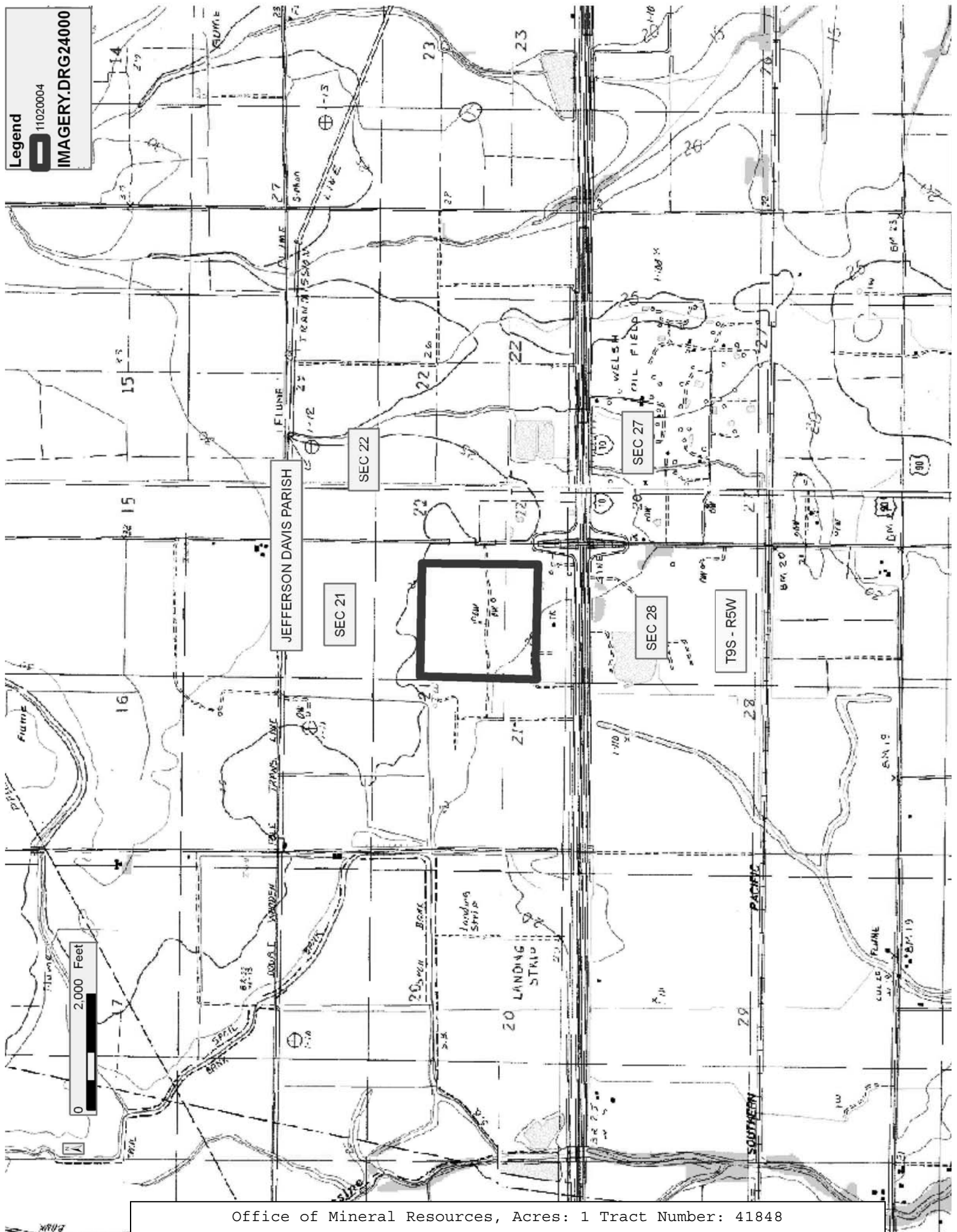
Applicant: THOMAS M. KILGORE, JR.

Bidder	Cash Payment	Price/ Acre	Rental	Oil	Gas	Other

Legend

11020004

IMAGERY.DRG24000



TRACT 41849 - Acadia and Lafayette Parishes, Louisiana

All of the mineral rights only under land adjudicated to and acquired by the State of Louisiana in and through a proper tax sale, and subsequently alienated by the State which retained the mineral rights thereto, and which is not under valid mineral lease from the State of Louisiana on February 9, 2011, situated in Acadia and Lafayette Parishes, Louisiana, and being more fully described as follows: A certain tract of land situated in the South Half of Section 21, Township 10 South, Range 2 East, Acadia and/or Lafayette Parishes, Louisiana, and bounded, now or formerly, as follows: On the North by lands of Deus Monceaux; on the East and South by State Lease No. 5653; and on the West by lands of Plattsmier Hulin, Inc. and by lands of Horace J. Foreman, et al. Said tract was adjudicated to the State of Louisiana from Orville Trahan for nonpayment of taxes for the year 1925. Said tract is further identified as being tract 36 of the MT RC SUA Plattsmier-Hulin No. 1, Conservation Order No. 448-K-4, dated June 20, 2007, containing approximately **3.86 acres**, all as more particularly outlined on a plat on file in the Office of Mineral Resources, Department of Natural Resources. All bearings, distances and coordinates are based on Louisiana Coordinate System of 1927, (North or South Zone), where applicable.

NOTE: The above description of the Tract nominated for lease has been provided and corrected, where required, exclusively by the nomination party. Any mineral lease selected from this Tract and awarded by the Louisiana State Mineral and Energy Board shall be without warranty of any kind, either express, implied, or statutory, including, but not limited to, the implied warranties of merchantability and fitness for a particular purpose. Should the mineral lease awarded by the Louisiana State Mineral and Energy Board be subsequently modified, cancelled or abrogated due to the existence of conflicting leases, operating agreements, private claims or other future obligations or conditions which may affect all or any portion of the leased Tract, it shall not relieve the Lessee of the obligation to pay any bonus due thereon to the Louisiana State Mineral and Energy Board, nor shall the Louisiana State Mineral and Energy Board be obligated to refund any consideration paid by the Lessor prior to such modification, cancellation, or abrogation, including, but not limited to, bonuses, rentals and royalties.

NOTE: No surface activity on this tract undertaken in conjunction with any operations under any mineral lease given on this tract will be allowed without prior approval of the surface owner and further, no such right of surface use shall be deemed to have been given as part of any mineral lease by the State of Louisiana on this tract.

Applicant: PATRICK L. DONOHUE PETROLEUM PROPERTIES, INC.

Bidder	Cash Payment	Price/ Acre	Rental	Oil	Gas	Other

