

TRACT 40829 - Lafourche Parish, Louisiana

A certain Tract of land, excluding the beds and bottoms of all navigable waters, belonging to and not presently under mineral lease from Town Of Golden Meadow on February 11, 2009, being more fully described as follows: All of the dedicated roads, streets, alleys, and other lands situated in Sections 26, 27 and 67, Township 19 South, Range 21 East, and Section 2, Township 19 South Range 22 East, Lafourche Parish, Louisiana, being located within the following described boundaries: Beginning at a point having Coordinates of X = 2,337,842.90 and Y = 267,700.25; thence South 89 degrees 44 minutes 08 seconds West 1,786.92 feet to a point having Coordinates of X = 2,336,056.00 and Y = 267,692.00; thence South 11 degrees 41 minutes 56 seconds East 373.22 feet to a point having Coordinates of X = 2,336,131.68 and Y = 267,326.54; thence South 71 degrees 21 minutes 46 seconds West 471.39 feet to a point having Coordinates of X = 2,335,685.00 and Y = 267,175.89; thence North 07 degrees 06 minutes 51 seconds West 885.52 feet to a point having Coordinates of X = 2,335,575.33 and Y = 268,054.60; thence North 31 degrees 18 minutes 13 seconds West 232.18 feet to a point having Coordinates of X = 2,335,454.70 and Y = 268,252.98; thence North 31 degrees 18 minutes 13 seconds West 31.78 feet to a point having Coordinates of X = 2,335,438.18 and Y = 268,280.13; thence South 88 degrees 41 minutes 56 seconds West 1,020.76 feet to a point having Coordinates of X = 2,334,417.69 and Y = 268,256.95; thence North 1,583.82 feet to a point having Coordinates of X = 2,334,417.69 and Y = 269,840.77; thence East 3,169.80 feet to a point having Coordinates of X = 2,337,587.50 and Y = 269,840.77; thence South 03 degrees 37 minutes 30 seconds East 894.08 feet to a point having Coordinates of X = 2,337,644.03 and Y = 268,948.48; thence South 05 degrees 56 minutes 13 seconds East 848.88 feet to a point having Coordinates of X = 2,337,731.83 and Y = 268,104.15; thence South 15 degrees 22 minutes 32 seconds East 418.90 feet to the point of beginning, containing approximately **11 acres**, all as more particularly outlined on a plat on file in the Office of Mineral Resources, Department of Natural Resources. The description is based on information provided by the State Agency regarding location and ownership of surface and mineral rights. All bearings, distances and coordinates, if applicable, are based on Louisiana Coordinate System of 1927, (North or South Zone).

NOTE: The above description of the Tract nominated for lease has been provided and corrected, where required, exclusively by the nomination party. Any mineral lease selected from this Tract and awarded by the Louisiana State Mineral Board shall be without warranty of any kind, either express, implied, or statutory, including, but not limited to, the implied warranties of merchantability and fitness for a particular purpose. Should the mineral lease awarded by the Louisiana State Mineral Board be subsequently modified, cancelled or abrogated due to the existence of conflicting leases, operating agreements, private claims or other future obligations or conditions which may affect all or any portion of the leased Tract, it shall not relieve the Lessee of the obligation to

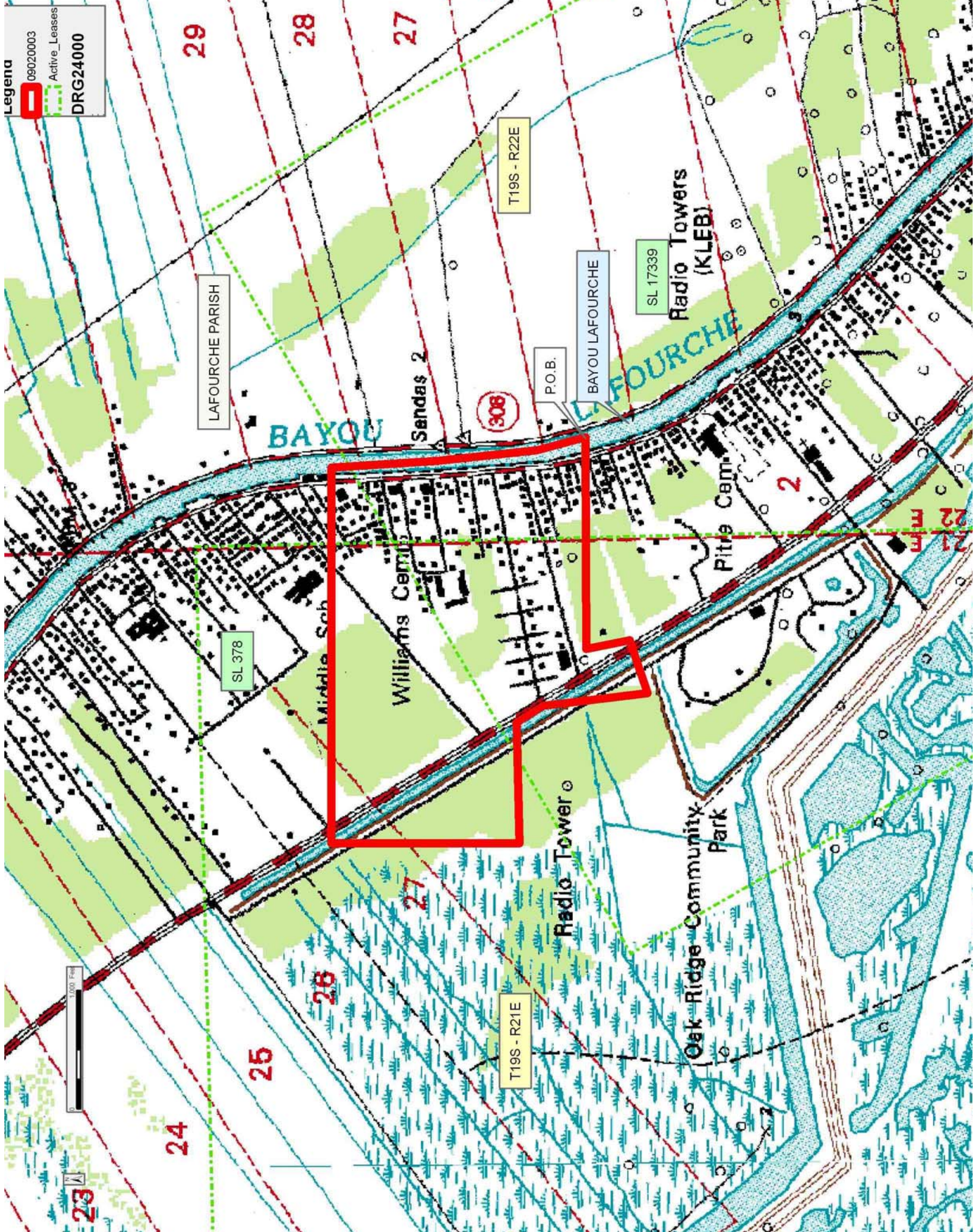
pay any bonus due thereon to the Louisiana State Mineral Board, nor shall the Louisiana State Mineral Board be obligated to refund any consideration paid by the Lessor prior to such modification, cancellation, or abrogation, including, but not limited to, bonuses, rentals and royalties.

Applicant: LARRY S. MINTER, INC. to Agency and by Resolution from the Town Of Golden Meadow authorizing the Mineral Board to act in its behalf

Bidder	Cash Payment	Price/Acre	Rental	Oil	Gas	Other

Legenda

- 09020003 Active_Leases
- DRG24000



TRACT 40830 - Lafourche Parish, Louisiana

A certain Tract of land, excluding the beds and bottoms of all navigable waters, belonging to and not presently under mineral lease from Louisiana Department Of Transportation And Development on February 11, 2009, being more fully described as follows: All of the rights, title, and, interest in any highways, right-of-ways, roads, or other lands owned by and not presently under mineral lease from the Louisiana Department of Transportation and Development, being situated in Sections 27 and 67, Township 19 South, Range 21 East, and Section 2, Township 19 South Range 22 East, Lafourche Parish, Louisiana, being located within the following described boundaries: Beginning at a point having Coordinates of X = 2,337,842.90 and Y = 267,700.25; thence South 89 degrees 44 minutes 08 seconds West 1,786.92 feet to a point having Coordinates of X = 2,336,056.00 and Y = 267,692.00; thence South 11 degrees 41 minutes 56 seconds East 373.22 feet to a point having Coordinates of X = 2,336,131.68 and Y = 267,326.54; thence South 71 degrees 21 minutes 46 seconds West 471.39 feet to a point having Coordinates of X = 2,335,685.00 and Y = 267,175.89; thence North 07 degrees 06 minutes 51 seconds West 885.52 feet to a point having Coordinates of X = 2,335,575.33 and Y = 268,054.60; thence North 31 degrees 18 minutes 13 seconds West 232.18 feet to a point having Coordinates of X = 2,335,454.70 and Y = 268,252.98; thence North 31 degrees 18 minutes 13 seconds West 31.78 feet to a point having Coordinates of X = 2,335,438.18 and Y = 268,280.13; thence South 88 degrees 41 minutes 56 seconds West 1,020.76 feet to a point having Coordinates of X = 2,334,417.69 and Y = 268,256.95; thence North 1,583.82 feet to a point having Coordinates of X = 2,334,417.69 and Y = 269,840.77; thence East 3,169.80 feet to a point having Coordinates of X = 2,337,587.50 and Y = 269,840.77; thence South 03 degrees 37 minutes 30 seconds East 894.08 feet to a point having Coordinates of X = 2,337,644.03 and Y = 268,948.48; thence South 05 degrees 56 minutes 13 seconds East 848.88 feet to a point having Coordinates of X = 2,337,731.83 and Y = 268,104.15; thence South 15 degrees 22 minutes 32 seconds East 418.90 feet to the point of beginning, containing approximately **8 acres**, all as more particularly outlined on a plat on file in the Office of Mineral Resources, Department of Natural Resources. The description is based on information provided by the State Agency regarding location and ownership of surface and mineral rights. All bearings, distances and coordinates, if applicable, are based on Louisiana Coordinate System of 1927, (North or South Zone).

NOTE: The above description of the Tract nominated for lease has been provided and corrected, where required, exclusively by the nomination party. Any mineral lease selected from this Tract and awarded by the Louisiana State Mineral Board shall be without warranty of any kind, either express, implied, or statutory, including, but not limited to, the implied warranties of merchantability and fitness for a particular purpose. Should the mineral lease awarded by the Louisiana State Mineral Board be subsequently modified, cancelled or abrogated due to the existence of conflicting leases, operating agreements, private claims or

other future obligations or conditions which may affect all or any portion of the leased Tract, it shall not relieve the Lessee of the obligation to pay any bonus due thereon to the Louisiana State Mineral Board, nor shall the Louisiana State Mineral Board be obligated to refund any consideration paid by the Lessor prior to such modification, cancellation, or abrogation, including, but not limited to, bonuses, rentals and royalties.

Applicant: LARRY S. MINTER, INC. to Agency and by Resolution from the Louisiana Department Of Transportation And Development authorizing the Mineral Board to act in its behalf

Bidder	Cash Payment	Price/Acre	Rental	Oil	Gas	Other

Legend

- 09020005
- Active_Leases
- DRG24000

