

**TRACT 40819 - Portion of Block 51, Main Pass Area, Revised, Plaquemines Parish, Louisiana**

All of the lands now or formerly constituting the beds and bottoms of all water bodies of every nature and description as to which title is vested in the State of Louisiana, together with all islands arising therein and other lands formed by accretion or by reliction, where allowed by law, excepting tax adjudicated lands, and not presently under mineral lease on February 11, 2009, situated in Plaquemines Parish, Louisiana, and more particularly described as follows: Beginning at a point on the Southern boundary of State Lease No. 6420, as amended, having Coordinates of X = 2,598,548.37 and Y = 275,830.00; thence along the boundary of said State Lease No. 6420 the following courses: thence East 1,671.62 feet to a point having Coordinates of X = 2,600,219.99 and Y = 275,830.00; North 85 degrees 41 minutes 44 seconds East 932.63 feet to a point having Coordinates X = 2,601,149.99 and Y = 275,900.00; North 74 degrees 52 minutes 34 seconds East 383.28 feet to a point having Coordinates X = 2,601,519.99 and Y = 276,000.00; North 57 degrees 59 minutes 41 seconds East 188.68 feet to a point having Coordinates X = 2,601,679.99 and Y = 276,100.00; North 46 degrees 23 minutes 50 seconds East 290.00 feet to a point having Coordinates X = 2,601,890.00 and Y = 276,300.00; North 26 degrees 06 minutes 50 seconds East 567.98 feet to a point having Coordinates X = 2,602,140.00 and Y = 276,810.00; North 17 degrees 48 minutes 07 seconds East 1,144.81 feet to a point having Coordinates X = 2,602,490.00 and Y = 277,900.00; and North 29 degrees 35 minutes 32 seconds East 207.01 feet to a point having Coordinates X = 2,602,592.22 and Y = 278,080.00; thence East 3,257.78 feet to a point having Coordinates X = 2,605,850.00 and Y = 278,080.00; thence South 14,748.84 feet to a point having Coordinates of X = 2,605,849.98 and Y = 263,331.16; thence North 52 degrees 03 minutes 29 seconds West approximately 14,467 feet to a point on the Eastern boundary of State Lease No. 195, as amended; thence Northerly approximately 785 feet along the Eastern boundary of said State Lease No. 195 to a point of intersection with the Southern boundary of State Lease No. 1350, as amended, having a Coordinate of Y = 272,999.40; thence along the boundary of said State Lease No. 1350 the following courses: East approximately 1,797 feet to a point having Coordinates of X = 2,596,237.15 and Y = 272,999.40, and North 18 degrees 22 minutes 03 seconds East 1,171.70 feet to a point having Coordinates of X = 2,596,606.36 and Y = 274,111.41; thence North 50 degrees 16 minutes 31 seconds East 1,439.90 feet to a point having Coordinates of X = 2,597,713.82 and Y = 275,031.64; thence North 46 degrees 16 minutes 11 seconds East 1,154.92 feet to the point of beginning containing approximately **1,919 acres**, all as more particularly outlined on a plat on file in the Office of Mineral Resources, Department of Natural Resources. All bearings, distances and coordinates are based on Louisiana Coordinate System of 1927, (North or South Zone), where applicable.

NOTE: The above description of the Tract nominated for lease has been provided and corrected, where required, exclusively by the nomination party. Any mineral lease selected from this Tract and awarded by the Louisiana State Mineral Board shall be without warranty of any kind,

either express, implied, or statutory, including, but not limited to, the implied warranties of merchantability and fitness for a particular purpose. Should the mineral lease awarded by the Louisiana State Mineral Board be subsequently modified, cancelled or abrogated due to the existence of conflicting leases, operating agreements, private claims or other future obligations or conditions which may affect all or any portion of the leased Tract, it shall not relieve the Lessee of the obligation to pay any bonus due thereon to the Louisiana State Mineral Board, nor shall the Louisiana State Mineral Board be obligated to refund any consideration paid by the Lessor prior to such modification, cancellation, or abrogation, including, but not limited to, bonuses, rentals and royalties.

NOTE: The State of Louisiana does hereby reserve, and this lease shall be subject to, the imprescriptible right of surface use in the nature of a servitude in favor of the Department of Natural Resources, including its Offices and Commissions, for the sole purpose of implementing, constructing, servicing and maintaining approved coastal zone management and/or restoration projects. Utilization of any and all rights derived under this lease by the mineral lessee, its agents, successors or assigns, shall not interfere with nor hinder the reasonable surface use by the Department of Natural Resources, its Offices or Commissions, as herein above reserved.

NOTE: The Department of Wildlife and Fisheries has designated certain areas in the coastal waters of the State of Louisiana as Oyster Seed Bed Areas. The exact location of those Seed Bed Areas must be obtained from the Department of Wildlife and Fisheries and any work done under a mineral lease from the State of Louisiana may necessarily be conducted in conformity with the rules and regulations promulgated by the said Department of Wildlife and Fisheries for Oyster Seed Bed Areas.

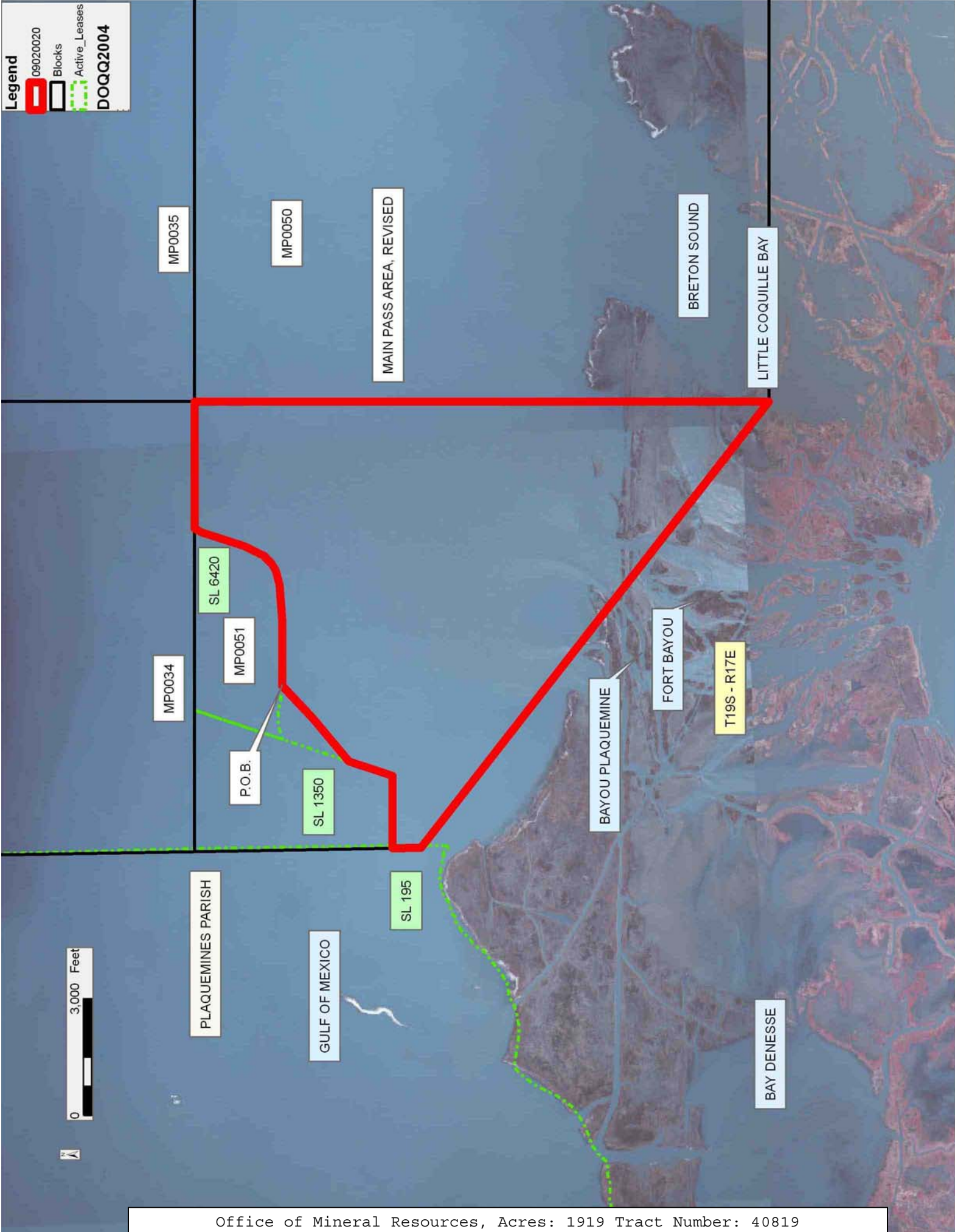
Applicant: CYPRESS ENERGY CORPORATION

Bidder	Cash Payment	Price/Acre	Rental	Oil	Gas	Other

**Legend**

- 09020020
- Blocks
- Active\_Leases

**DOQQ2004**



**TRACT 40820 - Terrebonne Parish, Louisiana**

All of the lands now or formerly constituting the beds and bottoms of all water bodies of every nature and description as to which title is vested in the State of Louisiana, together with all islands arising therein and other lands formed by accretion or by reliction, where allowed by law, excepting tax adjudicated lands, and not presently under mineral lease on February 11, 2009, situated in Terrebonne Parish, Louisiana, and more particularly described as follows: Beginning at a point having Coordinates of X = 2,120,162.84 and Y = 270,620.00; thence East 18,000.00 feet to a point having Coordinates of X = 2,138,162.84 and Y = 270,620.00; thence South 5,978.48 feet to a point having Coordinates of X = 2,138,162.84 and Y = 264,641.52; thence West 2,710.05 feet to a point on the Eastern boundary of State Lease No. 19975 having Coordinates of X = 2,135,452.79 and Y = 264,641.52; thence along the boundary of said State Lease No. 19975 the following courses: North 4,985.04 feet to its Northeast corner having Coordinates of X = 2,135,452.79 and Y = 269,626.56, West 10,532.71 feet to its Northwest corner having Coordinates of X = 2,124,920.08 and Y = 269,626.56, and South 4,985.04 feet to its Southwest corner having Coordinates of X = 2,124,920.08 and Y = 264,641.52; thence South 274.36 feet to a point having Coordinates of X = 2,124,920.08 and Y = 264,367.16; thence West 4,757.24 feet to a point having Coordinates of X = 2,120,162.84 and Y = 264,367.16; thence North 6,252.84 feet to the point of beginning, containing approximately **22 acres**, all as more particularly outlined on a plat on file in the Office of Mineral Resources, Department of Natural Resources. All bearings, distances and coordinates are based on Louisiana Coordinate System of 1927, (North or South Zone), where applicable.

NOTE: The above description of the Tract nominated for lease has been provided and corrected, where required, exclusively by the nomination party. Any mineral lease selected from this Tract and awarded by the Louisiana State Mineral Board shall be without warranty of any kind, either express, implied, or statutory, including, but not limited to, the implied warranties of merchantability and fitness for a particular purpose. Should the mineral lease awarded by the Louisiana State Mineral Board be subsequently modified, cancelled or abrogated due to the existence of conflicting leases, operating agreements, private claims or other future obligations or conditions which may affect all or any portion of the leased Tract, it shall not relieve the Lessee of the obligation to pay any bonus due thereon to the Louisiana State Mineral Board, nor shall the Louisiana State Mineral Board be obligated to refund any consideration paid by the Lessor prior to such modification, cancellation, or abrogation, including, but not limited to, bonuses, rentals and royalties.

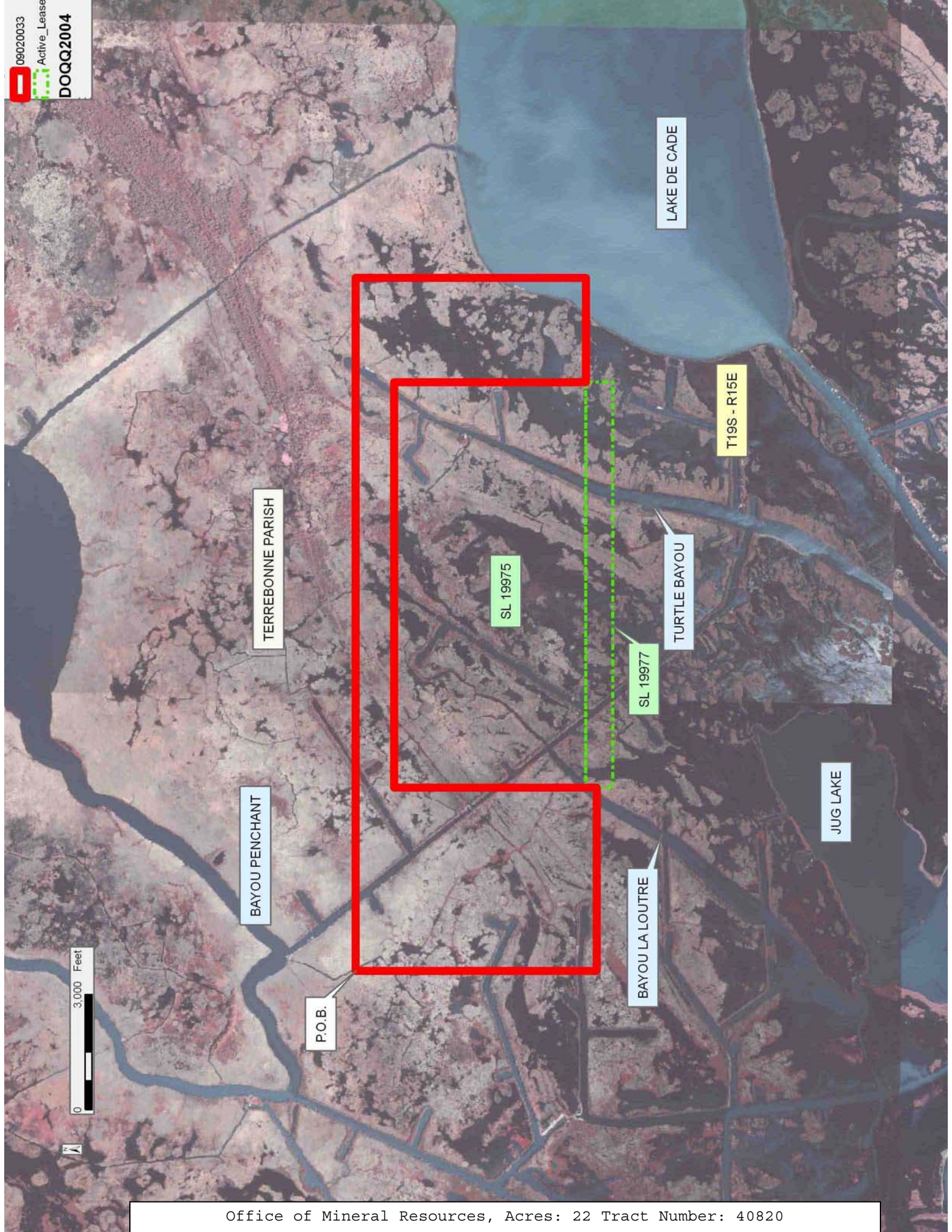
NOTE: The Office of Mineral Resources will require a minimum bonus of \$225 per acre and a minimum royalty of 23%.

NOTE: The State of Louisiana does hereby reserve, and this lease shall be subject to, the imprescriptible right of surface use in the nature of a

servitude in favor of the Department of Natural Resources, including its Offices and Commissions, for the sole purpose of implementing, constructing, servicing and maintaining approved coastal zone management and/or restoration projects. Utilization of any and all rights derived under this lease by the mineral lessee, its agents, successors or assigns, shall not interfere with nor hinder the reasonable surface use by the Department of Natural Resources, its Offices or Commissions, as herein above reserved.

Applicant: STAFF OFFICE OF MINERAL RESOURCES

Bidder	Cash Payment	Price/Acre	Rental	Oil	Gas	Other



**TRACT 40821 - Terrebonne Parish, Louisiana**

All of the lands now or formerly constituting the beds and bottoms of all water bodies of every nature and description as to which title is vested in the State of Louisiana, together with all islands arising therein and other lands formed by accretion or by reliction, where allowed by law, excepting tax adjudicated lands, and not presently under mineral lease on February 11, 2009, situated in Terrebonne Parish, Louisiana, and more particularly described as follows: Beginning at a point having Coordinates of X = 2,138,162.84 and Y = 270,620.00; thence East 10,287.16 feet to a point having Coordinates of X = 2,148,450.00 and Y = 270,620.00; thence South 12,000.00 feet to a point having Coordinates of X = 2,148,450.00 and Y = 258,620.00; thence West 10,287.16 feet to a point having Coordinates of X = 2,138,162.84 and Y = 258,620.00; thence North 809.40 feet to point on the Southern boundary of State Lease No. 12683, as amended, having Coordinates of X = 2,138,162.84 and Y = 259,429.40; thence along the boundary of said State Lease No. 12683 the following courses: North 77 degrees 15 minutes 52 seconds East 3.91 feet to a point having Coordinates of X = 2,138,166.66 and Y = 259,430.27; North 86 degrees 41 minutes 03 seconds East 241.00 feet to a point having Coordinates of X = 2,138,407.25 and Y = 259,444.20; North 75 degrees 10 minutes 00 seconds East 201.21 feet to a point having Coordinates of X = 2,138,601.76 and Y = 259,495.72; North 81 degrees 21 minutes 17 seconds East 104.45 feet to a point having Coordinates of X = 2,138,705.02 and Y = 259,511.42; North 85 degrees 00 minutes 36 seconds East 344.78 feet to a point having Coordinates of X = 2,139,048.49 and Y = 259,541.41; North 59 degrees 53 minutes 32 seconds East 105.96 feet to a point having Coordinates of X = 2,139,140.16 and Y = 259,594.56; South 89 degrees 46 minutes 50 seconds East 203.76 feet to a point having Coordinates of X = 2,139,343.92 and Y = 259,593.78; North 78 degrees 25 minutes 09 seconds East 300.03 feet to a point having Coordinates of X = 2,139,637.84 and Y = 259,654.01; North 75 degrees 45 minutes 19 seconds East 5.51 feet to a point having Coordinates of X = 2,139,643.18 and Y = 259,655.37; North 27 degrees 26 minutes 11 seconds East 1,588.28 feet to a point having Coordinates of X = 2,140,375.00 and Y = 261,065.00; Northwesterly along an arc to the left having a radius of 2,865.00 feet to a point having Coordinates of X = 2,139,215.05 and Y = 261,425.17; Southwesterly along an arc to the left having a radius 740.00 feet to a point having Coordinates of X = 2,138,904.24 and Y = 261,388.44; Southwesterly along an arc to the left having a radius of 320.00 feet to a point having Coordinates of X = 2,138,712.53 and Y = 261,158.73; South 07 degrees 11 minutes 58 seconds West 131.96 feet to a point having Coordinates of X = 2,138,696.00 and Y = 261,027.81 and Southwesterly along an arc to the right having a radius of 880.00 feet to a point having Coordinates of X = 2,138,162.84 and Y = 260,168.79; thence North 10,451.21 feet to the point of beginning, containing approximately **1,846 acres**, all as more particularly outlined on a plat on file in the Office of Mineral Resources, Department of Natural Resources. All bearings, distances and coordinates are based on Louisiana Coordinate System of 1927, (North or South Zone), where applicable.

NOTE: The above description of the Tract nominated for lease has been provided and corrected, where required, exclusively by the nomination party. Any mineral lease selected from this Tract and awarded by the Louisiana State Mineral Board shall be without warranty of any kind, either express, implied, or statutory, including, but not limited to, the implied warranties of merchantability and fitness for a particular purpose. Should the mineral lease awarded by the Louisiana State Mineral Board be subsequently modified, cancelled or abrogated due to the existence of conflicting leases, operating agreements, private claims or other future obligations or conditions which may affect all or any portion of the leased Tract, it shall not relieve the Lessee of the obligation to pay any bonus due thereon to the Louisiana State Mineral Board, nor shall the Louisiana State Mineral Board be obligated to refund any consideration paid by the Lessor prior to such modification, cancellation, or abrogation, including, but not limited to, bonuses, rentals and royalties.

NOTE: The Office of Mineral Resources will require a minimum bonus of \$225 per acre and a minimum royalty of 23%.

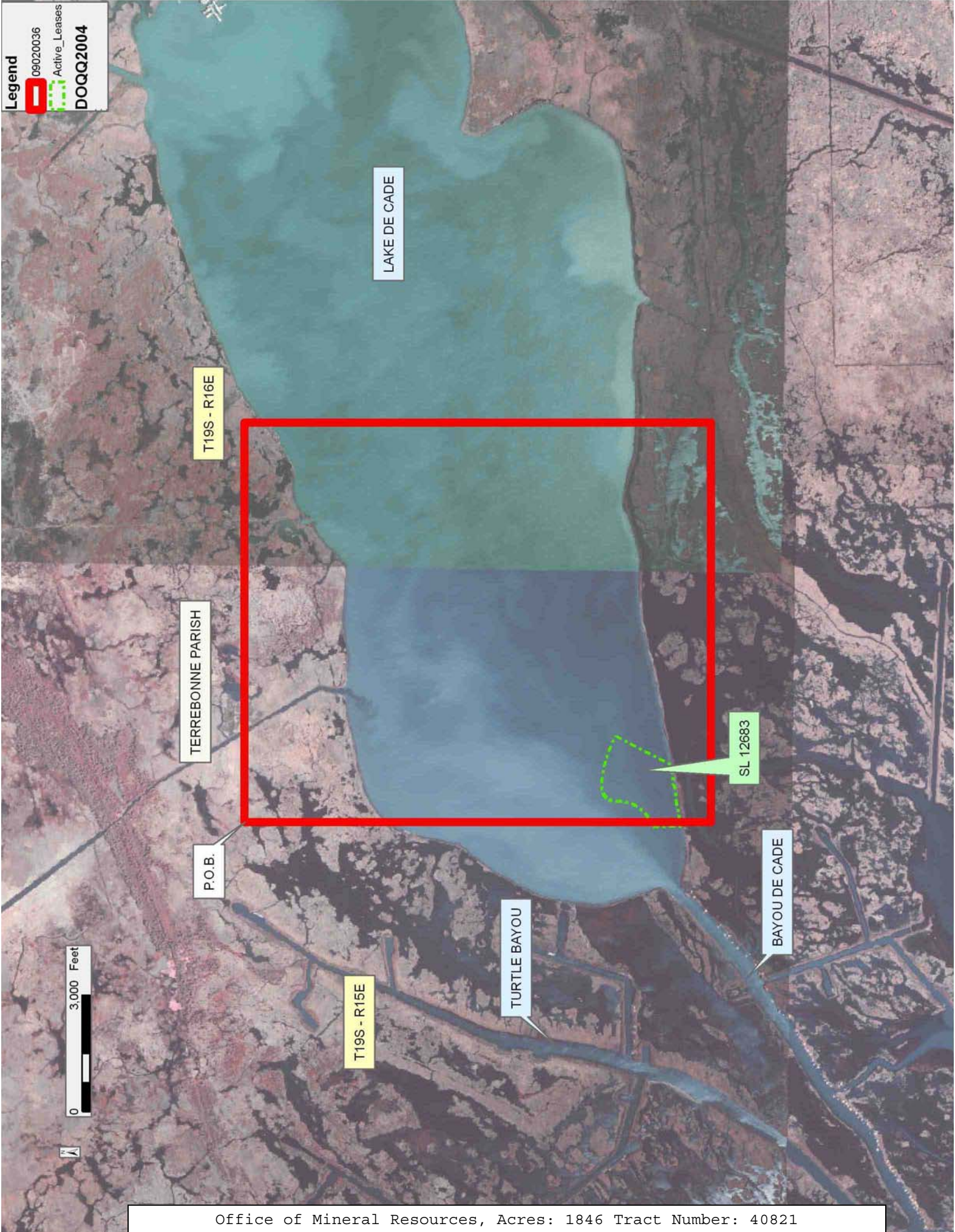
NOTE: The State of Louisiana does hereby reserve, and this lease shall be subject to, the imprescriptible right of surface use in the nature of a servitude in favor of the Department of Natural Resources, including its Offices and Commissions, for the sole purpose of implementing, constructing, servicing and maintaining approved coastal zone management and/or restoration projects. Utilization of any and all rights derived under this lease by the mineral lessee, its agents, successors or assigns, shall not interfere with nor hinder the reasonable surface use by the Department of Natural Resources, its Offices or Commissions, as herein above reserved.

Applicant: STAFF OFFICE OF MINERAL RESOURCES

Bidder	Cash Payment	Price/Acre	Rental	Oil	Gas	Other



**Legend**  
09020036  
Active\_Leases  
DOQQ2004



**TRACT 40822 - Terrebonne Parish, Louisiana**

All of the lands now or formerly constituting the beds and bottoms of all water bodies of every nature and description as to which title is vested in the State of Louisiana, together with all islands arising therein and other lands formed by accretion or by reliction, where allowed by law, excepting tax adjudicated lands, and not presently under mineral lease on February 11, 2009, situated in Terrebonne Parish, Louisiana, and more particularly described as follows: Beginning at a point being the Southwest corner of State Lease No. 19977 having Coordinates of X = 2,124,920.08 and Y = 263,941.52; thence East 10,532.71 feet along the Southern boundary of said State Lease No. 19977 to a point being its Southeast corner having Coordinates of X = 2,135,452.79 and Y = 263,941.52; thence North 700.00 feet along the Eastern boundary of said State Lease No. 19977 to its Northeast corner having Coordinates of X = 2,135,452.79 and Y = 264,641.52; thence East 2,710.05 feet to a point having Coordinates of X = 2,138,162.84 and Y = 264,641.52; thence South 4,472.73 feet to a point of intersection with the boundary of State Lease No. 12683, as amended, having Coordinates of X = 2,138,162.84 and Y = 260,168.79; thence along the boundary of said State Lease No. 12683 the following courses: Southwesterly along an arc to the right having a radius of 880.00 feet to a point having Coordinates of X = 2,138,114.99 and Y = 260,150.00; South 63 degrees 53 minutes 11 seconds West 77.47 feet to a point having Coordinates of X = 2,138,045.42 and Y = 260,115.90; South 00 degrees 51 minutes 37 seconds East 710.70 feet to a point having Coordinates of X = 2,138,056.09 and Y = 259,405.28 and North 77 degrees 15 minutes 52 seconds East 109.44 feet to a point having Coordinates of X = 2,138,162.84 and Y = 259,429.40; thence South 7,087.89 feet to a point having Coordinates of X = 2,138,162.84 and Y = 252,341.52; thence West 13,242.76 feet to a point having Coordinates of X = 2,124,920.08 and Y = 252,341.52; thence North 964.79 feet to a point on the South boundary of State Lease No. 3475, as amended, having Coordinates of X = 2,124,920.08 and Y = 253,306.30; thence along the boundary of said State Lease No. 3475 the following courses: North 89 degrees 08 minutes 28 seconds East 2,992.49 feet to its Southeast corner having Coordinates of X = 2,127,912.24 and Y = 253,351.16 and North 01 degrees 00 minutes 41 seconds West approximately 4,456 feet to a point of intersection with the boundary of State Lease No. 12105, as amended; thence Northerly and Westerly along the meanders of the boundary of said State Lease No. 12105 to the Southeast corner of Operating Agreement AO 0136; thence Northeasterly and Northwesterly along the boundary of said Operating Agreement AO 0136 to a point of intersection with the boundary of said State Lease No. 12105; thence Southwesterly along the meanders of the boundary of said State Lease No. 12105 to a point of intersection with the North boundary of said State Lease No. 3475; thence Westerly approximately 25 feet along the boundary of said State Lease No. 3475 to a point having Coordinates of X = 2,124,920.08 and Y = 258,586.88; thence North 6,054.64 feet to the point of beginning, LESS AND EXPECT that portion, if any, of Operating Agreement AO 0136 and State Lease No. 12105, as amended, that may lie within the above described tract, containing approximately **402 acres**, all as more

particularly outlined on a plat on file in the Office of Mineral Resources, Department of Natural Resources. All bearings, distances and coordinates are based on Louisiana Coordinate System of 1927, (North or South Zone), where applicable.

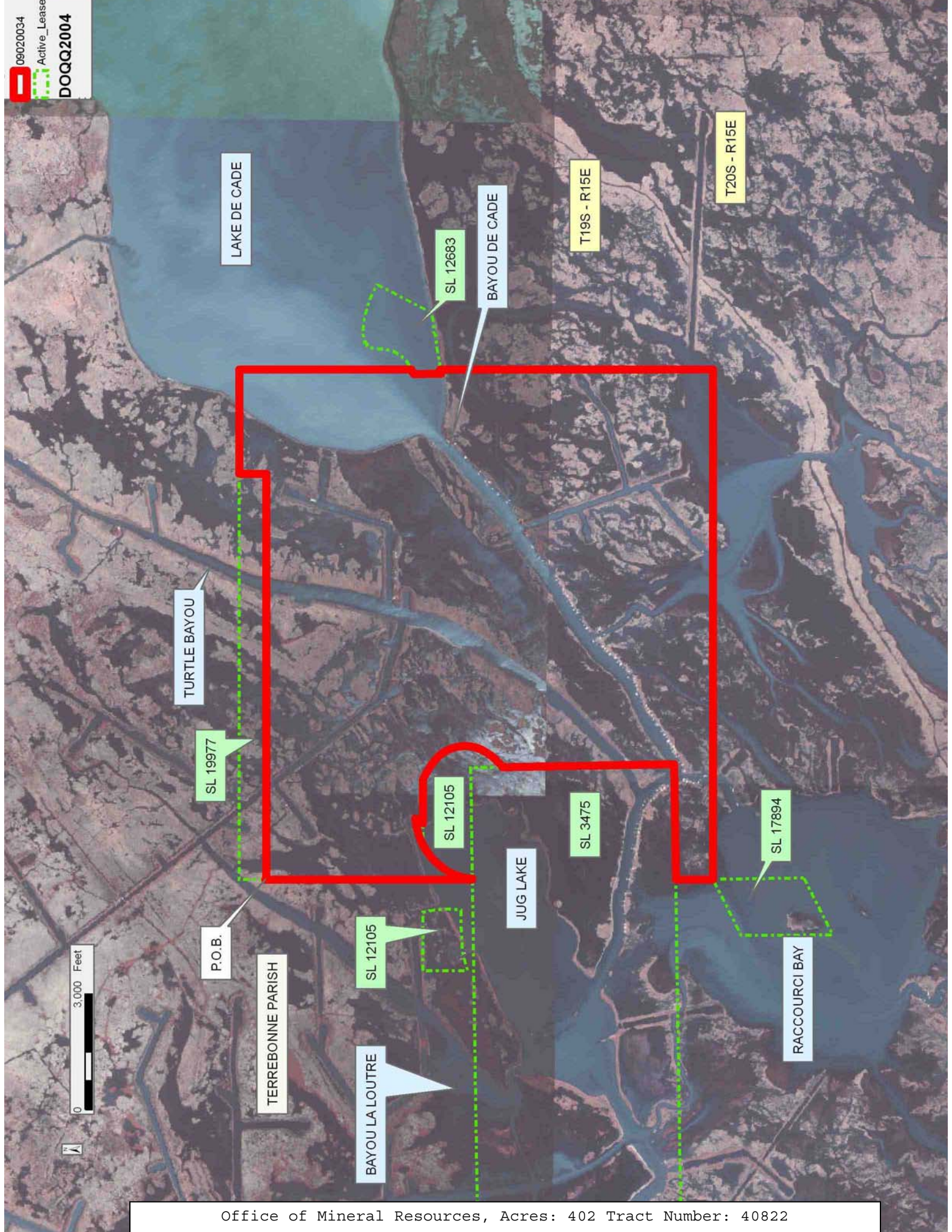
NOTE: The above description of the Tract nominated for lease has been provided and corrected, where required, exclusively by the nomination party. Any mineral lease selected from this Tract and awarded by the Louisiana State Mineral Board shall be without warranty of any kind, either express, implied, or statutory, including, but not limited to, the implied warranties of merchantability and fitness for a particular purpose. Should the mineral lease awarded by the Louisiana State Mineral Board be subsequently modified, cancelled or abrogated due to the existence of conflicting leases, operating agreements, private claims or other future obligations or conditions which may affect all or any portion of the leased Tract, it shall not relieve the Lessee of the obligation to pay any bonus due thereon to the Louisiana State Mineral Board, nor shall the Louisiana State Mineral Board be obligated to refund any consideration paid by the Lessor prior to such modification, cancellation, or abrogation, including, but not limited to, bonuses, rentals and royalties.

NOTE: The Office of Mineral Resources will require a minimum bonus of \$225 per acre and a minimum royalty of 23%.

NOTE: The State of Louisiana does hereby reserve, and this lease shall be subject to, the imprescriptible right of surface use in the nature of a servitude in favor of the Department of Natural Resources, including its Offices and Commissions, for the sole purpose of implementing, constructing, servicing and maintaining approved coastal zone management and/or restoration projects. Utilization of any and all rights derived under this lease by the mineral lessee, its agents, successors or assigns, shall not interfere with nor hinder the reasonable surface use by the Department of Natural Resources, its Offices or Commissions, as herein above reserved.

Applicant: STAFF OFFICE OF MINERAL RESOURCES

Bidder	Cash Payment	Price/Acre	Rental	Oil	Gas	Other



**TRACT 40823 - Terrebonne Parish, Louisiana**

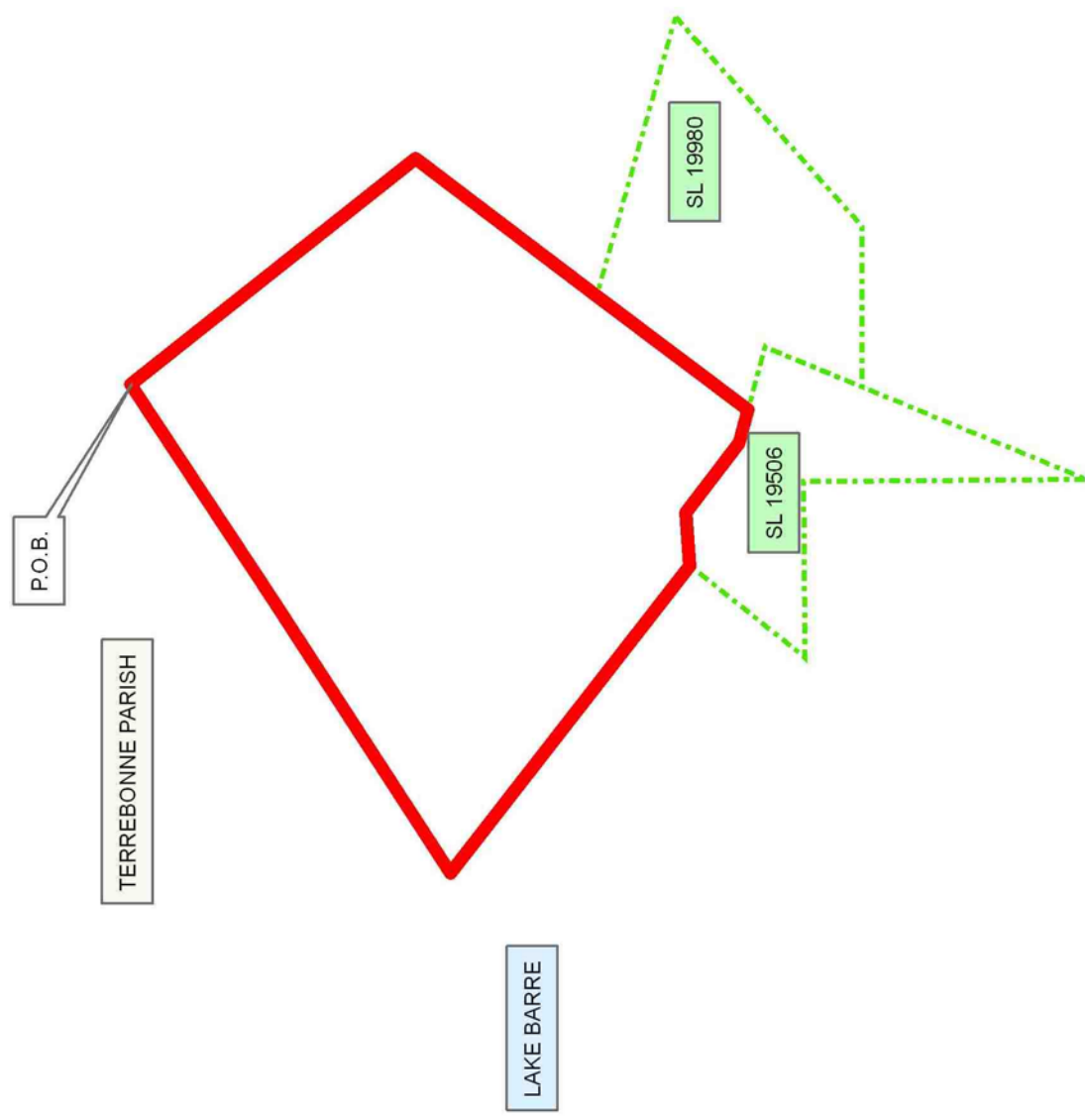
All of the lands now or formerly constituting the beds and bottoms of all water bodies of every nature and description as to which title is vested in the State of Louisiana, together with all islands arising therein and other lands formed by accretion or by reliction, where allowed by law, excepting tax adjudicated lands, and not presently under mineral lease on February 11, 2009, situated in Terrebonne Parish, Louisiana, and more particularly described as follows: Beginning at a point having Coordinates of X = 2,262,263.00 and Y = 219,828.90; thence South 38 degrees 24 minutes 29 seconds East 3,813.39 feet to a point having Coordinates of X = 2,264,632.10 and Y = 216,840.70; thence South 37 degrees 09 minutes 54 seconds West 2,392.77 feet to a point having Coordinates of X = 2,263,186.60 and Y = 214,933.90; thence South 36 degrees 56 minutes 14 seconds West 1,988.38 feet to a point on the North boundary of State Lease No. 19506 having Coordinates of X = 2,261,991.70 and Y = 213,344.60: thence along the North boundary of said State Lease No. 19506 the following courses and distances: North 75 degrees 23 minutes 39 seconds West 356.11 feet to a corner having Coordinates of X = 2,261,647.10 and Y = 213,434.40, North 52 degrees 17 minutes 38 seconds West 926.24 feet to a corner having Coordinates of X = 2,260,914.30 and Y = 214,000.90, and South 85 degrees 15 minutes 37 seconds West 559.11 feet to a corner having Coordinates of X = 2,260,357.10 and Y = 213,954.70; thence North 52 degrees 02 minutes 24 seconds West 4,092.26 feet to a point having Coordinates of X = 2,257,130.60 and Y = 216,471.90; thence North 56 degrees 58 minutes 02 seconds East 3,446.02 feet to a point having Coordinates of X = 2,260,019.60 and Y = 218,350.40; thence North 56 degrees 36 minutes 48 seconds East 2,686.78 feet to the point of beginning, containing approximately **577.66 acres**, all as more particularly outlined on a plat on file in the Office of Mineral Resources, Department of Natural Resources. All bearings, distances and coordinates are based on Louisiana Coordinate System of 1927, (North or South Zone), where applicable.

NOTE: The above description of the Tract nominated for lease has been provided and corrected, where required, exclusively by the nomination party. Any mineral lease selected from this Tract and awarded by the Louisiana State Mineral Board shall be without warranty of any kind, either express, implied, or statutory, including, but not limited to, the implied warranties of merchantability and fitness for a particular purpose. Should the mineral lease awarded by the Louisiana State Mineral Board be subsequently modified, cancelled or abrogated due to the existence of conflicting leases, operating agreements, private claims or other future obligations or conditions which may affect all or any portion of the leased Tract, it shall not relieve the Lessee of the obligation to pay any bonus due thereon to the Louisiana State Mineral Board, nor shall the Louisiana State Mineral Board be obligated to refund any consideration paid by the Lessor prior to such modification, cancellation, or abrogation, including, but not limited to, bonuses, rentals and royalties.

NOTE: The State of Louisiana does hereby reserve, and this lease shall be subject to, the imprescriptible right of surface use in the nature of a servitude in favor of the Department of Natural Resources, including its Offices and Commissions, for the sole purpose of implementing, constructing, servicing and maintaining approved coastal zone management and/or restoration projects. Utilization of any and all rights derived under this lease by the mineral lessee, its agents, successors or assigns, shall not interfere with nor hinder the reasonable surface use by the Department of Natural Resources, its Offices or Commissions, as herein above reserved.

Applicant: THEOPHILUS OIL, GAS & LAND SERVICES, LLC

Bidder	Cash Payment	Price/Acre	Rental	Oil	Gas	Other



**TRACT 40824 - Plaquemines Parish, Louisiana**

All of the lands now or formerly constituting the beds and bottoms of all water bodies of every nature and description as to which title is vested in the State of Louisiana, together with all islands arising therein and other lands formed by accretion or by reliction, where allowed by law, excepting tax adjudicated lands, and not presently under mineral lease on February 11, 2009, situated in Plaquemines Parish, Louisiana, and more particularly described as follows: Beginning at a point having Coordinates of X = 2,592,400.00 and Y = 214,670.00; thence East 17,351.88 feet to a point having Coordinates of X = 2,609,751.88 and Y = 214,670.00; thence South 10,588.42 feet to the Northeast corner of State Lease No. 17344, as amended having Coordinates of X = 2,609,751.88 and Y = 204,081.58; thence along the North, West and South boundary of said State Lease No. 17344 the following courses and distances: South 88 degrees 16 minutes 09 seconds West 3,725.14 feet to a corner having Coordinates of X = 2,606,028.44 and Y = 203,969.06, South 01 degrees 43 minutes 52 seconds East 2,478.19 feet to a corner having Coordinates of X = 2,606,103.30 and Y = 201,492.00 and North 88 degrees 16 minutes 08 seconds East 3,725.14 feet to its Southeast corner having Coordinates of X = 2,609,826.74 and Y = 201,604.53; thence South 3,534.53 feet to a point having Coordinates of X = 2,609,826.74 and Y = 198,070.00; thence West approximately 13,668 feet to a point on the Northeasterly boundary of State Lease No. 192, as amended having a Coordinate of Y = 198,070.00; thence Northwesterly, Northerly and Northwesterly along the boundary of said State Lease No. 192 to its point of intersection with a North-South line having a Coordinate of X = 2,592,400.00; thence North approximately 10,044 feet to the point of beginning, **LESS AND EXCEPT** any portion of Operating Agreement No. 21 that may lie within the above described tract, containing approximately **584 acres**, all as more particularly outlined on a plat on file in the Office of Mineral Resources, Department of Natural Resources. All bearings, distances and coordinates are based on Louisiana Coordinate System of 1927, (North or South Zone), where applicable.

NOTE: The above description of the Tract nominated for lease has been provided and corrected, where required, exclusively by the nomination party. Any mineral lease selected from this Tract and awarded by the Louisiana State Mineral Board shall be without warranty of any kind, either express, implied, or statutory, including, but not limited to, the implied warranties of merchantability and fitness for a particular purpose. Should the mineral lease awarded by the Louisiana State Mineral Board be subsequently modified, cancelled or abrogated due to the existence of conflicting leases, operating agreements, private claims or other future obligations or conditions which may affect all or any portion of the leased Tract, it shall not relieve the Lessee of the obligation to pay any bonus due thereon to the Louisiana State Mineral Board, nor shall the Louisiana State Mineral Board be obligated to refund any consideration paid by the Lessor prior to such modification, cancellation, or abrogation, including, but not limited to, bonuses, rentals and royalties.



NOTE: The State of Louisiana does hereby reserve, and this lease shall be subject to, the imprescriptible right of surface use in the nature of a servitude in favor of the Department of Natural Resources, including its Offices and Commissions, for the sole purpose of implementing, constructing, servicing and maintaining approved coastal zone management and/or restoration projects. Utilization of any and all rights derived under this lease by the mineral lessee, its agents, successors or assigns, shall not interfere with nor hinder the reasonable surface use by the Department of Natural Resources, its Offices or Commissions, as herein above reserved.

Applicant: THEOPHILUS OIL, GAS & LAND SERVICES, LLC

Bidder	Cash Payment	Price/Acre	Rental	Oil	Gas	Other

09020002

Active\_Lease

DOQQ2004

PLAQUEMINES PARISH

T21S - R30E

RED PASS

T22S - R30E

AO 0021

SPANISH PASS

BAYOU TAMBOUR

BAY TAMBOUR

P.O.B.

SANDY POINT BAY

SL 192

GULF OF MEXICO

BAY COQUETTE

0 4,000 Feet



**TRACT 40825 - Terrebonne Parish, Louisiana**

All of the lands now or formerly constituting the beds and bottoms of all water bodies of every nature and description as to which title is vested in the State of Louisiana, together with all islands arising therein and other lands formed by accretion or by reliction, where allowed by law, excepting tax adjudicated lands, and not presently under mineral lease on February 11, 2009, situated in Terrebonne Parish, Louisiana, and more particularly described as follows: Beginning at a point having Coordinates of X = 2,252,550.00 and Y = 210,529.66; thence East 4,997.29 feet to a point on the West boundary of State Lease No. 199, as amended, having Coordinates of X = 2,257,547.29 and Y = 210,529.66; thence South 00 degrees 25 minutes 10 seconds East 253.01 feet along the West boundary of said State Lease No. 199, as amended, to a Southwest corner having Coordinates of X = 2,257,549.14 and Y = 210,276.66; thence North 58 degrees 22 minutes 49 seconds West 213.46 feet to a point having Coordinates of X = 2,257,367.37 and Y = 210,388.57; thence South 19 degrees 31 minutes 30 seconds West 3,414.94 feet to a point having Coordinates of X = 2,256,226.04 and Y = 207,170.00; thence West 3,676.04 feet to a point having Coordinates of X = 2,252,550.00 and Y = 207,170.00; thence North 3,359.66 feet to the point of beginning, containing approximately **330.20 acres**, all as more particularly outlined on a plat on file in the Office of Mineral Resources, Department of Natural Resources. All bearings, distances and coordinates are based on Louisiana Coordinate System of 1927, (North or South Zone), where applicable.

NOTE: The above description of the Tract nominated for lease has been provided and corrected, where required, exclusively by the nomination party. Any mineral lease selected from this Tract and awarded by the Louisiana State Mineral Board shall be without warranty of any kind, either express, implied, or statutory, including, but not limited to, the implied warranties of merchantability and fitness for a particular purpose. Should the mineral lease awarded by the Louisiana State Mineral Board be subsequently modified, cancelled or abrogated due to the existence of conflicting leases, operating agreements, private claims or other future obligations or conditions which may affect all or any portion of the leased Tract, it shall not relieve the Lessee of the obligation to pay any bonus due thereon to the Louisiana State Mineral Board, nor shall the Louisiana State Mineral Board be obligated to refund any consideration paid by the Lessor prior to such modification, cancellation, or abrogation, including, but not limited to, bonuses, rentals and royalties.

NOTE: The State of Louisiana does hereby reserve, and this lease shall be subject to, the imprescriptible right of surface use in the nature of a servitude in favor of the Department of Natural Resources, including its Offices and Commissions, for the sole purpose of implementing, constructing, servicing and maintaining approved coastal zone management and/or restoration projects. Utilization of any and all rights derived under this lease by the mineral lessee, its agents, successors or assigns, shall not interfere with nor hinder the reasonable surface use by the

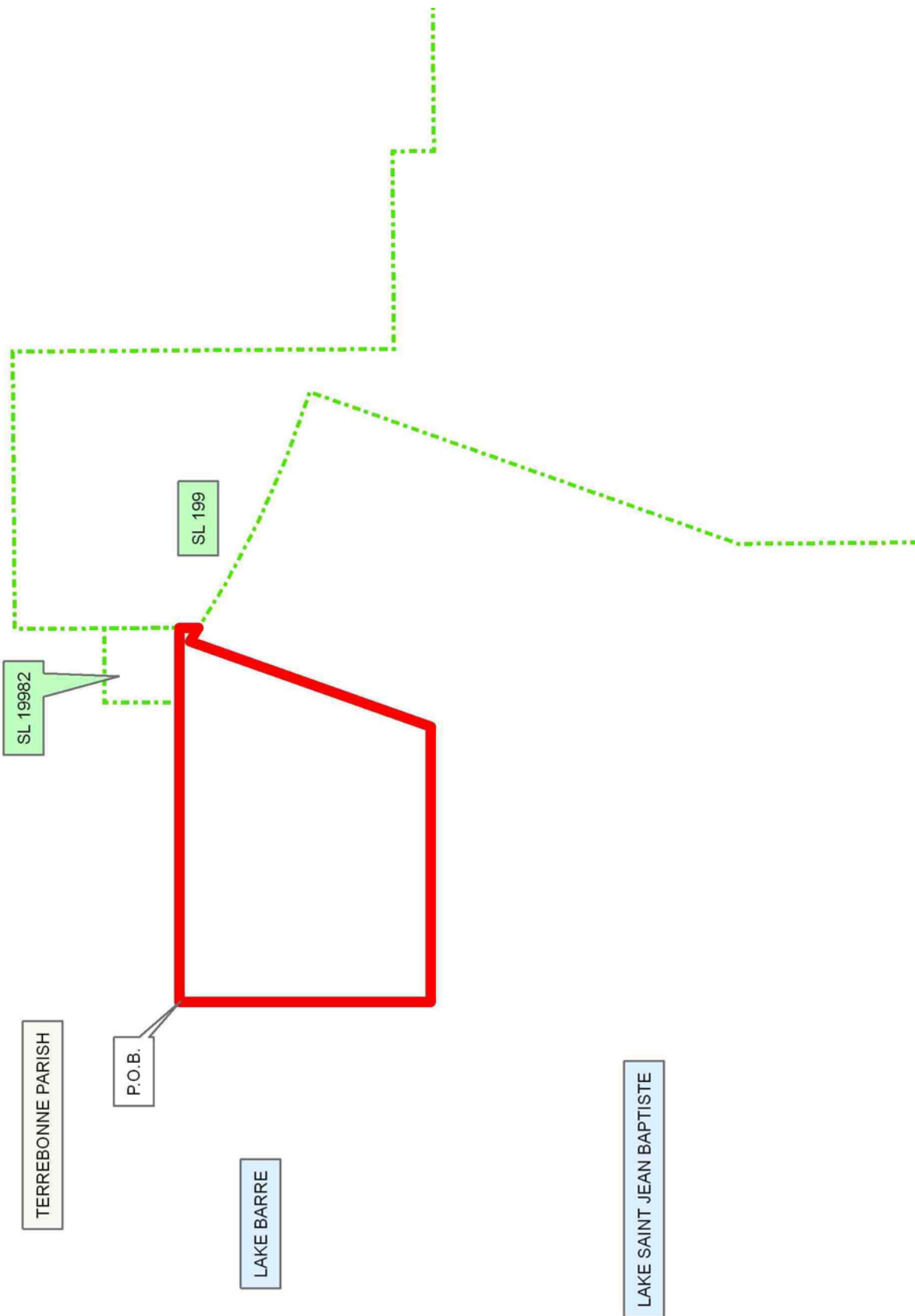
Department of Natural Resources, its Offices or Commissions, as herein above reserved.

Applicant: THEOPHILUS OIL, GAS & LAND SERVICES, LLC

Bidder	Cash Payment	Price/Acre	Rental	Oil	Gas	Other

09020008

Active\_Lease



**TRACT 40826 - Terrebonne Parish, Louisiana**

All of the lands now or formerly constituting the beds and bottoms of all water bodies of every nature and description as to which title is vested in the State of Louisiana, together with all islands arising therein and other lands formed by accretion or by reliction, where allowed by law, excepting tax adjudicated lands, and not presently under mineral lease on February 11, 2009, situated in Terrebonne Parish, Louisiana, and more particularly described as follows: Beginning at a point having Coordinates of X = 2,252,550.00 and Y = 207,170.00; thence East 3,676.04 feet to a point having Coordinates of X = 2,256,226.04 and Y = 207,170.00; thence South 19 degrees 31 minutes 30 seconds West 3,183.04 feet to a point having Coordinates of X = 2,255,162.21 and Y = 204,170.00; thence West 2,612.21 feet to a point having Coordinates of X = 2,252,550.00 and Y = 204,170.00; thence North 3,000.00 feet to the point of beginning, containing approximately **216.54 acres**, all as more particularly outlined on a plat on file in the Office of Mineral Resources, Department of Natural Resources. All bearings, distances and coordinates are based on Louisiana Coordinate System of 1927, (North or South Zone), where applicable.

NOTE: The above description of the Tract nominated for lease has been provided and corrected, where required, exclusively by the nomination party. Any mineral lease selected from this Tract and awarded by the Louisiana State Mineral Board shall be without warranty of any kind, either express, implied, or statutory, including, but not limited to, the implied warranties of merchantability and fitness for a particular purpose. Should the mineral lease awarded by the Louisiana State Mineral Board be subsequently modified, cancelled or abrogated due to the existence of conflicting leases, operating agreements, private claims or other future obligations or conditions which may affect all or any portion of the leased Tract, it shall not relieve the Lessee of the obligation to pay any bonus due thereon to the Louisiana State Mineral Board, nor shall the Louisiana State Mineral Board be obligated to refund any consideration paid by the Lessor prior to such modification, cancellation, or abrogation, including, but not limited to, bonuses, rentals and royalties.

NOTE: The State of Louisiana does hereby reserve, and this lease shall be subject to, the imprescriptible right of surface use in the nature of a servitude in favor of the Department of Natural Resources, including its Offices and Commissions, for the sole purpose of implementing, constructing, servicing and maintaining approved coastal zone management and/or restoration projects. Utilization of any and all rights derived under this lease by the mineral lessee, its agents, successors or assigns, shall not interfere with nor hinder the reasonable surface use by the Department of Natural Resources, its Offices or Commissions, as herein above reserved.

Applicant: THEOPHILUS OIL, GAS & LAND SERVICES, LLC

Bidder	Cash Payment	Price/Acre	Rental	Oil	Gas	Other

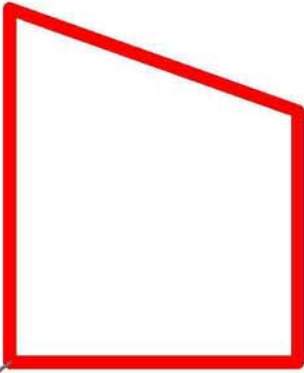


TERREBONNE PARISH

LAKE BARRE

LAKE SAINT JEAN BAPTISTE

P.O.B.





**TRACT 40827 - Terrebonne Parish, Louisiana**

All of the lands now or formerly constituting the beds and bottoms of all water bodies of every nature and description as to which title is vested in the State of Louisiana, together with all islands arising therein and other lands formed by accretion or by reliction, where allowed by law, excepting tax adjudicated lands, and not presently under mineral lease on February 11, 2009, situated in Terrebonne Parish, Louisiana, and more particularly described as follows: Beginning at a point having Coordinates of X = 2,252,550.00 and Y = 204,170.00; thence East 2,612.21 feet to a point having Coordinates of X = 2,255,162.21 and Y = 204,170.00; thence South 19 degrees 31 minutes 30 seconds West 1,081.78 feet to a point having Coordinates of X = 2,254,800.66 and Y = 203,150.43; thence South 58 degrees 22 minutes 44 seconds East 940.86 feet to a point having Coordinates of X = 2,255,601.83 and Y = 202,657.13; thence South 62 degrees 20 minutes 39 seconds East 929.31 feet to a point having Coordinates of X = 2,256,424.97 and Y = 202,225.79; thence South 66 degrees 23 minutes 18 seconds East 922.32 feet to a point having Coordinates of X = 2,257,270.07 and Y = 201,856.36; thence South 70 degrees 28 minutes 30 seconds East 919.97 feet to a point having Coordinates of X = 2,258,137.14 and Y = 201,548.89; thence North 19 degrees 31 minutes 30 seconds East 1,594.58 feet to a corner located on the West boundary of State Lease No. 199, as amended, having Coordinates of X = 2,258,670.08 and Y = 203,051.77; thence South 00 degrees 25 minutes 10 seconds East 1,881.82 feet along the West boundary of said State Lease No. 199, as amended, to a point having Coordinates of X = 2,258,683.86 and Y = 201,170.00; thence West 6,133.86 feet to a point having Coordinates of X = 2,252,550.00 and Y = 201,170.00; thence North 3,000.00 feet to the point of beginning, containing approximately **256.78 acres**, all as more particularly outlined on a plat on file in the Office of Mineral Resources, Department of Natural Resources. All bearings, distances and coordinates are based on Louisiana Coordinate System of 1927, (North or South Zone), where applicable.

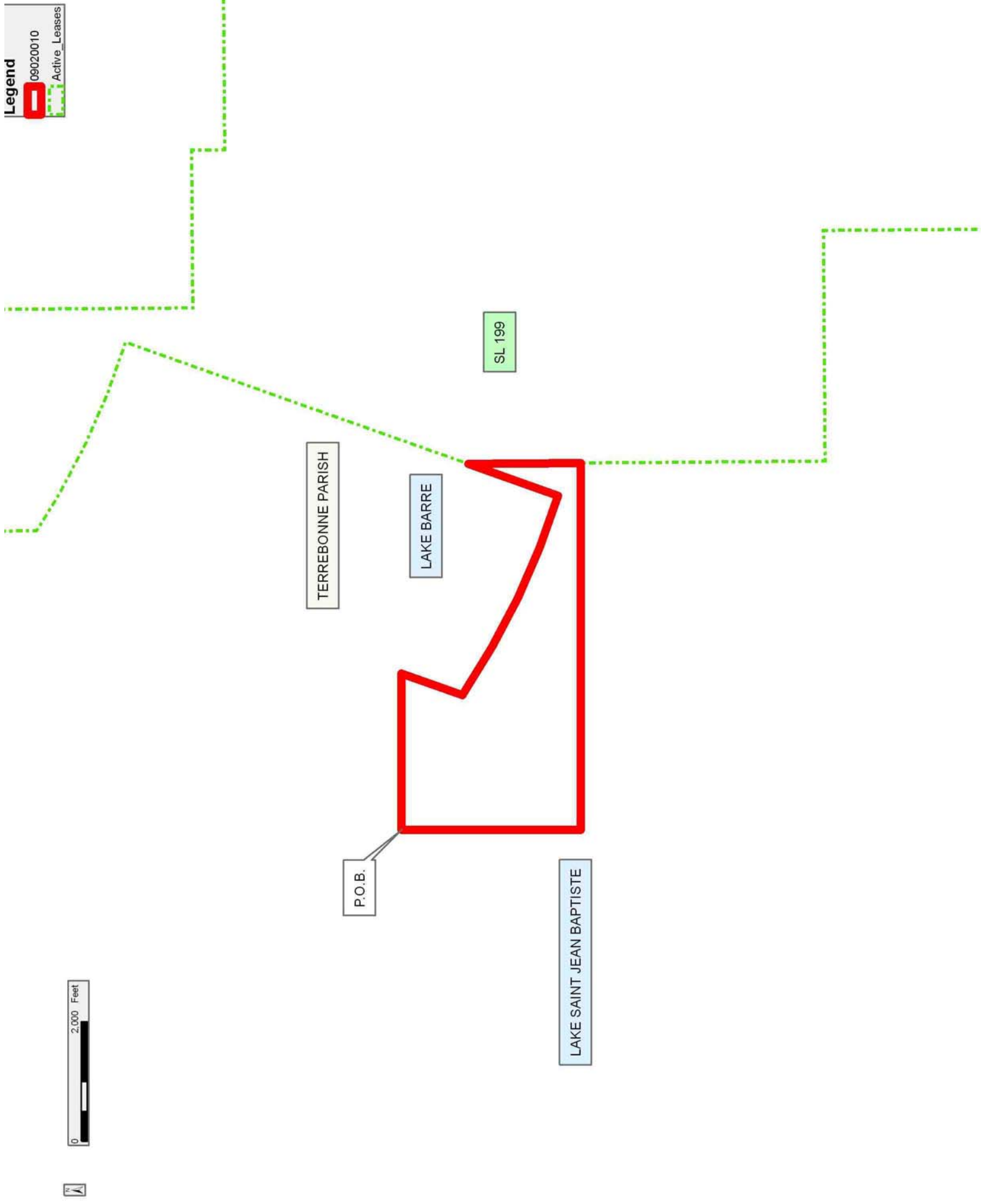
NOTE: The above description of the Tract nominated for lease has been provided and corrected, where required, exclusively by the nomination party. Any mineral lease selected from this Tract and awarded by the Louisiana State Mineral Board shall be without warranty of any kind, either express, implied, or statutory, including, but not limited to, the implied warranties of merchantability and fitness for a particular purpose. Should the mineral lease awarded by the Louisiana State Mineral Board be subsequently modified, cancelled or abrogated due to the existence of conflicting leases, operating agreements, private claims or other future obligations or conditions which may affect all or any portion of the leased Tract, it shall not relieve the Lessee of the obligation to pay any bonus due thereon to the Louisiana State Mineral Board, nor shall the Louisiana State Mineral Board be obligated to refund any consideration paid by the Lessor prior to such modification, cancellation, or abrogation, including, but not limited to, bonuses, rentals and royalties.

NOTE: The State of Louisiana does hereby reserve, and this lease shall be subject to, the imprescriptible right of surface use in the nature of a servitude in favor of the Department of Natural Resources, including its Offices and Commissions, for the sole purpose of implementing, constructing, servicing and maintaining approved coastal zone management and/or restoration projects. Utilization of any and all rights derived under this lease by the mineral lessee, its agents, successors or assigns, shall not interfere with nor hinder the reasonable surface use by the Department of Natural Resources, its Offices or Commissions, as herein above reserved.

Applicant: THEOPHILUS OIL, GAS & LAND SERVICES, LLC

Bidder	Cash Payment	Price/Acre	Rental	Oil	Gas	Other

**Legend**  
09020010  
Active\_Leases



**TRACT 40828 - Terrebonne Parish, Louisiana**

All of the lands now or formerly constituting the beds and bottoms of all water bodies of every nature and description as to which title is vested in the State of Louisiana, together with all islands arising therein and other lands formed by accretion or by reliction, where allowed by law, excepting tax adjudicated lands, and not presently under mineral lease on February 11, 2009, situated in Terrebonne Parish, Louisiana, and more particularly described as follows: Beginning at a point having Coordinates of X = 2,252,550.00 and Y = 201,170.00; thence East 6,133.86 feet to a point on the West boundary of State Lease No. 199, as amended, having Coordinates of X = 2,258,683.86 and Y = 201,170.00; thence South 00 degrees 25 minutes 10 seconds East 3,000.08 feet along the West boundary of said State Lease No. 199, as amended, to a point having Coordinates of X = 2,258,705.82 and Y = 198,170.00; thence West 6,155.82 feet to a point having Coordinates of X = 2,252,550.00 and Y = 198,170.00; thence North 3,000.00 feet to the point of beginning, containing approximately **423.20 acres**, all as more particularly outlined on a plat on file in the Office of Mineral Resources, Department of Natural Resources. All bearings, distances and coordinates are based on Louisiana Coordinate System of 1927, (North or South Zone), where applicable.

NOTE: The above description of the Tract nominated for lease has been provided and corrected, where required, exclusively by the nomination party. Any mineral lease selected from this Tract and awarded by the Louisiana State Mineral Board shall be without warranty of any kind, either express, implied, or statutory, including, but not limited to, the implied warranties of merchantability and fitness for a particular purpose. Should the mineral lease awarded by the Louisiana State Mineral Board be subsequently modified, cancelled or abrogated due to the existence of conflicting leases, operating agreements, private claims or other future obligations or conditions which may affect all or any portion of the leased Tract, it shall not relieve the Lessee of the obligation to pay any bonus due thereon to the Louisiana State Mineral Board, nor shall the Louisiana State Mineral Board be obligated to refund any consideration paid by the Lessor prior to such modification, cancellation, or abrogation, including, but not limited to, bonuses, rentals and royalties.

NOTE: The State of Louisiana does hereby reserve, and this lease shall be subject to, the imprescriptible right of surface use in the nature of a servitude in favor of the Department of Natural Resources, including its Offices and Commissions, for the sole purpose of implementing, constructing, servicing and maintaining approved coastal zone management and/or restoration projects. Utilization of any and all rights derived under this lease by the mineral lessee, its agents, successors or assigns, shall not interfere with nor hinder the reasonable surface use by the Department of Natural Resources, its Offices or Commissions, as herein above reserved.

Applicant: THEOPHILUS OIL, GAS & LAND SERVICES, LLC

Bidder	Cash Payment	Price/Acre	Rental	Oil	Gas	Other

09020011  
Active\_Lease

