

TRACT 40809 - Bienville Bossier and Red River Parishes, Louisiana

All of the lands now or formerly constituting the beds and bottoms of all water bodies of every nature and description as to which title is vested in the State of Louisiana, together with all islands arising therein and other lands formed by accretion or by reliction, where allowed by law, excepting tax adjudicated lands, and not presently under mineral lease on February 11, 2009, situated in Bienville Bossier and Red River Parishes, Louisiana, and more particularly described as follows: Beginning at a point on the East line of State Lease No. 19765 having Coordinates of X = 1,708,957.21 and Y = 561,300.00; thence North 10,665.45 feet along the East line of said State Lease No. 19765 to a point having Coordinates of X = 1,708,957.21 and Y = 571,965.45; thence South 89 degrees 48 minutes 54 seconds East 15,842.87 feet to a point having Coordinates of X = 1,724,800.00 and Y = 571,914.28; thence South 10,614.28 feet to a point having Coordinates of X = 1,724,800.00 and Y = 561,300.00; thence West 15,842.79 feet to the point of beginning, (This lease includes only waterbottoms claimed and owned by the state and specifically excludes any land which the state may claim or own and to which the mineral rights are vested in the state), containing approximately **56 acres**, all as more particularly outlined on a plat on file in the Office of Mineral Resources, Department of Natural Resources. All bearings, distances and coordinates are based on Louisiana Coordinate System of 1927, (North or South Zone), where applicable.

NOTE: The above description of the Tract nominated for lease has been provided and corrected, where required, exclusively by the nomination party. Any mineral lease selected from this Tract and awarded by the Louisiana State Mineral Board shall be without warranty of any kind, either express, implied, or statutory, including, but not limited to, the implied warranties of merchantability and fitness for a particular purpose. Should the mineral lease awarded by the Louisiana State Mineral Board be subsequently modified, cancelled or abrogated due to the existence of conflicting leases, operating agreements, private claims or other future obligations or conditions which may affect all or any portion of the leased Tract, it shall not relieve the Lessee of the obligation to pay any bonus due thereon to the Louisiana State Mineral Board, nor shall the Louisiana State Mineral Board be obligated to refund any consideration paid by the Lessor prior to such modification, cancellation, or abrogation, including, but not limited to, bonuses, rentals and royalties.

Bidder	Cash Payment	Price/Acre	Rental	Oil	Gas	Other

Applicant: CLOUDVEIL EXPLORATION

09020007
Wildlife
Active_Lease
Counties
DOQQ2004

T15N - R10W

T14N - R10W

SL 19762

SL 19795

SL 19796

LOGGY BAYOU WMA

LOGGY BAYOU

0 3,000 Feet

SL 19764

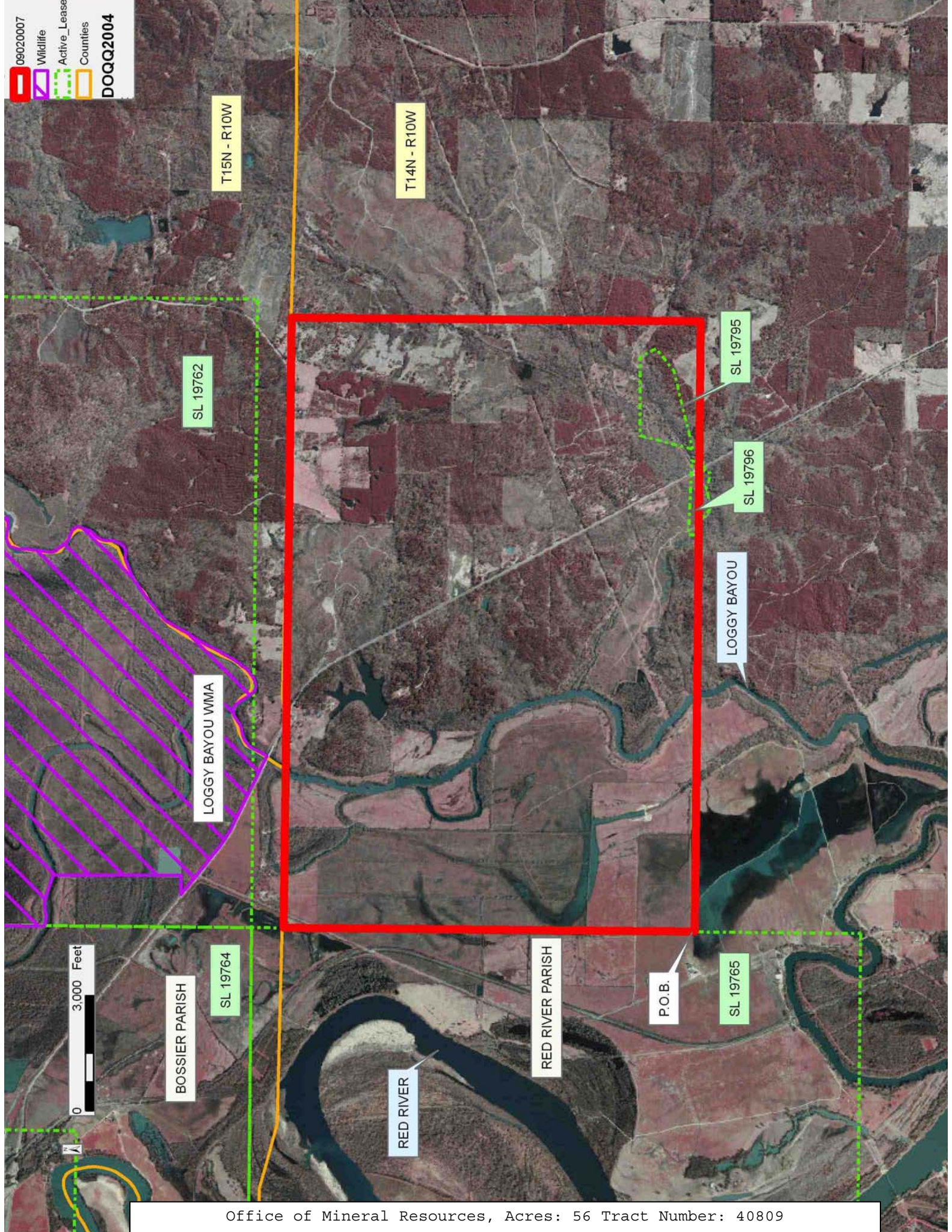
BOSSIER PARISH

RED RIVER PARISH

P.O.B.

SL 19765

RED RIVER



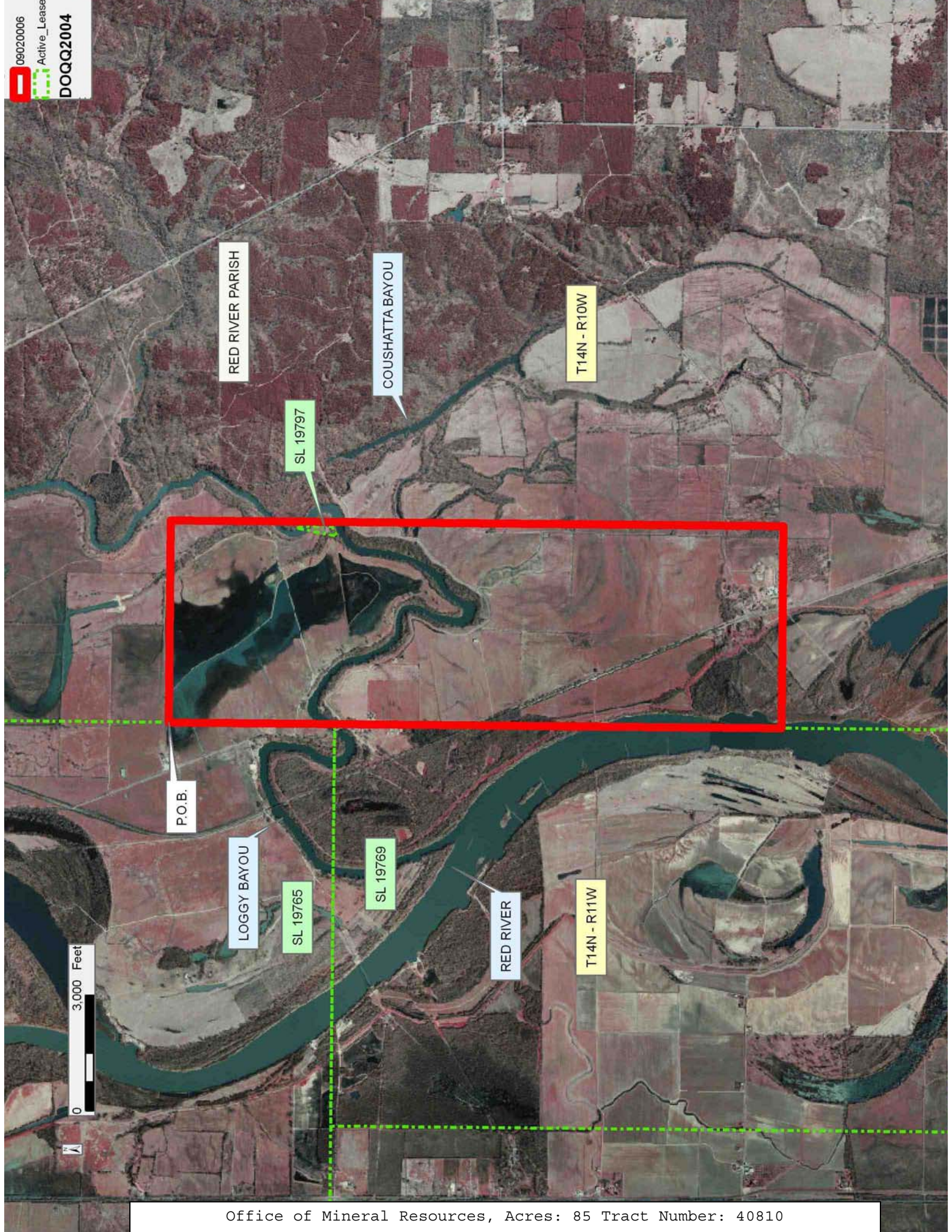
TRACT 40810 - Red River Parish, Louisiana

All of the lands now or formerly constituting the beds and bottoms of all water bodies of every nature and description as to which title is vested in the State of Louisiana, together with all islands arising therein and other lands formed by accretion or by reliction, where allowed by law, excepting tax adjudicated lands, and not presently under mineral lease on February 11, 2009, situated in Red River Parish, Louisiana, and more particularly described as follows: Beginning at a point on the East line of State Lease No. 19765 having Coordinates of X = 1,708,957.21 and Y = 561,300.00; thence East 5,242.79 feet to a point having Coordinates of X = 1,714,200.00 and Y = 561,300.00; thence South 15,900.00 feet to a point having Coordinates of X = 1,714,200.00 and Y = 545,400.00; thence West 5,242.79 feet to a point on the East line of State Lease No. 19769 to a point having Coordinates of X = 1,708,957.21 and Y = 545,400.00; thence North 11,594.00 feet along the East line of said State Lease No. 19769 to its Northeast corner, said corner also being the Southeast corner of said State Lease No. 19765, having Coordinates of X = 1,708,957.21 and Y = 556,994.00; thence North 4,306.00 feet along the East line of said State Lease No. 19765 to the Point of Beginning, containing approximately **85 acres**, all as more particularly outlined on a plat on file in the Office of Mineral Resources, Department of Natural Resources. All bearings, distances and coordinates are based on Louisiana Coordinate System of 1927, (North or South Zone), where applicable.

NOTE: The above description of the Tract nominated for lease has been provided and corrected, where required, exclusively by the nomination party. Any mineral lease selected from this Tract and awarded by the Louisiana State Mineral Board shall be without warranty of any kind, either express, implied, or statutory, including, but not limited to, the implied warranties of merchantability and fitness for a particular purpose. Should the mineral lease awarded by the Louisiana State Mineral Board be subsequently modified, cancelled or abrogated due to the existence of conflicting leases, operating agreements, private claims or other future obligations or conditions which may affect all or any portion of the leased Tract, it shall not relieve the Lessee of the obligation to pay any bonus due thereon to the Louisiana State Mineral Board, nor shall the Louisiana State Mineral Board be obligated to refund any consideration paid by the Lessor prior to such modification, cancellation, or abrogation, including, but not limited to, bonuses, rentals and royalties.

Applicant: CLOUDVEIL EXPLORATION

Bidder	Cash Payment	Price/Acre	Rental	Oil	Gas	Other



TRACT 40811 - Iberville Parish, Louisiana

All of the lands now or formerly constituting the beds and bottoms of all water bodies of every nature and description as to which title is vested in the State of Louisiana, together with all islands arising therein and other lands formed by accretion or by reliction, where allowed by law, excepting tax adjudicated lands, and not presently under mineral lease on February 11, 2009, situated in Iberville Parish, Louisiana, and more particularly described as follows: Beginning at a point having Coordinates of X = 1,989,100.00 and Y = 607,400.00; thence East 14,200.00 feet to a point having Coordinates of X = 2,003,300.00 and Y = 607,400.00; thence South 5,400.00 feet to the Northwest corner of Operating Agreement No. 215 having Coordinates of X = 2,003,300.00 and Y = 602,000.00; thence South 5,500.00 feet along the West line of said Operating Agreement No. 215 to its Southwest corner having Coordinates of X = 2,003,300.00 and Y = 596,500.00; thence South 3,300.00 feet to a point having Coordinates of X = 2,003,300.00 and Y = 593,200.00; thence West 14,200.00 feet to a point having Coordinates of X = 1,989,100.00 and Y = 593,200.00; thence North 14,200.00 feet to the Point of Beginning, containing approximately **61 acres**, all as more particularly outlined on a plat on file in the Office of Mineral Resources, Department of Natural Resources. All bearings, distances and coordinates are based on Louisiana Coordinate System of 1927, (North or South Zone), where applicable.

NOTE: The above description of the Tract nominated for lease has been provided and corrected, where required, exclusively by the nomination party. Any mineral lease selected from this Tract and awarded by the Louisiana State Mineral Board shall be without warranty of any kind, either express, implied, or statutory, including, but not limited to, the implied warranties of merchantability and fitness for a particular purpose. Should the mineral lease awarded by the Louisiana State Mineral Board be subsequently modified, cancelled or abrogated due to the existence of conflicting leases, operating agreements, private claims or other future obligations or conditions which may affect all or any portion of the leased Tract, it shall not relieve the Lessee of the obligation to pay any bonus due thereon to the Louisiana State Mineral Board, nor shall the Louisiana State Mineral Board be obligated to refund any consideration paid by the Lessor prior to such modification, cancellation, or abrogation, including, but not limited to, bonuses, rentals and royalties.

Applicant: ALBERT S. RUFFIN, JR.

Bidder	Cash Payment	Price/Acre	Rental	Oil	Gas	Other

Legend

- 09020004
- - - Active_Leases
- - - Counties

DOQQ2004

WEST BATON ROUGE PARISH

CHOCTAW BAYOU

INTRACOASTAL WATERWAY

AO 0215

IBERVILLE PARISH

BAYOU GROSSE TETE

0 3,000 Feet

P.O.B.

T8S - R11E

T9S - R11E



TRACT 40812 - Cameron Parish, Louisiana

All of the lands now or formerly constituting the beds and bottoms of all water bodies of every nature and description as to which title is vested in the State of Louisiana, together with all islands arising therein and other lands formed by accretion or by reliction, where allowed by law, excepting tax adjudicated lands, and not presently under mineral lease on February 11, 2009, situated in Cameron Parish, Louisiana, and more particularly described as follows: Beginning at a point having Coordinates of X = 1,464,132.96 and Y = 397,977.07; thence West 10,154.86 feet to a point having Coordinates of X = 1,453,978.10 and Y = 397,977.07; thence North 6,491.30 feet to a point having Coordinates of X = 1,453,978.10 and Y = 404,468.37; thence East 10,154.86 feet to a point having Coordinates of X = 1,464,132.96 and Y = 404,468.37; thence South 6,491.30 feet to the point of beginning, **LESS AND EXCEPT** those portions of State Lease No. 13893, as amended, State Lease No. 14357, as amended, and State Lease No. 19666 contained within the area described above, containing approximately **763 acres**, all as more particularly outlined on a plat on file in the Office of Mineral Resources, Department of Natural Resources. All bearings, distances and coordinates are based on Louisiana Coordinate System of 1927, (North or South Zone), where applicable.

NOTE: The above description of the Tract nominated for lease has been provided and corrected, where required, exclusively by the nomination party. Any mineral lease selected from this Tract and awarded by the Louisiana State Mineral Board shall be without warranty of any kind, either express, implied, or statutory, including, but not limited to, the implied warranties of merchantability and fitness for a particular purpose. Should the mineral lease awarded by the Louisiana State Mineral Board be subsequently modified, cancelled or abrogated due to the existence of conflicting leases, operating agreements, private claims or other future obligations or conditions which may affect all or any portion of the leased Tract, it shall not relieve the Lessee of the obligation to pay any bonus due thereon to the Louisiana State Mineral Board, nor shall the Louisiana State Mineral Board be obligated to refund any consideration paid by the Lessor prior to such modification, cancellation, or abrogation, including, but not limited to, bonuses, rentals and royalties.

NOTE: A bid of less than the minimum of \$400.00 per acre and 22.5% royalty shall not be considered.

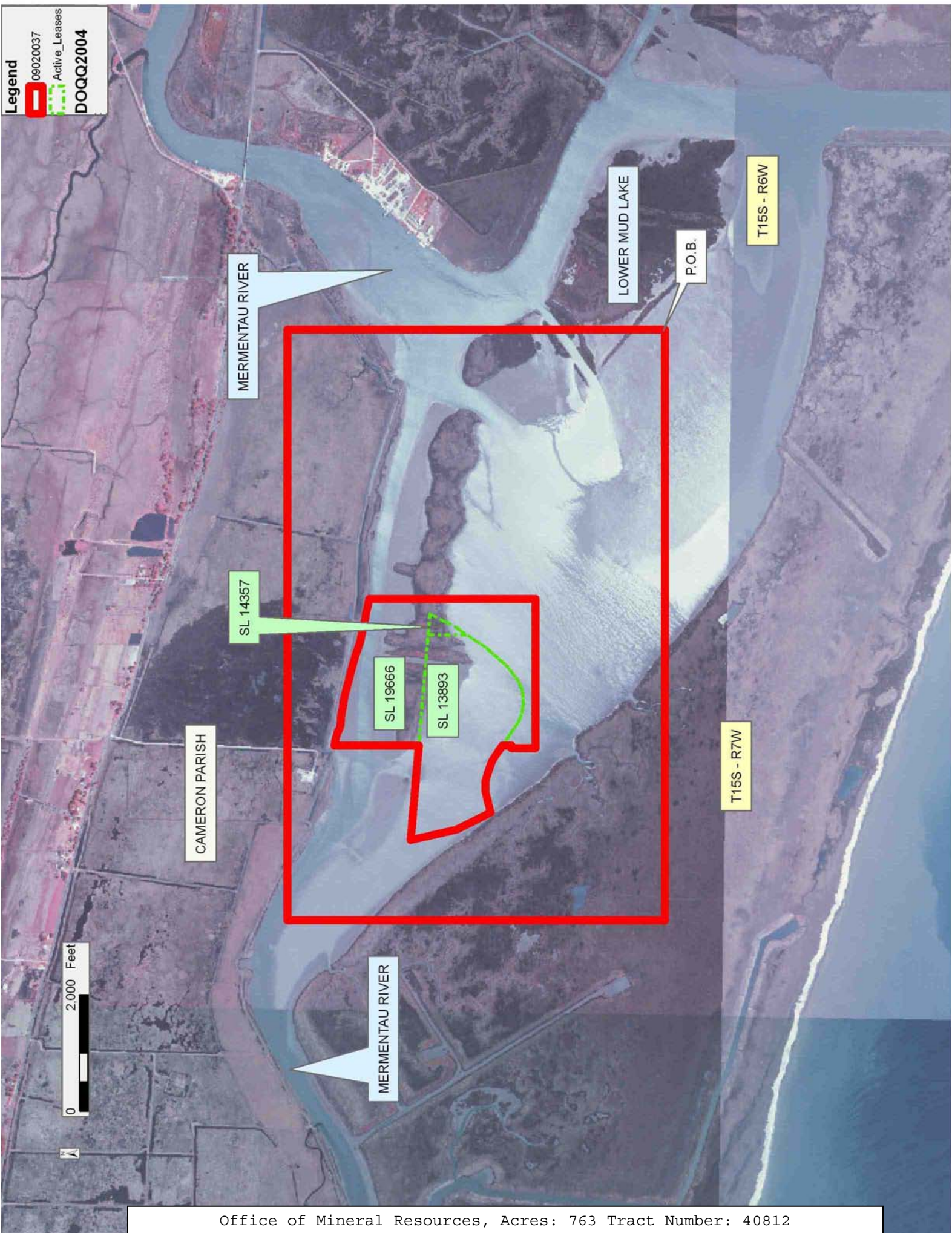
NOTE: The State of Louisiana does hereby reserve, and this lease shall be subject to, the imprescriptible right of surface use in the nature of a servitude in favor of the Department of Natural Resources, including its Offices and Commissions, for the sole purpose of implementing, constructing, servicing and maintaining approved coastal zone management and/or restoration projects. Utilization of any and all rights derived under this lease by the mineral lessee, its agents, successors or assigns, shall not interfere with nor hinder the reasonable surface use by the

Department of Natural Resources, its Offices or Commissions, as herein above reserved.

Applicant: HILLIARD ACQUISITIONS X LLC

Bidder	Cash Payment	Price/Acre	Rental	Oil	Gas	Other

Legend
09020037
Active_Leases
DOQQ2004



TRACT 40813 - Plaquemines Parish, Louisiana

All of the lands now or formerly constituting the beds and bottoms of all water bodies of every nature and description as to which title is vested in the State of Louisiana, together with all islands arising therein and other lands formed by accretion or by reliction, where allowed by law, excepting tax adjudicated lands, and not presently under mineral lease on February 11, 2009, situated in Plaquemines Parish, Louisiana, and more particularly described as follows: Beginning at a point having Coordinates of X = 2,566,088.95 and Y = 299,902.19; thence North 89 degrees 58 minutes 41 seconds East 14399.87 feet to a point having Coordinates of X = 2,580,488.81 and Y = 299,907.75; thence Southerly approximately 7525 feet to a point on the Northern boundary of State Lease No. 195, as amended; thence Westerly approximately 7,647 feet along the Northern boundary of said State Lease No. 195 to a point said to be its Northwest corner; thence Westerly approximately 6,842 feet to a point having Coordinates of X = 2,566,088.95 and Y = 292,411.80; thence North 7490.39 feet to the Point of Beginning, containing approximately **2485 acres**, all as more particularly outlined on a plat on file in the Office of Mineral Resources, Department of Natural Resources. All bearings, distances and coordinates are based on Louisiana Coordinate System of 1927, (North or South Zone), where applicable.

NOTE: The above description of the Tract nominated for lease has been provided and corrected, where required, exclusively by the nomination party. Any mineral lease selected from this Tract and awarded by the Louisiana State Mineral Board shall be without warranty of any kind, either express, implied, or statutory, including, but not limited to, the implied warranties of merchantability and fitness for a particular purpose. Should the mineral lease awarded by the Louisiana State Mineral Board be subsequently modified, cancelled or abrogated due to the existence of conflicting leases, operating agreements, private claims or other future obligations or conditions which may affect all or any portion of the leased Tract, it shall not relieve the Lessee of the obligation to pay any bonus due thereon to the Louisiana State Mineral Board, nor shall the Louisiana State Mineral Board be obligated to refund any consideration paid by the Lessor prior to such modification, cancellation, or abrogation, including, but not limited to, bonuses, rentals and royalties.

NOTE: The State of Louisiana does hereby reserve, and this lease shall be subject to, the imprescriptible right of surface use in the nature of a servitude in favor of the Department of Natural Resources, including its Offices and Commissions, for the sole purpose of implementing, constructing, servicing and maintaining approved coastal zone management and/or restoration projects. Utilization of any and all rights derived under this lease by the mineral lessee, its agents, successors or assigns, shall not interfere with nor hinder the reasonable surface use by the Department of Natural Resources, its Offices or Commissions, as herein above reserved.

NOTE: The Department of Wildlife and Fisheries has designated certain areas in the coastal waters of the State of Louisiana as Oyster Seed Bed Areas. The exact location of those Seed Bed Areas must be obtained from the Department of Wildlife and Fisheries and any work done under a mineral lease from the State of Louisiana may necessarily be conducted in conformity with the rules and regulations promulgated by the said Department of Wildlife and Fisheries for Oyster Seed Bed Areas.

Applicant: CYPRESS ENERGY CORPORATION

Bidder	Cash Payment	Price/Acre	Rental	Oil	Gas	Other

Legend
09020024
Active_Leases
DOQQ2004

GULF OF MEXICO

PLAQUEMINES PARISH

CALIFORNIA BAY

P.O.B.

SL 195



TRACT 40814 - Plaquemines Parish, Louisiana

All of the lands now or formerly constituting the beds and bottoms of all water bodies of every nature and description as to which title is vested in the State of Louisiana, together with all islands arising therein and other lands formed by accretion or by reliction, where allowed by law, excepting tax adjudicated lands, and not presently under mineral lease on February 11, 2009, situated in Plaquemines Parish, Louisiana, and more particularly described as follows: Beginning at a point having Coordinates of X = 2,580,488.81 and Y = 299,907.75; thence South 89 degrees 55 minutes 39 seconds West 14,376.51 feet to a point having Coordinates of X = 2,594,865.31 and Y = 299,889.54; thence Southerly approximately 7,679 feet to a point on the Northern boundary of State Lease No. 195, as amended; thence Westerly approximately 14,216 feet along the Northern boundary of said State Lease No. 195 to a point; thence Northerly approximately 7,525 feet to the Point of Beginning containing approximately **2,491 acres**, all as more particularly outlined on a plat on file in the Office of Mineral Resources, Department of Natural Resources. All bearings, distances and coordinates are based on Louisiana Coordinate System of 1927, (North or South Zone), where applicable.

NOTE: The above description of the Tract nominated for lease has been provided and corrected, where required, exclusively by the nomination party. Any mineral lease selected from this Tract and awarded by the Louisiana State Mineral Board shall be without warranty of any kind, either express, implied, or statutory, including, but not limited to, the implied warranties of merchantability and fitness for a particular purpose. Should the mineral lease awarded by the Louisiana State Mineral Board be subsequently modified, cancelled or abrogated due to the existence of conflicting leases, operating agreements, private claims or other future obligations or conditions which may affect all or any portion of the leased Tract, it shall not relieve the Lessee of the obligation to pay any bonus due thereon to the Louisiana State Mineral Board, nor shall the Louisiana State Mineral Board be obligated to refund any consideration paid by the Lessor prior to such modification, cancellation, or abrogation, including, but not limited to, bonuses, rentals and royalties.

NOTE: The State of Louisiana does hereby reserve, and this lease shall be subject to, the imprescriptible right of surface use in the nature of a servitude in favor of the Department of Natural Resources, including its Offices and Commissions, for the sole purpose of implementing, constructing, servicing and maintaining approved coastal zone management and/or restoration projects. Utilization of any and all rights derived under this lease by the mineral lessee, its agents, successors or assigns, shall not interfere with nor hinder the reasonable surface use by the Department of Natural Resources, its Offices or Commissions, as herein above reserved.

NOTE: The Department of Wildlife and Fisheries has designated certain areas in the coastal waters of the State of Louisiana as Oyster Seed Bed

Areas. The exact location of those Seed Bed Areas must be obtained from the Department of Wildlife and Fisheries and any work done under a mineral lease from the State of Louisiana may necessarily be conducted in conformity with the rules and regulations promulgated by the said Department of Wildlife and Fisheries for Oyster Seed Bed Areas.

Applicant: CYPRESS ENERGY CORPORATION

Bidder	Cash Payment	Price/Acre	Rental	Oil	Gas	Other

Legend
09020023
Active_Leases

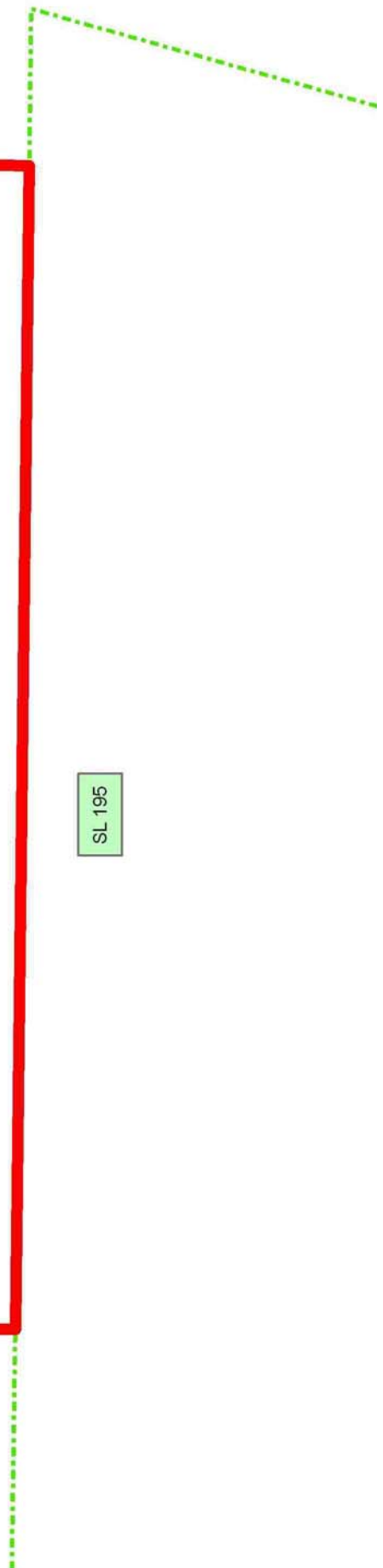
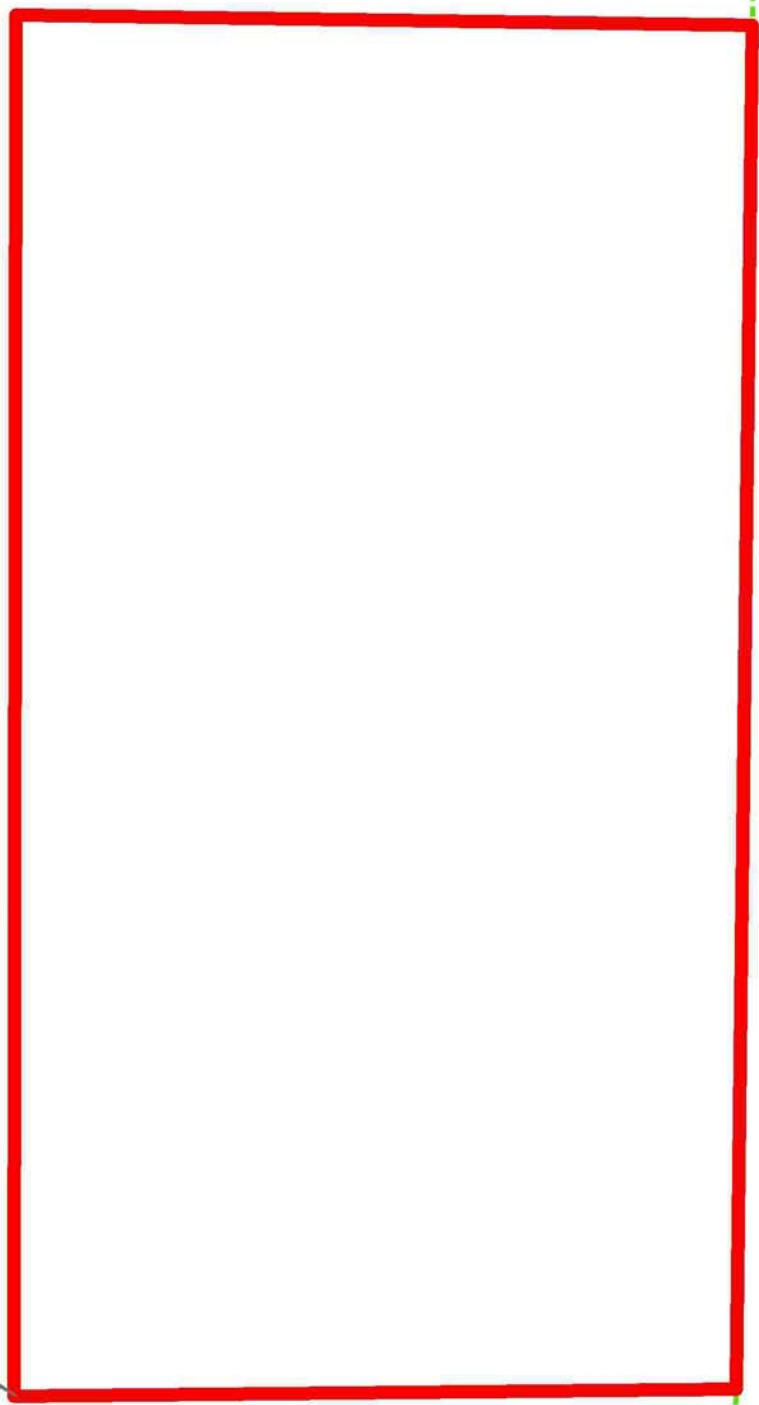


P.O.B.

GULF OF MEXICO

PLAQUEMINES PARISH

SL 195



TRACT 40815 - Portion of Blocks 33, and 34, Main Pass Area, Revised, Plaquemines Parish, Louisiana

All of the lands now or formerly constituting the beds and bottoms of all water bodies of every nature and description as to which title is vested in the State of Louisiana, together with all islands arising therein and other lands formed by accretion or by reliction, where allowed by law, excepting tax adjudicated lands, and not presently under mineral lease on February 11, 2009, situated in Plaquemines Parish, Louisiana, and more particularly described as follows: Beginning at a point having Coordinates of X = 2,594,865.31 and Y = 299,889.54; thence South 89 degrees 58 minutes 31 seconds East 10,984.69 feet to a point having Coordinates of X = 2,605,850.00 and Y = 299,884.78; thence South 2,604.78 feet to a point being the Northwest corner of State Lease No. 1958, as amended, having Coordinates of X = 2,605,850.00 and Y = 297,280.00; thence South 4,450.00 feet along the Western boundary of said State Lease No. 1958 to its Southwest corner also being the Northwest corner of State Lease No. 1961, as amended, having Coordinates of X = 2,605,850.00 and Y = 292,830.00; thence South 3,041.26 feet along the Western boundary of said State Lease No. 1961 to a point having Coordinates of X = 2,605,850.00 and Y = 289,788.74; thence Westerly approximately 9,861 feet to a point on the Eastern boundary of State Lease 195, as amended; thence along the boundary of State Lease No. 195 the following courses: Northeasterly approximately 2,492 feet and Westerly approximately 1,915 feet; thence Northerly approximately 7,679 feet to the Point of Beginning containing approximately **2,473 acres**, all as more particularly outlined on a plat on file in the Office of Mineral Resources, Department of Natural Resources. All bearings, distances and coordinates are based on Louisiana Coordinate System of 1927, (North or South Zone), where applicable.

NOTE: The above description of the Tract nominated for lease has been provided and corrected, where required, exclusively by the nomination party. Any mineral lease selected from this Tract and awarded by the Louisiana State Mineral Board shall be without warranty of any kind, either express, implied, or statutory, including, but not limited to, the implied warranties of merchantability and fitness for a particular purpose. Should the mineral lease awarded by the Louisiana State Mineral Board be subsequently modified, cancelled or abrogated due to the existence of conflicting leases, operating agreements, private claims or other future obligations or conditions which may affect all or any portion of the leased Tract, it shall not relieve the Lessee of the obligation to pay any bonus due thereon to the Louisiana State Mineral Board, nor shall the Louisiana State Mineral Board be obligated to refund any consideration paid by the Lessor prior to such modification, cancellation, or abrogation, including, but not limited to, bonuses, rentals and royalties.

NOTE: The State of Louisiana does hereby reserve, and this lease shall be subject to, the imprescriptible right of surface use in the nature of a servitude in favor of the Department of Natural Resources, including its Offices and Commissions, for the sole purpose of implementing,




constructing, servicing and maintaining approved coastal zone management and/or restoration projects. Utilization of any and all rights derived under this lease by the mineral lessee, its agents, successors or assigns, shall not interfere with nor hinder the reasonable surface use by the Department of Natural Resources, its Offices or Commissions, as herein above reserved.

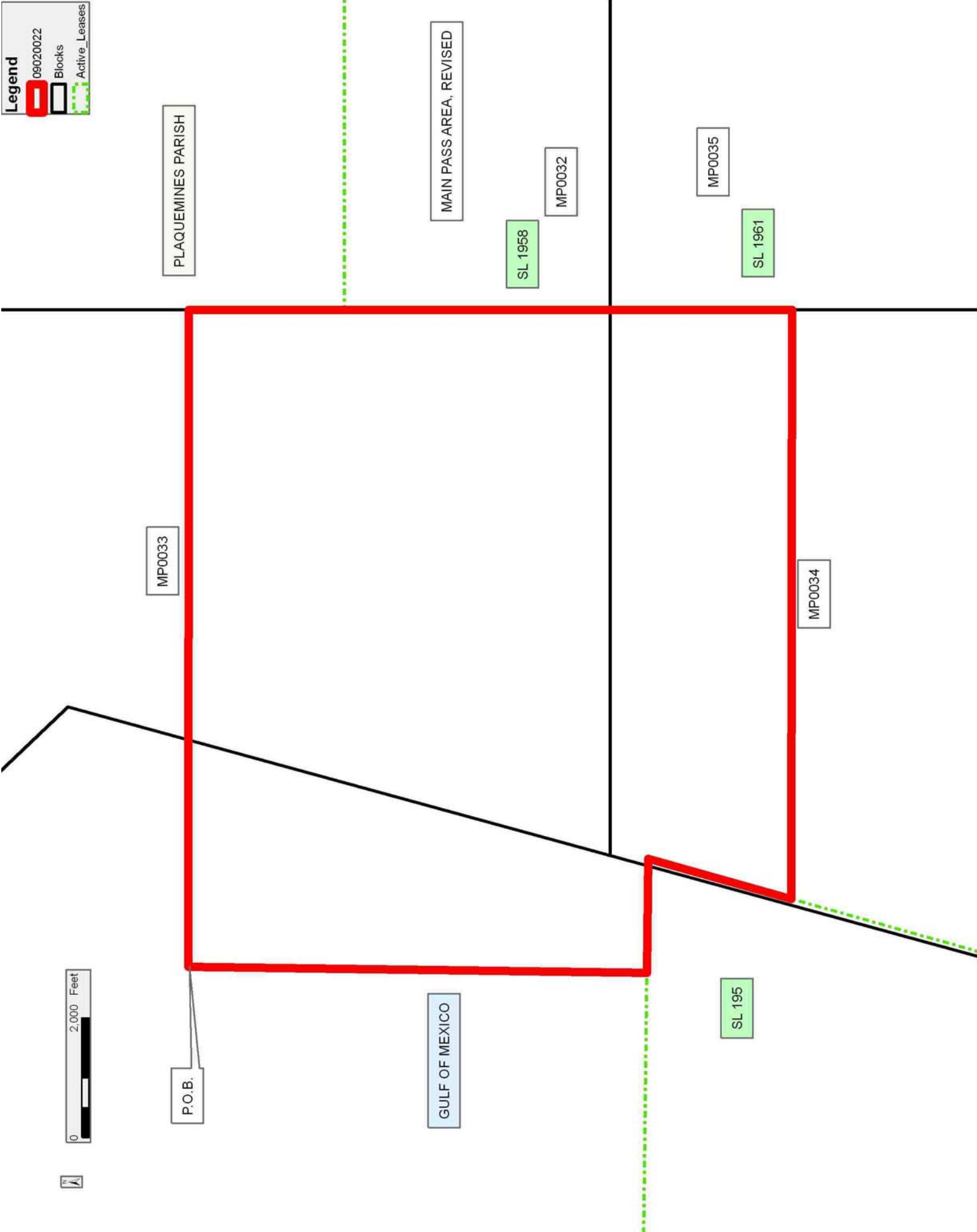
NOTE: The Department of Wildlife and Fisheries has designated certain areas in the coastal waters of the State of Louisiana as Oyster Seed Bed Areas. The exact location of those Seed Bed Areas must be obtained from the Department of Wildlife and Fisheries and any work done under a mineral lease from the State of Louisiana may necessarily be conducted in conformity with the rules and regulations promulgated by the said Department of Wildlife and Fisheries for Oyster Seed Bed Areas.

Applicant: CYPRESS ENERGY CORPORATION

Bidder	Cash Payment	Price/Acre	Rental	Oil	Gas	Other

Legend

-  09020022
-  Blocks
-  Active_Leases



TRACT 40816 - Plaquemines Parish, Louisiana

All of the lands now or formerly constituting the beds and bottoms of all water bodies of every nature and description as to which title is vested in the State of Louisiana, together with all islands arising therein and other lands formed by accretion or by reliction, where allowed by law, excepting tax adjudicated lands, and not presently under mineral lease on February 11, 2009, situated in Plaquemines Parish, Louisiana, and more particularly described as follows: Beginning at a point having Coordinates of X = 2,453,747.60 and Y = 291,949.81; thence East 6,666.14 feet to a point on the Western boundary of State Lease No. 8512 having Coordinates of X = 2,460,413.74 and Y = 291,949.81; thence along the boundary of said State Lease No. 8512 the following courses: South 26 degrees 02 minutes 18 West 17.13 feet to a point having Coordinates of X = 2,460,406.22 and Y = 291,934.42; South 62 degrees 58 minutes 06 seconds East 3,732.93 feet to a point having Coordinates of X = 2,463,731.26 and Y = 290,237.91; North 87 degrees 24 minutes 35 seconds East 392.30 feet to a point having Coordinates of X = 2,464,123.15 and Y = 290,255.64; South 85 degrees 16 minutes 00 seconds East 300.06 feet to a point having Coordinates of X = 2,464,422.19 and Y = 290,230.88; South 78 degrees 48 minutes 21 seconds East 240.61 feet to a point having Coordinates of X = 2,464,658.22 and Y = 290,184.17; South 75 degrees 57 minutes 47 seconds East 218.56 feet to a point having Coordinates of X = 2,464,870.26 and Y = 290,131.15; South 70 degrees 06 minutes 25 seconds East 293.54 feet to a point having Coordinates of X = 2,465,146.28 and Y = 290,031.27; South 57 degrees 55 minutes 59 seconds East 364.28 feet to a point having Coordinates of X = 2,465,454.98 and Y = 289,837.87; South 49 degrees 40 minutes 50 seconds East 256.67 feet to a point having Coordinates of X = 2,465,650.68 and Y = 289,671.79; South 44 degrees 36 minutes 36 seconds East 245.63 feet to a point on the North line of State Lease No. 9571 having Coordinates of X = 2,465,823.18 and Y = 289,496.93; thence along the boundary of said State Lease No. 9571 the following courses: West 123.18 feet to a point having Coordinates of X = 2,465,700.00 and Y = 289,496.93 and South 2,391.55 feet to its Southwest corner, said corner also being a point on the Northern boundary of State Lease No. 15248, having Coordinates of X = 2,465,700.00 and Y = 287,105.38; thence along the boundary of said State Lease No. 15248 the following courses: South 80 degrees 14 minutes 52 seconds West 903.72 feet to a point having Coordinates of X = 2,464,809.34 and Y = 286,952.30; North 89 degrees 28 minutes 26 seconds West 391.06 feet to a point having Coordinates of X = 2,464,418.30 and Y = 286,955.89; North 85 degrees 25 minutes 05 seconds West 177.95 feet to a point having Coordinates of X = 2,464,240.92 and Y = 286,970.11; North 87 degrees 09 minutes 51 seconds West 241.64 feet to a point having Coordinates of X = 2,463,999.57 and Y = 286,982.07; South 85 degrees 07 minutes 57 seconds West 101.99 feet to its Northwest corner, said corner also being the Northeast corner of State Lease No. 15246, having Coordinates of X = 2,463,879.95 and Y = 286,973.42; thence along the boundary of said State Lease No. 15246 the following courses: South 86 degrees 26 minutes 45 seconds West 129.15 feet to a point having Coordinates of X = 2,463,769.05 and Y = 286,965.40; South 84 degrees 19 minutes 37 seconds West 154.48

feet to a point having Coordinates of X = 2,463,615.32 and Y = 286,950.13; South 76 degrees 05 minutes 34 seconds West 243.48 feet to a point having Coordinates of X = 2,463,378.98 and Y = 286,891.61; South 71 degrees 29 minutes 57 seconds West 247.29 feet to a point having Coordinates of X = 2,463,144.47 and Y = 286,813.14; South 70 degrees 20 minutes 49 seconds West 285.74 feet to a point having Coordinates of X = 2,462,875.37 and Y = 286,717.04; South 81 degrees 59 minutes 31 seconds East 152.26 feet to a point having Coordinates of X = 2,463,026.15 and Y = 286,695.83; South 60 degrees 31 minutes 46 seconds East 146.54 feet to a point having Coordinates of X = 2,463,153.73 and Y = 286,623.74; South 50 degrees 29 minutes 03 seconds East 355.72 feet to a point having Coordinates of X = 2,463,428.15 and Y = 286,397.39; South 49 degrees 25 minutes 33 seconds East 456.56 feet to a point having Coordinates of X = 2,463,774.94 and Y = 286,100.43; South 129.10 feet to it Southeast corner, said corner also being a point the Western boundary of said State Lease No. 15248, having Coordinates of X = 2,463,904.04 and Y = 286,100.43; thence along the boundary of said State Lease No. 15248 the following courses: South 00 degrees 23 minutes 58 seconds East 101.44 feet to a point having Coordinates of X = 2,463,904.74 and Y = 285,999.00; South 59 degrees 17 minutes 16 seconds East 170.96 feet to a point having Coordinates of X = 2,464,051.71 and Y = 285,911.69; South 72 degrees 06 minutes 04 seconds East 304.92 feet to a point having Coordinates of X = 2,464,341.88 and Y = 285,817.97; South 84 degrees 02 minutes 21 seconds East 279.90 feet to a point having Coordinates of X = 2,464,620.26 and Y = 285,788.92; North 80 degrees 21 minutes 29 seconds East 300.06 feet to a point having Coordinates of X = 2,464,916.08 and Y = 285,839.17; North 74 degrees 52 minutes 03 seconds East 424.20 feet to a point having Coordinates of X = 2,465,325.58 and Y = 285,949.90; North 69 degrees 43 minutes 40 seconds East 49.66 feet to a point having Coordinates of X = 2,465,372.16 and Y = 285,967.11; thence South 267.45 feet to the Northwest corner of State Lease No. 17376, as amended, having Coordinates of X = 2,465,372.16 and Y = 285,699.65; thence South 3,755.10 feet along the West line of said State Lease No. 17376, as amended, to its Southwest corner, said corner also being a point on the Northern boundary of State Lease No. 19336, having Coordinates of X = 2,465,372.16 and Y = 281,944.55; thence along the boundary of said State Lease No. 19336 the following courses: West 1,008.29 feet to a point having Coordinates of X = 2,464,363.87 and Y = 281,944.55 and South 00 degrees 47 minutes 30 seconds East 2,878.20 feet to its Southwest corner, said corner also being a point on the North boundary of State Lease No. 18671, having Coordinates of X = 2,464,403.63 and Y = 279,066.62; thence North 86 degrees 02 minutes 56 seconds West 6,148.24 feet along the Northern boundary of said State Lease No. 18671 to its Northwest corner, said corner also being the Northeast corner of State Lease No. 18688, having Coordinates of X = 2,458,270.00 and Y = 279,490.26; thence along the boundary of said State Lease No. 18688 the following courses: North 86 degrees 02 minutes 56 seconds West 1,422.52 feet to a point having Coordinates of X = 2,456,850.86 and Y = 279,588.28 and North 69 degrees 38 minutes 02 seconds West 3,221.23 feet to its Northwest corner, said corner also being a point on the East line of State

Lease No. 18688, having Coordinates of X = 2,453,830.99 and Y = 280,709.32; thence North 01 degrees 10 minutes 50 seconds West 76.69 feet along the East line of said State Lease No. 18688 to a point having Coordinates of X = 2,453,829.41 and Y = 280,785.99; thence North 01 degrees 50 minutes 28 seconds West 2,546.53 feet along the East line of said State Lease No. 18688 to its Northeast corner having Coordinates of X = 2,453,747.60 and Y = 283,331.21; thence North 8,618.60 feet to the Point of Beginning, **LESS AND EXCEPT** all that portion of State Lease No. 19973 which lies entirely within the above described tract, being more fully described as follows: Commencing at a point being the point of beginning of the above described nominated tract having coordinates of X = 2,453,747.60 and Y = 291,949.81; thence South 47 degrees 06 minutes 18 seconds East 4,458.64 feet to a point being the point of beginning of said State Lease No. 19973 having Coordinates of X = 2,457,014.00 and Y = 288,915.00; thence East 3,216.00 feet to a point having Coordinates of X = 2,460,230.00 and Y = 288,915.00; thence South 6,753.00 feet to a point having Coordinates of X = 2,460,230.00 and Y = 282,162.00; thence West 3,216.00 feet to a point having Coordinates of X = 2,457,014.00 and Y = 282,162.00; thence North 6,753.00 feet to the point of beginning, the nominated tract containing approximately **1,941 acres**, all as more particularly outlined on a plat on file in the Office of Mineral Resources, Department of Natural Resources. All bearings, distances and coordinates are based on Louisiana Coordinate System of 1927, (North or South Zone), where applicable.

NOTE: The above description of the Tract nominated for lease has been provided and corrected, where required, exclusively by the nomination party. Any mineral lease selected from this Tract and awarded by the Louisiana State Mineral Board shall be without warranty of any kind, either express, implied, or statutory, including, but not limited to, the implied warranties of merchantability and fitness for a particular purpose. Should the mineral lease awarded by the Louisiana State Mineral Board be subsequently modified, cancelled or abrogated due to the existence of conflicting leases, operating agreements, private claims or other future obligations or conditions which may affect all or any portion of the leased Tract, it shall not relieve the Lessee of the obligation to pay any bonus due thereon to the Louisiana State Mineral Board, nor shall the Louisiana State Mineral Board be obligated to refund any consideration paid by the Lessor prior to such modification, cancellation, or abrogation, including, but not limited to, bonuses, rentals and royalties.

NOTE: The Office of Mineral Resources will require a minimum bonus of \$300 per acre and a minimum royalty of 23%.

NOTE: The State of Louisiana does hereby reserve, and this lease shall be subject to, the imprescriptible right of surface use in the nature of a servitude in favor of the Department of Natural Resources, including its Offices and Commissions, for the sole purpose of implementing, constructing, servicing and maintaining approved coastal zone management

and/or restoration projects. Utilization of any and all rights derived under this lease by the mineral lessee, its agents, successors or assigns, shall not interfere with nor hinder the reasonable surface use by the Department of Natural Resources, its Offices or Commissions, as herein above reserved.

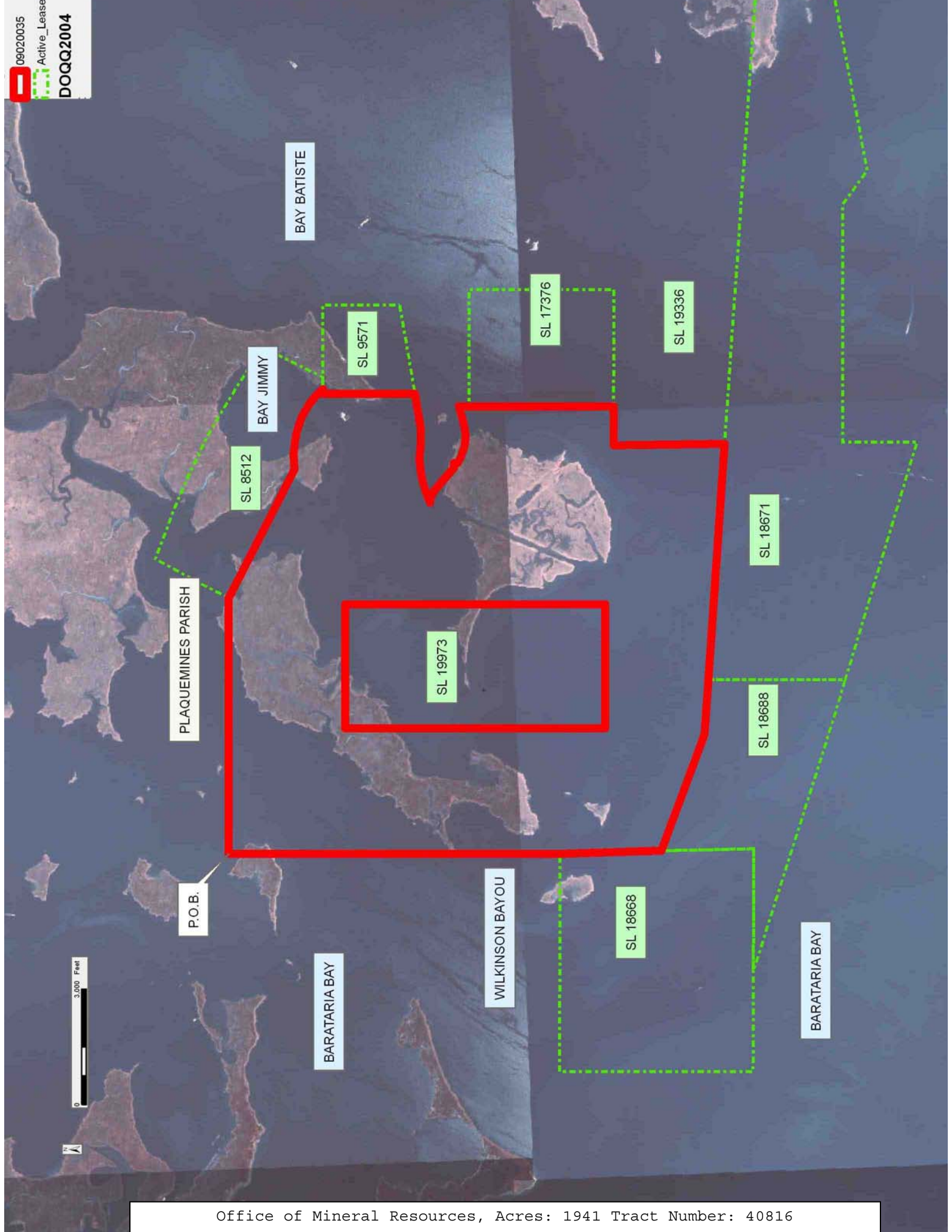
Applicant: STAFF OFFICE OF MINERAL RESOURCES

Bidder	Cash Payment	Price/Acre	Rental	Oil	Gas	Other

09020035

Active_Lease

DOQQ2004



PLAQUEMINES PARISH

BAY BATISTE

BAY JIMMY

P.O.B.

BARATARIA BAY

WILKINSON BAYOU

BARATARIA BAY



TRACT 40817 - Portion of Block 34, Main Pass Area, Revised, Plaquemines Parish, Louisiana

All of the lands now or formerly constituting the beds and bottoms of all water bodies of every nature and description as to which title is vested in the State of Louisiana, together with all islands arising therein and other lands formed by accretion or by reliction, where allowed by law, excepting tax adjudicated lands, and not presently under mineral lease on February 11, 2009, situated in Plaquemines Parish, Louisiana, and more particularly described as follows: Beginning at a point on the Western boundary of State Lease No. 1961, as amended, having Coordinates of X = 2,605,850.00 and Y = 289,788.74; thence South 4,342.94 feet along the Western boundary of said State Lease No. 1961 to its Southwest corner having Coordinates of X = 2,605,850.00 and Y = 285,445.80; thence South 7,365.80 feet to a point having Coordinates of X = 2,605,850.00 and Y = 278,080.00; thence West 3,257.75 feet to the Northeast corner of State Lease No. 6240, as amended, having Coordinates of X = 2,602,592.22 and Y = 278,080.00; thence West 2,390.37 feet along the Northern boundary of said State Lease No. 6240 to the Southeast corner of State Lease 1349, as amended, having Coordinates of X = 2,600,201.85 and Y = 278,080.00; thence along the boundary of said State Lease No. 1349 the following courses: North 3,826.00 feet to a point having Coordinates of X = 2,600,201.86 and Y = 281,906.00, and West 163.70 feet to the Easternmost Southeast corner of State Lease No. 15941, as amended, having Coordinates of X = 2,600,038.16 and Y = 281,906.00; thence along the boundary of said State Lease No. 15941 the following courses: Northwesterly along an arc to the left having a radius of 800.00 feet and a chord bearing of North 49 degrees 10 minutes 40 seconds West 412.40 feet to a point having Coordinates of X = 2,599,726.08 and Y = 282,175.59; Northwesterly along an arc to the right having a radius of 3,100.00 feet and a chord bearing of North 65 degrees 06 minutes 51 seconds West 108.35 feet to a point having Coordinates of X = 2,599,627.78 and Y = 282,221.19; Northwesterly along an arc to the right having a radius of 470.00 feet and a chord bearing of North 47 degrees 21 minutes 28 seconds West 101.93 feet to a point having Coordinates of X = 2,599,552.80 and Y = 282,290.24; Northwesterly along an arc to the left having a radius of 1,212.00 feet and a chord bearing of North 44 degrees 47 minutes 15 seconds West 154.47 feet to a point having Coordinates of X = 2,599,443.98 and Y = 282,399.87; North 82 degrees 01 minutes 22 seconds East 646.43 feet to a point having Coordinates of X = 2,600,084.15 and Y = 282,489.58; Northwesterly along an arc to the left having a radius of 3,930.00 feet and a chord bearing of North 48 degrees 21 minutes 29 seconds West 225.74 feet to a point having coordinates of X = 2,599,915.45 and Y = 282,639.58; Northeasterly along an arc to the right having a radius of 2,650.00 feet and a chord bearing of North 71 degrees 31 minutes 33 seconds East 41.56 feet to a point having Coordinates of X = 2,599,954.87 and Y = 282,652.75; Northwesterly along an arc to the left having a radius of 3,430.00 feet and a chord bearing of North 58 degrees 30 minutes 57 seconds West 1,750.98 feet to a point having Coordinates of X = 2,598,461.66 and Y = 283,567.22; Northwesterly along an arc to the left having a radius of 1,450.00 feet and a chord bearing of North 78

degrees 51 minutes 29 seconds West 280.74 feet to a point intersecting the Eastern boundary of said State Lease No. 1349 having coordinates of X = 2,598,186.21 and Y = 283,621.47; thence along the boundary of said State Lease No. 1349 the following courses: North 13 degrees 43 minutes 34 seconds West 133.57 feet to a point having Coordinates of 2,598,154.52 and Y = 283,751.22; North 36 degrees 10 minutes 02 seconds West 737.99 feet to a point having Coordinates of 2,597,719.00 and Y = 284,347.00; North 57 degrees 56 minutes 48 seconds West 1,903.12 feet to a point having Coordinates of 2,596,106.00 and Y = 285,357.00 and Westerly approximately 1,359 feet to a point of intersection with State Lease No. 195, as amended; thence Northeasterly approximately 4,622 feet along said State Lease No. 195 to a point intersection with a line having a bearing of North 89 degrees 56 minutes 12 seconds West and commencing at a point having Coordinates of X = 2,605,850.00 and Y = 289,788.74; thence South 89 degrees 56 minutes 12 seconds East approximately 9,861 feet along said line to the point of beginning, containing approximately **2,151 acres**, all as more particularly outlined on a plat on file in the Office of Mineral Resources, Department of Natural Resources. All bearings, distances and coordinates are based on Louisiana Coordinate System of 1927, (North or South Zone), where applicable.

NOTE: The above description of the Tract nominated for lease has been provided and corrected, where required, exclusively by the nomination party. Any mineral lease selected from this Tract and awarded by the Louisiana State Mineral Board shall be without warranty of any kind, either express, implied, or statutory, including, but not limited to, the implied warranties of merchantability and fitness for a particular purpose. Should the mineral lease awarded by the Louisiana State Mineral Board be subsequently modified, cancelled or abrogated due to the existence of conflicting leases, operating agreements, private claims or other future obligations or conditions which may affect all or any portion of the leased Tract, it shall not relieve the Lessee of the obligation to pay any bonus due thereon to the Louisiana State Mineral Board, nor shall the Louisiana State Mineral Board be obligated to refund any consideration paid by the Lessor prior to such modification, cancellation, or abrogation, including, but not limited to, bonuses, rentals and royalties.




NOTE: The State of Louisiana does hereby reserve, and this lease shall be subject to, the imprescriptible right of surface use in the nature of a servitude in favor of the Department of Natural Resources, including its Offices and Commissions, for the sole purpose of implementing, constructing, servicing and maintaining approved coastal zone management and/or restoration projects. Utilization of any and all rights derived under this lease by the mineral lessee, its agents, successors or assigns, shall not interfere with nor hinder the reasonable surface use by the Department of Natural Resources, its Offices or Commissions, as herein above reserved.

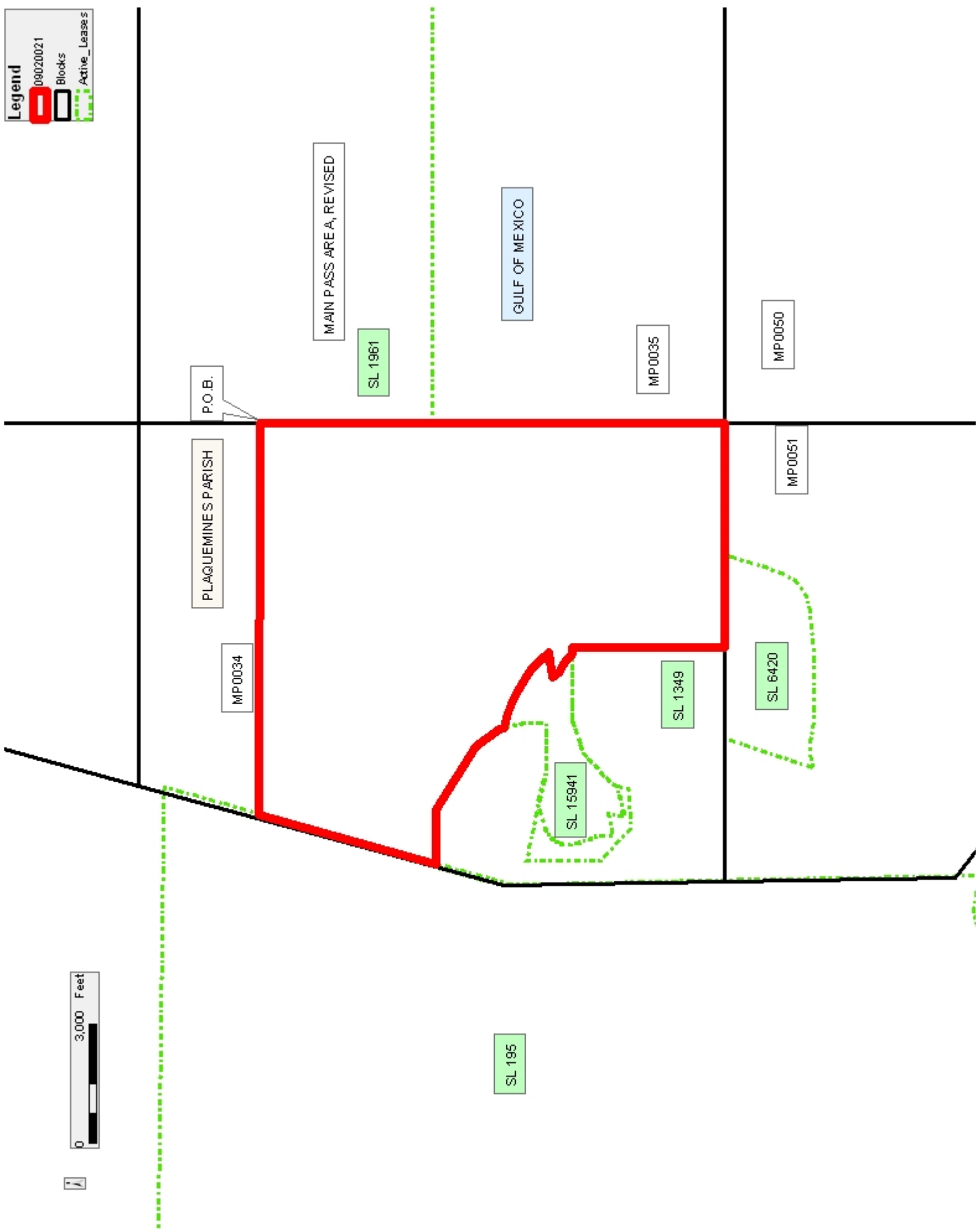
NOTE: The Department of Wildlife and Fisheries has designated certain areas in the coastal waters of the State of Louisiana as Oyster Seed Bed Areas. The exact location of those Seed Bed Areas must be obtained from the Department of Wildlife and Fisheries and any work done under a mineral lease from the State of Louisiana may necessarily be conducted in conformity with the rules and regulations promulgated by the said Department of Wildlife and Fisheries for Oyster Seed Bed Areas.

Applicant: CYPRESS ENERGY CORPORATION

Bidder	Cash Payment	Price/Acre	Rental	Oil	Gas	Other

Legend

-  09020021
-  Blocks
-  Active_Leases



TRACT 40818 - Portion of Block 34, Main Pass Area, Revised, Plaquemines Parish, Louisiana

All of the lands now or formerly constituting the beds and bottoms of all water bodies of every nature and description as to which title is vested in the State of Louisiana, together with all islands arising therein and other lands formed by accretion or by reliction, where allowed by law, excepting tax adjudicated lands, and not presently under mineral lease on February 11, 2009, situated in Plaquemines Parish, Louisiana, and more particularly described as follows: Beginning at a point having Coordinates of X = 2,594,846.00 and Y = 283,074.00; thence South 78 degrees 30 minutes 22 seconds East 1,099.04 feet to a point having Coordinates of X = 2,595,923.00 and Y = 282,855.00; thence South 75 degrees 57 minutes 09 seconds East 317.52 feet to a point having Coordinates X = 2,596,231.02 and Y = 282,777.93; thence South 72 degrees 05 minutes 01 seconds West 606.91 feet to a point having Coordinates X = 2,595,653.54 and Y = 282,591.23; thence Southwesterly along an arc having a radius of 620.00 feet and a chord bearing of South 43 degrees 11 minutes 40 seconds West 599.07 feet to a point having Coordinates X = 2,595,243.50 and Y = 282,154.49; thence South 02 degrees 56 minutes 56 seconds East 162.00 feet to a point having Coordinates of X = 2,595,251.83 and Y = 281,992.70; thence Southeasterly along an arc having a radius of 2,700.00 feet and a chord bearing of South 01 degrees 21 minutes 04 seconds East 395.78 feet to a point having Coordinates of X = 2,595,478.26 and Y = 280,886.76; thence Northeasterly along an arc having a radius of 5,290.00 feet and a chord bearing of North 78 degrees 02 minutes 00 seconds East 552.70 feet to a point having Coordinates of X = 2,596,018.94 and Y = 281,001.36; thence Southwesterly along an arc having a radius of 3,316.00 feet and a chord bearing of South 12 degrees 53 minutes 46 seconds West 347.46 feet to a point having Coordinates of X = 2,595,941.39 and Y = 280,662.66; thence Northeasterly along an arc having a radius of 4,170.00 feet and a chord bearing of North 81 degrees 09 minutes 37 seconds East 120.56 feet to a point having Coordinates of X = 2,596,060.52 and Y = 280,681.19; thence Southwesterly along an arc having a radius of 4,650.00 feet and a chord bearing of South 20 degrees 33 minutes 20 seconds West 91.50 feet to a point having Coordinates of X = 2,596,028.40 and Y = 280,595.52; thence Northeasterly along an arc having a radius of 16,380.00 feet and a chord bearing of North 73 degrees 23 minutes 18 seconds East 749.70 feet to a point having Coordinates of X = 2,596,746.81 and Y = 280,809.84; thence South 17 degrees 00 minutes 34 seconds West 310.42 feet to a point having Coordinates of X = 2,596,656.00 and Y = 280,513.00; thence South 85 degrees 46 minutes 35 seconds West 1,008.72 feet to a point having Coordinates of X = 2,595,650.00 and Y = 280,439.00; thence North 46 degrees 36 minutes 49 seconds West 1,104.94 feet to a point having Coordinates of X = 2,594,847.00 and Y = 281,198.00; thence North 00 degrees 01 minute 50 seconds west to the point of beginning containing approximately **38.46 acres**, all as more particularly outlined on a plat on file in the Office of Mineral Resources, Department of Natural Resources. All bearings, distances and coordinates are based on Louisiana Coordinate System of 1927, (North or South Zone), where applicable.

NOTE: The above description of the Tract nominated for lease has been provided and corrected, where required, exclusively by the nomination party. Any mineral lease selected from this Tract and awarded by the Louisiana State Mineral Board shall be without warranty of any kind, either express, implied, or statutory, including, but not limited to, the implied warranties of merchantability and fitness for a particular purpose. Should the mineral lease awarded by the Louisiana State Mineral Board be subsequently modified, cancelled or abrogated due to the existence of conflicting leases, operating agreements, private claims or other future obligations or conditions which may affect all or any portion of the leased Tract, it shall not relieve the Lessee of the obligation to pay any bonus due thereon to the Louisiana State Mineral Board, nor shall the Louisiana State Mineral Board be obligated to refund any consideration paid by the Lessor prior to such modification, cancellation, or abrogation, including, but not limited to, bonuses, rentals and royalties.




NOTE: The State of Louisiana does hereby reserve, and this lease shall be subject to, the imprescriptible right of surface use in the nature of a servitude in favor of the Department of Natural Resources, including its Offices and Commissions, for the sole purpose of implementing, constructing, servicing and maintaining approved coastal zone management and/or restoration projects. Utilization of any and all rights derived under this lease by the mineral lessee, its agents, successors or assigns, shall not interfere with nor hinder the reasonable surface use by the Department of Natural Resources, its Offices or Commissions, as herein above reserved.

NOTE: The Department of Wildlife and Fisheries has designated certain areas in the coastal waters of the State of Louisiana as Oyster Seed Bed Areas. The exact location of those Seed Bed Areas must be obtained from the Department of Wildlife and Fisheries and any work done under a mineral lease from the State of Louisiana may necessarily be conducted in conformity with the rules and regulations promulgated by the said Department of Wildlife and Fisheries for Oyster Seed Bed Areas.

Applicant: CYPRESS ENERGY CORPORATION

Bidder	Cash Payment	Price/Acre	Rental	Oil	Gas	Other

Legend

-  09020019
-  Blocks
-  Active_Leases

