

TRACT 39611 - St. Mary Parish, Louisiana

All of the lands now or formerly constituting the beds and bottoms of all water bodies of every nature and description as to which title is vested in the State of Louisiana, together with all islands arising therein and other lands formed by accretion or by reliction, where allowed by law, excepting tax adjudicated lands, and not presently under mineral lease on February 13, 2008, situated in St. Mary Parish, Louisiana, and more particularly described as follows: Beginning at a point having Coordinates of X = 1,992,456.82 and Y = 361,358.67; thence South 00 degrees 19 minutes 41 seconds East 15,774.22 feet to a point having Coordinates of X = 1,992,547.14 and Y = 345,584.71; thence South 89 degrees 40 minutes 47 seconds West 10,916.03 feet to a point having Coordinates of X = 1,981,631.28 and Y = 345,523.67; thence North 00 degrees 16 minutes 31 seconds East 15,788.83 feet to a point having Coordinates of X = 1,981,707.11 and Y = 361,312.32; thence North 89 degrees 45 minutes 11 seconds East 10,749.81 feet to the point of beginning, **LESS AND EXCEPT** any right, title, and interest in lands owned by and not under lease from the State of Louisiana, on behalf of the St. Mary Parish School Board, situated in Section 16, Township 16 South, Range 11 East, St. Mary Parish, Louisiana, contained within the above described tract, containing approximately **290 acres**, all as more particularly outlined on a plat on file in the Office of Mineral Resources, Department of Natural Resources. All bearings, distances and coordinates are based on Louisiana Coordinate System of 1927, (North or South Zone), where applicable.

NOTE: The above description of the Tract nominated for lease has been provided and corrected, where required, exclusively by the nomination party. Any mineral lease selected from this Tract and awarded by the Louisiana State Mineral Board shall be without warranty of any kind, either express, implied, or statutory, including, but not limited to, the implied warranties of merchantability and fitness for a particular purpose. Should the mineral lease awarded by the Louisiana State Mineral Board be subsequently modified, cancelled or abrogated due to the existence of conflicting leases, operating agreements, private claims or other future obligations or conditions which may affect all or any portion of the leased Tract, it shall not relieve the Lessee of the obligation to pay any bonus due thereon to the Louisiana State Mineral Board, nor shall the Louisiana State Mineral Board be obligated to refund any consideration paid by the Lessor prior to such modification, cancellation, or abrogation, including, but not limited to, bonuses, rentals and royalties.

NOTE: The State of Louisiana does hereby reserve, and this lease shall be subject to, the imprescriptible right of surface use in the nature of a servitude in favor of the Department of Natural Resources, including its Offices and Commissions, for the sole purpose of implementing, constructing, servicing and maintaining approved coastal zone management and/or restoration projects. Utilization of any and all rights derived under this lease by the mineral lessee, its agents, successors or assigns, shall not interfere with nor hinder the reasonable surface use by the

Department of Natural Resources, its Offices or Commissions, as herein above reserved.

Applicant: FLEETWOOD RESOURCES, INC.

Bidder	Cash Payment	Price/Acre	Rental	Oil	Gas	Other

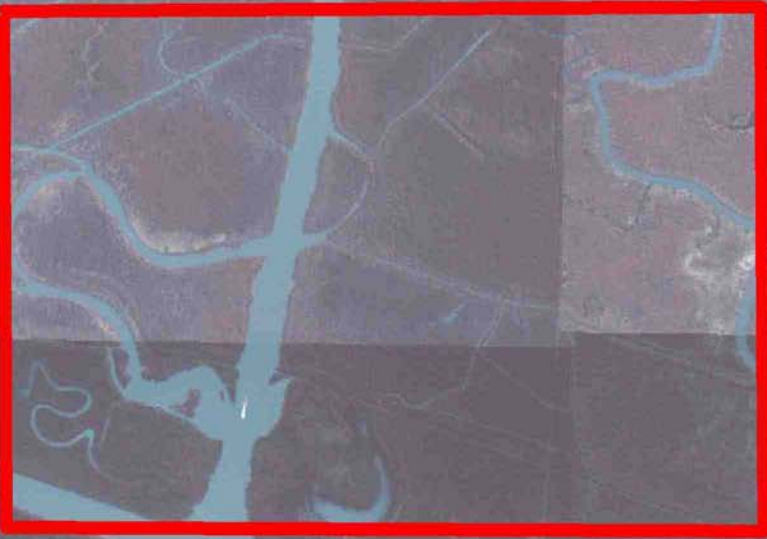


P.O.B.

ST MARY PARISH

T16S - R11E

WAX LAKE OUTLET



BIG BULL BAYOU

T16S - R10E

INTRACOASTAL WATERWAY

TRACT 39612 - St. Mary Parish, Louisiana

All of the lands now or formerly constituting the beds and bottoms of all water bodies of every nature and description as to which title is vested in the State of Louisiana, together with all islands arising therein and other lands formed by accretion or by reliction, where allowed by law, excepting tax adjudicated lands, and not presently under mineral lease on February 13, 2008, situated in St. Mary Parish, Louisiana, and more particularly described as follows: Beginning at a point having Coordinates of X = 2,044,178.93 and Y = 347,836.33; thence North 32 degrees 15 minutes 05 seconds West approximately 1,175 feet to a point on the Easternmost boundary of State Lease No. 341, as amended; thence along the boundary of said State Lease No. 341 the following courses: Easterly approximately 87 feet; Northerly approximately 1,848 feet and Northwesterly approximately 342 feet to a point of intersection with a line having a bearing of South 05 degrees 24 minutes 04 seconds West and commencing at a point having Coordinates of X = 2,043,396.37 and Y = 351,125.88; thence North 05 degrees 24 minutes 04 seconds East approximately 280 feet along said line to a point having Coordinates of X = 2,043,396.37 and Y = 351,125.88; thence East 5,414.55 feet to a point having Coordinates of X = 2,048,810.92 and Y = 351,125.88; thence South 00 degrees 52 minutes 33 seconds East 1,965.65 feet to the Northwest corner of State Lease No. 19330 having Coordinates of X = 2,048,840.97 and Y = 349,160.46; thence South 00 degrees 52 minutes 33 seconds East 1,324.28 feet along the West boundary of said State Lease No. 19330 to a point having Coordinates of X = 2,048,861.21 and Y = 347,836.33; thence West 4,682.28 feet to the point of beginning, **LESS AND EXCEPT** that portion, if any, of said State Lease No. 341, as amended, which may lie within the above described tract, containing approximately **73 acres**, all as more particularly outlined on a plat on file in the Office of Mineral Resources, Department of Natural Resources. All bearings, distances and coordinates are based on Louisiana Coordinate System of 1927, (North or South Zone), where applicable.

NOTE: The above description of the Tract nominated for lease has been provided and corrected, where required, exclusively by the nomination party. Any mineral lease selected from this Tract and awarded by the Louisiana State Mineral Board shall be without warranty of any kind, either express, implied, or statutory, including, but not limited to, the implied warranties of merchantability and fitness for a particular purpose. Should the mineral lease awarded by the Louisiana State Mineral Board be subsequently modified, cancelled or abrogated due to the existence of conflicting leases, operating agreements, private claims or other future obligations or conditions which may affect all or any portion of the leased Tract, it shall not relieve the Lessee of the obligation to pay any bonus due thereon to the Louisiana State Mineral Board, nor shall the Louisiana State Mineral Board be obligated to refund any consideration paid by the Lessor prior to such modification, cancellation, or abrogation, including, but not limited to, bonuses, rentals and royalties.

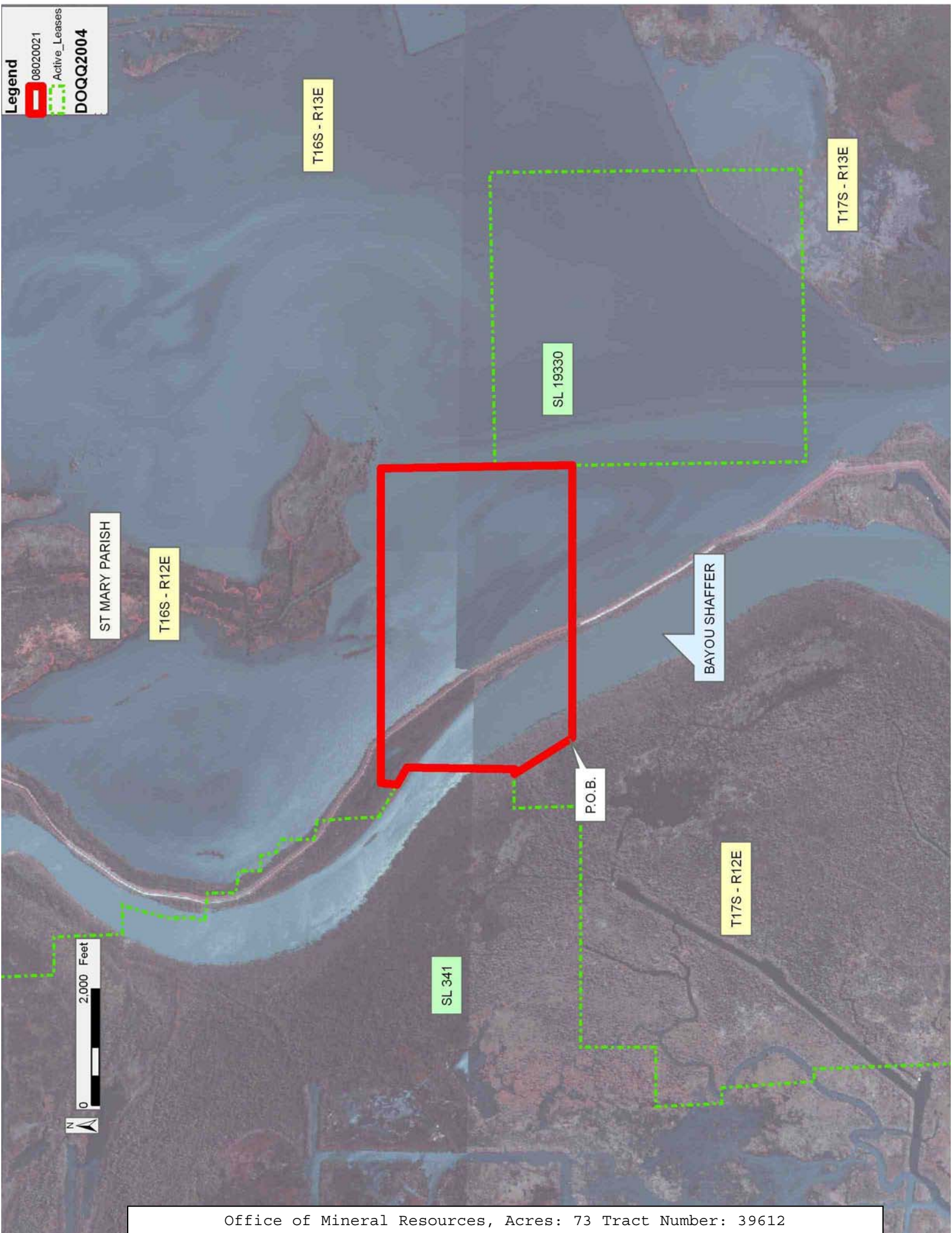
NOTE: The acreage contained herein, being a portion of State Lease 335, 340 or 341, was subject to the litigation between Texas, Inc. and the State of Louisiana which resulted in the Global Settlement Agreement compromise whereby this acreage was reassigned through various mesne conveyances to the successors of William T. Burton, the original lessee of said leases from the State, (hereinafter otherwise referred to as the "ORRO's) and approved by the State Mineral Board, becoming effective April 25, 1994. Under separate agreement by and between the State and the ORRO's, certain obligations were to be met within a specified time frame or the ORRO's became obligated to release the reassigned acreage back to the State. The obligations were not met within the specified time frame and the State began securing the releases for the acreage contained herein. Due to the extremely large number of ORRO's, their nationwide and worldwide dispersal, the unreliability of available contact information and/or a present inability to obtain full, requisite cooperation, the State has, as yet, not secured releases from certain ORRO's representing approximately a .0258336 interest in this acreage. Accordingly, although the State is diligently pursuing the requisite releases affecting this acreage (the furnishing of which the ORRO's representing the stated decimal interest are obligated), nevertheless, a party obtaining a mineral lease from the State of Louisiana on the acreage contained herein shall do so with full knowledge that a complete release of all specific ORRO interest in this acreage has not as yet been secured and shall assume a business risk commensurate with the unsecured interest release.

NOTE: The State of Louisiana does hereby reserve, and this lease shall be subject to, the imprescriptible right of surface use in the nature of a servitude in favor of the Department of Natural Resources, including its Offices and Commissions, for the sole purpose of implementing, constructing, servicing and maintaining approved coastal zone management and/or restoration projects. Utilization of any and all rights derived under this lease by the mineral lessee, its agents, successors or assigns, shall not interfere with nor hinder the reasonable surface use by the Department of Natural Resources, its Offices or Commissions, as herein above reserved.

Applicant: LAND MANAGEMENT SERVICES, L.L.C.

Bidder	Cash Payment	Price/Acre	Rental	Oil	Gas	Other

Legend
08020021
Active_Leases
DOQQ2004



TRACT 39613 - St. Mary Parish, Louisiana

All of the lands now or formerly constituting the beds and bottoms of all water bodies of every nature and description as to which title is vested in the State of Louisiana, together with all islands arising therein and other lands formed by accretion or by reliction, where allowed by law, excepting tax adjudicated lands, and not presently under mineral lease on February 13, 2008, situated in St. Mary Parish, Louisiana, and more particularly described as follows: Beginning at a point having Coordinates of X = 2,044,178.93 and Y = 347,836.33; thence East 4,682.28 feet to a point on the West boundary of State Lease No. 19330 having Coordinates of X = 2,048,861.21 and Y = 347,836.33; thence South 00 degrees 52 minutes 33 seconds East 4,026.58 feet along the West boundary of said State Lease No. 19330 to its Southwest corner, also being the Northwest corner of State Lease No. 19331 having Coordinates of X = 2,048,922.76 and Y = 343,810.22; thence West 3,765.64 feet to a point having Coordinates of X = 2,045,157.12 and Y = 343,810.22; thence North 2,475.87 feet to a point having Coordinates of X = 2,045,157.12 and Y = 346,286.09; thence North 32 degrees 15 minutes 06 seconds West 1,833.06 feet to the point of beginning, **LESS AND EXCEPT** that portion, if any, of said State Lease No. 19330 and State Lease No. 19331 which may lie within the above described tract, containing approximately **107 acres**, all as more particularly outlined on a plat on file in the Office of Mineral Resources, Department of Natural Resources. All bearings, distances and coordinates are based on Louisiana Coordinate System of 1927, (North or South Zone), where applicable.

NOTE: The above description of the Tract nominated for lease has been provided and corrected, where required, exclusively by the nomination party. Any mineral lease selected from this Tract and awarded by the Louisiana State Mineral Board shall be without warranty of any kind, either express, implied, or statutory, including, but not limited to, the implied warranties of merchantability and fitness for a particular purpose. Should the mineral lease awarded by the Louisiana State Mineral Board be subsequently modified, cancelled or abrogated due to the existence of conflicting leases, operating agreements, private claims or other future obligations or conditions which may affect all or any portion of the leased Tract, it shall not relieve the Lessee of the obligation to pay any bonus due thereon to the Louisiana State Mineral Board, nor shall the Louisiana State Mineral Board be obligated to refund any consideration paid by the Lessor prior to such modification, cancellation, or abrogation, including, but not limited to, bonuses, rentals and royalties.

NOTE: The acreage contained herein, being a portion of State Lease 335, 340 or 341, was subject to the litigation between Texas, Inc. and the State of Louisiana which resulted in the Global Settlement Agreement compromise whereby this acreage was reassigned through various mesne conveyances to the successors of William T. Burton, the original lessee of said leases from the State, (hereinafter otherwise referred to as the "ORRO's) and approved by the State Mineral Board, becoming effective April

25, 1994. Under separate agreement by and between the State and the ORRO's, certain obligations were to be met within a specified time frame or the ORRO's became obligated to release the reassigned acreage back to the State. The obligations were not met within the specified time frame and the State began securing the releases for the acreage contained herein. Due to the extremely large number of ORRO's, their nationwide and worldwide dispersal, the unreliability of available contact information and/or a present inability to obtain full, requisite cooperation, the State has, as yet, not secured releases from certain ORRO's representing approximately a .0258336 interest in this acreage. Accordingly, although the State is diligently pursuing the requisite releases affecting this acreage (the furnishing of which the ORRO's representing the stated decimal interest are obligated), nevertheless, a party obtaining a mineral lease from the State of Louisiana on the acreage contained herein shall do so with full knowledge that a complete release of all specific ORRO interest in this acreage has not as yet been secured and shall assume a business risk commensurate with the unsecured interest release.

NOTE: The State of Louisiana does hereby reserve, and this lease shall be subject to, the imprescriptible right of surface use in the nature of a servitude in favor of the Department of Natural Resources, including its Offices and Commissions, for the sole purpose of implementing, constructing, servicing and maintaining approved coastal zone management and/or restoration projects. Utilization of any and all rights derived under this lease by the mineral lessee, its agents, successors or assigns, shall not interfere with nor hinder the reasonable surface use by the Department of Natural Resources, its Offices or Commissions, as herein above reserved.

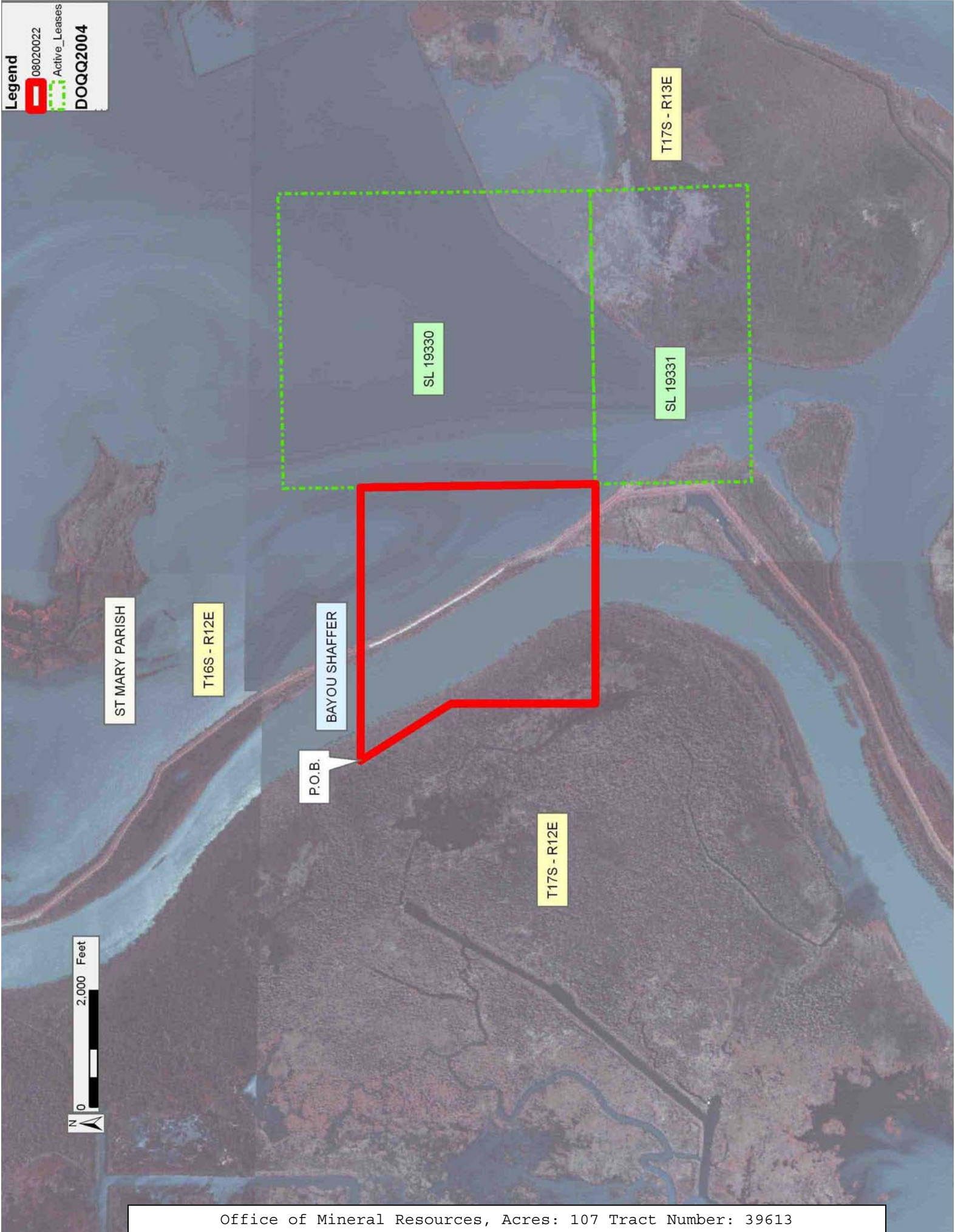
Applicant: LAND MANAGEMENT SERVICES, L.L.C

Bidder	Cash Payment	Price/Acre	Rental	Oil	Gas	Other

Legend

-  08020022
-  Active_Leases

DOQQ2004



TRACT 39614 - St. Mary Parish, Louisiana

All of the lands now or formerly constituting the beds and bottoms of all water bodies of every nature and description as to which title is vested in the State of Louisiana, together with all islands arising therein and other lands formed by accretion or by reliction, where allowed by law, excepting tax adjudicated lands, and not presently under mineral lease on February 13, 2008, situated in St. Mary Parish, Louisiana, and more particularly described as follows: Beginning at a point having Coordinates of X = 1,987,112.43 and Y = 345,554.32; thence North 89 degrees 40 minutes 47 seconds East 5,434.79 feet to a point having Coordinates of X = 1,992,547.14 and Y = 345,584.71; thence North 89 degrees 57 minutes 26 seconds East 10,960.91 feet to a point having Coordinates of X = 2,003,508.05 and Y = 345,592.90; thence South 00 degrees 11 minutes 10 seconds East 2,646.01 feet to a point having Coordinates of X = 2,003,516.65 and Y = 342,946.90; thence South 89 degrees 33 minutes 49 seconds West 16,412.41 feet to a point having Coordinates of X = 1,987,104.72 and Y = 342,821.90; thence North 00 degrees 09 minutes 42 seconds East 2,732.43 feet to the point of beginning, containing approximately **84 acres**, all as more particularly outlined on a plat on file in the Office of Mineral Resources, Department of Natural Resources. All bearings, distances and coordinates are based on Louisiana Coordinate System of 1927, (North or South Zone), where applicable.

NOTE: The above description of the Tract nominated for lease has been provided and corrected, where required, exclusively by the nomination party. Any mineral lease selected from this Tract and awarded by the Louisiana State Mineral Board shall be without warranty of any kind, either express, implied, or statutory, including, but not limited to, the implied warranties of merchantability and fitness for a particular purpose. Should the mineral lease awarded by the Louisiana State Mineral Board be subsequently modified, cancelled or abrogated due to the existence of conflicting leases, operating agreements, private claims or other future obligations or conditions which may affect all or any portion of the leased Tract, it shall not relieve the Lessee of the obligation to pay any bonus due thereon to the Louisiana State Mineral Board, nor shall the Louisiana State Mineral Board be obligated to refund any consideration paid by the Lessor prior to such modification, cancellation, or abrogation, including, but not limited to, bonuses, rentals and royalties.

NOTE: The State of Louisiana does hereby reserve, and this lease shall be subject to, the imprescriptible right of surface use in the nature of a servitude in favor of the Department of Natural Resources, including its Offices and Commissions, for the sole purpose of implementing, constructing, servicing and maintaining approved coastal zone management and/or restoration projects. Utilization of any and all rights derived under this lease by the mineral lessee, its agents, successors or assigns, shall not interfere with nor hinder the reasonable surface use by the Department of Natural Resources, its Offices or Commissions, as herein above reserved.

Applicant: FLEETWOOD RESOURCES, INC.

Bidder	Cash Payment	Price/Acre	Rental	Oil	Gas	Other



ST MARY PARISH

T16S - R11E

BIG BULL BAYOU

P.O.B.



LITTLE WAX BAYOU

T17S - R11E

TRACT 39615 - St. Mary Parish, Louisiana

All of the lands now or formerly constituting the beds and bottoms of all water bodies of every nature and description as to which title is vested in the State of Louisiana, together with all islands arising therein and other lands formed by accretion or by reliction, where allowed by law, excepting tax adjudicated lands, and not presently under mineral lease on February 13, 2008, situated in St. Mary Parish, Louisiana, and more particularly described as follows: Beginning at the Northernmost Northeast corner of State Lease No. 19367, also being the Southeast corner of State Lease No. 19363 having Coordinates of X = 1,968,278.22 and Y = 340,112.64; thence North 00 degrees 17 minutes 58 seconds East 5,187.43 feet along the East boundary of said State Lease No. 19363 to its Northeast corner having Coordinates of X = 1,968,305.34 and Y = 345,300.00; thence North 88 degrees 25 minutes 25 seconds East 2,675.98 feet to a point having Coordinates of X = 1,970,980.30 and Y = 345,373.62; thence North 89 degrees 11 minutes 34 seconds East 10,652.03 feet to a point having Coordinates of X = 1,981,631.28 and Y = 345,523.67; thence South 00 degrees 02 minutes 48 seconds West 5,291.47 feet to a point having Coordinates of X = 1,981,626.97 and Y = 340,232.20; thence South 89 degrees 29 minutes 13 seconds West 13,349.29 feet to the point of beginning, containing approximately **1,058 acres**, all as more particularly outlined on a plat on file in the Office of Mineral Resources, Department of Natural Resources. All bearings, distances and coordinates are based on Louisiana Coordinate System of 1927, (North or South Zone), where applicable.

NOTE: The above description of the Tract nominated for lease has been provided and corrected, where required, exclusively by the nomination party. Any mineral lease selected from this Tract and awarded by the Louisiana State Mineral Board shall be without warranty of any kind, either express, implied, or statutory, including, but not limited to, the implied warranties of merchantability and fitness for a particular purpose. Should the mineral lease awarded by the Louisiana State Mineral Board be subsequently modified, cancelled or abrogated due to the existence of conflicting leases, operating agreements, private claims or other future obligations or conditions which may affect all or any portion of the leased Tract, it shall not relieve the Lessee of the obligation to pay any bonus due thereon to the Louisiana State Mineral Board, nor shall the Louisiana State Mineral Board be obligated to refund any consideration paid by the Lessor prior to such modification, cancellation, or abrogation, including, but not limited to, bonuses, rentals and royalties.

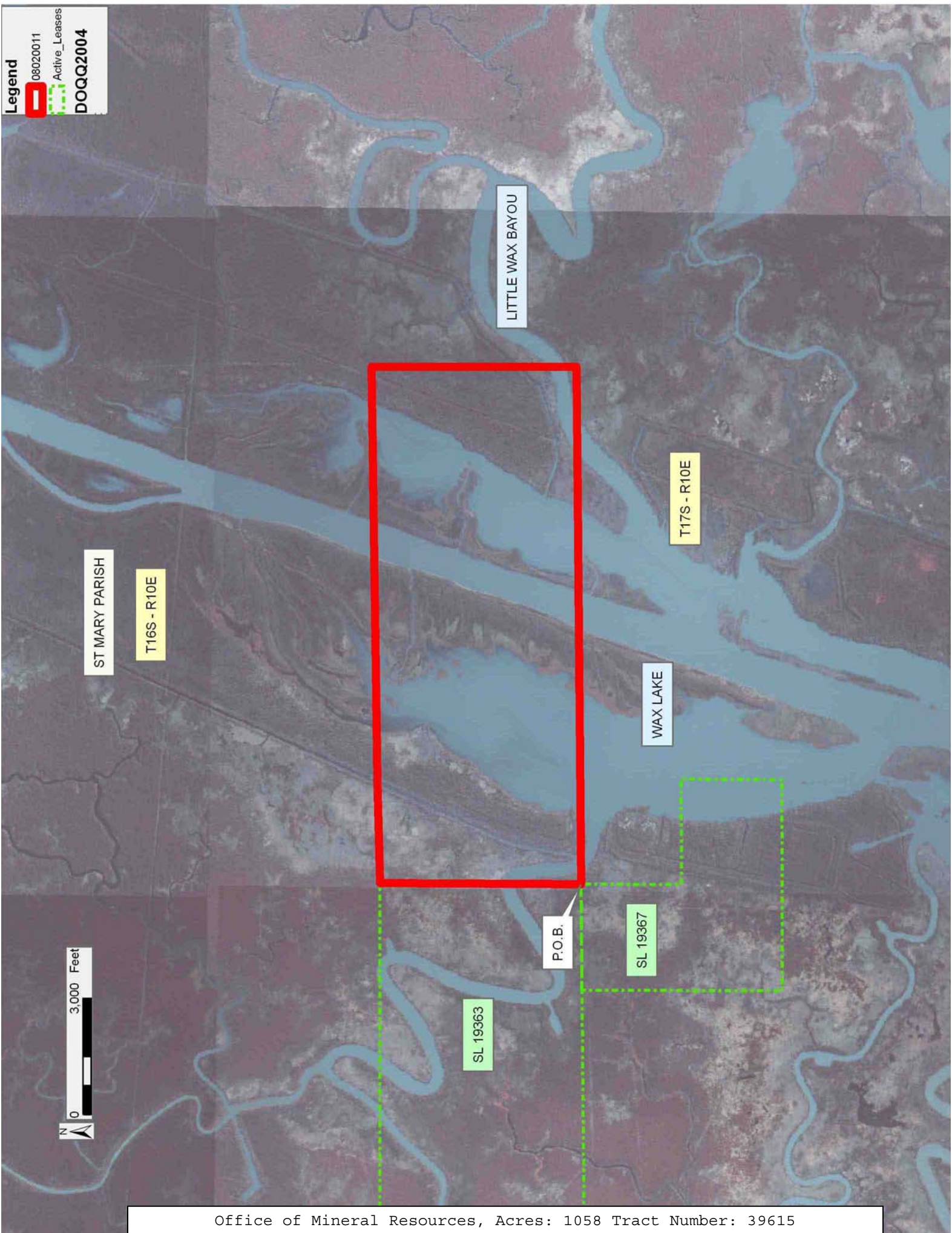
NOTE: The State of Louisiana does hereby reserve, and this lease shall be subject to, the imprescriptible right of surface use in the nature of a servitude in favor of the Department of Natural Resources, including its Offices and Commissions, for the sole purpose of implementing, constructing, servicing and maintaining approved coastal zone management and/or restoration projects. Utilization of any and all rights derived under this lease by the mineral lessee, its agents, successors or assigns,

shall not interfere with nor hinder the reasonable surface use by the Department of Natural Resources, its Offices or Commissions, as herein above reserved.

Applicant: FLEETWOOD RESOURCES, INC.

Bidder	Cash Payment	Price/Acre	Rental	Oil	Gas	Other

Legend
08020011
Active_Leases
DOQQ2004



TRACT 39616 - St. Mary Parish, Louisiana

All of the lands now or formerly constituting the beds and bottoms of all water bodies of every nature and description as to which title is vested in the State of Louisiana, together with all islands arising therein and other lands formed by accretion or by reliction, where allowed by law, excepting tax adjudicated lands, and not presently under mineral lease on February 13, 2008, situated in St. Mary Parish, Louisiana, and more particularly described as follows: Beginning at a point having Coordinates of X = 1,987,112.43 and Y = 345,554.32; thence South 00 degrees 09 minutes 42 seconds West 2,732.43 feet to a point having Coordinates of X = 1,987,104.72 and Y = 342,821.90; thence South 00 degrees 12 minutes 22 seconds East 4,126.40 feet to the Northwest corner of State Lease No. 19525 having Coordinates of X = 1,987,119.56 and Y = 338,695.53; thence South 00 degrees 12 minutes 22 seconds East approximately 6,317 feet along the Western boundary of said State Lease No. 19525 to a point on the boundary of State Lease No. 3185, as amended; thence along the boundary of said State Lease No. 3185 the following courses: Westerly approximately 5,470 feet to a point and Northerly approximately 2,762 feet to its Northernmost Northeast corner; thence Northerly approximately 5,152 feet to a point having Coordinates of X = 1,981,626.97 and Y = 340,232.20; thence North 00 degrees 02 minutes 48 seconds East 5,291.47 feet to a point having Coordinates of X = 1,981,631.28 and Y = 345,523.67; thence North 89 degrees 40 minutes 47 seconds East 5,481.24 feet to the point of beginning, **LESS AND EXCEPT** that portion, if any, of State Lease No. 3185, as amended, which lies within the above described tract, containing approximately **247 acres**, all as more particularly outlined on a plat on file in the Office of Mineral Resources, Department of Natural Resources. All bearings, distances and coordinates are based on Louisiana Coordinate System of 1927, (North or South Zone), where applicable.

NOTE: The above description of the Tract nominated for lease has been provided and corrected, where required, exclusively by the nomination party. Any mineral lease selected from this Tract and awarded by the Louisiana State Mineral Board shall be without warranty of any kind, either express, implied, or statutory, including, but not limited to, the implied warranties of merchantability and fitness for a particular purpose. Should the mineral lease awarded by the Louisiana State Mineral Board be subsequently modified, cancelled or abrogated due to the existence of conflicting leases, operating agreements, private claims or other future obligations or conditions which may affect all or any portion of the leased Tract, it shall not relieve the Lessee of the obligation to pay any bonus due thereon to the Louisiana State Mineral Board, nor shall the Louisiana State Mineral Board be obligated to refund any consideration paid by the Lessor prior to such modification, cancellation, or abrogation, including, but not limited to, bonuses, rentals and royalties.

NOTE: The State of Louisiana does hereby reserve, and this lease shall be subject to, the imprescriptible right of surface use in the nature of a servitude in favor of the Department of Natural Resources, including its

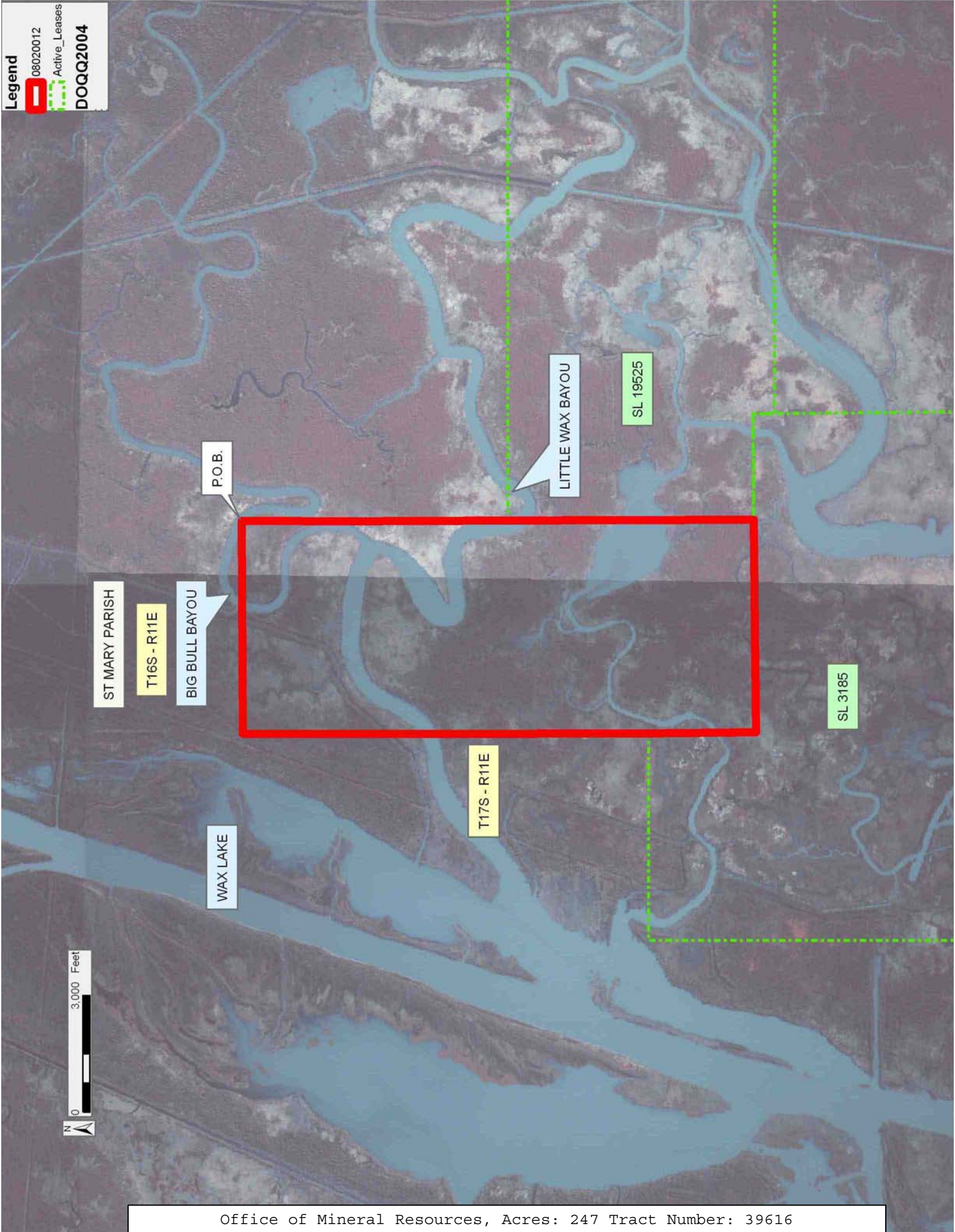
Offices and Commissions, for the sole purpose of implementing, constructing, servicing and maintaining approved coastal zone management and/or restoration projects. Utilization of any and all rights derived under this lease by the mineral lessee, its agents, successors or assigns, shall not interfere with nor hinder the reasonable surface use by the Department of Natural Resources, its Offices or Commissions, as herein above reserved.

Applicant: FLEETWOOD RESOURCES, INC.

Bidder	Cash Payment	Price/Acre	Rental	Oil	Gas	Other

Legend

- 08020012
- Active_Leases
- DOQQ2004



TRACT 39617 - St. Mary and Terrebonne Parishes, Louisiana

All of the lands now or formerly constituting the beds and bottoms of all water bodies of every nature and description as to which title is vested in the State of Louisiana, together with all islands arising therein and other lands formed by accretion or by reliction, where allowed by law, excepting tax adjudicated lands, and not presently under mineral lease on February 13, 2008, situated in St. Mary and Terrebonne Parishes, Louisiana, and more particularly described as follows: Beginning at a point having Coordinates of X = 2,043,211.50 and Y = 337,020.23; thence North 6,789.99 feet to a point having Coordinates of X = 2,043,211.50 and Y = 343,810.22; thence East 5,711.26 feet to the Southwest corner of State Lease No. 19330, also being the Northwest corner of State Lease No. 19331 having Coordinates of X = 2,048,922.76 and Y = 343,810.22; thence South 00 degrees 52 minutes 35 seconds East 2,678.66 feet along the West boundary of said State Lease No. 19331 to its Southwest corner having Coordinates of X = 2,048,963.73 and Y = 341,131.88; thence South 54 degrees 26 minutes 35 seconds West 7,070.63 feet to the point of beginning, **LESS AND EXCEPT** that portion, if any, of State Lease No. 19330 and State Lease No. 19331 which may lie within the above described tract, containing approximately **173 acres**, all as more particularly outlined on a plat on file in the Office of Mineral Resources, Department of Natural Resources. All bearings, distances and coordinates are based on Louisiana Coordinate System of 1927, (North or South Zone), where applicable.

NOTE: The above description of the Tract nominated for lease has been provided and corrected, where required, exclusively by the nomination party. Any mineral lease selected from this Tract and awarded by the Louisiana State Mineral Board shall be without warranty of any kind, either express, implied, or statutory, including, but not limited to, the implied warranties of merchantability and fitness for a particular purpose. Should the mineral lease awarded by the Louisiana State Mineral Board be subsequently modified, cancelled or abrogated due to the existence of conflicting leases, operating agreements, private claims or other future obligations or conditions which may affect all or any portion of the leased Tract, it shall not relieve the Lessee of the obligation to pay any bonus due thereon to the Louisiana State Mineral Board, nor shall the Louisiana State Mineral Board be obligated to refund any consideration paid by the Lessor prior to such modification, cancellation, or abrogation, including, but not limited to, bonuses, rentals and royalties.

NOTE: The acreage contained herein, being a portion of State Lease 335, 340 or 341, was subject to the litigation between Texas, Inc. and the State of Louisiana which resulted in the Global Settlement Agreement compromise whereby this acreage was reassigned through various mesne conveyances to the successors of William T. Burton, the original lessee of said leases from the State, (hereinafter otherwise referred to as the "ORRO's) and approved by the State Mineral Board, becoming effective April 25, 1994. Under separate agreement by and between the State and the ORRO's, certain obligations were to be met within a specified time frame

or the ORRO's became obligated to release the reassigned acreage back to the State. The obligations were not met within the specified time frame and the State began securing the releases for the acreage contained herein. Due to the extremely large number of ORRO's, their nationwide and worldwide dispersal, the unreliability of available contact information and/or a present inability to obtain full, requisite cooperation, the State has, as yet, not secured releases from certain ORRO's representing approximately a .0258336 interest in this acreage. Accordingly, although the State is diligently pursuing the requisite releases affecting this acreage (the furnishing of which the ORRO's representing the stated decimal interest are obligated), nevertheless, a party obtaining a mineral lease from the State of Louisiana on the acreage contained herein shall do so with full knowledge that a complete release of all specific ORRO interest in this acreage has not as yet been secured and shall assume a business risk commensurate with the unsecured interest release.

NOTE: The State of Louisiana does hereby reserve, and this lease shall be subject to, the imprescriptible right of surface use in the nature of a servitude in favor of the Department of Natural Resources, including its Offices and Commissions, for the sole purpose of implementing, constructing, servicing and maintaining approved coastal zone management and/or restoration projects. Utilization of any and all rights derived under this lease by the mineral lessee, its agents, successors or assigns, shall not interfere with nor hinder the reasonable surface use by the Department of Natural Resources, its Offices or Commissions, as herein above reserved.

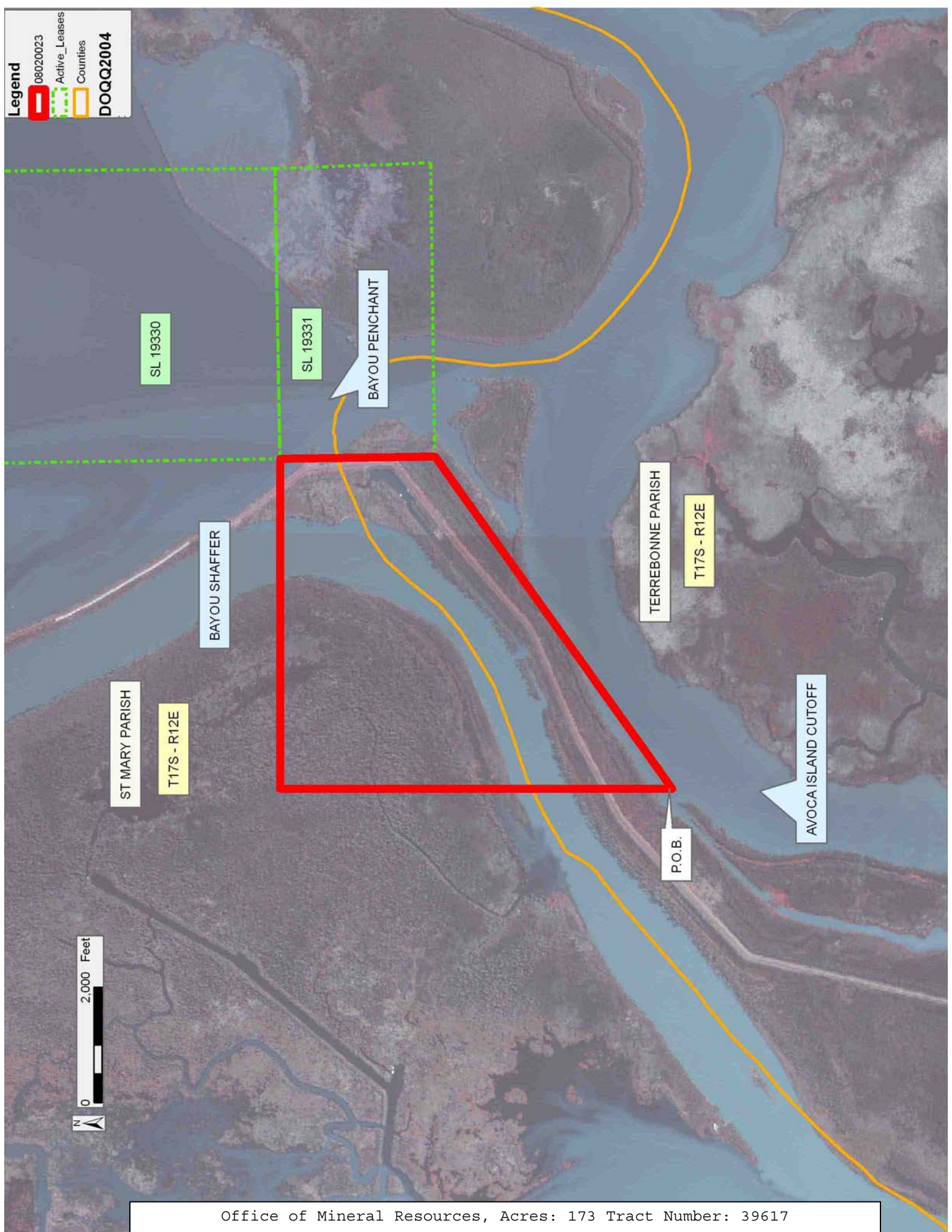
Applicant: LAND MANAGEMENT SERVICES, L.L.C.

Bidder	Cash Payment	Price/Acre	Rental	Oil	Gas	Other

Legend

- ▭ 08020023
- - - Active_Leases
- ▭ Counties

DOQQ2004



TRACT 39618 - St. Mary and Terrebonne Parishes, Louisiana

All of the lands now or formerly constituting the beds and bottoms of all water bodies of every nature and description as to which title is vested in the State of Louisiana, together with all islands arising therein and other lands formed by accretion or by reliction, where allowed by law, excepting tax adjudicated lands, and not presently under mineral lease on February 13, 2008, situated in St. Mary and Terrebonne Parishes, Louisiana, and more particularly described as follows: Beginning at a point having Coordinates of X = 2,043,211.50 and Y = 337,020.23; thence South 54 degrees 26 minutes 35 seconds West 3,938.37 feet to a point having Coordinates of X = 2,040,007.48 and Y = 334,730.03; thence North 5,218.45 feet to a point having Coordinates of X = 2,040,007.48 and Y = 339,948.48; thence North 54 degrees 26 minutes 35 seconds East 3,938.37 feet to a point having Coordinates of X = 2,043,211.50 and Y = 342,238.68; thence South 5,218.45 feet to the point of beginning, containing approximately **111 acres**, all as more particularly outlined on a plat on file in the Office of Mineral Resources, Department of Natural Resources. All bearings, distances and coordinates are based on Louisiana Coordinate System of 1927, (North or South Zone), where applicable.

NOTE: The above description of the Tract nominated for lease has been provided and corrected, where required, exclusively by the nomination party. Any mineral lease selected from this Tract and awarded by the Louisiana State Mineral Board shall be without warranty of any kind, either express, implied, or statutory, including, but not limited to, the implied warranties of merchantability and fitness for a particular purpose. Should the mineral lease awarded by the Louisiana State Mineral Board be subsequently modified, cancelled or abrogated due to the existence of conflicting leases, operating agreements, private claims or other future obligations or conditions which may affect all or any portion of the leased Tract, it shall not relieve the Lessee of the obligation to pay any bonus due thereon to the Louisiana State Mineral Board, nor shall the Louisiana State Mineral Board be obligated to refund any consideration paid by the Lessor prior to such modification, cancellation, or abrogation, including, but not limited to, bonuses, rentals and royalties.

NOTE: The acreage contained herein, being a portion of State Lease 335, 340 or 341, was subject to the litigation between Texas, Inc. and the State of Louisiana which resulted in the Global Settlement Agreement compromise whereby this acreage was reassigned through various mesne conveyances to the successors of William T. Burton, the original lessee of said leases from the State, (hereinafter otherwise referred to as the "ORRO's) and approved by the State Mineral Board, becoming effective April 25, 1994. Under separate agreement by and between the State and the ORRO's, certain obligations were to be met within a specified time frame or the ORRO's became obligated to release the reassigned acreage back to the State. The obligations were not met within the specified time frame and the State began securing the releases for the acreage contained herein. Due to the extremely large number of ORRO's, their nationwide and

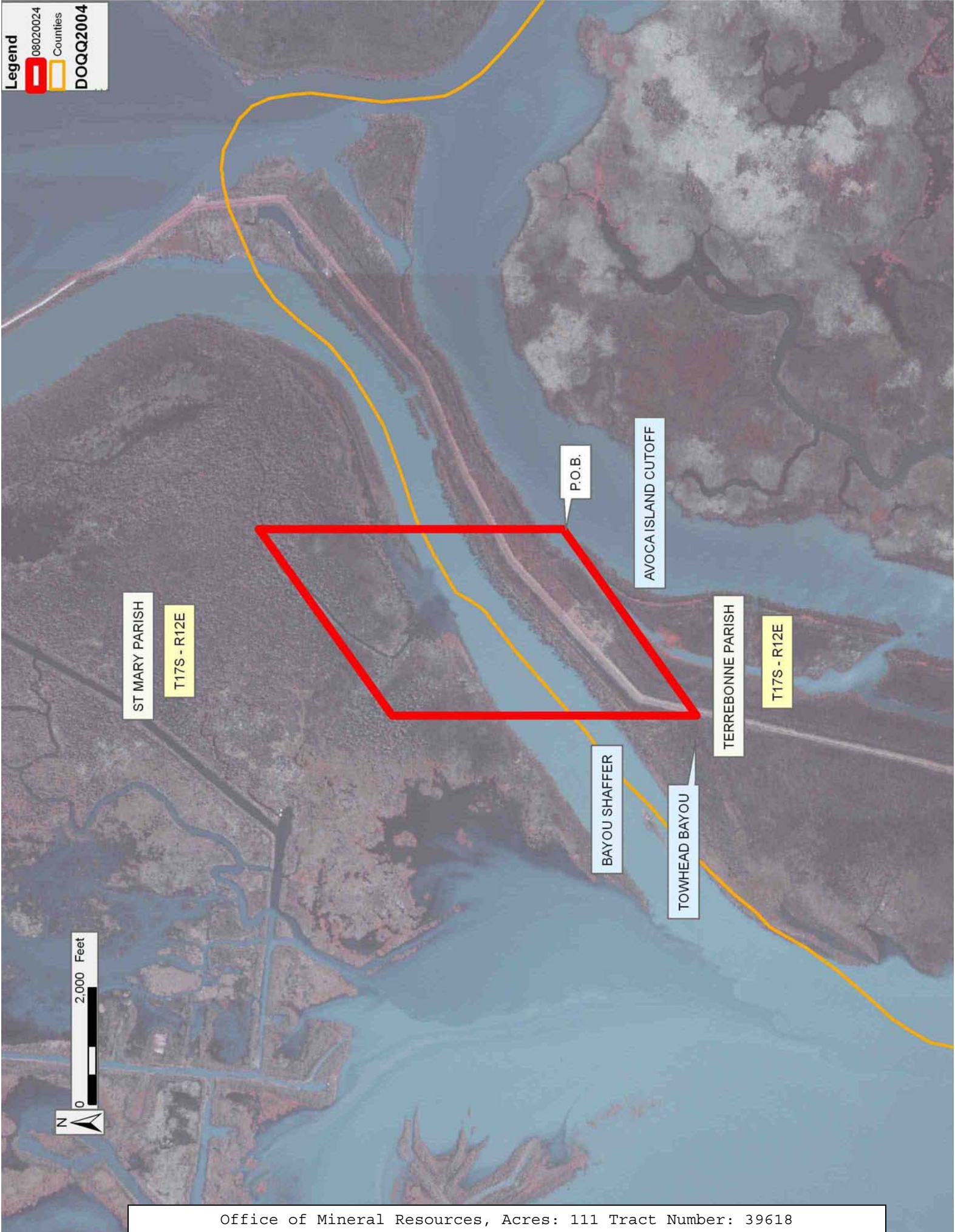
worldwide dispersal, the unreliability of available contact information and/or a present inability to obtain full, requisite cooperation, the State has, as yet, not secured releases from certain ORRO's representing approximately a .0258336 interest in this acreage. Accordingly, although the State is diligently pursuing the requisite releases affecting this acreage (the furnishing of which the ORRO's representing the stated decimal interest are obligated), nevertheless, a party obtaining a mineral lease from the State of Louisiana on the acreage contained herein shall do so with full knowledge that a complete release of all specific ORRO interest in this acreage has not as yet been secured and shall assume a business risk commensurate with the unsecured interest release.

NOTE: The State of Louisiana does hereby reserve, and this lease shall be subject to, the imprescriptible right of surface use in the nature of a servitude in favor of the Department of Natural Resources, including its Offices and Commissions, for the sole purpose of implementing, constructing, servicing and maintaining approved coastal zone management and/or restoration projects. Utilization of any and all rights derived under this lease by the mineral lessee, its agents, successors or assigns, shall not interfere with nor hinder the reasonable surface use by the Department of Natural Resources, its Offices or Commissions, as herein above reserved.

Applicant: LAND MANAGEMENT SERVICES, L.L.C.

Bidder	Cash Payment	Price/Acre	Rental	Oil	Gas	Other

Legend
08020024
Counties
DOQQ2004



TRACT 39619 - St. Mary Parish, Louisiana

All of the lands now or formerly constituting the beds and bottoms of all water bodies of every nature and description as to which title is vested in the State of Louisiana, together with all islands arising therein and other lands formed by accretion or by reliction, where allowed by law, excepting tax adjudicated lands, and not presently under mineral lease on February 13, 2008, situated in St. Mary Parish, Louisiana, and more particularly described as follows: Beginning at the Southeast corner of State Lease No. 19363, also being the Northernmost Northeast corner of State Lease No. 19367 having Coordinates of X = 1,968,278.22 and Y = 340,112.64; thence North 89 degrees 29 minutes 13 seconds East 13,349.29 feet to a point having Coordinates of X = 1,981,626.97 and Y = 340,232.20; thence Southerly approximately 5,152 feet to the Northernmost Northeast corner of State Lease No. 3185, as amended; thence Westerly approximately 5,320 feet along the Northern boundary of said State Lease No. 3185 to its Northwest corner, also being the Northernmost Northeast corner of State Lease No. 3586; thence Westerly approximately 1,243 feet along the Northern boundary of said State Lease No. 3586 to its Northwest corner; thence Westerly approximately 4,114 feet to the Northeast corner of State Lease No. 19369, also being the Southeast corner of said State Lease No. 19367 having Coordinates of X = 1,970,969.52 and Y = 334,930.97; thence along the boundary of said State Lease No. 19367 the following courses: North 00 degrees 23 minutes 04 seconds East 2,603.27 feet to a point having Coordinates of X = 1,970,986.99 and Y = 337,534.19; South 89 degrees 40 minutes 14 seconds West 2,722.41 feet to a point having Coordinates of X = 1,968,264.63 and Y = 337,518.53 and North 00 degrees 18 minutes 01 seconds East 2,594.15 feet to the point of beginning, **LESS AND EXCEPT** that portion, if any, of State Lease No. 3185, as amended, and State Lease No. 3586 which lies within the above described tract, containing approximately 850 gross acres and approximately **127.5 net acres**, all as more particularly outlined on a plat on file in the Office of Mineral Resources, Department of Natural Resources. All bearings, distances and coordinates are based on Louisiana Coordinate System of 1927, (North or South Zone), where applicable.

NOTE: The above description of the Tract nominated for lease has been provided and corrected, where required, exclusively by the nomination party. Any mineral lease selected from this Tract and awarded by the Louisiana State Mineral Board shall be without warranty of any kind, either express, implied, or statutory, including, but not limited to, the implied warranties of merchantability and fitness for a particular purpose. Should the mineral lease awarded by the Louisiana State Mineral Board be subsequently modified, cancelled or abrogated due to the existence of conflicting leases, operating agreements, private claims or other future obligations or conditions which may affect all or any portion of the leased Tract, it shall not relieve the Lessee of the obligation to pay any bonus due thereon to the Louisiana State Mineral Board, nor shall the Louisiana State Mineral Board be obligated to refund any consideration

paid by the Lessor prior to such modification, cancellation, or abrogation, including, but not limited to, bonuses, rentals and royalties.

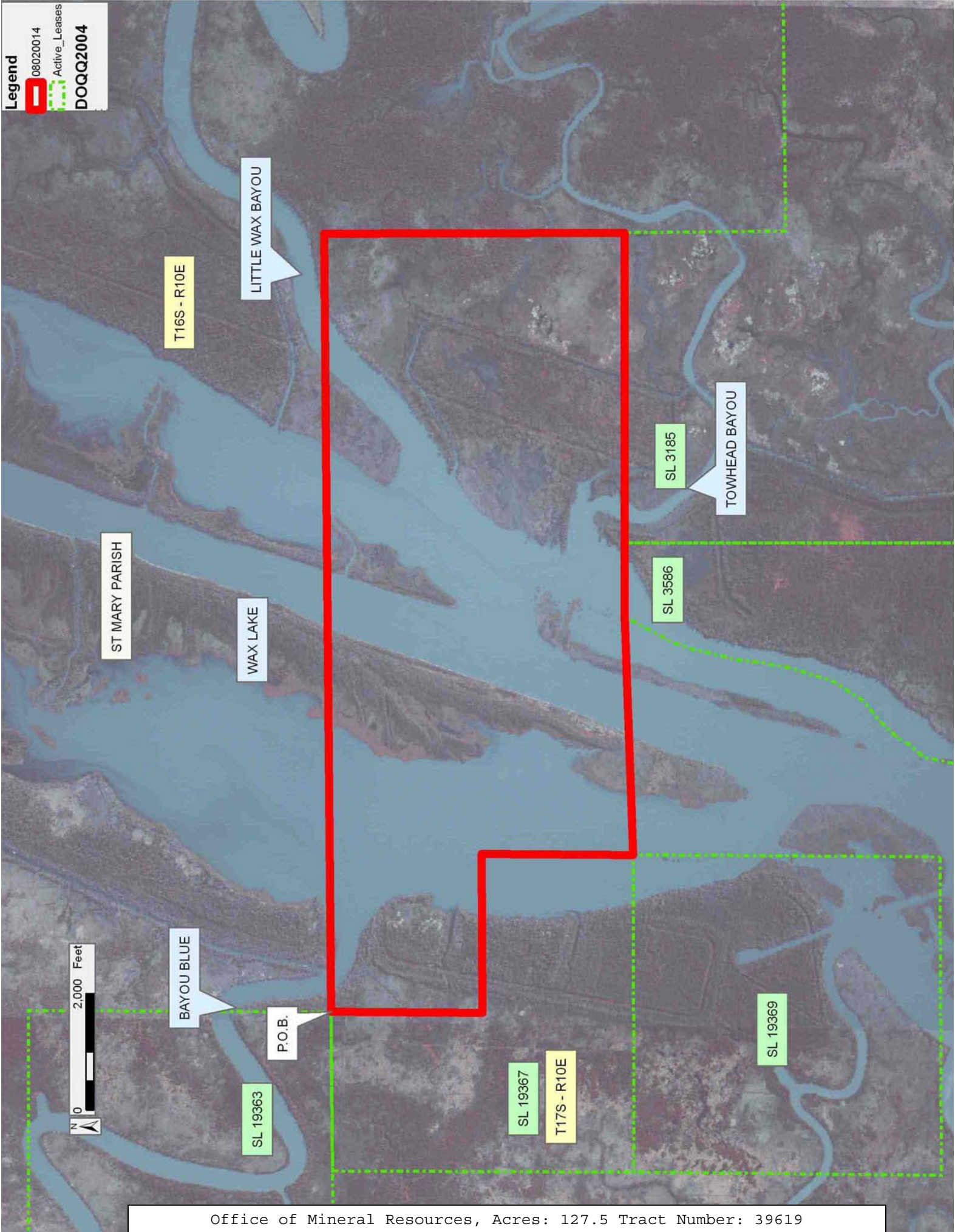
NOTE: The State of Louisiana does hereby reserve, and this lease shall be subject to, the imprescriptible right of surface use in the nature of a servitude in favor of the Department of Natural Resources, including its Offices and Commissions, for the sole purpose of implementing, constructing, servicing and maintaining approved coastal zone management and/or restoration projects. Utilization of any and all rights derived under this lease by the mineral lessee, its agents, successors or assigns, shall not interfere with nor hinder the reasonable surface use by the Department of Natural Resources, its Offices or Commissions, as herein above reserved.

Applicant: FLEETWOOD RESOURCES, INC.

Bidder	Cash Payment	Price/Acre	Rental	Oil	Gas	Other

Legend

- 08020014
- Active_Leases
- DOQQ2004



Office of Mineral Resources, Acres: 127.5 Tract Number: 39619

TRACT 39620 - Terrebonne Parish, Louisiana

All of the lands now or formerly constituting the beds and bottoms of all water bodies of every nature and description as to which title is vested in the State of Louisiana, together with all islands arising therein and other lands formed by accretion or by reliction, where allowed by law, excepting tax adjudicated lands, and not presently under mineral lease on February 13, 2008, situated in Terrebonne Parish, Louisiana, and more particularly described as follows: Beginning at a point located on the East boundary of State Lease No. 18266, having Coordinates of X = 2,049,901.81 and Y = 290,700.00; thence East 7,023.19 feet to a point having Coordinates of X = 2,056,925.00 and Y = 290,700.00; thence South 5,155.86 feet to a point on the North boundary of State Lease No. 18267, having Coordinates of X = 2,056,925.00 and Y = 285,544.14; thence South 89 degrees 17 minutes 36 seconds West 5,315.83 feet along the North boundary of said State Lease No. 18267 to its Northwest corner having Coordinates of X = 2,051,609.57 and Y = 285,478.58; thence West 6,919.57 feet to a point having Coordinates of X = 2,044,690.00 and Y = 285,478.57; thence North 3,949.75 feet to a point on the South boundary of said State Lease No. 18266, having Coordinates of X = 2,044,690.00 and Y = 289,428.33; thence along the South and East boundary of said State Lease No. 18266 the following courses and distances: East 3,908.43 feet to a corner having Coordinates of X = 2,048,598.43 and Y = 289,428.33, North 89 degrees 43 minutes 01 seconds East 1,342.48 feet to a corner having Coordinates of X = 2,049,940.89 and Y = 289,434.96 and North 01 degrees 46 minutes 09 seconds West 1,265.64 feet to the point of beginning, containing approximately **60 acres**, all as more particularly outlined on a plat on file in the Office of Mineral Resources, Department of Natural Resources. All bearings, distances and coordinates are based on Louisiana Coordinate System of 1927, (North or South Zone), where applicable.

NOTE: The above description of the Tract nominated for lease has been provided and corrected, where required, exclusively by the nomination party. Any mineral lease selected from this Tract and awarded by the Louisiana State Mineral Board shall be without warranty of any kind, either express, implied, or statutory, including, but not limited to, the implied warranties of merchantability and fitness for a particular purpose. Should the mineral lease awarded by the Louisiana State Mineral Board be subsequently modified, cancelled or abrogated due to the existence of conflicting leases, operating agreements, private claims or other future obligations or conditions which may affect all or any portion of the leased Tract, it shall not relieve the Lessee of the obligation to pay any bonus due thereon to the Louisiana State Mineral Board, nor shall the Louisiana State Mineral Board be obligated to refund any consideration paid by the Lessor prior to such modification, cancellation, or abrogation, including, but not limited to, bonuses, rentals and royalties.

NOTE: The State of Louisiana does hereby reserve, and this lease shall be subject to, the imprescriptible right of surface use in the nature of a servitude in favor of the Department of Natural Resources, including its

Offices and Commissions, for the sole purpose of implementing, constructing, servicing and maintaining approved coastal zone management and/or restoration projects. Utilization of any and all rights derived under this lease by the mineral lessee, its agents, successors or assigns, shall not interfere with nor hinder the reasonable surface use by the Department of Natural Resources, its Offices or Commissions, as herein above reserved.

Applicant: THEOPHILUS OIL, GAS & LAND SERVICES, LLC

Bidder	Cash Payment	Price/Acre	Rental	Oil	Gas	Other

Legend
08020025
Active_Leases
DOQQ2004

