

TRACT 39601 - Concordia Parish, Louisiana

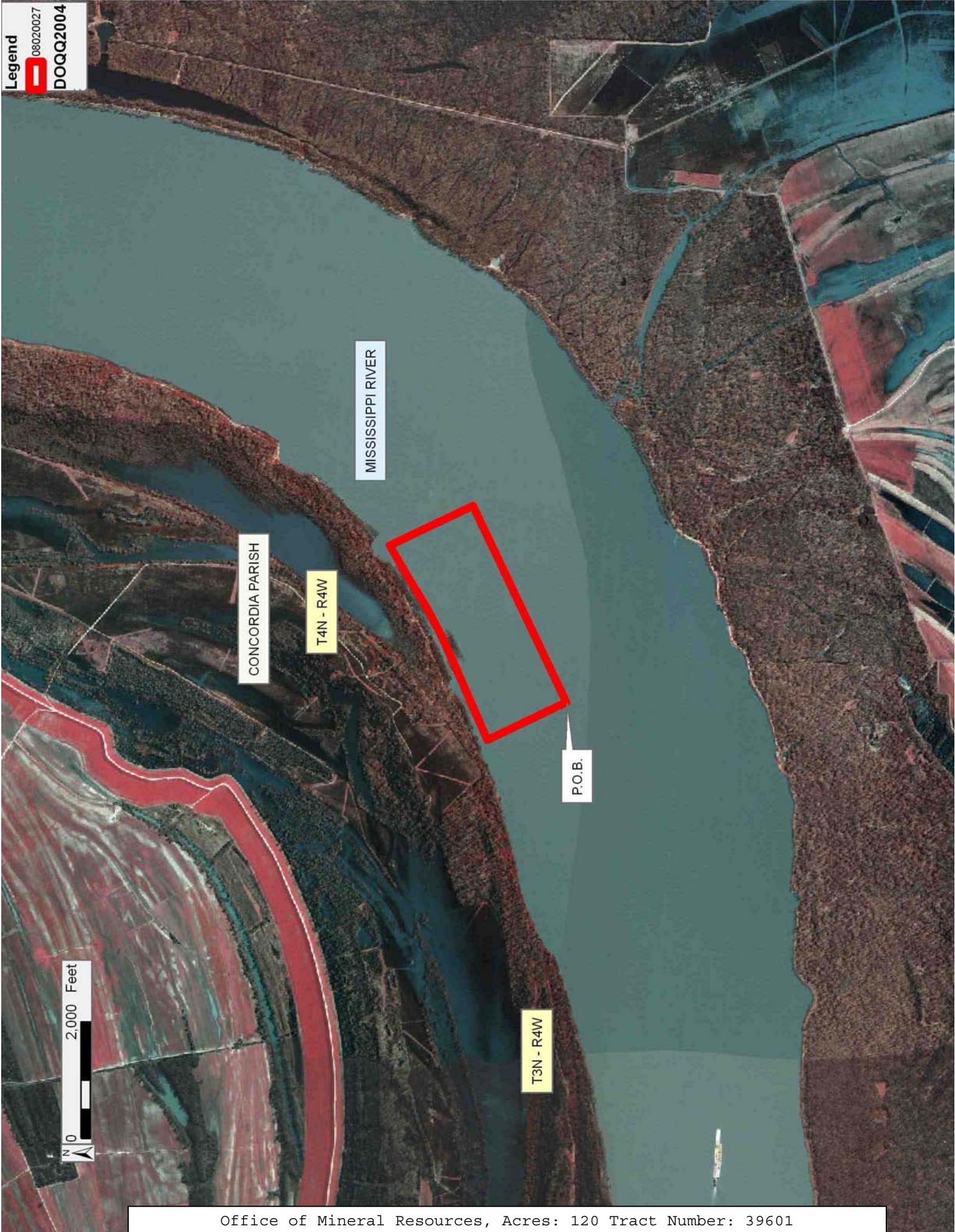
All of the lands now or formerly constituting the beds and bottoms of all water bodies of every nature and description as to which title is vested in the State of Louisiana, together with all islands arising therein and other lands formed by accretion or by reliction, where allowed by law, excepting tax adjudicated lands, and not presently under mineral lease on February 13, 2008, situated in Concordia Parish, Louisiana, and more particularly described as follows: BEGINNING at a point in the Mississippi River having a co ordinate of X = 2,300,471.00 and Y = 219,950.00, said point being the most southerly corner of within described tract. Thence from said point of beginning go North 64 degrees 00 minutes 00 seconds East for 3,725.00 feet to the most easterly corner of within described tract, having a co ordinate of X = 2,303,819.01 and Y = 221,582.93; thence go North 26 degrees 00 minutes 00 seconds West for 1580 feet, more or less, to the average low water plane of said Mississippi River, having a co ordinate of X = 2,303,126.38 and Y = 223,003.03; thence go in a general southwesterly direction, downstream, along the boundary between the State of Louisiana Lease and R. B. Sharp Lease for 3730 feet, more or less, to the most westerly corner of within described tract, having a co ordinate of X = 2,299,813.44 and Y = 221,298.19; thence leaving said boundary go South 26 degrees 00 minutes 00 seconds East for 1500 feet, more or less, to the point of beginning. Within described tract containing approximately approximately **120 acres**, all as more particularly outlined on a plat on file in the Office of Mineral Resources, Department of Natural Resources. All bearings, distances and coordinates are based on Louisiana Coordinate System of 1927, (North or South Zone), where applicable.

NOTE: The above description of the Tract nominated for lease has been provided and corrected, where required, exclusively by the nomination party. Any mineral lease selected from this Tract and awarded by the Louisiana State Mineral Board shall be without warranty of any kind, either express, implied, or statutory, including, but not limited to, the implied warranties of merchantability and fitness for a particular purpose. Should the mineral lease awarded by the Louisiana State Mineral Board be subsequently modified, cancelled or abrogated due to the existence of conflicting leases, operating agreements, private claims or other future obligations or conditions which may affect all or any portion of the leased Tract, it shall not relieve the Lessee of the obligation to pay any bonus due thereon to the Louisiana State Mineral Board, nor shall the Louisiana State Mineral Board be obligated to refund any consideration paid by the Lessor prior to such modification, cancellation, or abrogation, including, but not limited to, bonuses, rentals and royalties.

NOTE: The Office of Mineral Resources will require a minimum bonus of \$75 per acre and a minimum royalty of 20%.

Applicant: OFFICE OF MINERAL RESOURCES

Bidder	Cash Payment	Price/Acre	Rental	Oil	Gas	Other



TRACT 39602 - Acadia Parish, Louisiana

All of the lands now or formerly constituting the beds and bottoms of all water bodies of every nature and description as to which title is vested in the State of Louisiana, together with all islands arising therein and other lands formed by accretion or by reliction, where allowed by law, excepting tax adjudicated lands, and not presently under mineral lease on February 13, 2008, situated in Acadia Parish, Louisiana, and more particularly described as follows: Beginning at a point having a Coordinates X = 1,722,240.48 feet and Y = 616,339.11 feet; thence South 6,100.00 feet to a point having Coordinates of X = 1,722,240.48 and Y = 610,239.11 feet; thence West 2,800.00 feet to a point having Coordinates of X = 1,719,440.48 feet and Y = 610,239.11 feet; thence North 6,100.00 feet to a point having Coordinates of X = 1,719,440.48 feet and Y = 616,339.11; thence East 2,800 feet to the point of beginning, containing approximately **5 acres**, all as more particularly outlined on a plat on file in the Office of Mineral Resources, Department of Natural Resources. All bearings, distances and coordinates are based on Louisiana Coordinate System of 1927, (North or South Zone), where applicable.

NOTE: The above description of the Tract nominated for lease has been provided and corrected, where required, exclusively by the nomination party. Any mineral lease selected from this Tract and awarded by the Louisiana State Mineral Board shall be without warranty of any kind, either express, implied, or statutory, including, but not limited to, the implied warranties of merchantability and fitness for a particular purpose. Should the mineral lease awarded by the Louisiana State Mineral Board be subsequently modified, cancelled or abrogated due to the existence of conflicting leases, operating agreements, private claims or other future obligations or conditions which may affect all or any portion of the leased Tract, it shall not relieve the Lessee of the obligation to pay any bonus due thereon to the Louisiana State Mineral Board, nor shall the Louisiana State Mineral Board be obligated to refund any consideration paid by the Lessor prior to such modification, cancellation, or abrogation, including, but not limited to, bonuses, rentals and royalties.

Applicant: ROOSEVELT LAND COMPANY

Bidder	Cash Payment	Price/Acre	Rental	Oil	Gas	Other

T8S - R3E

P.O.B.

ACADIA PARISH

T8S - R2E

BAYOU WIKOFF

0 2,000 Feet



TRACT 39603 - Acadia Parish, Louisiana

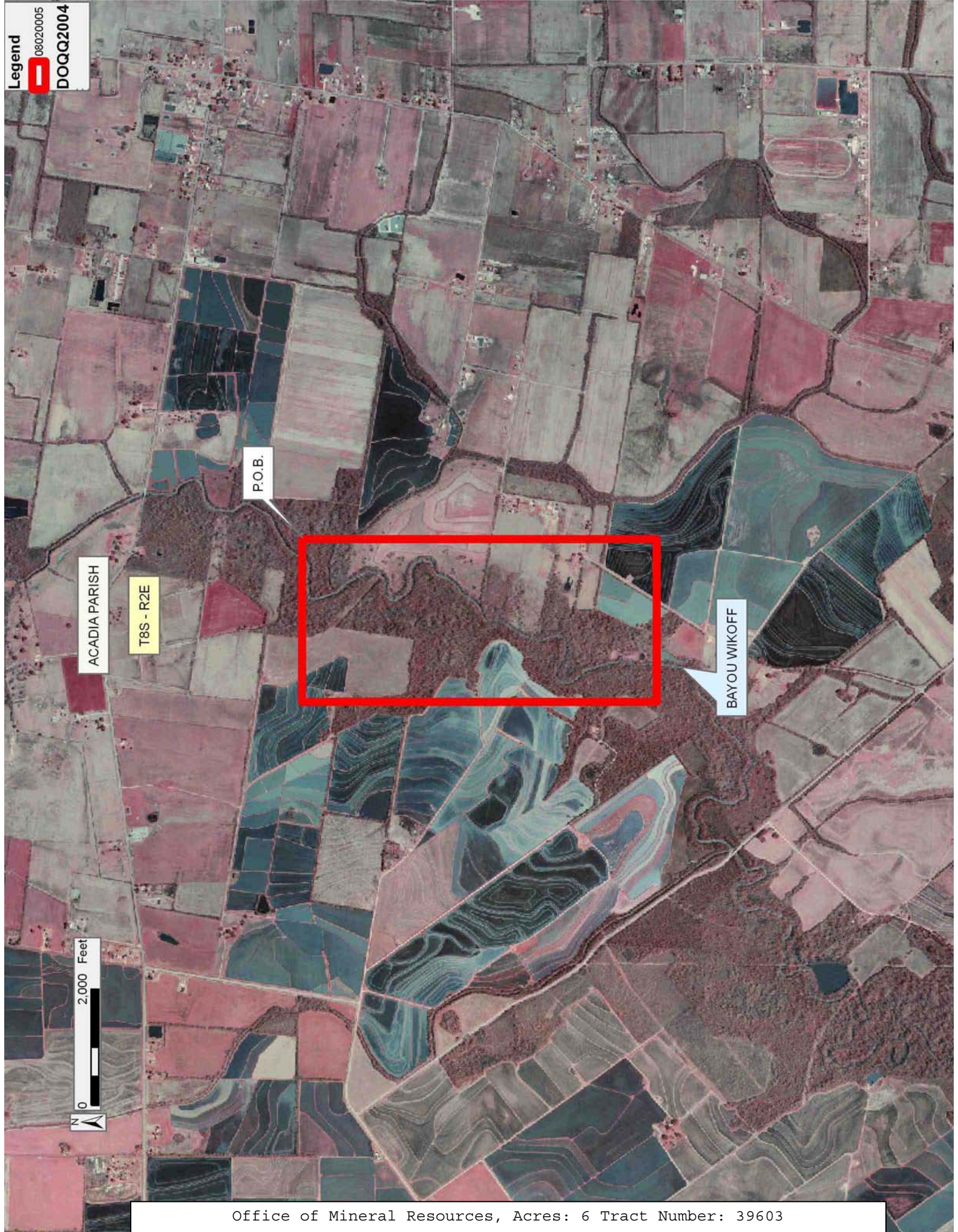
All of the lands now or formerly constituting the beds and bottoms of all water bodies of every nature and description as to which title is vested in the State of Louisiana, together with all islands arising therein and other lands formed by accretion or by reliction, where allowed by law, excepting tax adjudicated lands, and not presently under mineral lease on February 13, 2008, situated in Acadia Parish, Louisiana, and more particularly described as follows: Beginning at a point having a Coordinates X = 1,720,840.48 feet and Y = 610,239.11 feet; thence South 6,100.00 feet to a point having Coordinates of X = 1,720,840.48 and Y = 604,139.11 feet; thence West 2,800.00 feet to a point having Coordinates of X = 1,718,040.48 feet and Y = 604,139.11 feet; thence North 6,100.00 feet to a point having Coordinates of X = 1,718,040.48 feet and Y = 610,239.11; thence East 2,800 feet to the point of beginning, containing approximately **6 acres**, all as more particularly outlined on a plat on file in the Office of Mineral Resources, Department of Natural Resources. All bearings, distances and coordinates are based on Louisiana Coordinate System of 1927, (North or South Zone), where applicable.

NOTE: The above description of the Tract nominated for lease has been provided and corrected, where required, exclusively by the nomination party. Any mineral lease selected from this Tract and awarded by the Louisiana State Mineral Board shall be without warranty of any kind, either express, implied, or statutory, including, but not limited to, the implied warranties of merchantability and fitness for a particular purpose. Should the mineral lease awarded by the Louisiana State Mineral Board be subsequently modified, cancelled or abrogated due to the existence of conflicting leases, operating agreements, private claims or other future obligations or conditions which may affect all or any portion of the leased Tract, it shall not relieve the Lessee of the obligation to pay any bonus due thereon to the Louisiana State Mineral Board, nor shall the Louisiana State Mineral Board be obligated to refund any consideration paid by the Lessor prior to such modification, cancellation, or abrogation, including, but not limited to, bonuses, rentals and royalties.

Applicant: ROOSEVELT LAND COMPANY

Bidder	Cash Payment	Price/Acre	Rental	Oil	Gas	Other

Legend
08020005
DOQQ2004



TRACT 39604 - St. John The Baptist Parish, Louisiana

All of the lands now or formerly constituting the beds and bottoms of all water bodies of every nature and description as to which title is vested in the State of Louisiana, together with all islands arising therein and other lands formed by accretion or by reliction, where allowed by law, excepting tax adjudicated lands, and not presently under mineral lease on February 13, 2008, situated in St. John The Baptist Parish, Louisiana, and more particularly described as follows: Beginning at a point having Coordinates of X = 2,261,100.00 and Y = 502,200.00; thence North 4,500.00 feet to a point having Coordinates of X = 2,261,100.00 and Y = 506,700.00; thence East 11,600.00 feet to a point having Coordinates of X = 2,272,700.00 and Y = 506,700.00; thence South 4,500.00 feet to a point having Coordinates of X = 2,272,700.00 and Y = 502,200.00; thence West 11,600.00 feet to the point of beginning, containing approximately **609 acres**, all as more particularly outlined on a plat on file in the Office of Mineral Resources, Department of Natural Resources. All bearings, distances and coordinates are based on Louisiana Coordinate System of 1927, (North or South Zone), where applicable.

NOTE: The above description of the Tract nominated for lease has been provided and corrected, where required, exclusively by the nomination party. Any mineral lease selected from this Tract and awarded by the Louisiana State Mineral Board shall be without warranty of any kind, either express, implied, or statutory, including, but not limited to, the implied warranties of merchantability and fitness for a particular purpose. Should the mineral lease awarded by the Louisiana State Mineral Board be subsequently modified, cancelled or abrogated due to the existence of conflicting leases, operating agreements, private claims or other future obligations or conditions which may affect all or any portion of the leased Tract, it shall not relieve the Lessee of the obligation to pay any bonus due thereon to the Louisiana State Mineral Board, nor shall the Louisiana State Mineral Board be obligated to refund any consideration paid by the Lessor prior to such modification, cancellation, or abrogation, including, but not limited to, bonuses, rentals and royalties.

NOTE: The State of Louisiana does hereby reserve, and this lease shall be subject to, the imprescriptible right of surface use in the nature of a servitude in favor of the Department of Natural Resources, including its Offices and Commissions, for the sole purpose of implementing, constructing, servicing and maintaining approved coastal zone management and/or restoration projects. Utilization of any and all rights derived under this lease by the mineral lessee, its agents, successors or assigns, shall not interfere with nor hinder the reasonable surface use by the Department of Natural Resources, its Offices or Commissions, as herein above reserved.

Applicant: PATRICK L. DONOHUE PETROLEUM PROPERTIES, INC.

Bidder	Cash Payment	Price/Acre	Rental	Oil	Gas	Other

ST JOHN THE BAPTIST PARISH

T11S - R7E



MISSISSIPPI RIVER

P.O.B.

TRACT 39605 - St. John The Baptist Parish, Louisiana

All of the lands now or formerly constituting the beds and bottoms of all water bodies of every nature and description as to which title is vested in the State of Louisiana, together with all islands arising therein and other lands formed by accretion or by reliction, where allowed by law, excepting tax adjudicated lands, and not presently under mineral lease on February 13, 2008, situated in St. John The Baptist Parish, Louisiana, and more particularly described as follows: Beginning at a point having Coordinates of X = 2,244,600.00 and Y = 501,000.00; thence North 4,500.00 feet to a point having Coordinates of X = 2,244,600.00 and Y = 505,500.00; thence East 8,500.00 feet to a point having Coordinates of X = 2,253,100.00 and Y = 505,500.00; thence South 4,500.00 feet to a point having Coordinates of X = 2,253,100.00 and Y = 501,000.00; thence West 8,500.00 feet to the point of beginning, containing approximately **464 acres**, all as more particularly outlined on a plat on file in the Office of Mineral Resources, Department of Natural Resources. All bearings, distances and coordinates are based on Louisiana Coordinate System of 1927, (North or South Zone), where applicable.

NOTE: The above description of the Tract nominated for lease has been provided and corrected, where required, exclusively by the nomination party. Any mineral lease selected from this Tract and awarded by the Louisiana State Mineral Board shall be without warranty of any kind, either express, implied, or statutory, including, but not limited to, the implied warranties of merchantability and fitness for a particular purpose. Should the mineral lease awarded by the Louisiana State Mineral Board be subsequently modified, cancelled or abrogated due to the existence of conflicting leases, operating agreements, private claims or other future obligations or conditions which may affect all or any portion of the leased Tract, it shall not relieve the Lessee of the obligation to pay any bonus due thereon to the Louisiana State Mineral Board, nor shall the Louisiana State Mineral Board be obligated to refund any consideration paid by the Lessor prior to such modification, cancellation, or abrogation, including, but not limited to, bonuses, rentals and royalties.

NOTE: The State of Louisiana does hereby reserve, and this lease shall be subject to, the imprescriptible right of surface use in the nature of a servitude in favor of the Department of Natural Resources, including its Offices and Commissions, for the sole purpose of implementing, constructing, servicing and maintaining approved coastal zone management and/or restoration projects. Utilization of any and all rights derived under this lease by the mineral lessee, its agents, successors or assigns, shall not interfere with nor hinder the reasonable surface use by the Department of Natural Resources, its Offices or Commissions, as herein above reserved.

Applicant: PATRICK L. DONOHUE PETROLEUM PROPERTIES, INC.

Bidder	Cash Payment	Price/Acre	Rental	Oil	Gas	Other

ST JOHN THE BAPTIST PARISH

0 2,000 Feet

MISSISSIPPI RIVER

P.O.B.



TRACT 39606 - St. John The Baptist Parish, Louisiana

All of the lands now or formerly constituting the beds and bottoms of all water bodies of every nature and description as to which title is vested in the State of Louisiana, together with all islands arising therein and other lands formed by accretion or by reliction, where allowed by law, excepting tax adjudicated lands, and not presently under mineral lease on February 13, 2008, situated in St. John The Baptist Parish, Louisiana, and more particularly described as follows: Beginning at a point having Coordinates of X = 2,253,100.00 and Y = 501,200.00; thence North 4,500.00 feet to a point having Coordinates of X = 2,253,100.00 and Y = 505,700.00; thence East 8,000.00 feet to a point having Coordinates of X = 2,261,100.00 and Y = 505,700.00; thence South 4,500.00 feet to a point having Coordinates of X = 2,261,100.00 and Y = 501,200.00; thence West 8,000.00 feet to the point of beginning, containing approximately **428 acres**, all as more particularly outlined on a plat on file in the Office of Mineral Resources, Department of Natural Resources. All bearings, distances and coordinates are based on Louisiana Coordinate System of 1927, (North or South Zone), where applicable.

NOTE: The above description of the Tract nominated for lease has been provided and corrected, where required, exclusively by the nomination party. Any mineral lease selected from this Tract and awarded by the Louisiana State Mineral Board shall be without warranty of any kind, either express, implied, or statutory, including, but not limited to, the implied warranties of merchantability and fitness for a particular purpose. Should the mineral lease awarded by the Louisiana State Mineral Board be subsequently modified, cancelled or abrogated due to the existence of conflicting leases, operating agreements, private claims or other future obligations or conditions which may affect all or any portion of the leased Tract, it shall not relieve the Lessee of the obligation to pay any bonus due thereon to the Louisiana State Mineral Board, nor shall the Louisiana State Mineral Board be obligated to refund any consideration paid by the Lessor prior to such modification, cancellation, or abrogation, including, but not limited to, bonuses, rentals and royalties.

NOTE: The State of Louisiana does hereby reserve, and this lease shall be subject to, the imprescriptible right of surface use in the nature of a servitude in favor of the Department of Natural Resources, including its Offices and Commissions, for the sole purpose of implementing, constructing, servicing and maintaining approved coastal zone management and/or restoration projects. Utilization of any and all rights derived under this lease by the mineral lessee, its agents, successors or assigns, shall not interfere with nor hinder the reasonable surface use by the Department of Natural Resources, its Offices or Commissions, as herein above reserved.

Applicant: PATRICK L. DONOHUE PETROLEUM PROPERTIES, INC.

Bidder	Cash Payment	Price/Acre	Rental	Oil	Gas	Other

Legend
08020018
DOQQ2004

ST JOHN THE BAPTIST PARISH

0 2,000 Feet

MISSISSIPPI RIVER

P.O.B.



TRACT 39607 - Cameron Parish, Louisiana

All of the lands now or formerly constituting the beds and bottoms of all water bodies of every nature and description as to which title is vested in the State of Louisiana, together with all islands arising therein and other lands formed by accretion or by reliction, where allowed by law, excepting tax adjudicated lands, and not presently under mineral lease, or if under a mineral lease, that lease does not contain the rights for solid minerals, on February 13, 2008, situated in Cameron Parish, Louisiana, and more particularly described as follows: Beginning at a point having Coordinates of X = 1,381,200.00 and Y = 452,381.00; thence East 10,435.00 feet to a point having Coordinates of X = 1,391,635.00 and Y = 452,381.00; thence South 10,435.00 feet to a point having Coordinates of X = 1,391,635.00 and Y = 441,946.00; thence West 10,435.00 feet to a point having Coordinates of X = 1,381,200.00 and Y = 441,946.00; thence North 10,435.00 feet to the point of beginning, containing approximately 2,499.75 acres; **LESS AND EXCEPT** the following: Beginning at a point having Coordinates of X = 1,381,200.00 and Y = 452,381.00; thence South 44 degrees 31 minutes 20 seconds East 4917.39 feet to a point being the Point of Beginning have Coordinates of X = 1,384,648.00 and Y = 448,875.00; thence East 3,192.00 feet to a point having Coordinates of X = 1,387,840.00 and Y = 448,875.00; thence South 3,600.00 feet to a point having Coordinates of X = 1,387,840.00 and Y = 445,275.00; thence West 1,391.00 feet to a point having Coordinates of X = 1,386,449.00 and Y = 445,275.00; thence South 1,235.00 feet to a point having Coordinates of X = 1,386,449.00 and Y = 444,040.00; thence West 1,568.97 feet to a point having Coordinates of X = 1,384,880.03 and Y = 444,040.00; thence North 1,235.00 feet to a point having Coordinates of X = 1,384,880.03 and Y = 445,275.00; thence East 559.97 feet to a point having Coordinates of X = 1,385,440.00 and Y = 445,275.00; thence North 1,531.00 feet to a point having Coordinates of X = 1,385,440.00 and Y = 446,806.00; thence West 792.00 feet to a point having Coordinates of X = 1,384,648.00 and Y = 446,806.00; thence North 2069.00 feet to the point of beginning, containing approximately 280.45 acres; for a total nominated herein of **2,219.30 acres**, all as more particularly outlined on a plat on file in the Office of Mineral Resources, Department of Natural Resources. All bearings, distances and coordinates are based on Louisiana Coordinate System of 1927, (North or South Zone), where applicable.

NOTE: The above description of the Tract nominated for lease has been provided and corrected, where required, exclusively by the nomination party. Any mineral lease selected from this Tract and awarded by the Louisiana State Mineral Board shall be without warranty of any kind, either express, implied, or statutory, including, but not limited to, the implied warranties of merchantability and fitness for a particular purpose. Should the mineral lease awarded by the Louisiana State Mineral Board be subsequently modified, cancelled or abrogated due to the existence of conflicting leases, operating agreements, private claims or other future obligations or conditions which may affect all or any portion of the leased Tract, it shall not relieve the Lessee of the obligation to

pay any bonus due thereon to the Louisiana State Mineral Board, nor shall the Louisiana State Mineral Board be obligated to refund any consideration paid by the Lessor prior to such modification, cancellation, or abrogation, including, but not limited to, bonuses, rentals and royalties.

NOTE: THIS IS FOR SOLID MINERALS ONLY.

NOTE: There is a minimum bonus of One Thousand dollars (\$1,000.00) per acre.

NOTE: There is a minimum annual rental of \$1,000.00 per acre.

NOTE: The sold mineral lease will carry a five (5) year primary term.

NOTE: The State of Louisiana does hereby reserve, and this lease shall be subject to, the imprescriptible right of surface use in the nature of a servitude in favor of the Department of Natural Resources, including its Offices and Commissions, for the sole purpose of implementing, constructing, servicing and maintaining approved coastal zone management and/or restoration projects. Utilization of any and all rights derived under this lease by the mineral lessee, its agents, successors or assigns, shall not interfere with nor hinder the reasonable surface use by the Department of Natural Resources, its Offices or Commissions, as herein above reserved.

Applicant: WCJ ENTERPRISES, INC.

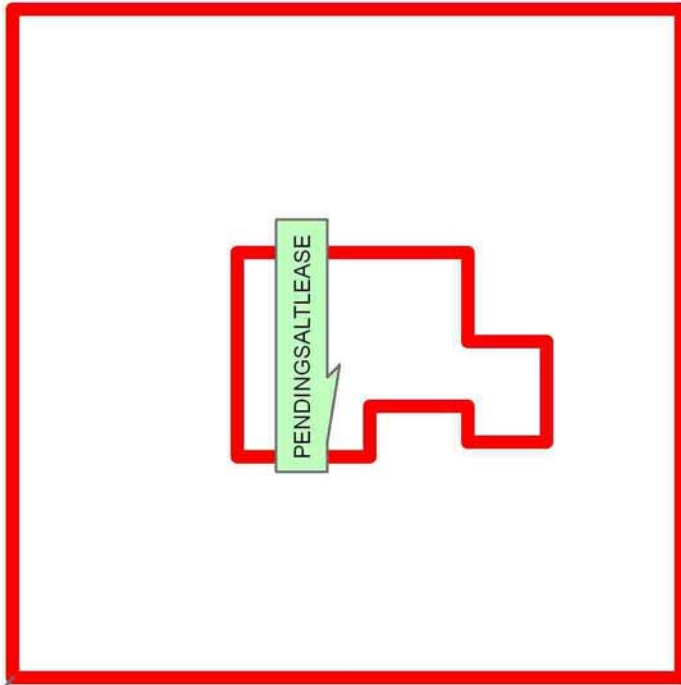
Bidder	Cash Payment	Price/Acre	Rental	Oil	Gas	Other



CAMERON PARISH

CALCASIEU LAKE

P.O.B.



TRACT 39608 - St. Mary Parish, Louisiana

All of the lands now or formerly constituting the beds and bottoms of all water bodies of every nature and description as to which title is vested in the State of Louisiana, together with all islands arising therein and other lands formed by accretion or by reliction, where allowed by law, excepting tax adjudicated lands, and not presently under mineral lease on February 13, 2008, situated in St. Mary Parish, Louisiana, and more particularly described as follows: Beginning at a point having Coordinates of X = 1,992,456.82 and Y = 361,358.67; thence North 89 degrees 20 minutes 02 seconds East 10,888.15 feet to a point having Coordinates of X = 2,003,344.23 and Y = 361,485.23; thence South 00 degrees 35 minutes 26 seconds East 15,893.17 feet to a point having Coordinates of X = 2,003,508.05 and Y = 345,592.90; thence South 89 degrees 57 minutes 26 seconds West 10,960.91 feet to a point having Coordinates of X = 1,992,547.14 and Y = 345,584.71; thence North 00 degrees 19 minutes 41 seconds West 15,774.22 feet to the point of beginning, **LESS AND EXCEPT** any right, title, and interest in lands owned by and not under lease from the State of Louisiana, on behalf of the St. Mary Parish School Board, situated in Section 16, Township 16 South, Range 11 East, St. Mary Parish, Louisiana, contained within the above described tract, containing approximately **119 acres**, all as more particularly outlined on a plat on file in the Office of Mineral Resources, Department of Natural Resources. All bearings, distances and coordinates are based on Louisiana Coordinate System of 1927, (North or South Zone), where applicable.

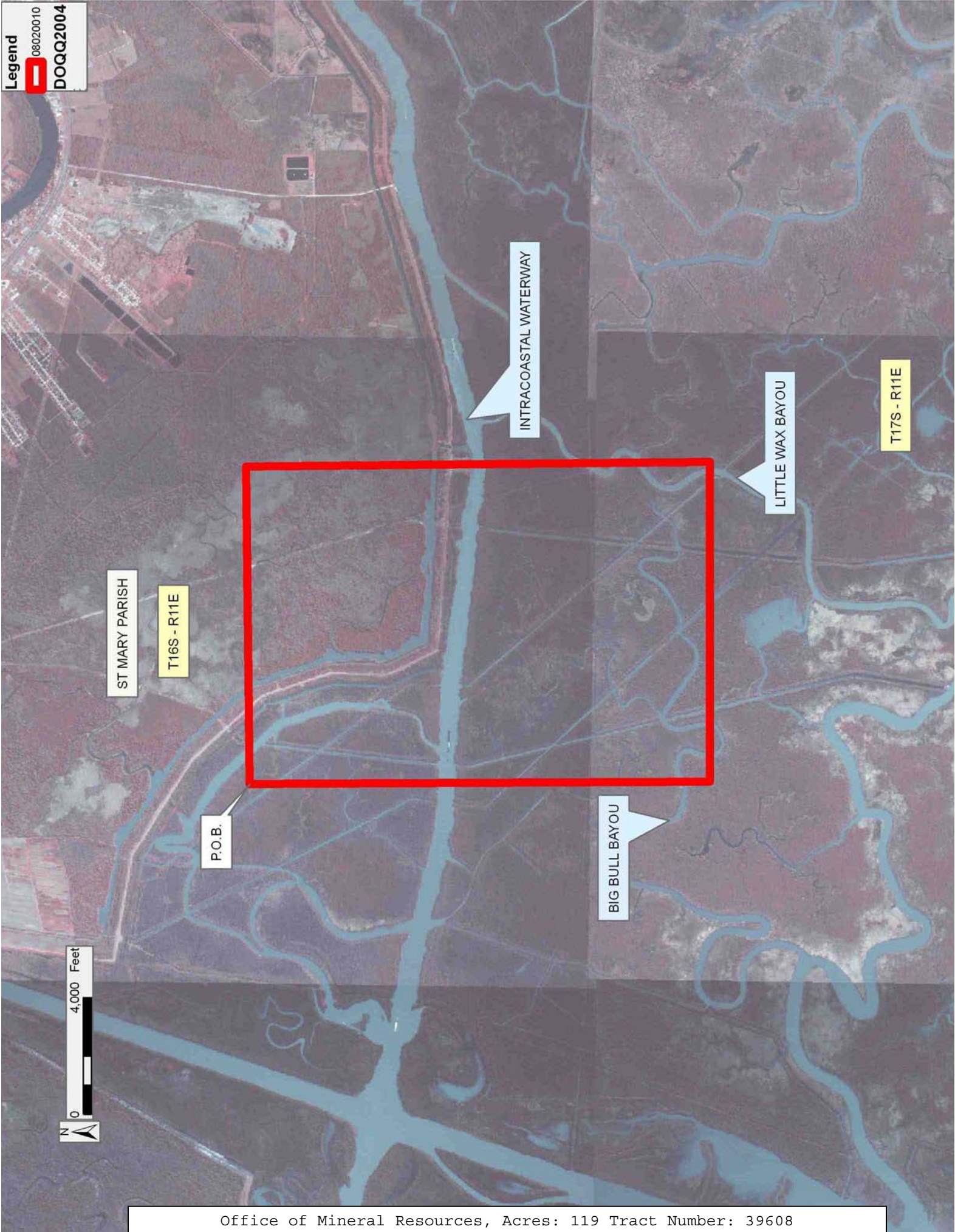
NOTE: The above description of the Tract nominated for lease has been provided and corrected, where required, exclusively by the nomination party. Any mineral lease selected from this Tract and awarded by the Louisiana State Mineral Board shall be without warranty of any kind, either express, implied, or statutory, including, but not limited to, the implied warranties of merchantability and fitness for a particular purpose. Should the mineral lease awarded by the Louisiana State Mineral Board be subsequently modified, cancelled or abrogated due to the existence of conflicting leases, operating agreements, private claims or other future obligations or conditions which may affect all or any portion of the leased Tract, it shall not relieve the Lessee of the obligation to pay any bonus due thereon to the Louisiana State Mineral Board, nor shall the Louisiana State Mineral Board be obligated to refund any consideration paid by the Lessor prior to such modification, cancellation, or abrogation, including, but not limited to, bonuses, rentals and royalties.

NOTE: The State of Louisiana does hereby reserve, and this lease shall be subject to, the imprescriptible right of surface use in the nature of a servitude in favor of the Department of Natural Resources, including its Offices and Commissions, for the sole purpose of implementing, constructing, servicing and maintaining approved coastal zone management and/or restoration projects. Utilization of any and all rights derived under this lease by the mineral lessee, its agents, successors or assigns, shall not interfere with nor hinder the reasonable surface use by the

Department of Natural Resources, its Offices or Commissions, as herein above reserved.

Applicant: FLEETWOOD RESOURCES, INC.

Bidder	Cash Payment	Price/Acre	Rental	Oil	Gas	Other



ST MARY PARISH

T16S - R11E

P.O.B.

INTRACOASTAL WATERWAY

LITTLE WAX BAYOU

T17S - R11E

BIG BULL BAYOU



TRACT 39609 - St. Mary Parish, Louisiana

All of the lands now or formerly constituting the beds and bottoms of all water bodies of every nature and description as to which title is vested in the State of Louisiana, together with all islands arising therein and other lands formed by accretion or by reliction, where allowed by law, excepting tax adjudicated lands, and not presently under mineral lease on February 13, 2008, situated in St. Mary Parish, Louisiana, and more particularly described as follows: Beginning at a point having Coordinates of X = 1,971,058.12 and Y = 361,260.21; thence South 00 degrees 16 minutes 50 seconds West 15,886.78 feet to a point having Coordinates of X = 1,970,980.30 and Y = 345,373.62; thence South 88 degrees 25 minutes 25 seconds West 2,675.97 feet to the Northeast corner of State Lease No. 19363 having Coordinates of X = 1,968,305.34 and Y = 345,300.00; thence West 8,015.34 feet along the North boundary of said State Lease No. 19363 to a point having Coordinates of X = 1,960,290.00 and Y = 345,300.00; thence North 00 degrees 40 minutes 25 seconds East 15,899.51 feet to a point having Coordinates of X = 1,960,476.93 and Y = 361,198.41; thence North 89 degrees 39 minutes 55 seconds East 10,581.37 feet to the point of beginning, **LESS AND EXCEPT** any right, title, and interest in lands owned by and not under lease from the State of Louisiana, on behalf of the St. Mary Parish School Board, situated in Section 16, Township 16 South, Range 10 East, St. Mary Parish, Louisiana, contained within the above described tract, containing approximately **99 acres**, all as more particularly outlined on a plat on file in the Office of Mineral Resources, Department of Natural Resources. All bearings, distances and coordinates are based on Louisiana Coordinate System of 1927, (North or South Zone), where applicable.

NOTE: The above description of the Tract nominated for lease has been provided and corrected, where required, exclusively by the nomination party. Any mineral lease selected from this Tract and awarded by the Louisiana State Mineral Board shall be without warranty of any kind, either express, implied, or statutory, including, but not limited to, the implied warranties of merchantability and fitness for a particular purpose. Should the mineral lease awarded by the Louisiana State Mineral Board be subsequently modified, cancelled or abrogated due to the existence of conflicting leases, operating agreements, private claims or other future obligations or conditions which may affect all or any portion of the leased Tract, it shall not relieve the Lessee of the obligation to pay any bonus due thereon to the Louisiana State Mineral Board, nor shall the Louisiana State Mineral Board be obligated to refund any consideration paid by the Lessor prior to such modification, cancellation, or abrogation, including, but not limited to, bonuses, rentals and royalties.

NOTE: The State of Louisiana does hereby reserve, and this lease shall be subject to, the imprescriptible right of surface use in the nature of a servitude in favor of the Department of Natural Resources, including its Offices and Commissions, for the sole purpose of implementing, constructing, servicing and maintaining approved coastal zone management

and/or restoration projects. Utilization of any and all rights derived under this lease by the mineral lessee, its agents, successors or assigns, shall not interfere with nor hinder the reasonable surface use by the Department of Natural Resources, its Offices or Commissions, as herein above reserved.

Applicant: FLEETWOOD RESOURCES, INC.

Bidder	Cash Payment	Price/Acre	Rental	Oil	Gas	Other

Legend
08020007
Active_Leases
DOQQ2004



TRACT 39610 - St. Mary Parish, Louisiana

All of the lands now or formerly constituting the beds and bottoms of all water bodies of every nature and description as to which title is vested in the State of Louisiana, together with all islands arising therein and other lands formed by accretion or by reliction, where allowed by law, excepting tax adjudicated lands, and not presently under mineral lease on February 13, 2008, situated in St. Mary Parish, Louisiana, and more particularly described as follows: Beginning at a point having Coordinates of X = 1,971,058.12 and Y = 361,260.21; thence North 89 degrees 43 minutes 11 seconds East 10,649.12 feet to a point having Coordinates of X = 1,981,707.11 and Y = 361,312.32; thence South 00 degrees 16 minutes 31 seconds West 15,788.83 feet to a point having Coordinates of X = 1,981,631.28 and Y = 345,523.67; thence South 89 degrees 11 minutes 34 seconds West 10,652.04 feet to a point having Coordinates of X = 1,970,980.30 and Y = 345,373.62; thence North 00 degrees 16 minutes 50 seconds East 15,886.78 feet to the point of beginning, containing approximately **1,120 acres**, all as more particularly outlined on a plat on file in the Office of Mineral Resources, Department of Natural Resources. All bearings, distances and coordinates are based on Louisiana Coordinate System of 1927, (North or South Zone), where applicable.

NOTE: The above description of the Tract nominated for lease has been provided and corrected, where required, exclusively by the nomination party. Any mineral lease selected from this Tract and awarded by the Louisiana State Mineral Board shall be without warranty of any kind, either express, implied, or statutory, including, but not limited to, the implied warranties of merchantability and fitness for a particular purpose. Should the mineral lease awarded by the Louisiana State Mineral Board be subsequently modified, cancelled or abrogated due to the existence of conflicting leases, operating agreements, private claims or other future obligations or conditions which may affect all or any portion of the leased Tract, it shall not relieve the Lessee of the obligation to pay any bonus due thereon to the Louisiana State Mineral Board, nor shall the Louisiana State Mineral Board be obligated to refund any consideration paid by the Lessor prior to such modification, cancellation, or abrogation, including, but not limited to, bonuses, rentals and royalties.

NOTE: The State of Louisiana does hereby reserve, and this lease shall be subject to, the imprescriptible right of surface use in the nature of a servitude in favor of the Department of Natural Resources, including its Offices and Commissions, for the sole purpose of implementing, constructing, servicing and maintaining approved coastal zone management and/or restoration projects. Utilization of any and all rights derived under this lease by the mineral lessee, its agents, successors or assigns, shall not interfere with nor hinder the reasonable surface use by the Department of Natural Resources, its Offices or Commissions, as herein above reserved.

Applicant: FLEETWOOD RESOURCES, INC.

Bidder	Cash Payment	Price/Acre	Rental	Oil	Gas	Other

Legend
08020008
DOQQ2004

T16S - R11E

POSSUM POINT BAYOU

ST MARY PARISH

T16S - R10E

WAX LAKE

P.O.B.

INTRACOASTAL WATERWAY

