

TRACT 38897 - Portion of Block 7, Eugene Island Area, Revised, Iberia Parish, Louisiana

All of the lands now or formerly constituting the beds and bottoms of all water bodies of every nature and description the title of which vests in the State of Louisiana, together with all islands arising therein and other lands formed by accretion or by reliction, where allowed by law, excepting tax adjudicated lands, and not presently under mineral lease on February 14, 2007, situated in Iberia Parish, Louisiana, and more particularly described as follows: Beginning at the Northwest corner of Block 7, Eugene Island Area, Revised, having Coordinates of X = 1,849,778.40 and Y = 284,391.16; thence East 12,036.06 feet along the North line of said Block 7 to a point having Coordinates of X = 1,861,814.46 and Y = 284,391.16; thence South 4,123.61 feet to a point on the North boundary of State Lease No. 19153 having Coordinates of X = 1,861,814.46 and Y = 280,267.55; thence along the boundary of said State Lease No. 19153 the following courses: West 1,180.55 feet to a point having Coordinates of X = 1,860,633.91 and Y = 280,267.55; South 2,290.98 feet to a point having Coordinates of X = 1,860,633.91 and Y = 277,976.57 and East 1,180.55 feet to a point having Coordinates of X = 1,861,814.46 and Y = 277,976.57; thence South 1,083.54 feet to a point on the Louisiana Coastline, as decreed by the Supreme Court of the United States, as determined by a Special Master appointed therein, in litigation styled *United States v. State of Louisiana et al No. 9 Original*, in 1975, having Coordinates of X = 1,861,814.46 and Y = 276,893.03; thence Southwesterly, along a straight line, along said Louisiana Coastline to a point on the West line of said Block 7 having Coordinates of X = 1,849,778.40 and Y = 276,249.47; thence North 8,141.69 feet to the point of beginning; containing approximately **2,098.63 acres**, all as more particularly outlined on a plat on file in the Office of Mineral Resources, Department of Natural Resources. All bearings, distances and coordinates are based on Louisiana Coordinate System of 1927, (North or South Zone), where applicable.

NOTE: The above description of the Tract nominated for lease has been provided and corrected, where required, exclusively by the nomination party. Any mineral lease selected from this Tract and awarded by the Louisiana State Mineral Board shall be without warranty of any kind, either express, implied, or statutory, including, but not limited to, the implied warranties of merchantability and fitness for a particular purpose. Should the mineral lease awarded by the Louisiana State Mineral Board be subsequently modified, cancelled or abrogated due to the existence of conflicting leases, operating agreements, private claims or other future obligations or conditions which may affect all or any portion of the leased Tract, it shall not relieve the Lessee of the obligation to pay any bonus due thereon to the Louisiana State Mineral Board, nor shall the Louisiana State Mineral Board be obligated to refund any consideration paid by the Lessor prior to such modification, cancellation, or abrogation, including, but not limited to, bonuses, rentals and royalties.

NOTE: The Office of Mineral Resources will require a minimum bonus of \$300 per acre and a minimum royalty of 25%.

NOTE: The State of Louisiana does hereby reserve, and this lease shall be subject to, the imprescriptible right of surface use in the nature of a servitude in favor of the Department of Natural Resources, including its Offices and Commissions, for the sole purpose of implementing, constructing, servicing and maintaining approved coastal zone management and/or restoration projects. Utilization of any and all rights derived under this lease by the mineral lessee, its agents, successors or assigns, shall not interfere with nor hinder the reasonable surface use by the Department of Natural Resources, its Offices or Commissions, as herein above reserved.

NOTE: The Department of Wildlife and Fisheries has designated certain areas in the coastal waters of the State of Louisiana as Oyster Seed Bed Areas. The exact location of those Seed Bed Areas must be obtained from the Department of Wildlife and Fisheries and any work done under a mineral lease from the State of Louisiana may necessarily be conducted in conformity with the rules and regulations promulgated by the said Department of Wildlife and Fisheries for Oyster Seed Bed Areas.

Applicant: CYPRESS ENERGY CORPORATION

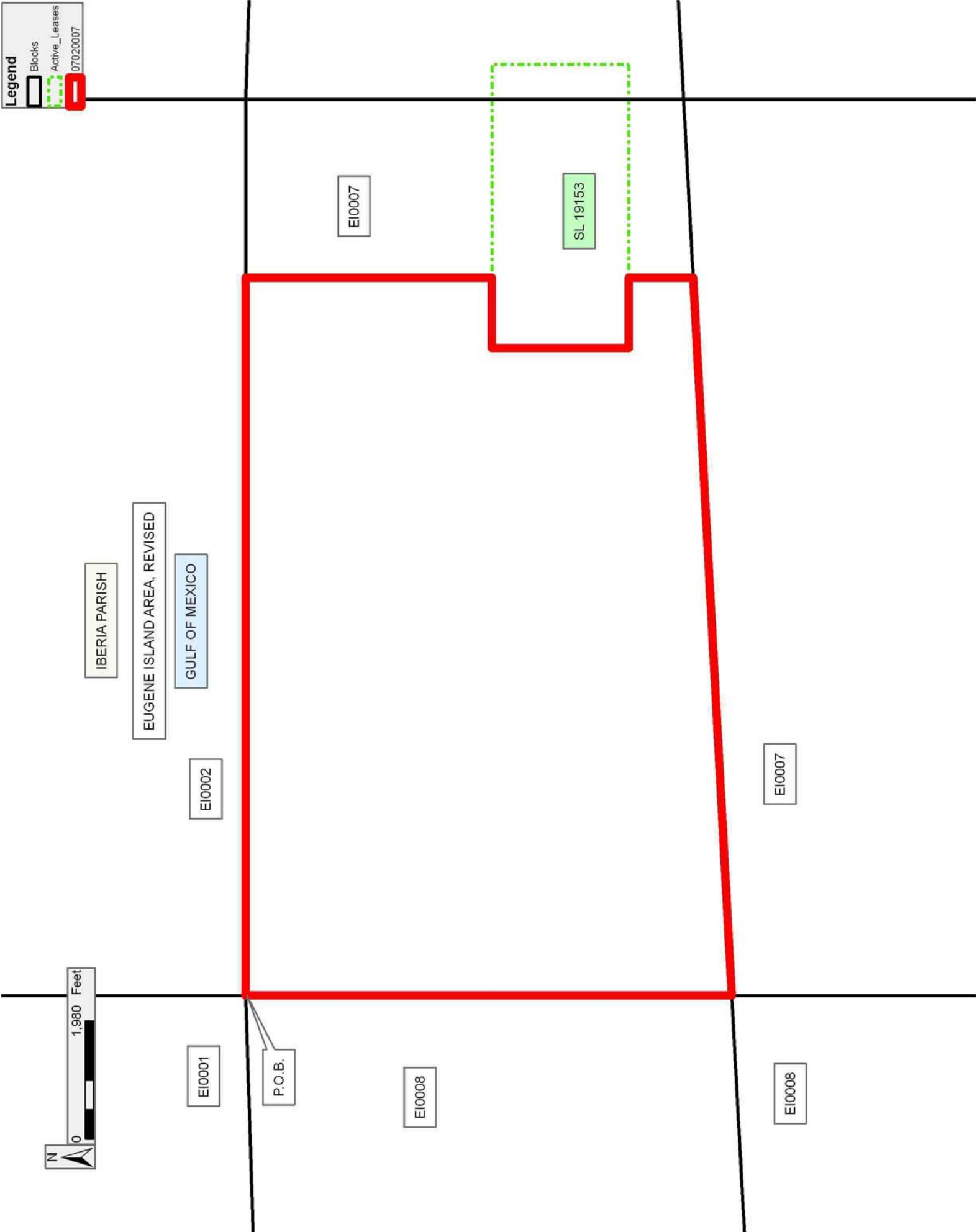
Bidder	Cash Payment	Price/ Acre	Rental	Oil	Gas	Other

Legend

Blocks

Active_Leases

07020007



TRACT 38898 - Portion of Blocks 6, and 7, Eugene Island Area, Revised, Iberia Parish, Louisiana

All of the lands now or formerly constituting the beds and bottoms of all water bodies of every nature and description the title of which vests in the State of Louisiana, together with all islands arising therein and other lands formed by accretion or by reliction, where allowed by law, excepting tax adjudicated lands, and not presently under mineral lease on February 14, 2007, situated in Iberia Parish, Louisiana, and more particularly described as follows: Beginning at a point on the North line of Block 7, Eugene Island Area, Revised, having Coordinates of X = 1,861,814.46 and Y = 284,391.16; thence East 10,603.54 feet to a point on the North line of Block 6, Eugene Island Area, Revised, having Coordinates of X = 1,872,418.00 and Y = 284,391.16; thence South 6,931.16 feet to a point on the Louisiana Coastline, as decreed by the Supreme Court of the United States, as determined by a Special Master appointed therein, in litigation styled *United States v. State of Louisiana et al No. 9 Original*, in 1975, having Coordinates of X = 1,872,418 and Y = 277,460; thence Southwesterly, along a straight line, along said Louisiana Coastline to a point having Coordinates of X = 1,861,814.46 and Y = 276,893.05; thence North 1,083.52 feet to a point on the South boundary of State Lease No. 19153 having Coordinates of X = 1,861,814.46 and Y = 277,976.57; thence along the boundary of said State Lease No. 19153 the following courses: East 3,572.87 feet to a point having Coordinates of X = 1,865,387.33 and Y = 277,976.57; North 2,290.98 feet to a point having Coordinates of X = 1,865,387.33 and Y = 280,267.55 and West 3,572.87 feet to a point having Coordinates of X = 1,861,814.46 and Y = 280,267.55; thence North 4,123.61 feet to the point of beginning; containing approximately **1,568.30 acres**, all as more particularly outlined on a plat on file in the Office of Mineral Resources, Department of Natural Resources. All bearings, distances and coordinates are based on Louisiana Coordinate System of 1927, (North or South Zone), where applicable.

NOTE: The above description of the Tract nominated for lease has been provided and corrected, where required, exclusively by the nomination party. Any mineral lease selected from this Tract and awarded by the Louisiana State Mineral Board shall be without warranty of any kind, either express, implied, or statutory, including, but not limited to, the implied warranties of merchantability and fitness for a particular purpose. Should the mineral lease awarded by the Louisiana State Mineral Board be subsequently modified, cancelled or abrogated due to the existence of conflicting leases, operating agreements, private claims or other future obligations or conditions which may affect all or any portion of the leased Tract, it shall not relieve the Lessee of the obligation to pay any bonus due thereon to the Louisiana State Mineral Board, nor shall the Louisiana State Mineral Board be obligated to refund any consideration paid by the Lessor prior to such modification, cancellation, or abrogation, including, but not limited to, bonuses, rentals and royalties.

NOTE: The Office of Mineral Resources will require a minimum bonus of \$300 per acre and a minimum royalty of 25%.

NOTE: The above described tract may be in the vicinity of existing shell reefs where drilling and dredging operations must be conducted in strict conformity with the regulations adopted by the Louisiana Department of Wildlife and Fisheries and/or the U.S. Corps of Engineers, U.S. Army.

NOTE: The State of Louisiana does hereby reserve, and this lease shall be subject to, the imprescriptible right of surface use in the nature of a servitude in favor of the Department of Natural Resources, including its Offices and Commissions, for the sole purpose of implementing, constructing, servicing and maintaining approved coastal zone management and/or restoration projects. Utilization of any and all rights derived under this lease by the mineral lessee, its agents, successors or assigns, shall not interfere with nor hinder the reasonable surface use by the Department of Natural Resources, its Offices or Commissions, as herein above reserved.

NOTE: The Department of Wildlife and Fisheries has designated certain areas in the coastal waters of the State of Louisiana as Oyster Seed Bed Areas. The exact location of those Seed Bed Areas must be obtained from the Department of Wildlife and Fisheries and any work done under a mineral lease from the State of Louisiana may necessarily be conducted in conformity with the rules and regulations promulgated by the said Department of Wildlife and Fisheries for Oyster Seed Bed Areas.

Applicant: BARKER ENERGY

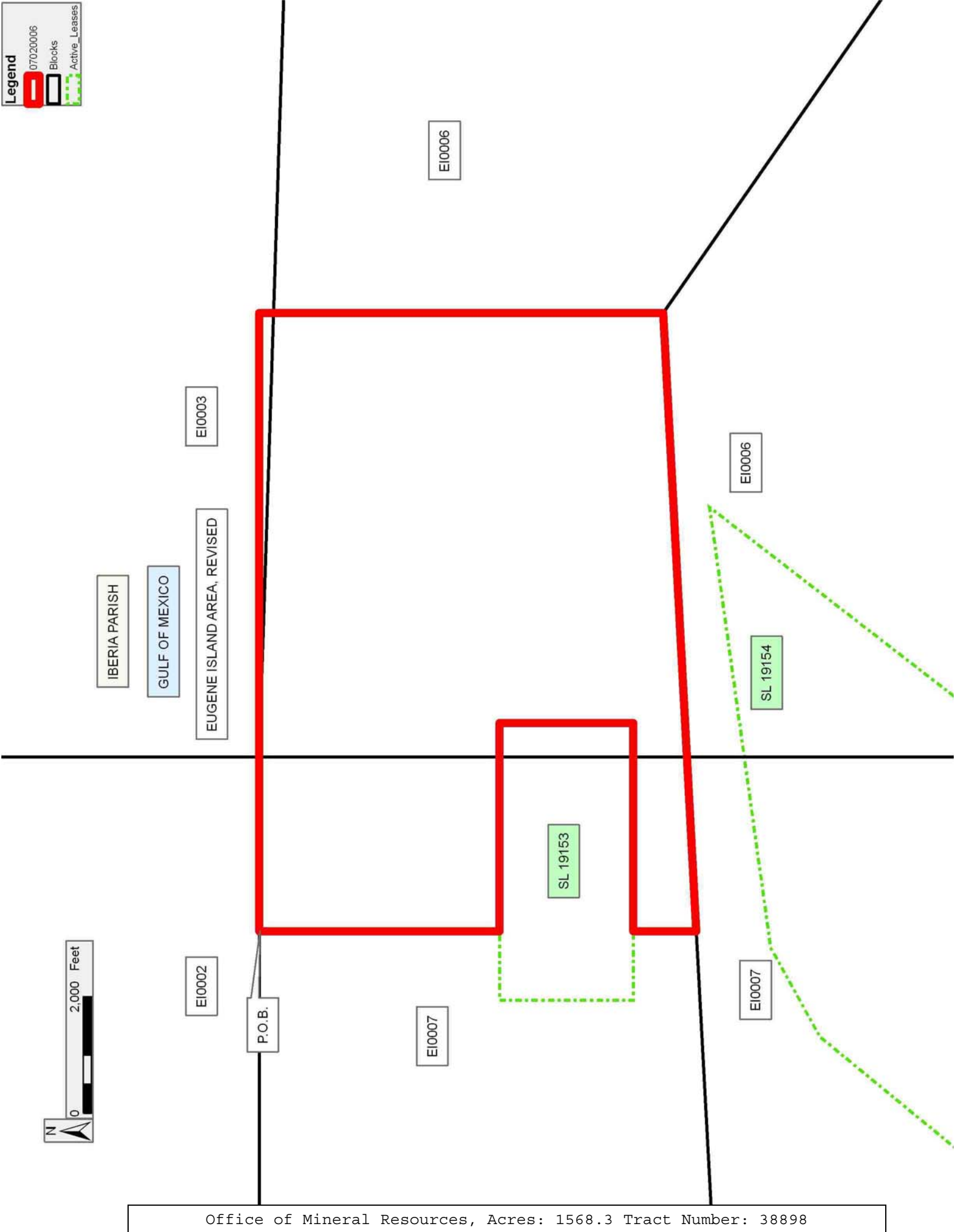
Bidder	Cash Payment	Price/ Acre	Rental	Oil	Gas	Other

Legend

07020006

Blocks

Active_Leases



TRACT 38899 - Portion of Block 6, Eugene Island Area, Revised, Iberia Parish, Louisiana

All of the lands now or formerly constituting the beds and bottoms of all water bodies of every nature and description the title of which vests in the State of Louisiana, together with all islands arising therein and other lands formed by accretion or by reliction, where allowed by law, excepting tax adjudicated lands, and not presently under mineral lease on February 14, 2007, situated in Iberia Parish, Louisiana, and more particularly described as follows: Beginning at a point on the North line of Block 6, Eugene Island Area, Revised, having Coordinates of X = 1,872,418.00 and Y = 284,391.16; thence East 7,404.72 feet along the North line of said Block 6 to its Northeast corner having Coordinates of X = 1,879,822.72 and Y = 284,391.16; thence South 486.10 feet along the East line of said Block 6 to the Northwest corner of State Lease No. 18083 having Coordinates of X = 1,879,822.72 and Y = 283,905.06; thence continue South 5,650.00 feet along the West boundary of said State Lease No. 18083 to its Southwest corner having Coordinates of X = 1,879,822.72 and Y = 278,255.06; thence continue South 5,939.72 feet along the East line of said Block 6 to a point on the Louisiana Coastline, as decreed by the Supreme Court of the United States, as determined by a Special Master appointed therein, in litigation styled *United States v. State of Louisiana et al No. 9 Original*, in 1975, having Coordinates of X = 1,879,822.72 and Y = 272,315.34; thence Northwesterly, along a straight line, along said Louisiana Coastline to a point having Coordinates of X = 1,872,418 and Y = 277,460; thence North 6,931.16 feet to the point of beginning; containing approximately **1,615.49 acres**, all as more particularly outlined on a plat on file in the Office of Mineral Resources, Department of Natural Resources. All bearings, distances and coordinates are based on Louisiana Coordinate System of 1927, (North or South Zone), where applicable.

NOTE: The above description of the Tract nominated for lease has been provided and corrected, where required, exclusively by the nomination party. Any mineral lease selected from this Tract and awarded by the Louisiana State Mineral Board shall be without warranty of any kind, either express, implied, or statutory, including, but not limited to, the implied warranties of merchantability and fitness for a particular purpose. Should the mineral lease awarded by the Louisiana State Mineral Board be subsequently modified, cancelled or abrogated due to the existence of conflicting leases, operating agreements, private claims or other future obligations or conditions which may affect all or any portion of the leased Tract, it shall not relieve the Lessee of the obligation to pay any bonus due thereon to the Louisiana State Mineral Board, nor shall the Louisiana State Mineral Board be obligated to refund any consideration paid by the Lessor prior to such modification, cancellation, or abrogation, including, but not limited to, bonuses, rentals and royalties.

NOTE: The Office of Mineral Resources will require a minimum bonus of \$300 per acre and a minimum royalty of 25%.

NOTE: The above described tract may be in the vicinity of existing shell reefs where drilling and dredging operations must be conducted in strict conformity with the regulations adopted by the Louisiana Department of Wildlife and Fisheries and/or the U.S. Corps of Engineers, U.S. Army.

NOTE: The State of Louisiana does hereby reserve, and this lease shall be subject to, the imprescriptible right of surface use in the nature of a servitude in favor of the Department of Natural Resources, including its Offices and Commissions, for the sole purpose of implementing, constructing, servicing and maintaining approved coastal zone management and/or restoration projects. Utilization of any and all rights derived under this lease by the mineral lessee, its agents, successors or assigns, shall not interfere with nor hinder the reasonable surface use by the Department of Natural Resources, its Offices or Commissions, as herein above reserved.

NOTE: The Department of Wildlife and Fisheries has designated certain areas in the coastal waters of the State of Louisiana as Oyster Seed Bed Areas. The exact location of those Seed Bed Areas must be obtained from the Department of Wildlife and Fisheries and any work done under a mineral lease from the State of Louisiana may necessarily be conducted in conformity with the rules and regulations promulgated by the said Department of Wildlife and Fisheries for Oyster Seed Bed Areas.

Applicant: BARKER ENERGY

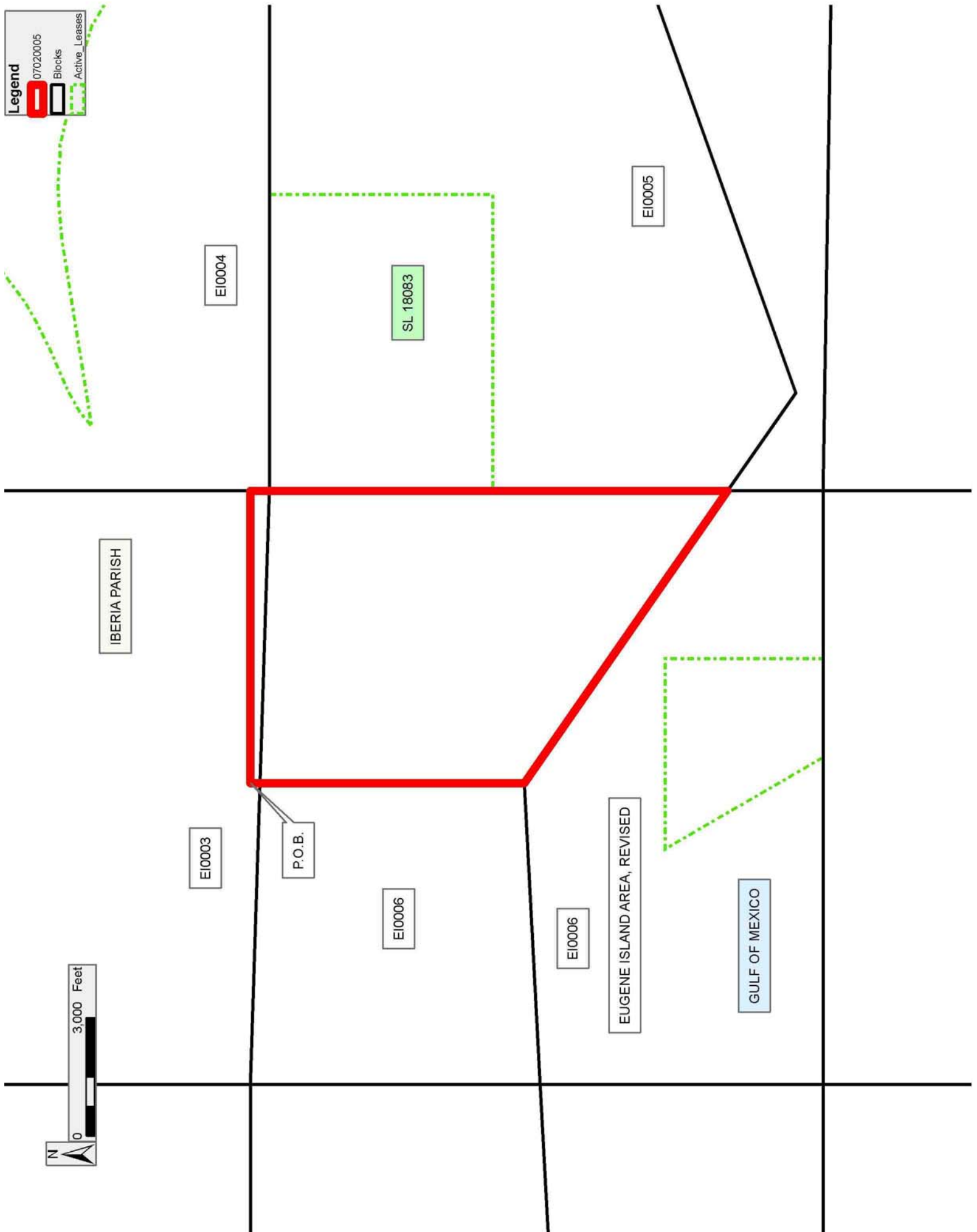
Bidder	Cash Payment	Price/ Acre	Rental	Oil	Gas	Other

Legend

07020005

Blocks

Active Leases



TRACT 38900 - Portion of Block 5, Eugene Island Area, Revised, Iberia Parish, Louisiana

All of the lands now or formerly constituting the beds and bottoms of all water bodies of every nature and description the title of which vests in the State of Louisiana, together with all islands arising therein and other lands formed by accretion or by reliction, where allowed by law, excepting tax adjudicated lands, and not presently under mineral lease on February 14, 2007, situated in Iberia Parish, Louisiana, and more particularly described as follows: Beginning at the Northeast corner of State Lease No. 18083, also being a point on the North line of Block 5, Eugene Island Area, Revised, having Coordinates of X = 1,887,322.72 and Y = 283,905.06; thence East 7,778.28 feet along the North line of said Block 5 to its Northeast corner having Coordinates of X = 1,895,101.00 and Y = 283,905.06; thence South 5,650.00 feet along the East line of said Block 5 to a point having Coordinates of X = 1,895,101.00 and Y = 278,255.06; thence West 7,778.28 feet to the Southeast corner of said State Lease No. 18083 having Coordinates of X = 1,887,322.72 and Y = 278,255.06; thence North 5,650.00 feet along the East boundary of said State Lease No. 18083 to the point of beginning; **LESS AND EXCEPT** that portion, if any, of State Lease No. 340, as amended, which may lie within the above described tract, containing approximately **1,008.89 acres**, all as more particularly outlined on a plat on file in the Office of Mineral Resources, Department of Natural Resources. All bearings, distances and coordinates are based on Louisiana Coordinate System of 1927, (North or South Zone), where applicable.

NOTE: The above description of the Tract nominated for lease has been provided and corrected, where required, exclusively by the nomination party. Any mineral lease selected from this Tract and awarded by the Louisiana State Mineral Board shall be without warranty of any kind, either express, implied, or statutory, including, but not limited to, the implied warranties of merchantability and fitness for a particular purpose. Should the mineral lease awarded by the Louisiana State Mineral Board be subsequently modified, cancelled or abrogated due to the existence of conflicting leases, operating agreements, private claims or other future obligations or conditions which may affect all or any portion of the leased Tract, it shall not relieve the Lessee of the obligation to pay any bonus due thereon to the Louisiana State Mineral Board, nor shall the Louisiana State Mineral Board be obligated to refund any consideration paid by the Lessor prior to such modification, cancellation, or abrogation, including, but not limited to, bonuses, rentals and royalties.

NOTE: The Office of Mineral Resources will require a minimum bonus of \$300 per acre and a minimum royalty of 25%.

NOTE: The above described tract may be in the vicinity of existing shell reefs where drilling and dredging operations must be conducted in strict conformity with the regulations adopted by the Louisiana Department of Wildlife and Fisheries and/or the U.S. Corps of Engineers, U.S. Army.

NOTE: The State of Louisiana does hereby reserve, and this lease shall be subject to, the imprescriptible right of surface use in the nature of a servitude in favor of the Department of Natural Resources, including its Offices and Commissions, for the sole purpose of implementing, constructing, servicing and maintaining approved coastal zone management and/or restoration projects. Utilization of any and all rights derived under this lease by the mineral lessee, its agents, successors or assigns, shall not interfere with nor hinder the reasonable surface use by the Department of Natural Resources, its Offices or Commissions, as herein above reserved.

NOTE: The Department of Wildlife and Fisheries has designated certain areas in the coastal waters of the State of Louisiana as Oyster Seed Bed Areas. The exact location of those Seed Bed Areas must be obtained from the Department of Wildlife and Fisheries and any work done under a mineral lease from the State of Louisiana may necessarily be conducted in conformity with the rules and regulations promulgated by the said Department of Wildlife and Fisheries for Oyster Seed Bed Areas.

Applicant: CYPRESS ENERGY CORPORATION

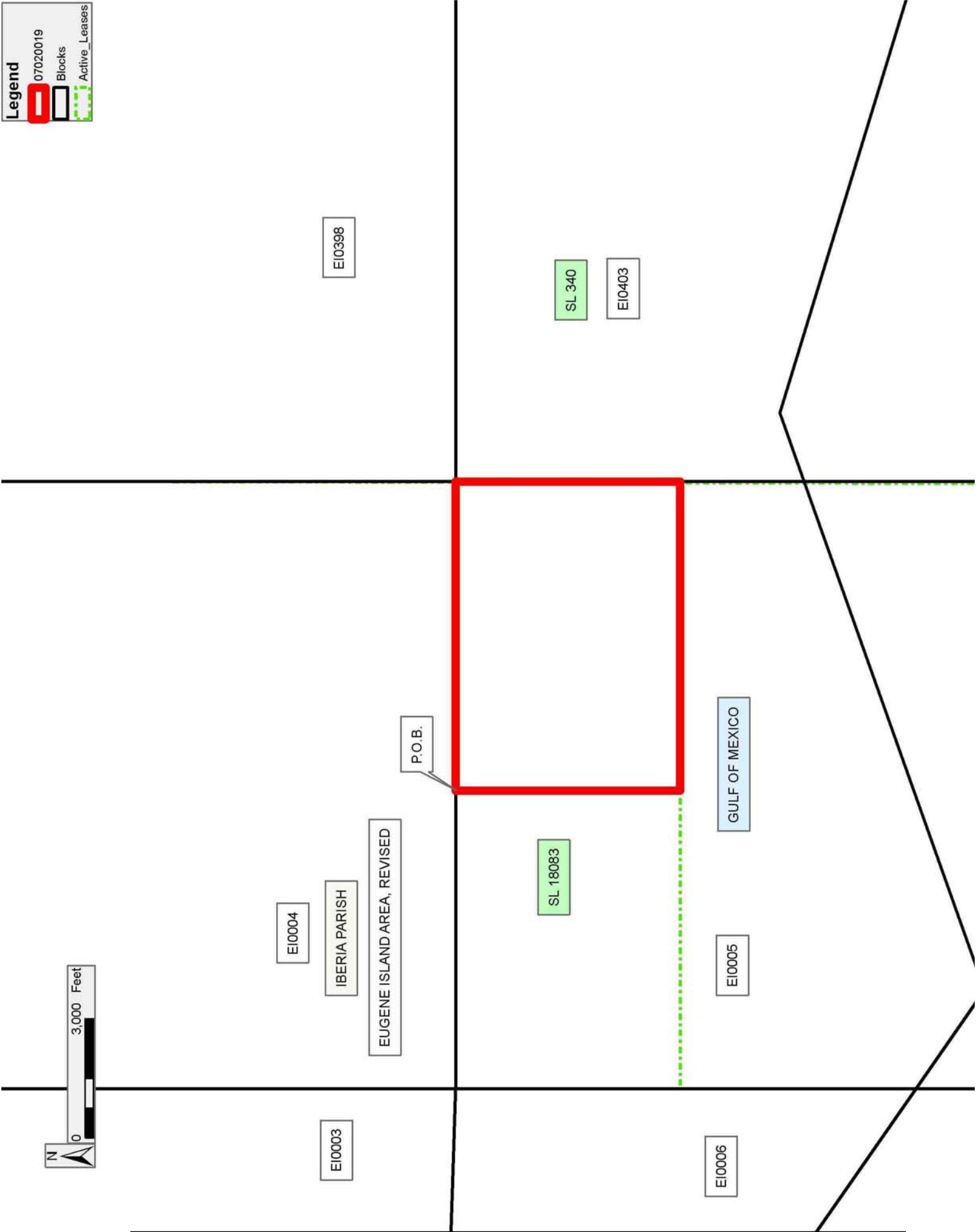
Bidder	Cash Payment	Price/ Acre	Rental	Oil	Gas	Other

Legend

07020019

Blocks

Active_Leases



TRACT 38901 - Portion of Block 8, Eugene Island Area, Revised, Iberia Parish, Louisiana

All of the lands now or formerly constituting the beds and bottoms of all water bodies of every nature and description the title of which vests in the State of Louisiana, together with all islands arising therein and other lands formed by accretion or by reliction, where allowed by law, excepting tax adjudicated lands, and not presently under mineral lease on February 14, 2007, situated in Iberia Parish, Louisiana, and more particularly described as follows: Beginning at a point on the East boundary of State Lease No. 19150, also being a point on the North line of Block 8, Eugene Island Area, Revised, having Coordinates of X = 1,845,278.73 and Y = 283,920.39; thence East 4,499.67 feet along the North line of said Block 8 to its Northeast corner having Coordinates of X = 1,849,778.40 and Y = 283,920.39; thence South 7,670.92 feet along the East line of said Block 8 to a point on the Louisiana Coastline, as decreed by the Supreme Court of the United States, as determined by a Special Master appointed therein, in litigation styled *United States v. State of Louisiana et al No. 9 Original*, in 1975, having Coordinates of X = 1,849,778.40 and Y = 276,249.47; thence along said Louisiana Coastline the following courses: Southwesterly to a point having Coordinates of X = 1,843,467 and Y = 275,912 and Southwesterly to the Southeast corner of State Lease No. 19151 having Coordinates of X = 1,843,318.00 and Y = 275,818.95; thence along the boundary of said State Lease No. 19151 the following courses: North 08 degrees 23 minutes 23 seconds West 2,674.67 feet to a point having Coordinates of X = 1,842,927.75 and Y = 278,465.00; North 04 degrees 18 minutes 32 seconds East 2,625.42 feet to a point having Coordinates of X = 1,843,125.00 and Y = 281,083.00 and North 60 degrees 49 minutes 02 seconds East 1,716.24 feet to its Northeast corner, also being the Southeast corner of said State Lease No. 19150 having Coordinates of X = 1,844,623.40 and Y = 281,919.83; thence North 18 degrees 08 minutes 15 seconds East 2,105.16 feet to the point of beginning; containing approximately **1,107.13 acres**, all as more particularly outlined on a plat on file in the Office of Mineral Resources, Department of Natural Resources. All bearings, distances and coordinates are based on Louisiana Coordinate System of 1927, (North or South Zone), where applicable.

NOTE: The above description of the Tract nominated for lease has been provided and corrected, where required, exclusively by the nomination party. Any mineral lease selected from this Tract and awarded by the Louisiana State Mineral Board shall be without warranty of any kind, either express, implied, or statutory, including, but not limited to, the implied warranties of merchantability and fitness for a particular purpose. Should the mineral lease awarded by the Louisiana State Mineral Board be subsequently modified, cancelled or abrogated due to the existence of conflicting leases, operating agreements, private claims or other future obligations or conditions which may affect all or any portion of the leased Tract, it shall not relieve the Lessee of the obligation to pay any bonus due thereon to the Louisiana State Mineral Board, nor shall

the Louisiana State Mineral Board be obligated to refund any consideration paid by the Lessor prior to such modification, cancellation, or abrogation, including, but not limited to, bonuses, rentals and royalties.

NOTE: The Office of Mineral Resources will require a minimum bonus of \$300 per acre and a minimum royalty of 25%.

NOTE: The State of Louisiana does hereby reserve, and this lease shall be subject to, the imprescriptible right of surface use in the nature of a servitude in favor of the Department of Natural Resources, including its Offices and Commissions, for the sole purpose of implementing, constructing, servicing and maintaining approved coastal zone management and/or restoration projects. Utilization of any and all rights derived under this lease by the mineral lessee, its agents, successors or assigns, shall not interfere with nor hinder the reasonable surface use by the Department of Natural Resources, its Offices or Commissions, as herein above reserved.

NOTE: The Department of Wildlife and Fisheries has designated certain areas in the coastal waters of the State of Louisiana as Oyster Seed Bed Areas. The exact location of those Seed Bed Areas must be obtained from the Department of Wildlife and Fisheries and any work done under a mineral lease from the State of Louisiana may necessarily be conducted in conformity with the rules and regulations promulgated by the said Department of Wildlife and Fisheries for Oyster Seed Bed Areas.

Applicant: CYPRESS ENERGY CORPORATION

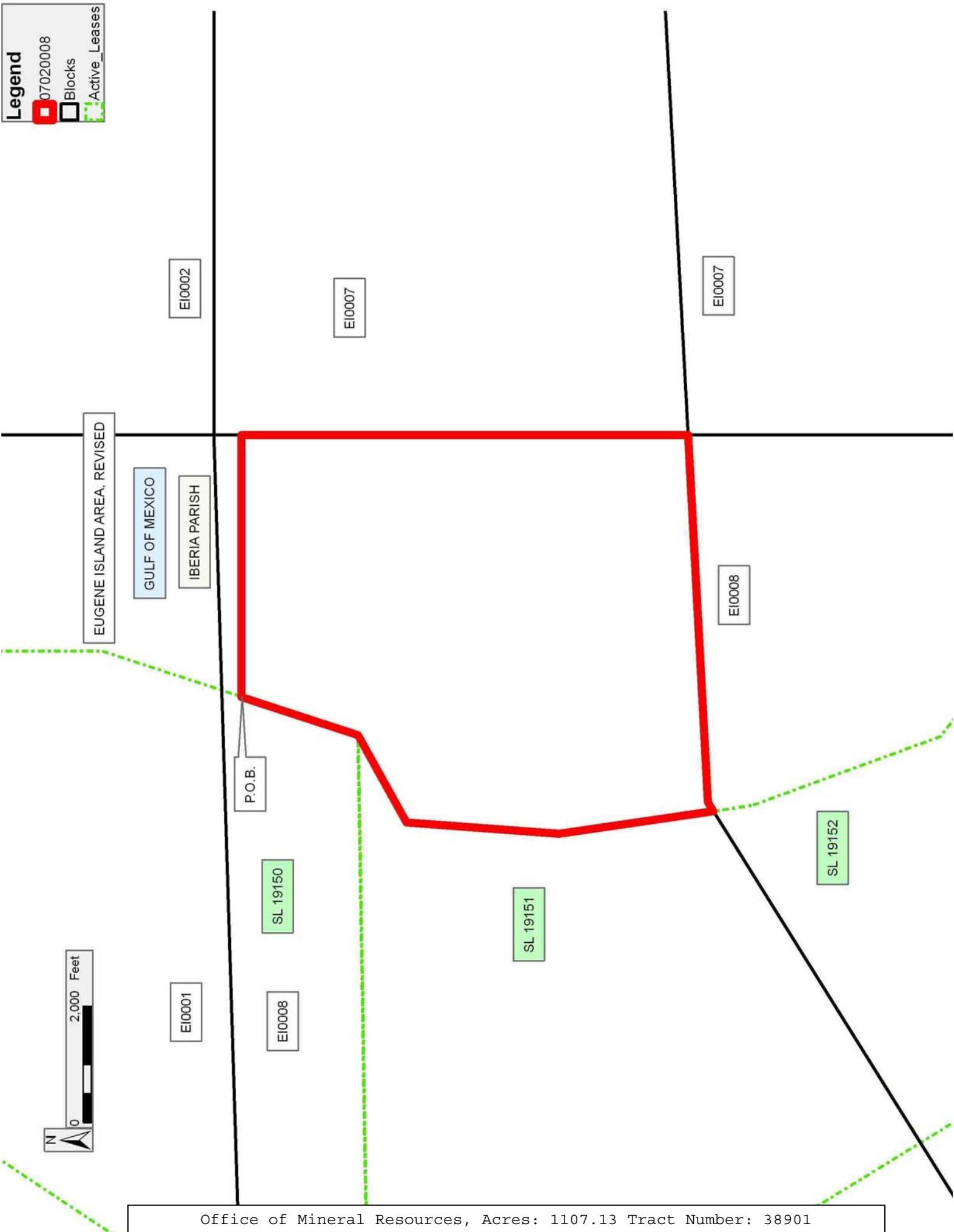
Bidder	Cash Payment	Price/ Acre	Rental	Oil	Gas	Other

Legend

07020008

Blocks

Active_Leases



TRACT 38902 - Portion of Block 8, Eugene Island Area, Revised, Iberia Parish, Louisiana

All of the lands now or formerly constituting the beds and bottoms of all water bodies of every nature and description the title of which vests in the State of Louisiana, together with all islands arising therein and other lands formed by accretion or by reliction, where allowed by law, excepting tax adjudicated lands, and not presently under mineral lease on February 14, 2007, situated in Iberia Parish, Louisiana, and more particularly described as follows: Beginning at a point on the West line of Block 8, Eugene Island Area, Revised, also being a point on the West boundary of State Lease No. 19151 having Coordinates of X = 1,834,542.83 and Y = 277,278.22; thence South 31 degrees 31 minutes 36 seconds East 5,886.19 feet along the West boundary of said State Lease No. 19151 to its Southwest corner, also being a point on the Louisiana Coastline, as decreed by the Supreme Court of the United States, as determined by a Special Master appointed therein, in litigation styled *United States v. State of Louisiana et al No. 9 Original*, in 1975, having Coordinates of X = 1,837,620.69 and Y = 272,260.85; thence along said Louisiana Coastline the following courses: Southwesterly along a straight line to a point having Coordinates of X = 1,835,344 and Y = 270,839 and Southwesterly along a straight line to a point on the West line of said Block 8 having Coordinates of X = 1,834,512.11 and Y = 270,501.22; thence North 00 degrees 15 minutes 35 seconds East 6,777.07 feet along the West line of said Block 8 to the point of beginning; containing approximately **245.94 acres**, all as more particularly outlined on a plat on file in the Office of Mineral Resources, Department of Natural Resources. All bearings, distances and coordinates are based on Louisiana Coordinate System of 1927, (North or South Zone), where applicable.

NOTE: The above description of the Tract nominated for lease has been provided and corrected, where required, exclusively by the nomination party. Any mineral lease selected from this Tract and awarded by the Louisiana State Mineral Board shall be without warranty of any kind, either express, implied, or statutory, including, but not limited to, the implied warranties of merchantability and fitness for a particular purpose. Should the mineral lease awarded by the Louisiana State Mineral Board be subsequently modified, cancelled or abrogated due to the existence of conflicting leases, operating agreements, private claims or other future obligations or conditions which may affect all or any portion of the leased Tract, it shall not relieve the Lessee of the obligation to pay any bonus due thereon to the Louisiana State Mineral Board, nor shall the Louisiana State Mineral Board be obligated to refund any consideration paid by the Lessor prior to such modification, cancellation, or abrogation, including, but not limited to, bonuses, rentals and royalties.

NOTE: The Office of Mineral Resources will require a minimum bonus of \$300 per acre and a minimum royalty of 25%.

NOTE: The State of Louisiana does hereby reserve, and this lease shall be subject to, the imprescriptible right of surface use in the nature of a servitude in favor of the Department of Natural Resources, including its Offices and Commissions, for the sole purpose of implementing, constructing, servicing and maintaining approved coastal zone management and/or restoration projects. Utilization of any and all rights derived under this lease by the mineral lessee, its agents, successors or assigns, shall not interfere with nor hinder the reasonable surface use by the Department of Natural Resources, its Offices or Commissions, as herein above reserved.

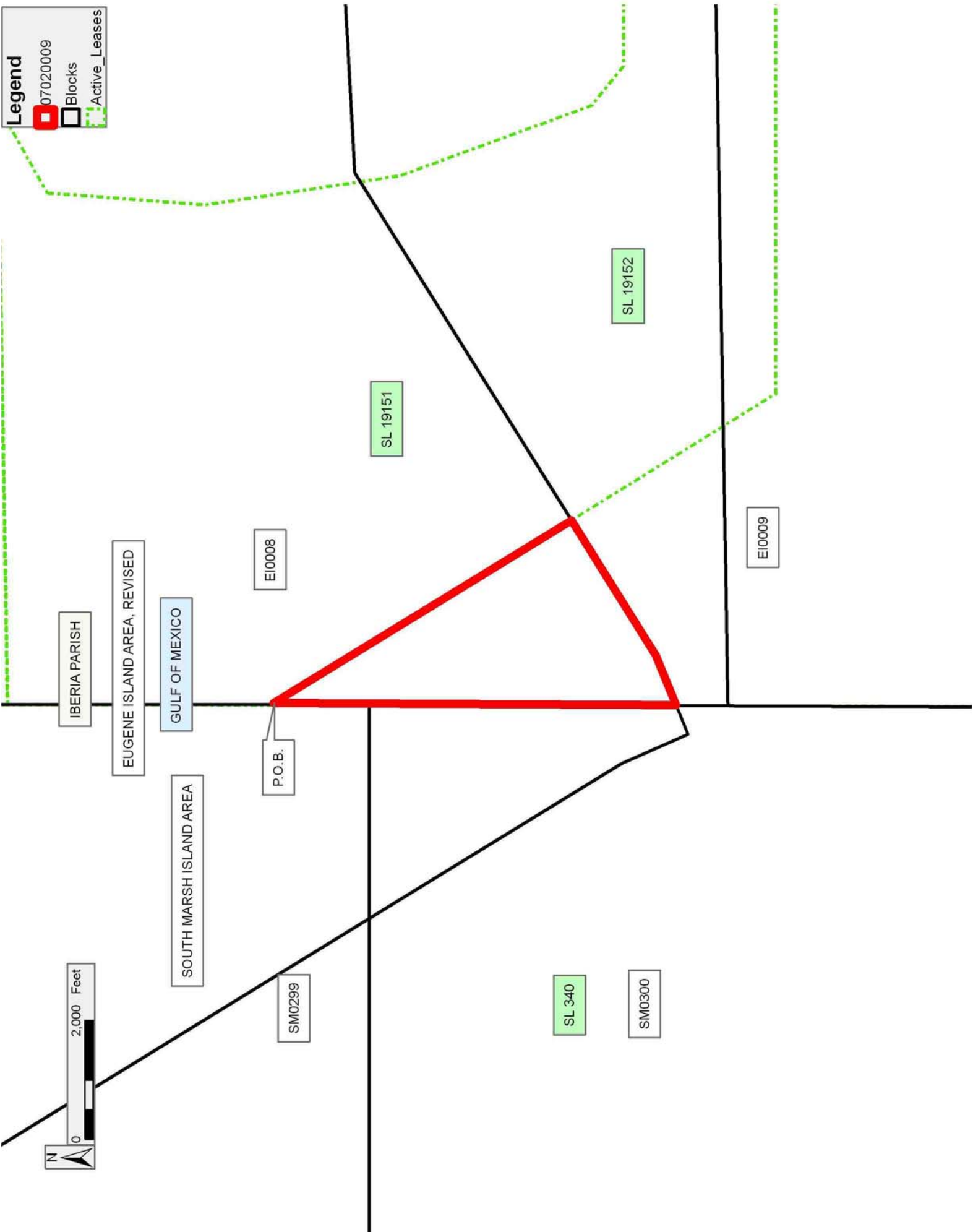
NOTE: The Department of Wildlife and Fisheries has designated certain areas in the coastal waters of the State of Louisiana as Oyster Seed Bed Areas. The exact location of those Seed Bed Areas must be obtained from the Department of Wildlife and Fisheries and any work done under a mineral lease from the State of Louisiana may necessarily be conducted in conformity with the rules and regulations promulgated by the said Department of Wildlife and Fisheries for Oyster Seed Bed Areas.

Applicant: CYPRESS ENERGY CORPORATION

Bidder	Cash Payment	Price/ Acre	Rental	Oil	Gas	Other

Legend

- 07020009
- Blocks
- Active_Leases



TRACT 38903 - Terrebonne Parish, Louisiana

All of the lands now or formerly constituting the beds and bottoms of all water bodies of every nature and description the title of which vests in the State of Louisiana, together with all islands arising therein and other lands formed by accretion or by reliction, where allowed by law, excepting tax adjudicated lands, and not presently under mineral lease on February 14, 2007, situated in Terrebonne Parish, Louisiana, and more particularly described as follows: Beginning at a point having Coordinates of X = 2,043,187.00 and Y = 253,095.00; thence East 11,315.00 feet to a point having Coordinates of X = 2,054,502.00 and Y = 253,095.00; thence South 9,500.00 feet to a point having Coordinates of X = 2,054,502.00 and Y = 243,595.00; thence West 11,315.00 feet to a point having Coordinates of X = 2,043,187.00 and Y = 243,595.00; thence North 9,500.00 feet to the point of beginning, containing approximately **2,457 acres**, all as more particularly outlined on a plat on file in the Office of Mineral Resources, Department of Natural Resources. All bearings, distances and coordinates are based on Louisiana Coordinate System of 1927, (North or South Zone), where applicable.

NOTE: The above description of the Tract nominated for lease has been provided and corrected, where required, exclusively by the nomination party. Any mineral lease selected from this Tract and awarded by the Louisiana State Mineral Board shall be without warranty of any kind, either express, implied, or statutory, including, but not limited to, the implied warranties of merchantability and fitness for a particular purpose. Should the mineral lease awarded by the Louisiana State Mineral Board be subsequently modified, cancelled or abrogated due to the existence of conflicting leases, operating agreements, private claims or other future obligations or conditions which may affect all or any portion of the leased Tract, it shall not relieve the Lessee of the obligation to pay any bonus due thereon to the Louisiana State Mineral Board, nor shall the Louisiana State Mineral Board be obligated to refund any consideration paid by the Lessor prior to such modification, cancellation, or abrogation, including, but not limited to, bonuses, rentals and royalties.

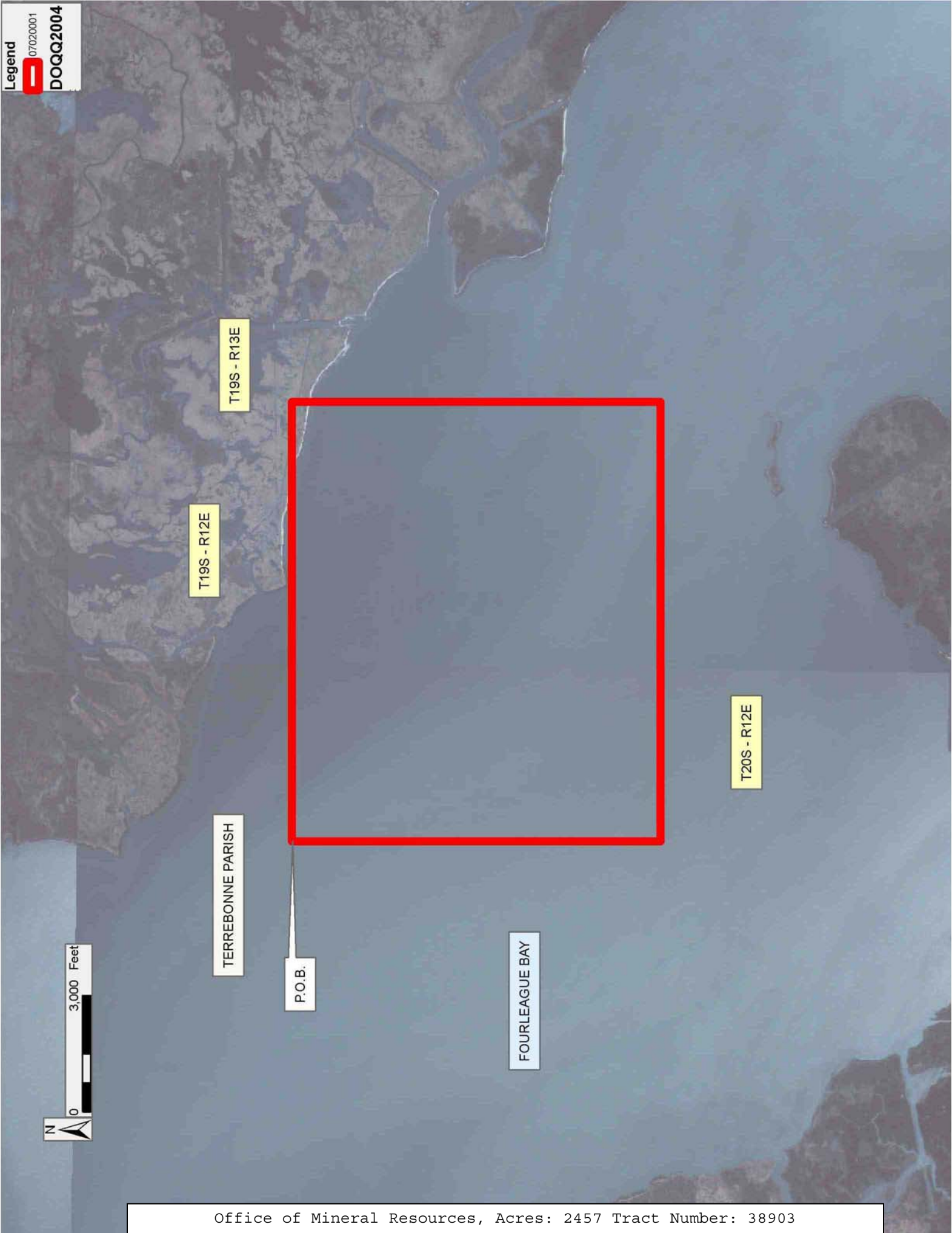
NOTE: The State of Louisiana does hereby reserve, and this lease shall be subject to, the imprescriptible right of surface use in the nature of a servitude in favor of the Department of Natural Resources, including its Offices and Commissions, for the sole purpose of implementing, constructing, servicing and maintaining approved coastal zone management and/or restoration projects. Utilization of any and all rights derived under this lease by the mineral lessee, its agents, successors or assigns, shall not interfere with nor hinder the reasonable surface use by the Department of Natural Resources, its Offices or Commissions, as herein above reserved.

NOTE: The Department of Wildlife and Fisheries has designated certain areas in the coastal waters of the State of Louisiana as Oyster Seed Bed Areas. The exact location of those Seed Bed Areas must be obtained from

the Department of Wildlife and Fisheries and any work done under a mineral lease from the State of Louisiana may necessarily be conducted in conformity with the rules and regulations promulgated by the said Department of Wildlife and Fisheries for Oyster Seed Bed Areas.

Applicant: THEOPHILUS OIL GAS & LAND SERVICES LLC

Bidder	Cash Payment	Price/ Acre	Rental	Oil	Gas	Other



TRACT 38904 - Terrebonne Parish, Louisiana

All of the lands now or formerly constituting the beds and bottoms of all water bodies of every nature and description the title of which vests in the State of Louisiana, together with all islands arising therein and other lands formed by accretion or by reliction, where allowed by law, excepting tax adjudicated lands, and not presently under mineral lease on February 14, 2007, situated in Terrebonne Parish, Louisiana, and more particularly described as follows: Beginning at a point having Coordinates of X = 2,054,502.00 and Y = 253,095.00; thence East 11,315.00 feet to a point having Coordinates of X = 2,065,817.00 and Y = 253,095.00; thence South 6,569.81 feet to a point on the North boundary of State Lease No. 18677, having Coordinates of X = 2,065,817.00 and Y = 246,525.19; thence West 6,221.14 feet along the North boundary of said State Lease No. 18677 to its Northwest corner having Coordinates of X = 2,059,595.86 and Y = 246,525.19; thence South 2,930.19 feet along the West boundary of said State Lease No. 18677 to a point having Coordinates of X = 2,059,595.86 and Y = 243,595.00; thence West 5,093.86 feet to a point having Coordinates of X = 2,054,502.00 and Y = 243,595.00; thence North 9,500.00 feet to the point of beginning, containing approximately **813 acres**, all as more particularly outlined on a plat on file in the Office of Mineral Resources, Department of Natural Resources. All bearings, distances and coordinates are based on Louisiana Coordinate System of 1927, (North or South Zone), where applicable.

NOTE: The above description of the Tract nominated for lease has been provided and corrected, where required, exclusively by the nomination party. Any mineral lease selected from this Tract and awarded by the Louisiana State Mineral Board shall be without warranty of any kind, either express, implied, or statutory, including, but not limited to, the implied warranties of merchantability and fitness for a particular purpose. Should the mineral lease awarded by the Louisiana State Mineral Board be subsequently modified, cancelled or abrogated due to the existence of conflicting leases, operating agreements, private claims or other future obligations or conditions which may affect all or any portion of the leased Tract, it shall not relieve the Lessee of the obligation to pay any bonus due thereon to the Louisiana State Mineral Board, nor shall the Louisiana State Mineral Board be obligated to refund any consideration paid by the Lessor prior to such modification, cancellation, or abrogation, including, but not limited to, bonuses, rentals and royalties.

NOTE: The State of Louisiana does hereby reserve, and this lease shall be subject to, the imprescriptible right of surface use in the nature of a servitude in favor of the Department of Natural Resources, including its Offices and Commissions, for the sole purpose of implementing, constructing, servicing and maintaining approved coastal zone management and/or restoration projects. Utilization of any and all rights derived under this lease by the mineral lessee, its agents, successors or assigns, shall not interfere with nor hinder the reasonable surface use by the

Department of Natural Resources, its Offices or Commissions, as herein above reserved.

NOTE: The Department of Wildlife and Fisheries has designated certain areas in the coastal waters of the State of Louisiana as Oyster Seed Bed Areas. The exact location of those Seed Bed Areas must be obtained from the Department of Wildlife and Fisheries and any work done under a mineral lease from the State of Louisiana may necessarily be conducted in conformity with the rules and regulations promulgated by the said Department of Wildlife and Fisheries for Oyster Seed Bed Areas.

Applicant: THEOPHILUS OIL GAS & LAND SERVICES LLC

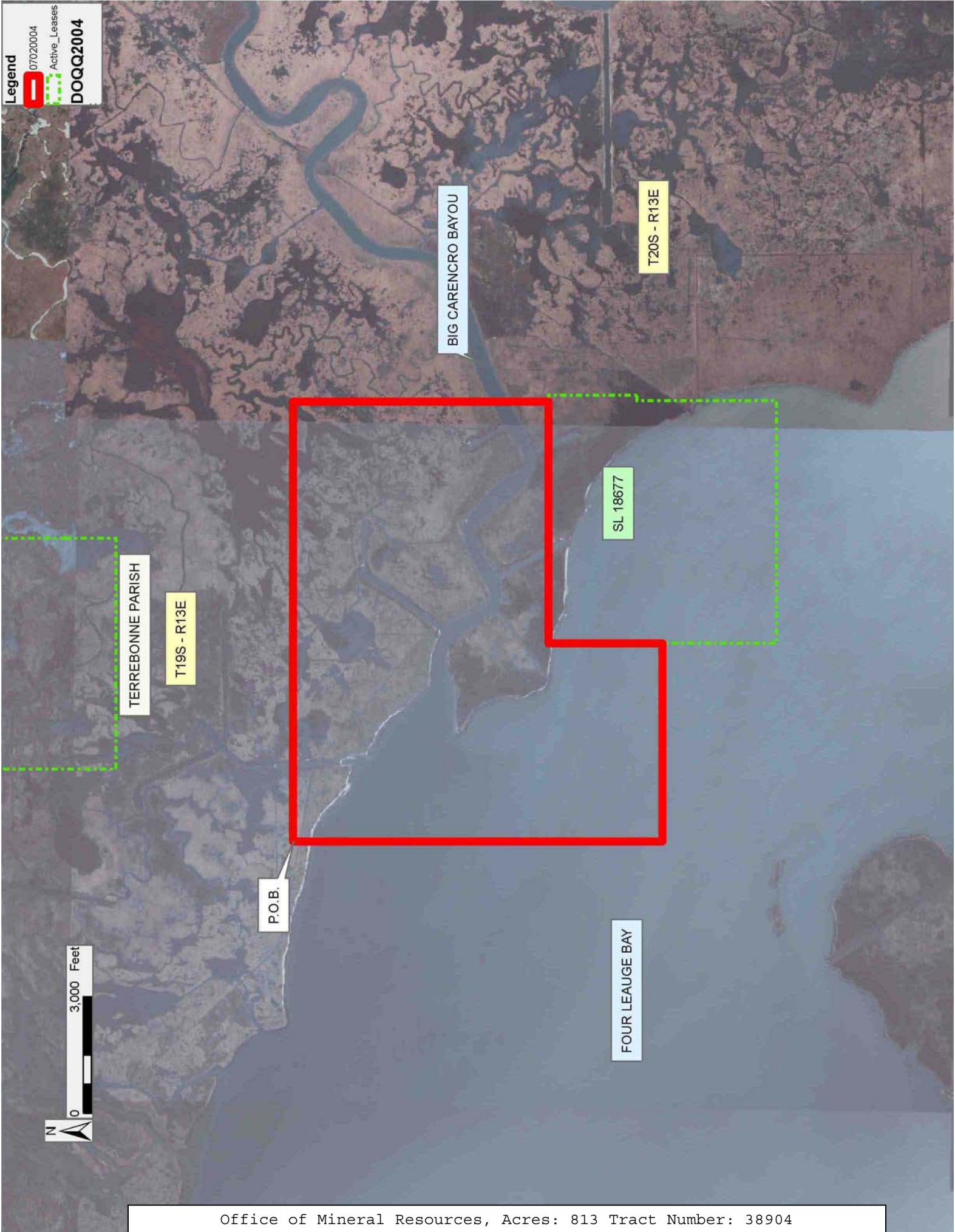
Bidder	Cash Payment	Price/ Acre	Rental	Oil	Gas	Other

Legend

07020004

Active_Leases

DOQQ2004



TRACT 38905 - Terrebonne Parish, Louisiana

All of the lands now or formerly constituting the beds and bottoms of all water bodies of every nature and description the title of which vests in the State of Louisiana, together with all islands arising therein and other lands formed by accretion or by reliction, where allowed by law, excepting tax adjudicated lands, and not presently under mineral lease on February 14, 2007, situated in Terrebonne Parish, Louisiana, and more particularly described as follows: Beginning at a point having Coordinates of X = 2,043,187.00 and Y = 243,595.00; thence East 11,315.00 feet to a point having Coordinates of X = 2,054,502.00 and Y = 243,595.00; thence South 9,500.00 feet to a point having Coordinates of X = 2,054,502.00 and Y = 234,095.00; thence West 11,315.00 feet to a point having Coordinates of X = 2,043,187.00 and Y = 234,095.00; thence North 9,500.00 feet to the point of beginning, containing approximately **1,850 acres**, all as more particularly outlined on a plat on file in the Office of Mineral Resources, Department of Natural Resources. All bearings, distances and coordinates are based on Louisiana Coordinate System of 1927, (North or South Zone), where applicable.

NOTE: The above description of the Tract nominated for lease has been provided and corrected, where required, exclusively by the nomination party. Any mineral lease selected from this Tract and awarded by the Louisiana State Mineral Board shall be without warranty of any kind, either express, implied, or statutory, including, but not limited to, the implied warranties of merchantability and fitness for a particular purpose. Should the mineral lease awarded by the Louisiana State Mineral Board be subsequently modified, cancelled or abrogated due to the existence of conflicting leases, operating agreements, private claims or other future obligations or conditions which may affect all or any portion of the leased Tract, it shall not relieve the Lessee of the obligation to pay any bonus due thereon to the Louisiana State Mineral Board, nor shall the Louisiana State Mineral Board be obligated to refund any consideration paid by the Lessor prior to such modification, cancellation, or abrogation, including, but not limited to, bonuses, rentals and royalties.

NOTE: The State of Louisiana does hereby reserve, and this lease shall be subject to, the imprescriptible right of surface use in the nature of a servitude in favor of the Department of Natural Resources, including its Offices and Commissions, for the sole purpose of implementing, constructing, servicing and maintaining approved coastal zone management and/or restoration projects. Utilization of any and all rights derived under this lease by the mineral lessee, its agents, successors or assigns, shall not interfere with nor hinder the reasonable surface use by the Department of Natural Resources, its Offices or Commissions, as herein above reserved.

NOTE: The Department of Wildlife and Fisheries has designated certain areas in the coastal waters of the State of Louisiana as Oyster Seed Bed Areas. The exact location of those Seed Bed Areas must be obtained from

the Department of Wildlife and Fisheries and any work done under a mineral lease from the State of Louisiana may necessarily be conducted in conformity with the rules and regulations promulgated by the said Department of Wildlife and Fisheries for Oyster Seed Bed Areas.

Applicant: THEOPHILUS OIL GAS & LAND SERVICES LLC

Bidder	Cash Payment	Price/ Acre	Rental	Oil	Gas	Other



T20S - R13E

TERREBONNE PARISH

T20S - R12E

P.O.B.

FOUR LEAUGE BAY

MOSQUITO BAYOU



TRACT 38906 - Terrebonne Parish, Louisiana

All of the lands now or formerly constituting the beds and bottoms of all water bodies of every nature and description the title of which vests in the State of Louisiana, together with all islands arising therein and other lands formed by accretion or by reliction, where allowed by law, excepting tax adjudicated lands, and not presently under mineral lease on February 14, 2007, situated in Terrebonne Parish, Louisiana, and more particularly described as follows: Beginning at a point having Coordinates of X = 2,054,502.00 and Y = 243,595.00; thence East 5,093.86 feet to a point on the West boundary of State Lease No. 18677, having Coordinates of X = 2,059,595.86 and Y = 243,595.00; thence South 2,928.19 feet along the West boundary of said State Lease No. 18677 to its Southwest corner having Coordinates of X = 2,059,595.86 and Y = 240,666.81; thence East 6,221.14 feet along the South boundary of said State Lease No. 18677 to a point having Coordinates of X = 2,065,817.00 and Y = 240,666.81; thence South 6,571.81 feet to a point having Coordinates of X = 2,065,817.00 and Y = 234,095.00; thence West 11,315.00 feet to a point having Coordinates of X = 2,054,502.00 and Y = 234,095.00; thence North 9,500.00 feet to the point of beginning, containing approximately **2,047 acres**, all as more particularly outlined on a plat on file in the Office of Mineral Resources, Department of Natural Resources. All bearings, distances and coordinates are based on Louisiana Coordinate System of 1927, (North or South Zone), where applicable.

NOTE: The above description of the Tract nominated for lease has been provided and corrected, where required, exclusively by the nomination party. Any mineral lease selected from this Tract and awarded by the Louisiana State Mineral Board shall be without warranty of any kind, either express, implied, or statutory, including, but not limited to, the implied warranties of merchantability and fitness for a particular purpose. Should the mineral lease awarded by the Louisiana State Mineral Board be subsequently modified, cancelled or abrogated due to the existence of conflicting leases, operating agreements, private claims or other future obligations or conditions which may affect all or any portion of the leased Tract, it shall not relieve the Lessee of the obligation to pay any bonus due thereon to the Louisiana State Mineral Board, nor shall the Louisiana State Mineral Board be obligated to refund any consideration paid by the Lessor prior to such modification, cancellation, or abrogation, including, but not limited to, bonuses, rentals and royalties.

NOTE: The State of Louisiana does hereby reserve, and this lease shall be subject to, the imprescriptible right of surface use in the nature of a servitude in favor of the Department of Natural Resources, including its Offices and Commissions, for the sole purpose of implementing, constructing, servicing and maintaining approved coastal zone management and/or restoration projects. Utilization of any and all rights derived under this lease by the mineral lessee, its agents, successors or assigns, shall not interfere with nor hinder the reasonable surface use by the

Department of Natural Resources, its Offices or Commissions, as herein above reserved.

NOTE: The Department of Wildlife and Fisheries has designated certain areas in the coastal waters of the State of Louisiana as Oyster Seed Bed Areas. The exact location of those Seed Bed Areas must be obtained from the Department of Wildlife and Fisheries and any work done under a mineral lease from the State of Louisiana may necessarily be conducted in conformity with the rules and regulations promulgated by the said Department of Wildlife and Fisheries for Oyster Seed Bed Areas.

Applicant: THEOPHILUS OIL GAS & LAND SERVICES LLC

Bidder	Cash Payment	Price/ Acre	Rental	Oil	Gas	Other

Legend

07020003

Active_Leases

DOQQ2004

