

TRACT 38887 - St. Mary and Terrebonne Parishes, Louisiana

All of the lands now or formerly constituting the beds and bottoms of all water bodies of every nature and description the title of which vests in the State of Louisiana, together with all islands arising therein and other lands formed by accretion or by reliction, where allowed by law, excepting tax adjudicated lands, and not presently under mineral lease on February 14, 2007, situated in St. Mary and Terrebonne Parishes, Louisiana, and more particularly described as follows: Beginning at a point having Coordinates of X = 2,053,950.00 and Y = 343,900.00; thence South 02 degrees 07 minutes 16 seconds East 2,701.85 feet to a point having a Coordinates of X = 2,054,050.00 and Y = 341,200.00; thence South 89 degrees 13 minutes 58 seconds West approximately 5,087 feet to a point on the East boundary of State Lease No. 341, as amended; thence Northerly approximately 2,679 feet along the East boundary of said State Lease No. 341 to a point; thence, leaving said State Lease No. 341, North 88 degrees 58 minutes 37 seconds East approximately 5,028 feet to the point of beginning, **LESS AND EXCEPT** that portion, if any, of State Lease No. 341, as amended, which may lie within the above described tract, containing approximately **62 acres**, all as more particularly outlined on a plat on file in the Office of Mineral Resources, Department of Natural Resources. All bearings, distances and coordinates are based on Louisiana Coordinate System of 1927, (North or South Zone), where applicable.

NOTE: The above description of the Tract nominated for lease has been provided and corrected, where required, exclusively by the nomination party. Any mineral lease selected from this Tract and awarded by the Louisiana State Mineral Board shall be without warranty of any kind, either express, implied, or statutory, including, but not limited to, the implied warranties of merchantability and fitness for a particular purpose. Should the mineral lease awarded by the Louisiana State Mineral Board be subsequently modified, cancelled or abrogated due to the existence of conflicting leases, operating agreements, private claims or other future obligations or conditions which may affect all or any portion of the leased Tract, it shall not relieve the Lessee of the obligation to pay any bonus due thereon to the Louisiana State Mineral Board, nor shall the Louisiana State Mineral Board be obligated to refund any consideration paid by the Lessor prior to such modification, cancellation, or abrogation, including, but not limited to, bonuses, rentals and royalties.

NOTE: The State of Louisiana does hereby reserve, and this lease shall be subject to, the imprescriptible right of surface use in the nature of a servitude in favor of the Department of Natural Resources, including its Offices and Commissions, for the sole purpose of implementing, constructing, servicing and maintaining approved coastal zone management and/or restoration projects. Utilization of any and all rights derived under this lease by the mineral lessee, its agents, successors or assigns, shall not interfere with nor hinder the reasonable surface use by the Department of Natural Resources, its Offices or Commissions, as herein above reserved.

NOTE: The above Tract is located upon a restricted scenic river and all operations in this area must be conducted in strict conformity with the regulations of the Corps of Engineers, U.S. Army.

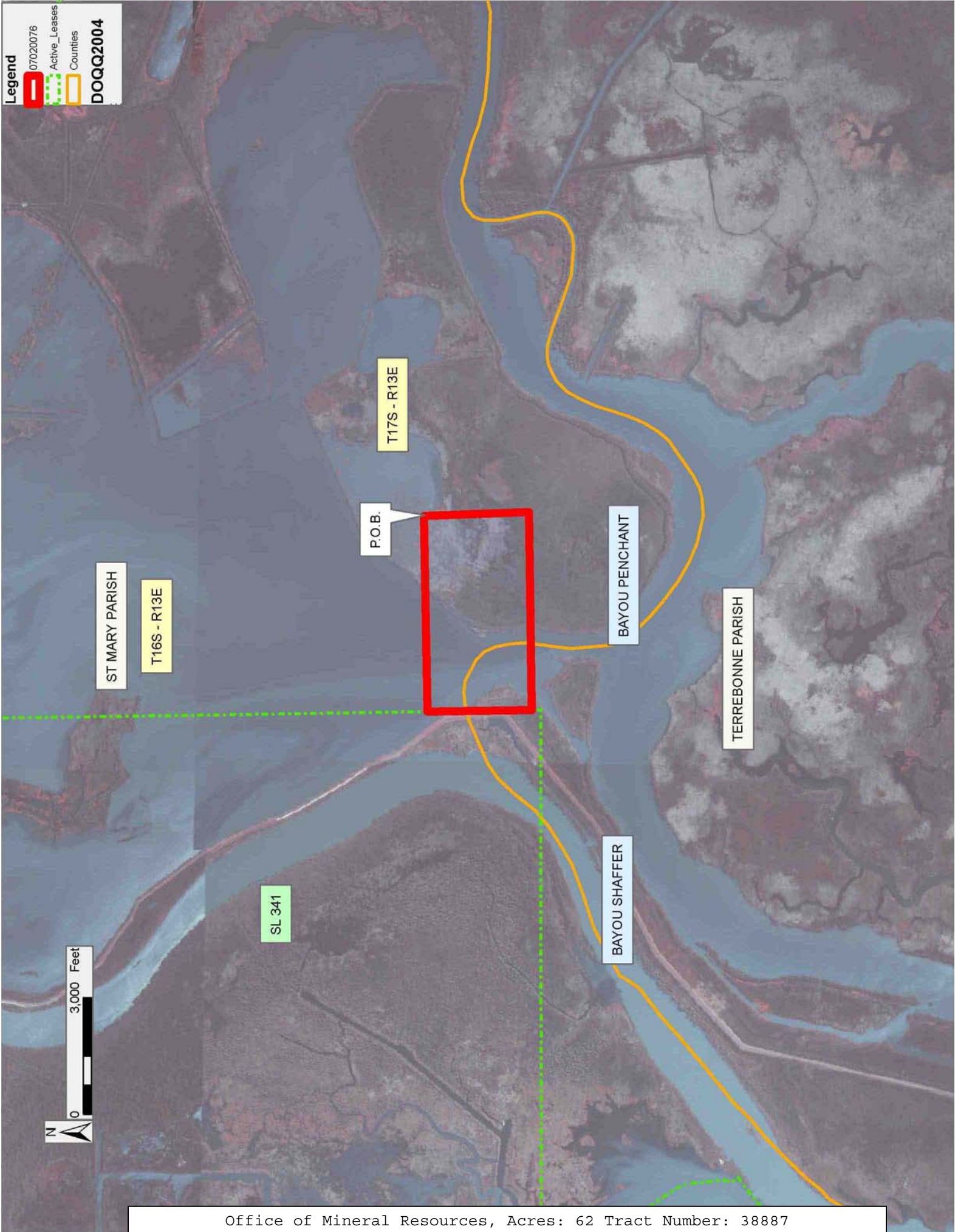
Applicant: GHJ LAND SERVICES, L.L.C.

Bidder	Cash Payment	Price/Acre	Rental	Oil	Gas	Other

Legend

- 07020076
- - - Active_Leases
- Counties

DOQQ2004



TRACT 38888 - Iberia and St. Mary Parishes, Louisiana

All of the lands now or formerly constituting the beds and bottoms of all water bodies of every nature and description the title of which vests in the State of Louisiana, together with all islands arising therein and other lands formed by accretion or by reliction, where allowed by law, excepting tax adjudicated lands, and not presently under mineral lease on February 14, 2007, situated in Iberia and St. Mary Parishes, Louisiana, and more particularly described as follows: Beginning at the Northeast corner of State Lease No. 12897 having Coordinates of X = 1,897,300.00 and Y = 344,508.77; thence East 5,700.00 feet to a point having Coordinates of X = 1,903,000.00 and Y = 344,508.77; thence South 2,008.77 feet to the Northwest corner of State Lease No. 16381 having Coordinates of X = 1,903,000.00 and Y = 342,500.00; thence along the boundary of said State Lease No. 16381 the following courses: South 4,850.00 feet and East 1,617.18 feet to its most Southern Southeast corner, also being a point on the West line of State Lease No. 10251, as amended, having Coordinates of X = 1,904,617.18 and Y = 337,650.00; thence South 00 degrees 06 minutes 10 seconds West 2,788.89 feet along the West line of said State Lease No. 10251 to its Southwest corner having Coordinates of X = 1,904,612.18 and Y = 334,861.11; thence South 2,004.04 feet to a point having Coordinates of X = 1,904,612.18 and Y = 332,857.07; thence West 10,271.46 feet to a point having Coordinates of X = 1,894,340.72 and Y = 332,857.07; thence North 5,218.93 feet to the Southeast corner of State Lease No. 10835 having Coordinates of X = 1,894,340.72 and Y = 338,076.00; thence North 2,832.77 feet along the East line of said State Lease No. 10835 to the Southwest corner of State Lease No. 12897 having Coordinates of X = 1,894,340.72 and Y = 340,908.77; thence along the boundary of said State Lease No. 12897 the following courses: East 2,959.28 feet and North 3,600.00 feet to the point of beginning, containing approximately **2,249.22 acres**, all as more particularly outlined on a plat on file in the Office of Mineral Resources, Department of Natural Resources. All bearings, distances and coordinates are based on Louisiana Coordinate System of 1927, (North or South Zone), where applicable.

NOTE: The above description of the Tract nominated for lease has been provided and corrected, where required, exclusively by the nomination party. Any mineral lease selected from this Tract and awarded by the Louisiana State Mineral Board shall be without warranty of any kind, either express, implied, or statutory, including, but not limited to, the implied warranties of merchantability and fitness for a particular purpose. Should the mineral lease awarded by the Louisiana State Mineral Board be subsequently modified, cancelled or abrogated due to the existence of conflicting leases, operating agreements, private claims or other future obligations or conditions which may affect all or any portion of the leased Tract, it shall not relieve the Lessee of the obligation to pay any bonus due thereon to the Louisiana State Mineral Board, nor shall the Louisiana State Mineral Board be obligated to refund any consideration paid by the Lessor prior to such modification, cancellation, or abrogation, including, but not limited to, bonuses, rentals and royalties.

NOTE: The State of Louisiana does hereby reserve, and this lease shall be subject to, the imprescriptible right of surface use in the nature of a servitude in favor of the Department of Natural Resources, including its Offices and Commissions, for the sole purpose of implementing, constructing, servicing and maintaining approved coastal zone management and/or restoration projects. Utilization of any and all rights derived under this lease by the mineral lessee, its agents, successors or assigns, shall not interfere with nor hinder the reasonable surface use by the Department of Natural Resources, its Offices or Commissions, as herein above reserved.

NOTE: The Department of Wildlife and Fisheries has designated certain areas in the coastal waters of the State of Louisiana as Oyster Seed Bed Areas. The exact location of those Seed Bed Areas must be obtained from the Department of Wildlife and Fisheries and any work done under a mineral lease from the State of Louisiana may necessarily be conducted in conformity with the rules and regulations promulgated by the said Department of Wildlife and Fisheries for Oyster Seed Bed Areas.

Applicant: CYPRESS ENERGY CORPORATION

Bidder	Cash Payment	Price/Acre	Rental	Oil	Gas	Other

Legend

- 07020055
- Active_Leases
- Countries



ST MARY PARISH

ATCHAFALAYA BAY

P.O.B.

SL 12897

SL 10835

IBERIA PARISH

SL 16381

SL 10251

VERMILION BAY

TRACT 38889 - St. Mary and Terrebonne Parishes, Louisiana

All of the lands now or formerly constituting the beds and bottoms of all water bodies of every nature and description the title of which vests in the State of Louisiana, together with all islands arising therein and other lands formed by accretion or by reliction, where allowed by law, excepting tax adjudicated lands, and not presently under mineral lease on February 14, 2007, situated in St. Mary and Terrebonne Parishes, Louisiana, and more particularly described as follows: Beginning at a point having Coordinates of X = 2,048,550.00 and Y = 338,450.00; thence South 89 degrees 27 minutes 52 seconds West 5,350.23 feet to a point having a Coordinates of X = 2,043,200.00 and Y = 338,400.00; thence North 02 degrees 08 minutes 27 seconds West approximately 2,495 feet to a point on the South boundary of State Lease No. 341, as amended; thence Easterly approximately 5,861 feet along the South boundary of said State Lease No. 341 to its Southeast corner; thence Northerly approximately 234 feet along the East boundary of said State Lease No. 341 to a point; thence, leaving said State Lease No. 341, North 89 degrees 13 minutes 58 seconds East approximately 5,087 feet to a point having a Coordinates of X = 2,054,050.00 and Y = 341,200.00; thence South 02 degrees 07 minutes 16 seconds East 2,701.85 feet to a point having Coordinates of X = 2,054,150.00 and Y = 338,500.00; thence South 89 degrees 29 minutes 18 seconds West 5,600.22 feet to the point of beginning, **LESS AND EXCEPT** that portion, if any, of State Lease No. 341, as amended, which may lie within the above described tract, containing approximately **133 acres**, all as more particularly outlined on a plat on file in the Office of Mineral Resources, Department of Natural Resources. All bearings, distances and coordinates are based on Louisiana Coordinate System of 1927, (North or South Zone), where applicable.

NOTE: The above description of the Tract nominated for lease has been provided and corrected, where required, exclusively by the nomination party. Any mineral lease selected from this Tract and awarded by the Louisiana State Mineral Board shall be without warranty of any kind, either express, implied, or statutory, including, but not limited to, the implied warranties of merchantability and fitness for a particular purpose. Should the mineral lease awarded by the Louisiana State Mineral Board be subsequently modified, cancelled or abrogated due to the existence of conflicting leases, operating agreements, private claims or other future obligations or conditions which may affect all or any portion of the leased Tract, it shall not relieve the Lessee of the obligation to pay any bonus due thereon to the Louisiana State Mineral Board, nor shall the Louisiana State Mineral Board be obligated to refund any consideration paid by the Lessor prior to such modification, cancellation, or abrogation, including, but not limited to, bonuses, rentals and royalties.

NOTE: The State of Louisiana does hereby reserve, and this lease shall be subject to, the imprescriptible right of surface use in the nature of a servitude in favor of the Department of Natural Resources, including its Offices and Commissions, for the sole purpose of implementing,

constructing, servicing and maintaining approved coastal zone management and/or restoration projects. Utilization of any and all rights derived under this lease by the mineral lessee, its agents, successors or assigns, shall not interfere with nor hinder the reasonable surface use by the Department of Natural Resources, its Offices or Commissions, as herein above reserved.

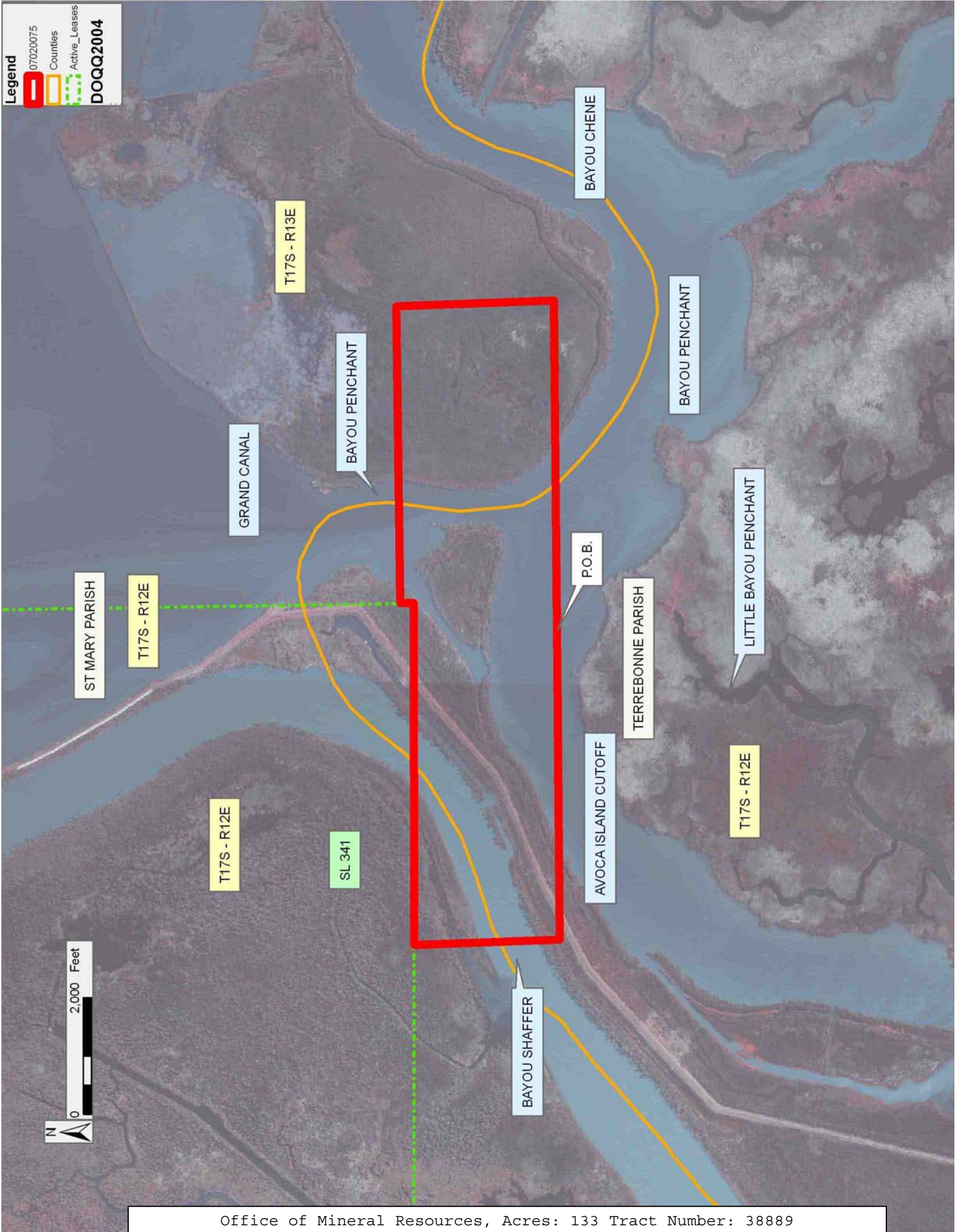
NOTE: The above Tract is located upon a restricted scenic river and all operations in this area must be conducted in strict conformity with the regulations of the Corps of Engineers, U.S. Army.

Applicant: GHJ LAND SERVICES, L.L.C.

Bidder	Cash Payment	Price/Acre	Rental	Oil	Gas	Other

Legend

- 07020075
- Counties
- Active_Leases
- DOQQ2004**



TRACT 38890 - Iberia Parish, Louisiana

All of the lands now or formerly constituting the beds and bottoms of all water bodies of every nature and description the title of which vests in the State of Louisiana, together with all islands arising therein and other lands formed by accretion or by reliction, where allowed by law, excepting tax adjudicated lands, and not presently under mineral lease on February 14, 2007, situated in Iberia Parish, Louisiana, and more particularly described as follows: Beginning at point having Coordinates of X = 1,865,034.16 and Y = 341,975.00; thence East 12,065.84 feet to the most Southern Southwest corner of State Lease No. 19138 having Coordinates of X = 1,877,100.00 and Y = 341,975.00; thence East 1,051.13 feet along the South line of said State Lease No. 19138 to a point on the boundary of State Lease No. 1703 having Coordinates of X = 1,878,151.13 and Y = 341,975.00; thence along the boundary of said State Lease No. 1703 the following courses and distances: South 00 degrees 14 minutes 09 seconds West 2,843.81 feet, North 79 degrees 48 minutes 24 seconds West 558.23 feet, North 82 degrees 10 minutes 35 seconds West 1,322.31 feet, North 85 degrees 58 minutes 00 seconds West 1,563.87 feet, North 89 degrees 23 minutes 26 seconds West 940.05 feet, South 85 degrees 27 minutes 44 seconds West 1,263.96 feet, South 83 degrees 05 minutes 20 seconds West 997.25 feet, South 74 degrees 08 minutes 53 seconds West 842.02 feet, South 67 degrees 06 minutes 01 seconds West 1,259.25 feet, South 59 degrees 57 minutes 13 seconds West 1,178.35 feet, South 55 degrees 08 minutes 44 seconds West 1,364.84 feet, and South 49 degrees 53 minutes 20 seconds West 514.91 feet to its Southwest corner and a point on the North line of said State Lease No. 1706 having Coordinates of X = 1,867,026.19 and Y = 336,888.26; thence North 89 degrees 45 minutes 52 seconds West 1,992.05 feet on the North line of said State Lease No. 1706 to its Northwest corner having Coordinates of X = 1,865,034.16 and Y = 336,896.45; thence North 5,078.55 feet to the point of beginning, containing approximately **1,000.24 acres**, all as more particularly outlined on a plat on file in the Office of Mineral Resources, Department of Natural Resources. All bearings, distances and coordinates are based on Louisiana Coordinate System of 1927, (North or South Zone), where applicable.

NOTE: The above description of the Tract nominated for lease has been provided and corrected, where required, exclusively by the nomination party. Any mineral lease selected from this Tract and awarded by the Louisiana State Mineral Board shall be without warranty of any kind, either express, implied, or statutory, including, but not limited to, the implied warranties of merchantability and fitness for a particular purpose. Should the mineral lease awarded by the Louisiana State Mineral Board be subsequently modified, cancelled or abrogated due to the existence of conflicting leases, operating agreements, private claims or other future obligations or conditions which may affect all or any portion of the leased Tract, it shall not relieve the Lessee of the obligation to pay any bonus due thereon to the Louisiana State Mineral Board, nor shall the Louisiana State Mineral Board be obligated to refund any consideration

paid by the Lessor prior to such modification, cancellation, or abrogation, including, but not limited to, bonuses, rentals and royalties.

NOTE: The State of Louisiana does hereby reserve, and this lease shall be subject to, the imprescriptible right of surface use in the nature of a servitude in favor of the Department of Natural Resources, including its Offices and Commissions, for the sole purpose of implementing, constructing, servicing and maintaining approved coastal zone management and/or restoration projects. Utilization of any and all rights derived under this lease by the mineral lessee, its agents, successors or assigns, shall not interfere with nor hinder the reasonable surface use by the Department of Natural Resources, its Offices or Commissions, as herein above reserved.

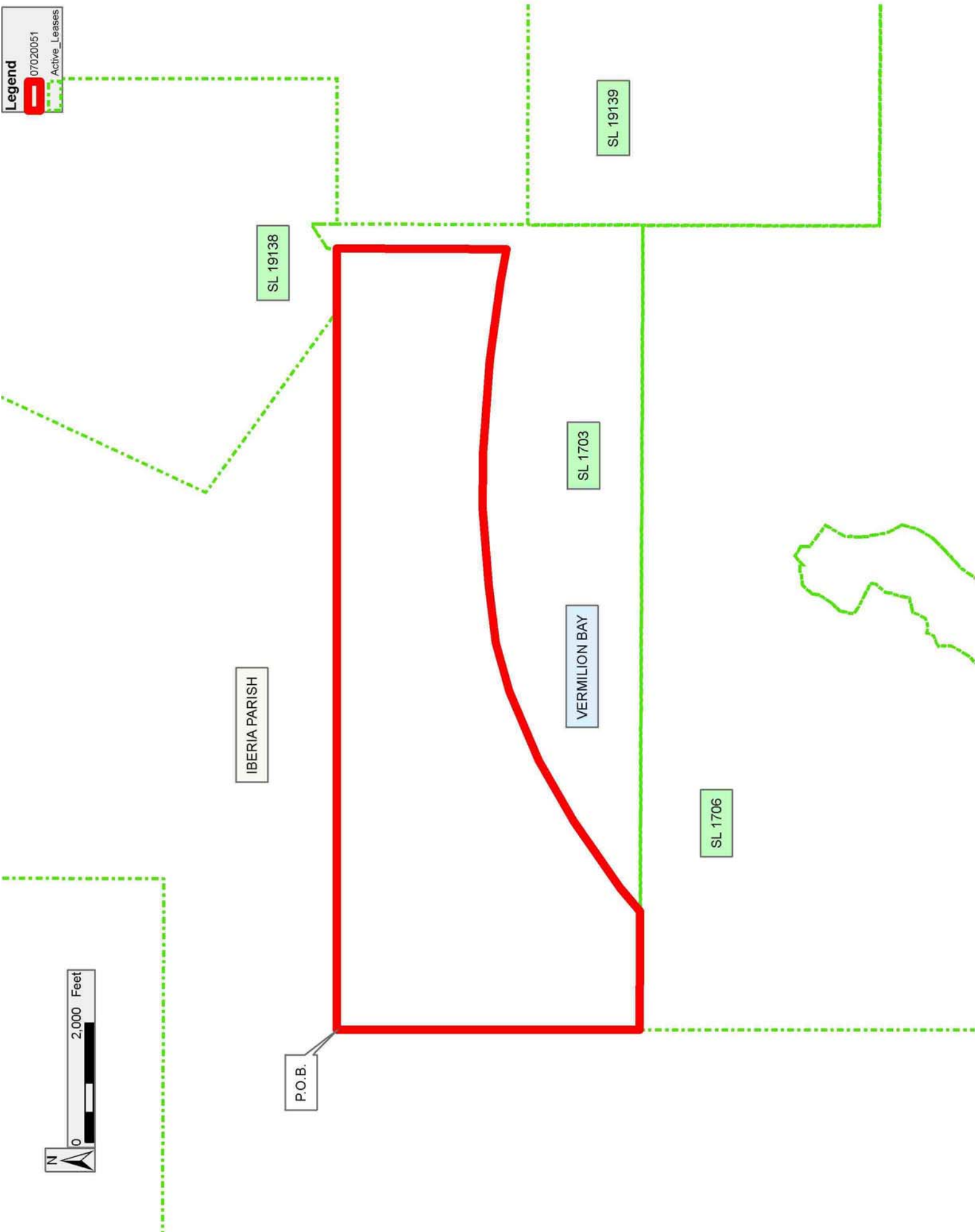
NOTE: The Department of Wildlife and Fisheries has designated certain areas in the coastal waters of the State of Louisiana as Oyster Seed Bed Areas. The exact location of those Seed Bed Areas must be obtained from the Department of Wildlife and Fisheries and any work done under a mineral lease from the State of Louisiana may necessarily be conducted in conformity with the rules and regulations promulgated by the said Department of Wildlife and Fisheries for Oyster Seed Bed Areas.

NOTE: All or a portion of this Tract lies within one nautical mile of the boundary of the Russell Sage or Marsh Island Wildlife Refuge and Game Preserve. Any activities connected with this lease conducted within this Tract which may pose potential environmental impacts to the said Wildlife Refuge and Game Preserve should be coordinated with the Louisiana Department of Wildlife and Fisheries.

Applicant: CYPRESS ENERGY CORPORATION

Bidder	Cash Payment	Price/Acre	Rental	Oil	Gas	Other

Legend
07020051
Active_Leases



TRACT 38891 - Iberia and St. Mary Parishes, Louisiana

All of the lands now or formerly constituting the beds and bottoms of all water bodies of every nature and description the title of which vests in the State of Louisiana, together with all islands arising therein and other lands formed by accretion or by reliction, where allowed by law, excepting tax adjudicated lands, and not presently under mineral lease on February 14, 2007, situated in Iberia and St. Mary Parishes, Louisiana, and more particularly described as follows: Beginning at a point on the East line of State Lease No. 1703 and the South line of State Lease No. 19138 having Coordinates of X = 1,878,558.92 and Y = 341,975.00; thence East 7,865.65 feet to a point on the West line of State Lease No. 11279 as amended, having Coordinates of X = 1,886,424.57 and Y = 341,975.00; thence along the boundary of said State Lease No. 11279 the following courses: South 00 degrees 03 minutes 51 seconds West 334.45 feet and South 89 degrees 45 minutes 58 seconds East 2,425.82 feet to a corner of State Lease No. 11282 having Coordinates of X = 1,888,850.00 and Y = 341,630.65; thence along the boundary of said State Lease No. 11282 the following courses: South 89 degrees 44 minutes 04 seconds East 140.27 feet, South 00 degrees 14 minutes 06 seconds West 3,554.03 feet and East 1,024.31 feet to its Southeast corner and the Southwest corner of State Lease No. 10835 having Coordinates of X = 1,890,000.00 and Y = 338,076.00; thence East 4,340.72 feet along the South line of said State Lease No. 10835 to its Southeast corner having Coordinates of X = 1,894,340.72 and Y = 338,076.00; thence South 5,218.93 feet to a point having Coordinates of X = 1,894,340.72 and Y = 332,857.07; thence West 9,915.64 feet to the Southeast corner of State Lease NO. 19139 having Coordinates of X = 1,884,425.08 and Y = 332,857.07; thence along the boundary of said State Lease No. 19139 the following courses: North 00 degrees 14 minutes 08 seconds East 3,967.97 feet, North 00 degrees 13 minutes 52 seconds East 1,935.25 feet, West 2,037.23 feet and North 89 degrees 45 minutes 52 seconds West 3,866.00 feet to its Northwest corner and a point on the East line of State Lease NO. 1703 having Coordinates of X = 1,878,546.01 and Y = 338,776.13; thence North 00 degrees 13 minutes 52 seconds East 3,198.90 feet along the East line of said State Lease No. 1703 to the point of beginning, **LESS AND EXCEPT** any portion of the above described tract which may lie within State Lease No. 2276, containing approximately **2,007.07 acres**, all as more particularly outlined on a plat on file in the Office of Mineral Resources, Department of Natural Resources. All bearings, distances and coordinates are based on Louisiana Coordinate System of 1927, (North or South Zone), where applicable.

NOTE: The above description of the Tract nominated for lease has been provided and corrected, where required, exclusively by the nomination party. Any mineral lease selected from this Tract and awarded by the Louisiana State Mineral Board shall be without warranty of any kind, either express, implied, or statutory, including, but not limited to, the implied warranties of merchantability and fitness for a particular purpose. Should the mineral lease awarded by the Louisiana State Mineral Board be subsequently modified, cancelled or abrogated due to the

existence of conflicting leases, operating agreements, private claims or other future obligations or conditions which may affect all or any portion of the leased Tract, it shall not relieve the Lessee of the obligation to pay any bonus due thereon to the Louisiana State Mineral Board, nor shall the Louisiana State Mineral Board be obligated to refund any consideration paid by the Lessor prior to such modification, cancellation, or abrogation, including, but not limited to, bonuses, rentals and royalties.

NOTE: The State of Louisiana does hereby reserve, and this lease shall be subject to, the imprescriptible right of surface use in the nature of a servitude in favor of the Department of Natural Resources, including its Offices and Commissions, for the sole purpose of implementing, constructing, servicing and maintaining approved coastal zone management and/or restoration projects. Utilization of any and all rights derived under this lease by the mineral lessee, its agents, successors or assigns, shall not interfere with nor hinder the reasonable surface use by the Department of Natural Resources, its Offices or Commissions, as herein above reserved.

NOTE: The Department of Wildlife and Fisheries has designated certain areas in the coastal waters of the State of Louisiana as Oyster Seed Bed Areas. The exact location of those Seed Bed Areas must be obtained from the Department of Wildlife and Fisheries and any work done under a mineral lease from the State of Louisiana may necessarily be conducted in conformity with the rules and regulations promulgated by the said Department of Wildlife and Fisheries for Oyster Seed Bed Areas.

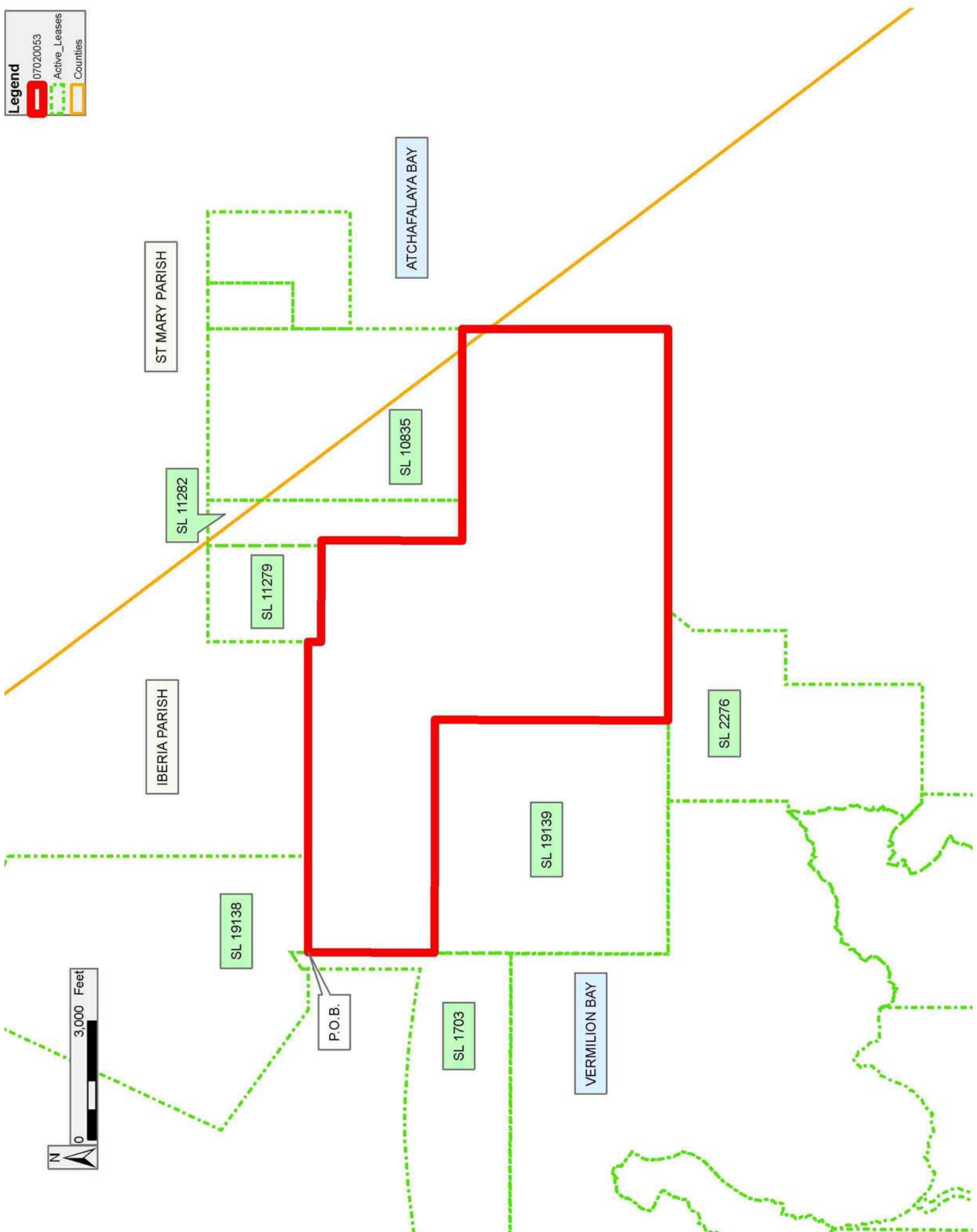
NOTE: All or a portion of this Tract lies within one nautical mile of the boundary of the Russell Sage or Marsh Island Wildlife Refuge and Game Preserve. Any activities connected with this lease conducted within this Tract which may pose potential environmental impacts to the said Wildlife Refuge and Game Preserve should be coordinated with the Louisiana Department of Wildlife and Fisheries.

Applicant: CYPRESS ENERGY CORPORATION

Bidder	Cash Payment	Price/Acre	Rental	Oil	Gas	Other

Legend

-  07020053
-  Active_Leases
-  Counties



TRACT 38892 - St. Mary and Terrebonne Parishes, Louisiana

All of the lands now or formerly constituting the beds and bottoms of all water bodies of every nature and description the title of which vests in the State of Louisiana, together with all islands arising therein and other lands formed by accretion or by reliction, where allowed by law, excepting tax adjudicated lands, and not presently under mineral lease on February 14, 2007, situated in St. Mary and Terrebonne Parishes, Louisiana, and more particularly described as follows: Beginning at a point having Coordinates of X = 2,048,550.00 and Y = 338,450.00; thence North 89 degrees 29 minutes 18 seconds East 5,600.22 feet to a point having a Coordinates of X = 2,054,150.00 and Y = 338,500.00; thence North 88 degrees 55 minutes 45 seconds East 5,350.93 feet to a point having a Coordinates of X = 2,059,500.00 and Y = 338,600.00; thence South 01 degrees 38 minutes 12 seconds East 2,626.07 feet to a point having Coordinates of X = 2,059,575.00 and Y = 335,975.00; thence South 88 degrees 56 minutes 03 seconds West 5,375.93 feet to a point having Coordinates of X = 2,054,200.00 and Y = 335,875.00; thence South 89 degrees 13 minutes 33 seconds West 5,550.51 feet to a point having Coordinates of X = 2,048,650.00 and Y = 335,800.00; thence North 02 degrees 09 minutes 40 seconds West 2,651.89 feet to the point of beginning, containing approximately **304 acres**, all as more particularly outlined on a plat on file in the Office of Mineral Resources, Department of Natural Resources. All bearings, distances and coordinates are based on Louisiana Coordinate System of 1927, (North or South Zone), where applicable.

NOTE: The above description of the Tract nominated for lease has been provided and corrected, where required, exclusively by the nomination party. Any mineral lease selected from this Tract and awarded by the Louisiana State Mineral Board shall be without warranty of any kind, either express, implied, or statutory, including, but not limited to, the implied warranties of merchantability and fitness for a particular purpose. Should the mineral lease awarded by the Louisiana State Mineral Board be subsequently modified, cancelled or abrogated due to the existence of conflicting leases, operating agreements, private claims or other future obligations or conditions which may affect all or any portion of the leased Tract, it shall not relieve the Lessee of the obligation to pay any bonus due thereon to the Louisiana State Mineral Board, nor shall the Louisiana State Mineral Board be obligated to refund any consideration paid by the Lessor prior to such modification, cancellation, or abrogation, including, but not limited to, bonuses, rentals and royalties.

NOTE: The State of Louisiana does hereby reserve, and this lease shall be subject to, the imprescriptible right of surface use in the nature of a servitude in favor of the Department of Natural Resources, including its Offices and Commissions, for the sole purpose of implementing, constructing, servicing and maintaining approved coastal zone management and/or restoration projects. Utilization of any and all rights derived under this lease by the mineral lessee, its agents, successors or assigns,

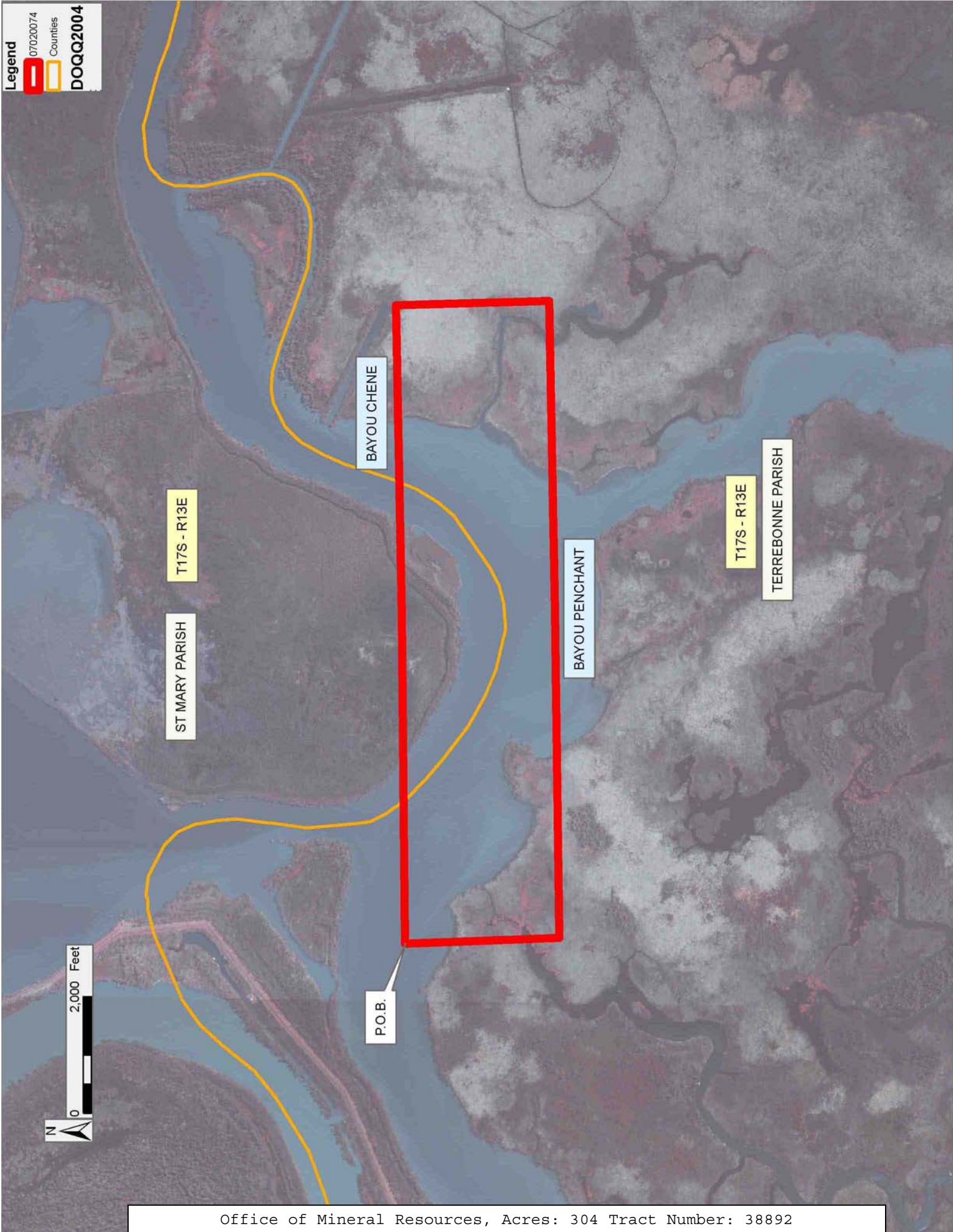
shall not interfere with nor hinder the reasonable surface use by the Department of Natural Resources, its Offices or Commissions, as herein above reserved.

NOTE: The above Tract is located upon a restricted scenic river and all operations in this area must be conducted in strict conformity with the regulations of the Corps of Engineers, U.S. Army.

Applicant: GHJ LAND SERVICES, L.L.C.

Bidder	Cash Payment	Price/Acre	Rental	Oil	Gas	Other

Legend
07020074
Countries
DOQQ2004



TRACT 38893 - Jefferson Parish, Louisiana

All of the lands now or formerly constituting the beds and bottoms of all water bodies of every nature and description the title of which vests in the State of Louisiana, together with all islands arising therein and other lands formed by accretion or by reliction, where allowed by law, excepting tax adjudicated lands, and not presently under mineral lease on February 14, 2007, situated in Jefferson Parish, Louisiana, and more particularly described as follows: Commencing from a point at the most Northeasterly corner of area of said Section 26, T18S R24E, having Coordinates of X = 2,426,981.40 and Y = 306,578.60, said point being the point of beginning; Thence South 01 degrees 02 minutes 04 seconds East a distance of 5,279.16 feet to a point having Coordinates of X = 2,427,076.70 and Y = 301,300.30; Thence South 89 degrees 00 minutes 02 seconds West a distance of 4,877.82 feet to a point on the East line of State Lease No. 4192, having Coordinates of X = 2,422,199.62 and Y = 301,215.22; Thence North along the East line of said State Lease No. 4192 a distance of 2,292.86 feet to a point at the Northeast corner of said State Lease No. 4192, having Coordinates of X = 2,422,199.62 and Y = 303,508.07; Thence West along the North line of said State Lease No. 4192 a distance of 283.63 feet to a point at the Southeast corner of State Lease No. 4972, having Coordinates of X = 2,421,915.99 and Y = 303,508.07; Thence North 00 degrees 53 minutes 00 seconds West along the East line of said State Lease No. 4972 a distance of 2,982.53 feet to a point at the Northeast corner of said State Lease No. 4972, having Coordinates of X = 2,421,870.01 and Y = 306,490.25; Thence North 89 degrees 00 minutes 35 seconds East a distance of 5,112.16 feet to the point of beginning, containing approximately **318 acres**, all as more particularly outlined on a plat on file in the Office of Mineral Resources, Department of Natural Resources. All bearings, distances and coordinates are based on Louisiana Coordinate System of 1927, (North or South Zone), where applicable.

NOTE: The above description of the Tract nominated for lease has been provided and corrected, where required, exclusively by the nomination party. Any mineral lease selected from this Tract and awarded by the Louisiana State Mineral Board shall be without warranty of any kind, either express, implied, or statutory, including, but not limited to, the implied warranties of merchantability and fitness for a particular purpose. Should the mineral lease awarded by the Louisiana State Mineral Board be subsequently modified, cancelled or abrogated due to the existence of conflicting leases, operating agreements, private claims or other future obligations or conditions which may affect all or any portion of the leased Tract, it shall not relieve the Lessee of the obligation to pay any bonus due thereon to the Louisiana State Mineral Board, nor shall the Louisiana State Mineral Board be obligated to refund any consideration paid by the Lessor prior to such modification, cancellation, or abrogation, including, but not limited to, bonuses, rentals and royalties.

NOTE: The State of Louisiana does hereby reserve, and this lease shall be subject to, the imprescriptible right of surface use in the nature of a

servitude in favor of the Department of Natural Resources, including its Offices and Commissions, for the sole purpose of implementing, constructing, servicing and maintaining approved coastal zone management and/or restoration projects. Utilization of any and all rights derived under this lease by the mineral lessee, its agents, successors or assigns, shall not interfere with nor hinder the reasonable surface use by the Department of Natural Resources, its Offices or Commissions, as herein above reserved.

NOTE: The Department of Wildlife and Fisheries has designated certain areas in the coastal waters of the State of Louisiana as Oyster Seed Bed Areas. The exact location of those Seed Bed Areas must be obtained from the Department of Wildlife and Fisheries and any work done under a mineral lease from the State of Louisiana may necessarily be conducted in conformity with the rules and regulations promulgated by the said Department of Wildlife and Fisheries for Oyster Seed Bed Areas.

Applicant: THOMAS M. KILLGORE, JR.

Bidder	Cash Payment	Price/Acre	Rental	Oil	Gas	Other

Legend
Active_Leases
DOQQ2004
07/02/0041

JEFFERSON PARISH

P.O.B.

BAYOU BARATARIA

SL 4972

SL 4192

T18S - R24E



TRACT 38894 - Portion of Block 3, Eugene Island Area, Revised, Iberia Parish, Louisiana

All of the lands now or formerly constituting the beds and bottoms of all water bodies of every nature and description the title of which vests in the State of Louisiana, together with all islands arising therein and other lands formed by accretion or by reliction, where allowed by law, excepting tax adjudicated lands, and not presently under mineral lease on February 14, 2007, situated in Iberia Parish, Louisiana, and more particularly described as follows: Beginning at the Northwest corner of Block 3, Eugene Island Area, Revised, having Coordinates of X = 1,864,800.56 and Y = 297,634.00; thence East 15,022.16 feet along the North line of said Block 3 to its Northeast corner having Coordinates of X = 1,879,822.72 and Y = 297,634.00; thence South 6,621.42 feet along the East line of said Block 3 to a point having Coordinates of X = 1,879,822.72 and Y = 291,012.58; thence West 15,022.16 feet to a point on the West line of said Block 3 having Coordinates of X = 1,864,800.56 and Y = 291,012.58; thence North 6,621.42 feet along the West line of said Block 3 to the point of beginning; containing approximately **2,283.47 acres**, all as more particularly outlined on a plat on file in the Office of Mineral Resources, Department of Natural Resources. All bearings, distances and coordinates are based on Louisiana Coordinate System of 1927, (North or South Zone), where applicable.

NOTE: The above description of the Tract nominated for lease has been provided and corrected, where required, exclusively by the nomination party. Any mineral lease selected from this Tract and awarded by the Louisiana State Mineral Board shall be without warranty of any kind, either express, implied, or statutory, including, but not limited to, the implied warranties of merchantability and fitness for a particular purpose. Should the mineral lease awarded by the Louisiana State Mineral Board be subsequently modified, cancelled or abrogated due to the existence of conflicting leases, operating agreements, private claims or other future obligations or conditions which may affect all or any portion of the leased Tract, it shall not relieve the Lessee of the obligation to pay any bonus due thereon to the Louisiana State Mineral Board, nor shall the Louisiana State Mineral Board be obligated to refund any consideration paid by the Lessor prior to such modification, cancellation, or abrogation, including, but not limited to, bonuses, rentals and royalties.

NOTE: The Office of Mineral Resources will require a minimum bonus of \$300 per acre and a minimum royalty of 25%.

NOTE: The above described tract may be in the vicinity of existing shell reefs where drilling and dredging operations must be conducted in strict conformity with the regulations adopted by the Louisiana Department of Wildlife and Fisheries and/or the U.S. Corps of Engineers, U.S. Army.

NOTE: The State of Louisiana does hereby reserve, and this lease shall be subject to, the imprescriptible right of surface use in the nature of a

servitude in favor of the Department of Natural Resources, including its Offices and Commissions, for the sole purpose of implementing, constructing, servicing and maintaining approved coastal zone management and/or restoration projects. Utilization of any and all rights derived under this lease by the mineral lessee, its agents, successors or assigns, shall not interfere with nor hinder the reasonable surface use by the Department of Natural Resources, its Offices or Commissions, as herein above reserved.

NOTE: The Department of Wildlife and Fisheries has designated certain areas in the coastal waters of the State of Louisiana as Oyster Seed Bed Areas. The exact location of those Seed Bed Areas must be obtained from the Department of Wildlife and Fisheries and any work done under a mineral lease from the State of Louisiana may necessarily be conducted in conformity with the rules and regulations promulgated by the said Department of Wildlife and Fisheries for Oyster Seed Bed Areas.

NOTE: All or a portion of this Tract lies within one nautical mile of the boundary of the Russell Sage or Marsh Island Wildlife Refuge and Game Preserve. Any activities connected with this lease conducted within this Tract which may pose potential environmental impacts to the said Wildlife Refuge and Game Preserve should be coordinated with the Louisiana Department of Wildlife and Fisheries.

Applicant: BARKER ENERGY

Bidder	Cash Payment	Price/Acre	Rental	Oil	Gas	Other

Legend

 07020017

 Blocks



VERMILION BAY

IBERIA PARISH

P.O.B.

EI0002

EUGENE ISLAND AREA, REVISED

EI0004

EI0003

GULF OF MEXICO

TRACT 38895 - Portion of Block 2, Eugene Island Area, Revised, Iberia Parish, Louisiana

All of the lands now or formerly constituting the beds and bottoms of all water bodies of every nature and description the title of which vests in the State of Louisiana, together with all islands arising therein and other lands formed by accretion or by reliction, where allowed by law, excepting tax adjudicated lands, and not presently under mineral lease on February 14, 2007, situated in Iberia Parish, Louisiana, and more particularly described as follows: Beginning at a point on the West line of Block 2, Eugene Island Area, Revised, having Coordinates of X = 1,849,778.40 and Y = 291,012.58; thence East 15,022.16 feet to a point on the East line of said Block 2 having Coordinates of X = 1,864,800.56 and Y = 291,012.58; thence South 6,621.42 feet along the East line of said Block 2 to its Southeast corner having Coordinates of X = 1,864,800.56 and Y = 284,391.16; thence West 15,022.16 feet along the South line of said Block 2 to its Southwest corner having Coordinates of X = 1,849,778.40 and Y = 284,391.16; thence North 6,621.42 feet along the West line of said Block 2 to the point of beginning; containing approximately **2,283.47 acres**, all as more particularly outlined on a plat on file in the Office of Mineral Resources, Department of Natural Resources. All bearings, distances and coordinates are based on Louisiana Coordinate System of 1927, (North or South Zone), where applicable.

NOTE: The above description of the Tract nominated for lease has been provided and corrected, where required, exclusively by the nomination party. Any mineral lease selected from this Tract and awarded by the Louisiana State Mineral Board shall be without warranty of any kind, either express, implied, or statutory, including, but not limited to, the implied warranties of merchantability and fitness for a particular purpose. Should the mineral lease awarded by the Louisiana State Mineral Board be subsequently modified, cancelled or abrogated due to the existence of conflicting leases, operating agreements, private claims or other future obligations or conditions which may affect all or any portion of the leased Tract, it shall not relieve the Lessee of the obligation to pay any bonus due thereon to the Louisiana State Mineral Board, nor shall the Louisiana State Mineral Board be obligated to refund any consideration paid by the Lessor prior to such modification, cancellation, or abrogation, including, but not limited to, bonuses, rentals and royalties.

NOTE: The Office of Mineral Resources will require a minimum bonus of \$300 per acre and a minimum royalty of 25%.

NOTE: The above described tract may be in the vicinity of existing shell reefs where drilling and dredging operations must be conducted in strict conformity with the regulations adopted by the Louisiana Department of Wildlife and Fisheries and/or the U.S. Corps of Engineers, U.S. Army.

NOTE: The State of Louisiana does hereby reserve, and this lease shall be subject to, the imprescriptible right of surface use in the nature of a

servitude in favor of the Department of Natural Resources, including its Offices and Commissions, for the sole purpose of implementing, constructing, servicing and maintaining approved coastal zone management and/or restoration projects. Utilization of any and all rights derived under this lease by the mineral lessee, its agents, successors or assigns, shall not interfere with nor hinder the reasonable surface use by the Department of Natural Resources, its Offices or Commissions, as herein above reserved.

NOTE: The Department of Wildlife and Fisheries has designated certain areas in the coastal waters of the State of Louisiana as Oyster Seed Bed Areas. The exact location of those Seed Bed Areas must be obtained from the Department of Wildlife and Fisheries and any work done under a mineral lease from the State of Louisiana may necessarily be conducted in conformity with the rules and regulations promulgated by the said Department of Wildlife and Fisheries for Oyster Seed Bed Areas.

NOTE: All or a portion of this Tract lies within one nautical mile of the boundary of the Russell Sage or Marsh Island Wildlife Refuge and Game Preserve. Any activities connected with this lease conducted within this Tract which may pose potential environmental impacts to the said Wildlife Refuge and Game Preserve should be coordinated with the Louisiana Department of Wildlife and Fisheries.

Applicant: CYPRESS ENERGY CORPORATION

Bidder	Cash Payment	Price/Acre	Rental	Oil	Gas	Other

Legend

07020018

Blocks

Counties



EI0003

EI0006

EI0002

IBERIA PARISH

GULF OF MEXICO

EI0007

P.O.B.

EI0001

EUGENE ISLAND AREA, REVISED

EI0008

TRACT 38896 - Portion of Block 3, Eugene Island Area, Revised, Iberia Parish, Louisiana

All of the lands now or formerly constituting the beds and bottoms of all water bodies of every nature and description the title of which vests in the State of Louisiana, together with all islands arising therein and other lands formed by accretion or by reliction, where allowed by law, excepting tax adjudicated lands, and not presently under mineral lease on February 14, 2007, situated in Iberia Parish, Louisiana, and more particularly described as follows: Beginning at a point on the West line of Block 3, Eugene Island Area, Revised, having Coordinates of X = 1,864,800.56 and Y = 291,012.58; thence East 15,022.16 feet to a point on the East line of said Block 3 having Coordinates of X = 1,879,822.72 and Y = 291,012.58; thence South 6,621.42 feet along the East line of said Block 3 to its Southeast corner having Coordinates of X = 1,879,822.72 and Y = 284,391.16; thence West 15,022.16 feet along the South line of said Block 3 to its Southwest corner having Coordinates of X = 1,864,800.56 and Y = 284,391.16; thence North 6,621.42 feet along the West line of said Block 3 to the point of beginning; containing approximately **2,283.47 acres**, all as more particularly outlined on a plat on file in the Office of Mineral Resources, Department of Natural Resources. All bearings, distances and coordinates are based on Louisiana Coordinate System of 1927, (North or South Zone), where applicable.

NOTE: The above description of the Tract nominated for lease has been provided and corrected, where required, exclusively by the nomination party. Any mineral lease selected from this Tract and awarded by the Louisiana State Mineral Board shall be without warranty of any kind, either express, implied, or statutory, including, but not limited to, the implied warranties of merchantability and fitness for a particular purpose. Should the mineral lease awarded by the Louisiana State Mineral Board be subsequently modified, cancelled or abrogated due to the existence of conflicting leases, operating agreements, private claims or other future obligations or conditions which may affect all or any portion of the leased Tract, it shall not relieve the Lessee of the obligation to pay any bonus due thereon to the Louisiana State Mineral Board, nor shall the Louisiana State Mineral Board be obligated to refund any consideration paid by the Lessor prior to such modification, cancellation, or abrogation, including, but not limited to, bonuses, rentals and royalties.

NOTE: The Office of Mineral Resources will require a minimum bonus of \$300 per acre and a minimum royalty of 25%.

NOTE: The above described tract may be in the vicinity of existing shell reefs where drilling and dredging operations must be conducted in strict conformity with the regulations adopted by the Louisiana Department of Wildlife and Fisheries and/or the U.S. Corps of Engineers, U.S. Army.

NOTE: The State of Louisiana does hereby reserve, and this lease shall be subject to, the imprescriptible right of surface use in the nature of a

servitude in favor of the Department of Natural Resources, including its Offices and Commissions, for the sole purpose of implementing, constructing, servicing and maintaining approved coastal zone management and/or restoration projects. Utilization of any and all rights derived under this lease by the mineral lessee, its agents, successors or assigns, shall not interfere with nor hinder the reasonable surface use by the Department of Natural Resources, its Offices or Commissions, as herein above reserved.

NOTE: The Department of Wildlife and Fisheries has designated certain areas in the coastal waters of the State of Louisiana as Oyster Seed Bed Areas. The exact location of those Seed Bed Areas must be obtained from the Department of Wildlife and Fisheries and any work done under a mineral lease from the State of Louisiana may necessarily be conducted in conformity with the rules and regulations promulgated by the said Department of Wildlife and Fisheries for Oyster Seed Bed Areas.

Applicant: BARKER ENERGY

Bidder	Cash Payment	Price/Acre	Rental	Oil	Gas	Other

Legend

- 07020015
- Blocks
- Counties

