

TRACT 38877 - St. Bernard Parish, Louisiana

All of the lands now or formerly constituting the beds and bottoms of all water bodies of every nature and description the title of which vests in the State of Louisiana, together with all islands arising therein and other lands formed by accretion or by reliction, where allowed by law, excepting tax adjudicated lands, and not presently under mineral lease on February 14, 2007, situated in St. Bernard Parish, Louisiana, and more particularly described as follows: Beginning at a point having Coordinates of X = 2,583,752.00 and Y = 403,455.00; thence East 7,348.00 feet to a point on the West line of Block 47, Chandeleur Sound Area, having Coordinates of X = 2,591,100.00 and Y = 403,455.00; thence South 6,225.14 feet along the West line of said Block 47 to a point on the North boundary of State Lease No. 18073 having Coordinates of X = 2,591,100.00 and Y = 397,229.86; thence along the boundary of said State Lease No. 18073 the following courses: South 89 degrees 45 minutes 21 seconds West 6,389.06 feet to its Northwest corner having Coordinates of X = 2,584,711.00 and Y = 397,202.64 and South 1,122.64 feet to a point on the North line of Block 73, Chandeleur Sound Area, having Coordinates of X = 2,584,711.00 and Y = 396,080.00; thence West 959.00 feet along the North line of said Block 73 to a point having Coordinates of X = 2,583,752.00 and Y = 396,080.00; thence North 4,199.89 feet to a point on the Eastern boundary of State Lease No. 4909, as amended, having Coordinates of X = 2,583,752.00 and Y = 400,279.89; thence Northerly, along the boundary of said State Lease No. 4909, on an arc to the left having a radius of 1,025.00 feet and a center at X = 2,582,731.54 and Y = 400,376.21 to a point having Coordinates of X = 2,583,752.00 and Y = 400,472.54; thence North 2,982.46 feet to the point of beginning, containing approximately **482 acres**, all as more particularly outlined on a plat on file in the Office of Mineral Resources, Department of Natural Resources. All bearings, distances and coordinates are based on Louisiana Coordinate System of 1927, (North or South Zone), where applicable.

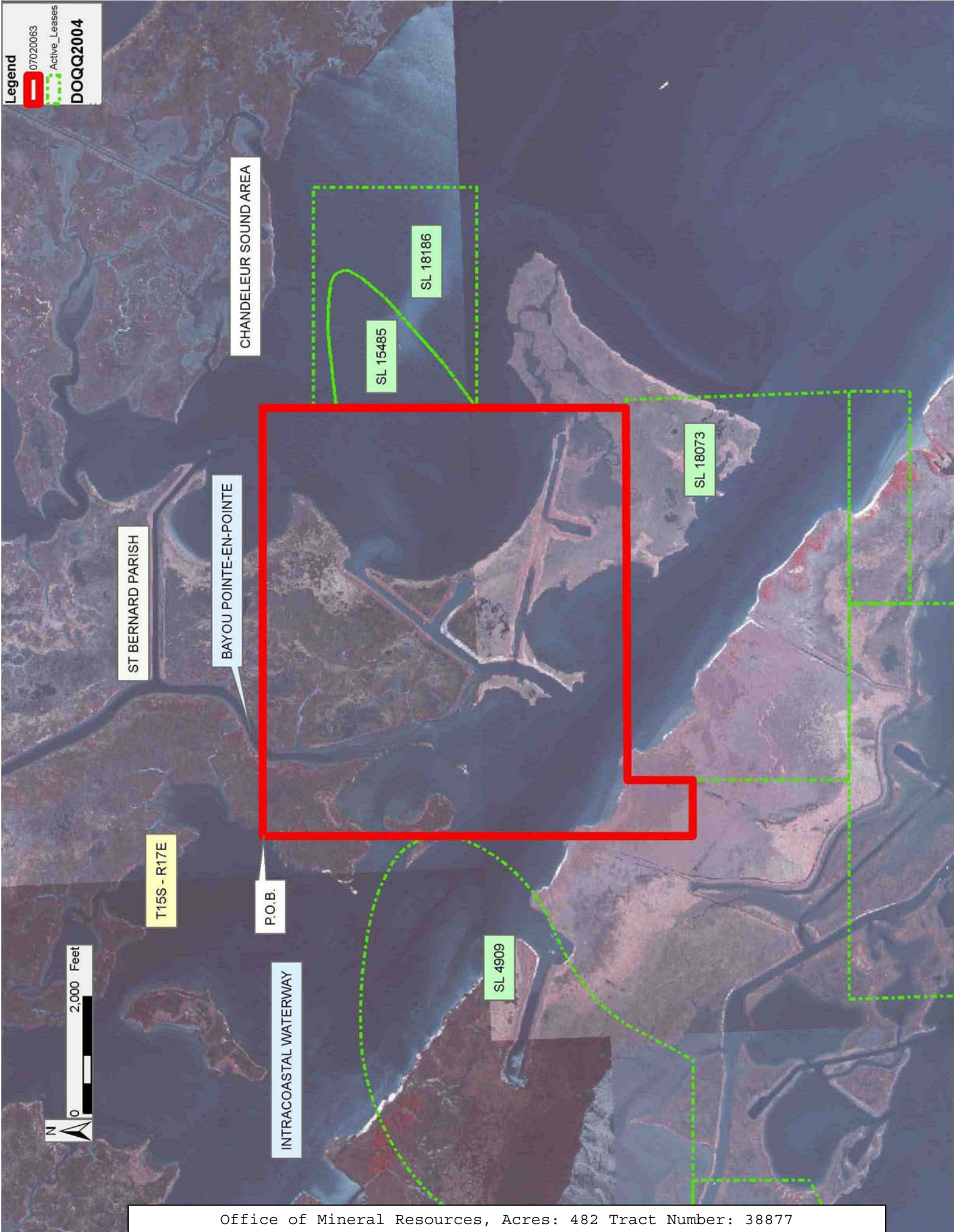
NOTE: The above description of the Tract nominated for lease has been provided and corrected, where required, exclusively by the nomination party. Any mineral lease selected from this Tract and awarded by the Louisiana State Mineral Board shall be without warranty of any kind, either express, implied, or statutory, including, but not limited to, the implied warranties of merchantability and fitness for a particular purpose. Should the mineral lease awarded by the Louisiana State Mineral Board be subsequently modified, cancelled or abrogated due to the existence of conflicting leases, operating agreements, private claims or other future obligations or conditions which may affect all or any portion of the leased Tract, it shall not relieve the Lessee of the obligation to pay any bonus due thereon to the Louisiana State Mineral Board, nor shall the Louisiana State Mineral Board be obligated to refund any consideration paid by the Lessor prior to such modification, cancellation, or abrogation, including, but not limited to, bonuses, rentals and royalties.

NOTE: The State of Louisiana does hereby reserve, and this lease shall be subject to, the imprescriptible right of surface use in the nature of a servitude in favor of the Department of Natural Resources, including its Offices and Commissions, for the sole purpose of implementing, constructing, servicing and maintaining approved coastal zone management and/or restoration projects. Utilization of any and all rights derived under this lease by the mineral lessee, its agents, successors or assigns, shall not interfere with nor hinder the reasonable surface use by the Department of Natural Resources, its Offices or Commissions, as herein above reserved.

NOTE: The Department of Wildlife and Fisheries has designated certain areas in the coastal waters of the State of Louisiana as Oyster Seed Bed Areas. The exact location of those Seed Bed Areas must be obtained from the Department of Wildlife and Fisheries and any work done under a mineral lease from the State of Louisiana may necessarily be conducted in conformity with the rules and regulations promulgated by the said Department of Wildlife and Fisheries for Oyster Seed Bed Areas.

Applicant: STARKS OIL CORPORATION

Bidder	Cash Payment	Price/ Acre	Rental	Oil	Gas	Other



TRACT 38878 - Portion of Block 47, Chandeleur Sound Area, St. Bernard Parish, Louisiana

All of the lands now or formerly constituting the beds and bottoms of all water bodies of every nature and description the title of which vests in the State of Louisiana, together with all islands arising therein and other lands formed by accretion or by reliction, where allowed by law, excepting tax adjudicated lands, and not presently under mineral lease on February 14, 2007, situated in St. Bernard Parish, Louisiana, and more particularly described as follows: Beginning at a point having Coordinates of X = 2,598,475.00 and Y = 403,455.00; thence South 1,455.00 feet to the Northwest corner of State Lease No. 4039, as amended, having Coordinates of X = 2,598,475.00 and Y = 402,000.00; thence South 5,920.00 feet along the West boundary of said State Lease No. 4039 to its Southwest corner, also being a point on the South line of Block 47, Chandeleur Sound Area, having Coordinates of X = 2,598,475.00 and Y = 396,080.00; thence West 7,194.98 feet along the South line of said Block 47 to a point on the East boundary of State Lease No. 18073 having Coordinates of X = 2,591,280.02 and Y = 396,080.00; thence along the boundary of said State Lease No. 18073 the following courses: North 02 degrees 02 minutes 40 seconds West 1,151.18 feet to its Northeast corner having Coordinates of X = 2,591,238.95 and Y = 397,230.45 and South 89 degrees 45 minutes 21 seconds West 138.95 feet to a point on the West line of said Block 47 having Coordinates of X = 2,591,100.00 and Y = 397,229.86; thence North 2,555.14 feet along the West line of said Block 47 to the Southwest corner of State Lease No. 18186 having Coordinates of X = 2,591,100.00 and Y = 399,785.00; thence along the boundary of said State Lease No. 18186 the following courses: East 3,777.51 feet to its Southeast corner having Coordinates of X = 2,594,877.51 and Y = 399,785.00; North 2,805.21 feet to its Northeast corner having Coordinates of X = 2,594,877.51 and Y = 402,590.21 and West 3,777.51 feet to its Northwest corner, also being a point on the West line of said Block 47 having Coordinates of X = 2,591,100.00 and Y = 402,590.21; thence North 864.79 feet along the West line of said Block 47 to a point having Coordinates of X = 2,591,100.00 and Y = 403,455.00; thence East 7,375.00 feet to the point of beginning, containing approximately **799 acres**, all as more particularly outlined on a plat on file in the Office of Mineral Resources, Department of Natural Resources. All bearings, distances and coordinates are based on Louisiana Coordinate System of 1927, (North or South Zone), where applicable.

NOTE: The above description of the Tract nominated for lease has been provided and corrected, where required, exclusively by the nomination party. Any mineral lease selected from this Tract and awarded by the Louisiana State Mineral Board shall be without warranty of any kind, either express, implied, or statutory, including, but not limited to, the implied warranties of merchantability and fitness for a particular purpose. Should the mineral lease awarded by the Louisiana State Mineral Board be subsequently modified, cancelled or abrogated due to the existence of conflicting leases, operating agreements, private claims or other future obligations or conditions which may affect all or any portion

of the leased Tract, it shall not relieve the Lessee of the obligation to pay any bonus due thereon to the Louisiana State Mineral Board, nor shall the Louisiana State Mineral Board be obligated to refund any consideration paid by the Lessor prior to such modification, cancellation, or abrogation, including, but not limited to, bonuses, rentals and royalties.


NOTE: The State of Louisiana does hereby reserve, and this lease shall be subject to, the imprescriptible right of surface use in the nature of a servitude in favor of the Department of Natural Resources, including its Offices and Commissions, for the sole purpose of implementing, constructing, servicing and maintaining approved coastal zone management and/or restoration projects. Utilization of any and all rights derived under this lease by the mineral lessee, its agents, successors or assigns, shall not interfere with nor hinder the reasonable surface use by the Department of Natural Resources, its Offices or Commissions, as herein above reserved.


NOTE: The Department of Wildlife and Fisheries has designated certain areas in the coastal waters of the State of Louisiana as Oyster Seed Bed Areas. The exact location of those Seed Bed Areas must be obtained from the Department of Wildlife and Fisheries and any work done under a mineral lease from the State of Louisiana may necessarily be conducted in conformity with the rules and regulations promulgated by the said Department of Wildlife and Fisheries for Oyster Seed Bed Areas.


Applicant: STARKS OIL CORPORATION

Bidder	Cash Payment	Price/ Acre	Rental	Oil	Gas	Other

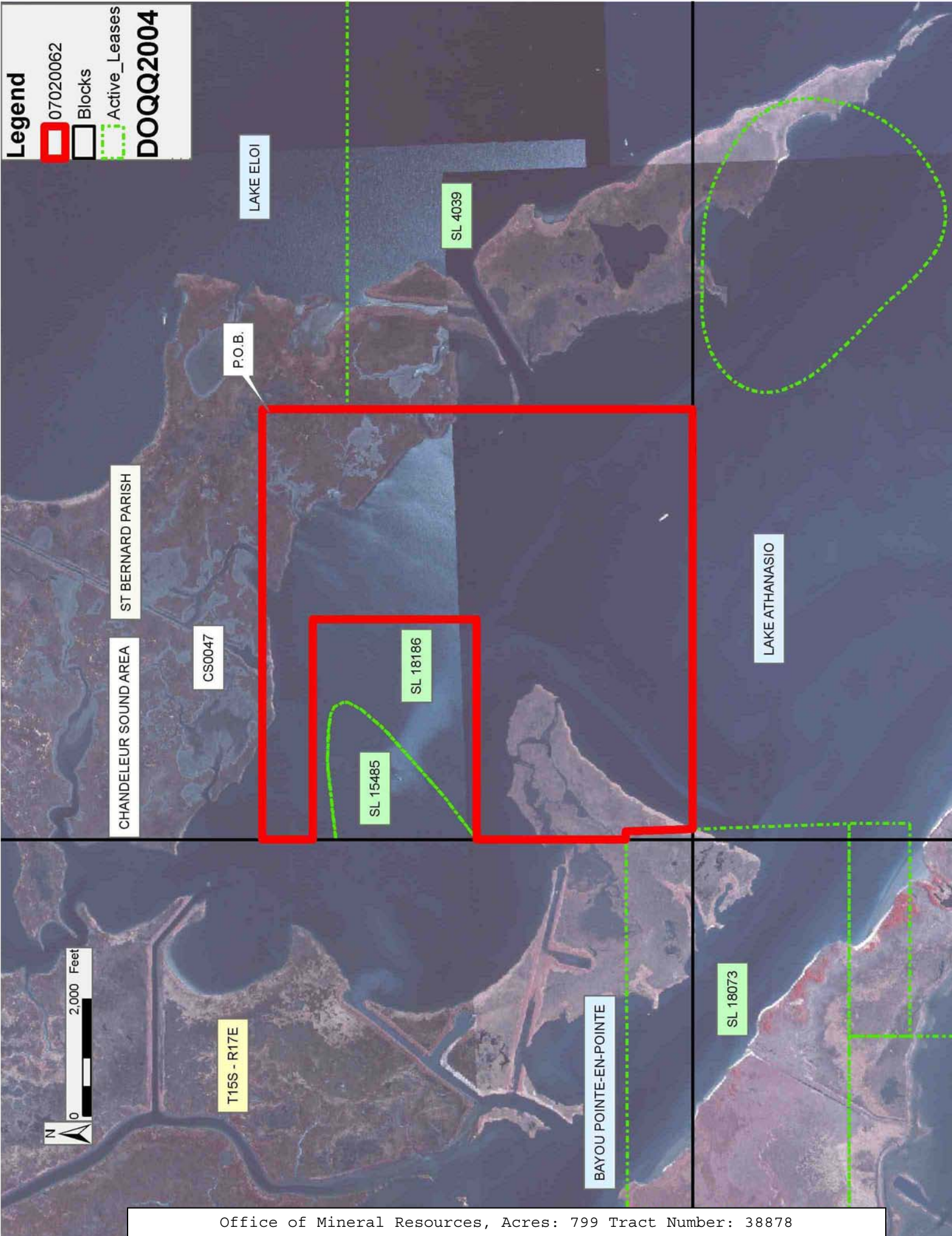
Legend

 07020062

 Blocks

 Active_Leases

DOQQ2004



TRACT 38879 - Lafourche and St. Charles Parishes, Louisiana

All of the lands now or formerly constituting the beds and bottoms of all water bodies of every nature and description the title of which vests in the State of Louisiana, together with all islands arising therein and other lands formed by accretion or by reliction, where allowed by law, excepting tax adjudicated lands, and not presently under mineral lease on February 14, 2007, situated in Lafourche and St. Charles Parishes, Louisiana, and more particularly described as follows: Beginning at a point having Coordinates of X = 2,292,900.00 and Y = 402,000.00; thence North 3,000.00 feet to a point having Coordinates of X = 2,292,900.00 and Y = 405,000.00; thence East 2,450.00 feet to a point having Coordinates of X = 2,295,350.00 and Y = 405,000.00; thence South approximately 1,240 feet to a point on the Western boundary of State Lease No. 348, as amended, thence South approximately 1,311 feet along the Western boundary of said State Lease No. 348, as amended, to a point on its Southern boundary; thence South approximately 449 feet to a point having Coordinates of X = 2,295,350.00 and Y = 402,000.00; thence West 2,450.00 feet to the Point of Beginning, **LESS AND EXCEPT** that portion, if any, of State Lease No. 348, as amended, that may fall within the above described tract, containing approximately **58 acres**, all as more particularly outlined on a plat on file in the Office of Mineral Resources, Department of Natural Resources. All bearings, distances and coordinates are based on Louisiana Coordinate System of 1927, (North or South Zone), where applicable.

NOTE: The above description of the Tract nominated for lease has been provided and corrected, where required, exclusively by the nomination party. Any mineral lease selected from this Tract and awarded by the Louisiana State Mineral Board shall be without warranty of any kind, either express, implied, or statutory, including, but not limited to, the implied warranties of merchantability and fitness for a particular purpose. Should the mineral lease awarded by the Louisiana State Mineral Board be subsequently modified, cancelled or abrogated due to the existence of conflicting leases, operating agreements, private claims or other future obligations or conditions which may affect all or any portion of the leased Tract, it shall not relieve the Lessee of the obligation to pay any bonus due thereon to the Louisiana State Mineral Board, nor shall the Louisiana State Mineral Board be obligated to refund any consideration paid by the Lessor prior to such modification, cancellation, or abrogation, including, but not limited to, bonuses, rentals and royalties.

NOTE: The State of Louisiana does hereby reserve, and this lease shall be subject to, the imprescriptible right of surface use in the nature of a servitude in favor of the Department of Natural Resources, including its Offices and Commissions, for the sole purpose of implementing, constructing, servicing and maintaining approved coastal zone management and/or restoration projects. Utilization of any and all rights derived under this lease by the mineral lessee, its agents, successors or assigns, shall not interfere with nor hinder the reasonable surface use by the

Department of Natural Resources, its Offices or Commissions, as herein above reserved.

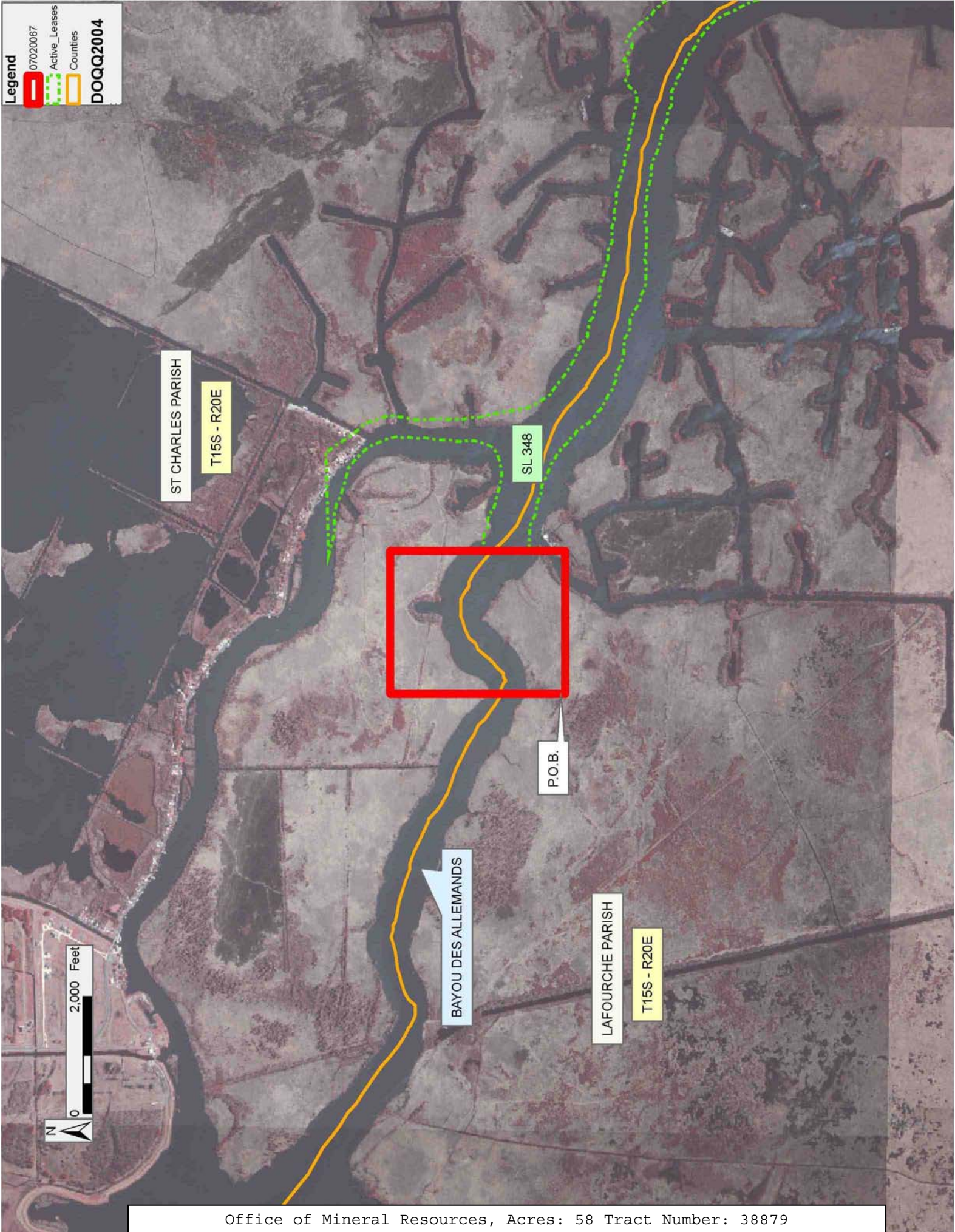
NOTE: The above Tract is located upon a restricted scenic river and all operations in this area must be conducted in strict conformity with the regulations of the Corps of Engineers, U.S. Army.

Applicant: LAFAYETTE LAND SERVICES L.L.C.

Bidder	Cash Payment	Price/ Acre	Rental	Oil	Gas	Other

Legend

- 07020067
- Active_Leases
- Counties
- DOQQ2004



TRACT 38880 - Lafourche and St. Charles Parishes, Louisiana

All of the lands now or formerly constituting the beds and bottoms of all water bodies of every nature and description the title of which vests in the State of Louisiana, together with all islands arising therein and other lands formed by accretion or by reliction, where allowed by law, excepting tax adjudicated lands, and not presently under mineral lease on February 14, 2007, situated in Lafourche and St. Charles Parishes, Louisiana, and more particularly described as follows: Beginning at a point having Coordinates of X = 2,310,300.00 and Y = 398,210.00; thence South 9,410.00 feet to a point having Coordinates of X = 2,310,300.00 and Y = 388,800.00; thence West 6,400.00 feet to a point having Coordinates of X = 2,303,900.00 and Y = 388,800.00; thence North 9,410.00 feet to a point having Coordinates of X = 2,303,900.00 and Y = 398,210.00; thence East approximately 664 feet to the Southwest corner of State Lease No. 348, as amended, thence East approximately 1,007 feet along the Southern boundary of said State Lease No. 348, as amended, to its Southeast corner; thence East approximately 4,729 feet to the Point of Beginning, **LESS AND EXCEPT** that portion, if any, of State Lease No. 348 as amended or the Salvador Wildlife Management Area, that may fall within the above described tract, containing approximately **317 acres**, all as more particularly outlined on a plat on file in the Office of Mineral Resources, Department of Natural Resources. All bearings, distances and coordinates are based on Louisiana Coordinate System of 1927, (North or South Zone), where applicable.

NOTE: The above description of the Tract nominated for lease has been provided and corrected, where required, exclusively by the nomination party. Any mineral lease selected from this Tract and awarded by the Louisiana State Mineral Board shall be without warranty of any kind, either express, implied, or statutory, including, but not limited to, the implied warranties of merchantability and fitness for a particular purpose. Should the mineral lease awarded by the Louisiana State Mineral Board be subsequently modified, cancelled or abrogated due to the existence of conflicting leases, operating agreements, private claims or other future obligations or conditions which may affect all or any portion of the leased Tract, it shall not relieve the Lessee of the obligation to pay any bonus due thereon to the Louisiana State Mineral Board, nor shall the Louisiana State Mineral Board be obligated to refund any consideration paid by the Lessor prior to such modification, cancellation, or abrogation, including, but not limited to, bonuses, rentals and royalties.

NOTE: The mineral lease is located within the Salvador WMA under the jurisdiction of the Louisiana Department of Wildlife and Fisheries which has promulgated rules and regulations for the protection of game and wildlife on the aforesaid Tract and, therefore, shall be subject to said rules and regulations, a copy of which shall be attached to the mineral lease. In addition to the specific rules and regulations applicable, the following shall apply regarding operations under this mineral lease:

1. No activities will be allowed without written authorization from the Louisiana Department of Wildlife and Fisheries.

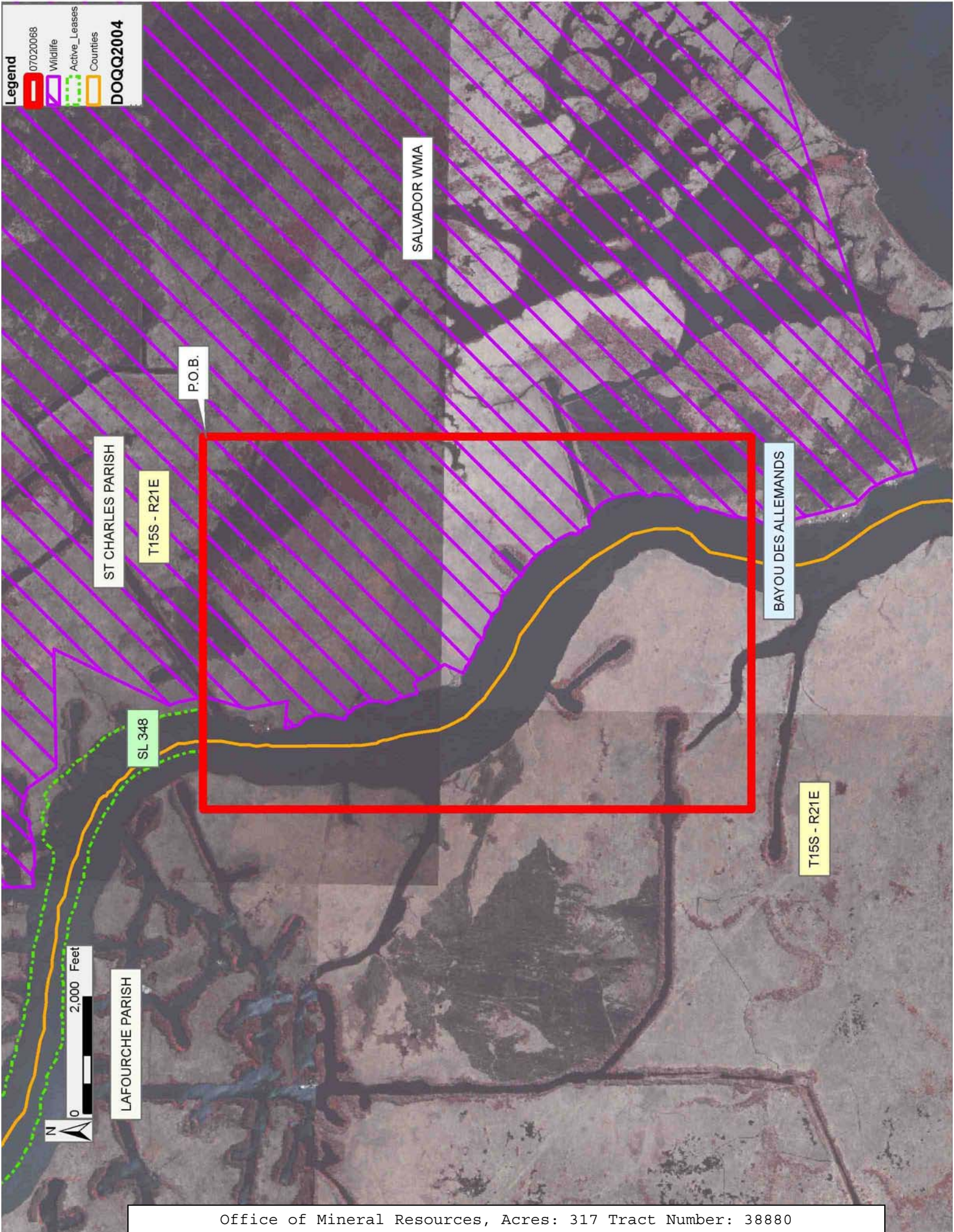
2. Projects will be evaluated on a case by case basis. Modifications to projects may be required including, but not limited to, access routes, spoil placement, well sites, flow lines and other appurtenant structures.
3. Mitigation will be required to offset avoidable wetland impacts.
4. Removal of all structures, facilities and equipment will be required within 120 days of abandonment unless otherwise agreed to by the Louisiana Department of Wildlife and Fisheries.
5. No activities will be allowed during the hunting season unless approved by the Department.
6. Compliance with the said WMA regulations will be required unless otherwise specified by the Department.
7. Prior to submitting applications for wetland permits to Federal and State permitting agencies the lease holder shall coordinate project details with the Louisiana Department of Wildlife and Fisheries, Fur and Refuge Division. Contact person for the Department will be Mike Windham at (504) 568-5886.

NOTE: The State of Louisiana does hereby reserve, and this lease shall be subject to, the imprescriptible right of surface use in the nature of a servitude in favor of the Department of Natural Resources, including its Offices and Commissions, for the sole purpose of implementing, constructing, servicing and maintaining approved coastal zone management and/or restoration projects. Utilization of any and all rights derived under this lease by the mineral lessee, its agents, successors or assigns, shall not interfere with nor hinder the reasonable surface use by the Department of Natural Resources, its Offices or Commissions, as herein above reserved.

NOTE: The above Tract is located upon a restricted scenic river and all operations in this area must be conducted in strict conformity with the regulations of the Corps of Engineers, U.S. Army.

Applicant: LAFAYETTE LAND SERVICES L.L.C.

Bidder	Cash Payment	Price/ Acre	Rental	Oil	Gas	Other



TRACT 38881 - St. Mary Parish, Louisiana

All of the lands now or formerly constituting the beds and bottoms of all water bodies of every nature and description the title of which vests in the State of Louisiana, together with all islands arising therein and other lands formed by accretion or by reliction, where allowed by law, excepting tax adjudicated lands, and not presently under mineral lease on February 14, 2007, situated in St. Mary Parish, Louisiana, and more particularly described as follows: Beginning at a point having Coordinates of X = 2,060,341.97 and Y = 372,095.33 and being a corner of State Lease 18620; thence East along the boundary line of said State Lease No. 18620 a distance of 4,127.03 feet to a point, being a corner of State Lease No. 18620 having Coordinates of X = 2,064,469.00 and Y = 372,095.33; thence continuing East a distance of 4,872.97 feet to a point having Coordinates of X = 2,069,341.97 and Y = 372,095.33; thence South a distance of 6,750 feet to a point having Coordinates of X = 2,069,341.97 and Y = 365,345.33; thence West a distance of 9,000 feet to a point having Coordinates of X = 2,060,341.97 and Y = 365,345.33; thence North a distance of 1,937.67 feet to a corner of State Lease No. 18620 having Coordinates of X = 2,060,341.97 and Y = 367,283.00; thence North along the boundary line of said State Lease No. 18620 a distance of 4,812.33 feet to the point of beginning, containing approximately **84 acres**, all as more particularly outlined on a plat on file in the Office of Mineral Resources, Department of Natural Resources. All bearings, distances and coordinates are based on Louisiana Coordinate System of 1927, (North or South Zone), where applicable.

NOTE: The above description of the Tract nominated for lease has been provided and corrected, where required, exclusively by the nomination party. Any mineral lease selected from this Tract and awarded by the Louisiana State Mineral Board shall be without warranty of any kind, either express, implied, or statutory, including, but not limited to, the implied warranties of merchantability and fitness for a particular purpose. Should the mineral lease awarded by the Louisiana State Mineral Board be subsequently modified, cancelled or abrogated due to the existence of conflicting leases, operating agreements, private claims or other future obligations or conditions which may affect all or any portion of the leased Tract, it shall not relieve the Lessee of the obligation to pay any bonus due thereon to the Louisiana State Mineral Board, nor shall the Louisiana State Mineral Board be obligated to refund any consideration paid by the Lessor prior to such modification, cancellation, or abrogation, including, but not limited to, bonuses, rentals and royalties.

NOTE: The State of Louisiana does hereby reserve, and this lease shall be subject to, the imprescriptible right of surface use in the nature of a servitude in favor of the Department of Natural Resources, including its Offices and Commissions, for the sole purpose of implementing, constructing, servicing and maintaining approved coastal zone management and/or restoration projects. Utilization of any and all rights derived under this lease by the mineral lessee, its agents, successors or assigns,

shall not interfere with nor hinder the reasonable surface use by the Department of Natural Resources, its Offices or Commissions, as herein above reserved.

Applicant: PETROGULF III. L.L.C.

Bidder	Cash Payment	Price/ Acre	Rental	Oil	Gas	Other

Legend

07020057

Active_Leases

Counties

DOQQ2004



TRACT 38882 - St. Mary Parish, Louisiana

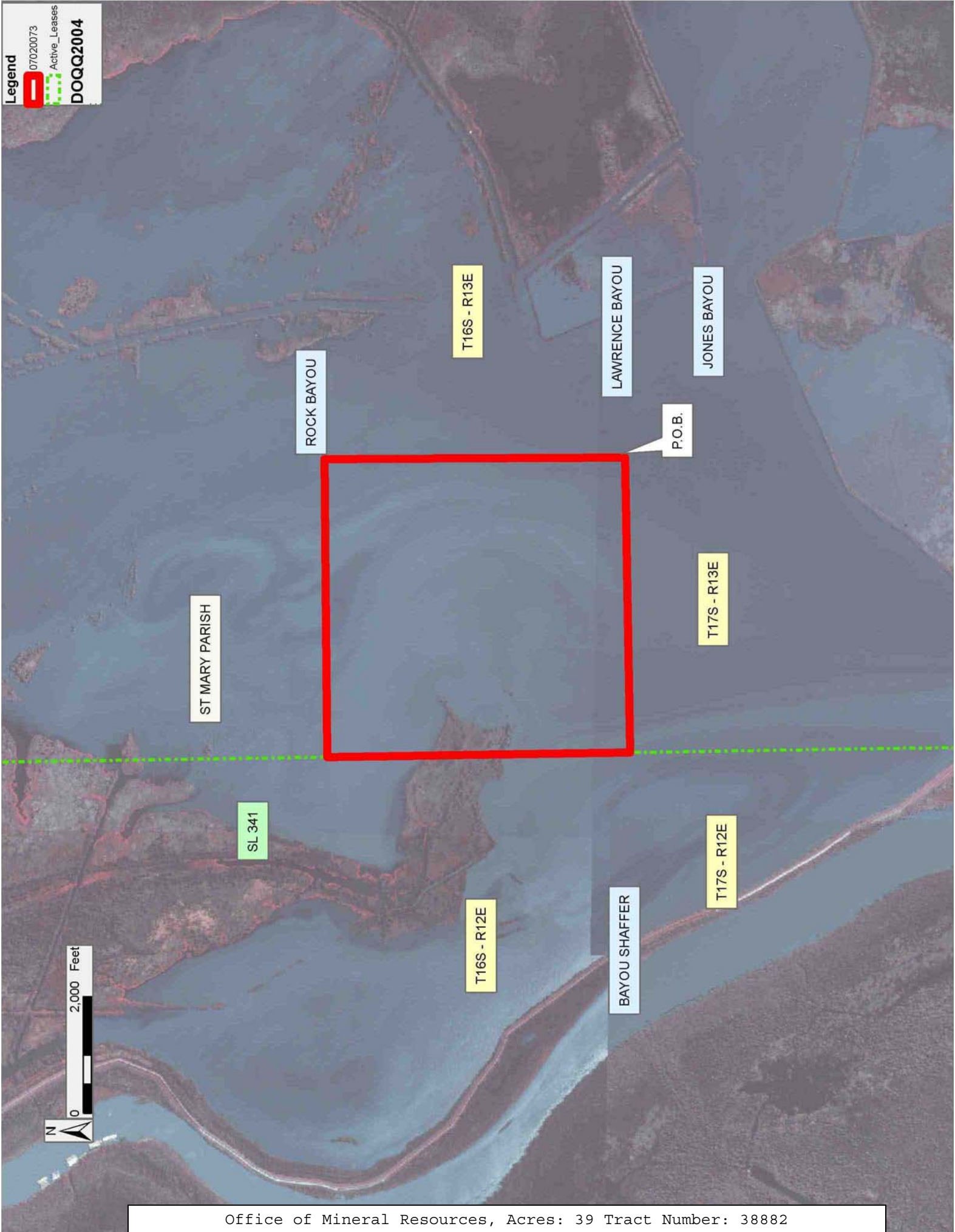
All of the lands now or formerly constituting the beds and bottoms of all water bodies of every nature and description the title of which vests in the State of Louisiana, together with all islands arising therein and other lands formed by accretion or by reliction, where allowed by law, excepting tax adjudicated lands, and not presently under mineral lease on February 14, 2007, situated in St. Mary Parish, Louisiana, and more particularly described as follows: Beginning at a point having Coordinates of X = 2,053,900.00 and Y = 349,250.00; thence South 88 degrees 59 minutes 10 seconds West approximately 5,060 feet to a point on the East boundary of State Lease No. 341, as amended; thence Northerly approximately 5,195 feet along the East boundary of said State Lease No. 341 to a point; thence, leaving said State Lease No. 341, North 89 degrees 29 minutes 27 seconds East approximately 5,113 feet to a point having Coordinates of X = 2,053,875.00 and Y = 354,400.00; thence South 00 degrees 16 minutes 41 seconds East 5,150.06 feet to the point of beginning, **LESS AND EXCEPT** that portion, if any, of State Lease No. 341, as amended, which may lie within the above described tract, containing approximately **39 acres**, all as more particularly outlined on a plat on file in the Office of Mineral Resources, Department of Natural Resources. All bearings, distances and coordinates are based on Louisiana Coordinate System of 1927, (North or South Zone), where applicable.

NOTE: The above description of the Tract nominated for lease has been provided and corrected, where required, exclusively by the nomination party. Any mineral lease selected from this Tract and awarded by the Louisiana State Mineral Board shall be without warranty of any kind, either express, implied, or statutory, including, but not limited to, the implied warranties of merchantability and fitness for a particular purpose. Should the mineral lease awarded by the Louisiana State Mineral Board be subsequently modified, cancelled or abrogated due to the existence of conflicting leases, operating agreements, private claims or other future obligations or conditions which may affect all or any portion of the leased Tract, it shall not relieve the Lessee of the obligation to pay any bonus due thereon to the Louisiana State Mineral Board, nor shall the Louisiana State Mineral Board be obligated to refund any consideration paid by the Lessor prior to such modification, cancellation, or abrogation, including, but not limited to, bonuses, rentals and royalties.

NOTE: The State of Louisiana does hereby reserve, and this lease shall be subject to, the imprescriptible right of surface use in the nature of a servitude in favor of the Department of Natural Resources, including its Offices and Commissions, for the sole purpose of implementing, constructing, servicing and maintaining approved coastal zone management and/or restoration projects. Utilization of any and all rights derived under this lease by the mineral lessee, its agents, successors or assigns, shall not interfere with nor hinder the reasonable surface use by the Department of Natural Resources, its Offices or Commissions, as herein above reserved.

Applicant: GHJ LAND SERVICES, L.L.C.

Bidder	Cash Payment	Price/ Acre	Rental	Oil	Gas	Other



TRACT 38883 - Iberia Parish, Louisiana

All of the lands now or formerly constituting the beds and bottoms of all water bodies of every nature and description the title of which vests in the State of Louisiana, together with all islands arising therein and other lands formed by accretion or by reliction, where allowed by law, excepting tax adjudicated lands, and not presently under mineral lease on February 14, 2007, situated in Iberia Parish, Louisiana, and more particularly described as follows: Beginning at a point having Coordinates of X = 1,871,000.00 and Y = 352,000.00; thence East 10,000.00 feet to a point having Coordinates of X = 1,881,000.00 and Y = 352,000.00; thence South 2,443.00 feet to a point on the boundary of State Lease No. 19138 having Coordinates of X = 1,881,000.00 and Y = 349,557.00; thence along the boundary of said State Lease No. 19138 the following courses and distances: North 65 degrees 56 minutes 31 seconds West 4,010.68 feet, South 25 degrees 04 minutes 28 seconds West 7,746.00 feet and South 54 degrees 08 minutes 23 seconds East 3,757.18 feet to its most Southern Southwest corner having Coordinates of X = 1,877,100.00 and Y = 341,975.00; thence West 6,100.00 feet to a point having Coordinates of X = 1,871,000.00 and Y = 341,975.00; thence North 10,025.00 feet to the point of beginning, containing approximately **1,241.93 acres**, all as more particularly outlined on a plat on file in the Office of Mineral Resources, Department of Natural Resources. All bearings, distances and coordinates are based on Louisiana Coordinate System of 1927, (North or South Zone), where applicable.

NOTE: The above description of the Tract nominated for lease has been provided and corrected, where required, exclusively by the nomination party. Any mineral lease selected from this Tract and awarded by the Louisiana State Mineral Board shall be without warranty of any kind, either express, implied, or statutory, including, but not limited to, the implied warranties of merchantability and fitness for a particular purpose. Should the mineral lease awarded by the Louisiana State Mineral Board be subsequently modified, cancelled or abrogated due to the existence of conflicting leases, operating agreements, private claims or other future obligations or conditions which may affect all or any portion of the leased Tract, it shall not relieve the Lessee of the obligation to pay any bonus due thereon to the Louisiana State Mineral Board, nor shall the Louisiana State Mineral Board be obligated to refund any consideration paid by the Lessor prior to such modification, cancellation, or abrogation, including, but not limited to, bonuses, rentals and royalties.

NOTE: The State of Louisiana does hereby reserve, and this lease shall be subject to, the imprescriptible right of surface use in the nature of a servitude in favor of the Department of Natural Resources, including its Offices and Commissions, for the sole purpose of implementing, constructing, servicing and maintaining approved coastal zone management and/or restoration projects. Utilization of any and all rights derived under this lease by the mineral lessee, its agents, successors or assigns, shall not interfere with nor hinder the reasonable surface use by the

Department of Natural Resources, its Offices or Commissions, as herein above reserved.

NOTE: The Department of Wildlife and Fisheries has designated certain areas in the coastal waters of the State of Louisiana as Oyster Seed Bed Areas. The exact location of those Seed Bed Areas must be obtained from the Department of Wildlife and Fisheries and any work done under a mineral lease from the State of Louisiana may necessarily be conducted in conformity with the rules and regulations promulgated by the said Department of Wildlife and Fisheries for Oyster Seed Bed Areas.

Applicant: CYPRESS ENERGY CORPORATION

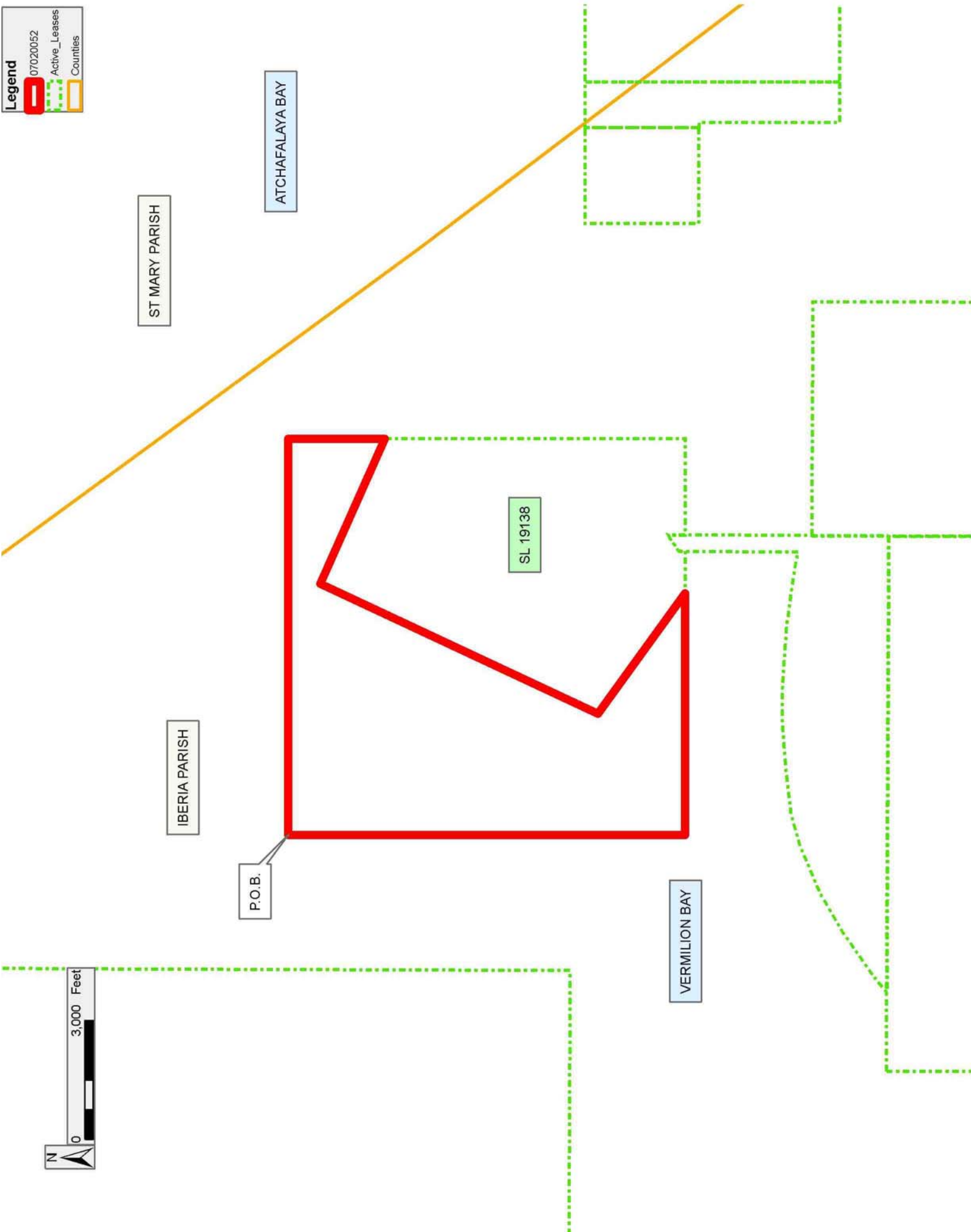
Bidder	Cash Payment	Price/ Acre	Rental	Oil	Gas	Other

Legend

 07020052

 Active_Leases

 Counties



TRACT 38884 - Iberia and St. Mary Parishes, Louisiana

All of the lands now or formerly constituting the beds and bottoms of all water bodies of every nature and description the title of which vests in the State of Louisiana, together with all islands arising therein and other lands formed by accretion or by reliction, where allowed by law, excepting tax adjudicated lands, and not presently under mineral lease on February 14, 2007, situated in Iberia and St. Mary Parishes, Louisiana, and more particularly described as follows: Beginning at a point having Coordinates of X = 1,881,000.00 and Y = 352,000.00; thence East 11,000.00 feet to a point having Coordinates of X = 1,892,000.00 and Y = 352,000.00; thence South 7,491.23 feet to a point on the Northern boundary line of State Lease No. 10835 having Coordinates of X = 1,892,000.00 and Y = 344,508.77; thence West 2,000.00 feet along the Northern boundary line of said State Lease No. 10835 to its Northwest corner and the Northeast corner of State Lease No. 11282 having Coordinates of X = 1,890,000.00 and Y = 344,508.77; thence West 1,150.00 feet along the Northern boundary line of said State Lease No. 11282 to its Northwest corner and the Northeast corner of State Lease No. 11279 as amended, having Coordinates of X = 1,888,850.00 and Y = 344,508.77; thence along the boundary of said State Lease No. 11279 the following courses and distances: West 2,425.80 feet and South 00 degrees 00 minutes 31 seconds East 2,533.77 feet to a point having Coordinates of X = 1,886,424.57 and Y = 341,975.00; thence West 5,424.57 feet to the Southeast corner of State Lease No. 19138 having Coordinates of X = 1,881,000.00 and Y = 341,975.00; thence North 7,582.00 feet along the East line of said State Lease No. 19138 to a point having Coordinates of X = 1,881,000.00 and Y = 349,557.00; thence North 2,443.00 feet to the point of beginning, containing approximately **2,207.25 acres**, all as more particularly outlined on a plat on file in the Office of Mineral Resources, Department of Natural Resources. All bearings, distances and coordinates are based on Louisiana Coordinate System of 1927, (North or South Zone), where applicable.

NOTE: The above description of the Tract nominated for lease has been provided and corrected, where required, exclusively by the nomination party. Any mineral lease selected from this Tract and awarded by the Louisiana State Mineral Board shall be without warranty of any kind, either express, implied, or statutory, including, but not limited to, the implied warranties of merchantability and fitness for a particular purpose. Should the mineral lease awarded by the Louisiana State Mineral Board be subsequently modified, cancelled or abrogated due to the existence of conflicting leases, operating agreements, private claims or other future obligations or conditions which may affect all or any portion of the leased Tract, it shall not relieve the Lessee of the obligation to pay any bonus due thereon to the Louisiana State Mineral Board, nor shall the Louisiana State Mineral Board be obligated to refund any consideration paid by the Lessor prior to such modification, cancellation, or abrogation, including, but not limited to, bonuses, rentals and royalties.

NOTE: The State of Louisiana does hereby reserve, and this lease shall be subject to, the imprescriptible right of surface use in the nature of a servitude in favor of the Department of Natural Resources, including its Offices and Commissions, for the sole purpose of implementing, constructing, servicing and maintaining approved coastal zone management and/or restoration projects. Utilization of any and all rights derived under this lease by the mineral lessee, its agents, successors or assigns, shall not interfere with nor hinder the reasonable surface use by the Department of Natural Resources, its Offices or Commissions, as herein above reserved.

NOTE: The Department of Wildlife and Fisheries has designated certain areas in the coastal waters of the State of Louisiana as Oyster Seed Bed Areas. The exact location of those Seed Bed Areas must be obtained from the Department of Wildlife and Fisheries and any work done under a mineral lease from the State of Louisiana may necessarily be conducted in conformity with the rules and regulations promulgated by the said Department of Wildlife and Fisheries for Oyster Seed Bed Areas.

Applicant: CYPRESS ENERGY CORPORATION

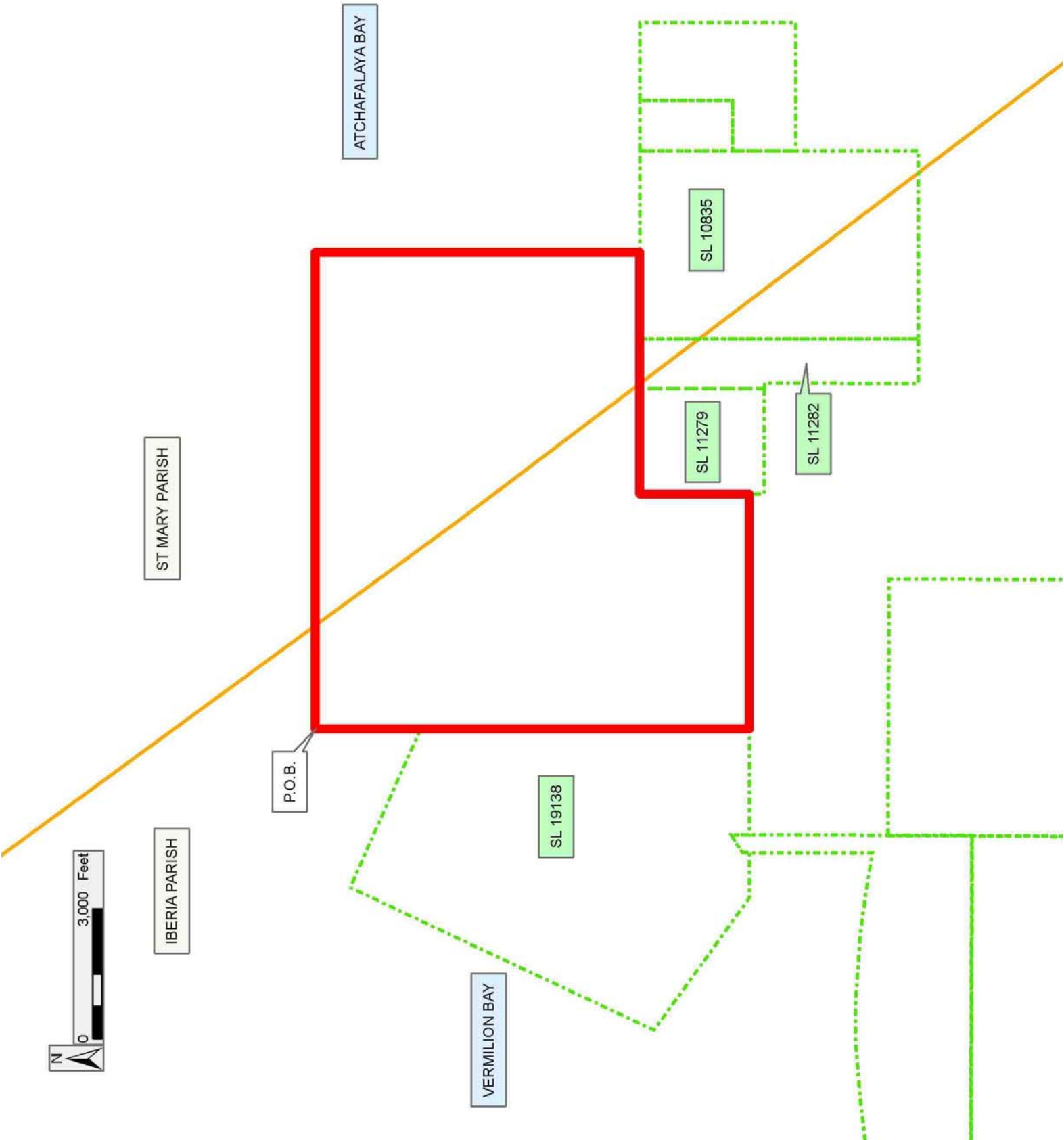
Bidder	Cash Payment	Price/ Acre	Rental	Oil	Gas	Other

Legend

07020054

Active_Leases

Counties



TRACT 38885 - St. Mary Parish, Louisiana

All of the lands now or formerly constituting the beds and bottoms of all water bodies of every nature and description the title of which vests in the State of Louisiana, together with all islands arising therein and other lands formed by accretion or by reliction, where allowed by law, excepting tax adjudicated lands, and not presently under mineral lease on February 14, 2007, situated in St. Mary Parish, Louisiana, and more particularly described as follows: Beginning at a point having Coordinates of X = 2,053,900.00 and Y = 349,250.00; thence South 00 degrees 32 minutes 08 seconds East 5,350.23 feet to a point having Coordinates of X = 2,053,950.00 and Y = 343,900.00; thence South 88 degrees 58 minutes 37 seconds West approximately 5,028 feet to a point on the East boundary of State Lease No. 341, as amended; thence Northerly approximately 5,351 feet along the East boundary of said State Lease No. 341 to a point; thence, leaving said State Lease No. 341, North 88 degrees 59 minutes 09 seconds East approximately 5,060 feet to the point of beginning, **LESS AND EXCEPT** that portion, if any, of State Lease No. 341, as amended, which may lie within the above described tract, containing approximately **42 acres**, all as more particularly outlined on a plat on file in the Office of Mineral Resources, Department of Natural Resources. All bearings, distances and coordinates are based on Louisiana Coordinate System of 1927, (North or South Zone), where applicable.

NOTE: The above description of the Tract nominated for lease has been provided and corrected, where required, exclusively by the nomination party. Any mineral lease selected from this Tract and awarded by the Louisiana State Mineral Board shall be without warranty of any kind, either express, implied, or statutory, including, but not limited to, the implied warranties of merchantability and fitness for a particular purpose. Should the mineral lease awarded by the Louisiana State Mineral Board be subsequently modified, cancelled or abrogated due to the existence of conflicting leases, operating agreements, private claims or other future obligations or conditions which may affect all or any portion of the leased Tract, it shall not relieve the Lessee of the obligation to pay any bonus due thereon to the Louisiana State Mineral Board, nor shall the Louisiana State Mineral Board be obligated to refund any consideration paid by the Lessor prior to such modification, cancellation, or abrogation, including, but not limited to, bonuses, rentals and royalties.


NOTE: The State of Louisiana does hereby reserve, and this lease shall be subject to, the imprescriptible right of surface use in the nature of a servitude in favor of the Department of Natural Resources, including its Offices and Commissions, for the sole purpose of implementing, constructing, servicing and maintaining approved coastal zone management and/or restoration projects. Utilization of any and all rights derived under this lease by the mineral lessee, its agents, successors or assigns, shall not interfere with nor hinder the reasonable surface use by the Department of Natural Resources, its Offices or Commissions, as herein above reserved.


Applicant: GHJ LAND SERVICES L.L.C.

Bidder	Cash Payment	Price/ Acre	Rental	Oil	Gas	Other

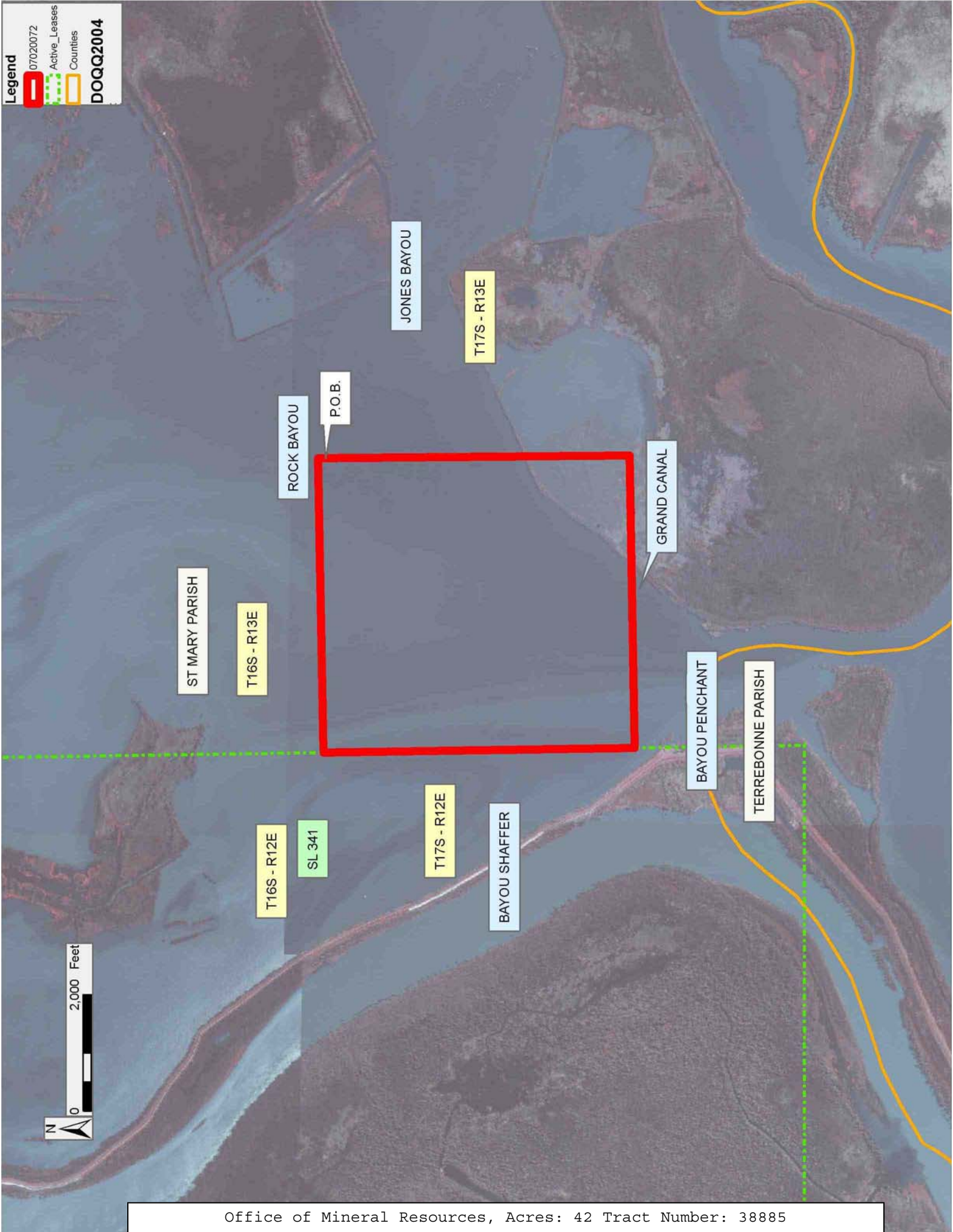
Legend

 07/02/20072

 Active_Leases

 Counties

DOQQ2004



TRACT 38886 - St. Mary Parish, Louisiana

All of the lands now or formerly constituting the beds and bottoms of all water bodies of every nature and description the title of which vests in the State of Louisiana, together with all islands arising therein and other lands formed by accretion or by reliction, where allowed by law, excepting tax adjudicated lands, and not presently under mineral lease on February 14, 2007, situated in St. Mary Parish, Louisiana, and more particularly described as follows: Beginning at a point having Coordinates of X = 1,892,000.00 and Y = 349,013.50; thence East 18,475.00 feet to a point having Coordinates of X = 1,910,475.00 and Y = 349,013.50; thence South 6,513.50 feet to a point on the North line of State Lease No. 16381 having Coordinates of X = 1,910,475.00 and Y = 342,500.00; thence West 7,475.00 feet along the North line of said State Lease No. 16381 to its Northwest corner having Coordinates of X = 1,903,000.00 and Y = 342,500.00; thence North 2,008.77 feet to a point having Coordinates of X = 1,903,000.00 and Y = 344,508.77; thence West 5,700.00 feet to the Northeast corner of State Lease No. 12897 having Coordinates of X = 1,897,300.00 and Y = 344,508.77; thence West 1,800.00 feet along the North line of said State Lease No. 12897 to its Northwest corner, also being the Northeast corner of State Lease No. 13403 having Coordinates of X = 1,895,500.00 and Y = 344,508.77; thence West 1,159.28 feet along the North line of said State Lease No. 13403 to its Northwest corner, also being the Northeast corner of State Lease No. 10835 having Coordinates of X = 1,894,340.72 and Y = 344,508.77; thence West 2,340.72 feet along the North line of said State Lease No. 10835 to a point having Coordinates of X = 1,892,000.00 and Y = 344,508.77; thence North 4,504.73 feet to the point of beginning, containing approximately **2,255.29 acres**, all as more particularly outlined on a plat on file in the Office of Mineral Resources, Department of Natural Resources. All bearings, distances and coordinates are based on Louisiana Coordinate System of 1927, (North or South Zone), where applicable.

NOTE: The above description of the Tract nominated for lease has been provided and corrected, where required, exclusively by the nomination party. Any mineral lease selected from this Tract and awarded by the Louisiana State Mineral Board shall be without warranty of any kind, either express, implied, or statutory, including, but not limited to, the implied warranties of merchantability and fitness for a particular purpose. Should the mineral lease awarded by the Louisiana State Mineral Board be subsequently modified, cancelled or abrogated due to the existence of conflicting leases, operating agreements, private claims or other future obligations or conditions which may affect all or any portion of the leased Tract, it shall not relieve the Lessee of the obligation to pay any bonus due thereon to the Louisiana State Mineral Board, nor shall the Louisiana State Mineral Board be obligated to refund any consideration paid by the Lessor prior to such modification, cancellation, or abrogation, including, but not limited to, bonuses, rentals and royalties.

NOTE: The State of Louisiana does hereby reserve, and this lease shall be subject to, the imprescriptible right of surface use in the nature of a servitude in favor of the Department of Natural Resources, including its Offices and Commissions, for the sole purpose of implementing, constructing, servicing and maintaining approved coastal zone management and/or restoration projects. Utilization of any and all rights derived under this lease by the mineral lessee, its agents, successors or assigns, shall not interfere with nor hinder the reasonable surface use by the Department of Natural Resources, its Offices or Commissions, as herein above reserved.

NOTE: The Department of Wildlife and Fisheries has designated certain areas in the coastal waters of the State of Louisiana as Oyster Seed Bed Areas. The exact location of those Seed Bed Areas must be obtained from the Department of Wildlife and Fisheries and any work done under a mineral lease from the State of Louisiana may necessarily be conducted in conformity with the rules and regulations promulgated by the said Department of Wildlife and Fisheries for Oyster Seed Bed Areas.

Applicant: CYPRESS ENERGY CORPORATION

Bidder	Cash Payment	Price/ Acre	Rental	Oil	Gas	Other

Legend

- 07020056
- Active_Leases
- Counties

