

**TRACT 38862 - Portion of Blocks 10, and 9, Eugene Island Area, Revised, Iberia Parish, Louisiana**

The beds and bottoms of all water bodies belonging to the State of Louisiana located in Blocks 10, and 9, Eugene Island Area, Revised, together with any present lands formed by accretion to the shoreline or islands formed therein, located in Iberia Parish, Louisiana, owned by and not presently under mineral lease as of February 14, 2007, from the State of Louisiana, the geographical area of which is more fully described as follows: Beginning at the Southeast corner of State Lease No. 19152 having Coordinates of X = 1,849,778.40 and Y = 268,827.19; thence North 1,065.39 feet along the East boundary of said State Lease No. 19152 to the Northwest corner of Block 10, Eugene Island Area, Revised, also being Southwest corner of State Lease No. 17695 having Coordinates of X = 1,849,778.40 and Y = 269,892.58; thence East 4,000.00 feet along the South boundary of said State Lease No. 17695 to its Southeast corner having Coordinates of X = 1,853,778.40 and Y = 269,892.58; thence continue East 4,755.60 feet along the North line of said Block 10 to a point having Coordinates of X = 1,858,534.00 and Y = 269,892.58; thence South 4,261.65 feet to a point on the Three Mile Line, as decreed by the Supreme Court of the United States, as determined by a Special Master appointed therein, in litigation styled *United States v. State of Louisiana et al No. 9 Original*, in 1975, having Coordinates of X = 1,858,534.00 and Y = 265,630.93; thence along said Three Mile Line the following courses: along an arc to the right having a radius of 18,240.60 feet and center at X = 1,843,467 and Y = 275,912 to a point having Coordinates of X = 1,848,729 and Y = 258,447; and then along an arc to the right having a radius of 18,240.60 feet and center at X = 1,835,344 and Y = 270,839 to a point having Coordinates of X = 1,847,078.40 and Y = 256,873.61; thence North 11,953.58 feet to a point on the South boundary of said State Lease No. 19152 having Coordinates of X = 1,847,078.40 and Y = 268,827.19; thence East 2,700.00 feet along the South boundary of said State Lease No. 19152 to the point of beginning; containing approximately **2,361.54 acres, LESS AND EXCEPT** that portion thereof, if any, lying seaward of the line three nautical miles from the coast line of Louisiana, as said three mile line has been decreed by the Supreme Court of the United States, as determined by a Special Master appointed therein, in litigation styled **United States v. State of Louisiana et al No. 9 Original**, in 1975, all as more particularly outlined on a plat in the Office of Mineral Resources, Department of Natural Resources. All bearings, distances and coordinates are based on the Louisiana Coordinate System of 1927, (South Zone).

NOTE: The above description of the Tract nominated for lease has been provided and corrected, where required, exclusively by the nomination party. Any mineral lease selected from this Tract and awarded by the Louisiana State Mineral Board shall be without warranty of any kind, either express, implied, or statutory, including, but not limited to, the implied warranties of merchantability and fitness for a particular purpose. Should the mineral lease awarded by the Louisiana State Mineral Board be subsequently modified, cancelled or abrogated due to the

existence of conflicting leases, operating agreements, private claims or other future obligations or conditions which may affect all or any portion of the leased Tract, it shall not relieve the Lessee of the obligation to pay any bonus due thereon to the Louisiana State Mineral Board, nor shall the Louisiana State Mineral Board be obligated to refund any consideration paid by the Lessor prior to such modification, cancellation, or abrogation, including, but not limited to, bonuses, rentals and royalties.

NOTE: The Office of Mineral Resources will require a minimum bonus of \$300 per acre and a minimum royalty of 25%.

NOTE: The State of Louisiana does hereby reserve, and this lease shall be subject to, the imprescriptible right of surface use in the nature of a servitude in favor of the Department of Natural Resources, including its Offices and Commissions, for the sole purpose of implementing, constructing, servicing and maintaining approved coastal zone management and/or restoration projects. Utilization of any and all rights derived under this lease by the mineral lessee, its agents, successors or assigns, shall not interfere with nor hinder the reasonable surface use by the Department of Natural Resources, its Offices or Commissions, as herein above reserved.

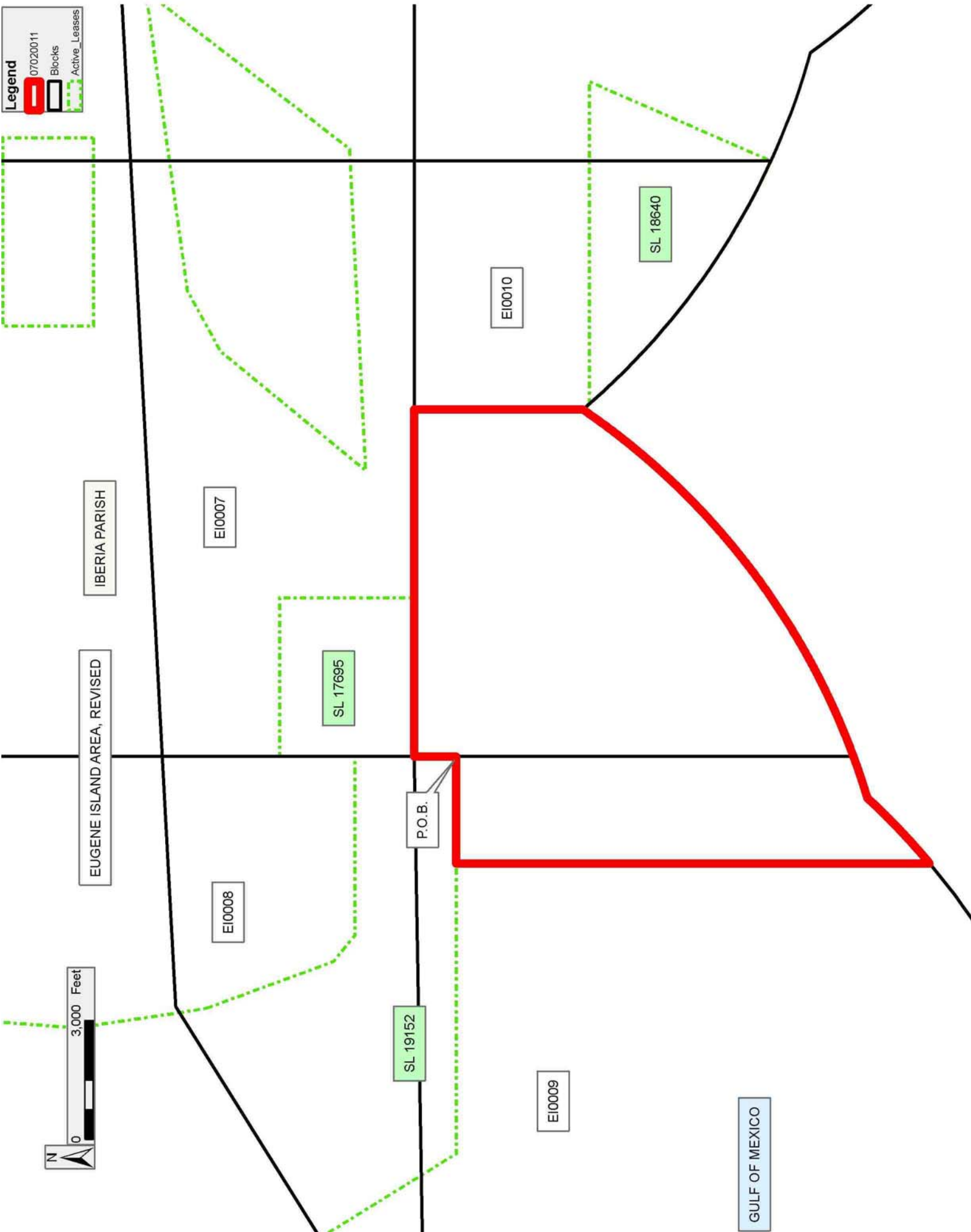
NOTE: The Department of Wildlife and Fisheries has designated certain areas in the coastal waters of the State of Louisiana as Oyster Seed Bed Areas. The exact location of those Seed Bed Areas must be obtained from the Department of Wildlife and Fisheries and any work done under a mineral lease from the State of Louisiana may necessarily be conducted in conformity with the rules and regulations promulgated by the said Department of Wildlife and Fisheries for Oyster Seed Bed Areas.

Applicant: CYPRESS ENERGY CORPORATION

Bidder	Cash Payment	Price/Acre	Rental	Oil	Gas	Other

**Legend**

- 07020011
- Blocks
- Active\_Leases



**TRACT 38863 - Portion of Blocks 70, and 71, Main Pass Area, Revised, Plaquemines Parish, Louisiana**

The beds and bottoms of all water bodies belonging to the State of Louisiana located in Blocks 70, and 71, Main Pass Area, Revised, together with any present lands formed by accretion to the shoreline or islands formed therein, located in Plaquemines Parish, Louisiana, owned by and not presently under mineral lease as of February 14, 2007, from the State of Louisiana, the geographical area of which is more fully described as follows: Beginning at a point in Block 70 Main Pass Area and the Southeast corner of State Lease No. 17815 having Coordinates of X = 2,745,977.50 and Y = 218,325.00; thence North 2,319.35 feet along the East line of said State Lease No. 17815 to a point having Coordinates of X = 2,745,977.50 and Y = 220,644.35; thence East 15,802.50 feet through the East line of said Block 70 into Block 71 Main Pass Area to a point on its East line and the West line of State Lease No. 6894 having Coordinates of X = 2,761,780.00 and Y = 220,644.35; thence South 5,672.35 feet along the East line of said Block 71 and the West line of said State Lease No. 6894 to its Southwest corner having Coordinates of X = 2,761,780.00 and Y = 214,972.00; thence West 72.00 feet along the South line of said Block 71 to the Northeast corner of State Lease No. 15386, as amended having Coordinates of X = 2,761,708.00 and Y = 214,972.00; thence continue West 4,729.00 feet along the South line of said Block 71 and the North line of said State Lease No. 15386 to its Northwest corner having Coordinates of X = 2,756,979.00 and Y = 214,972.00; thence continue West 13,679.00 feet along the South line of said Block 71 through its Southwest corner into said Block 70 along its South line to a point having Coordinates of X = 2,743,300.00 and Y = 214,972.00; thence North 3,353.00 feet to a point on the South line of said State Lease No. 17815 having Coordinates of X = 2,743,300.00 and Y = 218,325.00; thence East 2,677.50 feet along the South line of said State Lease No. 17815 to the Point of Beginning, containing approximately **2,263.89 acres**, all as more particularly outlined on a plat on file in the Office of Mineral Resources, Department of Natural Resources. All bearings, distances and coordinates are based on Louisiana Coordinate System of 1927, (North or South Zone).

NOTE: The above description of the Tract nominated for lease has been provided and corrected, where required, exclusively by the nomination party. Any mineral lease selected from this Tract and awarded by the Louisiana State Mineral Board shall be without warranty of any kind, either express, implied, or statutory, including, but not limited to, the implied warranties of merchantability and fitness for a particular purpose. Should the mineral lease awarded by the Louisiana State Mineral Board be subsequently modified, cancelled or abrogated due to the existence of conflicting leases, operating agreements, private claims or other future obligations or conditions which may affect all or any portion of the leased Tract, it shall not relieve the Lessee of the obligation to pay any bonus due thereon to the Louisiana State Mineral Board, nor shall the Louisiana State Mineral Board be obligated to refund any consideration

paid by the Lessor prior to such modification, cancellation, or abrogation, including, but not limited to, bonuses, rentals and royalties.

NOTE: The Office of Mineral Resources will require a minimum bonus of \$200 per acre and a minimum royalty of 22%.

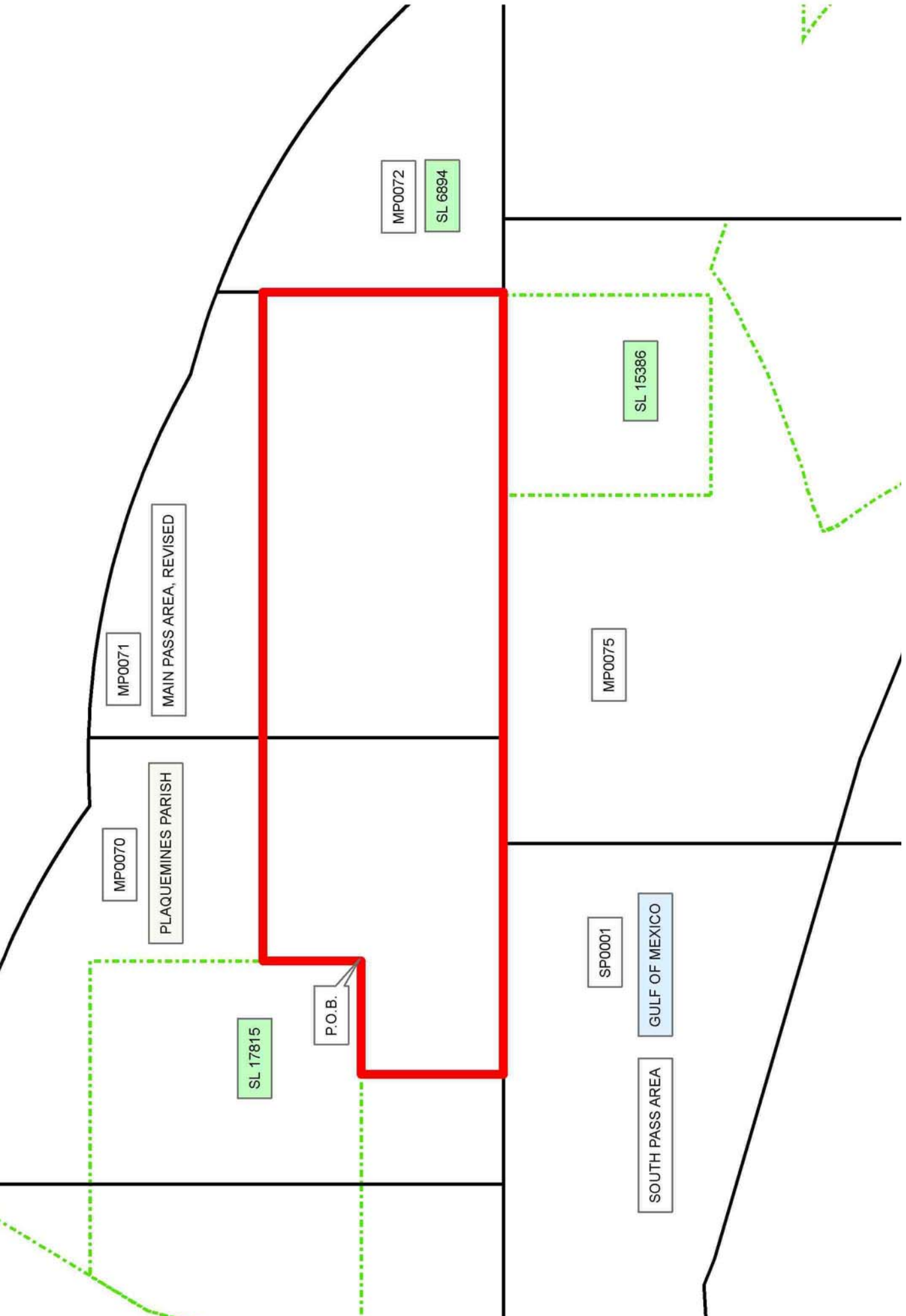
NOTE: The State of Louisiana does hereby reserve, and this lease shall be subject to, the imprescriptible right of surface use in the nature of a servitude in favor of the Department of Natural Resources, including its Offices and Commissions, for the sole purpose of implementing, constructing, servicing and maintaining approved coastal zone management and/or restoration projects. Utilization of any and all rights derived under this lease by the mineral lessee, its agents, successors or assigns, shall not interfere with nor hinder the reasonable surface use by the Department of Natural Resources, its Offices or Commissions, as herein above reserved.

Applicant: LESLIE M COOPER

Bidder	Cash Payment	Price/Acre	Rental	Oil	Gas	Other

**Legend**

- 07020071
- Blocks
- Active\_Leases



**TRACT 38864 - Portion of Block 75, Main Pass Area, Revised, and Block 1, South Pass Area, Plaquemines Parish, Louisiana**

The beds and bottoms of all water bodies belonging to the State of Louisiana located in Block 75, Main Pass Area, Revised, and Block 1, South Pass Area, together with any present lands formed by accretion to the shoreline or islands formed therein, located in Plaquemines Parish, Louisiana, owned by and not presently under mineral lease as of February 14, 2007, from the State of Louisiana, the geographical area of which is more fully described as follows: Beginning at a point on the North line of Block 75 Main Pass Area and the Northwest corner of State Lease No. 15386, as amended, having Coordinates of X = 2,756,979.00 and Y = 214,972.00; thence along the boundary of said State Lease No. 15386 the following: South 4,901.67 feet to a point having Coordinates of X = 2,756,979.00 and Y = 210,070.33 and East 4,729.00 feet to its Southeast corner having Coordinates of X = 2,761,708.00 and Y = 210,070.33; thence South 396.64 feet to a point on the North line of State Lease No. 8690, as amended having Coordinates of X = 2,761,708.00 and Y = 209,673.69; thence along the boundary of said State Lease No. 8690 the following: South 60 degrees 44 minutes 06 seconds West 566.75 feet, South 66 degrees 15 minutes 38 seconds West 267.35 feet, South 63 degrees 03 minutes 37 seconds West 1,210.89 feet, South 69 degrees 59 minutes 10 seconds West 2,426.80 feet, South 75 degrees 47 minutes 13 seconds West 514.48 feet, South 64 degrees 13 minutes 34 seconds West 179.73 feet, South 78 degrees 11 minutes 39 seconds West 225.47 feet and South 65 degrees 37 minutes 50 seconds West 160.53 feet to a point having Coordinates of X = 2,756,581.61 and Y = 207,593.00; thence West 9,461.03 feet through the West line of said Block 75 into Block 1 South Pass Area to a point on the Louisiana Coastline, as decreed by the Supreme Court of the United States, as determined by a Special Master appointed therein, in litigation styled *United States v. State of Louisiana et al No. 9 Original*, in 1975, having Coordinates of X = 2,747,120.59 and Y = 207,593.00; thence Northwesterly along said Louisiana Coastline on a straight line to a point having Coordinates of X = 2,743,163.00 and Y = 208,745.08; thence North 6,226.92 feet to a point on the North line of said Block 1 having Coordinates of X = 2,743,163.00 and Y = 214,972.00; thence East 13,816.00 feet along the North line of said Block 1 through its Northeast corner and along the North line of said Block 75 to the Point of Beginning, containing approximately **2,447.56 acres**, all as more particularly outlined on a plat on file in the Office of Mineral Resources, Department of Natural Resources. All bearings, distances and coordinates are based on Louisiana Coordinate System of 1927, (North or South Zone).

NOTE: The above description of the Tract nominated for lease has been provided and corrected, where required, exclusively by the nomination party. Any mineral lease selected from this Tract and awarded by the Louisiana State Mineral Board shall be without warranty of any kind, either express, implied, or statutory, including, but not limited to, the implied warranties of merchantability and fitness for a particular purpose. Should the mineral lease awarded by the Louisiana State Mineral

Board be subsequently modified, cancelled or abrogated due to the existence of conflicting leases, operating agreements, private claims or other future obligations or conditions which may affect all or any portion of the leased Tract, it shall not relieve the Lessee of the obligation to pay any bonus due thereon to the Louisiana State Mineral Board, nor shall the Louisiana State Mineral Board be obligated to refund any consideration paid by the Lessor prior to such modification, cancellation, or abrogation, including, but not limited to, bonuses, rentals and royalties.

NOTE: The Office of Mineral Resources will require a minimum bonus of \$200 per acre and a minimum royalty of 22%.

NOTE: The State of Louisiana does hereby reserve, and this lease shall be subject to, the imprescriptible right of surface use in the nature of a servitude in favor of the Department of Natural Resources, including its Offices and Commissions, for the sole purpose of implementing, constructing, servicing and maintaining approved coastal zone management and/or restoration projects. Utilization of any and all rights derived under this lease by the mineral lessee, its agents, successors or assigns, shall not interfere with nor hinder the reasonable surface use by the Department of Natural Resources, its Offices or Commissions, as herein above reserved.




NOTE: The Department of Wildlife and Fisheries has designated certain areas in the coastal waters of the State of Louisiana as Oyster Seed Bed Areas. The exact location of those Seed Bed Areas must be obtained from the Department of Wildlife and Fisheries and any work done under a mineral lease from the State of Louisiana may necessarily be conducted in conformity with the rules and regulations promulgated by the said Department of Wildlife and Fisheries for Oyster Seed Bed Areas.

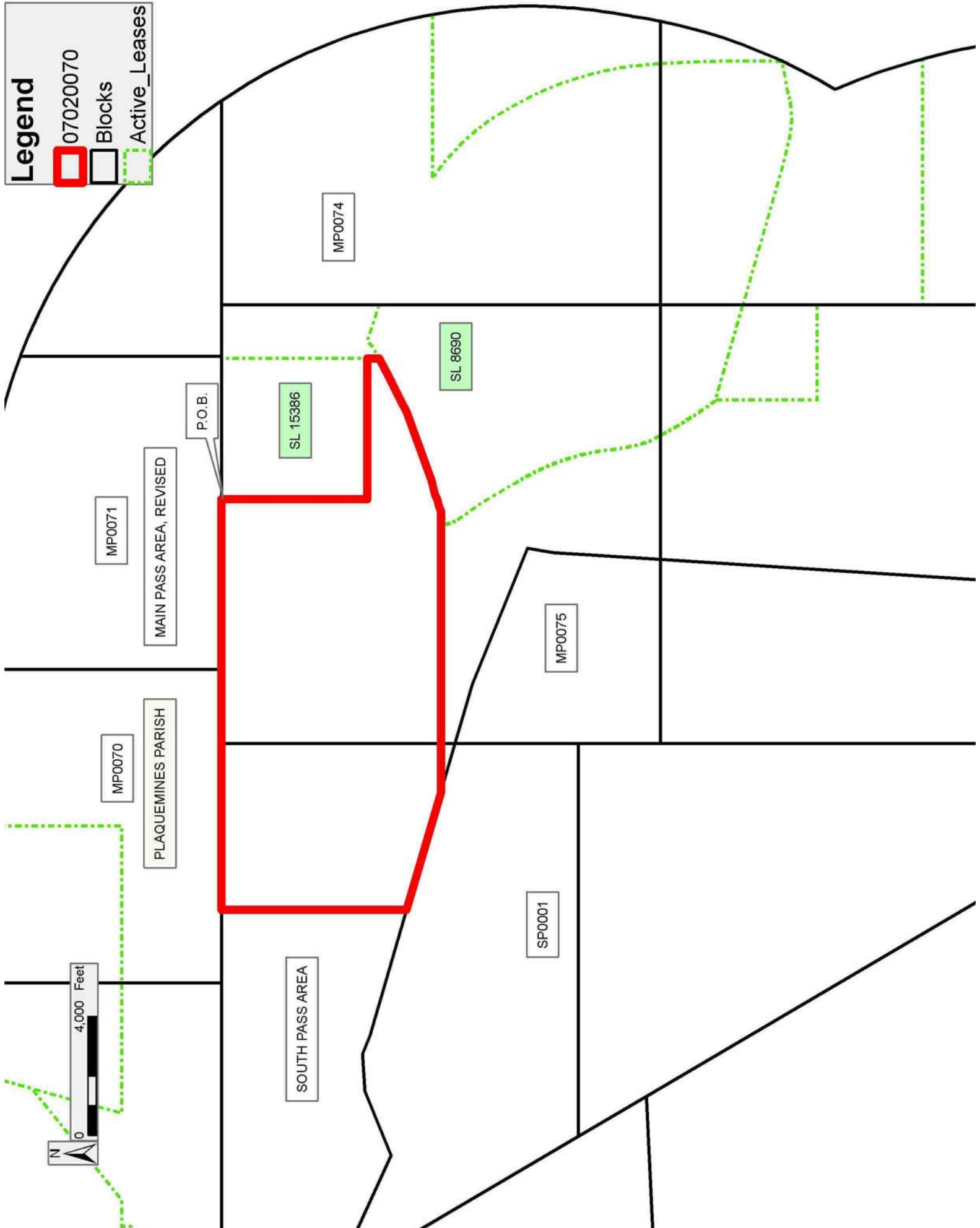
Applicant: LESLIE M COOPER

Bidder	Cash Payment	Price/Acre	Rental	Oil	Gas	Other



**Legend**

-  07020070
-  Blocks
-  Active\_Leases



**TRACT 38865 - Portion of Block 75, Main Pass Area, Revised, Plaquemines Parish, Louisiana**

The beds and bottoms of all water bodies belonging to the State of Louisiana located in Block 75, Main Pass Area, Revised, together with any present lands formed by accretion to the shoreline or islands formed therein, located in Plaquemines Parish, Louisiana, owned by and not presently under mineral lease as of February 14, 2007, from the State of Louisiana, the geographical area of which is more fully described as follows: Beginning at a point being the Northwest corner of Main Pass Block 74, having Coordinates of X = 2,763,508.00 and Y = 214,972.00; thence South along block line a distance of 5,302.29 feet to a point being the Northeast corner of State Lease No. 8690 having Coordinates of X = 2,763,508.00 and Y = 209,669.71; thence along the northern boundary of said State Lease No. 8690 the following: North 71 degrees 45 minutes 32 seconds West 1,279.88 feet to a point having Coordinates of X = 2,762,292.44 and Y = 210,070.33, South 46 degrees 53 minutes 26 seconds West 252.08 feet to a point having Coordinates of X = 2,762,108.41 and Y = 209,898.06, South 60 degrees 44 minutes 06 seconds West 458.99 to a point having Coordinates of X = 2,761,708.00 and Y = 209,673.69; thence leaving said State Lease No. 8690 North a distance of 396.64 feet to the southeast corner of State Lease No. 15386 and having Coordinates of X = 2,761,708.00 and Y = 210,070.33; thence along the east boundary of said State Lease No. 15386 North a distance of 4,901.67 feet to a point being the northeast corner of State Lease No. 15386 and having Coordinates of X = 2,761,708.00 and Y = 214,972.00; thence leaving said State Lease No. 15386 East a distance of 72.00 feet to a point being the southwest corner of Main Pass Block 72 and having Coordinates of X = 2,761,780.00 and Y = 214,972.00; thence East along the southern line of Main Pass Block 72 a distance of 1,728.00 feet to the point of beginning, containing approximately **211.12 acres**, all as more particularly outlined on a plat on file in the Office of Mineral Resources, Department of Natural Resources. All bearings, distances and coordinates are based on Louisiana Coordinate System of 1927, (North or South Zone).

NOTE: The above description of the Tract nominated for lease has been provided and corrected, where required, exclusively by the nomination party. Any mineral lease selected from this Tract and awarded by the Louisiana State Mineral Board shall be without warranty of any kind, either express, implied, or statutory, including, but not limited to, the implied warranties of merchantability and fitness for a particular purpose. Should the mineral lease awarded by the Louisiana State Mineral Board be subsequently modified, cancelled or abrogated due to the existence of conflicting leases, operating agreements, private claims or other future obligations or conditions which may affect all or any portion of the leased Tract, it shall not relieve the Lessee of the obligation to pay any bonus due thereon to the Louisiana State Mineral Board, nor shall the Louisiana State Mineral Board be obligated to refund any consideration paid by the Lessor prior to such modification, cancellation, or abrogation, including, but not limited to, bonuses, rentals and royalties.

NOTE: The Office of Mineral Resources will require a minimum bonus of \$200 per acre and a minimum royalty of 22%.

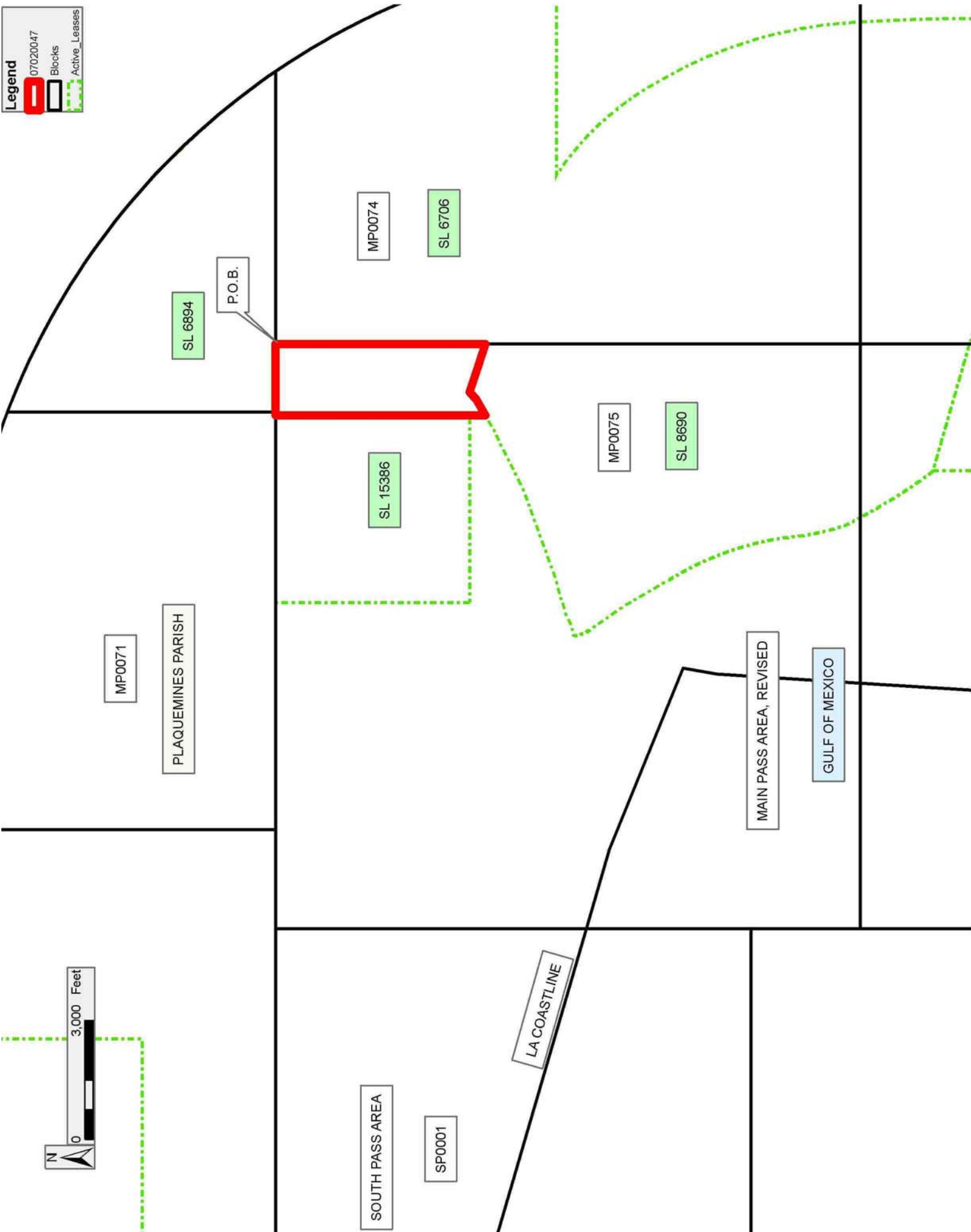
NOTE: The State of Louisiana does hereby reserve, and this lease shall be subject to, the imprescriptible right of surface use in the nature of a servitude in favor of the Department of Natural Resources, including its Offices and Commissions, for the sole purpose of implementing, constructing, servicing and maintaining approved coastal zone management and/or restoration projects. Utilization of any and all rights derived under this lease by the mineral lessee, its agents, successors or assigns, shall not interfere with nor hinder the reasonable surface use by the Department of Natural Resources, its Offices or Commissions, as herein above reserved.

Applicant: S & R RESOURCES, INC.

Bidder	Cash Payment	Price/Acre	Rental	Oil	Gas	Other

**Legend**

- 07020047
- Blocks
- Active\_Leases



**TRACT 38866 - Portion of Blocks 75, and 76, Main Pass Area, Revised, and Block 1, South Pass Area, Plaquemines Parish, Louisiana**

The beds and bottoms of all water bodies belonging to the State of Louisiana located in Blocks 75, and 76, Main Pass Area, Revised, and Block 1, South Pass Area, together with any present lands formed by accretion to the shoreline or islands formed therein, located in Plaquemines Parish, Louisiana, owned by and not presently under mineral lease as of February 14, 2007, from the State of Louisiana, the geographical area of which is more fully described as follows: Beginning at a point in Block 76 Main Pass Area and the Southwest corner of State Lease No. 15042, as amended, having Coordinates of X = 2,760,308.00 and Y = 194,946.02; thence East 3,200.00 feet along the South line of said State Lease No. 15042 to a point on the East line of said Block 76 having Coordinates of X = 2,763,508.00 and Y = 194,946.02; thence South 3,204.59 feet along the East line of said Block 76 to a point having Coordinates of X = 2,763,508.00 and Y = 191,741.43; thence West 9,100.14 feet to a point on the Louisiana Coastline, as decreed by the Supreme Court of the United States, as determined by a Special Master appointed therein, in litigation styled *United States v. State of Louisiana et al No. 9 Original*, in 1975, having Coordinates of X = 2,754,407.86 and Y = 191,741.43; thence along said Louisiana Coastline the following: Northeasterly on a straight line out of said Block 76 into Block 75, Main Pass Area to a point having Coordinates of X = 2,755,178.00 and Y = 203,815.00, Northeasterly on a straight line to a point having Coordinates of X = 2,755,325.00 and Y = 204,680.00, Northwesterly on a straight line to a point having Coordinates of X = 2,750,755.00 and Y = 206,535.00 and Northwesterly on a straight line out of said Block 75 into Block 1 South Pass Area to a point having Coordinates of X = 2,747,120.59 and Y = 207,593.00; thence East 9,461.03 feet out of said Block 1 into said Block 75 to a point on the West line of State Lease No. 8690, as amended having Coordinates of X = 2,756,581.61 and Y = 207,593.00; thence along the boundaries of said State Lease No. 8690 the following: South 65 degrees 37 minutes 50 seconds West 201.33 feet to a point having Coordinates of X = 2,756,398.22 and Y = 207,509.93, South 76 degrees 11 minutes 38 seconds West 277.23 feet to a point having Coordinates of X = 2,756,129.00 and Y = 207,443.77, along an arc having a Radius of 1,175 feet and center at X = 2,757,285.96 and Y = 207,648.85 to a point having Coordinates of X = 2,756,278.00 and Y = 207,045.00, South 34 degrees 51 minutes 16 seconds East 1,023.63 feet to a point having Coordinates of X = 2,756,863.00 and Y = 206,205.00, South 30 degrees 25 minutes 12 seconds East 1,337.06 feet to a point having Coordinates of X = 2,757,540.00 and Y = 205,052.01, along an arc having a Radius of 7,595 feet and a center of X = 2,751,097.27 and Y = 201,030.16 to a point having Coordinates of X = 2,758,610.00 and Y = 202,145.00, along an arc having a Radius of 6,420 feet and center of X = 2,765,011.96 and Y = 202,625.94 to a point having Coordinates of X = 2,758,920.00 and Y = 200,600.00 and along an arc having a Radius of 15,264 feet and a center at X = 2,772,565.62 and Y = 207,440.09 to its Southwest corner and a point on the South line of said Block 75 having Coordinates of X = 2,759,120.42 and Y = 200,214.00; thence East 0.02 feet along the South line of said State Lease

No. 8690 to the Northwest corner of State Lease No. 13287, as amended, having Coordinates of X = 2,759,120.44 and Y = 200,214.00; thence southerly along the West line of said State Lease No. 13287 and into Block 76 Main Pass Area on an arc having a Radius of 15,264 feet and center at X = 2,772,565.64 and Y = 207,440.08 to a point having Coordinates of X = 2,760,285.00 and Y = 198,375.00 and South 73 degrees 58 minutes 18 seconds East 23.93 feet to a point having Coordinates of X = 2,760,308.00 and Y = 198,368.40 being the Northwest corner of said State Lease No. 15042; thence South 3,422.38 feet along the West line of said State Lease No. 15042 to the Point of Beginning, containing approximately **2,009.08 acres**, all as more particularly outlined on a plat on file in the Office of Mineral Resources, Department of Natural Resources. All bearings, distances and coordinates are based on Louisiana Coordinate System of 1927, (North or South Zone).

NOTE: The above description of the Tract nominated for lease has been provided and corrected, where required, exclusively by the nomination party. Any mineral lease selected from this Tract and awarded by the Louisiana State Mineral Board shall be without warranty of any kind, either express, implied, or statutory, including, but not limited to, the implied warranties of merchantability and fitness for a particular purpose. Should the mineral lease awarded by the Louisiana State Mineral Board be subsequently modified, cancelled or abrogated due to the existence of conflicting leases, operating agreements, private claims or other future obligations or conditions which may affect all or any portion of the leased Tract, it shall not relieve the Lessee of the obligation to pay any bonus due thereon to the Louisiana State Mineral Board, nor shall the Louisiana State Mineral Board be obligated to refund any consideration paid by the Lessor prior to such modification, cancellation, or abrogation, including, but not limited to, bonuses, rentals and royalties.

NOTE: The Office of Mineral Resources will require a minimum bonus of \$200 per acre and a minimum royalty of 22%.

NOTE: The State of Louisiana does hereby reserve, and this lease shall be subject to, the imprescriptible right of surface use in the nature of a servitude in favor of the Department of Natural Resources, including its Offices and Commissions, for the sole purpose of implementing, constructing, servicing and maintaining approved coastal zone management and/or restoration projects. Utilization of any and all rights derived under this lease by the mineral lessee, its agents, successors or assigns, shall not interfere with nor hinder the reasonable surface use by the Department of Natural Resources, its Offices or Commissions, as herein above reserved.

Applicant: LESLIE M COOPER

Bidder	Cash Payment	Price/Acre	Rental	Oil	Gas	Other

**Legend**

07020069

Blocks

Active\_Leases

