

TRACT 38851 - Portion of Blocks 2, 28, 3, and 4, West Cameron Area, Revised, Cameron Parish, Louisiana

The beds and bottoms of all water bodies belonging to the State of Louisiana located in Blocks 2, 28, 3, and 4, West Cameron Area, Revised, together with any present lands formed by accretion to the shoreline or islands formed therein, located in Cameron Parish, Louisiana, owned by and not presently under mineral lease as of February 14, 2007, from the State of Louisiana, the geographical area of which is more fully described as follows: Beginning at a point on the West boundary of Block 3, West Cameron Area, having Coordinates of X = 1,391,451.71 and Y = 400,993.93; Thence East 14,841.33 feet to a point on the West boundary of State Lease No. 19031 having Coordinates of X = 1,406,293.04 and Y = 400,993.93; Thence South 8 degrees 21 minutes 8 seconds East 1,817.20 feet along the West boundary of said State Lease No. 19031 to its Southwest corner having Coordinates of X = 1,406,557.00 and Y = 399,196.00; Thence South 63 degrees 26 minutes 6 seconds East 2,283.03 feet along the Southwest boundary of said State Lease No. 19031 to its Southeast corner, also being the Southwest corner of State Lease No. 18524, having Coordinates of X = 1,408,599.00 and Y = 398,175.00; Thence East 1,201.00 feet along the South boundary of said State Lease No. 18524 to its Southeast corner having Coordinates of X = 1,409,800.00 and Y = 398,175.00; Thence South 4,384.76 feet to a point on the South boundary of Block 2 having Coordinates of X = 1,409,800.00 and Y = 393,790.24; Thence West 3,993.80 feet along the Southern boundary of Block 2 to its Southwest corner, also being the Southeast corner of Block 3, having Coordinates of X = 1,405,806.20 and Y = 393,790.24; Thence continue West 2,496.20 feet along the Southern boundary of Block 3 to the Southeast corner of State Lease No. 17842 having Coordinates of X = 1,403,310.00 and Y = 393,790.24; Thence North 1,974.76 feet along the East boundary of State Lease No. 17842 to its Northeast corner having Coordinates of X = 1,403,310.00 and Y = 395,765.00; Thence West 9,480.00 feet along the North boundary of State Lease No. 17842 to its Northwest corner having Coordinates of X = 1,393,830.00 and Y = 395,765.00; Thence South 1,974.76 feet along the West boundary of State Lease No. 17842 to its Southeast corner, also being a point on the South boundary of Block 3 and North boundary of Block 28, and also being the Northwest corner of State Lease No. 17845, having Coordinates of X = 1,393,830.00 and Y = 393,790.24; Thence continue South 1,590.24 feet along the West boundary of State Lease No. 17845 to a corner having Coordinates of X = 1,393,830.00 and Y = 392,200.00; Thence West 2,378.29 feet along the North boundary of State Lease No. 17845 to its Western most Northwest corner, also being a point on the West boundary of Block 28, having Coordinates of X = 1,391,451.71 and Y = 392,200.00; Thence North 1,590.24 feet along the West boundary of Block 28 to its Northwest corner, also being the Southwest corner of Block 3, having Coordinates of X = 1,391,451.71 and Y = 393,790.24; Thence continue North 7,203.69 feet along the West boundary of Block 3 to the point of beginning and containing approximately **2,500.00 acres**, all as more particularly outlined on a plat on file in the Office of Mineral Resources, Department

of Natural Resources. All bearings, distances and coordinates are based on Louisiana Coordinate System of 1927, (North or South Zone).

NOTE: The above description of the Tract nominated for lease has been provided and corrected, where required, exclusively by the nomination party. Any mineral lease selected from this Tract and awarded by the Louisiana State Mineral Board shall be without warranty of any kind, either express, implied, or statutory, including, but not limited to, the implied warranties of merchantability and fitness for a particular purpose. Should the mineral lease awarded by the Louisiana State Mineral Board be subsequently modified, cancelled or abrogated due to the existence of conflicting leases, operating agreements, private claims or other future obligations or conditions which may affect all or any portion of the leased Tract, it shall not relieve the Lessee of the obligation to pay any bonus due thereon to the Louisiana State Mineral Board, nor shall the Louisiana State Mineral Board be obligated to refund any consideration paid by the Lessor prior to such modification, cancellation, or abrogation, including, but not limited to, bonuses, rentals and royalties.

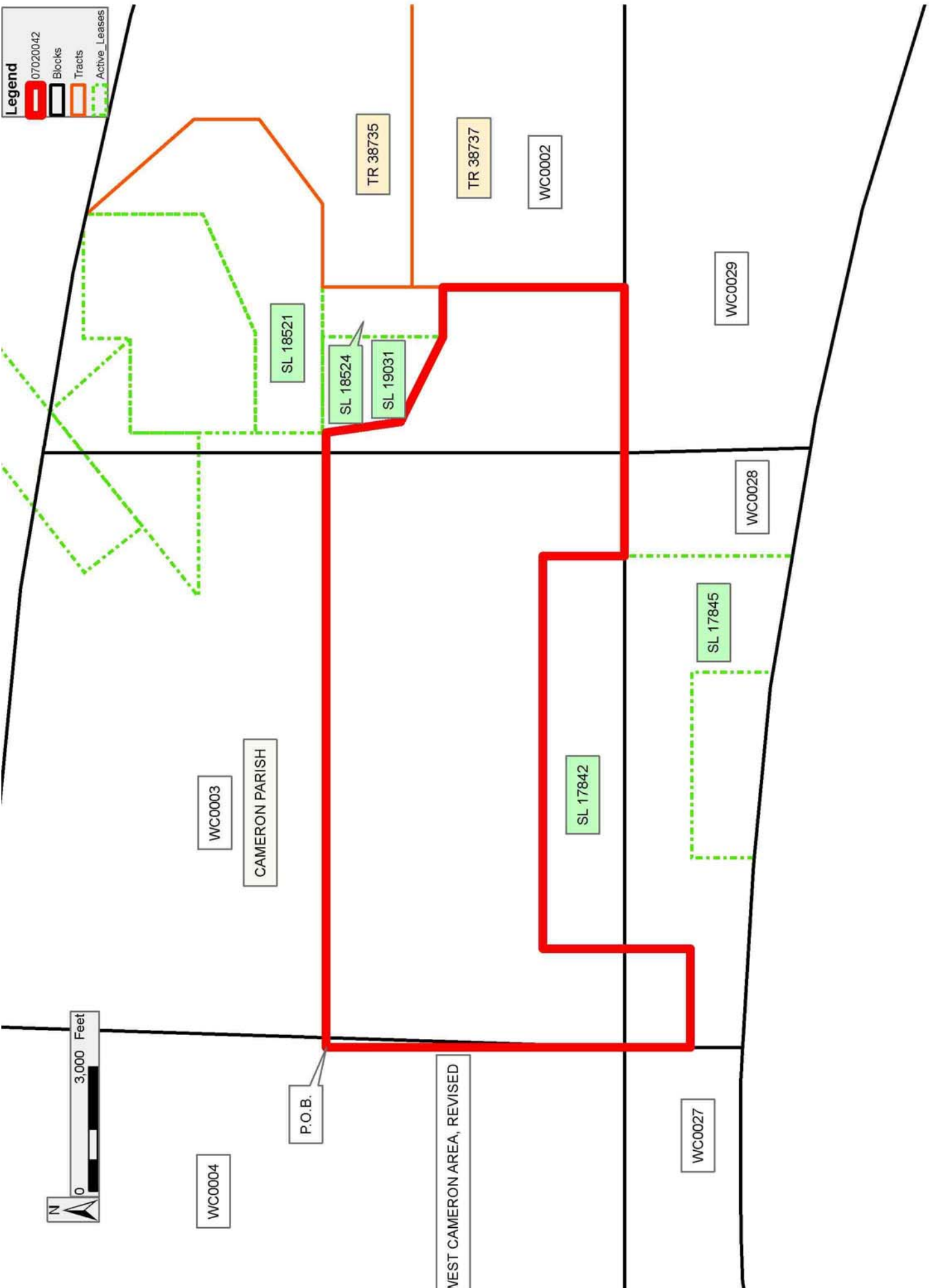
NOTE: The State of Louisiana does hereby reserve, and this lease shall be subject to, the imprescriptible right of surface use in the nature of a servitude in favor of the Department of Natural Resources, including its Offices and Commissions, for the sole purpose of implementing, constructing, servicing and maintaining approved coastal zone management and/or restoration projects. Utilization of any and all rights derived under this lease by the mineral lessee, its agents, successors or assigns, shall not interfere with nor hinder the reasonable surface use by the Department of Natural Resources, its Offices or Commissions, as herein above reserved.

Applicant: HOLLY PETROLEUM

Bidder	Cash Payment	Price/Acre	Rental	Oil	Gas	Other

Legend

- 07020042
- Blocks
- Tracts
- Active_Leases



TRACT 38852 - Portion of Blocks 12, and 9, Vermilion Area, Revised, Vermilion Parish, Louisiana

The beds and bottoms of all water bodies belonging to the State of Louisiana located in Blocks 12, and 9, Vermilion Area, Revised, together with any present lands formed by accretion to the shoreline or islands formed therein, located in Vermilion Parish, Louisiana, owned by and not presently under mineral lease as of February 14, 2007, from the State of Louisiana, the geographical area of which is more fully described as follows: Beginning at the Southeast corner of State Lease No. 18179 having Coordinates of X = 1,716,405.00 and Y = 319,580.00; thence North 4,288.35 feet along the East boundary of said State Lease No. 18179 to its Northeast corner, also being a point on the Louisiana Coastline, as decreed by the Supreme Court of the United States, as determined by a Special Master appointed therein, in litigation styled *United States v. State of Louisiana et al No. 9 Original*, in 1975, having Coordinates of X = 1,716,405.00 and Y = 323,868.35; thence along said Louisiana Coastline the following courses: Northeasterly along a straight line to a point having Coordinates of X = 1,717,114 and Y = 324,303; Northeasterly along a straight line to a point having Coordinates of X = 1,720,140 and Y = 326,402 and Northeasterly along a straight line to the Northeast corner of Block 9, Vermilion Area, Revised, having Coordinates of X = 1,721,172.41 and Y = 326,945.66; thence South 14,345.77 feet to a point on the East line of Block 12, Vermilion Area, Revised, also being the Northeast corner of State Lease No. 18600 having Coordinates of X = 1,721,172.41 and Y = 312,599.89; thence South 79 degrees 05 minutes 08 seconds West 7,514.96 feet along the Northern boundary of said State Lease No. 18600 to a point having Coordinates of X = 1,713,793.39 and Y = 311,176.99; thence North 8,403.01 feet to a point on the South boundary of said State Lease No. 18179 having Coordinates of X = 1,713,793.39 and Y = 319,580.00; thence East 2,611.61 feet along the South boundary of said State Lease No. 18179 to the point of beginning, containing approximately **1,945.41 acres**, all as more particularly outlined on a plat on file in the Office of Mineral Resources, Department of Natural Resources. All bearings, distances and coordinates are based on Louisiana Coordinate System of 1927, (North or South Zone).

NOTE: The above description of the Tract nominated for lease has been provided and corrected, where required, exclusively by the nomination party. Any mineral lease selected from this Tract and awarded by the Louisiana State Mineral Board shall be without warranty of any kind, either express, implied, or statutory, including, but not limited to, the implied warranties of merchantability and fitness for a particular purpose. Should the mineral lease awarded by the Louisiana State Mineral Board be subsequently modified, cancelled or abrogated due to the existence of conflicting leases, operating agreements, private claims or other future obligations or conditions which may affect all or any portion of the leased Tract, it shall not relieve the Lessee of the obligation to pay any bonus due thereon to the Louisiana State Mineral Board, nor shall the Louisiana State Mineral Board be obligated to refund any consideration

paid by the Lessor prior to such modification, cancellation, or abrogation, including, but not limited to, bonuses, rentals and royalties.

NOTE: The State of Louisiana does hereby reserve, and this lease shall be subject to, the imprescriptible right of surface use in the nature of a servitude in favor of the Department of Natural Resources, including its Offices and Commissions, for the sole purpose of implementing, constructing, servicing and maintaining approved coastal zone management and/or restoration projects. Utilization of any and all rights derived under this lease by the mineral lessee, its agents, successors or assigns, shall not interfere with nor hinder the reasonable surface use by the Department of Natural Resources, its Offices or Commissions, as herein above reserved.

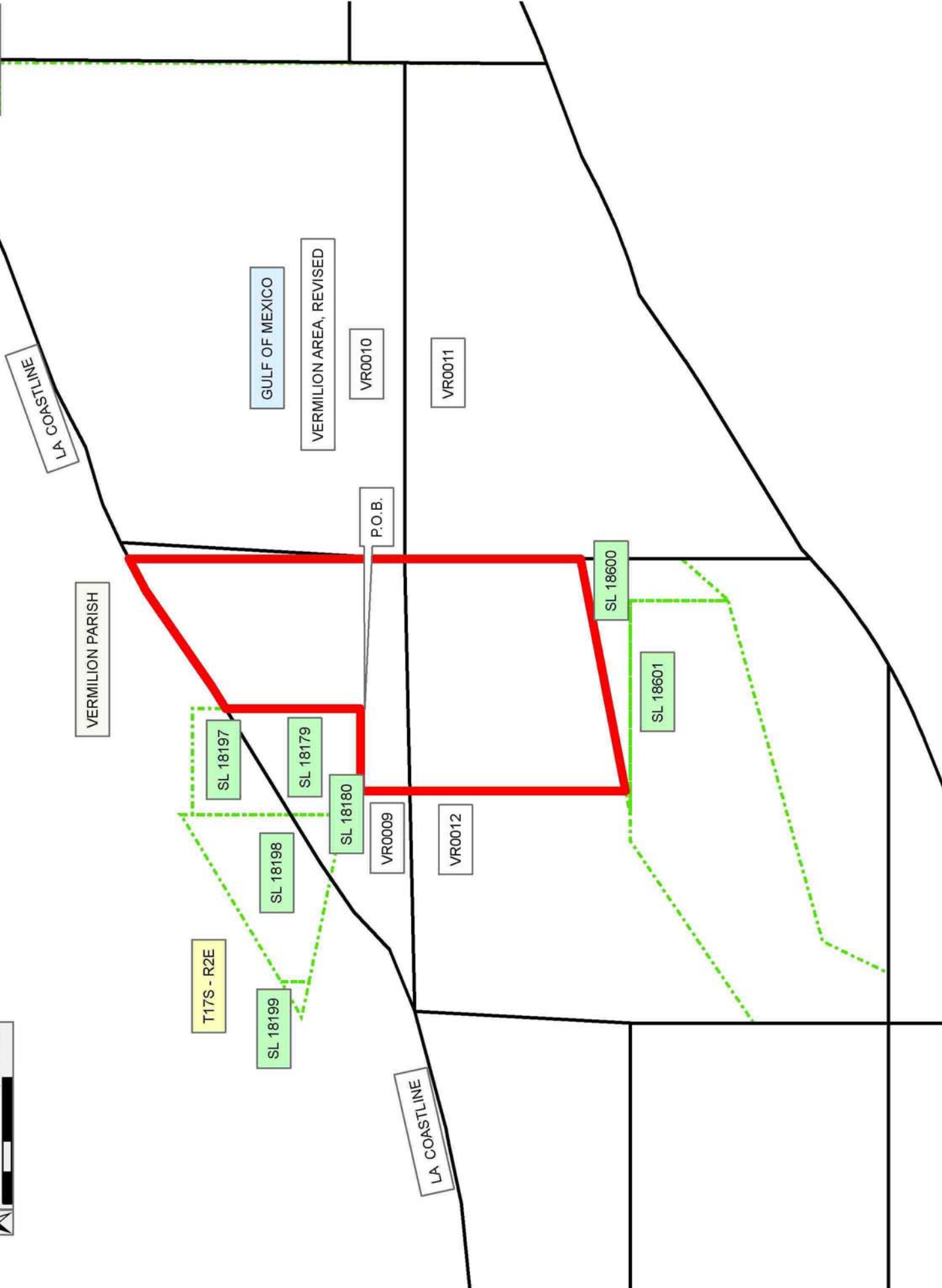
NOTE: The Department of Wildlife and Fisheries has designated certain areas in the coastal waters of the State of Louisiana as Oyster Seed Bed Areas. The exact location of those Seed Bed Areas must be obtained from the Department of Wildlife and Fisheries and any work done under a mineral lease from the State of Louisiana may necessarily be conducted in conformity with the rules and regulations promulgated by the said Department of Wildlife and Fisheries for Oyster Seed Bed Areas.

Applicant: CYPRESS ENERGY CORPORATION

Bidder	Cash Payment	Price/Acre	Rental	Oil	Gas	Other

Legend

- 07020081
- Blocks
- Active_Leases



TRACT 38853 - Portion of Blocks 12, and 9, Vermilion Area, Revised, Vermilion Parish, Louisiana

The beds and bottoms of all water bodies belonging to the State of Louisiana located in Blocks 12, and 9, Vermilion Area, Revised, together with any present lands formed by accretion to the shoreline or islands formed therein, located in Vermilion Parish, Louisiana, owned by and not presently under mineral lease as of February 14, 2007, from the State of Louisiana, the geographical area of which is more fully described as follows: Beginning at the Northwest corner of Block 12, Vermilion Area, Revised, also being Southwest corner of Block 9, Vermilion Area, Revised, having Coordinates of X = 1,706,414.36 and Y = 317,582.82; thence North 187.45 feet along the West line of said Block 9 to its Northwest corner also being a point on the Louisiana Coastline, as decreed by the Supreme Court of the United States, as determined by a Special Master appointed therein, in litigation styled *United States v. State of Louisiana et al No. 9 Original*, in 1975, having Coordinates of X = 1,706,414.36 and Y = 317,770.27; thence along said Louisiana Coastline the following courses: Northeasterly along a straight line to a point having Coordinates of X = 1,706,790 and Y = 317,870; Northeasterly along a straight line to a point having Coordinates of X = 1,708,756 and Y = 318,661; Northeasterly along a straight line to a point having Coordinates of X = 1,709,968 and Y = 319,818 and Northeasterly along a straight line to the Southwest corner of State Lease No. 18180 Coordinates of X = 1,711,037.92 and Y = 320,545.19; thence South 78 degrees 13 minutes 41 seconds East 2,039.99 feet along the South boundary of said State Lease No. 18180 to its Southeast corner, also being a point on the West boundary of State Lease No. 18179 having Coordinates of X = 1,713,035.00 and Y = 320,129.00; thence along the boundary of said State Lease No. 18179 the following courses: South 549.00 feet to point having Coordinates of X = 1,713,035.00 and Y = 319,580.00 and East 758.39 feet to a point having Coordinates of X = 1,713,793.39 and Y = 319,580.00; thence South 8,403.01 feet to a point on the Northern boundary of State Lease No. 18600 having Coordinates of X = 1,713,793.39 and Y = 311,176.99; thence South 79 degrees 05 minutes 08 seconds West 805.49 feet along the Northern boundary of said State Lease No. 18600 to its Northwest corner, also being a point on the North boundary of State Lease No. 18601 having Coordinates of X = 1,713,002.47 and Y = 311,024.48; thence along the boundary of said State Lease No. 18601 the following courses: North 89 degrees 59 minutes 52 seconds West 801.72 feet to a point having Coordinates of X = 1,712,200.75 and Y = 311,024.51 and South 55 degrees 51 minutes 19 seconds West 6,991.58 feet to its Southernmost Northwest corner, also being a point on the West line of said Block 12 having Coordinates of X = 1,706,414.36 and Y = 307,100.24; thence North 10,482.58 feet along the West line of said Block 12 to the point of beginning, containing approximately **1,674.06 acres**, all as more particularly outlined on a plat on file in the Office of Mineral Resources, Department of Natural Resources. All bearings, distances and coordinates are based on Louisiana Coordinate System of 1927, (North or South Zone).

NOTE: The above description of the Tract nominated for lease has been provided and corrected, where required, exclusively by the nomination party. Any mineral lease selected from this Tract and awarded by the Louisiana State Mineral Board shall be without warranty of any kind, either express, implied, or statutory, including, but not limited to, the implied warranties of merchantability and fitness for a particular purpose. Should the mineral lease awarded by the Louisiana State Mineral Board be subsequently modified, cancelled or abrogated due to the existence of conflicting leases, operating agreements, private claims or other future obligations or conditions which may affect all or any portion of the leased Tract, it shall not relieve the Lessee of the obligation to pay any bonus due thereon to the Louisiana State Mineral Board, nor shall the Louisiana State Mineral Board be obligated to refund any consideration paid by the Lessor prior to such modification, cancellation, or abrogation, including, but not limited to, bonuses, rentals and royalties.




NOTE: The State of Louisiana does hereby reserve, and this lease shall be subject to, the imprescriptible right of surface use in the nature of a servitude in favor of the Department of Natural Resources, including its Offices and Commissions, for the sole purpose of implementing, constructing, servicing and maintaining approved coastal zone management and/or restoration projects. Utilization of any and all rights derived under this lease by the mineral lessee, its agents, successors or assigns, shall not interfere with nor hinder the reasonable surface use by the Department of Natural Resources, its Offices or Commissions, as herein above reserved.

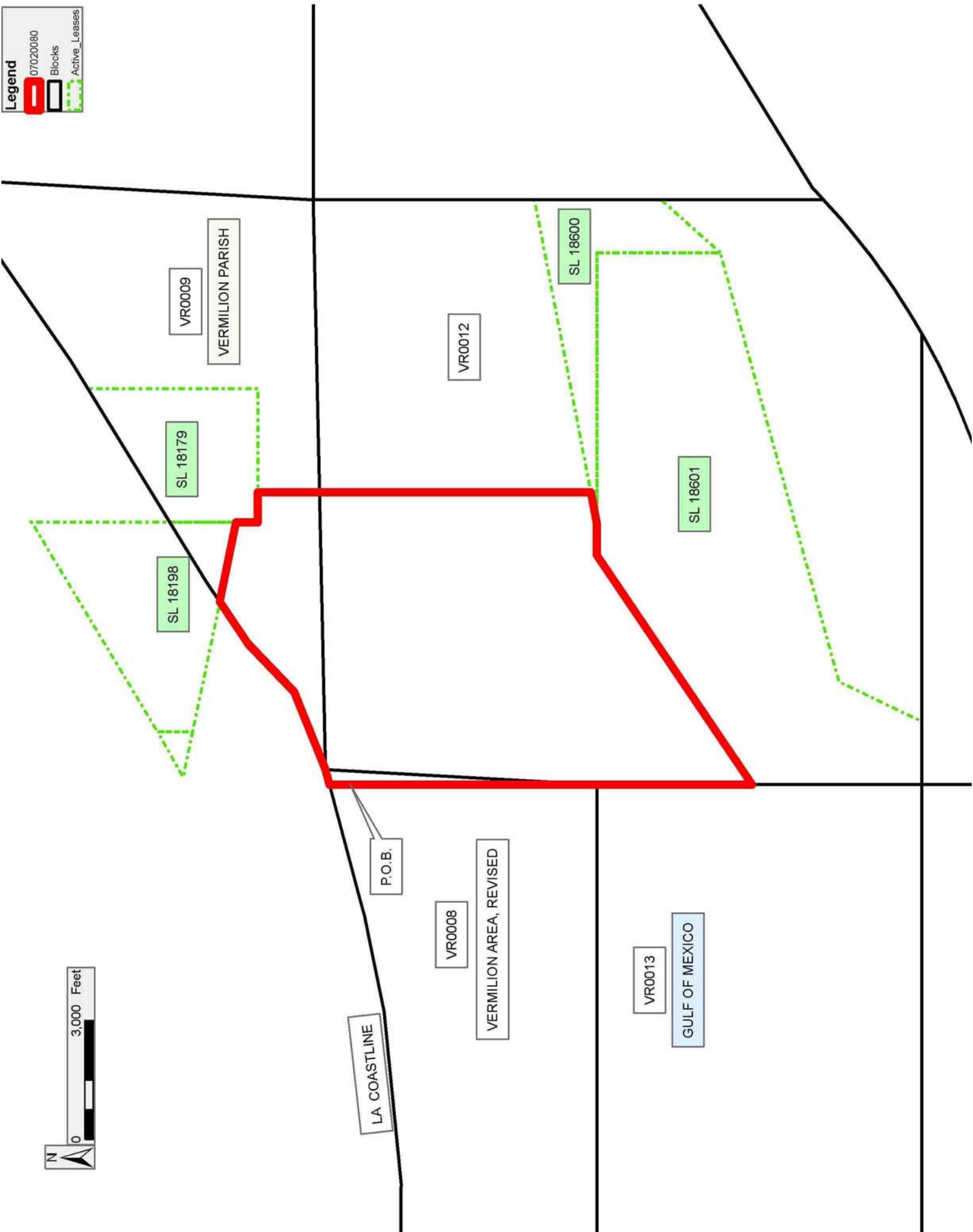
NOTE: The Department of Wildlife and Fisheries has designated certain areas in the coastal waters of the State of Louisiana as Oyster Seed Bed Areas. The exact location of those Seed Bed Areas must be obtained from the Department of Wildlife and Fisheries and any work done under a mineral lease from the State of Louisiana may necessarily be conducted in conformity with the rules and regulations promulgated by the said Department of Wildlife and Fisheries for Oyster Seed Bed Areas.

Applicant: CYPRESS ENERGY CORPORATION

Bidder	Cash Payment	Price/Acre	Rental	Oil	Gas	Other

Legend

-  07020080
-  Blocks
-  Active_Leases



TRACT 38854 - Portion of Blocks 14, and 7, Vermilion Area, Revised, Vermilion Parish, Louisiana

The beds and bottoms of all water bodies belonging to the State of Louisiana located in Blocks 14, and 7, Vermilion Area, Revised, together with any present lands formed by accretion to the shoreline or islands formed therein, located in Vermilion Parish, Louisiana, owned by and not presently under mineral lease as of February 14, 2007, from the State of Louisiana, the geographical area of which is more fully described as follows: Beginning at the Northwest corner of Block 7, Vermilion Area, Revised, also being a point on the Louisiana Coastline, as decreed by the Supreme Court of the United States, as determined by a Special Master appointed therein, in litigation styled *United States v. State of Louisiana et al No. 9 Original*, in 1975, having Coordinates of X = 1,676,898.27 and Y = 318,813.64; thence along said Louisiana Coastline the following courses: Southeasterly along a straight line to a point having Coordinates of X = 1,678,545 and Y = 318,408; Southeasterly along a straight line to a point having Coordinates of X = 1,687,270 and Y = 316,510; Southeasterly along a straight line to a point having Coordinates of X = 1,689,980 and Y = 316,170 and Southeasterly along a straight line to the Northeast corner of said Block 7 having Coordinates of X = 1,691,656.32 and Y = 316,053.41; thence South 10,478.89 feet to a point on the East line of Block 14, Vermilion Area, Revised, also being the Southernmost Northeast corner of State Lease No. 861, as amended, having Coordinates of X = 1,691,656.32 and Y = 305,574.52; thence along the boundary of said State Lease No. 861 the following courses: North 45 degrees 09 minutes 36 seconds West 7,729.42 feet and West 9,277.28 feet to its Northwest corner, also being the Northwest corner of said Block 14 and the Southwest corner of said Block 7 having Coordinates of X = 1,676,898.27 and Y = 311,024.77; thence North 7,788.87 feet along the West line of said Block 7 to the point of beginning, containing approximately **2,165 acres**, all as more particularly outlined on a plat on file in the Office of Mineral Resources, Department of Natural Resources. All bearings, distances and coordinates are based on Louisiana Coordinate System of 1927, (North or South Zone).

NOTE: The above description of the Tract nominated for lease has been provided and corrected, where required, exclusively by the nomination party. Any mineral lease selected from this Tract and awarded by the Louisiana State Mineral Board shall be without warranty of any kind, either express, implied, or statutory, including, but not limited to, the implied warranties of merchantability and fitness for a particular purpose. Should the mineral lease awarded by the Louisiana State Mineral Board be subsequently modified, cancelled or abrogated due to the existence of conflicting leases, operating agreements, private claims or other future obligations or conditions which may affect all or any portion of the leased Tract, it shall not relieve the Lessee of the obligation to pay any bonus due thereon to the Louisiana State Mineral Board, nor shall the Louisiana State Mineral Board be obligated to refund any consideration

paid by the Lessor prior to such modification, cancellation, or abrogation, including, but not limited to, bonuses, rentals and royalties.

NOTE: The State of Louisiana does hereby reserve, and this lease shall be subject to, the imprescriptible right of surface use in the nature of a servitude in favor of the Department of Natural Resources, including its Offices and Commissions, for the sole purpose of implementing, constructing, servicing and maintaining approved coastal zone management and/or restoration projects. Utilization of any and all rights derived under this lease by the mineral lessee, its agents, successors or assigns, shall not interfere with nor hinder the reasonable surface use by the Department of Natural Resources, its Offices or Commissions, as herein above reserved.

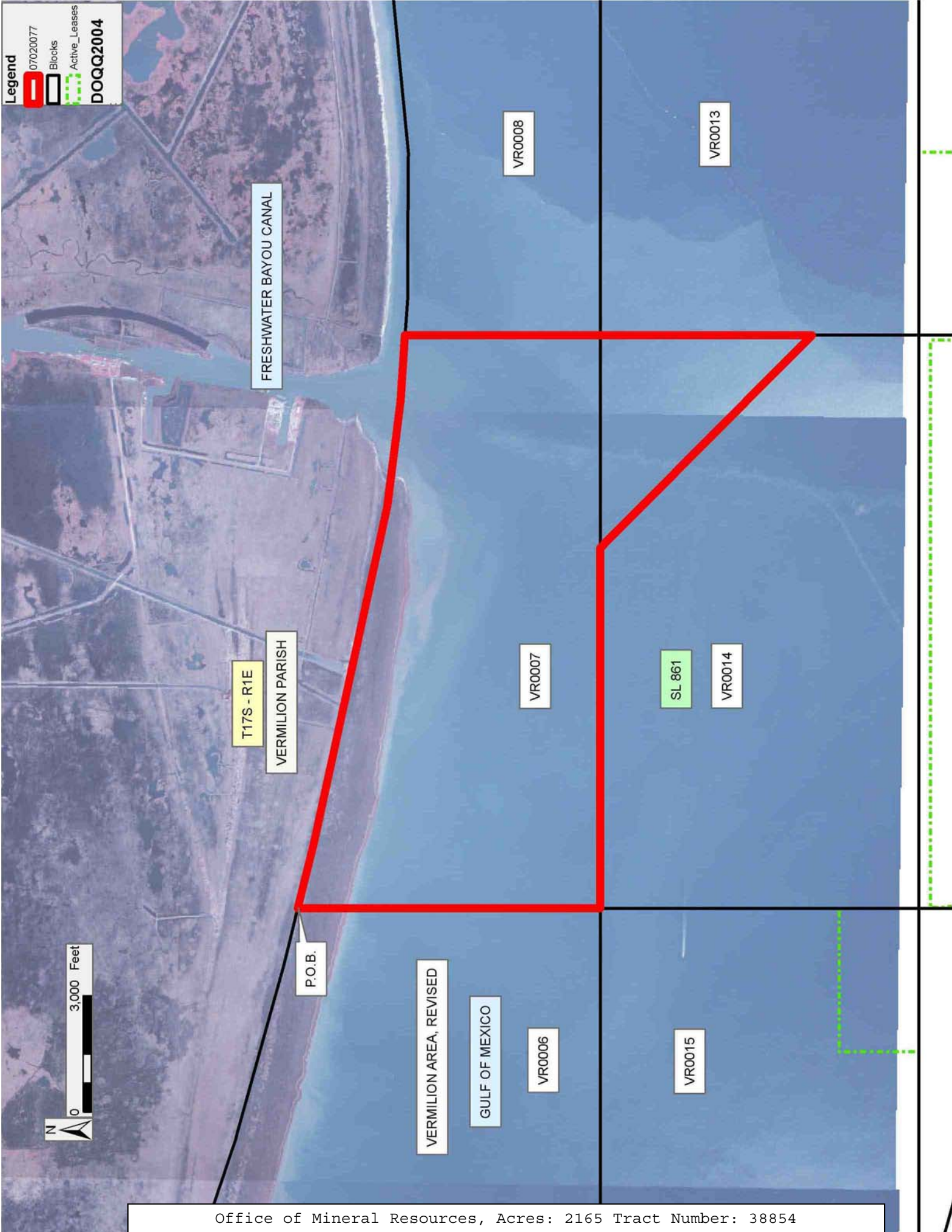
NOTE: The Department of Wildlife and Fisheries has designated certain areas in the coastal waters of the State of Louisiana as Oyster Seed Bed Areas. The exact location of those Seed Bed Areas must be obtained from the Department of Wildlife and Fisheries and any work done under a mineral lease from the State of Louisiana may necessarily be conducted in conformity with the rules and regulations promulgated by the said Department of Wildlife and Fisheries for Oyster Seed Bed Areas.

Applicant: CYPRESS ENERGY CORPORATION

Bidder	Cash Payment	Price/Acre	Rental	Oil	Gas	Other

Legend

- 07020077
- Blocks
- Active_Leases
- DOQQ2004



TRACT 38855 - Portion of Blocks 13, and 8, Vermilion Area, Revised, Vermilion Parish, Louisiana

The beds and bottoms of all water bodies belonging to the State of Louisiana located in Blocks 13, and 8, Vermilion Area, Revised, together with any present lands formed by accretion to the shoreline or islands formed therein, located in Vermilion Parish, Louisiana, owned by and not presently under mineral lease as of February 14, 2007, from the State of Louisiana, the geographical area of which is more fully described as follows: Beginning at a point on the North line of Block 13, Vermilion Area, Revised, also being the South line of Block 8, Vermilion Area, Revised, having Coordinates of X = 1,699,035.34 and Y = 311,024.77; thence North 5,203.47 feet to a point on the North line of said Block 8, also being a point on the Louisiana Coastline, as decreed by the Supreme Court of the United States, as determined by a Special Master appointed therein, in litigation styled *United States v. State of Louisiana et al No. 9 Original*, in 1975, having Coordinates of X = 1,699,035.34 and Y = 316,228.24; thence along said Louisiana Coastline the following courses: Northeasterly along a straight line to a point having Coordinates of X = 1,700,680 and Y = 316,390; Northeasterly along a straight line to a point having Coordinates of X = 1,703,080 and Y = 316,885 and Northeasterly along a straight line to the Northeast corner of said Block 8 having Coordinates of X = 1,706,414.36 and Y = 317,770.27; thence South 10,670.03 feet to a point on the East line of said Block 13, also being the Southernmost Northwest corner of State Lease No. 18601 having Coordinates of X = 1,706,414.36 and Y = 307,100.24; thence South 4,275.47 feet along the West boundary of said State Lease No. 18601 to its Southwest corner, also being the Southeast corner of said Block 13 having Coordinates of X = 1,706,414.36 and Y = 302,824.77; thence West 7,379.02 feet along the South line of said Block 13 to a point having Coordinates of X = 1,699,035.34 and Y = 302,824.77; thence North 8,200.00 feet to the point of beginning, containing approximately **2,380.29 acres**, all as more particularly outlined on a plat on file in the Office of Mineral Resources, Department of Natural Resources. All bearings, distances and coordinates are based on Louisiana Coordinate System of 1927, (North or South Zone).

NOTE: The above description of the Tract nominated for lease has been provided and corrected, where required, exclusively by the nomination party. Any mineral lease selected from this Tract and awarded by the Louisiana State Mineral Board shall be without warranty of any kind, either express, implied, or statutory, including, but not limited to, the implied warranties of merchantability and fitness for a particular purpose. Should the mineral lease awarded by the Louisiana State Mineral Board be subsequently modified, cancelled or abrogated due to the existence of conflicting leases, operating agreements, private claims or other future obligations or conditions which may affect all or any portion of the leased Tract, it shall not relieve the Lessee of the obligation to pay any bonus due thereon to the Louisiana State Mineral Board, nor shall the Louisiana State Mineral Board be obligated to refund any consideration

paid by the Lessor prior to such modification, cancellation, or abrogation, including, but not limited to, bonuses, rentals and royalties.




NOTE: The State of Louisiana does hereby reserve, and this lease shall be subject to, the imprescriptible right of surface use in the nature of a servitude in favor of the Department of Natural Resources, including its Offices and Commissions, for the sole purpose of implementing, constructing, servicing and maintaining approved coastal zone management and/or restoration projects. Utilization of any and all rights derived under this lease by the mineral lessee, its agents, successors or assigns, shall not interfere with nor hinder the reasonable surface use by the Department of Natural Resources, its Offices or Commissions, as herein above reserved.

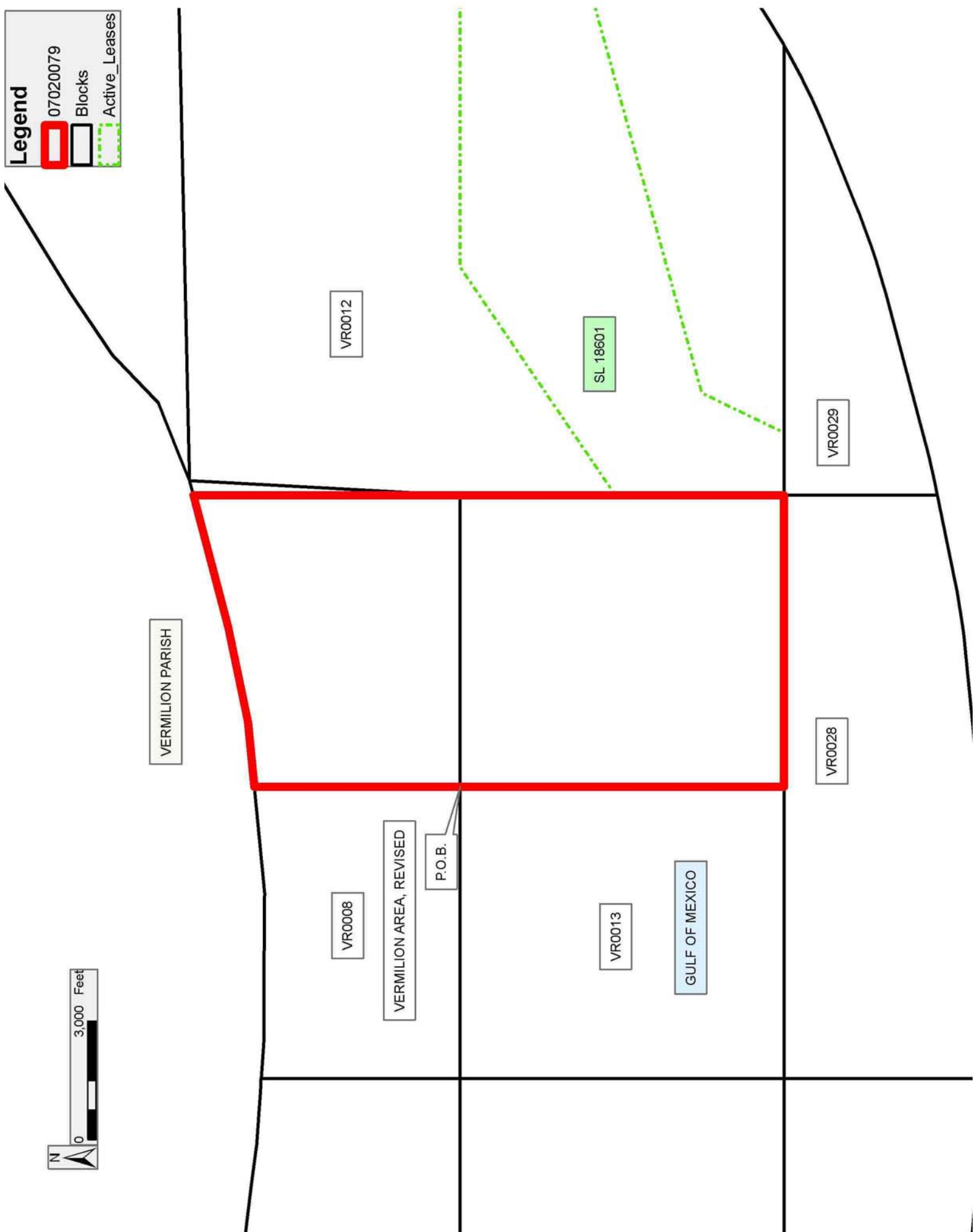
NOTE: The Department of Wildlife and Fisheries has designated certain areas in the coastal waters of the State of Louisiana as Oyster Seed Bed Areas. The exact location of those Seed Bed Areas must be obtained from the Department of Wildlife and Fisheries and any work done under a mineral lease from the State of Louisiana may necessarily be conducted in conformity with the rules and regulations promulgated by the said Department of Wildlife and Fisheries for Oyster Seed Bed Areas.

Applicant: CYPRESS ENERGY CORPORATION

Bidder	Cash Payment	Price/Acre	Rental	Oil	Gas	Other

Legend

-  07020079
-  Blocks
-  Active_Leases



TRACT 38856 - Portion of Blocks 13, and 8, Vermilion Area, Revised, Vermilion Parish, Louisiana

The beds and bottoms of all water bodies belonging to the State of Louisiana located in Blocks 13, and 8, Vermilion Area, Revised, together with any present lands formed by accretion to the shoreline or islands formed therein, located in Vermilion Parish, Louisiana, owned by and not presently under mineral lease as of February 14, 2007, from the State of Louisiana, the geographical area of which is more fully described as follows: Beginning at the Northwest corner of Block 13, Vermilion Area, Revised, also being the Southwest corner of Block 8, Vermilion Area, Revised, having Coordinates of X = 1,691,656.32 and Y = 311,024.77; thence North 5,028.64 feet along the West line of said Block 8 to its Northwest corner, also being a point on the Louisiana Coastline, as decreed by the Supreme Court of the United States, as determined by a Special Master appointed therein, in litigation styled *United States v. State of Louisiana et al No. 9 Original*, in 1975, having Coordinates of X = 1,691,656.32 and Y = 316,053.41; thence along said Louisiana Coastline the following courses: Southeasterly along a straight line to a point having Coordinates of X = 1,692,568 and Y = 315,990; Southeasterly along a straight line to a point having Coordinates of X = 1,696,359 and Y = 315,965 and Northeasterly along a straight line to a point having Coordinates of X = 1,699,035.34 and Y = 316,228.24; thence South 13,403.47 feet to a point on the South line of said Block 13 having Coordinates of X = 1,699,035.34 and Y = 302,824.77; thence West 7,379.02 feet along the South line of said Block 13 to its Southwest corner, also being the Southeast corner of State Lease No. 861, as amended, having Coordinates of X = 1,691,656.32 and Y = 302,824.77; thence North 2,749.75 feet along the East boundary of said State Lease No. 861 to its Southernmost Northeast having Coordinates of X = 1,691,656.32 and Y = 305,574.52; thence continue North 5,450.25 feet along the West line of said Block 13 to the point of beginning, containing approximately **2,236.30 acres**, all as more particularly outlined on a plat on file in the Office of Mineral Resources, Department of Natural Resources. All bearings, distances and coordinates are based on Louisiana Coordinate System of 1927, (North or South Zone).

NOTE: The above description of the Tract nominated for lease has been provided and corrected, where required, exclusively by the nomination party. Any mineral lease selected from this Tract and awarded by the Louisiana State Mineral Board shall be without warranty of any kind, either express, implied, or statutory, including, but not limited to, the implied warranties of merchantability and fitness for a particular purpose. Should the mineral lease awarded by the Louisiana State Mineral Board be subsequently modified, cancelled or abrogated due to the existence of conflicting leases, operating agreements, private claims or other future obligations or conditions which may affect all or any portion of the leased Tract, it shall not relieve the Lessee of the obligation to pay any bonus due thereon to the Louisiana State Mineral Board, nor shall the Louisiana State Mineral Board be obligated to refund any consideration

paid by the Lessor prior to such modification, cancellation, or abrogation, including, but not limited to, bonuses, rentals and royalties.




NOTE: The State of Louisiana does hereby reserve, and this lease shall be subject to, the imprescriptible right of surface use in the nature of a servitude in favor of the Department of Natural Resources, including its Offices and Commissions, for the sole purpose of implementing, constructing, servicing and maintaining approved coastal zone management and/or restoration projects. Utilization of any and all rights derived under this lease by the mineral lessee, its agents, successors or assigns, shall not interfere with nor hinder the reasonable surface use by the Department of Natural Resources, its Offices or Commissions, as herein above reserved.

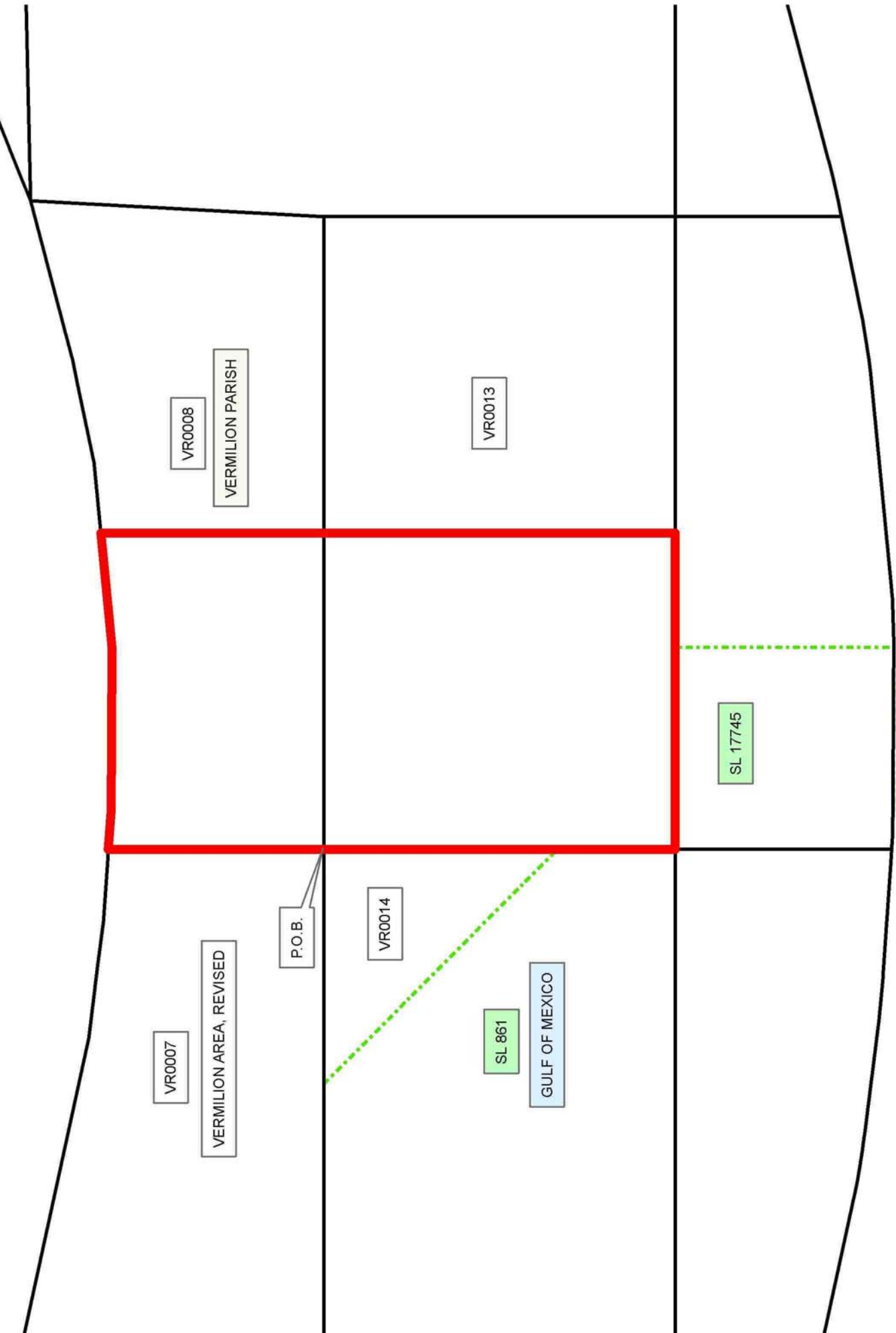
NOTE: The Department of Wildlife and Fisheries has designated certain areas in the coastal waters of the State of Louisiana as Oyster Seed Bed Areas. The exact location of those Seed Bed Areas must be obtained from the Department of Wildlife and Fisheries and any work done under a mineral lease from the State of Louisiana may necessarily be conducted in conformity with the rules and regulations promulgated by the said Department of Wildlife and Fisheries for Oyster Seed Bed Areas.

Applicant: CYPRESS ENERGY CORPORATION

Bidder	Cash Payment	Price/Acre	Rental	Oil	Gas	Other

Legend

-  07020078
-  Blocks
-  Active_Leases



TRACT 38857 - Portion of Blocks 6, and 7, Eugene Island Area, Revised, Iberia Parish, Louisiana

The beds and bottoms of all water bodies belonging to the State of Louisiana located in Blocks 6, and 7, Eugene Island Area, Revised, together with any present lands formed by accretion to the shoreline or islands formed therein, located in Iberia Parish, Louisiana, owned by and not presently under mineral lease as of February 14, 2007, from the State of Louisiana, the geographical area of which is more fully described as follows: Beginning at a point in Block 7, Eugene Island Area, Revised, also being a point on the Louisiana Coastline, as decreed by the Supreme Court of the United States, as determined by a Special Master appointed therein, in litigation styled *United States v. State of Louisiana et al No. 9 Original*, in 1975, having Coordinates of X = 1,858,534.00 and Y = 276,717.60; thence Northeasterly, along a straight line, along said Louisiana Coastline to a point in Block 6, Eugene Island Area, Revised, having Coordinates of X = 1,872,418 and Y = 277,460; thence South 3,567.42 feet to a point on the North boundary of State Lease No. 18860 having Coordinates of X = 1,872,418.00 and Y = 273,892.58; thence West 1,664.98 feet along the North boundary of said State Lease No. 18860 to its Northwest corner, also being the Northeast corner of State Lease No. 19155 having Coordinates of X = 1,870,753.02 and Y = 273,892.58; thence continue West 1,564.46 feet along the North boundary of said State Lease No. 19155 to its Northwest corner having Coordinates of X = 1,869,188.56 and Y = 273,892.58; thence continue West 2,250.13 feet to a point on the East boundary of State Lease No. 19154 having Coordinates of X = 1,866,938.43 and Y = 273,892.58; thence along the boundary of said State Lease No. 19154 the following courses: North 37 degrees 42 minutes 03 seconds East 3,510.68 feet to a point having Coordinates of X = 1,869,085.35 and Y = 276,670.28; South 82 degrees 05 minutes 48 seconds West 7,624.54 feet to a point having Coordinates of X = 1,861,533.24 and Y = 275,621.87; South 61 degrees 13 minutes 17 seconds West 1,737.35 feet to a point having Coordinates of X = 1,860,010.48 and Y = 274,785.47 and South 39 degrees 20 minutes 26 seconds West 2,329.10 feet to a point having Coordinates of X = 1,858,534.00 and Y = 272,984.16; thence North 3,733.44 feet to the point of beginning; containing approximately **650.93 acres**, all as more particularly outlined on a plat on file in the Office of Mineral Resources, Department of Natural Resources. All bearings, distances and coordinates are based on Louisiana Coordinate System of 1927, (North or South Zone).

NOTE: The above description of the Tract nominated for lease has been provided and corrected, where required, exclusively by the nomination party. Any mineral lease selected from this Tract and awarded by the Louisiana State Mineral Board shall be without warranty of any kind, either express, implied, or statutory, including, but not limited to, the implied warranties of merchantability and fitness for a particular purpose. Should the mineral lease awarded by the Louisiana State Mineral Board be subsequently modified, cancelled or abrogated due to the existence of conflicting leases, operating agreements, private claims or

other future obligations or conditions which may affect all or any portion of the leased Tract, it shall not relieve the Lessee of the obligation to pay any bonus due thereon to the Louisiana State Mineral Board, nor shall the Louisiana State Mineral Board be obligated to refund any consideration paid by the Lessor prior to such modification, cancellation, or abrogation, including, but not limited to, bonuses, rentals and royalties.

NOTE: The Office of Mineral Resources will require a minimum bonus of \$300 per acre and a minimum royalty of 25%.




NOTE: The State of Louisiana does hereby reserve, and this lease shall be subject to, the imprescriptible right of surface use in the nature of a servitude in favor of the Department of Natural Resources, including its Offices and Commissions, for the sole purpose of implementing, constructing, servicing and maintaining approved coastal zone management and/or restoration projects. Utilization of any and all rights derived under this lease by the mineral lessee, its agents, successors or assigns, shall not interfere with nor hinder the reasonable surface use by the Department of Natural Resources, its Offices or Commissions, as herein above reserved.

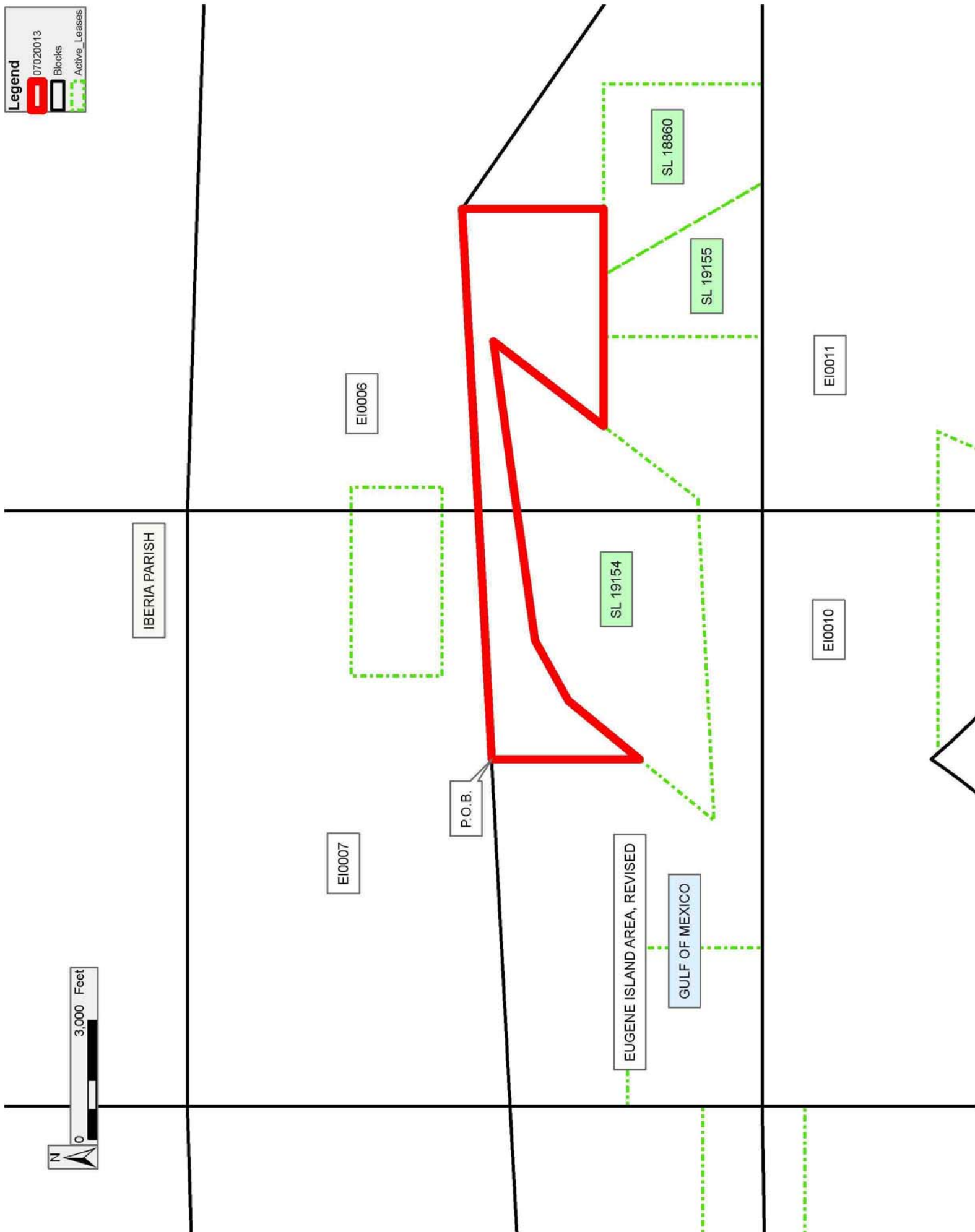
NOTE: The Department of Wildlife and Fisheries has designated certain areas in the coastal waters of the State of Louisiana as Oyster Seed Bed Areas. The exact location of those Seed Bed Areas must be obtained from the Department of Wildlife and Fisheries and any work done under a mineral lease from the State of Louisiana may necessarily be conducted in conformity with the rules and regulations promulgated by the said Department of Wildlife and Fisheries for Oyster Seed Bed Areas.

Applicant: CYPRESS ENERGY CORPORATION

Bidder	Cash Payment	Price/Acre	Rental	Oil	Gas	Other

Legend

-  07020013
-  Blocks
-  Active_Leases



TRACT 38858 - Portion of Blocks 11, and 6, Eugene Island Area, Revised, Iberia Parish, Louisiana

The beds and bottoms of all water bodies belonging to the State of Louisiana located in Blocks 11, and 6, Eugene Island Area, Revised, together with any present lands formed by accretion to the shoreline or islands formed therein, located in Iberia Parish, Louisiana, owned by and not presently under mineral lease as of February 14, 2007, from the State of Louisiana, the geographical area of which is more fully described as follows: Beginning at the Southwest corner of State Lease No. 18860, also being a point on the South line of Blocks 6, Eugene Island Area, Revised, having Coordinates of X = 1,873,069.10 and Y = 269,892.58; thence along the boundary of said State Lease No. 18860 the following courses: East 2,500.00 feet to a point having Coordinates of X = 1,875,569.10 and Y = 269,892.58; North 4,000.00 feet to a point having Coordinates of X = 1,875,569.10 and Y = 273,892.58 and West 3,151.10 feet to a point having Coordinates of X = 1,872,418.00 and Y = 273,892.58; thence North 3,567.42 feet to a point on the Louisiana Coastline, as decreed by the Supreme Court of the United States, as determined by a Special Master appointed therein, in litigation styled *United States v. State of Louisiana et al No. 9 Original*, in 1975, having Coordinates of X = 1,872,418 and Y = 277,460; thence Southeasterly, along a straight line, along said Louisiana Coastline to a point on the East line of said Block 6 having Coordinates of X = 1,879,822.72 and Y = 272,315.34; thence South 9,672.05 feet to a point on the East line of Block 11, Eugene Island Area, Revised, having Coordinates of X = 1,879,822.72 and Y = 262,643.29; thence West 6,753.62 feet to a point having Coordinates of X = 1,873,069.10 and Y = 262,643.29; thence North 7,249.29 feet to the point of beginning; containing approximately **1,683.70 acres**, all as more particularly outlined on a plat on file in the Office of Mineral Resources, Department of Natural Resources. All bearings, distances and coordinates are based on Louisiana Coordinate System of 1927, (North or South Zone).

NOTE: The above description of the Tract nominated for lease has been provided and corrected, where required, exclusively by the nomination party. Any mineral lease selected from this Tract and awarded by the Louisiana State Mineral Board shall be without warranty of any kind, either express, implied, or statutory, including, but not limited to, the implied warranties of merchantability and fitness for a particular purpose. Should the mineral lease awarded by the Louisiana State Mineral Board be subsequently modified, cancelled or abrogated due to the existence of conflicting leases, operating agreements, private claims or other future obligations or conditions which may affect all or any portion of the leased Tract, it shall not relieve the Lessee of the obligation to pay any bonus due thereon to the Louisiana State Mineral Board, nor shall the Louisiana State Mineral Board be obligated to refund any consideration paid by the Lessor prior to such modification, cancellation, or abrogation, including, but not limited to, bonuses, rentals and royalties.

NOTE: The Office of Mineral Resources will require a minimum bonus of \$300 per acre and a minimum royalty of 25%.




NOTE: The State of Louisiana does hereby reserve, and this lease shall be subject to, the imprescriptible right of surface use in the nature of a servitude in favor of the Department of Natural Resources, including its Offices and Commissions, for the sole purpose of implementing, constructing, servicing and maintaining approved coastal zone management and/or restoration projects. Utilization of any and all rights derived under this lease by the mineral lessee, its agents, successors or assigns, shall not interfere with nor hinder the reasonable surface use by the Department of Natural Resources, its Offices or Commissions, as herein above reserved.

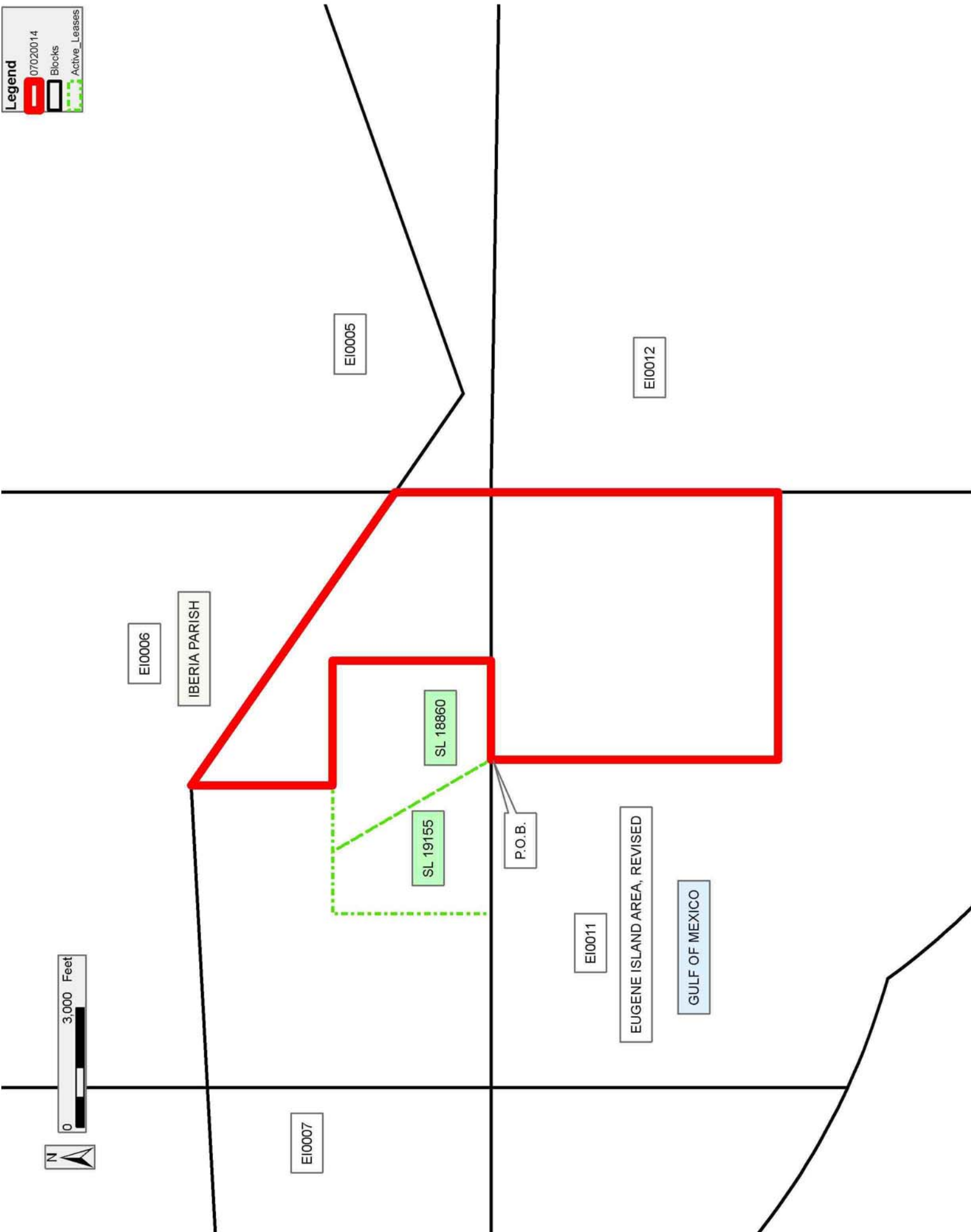
NOTE: The Department of Wildlife and Fisheries has designated certain areas in the coastal waters of the State of Louisiana as Oyster Seed Bed Areas. The exact location of those Seed Bed Areas must be obtained from the Department of Wildlife and Fisheries and any work done under a mineral lease from the State of Louisiana may necessarily be conducted in conformity with the rules and regulations promulgated by the said Department of Wildlife and Fisheries for Oyster Seed Bed Areas.

Applicant: BARKER ENERGY

Bidder	Cash Payment	Price/Acre	Rental	Oil	Gas	Other

Legend

-  07020014
-  Blocks
-  Active_Leases



TRACT 38859 - Portion of Blocks 7, and 8, Eugene Island Area, Revised, Iberia Parish, Louisiana

The beds and bottoms of all water bodies belonging to the State of Louisiana located in Blocks 7, and 8, Eugene Island Area, Revised, together with any present lands formed by accretion to the shoreline or islands formed therein, located in Iberia Parish, Louisiana, owned by and not presently under mineral lease as of February 14, 2007, from the State of Louisiana, the geographical area of which is more fully described as follows: Beginning at a point in Block 8, Eugene Island Area, Revised, also being the Northeast corner of State Lease No. 19152, also being a point on the Louisiana Coastline, as decreed by the Supreme Court of the United States, as determined by a Special Master appointed therein, in litigation styled *United States v. State of Louisiana et al No. 9 Original*, in 1975, having Coordinates of X = 1,843,318.00 and Y = 275,818.95; thence along said Louisiana Coastline the following courses: Northeasterly along a straight line to a point having Coordinates of X = 1,843,467 and Y = 275,912 and Northeasterly along a straight line to a point within Block 7, Eugene Island Area, Revised, having Coordinates of X = 1,858,534.00 and Y = 276,717.60; thence South 3,733.44 feet to a point on the Western boundary of State Lease No. 19154 having Coordinates of X = 1,858,534.00 and Y = 272,984.16; thence along the boundary of said State Lease No. 19154 the following courses: South 39 degrees 20 minutes 26 seconds West 2,427.89 feet to a point having Coordinates of X = 1,856,994.89 and Y = 271,106.45 and North 87 degrees 06 minutes 16 seconds East 1,541.08 feet to a point having Coordinates of X = 1,858,534.00 and Y = 271,184.30; thence South 1,291.72 feet to a point on the South line of said Block 7 having Coordinates of X = 1,858,534.00 and Y = 269,892.58; thence West 4,755.60 feet along the South line of said Block 7 to the Southeast corner of State Lease No. 17695 having Coordinates of X = 1,853,778.40 and Y = 269,892.58; thence along the boundary of said State Lease No. 17695 the following courses: North 3,400.00 feet to a point having Coordinates of X = 1,853,778.40 and Y = 273,292.58; West 4,000.00 feet to a point having Coordinates of X = 1,849,778.40 and Y = 273,292.58 and South 1,901.06 feet to the Southernmost Northeast corner of said State Lease No. 19152 having Coordinates of X = 1,849,778.40 and Y = 271,391.52; thence along the boundary of said State Lease No. 19152 the following courses: West 4,518.16 feet to a point having Coordinates of X = 1,845,260.24 and Y = 271,391.52; North 51 degrees 16 minutes 00 seconds West 839.24 feet to a point having Coordinates 1,844,605.57 and Y = 271,916.63; North 20 degrees 10 minutes 17 seconds West 3,429.46 feet to a point having Coordinates of X = 1,843,423.00 and Y = 275,135.75 and North 08 degrees 44 minutes 13 seconds West 691.22 feet to the point of beginning; containing approximately **1,603.75 acres**, all as more particularly outlined on a plat on file in the Office of Mineral Resources, Department of Natural Resources. All bearings, distances and coordinates are based on Louisiana Coordinate System of 1927, (North or South Zone).

NOTE: The above description of the Tract nominated for lease has been provided and corrected, where required, exclusively by the nomination party. Any mineral lease selected from this Tract and awarded by the Louisiana State Mineral Board shall be without warranty of any kind, either express, implied, or statutory, including, but not limited to, the implied warranties of merchantability and fitness for a particular purpose. Should the mineral lease awarded by the Louisiana State Mineral Board be subsequently modified, cancelled or abrogated due to the existence of conflicting leases, operating agreements, private claims or other future obligations or conditions which may affect all or any portion of the leased Tract, it shall not relieve the Lessee of the obligation to pay any bonus due thereon to the Louisiana State Mineral Board, nor shall the Louisiana State Mineral Board be obligated to refund any consideration paid by the Lessor prior to such modification, cancellation, or abrogation, including, but not limited to, bonuses, rentals and royalties.

NOTE: The Office of Mineral Resources will require a minimum bonus of \$300 per acre and a minimum royalty of 25%.

NOTE: The State of Louisiana does hereby reserve, and this lease shall be subject to, the imprescriptible right of surface use in the nature of a servitude in favor of the Department of Natural Resources, including its Offices and Commissions, for the sole purpose of implementing, constructing, servicing and maintaining approved coastal zone management and/or restoration projects. Utilization of any and all rights derived under this lease by the mineral lessee, its agents, successors or assigns, shall not interfere with nor hinder the reasonable surface use by the Department of Natural Resources, its Offices or Commissions, as herein above reserved.

NOTE: The Department of Wildlife and Fisheries has designated certain areas in the coastal waters of the State of Louisiana as Oyster Seed Bed Areas. The exact location of those Seed Bed Areas must be obtained from the Department of Wildlife and Fisheries and any work done under a mineral lease from the State of Louisiana may necessarily be conducted in conformity with the rules and regulations promulgated by the said Department of Wildlife and Fisheries for Oyster Seed Bed Areas.

Bidder	Cash Payment	Price/Acre	Rental	Oil	Gas	Other

Applicant: CYPRESS ENERGY CORPORATION

Legend

- 07020012
- Blocks
- Active_Leases



TRACT 38860 - Portion of Blocks 10, 11, 6, and 7, Eugene Island Area, Revised, Iberia Parish, Louisiana

The beds and bottoms of all water bodies belonging to the State of Louisiana located in Blocks 10, 11, 6, and 7, Eugene Island Area, Revised, together with any present lands formed by accretion to the shoreline or islands formed therein, located in Iberia Parish, Louisiana, owned by and not presently under mineral lease as of February 14, 2007, from the State of Louisiana, the geographical area of which is more fully described as follows: Beginning at a point located in Block 7, Eugene Island Area, Revised, also being a point on the South boundary of State Lease No. 19154 having Coordinates of X = 1,858,534.00 and Y = 271,184.30; thence along the boundary of said State Lease No. 19154 the following courses: North 87 degrees 06 minutes 16 seconds East 6,576.35 feet to a point having Coordinates of X = 1,865,101.95 and Y = 271,516.52 and North 37 degrees 42 minutes 03 seconds East 3,003.05 feet to a point having Coordinates of X = 1,866,938.43 and Y = 273,892.58; thence East 2,250.13 feet to the Northwest corner of State Lease No. 19155 having Coordinates of X = 1,869,188.56 and Y = 273,892.58; thence along the boundary of said State Lease No. 19155 the following courses: South 4,000.00 feet to a point having Coordinates of X = 1,869,188.56 and Y = 269,892.58 and East 3,880.54 feet to its Southeast corner, also being the Southwest corner of State Lease No. 18860 and a point on the North line of Block 11, Eugene Island Area, Revised, having Coordinates of X = 1,873,069.10 and Y = 269,892.58; thence South 6,039.29 feet to a point having Coordinates of X = 1,873,069.10 and Y = 263,853.29; thence West 6,972.51 feet to a point on the East boundary of State Lease No. 18640 having Coordinates of X = 1,866,096.59 and Y = 263,853.29; thence along the boundary of said State Lease No. 18640 the following courses: North 23 degrees 35 minutes 42 seconds East 1,758.75 feet to a point having Coordinates of X = 1,866,800.56 and Y = 265,465.00 and West 8,124.27 feet to its Northwest corner, also being a point on the Three Mile Line, as decreed by the Supreme Court of the United States, as determined by a Special Master appointed therein, in litigation styled *United States v. State of Louisiana et al No. 9 Original*, in 1975, having Coordinates of X = 1,858,676.29 and Y = 265,465.00; thence, along said Three Mile Line, on an arc to the right having a radius of 18,240.60 feet and center at X = 1,872,418 and Y = 277,460 to a point having Coordinates of X = 1,858,534 and Y = 265,630; thence North approximately 5,554 feet to the point of beginning; containing approximately **2,267.07 acres, LESS AND EXCEPT** that portion thereof, if any, lying seaward of the line three nautical miles from the coast line of Louisiana, as said three mile line has been decreed by the Supreme Court of the United States, as determined by a Special Master appointed therein, in litigation styled **United States v. State of Louisiana et al No. 9 Original**, in 1975, all as more particularly outlined on a plat in the Office of Mineral Resources, Department of Natural Resources. All bearings, distances and coordinates are based on the Louisiana Coordinate System of 1927, (South Zone).

NOTE: The above description of the Tract nominated for lease has been provided and corrected, where required, exclusively by the nomination party. Any mineral lease selected from this Tract and awarded by the Louisiana State Mineral Board shall be without warranty of any kind, either express, implied, or statutory, including, but not limited to, the implied warranties of merchantability and fitness for a particular purpose. Should the mineral lease awarded by the Louisiana State Mineral Board be subsequently modified, cancelled or abrogated due to the existence of conflicting leases, operating agreements, private claims or other future obligations or conditions which may affect all or any portion of the leased Tract, it shall not relieve the Lessee of the obligation to pay any bonus due thereon to the Louisiana State Mineral Board, nor shall the Louisiana State Mineral Board be obligated to refund any consideration paid by the Lessor prior to such modification, cancellation, or abrogation, including, but not limited to, bonuses, rentals and royalties.

NOTE: The State of Louisiana does hereby reserve, and this lease shall be subject to, the imprescriptible right of surface use in the nature of a servitude in favor of the Department of Natural Resources, including its Offices and Commissions, for the sole purpose of implementing, constructing, servicing and maintaining approved coastal zone management and/or restoration projects. Utilization of any and all rights derived under this lease by the mineral lessee, its agents, successors or assigns, shall not interfere with nor hinder the reasonable surface use by the Department of Natural Resources, its Offices or Commissions, as herein above reserved.

NOTE: The Department of Wildlife and Fisheries has designated certain areas in the coastal waters of the State of Louisiana as Oyster Seed Bed Areas. The exact location of those Seed Bed Areas must be obtained from the Department of Wildlife and Fisheries and any work done under a mineral lease from the State of Louisiana may necessarily be conducted in conformity with the rules and regulations promulgated by the said Department of Wildlife and Fisheries for Oyster Seed Bed Areas.

Applicant: CYPRESS ENERGY CORPORATION

Bidder	Cash Payment	Price/Acre	Rental	Oil	Gas	Other

Legend

- 07020016
- Blocks
- Active_Leases

