

TRACT 38084 - Terrebonne Parish, Louisiana

All of the lands now or formerly constituting the beds and bottoms of all water bodies of every nature and description the title of which vests in the State of Louisiana, together with all islands arising therein and other lands formed by accretion or by reliction, where allowed by law, excepting tax adjudicated lands, and not presently under mineral lease on February 8, 2006, situated in Terrebonne Parish, Louisiana, and more particularly described as follows: Beginning at a point having Coordinates of X = 2,206,375.54 and Y = 277,957.90; thence East 6,477.00 feet to a point on the West boundary of State Lease No. 17754, having Coordinates of X = 2,212,852.54 and Y = 277,957.90; thence South 4,053.76 feet along said West boundary of said State Lease No. 17754 to its Southwest corner, also being the Northwest corner of State Lease No. 17968, having Coordinates of X = 2,212,852.54 and Y = 273,904.14; thence West 6,476.84 feet to a point having Coordinates of X = 2,206,375.70 and Y = 273,904.14; thence North 00 degrees 00 minutes 08 seconds West 4,053.76 feet to the point of beginning, containing approximately **440 acres**, all as more particularly outlined on a plat on file in the Office of Mineral Resources, Department of Natural Resources. All bearings, distances and coordinates are based on Louisiana Coordinate System of 1927, (North or South Zone), where applicable.

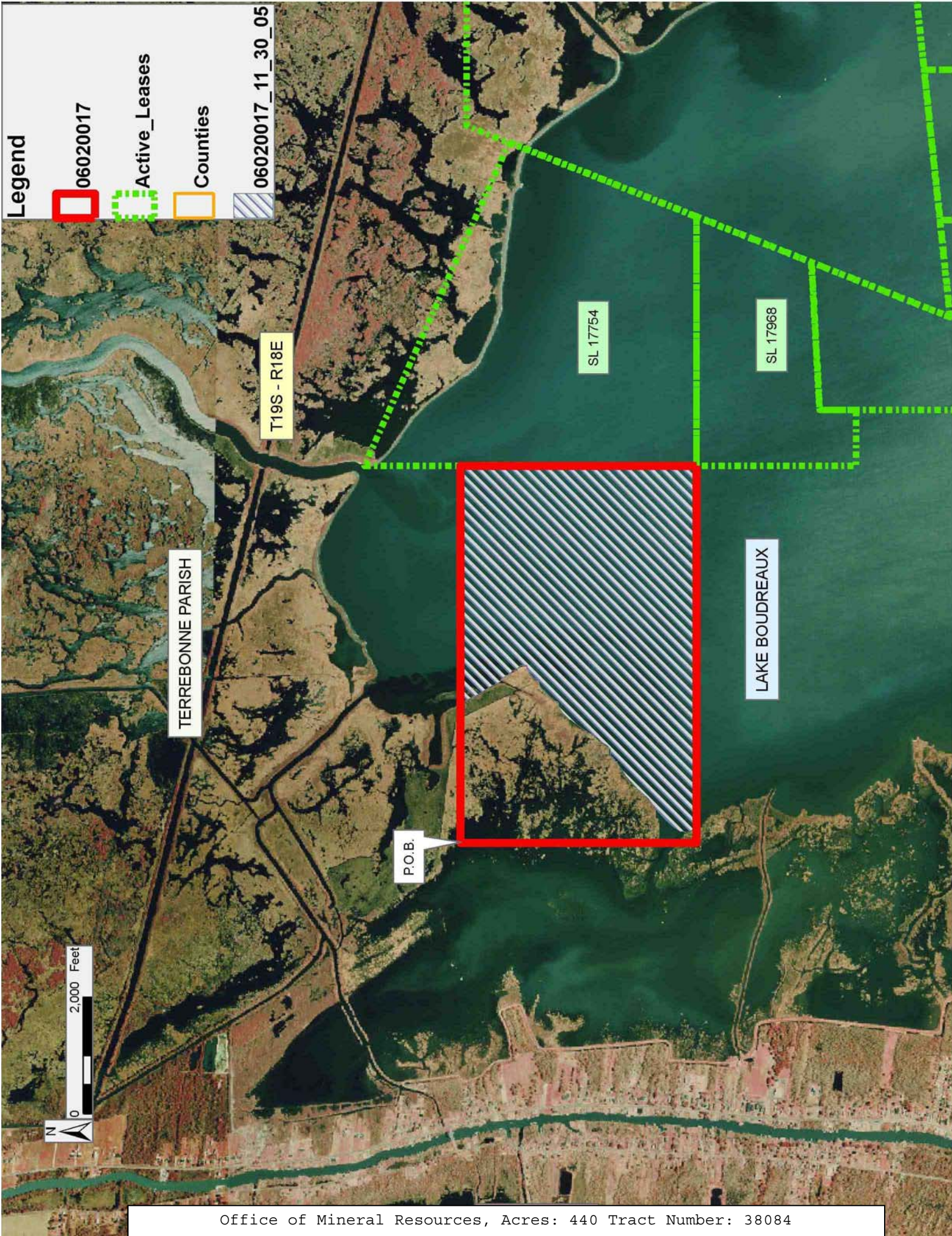
NOTE: The above description of the Tract nominated for lease has been provided and corrected, where required, exclusively by the nomination party. Any mineral lease selected from this Tract and awarded by the Louisiana State Mineral Board shall be without warranty of any kind, either express, implied, or statutory, including, but not limited to, the implied warranties of merchantability and fitness for a particular purpose. Should the mineral lease awarded by the Louisiana State Mineral Board be subsequently modified, cancelled or abrogated due to the existence of conflicting leases, operating agreements, private claims or other future obligations or conditions which may affect all or any portion of the leased Tract, it shall not relieve the Lessee of the obligation to pay any bonus due thereon to the Louisiana State Mineral Board, nor shall the Louisiana State Mineral Board be obligated to refund any consideration paid by the Lessor prior to such modification, cancellation, or abrogation, including, but not limited to, bonuses, rentals and royalties.

NOTE: The State of Louisiana does hereby reserve, and this lease shall be subject to, the imprescriptible right of surface use in the nature of a servitude in favor of the Department of Natural Resources, including its Offices and Commissions, for the sole purpose of implementing, constructing, servicing and maintaining approved coastal zone management and/or restoration projects. Utilization of any and all rights derived under this lease by the mineral lessee, its agents, successors or assigns, shall not interfere with nor hinder the reasonable surface use by the Department of Natural Resources, its Offices or Commissions, as herein above reserved.

NOTE: The Department of Wildlife and Fisheries has designated certain areas in the coastal waters of the State of Louisiana as Oyster Seed Bed Areas. The exact location of those Seed Bed Areas must be obtained from the Department of Wildlife and Fisheries and any work done under a mineral lease from the State of Louisiana may necessarily be conducted in conformity with the rules and regulations promulgated by the said Department of Wildlife and Fisheries for Oyster Seed Bed Areas.

Applicant: THEOPHILUS OIL GAS & LAND SERVICES LLC

Bidder	Cash Payment	Price/Acre	Rental	Oil	Gas	Other



Legend

06020017

Active_Leases

Counties

06020017_11_30_05

TERREBONNE PARISH

T19S - R18E

SL 17754

SL 17968

LAKE BOUDREAUX

P.O.B.



TRACT 38085 - Terrebonne Parish, Louisiana

All of the lands now or formerly constituting the beds and bottoms of all water bodies of every nature and description the title of which vests in the State of Louisiana, together with all islands arising therein and other lands formed by accretion or by reliction, where allowed by law, excepting tax adjudicated lands, and not presently under mineral lease on February 8, 2006, situated in Terrebonne Parish, Louisiana, and more particularly described as follows: Beginning at a point having Coordinates of X = 2,206,375.70 and Y = 273,904.14; thence East 6,476.84 feet to the Southwest corner of State Lease No. 17754, also being the Northwest corner of State Lease No. 17968, having Coordinates of X = 2,212,852.54 and Y = 273,904.14; thence along the boundary of said State Lease No. 17968 the following courses and distances: South 2,736.25 feet and East 955.44 feet to a point on its Southern boundary, also being a point on the West boundary of State Lease No. 17967, having Coordinates of X = 2,213,807.98 and Y = 271,167.89; thence South 950.89 feet along said West boundary of said State Lease No. 17967 to a point having Coordinates of X = 2,213,807.98 and Y = 270,217.00; thence North 89 degrees 35 minutes 01 seconds West 7,432.33 feet to a point having Coordinates of X = 2,206,375.85 and Y = 270,271.00; thence North 00 degrees 00 minutes 09 seconds West 3,633.14 feet to the point of beginning, containing approximately **510 acres**, all as more particularly outlined on a plat on file in the Office of Mineral Resources, Department of Natural Resources. All bearings, distances and coordinates are based on Louisiana Coordinate System of 1927, (North or South Zone), where applicable.

NOTE: The above description of the Tract nominated for lease has been provided and corrected, where required, exclusively by the nomination party. Any mineral lease selected from this Tract and awarded by the Louisiana State Mineral Board shall be without warranty of any kind, either express, implied, or statutory, including, but not limited to, the implied warranties of merchantability and fitness for a particular purpose. Should the mineral lease awarded by the Louisiana State Mineral Board be subsequently modified, cancelled or abrogated due to the existence of conflicting leases, operating agreements, private claims or other future obligations or conditions which may affect all or any portion of the leased Tract, it shall not relieve the Lessee of the obligation to pay any bonus due thereon to the Louisiana State Mineral Board, nor shall the Louisiana State Mineral Board be obligated to refund any consideration paid by the Lessor prior to such modification, cancellation, or abrogation, including, but not limited to, bonuses, rentals and royalties.

NOTE: The State of Louisiana does hereby reserve, and this lease shall be subject to, the imprescriptible right of surface use in the nature of a servitude in favor of the Department of Natural Resources, including its Offices and Commissions, for the sole purpose of implementing, constructing, servicing and maintaining approved coastal zone management and/or restoration projects. Utilization of any and all rights derived under this lease by the mineral lessee, its agents, successors or assigns,

shall not interfere with nor hinder the reasonable surface use by the Department of Natural Resources, its Offices or Commissions, as herein above reserved.

NOTE: The Department of Wildlife and Fisheries has designated certain areas in the coastal waters of the State of Louisiana as Oyster Seed Bed Areas. The exact location of those Seed Bed Areas must be obtained from the Department of Wildlife and Fisheries and any work done under a mineral lease from the State of Louisiana may necessarily be conducted in conformity with the rules and regulations promulgated by the said Department of Wildlife and Fisheries for Oyster Seed Bed Areas.

Applicant: THEOPHILUS OIL GAS & LAND SERVICES LLC

Bidder	Cash Payment	Price/Acre	Rental	Oil	Gas	Other



Legend

06020018

Active_Leases

Counties

06020018_11_30_05

SL 17754

SL 17968

SL 17967

LAKE BOUDREAU

TERREBONNE PARISH

P.O.B.

T19S - R18E

T19S - R17E

0 2,000 Feet

N

TRACT 38086 - Portion of Blocks 48, and 52, Main Pass Area, Revised, Plaquemines Parish, Louisiana

All of the lands now or formerly constituting the beds and bottoms of all water bodies of every nature and description the title of which vests in the State of Louisiana, together with all islands arising therein and other lands formed by accretion or by reliction, where allowed by law, excepting tax adjudicated lands, and not presently under mineral lease on February 8, 2006, situated in Plaquemines Parish, Louisiana, and more particularly described as follows: Beginning at a point within Block 48, Main Pass Area, Revised, having Coordinates of X = 2,640,940.00 and Y = 264,958.00; thence North 84 degrees 34 minutes 23 seconds East 11,863.18 feet to the Northwest corner of State Lease No. 16664, being a point on the South line of State Lease No. 1268, as amended, also being a point within Block 52, Main Pass Area, Revised, having Coordinates of X = 2,652,750.00 and Y = 266,080.00; thence along the boundary of said State Lease No. 16664 the following: South 1,223.84 feet and North 87 degrees 38 minutes 44 seconds East 829.18 feet to a point having Coordinates of X = 2,653,578.48 and Y = 264,890.22; thence South 25 degrees 02 minutes 28 seconds East 2,172.42 feet to a point having Coordinates of X = 2,654,498.00 and Y = 262,922.00; thence Southwesterly to a point on the Northern boundary of State Lease No. 195; thence Westerly along said Northern boundary to the Southeast corner of State Lease No. 18579 having Coordinates of X = 2,650,191.00 and Y = 260,395.40; thence along the boundary of said State Lease No. 18579 the following: North 21 degrees 11 minutes 44 seconds West 1,927.81 feet, South 89 degrees 36 minutes 31 seconds West 3,148.07 feet and South 03 degrees 27 minutes 48 seconds East 1,870.52 feet to a point having Coordinates of X = 2,646,459.00 and Y = 260,304.20, also being a point on said Northern boundary of said State Lease No. 195; thence Westerly along said Northern boundary of said State Lease No. 195 to the Southeast corner of State Lease No. 18580; thence along the boundary of said State Lease No. 18580 the following: Northwesterly to a point having Coordinates of X = 2,641,180.00 and Y = 263,302.00 and South 66 degrees 48 minutes 22 seconds West 581.28 feet to a point having Coordinates of X = 2,640,645.70 and Y = 263,073.06; thence North 08 degrees 52 minutes 27 seconds East 1,907.77 feet to the point of beginning, **LESS AND EXCEPT** all that portion of State Lease No. 195 and any privately owned land that may be located within the above described Tract, if any, comprising approximately (30.63 acres), that may lie within the above described tract, containing approximately 1,087.15 gross acres and approximately **1,056.52 net acres**, all as more particularly outlined on a plat on file in the Office of Mineral Resources, Department of Natural Resources. All bearings, distances and coordinates are based on Louisiana Coordinate System of 1927, (North or South Zone), where applicable.

NOTE: The above description of the Tract nominated for lease has been provided and corrected, where required, exclusively by the nomination party. Any mineral lease selected from this Tract and awarded by the Louisiana State Mineral Board shall be without warranty of any kind, either express, implied, or statutory, including, but not limited to, the

implied warranties of merchantability and fitness for a particular purpose. Should the mineral lease awarded by the Louisiana State Mineral Board be subsequently modified, cancelled or abrogated due to the existence of conflicting leases, operating agreements, private claims or other future obligations or conditions which may affect all or any portion of the leased Tract, it shall not relieve the Lessee of the obligation to pay any bonus due thereon to the Louisiana State Mineral Board, nor shall the Louisiana State Mineral Board be obligated to refund any consideration paid by the Lessor prior to such modification, cancellation, or abrogation, including, but not limited to, bonuses, rentals and royalties.

NOTE: The State of Louisiana does hereby reserve, and this lease shall be subject to, the imprescriptible right of surface use in the nature of a servitude in favor of the Department of Natural Resources, including its Offices and Commissions, for the sole purpose of implementing, constructing, servicing and maintaining approved coastal zone management and/or restoration projects. Utilization of any and all rights derived under this lease by the mineral lessee, its agents, successors or assigns, shall not interfere with nor hinder the reasonable surface use by the Department of Natural Resources, its Offices or Commissions, as herein above reserved.

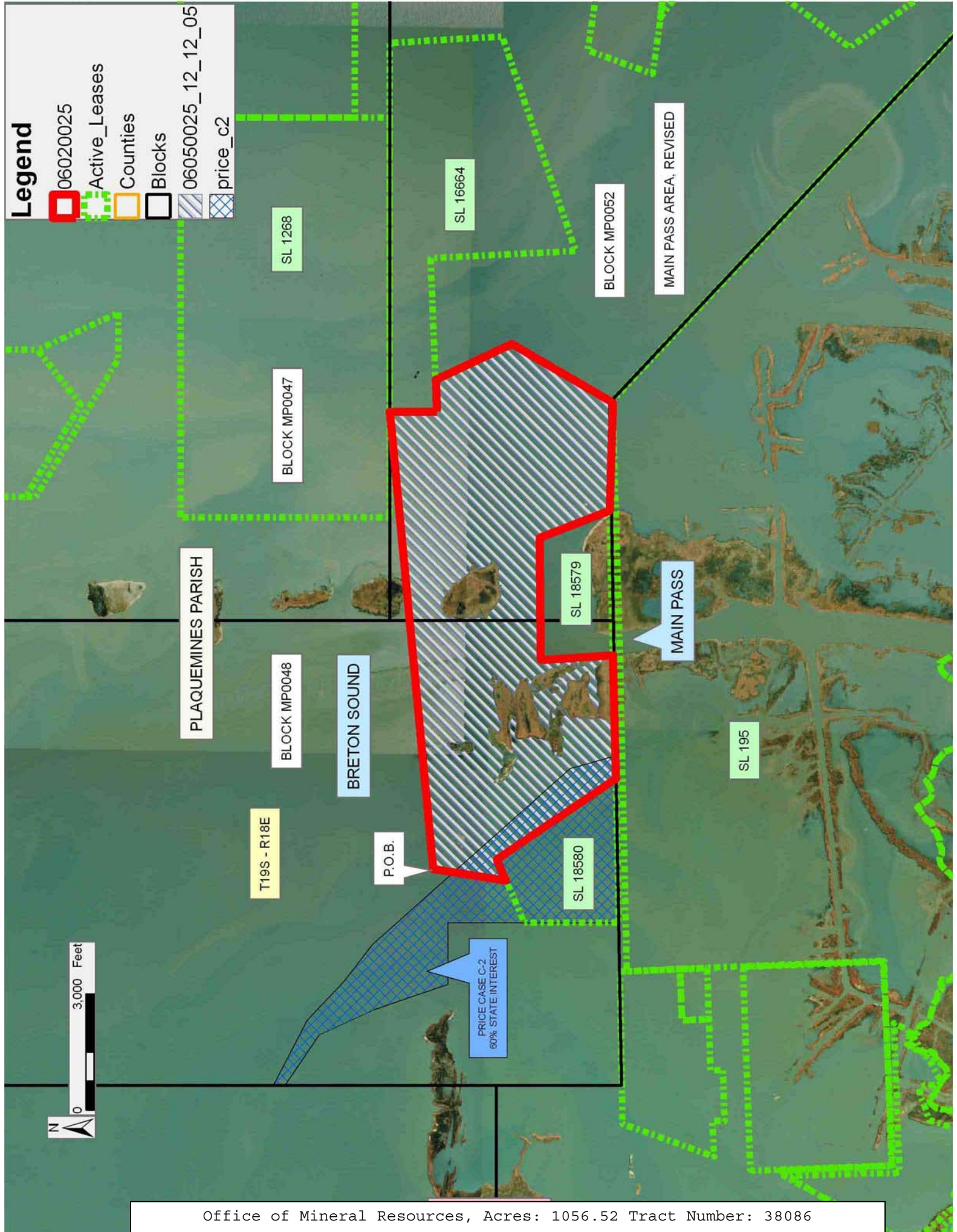
NOTE: The Department of Wildlife and Fisheries has designated certain areas in the coastal waters of the State of Louisiana as Oyster Seed Bed Areas. The exact location of those Seed Bed Areas must be obtained from the Department of Wildlife and Fisheries and any work done under a mineral lease from the State of Louisiana may necessarily be conducted in conformity with the rules and regulations promulgated by the said Department of Wildlife and Fisheries for Oyster Seed Bed Areas.

Applicant: THEOPHILUS OIL GAS & LAND SERVICES LLC

Bidder	Cash Payment	Price/Acre	Rental	Oil	Gas	Other

Legend

- 06020025
- Active_Leases
- Countries
- Blocks
- 06050025_12_12_05
- price_c2



TRACT 38087 - Portion of Block 52, Main Pass Area, Revised, Plaquemines Parish, Louisiana

All of the lands now or formerly constituting the beds and bottoms of all water bodies of every nature and description the title of which vests in the State of Louisiana, together with all islands arising therein and other lands formed by accretion or by reliction, where allowed by law, excepting tax adjudicated lands, and not presently under mineral lease on February 8, 2006, situated in Plaquemines Parish, Louisiana, and more particularly described as follows: Beginning at a point within Block 52, Main Pass Area, Revised, also being a point on the boundary of State Lease No. 16664, having Coordinates of X = 2,653,578.48 and Y = 264,890.22; thence along the boundary of said State Lease No. 16664 the following courses and distances: North 87 degrees 38 minutes 44 seconds East 3,132.16 feet, South 02 degrees 59 minutes 38 seconds East 3,752.82 feet, and North 71 degrees 05 minutes 36 seconds East 5,863.35 feet to its most Easterly Southeast corner, having Coordinates of X = 2,662,451.00 and Y = 263,171.10; thence South 09 degrees 17 minutes 08 seconds West 2,243.50 feet to the Northwest corner of State Lease No. 16849, as amended, having Coordinates of X = 2,662,089.00 and Y = 260,957.00; thence South 19 degrees 56 minutes 33 seconds West 1,781.60 feet along the West line of said State Lease No. 16849 to its Southwest corner, having Coordinates of X = 2,661,481.34 and Y = 259,282.23; thence Westerly approximately 8,558 feet to a point on the boundary of State Lease No. 195; thence Northeasterly to a point having Coordinates of X = 2,654,498.00 and Y = 262,922.00; thence North 25 degrees 02 minutes 28 seconds West 2,172.42 feet to the point of beginning, containing approximately **647 acres**, all as more particularly outlined on a plat on file in the Office of Mineral Resources, Department of Natural Resources. All bearings, distances and coordinates are based on Louisiana Coordinate System of 1927, (North or South Zone), where applicable.

NOTE: The above description of the Tract nominated for lease has been provided and corrected, where required, exclusively by the nomination party. Any mineral lease selected from this Tract and awarded by the Louisiana State Mineral Board shall be without warranty of any kind, either express, implied, or statutory, including, but not limited to, the implied warranties of merchantability and fitness for a particular purpose. Should the mineral lease awarded by the Louisiana State Mineral Board be subsequently modified, cancelled or abrogated due to the existence of conflicting leases, operating agreements, private claims or other future obligations or conditions which may affect all or any portion of the leased Tract, it shall not relieve the Lessee of the obligation to pay any bonus due thereon to the Louisiana State Mineral Board, nor shall the Louisiana State Mineral Board be obligated to refund any consideration paid by the Lessor prior to such modification, cancellation, or abrogation, including, but not limited to, bonuses, rentals and royalties.

NOTE: The State of Louisiana does hereby reserve, and this lease shall be subject to, the imprescriptible right of surface use in the nature of a

servitude in favor of the Department of Natural Resources, including its Offices and Commissions, for the sole purpose of implementing, constructing, servicing and maintaining approved coastal zone management and/or restoration projects. Utilization of any and all rights derived under this lease by the mineral lessee, its agents, successors or assigns, shall not interfere with nor hinder the reasonable surface use by the Department of Natural Resources, its Offices or Commissions, as herein above reserved.

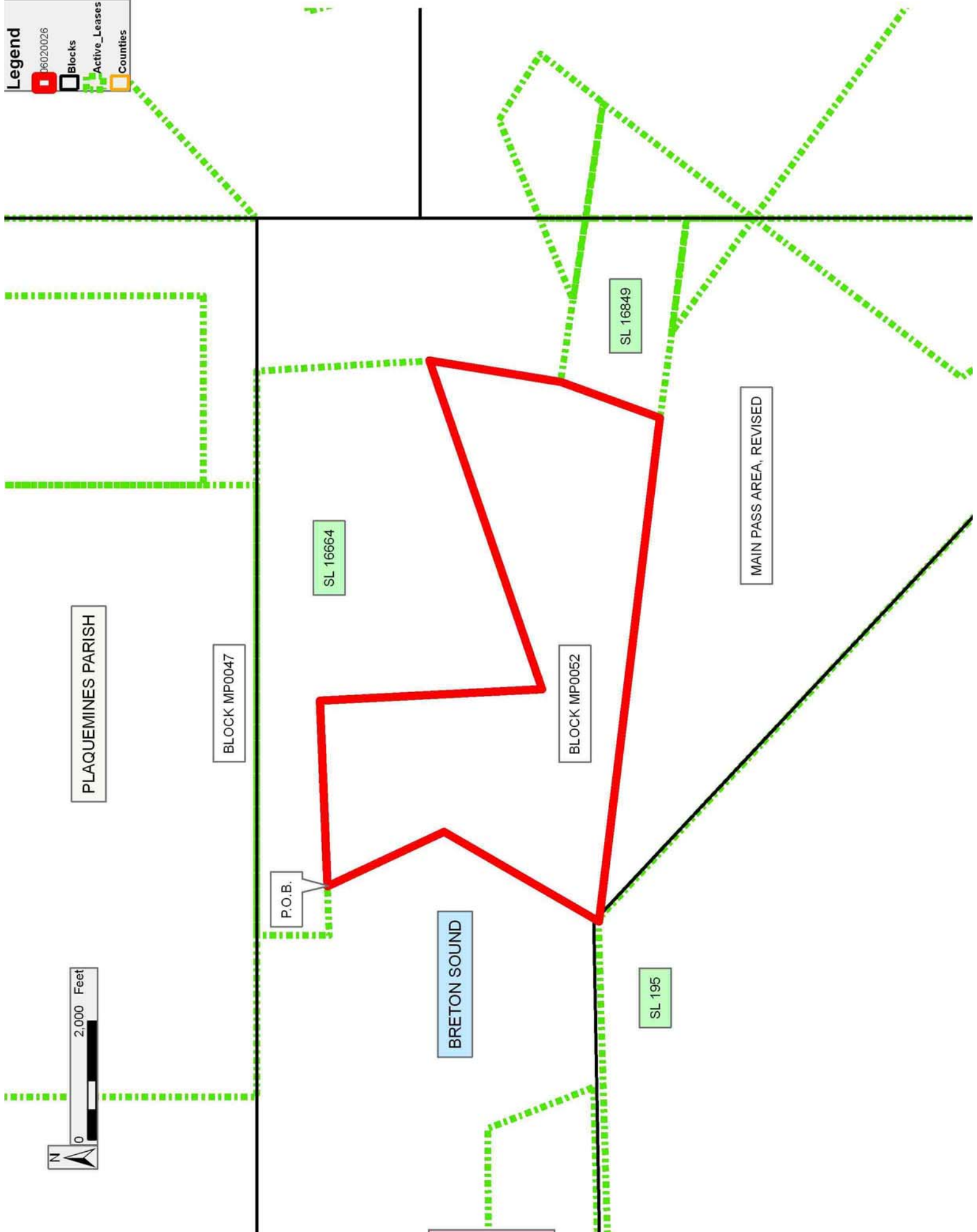
NOTE: The Department of Wildlife and Fisheries has designated certain areas in the coastal waters of the State of Louisiana as Oyster Seed Bed Areas. The exact location of those Seed Bed Areas must be obtained from the Department of Wildlife and Fisheries and any work done under a mineral lease from the State of Louisiana may necessarily be conducted in conformity with the rules and regulations promulgated by the said Department of Wildlife and Fisheries for Oyster Seed Bed Areas.

Applicant: THEOPHILUS OIL GAS & LAND SERVICES LLC

Bidder	Cash Payment	Price/Acre	Rental	Oil	Gas	Other

Legend

- 16020026
- Blocks
- Active_Leases
- Counties



TRACT 38088 - Terrebonne Parish, Louisiana

All of the lands now or formerly constituting the beds and bottoms of all water bodies of every nature and description the title of which vests in the State of Louisiana, together with all islands arising therein and other lands formed by accretion or by reliction, where allowed by law, excepting tax adjudicated lands, and not presently under mineral lease on February 8, 2006, situated in Terrebonne Parish, Louisiana, and more particularly described as follows: Beginning at a point having Coordinates of X = 2,167,294.53 and Y = 253,782.23; thence South 10,565.31 feet to a point having Coordinates of X = 2,167,294.53 and Y = 243,216.92; thence West 10,822.41 feet to a point having Coordinates of X = 2,156,472.12 and Y = 243,216.92; thence North 01 degrees 58 minutes 54 seconds East 5,219.65 feet to the Southwest corner of State Lease No. 18583, as amended, having Coordinates of X = 2,156,652.62 and Y = 248,433.45; thence East 5,543.57 feet along the South boundary of said State Lease No. 18583, as amended, to its Southeast corner having Coordinates of X = 2,162,196.19 and Y = 248,433.45; thence North 2,704.31 feet along the East boundary of said State Lease No. 18583, as amended, to its Northeast corner having Coordinates of X = 2,162,196.19 and Y = 251,137.76; thence West 5,543.57 feet along the North boundary of said State Lease No. 18583, as amended, to its Northwest corner having Coordinates of X = 2,156,652.62 and Y = 251,137.76; thence North 2,638.53 feet to a point having Coordinates of X = 2,156,652.62 and Y = 253,776.29; thence North 89 degrees 58 minutes 05 seconds East 5,944.26 feet to the Southwest corner of State Lease No. 17940, as amended, having Coordinates of X = 2,162,596.88 and Y = 253,779.61; thence North 89 degrees 58 minutes 05 seconds East 3,437.93 feet along the South boundary of said State Lease No. 17940, as amended, to its Southeast corner having Coordinates of X = 2,166,034.81 and Y = 253,781.53; thence North 89 degrees 58 minutes 05 seconds East 1,259.72 feet to the point of beginning containing approximately **50 acres**, all as more particularly outlined on a plat on file in the Office of Mineral Resources, Department of Natural Resources. All bearings, distances and coordinates are based on Louisiana Coordinate System of 1927, (North or South Zone), where applicable.

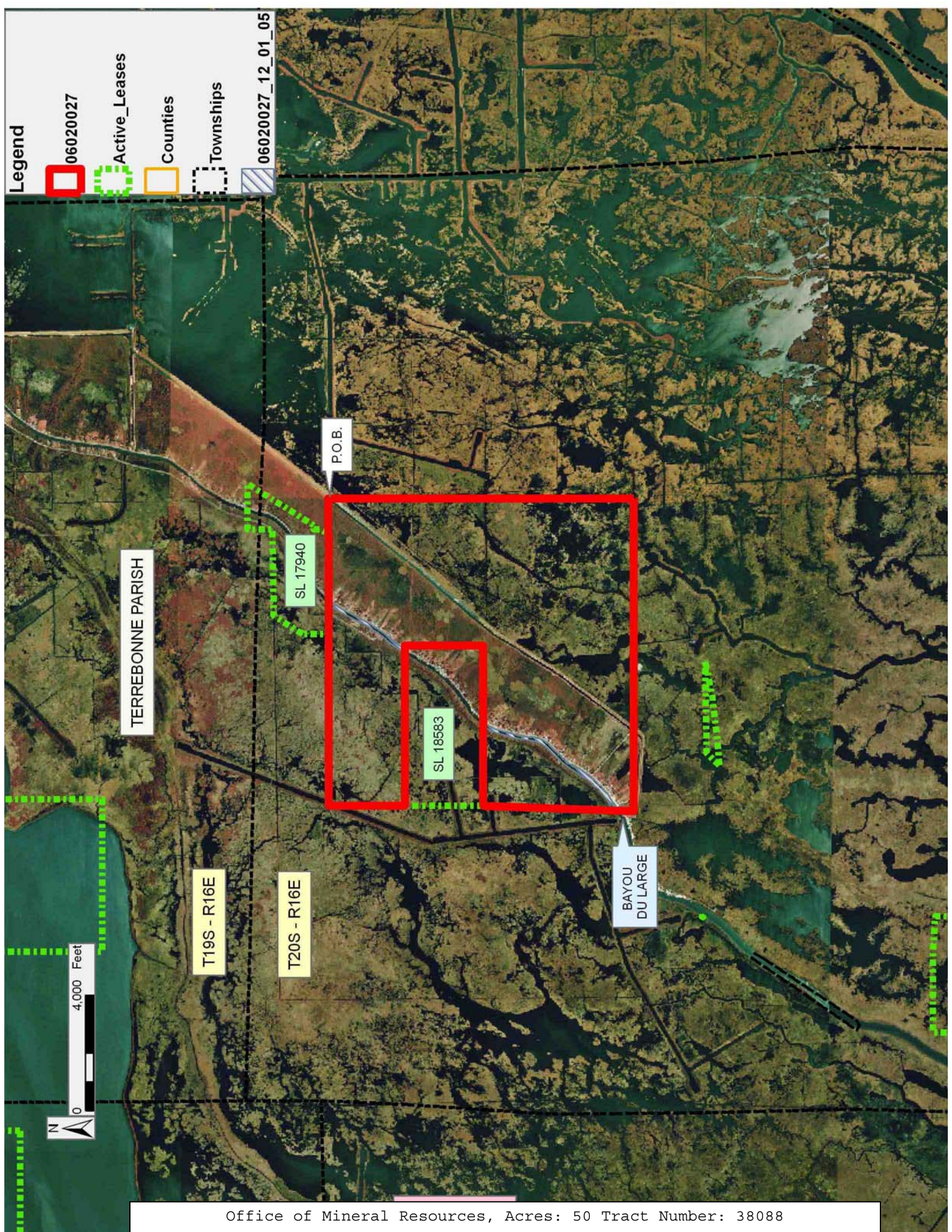
NOTE: The above description of the Tract nominated for lease has been provided and corrected, where required, exclusively by the nomination party. Any mineral lease selected from this Tract and awarded by the Louisiana State Mineral Board shall be without warranty of any kind, either express, implied, or statutory, including, but not limited to, the implied warranties of merchantability and fitness for a particular purpose. Should the mineral lease awarded by the Louisiana State Mineral Board be subsequently modified, cancelled or abrogated due to the existence of conflicting leases, operating agreements, private claims or other future obligations or conditions which may affect all or any portion of the leased Tract, it shall not relieve the Lessee of the obligation to pay any bonus due thereon to the Louisiana State Mineral Board, nor shall the Louisiana State Mineral Board be obligated to refund any consideration

paid by the Lessor prior to such modification, cancellation, or abrogation, including, but not limited to, bonuses, rentals and royalties.

NOTE: The State of Louisiana does hereby reserve, and this lease shall be subject to, the imprescriptible right of surface use in the nature of a servitude in favor of the Department of Natural Resources, including its Offices and Commissions, for the sole purpose of implementing, constructing, servicing and maintaining approved coastal zone management and/or restoration projects. Utilization of any and all rights derived under this lease by the mineral lessee, its agents, successors or assigns, shall not interfere with nor hinder the reasonable surface use by the Department of Natural Resources, its Offices or Commissions, as herein above reserved.

Applicant: ENERGY LEASE & PERMIT, INC.

Bidder	Cash Payment	Price/Acre	Rental	Oil	Gas	Other



Legend

06020027

Active_Leases

Counties

Townships

06020027_12_01_05

TERREBONNE PARISH

T19S - R16E

T20S - R16E

BAYOU
DU LARGE

P.O.B.

SL 17940

SL 18583

4,000 Feet

N