

**TRACT 37173 - Acadia Parish, Louisiana**

All of the mineral rights only under land adjudicated to and acquired by the State of Louisiana in and through a proper tax sale, and subsequently alienated by the State which retained the mineral rights thereto, and which is not under valid mineral lease from the State of Louisiana on February 9, 2005, situated in Acadia Parish, Louisiana, and being more fully described as follows: Beginning at a point having Coordinates of X = 1,631,870.00 and Y = 550,600.00; thence West 860.00 feet to a point on the boundary of the production unit identified as the HAYES B RC SUA created by the Louisiana Office of Conservation Order No. 210 - F - 2 for Midland Field having Coordinates of X = 1,631,010.00 and Y = 550,600.00; thence along the boundary of said HAYES B RC SUA the following courses: North 46 degrees 07 minutes 24 seconds West 360.69 feet to a point having Coordinates of X = 1,630,750.00 and Y = 550,850.00 and North 51 degrees 20 minutes 25 seconds West 384.19 feet to a point having Coordinates of X = 1,630,450.00 and Y = 551,090.00; thence North 1,000.00 feet to a point having Coordinates of X = 1,630,450.00 and Y = 552,090.00; thence East 1,420.00 feet to a point having Coordinates of X = 1,631,870.00 and Y = 552,090.00; thence South 1,490.00 feet to the point of beginning, More specifically containing the following Tax Adjudicated properties:

Tract 1: Lots 19 and 20, Block 9, Cowen Addition, Midland, Louisiana, adjudicated to the State of Louisiana for the non-payment of taxes for the year 1907 in the name of William Danum, in that certain Tax Sale dated May 16, 1908, containing approximately 0.2204 acre;

Tract 2: Lots 11 and 12, Block 8, Cowen Addition, Midland, Louisiana, adjudicated to the State of Louisiana for the non-payment of taxes for the year 1916 in the name of James B. Cade, in that certain Tax Sale dated June 23, 1917 containing approximately 0.2204 acre;

Tract 3: Lots 13 and 14, Block 6, Cowen Addition, Midland, Louisiana, adjudicated to the State of Louisiana for the non-payment of taxes for the year 1918 in the name of Mrs. A.D. Roussell, in that certain Tax Sale dated July 26, 1919 containing approximately 0.2204 acre;

Tract 4: Lots 7 and 8, Block 6, Cowen Addition, Midland, Louisiana, adjudicated to the State of Louisiana for the non-payment of taxes for the year 1919 in the name of W.W. Thayer, in that certain Tax Sale dated June 19, 1920 containing approximately 0.2204 acre;

Tract 5: Lot 15, Block 6, Cowen Addition, Midland, Louisiana, adjudicated to the State of Louisiana for the non-payment of taxes for the year 1920 in the name of Jesse Williams, in that certain Tax Sale dated September 3, 1921 containing approximately 0.1102 acre;

Tract 6: Lots 12 and 13, Block 1, Cowen Addition, Midland, Louisiana, adjudicated to the State of Louisiana for the non-payment of taxes for the year 1923 in the name of Mrs. J.F. Cleveland, in that certain Tax Sale dated June 21, 1924 containing approximately 0.2204 acre;

Tract 7: Lots 10, 11, 12 and 13, Block 9, Cowen Addition, Midland, Louisiana, adjudicated to the State of Louisiana for the non-payment of taxes for the year 1928 in the name of Euck Krauss, in that certain Tax Sale dated June 8, 1929 containing approximately 0.3071 acre;

Tract 8: Lots 8, 9 and 10, Block 6, Cowen Addition, Midland, Louisiana, adjudicated to the State of Louisiana for the non-payment of taxes for the year 1930 in the name of Mrs. Ira Brumfield, in that certain Tax Sale dated August 1, 1931 containing approximately 0.3306 acre;

Tract 9: Lots 14 and 15, Block 1; Lot 15, Block 4; and Lots 1 and 16, Block 6, Cowen Addition, Midland, Louisiana, adjudicated to the State of Louisiana for the non-payment of taxes for the year 1931 in the name of Antione Schewe, in that certain Tax Sale dated December 17, 1932 containing approximately 0.5188 acre;

Tract 10: Lots 5 and 6, Block 10, Cowen Addition, Midland, Louisiana, adjudicated to the State of Louisiana for the non-payment of taxes for the year 1932 in the name of Adam Coleman, in that certain Tax Sale dated November 4, 1933 containing approximately 0.2204 acre;

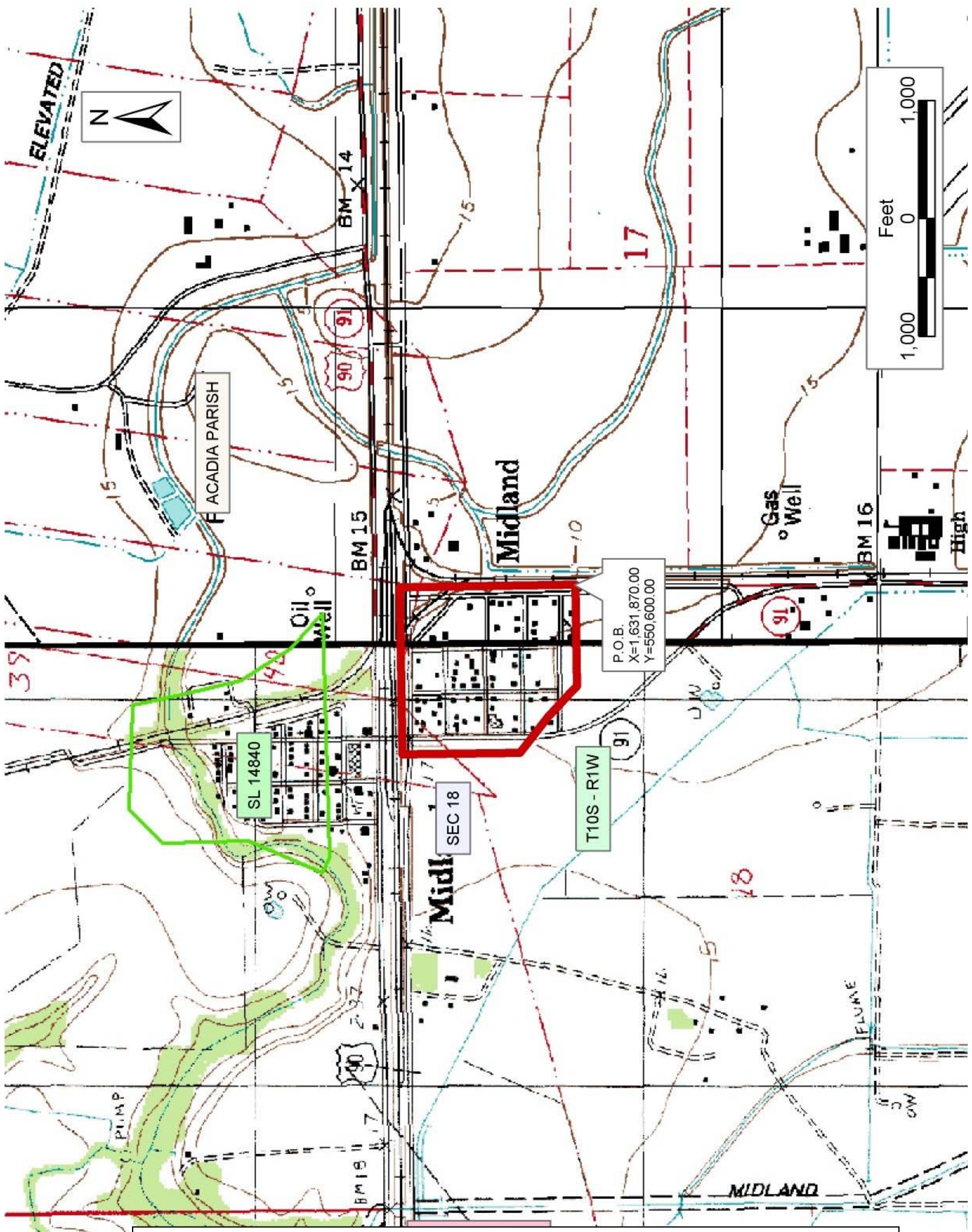
Tract 11: Lots 5 and 6, Block 6, Cowen Addition, Midland, Louisiana, adjudicated to the State of Louisiana for the non-payment of taxes for the year 1932 in the name of William Seckman, in that certain Tax Sale dated November 4, 1933 containing approximately 0.2204 acre; The above mentioned Tracts contains an aggregate of **2.8035 acres**, all as more particularly outlined on a plat on file in the Office of Mineral Resources, Department of Natural Resources. All bearings, distances and coordinates are based on Louisiana Coordinate System of 1927, (North or South Zone), where applicable.

NOTE: The above description of the Tract nominated for lease has been provided and corrected, where required, exclusively by the nomination party. Any mineral lease selected from this Tract and awarded by the Louisiana State Mineral Board shall be without warranty of any kind, either express, implied, or statutory, including, but not limited to, the implied warranties of merchantability and fitness for a particular purpose. Should the mineral lease awarded by the Louisiana State Mineral Board be subsequently modified, cancelled or abrogated due to the existence of conflicting leases, operating agreements, private claims or other future obligations or conditions which may affect all or any portion of the leased Tract, it shall not relieve the Lessee of the obligation to pay any bonus due thereon to the Louisiana State Mineral Board, nor shall the Louisiana State Mineral Board be obligated to refund any consideration paid by the Lessor prior to such modification, cancellation, or abrogation, including, but not limited to, bonuses, rentals and royalties.

NOTE: Note: No portion bid will be accepted on this tract.

Applicant: Alta Exploration

Bidder	Cash Payment	Price/Acre	Rental	Oil	Gas	Other



**TRACT 37174 - St. Bernard Parish, Louisiana**

All of the mineral rights only under land adjudicated to and acquired by the State of Louisiana in and through a proper tax sale, and subsequently alienated by the State which retained the mineral rights thereto, and which is not under valid mineral lease from the State of Louisiana on February 9, 2005, situated in St. Bernard Parish, Louisiana, and being more fully described as follows: A portion of Section 36, Township 11 South, Range 18 East; All of Section 1, Township 12 South, Range 18 East, and the West half (W/2) of Section 6, Township 12 South, Range 19 East, Southeastern Land District, owned by United Fish and Oyster Company, and adjudicated to the State for unpaid taxes of 1914, containing approximately **161.61 acres**, all as more particularly outlined on a plat on file in the Office of Mineral Resources, Department of Natural Resources. All bearings, distances and coordinates are based on Louisiana Coordinate System of 1927, (North or South Zone), where applicable.

NOTE: The above description of the Tract nominated for lease has been provided and corrected, where required, exclusively by the nomination party. Any mineral lease selected from this Tract and awarded by the Louisiana State Mineral Board shall be without warranty of any kind, either express, implied, or statutory, including, but not limited to, the implied warranties of merchantability and fitness for a particular purpose. Should the mineral lease awarded by the Louisiana State Mineral Board be subsequently modified, cancelled or abrogated due to the existence of conflicting leases, operating agreements, private claims or other future obligations or conditions which may affect all or any portion of the leased Tract, it shall not relieve the Lessee of the obligation to pay any bonus due thereon to the Louisiana State Mineral Board, nor shall the Louisiana State Mineral Board be obligated to refund any consideration paid by the Lessor prior to such modification, cancellation, or abrogation, including, but not limited to, bonuses, rentals and royalties.

NOTE: The Office of Mineral Resources will require a minimum bonus of \$230 per acre and a minimum royalty of 23%.

NOTE: The State of Louisiana does hereby reserve, and this lease shall be subject to, the imprescriptible right of surface use in the nature of a servitude in favor of the Department of Natural Resources, including its Offices and Commissions, for the sole purpose of implementing, constructing, servicing and maintaining approved coastal zone management and/or restoration projects. Utilization of any and all rights derived under this lease by the mineral lessee, its agents, successors or assigns, shall not interfere with nor hinder the reasonable surface use by the Department of Natural Resources, its Offices or Commissions, as herein above reserved.

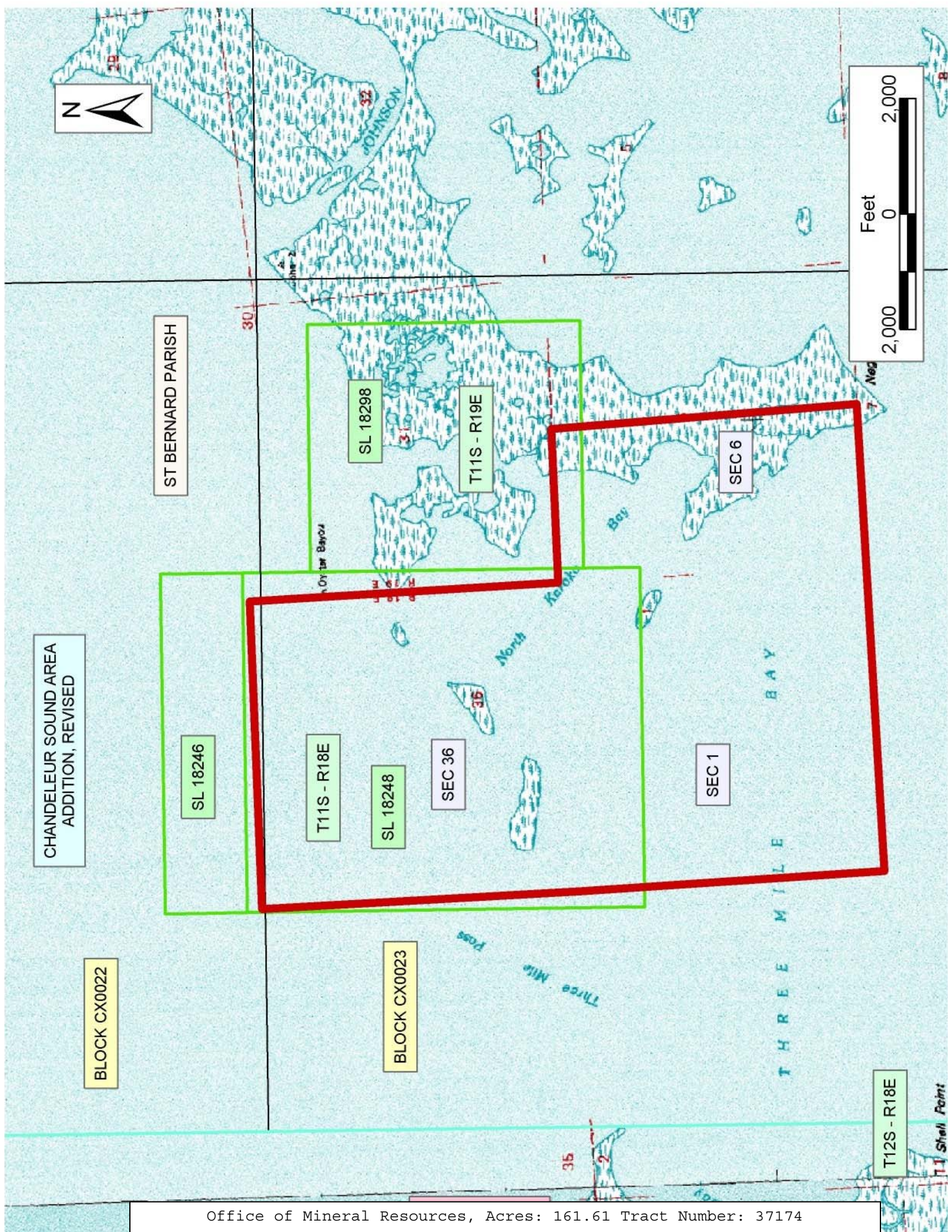
NOTE: The Department of Wildlife and Fisheries has designated certain areas in the coastal waters of the State of Louisiana as Oyster Seed Bed Areas. The exact location of those Seed Bed Areas must be obtained from

the Department of Wildlife and Fisheries and any work done under a mineral lease from the State of Louisiana may necessarily be conducted in conformity with the rules and regulations promulgated by the said Department of Wildlife and Fisheries for Oyster Seed Bed Areas.

Applicant: Kare-Sue Energy, Inc.

Bidder	Cash Payment	Price/Acre	Rental	Oil	Gas	Other





CHANDELEUR SOUND AREA  
ADDITION, REVISED

BLOCK CX0022

ST BERNARD PARISH

SL 18246

T11S - R18E

SL 18248

SEC 36

SEC 1

SL 18298

T11S - R19E

SEC 6

BLOCK CX0023

T12S - R18E



**TRACT 37175 - St. Bernard Parish, Louisiana**

All of the mineral rights only under land adjudicated to and acquired by the State of Louisiana in and through a proper tax sale, and subsequently alienated by the State which retained the mineral rights thereto, and which is not under valid mineral lease from the State of Louisiana on February 9, 2005, situated in St. Bernard Parish, Louisiana, and being more fully described as follows: All of Section 2, Township 12 South, Range 18 East; the East half (E/2) of Section 3, Township 12 South, Range 18 East; All of Sections 10 and 11, Township 12 South, Range 18 East, Southeastern Land District, owned by Kennedy Lopez Oyster Company, and adjudicated to the State for unpaid taxes of 1914, containing approximately **350 acres**, all as more particularly outlined on a plat on file in the Office of Mineral Resources, Department of Natural Resources. All bearings, distances and coordinates are based on Louisiana Coordinate System of 1927, (North or South Zone), where applicable.

NOTE: The above description of the Tract nominated for lease has been provided and corrected, where required, exclusively by the nomination party. Any mineral lease selected from this Tract and awarded by the Louisiana State Mineral Board shall be without warranty of any kind, either express, implied, or statutory, including, but not limited to, the implied warranties of merchantability and fitness for a particular purpose. Should the mineral lease awarded by the Louisiana State Mineral Board be subsequently modified, cancelled or abrogated due to the existence of conflicting leases, operating agreements, private claims or other future obligations or conditions which may affect all or any portion of the leased Tract, it shall not relieve the Lessee of the obligation to pay any bonus due thereon to the Louisiana State Mineral Board, nor shall the Louisiana State Mineral Board be obligated to refund any consideration paid by the Lessor prior to such modification, cancellation, or abrogation, including, but not limited to, bonuses, rentals and royalties.

NOTE: The Office of Mineral Resources will require a minimum bonus of \$230 per acre and a minimum royalty of 23%.

NOTE: The State of Louisiana does hereby reserve, and this lease shall be subject to, the imprescriptible right of surface use in the nature of a servitude in favor of the Department of Natural Resources, including its Offices and Commissions, for the sole purpose of implementing, constructing, servicing and maintaining approved coastal zone management and/or restoration projects. Utilization of any and all rights derived under this lease by the mineral lessee, its agents, successors or assigns, shall not interfere with nor hinder the reasonable surface use by the Department of Natural Resources, its Offices or Commissions, as herein above reserved.

NOTE: The Department of Wildlife and Fisheries has designated certain areas in the coastal waters of the State of Louisiana as Oyster Seed Bed Areas. The exact location of those Seed Bed Areas must be obtained from

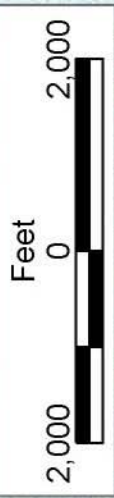


the Department of Wildlife and Fisheries and any work done under a mineral lease from the State of Louisiana may necessarily be conducted in conformity with the rules and regulations promulgated by the said Department of Wildlife and Fisheries for Oyster Seed Bed Areas.

Applicant: Kare-Sue Energy, Inc.

Bidder	Cash Payment	Price/Acre	Rental	Oil	Gas	Other





SL 18248

CHANDELEUR SOUND AREA  
ADDITION, REVISED

BLOCK CX0023

BLOCK CX0046

SEC 2

SEC 11

T11S - R18E

SEC 3

T12S - R18E

SEC 10

SL 18249

SL 18253

ST BERNARD PARISH

10

33

SL 18252

SL 18257

SEC 9



**TRACT 37176 - St. Bernard Parish, Louisiana**

All of the mineral rights only under land adjudicated to and acquired by the State of Louisiana in and through a proper tax sale, and subsequently alienated by the State which retained the mineral rights thereto, and which is not under valid mineral lease from the State of Louisiana on February 9, 2005, situated in St. Bernard Parish, Louisiana, and being more fully described as follows: The West half (W/2) of Section 5, Township 12 South, Range 18 East, Southeastern Land District, owned by Unknown, and adjudicated to the State for unpaid taxes of 1932, containing approximately **48 acres**, all as more particularly outlined on a plat on file in the Office of Mineral Resources, Department of Natural Resources. All bearings, distances and coordinates are based on Louisiana Coordinate System of 1927, (North or South Zone), where applicable.

NOTE: The above description of the Tract nominated for lease has been provided and corrected, where required, exclusively by the nomination party. Any mineral lease selected from this Tract and awarded by the Louisiana State Mineral Board shall be without warranty of any kind, either express, implied, or statutory, including, but not limited to, the implied warranties of merchantability and fitness for a particular purpose. Should the mineral lease awarded by the Louisiana State Mineral Board be subsequently modified, cancelled or abrogated due to the existence of conflicting leases, operating agreements, private claims or other future obligations or conditions which may affect all or any portion of the leased Tract, it shall not relieve the Lessee of the obligation to pay any bonus due thereon to the Louisiana State Mineral Board, nor shall the Louisiana State Mineral Board be obligated to refund any consideration paid by the Lessor prior to such modification, cancellation, or abrogation, including, but not limited to, bonuses, rentals and royalties.

NOTE: The Office of Mineral Resources will require a minimum bonus of \$230 per acre and a minimum royalty of 23%.

NOTE: The State of Louisiana does hereby reserve, and this lease shall be subject to, the imprescriptible right of surface use in the nature of a servitude in favor of the Department of Natural Resources, including its Offices and Commissions, for the sole purpose of implementing, constructing, servicing and maintaining approved coastal zone management and/or restoration projects. Utilization of any and all rights derived under this lease by the mineral lessee, its agents, successors or assigns, shall not interfere with nor hinder the reasonable surface use by the Department of Natural Resources, its Offices or Commissions, as herein above reserved.

NOTE: The Department of Wildlife and Fisheries has designated certain areas in the coastal waters of the State of Louisiana as Oyster Seed Bed Areas. The exact location of those Seed Bed Areas must be obtained from the Department of Wildlife and Fisheries and any work done under a mineral lease from the State of Louisiana may necessarily be conducted in



conformity with the rules and regulations promulgated by the said Department of Wildlife and Fisheries for Oyster Seed Bed Areas.

Applicant: Kare-Sue Energy, Inc.

Bidder	Cash Payment	Price/Acre	Rental	Oil	Gas	Other





ST BERNARD PARISH

T11S - R18E

BLIND BAY

SL 18251

SL 18256

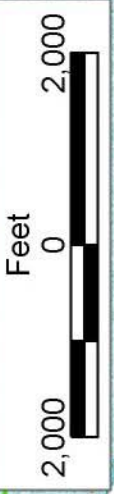
SEC 5

T12S - R18E

SL 18252

SL 18257

KENNEDYS LAGOON





**TRACT 37177 - St. Bernard Parish, Louisiana**

All of the mineral rights only under land adjudicated to and acquired by the State of Louisiana in and through a proper tax sale, and subsequently alienated by the State which retained the mineral rights thereto, and which is not under valid mineral lease from the State of Louisiana on February 9, 2005, situated in St. Bernard Parish, Louisiana, and being more fully described as follows: All of Section 19, Township 12 South, Range 18 East, Southeastern Land District, owned by Unknown, and adjudicated to the State for unpaid taxes of 1932, containing approximately **31 acres**, all as more particularly outlined on a plat on file in the Office of Mineral Resources, Department of Natural Resources. All bearings, distances and coordinates are based on Louisiana Coordinate System of 1927, (North or South Zone), where applicable.

NOTE: The above description of the Tract nominated for lease has been provided and corrected, where required, exclusively by the nomination party. Any mineral lease selected from this Tract and awarded by the Louisiana State Mineral Board shall be without warranty of any kind, either express, implied, or statutory, including, but not limited to, the implied warranties of merchantability and fitness for a particular purpose. Should the mineral lease awarded by the Louisiana State Mineral Board be subsequently modified, cancelled or abrogated due to the existence of conflicting leases, operating agreements, private claims or other future obligations or conditions which may affect all or any portion of the leased Tract, it shall not relieve the Lessee of the obligation to pay any bonus due thereon to the Louisiana State Mineral Board, nor shall the Louisiana State Mineral Board be obligated to refund any consideration paid by the Lessor prior to such modification, cancellation, or abrogation, including, but not limited to, bonuses, rentals and royalties.

NOTE: The Office of Mineral Resources will require a minimum bonus of \$230 per acre and a minimum royalty of 23%.

NOTE: The State of Louisiana does hereby reserve, and this lease shall be subject to, the imprescriptible right of surface use in the nature of a servitude in favor of the Department of Natural Resources, including its Offices and Commissions, for the sole purpose of implementing, constructing, servicing and maintaining approved coastal zone management and/or restoration projects. Utilization of any and all rights derived under this lease by the mineral lessee, its agents, successors or assigns, shall not interfere with nor hinder the reasonable surface use by the Department of Natural Resources, its Offices or Commissions, as herein above reserved.

NOTE: The Department of Wildlife and Fisheries has designated certain areas in the coastal waters of the State of Louisiana as Oyster Seed Bed Areas. The exact location of those Seed Bed Areas must be obtained from the Department of Wildlife and Fisheries and any work done under a mineral lease from the State of Louisiana may necessarily be conducted in

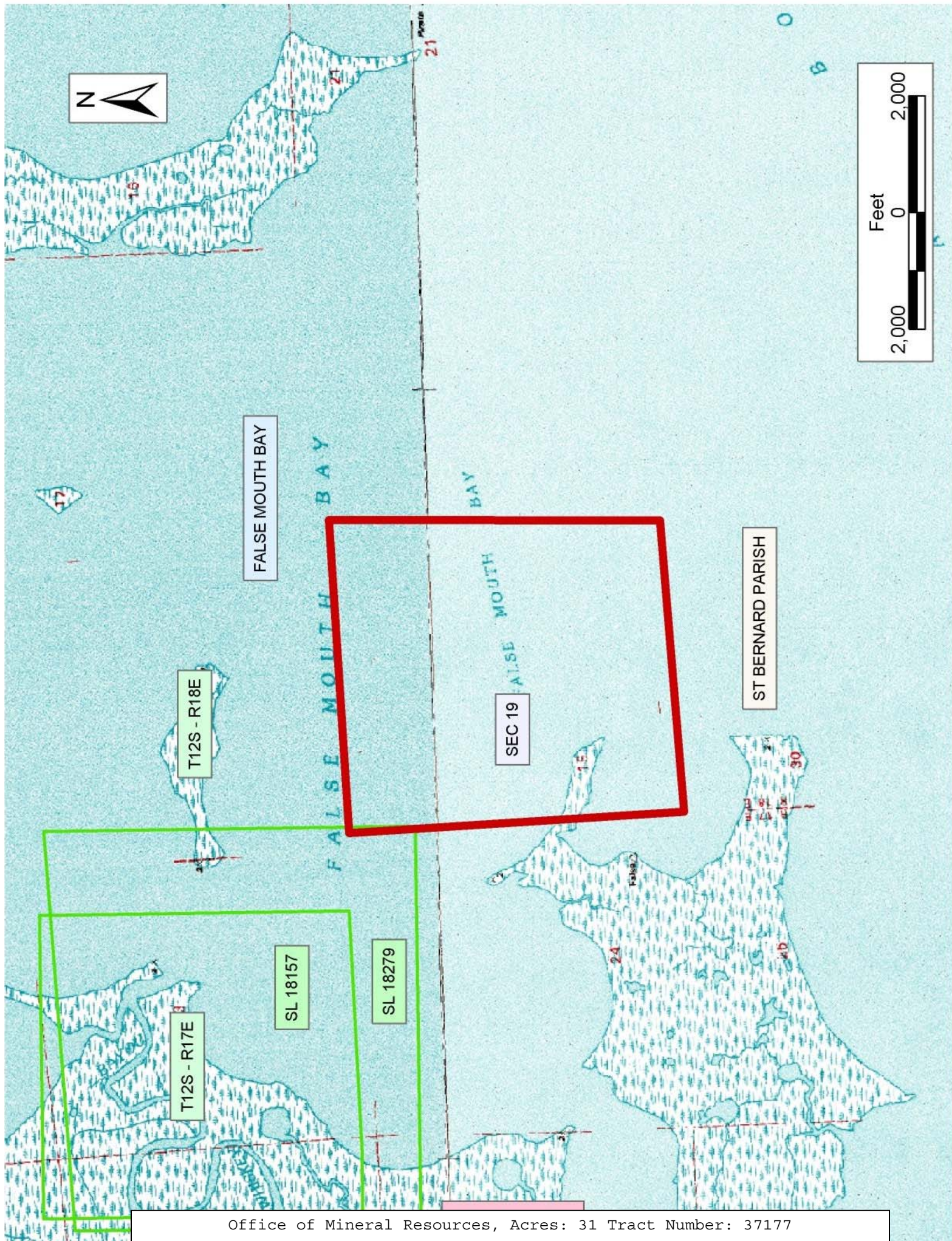


conformity with the rules and regulations promulgated by the said Department of Wildlife and Fisheries for Oyster Seed Bed Areas.

Applicant: Kare-Sue Energy, Inc.

Bidder	Cash Payment	Price/Acre	Rental	Oil	Gas	Other







**TRACT 37178 - St. Bernard Parish, Louisiana**

All of the mineral rights only under land adjudicated to and acquired by the State of Louisiana in and through a proper tax sale, and subsequently alienated by the State which retained the mineral rights thereto, and which is not under valid mineral lease from the State of Louisiana on February 9, 2005, situated in St. Bernard Parish, Louisiana, and being more fully described as follows: All of Section 29, Township 12 South, Range 18 East, Southeastern Land District, owned by Unknown, and adjudicated to the State for unpaid taxes of 1932, containing approximately **8 acres**, all as more particularly outlined on a plat on file in the Office of Mineral Resources, Department of Natural Resources. All bearings, distances and coordinates are based on Louisiana Coordinate System of 1927, (North or South Zone), where applicable.

NOTE: The above description of the Tract nominated for lease has been provided and corrected, where required, exclusively by the nomination party. Any mineral lease selected from this Tract and awarded by the Louisiana State Mineral Board shall be without warranty of any kind, either express, implied, or statutory, including, but not limited to, the implied warranties of merchantability and fitness for a particular purpose. Should the mineral lease awarded by the Louisiana State Mineral Board be subsequently modified, cancelled or abrogated due to the existence of conflicting leases, operating agreements, private claims or other future obligations or conditions which may affect all or any portion of the leased Tract, it shall not relieve the Lessee of the obligation to pay any bonus due thereon to the Louisiana State Mineral Board, nor shall the Louisiana State Mineral Board be obligated to refund any consideration paid by the Lessor prior to such modification, cancellation, or abrogation, including, but not limited to, bonuses, rentals and royalties.

NOTE: The Office of Mineral Resources will require a minimum bonus of \$230 per acre and a minimum royalty of 23%.

NOTE: The State of Louisiana does hereby reserve, and this lease shall be subject to, the imprescriptible right of surface use in the nature of a servitude in favor of the Department of Natural Resources, including its Offices and Commissions, for the sole purpose of implementing, constructing, servicing and maintaining approved coastal zone management and/or restoration projects. Utilization of any and all rights derived under this lease by the mineral lessee, its agents, successors or assigns, shall not interfere with nor hinder the reasonable surface use by the Department of Natural Resources, its Offices or Commissions, as herein above reserved.

NOTE: The Department of Wildlife and Fisheries has designated certain areas in the coastal waters of the State of Louisiana as Oyster Seed Bed Areas. The exact location of those Seed Bed Areas must be obtained from the Department of Wildlife and Fisheries and any work done under a mineral lease from the State of Louisiana may necessarily be conducted in



conformity with the rules and regulations promulgated by the said Department of Wildlife and Fisheries for Oyster Seed Bed Areas.

Applicant: Kare-Sue Energy, Inc.

Bidder	Cash Payment	Price/Acre	Rental	Oil	Gas	Other



21  
Morgan Point

ST BERNARD PARISH

FALSE MOUTH BAY

FALSE MOUTH BAY

SEC 29

BAY BOUDREAU

T12S - R18E

SL 17954

