

TRACT 37134 - Terrebonne Parish, Louisiana

All of the lands now or formerly constituting the beds and bottoms of all water bodies of every nature and description the title of which vests in the State of Louisiana, together with all islands arising therein and other lands formed by accretion or by reliction, where allowed by law, excepting tax adjudicated lands, and not presently under mineral lease on February 9, 2005, situated in Terrebonne Parish, Louisiana, and more particularly described as follows: Beginning at a point having Coordinates of X = 2,114,154.00 and Y = 226,040.00; thence North 3,460.00 feet to a point having Coordinates of X = 2,114,154.00 and Y = 229,500.00; thence East 766.00 feet to a point having Coordinates of X = 2,114,920.00 and Y = 229,500.00; thence North 2,290.00 feet to a point having Coordinates of X = 2,114,920.00 and Y = 231,790.00; thence East 9,654.00 feet to a point having Coordinates of X = 2,124,574.00 and Y = 231,790.00; thence South 5,750.00 feet to a point having Coordinates of X = 2,124,574.00 and Y = 226,040.00; thence West 10,420.00 feet to the point of beginning, containing approximately **1,287 acres**, all as more particularly outlined on a plat on file in the Office of Mineral Resources, Department of Natural Resources. All bearings, distances and coordinates are based on Louisiana Coordinate System of 1927, (North or South Zone), where applicable.

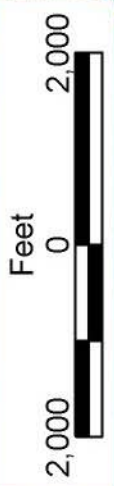
NOTE: The above description of the Tract nominated for lease has been provided and corrected, where required, exclusively by the nomination party. Any mineral lease selected from this Tract and awarded by the Louisiana State Mineral Board shall be without warranty of any kind, either express, implied, or statutory, including, but not limited to, the implied warranties of merchantability and fitness for a particular purpose. Should the mineral lease awarded by the Louisiana State Mineral Board be subsequently modified, cancelled or abrogated due to the existence of conflicting leases, operating agreements, private claims or other future obligations or conditions which may affect all or any portion of the leased Tract, it shall not relieve the Lessee of the obligation to pay any bonus due thereon to the Louisiana State Mineral Board, nor shall the Louisiana State Mineral Board be obligated to refund any consideration paid by the Lessor prior to such modification, cancellation, or abrogation, including, but not limited to, bonuses, rentals and royalties.

NOTE: The State of Louisiana does hereby reserve, and this lease shall be subject to, the imprescriptible right of surface use in the nature of a servitude in favor of the Department of Natural Resources, including its Offices and Commissions, for the sole purpose of implementing, constructing, servicing and maintaining approved coastal zone management and/or restoration projects. Utilization of any and all rights derived under this lease by the mineral lessee, its agents, successors or assigns, shall not interfere with nor hinder the reasonable surface use by the Department of Natural Resources, its Offices or Commissions, as herein above reserved.

NOTE: The Department of Wildlife and Fisheries has designated certain areas in the coastal waters of the State of Louisiana as Oyster Seed Bed Areas. The exact location of those Seed Bed Areas must be obtained from the Department of Wildlife and Fisheries and any work done under a mineral lease from the State of Louisiana may necessarily be conducted in conformity with the rules and regulations promulgated by the said Department of Wildlife and Fisheries for Oyster Seed Bed Areas.

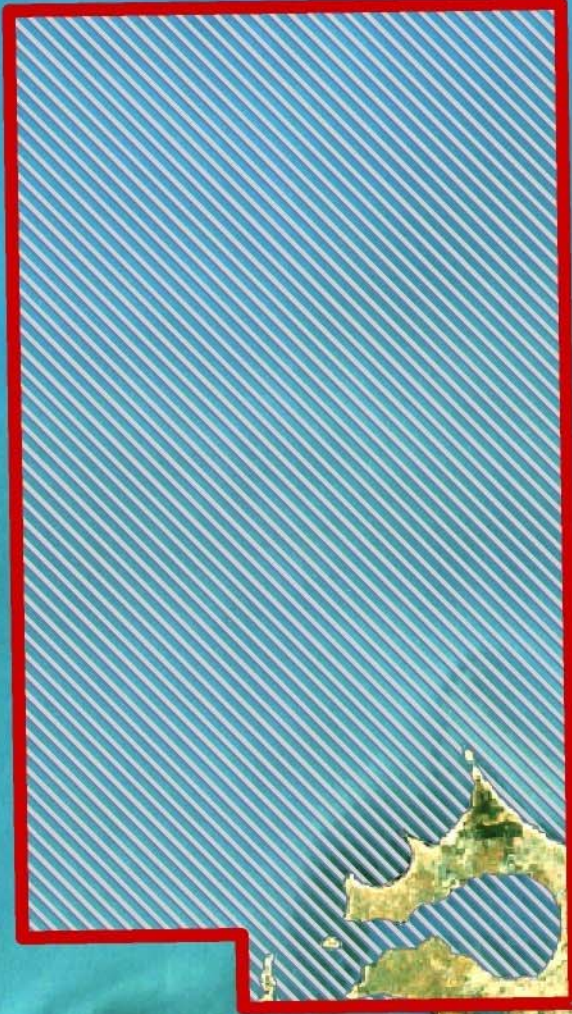
Applicant: Land Resources, Inc.

Bidder	Cash Payment	Price/Acre	Rental	Oil	Gas	Other



TERREBONNE PARISH

LAKE MECHANT



T21S - R15E

P.O.B.
X=2,114,154.00
Y=226,040.00

TRACT 37135 - Terrebonne Parish, Louisiana

All of the lands now or formerly constituting the beds and bottoms of all water bodies of every nature and description the title of which vests in the State of Louisiana, together with all islands arising therein and other lands formed by accretion or by reliction, where allowed by law, excepting tax adjudicated lands, and not presently under mineral lease on February 9, 2005, situated in Terrebonne Parish, Louisiana, and more particularly described as follows: Beginning at a point having Coordinates of X = 2,037,300.00 and Y = 228,560.00; thence East 18,480.00 feet to a point having Coordinates of X = 2,055,780.00 and Y = 228,560.00; thence South 10,560.00 feet to a point having Coordinates of X = 2,055,780.00 and Y = 218,000.00; thence West 18,480.00 feet to a point having Coordinates of X = 2,037,300.00 and Y = 218,000.00; thence North 10,560.00 feet to the point of beginning, containing approximately **2,184 acres**, all as more particularly outlined on a plat on file in the Office of Mineral Resources, Department of Natural Resources. All bearings, distances and coordinates are based on Louisiana Coordinate System of 1927, (North or South Zone), where applicable.

NOTE: The above description of the Tract nominated for lease has been provided and corrected, where required, exclusively by the nomination party. Any mineral lease selected from this Tract and awarded by the Louisiana State Mineral Board shall be without warranty of any kind, either express, implied, or statutory, including, but not limited to, the implied warranties of merchantability and fitness for a particular purpose. Should the mineral lease awarded by the Louisiana State Mineral Board be subsequently modified, cancelled or abrogated due to the existence of conflicting leases, operating agreements, private claims or other future obligations or conditions which may affect all or any portion of the leased Tract, it shall not relieve the Lessee of the obligation to pay any bonus due thereon to the Louisiana State Mineral Board, nor shall the Louisiana State Mineral Board be obligated to refund any consideration paid by the Lessor prior to such modification, cancellation, or abrogation, including, but not limited to, bonuses, rentals and royalties.

NOTE: The State of Louisiana does hereby reserve, and this lease shall be subject to, the imprescriptible right of surface use in the nature of a servitude in favor of the Department of Natural Resources, including its Offices and Commissions, for the sole purpose of implementing, constructing, servicing and maintaining approved coastal zone management and/or restoration projects. Utilization of any and all rights derived under this lease by the mineral lessee, its agents, successors or assigns, shall not interfere with nor hinder the reasonable surface use by the Department of Natural Resources, its Offices or Commissions, as herein above reserved.

NOTE: The Department of Wildlife and Fisheries has designated certain areas in the coastal waters of the State of Louisiana as Oyster Seed Bed Areas. The exact location of those Seed Bed Areas must be obtained from

the Department of Wildlife and Fisheries and any work done under a mineral lease from the State of Louisiana may necessarily be conducted in conformity with the rules and regulations promulgated by the said Department of Wildlife and Fisheries for Oyster Seed Bed Areas.

Applicant: Fleetwood Resources, Inc.

Bidder	Cash Payment	Price/Acre	Rental	Oil	Gas	Other



FOUR LEAUGE BAY

MOSQUITO BAYOU

MOSQUITO BAYOU

MOSQUITO BAY

MOSQUITO PASS

T20S - R13E

T21S - R12E

T20S - R12E

TERREBONNE PARISH

P.O.B.
X=2,037,300.00
Y=228,560.00



TRACT 37136 - Terrebonne Parish, Louisiana

All of the lands now or formerly constituting the beds and bottoms of all water bodies of every nature and description the title of which vests in the State of Louisiana, together with all islands arising therein and other lands formed by accretion or by reliction, where allowed by law, excepting tax adjudicated lands, and not presently under mineral lease on February 9, 2005, situated in Terrebonne Parish, Louisiana, and more particularly described as follows: Beginning at a point having Coordinates of X = 2,037,300.00 and Y = 228,560.00; thence South 10,560.00 feet to a point having Coordinates of X = 2,037,300.00 and Y = 218,000.00; thence West 18,480.00 feet to a point having Coordinates of X = 2,018,820.00 and Y = 218,000.00; thence North 10,560.00 feet to a point having Coordinates of X = 2,018,820.00 and Y = 228,560.00; thence East 18,480.00 feet to the point of beginning, containing approximately **293 acres**, all as more particularly outlined on a plat on file in the Office of Mineral Resources, Department of Natural Resources. All bearings, distances and coordinates are based on Louisiana Coordinate System of 1927, (North or South Zone), where applicable.

NOTE: The above description of the Tract nominated for lease has been provided and corrected, where required, exclusively by the nomination party. Any mineral lease selected from this Tract and awarded by the Louisiana State Mineral Board shall be without warranty of any kind, either express, implied, or statutory, including, but not limited to, the implied warranties of merchantability and fitness for a particular purpose. Should the mineral lease awarded by the Louisiana State Mineral Board be subsequently modified, cancelled or abrogated due to the existence of conflicting leases, operating agreements, private claims or other future obligations or conditions which may affect all or any portion of the leased Tract, it shall not relieve the Lessee of the obligation to pay any bonus due thereon to the Louisiana State Mineral Board, nor shall the Louisiana State Mineral Board be obligated to refund any consideration paid by the Lessor prior to such modification, cancellation, or abrogation, including, but not limited to, bonuses, rentals and royalties.

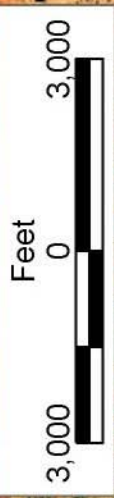
NOTE: The State of Louisiana does hereby reserve, and this lease shall be subject to, the imprescriptible right of surface use in the nature of a servitude in favor of the Department of Natural Resources, including its Offices and Commissions, for the sole purpose of implementing, constructing, servicing and maintaining approved coastal zone management and/or restoration projects. Utilization of any and all rights derived under this lease by the mineral lessee, its agents, successors or assigns, shall not interfere with nor hinder the reasonable surface use by the Department of Natural Resources, its Offices or Commissions, as herein above reserved.

NOTE: The Department of Wildlife and Fisheries has designated certain areas in the coastal waters of the State of Louisiana as Oyster Seed Bed Areas. The exact location of those Seed Bed Areas must be obtained from

the Department of Wildlife and Fisheries and any work done under a mineral lease from the State of Louisiana may necessarily be conducted in conformity with the rules and regulations promulgated by the said Department of Wildlife and Fisheries for Oyster Seed Bed Areas.

Applicant: Fleetwood Resources, Inc.

Bidder	Cash Payment	Price/Acre	Rental	Oil	Gas	Other



LITTLE MOSQUITO BAYOU

P.O.B.
X=2,037,300.00
Y=228,560.00

T20S - R12E

TERREBONNE PARISH

LAKE CHAPEAU

T21S - R12E

BURKES BAYOU

T20S - R11E

SL 649

LOCUST BAYOU

T21S - R11E

TRACT 37137 - Portion of Blocks 80, 81, and 82, Main Pass Area, Revised, Plaquemines Parish, Louisiana

All of the lands now or formerly constituting the beds and bottoms of all water bodies of every nature and description the title of which vests in the State of Louisiana, together with all islands arising therein and other lands formed by accretion or by reliction, where allowed by law, excepting tax adjudicated lands, and not presently under mineral lease on February 9, 2005, situated in Plaquemines Parish, Louisiana, and more particularly described as follows: Beginning at a point within Block 81, Main Pass Area, Revised, also being a point on the Southern boundary of State Lease No. 1357, as amended, having Coordinates of X = 2,719,640.00 and Y = 212,580.00; thence along the boundaries of said State Lease No. 1357 and State Lease No. 1355, as amended, the following: South 79 degrees 47 minutes 40 seconds East 7,224.30 feet and North 77 degrees 14 minutes 33 seconds East 3,495.41 feet to the Southeast corner of said State Lease No. 1355, said point located within Block 80 having Coordinates of X = 2,730,159.12 and Y = 212,071.87; thence South 32 degrees 38 minutes 35 seconds East 334.81 feet to a point on the North and West boundaries of Pass A Loutre Wildlife Management Area having Coordinates of X = 2,730,339.72 and Y = 211,789.94; thence Southwesterly along an arc having a Radius of 19,550.00 feet and centered at X = 2,731,935.94 and Y = 192,305.22 to a point having Coordinates of X = 2,717,128.07 and Y = 205,069.60; thence South 12 degrees 41 minutes 24 seconds East 2,972.05 feet; thence South 02 degrees 28 minutes 20 seconds East 3,054.14 feet; thence South 88 degrees 44 minutes 11 seconds West 6,054.45 feet to a point within Block 82, having Coordinates of X = 2,711,859.72 and Y = 198,985.33; thence North 9,114.67 feet to a point having Coordinates of X = 2,711,859.72 and Y = 208,100.00; thence East 430.28 feet to the Southwest corner of said State Lease No. 1357; thence North 58 degrees 38 minutes 12 seconds East 8,607.72 feet to the point of beginning, **LESS AND EXCEPT** those portions, if any, of State Lease No. 1355 and State Lease No. 1357, that may lie within the above described tract, containing approximately **2,035 acres**, all as more particularly outlined on a plat on file in the Office of Mineral Resources, Department of Natural Resources. All bearings, distances and coordinates are based on Louisiana Coordinate System of 1927, (North or South Zone), where applicable.

NOTE: The above description of the Tract nominated for lease has been provided and corrected, where required, exclusively by the nomination party. Any mineral lease selected from this Tract and awarded by the Louisiana State Mineral Board shall be without warranty of any kind, either express, implied, or statutory, including, but not limited to, the implied warranties of merchantability and fitness for a particular purpose. Should the mineral lease awarded by the Louisiana State Mineral Board be subsequently modified, cancelled or abrogated due to the existence of conflicting leases, operating agreements, private claims or other future obligations or conditions which may affect all or any portion of the leased Tract, it shall not relieve the Lessee of the obligation to pay any bonus due thereon to the Louisiana State Mineral Board, nor shall

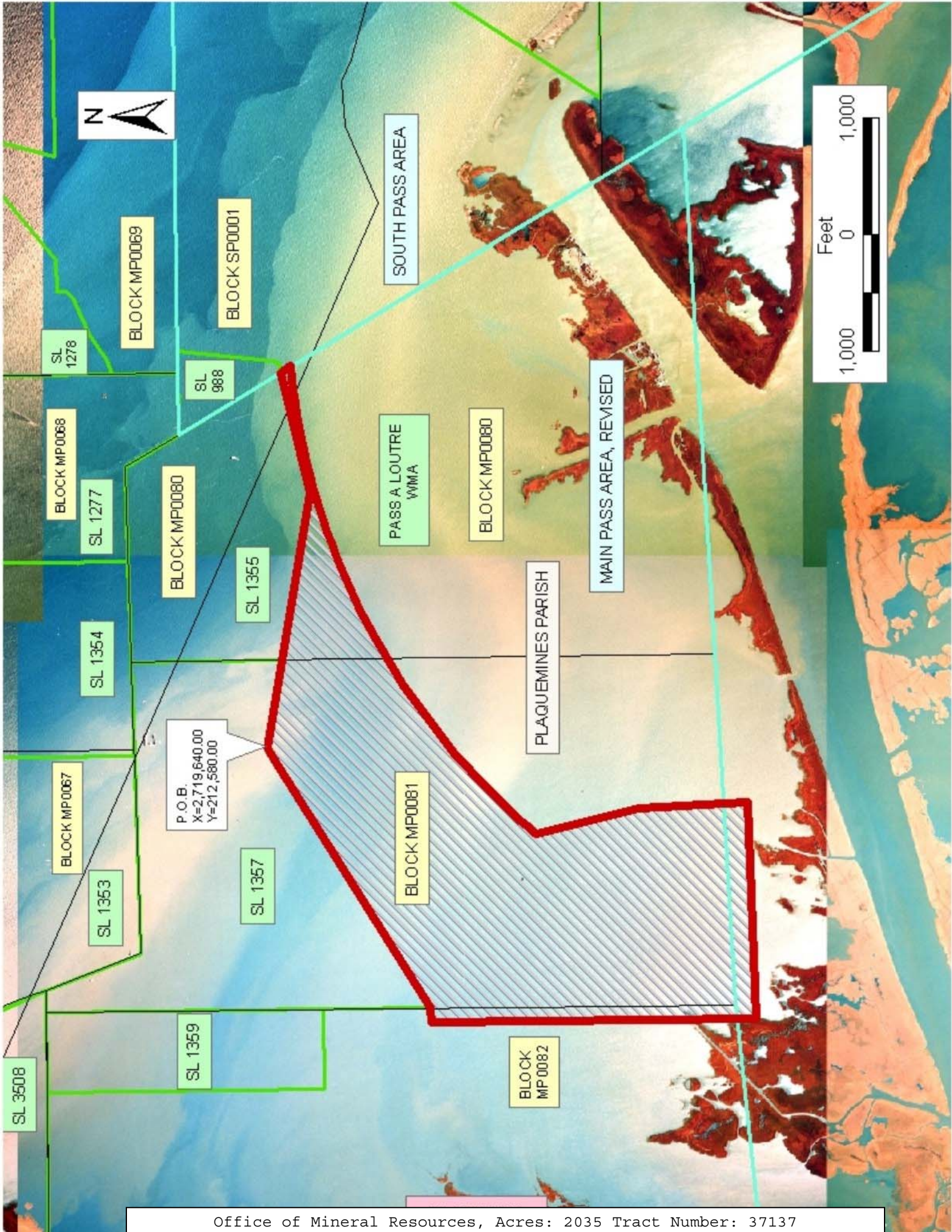
the Louisiana State Mineral Board be obligated to refund any consideration paid by the Lessor prior to such modification, cancellation, or abrogation, including, but not limited to, bonuses, rentals and royalties.

NOTE: The State of Louisiana does hereby reserve, and this lease shall be subject to, the imprescriptible right of surface use in the nature of a servitude in favor of the Department of Natural Resources, including its Offices and Commissions, for the sole purpose of implementing, constructing, servicing and maintaining approved coastal zone management and/or restoration projects. Utilization of any and all rights derived under this lease by the mineral lessee, its agents, successors or assigns, shall not interfere with nor hinder the reasonable surface use by the Department of Natural Resources, its Offices or Commissions, as herein above reserved.

NOTE: The Department of Wildlife and Fisheries has designated certain areas in the coastal waters of the State of Louisiana as Oyster Seed Bed Areas. The exact location of those Seed Bed Areas must be obtained from the Department of Wildlife and Fisheries and any work done under a mineral lease from the State of Louisiana may necessarily be conducted in conformity with the rules and regulations promulgated by the said Department of Wildlife and Fisheries for Oyster Seed Bed Areas.

Applicant: Leslie M. Cooper

Bidder	Cash Payment	Price/Acre	Rental	Oil	Gas	Other



P.O.B.
X=2,719,640.00
Y=212,580.00

TRACT 37138 - Portion of Block 41, Ship Shoal Area, Terrebonne Parish, Louisiana

All of the lands now or formerly constituting the beds and bottoms of all water bodies of every nature and description the title of which vests in the State of Louisiana, together with all islands arising therein and other lands formed by accretion or by reliction, where allowed by law, excepting tax adjudicated lands, and not presently under mineral lease on February 9, 2005, situated in Terrebonne Parish, Louisiana, and more particularly described as follows: Beginning at a point having Coordinates of X = 2,153,591.40 and Y = 150,931.62; thence West 2,955.55 feet to the Westernmost Southeast corner of State Lease No. 3403, as amended having Coordinates of X = 2,150,635.85 and Y = 150,931.62; thence along the boundary of said State Lease No. 3403 the following courses: North 00 degrees 14 minutes 29 seconds West 2,500.00 feet, North 89 degrees 45 minutes 31 seconds East 2,300.00 feet, and North 00 degrees 14 minutes 29 seconds West 105.67 feet to the Southwest corner of State Lease No. 16244, as amended having Coordinates of X = 2,152,924.85 and Y = 153,546.96; thence East 666.55 feet on the South line of said State Lease No. 16244 to its Southeast corner having Coordinates of X = 2,153,591.40 and Y = 153,546.96; thence South 2,615.34 feet to the point of beginning, containing approximately **168 acres**, all as more particularly outlined on a plat on file in the Office of Mineral Resources, Department of Natural Resources. All bearings, distances and coordinates are based on Louisiana Coordinate System of 1927, (North or South Zone), where applicable.

NOTE: The above description of the Tract nominated for lease has been provided and corrected, where required, exclusively by the nomination party. Any mineral lease selected from this Tract and awarded by the Louisiana State Mineral Board shall be without warranty of any kind, either express, implied, or statutory, including, but not limited to, the implied warranties of merchantability and fitness for a particular purpose. Should the mineral lease awarded by the Louisiana State Mineral Board be subsequently modified, cancelled or abrogated due to the existence of conflicting leases, operating agreements, private claims or other future obligations or conditions which may affect all or any portion of the leased Tract, it shall not relieve the Lessee of the obligation to pay any bonus due thereon to the Louisiana State Mineral Board, nor shall the Louisiana State Mineral Board be obligated to refund any consideration paid by the Lessor prior to such modification, cancellation, or abrogation, including, but not limited to, bonuses, rentals and royalties.

NOTE: The State of Louisiana does hereby reserve, and this lease shall be subject to, the imprescriptible right of surface use in the nature of a servitude in favor of the Department of Natural Resources, including its Offices and Commissions, for the sole purpose of implementing, constructing, servicing and maintaining approved coastal zone management and/or restoration projects. Utilization of any and all rights derived under this lease by the mineral lessee, its agents, successors or assigns,

shall not interfere with nor hinder the reasonable surface use by the Department of Natural Resources, its Offices or Commissions, as herein above reserved.

NOTE: The Department of Wildlife and Fisheries has designated certain areas in the coastal waters of the State of Louisiana as Oyster Seed Bed Areas. The exact location of those Seed Bed Areas must be obtained from the Department of Wildlife and Fisheries and any work done under a mineral lease from the State of Louisiana may necessarily be conducted in conformity with the rules and regulations promulgated by the said Department of Wildlife and Fisheries for Oyster Seed Bed Areas.

Applicant: The Louisiana Land And Exploration Company

Bidder	Cash Payment	Price/Acre	Rental	Oil	Gas	Other

