

**TRACT 37124 - Portion of Block 48, Breton Sound Area, Plaquemines Parish, Louisiana**

All of the lands now or formerly constituting the beds and bottoms of all water bodies of every nature and description the title of which vests in the State of Louisiana, together with all islands arising therein and other lands formed by accretion or by reliction, where allowed by law, excepting tax adjudicated lands, and not presently under mineral lease on February 9, 2005, situated in Plaquemines Parish, Louisiana, and more particularly described as follows: Beginning at a point on the North line of Block 48, Breton Sound Area, having Coordinates of X = 2,642,725.00 and Y = 307,580.00; thence East 5,485.00 feet along the North line of said Block 48 to a point, also being the Northwest corner of State Lease No. 18080 having Coordinates of X = 2,648,210.00 and Y = 307,580.00; thence along the boundary of said State Lease No. 18080 the following courses: South 1,780.00 feet and East 1,890.00 feet to the Southeast corner of said State Lease No. 18080, also being a point on the East line of said Block 48 having Coordinates of X = 2,650,100.00 and Y = 305,800.00; thence South 12,970.00 feet along the East line of said Block 48 to its Southeast corner having Coordinates of X = 2,650,100.00 and Y = 292,830.00; thence West 7,375.00 feet along the South line of said Block 48 to a point having Coordinates of X = 2,642,725.00 and Y = 292,830.00; thence North 14,750.00 feet to the point of beginning, containing approximately **2,420.04 acres**, all as more particularly outlined on a plat on file in the Office of Mineral Resources, Department of Natural Resources. All bearings, distances and coordinates are based on Louisiana Coordinate System of 1927, (North or South Zone), where applicable.

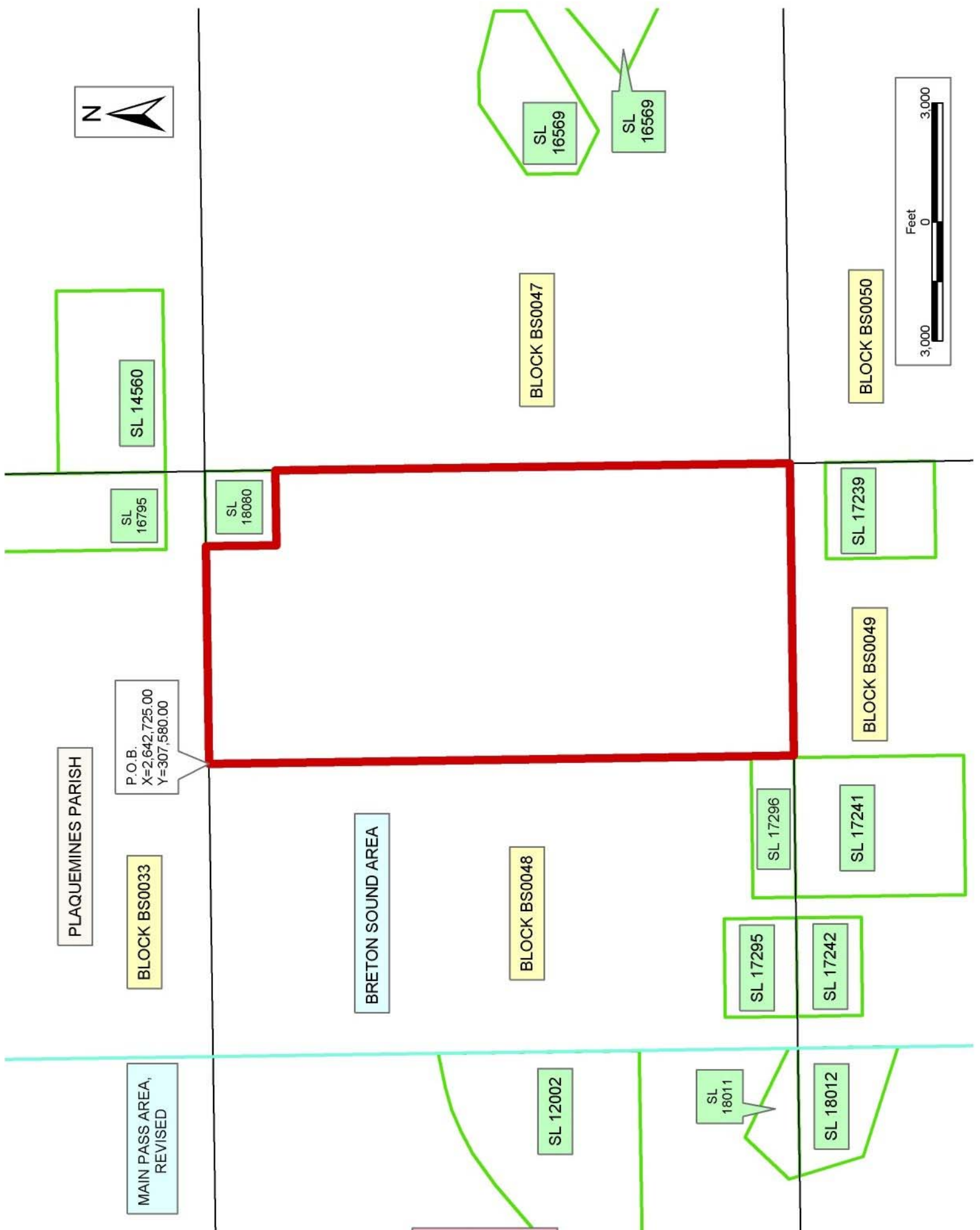
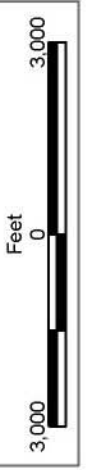
NOTE: The above description of the Tract nominated for lease has been provided and corrected, where required, exclusively by the nomination party. Any mineral lease selected from this Tract and awarded by the Louisiana State Mineral Board shall be without warranty of any kind, either express, implied, or statutory, including, but not limited to, the implied warranties of merchantability and fitness for a particular purpose. Should the mineral lease awarded by the Louisiana State Mineral Board be subsequently modified, cancelled or abrogated due to the existence of conflicting leases, operating agreements, private claims or other future obligations or conditions which may affect all or any portion of the leased Tract, it shall not relieve the Lessee of the obligation to pay any bonus due thereon to the Louisiana State Mineral Board, nor shall the Louisiana State Mineral Board be obligated to refund any consideration paid by the Lessor prior to such modification, cancellation, or abrogation, including, but not limited to, bonuses, rentals and royalties.

NOTE: The State of Louisiana does hereby reserve, and this lease shall be subject to, the imprescriptible right of surface use in the nature of a servitude in favor of the Department of Natural Resources, including its Offices and Commissions, for the sole purpose of implementing, constructing, servicing and maintaining approved coastal zone management and/or restoration projects. Utilization of any and all rights derived

under this lease by the mineral lessee, its agents, successors or assigns, shall not interfere with nor hinder the reasonable surface use by the Department of Natural Resources, its Offices or Commissions, as herein above reserved.

Applicant: A.D. Ventures

Bidder	Cash Payment	Price/Acre	Rental	Oil	Gas	Other



**TRACT 37125 - Portion of Block 31, Main Pass Area, Revised, Plaquemines Parish, Louisiana**

All of the lands now or formerly constituting the beds and bottoms of all water bodies of every nature and description the title of which vests in the State of Louisiana, together with all islands arising therein and other lands formed by accretion or by reliction, where allowed by law, excepting tax adjudicated lands, and not presently under mineral lease on February 9, 2005, situated in Plaquemines Parish, Louisiana, and more particularly described as follows: Beginning at a point on the North line of Block 31, Main Pass Area, Revised, having Coordinates of X = 2,627,975.00 and Y = 307,580.00; thence East 7,375.00 feet along the North line of said Block 31 to its Northeast corner having Coordinates of X = 2,635,350.00 and Y = 307,580.00; thence South 5,673.62 feet along the East line of said Block 31 to a point, also being the Northeast corner of State Lease No. 12002, as amended, having Coordinates of X = 2,635,350.00 and Y = 301,906.38; thence along the boundary of said State Lease No. 12002 the following courses: South 78 degrees 33 minutes 21 seconds West 881.07 feet, South 75 degrees 09 minutes 03 seconds West 593.20 feet, South 67 degrees 31 minutes 25 seconds West 598.99 feet, South 62 degrees 46 minutes 18 seconds West 618.96 feet, South 54 degrees 53 minutes 40 seconds West 979.30 feet, South 50 degrees 08 minutes 29 seconds West 3,369.94 feet, South 1,514.40 feet and East 5,928.83 feet to the Southeast corner of said State Lease No. 12002, also being a point on the East line of said Block 31 having Coordinates of X = 2,635,350.00 and Y = 296,830.00; thence South 3,762.00 feet along the East line of said Block 31 to a point, also being the Northeast corner of State Lease No. 18011 having Coordinates of X = 2,635,350.00 and Y = 293,068.00; thence along the boundary of said State Lease No. 18011 the following courses: North 63 degrees 07 minutes 03 seconds West 2,501.30 feet, South 44 degrees 10 minutes 52 seconds West 1,533.87 feet and South 16 degrees 19 minutes 24 seconds East 280.30 feet to the Southeast corner of said State Lease No. 18011, also being a point on the South line of said Block 31 having Coordinates of X = 2,632,128.78 and Y = 292,830.00; thence West 4,153.78 feet along the South line of said Block 31 to a point having Coordinates of X = 2,627,975.00 and Y = 292,830.00; thence North 5,840.00 feet to the East corner of State Lease No. 17294 having Coordinates of X = 2,627,975.00 and Y = 298,670.00; thence North 8,910.00 feet to the point of beginning, containing approximately **1,932.80 acres**, all as more particularly outlined on a plat on file in the Office of Mineral Resources, Department of Natural Resources. All bearings, distances and coordinates are based on Louisiana Coordinate System of 1927, (North or South Zone), where applicable.

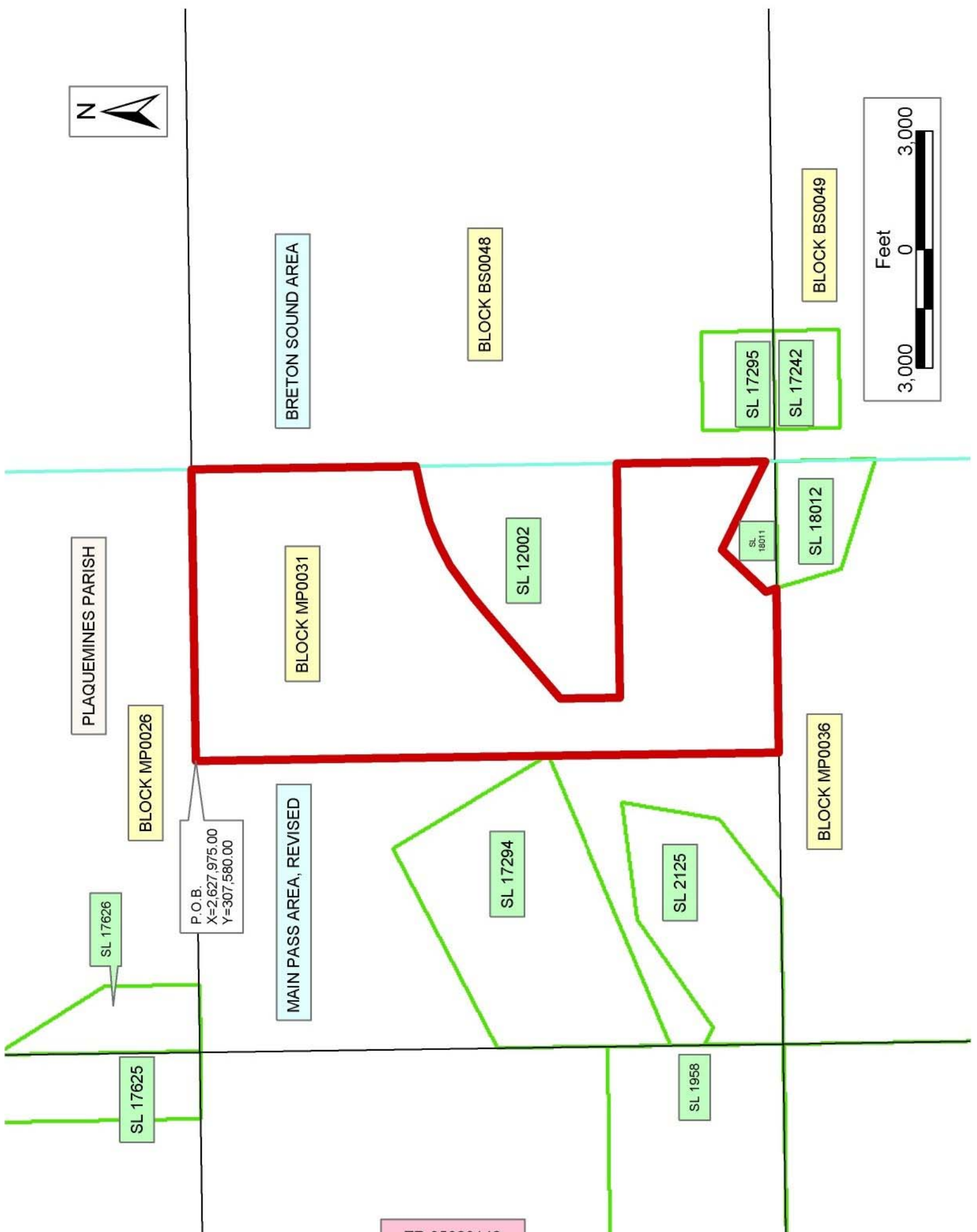
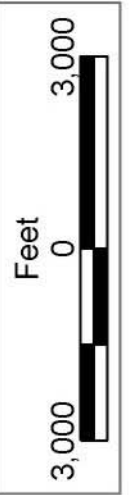
NOTE: The above description of the Tract nominated for lease has been provided and corrected, where required, exclusively by the nomination party. Any mineral lease selected from this Tract and awarded by the Louisiana State Mineral Board shall be without warranty of any kind, either express, implied, or statutory, including, but not limited to, the implied warranties of merchantability and fitness for a particular

purpose. Should the mineral lease awarded by the Louisiana State Mineral Board be subsequently modified, cancelled or abrogated due to the existence of conflicting leases, operating agreements, private claims or other future obligations or conditions which may affect all or any portion of the leased Tract, it shall not relieve the Lessee of the obligation to pay any bonus due thereon to the Louisiana State Mineral Board, nor shall the Louisiana State Mineral Board be obligated to refund any consideration paid by the Lessor prior to such modification, cancellation, or abrogation, including, but not limited to, bonuses, rentals and royalties.

NOTE: The State of Louisiana does hereby reserve, and this lease shall be subject to, the imprescriptible right of surface use in the nature of a servitude in favor of the Department of Natural Resources, including its Offices and Commissions, for the sole purpose of implementing, constructing, servicing and maintaining approved coastal zone management and/or restoration projects. Utilization of any and all rights derived under this lease by the mineral lessee, its agents, successors or assigns, shall not interfere with nor hinder the reasonable surface use by the Department of Natural Resources, its Offices or Commissions, as herein above reserved.

Applicant: A.D. Ventures

Bidder	Cash Payment	Price/Acre	Rental	Oil	Gas	Other



PLAQUEMINES PARISH

BRETON SOUND AREA

BLOCK BS0048

BLOCK BS0049

BLOCK MP0026

BLOCK MP0031

BLOCK MP0036

P.O.B.  
X=2,627,975.00  
Y=307,580.00

MAIN PASS AREA, REVISED

SL 17626

SL 17625

SL 17294

SL 12002

SL 2125

SL 1958

SL 18011

SL 18012

SL 17295

SL 17242

**TRACT 37126 - Portion of Block 48, Breton Sound Area, Plaquemines Parish, Louisiana**

All of the lands now or formerly constituting the beds and bottoms of all water bodies of every nature and description the title of which vests in the State of Louisiana, together with all islands arising therein and other lands formed by accretion or by reliction, where allowed by law, excepting tax adjudicated lands, and not presently under mineral lease on February 9, 2005, situated in Plaquemines Parish, Louisiana, and more particularly described as follows: Beginning at the North line of Block 48, Breton Sound Area, having Coordinates of X = 2,642,725.00 and Y = 307,580.00; thence South 14,750.00 feet to a point on the South line of said Block 48 having Coordinates of X = 2,642,725.00 and Y = 292,830.00; thence West 44.00 feet along the South line of said Block 48 to a point, also being the Southeast corner of State Lease No. 17296 having Coordinates of X = 2,642,681.00 and Y = 292,830.00; thence along the boundary of said State Lease No. 17296 the following courses: North 1,080.00 feet, West 3,525.00 feet and South 1,080.00 feet to the Southwest corner of said State Lease No. 17296, also being a point on the South line of said Block 48 having Coordinates of X = 2,639,156.00 and Y = 292,830.00; thence West 520.00 feet along the South line of said Block 48 to a point, also being the Southeast corner of State Lease No. 17295 having Coordinates of X = 2,638,636.00 and Y = 292,830.00; thence along the boundary of said State Lease No. 17295 the following courses: North 1,822.00 feet, West 2,485.00 feet and South 1,822.00 feet to the Southwest corner of said State Lease No. 17295, also being a point on the South line of said Block 48 having Coordinates of X = 2,636,151.00 and Y = 292,830.00; thence West 801.00 feet along the South line of said Block 48 to its Southwest corner having Coordinates of X = 2,635,350.00 and Y = 292,830.00; thence North 14,750.00 feet along the West line of said Block 48 to its Northwest corner having Coordinates of X = 2,635,350.00 and Y = 307,580.00; thence East 7,375.00 feet along the North line of said Block 48 to the point of beginning, containing approximately **2,305.94 acres**, all as more particularly outlined on a plat on file in the Office of Mineral Resources, Department of Natural Resources. All bearings, distances and coordinates are based on Louisiana Coordinate System of 1927, (North or South Zone), where applicable.

NOTE: The above description of the Tract nominated for lease has been provided and corrected, where required, exclusively by the nomination party. Any mineral lease selected from this Tract and awarded by the Louisiana State Mineral Board shall be without warranty of any kind, either express, implied, or statutory, including, but not limited to, the implied warranties of merchantability and fitness for a particular purpose. Should the mineral lease awarded by the Louisiana State Mineral Board be subsequently modified, cancelled or abrogated due to the existence of conflicting leases, operating agreements, private claims or other future obligations or conditions which may affect all or any portion of the leased Tract, it shall not relieve the Lessee of the obligation to pay any bonus due thereon to the Louisiana State Mineral Board, nor shall

the Louisiana State Mineral Board be obligated to refund any consideration paid by the Lessor prior to such modification, cancellation, or abrogation, including, but not limited to, bonuses, rentals and royalties.

NOTE: The State of Louisiana does hereby reserve, and this lease shall be subject to, the imprescriptible right of surface use in the nature of a servitude in favor of the Department of Natural Resources, including its Offices and Commissions, for the sole purpose of implementing, constructing, servicing and maintaining approved coastal zone management and/or restoration projects. Utilization of any and all rights derived under this lease by the mineral lessee, its agents, successors or assigns, shall not interfere with nor hinder the reasonable surface use by the Department of Natural Resources, its Offices or Commissions, as herein above reserved.

Applicant: A.D. Ventures

Bidder	Cash Payment	Price/Acre	Rental	Oil	Gas	Other





SL 16795

SL 18080

BLOCK BS0033

P.O.B.  
X=2,642,725.00  
Y=307,580.00

BRETON SOUND AREA

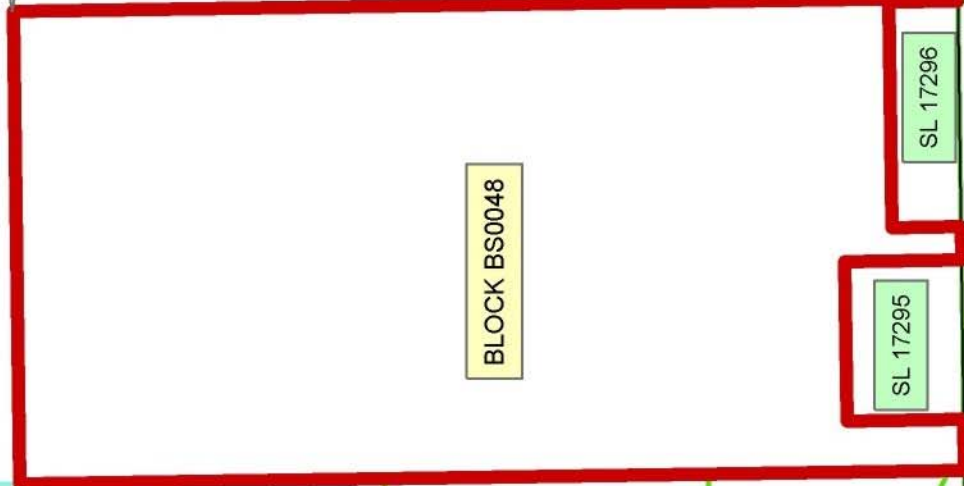
BLOCK BS0047

SL 17239

BLOCK BS0049



PLAQUEMINES PARISH



SL 17296

SL 17241

BLOCK BS0048

SL 17295

SL 17242

BLOCK MP0026

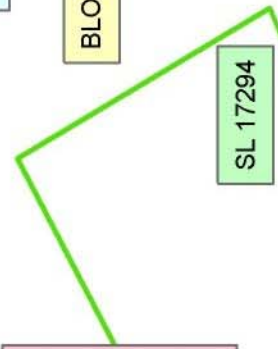
MAIN PASS AREA, REVISED

BLOCK MP0031

SL 12002

SL 18011

SL 18012



SL 17294

SL 2125

BLOCK MP0036

**TRACT 37127 - Portion of Block 33, Main Pass Area, Revised, Plaquemines Parish, Louisiana**

All of the lands now or formerly constituting the beds and bottoms of all water bodies of every nature and description the title of which vests in the State of Louisiana, together with all islands arising therein and other lands formed by accretion or by reliction, where allowed by law, excepting tax adjudicated lands, and not presently under mineral lease on February 9, 2005, situated in Plaquemines Parish, Louisiana, and more particularly described as follows: Beginning at the Northwest corner of State Lease No. 1958, as amended and a point on the East line of Block 33, Main Pass Area, Revised, having Coordinates of X = 2,605,850.00 and Y = 297,278.50; thence South 4,448.50 feet along the West line of said State Lease No. 1958 to its Southwest corner and the Southeast corner of said Block 33 having Coordinates of X = 2,605,850.00 and Y = 307,580.00; thence West approximately 9,427 feet along the South line of said Block 33, to its Southwest corner, having a Coordinate of Y = 307,580.00; thence Northeasterly and Northwesterly along the West line of said Block 33 to a point having a Coordinate of Y = 305,386.19; thence East approximately 9,815 feet to a point on the East line of said Block 33 having Coordinates of X = 2,605,850.00 and Y = 305,386.19; thence South 8,107.69 along the East line of said Block 33 to the point of beginning, containing approximately **2,336 acres**, all as more particularly outlined on a plat on file in the Office of Mineral Resources, Department of Natural Resources. All bearings, distances and coordinates are based on Louisiana Coordinate System of 1927, (North or South Zone), where applicable.

NOTE: The above description of the Tract nominated for lease has been provided and corrected, where required, exclusively by the nomination party. Any mineral lease selected from this Tract and awarded by the Louisiana State Mineral Board shall be without warranty of any kind, either express, implied, or statutory, including, but not limited to, the implied warranties of merchantability and fitness for a particular purpose. Should the mineral lease awarded by the Louisiana State Mineral Board be subsequently modified, cancelled or abrogated due to the existence of conflicting leases, operating agreements, private claims or other future obligations or conditions which may affect all or any portion of the leased Tract, it shall not relieve the Lessee of the obligation to pay any bonus due thereon to the Louisiana State Mineral Board, nor shall the Louisiana State Mineral Board be obligated to refund any consideration paid by the Lessor prior to such modification, cancellation, or abrogation, including, but not limited to, bonuses, rentals and royalties.

NOTE: The State of Louisiana does hereby reserve, and this lease shall be subject to, the imprescriptible right of surface use in the nature of a servitude in favor of the Department of Natural Resources, including its Offices and Commissions, for the sole purpose of implementing, constructing, servicing and maintaining approved coastal zone management and/or restoration projects. Utilization of any and all rights derived under this lease by the mineral lessee, its agents, successors or assigns,

shall not interfere with nor hinder the reasonable surface use by the Department of Natural Resources, its Offices or Commissions, as herein above reserved.

Applicant: Cypress Energy Corporation

Bidder	Cash Payment	Price/Acre	Rental	Oil	Gas	Other



PLAQUEMINES PARISH

MAIN PASS AREA, REVISED

BLOCK MP0033

BLOCK MP0032

BLOCK MP0035

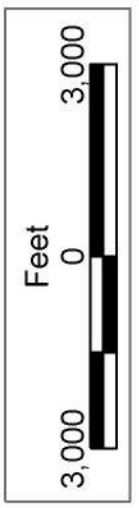
SL 1961

SL 1958

BLOCK MP0034

SL 195

P.O.B.  
X=2,605,850.00  
Y=297,278.50



**TRACT 37128 - Portion of Block 49, Breton Sound Area, Plaquemines Parish, Louisiana**

All of the lands now or formerly constituting the beds and bottoms of all water bodies of every nature and description the title of which vests in the State of Louisiana, together with all islands arising therein and other lands formed by accretion or by reliction, where allowed by law, excepting tax adjudicated lands, and not presently under mineral lease on February 9, 2005, situated in Plaquemines Parish, Louisiana, and more particularly described as follows: Beginning at a point on the East line of Block 49, Breton Sound Area, having Coordinates of X = 2,650,100.00 and Y = 285,455.00; thence West 14,750.00 feet to a point on the West line of said Block 49 having Coordinates of X = 2,635,350.00 and Y = 285,455.00; thence North 7,375.00 feet along the West line of said Block 49 to its Northwest corner having Coordinates of X = 2,635,350.00 and Y = 292,830.00; thence East 801.00 feet along the North line of said Block 49 to a point, also being the Northwest corner of State Lease No. 17242 having Coordinates of X = 2,636,151.00 and Y = 292,830.00; thence along the boundary of said State Lease No. 17242 the following courses: South 1,639.00 feet, East 2,485.00 feet and North 1,639.00 feet to the Northeast corner of said State Lease No. 17242, also being a point on the North line of said Block 49 having Coordinates of X = 2,638,636.00 and Y = 292,830.00; thence East 520.00 feet along the North line of said Block 49 to a point, also being the Northwest corner of State Lease No. 17241 having Coordinates of X = 2,639,156.00 and Y = 292,830.00; thence along the boundary of said State Lease No. 17241 the following courses: South 4,278.00 feet, East 3,525.00 feet and North 4,278.00 feet to the Northeast corner of said State Lease No. 17241, also being a point on the North line of said Block 49 having Coordinates of X = 2,642,681.00 and Y = 292,830.00; thence East 7,419.00 feet along the North line of said Block 49 to its Northeast corner having Coordinates of X = 2,650,100.00 and Y = 292,830.00; thence South 890.00 feet along the East line of said Block 49 to a point, also being the Northeast corner of State Lease No. 17239 having Coordinates of X = 2,650,100.00 and Y = 291,940.00; thence along the boundary of said State Lease No. 17239 the following courses: West 2,429.00 feet, South 2,757.00 feet and East 2,429.00 feet to the Southeast corner of said State Lease No. 17239, also being a point on the East line of said Block 49 having Coordinates of X = 2,650,100.00 and Y = 289,183.00; thence South 3,728.00 feet along the East line of said Block 49 to the point of beginning, containing approximately **1,903.85 acres**, all as more particularly outlined on a plat on file in the Office of Mineral Resources, Department of Natural Resources. All bearings, distances and coordinates are based on Louisiana Coordinate System of 1927, (North or South Zone), where applicable.

NOTE: The above description of the Tract nominated for lease has been provided and corrected, where required, exclusively by the nomination party. Any mineral lease selected from this Tract and awarded by the Louisiana State Mineral Board shall be without warranty of any kind, either express, implied, or statutory, including, but not limited to, the

implied warranties of merchantability and fitness for a particular purpose. Should the mineral lease awarded by the Louisiana State Mineral Board be subsequently modified, cancelled or abrogated due to the existence of conflicting leases, operating agreements, private claims or other future obligations or conditions which may affect all or any portion of the leased Tract, it shall not relieve the Lessee of the obligation to pay any bonus due thereon to the Louisiana State Mineral Board, nor shall the Louisiana State Mineral Board be obligated to refund any consideration paid by the Lessor prior to such modification, cancellation, or abrogation, including, but not limited to, bonuses, rentals and royalties.

NOTE: The State of Louisiana does hereby reserve, and this lease shall be subject to, the imprescriptible right of surface use in the nature of a servitude in favor of the Department of Natural Resources, including its Offices and Commissions, for the sole purpose of implementing, constructing, servicing and maintaining approved coastal zone management and/or restoration projects. Utilization of any and all rights derived under this lease by the mineral lessee, its agents, successors or assigns, shall not interfere with nor hinder the reasonable surface use by the Department of Natural Resources, its Offices or Commissions, as herein above reserved.

Applicant: A.D. Ventures

Bidder	Cash Payment	Price/Acre	Rental	Oil	Gas	Other



PLAQUEMINES PARISH

BRETON SOUND AREA

BLOCK BS0048

SL 17296

SL 17241

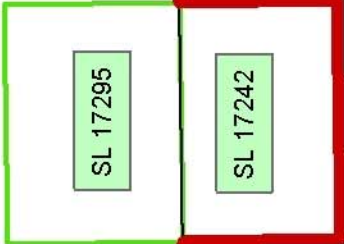
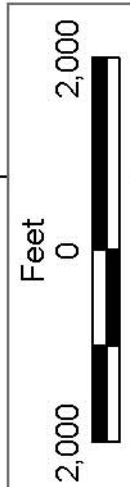
BLOCK BS0049

SL 17295

SL 17242

BLOCK BS0050

P.O.B.  
X=2,650,100.00  
Y=285,455.00



SL 18011

SL 18012

BLOCK MP0036

SL 18014



SL 18164

**TRACT 37129 - Terrebonne Parish, Louisiana**

All of the lands now or formerly constituting the beds and bottoms of all water bodies of every nature and description the title of which vests in the State of Louisiana, together with all islands arising therein and other lands formed by accretion or by reliction, where allowed by law, excepting tax adjudicated lands, and not presently under mineral lease on February 9, 2005, situated in Terrebonne Parish, Louisiana, and more particularly described as follows: Beginning at a point having Coordinates of X = 2,026,300.00 and Y = 286,000.00; thence North 9,058.97 feet to a point on the Southern boundary of State Lease No. 14108, as amended, having Coordinates of X = 2,026,300.00 and Y = 295,058.97; thence along the Southern and Eastern boundaries of said State Lease No. 14108 the following courses: South 82 degrees 39 minutes 42 seconds East 3,173.78 feet to its Southeast corner having Coordinates of X = 2,029,447.78 and Y = 294,653.58 and North 12 degrees 18 minutes 28 seconds East approximately 1,297 feet to a point on the South line of State Lease No. 5683, as amended; thence Easterly approximately 3,940 feet along the South line of said State Lease No. 5683 to its Southeast corner; thence Easterly approximately 5,736 feet to a point having Coordinates of X = 2,039,400.00 and Y = 295,957.15; thence South 4,661.07 feet to the Northwest corner of State Lease No. 18266 having Coordinates of X = 2,039,400.00 and Y = 291,296.08; thence South 1,867.76 feet along the West line of said State Lease No. 18266 to its Southwest corner having Coordinates of X = 2,039,400.00 and Y = 289,428.33; thence South 3,428.33 feet to a point having Coordinates of X = 2,039,400.00 and Y = 286,000.00; thence West 13,100.00 feet to the point of beginning, containing approximately **83 acres**, all as more particularly outlined on a plat on file in the Office of Mineral Resources, Department of Natural Resources. All bearings, distances and coordinates are based on Louisiana Coordinate System of 1927, (North or South Zone), where applicable.

NOTE: The above description of the Tract nominated for lease has been provided and corrected, where required, exclusively by the nomination party. Any mineral lease selected from this Tract and awarded by the Louisiana State Mineral Board shall be without warranty of any kind, either express, implied, or statutory, including, but not limited to, the implied warranties of merchantability and fitness for a particular purpose. Should the mineral lease awarded by the Louisiana State Mineral Board be subsequently modified, cancelled or abrogated due to the existence of conflicting leases, operating agreements, private claims or other future obligations or conditions which may affect all or any portion of the leased Tract, it shall not relieve the Lessee of the obligation to pay any bonus due thereon to the Louisiana State Mineral Board, nor shall the Louisiana State Mineral Board be obligated to refund any consideration paid by the Lessor prior to such modification, cancellation, or abrogation, including, but not limited to, bonuses, rentals and royalties.

NOTE: The State of Louisiana does hereby reserve, and this lease shall be subject to, the imprescriptible right of surface use in the nature of a

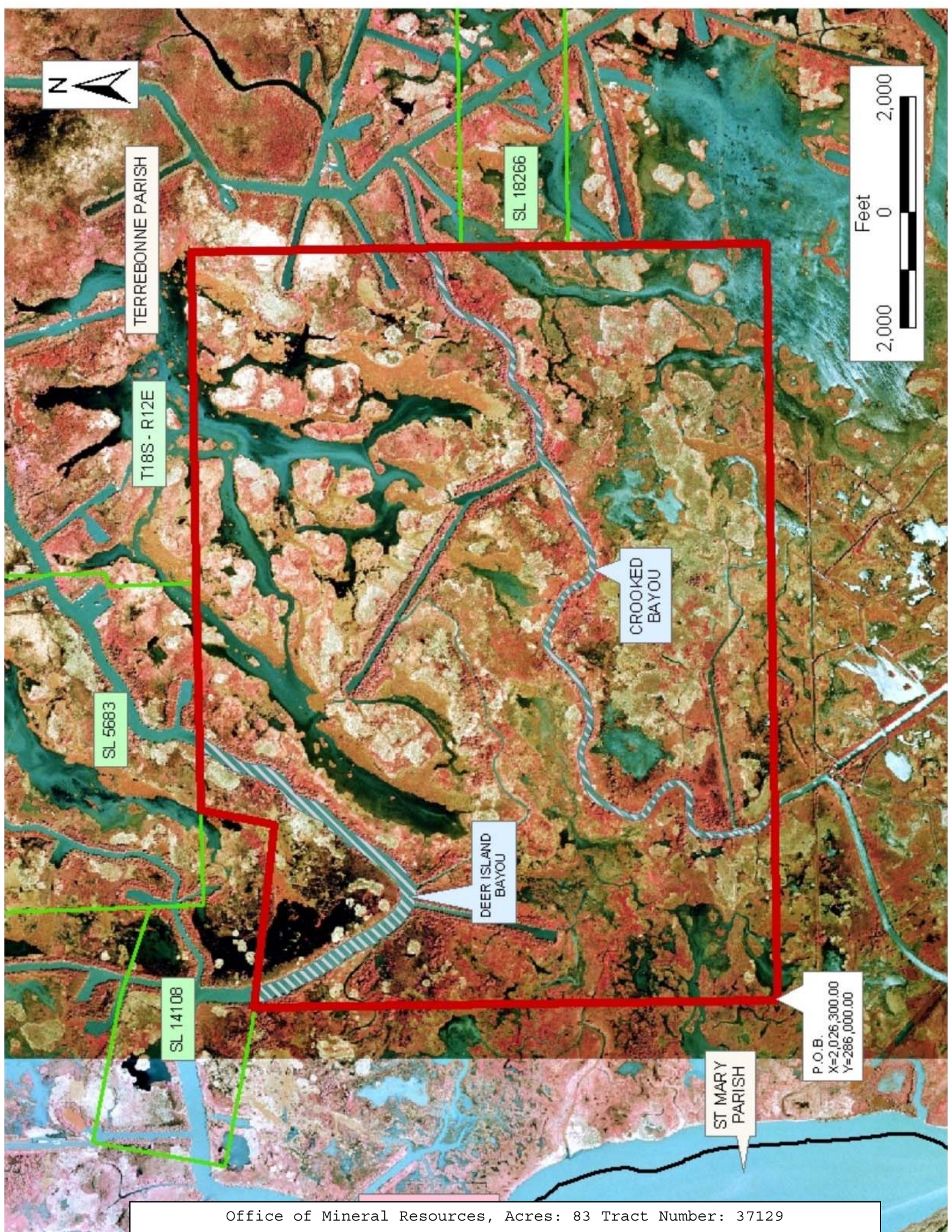


servitude in favor of the Department of Natural Resources, including its Offices and Commissions, for the sole purpose of implementing, constructing, servicing and maintaining approved coastal zone management and/or restoration projects. Utilization of any and all rights derived under this lease by the mineral lessee, its agents, successors or assigns, shall not interfere with nor hinder the reasonable surface use by the Department of Natural Resources, its Offices or Commissions, as herein above reserved.

Applicant: O. P. Cheramie & Associates

Bidder	Cash Payment	Price/Acre	Rental	Oil	Gas	Other





TERREBONNE PARISH

T18S - R12E

SL 18266

SL 5683

SL 14108

CROOKED BAYOU

DEER ISLAND BAYOU

ST MARY PARISH

P.O.B.  
X=2,026,300.00  
Y=286,000.00





**TRACT 37130 - Terrebonne Parish, Louisiana**

All of the lands now or formerly constituting the beds and bottoms of all water bodies of every nature and description the title of which vests in the State of Louisiana, together with all islands arising therein and other lands formed by accretion or by reliction, where allowed by law, excepting tax adjudicated lands, and not presently under mineral lease on February 9, 2005, situated in Terrebonne Parish, Louisiana, and more particularly described as follows: Beginning at a point on the East line of State Lease No. 17892 having Coordinates of X = 2,125,024.23 and Y = 265,820.51; Thence East 10,730.33 feet to a point having Coordinates of X = 2,135,754.56 and Y = 265,820.51; thence South 6,878.99 feet to a point having Coordinates of X = 2,135,754.56 and Y = 258,941.52; thence West 1,447.06 feet to the Northeast corner of State Lease No. 17893 having Coordinates of X = 2,134,307.50 and Y = 258,941.52; thence South 88 degrees 15 minutes 40 seconds West 5,925.24 feet along the North boundary of said State Lease No. 17893 to a point on the East boundary of State Lease No. 12105, as amended, having Coordinates of X = 2,128,384.99 and Y = 258,761.72; thence along the boundaries of said State Lease No. 12105 the following: Northwesterly along an arc having a radius of 1,000.00 feet and a center at X = 2,127,385.22 and Y = 258,783.55 to a point having Coordinates of X = 2,128,027.38 and Y = 259,550.12, Northwesterly along an arc having a radius of 2,250.00 feet and a center at X = 2,126,582.52 and Y = 257,825.34 to a point having Coordinates of X = 2,127,518.51 and Y = 259,871.41, and West approximately 1,142 feet to the Southeast corner of Operating Agreement No. 136 having a Coordinate of Y = 259,871.41; thence Northeasterly and Westerly along the East and North boundary of said Operating Agreement No. 136 to its Southwest corner located on the North boundary of said State Lease No. 12105 having Coordinates of X = 2,125,816.08 and Y = 259,871.41; thence along the Northwesterly boundary of said State Lease No. 12105 the following: Southwesterly along an arc having a radius of 1,750.00 feet and a center at X = 2,126,631.40 and Y = 258,322.94 to a point having Coordinates of X = 2,125,104.15 and Y = 259,177.35; thence North 00 degrees 41 minutes 22 seconds West 2,982.86 feet to the Southeast corner of said State Lease No. 17892, having Coordinates of X = 2,125,068.27 and Y = 262,160.00; thence North 00 degrees 41 minutes 22 seconds West 3,660.78 feet along the East boundary of said State Lease No. 17892 to the point of beginning, containing approximately **70.00 acres**, all as more particularly outlined on a plat on file in the Office of Mineral Resources, Department of Natural Resources. All bearings, distances and coordinates are based on Louisiana Coordinate System of 1927, (North or South Zone), where applicable.

NOTE: The above description of the Tract nominated for lease has been provided and corrected, where required, exclusively by the nomination party. Any mineral lease selected from this Tract and awarded by the Louisiana State Mineral Board shall be without warranty of any kind, either express, implied, or statutory, including, but not limited to, the implied warranties of merchantability and fitness for a particular purpose. Should the mineral lease awarded by the Louisiana State Mineral

Board be subsequently modified, cancelled or abrogated due to the existence of conflicting leases, operating agreements, private claims or other future obligations or conditions which may affect all or any portion of the leased Tract, it shall not relieve the Lessee of the obligation to pay any bonus due thereon to the Louisiana State Mineral Board, nor shall the Louisiana State Mineral Board be obligated to refund any consideration paid by the Lessor prior to such modification, cancellation, or abrogation, including, but not limited to, bonuses, rentals and royalties.

NOTE: The State of Louisiana does hereby reserve, and this lease shall be subject to, the imprescriptible right of surface use in the nature of a servitude in favor of the Department of Natural Resources, including its Offices and Commissions, for the sole purpose of implementing, constructing, servicing and maintaining approved coastal zone management and/or restoration projects. Utilization of any and all rights derived under this lease by the mineral lessee, its agents, successors or assigns, shall not interfere with nor hinder the reasonable surface use by the Department of Natural Resources, its Offices or Commissions, as herein above reserved.

Applicant: Leslie M. Cooper

Bidder	Cash Payment	Price/Acre	Rental	Oil	Gas	Other





LAKE DE CADE



TERREBONNE PARISH

T19S - R15E

JUG LAKE

SL 17893

TURTLE BAYOU

SL 18224

P.O.B.  
X=2,125,024.23  
Y=265,820.51

BAYOU LA LOUITRE

SL 17892

AO 0136

SL 12105

SL 3475

JUG LAKE

SL 12105



**TRACT 37131 - Plaquemines Parish, Louisiana**

All of the lands now or formerly constituting the beds and bottoms of all water bodies of every nature and description the title of which vests in the State of Louisiana, together with all islands arising therein and other lands formed by accretion or by reliction, where allowed by law, excepting tax adjudicated lands, and not presently under mineral lease on February 9, 2005, situated in Plaquemines Parish, Louisiana, and more particularly described as follows: Beginning at the Southeast corner of State Lease No. 13566 having Coordinates of X = 2,574,097.65 and Y = 246,001.48; Thence North 960.70 feet along the East line of State Lease No. 13566 to a point having Coordinates of X = 2,574,097.65 and Y = 246,962.18; Thence East 768.88 feet to a point having Coordinates of X = 2,574,866.53 and Y = 246,962.18; Thence South 57 degrees 24 minutes 14 seconds East 1,230.40 feet; Thence South 59 degrees 54 minutes 12 seconds East 456.02 feet to a point having Coordinates of X = 2,576,297.67 and Y = 246,070.67; Thence South 01 degrees 40 minutes 58 seconds East 6,006.54 feet to a point having Coordinates of X = 2,576,474.05 and Y = 240,066.72; Thence South 88 degrees 20 minutes 03 seconds West 2,258.94 feet to a point having Coordinates of X = 2,574,216.06 and Y = 241,001.05; Thence Northerly on an arc having a radius 879.32 feet and a center at X = 2,574,864.58 and Y = 240,594.87 to the Southeast corner of State Lease No. 14537, as amended, having Coordinates of X = 2,573,994.23 and Y = 240,469.61; Thence along the boundaries of said State Lease No. 14537 the following; Northerly along an arc having a radius of 879.32 feet and a center at 2,574,864.58 and Y = 240,594.87, North 15 degrees 16 minutes 19 seconds East 615.34 feet to a point having Coordinates of X = 2,574,221.08 and Y = 241,540.93, Northerly along a arc having a radius of 838.08 feet and a center at X = 2,573,421.86 and Y = 241,793.17 to a point having X = 2,574,225.11 and Y = 242,032.26, Northwesterly along an arc having a radius of 1,523.76 feet and a center at X = 2,572,807.26 and Y = 241,474.11 to a point having Coordinates of X = 2,573,208.64 and Y = 242,944.05, Southwesterly along an arc having a radius of 1,840.95 feet and a center at X = 2,572,547.90 and Y = 241,225.76 to a point having Coordinates of X = 2,571,304.93 and Y = 242,583.75 and South 41 degrees 51 minutes 30 seconds West 259.74 feet to the Northwest corner of said State Lease No. 14537 having coordinates of X = 2,571,131.61 and Y = 242,390.30; Thence North 01 degrees 39 minutes 54 seconds West 158.21 feet to a point having Coordinates of X = 2,571,127.01 and Y = 242,548.44; Thence South 88 degrees 20 minutes 06 seconds West approximately 1,350 feet to a point of intersection with the Eastern boundary of State Lease No. 192, as amended; Thence Northerly, Easterly and Northerly along the said Eastern boundary of State Lease No. 192 to the Southwest corner of said State Lease No. 13566 having a Coordinate of Y = 246,001.48; Thence East approximately 3,100 feet along the South line of said State Lease No. 13566 to the point of beginning, **LESS AND EXCEPT** those portion of State Lease No. 3279, as amended, State Lease No. 3212, as amended and State Lease No. 192, as amended, that may lie within the above described tract, containing approximately **588 acres**, all as more particularly outlined on a plat on file in the Office of Mineral Resources, Department of Natural Resources.

All bearings, distances and coordinates are based on Louisiana Coordinate System of 1927, (North or South Zone), where applicable.

NOTE: The above description of the Tract nominated for lease has been provided and corrected, where required, exclusively by the nomination party. Any mineral lease selected from this Tract and awarded by the Louisiana State Mineral Board shall be without warranty of any kind, either express, implied, or statutory, including, but not limited to, the implied warranties of merchantability and fitness for a particular purpose. Should the mineral lease awarded by the Louisiana State Mineral Board be subsequently modified, cancelled or abrogated due to the existence of conflicting leases, operating agreements, private claims or other future obligations or conditions which may affect all or any portion of the leased Tract, it shall not relieve the Lessee of the obligation to pay any bonus due thereon to the Louisiana State Mineral Board, nor shall the Louisiana State Mineral Board be obligated to refund any consideration paid by the Lessor prior to such modification, cancellation, or abrogation, including, but not limited to, bonuses, rentals and royalties.

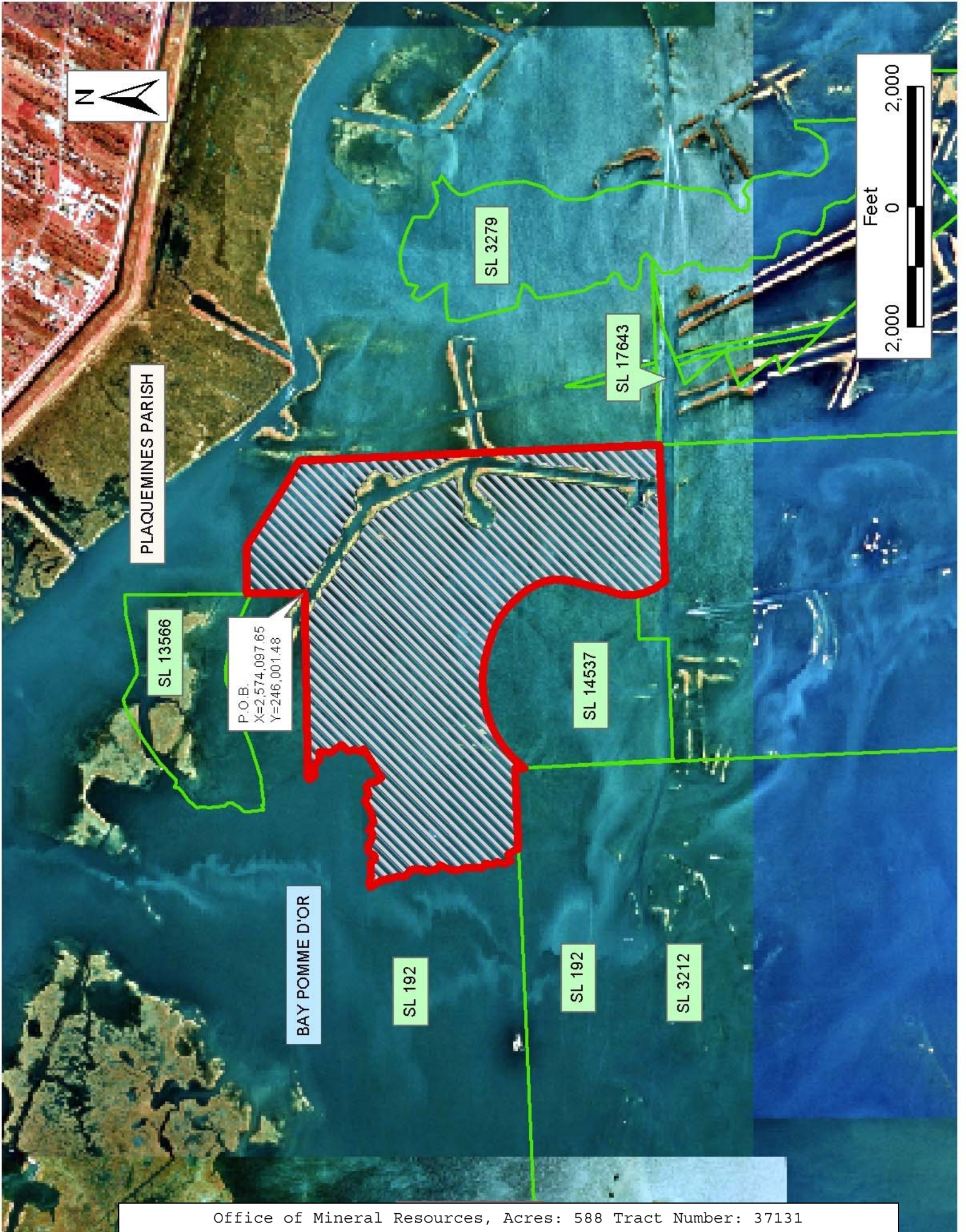
NOTE: The State of Louisiana does hereby reserve, and this lease shall be subject to, the imprescriptible right of surface use in the nature of a servitude in favor of the Department of Natural Resources, including its Offices and Commissions, for the sole purpose of implementing, constructing, servicing and maintaining approved coastal zone management and/or restoration projects. Utilization of any and all rights derived under this lease by the mineral lessee, its agents, successors or assigns, shall not interfere with nor hinder the reasonable surface use by the Department of Natural Resources, its Offices or Commissions, as herein above reserved.

NOTE: The Department of Wildlife and Fisheries has designated certain areas in the coastal waters of the State of Louisiana as Oyster Seed Bed Areas. The exact location of those Seed Bed Areas must be obtained from the Department of Wildlife and Fisheries and any work done under a mineral lease from the State of Louisiana may necessarily be conducted in conformity with the rules and regulations promulgated by the said Department of Wildlife and Fisheries for Oyster Seed Bed Areas.

Bidder	Cash Payment	Price/Acre	Rental	Oil	Gas	Other

Applicant: Petro-Land Resources, Inc.





**TRACT 37132 - Plaquemines Parish, Louisiana**

All of the lands now or formerly constituting the beds and bottoms of all water bodies of every nature and description the title of which vests in the State of Louisiana, together with all islands arising therein and other lands formed by accretion or by reliction, where allowed by law, excepting tax adjudicated lands, and not presently under mineral lease on February 9, 2005, situated in Plaquemines Parish, Louisiana, and more particularly described as follows: Beginning at a point having Coordinates of X = 2,541,625.27 and Y = 224,885.53; thence North 620.59 feet to a point on the South line of State Lease No. 16152 having Coordinates of X = 2,541,625.27 and Y = 225,506.12; thence along the boundaries of said State Lease No. 16152 the following: East 2,374.73 feet, North 821.67 feet, North 55 degrees 25 minutes 55 seconds West 1,283.66 feet and West 1,317.70 feet to a point on its North Line having Coordinates of X = 2,541,625.27 and Y = 227,056.12; thence North approximately 3,217.02 feet to a point on the South line of State Lease No. 3011, as amended; thence Southeasterly and Easterly along the Southern boundary of said State Lease No. 3011 to its Southeast corner and a Southern corner of State Lease No. 2652; thence along the boundaries of said State Lease No. 2652 the following: North 2,640.00 feet, East 7,920.00 feet, South 2,640.00 feet and East 3,950.00 feet to a point on its South Line and the Northwest corner of State Lease No. 3155; thence South 3,846.71 feet along the West line of said State Lease No. 3155 to a point having Coordinates of X = 2,559,784.49 and Y = 224,885.53; thence West 18,159.22 feet to the point of beginning, **LESS AND EXCEPT** that portion, if any, of State Lease Nos. 2652, 3011, as amended, and 3155, that may lie within the above described tract, containing approximately **1,861 acres**, all as more particularly outlined on a plat on file in the Office of Mineral Resources, Department of Natural Resources. All bearings, distances and coordinates are based on Louisiana Coordinate System of 1927, (North or South Zone), where applicable.

NOTE: The above description of the Tract nominated for lease has been provided and corrected, where required, exclusively by the nomination party. Any mineral lease selected from this Tract and awarded by the Louisiana State Mineral Board shall be without warranty of any kind, either express, implied, or statutory, including, but not limited to, the implied warranties of merchantability and fitness for a particular purpose. Should the mineral lease awarded by the Louisiana State Mineral Board be subsequently modified, cancelled or abrogated due to the existence of conflicting leases, operating agreements, private claims or other future obligations or conditions which may affect all or any portion of the leased Tract, it shall not relieve the Lessee of the obligation to pay any bonus due thereon to the Louisiana State Mineral Board, nor shall the Louisiana State Mineral Board be obligated to refund any consideration paid by the Lessor prior to such modification, cancellation, or abrogation, including, but not limited to, bonuses, rentals and royalties.



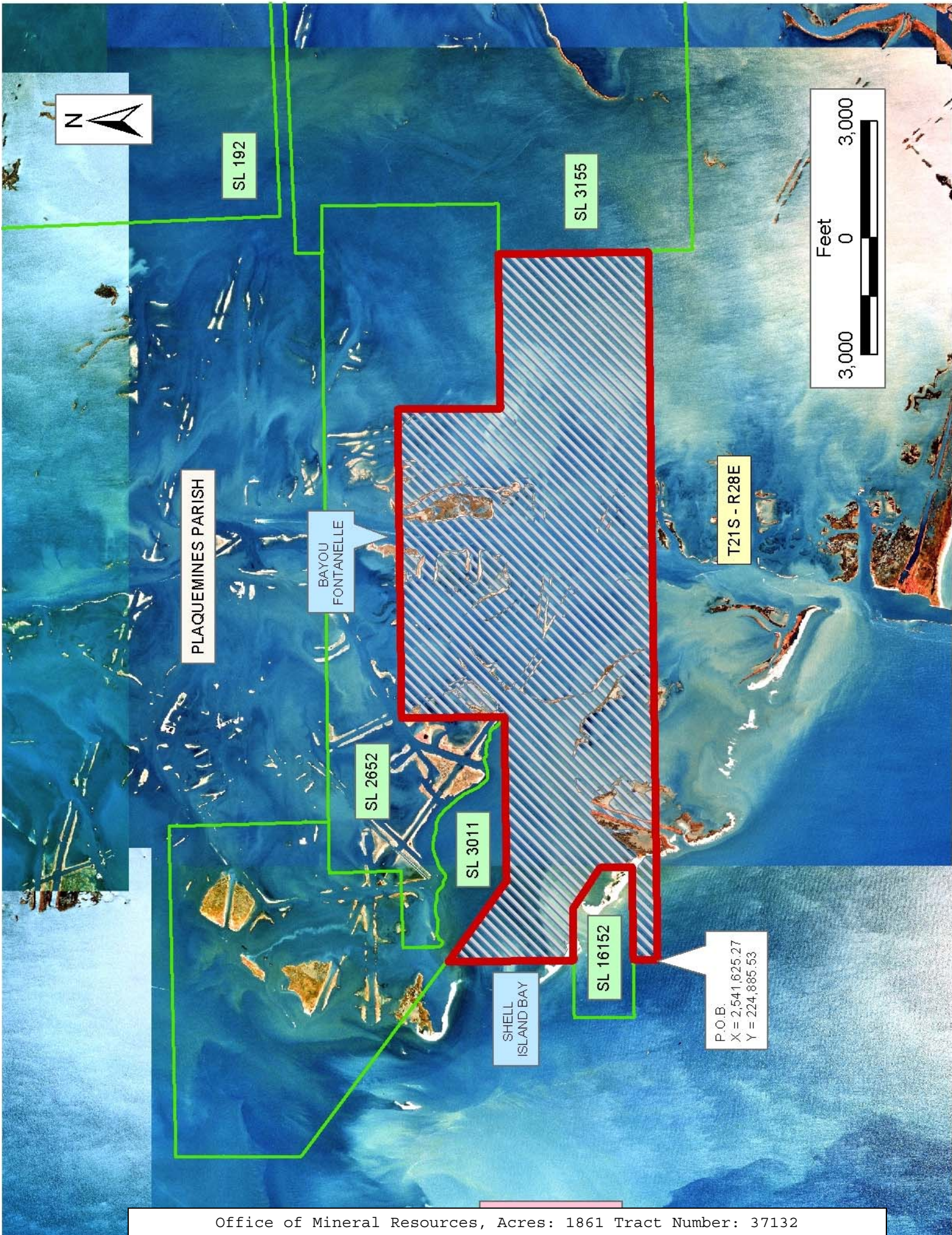
NOTE: The State of Louisiana does hereby reserve, and this lease shall be subject to, the imprescriptible right of surface use in the nature of a servitude in favor of the Department of Natural Resources, including its Offices and Commissions, for the sole purpose of implementing, constructing, servicing and maintaining approved coastal zone management and/or restoration projects. Utilization of any and all rights derived under this lease by the mineral lessee, its agents, successors or assigns, shall not interfere with nor hinder the reasonable surface use by the Department of Natural Resources, its Offices or Commissions, as herein above reserved.

NOTE: The Department of Wildlife and Fisheries has designated certain areas in the coastal waters of the State of Louisiana as Oyster Seed Bed Areas. The exact location of those Seed Bed Areas must be obtained from the Department of Wildlife and Fisheries and any work done under a mineral lease from the State of Louisiana may necessarily be conducted in conformity with the rules and regulations promulgated by the said Department of Wildlife and Fisheries for Oyster Seed Bed Areas.

Applicant: Mark A. O'Neal & Associates, Inc.

Bidder	Cash Payment	Price/Acre	Rental	Oil	Gas	Other





SL 192

SL 3155

PLAQUEMINES PARISH

BAYOU  
FONTANELLE

SL 2652

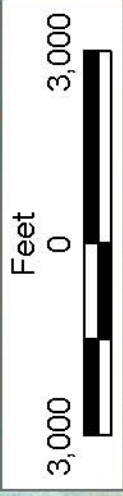
SL 3011

SHELL  
ISLAND BAY

T21S - R28E

SL 16152

P.O.B.  
X = 2,541,625.27  
Y = 224,885.53





**TRACT 37133 - Terrebonne Parish, Louisiana**

All of the lands now or formerly constituting the beds and bottoms of all water bodies of every nature and description the title of which vests in the State of Louisiana, together with all islands arising therein and other lands formed by accretion or by reliction, where allowed by law, excepting tax adjudicated lands, and not presently under mineral lease on February 9, 2005, situated in Terrebonne Parish, Louisiana, and more particularly described as follows: Beginning at a point having Coordinates of X = 2,104,130.00 and Y = 224,010.00; thence North 5,490.00 feet to a point having Coordinates of X = 2,104,130.00 and Y = 229,500.00; thence East 8,140.00 feet to a point having Coordinates of X = 2,112,270.00 and Y = 229,500.00; thence South 3,100.00 feet to a point having Coordinates of X = 2,112,270.00 and Y = 226,400.00; thence West 5,220.00 feet to a point having Coordinates of X = 2,107,050.00 and Y = 226,400.00; thence South 2,390.00 feet to a point having Coordinates of X = 2,107,050.00 and Y = 224,010.00; thence West 2,920.00 feet to the point of beginning, containing approximately **396 acres**, all as more particularly outlined on a plat on file in the Office of Mineral Resources, Department of Natural Resources. All bearings, distances and coordinates are based on Louisiana Coordinate System of 1927, (North or South Zone), where applicable.

NOTE: The above description of the Tract nominated for lease has been provided and corrected, where required, exclusively by the nomination party. Any mineral lease selected from this Tract and awarded by the Louisiana State Mineral Board shall be without warranty of any kind, either express, implied, or statutory, including, but not limited to, the implied warranties of merchantability and fitness for a particular purpose. Should the mineral lease awarded by the Louisiana State Mineral Board be subsequently modified, cancelled or abrogated due to the existence of conflicting leases, operating agreements, private claims or other future obligations or conditions which may affect all or any portion of the leased Tract, it shall not relieve the Lessee of the obligation to pay any bonus due thereon to the Louisiana State Mineral Board, nor shall the Louisiana State Mineral Board be obligated to refund any consideration paid by the Lessor prior to such modification, cancellation, or abrogation, including, but not limited to, bonuses, rentals and royalties.

NOTE: The State of Louisiana does hereby reserve, and this lease shall be subject to, the imprescriptible right of surface use in the nature of a servitude in favor of the Department of Natural Resources, including its Offices and Commissions, for the sole purpose of implementing, constructing, servicing and maintaining approved coastal zone management and/or restoration projects. Utilization of any and all rights derived under this lease by the mineral lessee, its agents, successors or assigns, shall not interfere with nor hinder the reasonable surface use by the Department of Natural Resources, its Offices or Commissions, as herein above reserved.

NOTE: The Department of Wildlife and Fisheries has designated certain areas in the coastal waters of the State of Louisiana as Oyster Seed Bed Areas. The exact location of those Seed Bed Areas must be obtained from the Department of Wildlife and Fisheries and any work done under a mineral lease from the State of Louisiana may necessarily be conducted in conformity with the rules and regulations promulgated by the said Department of Wildlife and Fisheries for Oyster Seed Bed Areas.

Applicant: Land Resources, Inc.

Bidder	Cash Payment	Price/Acre	Rental	Oil	Gas	Other

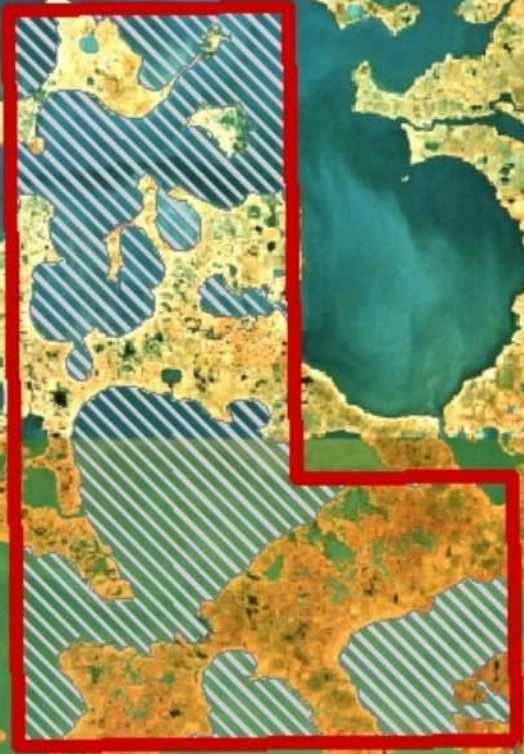




LAKE MECHANT

BAYOU DU LARGE

TERREBONNE PARISH



P.O.B.  
X=2,104,130.00  
Y=224,010.00