

**TRACT 37114 - Lafourche Parish, Louisiana**

All of the lands now or formerly constituting the beds and bottoms of all water bodies of every nature and description the title of which vests in the State of Louisiana, together with all islands arising therein and other lands formed by accretion or by reliction, where allowed by law, excepting tax adjudicated lands, and not presently under mineral lease on February 9, 2005, situated in Lafourche Parish, Louisiana, and more particularly described as follows: Beginning at a point having Coordinates of X = 2,326,414.00 and Y = 357,258.00; thence North 9,332.00 feet to a point having Coordinates of X = 2,326,414.00 and Y = 366,590.00; thence East 5,496.00 feet to a point having Coordinates of X = 2,331,910.00 and Y = 366,590.00; thence South 3,348.00 feet to a point having Coordinates of X = 2,331,910.00 and Y = 363,242.00; thence East 7,870.00 feet to a point having Coordinates of X = 2,339,780.00 and Y = 363,242.00; thence South 5,984.00 feet to a point having Coordinates of X = 2,339,780.00 and Y = 357,258.00; thence West 13,366.00 feet to the point of beginning, containing approximately **1,649 acres**, all as more particularly outlined on a plat on file in the Office of Mineral Resources, Department of Natural Resources. All bearings, distances and coordinates are based on Louisiana Coordinate System of 1927, (North or South Zone), where applicable.

NOTE: The above description of the Tract nominated for lease has been provided and corrected, where required, exclusively by the nomination party. Any mineral lease selected from this Tract and awarded by the Louisiana State Mineral Board shall be without warranty of any kind, either express, implied, or statutory, including, but not limited to, the implied warranties of merchantability and fitness for a particular purpose. Should the mineral lease awarded by the Louisiana State Mineral Board be subsequently modified, cancelled or abrogated due to the existence of conflicting leases, operating agreements, private claims or other future obligations or conditions which may affect all or any portion of the leased Tract, it shall not relieve the Lessee of the obligation to pay any bonus due thereon to the Louisiana State Mineral Board, nor shall the Louisiana State Mineral Board be obligated to refund any consideration paid by the Lessor prior to such modification, cancellation, or abrogation, including, but not limited to, bonuses, rentals and royalties.

NOTE: The State of Louisiana does hereby reserve, and this lease shall be subject to, the imprescriptible right of surface use in the nature of a servitude in favor of the Department of Natural Resources, including its Offices and Commissions, for the sole purpose of implementing, constructing, servicing and maintaining approved coastal zone management and/or restoration projects. Utilization of any and all rights derived under this lease by the mineral lessee, its agents, successors or assigns, shall not interfere with nor hinder the reasonable surface use by the Department of Natural Resources, its Offices or Commissions, as herein above reserved.

Applicant: Red Oak Resources

Bidder	Cash Payment	Price/Acre	Rental	Oil	Gas	Other



LAFOURCHE PARISH

LAKE SALVADOR

CATAHOULA BAY

T16S - R21E

T16S - R22E

P.O.B.  
X=2,326,414.00  
Y=357,258.00



**TRACT 37115 - St. Mary Parish, Louisiana**

All of the lands now or formerly constituting the beds and bottoms of all water bodies of every nature and description the title of which vests in the State of Louisiana, together with all islands arising therein and other lands formed by accretion or by reliction, where allowed by law, excepting tax adjudicated lands, and not presently under mineral lease on February 9, 2005, situated in St. Mary Parish, Louisiana, and more particularly described as follows: Beginning at a point having Coordinates of X = 2,060,341.97 and Y = 361,385.33; thence East 3,667.97 feet to the Southwest corner of State Lease No. 17922 having Coordinates of X = 2,064,009.94 and Y = 361,385.33; thence East 2,466.59 feet along the South boundary of said State Lease No. 17922 to its Southeast corner having Coordinates of X = 2,066,476.53 and Y = 361,385.33; thence East 2,865.44 feet to a point having Coordinates of X = 2,069,341.97 and Y = 361,385.33; thence South 6,553.71 feet to a point on the North boundary of State Lease No. 16815, as amended, having Coordinates of X = 2,069,341.97 and Y = 354,831.62; thence South 88 degrees 10 minutes 00 second West 2,036.23 feet along the North boundary of said State Lease No. 16815 to a Northern corner having Coordinates of X = 2,067,306.78 and Y = 354,766.48; thence West 6,964.81 feet to a point having Coordinates of X = 2,060,341.97 and Y = 354,766.48; thence North 6,618.85 feet to the point of beginning, **LESS AND EXCEPT** all those portions of Operating Agreement Nos. A0257 and A0146 that may lie within the above described tract, containing approximately **103 acres**, all as more particularly outlined on a plat on file in the Office of Mineral Resources, Department of Natural Resources. All bearings, distances and coordinates are based on Louisiana Coordinate System of 1927, (North or South Zone), where applicable.

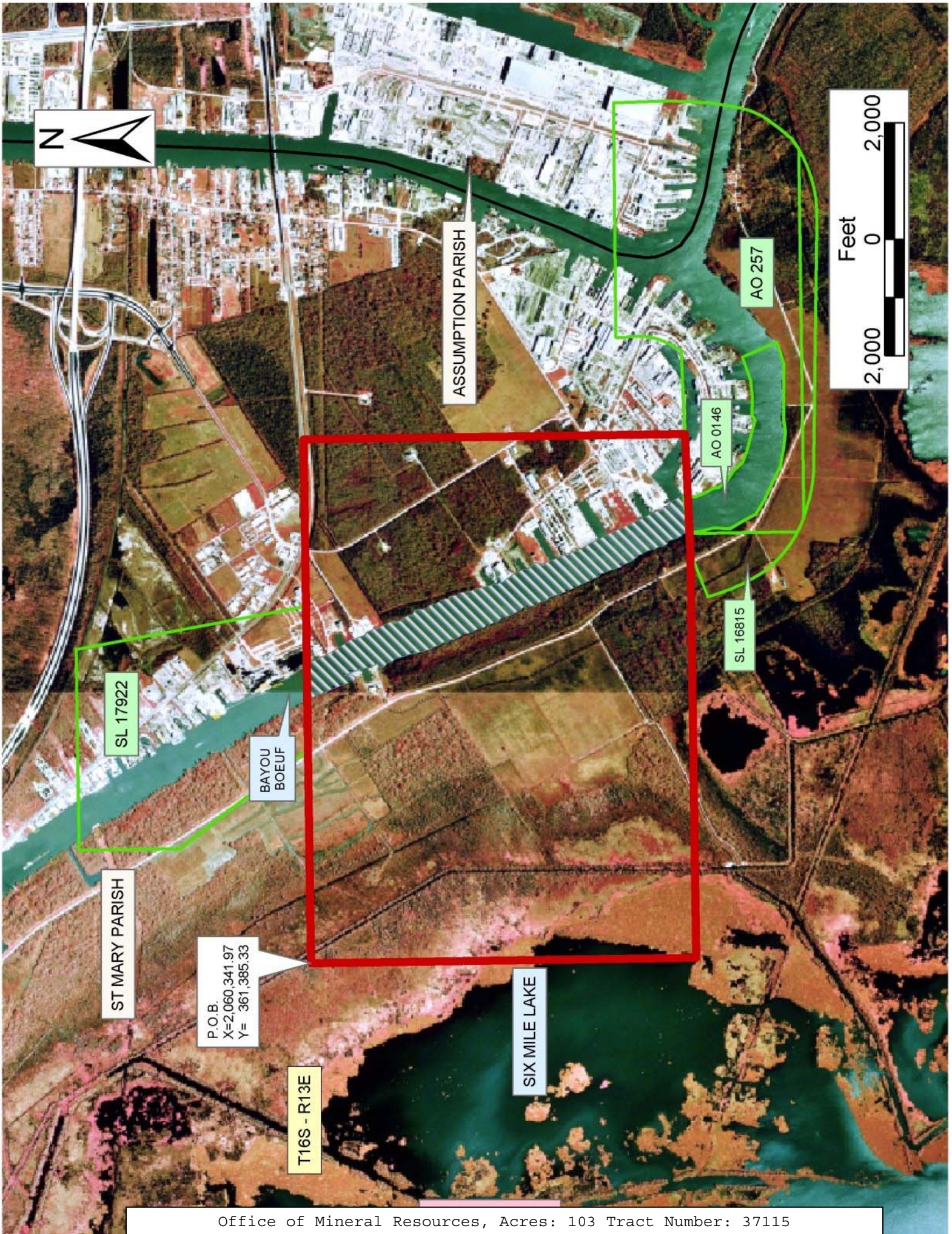
NOTE: The above description of the Tract nominated for lease has been provided and corrected, where required, exclusively by the nomination party. Any mineral lease selected from this Tract and awarded by the Louisiana State Mineral Board shall be without warranty of any kind, either express, implied, or statutory, including, but not limited to, the implied warranties of merchantability and fitness for a particular purpose. Should the mineral lease awarded by the Louisiana State Mineral Board be subsequently modified, cancelled or abrogated due to the existence of conflicting leases, operating agreements, private claims or other future obligations or conditions which may affect all or any portion of the leased Tract, it shall not relieve the Lessee of the obligation to pay any bonus due thereon to the Louisiana State Mineral Board, nor shall the Louisiana State Mineral Board be obligated to refund any consideration paid by the Lessor prior to such modification, cancellation, or abrogation, including, but not limited to, bonuses, rentals and royalties.

NOTE: The State of Louisiana does hereby reserve, and this lease shall be subject to, the imprescriptible right of surface use in the nature of a servitude in favor of the Department of Natural Resources, including its Offices and Commissions, for the sole purpose of implementing, constructing, servicing and maintaining approved coastal zone management

and/or restoration projects. Utilization of any and all rights derived under this lease by the mineral lessee, its agents, successors or assigns, shall not interfere with nor hinder the reasonable surface use by the Department of Natural Resources, its Offices or Commissions, as herein above reserved.

Applicant: Kenneth S. Hill, Properties, Inc.

Bidder	Cash Payment	Price/Acre	Rental	Oil	Gas	Other



ASSUMPTION PARISH

SL 17922

BAYOU BOEUF

AO 0146

SL 16815

AO 257

ST MARY PARISH

P.O.B.  
X=2,060,341.97  
Y= 361,385.33

T16S - R13E

SIX MILE LAKE

**TRACT 37116 - Lafourche and Terrebonne Parishes, Louisiana**

All of the lands now or formerly constituting the beds and bottoms of all water bodies of every nature and description the title of which vests in the State of Louisiana, together with all islands arising therein and other lands formed by accretion or by reliction, where allowed by law, excepting tax adjudicated lands, and not presently under mineral lease on February 9, 2005, situated in Lafourche and Terrebonne Parishes, Louisiana, and more particularly described as follows: Beginning at a point on the East Line of State Lease No. 17891 having Coordinates of X = 2,229,500.00 and Y = 331,611.48; thence East 12,616.62 feet to a point having Coordinates of X = 2,242,116.62 and Y = 331,611.48; thence South 18,480.00 feet to a point having Coordinates of X = 2,242,116.62 and Y = 313,131.48; thence West 18,480.00 feet to a point having Coordinates of X = 2,223,636.62 and Y = 313,131.48; thence North 10,988.52 feet to a point on the South Line of said State Lease No. 17891 having Coordinates of X = 2,223,636.62 and Y = 324,120.00; thence along the boundary of said State Lease No. 17891 the following courses: East 5,863.38 feet and North 7,491.48 feet to the point of beginning, containing approximately **161 acres**, all as more particularly outlined on a plat on file in the Office of Mineral Resources, Department of Natural Resources. All bearings, distances and coordinates are based on Louisiana Coordinate System of 1927, (North or South Zone), where applicable.

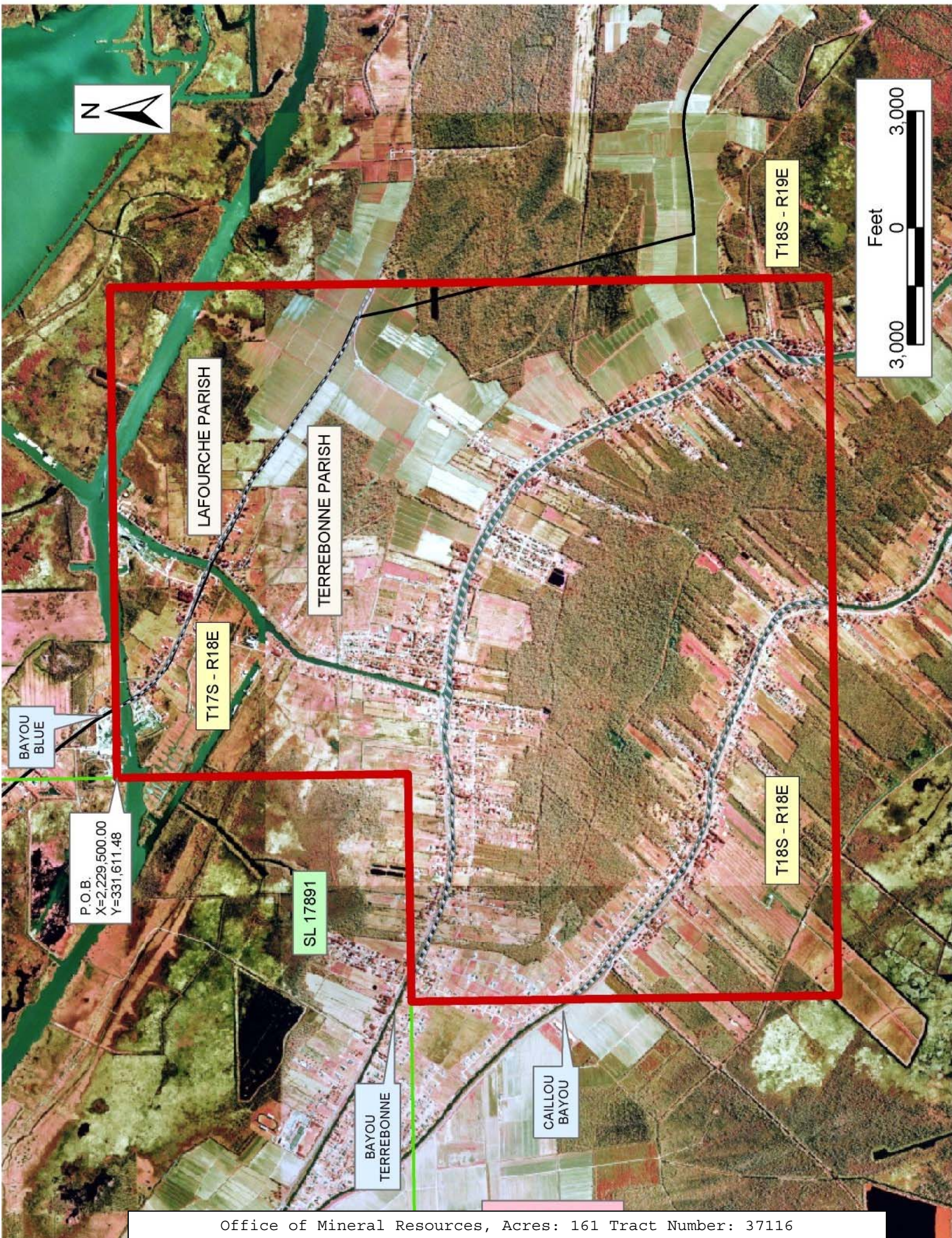
NOTE: The above description of the Tract nominated for lease has been provided and corrected, where required, exclusively by the nomination party. Any mineral lease selected from this Tract and awarded by the Louisiana State Mineral Board shall be without warranty of any kind, either express, implied, or statutory, including, but not limited to, the implied warranties of merchantability and fitness for a particular purpose. Should the mineral lease awarded by the Louisiana State Mineral Board be subsequently modified, cancelled or abrogated due to the existence of conflicting leases, operating agreements, private claims or other future obligations or conditions which may affect all or any portion of the leased Tract, it shall not relieve the Lessee of the obligation to pay any bonus due thereon to the Louisiana State Mineral Board, nor shall the Louisiana State Mineral Board be obligated to refund any consideration paid by the Lessor prior to such modification, cancellation, or abrogation, including, but not limited to, bonuses, rentals and royalties.

NOTE: The State of Louisiana does hereby reserve, and this lease shall be subject to, the imprescriptible right of surface use in the nature of a servitude in favor of the Department of Natural Resources, including its Offices and Commissions, for the sole purpose of implementing, constructing, servicing and maintaining approved coastal zone management and/or restoration projects. Utilization of any and all rights derived under this lease by the mineral lessee, its agents, successors or assigns, shall not interfere with nor hinder the reasonable surface use by the Department of Natural Resources, its Offices or Commissions, as herein above reserved.

Applicant: Day Exploration

Bidder	Cash Payment	Price/Acre	Rental	Oil	Gas	Other





**TRACT 37117 - Portion of Block 33, Breton Sound Area, Plaquemines Parish, Louisiana**

All of the lands now or formerly constituting the beds and bottoms of all water bodies of every nature and description the title of which vests in the State of Louisiana, together with all islands arising therein and other lands formed by accretion or by reliction, where allowed by law, excepting tax adjudicated lands, and not presently under mineral lease on February 9, 2005, situated in Plaquemines Parish, Louisiana, and more particularly described as follows: Beginning at a point on the South line of Block 33, Breton Sound Area, having Coordinates of X = 2,642,725.00 and Y = 307,580.00; thence North 14,750.00 feet to a point on the North line of said Block 33 having Coordinates of X = 2,642,725.00 and Y = 322,330.00; thence East 7,375.00 feet along the North line of said Block 33 to its Northeast corner having Coordinates of X = 2,650,100.00 and Y = 322,330.00; thence South 7,514.46 feet along the East line of said Block 33 to a point, also being the Northeast corner of State Lease No. 16298, as amended, having Coordinates of X = 2,650,100.00 and Y = 314,815.54; thence along the boundary of said State Lease No. 16298 the following courses: West 1,022.05 feet and South 2,035.54 feet to the Southwest corner of said State Lease No. 16298, also being a point on the North line of State Lease No. 16795, as amended, having Coordinates of X = 2,649,077.95 and Y = 312,780.00; thence along the boundary of said State Lease No. 16795 the following courses: West 927.95 feet, South 4,204.21 feet and East 1,950.00 feet to the Southeast corner of said State Lease No. 16795, also being a point on the East line of said Block 33 having Coordinates of X = 2,650,100.00 and Y = 308,575.79; thence South 995.79 feet along the East line of said Block 33 to its Southeast corner having Coordinates of X = 2,650,100.00 and Y = 307,580.00; thence West 7,375.00 feet along the South line of said Block 33 to the point of beginning, containing approximately **2,261.31 acres**, all as more particularly outlined on a plat on file in the Office of Mineral Resources, Department of Natural Resources. All bearings, distances and coordinates are based on Louisiana Coordinate System of 1927, (North or South Zone), where applicable.

NOTE: The above description of the Tract nominated for lease has been provided and corrected, where required, exclusively by the nomination party. Any mineral lease selected from this Tract and awarded by the Louisiana State Mineral Board shall be without warranty of any kind, either express, implied, or statutory, including, but not limited to, the implied warranties of merchantability and fitness for a particular purpose. Should the mineral lease awarded by the Louisiana State Mineral Board be subsequently modified, cancelled or abrogated due to the existence of conflicting leases, operating agreements, private claims or other future obligations or conditions which may affect all or any portion of the leased Tract, it shall not relieve the Lessee of the obligation to pay any bonus due thereon to the Louisiana State Mineral Board, nor shall the Louisiana State Mineral Board be obligated to refund any consideration

paid by the Lessor prior to such modification, cancellation, or abrogation, including, but not limited to, bonuses, rentals and royalties.

NOTE: The State of Louisiana does hereby reserve, and this lease shall be subject to, the imprescriptible right of surface use in the nature of a servitude in favor of the Department of Natural Resources, including its Offices and Commissions, for the sole purpose of implementing, constructing, servicing and maintaining approved coastal zone management and/or restoration projects. Utilization of any and all rights derived under this lease by the mineral lessee, its agents, successors or assigns, shall not interfere with nor hinder the reasonable surface use by the Department of Natural Resources, its Offices or Commissions, as herein above reserved.

Applicant: A.D. Ventures

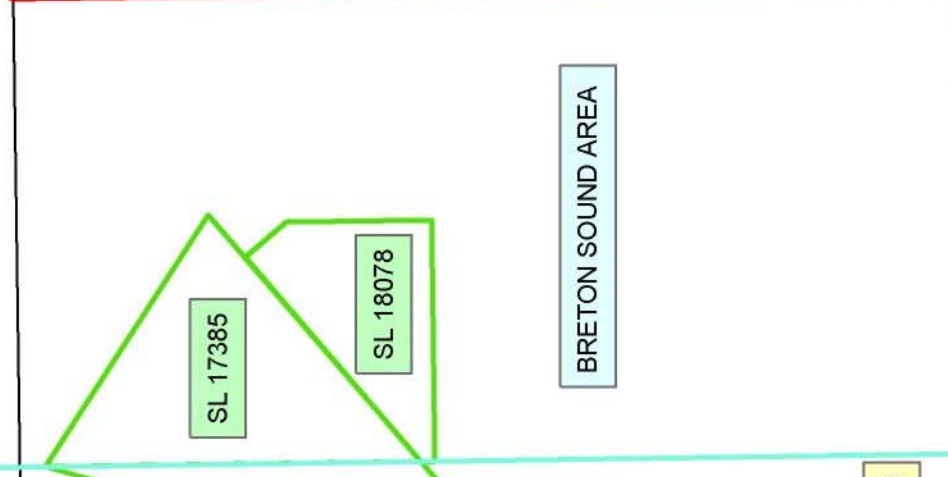
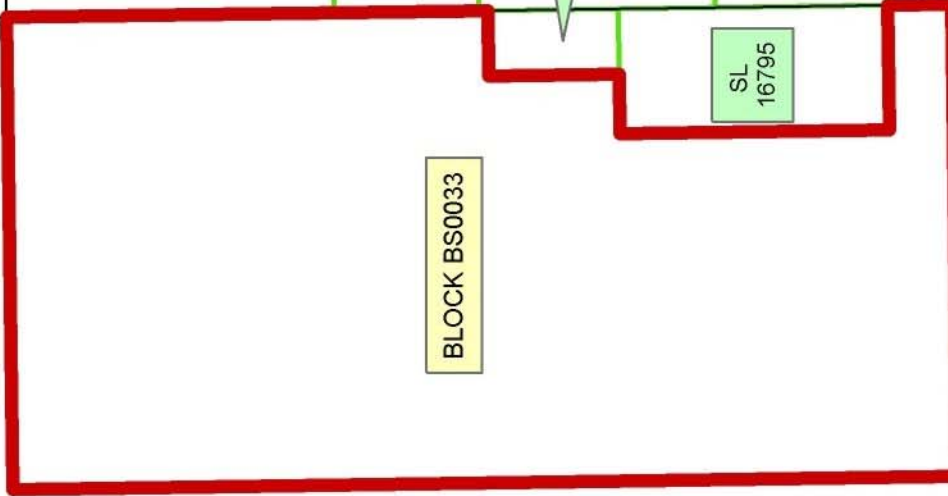
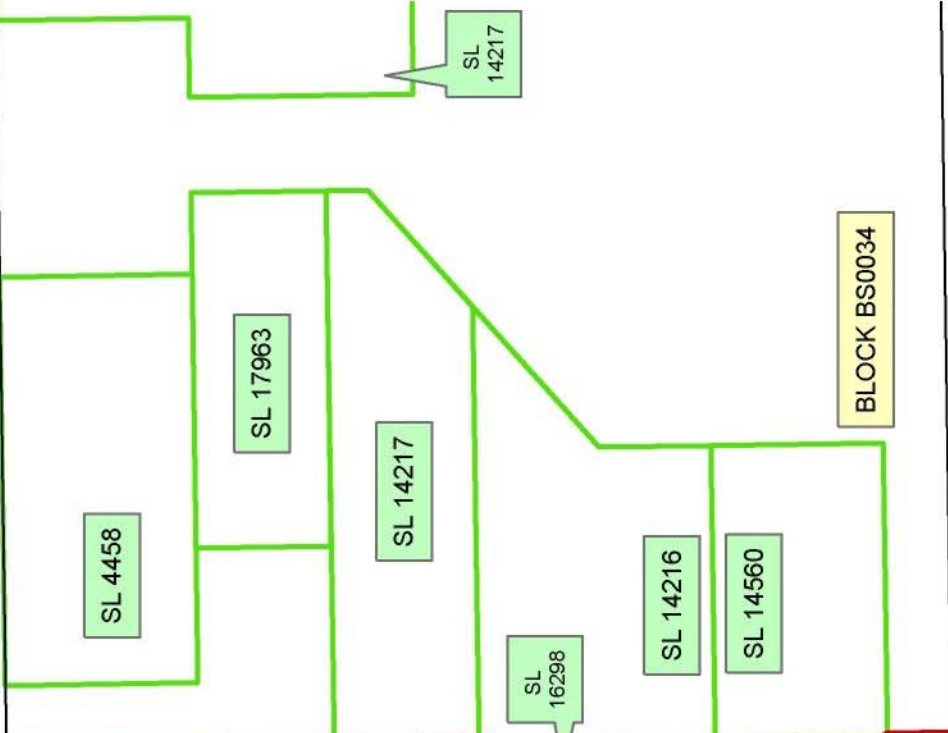
Bidder	Cash Payment	Price/Acre	Rental	Oil	Gas	Other



BLOCK BS0031

BLOCK BS0032

MAIN PASS AREA,  
REVISED

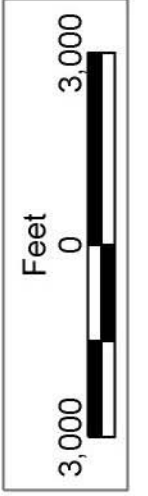


BLOCK BS0047

BLOCK BS0048

BLOCK MP0026

P.O.B.  
X=2,642,725.00  
Y=307,580.00



**TRACT 37118 - Portion of Block 26, Main Pass Area, Revised, Plaquemines Parish, Louisiana**

All of the lands now or formerly constituting the beds and bottoms of all water bodies of every nature and description the title of which vests in the State of Louisiana, together with all islands arising therein and other lands formed by accretion or by reliction, where allowed by law, excepting tax adjudicated lands, and not presently under mineral lease on February 9, 2005, situated in Plaquemines Parish, Louisiana, and more particularly described as follows: Beginning at a point on the South line of Block 26, Main Pass Area, Revised, having Coordinates of X = 2,627,975.00 and Y = 307,580.00; thence West 5,675.00 feet along the South line of said Block 26, also being the Southeast corner of State Lease No. 17626 having Coordinates of X = 2,622,300.00 and Y = 307,580.00; thence along the boundary of said State Lease No. 17626 the following courses: North 2,395.00 feet and North 31 degrees 21 minutes 17 seconds West 3,267.12 feet to the Northwest corner of said State Lease No. 17626, also being a point on the West line of said Block 26 having Coordinates of X = 2,620,600.00 and Y = 312,765.00; thence North 9,565.00 feet on the West line of said Block 26 to its Northwest corner having Coordinates of X = 2,620,600.00 and Y = 322,330.00; thence East 7,375.00 feet on the North line of said Block 26 to a point having Coordinates of X = 2,627,975.00 and Y = 322,330.00; thence South 14,750.00 feet to the point of beginning, containing approximately **2,349.36 acres**, all as more particularly outlined on a plat on file in the Office of Mineral Resources, Department of Natural Resources. All bearings, distances and coordinates are based on Louisiana Coordinate System of 1927, (North or South Zone), where applicable.

NOTE: The above description of the Tract nominated for lease has been provided and corrected, where required, exclusively by the nomination party. Any mineral lease selected from this Tract and awarded by the Louisiana State Mineral Board shall be without warranty of any kind, either express, implied, or statutory, including, but not limited to, the implied warranties of merchantability and fitness for a particular purpose. Should the mineral lease awarded by the Louisiana State Mineral Board be subsequently modified, cancelled or abrogated due to the existence of conflicting leases, operating agreements, private claims or other future obligations or conditions which may affect all or any portion of the leased Tract, it shall not relieve the Lessee of the obligation to pay any bonus due thereon to the Louisiana State Mineral Board, nor shall the Louisiana State Mineral Board be obligated to refund any consideration paid by the Lessor prior to such modification, cancellation, or abrogation, including, but not limited to, bonuses, rentals and royalties.

NOTE: The State of Louisiana does hereby reserve, and this lease shall be subject to, the imprescriptible right of surface use in the nature of a servitude in favor of the Department of Natural Resources, including its Offices and Commissions, for the sole purpose of implementing, constructing, servicing and maintaining approved coastal zone management

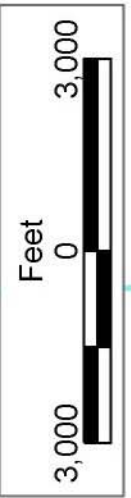
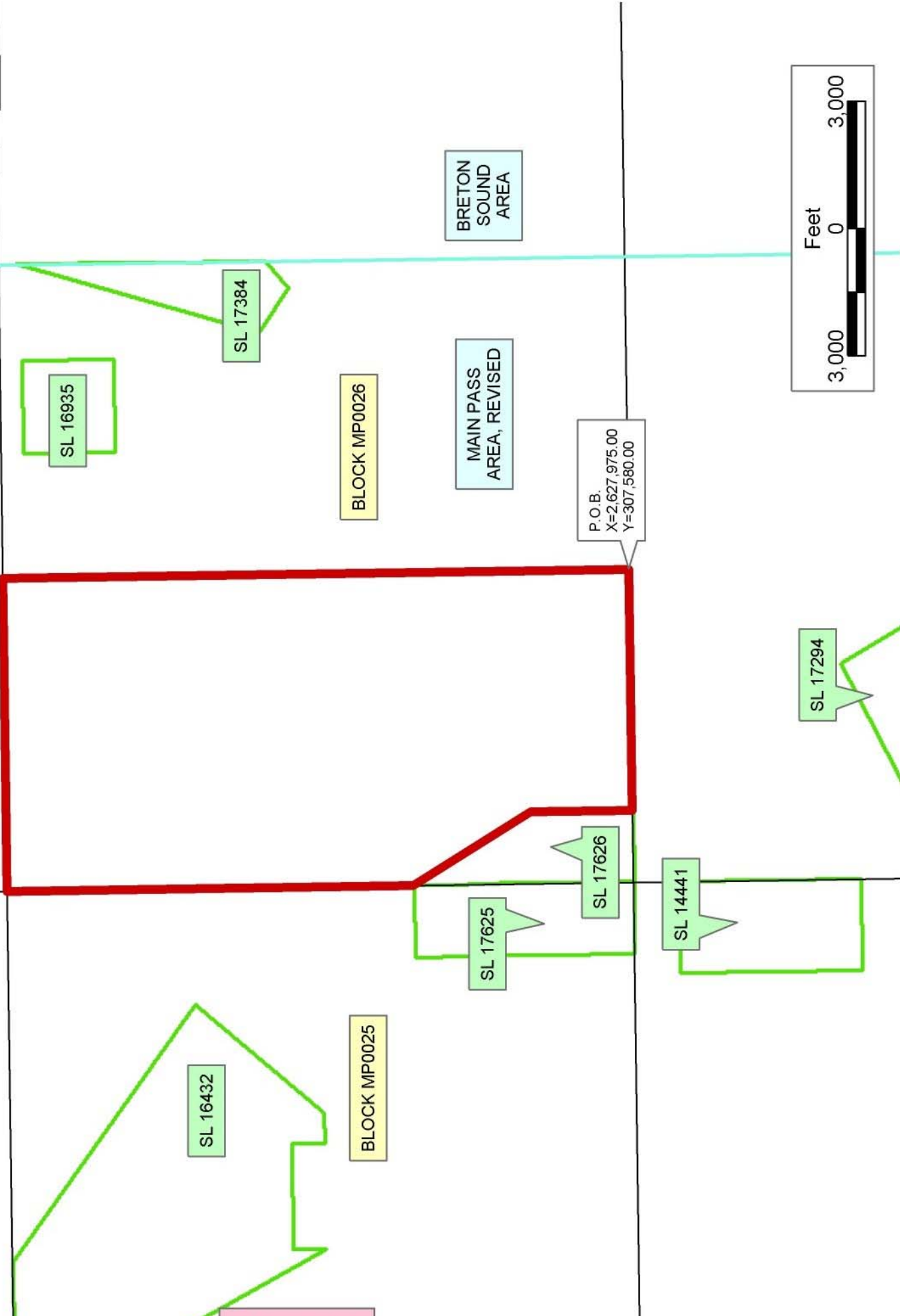
and/or restoration projects. Utilization of any and all rights derived under this lease by the mineral lessee, its agents, successors or assigns, shall not interfere with nor hinder the reasonable surface use by the Department of Natural Resources, its Offices or Commissions, as herein above reserved.

Applicant: A.D. Ventures

Bidder	Cash Payment	Price/Acre	Rental	Oil	Gas	Other



PLAQUEMINES PARISH



**TRACT 37119 - Portion of Block 26, Main Pass Area, Revised, Plaquemines Parish, Louisiana**

All of the lands now or formerly constituting the beds and bottoms of all water bodies of every nature and description the title of which vests in the State of Louisiana, together with all islands arising therein and other lands formed by accretion or by reliction, where allowed by law, excepting tax adjudicated lands, and not presently under mineral lease on February 9, 2005, situated in Plaquemines Parish, Louisiana, and more particularly described as follows: Beginning at a point on the South line of Block 26, Main Pass Area, Revised, having Coordinates of X = 2,627,975.00 and Y = 307,580.00; thence North 14,750.00 feet to a point on the North line of said Block 26 having Coordinates of X = 2,627,975.00 and Y = 322,330.00; thence East 7,375.00 feet on the North line of said Block 26 to its Northeast corner having Coordinates of X = 2,635,350.00 and Y = 322,330.00; thence South 400.00 feet along the East line of said Block 26 to a point, also being the North corner of State Lease No. 17384 having Coordinates of X = 2,635,350.00 and Y = 321,930.00; thence along the boundary of said State Lease No. 17384 the following courses: South 16 degrees 36 minutes 25 seconds West 5,948.11 feet, South 56 degrees 18 minutes 36 seconds East 1,261.94 feet, and North 50 degrees 07 minutes 57 seconds East 846.87 feet to the Southeast corner of said State Lease No. 17384, also being a point on the East line of said Block 26 having Coordinates of X = 2,635,350.00 and Y = 316,072.86; thence South 8,492.86 feet along the East line of said Block 26 to its Southeast corner having Coordinates of X = 2,635,350.00 and Y = 307,580.00; thence West 7,375.00 feet along the South line of said Block 26 to the point of beginning, **LESS AND EXCEPT** that portion of State Lease No. 16935 that lies within the above described boundary, and described as follows: Beginning at a point having Coordinates of X = 2,630,883.00 and Y = 321,820.00, thence East 2,187.00 feet to a point having Coordinates of X = 2,633,070.00 and Y = 321,820.00, thence South 2,148.00 feet to a point having Coordinates of X = 2,633,070.00 and Y = 319,672.00, thence West 2,187.00 feet to a point having Coordinates of X = 2,630,883.00 and Y = 319,672.00, thence North 2,148.00 feet to the point of beginning, containing approximately **2,263.37 acres**, all as more particularly outlined on a plat on file in the Office of Mineral Resources, Department of Natural Resources. All bearings, distances and coordinates are based on Louisiana Coordinate System of 1927, (North or South Zone), where applicable.

NOTE: The above description of the Tract nominated for lease has been provided and corrected, where required, exclusively by the nomination party. Any mineral lease selected from this Tract and awarded by the Louisiana State Mineral Board shall be without warranty of any kind, either express, implied, or statutory, including, but not limited to, the implied warranties of merchantability and fitness for a particular purpose. Should the mineral lease awarded by the Louisiana State Mineral Board be subsequently modified, cancelled or abrogated due to the existence of conflicting leases, operating agreements, private claims or other future obligations or conditions which may affect all or any portion

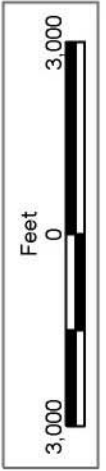
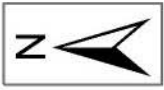


of the leased Tract, it shall not relieve the Lessee of the obligation to pay any bonus due thereon to the Louisiana State Mineral Board, nor shall the Louisiana State Mineral Board be obligated to refund any consideration paid by the Lessor prior to such modification, cancellation, or abrogation, including, but not limited to, bonuses, rentals and royalties.

NOTE: The State of Louisiana does hereby reserve, and this lease shall be subject to, the imprescriptible right of surface use in the nature of a servitude in favor of the Department of Natural Resources, including its Offices and Commissions, for the sole purpose of implementing, constructing, servicing and maintaining approved coastal zone management and/or restoration projects. Utilization of any and all rights derived under this lease by the mineral lessee, its agents, successors or assigns, shall not interfere with nor hinder the reasonable surface use by the Department of Natural Resources, its Offices or Commissions, as herein above reserved.

Applicant: A.D. Ventures

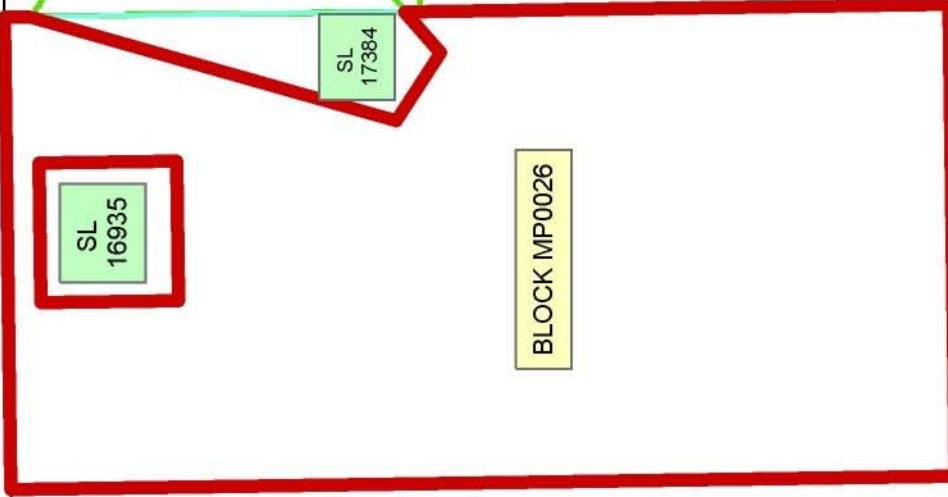
Bidder	Cash Payment	Price/Acre	Rental	Oil	Gas	Other



BLOCK BS0032

PLAQUEMINES PARISH

BLOCK MP0021



BLOCK MP0026

MAIN PASS AREA, REVISED

BLOCK MP0031

BRETON SOUND AREA

BLOCK BS0033

BLOCK BS0048

**TRACT 37120 - Portion of Block 33, Breton Sound Area, Plaquemines Parish, Louisiana**

All of the lands now or formerly constituting the beds and bottoms of all water bodies of every nature and description the title of which vests in the State of Louisiana, together with all islands arising therein and other lands formed by accretion or by reliction, where allowed by law, excepting tax adjudicated lands, and not presently under mineral lease on February 9, 2005, situated in Plaquemines Parish, Louisiana, and more particularly described as follows: Beginning at a point on the South line of Block 33, Breton Sound Area, having Coordinates of X = 2,642,725.00 and Y = 307,580.00; thence West 7,375.00 feet along the South line of said Block 33 to its Southwest corner having Coordinates of X = 2,635,350.00 and Y = 307,580.00; thence North 8,267.00 feet along the West line of said Block 33 to a point, also being the Southwest corner of State Lease No. 18078 having Coordinates of X = 2,635,350.00 and Y = 315,847.00; thence along the boundary of said State Lease No. 18078 the following courses: East 3,766.00 feet, North 2,271.00 feet and North 39 degrees 52 minutes 03 seconds West 844.35 feet to the Northeast corner of said State Lease No. 18078, also being a point on the East line of State Lease No. 17385 having Coordinates of X = 2,638,574.76 and Y = 318,766.06; thence along the boundary of said State Lease No. 17385 the following courses: North 50 degrees 07 minutes 57 seconds East 879.76 feet and North 56 degrees 18 minutes 36 seconds West 4,687.22 feet to the Northwest corner of said State Lease No. 17385, also being a point on the West line of said Block 33 having Coordinates of X = 2,635,350.00 and Y = 321,930.00; thence North 400.00 feet along the West line of said Block 33 to its Northwest corner having Coordinates of X = 2,635,350.00 and Y = 322,330.00; thence East 7,375.00 feet along the North line of said Block 33 to a point having Coordinates of X = 2,642,725.00 and Y = 322,330.00; thence South 14,750.00 feet to the point of beginning, containing approximately **2,086.42 acres**, all as more particularly outlined on a plat on file in the Office of Mineral Resources, Department of Natural Resources. All bearings, distances and coordinates are based on Louisiana Coordinate System of 1927, (North or South Zone), where applicable.

NOTE: The above description of the Tract nominated for lease has been provided and corrected, where required, exclusively by the nomination party. Any mineral lease selected from this Tract and awarded by the Louisiana State Mineral Board shall be without warranty of any kind, either express, implied, or statutory, including, but not limited to, the implied warranties of merchantability and fitness for a particular purpose. Should the mineral lease awarded by the Louisiana State Mineral Board be subsequently modified, cancelled or abrogated due to the existence of conflicting leases, operating agreements, private claims or other future obligations or conditions which may affect all or any portion of the leased Tract, it shall not relieve the Lessee of the obligation to pay any bonus due thereon to the Louisiana State Mineral Board, nor shall the Louisiana State Mineral Board be obligated to refund any consideration

paid by the Lessor prior to such modification, cancellation, or abrogation, including, but not limited to, bonuses, rentals and royalties.

NOTE: The State of Louisiana does hereby reserve, and this lease shall be subject to, the imprescriptible right of surface use in the nature of a servitude in favor of the Department of Natural Resources, including its Offices and Commissions, for the sole purpose of implementing, constructing, servicing and maintaining approved coastal zone management and/or restoration projects. Utilization of any and all rights derived under this lease by the mineral lessee, its agents, successors or assigns, shall not interfere with nor hinder the reasonable surface use by the Department of Natural Resources, its Offices or Commissions, as herein above reserved.

Applicant: A.D. Ventures

Bidder	Cash Payment	Price/Acre	Rental	Oil	Gas	Other



BLOCK BS0032

PLAQUEMINES PARISH

BLOCK MP0021

BRETON SOUND AREA

BLOCK BS0034

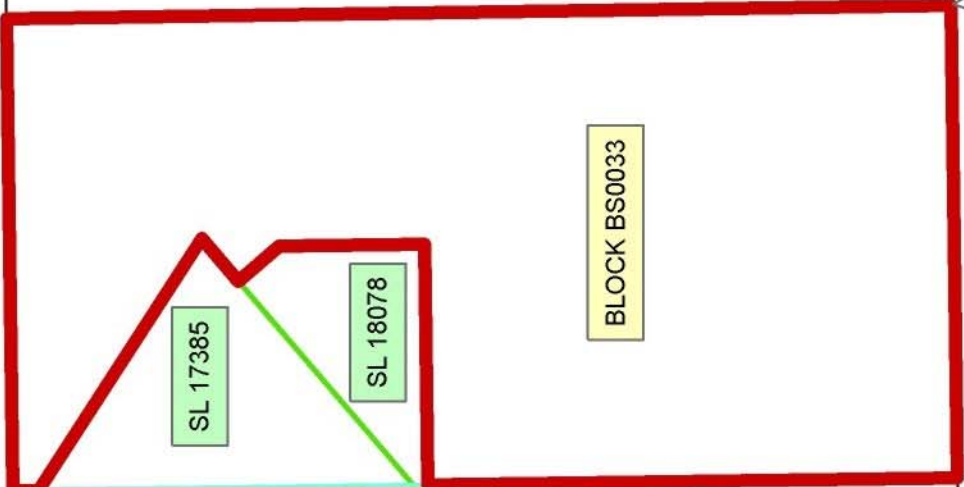
SL 16298

SL 16795

SL 18080

BLOCK BS0048

P.O.B.  
X=2,642,725.00  
Y=307,580.00



BLOCK BS0033

SL 17385

SL 18078

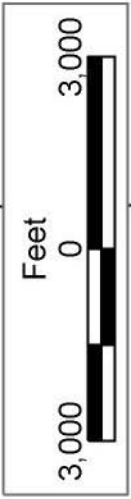
SL 17384

SL 16935

MAIN PASS AREA, REVISED

BLOCK MP0026

BLOCK MP0031



**TRACT 37121 - Portion of Blocks 24, 25, and 33, Main Pass Area, Revised, Plaquemines Parish, Louisiana**

All of the lands now or formerly constituting the beds and bottoms of all water bodies of every nature and description the title of which vests in the State of Louisiana, together with all islands arising therein and other lands formed by accretion or by reliction, where allowed by law, excepting tax adjudicated lands, and not presently under mineral lease on February 9, 2005, situated in Plaquemines Parish, Louisiana, and more particularly described as follows: Beginning at a point within Block 24, Main Pass Area, Revised, having Coordinates of X = 2,596,874.00 and Y = 312,680.00; thence East 8,976.00 feet to a point on the East line of said Block 24 and the West line of Block 25 having Coordinates of X = 2,605,850.00 and Y = 312,680.00; thence South 65 degrees 09 minutes 03 seconds East 10,473.74 feet to a point having Coordinates of X = 2,615,354.00 and Y = 308,278.50; thence West 9,504.00 feet to a point on the West line of said Block 25 and the East line of said Block 24 having Coordinates of X = 2,605,850.00 and Y = 308,278.50; thence South 2,892.31 feet along the East line of said Block 24 and Block 33 to a point having Coordinates of X = 2,605,850.00 and Y = 305,386.19; thence West 8,976.00 feet to a point having Coordinates of X = 2,596,874.00 and Y = 305,386.19; thence North 7,293.81 feet to the point of beginning, containing approximately **1,983.13 acres**, all as more particularly outlined on a plat on file in the Office of Mineral Resources, Department of Natural Resources. All bearings, distances and coordinates are based on Louisiana Coordinate System of 1927, (North or South Zone), where applicable.

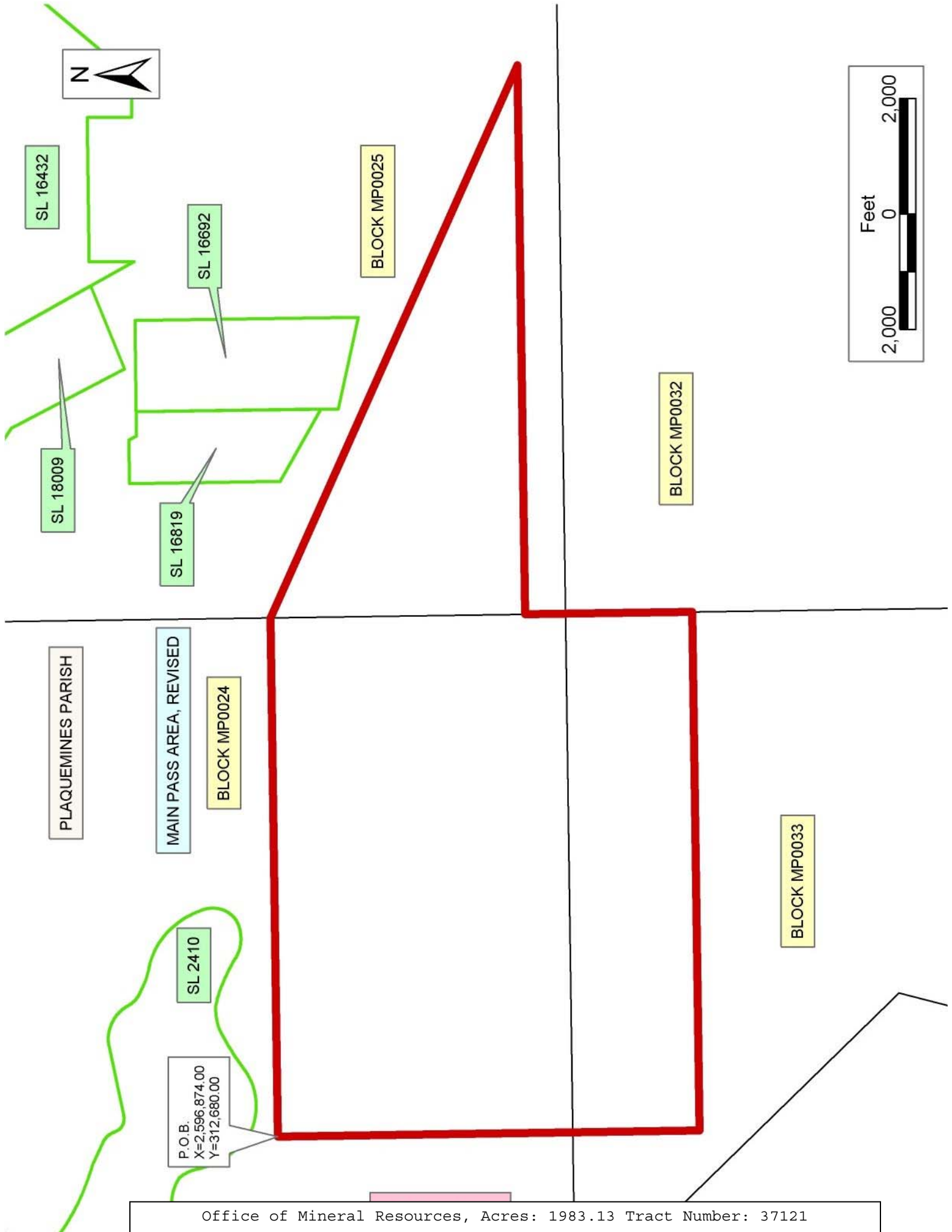
NOTE: The above description of the Tract nominated for lease has been provided and corrected, where required, exclusively by the nomination party. Any mineral lease selected from this Tract and awarded by the Louisiana State Mineral Board shall be without warranty of any kind, either express, implied, or statutory, including, but not limited to, the implied warranties of merchantability and fitness for a particular purpose. Should the mineral lease awarded by the Louisiana State Mineral Board be subsequently modified, cancelled or abrogated due to the existence of conflicting leases, operating agreements, private claims or other future obligations or conditions which may affect all or any portion of the leased Tract, it shall not relieve the Lessee of the obligation to pay any bonus due thereon to the Louisiana State Mineral Board, nor shall the Louisiana State Mineral Board be obligated to refund any consideration paid by the Lessor prior to such modification, cancellation, or abrogation, including, but not limited to, bonuses, rentals and royalties.

NOTE: The State of Louisiana does hereby reserve, and this lease shall be subject to, the imprescriptible right of surface use in the nature of a servitude in favor of the Department of Natural Resources, including its Offices and Commissions, for the sole purpose of implementing, constructing, servicing and maintaining approved coastal zone management and/or restoration projects. Utilization of any and all rights derived under this lease by the mineral lessee, its agents, successors or assigns,

shall not interfere with nor hinder the reasonable surface use by the Department of Natural Resources, its Offices or Commissions, as herein above reserved.

Applicant: Cypress Energy Corporation

Bidder	Cash Payment	Price/Acre	Rental	Oil	Gas	Other



PLAQUEMINES PARISH

MAIN PASS AREA, REVISED

BLOCK MP0024

BLOCK MP0025

BLOCK MP0032

BLOCK MP0033

SL 16432

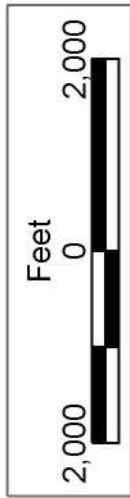
SL 18009

SL 16692

SL 16819

SL 2410

P.O.B.  
X=2,596,874.00  
Y=312,680.00





**TRACT 37122 - Vermilion Parish, Louisiana**

All of the lands now or formerly constituting the beds and bottoms of all water bodies of every nature and description the title of which vests in the State of Louisiana, together with all islands arising therein and other lands formed by accretion or by reliction, where allowed by law, excepting tax adjudicated lands, and not presently under mineral lease on February 9, 2005, situated in Vermilion Parish, Louisiana, and more particularly described as follows: Beginning at a point on the North line of Block 8, Vermilion Area Revised having Coordinates of X = 1,700,680 and Y = 316,390; thence Southwesterly on a straight line to a point having Coordinates of X = 1,696,359 and Y = 315,965; thence Southwesterly on a straight line to a point having Coordinates of X = 1,693,201.54 and Y = 315,985.82; thence North 5,345.03 feet to a point having Coordinates of X = 1,693,201.54 and Y = 321,330.85; thence East 14,066.36 feet to a point on the Southwestern line of State Lease No. 18199 having Coordinates of X = 1,707,267.90 and Y = 321,330.85; thence South 78 degrees 13 minutes 41 seconds East 485.30 feet along said State Lease No. 18199 to its Southeast corner and the Southwest corner of State Lease No. 18198 having Coordinates of X = 1,707,743.00 and Y = 321,231.84; thence South 78 degrees 13 minutes 42 seconds East 3,365.71 feet to the Southeast corner of said State Lease No. 18198 and the Southwest corner of State Lease No. 18180, and a point on the North line of Block 9 having Coordinates of X = 1,711,037.92 and Y = 320,545.19; thence Southwesterly on a straight line to a point having Coordinates of X = 1,709,968 and Y = 319,818; thence Southwesterly on a straight line to a point having Coordinates of X = 1,708,756 and Y = 318,661; thence Southwesterly on a straight line to a point having Coordinates of X = 1,706,790 and Y = 317,870; thence Southwesterly on a straight line to a point having Coordinates of X = 1,706,414.36 and Y = 317,770.27; thence Southwesterly on a straight line to a point having Coordinates of X = 1,703,080 and Y = 316,885; thence Southwesterly to the point of beginning, containing approximately **195 acres**, all as more particularly outlined on a plat on file in the Office of Mineral Resources, Department of Natural Resources. All bearings, distances and coordinates are based on Louisiana Coordinate System of 1927, (North or South Zone), where applicable.

NOTE: The above description of the Tract nominated for lease has been provided and corrected, where required, exclusively by the nomination party. Any mineral lease selected from this Tract and awarded by the Louisiana State Mineral Board shall be without warranty of any kind, either express, implied, or statutory, including, but not limited to, the implied warranties of merchantability and fitness for a particular purpose. Should the mineral lease awarded by the Louisiana State Mineral Board be subsequently modified, cancelled or abrogated due to the existence of conflicting leases, operating agreements, private claims or other future obligations or conditions which may affect all or any portion of the leased Tract, it shall not relieve the Lessee of the obligation to pay any bonus due thereon to the Louisiana State Mineral Board, nor shall the Louisiana State Mineral Board be obligated to refund any consideration

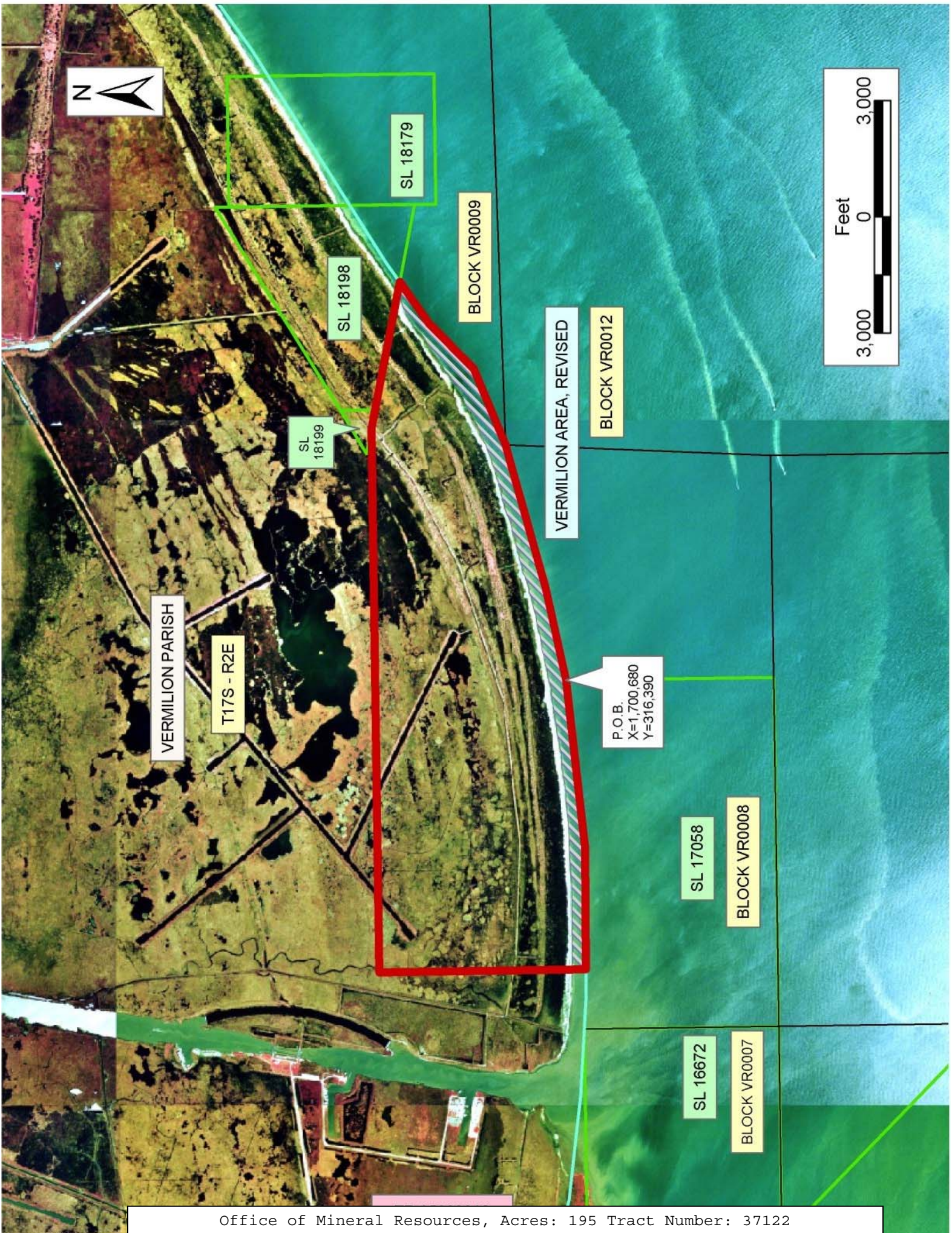
paid by the Lessor prior to such modification, cancellation, or abrogation, including, but not limited to, bonuses, rentals and royalties.

NOTE: The State of Louisiana does hereby reserve, and this lease shall be subject to, the imprescriptible right of surface use in the nature of a servitude in favor of the Department of Natural Resources, including its Offices and Commissions, for the sole purpose of implementing, constructing, servicing and maintaining approved coastal zone management and/or restoration projects. Utilization of any and all rights derived under this lease by the mineral lessee, its agents, successors or assigns, shall not interfere with nor hinder the reasonable surface use by the Department of Natural Resources, its Offices or Commissions, as herein above reserved.

NOTE: The Department of Wildlife and Fisheries has designated certain areas in the coastal waters of the State of Louisiana as Oyster Seed Bed Areas. The exact location of those Seed Bed Areas must be obtained from the Department of Wildlife and Fisheries and any work done under a mineral lease from the State of Louisiana may necessarily be conducted in conformity with the rules and regulations promulgated by the said Department of Wildlife and Fisheries for Oyster Seed Bed Areas.

Applicant: Cypress Energy Corporation

Bidder	Cash Payment	Price/Acre	Rental	Oil	Gas	Other



**TRACT 37123 - Portion of Blocks 25, and 32, Main Pass Area, Revised, Plaquemines Parish, Louisiana**

All of the lands now or formerly constituting the beds and bottoms of all water bodies of every nature and description the title of which vests in the State of Louisiana, together with all islands arising therein and other lands formed by accretion or by reliction, where allowed by law, excepting tax adjudicated lands, and not presently under mineral lease on February 9, 2005, situated in Plaquemines Parish, Louisiana, and more particularly described as follows: Beginning at the Northwest corner of State Lease No. 1958, as amended and a point on the West line of Block 32, Main Pass Area, Revised, having Coordinates of X = 2,605,850.00 and Y = 297,278.50; thence North 11,000.00 feet along the West line of said Block 32 into Block 25 having Coordinates of X = 2,605,850.00 and Y = 308,278.50; thence East 9,504.00 feet to a point having Coordinates of X = 2,615,354.00 and Y = 308,278.24; thence South 11,000.00 feet to a point on the North line of said State Lease No. 1958 having Coordinates of X = 2,615,354.00 and Y = 297,278.50; thence West 9,504.00 feet along the North line of said State Lease No. 1958 to the point of beginning, containing approximately **2,400.00 acres**, all as more particularly outlined on a plat on file in the Office of Mineral Resources, Department of Natural Resources. All bearings, distances and coordinates are based on Louisiana Coordinate System of 1927, (North or South Zone), where applicable.

NOTE: The above description of the Tract nominated for lease has been provided and corrected, where required, exclusively by the nomination party. Any mineral lease selected from this Tract and awarded by the Louisiana State Mineral Board shall be without warranty of any kind, either express, implied, or statutory, including, but not limited to, the implied warranties of merchantability and fitness for a particular purpose. Should the mineral lease awarded by the Louisiana State Mineral Board be subsequently modified, cancelled or abrogated due to the existence of conflicting leases, operating agreements, private claims or other future obligations or conditions which may affect all or any portion of the leased Tract, it shall not relieve the Lessee of the obligation to pay any bonus due thereon to the Louisiana State Mineral Board, nor shall the Louisiana State Mineral Board be obligated to refund any consideration paid by the Lessor prior to such modification, cancellation, or abrogation, including, but not limited to, bonuses, rentals and royalties.

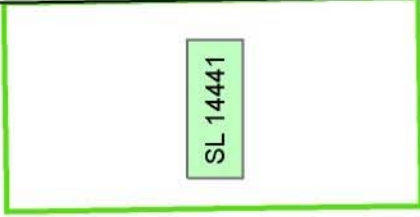
NOTE: The State of Louisiana does hereby reserve, and this lease shall be subject to, the imprescriptible right of surface use in the nature of a servitude in favor of the Department of Natural Resources, including its Offices and Commissions, for the sole purpose of implementing, constructing, servicing and maintaining approved coastal zone management and/or restoration projects. Utilization of any and all rights derived under this lease by the mineral lessee, its agents, successors or assigns, shall not interfere with nor hinder the reasonable surface use by the Department of Natural Resources, its Offices or Commissions, as herein above reserved.

Applicant: Cypress Energy Corporation

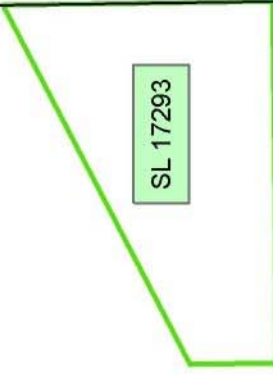
Bidder	Cash Payment	Price/Acre	Rental	Oil	Gas	Other



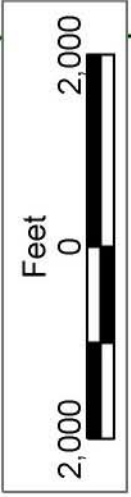
SL 17625



SL 14441



SL 17293



Feet

2,000

0

2,000

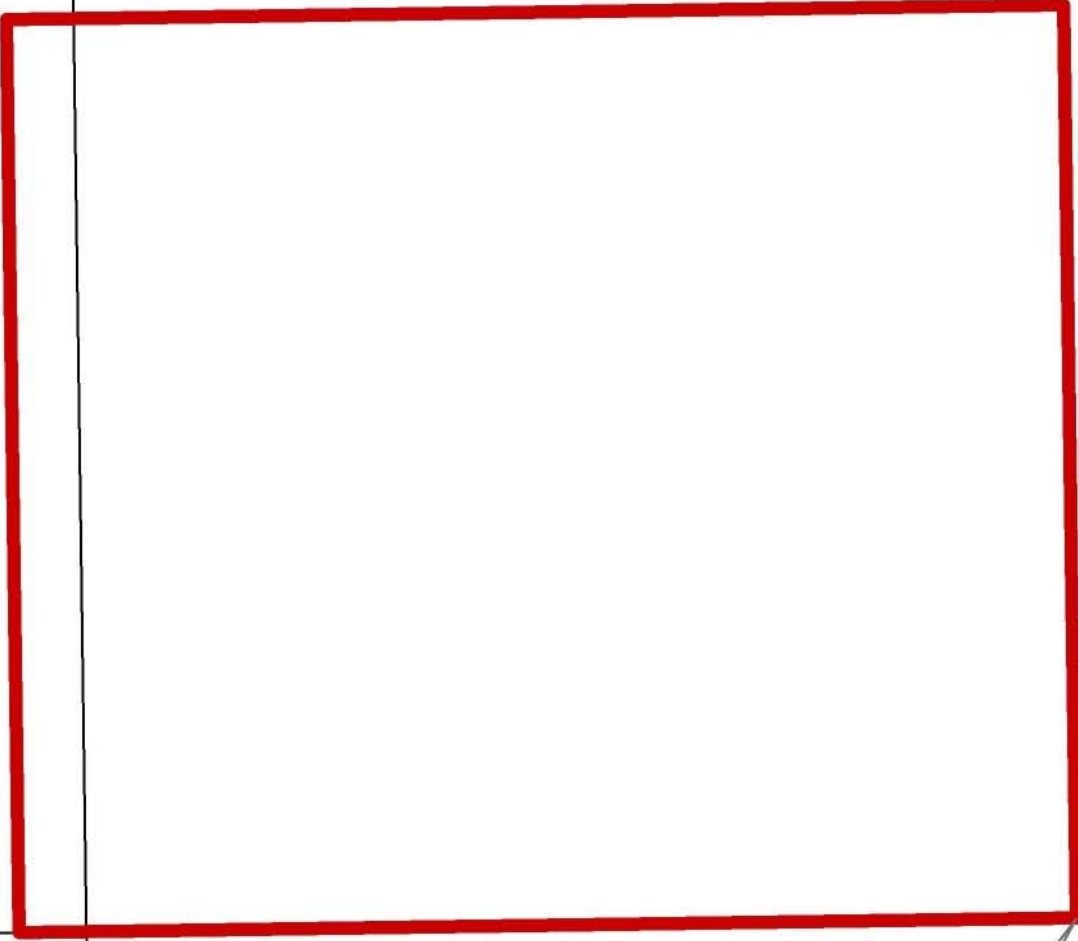
MAIN PASS AREA, REVISED

BLOCK MP0025

PLAQUEMINES PARISH

BLOCK MP0032

SL 1958



BLOCK MP0024

BLOCK MP0033

P.O.B.  
X=2,605,850.00  
Y=297,278.50