

TRACT 37104 - Portion of Block 73, Chandeleur Sound Area, St. Bernard Parish, Louisiana

All of the lands now or formerly constituting the beds and bottoms of all water bodies of every nature and description the title of which vests in the State of Louisiana, together with all islands arising therein and other lands formed by accretion or by reliction, where allowed by law, excepting tax adjudicated lands, and not presently under mineral lease on February 9, 2005, situated in St. Bernard Parish, Louisiana, and more particularly described as follows: Beginning at a point having Coordinates of X = 2,574,718.00 and Y = 390,779.00; thence North 11,736.00 feet to a point having Coordinates of X = 2,574,718.00 and Y = 402,515.00; thence East 9,034.00 feet to a point having Coordinates of X = 2,583,752.00 and Y = 402,515.00; thence South 115.05 feet to the Northwest corner of State Lease No. 18072 having Coordinates of X = 2,583,752.00 and Y = 402,399.95; thence South 1,927.41 feet on the West line of said State Lease No. 18072 to a point on the boundary of State Lease No. 4909, as amended having Coordinates of X = 2,583,752.00 and Y = 400,472.53; thence Northwesterly, Southwesterly and Easterly on the boundary of said State Lease No. 4909 to the Southwest corner of State Lease No. 5452, as amended, having Coordinates of X = 2,576,350.00 and Y = 393,550.14; thence Easterly and Northerly on the South and East lines of said State Lease No. 5452 to its Northeast corner and a point on the boundary of said State Lease No. 4909 having Coordinates of X = 2,577,850.00 and Y = 396,080.00; thence Easterly and Northeasterly on the boundary of said State Lease No. 4909 to a point on the West line of said State Lease No. 18072 having Coordinates of X = 2,583,752.00 and Y = 400,279.89; thence along the boundary of said State Lease No. 18072 the following courses: South 3,081.33 feet and North 89 degrees 45 minutes 21 seconds East 959.01 feet to the Northwest corner of State Lease No. 18073 having Coordinates of X = 2,584,711.00 and Y = 397,202.64; thence South 3,802.64 feet on the West line of said State Lease No. 18073 to its Southwest corner and a point on the North line of State Lease No. 18041, having Coordinates of X = 2,584,711.00 and Y = 393,400.00; thence along the boundary of said State Lease No. 18041 the following courses: West 3,756.81 feet and South 01 degrees 48 minutes 04 seconds East 1,812.85 feet to the Northeast corner of State Lease No. 18056, having Coordinates of X = 2,581,011.17 and Y = 391,588.05; thence South 60 degrees 45 minutes 31 seconds West 1,656.22 feet on the North line of said State Lease No. 18056 to its Northwest corner having Coordinates of X = 2,579,566.00 and Y = 390,779.00; thence West 1,716 feet to a point on the Eastern boundary of State Lease No. 5452, as amended having Coordinates of X = 2,577,850.00 and Y = 390,779.00; thence North 1,047.63 feet to a point on said State Lease No. 5452 having Coordinates of X = 2,577,850.00 and Y = 391,826.63; thence Southwesterly on an arc to the left with a radius of 2,287 feet and a center at X = 2,579,163.16 and Y = 389,954.20 to a point having Coordinates of X = 2,577,693.54 and Y = 391,706.54; thence Southwesterly on an arc to the left with a radius of 3,757 feet and a center at X = 2,579,976.73 and Y = 388,722.88 to a point having Coordinates of X = 2,577,541.90 and Y = 391,584.11; thence Southwesterly on an arc to the left with a radius of 1,002 feet and a

center at X = 2,578,512.39 and Y = 391,334.83 to a point having Coordinates of X = 2,577,536.87 and Y = 391,563.65; thence Southwesterly on an arc to the left with a radius of 777 feet and a center at X = 2,578,087.28 and Y = 391,015.22 to a point having Coordinates of X = 2,577,347.06 and Y = 390,779.00; thence West 2,629.06 feet to the point of beginning, **LESS AND EXCEPT** that portion of State Lease No. 4909, as amended, that may lie within the above described tract, containing approximately **650 acres**, all as more particularly outlined on a plat on file in the Office of Mineral Resources, Department of Natural Resources. All bearings, distances and coordinates are based on Louisiana Coordinate System of 1927, (North or South Zone), where applicable.

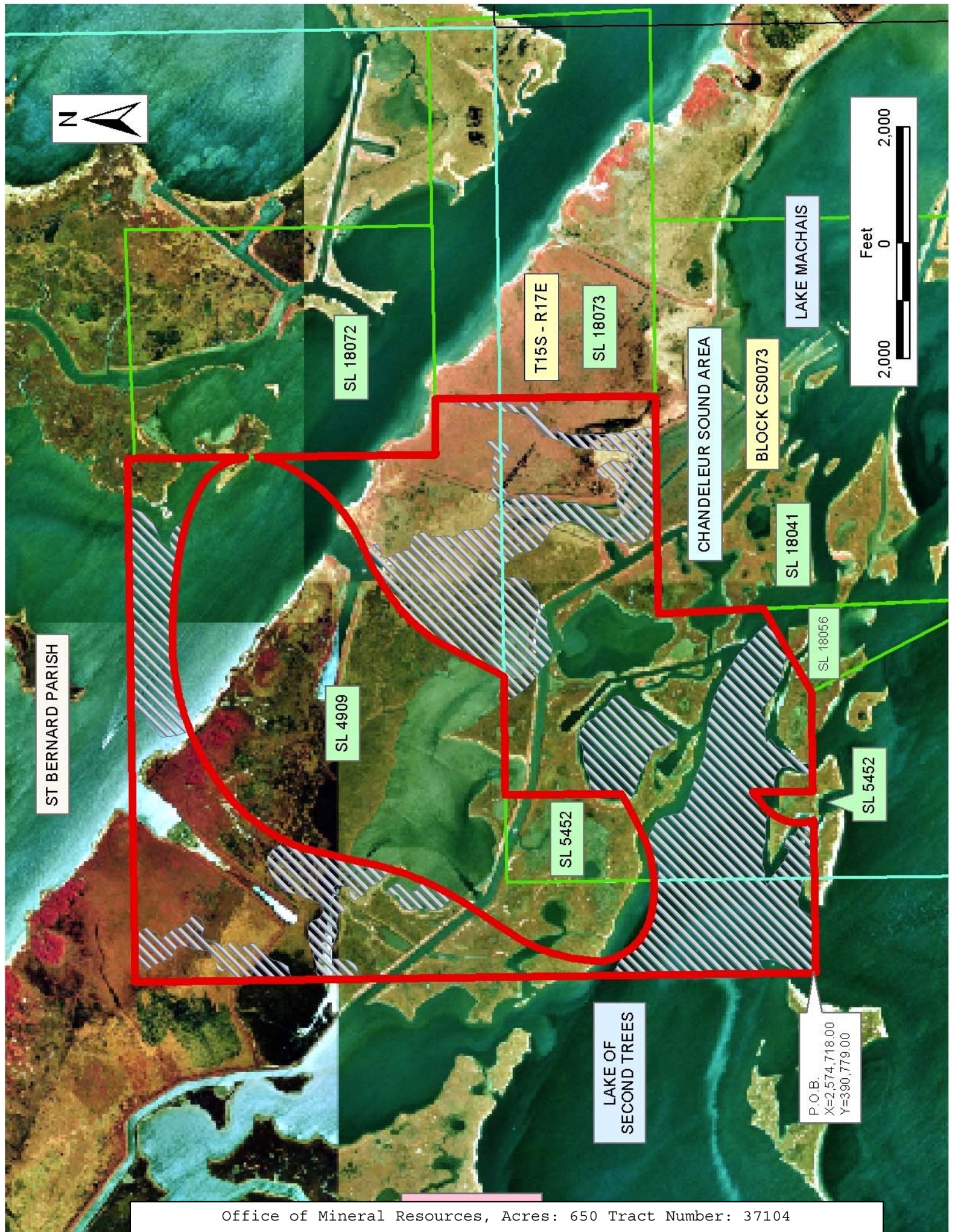
NOTE: The above description of the Tract nominated for lease has been provided and corrected, where required, exclusively by the nomination party. Any mineral lease selected from this Tract and awarded by the Louisiana State Mineral Board shall be without warranty of any kind, either express, implied, or statutory, including, but not limited to, the implied warranties of merchantability and fitness for a particular purpose. Should the mineral lease awarded by the Louisiana State Mineral Board be subsequently modified, cancelled or abrogated due to the existence of conflicting leases, operating agreements, private claims or other future obligations or conditions which may affect all or any portion of the leased Tract, it shall not relieve the Lessee of the obligation to pay any bonus due thereon to the Louisiana State Mineral Board, nor shall the Louisiana State Mineral Board be obligated to refund any consideration paid by the Lessor prior to such modification, cancellation, or abrogation, including, but not limited to, bonuses, rentals and royalties.

NOTE: The State of Louisiana does hereby reserve, and this lease shall be subject to, the imprescriptible right of surface use in the nature of a servitude in favor of the Department of Natural Resources, including its Offices and Commissions, for the sole purpose of implementing, constructing, servicing and maintaining approved coastal zone management and/or restoration projects. Utilization of any and all rights derived under this lease by the mineral lessee, its agents, successors or assigns, shall not interfere with nor hinder the reasonable surface use by the Department of Natural Resources, its Offices or Commissions, as herein above reserved.

NOTE: The Department of Wildlife and Fisheries has designated certain areas in the coastal waters of the State of Louisiana as Oyster Seed Bed Areas. The exact location of those Seed Bed Areas must be obtained from the Department of Wildlife and Fisheries and any work done under a mineral lease from the State of Louisiana may necessarily be conducted in conformity with the rules and regulations promulgated by the said Department of Wildlife and Fisheries for Oyster Seed Bed Areas.

Applicant: Kare-Sue Energy, Inc.

Bidder	Cash Payment	Price/Acre	Rental	Oil	Gas	Other



ST BERNARD PARISH

SL 18072

T15S - R17E

SL 18073

CHANDELEUR SOUND AREA

BLOCK CS0073

LAKE MACHAIS

SL 18041

SL 18056

SL 4909

SL 5452

SL 5452

LAKE OF
SECOND TREES

P.O.B.
X=2,574,718.00
Y=390,779.00



TRACT 37105 - Portion of Block 47, Chandeleur Sound Area, St. Bernard Parish, Louisiana

All of the lands now or formerly constituting the beds and bottoms of all water bodies of every nature and description the title of which vests in the State of Louisiana, together with all islands arising therein and other lands formed by accretion or by reliction, where allowed by law, excepting tax adjudicated lands, and not presently under mineral lease on February 9, 2005, situated in St. Bernard Parish, Louisiana, and more particularly described as follows: Beginning at a point within Block 47, Chandeleur Sound Area, also being the Southeast corner of State Lease No. 18186 having Coordinates of X = 2,594,877.51 and Y = 399,785.00; thence South 3,705.00 feet to a point on the South line of said Block 47, having Coordinates of X = 2,594,877.51 and Y = 396,080.00; thence West 3,597.49 feet on the South line of said Block 47 to a point on the East line of State Lease No. 18073 having Coordinates of X = 2,591,280.02 and Y = 396,080.00; thence along the boundary of said State Lease No. 18073 the following courses: North 02 degrees 02 minutes 40 seconds West 1,151.18 feet and South 89 degrees 45 minutes 21 seconds West 138.95 feet to a point on the West line of said Block 47 having Coordinates of X = 2,591,100.00 and Y = 397,229.86; thence South 89 degrees 45 minutes 21 seconds West 3,400.03 feet on the North line of said State Lease No. 18073 to the Southeast corner of State Lease No. 18072 having Coordinates of X = 2,587,700.00 and Y = 397,215.38; thence North 1,114.72 feet on the East line of said State Lease No. 18072 to the Southwest corner of State Lease No. 18185 having Coordinates of X = 2,587,700.00 and Y = 398,330.10; thence East 3,400.00 feet on the South line of said State Lease No. 18185 to its Southeast corner and a point on the West line of said Block 47 having Coordinates of X = 2,591,100.00 and Y = 398,330.10; thence North 1,454.90 feet on the East line of said State Lease No. 18185 and the West line of said Block 47 to the Southwest corner of said State Lease No. 18186 having Coordinates of X = 2,591,100.00 and Y = 399,785.00; thence East 3,777.51 feet on the South line of said State Lease No. 18186 to the point of beginning, containing approximately **238 acres**, all as more particularly outlined on a plat on file in the Office of Mineral Resources, Department of Natural Resources. All bearings, distances and coordinates are based on Louisiana Coordinate System of 1927, (North or South Zone), where applicable.

NOTE: The above description of the Tract nominated for lease has been provided and corrected, where required, exclusively by the nomination party. Any mineral lease selected from this Tract and awarded by the Louisiana State Mineral Board shall be without warranty of any kind, either express, implied, or statutory, including, but not limited to, the implied warranties of merchantability and fitness for a particular purpose. Should the mineral lease awarded by the Louisiana State Mineral Board be subsequently modified, cancelled or abrogated due to the existence of conflicting leases, operating agreements, private claims or other future obligations or conditions which may affect all or any portion of the leased Tract, it shall not relieve the Lessee of the obligation to

pay any bonus due thereon to the Louisiana State Mineral Board, nor shall the Louisiana State Mineral Board be obligated to refund any consideration paid by the Lessor prior to such modification, cancellation, or abrogation, including, but not limited to, bonuses, rentals and royalties.

NOTE: The State of Louisiana does hereby reserve, and this lease shall be subject to, the imprescriptible right of surface use in the nature of a servitude in favor of the Department of Natural Resources, including its Offices and Commissions, for the sole purpose of implementing, constructing, servicing and maintaining approved coastal zone management and/or restoration projects. Utilization of any and all rights derived under this lease by the mineral lessee, its agents, successors or assigns, shall not interfere with nor hinder the reasonable surface use by the Department of Natural Resources, its Offices or Commissions, as herein above reserved.

NOTE: The Department of Wildlife and Fisheries has designated certain areas in the coastal waters of the State of Louisiana as Oyster Seed Bed Areas. The exact location of those Seed Bed Areas must be obtained from the Department of Wildlife and Fisheries and any work done under a mineral lease from the State of Louisiana may necessarily be conducted in conformity with the rules and regulations promulgated by the said Department of Wildlife and Fisheries for Oyster Seed Bed Areas.

Applicant: Kare-Sue Energy, Inc.

Bidder	Cash Payment	Price/Acre	Rental	Oil	Gas	Other



POB
X=2,594,877.51
Y=399,785.00



BLOCK CS0047

SL 18186

SL 15485



CHANDELEUR SOUND AREA

BLOCK CS0072

ST BERNARD PARISH

LAKE ATHANSIO

SL 18185

T15S - R17E

MISSISSIPPI RIVER
GULF OUTLET
CANAL

BLOCK CS0073

SL 18073

SL 18072

TRACT 37106 - Portion of Block 73, Chandeleur Sound Area, St. Bernard Parish, Louisiana

All of the lands now or formerly constituting the beds and bottoms of all water bodies of every nature and description the title of which vests in the State of Louisiana, together with all islands arising therein and other lands formed by accretion or by reliction, where allowed by law, excepting tax adjudicated lands, and not presently under mineral lease on February 9, 2005, situated in St. Bernard Parish, Louisiana, and more particularly described as follows: Beginning at a point having Coordinates of X = 2,574,718.00 and Y = 390,779.00; thence East 2,629.06 feet to a point on the West boundary of the Southern portion of State Lease No. 5452, as amended, having Coordinates of X = 2,577,347.06 and Y = 390,779.00; thence along the West and East boundaries of said State Lease No. 5452 the following: Southeasterly along an arc with a radius of 777.00 feet and a center at X = 2,578,087.28 and Y = 391,015.22 to a point having Coordinates of X = 2,577,600.00 and Y = 390,410.00, Southeasterly along an arc having a radius of 5,002.00 feet and a center at X = 2,580,411.83 and Y = 394,546.86 to a point having Coordinates of X = 2,577,850.00 and Y = 390,250.70 and North 528.30 feet to a point having Coordinates of X = 2,577,850.00 and Y = 390,779.00; thence East 1,716.00 feet to the Northwest corner of State Lease No. 18051 located within Block 73, Chandeleur Sound Area, having Coordinates of X = 2,579,566.00 and Y = 390,779.00; thence South 26 degrees 37 minutes 52 seconds East 3,500.32 feet on the West line of said State Lease No. 18056 to its Southern corner and a point on the West boundary of State Lease No. 18041 having Coordinates of X = 2,581,135.00 and Y = 387,650.03; thence along the boundary of said State Lease No. 18041 the following courses: South 01 degrees 48 minutes 04 seconds East 1,620.83 feet and East 2,875.56 feet to the Northwest corner of State Lease No. 18042 having Coordinates of X = 2,584,061.50 and Y = 386,030.00; thence South 1,708.58 feet on the West line of said State Lease No. 18042 to its Southwest corner and a point on the boundary of State Lease No. 15959, as amended having Coordinates of X = 2,584,061.50 and Y = 384,321.41; thence along the boundary of said State Lease No. 15959 the following courses: South 68 degrees 49 minutes 42 seconds West 745.13 feet, South 74 degrees 53 minutes 16 seconds West 604.96 feet, South 81 degrees 43 minutes 56 seconds West 605.36 feet, and South 81 degrees 46 minutes 12 seconds West 249.76 feet to the Northeast corner of State Lease No. 17109, as amended having Coordinates of X = 2,581,936.36 and Y = 383,771.78; thence along the boundary of said State Lease No. 17109 the following courses: South 81 degrees 46 minutes 12 seconds West 748.94 feet and South 76 degrees 24 minutes 57 seconds East 489.45 feet to its Southeast corner and a point on the boundary of said State Lease No. 15959 having Coordinates of X = 2,581,670.89 and Y = 383,549.61; thence along the boundary of said State Lease No. 15959 the following courses: South 76 degrees 24 minutes 57 seconds East 501.55 feet, South 73 degrees 26 minutes 52 seconds East 299.06 feet, South 61 degrees 47 minutes 44 seconds East 108.65 feet, South 37 degrees 16 minutes 32 seconds East 105.11 feet, South 19 degrees 12 minutes 46 seconds East 116.02 feet, South 08 degrees 17 minutes 28 seconds East 100.14 feet, South 08 degrees

34 minutes 50 seconds West 212.80 feet, South 15 degrees 31 minutes 20 seconds West 1,012.40 feet, and South 11 degrees 08 minutes 02 seconds West 496.42 feet to a point on the North line of State Lease No. 17619 having Coordinates of X = 2,582,258.57 and Y = 381,330.00; thence West 1,608.57 feet on the North line of said State Lease No. 17619 to its Northwest corner having Coordinates of X = 2,580,650.00 and Y = 381,330.00; thence West 5,932.00 feet to a point having Coordinates of X = 2,574,718.00 and Y = 381,330.00; thence North 9,449.00 feet to the point of beginning, containing approximately **1,467 acres**, all as more particularly outlined on a plat on file in the Office of Mineral Resources, Department of Natural Resources. All bearings, distances and coordinates are based on Louisiana Coordinate System of 1927, (North or South Zone), where applicable.

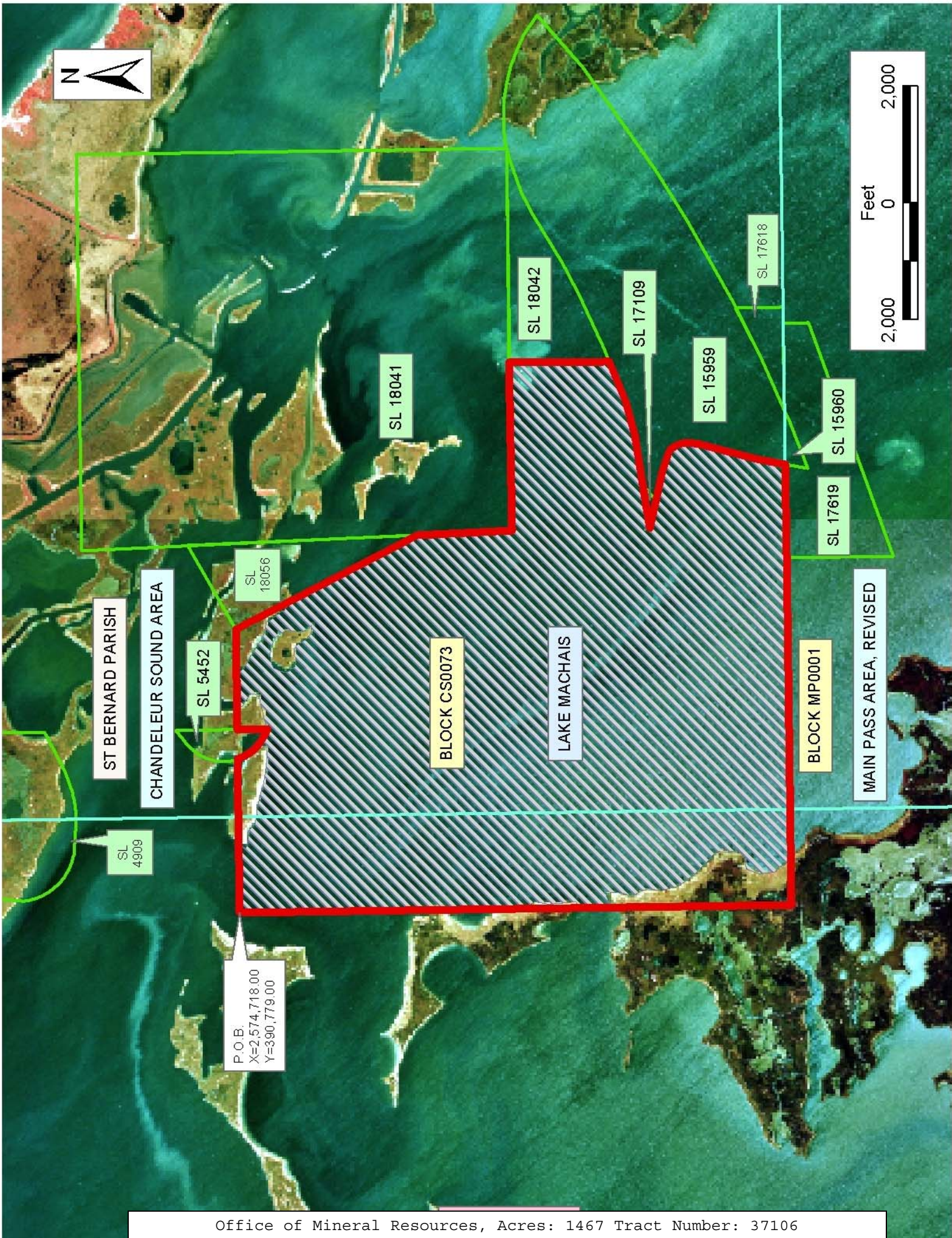
NOTE: The above description of the Tract nominated for lease has been provided and corrected, where required, exclusively by the nomination party. Any mineral lease selected from this Tract and awarded by the Louisiana State Mineral Board shall be without warranty of any kind, either express, implied, or statutory, including, but not limited to, the implied warranties of merchantability and fitness for a particular purpose. Should the mineral lease awarded by the Louisiana State Mineral Board be subsequently modified, cancelled or abrogated due to the existence of conflicting leases, operating agreements, private claims or other future obligations or conditions which may affect all or any portion of the leased Tract, it shall not relieve the Lessee of the obligation to pay any bonus due thereon to the Louisiana State Mineral Board, nor shall the Louisiana State Mineral Board be obligated to refund any consideration paid by the Lessor prior to such modification, cancellation, or abrogation, including, but not limited to, bonuses, rentals and royalties.

NOTE: The State of Louisiana does hereby reserve, and this lease shall be subject to, the imprescriptible right of surface use in the nature of a servitude in favor of the Department of Natural Resources, including its Offices and Commissions, for the sole purpose of implementing, constructing, servicing and maintaining approved coastal zone management and/or restoration projects. Utilization of any and all rights derived under this lease by the mineral lessee, its agents, successors or assigns, shall not interfere with nor hinder the reasonable surface use by the Department of Natural Resources, its Offices or Commissions, as herein above reserved.

NOTE: The Department of Wildlife and Fisheries has designated certain areas in the coastal waters of the State of Louisiana as Oyster Seed Bed Areas. The exact location of those Seed Bed Areas must be obtained from the Department of Wildlife and Fisheries and any work done under a mineral lease from the State of Louisiana may necessarily be conducted in conformity with the rules and regulations promulgated by the said Department of Wildlife and Fisheries for Oyster Seed Bed Areas.

Applicant: Kare-Sue Energy, Inc.

Bidder	Cash Payment	Price/Acre	Rental	Oil	Gas	Other



TRACT 37107 - St. Bernard Parish, Louisiana

All of the lands now or formerly constituting the beds and bottoms of all water bodies of every nature and description the title of which vests in the State of Louisiana, together with all islands arising therein and other lands formed by accretion or by reliction, where allowed by law, excepting tax adjudicated lands, and not presently under mineral lease on February 9, 2005, situated in St. Bernard Parish, Louisiana, and more particularly described as follows: Beginning at a point having Coordinates of X = 2,570,719.27 and Y = 375,516.08; thence South 87 degrees 04 minutes 34 seconds West 5,262.19 feet to a point having Coordinates of X = 2,565,463.93 and Y = 375,247.66; thence South 87 degrees 44 minutes 03 seconds West 5,293.15 feet to a point having Coordinates of X = 2,560,174.92 and Y = 375,038.40; thence North 01 degrees 19 minutes 25 seconds West 5,282.18 feet to a point having Coordinates of X = 2,560,052.90 and Y = 380,319.17; thence North 00 degrees 50 minutes 41 seconds West 5,434.44 feet to a point having Coordinates of X = 2,559,972.78 and Y = 385,753.02; thence North 87 degrees 14 minutes 09 seconds East 5,348.53 feet to a point having Coordinates of X = 2,565,315.09 and Y = 386,010.96; thence North 86 degrees 35 minutes 03 seconds East 5,255.02 feet to a point having Coordinates of X = 2,570,560.77 and Y = 386,324.06; thence South 00 degrees 40 minutes 42 seconds East 5,720.93 feet to a point having Coordinates of X = 2,570,628.50 and Y = 380,603.53; thence South 01 degrees 01 minutes 20 seconds East 5,088.26 feet to the point of beginning, **LESS AND EXCEPT** that portion of State Lease No. 17919 that lies within the above described tract, and being more particularly described as follows: beginning at a point having Coordinates of X = 2,565,352.79 and Y = 380,426.29, thence South 01 degrees 55 minutes 27 seconds East 4,224.53 feet to a point having Coordinates of X = 2,565,494.63 and Y = 376,204.15, thence South 88 degrees 04 minutes 33 seconds West 4,204.00 feet to a point having Coordinates of X = 2,561,293.00 and Y = 376,063.00, thence North 01 degrees 55 minutes 29 seconds West 4,224.53 feet to a point having Coordinates of X = 2,561,151.16 and Y = 380,285.14, and North 88 degrees 04 minutes 33 seconds East 4,204.00 feet to the point of beginning, containing approximately **2,110 acres**, all as more particularly outlined on a plat on file in the Office of Mineral Resources, Department of Natural Resources. All bearings, distances and coordinates are based on Louisiana Coordinate System of 1927, (North or South Zone), where applicable.

NOTE: The above description of the Tract nominated for lease has been provided and corrected, where required, exclusively by the nomination party. Any mineral lease selected from this Tract and awarded by the Louisiana State Mineral Board shall be without warranty of any kind, either express, implied, or statutory, including, but not limited to, the implied warranties of merchantability and fitness for a particular purpose. Should the mineral lease awarded by the Louisiana State Mineral Board be subsequently modified, cancelled or abrogated due to the existence of conflicting leases, operating agreements, private claims or other future obligations or conditions which may affect all or any portion

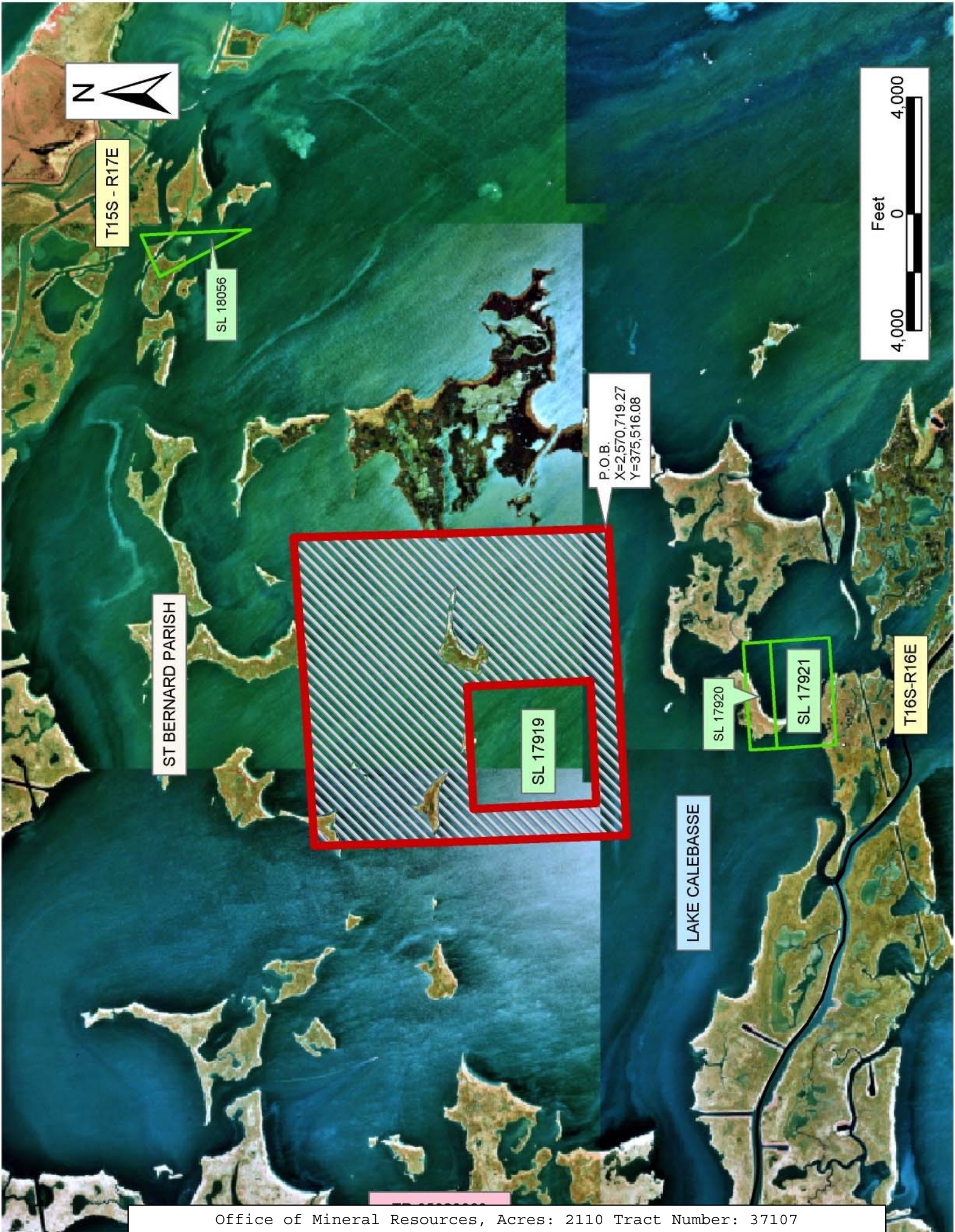
of the leased Tract, it shall not relieve the Lessee of the obligation to pay any bonus due thereon to the Louisiana State Mineral Board, nor shall the Louisiana State Mineral Board be obligated to refund any consideration paid by the Lessor prior to such modification, cancellation, or abrogation, including, but not limited to, bonuses, rentals and royalties.

NOTE: The State of Louisiana does hereby reserve, and this lease shall be subject to, the imprescriptible right of surface use in the nature of a servitude in favor of the Department of Natural Resources, including its Offices and Commissions, for the sole purpose of implementing, constructing, servicing and maintaining approved coastal zone management and/or restoration projects. Utilization of any and all rights derived under this lease by the mineral lessee, its agents, successors or assigns, shall not interfere with nor hinder the reasonable surface use by the Department of Natural Resources, its Offices or Commissions, as herein above reserved.

NOTE: The Department of Wildlife and Fisheries has designated certain areas in the coastal waters of the State of Louisiana as Oyster Seed Bed Areas. The exact location of those Seed Bed Areas must be obtained from the Department of Wildlife and Fisheries and any work done under a mineral lease from the State of Louisiana may necessarily be conducted in conformity with the rules and regulations promulgated by the said Department of Wildlife and Fisheries for Oyster Seed Bed Areas.

Applicant: Kare-Sue Energy, Inc.

Bidder	Cash Payment	Price/Acre	Rental	Oil	Gas	Other



TRACT 37108 - Plaquemines and St. Bernard Parishes, Louisiana

All of the lands now or formerly constituting the beds and bottoms of all water bodies of every nature and description the title of which vests in the State of Louisiana, together with all islands arising therein and other lands formed by accretion or by reliction, where allowed by law, excepting tax adjudicated lands, and not presently under mineral lease on February 9, 2005, situated in Plaquemines and St. Bernard Parishes, Louisiana, and more particularly described as follows: Beginning at a point having Coordinates of X = 2,570,719.27 and Y = 375,516.08; thence South 00 degrees 52 minutes 02 seconds East 5,280.48 feet to a point having Coordinates of X = 2,570,799.19 and Y = 370,236.20; thence South 00 degrees 48 minutes 58 seconds East 5,224.52 feet to a point having Coordinates of X = 2,570,873.60 and Y = 365,012.21; thence South 88 degrees 56 minutes 26 seconds West 5,114.60 feet to a point having Coordinates of X = 2,565,759.87 and Y = 364,917.65; thence South 88 degrees 32 minutes 07 seconds West 5,197.16 feet to a point having Coordinates of X = 2,560,564.41 and Y = 364,784.79; thence North 02 degrees 50 minutes 31 seconds West 4,915.46 feet to a point having Coordinates of X = 2,560,320.70 and Y = 369,694.20; thence North 01 degrees 33 minutes 45 seconds West 5,346.19 feet to a point having Coordinates of X = 2,560,174.92 and Y = 375,038.40; thence North 87 degrees 44 minutes 03 seconds East 5,293.15 feet to a point having Coordinates of X = 2,565,463.93 and Y = 375,247.66; thence North 87 degrees 04 minutes 34 seconds East 5,262.19 feet to the point of beginning, **LESS AND EXCEPT** all of State Lease No. 17920 and State Lease No. 17921, described as follows: beginning at a point having Coordinates of X = 2,566,707.54 and Y = 370,949.83, thence South 02 degrees 55 minutes 20 seconds East 2,953.00, thence South 87 degrees 04 minutes 40 seconds West 3,666.00 feet, thence North 02 degrees 55 minutes 20 seconds West 2,953.00 feet, and North 87 degrees 04 minutes 39 seconds West 3,666.00 feet to the point of beginning, and State Lease No. 195, as amended, that may lie within the above described tract, containing approximately **1,384 acres**, all as more particularly outlined on a plat on file in the Office of Mineral Resources, Department of Natural Resources. All bearings, distances and coordinates are based on Louisiana Coordinate System of 1927, (North or South Zone), where applicable.

NOTE: The above description of the Tract nominated for lease has been provided and corrected, where required, exclusively by the nomination party. Any mineral lease selected from this Tract and awarded by the Louisiana State Mineral Board shall be without warranty of any kind, either express, implied, or statutory, including, but not limited to, the implied warranties of merchantability and fitness for a particular purpose. Should the mineral lease awarded by the Louisiana State Mineral Board be subsequently modified, cancelled or abrogated due to the existence of conflicting leases, operating agreements, private claims or other future obligations or conditions which may affect all or any portion of the leased Tract, it shall not relieve the Lessee of the obligation to pay any bonus due thereon to the Louisiana State Mineral Board, nor shall

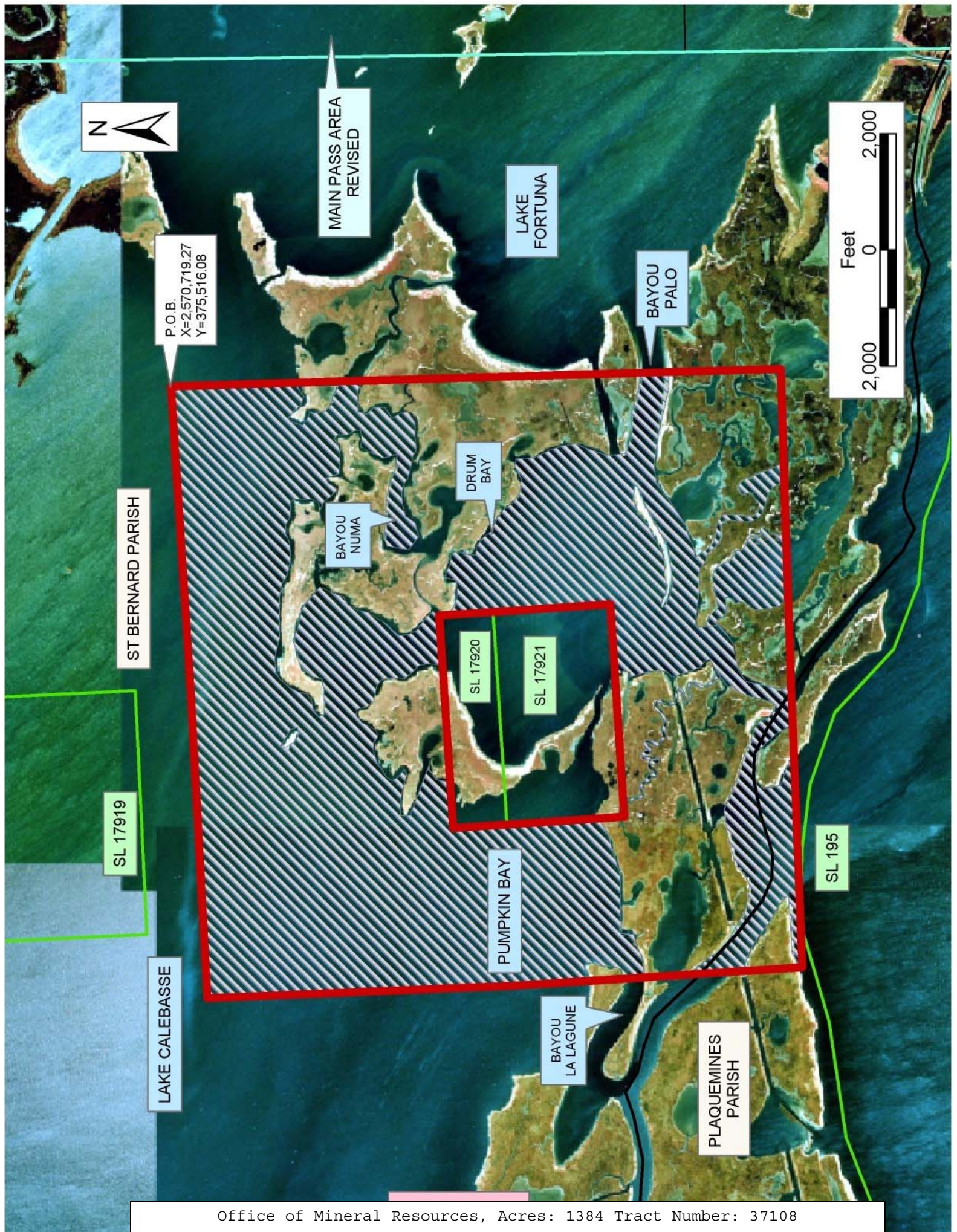
the Louisiana State Mineral Board be obligated to refund any consideration paid by the Lessor prior to such modification, cancellation, or abrogation, including, but not limited to, bonuses, rentals and royalties.

NOTE: The State of Louisiana does hereby reserve, and this lease shall be subject to, the imprescriptible right of surface use in the nature of a servitude in favor of the Department of Natural Resources, including its Offices and Commissions, for the sole purpose of implementing, constructing, servicing and maintaining approved coastal zone management and/or restoration projects. Utilization of any and all rights derived under this lease by the mineral lessee, its agents, successors or assigns, shall not interfere with nor hinder the reasonable surface use by the Department of Natural Resources, its Offices or Commissions, as herein above reserved.

NOTE: The Department of Wildlife and Fisheries has designated certain areas in the coastal waters of the State of Louisiana as Oyster Seed Bed Areas. The exact location of those Seed Bed Areas must be obtained from the Department of Wildlife and Fisheries and any work done under a mineral lease from the State of Louisiana may necessarily be conducted in conformity with the rules and regulations promulgated by the said Department of Wildlife and Fisheries for Oyster Seed Bed Areas.

Applicant: Kare-Sue Energy, Inc.

Bidder	Cash Payment	Price/Acre	Rental	Oil	Gas	Other



P.O.B.
X=2,570,719.27
Y=375,516.08

MAIN PASS AREA
REVISED

LAKE
FORTUNA

BAYOU
PALO



ST BERNARD PARISH

BAYOU
NUMA

DRUM
BAY

SL 17920

SL 17921

SL 17919

PUMPKIN BAY

SL 195

LAKE CALEBASSE

BAYOU
LA LAGUNE

PLAQUEMINES
PARISH

TRACT 37109 - Lafourche and St. Charles Parishes, Louisiana

All of the lands now or formerly constituting the beds and bottoms of all water bodies of every nature and description the title of which vests in the State of Louisiana, together with all islands arising therein and other lands formed by accretion or by reliction, where allowed by law, excepting tax adjudicated lands, and not presently under mineral lease on February 9, 2005, situated in Lafourche and St. Charles Parishes, Louisiana, and more particularly described as follows: Beginning at a point having Coordinates of X = 2,331,910.00 and Y = 374,442.00; thence East 9,482.00 feet to a point having Coordinates of X = 2,341,392.00 and Y = 374,442.00; thence South 5,000.00 feet to a point having Coordinates of X = 2,341,392.00 and Y = 369,442.00; thence East 600.00 feet to a point having Coordinates of X = 2,341,992.00 and Y = 369,442.00; thence South 6,200.00 feet to a point having Coordinates of X = 2,341,992.00 and Y = 363,242.00; thence West 10,082.00 feet to a point having Coordinates of X = 2,331,910.00 and Y = 363,242.00; thence North 11,200.00 feet to the point of beginning, containing approximately **2,497 acres**, all as more particularly outlined on a plat on file in the Office of Mineral Resources, Department of Natural Resources. All bearings, distances and coordinates are based on Louisiana Coordinate System of 1927, (North or South Zone), where applicable.

NOTE: The above description of the Tract nominated for lease has been provided and corrected, where required, exclusively by the nomination party. Any mineral lease selected from this Tract and awarded by the Louisiana State Mineral Board shall be without warranty of any kind, either express, implied, or statutory, including, but not limited to, the implied warranties of merchantability and fitness for a particular purpose. Should the mineral lease awarded by the Louisiana State Mineral Board be subsequently modified, cancelled or abrogated due to the existence of conflicting leases, operating agreements, private claims or other future obligations or conditions which may affect all or any portion of the leased Tract, it shall not relieve the Lessee of the obligation to pay any bonus due thereon to the Louisiana State Mineral Board, nor shall the Louisiana State Mineral Board be obligated to refund any consideration paid by the Lessor prior to such modification, cancellation, or abrogation, including, but not limited to, bonuses, rentals and royalties.

NOTE: The State of Louisiana does hereby reserve, and this lease shall be subject to, the imprescriptible right of surface use in the nature of a servitude in favor of the Department of Natural Resources, including its Offices and Commissions, for the sole purpose of implementing, constructing, servicing and maintaining approved coastal zone management and/or restoration projects. Utilization of any and all rights derived under this lease by the mineral lessee, its agents, successors or assigns, shall not interfere with nor hinder the reasonable surface use by the Department of Natural Resources, its Offices or Commissions, as herein above reserved.

Applicant: Red Oak Resources

Bidder	Cash Payment	Price/Acre	Rental	Oil	Gas	Other



P.O.B.
X=2,331,910.00
Y=374,442.00

SL 347

T16S - R22E

T16S - R21E

JEFFERSON
PARISH

LAKE SALVADOR

ST CHARLES
PARISH

LAFOURCHE
PARISH

CATAHOULA
BAY



TRACT 37110 - Jefferson, Lafourche and St. Charles Parishes, Louisiana

All of the lands now or formerly constituting the beds and bottoms of all water bodies of every nature and description the title of which vests in the State of Louisiana, together with all islands arising therein and other lands formed by accretion or by reliction, where allowed by law, excepting tax adjudicated lands, and not presently under mineral lease on February 9, 2005, situated in Jefferson, Lafourche and St. Charles Parishes, Louisiana, and more particularly described as follows: Beginning at a point having Coordinates of X = 2,352,456.00 and Y = 374,442.00; thence South 11,200.00 feet to a point having Coordinates of X = 2,352,456.00 and Y = 363,242.00; thence West 10,464.00 feet to a point having Coordinates of X = 2,341,992.00 and Y = 363,242.00; thence North 6,200.00 feet to a point having Coordinates of X = 2,341,992.00 and Y = 369,442.00; thence West 600.00 feet to a point having Coordinates of X = 2,341,392.00 and Y = 369,442.00; thence North 5,000.00 feet to a point having Coordinates of X = 2,341,392.00 and Y = 374,442.00; thence East 11,064.00 feet to the point of beginning, containing approximately **2,406 acres**, all as more particularly outlined on a plat on file in the Office of Mineral Resources, Department of Natural Resources. All bearings, distances and coordinates are based on Louisiana Coordinate System of 1927, (North or South Zone), where applicable.

NOTE: The above description of the Tract nominated for lease has been provided and corrected, where required, exclusively by the nomination party. Any mineral lease selected from this Tract and awarded by the Louisiana State Mineral Board shall be without warranty of any kind, either express, implied, or statutory, including, but not limited to, the implied warranties of merchantability and fitness for a particular purpose. Should the mineral lease awarded by the Louisiana State Mineral Board be subsequently modified, cancelled or abrogated due to the existence of conflicting leases, operating agreements, private claims or other future obligations or conditions which may affect all or any portion of the leased Tract, it shall not relieve the Lessee of the obligation to pay any bonus due thereon to the Louisiana State Mineral Board, nor shall the Louisiana State Mineral Board be obligated to refund any consideration paid by the Lessor prior to such modification, cancellation, or abrogation, including, but not limited to, bonuses, rentals and royalties.

NOTE: The State of Louisiana does hereby reserve, and this lease shall be subject to, the imprescriptible right of surface use in the nature of a servitude in favor of the Department of Natural Resources, including its Offices and Commissions, for the sole purpose of implementing, constructing, servicing and maintaining approved coastal zone management and/or restoration projects. Utilization of any and all rights derived under this lease by the mineral lessee, its agents, successors or assigns, shall not interfere with nor hinder the reasonable surface use by the Department of Natural Resources, its Offices or Commissions, as herein above reserved.

Applicant: Red Oak Resources

Bidder	Cash Payment	Price/Acre	Rental	Oil	Gas	Other



JEFFERSON PARISH

P.O.B.
X=2,352,456.00
Y=374,442.00

ST CHARLES PARISH

LAKE SALVADOR

LAFOURCHE PARISH

T16S - R22E



TRACT 37111 - Lafourche and St. Charles Parishes, Louisiana

All of the lands now or formerly constituting the beds and bottoms of all water bodies of every nature and description the title of which vests in the State of Louisiana, together with all islands arising therein and other lands formed by accretion or by reliction, where allowed by law, excepting tax adjudicated lands, and not presently under mineral lease on February 9, 2005, situated in Lafourche and St. Charles Parishes, Louisiana, and more particularly described as follows: Beginning at a point having Coordinates of X = 2,331,910.00 and Y = 374,442.00; thence South 7,852.00 feet to a point having Coordinates of X = 2,331,910.00 and Y = 366,590.00; thence West 9,432.00 feet to a point having Coordinates of X = 2,322,478.00 and Y = 366,590.00; thence North 7,852.00 feet to a point having Coordinates of X = 2,322,478.00 and Y = 374,442.00; thence East 9,432.00 feet to the point of beginning, containing approximately **1,408 acres**, all as more particularly outlined on a plat on file in the Office of Mineral Resources, Department of Natural Resources. All bearings, distances and coordinates are based on Louisiana Coordinate System of 1927, (North or South Zone), where applicable.

NOTE: The above description of the Tract nominated for lease has been provided and corrected, where required, exclusively by the nomination party. Any mineral lease selected from this Tract and awarded by the Louisiana State Mineral Board shall be without warranty of any kind, either express, implied, or statutory, including, but not limited to, the implied warranties of merchantability and fitness for a particular purpose. Should the mineral lease awarded by the Louisiana State Mineral Board be subsequently modified, cancelled or abrogated due to the existence of conflicting leases, operating agreements, private claims or other future obligations or conditions which may affect all or any portion of the leased Tract, it shall not relieve the Lessee of the obligation to pay any bonus due thereon to the Louisiana State Mineral Board, nor shall the Louisiana State Mineral Board be obligated to refund any consideration paid by the Lessor prior to such modification, cancellation, or abrogation, including, but not limited to, bonuses, rentals and royalties.

NOTE: The State of Louisiana does hereby reserve, and this lease shall be subject to, the imprescriptible right of surface use in the nature of a servitude in favor of the Department of Natural Resources, including its Offices and Commissions, for the sole purpose of implementing, constructing, servicing and maintaining approved coastal zone management and/or restoration projects. Utilization of any and all rights derived under this lease by the mineral lessee, its agents, successors or assigns, shall not interfere with nor hinder the reasonable surface use by the Department of Natural Resources, its Offices or Commissions, as herein above reserved.

Applicant: Red Oak Resources

Bidder	Cash Payment	Price/Acre	Rental	Oil	Gas	Other



LAKE SALVADOR

P.O.B.
X=2,331,910.00
Y=374,442.00

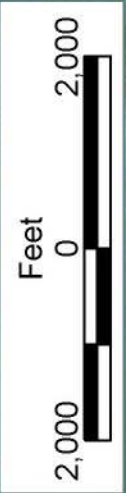


ST CHARLES PARISH

T16S - R21E

LAFOURCHE PARISH

T16S - R21E



TRACT 37112 - St. Mary Parish, Louisiana

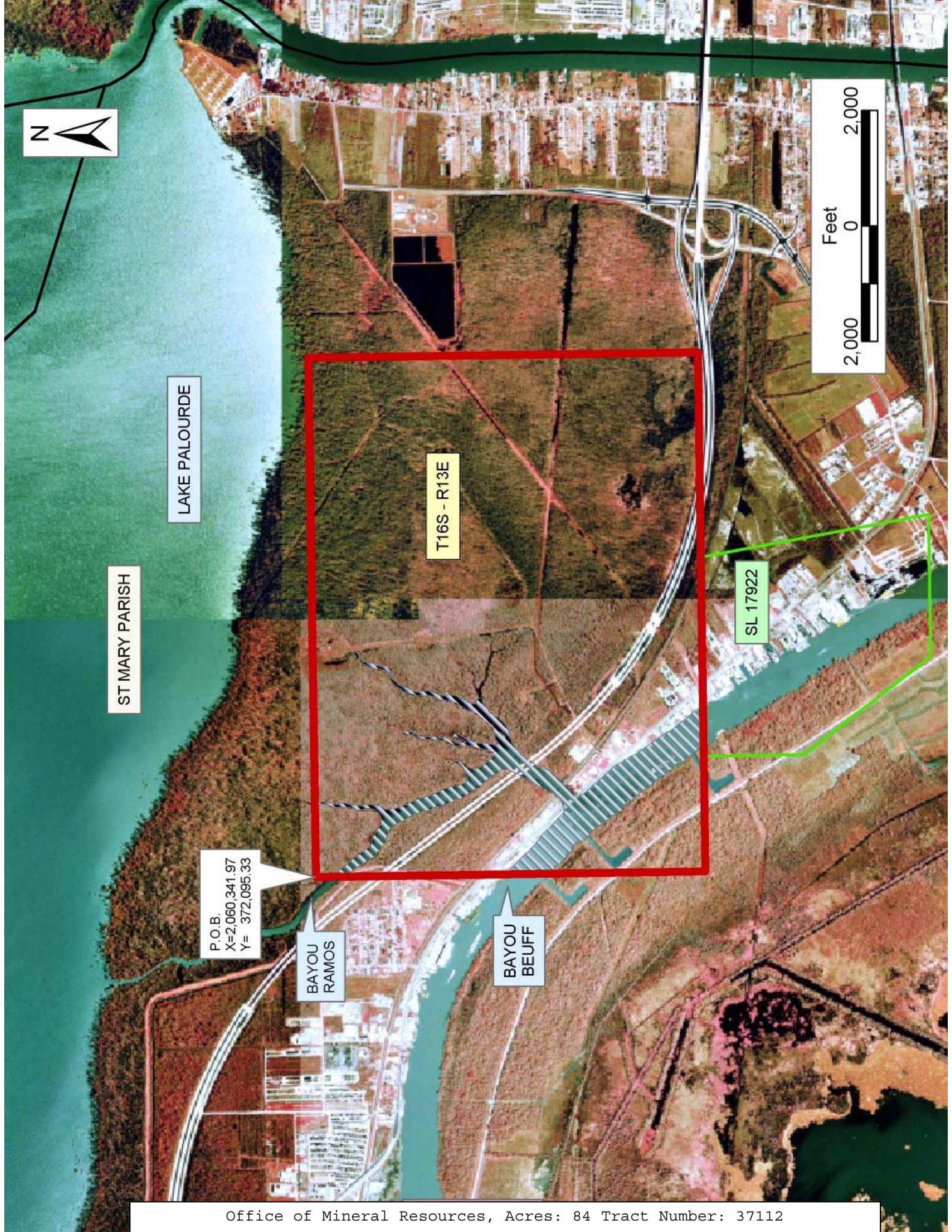
All of the lands now or formerly constituting the beds and bottoms of all water bodies of every nature and description the title of which vests in the State of Louisiana, together with all islands arising therein and other lands formed by accretion or by reliction, where allowed by law, excepting tax adjudicated lands, and not presently under mineral lease on February 9, 2005, situated in St. Mary Parish, Louisiana, and more particularly described as follows: Beginning at a point having Coordinates of X = 2,060,341.97 and Y = 372,095.33; thence East 9,000.00 feet to a point having Coordinates of X = 2,069,341.97 and Y = 372,095.33; thence South 6,750.00 feet to a point having Coordinates of X = 2,069,341.97 and Y = 365,345.33; thence West 3,550.53 feet to the Northeast corner of State Lease No. 17922 having Coordinates of X = 2,065,791.44 and Y = 365,345.33; thence West 3,449.47 feet on the North line of said State Lease No. 17922 to its Northwest corner having Coordinates of X = 2,062,341.97 and Y = 365,345.33; thence West 2,000.00 feet to a point having Coordinates of X = 2,060,341.97 and Y = 365,345.33; thence North 6,750.00 feet to the point of beginning, containing approximately **84 acres**, all as more particularly outlined on a plat on file in the Office of Mineral Resources, Department of Natural Resources. All bearings, distances and coordinates are based on Louisiana Coordinate System of 1927, (North or South Zone), where applicable.

NOTE: The above description of the Tract nominated for lease has been provided and corrected, where required, exclusively by the nomination party. Any mineral lease selected from this Tract and awarded by the Louisiana State Mineral Board shall be without warranty of any kind, either express, implied, or statutory, including, but not limited to, the implied warranties of merchantability and fitness for a particular purpose. Should the mineral lease awarded by the Louisiana State Mineral Board be subsequently modified, cancelled or abrogated due to the existence of conflicting leases, operating agreements, private claims or other future obligations or conditions which may affect all or any portion of the leased Tract, it shall not relieve the Lessee of the obligation to pay any bonus due thereon to the Louisiana State Mineral Board, nor shall the Louisiana State Mineral Board be obligated to refund any consideration paid by the Lessor prior to such modification, cancellation, or abrogation, including, but not limited to, bonuses, rentals and royalties.

NOTE: The State of Louisiana does hereby reserve, and this lease shall be subject to, the imprescriptible right of surface use in the nature of a servitude in favor of the Department of Natural Resources, including its Offices and Commissions, for the sole purpose of implementing, constructing, servicing and maintaining approved coastal zone management and/or restoration projects. Utilization of any and all rights derived under this lease by the mineral lessee, its agents, successors or assigns, shall not interfere with nor hinder the reasonable surface use by the Department of Natural Resources, its Offices or Commissions, as herein above reserved.

Applicant: Kenneth S. Hill Properties, Inc.

Bidder	Cash Payment	Price/Acre	Rental	Oil	Gas	Other



ST MARY PARISH

LAKE PALOURDE

T16S - R13E

SL 17922

P.O.B.
X=2,060,341.97
Y= 372,095.33

BAYOU RAMOS

BAYOU BEUFF



TRACT 37113 - Lafourche Parish, Louisiana

All of the lands now or formerly constituting the beds and bottoms of all water bodies of every nature and description the title of which vests in the State of Louisiana, together with all islands arising therein and other lands formed by accretion or by reliction, where allowed by law, excepting tax adjudicated lands, and not presently under mineral lease on February 9, 2005, situated in Lafourche Parish, Louisiana, and more particularly described as follows: Beginning at a point having Coordinates of X = 2,326,414.00 and Y = 357,258.00; thence West 6,828.00 feet to a point having Coordinates of X = 2,319,586.00 and Y = 357,258.00; thence North 9,332.00 feet to a point having Coordinates of X = 2,319,586.00 and Y = 366,590.00; thence East 6,828.00 feet to a point having Coordinates of X = 2,326,414.00 and Y = 366,590.00; thence South 9,332.00 feet to the point of beginning, containing approximately **401 acres**, all as more particularly outlined on a plat on file in the Office of Mineral Resources, Department of Natural Resources. All bearings, distances and coordinates are based on Louisiana Coordinate System of 1927, (North or South Zone), where applicable.

NOTE: The above description of the Tract nominated for lease has been provided and corrected, where required, exclusively by the nomination party. Any mineral lease selected from this Tract and awarded by the Louisiana State Mineral Board shall be without warranty of any kind, either express, implied, or statutory, including, but not limited to, the implied warranties of merchantability and fitness for a particular purpose. Should the mineral lease awarded by the Louisiana State Mineral Board be subsequently modified, cancelled or abrogated due to the existence of conflicting leases, operating agreements, private claims or other future obligations or conditions which may affect all or any portion of the leased Tract, it shall not relieve the Lessee of the obligation to pay any bonus due thereon to the Louisiana State Mineral Board, nor shall the Louisiana State Mineral Board be obligated to refund any consideration paid by the Lessor prior to such modification, cancellation, or abrogation, including, but not limited to, bonuses, rentals and royalties.

NOTE: The State of Louisiana does hereby reserve, and this lease shall be subject to, the imprescriptible right of surface use in the nature of a servitude in favor of the Department of Natural Resources, including its Offices and Commissions, for the sole purpose of implementing, constructing, servicing and maintaining approved coastal zone management and/or restoration projects. Utilization of any and all rights derived under this lease by the mineral lessee, its agents, successors or assigns, shall not interfere with nor hinder the reasonable surface use by the Department of Natural Resources, its Offices or Commissions, as herein above reserved.

Applicant: Red Oak Resources

Bidder	Cash Payment	Price/Acre	Rental	Oil	Gas	Other



LAKE SALVADOR

CATHOULA BAY



P.O.B.
X=2,326,414.00
Y=357,258.00

LAFOURCHE PARISH



T16S - R21E

T17S - R21E

TEMPLE BAY

MATHERNE BAYOU

CATHOULA BAYOU