

**TRACT 37064 - Bossier and Caddo Parishes, Louisiana**

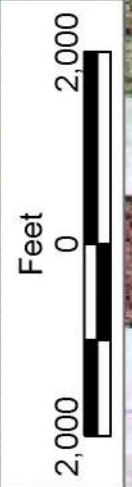
All of the lands now or formerly constituting the beds and bottoms of all water bodies of every nature and description the title of which vests in the State of Louisiana, together with all islands arising therein and other lands formed by accretion or by reliction, where allowed by law, excepting tax adjudicated lands, and not presently under mineral lease on February 9, 2005, situated in Bossier and Caddo Parishes, Louisiana, and more particularly described as follows: Beginning at a point having Coordinates of X = 1,597,345.15 and Y = 790,695.97; thence East 11,056.66 feet to a point having Coordinates of X = 1,608,401.81 and Y = 790,695.97; thence South 10,618.88 feet to a point having Coordinates of X = 1,608,401.81 and Y = 780,077.09; thence West 11,056.66 feet to a point having Coordinates of X = 1,597,345.15 and Y = 780,077.09; thence North 10,618.88 feet to the point of beginning, containing approximately **287 acres**, all as more particularly outlined on a plat on file in the Office of Mineral Resources, Department of Natural Resources. All bearings, distances and coordinates are based on Louisiana Coordinate System of 1927, (North or South Zone), where applicable.

NOTE: The above description of the Tract nominated for lease has been provided and corrected, where required, exclusively by the nomination party. Any mineral lease selected from this Tract and awarded by the Louisiana State Mineral Board shall be without warranty of any kind, either express, implied, or statutory, including, but not limited to, the implied warranties of merchantability and fitness for a particular purpose. Should the mineral lease awarded by the Louisiana State Mineral Board be subsequently modified, cancelled or abrogated due to the existence of conflicting leases, operating agreements, private claims or other future obligations or conditions which may affect all or any portion of the leased Tract, it shall not relieve the Lessee of the obligation to pay any bonus due thereon to the Louisiana State Mineral Board, nor shall the Louisiana State Mineral Board be obligated to refund any consideration paid by the Lessor prior to such modification, cancellation, or abrogation, including, but not limited to, bonuses, rentals and royalties.

Applicant: Cypress Energy Corporation

Bidder	Cash Payment	Price/Acre	Rental	Oil	Gas	Other





BOSSIER PARISH

CADDO PARISH

T21N - R14W

RED RIVER

P.O.B.  
X=1,597,345.15  
Y=790,695.97



**TRACT 37065 - Pointe Coupee Parish, Louisiana**

All of the lands now or formerly constituting the beds and bottoms of all water bodies of every nature and description the title of which vests in the State of Louisiana, together with all islands arising therein and other lands formed by accretion or by reliction, where allowed by law, excepting tax adjudicated lands, and not presently under mineral lease on February 9, 2005, situated in Pointe Coupee Parish, Louisiana, and more particularly described as follows: Beginning at the Southeast corner of State Lease No. 18213, having Coordinates of X = 1,955,248.76 and Y = 714,450.54; thence South 72 degrees 25 minutes 14 seconds East 12,918.76 feet to a point on the Western boundary of State Lease No. 18214, having Coordinates of X = 1,967,564.20 and Y = 710,548.70; thence South 26 degrees 15 minutes 00 seconds West 4,758.38 feet along said Western boundary to the Southwest corner of said State Lease No. 18214, having Coordinates of X = 1,965,459.62 and Y = 706,281.03; thence North 72 degrees 25 minutes 14 seconds West 14,033.31 feet to a point of intersection with the Easterly boundary of JD U TUSC RA SUB, created by Office of Conservation Order No. 1046, effective September 6, 1978, having Coordinates of X = 1,952,081.69 and Y = 710,519.50; thence North 09 degrees 30 minutes 00 seconds East 2,989.92 feet along said Easterly boundary of SUB to the most Southerly corner of State Lease No. 6863 as amended, having Coordinates of X = 1,952,575.17 and Y = 713,468.41; thence North 09 degrees 30 minutes 00 seconds East 1045.93 feet along the Easterly boundary of said State Lease No. 6863 to the Southeast corner of the Southerly portion (of two non contiguous portions) of State Lease No. 6864 as amended, being the Northeast corner of said State Lease No. 6863, having Coordinates of X = 1,952,747.80 and Y = 714,500.00; thence North 09 degrees 30 minutes 00 seconds East 363.99 feet along the Easterly boundary of said State Lease No. 6864 to a point of intersection with the Southerly boundary of said State Lease No. 18213, also being the Northeast corner of said Southerly portion of State Lease No. 6864, having Coordinates of X = 1,952,807.87 and Y = 714,859.00; thence South 80 degrees 30 minutes 00 seconds East 2,474.83 feet along said Southerly boundary of said State Lease No. 18213 to the point of beginning, **LESS AND EXCEPT** that portion, if any, of State Lease No. 6863 and State Lease No. 6864 that may lie within the above described tract, containing approximately **745 acres**, all as more particularly outlined on a plat on file in the Office of Mineral Resources, Department of Natural Resources. All bearings, distances and coordinates are based on Louisiana Coordinate System of 1927, (North or South Zone), where applicable.

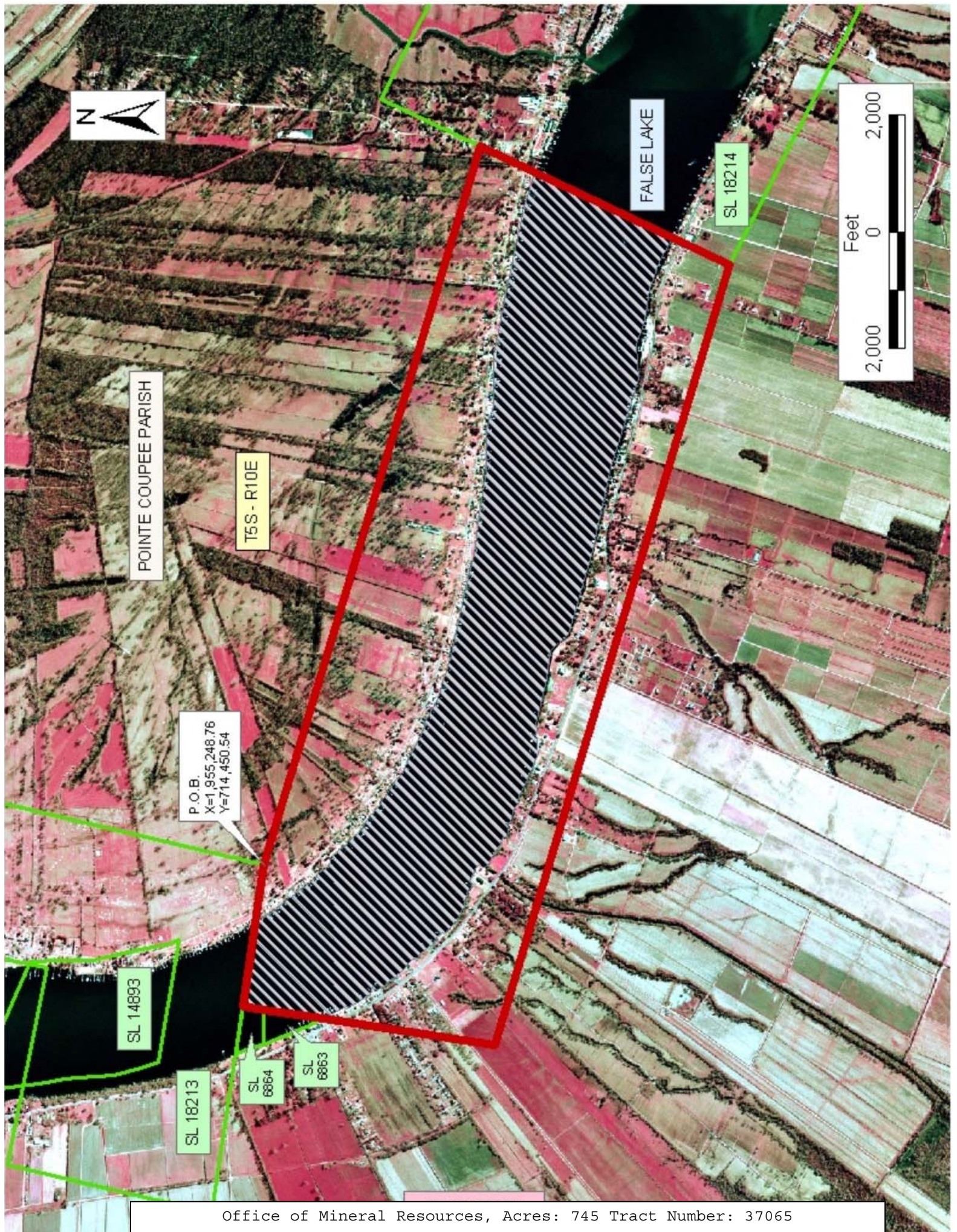
NOTE: The above description of the Tract nominated for lease has been provided and corrected, where required, exclusively by the nomination party. Any mineral lease selected from this Tract and awarded by the Louisiana State Mineral Board shall be without warranty of any kind, either express, implied, or statutory, including, but not limited to, the implied warranties of merchantability and fitness for a particular purpose. Should the mineral lease awarded by the Louisiana State Mineral Board be subsequently modified, cancelled or abrogated due to the

existence of conflicting leases, operating agreements, private claims or other future obligations or conditions which may affect all or any portion of the leased Tract, it shall not relieve the Lessee of the obligation to pay any bonus due thereon to the Louisiana State Mineral Board, nor shall the Louisiana State Mineral Board be obligated to refund any consideration paid by the Lessor prior to such modification, cancellation, or abrogation, including, but not limited to, bonuses, rentals and royalties.

Applicant: Theophilus Oil, Gas & Land Services, LLC

Bidder	Cash Payment	Price/Acre	Rental	Oil	Gas	Other







**TRACT 37066 - Beauregard and Calcasieu Parishes, Louisiana**

All of the lands now or formerly constituting the beds and bottoms of all water bodies of every nature and description the title of which vests in the State of Louisiana, together with all islands arising therein and other lands formed by accretion or by reliction, where allowed by law, excepting tax adjudicated lands, and not presently under mineral lease on February 9, 2005, situated in Beauregard and Calcasieu Parishes, Louisiana, and more particularly described as follows: Beginning at a point having Coordinates of X = 1,385,057.64 and Y = 636,629.88; thence South 5,200.00 feet to the Northeast corner of State Lease No. 17677 having Coordinates of X = 1,385,057.64 and Y = 631,429.88; thence West 15,840.00 feet along the North line of said State Lease No. 17677 to its Northwest corner having Coordinates of X = 1,369,217.64 and Y = 631,429.88; thence North 5,200.00 feet to a point having Coordinates of X = 1,369,217.64 and Y = 636,629.88; thence East 15,840.00 feet to the point of beginning, containing approximately **19 acres**, all as more particularly outlined on a plat on file in the Office of Mineral Resources, Department of Natural Resources. All bearings, distances and coordinates are based on Louisiana Coordinate System of 1927, (North or South Zone), where applicable.

NOTE: The above description of the Tract nominated for lease has been provided and corrected, where required, exclusively by the nomination party. Any mineral lease selected from this Tract and awarded by the Louisiana State Mineral Board shall be without warranty of any kind, either express, implied, or statutory, including, but not limited to, the implied warranties of merchantability and fitness for a particular purpose. Should the mineral lease awarded by the Louisiana State Mineral Board be subsequently modified, cancelled or abrogated due to the existence of conflicting leases, operating agreements, private claims or other future obligations or conditions which may affect all or any portion of the leased Tract, it shall not relieve the Lessee of the obligation to pay any bonus due thereon to the Louisiana State Mineral Board, nor shall the Louisiana State Mineral Board be obligated to refund any consideration paid by the Lessor prior to such modification, cancellation, or abrogation, including, but not limited to, bonuses, rentals and royalties.

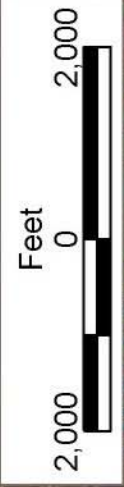
Bidder	Cash Payment	Price/Acre	Rental	Oil	Gas	Other

Applicant: Thunderbay Exploration, Inc.





P.O.B.  
X=1,385,057.64  
Y= 636,629.88



BEAUREGARD PARISH

T7S - R9W

SL 16532  
(Tax Adjudicated)

SL 17677

T8S - R9W

CALCASIEU PARISH

HICKORY  
BRANCH

BECKWITH  
CREEK



**TRACT 37067 - Calcasieu Parish, Louisiana**

All of the lands now or formerly constituting the beds and bottoms of all water bodies of every nature and description the title of which vests in the State of Louisiana, together with all islands arising therein and other lands formed by accretion or by reliction, where allowed by law, excepting tax adjudicated lands, and not presently under mineral lease on February 9, 2005, situated in Calcasieu Parish, Louisiana, and more particularly described as follows: Beginning at an interior corner of State Lease No. 17677 having Coordinates of X = 1,371,852.40 and Y = 630,641.78; thence along the boundary of said State Lease No. 17677 the following courses: South 00 degrees 47 minutes 13 seconds West 1,996.26 feet to a point having Coordinates of X = 1,371,824.98 and Y = 628,645.71 and North 89 degrees 49 minutes 41 seconds West 2,607.35 feet to a point having Coordinates of X = 1,369,217.64 and Y = 628,653.53; thence North 89 degrees 49 minutes 41 seconds West 28.83 feet to a point having Coordinates of X = 1,369,188.81 and Y = 628,653.62; thence North 00 degrees 50 minutes 02 seconds East 1,981.06 feet to an interior corner of said State Lease No. 17677 having Coordinates of X = 1,369,217.65 and Y = 630,634.47; thence North 89 degrees 50 minutes 28 seconds East 2,634.76 feet along the boundary of said State Lease No. 17677 to the point of beginning, containing approximately **5 acres**, all as more particularly outlined on a plat on file in the Office of Mineral Resources, Department of Natural Resources. All bearings, distances and coordinates are based on Louisiana Coordinate System of 1927, (North or South Zone), where applicable.

NOTE: The above description of the Tract nominated for lease has been provided and corrected, where required, exclusively by the nomination party. Any mineral lease selected from this Tract and awarded by the Louisiana State Mineral Board shall be without warranty of any kind, either express, implied, or statutory, including, but not limited to, the implied warranties of merchantability and fitness for a particular purpose. Should the mineral lease awarded by the Louisiana State Mineral Board be subsequently modified, cancelled or abrogated due to the existence of conflicting leases, operating agreements, private claims or other future obligations or conditions which may affect all or any portion of the leased Tract, it shall not relieve the Lessee of the obligation to pay any bonus due thereon to the Louisiana State Mineral Board, nor shall the Louisiana State Mineral Board be obligated to refund any consideration paid by the Lessor prior to such modification, cancellation, or abrogation, including, but not limited to, bonuses, rentals and royalties.

Applicant: Thunderbay Exploration, Inc.

Bidder	Cash Payment	Price/Acre	Rental	Oil	Gas	Other





P.O.B.  
X=1,371,852.40  
Y= 630,641.78

CALCASIEU PARISH

T8S - R9W

SL 17677

T8S - R10W

BECKWITH  
CREEK



**TRACT 37068 - Acadia Parish, Louisiana**

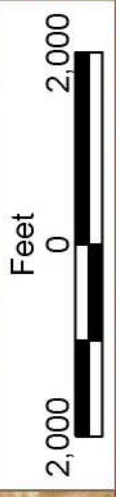
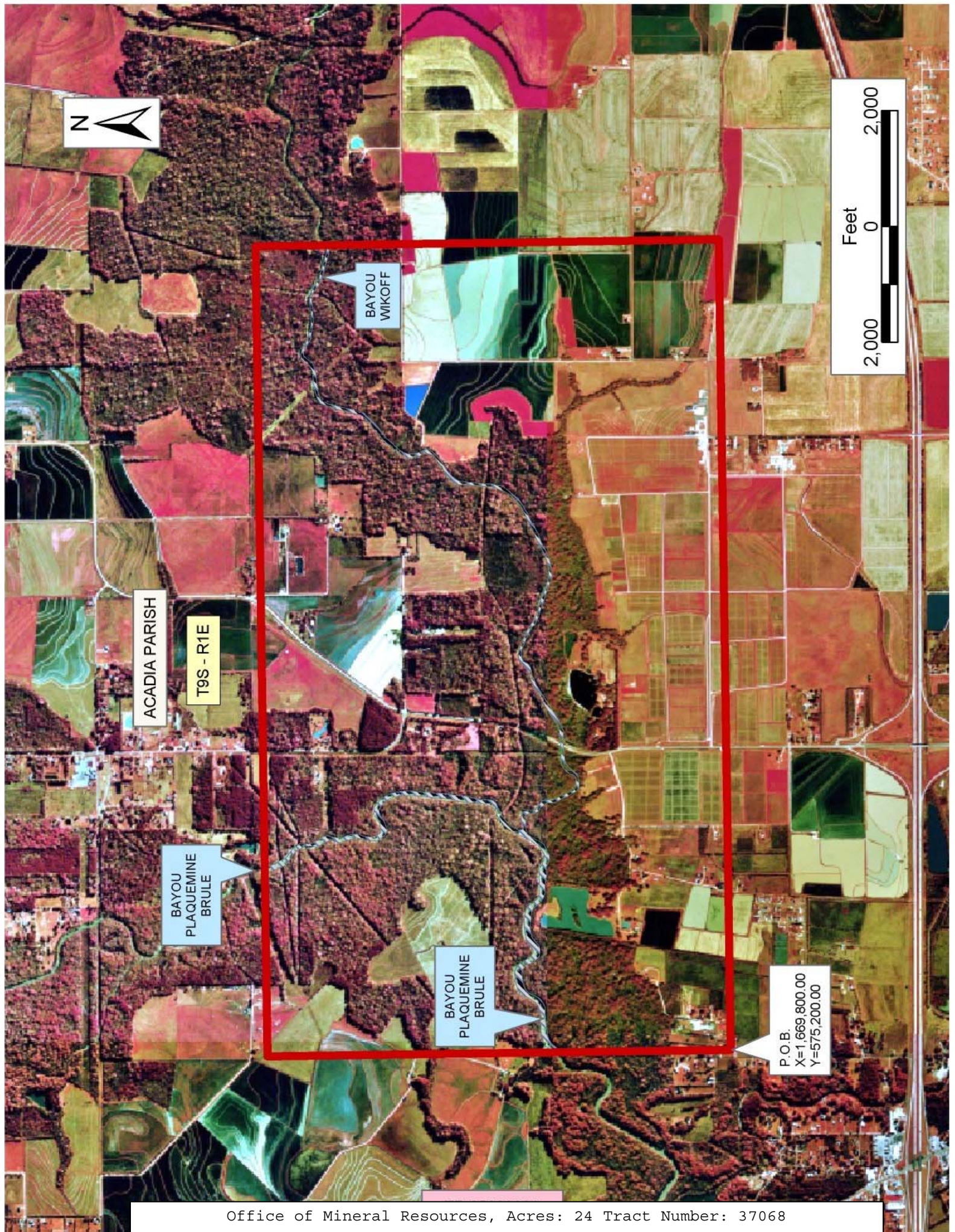
All of the lands now or formerly constituting the beds and bottoms of all water bodies of every nature and description the title of which vests in the State of Louisiana, together with all islands arising therein and other lands formed by accretion or by reliction, where allowed by law, excepting tax adjudicated lands, and not presently under mineral lease on February 9, 2005, situated in Acadia Parish, Louisiana, and more particularly described as follows: Beginning at a point having Coordinates of X = 1,669,800.00 and Y = 575,200.00; thence North 8,000.00 feet to a point having Coordinates of X = 1,669,800.00 and Y = 583,200.00; thence East 14,000.00 feet to a point having Coordinates of X = 1,683,800.00 and Y = 583,200.00; thence South 8,000.00 feet to a point having Coordinates of X = 1,683,800.00 and Y = 575,200.00; thence West 14,000.00 feet to the point of beginning, containing approximately **24 acres**, all as more particularly outlined on a plat on file in the Office of Mineral Resources, Department of Natural Resources. All bearings, distances and coordinates are based on Louisiana Coordinate System of 1927, (North or South Zone), where applicable.

NOTE: The above description of the Tract nominated for lease has been provided and corrected, where required, exclusively by the nomination party. Any mineral lease selected from this Tract and awarded by the Louisiana State Mineral Board shall be without warranty of any kind, either express, implied, or statutory, including, but not limited to, the implied warranties of merchantability and fitness for a particular purpose. Should the mineral lease awarded by the Louisiana State Mineral Board be subsequently modified, cancelled or abrogated due to the existence of conflicting leases, operating agreements, private claims or other future obligations or conditions which may affect all or any portion of the leased Tract, it shall not relieve the Lessee of the obligation to pay any bonus due thereon to the Louisiana State Mineral Board, nor shall the Louisiana State Mineral Board be obligated to refund any consideration paid by the Lessor prior to such modification, cancellation, or abrogation, including, but not limited to, bonuses, rentals and royalties.

Applicant: Denex Oil & Gas Co., Inc.

Bidder	Cash Payment	Price/Acre	Rental	Oil	Gas	Other





BAYOU WIKOFF

ACADIA PARISH

T9S - R1E

BAYOU PLAQUEMINE BRULE

BAYOU PLAQUEMINE BRULE

P.O.B.  
X=1,669,800.00  
Y=575,200.00



**TRACT 37069 - Portion of Blocks 25, 26, 27, 30, 31, and 32, North Lake Borgne Area, Orleans and St. Tammany Parishes, Louisiana**

All of the lands now or formerly constituting the beds and bottoms of all water bodies of every nature and description the title of which vests in the State of Louisiana, together with all islands arising therein and other lands formed by accretion or by reliction, where allowed by law, excepting tax adjudicated lands, and not presently under mineral lease on February 9, 2005, situated in Orleans and St. Tammany Parishes, Louisiana, and more particularly described as follows: Beginning at a point within Block 25, North Lake Borgne Area, having Coordinates of X = 2,525,837.32 and Y = 549,841.28; thence South 11,750.00 feet to a point within Block 27 having Coordinates of X = 2,525,837.39 and Y = 538,091.28; thence West 10,732.83 to a point within Block 30 having Coordinates of X = 2,515,104.56 and Y = 538,091.28; thence North 11,750.00 feet to a point within Block 32 having Coordinates of X = 2,515,104.56 and Y = 549,841.28; thence East 10,732.83 feet to the point of beginning, **LESS AND EXCEPT** Operating Agreement 269 further described as follows: Beginning at point having Coordinates of X = 2,520,890.00 and Y = 554,238.70; thence South 5,280.00 feet to a point; West 5,280.00 to a point; North 5,280.00 to a point; East 5,280.00 to the point of beginning, containing approximately **474 acres**, all as more particularly outlined on a plat on file in the Office of Mineral Resources, Department of Natural Resources. All bearings, distances and coordinates are based on Louisiana Coordinate System of 1927, (North or South Zone), where applicable.

NOTE: The above description of the Tract nominated for lease has been provided and corrected, where required, exclusively by the nomination party. Any mineral lease selected from this Tract and awarded by the Louisiana State Mineral Board shall be without warranty of any kind, either express, implied, or statutory, including, but not limited to, the implied warranties of merchantability and fitness for a particular purpose. Should the mineral lease awarded by the Louisiana State Mineral Board be subsequently modified, cancelled or abrogated due to the existence of conflicting leases, operating agreements, private claims or other future obligations or conditions which may affect all or any portion of the leased Tract, it shall not relieve the Lessee of the obligation to pay any bonus due thereon to the Louisiana State Mineral Board, nor shall the Louisiana State Mineral Board be obligated to refund any consideration paid by the Lessor prior to such modification, cancellation, or abrogation, including, but not limited to, bonuses, rentals and royalties.

NOTE: The Office of Mineral Resources will require a minimum bonus of \$150 per acre and a minimum royalty of 21%.

NOTE: The State of Louisiana does hereby reserve, and this lease shall be subject to, the imprescriptible right of surface use in the nature of a servitude in favor of the Department of Natural Resources, including its Offices and Commissions, for the sole purpose of implementing, constructing, servicing and maintaining approved coastal zone management



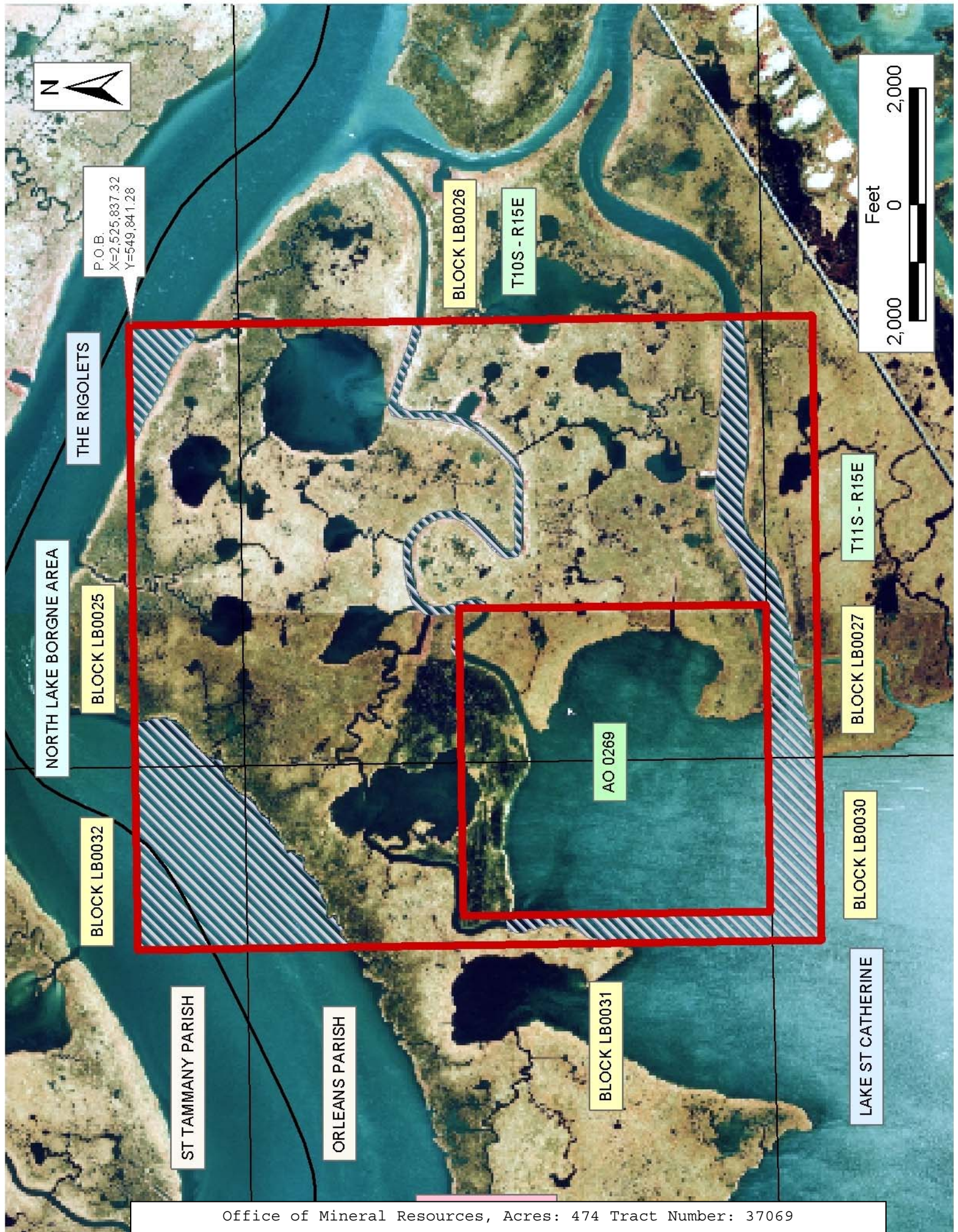
and/or restoration projects. Utilization of any and all rights derived under this lease by the mineral lessee, its agents, successors or assigns, shall not interfere with nor hinder the reasonable surface use by the Department of Natural Resources, its Offices or Commissions, as herein above reserved.

NOTE: The Department of Wildlife and Fisheries has designated certain areas in the coastal waters of the State of Louisiana as Oyster Seed Bed Areas. The exact location of those Seed Bed Areas must be obtained from the Department of Wildlife and Fisheries and any work done under a mineral lease from the State of Louisiana may necessarily be conducted in conformity with the rules and regulations promulgated by the said Department of Wildlife and Fisheries for Oyster Seed Bed Areas.

Applicant: Cypress Energy Corporation

Bidder	Cash Payment	Price/Acre	Rental	Oil	Gas	Other





P.O.B.  
X=2,525,837.32  
Y=549,841.28

THE RIGOLETS

NORTH LAKE BORGNE AREA

BLOCK LB0025

BLOCK LB0032

ST TAMMANY PARISH

ORLEANS PARISH

BLOCK LB0031

LAKE ST CATHERINE

BLOCK LB0026

T10S - R15E

T11S - R15E

BLOCK LB0027

BLOCK LB0030

AO 0269





**TRACT 37070 - Portion of Blocks 22, 23, 24, 25, 26, and 27, North Lake Borgne Area, Orleans, St. Bernard and St. Tammany Parishes, Louisiana**

All of the lands now or formerly constituting the beds and bottoms of all water bodies of every nature and description the title of which vests in the State of Louisiana, together with all islands arising therein and other lands formed by accretion or by reliction, where allowed by law, excepting tax adjudicated lands, and not presently under mineral lease on February 9, 2005, situated in Orleans, St. Bernard and St. Tammany Parishes, Louisiana, and more particularly described as follows: Beginning at a point within Block 24, North Lake Borgne Area, having Coordinates of X = 2,536,730.00 and Y = 549,841.28; thence South 9,841.28 feet to the Northwest corner of State Lease No. 6646, as amended also being a point within Block 23 having Coordinates of X = 2,536,730.00 and Y = 540,000.00; thence South 1,908.72 feet along the West line of said State Lease No. 6646 through its Southwest corner and the Northwest corner of State Lease No. 6647, along the West line of said State Lease No. 6647 to a point within Block 22, having Coordinates of X = 2,536,730.00 and Y = 538,091.28; thence West 10,892.68 feet to a point within Block 27 having Coordinates of X = 2,525,837.32 and Y = 538,091.28; thence North 11,750.00 feet to a point within Block 25 having Coordinates of X = 2,525,837.32 and Y = 549,841.28; thence East 10,892.68 feet to the point of beginning, containing approximately **1,088 acres**, all as more particularly outlined on a plat on file in the Office of Mineral Resources, Department of Natural Resources. All bearings, distances and coordinates are based on Louisiana Coordinate System of 1927, (North or South Zone), where applicable.

NOTE: The above description of the Tract nominated for lease has been provided and corrected, where required, exclusively by the nomination party. Any mineral lease selected from this Tract and awarded by the Louisiana State Mineral Board shall be without warranty of any kind, either express, implied, or statutory, including, but not limited to, the implied warranties of merchantability and fitness for a particular purpose. Should the mineral lease awarded by the Louisiana State Mineral Board be subsequently modified, cancelled or abrogated due to the existence of conflicting leases, operating agreements, private claims or other future obligations or conditions which may affect all or any portion of the leased Tract, it shall not relieve the Lessee of the obligation to pay any bonus due thereon to the Louisiana State Mineral Board, nor shall the Louisiana State Mineral Board be obligated to refund any consideration paid by the Lessor prior to such modification, cancellation, or abrogation, including, but not limited to, bonuses, rentals and royalties.

NOTE: The Office of Mineral Resources will require a minimum bonus of \$150 per acre and a minimum royalty of 21%.

NOTE: The State of Louisiana does hereby reserve, and this lease shall be subject to, the imprescriptible right of surface use in the nature of a servitude in favor of the Department of Natural Resources, including its Offices and Commissions, for the sole purpose of implementing,

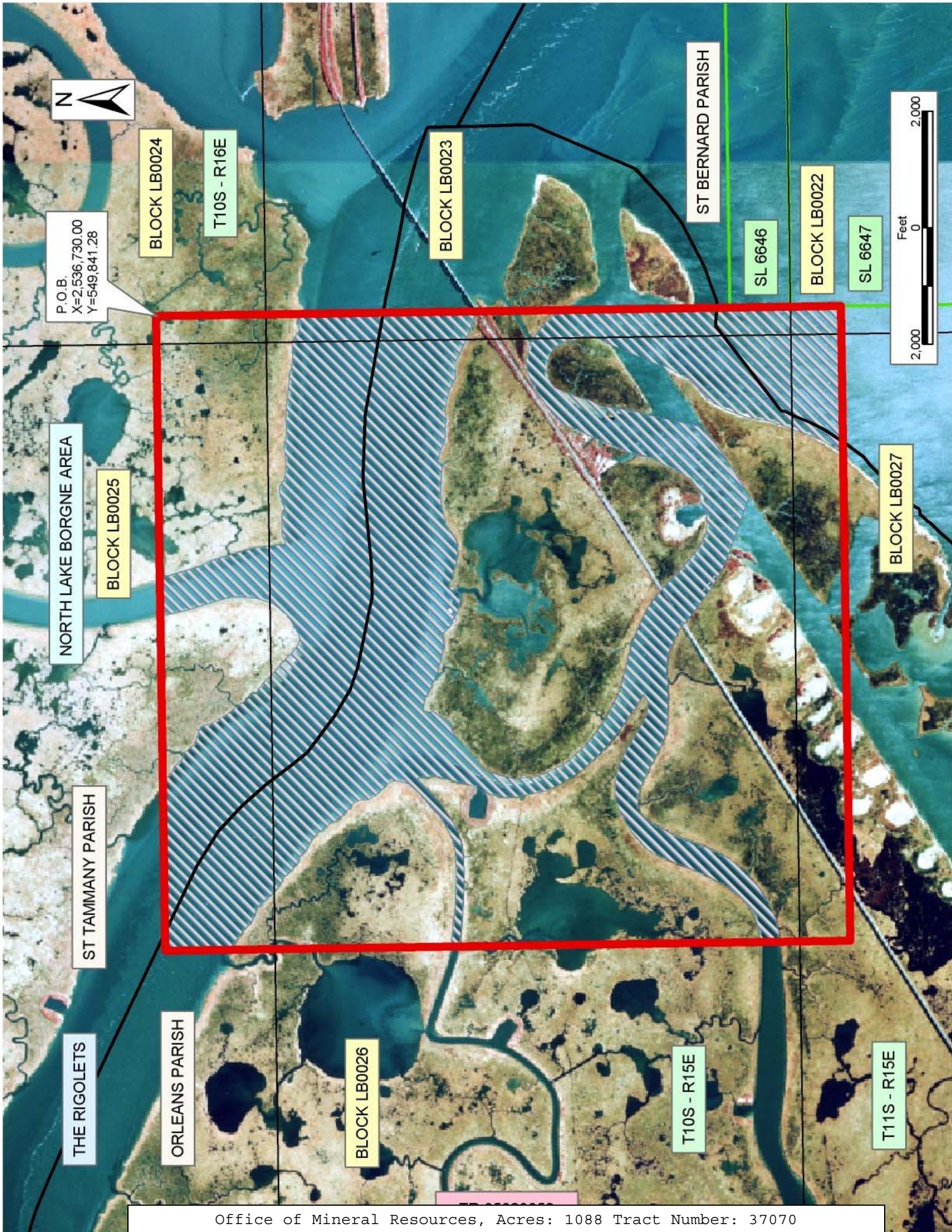
constructing, servicing and maintaining approved coastal zone management and/or restoration projects. Utilization of any and all rights derived under this lease by the mineral lessee, its agents, successors or assigns, shall not interfere with nor hinder the reasonable surface use by the Department of Natural Resources, its Offices or Commissions, as herein above reserved.

NOTE: The Department of Wildlife and Fisheries has designated certain areas in the coastal waters of the State of Louisiana as Oyster Seed Bed Areas. The exact location of those Seed Bed Areas must be obtained from the Department of Wildlife and Fisheries and any work done under a mineral lease from the State of Louisiana may necessarily be conducted in conformity with the rules and regulations promulgated by the said Department of Wildlife and Fisheries for Oyster Seed Bed Areas.

Applicant: Cypress Energy Corporation

Bidder	Cash Payment	Price/Acre	Rental	Oil	Gas	Other







**TRACT 37071 - Portion of Blocks 23, and 24, North Lake Borgne Area, Orleans, St. Bernard and St. Tammany Parishes, Louisiana**

All of the lands now or formerly constituting the beds and bottoms of all water bodies of every nature and description the title of which vests in the State of Louisiana, together with all islands arising therein and other lands formed by accretion or by reliction, where allowed by law, excepting tax adjudicated lands, and not presently under mineral lease on February 9, 2005, situated in Orleans, St. Bernard and St. Tammany Parishes, Louisiana, and more particularly described as follows: Beginning at a point within Block 24, North Lake Borgne Area, having Coordinates of X = 2,536,730.00 and Y = 549,841.28; thence East 10,700.40 feet to a point having Coordinates of X = 2,547,430.40 and Y = 549,841.28; thence South 6,964.48 feet to a point on the North line of State Lease No. 6646, as amended, also being a point within Block 23 having Coordinates of X = 2,547,430.40 and Y = 542,876.80; thence along the boundary of said State Lease No. 6646 the following: West 4,600.00 feet, South 2,876.80 feet and West 6,100.40 feet to its Northwest corner having Coordinates of X = 2,536,730.00 and Y = 540,000.00; thence North 9,841.28 feet to the point of beginning, containing approximately **1,553 acres**, all as more particularly outlined on a plat on file in the Office of Mineral Resources, Department of Natural Resources. All bearings, distances and coordinates are based on Louisiana Coordinate System of 1927, (North or South Zone), where applicable.

NOTE: The above description of the Tract nominated for lease has been provided and corrected, where required, exclusively by the nomination party. Any mineral lease selected from this Tract and awarded by the Louisiana State Mineral Board shall be without warranty of any kind, either express, implied, or statutory, including, but not limited to, the implied warranties of merchantability and fitness for a particular purpose. Should the mineral lease awarded by the Louisiana State Mineral Board be subsequently modified, cancelled or abrogated due to the existence of conflicting leases, operating agreements, private claims or other future obligations or conditions which may affect all or any portion of the leased Tract, it shall not relieve the Lessee of the obligation to pay any bonus due thereon to the Louisiana State Mineral Board, nor shall the Louisiana State Mineral Board be obligated to refund any consideration paid by the Lessor prior to such modification, cancellation, or abrogation, including, but not limited to, bonuses, rentals and royalties.

NOTE: The Office of Mineral Resources will require a minimum bonus of \$150 per acre and a minimum royalty of 21%.

NOTE: The State of Louisiana does hereby reserve, and this lease shall be subject to, the imprescriptible right of surface use in the nature of a servitude in favor of the Department of Natural Resources, including its Offices and Commissions, for the sole purpose of implementing, constructing, servicing and maintaining approved coastal zone management and/or restoration projects. Utilization of any and all rights derived

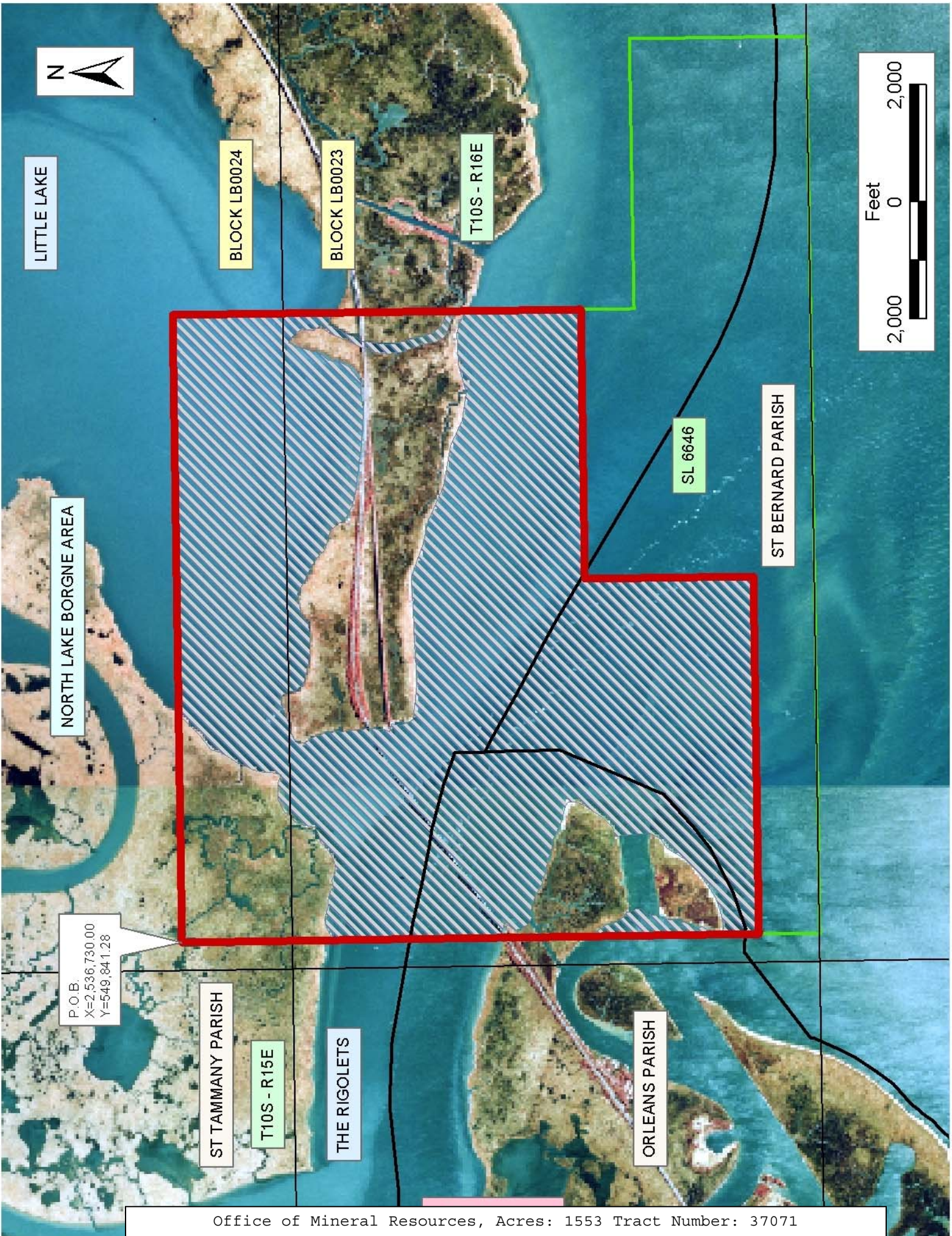
under this lease by the mineral lessee, its agents, successors or assigns, shall not interfere with nor hinder the reasonable surface use by the Department of Natural Resources, its Offices or Commissions, as herein above reserved.

NOTE: The Department of Wildlife and Fisheries has designated certain areas in the coastal waters of the State of Louisiana as Oyster Seed Bed Areas. The exact location of those Seed Bed Areas must be obtained from the Department of Wildlife and Fisheries and any work done under a mineral lease from the State of Louisiana may necessarily be conducted in conformity with the rules and regulations promulgated by the said Department of Wildlife and Fisheries for Oyster Seed Bed Areas.

Applicant: Cypress Energy Corporation

Bidder	Cash Payment	Price/Acre	Rental	Oil	Gas	Other





P.O.B.  
X=2,536,730.00  
Y=549,841.28

ST TAMMANY PARISH

T10S - R15E

THE RIGOLETS

ORLEANS PARISH

ST BERNARD PARISH

SL 6646

NORTH LAKE BORGNE AREA

LITTLE LAKE

BLOCK LB0024

BLOCK LB0023

T10S - R16E



**TRACT 37072 - Portion of Blocks 1, 2, 23, and 24, North Lake Borgne Area, St. Tammany Parish, Louisiana**

All of the lands now or formerly constituting the beds and bottoms of all water bodies of every nature and description the title of which vests in the State of Louisiana, together with all islands arising therein and other lands formed by accretion or by reliction, where allowed by law, excepting tax adjudicated lands, and not presently under mineral lease on February 9, 2005, situated in St. Tammany Parish, Louisiana, and more particularly described as follows: Beginning at a point within Block 2, North Lake Borgne Area, having Coordinates of X = 2,557,900.40 and Y = 541,976.80; thence West 5,870.00 feet to the Northeast corner of State Lease No. 6646, as amended, also being a point within Block 23, having Coordinates of X = 2,552,030.40 and Y = 541,976.80; thence along the boundary of said State Lease No. 6646 the following: West 4,600.00 feet and North 900.00 feet to a point on its North line; thence continue North 6,964.48 feet to a point within Block 24 having Coordinates of X = 2,547,430.40 and Y = 549,841.28; thence East 10,470.00 feet to a point within Block 1 having Coordinates of X = 2,557,900.40 and Y = 549,841.28; thence South 7,864.48 feet to the point of beginning, containing approximately **1,010 acres**, all as more particularly outlined on a plat on file in the Office of Mineral Resources, Department of Natural Resources. All bearings, distances and coordinates are based on Louisiana Coordinate System of 1927, (North or South Zone), where applicable.

NOTE: The above description of the Tract nominated for lease has been provided and corrected, where required, exclusively by the nomination party. Any mineral lease selected from this Tract and awarded by the Louisiana State Mineral Board shall be without warranty of any kind, either express, implied, or statutory, including, but not limited to, the implied warranties of merchantability and fitness for a particular purpose. Should the mineral lease awarded by the Louisiana State Mineral Board be subsequently modified, cancelled or abrogated due to the existence of conflicting leases, operating agreements, private claims or other future obligations or conditions which may affect all or any portion of the leased Tract, it shall not relieve the Lessee of the obligation to pay any bonus due thereon to the Louisiana State Mineral Board, nor shall the Louisiana State Mineral Board be obligated to refund any consideration paid by the Lessor prior to such modification, cancellation, or abrogation, including, but not limited to, bonuses, rentals and royalties.

NOTE: The Office of Mineral Resources will require a minimum bonus of \$150 per acre and a minimum royalty of 21%.

NOTE: The State of Louisiana does hereby reserve, and this lease shall be subject to, the imprescriptible right of surface use in the nature of a servitude in favor of the Department of Natural Resources, including its Offices and Commissions, for the sole purpose of implementing, constructing, servicing and maintaining approved coastal zone management and/or restoration projects. Utilization of any and all rights derived



under this lease by the mineral lessee, its agents, successors or assigns, shall not interfere with nor hinder the reasonable surface use by the Department of Natural Resources, its Offices or Commissions, as herein above reserved.

NOTE: The Department of Wildlife and Fisheries has designated certain areas in the coastal waters of the State of Louisiana as Oyster Seed Bed Areas. The exact location of those Seed Bed Areas must be obtained from the Department of Wildlife and Fisheries and any work done under a mineral lease from the State of Louisiana may necessarily be conducted in conformity with the rules and regulations promulgated by the said Department of Wildlife and Fisheries for Oyster Seed Bed Areas.

Applicant: Cypress Energy Corporation

Bidder	Cash Payment	Price/Acre	Rental	Oil	Gas	Other



BLOCK LB0001

BLOCK LB0002

P.O.B.  
X=2,557,900.40  
Y=541,976.80



ST TAMMANY PARISH

T10S - R16E

ST BERNARD PARISH

SL 6646

LITTLE LAKE

NORTH LAKE BORGNE AREA

BLOCK LB0024

BLOCK LB0023



**TRACT 37073 - Portion of Blocks 30, 31, and 32, North Lake Borgne Area, Orleans and St. Tammany Parishes, Louisiana**

All of the lands now or formerly constituting the beds and bottoms of all water bodies of every nature and description the title of which vests in the State of Louisiana, together with all islands arising therein and other lands formed by accretion or by reliction, where allowed by law, excepting tax adjudicated lands, and not presently under mineral lease on February 9, 2005, situated in Orleans and St. Tammany Parishes, Louisiana, and more particularly described as follows: Beginning at a point within Block 32, North Lake Borgne Area, having Coordinates of X = 2,515,104.49 and Y = 549,841.28; thence South 11,750.00 feet to a point within Block 30 having Coordinates of X = 2,515,104.49 and Y = 538,091.28; thence West 13,200.00 feet to a point within Block 30 having Coordinates of X = 2,501,904.49 and Y = 538,091.28; thence North 11,750.00 feet to a point having Coordinates of X = 2,501,904.49 and Y = 549,841.28; thence East 13,200.00 feet to the point of beginning, **LESS AND EXCEPT** all those portions of Lake Pontchartrain that may lie within the above described tract, containing approximately **2,074 acres**, all as more particularly outlined on a plat on file in the Office of Mineral Resources, Department of Natural Resources. All bearings, distances and coordinates are based on Louisiana Coordinate System of 1927, (North or South Zone), where applicable.

NOTE: The above description of the Tract nominated for lease has been provided and corrected, where required, exclusively by the nomination party. Any mineral lease selected from this Tract and awarded by the Louisiana State Mineral Board shall be without warranty of any kind, either express, implied, or statutory, including, but not limited to, the implied warranties of merchantability and fitness for a particular purpose. Should the mineral lease awarded by the Louisiana State Mineral Board be subsequently modified, cancelled or abrogated due to the existence of conflicting leases, operating agreements, private claims or other future obligations or conditions which may affect all or any portion of the leased Tract, it shall not relieve the Lessee of the obligation to pay any bonus due thereon to the Louisiana State Mineral Board, nor shall the Louisiana State Mineral Board be obligated to refund any consideration paid by the Lessor prior to such modification, cancellation, or abrogation, including, but not limited to, bonuses, rentals and royalties.

NOTE: The Office of Mineral Resources will require a minimum bonus of \$150 per acre and a minimum royalty of 21%.

NOTE: The above described tract may be in the vicinity of existing shell reefs where drilling and dredging operations must be conducted in strict conformity with the regulations adopted by the Louisiana Department of Wildlife and Fisheries and/or the U.S. Corps of Engineers, U.S. Army.

NOTE: The State of Louisiana does hereby reserve, and this lease shall be subject to, the imprescriptible right of surface use in the nature of a

servitude in favor of the Department of Natural Resources, including its Offices and Commissions, for the sole purpose of implementing, constructing, servicing and maintaining approved coastal zone management and/or restoration projects. Utilization of any and all rights derived under this lease by the mineral lessee, its agents, successors or assigns, shall not interfere with nor hinder the reasonable surface use by the Department of Natural Resources, its Offices or Commissions, as herein above reserved.

NOTE: The Department of Wildlife and Fisheries has designated certain areas in the coastal waters of the State of Louisiana as Oyster Seed Bed Areas. The exact location of those Seed Bed Areas must be obtained from the Department of Wildlife and Fisheries and any work done under a mineral lease from the State of Louisiana may necessarily be conducted in conformity with the rules and regulations promulgated by the said Department of Wildlife and Fisheries for Oyster Seed Bed Areas.

Applicant: Cypress Energy Corporation

Bidder	Cash Payment	Price/Acre	Rental	Oil	Gas	Other



