

**TRACT 37049 - Portion of Block 2, West Cameron Area, Revised, Cameron Parish, Louisiana**

The beds and bottoms of all water bodies belonging to the State of Louisiana located in Block 2, West Cameron Area, Revised, together with any present lands formed by accretion to the shoreline or islands formed therein, located in Cameron Parish, Louisiana, owned by and not presently under mineral lease as of February 9, 2005, from the State of Louisiana, the geographical area of which is more fully described as follows: Beginning at the Northwest corner of Block 2, West Cameron Area, Revised, said point located on the 1975 Decree Shoreline, having Coordinates of X = 1,421,416.19 and Y = 404,156.84; Thence South 10,366.60 feet along the East line of said Block 2 to its Southeast Corner having Coordinates of X = 1,421,416.19 and Y = 393,790.24; Thence West 5,609.99 feet along the South line of said Block 2 to a point having Coordinates of X = 1,415,806.20 and Y = 393,790.24; Thence North 12,035.24 feet to a point on the 1975 Decree Shoreline having Coordinates of X = 1,415,806.20 and Y = 405,825.48; Thence along the said 1975 Decree Shoreline the following courses: Southeasterly on a straight line to a point having Coordinates of X = 1,416,365 and Y = 405,700 and Southeasterly on a straight line to the point of beginning, containing approximately **1,445.16 acres**, all as more particularly outlined on a plat on file in the Office of Mineral Resources, Department of Natural Resources. All bearings, distances and coordinates are based on Louisiana Coordinate System of 1927, (North or South Zone).

NOTE: The above description of the Tract nominated for lease has been provided and corrected, where required, exclusively by the nomination party. Any mineral lease selected from this Tract and awarded by the Louisiana State Mineral Board shall be without warranty of any kind, either express, implied, or statutory, including, but not limited to, the implied warranties of merchantability and fitness for a particular purpose. Should the mineral lease awarded by the Louisiana State Mineral Board be subsequently modified, cancelled or abrogated due to the existence of conflicting leases, operating agreements, private claims or other future obligations or conditions which may affect all or any portion of the leased Tract, it shall not relieve the Lessee of the obligation to pay any bonus due thereon to the Louisiana State Mineral Board, nor shall the Louisiana State Mineral Board be obligated to refund any consideration paid by the Lessor prior to such modification, cancellation, or abrogation, including, but not limited to, bonuses, rentals and royalties.

NOTE: The State of Louisiana does hereby reserve, and this lease shall be subject to, the imprescriptible right of surface use in the nature of a servitude in favor of the Department of Natural Resources, including its Offices and Commissions, for the sole purpose of implementing, constructing, servicing and maintaining approved coastal zone management and/or restoration projects. Utilization of any and all rights derived under this lease by the mineral lessee, its agents, successors or assigns, shall not interfere with nor hinder the reasonable surface use by the

Department of Natural Resources, its Offices or Commissions, as herein above reserved.

Applicant: South Louisiana Minerals, Inc.

Bidder	Cash Payment	Price/Acre	Rental	Oil	Gas	Other



P.O.B.  
X=1,421,416.19  
Y=404,156.84

CAMERON PARISH

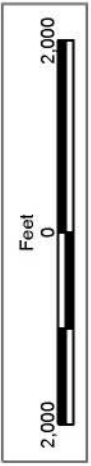
BLOCK WC0001

BLOCK WC0002

BLOCK WC0030

WEST CAMERON AREA, REVISED

BLOCK WC0029



**TRACT 37050 - Portion of Block 1, West Cameron Area, Revised, Cameron Parish, Louisiana**

The beds and bottoms of all water bodies belonging to the State of Louisiana located in Block 1, West Cameron Area, Revised, together with any present lands formed by accretion to the shoreline or islands formed therein, located in Cameron Parish, Louisiana, owned by and not presently under mineral lease as of February 9, 2005, from the State of Louisiana, the geographical area of which is more fully described as follows: Beginning at the most Easterly Northeast Corner of Block 1, West Cameron Area, Revised, also being a point on the 1975 Decree Shoreline having Coordinates of X = 1,432,326.19 and Y = 400,604.69; thence South 6,814.45 feet to a point on the South boundary of said Block 1 having Coordinates of X = 1,432,326.19 and Y = 393,790.24; thence West 10,910.00 feet along the South boundary of said Block 1 to its Southwest Corner having Coordinates of X = 1,421,416.19 and Y = 393,790.24; thence North 10,366.60 feet along the West Boundary of said Block 1 to a point on the 1975 Decree Shoreline having Coordinates of X = 1,421,416.19 and Y = 404,156.84; thence along the said 1975 Decree Shoreline the following courses and distances: Southeasterly on a straight line to a point having Coordinates of X = 1,424,630 and Y = 403,175; Southeasterly on a straight line to a point having Coordinates of X = 1,425,600 and Y = 402,610; Southeasterly on a straight line to a point having Coordinates of X = 1,429,035 and Y = 401,760; Southerly on a straight line to a point having Coordinates of X = 1,429,020 and Y = 401,485; Southeasterly on a straight line to a point having Coordinates of X = 1,431,465 and Y = 400,740; Northerly on a straight line to a point having Coordinates of X = 1,431,526 and Y = 400,742; and Southeasterly on a straight line to the point of beginning containing approximately **2,137.76 acres**, all as more particularly outlined on a plat on file in the Office of Mineral Resources, Department of Natural Resources. All bearings, distances and coordinates are based on Louisiana Coordinate System of 1927, (North or South Zone).

NOTE: The above description of the Tract nominated for lease has been provided and corrected, where required, exclusively by the nomination party. Any mineral lease selected from this Tract and awarded by the Louisiana State Mineral Board shall be without warranty of any kind, either express, implied, or statutory, including, but not limited to, the implied warranties of merchantability and fitness for a particular purpose. Should the mineral lease awarded by the Louisiana State Mineral Board be subsequently modified, cancelled or abrogated due to the existence of conflicting leases, operating agreements, private claims or other future obligations or conditions which may affect all or any portion of the leased Tract, it shall not relieve the Lessee of the obligation to pay any bonus due thereon to the Louisiana State Mineral Board, nor shall the Louisiana State Mineral Board be obligated to refund any consideration paid by the Lessor prior to such modification, cancellation, or abrogation, including, but not limited to, bonuses, rentals and royalties.

NOTE: The State of Louisiana does hereby reserve, and this lease shall be subject to, the imprescriptible right of surface use in the nature of a servitude in favor of the Department of Natural Resources, including its Offices and Commissions, for the sole purpose of implementing, constructing, servicing and maintaining approved coastal zone management and/or restoration projects. Utilization of any and all rights derived under this lease by the mineral lessee, its agents, successors or assigns, shall not interfere with nor hinder the reasonable surface use by the Department of Natural Resources, its Offices or Commissions, as herein above reserved.

Applicant: South Louisiana Minerals, Inc.

Bidder	Cash Payment	Price/Acre	Rental	Oil	Gas	Other



CAMERON PARISH

P.O.B.  
X=1,432,326.19  
Y=400,604.69

SL  
16097

SL  
12848

SL  
12725

BLOCK WC0001

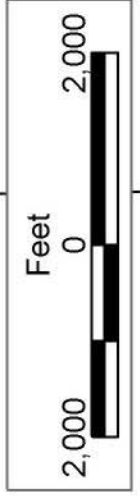
WEST CAMERON AREA, REVISED

BLOCK WC0002

BLOCK WC0030

BLOCK WC0031

BLOCK WC0029



**TRACT 37051 - Portion of Blocks 1, and 31, West Cameron Area, Revised, Cameron Parish, Louisiana**

The beds and bottoms of all water bodies belonging to the State of Louisiana located in Blocks 1, and 31, West Cameron Area, Revised, together with any present lands formed by accretion to the shoreline or islands formed therein, located in Cameron Parish, Louisiana, owned by and not presently under mineral lease as of February 9, 2005, from the State of Louisiana, the geographical area of which is more fully described as follows: Beginning at the Northeast corner of Block 31, West Cameron Area, Revised, also being a point on the 1975 Decree Shoreline having Coordinates of X = 1,449,191.95 and Y = 395,017.43; thence South 1,227.19 feet along the East Boundary of said Block 31 to a point having Coordinates of X = 1,449,191.94 and Y = 393,790.24; thence West 16,865.75 feet to a point on the South line of Block 1, West Cameron Area, Revised, having Coordinates of X = 1,432,326.19 and Y = 393,790.24; thence North 6,814.45 feet to a point on the 1975 Decree Shoreline having Coordinates of X = 1,432,326.19 and Y = 400,604.69; thence along the said 1975 Decree Shoreline the following courses: Southeasterly on a straight line to a point having Coordinates of X = 1,436,899 and Y = 399,820; and Southeasterly on a straight line to a point on the boundary of State Lease No. 12725, as amended, having Coordinates of X = 1,437,790.10 and Y = 399,495.50; thence along the Western, Southern, and Eastern boundary of said State Lease No. 12725 the following courses: South 11 degrees 18 minutes 26 seconds West 102.49 feet to a point having Coordinates of X = 1,437,770.00 and Y = 399,395.01; South 01 degrees 54 minutes 33 seconds East 300.17 feet to a point having Coordinates of X = 1,437,780.00 and Y = 399,095.00; South 14 degrees 02 minutes 10 seconds East 376.23 feet to a point having Coordinates of X = 1,437,871.25 and Y = 398,730.01; South 80 degrees 59 minutes 54 seconds East 383.47 feet to a point having Coordinates of X = 1,438,250.00 and Y = 398,670.01; South 71 degrees 50 minutes 50 seconds East 320.98 feet to a point having Coordinates of X = 1,438,555.00 and Y = 398,570.01; South 52 degrees 31 minutes 26 seconds East 378.02 feet to a point having Coordinates of X = 1,438,855.00 and Y = 398,340.01; South 42 degrees 16 minutes 25 seconds East 371.65 feet to a point having Coordinates of X = 1,439,105.00 and Y = 398,065.01; South 36 degrees 29 minutes 29 seconds East 454.01 feet to a point having Coordinates of X = 1,439,375.00 and Y = 397,700.01; South 69 degrees 01 minutes 35 seconds East 321.29 feet to a point having Coordinates of X = 1,439,675.00 and Y = 397,585.01; South 30 degrees 27 minutes 56 seconds East 98.62 feet to a point having Coordinates of X = 1,439,725.01 and Y = 397,500.00; South 71 degrees 12 minutes 54 seconds East 776.35 feet to a point having Coordinates of X = 1,440,460.00 and Y = 397,250.00; South 77 degrees 55 minutes 56 seconds East 741.38 feet to a point having Coordinates of X = 1,441,185.00 and Y = 397,095.00; East 700.00 feet to a point having Coordinates of X = 1,441,885.00 and Y = 397,095.00; North 74 degrees 14 minutes 56 seconds East 202.61 feet to a point having Coordinates of X = 1,442,080.00 and Y = 397,150.01; North 51 degrees 06 minutes 56 seconds East 199.12 feet to a point having Coordinates of X = 1,442,235.00 and Y = 397,275.00; North 33 degrees 18 minutes 38 seconds

East 209.40 feet to a point having Coordinates of X = 1,442,350.00 and Y = 397,450.00; North 03 degrees 21 minutes 59 seconds East 255.44 feet to a point having Coordinates of X = 1,442,365.00 and Y = 397,705.00; and North 18 degrees 26 minutes 06 seconds West 135.81 feet to a point on the 1975 Decree Shoreline having Coordinates of X = 1,442,322.05 and Y = 397,833.84; thence along the said 1975 Decree Shoreline the following courses: Southeasterly on a straight line to a point on the North line of said Block 31, having Coordinates of X = 1,444,715 and Y = 396,930; and Southeasterly on a straight line to the point of beginning containing approximately **1,619.25 acres**, all as more particularly outlined on a plat on file in the Office of Mineral Resources, Department of Natural Resources. All bearings, distances and coordinates are based on Louisiana Coordinate System of 1927, (North or South Zone).

NOTE: The above description of the Tract nominated for lease has been provided and corrected, where required, exclusively by the nomination party. Any mineral lease selected from this Tract and awarded by the Louisiana State Mineral Board shall be without warranty of any kind, either express, implied, or statutory, including, but not limited to, the implied warranties of merchantability and fitness for a particular purpose. Should the mineral lease awarded by the Louisiana State Mineral Board be subsequently modified, cancelled or abrogated due to the existence of conflicting leases, operating agreements, private claims or other future obligations or conditions which may affect all or any portion of the leased Tract, it shall not relieve the Lessee of the obligation to pay any bonus due thereon to the Louisiana State Mineral Board, nor shall the Louisiana State Mineral Board be obligated to refund any consideration paid by the Lessor prior to such modification, cancellation, or abrogation, including, but not limited to, bonuses, rentals and royalties.

NOTE: The State of Louisiana does hereby reserve, and this lease shall be subject to, the imprescriptible right of surface use in the nature of a servitude in favor of the Department of Natural Resources, including its Offices and Commissions, for the sole purpose of implementing, constructing, servicing and maintaining approved coastal zone management and/or restoration projects. Utilization of any and all rights derived under this lease by the mineral lessee, its agents, successors or assigns, shall not interfere with nor hinder the reasonable surface use by the Department of Natural Resources, its Offices or Commissions, as herein above reserved.



Applicant: South Louisiana Minerals, Inc.

Bidder	Cash Payment	Price/Acre	Rental	Oil	Gas	Other



CAMERON PARISH

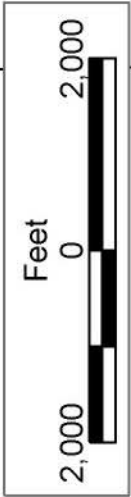
T15S - R7W

SL 16097

SL 12848

SL 12725

P.O.B.  
X=488,150.35  
Y=3,291,792.67



WEST CAMERON AREA, REVISED

BLOCK WC0031

BLOCK WC0030

BLOCK WC0001

**TRACT 37052 - Portion of Blocks 32, and 33, West Cameron Area, Revised, Cameron Parish, Louisiana**

The beds and bottoms of all water bodies belonging to the State of Louisiana located in Blocks 32, and 33, West Cameron Area, Revised, together with any present lands formed by accretion to the shoreline or islands formed therein, located in Cameron Parish, Louisiana, owned by and not presently under mineral lease as of February 9, 2005, from the State of Louisiana, the geographical area of which is more fully described as follows: Beginning at a point within Block 32, West Cameron Area, Revised, also being a point on the 1975 Decree Shoreline, having Coordinates of X = 1,454,105.00 and Y = 393,050.00; Thence South 10,015.00 feet to a point on the North boundary of State Lease No. 18237 having Coordinates of X = 1,454,105.00 and Y = 383,035.00; Thence along the Northern, Western, and Southern Boundaries of said State Lease No. 18237, the following courses: West 3,299.00 feet, South 2,275.00 feet and East 3,299.00 feet to a point having Coordinates of X = 1,454,105.00 and Y = 380,760.00; Thence South 6,666.18 feet to a point within Block 33, also being a point on the Three Mile Decree Line having Coordinates of X = 1,454,105.00 and Y = 374,093.82; Thence Northwesterly on a straight line to a point having Coordinates of X = 1,450,483.90 and Y = 375,118.34; Thence North 3,913.85 feet along the West Boundary of said Block 33 to its Northwest Corner having Coordinates of X = 1,450,483.90 and Y = 379,032.19; Thence West 1,291.95 feet along the South Boundary of said Block 32 to its Southwest Corner having Coordinates of X = 1,449,191.95 and Y = 379,032.19; Thence North 15,985.24 feet along the West line of said Block 32 to its Northwest corner located on the 1975 Decree Shoreline having Coordinates of X = 1,449,191.95 and Y = 395,017.43; Thence along the said 1975 Decree Shoreline the following courses: Southeasterly on a straight line to a point having Coordinates of X = 1,449,935 and Y = 394,700; and Southeasterly on a straight line to the point of beginning, containing approximately **1,886.51 acres, LESS AND EXCEPT** that portion thereof, if any, lying seaward of the line three nautical miles from the coast line of Louisiana, as said three mile line has been decreed by the Supreme Court of the United States, as determined by a Special Master appointed therein, in litigation styled **United States v. State of Louisiana et al No. 9 Original**, in 1975, all as more particularly outlined on a plat in the Office of Mineral Resources, Department of Natural Resources. All bearings, distances and coordinates are based on the Louisiana Coordinate System of 1927, (South Zone).

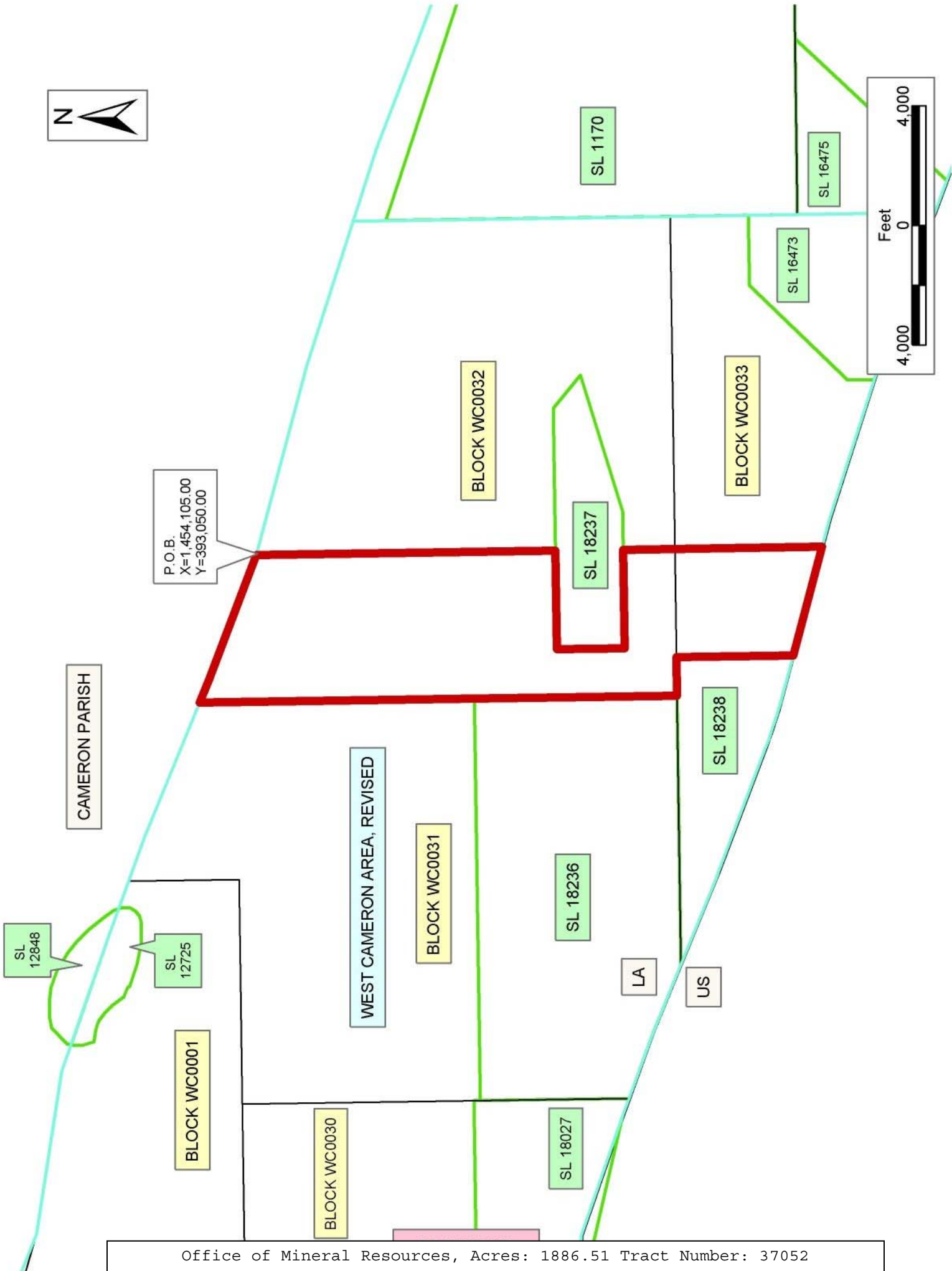
NOTE: The above description of the Tract nominated for lease has been provided and corrected, where required, exclusively by the nomination party. Any mineral lease selected from this Tract and awarded by the Louisiana State Mineral Board shall be without warranty of any kind, either express, implied, or statutory, including, but not limited to, the implied warranties of merchantability and fitness for a particular purpose. Should the mineral lease awarded by the Louisiana State Mineral Board be subsequently modified, cancelled or abrogated due to the existence of conflicting leases, operating agreements, private claims or

other future obligations or conditions which may affect all or any portion of the leased Tract, it shall not relieve the Lessee of the obligation to pay any bonus due thereon to the Louisiana State Mineral Board, nor shall the Louisiana State Mineral Board be obligated to refund any consideration paid by the Lessor prior to such modification, cancellation, or abrogation, including, but not limited to, bonuses, rentals and royalties.

NOTE: The State of Louisiana does hereby reserve, and this lease shall be subject to, the imprescriptible right of surface use in the nature of a servitude in favor of the Department of Natural Resources, including its Offices and Commissions, for the sole purpose of implementing, constructing, servicing and maintaining approved coastal zone management and/or restoration projects. Utilization of any and all rights derived under this lease by the mineral lessee, its agents, successors or assigns, shall not interfere with nor hinder the reasonable surface use by the Department of Natural Resources, its Offices or Commissions, as herein above reserved.

Applicant: South Louisiana Minerals, Inc.

Bidder	Cash Payment	Price/Acre	Rental	Oil	Gas	Other



**TRACT 37053 - Portion of Block 29, West Cameron Area, Revised, Cameron Parish, Louisiana**

The beds and bottoms of all water bodies belonging to the State of Louisiana located in Block 29, West Cameron Area, Revised, together with any present lands formed by accretion to the shoreline or islands formed therein, located in Cameron Parish, Louisiana, owned by and not presently under mineral lease as of February 9, 2005, from the State of Louisiana, the geographical area of which is more fully described as follows: Beginning at the Northeast corner of Block 29, West Cameron Area, Revised, having Coordinates of X = 1,420,967.81 and Y = 393,790.24; thence South 8,822.87 feet along the East line of said Block 29 to a point on the Three Mile Decree Line having Coordinates of X = 1,420,967.81 and Y = 384,967.37; thence along the said Three Mile Decree Line the following courses: Northwesterly on an arc having a radius of 18,240.60 feet and a center at X = 1,425,600 and Y = 402,610 to a point having Coordinates of X = 1,417,428 and Y = 386,302; Northwesterly on a straight line to a point having Coordinates of X = 1,411,695 and Y = 388,054; Northwesterly on a straight line to a point having Coordinates of X = 1,406,675 and Y = 389,181; Northwesterly on a straight line to a point on the West line of said Block 29 having Coordinates of X = 1,406,209.76 and Y = 389,258.53; Thence North 4,531.71 feet along the West line of said Block 29 to its Northwest corner having Coordinates of X = 1,406,209.76 and Y = 393,790.24; Thence East 14,758.05 feet along the North line of said Block 29 to the point of beginning, containing approximately **2,183.63 acres, LESS AND EXCEPT** that portion thereof, if any, lying seaward of the line three nautical miles from the coast line of Louisiana, as said three mile line has been decreed by the Supreme Court of the United States, as determined by a Special Master appointed therein, in litigation styled **United States v. State of Louisiana et al No. 9 Original**, in 1975, all as more particularly outlined on a plat in the Office of Mineral Resources, Department of Natural Resources. All bearings, distances and coordinates are based on the Louisiana Coordinate System of 1927, (South Zone).

NOTE: The above description of the Tract nominated for lease has been provided and corrected, where required, exclusively by the nomination party. Any mineral lease selected from this Tract and awarded by the Louisiana State Mineral Board shall be without warranty of any kind, either express, implied, or statutory, including, but not limited to, the implied warranties of merchantability and fitness for a particular purpose. Should the mineral lease awarded by the Louisiana State Mineral Board be subsequently modified, cancelled or abrogated due to the existence of conflicting leases, operating agreements, private claims or other future obligations or conditions which may affect all or any portion of the leased Tract, it shall not relieve the Lessee of the obligation to pay any bonus due thereon to the Louisiana State Mineral Board, nor shall the Louisiana State Mineral Board be obligated to refund any consideration paid by the Lessor prior to such modification, cancellation, or abrogation, including, but not limited to, bonuses, rentals and royalties.

NOTE: The State of Louisiana does hereby reserve, and this lease shall be subject to, the imprescriptible right of surface use in the nature of a servitude in favor of the Department of Natural Resources, including its Offices and Commissions, for the sole purpose of implementing, constructing, servicing and maintaining approved coastal zone management and/or restoration projects. Utilization of any and all rights derived under this lease by the mineral lessee, its agents, successors or assigns, shall not interfere with nor hinder the reasonable surface use by the Department of Natural Resources, its Offices or Commissions, as herein above reserved.

Applicant: South Louisiana Minerals, Inc.

Bidder	Cash Payment	Price/Acre	Rental	Oil	Gas	Other



P.O.B.  
X=1,420,967.81  
Y=393,790.24

BLOCK WC0002

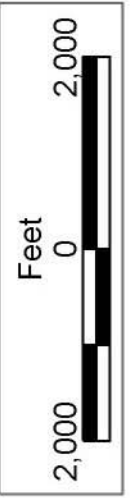
BLOCK WC0029

WEST CAMERON AREA, REVISED

CAMERON PARISH

LA

US





**TRACT 37054 - Portion of Block 30, West Cameron Area, Revised, Cameron Parish, Louisiana**

The beds and bottoms of all water bodies belonging to the State of Louisiana located in Block 30, West Cameron Area, Revised, together with any present lands formed by accretion to the shoreline or islands formed therein, located in Cameron Parish, Louisiana, owned by and not presently under mineral lease as of February 9, 2005, from the State of Louisiana, the geographical area of which is more fully described as follows: Beginning at the Northeast Corner of Block 30, West Cameron Area, Revised, having Coordinates of X = 1,435,725.87 and Y = 393,790.24; thence South 3,986.53 feet along the East Boundary of said Block 30 to a point having Coordinates of X = 1,435,725.87 and Y = 389,803.71; thence West 14,758.06 feet to a point on the West Boundary of said Block 30 having Coordinates of X = 1,420,967.81 and Y = 389,803.71; thence North 3,986.53 feet along the West Boundary of said Block 30 to its Northwest Corner having Coordinates of X = 1,420,967.81 and Y = 393,790.24; thence East 14,758.06 feet along the North Boundary of said Block 30 to the point of beginning, containing approximately **1,350.63 acres**, all as more particularly outlined on a plat on file in the Office of Mineral Resources, Department of Natural Resources. All bearings, distances and coordinates are based on Louisiana Coordinate System of 1927, (North or South Zone).

NOTE: The above description of the Tract nominated for lease has been provided and corrected, where required, exclusively by the nomination party. Any mineral lease selected from this Tract and awarded by the Louisiana State Mineral Board shall be without warranty of any kind, either express, implied, or statutory, including, but not limited to, the implied warranties of merchantability and fitness for a particular purpose. Should the mineral lease awarded by the Louisiana State Mineral Board be subsequently modified, cancelled or abrogated due to the existence of conflicting leases, operating agreements, private claims or other future obligations or conditions which may affect all or any portion of the leased Tract, it shall not relieve the Lessee of the obligation to pay any bonus due thereon to the Louisiana State Mineral Board, nor shall the Louisiana State Mineral Board be obligated to refund any consideration paid by the Lessor prior to such modification, cancellation, or abrogation, including, but not limited to, bonuses, rentals and royalties.

NOTE: The State of Louisiana does hereby reserve, and this lease shall be subject to, the imprescriptible right of surface use in the nature of a servitude in favor of the Department of Natural Resources, including its Offices and Commissions, for the sole purpose of implementing, constructing, servicing and maintaining approved coastal zone management and/or restoration projects. Utilization of any and all rights derived under this lease by the mineral lessee, its agents, successors or assigns, shall not interfere with nor hinder the reasonable surface use by the Department of Natural Resources, its Offices or Commissions, as herein above reserved.

Applicant: South Louisiana Minerals, Inc.

Bidder	Cash Payment	Price/Acre	Rental	Oil	Gas	Other



CAMERON PARISH

BLOCK WC0001

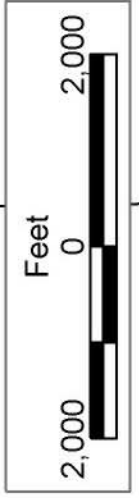
P.O.B.  
X=1,435,725.87  
Y=393,790.24

WEST CAMERON AREA, REVISED

BLOCK WC0030

BLOCK WC0002

BLOCK WC0029



**TRACT 37055 - Portion of Block 31, West Cameron Area, Revised, Cameron Parish, Louisiana**

The beds and bottoms of all water bodies belonging to the State of Louisiana located in Block 31, West Cameron Area, Revised, together with any present lands formed by accretion to the shoreline or islands formed therein, located in Cameron Parish, Louisiana, owned by and not presently under mineral lease as of February 9, 2005, from the State of Louisiana, the geographical area of which is more fully described as follows: Beginning at a point on the East line of Block 31, West Cameron Area, Revised, having Coordinates of X = 1,449,191.95 and Y = 393,790.24; thence South 7,973.05 feet along the East line of said Block 31 to the Northeast Corner of State Lease No. 18236, as amended, having Coordinates of X = 1,449,191.95 and Y = 385,817.19; Thence West 13,466.09 feet along the North Boundary of said State Lease No. 18236 to its Northwest Corner said point is located on the West line of said Block 31 having Coordinates of X = 1,435,725.86 and Y = 385,817.19; Thence North 7,973.05 feet along the West line of said Block 31 to its Northwest corner having Coordinates of X = 1,435,725.86 and Y = 393,790.24; Thence East 13,466.09 feet to the point of beginning, containing approximately **2,464.78 acres**, all as more particularly outlined on a plat on file in the Office of Mineral Resources, Department of Natural Resources. All bearings, distances and coordinates are based on Louisiana Coordinate System of 1927, (North or South Zone).

NOTE: The above description of the Tract nominated for lease has been provided and corrected, where required, exclusively by the nomination party. Any mineral lease selected from this Tract and awarded by the Louisiana State Mineral Board shall be without warranty of any kind, either express, implied, or statutory, including, but not limited to, the implied warranties of merchantability and fitness for a particular purpose. Should the mineral lease awarded by the Louisiana State Mineral Board be subsequently modified, cancelled or abrogated due to the existence of conflicting leases, operating agreements, private claims or other future obligations or conditions which may affect all or any portion of the leased Tract, it shall not relieve the Lessee of the obligation to pay any bonus due thereon to the Louisiana State Mineral Board, nor shall the Louisiana State Mineral Board be obligated to refund any consideration paid by the Lessor prior to such modification, cancellation, or abrogation, including, but not limited to, bonuses, rentals and royalties.

NOTE: The State of Louisiana does hereby reserve, and this lease shall be subject to, the imprescriptible right of surface use in the nature of a servitude in favor of the Department of Natural Resources, including its Offices and Commissions, for the sole purpose of implementing, constructing, servicing and maintaining approved coastal zone management and/or restoration projects. Utilization of any and all rights derived under this lease by the mineral lessee, its agents, successors or assigns, shall not interfere with nor hinder the reasonable surface use by the

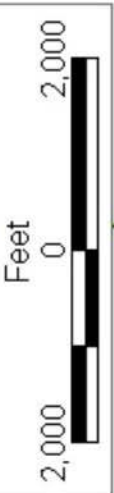
Department of Natural Resources, its Offices or Commissions, as herein above reserved.

Applicant: South Louisiana Minerals, Inc.

Bidder	Cash Payment	Price/Acre	Rental	Oil	Gas	Other



P.O.B.  
X=1,449,191.95  
Y=393,790.24



SL 12848

SL 12725

WEST CAMERON AREA, REVISED

CAMERON PARISH

BLOCK WC0031

SL 18236

SL 18027

**TRACT 37056 - Portion of Block 30, West Cameron Area, Revised, Cameron Parish, Louisiana**

The beds and bottoms of all water bodies belonging to the State of Louisiana located in Block 30, West Cameron Area, Revised, together with any present lands formed by accretion to the shoreline or islands formed therein, located in Cameron Parish, Louisiana, owned by and not presently under mineral lease as of February 9, 2005, from the State of Louisiana, the geographical area of which is more fully described as follows: Beginning at a point on the East Boundary of Block 30, West Cameron Area, Revised, having Coordinates of X = 1,435,725.87 and Y = 389,803.71; thence South 3,771.52 feet along the East Boundary of said Block 30 to the Northeast Corner of State Lease No. 18027, having Coordinates of X = 1,435,725.86 and Y = 386,032.19; thence West 9,000.00 feet along the North Boundary of said State Lease No. 18027 to its Northwest Corner having Coordinates of X = 1,426,725.86 and Y = 386,032.19; thence South 2,906.88 feet along the West Boundary of said State Lease No. 18027 to a point on the Three Mile Decree Line and the Southwest Corner of said State Lease No. 18027 having Coordinates of X = 1,426,725.86 and Y = 383,125.31; thence along the said Three Mile Decree Line the following courses: Northwesterly on an arc having a radius of 18,240.60 feet and a center at X = 1,431,427.00 and Y = 400,611.00 to a point having Coordinates of X = 1,426,148.00 and Y = 383,291.00; North 73 degrees 03 minutes 14 seconds West 2,555.98 feet to a point having Coordinates of X = 1,423,703.00 and Y = 384,036.00; Northwesterly on an arc having a radius of 18,240.60 feet and a center at X = 1,428,973.00 and Y = 401,346.00 to a point having Coordinates of X = 1,421,665.00 and Y = 384,793.00; North 76 degrees 10 minutes 30 seconds West 460.34 feet to a point having Coordinates of X = 1,421,218.00 and Y = 384,903.00; Northwesterly on an arc having a radius of 18,240.60 feet and a center at X = 1,432,605.00 and Y = 429,680.00 to a point on the West Boundary of said Block 30 having Coordinates of X = 1,420,967.81 and Y = 384,967.37; thence North 4,836.34 feet along the West Boundary of said Block 30 to a point having Coordinates of X = 1,420,967.81 and Y = 389,803.71; thence East 14,758.06 feet to the point of beginning, containing approximately **1543.45 acres, LESS AND EXCEPT** that portion thereof, if any, lying seaward of the line three nautical miles from the coast line of Louisiana, as said three mile line has been decreed by the Supreme Court of the United States, as determined by a Special Master appointed therein, in litigation styled **United States v. State of Louisiana et al No. 9 Original**, in 1975, all as more particularly outlined on a plat in the Office of Mineral Resources, Department of Natural Resources. All bearings, distances and coordinates are based on the Louisiana Coordinate System of 1927, (South Zone).

NOTE: The above description of the Tract nominated for lease has been provided and corrected, where required, exclusively by the nomination party. Any mineral lease selected from this Tract and awarded by the Louisiana State Mineral Board shall be without warranty of any kind, either express, implied, or statutory, including, but not limited to, the implied warranties of merchantability and fitness for a particular

purpose. Should the mineral lease awarded by the Louisiana State Mineral Board be subsequently modified, cancelled or abrogated due to the existence of conflicting leases, operating agreements, private claims or other future obligations or conditions which may affect all or any portion of the leased Tract, it shall not relieve the Lessee of the obligation to pay any bonus due thereon to the Louisiana State Mineral Board, nor shall the Louisiana State Mineral Board be obligated to refund any consideration paid by the Lessor prior to such modification, cancellation, or abrogation, including, but not limited to, bonuses, rentals and royalties.

NOTE: The State of Louisiana does hereby reserve, and this lease shall be subject to, the imprescriptible right of surface use in the nature of a servitude in favor of the Department of Natural Resources, including its Offices and Commissions, for the sole purpose of implementing, constructing, servicing and maintaining approved coastal zone management and/or restoration projects. Utilization of any and all rights derived under this lease by the mineral lessee, its agents, successors or assigns, shall not interfere with nor hinder the reasonable surface use by the Department of Natural Resources, its Offices or Commissions, as herein above reserved.

Applicant: South Louisiana Minerals, Inc.

Bidder	Cash Payment	Price/Acre	Rental	Oil	Gas	Other





CAMERON PARISH

WEST CAMERON AREA, REVISED

P.O.B.  
X=1,435,725.87  
Y=389,803.71

BLOCK WVC0030

BLOCK WVC0031

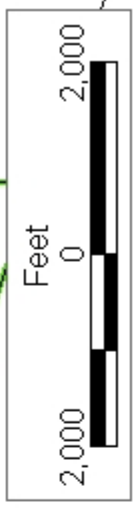
SL 18236

SL 18027

BLOCK WVC0029

LA

US



**TRACT 37057 - Portion of Blocks 12, 13, 8, and 9, Vermilion Area, Revised, Vermilion Parish, Louisiana**

The beds and bottoms of all water bodies belonging to the State of Louisiana located in Blocks 12, 13, 8, and 9, Vermilion Area, Revised, together with any present lands formed by accretion to the shoreline or islands formed therein, located in Vermilion Parish, Louisiana, owned by and not presently under mineral lease as of February 9, 2005, from the State of Louisiana, the geographical area of which is more fully described as follows: Beginning at the Northeast Corner of State Lease No. 17058, a point on the shoreline and the North line of Block 8, Vermilion Area, Revised, having Coordinates of X = 1,700,680.00 and Y = 316,390.00; thence Northeasterly along a straight line to a point having Coordinates of X = 1,703,080 and Y = 316,885; thence Northeasterly along a straight line to the Northeast corner of said Block 8 and the Northwest corner of said Block 9 having Coordinates of X = 1,706,414.36 and Y = 317,770.27; thence Northeasterly along a straight line to a point having Coordinates of X = 1,706,790.00 and Y = 317,870.00; thence Northeasterly along a straight line to a point having Coordinates of X = 1,708,756.00 and Y = 318,661.00; thence Northeasterly along a straight line to a point having Coordinates of X = 1,709,968.00 and Y = 319,818.00; thence Northeasterly along a straight line to the most Western point of State Lease No. 18180 having Coordinates of X = 1,711,037.92 and Y = 320,545.19; thence along the southern boundary of said State Lease No. 18180 South 78 degrees 13 minutes 41 seconds East 2,039.98 feet to its Southeast corner and a point on the West line of State Lease No. 18179 having Coordinates of X = 1,713,035.00 and Y = 320,129.00; thence South 549.00 feet along the West line of said State Lease No. 18179 to its Southwest corner having Coordinates of X = 1,713,035.00 and Y = 319,580.00; thence continue South 8,555.23 feet to a point within Block 12, having Coordinates of X = 1,713,035.00 and Y = 311,024.77; thence West 6,620.64 feet to a point on the West line of said Block 12, the Northeast corner of said Block 13 and the Southeast corner of said Block 8 having Coordinates of X = 1,706,414.36 and Y = 311,024.77; thence South 3,308.33 feet to a point having Coordinates of X = 1,706,414.36 and Y = 307,716.44; thence West 5,734.36 feet to a point having Coordinates of X = 1,700,680.00 and Y = 307,716.44; thence North 3,308.33 feet to a point on the North line of said Block 13, the South line of said Block 8 and the Southeast corner of said State Lease No. 17058 having Coordinates of X = 1,700,680.00 and Y = 311,024.77; thence North 5,365.23 feet along the East line of said State Lease No. 17058 to the point of beginning, containing approximately **2,493.03 acres**, all as more particularly outlined on a plat on file in the Office of Mineral Resources, Department of Natural Resources. All bearings, distances and coordinates are based on Louisiana Coordinate System of 1927, (North or South Zone).

NOTE: The above description of the Tract nominated for lease has been provided and corrected, where required, exclusively by the nomination party. Any mineral lease selected from this Tract and awarded by the Louisiana State Mineral Board shall be without warranty of any kind,

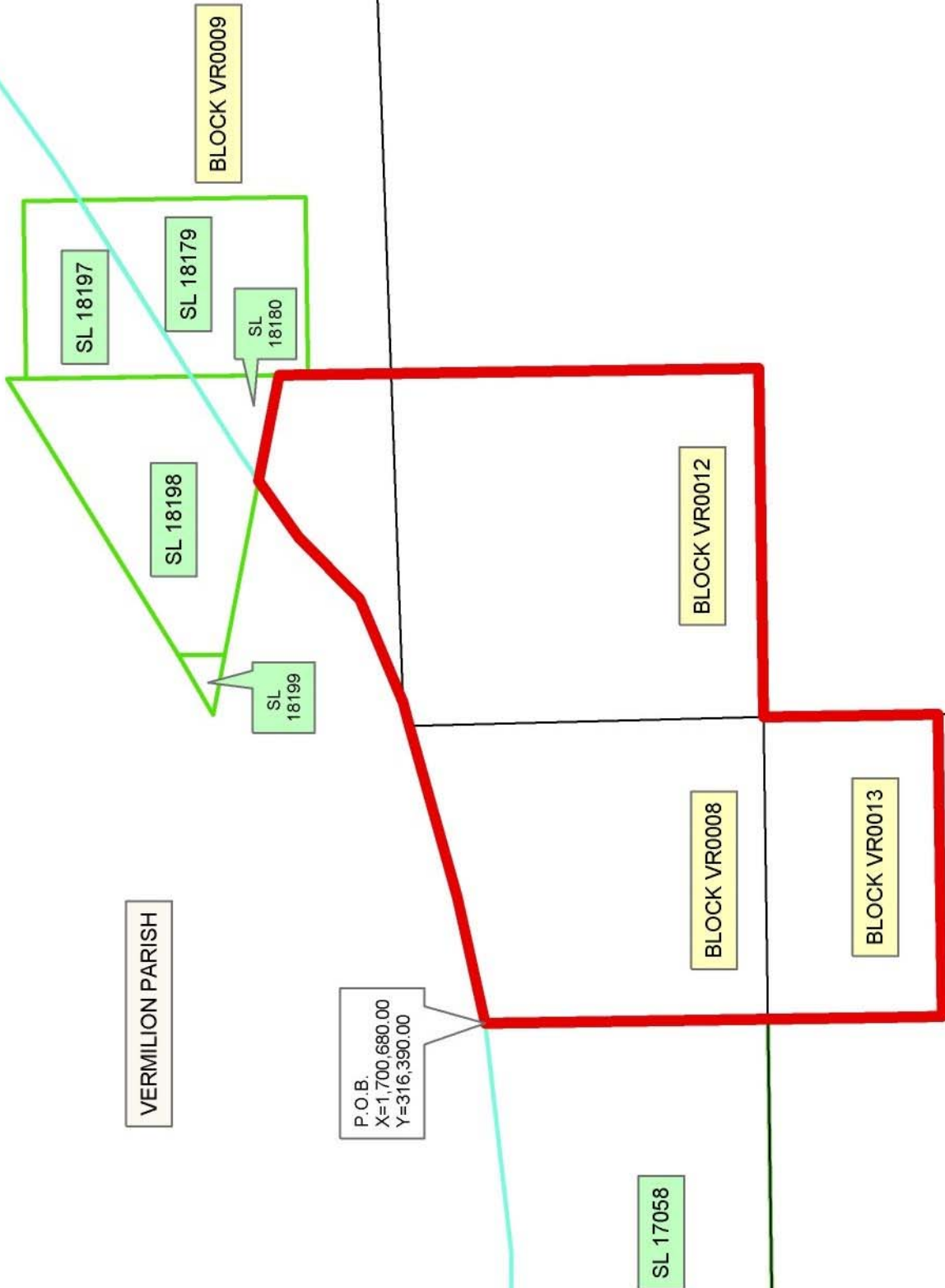
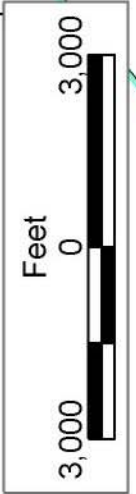
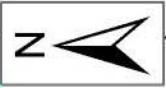
either express, implied, or statutory, including, but not limited to, the implied warranties of merchantability and fitness for a particular purpose. Should the mineral lease awarded by the Louisiana State Mineral Board be subsequently modified, cancelled or abrogated due to the existence of conflicting leases, operating agreements, private claims or other future obligations or conditions which may affect all or any portion of the leased Tract, it shall not relieve the Lessee of the obligation to pay any bonus due thereon to the Louisiana State Mineral Board, nor shall the Louisiana State Mineral Board be obligated to refund any consideration paid by the Lessor prior to such modification, cancellation, or abrogation, including, but not limited to, bonuses, rentals and royalties.

NOTE: The State of Louisiana does hereby reserve, and this lease shall be subject to, the imprescriptible right of surface use in the nature of a servitude in favor of the Department of Natural Resources, including its Offices and Commissions, for the sole purpose of implementing, constructing, servicing and maintaining approved coastal zone management and/or restoration projects. Utilization of any and all rights derived under this lease by the mineral lessee, its agents, successors or assigns, shall not interfere with nor hinder the reasonable surface use by the Department of Natural Resources, its Offices or Commissions, as herein above reserved.

NOTE: The Department of Wildlife and Fisheries has designated certain areas in the coastal waters of the State of Louisiana as Oyster Seed Bed Areas. The exact location of those Seed Bed Areas must be obtained from the Department of Wildlife and Fisheries and any work done under a mineral lease from the State of Louisiana may necessarily be conducted in conformity with the rules and regulations promulgated by the said Department of Wildlife and Fisheries for Oyster Seed Bed Areas.

Applicant: Cypress Energy Corporation

Bidder	Cash Payment	Price/Acre	Rental	Oil	Gas	Other



**TRACT 37058 - Portion of Blocks 15, 6, and 7, Vermilion Area, Revised, Vermilion Parish, Louisiana**

The beds and bottoms of all water bodies belonging to the State of Louisiana located in Blocks 15, 6, and 7, Vermilion Area, Revised, together with any present lands formed by accretion to the shoreline or islands formed therein, located in Vermilion Parish, Louisiana, owned by and not presently under mineral lease as of February 9, 2005, from the State of Louisiana, the geographical area of which is more fully described as follows: Beginning at the Northeast corner of Block 6 and the Northwest corner of Block 7, Vermilion Area, Revised, having Coordinates of X = 1,676,898.27 and Y = 318,813.64; thence Southeasterly on a straight line to a point having Coordinates of X = 1,678,545 and Y = 318,408; thence Southeasterly on a straight line to a point having Coordinates of X = 1,687,270 and Y = 316,510; thence Southeasterly on a straight line to a point having Coordinates of X = 1,688,922.80 and Y = 316,302.64; thence South 249.23 feet to a point on the North line of State Lease No. 16672 having Coordinates of X = 1,688,922.80 and Y = 316,053.41; thence along the boundaries of said State Lease No. 16672 the following: West 12,024.53 feet and South 5,028.64 feet to its Southwest corner, also being the Northeast corner of said Block 15 having Coordinates of X = 1,676,898.27 and Y = 311,024.77; thence South 2,450.00 feet along the East line of said Block 15 to a point having Coordinates of X = 1,676,898.27 and Y = 308,574.77; thence West 6,455.47 feet along the North Line of said State Lease No. 15040 to a point having Coordinates of X = 1,670,442.80 and Y = 308,574.77; thence North 00 degrees 09 minutes 00 seconds East 12,003.70 feet to a point on the North line of said Block 6 having Coordinates of X = 1,670,474.24 and Y = 320,578.43; thence Southeasterly on a straight line to a point having Coordinates of X = 1,671,018 and Y = 320,396; thence Southeasterly on a straight line to a point having Coordinates of X = 1,675,346 and Y = 319,196; thence Southeasterly on a straight line to the point of beginning, containing approximately **2,031.23 acres**, all as more particularly outlined on a plat on file in the Office of Mineral Resources, Department of Natural Resources. All bearings, distances and coordinates are based on Louisiana Coordinate System of 1927, (North or South Zone).

NOTE: The above description of the Tract nominated for lease has been provided and corrected, where required, exclusively by the nomination party. Any mineral lease selected from this Tract and awarded by the Louisiana State Mineral Board shall be without warranty of any kind, either express, implied, or statutory, including, but not limited to, the implied warranties of merchantability and fitness for a particular purpose. Should the mineral lease awarded by the Louisiana State Mineral Board be subsequently modified, cancelled or abrogated due to the existence of conflicting leases, operating agreements, private claims or other future obligations or conditions which may affect all or any portion of the leased Tract, it shall not relieve the Lessee of the obligation to pay any bonus due thereon to the Louisiana State Mineral Board, nor shall the Louisiana State Mineral Board be obligated to refund any consideration

paid by the Lessor prior to such modification, cancellation, or abrogation, including, but not limited to, bonuses, rentals and royalties.

NOTE: The State of Louisiana does hereby reserve, and this lease shall be subject to, the imprescriptible right of surface use in the nature of a servitude in favor of the Department of Natural Resources, including its Offices and Commissions, for the sole purpose of implementing, constructing, servicing and maintaining approved coastal zone management and/or restoration projects. Utilization of any and all rights derived under this lease by the mineral lessee, its agents, successors or assigns, shall not interfere with nor hinder the reasonable surface use by the Department of Natural Resources, its Offices or Commissions, as herein above reserved.

NOTE: The Department of Wildlife and Fisheries has designated certain areas in the coastal waters of the State of Louisiana as Oyster Seed Bed Areas. The exact location of those Seed Bed Areas must be obtained from the Department of Wildlife and Fisheries and any work done under a mineral lease from the State of Louisiana may necessarily be conducted in conformity with the rules and regulations promulgated by the said Department of Wildlife and Fisheries for Oyster Seed Bed Areas.

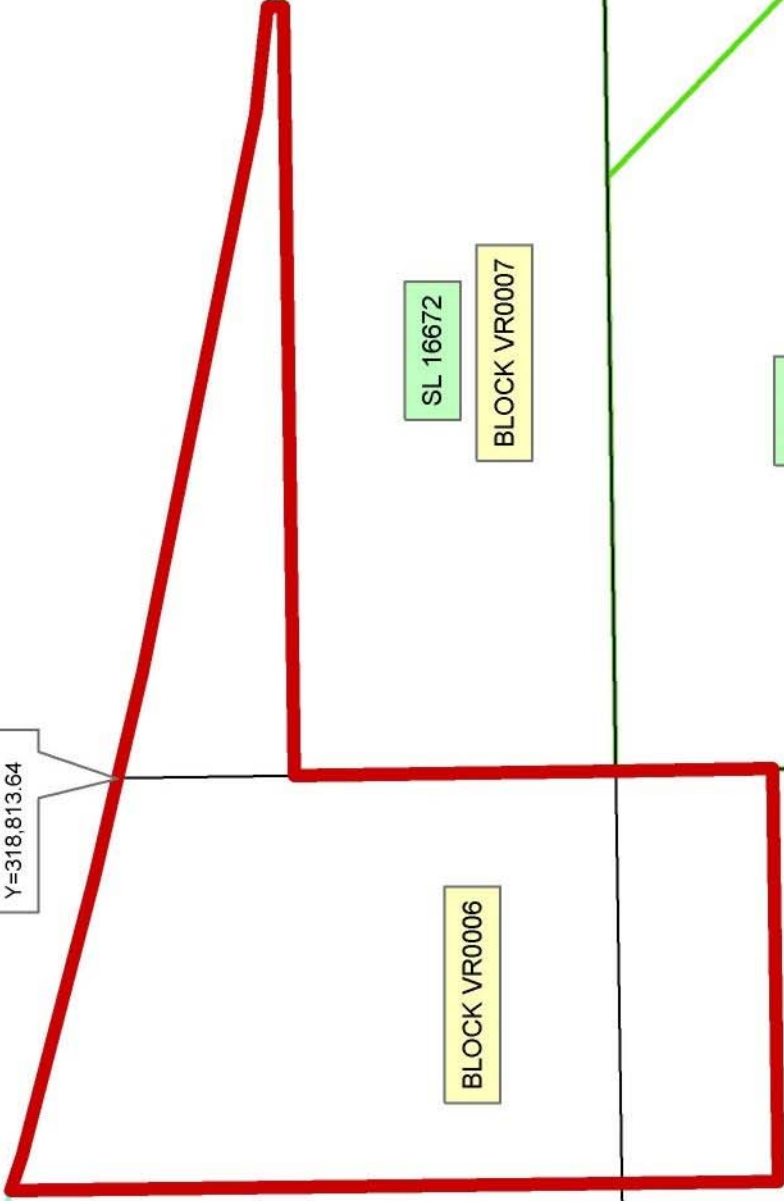
Applicant: Cypress Energy Corporation

Bidder	Cash Payment	Price/Acre	Rental	Oil	Gas	Other



VERMILION PARISH

P.O.B.  
X=1,676,898.27  
Y=318,813.64



SL 16672  
BLOCK VR0007

SL 861  
BLOCK VR0014

BLOCK VR0006

BLOCK VR0015  
VERMILION AREA, REVISED

SL 862

