

**TRACT 36103 - Jefferson and Plaquemines Parishes, Louisiana**

All of the lands now or formerly constituting the beds and bottoms of all water bodies of every nature and description the title of which vests in the State of Louisiana, together with all islands arising therein and other lands formed by accretion or by reliction, where allowed by law, excepting tax adjudicated lands, and not presently under mineral lease on February 11, 2004, situated in Jefferson and Plaquemines Parishes, Louisiana, and more particularly described as follows: Beginning at a point having Coordinates of X = 2,430,500.00 and Y = 288,730.00; thence North 1,278.80 feet to a point on the South Line of State Lease No. 15858, as amended having Coordinates of X = 2,430,500.00 and Y = 290,008.80; thence along the boundaries of said State Lease No. 15858, State Lease No. 16007, as amended and State Lease No. 16006, as amended the following: along a curve having a radius of 1,760.00 feet, a center of X = 2,429,853.93 and Y = 291,645.93 to a point having Coordinates of X = 2,430,917.06 and Y = 290,243.31, along a curve having a radius of 1,686.00 feet, a center of X = 2,430,000.21 and Y = 291,658.22 to a point having Coordinates of X = 2,431,623.62 and Y = 291,203.10, along a curve having a radius of 4,000.00 feet, a center of X = 2,427,673.35 and Y = 291,831.92 to a point having Coordinates of X = 2,431,547.41 and Y = 292,827.75 and North 68 degrees 32 minutes 33 seconds West 1,125.41 feet, being a point on the North Line of said State Lease No. 16006, having Coordinates of X = 2,430,500.00 and Y = 293,239.44; thence North 2,760.56 feet to a point having Coordinates of X = 2,430,500.00 and Y = 296,000.00; thence East 4,197.68 feet to a point on the West Line of State Lease No. 13407, as amended having Coordinates of X = 2,434,697.68 and Y = 296,000.00; thence along the boundary of said State Lease No. 13407 the following: along a curve having a radius of 1,400.00 feet, a center of X = 2,435,752.42 and Y = 295,079.39 to a point having Coordinates of X = 2,434,567.49 and Y = 295,825.00, South 30 degrees 11 minutes 16 seconds West 431.28 feet, North 63 degrees 00 minutes 00 seconds West 876.05 feet, South 27 degrees 00 minutes 00 seconds West 1,253.00 feet, South 63 degrees 00 minutes 00 seconds East 546.00 feet to a point having Coordinates of X = 2,433,487.70 and Y = 294,485.63, along a curve having a radius of 5,000.00 feet, a center of X = 2,430,272.09 and Y = 298,314.44 to a point having Coordinates of X = 2,432,620.00 and Y = 293,900.00, South 72 degrees 32 minutes 30 seconds West 963.77 feet, South 1,400.00 feet, East 1,574.75 feet, South 21 degrees 12 minutes 23 seconds East 259.04 feet, South 69 degrees 10 minutes 45 seconds East 814.07 feet to a point having Coordinates of X = 2,434,129.99 and Y = 291,680.00, along a curve having a radius of 13,000.00 feet, a center of X = 2,424,693.15 and Y = 300,621.26 to a point having Coordinates of X = 2,436,414.99 and Y = 295,000.00, North 25 degrees 51 minutes 20 seconds East 1,111.23 to a point on the East Line of said State Lease No. 13407 having Coordinates of X = 2,436,899.60 and Y = 296,000.00; thence East 5,887.47 feet to a point having Coordinates of X = 2,442,787.07 and Y = 296,000.00; thence along a curve having a radius of 3,800.00 feet, a center of X = 2,445,927.79 and Y = 293,860.88 to a point having Coordinates of X = 2,442,689.99 and Y = 295,850.00, said point being the Northwest corner of State Lease No.

11036, thence along the boundaries of said State Lease No. 11036, and State Lease No. 12721, as amended the following: along a curve having a radius of 10,600.00 feet, a center of X = 2,452,088.69 and Y = 290,948.53 to a point having Coordinates of X = 2,442,074.99 and Y = 294,425.00, along a curve having a radius of X = 2,000.00 feet, a center of X = 2,443,958.82 and Y = 293,753.30 to a point having Coordinates of X = 2,442,149.99 and Y = 292,900.00, along a curve having a radius of 5,000.00 feet, a center of X = 2,446,650.89 and Y = 295,077.59 to a point having Coordinates of X = 2,442,874.99 and Y = 291,800.00, along a curve having a radius of 12,500.00 feet, a center of X = 2,451,934.54 and Y = 300,412.46 to a point having Coordinates of X = 2,443,762.53 and Y = 290,953.70, South 45 degrees 26 minutes 04 seconds East 727.91, South 06 degrees 23 minutes 00 seconds East 977.52 feet and North 83 degrees 37 minutes 00 seconds East 1,418.98 feet to a point on the South Line of said State Lease No. 12721 having Coordinates of X = 2,445,800.00 and Y = 289,629.21; thence South 899.21 feet to a point having Coordinates of X = 2,445,800.00 and Y = 288,730.00; thence West 15,300.00 feet to the Point of Beginning, containing approximately **950 acres**, all as more particularly outlined on a plat on file in the Office of Mineral Resources, Department of Natural Resources. All bearings, distances and coordinates are based on Louisiana Coordinate System of 1927, (North or South Zone), where applicable.

NOTE: The above description of the Tract nominated for lease has been provided and corrected, where required, exclusively by the nomination party. Any mineral lease selected from this Tract and awarded by the Louisiana State Mineral Board shall be without warranty of any kind, either express, implied, or statutory, including, but not limited to, the implied warranties of merchantability and fitness for a particular purpose. Should the mineral lease awarded by the Louisiana State Mineral Board be subsequently modified, cancelled or abrogated due to the existence of conflicting leases, operating agreements, private claims or other future obligations or conditions which may affect all or any portion of the leased Tract, it shall not relieve the Lessee of the obligation to pay any bonus due thereon to the Louisiana State Mineral Board, nor shall the Louisiana State Mineral Board be obligated to refund any consideration paid by the Lessor prior to such modification, cancellation, or abrogation, including, but not limited to, bonuses, rentals and royalties.

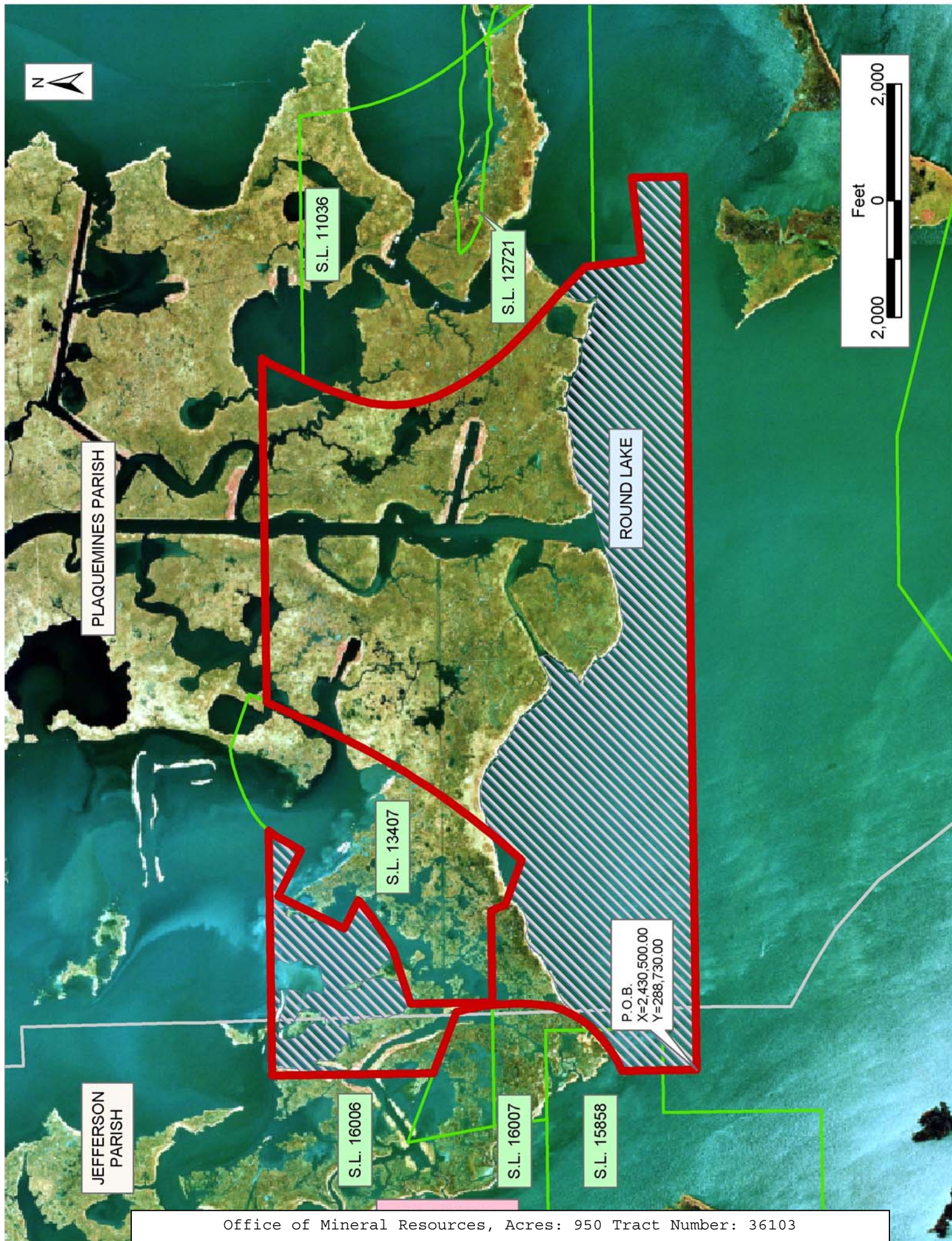
NOTE: The State of Louisiana does hereby reserve, and this lease shall be subject to, the imprescriptible right of surface use in the nature of a servitude in favor of the Department of Natural Resources, including its Offices and Commissions, for the sole purpose of implementing, constructing, servicing and maintaining approved coastal zone management and/or restoration projects. Utilization of any and all rights derived under this lease by the mineral lessee, its agents, successors or assigns, shall not interfere with nor hinder the reasonable surface use by the Department of Natural Resources, its Offices or Commissions, as herein above reserved.

NOTE: The Department of Wildlife and Fisheries has designated certain areas in the coastal waters of the State of Louisiana as Oyster Seed Bed Areas. The exact location of those Seed Bed Areas must be obtained from the Department of Wildlife and Fisheries and any work done under a mineral lease from the State of Louisiana may necessarily be conducted in conformity with the rules and regulations promulgated by the said Department of Wildlife and Fisheries for Oyster Seed Bed Areas.

Applicant: Cummings Energy

Bidder	Cash Payment	Price/Acre	Rental	Oil	Gas	Other





PLAQUEMINES PARISH

ROUND LAKE

JEFFERSON PARISH

S.L. 11036

S.L. 12721

S.L. 13407

P.O.B.  
X=2,430,500.00  
Y=288,730.00

S.L. 16006

S.L. 16007

S.L. 15858



**TRACT 36104 - Plaquemines Parish, Louisiana**

All of the lands now or formerly constituting the beds and bottoms of all water bodies of every nature and description the title of which vests in the State of Louisiana, together with all islands arising therein and other lands formed by accretion or by reliction, where allowed by law, excepting tax adjudicated lands, and not presently under mineral lease on February 11, 2004, situated in Plaquemines Parish, Louisiana, and more particularly described as follows: Beginning at a point having Coordinates of X = 2,464,280.00 and Y = 288,730.00; thence West 18,480.00 feet to a point having Coordinates of X = 2,445,800.00 and Y = 288,730.00; thence North 899.21 feet to a point on the South Line of State Lease No. 12721, as amended having Coordinates of X = 2,445,800.00 and Y = 289,629.21; thence along the boundaries of said State Lease No. 12721 and State Lease No. 11036, as amended the following: North 83 degrees 37 minutes 00 seconds East 1,919.97 feet, South 85 degrees 47 minutes 53 seconds East 834.10 feet, North 1,898.71 feet to a point having Coordinates of X = 2,448,539.93 and Y = 291,680.27, along a curve having a radius of 10,000.00 feet, a center of X = 2,440,348.19 and Y = 285,944.82 to a point having Coordinates of X = 2,447,899.99 and Y = 292,500.00, along a curve having a radius of 4,400.00 feet, a center of X = 2,451,364.80 and Y = 295,212.01 to a point having Coordinates of X = 2,446,975.88 and Y = 294,900.00 and along a curve having a radius of 35,000.00 feet, a center of X = 2,481,644.85 and Y = 299,702.39 to a point having Coordinates of X = 2,446,841.22 and Y = 296,000.00; thence East 17,438.78 feet to a point having Coordinates of X = 2,464,280.00 and Y = 296,000.00; thence South 3,351.65 feet a point on the North Line of State Lease No. 8512, as amended having Coordinates of X = 2,464,280.00 and Y = 292,648.35; thence along the boundary of said State Lease No. 8512 the following: North 65 degrees 05 minutes 28 seconds West 72.42 feet, North 64 degrees 16 minutes 21 seconds West 620.38 feet, North 66 degrees 23 minutes 12 seconds West 995.00 feet, North 69 degrees 33 minutes 25 seconds West 1,421.82, South 28 degrees 30 minutes 38 seconds West 1513.24 feet, South 26 degrees 02 minutes 18 seconds West 644.60 feet, South 62 degrees 58 minutes 06 seconds East 3,132.26 feet, South 68 degrees 58 minutes 05 seconds East 600.57 feet, North 87 degrees 24 minutes 35 seconds East 392.30 feet, and South 85 degrees 16 minutes 00 seconds East 157.39 feet to a point having Coordinates of X = 2,464,280.00 and Y = 290,242.65, being a point on its South Line; thence South 1,512.65 feet to the point of beginning, **LESS AND EXCEPT** all those portions of SL 11036, as amended, and SL 12721, as amended, that may lie within the above described tract, containing approximately **2,003.00 acres**, all as more particularly outlined on a plat on file in the Office of Mineral Resources, Department of Natural Resources. All bearings, distances and coordinates are based on Louisiana Coordinate System of 1927, (North or South Zone), where applicable.

NOTE: The above description of the Tract nominated for lease has been provided and corrected, where required, exclusively by the nomination party. Any mineral lease selected from this Tract and awarded by the Louisiana State Mineral Board shall be without warranty of any kind,

either express, implied, or statutory, including, but not limited to, the implied warranties of merchantability and fitness for a particular purpose. Should the mineral lease awarded by the Louisiana State Mineral Board be subsequently modified, cancelled or abrogated due to the existence of conflicting leases, operating agreements, private claims or other future obligations or conditions which may affect all or any portion of the leased Tract, it shall not relieve the Lessee of the obligation to pay any bonus due thereon to the Louisiana State Mineral Board, nor shall the Louisiana State Mineral Board be obligated to refund any consideration paid by the Lessor prior to such modification, cancellation, or abrogation, including, but not limited to, bonuses, rentals and royalties.

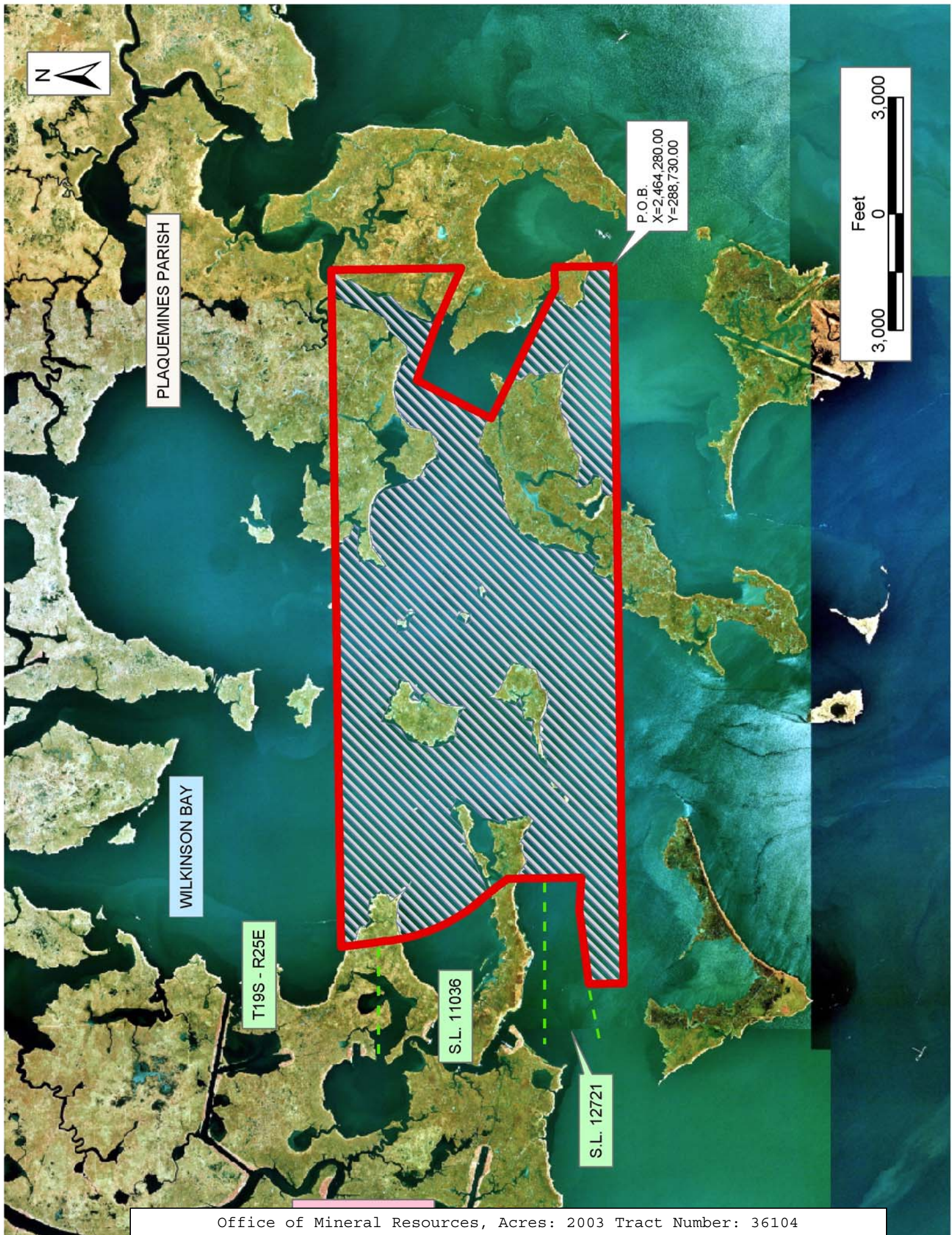
NOTE: The State of Louisiana does hereby reserve, and this lease shall be subject to, the imprescriptible right of surface use in the nature of a servitude in favor of the Department of Natural Resources, including its Offices and Commissions, for the sole purpose of implementing, constructing, servicing and maintaining approved coastal zone management and/or restoration projects. Utilization of any and all rights derived under this lease by the mineral lessee, its agents, successors or assigns, shall not interfere with nor hinder the reasonable surface use by the Department of Natural Resources, its Offices or Commissions, as herein above reserved.

NOTE: The Department of Wildlife and Fisheries has designated certain areas in the coastal waters of the State of Louisiana as Oyster Seed Bed Areas. The exact location of those Seed Bed Areas must be obtained from the Department of Wildlife and Fisheries and any work done under a mineral lease from the State of Louisiana may necessarily be conducted in conformity with the rules and regulations promulgated by the said Department of Wildlife and Fisheries for Oyster Seed Bed Areas.

Applicant: Cummings Energy

Bidder	Cash Payment	Price/Acre	Rental	Oil	Gas	Other





PLAQUEMINES PARISH

WILKINSON BAY

T19S - R25E

S.L. 11036

S.L. 12721

P.O.B.  
X=-2,464,280.00  
Y=-288,730.00





**TRACT 36105 - Terrebonne Parish, Louisiana**

All of the lands now or formerly constituting the beds and bottoms of all water bodies of every nature and description the title of which vests in the State of Louisiana, together with all islands arising therein and other lands formed by accretion or by reliction, where allowed by law, excepting tax adjudicated lands, and not presently under mineral lease on February 11, 2004, situated in Terrebonne Parish, Louisiana, and more particularly described as follows: Beginning at a point having Coordinates of X = 2,103,500.00 and Y = 282,500.00; thence West 10,720.00 feet to a point having Coordinates of X = 2,092,780.00 and Y = 282,500.00; thence North 8,860.00 feet to a point having Coordinates of X = 2,092,780.00 and Y = 291,360.00; thence West 5,780.00 feet to a point having Coordinates of X = 2,087,000.00 and Y = 291,360.00; thence North 5,140.00 feet to a point having Coordinates of X = 2,087,000.00 and Y = 296,500.00; thence East 16,500.00 feet to a point having Coordinates of X = 2,103,500.00 and Y = 296,500.00; thence South 14,000.00 feet to the point of beginning, containing approximately **65 acres**, all as more particularly outlined on a plat on file in the Office of Mineral Resources, Department of Natural Resources. All bearings, distances and coordinates are based on Louisiana Coordinate System of 1927, (North or South Zone), where applicable.

NOTE: The above description of the Tract nominated for lease has been provided and corrected, where required, exclusively by the nomination party. Any mineral lease selected from this Tract and awarded by the Louisiana State Mineral Board shall be without warranty of any kind, either express, implied, or statutory, including, but not limited to, the implied warranties of merchantability and fitness for a particular purpose. Should the mineral lease awarded by the Louisiana State Mineral Board be subsequently modified, cancelled or abrogated due to the existence of conflicting leases, operating agreements, private claims or other future obligations or conditions which may affect all or any portion of the leased Tract, it shall not relieve the Lessee of the obligation to pay any bonus due thereon to the Louisiana State Mineral Board, nor shall the Louisiana State Mineral Board be obligated to refund any consideration paid by the Lessor prior to such modification, cancellation, or abrogation, including, but not limited to, bonuses, rentals and royalties.

NOTE: The State of Louisiana does hereby reserve, and this lease shall be subject to, the imprescriptible right of surface use in the nature of a servitude in favor of the Department of Natural Resources, including its Offices and Commissions, for the sole purpose of implementing, constructing, servicing and maintaining approved coastal zone management and/or restoration projects. Utilization of any and all rights derived under this lease by the mineral lessee, its agents, successors or assigns, shall not interfere with nor hinder the reasonable surface use by the Department of Natural Resources, its Offices or Commissions, as herein above reserved.

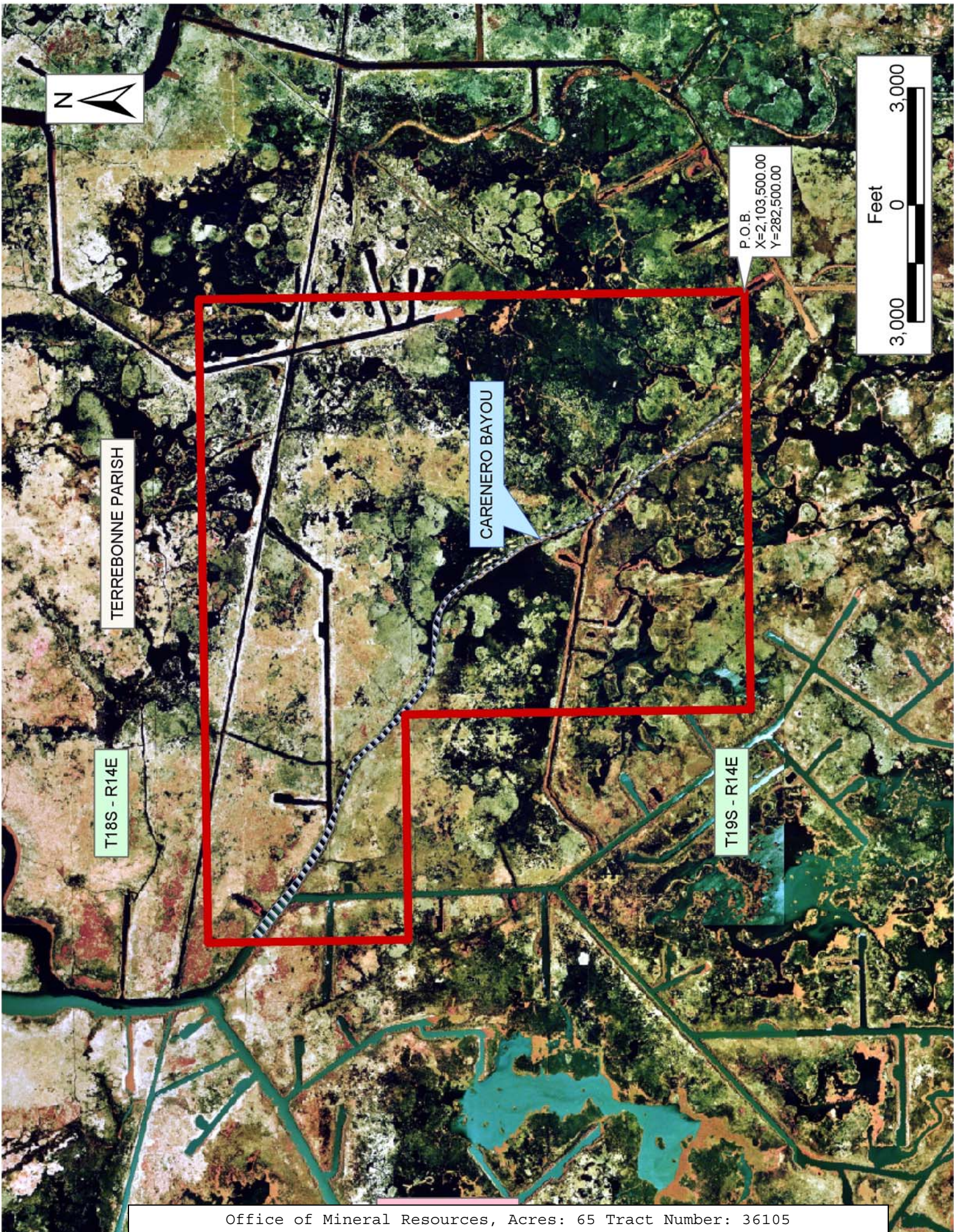


NOTE: The above Tract is located upon a restricted scenic river and all operations in this area must be conducted in strict conformity with the regulations of the Corps of Engineers, U.S. Army.

Applicant: R B Sua Energy Partners

Bidder	Cash Payment	Price/Acre	Rental	Oil	Gas	Other







**TRACT 36106 - Jefferson and Plaquemines Parishes, Louisiana**

All of the lands now or formerly constituting the beds and bottoms of all water bodies of every nature and description the title of which vests in the State of Louisiana, together with all islands arising therein and other lands formed by accretion or by reliction, where allowed by law, excepting tax adjudicated lands, and not presently under mineral lease on February 11, 2004, situated in Jefferson and Plaquemines Parishes, Louisiana, and more particularly described as follows: Beginning at a point having Coordinates of X = 2,430,500.00 and Y = 288,730.00; thence East 18,100.00 feet to a point having Coordinates of X = 2,448,600.00 and Y = 288,730.00; thence South 5,449.91 feet to a point on the North Line of State Lease No. 17375; thence North 75 degrees 38 minutes 35 seconds West 1,238.68 feet to its Northwest corner and the Northeast corner of State Lease No. 17374 having Coordinates of X = 2,447,400.00 and Y = 283,587.24; thence along the boundary of said State Lease No. 17374 the following: North 75 degrees 38 minutes 35 seconds West 6,286.32, West 2,560.00 feet, South 55 degrees 19 minutes 05 seconds West 5,447.97 feet and South 05 degrees 12 minutes 26 seconds West 1,652.82 feet to its Southwest corner having Coordinates of X = 2,434,120.00 and Y = 280,400.00; thence West 3,620.00 feet to a point having Coordinates of X = 2,430,500.00 and Y = 280,400.00; thence North 8,330.00 feet to the point of beginning, containing approximately **1,977.00 acres**, all as more particularly outlined on a plat on file in the Office of Mineral Resources, Department of Natural Resources. All bearings, distances and coordinates are based on Louisiana Coordinate System of 1927, (North or South Zone), where applicable.

NOTE: The above description of the Tract nominated for lease has been provided and corrected, where required, exclusively by the nomination party. Any mineral lease selected from this Tract and awarded by the Louisiana State Mineral Board shall be without warranty of any kind, either express, implied, or statutory, including, but not limited to, the implied warranties of merchantability and fitness for a particular purpose. Should the mineral lease awarded by the Louisiana State Mineral Board be subsequently modified, cancelled or abrogated due to the existence of conflicting leases, operating agreements, private claims or other future obligations or conditions which may affect all or any portion of the leased Tract, it shall not relieve the Lessee of the obligation to pay any bonus due thereon to the Louisiana State Mineral Board, nor shall the Louisiana State Mineral Board be obligated to refund any consideration paid by the Lessor prior to such modification, cancellation, or abrogation, including, but not limited to, bonuses, rentals and royalties.

NOTE: The State of Louisiana does hereby reserve, and this lease shall be subject to, the imprescriptible right of surface use in the nature of a servitude in favor of the Department of Natural Resources, including its Offices and Commissions, for the sole purpose of implementing, constructing, servicing and maintaining approved coastal zone management and/or restoration projects. Utilization of any and all rights derived



under this lease by the mineral lessee, its agents, successors or assigns, shall not interfere with nor hinder the reasonable surface use by the Department of Natural Resources, its Offices or Commissions, as herein above reserved.

NOTE: The Department of Wildlife and Fisheries has designated certain areas in the coastal waters of the State of Louisiana as Oyster Seed Bed Areas. The exact location of those Seed Bed Areas must be obtained from the Department of Wildlife and Fisheries and any work done under a mineral lease from the State of Louisiana may necessarily be conducted in conformity with the rules and regulations promulgated by the said Department of Wildlife and Fisheries for Oyster Seed Bed Areas.

Applicant: Cummings Energy

Bidder	Cash Payment	Price/Acre	Rental	Oil	Gas	Other



PLAQUEMINES PARISH

T19S - R25E

JEFFERSON PARISH

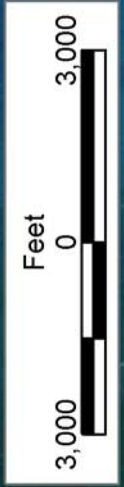
P.O.B.  
X=2,430,500.00  
Y=288,730.00



S.L. 17374

S.L. 17375

BARATARIA BAY





**TRACT 36107 - Plaquemines Parish, Louisiana**

All of the lands now or formerly constituting the beds and bottoms of all water bodies of every nature and description the title of which vests in the State of Louisiana, together with all islands arising therein and other lands formed by accretion or by reliction, where allowed by law, excepting tax adjudicated lands, and not presently under mineral lease on February 11, 2004, situated in Plaquemines Parish, Louisiana, and more particularly described as follows: Beginning at a point having Coordinates of X = 2,464,280.00 and Y = 288,730.00; thence South 1,756.58 feet to a point having Coordinates of X = 2,464,280.00 and Y = 286,973.42; thence West 400.05 feet to the Northeast corner of State Lease No. 15246, as amended having Coordinates of X = 2,463,879.95 and Y = 286,973.42; thence along the boundary of said State Lease No. 15246 the following: South 85 degrees 51 minutes 59 seconds West 111.19 feet, South 84 degrees 19 minutes 37 seconds West 154.48 feet, South 76 degrees 05 minutes 34 seconds West 243.48 feet, South 71 degrees 29 minutes 57 seconds West 247.29 feet, South 70 degrees 20 minutes 49 seconds West 285.74 feet, South 81 degrees 59 minutes 31 seconds East 152.26 feet, South 60 degrees 31 minutes 46 seconds East 146.54 feet, South 50 degrees 29 minutes 03 seconds East 355.72 feet, South 49 degrees 25 minutes 31 seconds East 459.48 feet and North 89 degrees 00 minutes 00 seconds East 108.90 feet to its Southeast corner having Coordinates of X = 2,463,886.03 and Y = 286,100.44; thence South 00 degrees 24 minutes 30 seconds East 64.56 feet to a point on the North Line of State Lease No. 17376; thence along the boundary of said State Lease No. 17376 the following: North 89 degrees 02 minutes 14 seconds West 2,744.87 feet, South 39 degrees 21 minutes 42 seconds 1,784.89 feet and South 61 degrees 13 minutes 59 seconds East 4,871.18 feet to a point on its South Line having Coordinates of X = 2,464,280.00 and Y = 282,357.75; thence South 1,571.75 feet to a point having Coordinates of X = 2,464,280.00 and Y = 280,786.00; thence West 11,210.34 feet to a point on the East Line of State Lease No. 17375 having Coordinates of X = 2,453,069.66 and Y = 280,786.00; thence along the boundary of said State Lease No. 17375 the following: North 35 degrees 31 minutes 47 seconds West 2,029.95 feet and North 75 degrees 38 minutes 35 seconds West 3,396.06 feet to a point on its North Line; thence North 5,449.91 feet to a point having Coordinates of X = 2,448,600.00 and Y = 288,730.00; thence East 15,680.00 feet to the point of beginning, containing approximately **2,086.00 acres**, all as more particularly outlined on a plat on file in the Office of Mineral Resources, Department of Natural Resources. All bearings, distances and coordinates are based on Louisiana Coordinate System of 1927, (North or South Zone), where applicable.

NOTE: The above description of the Tract nominated for lease has been provided and corrected, where required, exclusively by the nomination party. Any mineral lease selected from this Tract and awarded by the Louisiana State Mineral Board shall be without warranty of any kind, either express, implied, or statutory, including, but not limited to, the implied warranties of merchantability and fitness for a particular



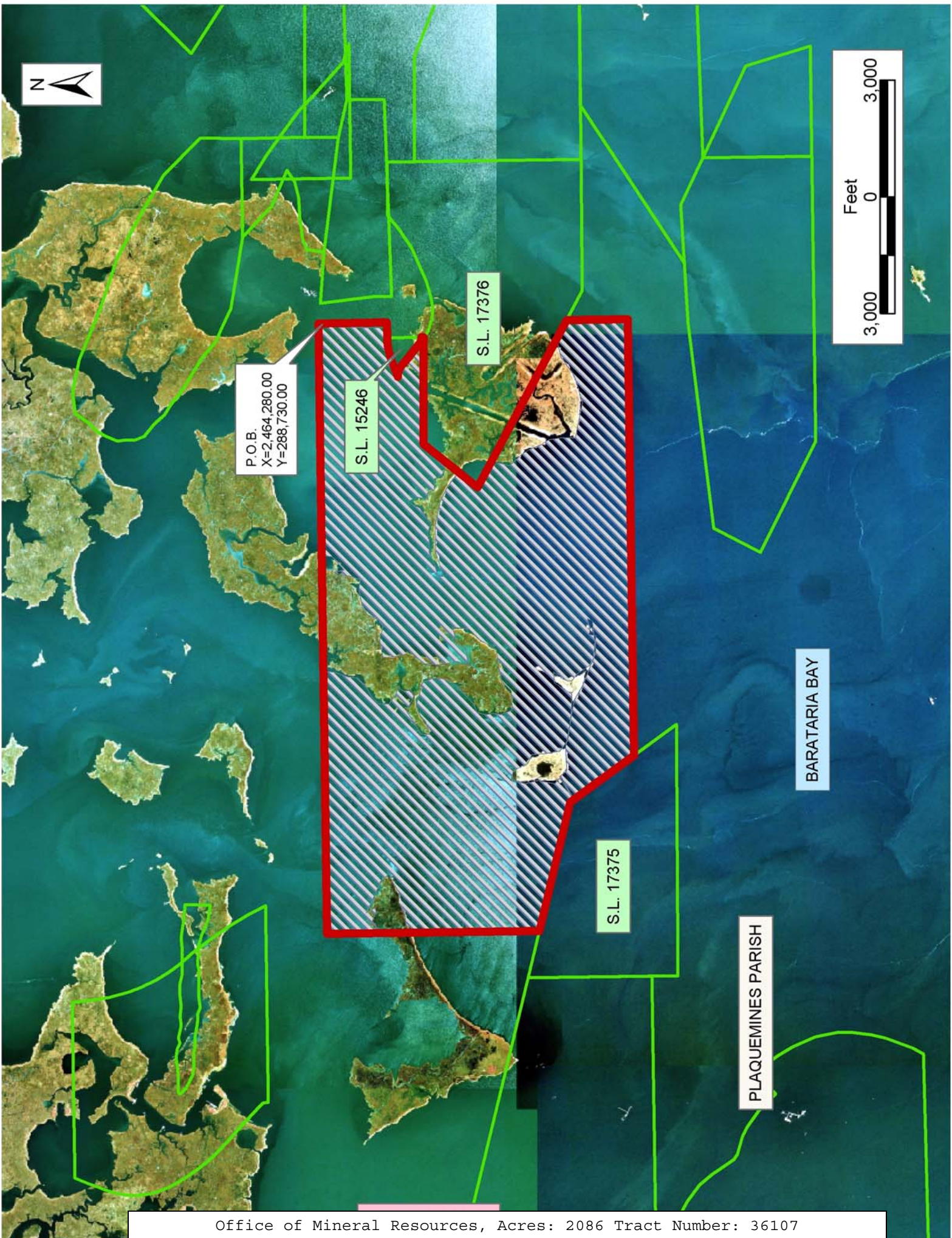
purpose. Should the mineral lease awarded by the Louisiana State Mineral Board be subsequently modified, cancelled or abrogated due to the existence of conflicting leases, operating agreements, private claims or other future obligations or conditions which may affect all or any portion of the leased Tract, it shall not relieve the Lessee of the obligation to pay any bonus due thereon to the Louisiana State Mineral Board, nor shall the Louisiana State Mineral Board be obligated to refund any consideration paid by the Lessor prior to such modification, cancellation, or abrogation, including, but not limited to, bonuses, rentals and royalties.

NOTE: The State of Louisiana does hereby reserve, and this lease shall be subject to, the imprescriptible right of surface use in the nature of a servitude in favor of the Department of Natural Resources, including its Offices and Commissions, for the sole purpose of implementing, constructing, servicing and maintaining approved coastal zone management and/or restoration projects. Utilization of any and all rights derived under this lease by the mineral lessee, its agents, successors or assigns, shall not interfere with nor hinder the reasonable surface use by the Department of Natural Resources, its Offices or Commissions, as herein above reserved.

NOTE: The Department of Wildlife and Fisheries has designated certain areas in the coastal waters of the State of Louisiana as Oyster Seed Bed Areas. The exact location of those Seed Bed Areas must be obtained from the Department of Wildlife and Fisheries and any work done under a mineral lease from the State of Louisiana may necessarily be conducted in conformity with the rules and regulations promulgated by the said Department of Wildlife and Fisheries for Oyster Seed Bed Areas.

Applicant: Cummings Energy

Bidder	Cash Payment	Price/Acre	Rental	Oil	Gas	Other





**TRACT 36108 - Jefferson and Lafourche Parishes, Louisiana**

All of the lands now or formerly constituting the beds and bottoms of all water bodies of every nature and description the title of which vests in the State of Louisiana, together with all islands arising therein and other lands formed by accretion or by reliction, where allowed by law, excepting tax adjudicated lands, and not presently under mineral lease on February 11, 2004, situated in Jefferson and Lafourche Parishes, Louisiana, and more particularly described as follows: Beginning at a point having Coordinates of X = 2,416,744.69 and Y = 281,842.15; thence East 6,264.20 feet to the Northwest corner of State Lease 15822, as amended, having Coordinates of X = 2,423,008.89 and Y = 281,842.15; thence South 3,966.54 feet along the West line of said State Lease 15822 to the Southwest corner of said State Lease 15822, also being a point on the North line of State Lease 16338; thence West 67.88 feet along the North line of said State Lease 16338 to the Northwest corner of State Lease 16338 having Coordinates of X = 2,422,941.00 and Y = 277,875.60; thence along the boundary of said State Lease 16338 the following courses: South 2,912.60 feet; East 1,629.87 feet and North 2,617.15 feet to a point on the East line of said State Lease 16338, also being the Southwest corner of State Lease 15823, as amended, having Coordinates of X = 2,424,570.87 and Y = 277,580.15; thence East 2,700.00 feet along the South line of said State Lease 15823 to the Southeast corner of said State Lease 15823; thence North 295.45 feet along the East line of said State Lease 15823 to the Northeast corner of said State Lease 15823, also being the Southeast corner of said State Lease 15822, having Coordinates of X = 2,427,270.87 and Y = 277,875.60; thence East 3,856.96 feet to a point having Coordinates of X = 2,431,127.83 and Y = 277,875.60; thence South 2,343.29 feet to the Northwest corner of State Lease 15631, as amended, having Coordinates of X = 2,431,127.83 and Y = 275,532.31; thence South 3,727.68 feet along the West line of said State Lease 15631 to the Southwest corner of said State Lease 15631, also being the Northwest corner of State Lease 15744, as amended, having Coordinates of X = 2,431,127.83 and Y = 271,804.63; thence South 3,234.63 feet along the West line of said State Lease 15744 to the Southwest corner of said State Lease 15744 having Coordinates of X = 2,431,127.83 and Y = 268,570.00; thence South 2,343.30 feet to a point having Coordinates of X = 2,431,127.83 and Y = 266,226.70; thence West approximately 4,025 feet to a point on the Eastern line of State Lease 1217, as amended; thence along the East line of said State Lease 1217, the following courses: Northerly approximately 2897 feet, Westerly 2,500.00 feet, Northerly 4,354.00 feet, Westerly 4,861.73 feet; Northerly 2,661.50 feet; Westerly 2,661.50 feet; and Northerly 5,243.68 feet to the most Northern Northeast corner of said State Leases 1217; thence Northerly approximately 716 feet to the point of beginning, **LESS AND EXCEPT** all those portions of State Lease 1217, as amended, and State Lease 356, as amended that may lie within the above described tract, containing approximately **2,245 acres**, all as more particularly outlined on a plat on file in the Office of Mineral Resources, Department of Natural Resources. All bearings, distances and coordinates are based on Louisiana Coordinate System of 1927, (North or South Zone), where applicable.



NOTE: The above description of the Tract nominated for lease has been provided and corrected, where required, exclusively by the nomination party. Any mineral lease selected from this Tract and awarded by the Louisiana State Mineral Board shall be without warranty of any kind, either express, implied, or statutory, including, but not limited to, the implied warranties of merchantability and fitness for a particular purpose. Should the mineral lease awarded by the Louisiana State Mineral Board be subsequently modified, cancelled or abrogated due to the existence of conflicting leases, operating agreements, private claims or other future obligations or conditions which may affect all or any portion of the leased Tract, it shall not relieve the Lessee of the obligation to pay any bonus due thereon to the Louisiana State Mineral Board, nor shall the Louisiana State Mineral Board be obligated to refund any consideration paid by the Lessor prior to such modification, cancellation, or abrogation, including, but not limited to, bonuses, rentals and royalties.

NOTE: The State of Louisiana does hereby reserve, and this lease shall be subject to, the imprescriptible right of surface use in the nature of a servitude in favor of the Department of Natural Resources, including its Offices and Commissions, for the sole purpose of implementing, constructing, servicing and maintaining approved coastal zone management and/or restoration projects. Utilization of any and all rights derived under this lease by the mineral lessee, its agents, successors or assigns, shall not interfere with nor hinder the reasonable surface use by the Department of Natural Resources, its Offices or Commissions, as herein above reserved.

NOTE: The Department of Wildlife and Fisheries has designated certain areas in the coastal waters of the State of Louisiana as Oyster Seed Bed Areas. The exact location of those Seed Bed Areas must be obtained from the Department of Wildlife and Fisheries and any work done under a mineral lease from the State of Louisiana may necessarily be conducted in conformity with the rules and regulations promulgated by the said Department of Wildlife and Fisheries for Oyster Seed Bed Areas.

Applicant: John D. Brouillette

Bidder	Cash Payment	Price/Acre	Rental	Oil	Gas	Other





PLAQUEMINES  
PARISH

BARATARIA BAY WATERWAY

P.O.B.  
X=2,416,744.69  
Y=281,842.15



SL 15631

SL 15744

SL 15823

SL 15822

SL 16338

SL 356

JEFFERSON PARISH

T19S - R24E

SL 1217

SL 356

LAFOURCHE PARISH

SL 1217



**TRACT 36109 - Jefferson and Plaquemines Parishes, Louisiana**

All of the lands now or formerly constituting the beds and bottoms of all water bodies of every nature and description the title of which vests in the State of Louisiana, together with all islands arising therein and other lands formed by accretion or by reliction, where allowed by law, excepting tax adjudicated lands, and not presently under mineral lease on February 11, 2004, situated in Jefferson and Plaquemines Parishes, Louisiana, and more particularly described as follows: Beginning at a point having Coordinates of X = 2,445,800.00 and Y = 280,400.00; thence South 4,272.44 feet to a point on the East Boundary of State Lease 3035, as amended having Coordinates of X = 2,445,800.00 and Y = 276,127.56; thence along the boundary of said State Lease No. 3035 the following: North 11 degrees 01 minutes 46 seconds West 104.38 feet, North 23 degrees 22 minutes 27 seconds West 642.80 feet, North 29 degrees 58 minutes 54 seconds West 450.30 feet, North 36 degrees 28 minutes 09 seconds West 429.00 feet, North 46 degrees 50 minutes 51 seconds West 329.00 feet, South 42 degrees 21 minutes 27 seconds West 690.20 feet, North 44 degrees 39 minutes 25 seconds West 590.40 feet, North 53 degrees 26 minutes 25 seconds West 554.00 feet, North 63 degrees 26 minutes 06 seconds West 246.00 feet, North 73 degrees 04 minutes 21 seconds West 480.80 feet, North 57 degrees 15 minutes 53 seconds West 166.40 feet, North 34 degrees 41 minutes 43 West 158.10 feet, North 33 degrees 05 minutes 30 seconds West 531.20 feet, North 39 degrees 43 minutes 08 seconds West 422.50 feet, North 52 degrees 01 minutes 42 seconds West 520.10 feet, North 61 degrees 23 minutes 22 seconds West 501.20 feet, North 72 degrees 58 minutes 46 seconds West 512.50 feet, North 77 degrees 54 minutes 19 seconds West 429.50 feet, North 81 degrees 50 minutes 30 seconds West 1,162.50 feet to its Northwest corner and South 00 degrees 41 minutes 53 seconds East 2,349.60 feet to a point on its West Line and the Northeast corner of State Lease No. 14374, having Coordinates of X = 2,439,127.83 and Y = 277,875.60; thence along the boundary of said State Lease No. 14374 the following: West 1,002.81 feet and South 00 degrees 38 minutes 43 seconds East 333.69 feet to a point on its West Line and the Northeast corner of State Lease No. 14534 having Coordinates of X = 2,438,128.78 and Y = 277,541.93; thence West 2,996.76 feet and South 2,009.62 feet along the boundary of said State Lease No. 14534 to a point on its West Line and the Northeast corner of State Lease No. 15631, as amended; thence West 4,004.19 feet to its Northwest corner having Coordinates of X = 2,431,127.83 and Y = 275,532.31; thence North 2,343.29 feet to a point having coordinates of X = 2,431,127.83 and Y = 277,875.60; thence West 627.83 feet to a point having coordinates of X = 2, 430,500.00 and Y = 277,875.60; thence North 2,524.40 feet to a point having Coordinates of X = 2,430,500.00 and Y = 280,400.00; thence East 3,620.00 feet to the Southwest corner of State Lease No. 17374 having Coordinates of X = 2,434,120.00 and Y = 280,400.00 feet; thence continue East 11,680.00 feet along the South Line of said State Lease No. 17374 to the point of beginning, containing approximately **980 acres**, all as more particularly outlined on a plat on file in the Office of Mineral Resources, Department of Natural Resources. All bearings, distances and coordinates are based on

Louisiana Coordinate System of 1927, (North or South Zone), where applicable.

NOTE: The above description of the Tract nominated for lease has been provided and corrected, where required, exclusively by the nomination party. Any mineral lease selected from this Tract and awarded by the Louisiana State Mineral Board shall be without warranty of any kind, either express, implied, or statutory, including, but not limited to, the implied warranties of merchantability and fitness for a particular purpose. Should the mineral lease awarded by the Louisiana State Mineral Board be subsequently modified, cancelled or abrogated due to the existence of conflicting leases, operating agreements, private claims or other future obligations or conditions which may affect all or any portion of the leased Tract, it shall not relieve the Lessee of the obligation to pay any bonus due thereon to the Louisiana State Mineral Board, nor shall the Louisiana State Mineral Board be obligated to refund any consideration paid by the Lessor prior to such modification, cancellation, or abrogation, including, but not limited to, bonuses, rentals and royalties.

NOTE: The State of Louisiana does hereby reserve, and this lease shall be subject to, the imprescriptible right of surface use in the nature of a servitude in favor of the Department of Natural Resources, including its Offices and Commissions, for the sole purpose of implementing, constructing, servicing and maintaining approved coastal zone management and/or restoration projects. Utilization of any and all rights derived under this lease by the mineral lessee, its agents, successors or assigns, shall not interfere with nor hinder the reasonable surface use by the Department of Natural Resources, its Offices or Commissions, as herein above reserved.

NOTE: The Department of Wildlife and Fisheries has designated certain areas in the coastal waters of the State of Louisiana as Oyster Seed Bed Areas. The exact location of those Seed Bed Areas must be obtained from the Department of Wildlife and Fisheries and any work done under a mineral lease from the State of Louisiana may necessarily be conducted in conformity with the rules and regulations promulgated by the said Department of Wildlife and Fisheries for Oyster Seed Bed Areas.

Bidder	Cash Payment	Price/Acre	Rental	Oil	Gas	Other



Applicant: Cummings Energy



S.L. 17375

P.O.B.  
X=2,445,800.00  
Y=280,400.00

S.L. 17374

S.L. 14374

S.L. 3035

BARATARIA BAY

S.L. 14534

S.L. 15631

S.L. 15744

PLAQUEMINES PARISH

JEFFERSON PARISH





**TRACT 36110 - Plaquemines Parish, Louisiana**

All of the lands now or formerly constituting the beds and bottoms of all water bodies of every nature and description the title of which vests in the State of Louisiana, together with all islands arising therein and other lands formed by accretion or by reliction, where allowed by law, excepting tax adjudicated lands, and not presently under mineral lease on February 11, 2004, situated in Plaquemines Parish, Louisiana, and more particularly described as follows: Beginning at a point having Coordinates of X = 2,445,800.00 and Y = 280,400.00; thence East 1,600.00 feet to a point on the West Line of State Lease No. 17375 having Coordinates of X = 2,447,400.00 and Y = 280,400.00; thence along the boundary of said State Lease No. 17375 the following: South 670.28 feet, South 89 degrees 34 minutes 36 seconds East 6,458.18 feet and North 35 degrees 31 minutes 47 seconds West 1,356.58 feet to a point on the East Line of said State Lease No. 17375 having Coordinates of X = 2,453,069.66 and Y = 280,786.00; thence East 11,210.34 feet to a point having Coordinates of X = 2,464,280.00 and Y = 280,786.00; thence South 05 degrees 05 minutes 40 seconds West 1,554.14 feet to a point on the North Line of State Lease No. 17377 having Coordinates of X = 2,464,142.00 and Y = 279,238.00; thence South 83 degrees 37 minutes 35 seconds West 5,296.74 feet to its Northwest corner having Coordinates of X = 2,458,878.00 and Y = 278,650.00; thence West 11,378.00 feet to a point having Coordinates of X = 2,447,500.00 and Y = 278,650.00; thence South 12,595.00 feet to a point having Coordinates of X = 2,447,500.00 and Y = 266,055.00; thence West 1,700.00 feet to a point having Coordinates of X = 2,445,800.00 and Y = 266,055.00; thence North 8,686.01 feet to a point on the East Line of State Lease No. 3035, as amended having Coordinates of X = 2,445,800.00 and Y = 274,741.01; thence along the boundary of said State Lease No. 3035 the following : North 14 degrees 25 minutes 15 seconds East 40.25 feet, North 08 degrees 30 minutes 16 seconds East 541.00 feet, North 00 degrees 52 minutes 53 seconds East 325.00 feet and North 11 degrees 01 minutes 46 seconds West 496.72 feet to a point having Coordinates of X = 2,445,800.00 and Y = 276,127.56; thence North 4,272.44 feet to the point of beginning, containing approximately **1,191.71 acres**, all as more particularly outlined on a plat on file in the Office of Mineral Resources, Department of Natural Resources. All bearings, distances and coordinates are based on Louisiana Coordinate System of 1927, (North or South Zone), where applicable.

NOTE: The above description of the Tract nominated for lease has been provided and corrected, where required, exclusively by the nomination party. Any mineral lease selected from this Tract and awarded by the Louisiana State Mineral Board shall be without warranty of any kind, either express, implied, or statutory, including, but not limited to, the implied warranties of merchantability and fitness for a particular purpose. Should the mineral lease awarded by the Louisiana State Mineral Board be subsequently modified, cancelled or abrogated due to the existence of conflicting leases, operating agreements, private claims or other future obligations or conditions which may affect all or any portion

of the leased Tract, it shall not relieve the Lessee of the obligation to pay any bonus due thereon to the Louisiana State Mineral Board, nor shall the Louisiana State Mineral Board be obligated to refund any consideration paid by the Lessor prior to such modification, cancellation, or abrogation, including, but not limited to, bonuses, rentals and royalties.

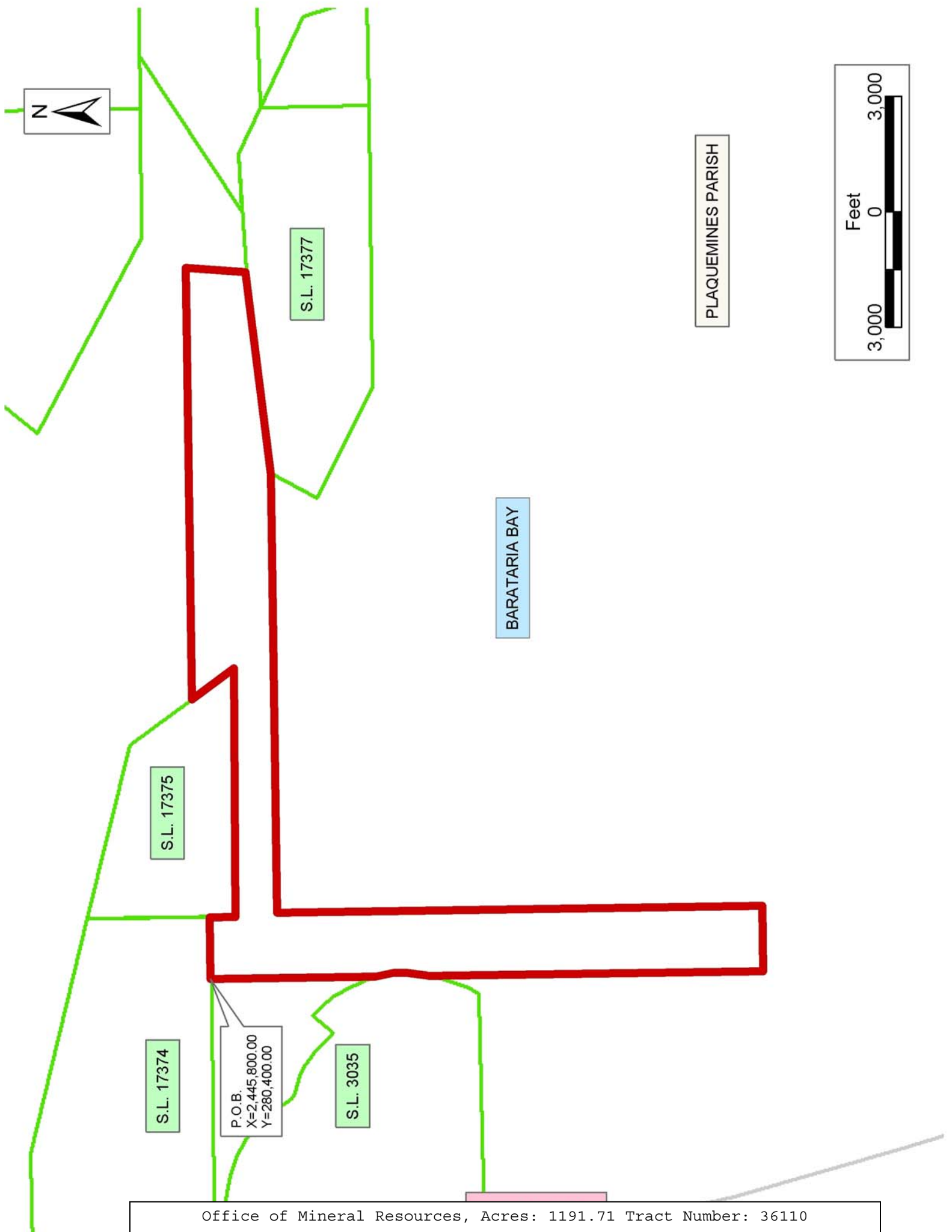
NOTE: The State of Louisiana does hereby reserve, and this lease shall be subject to, the imprescriptible right of surface use in the nature of a servitude in favor of the Department of Natural Resources, including its Offices and Commissions, for the sole purpose of implementing, constructing, servicing and maintaining approved coastal zone management and/or restoration projects. Utilization of any and all rights derived under this lease by the mineral lessee, its agents, successors or assigns, shall not interfere with nor hinder the reasonable surface use by the Department of Natural Resources, its Offices or Commissions, as herein above reserved.

NOTE: The Department of Wildlife and Fisheries has designated certain areas in the coastal waters of the State of Louisiana as Oyster Seed Bed Areas. The exact location of those Seed Bed Areas must be obtained from the Department of Wildlife and Fisheries and any work done under a mineral lease from the State of Louisiana may necessarily be conducted in conformity with the rules and regulations promulgated by the said Department of Wildlife and Fisheries for Oyster Seed Bed Areas.

Applicant: Cummings Energy

Bidder	Cash Payment	Price/Acre	Rental	Oil	Gas	Other





**TRACT 36111 - Jefferson and Plaquemines Parishes, Louisiana**

All of the lands now or formerly constituting the beds and bottoms of all water bodies of every nature and description the title of which vests in the State of Louisiana, together with all islands arising therein and other lands formed by accretion or by reliction, where allowed by law, excepting tax adjudicated lands, and not presently under mineral lease on February 11, 2004, situated in Jefferson and Plaquemines Parishes, Louisiana, and more particularly described as follows: Beginning at a point having Coordinates of X = 2,431,127.83 and Y = 266,055.00; thence North 2,515.00 feet to the Southwest corner of State Lease No. 15744, as amended, having Coordinates of X = 2,431,127.83 and Y = 268,570.00; thence along the boundary of said State Lease No. 15744 the following: East 4,004.19 feet and North 3,234.63 feet to its Northeast corner and the Southeast corner of State Lease No. 15631 having Coordinates of X = 2,435,132.02 and Y = 271,804.63; thence continue North 3,034.77 feet along the East Line of said State Lease No. 15631 to a point on its East Line and the Southwest corner of State Lease No. 14534 having Coordinates of X = 2,435,132.02 and Y = 274,839.40; thence East 3,027.18 feet along the South Line of said State Lease No. 14534 to its Southeast corner and a point on the West Line of State Lease No. 14374 having Coordinates of X = 2,438,159.20 and Y = 274,839.40; thence along the boundary of said State Lease No. 14374 the following: South 00 degrees 38 minutes 42 seconds East 926.14 feet and South 87 degrees 51 minutes 10 seconds East 1,007.65 feet to its Southeast corner and a point on the West Line of State Lease No. 3035, as amended having Coordinates of X = 2,439,176.57 and Y = 273,875.57; thence along the boundary of said State Lease No. 3035 the following: South 00 degrees 41 minutes 53 seconds East 489.89 feet, North 89 degrees 18 minutes 14 seconds East 6,120.02 feet, North 30 degrees 28 minutes 03 seconds East 301.60 feet, North 20 degrees 28 minutes 03 seconds East 757.80 feet and North 14 degrees 25 minutes 15 seconds East 321.15 feet to a point on its East Line having Coordinates of X = 2,445,800.00 and Y = 274,741.01; thence South 8,686.01 feet to a point having Coordinates of X = 2,445,800.00 and Y = 266,055.00; thence West 14,672.17 feet to the point of beginning, containing approximately **2,151.89 acres**, all as more particularly outlined on a plat on file in the Office of Mineral Resources, Department of Natural Resources. All bearings, distances and coordinates are based on Louisiana Coordinate System of 1927, (North or South Zone), where applicable.

NOTE: The above description of the Tract nominated for lease has been provided and corrected, where required, exclusively by the nomination party. Any mineral lease selected from this Tract and awarded by the Louisiana State Mineral Board shall be without warranty of any kind, either express, implied, or statutory, including, but not limited to, the implied warranties of merchantability and fitness for a particular purpose. Should the mineral lease awarded by the Louisiana State Mineral Board be subsequently modified, cancelled or abrogated due to the existence of conflicting leases, operating agreements, private claims or other future obligations or conditions which may affect all or any portion

of the leased Tract, it shall not relieve the Lessee of the obligation to pay any bonus due thereon to the Louisiana State Mineral Board, nor shall the Louisiana State Mineral Board be obligated to refund any consideration paid by the Lessor prior to such modification, cancellation, or abrogation, including, but not limited to, bonuses, rentals and royalties.

NOTE: The State of Louisiana does hereby reserve, and this lease shall be subject to, the imprescriptible right of surface use in the nature of a servitude in favor of the Department of Natural Resources, including its Offices and Commissions, for the sole purpose of implementing, constructing, servicing and maintaining approved coastal zone management and/or restoration projects. Utilization of any and all rights derived under this lease by the mineral lessee, its agents, successors or assigns, shall not interfere with nor hinder the reasonable surface use by the Department of Natural Resources, its Offices or Commissions, as herein above reserved.

NOTE: The Department of Wildlife and Fisheries has designated certain areas in the coastal waters of the State of Louisiana as Oyster Seed Bed Areas. The exact location of those Seed Bed Areas must be obtained from the Department of Wildlife and Fisheries and any work done under a mineral lease from the State of Louisiana may necessarily be conducted in conformity with the rules and regulations promulgated by the said Department of Wildlife and Fisheries for Oyster Seed Bed Areas.

Applicant: Cummings Energy

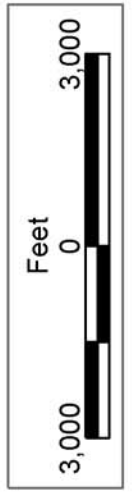
Bidder	Cash Payment	Price/Acre	Rental	Oil	Gas	Other



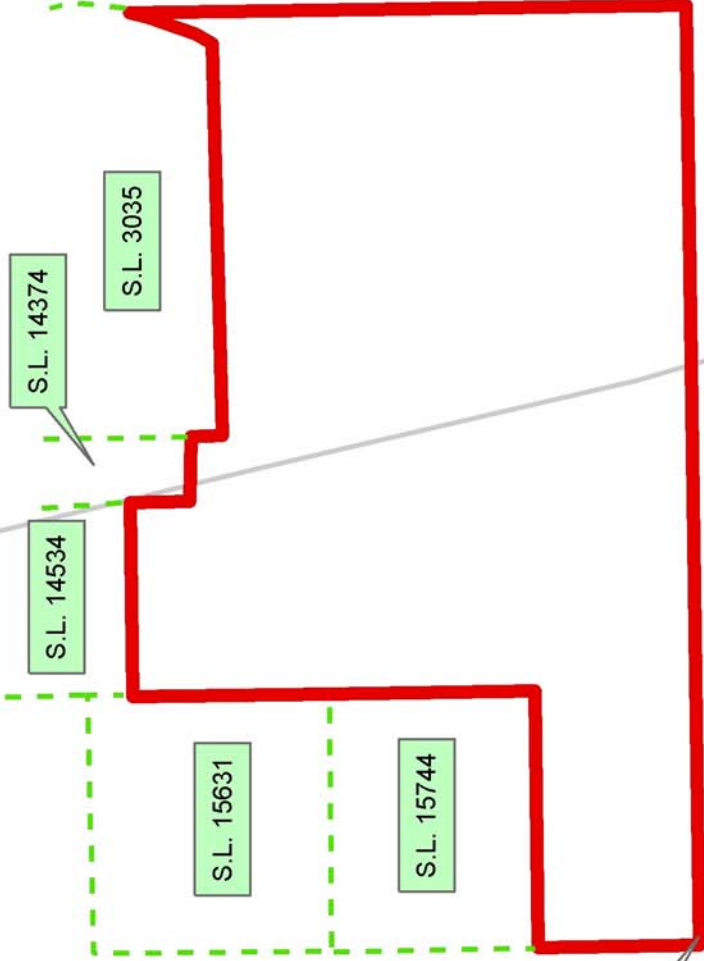


BARATARIA BAY

PLAQUEMINES PARISH



T19S - R25E



P.O.B.  
X=2,431,127.83  
Y=266,055.00

JEFFERSON PARISH

**TRACT 36112 - Plaquemines Parish, Louisiana**

All of the lands now or formerly constituting the beds and bottoms of all water bodies of every nature and description the title of which vests in the State of Louisiana, together with all islands arising therein and other lands formed by accretion or by reliction, where allowed by law, excepting tax adjudicated lands, and not presently under mineral lease on February 11, 2004, situated in Plaquemines Parish, Louisiana, and more particularly described as follows: Beginning at a point having Coordinates of X = 2,456,800.00 and Y = 271,200.00; thence West 3,500.00 feet to a point having Coordinates of X = 2,453,300.00 and Y = 271,200.00; thence North 1,800.00 feet to a point having Coordinates of X = 2,453,300.00 and Y = 273,000.00; thence East 3,500.00 feet to a point having Coordinates of X = 2,456,800.00 and Y = 273,000.00; thence South 1,800.00 feet to the point of beginning, containing approximately **144.63 acres**, all as more particularly outlined on a plat on file in the Office of Mineral Resources, Department of Natural Resources. All bearings, distances and coordinates are based on Louisiana Coordinate System of 1927, (North or South Zone), where applicable.

NOTE: The above description of the Tract nominated for lease has been provided and corrected, where required, exclusively by the nomination party. Any mineral lease selected from this Tract and awarded by the Louisiana State Mineral Board shall be without warranty of any kind, either express, implied, or statutory, including, but not limited to, the implied warranties of merchantability and fitness for a particular purpose. Should the mineral lease awarded by the Louisiana State Mineral Board be subsequently modified, cancelled or abrogated due to the existence of conflicting leases, operating agreements, private claims or other future obligations or conditions which may affect all or any portion of the leased Tract, it shall not relieve the Lessee of the obligation to pay any bonus due thereon to the Louisiana State Mineral Board, nor shall the Louisiana State Mineral Board be obligated to refund any consideration paid by the Lessor prior to such modification, cancellation, or abrogation, including, but not limited to, bonuses, rentals and royalties.

NOTE: The State of Louisiana does hereby reserve, and this lease shall be subject to, the imprescriptible right of surface use in the nature of a servitude in favor of the Department of Natural Resources, including its Offices and Commissions, for the sole purpose of implementing, constructing, servicing and maintaining approved coastal zone management and/or restoration projects. Utilization of any and all rights derived under this lease by the mineral lessee, its agents, successors or assigns, shall not interfere with nor hinder the reasonable surface use by the Department of Natural Resources, its Offices or Commissions, as herein above reserved.

NOTE: The Department of Wildlife and Fisheries has designated certain areas in the coastal waters of the State of Louisiana as Oyster Seed Bed Areas. The exact location of those Seed Bed Areas must be obtained from

the Department of Wildlife and Fisheries and any work done under a mineral lease from the State of Louisiana may necessarily be conducted in conformity with the rules and regulations promulgated by the said Department of Wildlife and Fisheries for Oyster Seed Bed Areas.

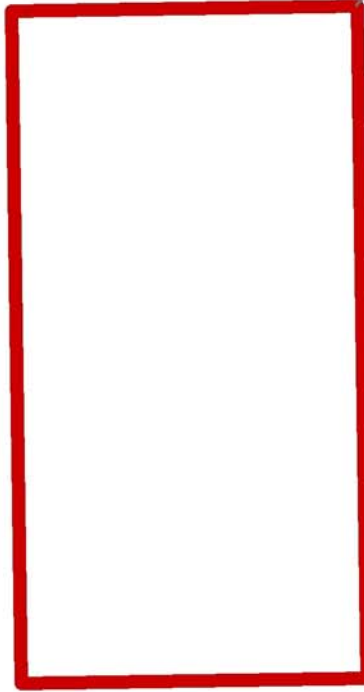
Applicant: Cedyco Corporation

Bidder	Cash Payment	Price/Acre	Rental	Oil	Gas	Other





PLAQUEMINES PARISH



P.O.B.  
X=2,456,800.00  
Y=271,200.00

BARATARIA BAY

