

TRACT 36093 - Portion of Block 23, Breton Sound Area, Plaquemines Parish, Louisiana

All of the lands now or formerly constituting the beds and bottoms of all water bodies of every nature and description the title of which vests in the State of Louisiana, together with all islands arising therein and other lands formed by accretion or by reliction, where allowed by law, excepting tax adjudicated lands, and not presently under mineral lease on February 11, 2004, situated in Plaquemines Parish, Louisiana, and more particularly described as follows: Beginning at a point on the West line of Block 23, Breton Sound Area having Coordinates of X = 2,723,850.00 and Y = 344,455.00; thence East 5,056.57 feet to a point on the Southern boundary of State Lease No. 16272, as amended, having Coordinates of X = 2,728,906.57 and Y = 344,455.00; thence South 46 degrees 03 minutes 10 seconds East 1,385.12 feet along the Southern boundary of said State Lease No. 16272 to a common Southern corner between said State Lease No. 16272 and State Lease No. 17070, as amended, having Coordinates of X = 2,729,903.83 and Y = 343,493.73; thence along the Southern boundary of said State Lease No. 17070 the following courses: South 46 degrees 03 minutes 00 seconds East 2,109.03 feet to a point having Coordinates of X = 2,731,422.22 and Y = 342,030.00; East 76.17 feet to a point having Coordinates of X = 2,731,498.39 and Y = 342,030.00; North 78 degrees 00 minutes 14 seconds East 2,645.36 feet to its most Eastern Southeast corner, said point also being a point on the Coastline derived from the June 16, 1975 Decree in the United States vs. Louisiana No. 9 Original having Coordinates of X = 2,734,085.98 and Y = 342,579.82; thence South 37 degrees 15 minutes 00 seconds West 6,909.30 feet along said Coastline to a point on the South line of said Block 23 having Coordinates of X = 2,729,903.83 and Y = 337,080.00; thence West 6,053.83 feet to the Southwest corner of Block 23 having Coordinates of X = 2,723,850.00 and Y = 337,080.00; thence North 7,375.00 feet along the West line of said Block 23 to the point of beginning, containing approximately **1,267.02 acres**, all as more particularly outlined on a plat on file in the Office of Mineral Resources, Department of Natural Resources. All bearings, distances and coordinates are based on Louisiana Coordinate System of 1927, (North or South Zone), where applicable.

NOTE: The above description of the Tract nominated for lease has been provided and corrected, where required, exclusively by the nomination party. Any mineral lease selected from this Tract and awarded by the Louisiana State Mineral Board shall be without warranty of any kind, either express, implied, or statutory, including, but not limited to, the implied warranties of merchantability and fitness for a particular purpose. Should the mineral lease awarded by the Louisiana State Mineral Board be subsequently modified, cancelled or abrogated due to the existence of conflicting leases, operating agreements, private claims or other future obligations or conditions which may affect all or any portion of the leased Tract, it shall not relieve the Lessee of the obligation to pay any bonus due thereon to the Louisiana State Mineral Board, nor shall the Louisiana State Mineral Board be obligated to refund any consideration

paid by the Lessor prior to such modification, cancellation, or abrogation, including, but not limited to, bonuses, rentals and royalties.

NOTE: The State of Louisiana does hereby reserve, and this lease shall be subject to, the imprescriptible right of surface use in the nature of a servitude in favor of the Department of Natural Resources, including its Offices and Commissions, for the sole purpose of implementing, constructing, servicing and maintaining approved coastal zone management and/or restoration projects. Utilization of any and all rights derived under this lease by the mineral lessee, its agents, successors or assigns, shall not interfere with nor hinder the reasonable surface use by the Department of Natural Resources, its Offices or Commissions, as herein above reserved.

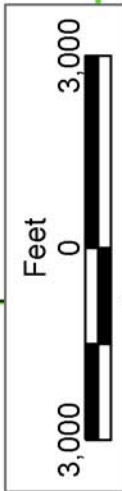
Applicant: Stephen M. Jenkins, Inc.

| Bidder | Cash Payment | Price/Acre | Rental | Oil | Gas | Other |
|--------|--------------|------------|--------|-----|-----|-------|
| | | | | | | |
| | | | | | | |
| | | | | | | |
| | | | | | | |



BLOCK BS0024

BLOCK BS0025



PLAQUEMINES PARISH

S.L. 16258

S.L. 16273

BLOCK BS0023

BLOCK BS0026

S.L. 17070

S.L. 16272

BRETON SOUND AREA

Coastline

P.O.B.
X=2,723,850.00
Y=344,455.00

BLOCK BS0022

S.L. 2326

BLOCK BS0027

TRACT 36094 - Portion of Block 27, Breton Sound Area, Plaquemines Parish, Louisiana

All of the lands now or formerly constituting the beds and bottoms of all water bodies of every nature and description the title of which vests in the State of Louisiana, together with all islands arising therein and other lands formed by accretion or by reliction, where allowed by law, excepting tax adjudicated lands, and not presently under mineral lease on February 11, 2004, situated in Plaquemines Parish, Louisiana, and more particularly described as follows: Beginning at a point being the Northeast corner of Block 27, Breton Sound Area having Coordinates of X = 2,723,850.00 and Y = 337,080.00; thence South 6,340.17 feet along the East line of Block 27 to a point on the Coastline derived from the June 16, 1975 Decree in the United States vs. Louisiana No. 9 Original having Coordinates of X = 2,723,850.00 and Y = 330,739.83; thence South 44 degrees 16 minutes 54 seconds West 1,445.46 feet along said Coastline to a point having Coordinates of X = 2,722,840.80 and Y = 329,705.00; thence West 5,709.55 feet to a point on the Southeastern boundary of State Lease No. 15958 as amended, having Coordinates of X = 2,717,131.25 and Y = 329,705.00; thence along the Southern and Eastern boundaries of said State Lease No. 15958 the following courses: North 51 degrees 20 minutes 25 seconds East 3,673.79 feet to its Southeast corner having Coordinates of X = 2,720,000.00 and Y = 332,000.00; North 1,030.00 feet to its Northeast corner being a point on an Eastern boundary of State Lease No. 4574 as amended, having Coordinates of X = 2,720,000.00 and Y = 333,030.00; thence along the boundaries of State Lease No. 4574 as amended the following courses: East 200.00 feet to a corner having Coordinates of X = 2,720,200.00 and Y = 333,030.00; North 28 degrees 30 minutes 41 seconds East 4,608.96 feet to its most Northerly Northeast corner having Coordinates of X = 2,722,400.00 and Y = 337,080.00; thence East 1,450.00 feet to the point of beginning containing approximately **594.55 acres**, all as more particularly outlined on a plat on file in the Office of Mineral Resources, Department of Natural Resources. All bearings, distances and coordinates are based on Louisiana Coordinate System of 1927, (North or South Zone), where applicable.

NOTE: The above description of the Tract nominated for lease has been provided and corrected, where required, exclusively by the nomination party. Any mineral lease selected from this Tract and awarded by the Louisiana State Mineral Board shall be without warranty of any kind, either express, implied, or statutory, including, but not limited to, the implied warranties of merchantability and fitness for a particular purpose. Should the mineral lease awarded by the Louisiana State Mineral Board be subsequently modified, cancelled or abrogated due to the existence of conflicting leases, operating agreements, private claims or other future obligations or conditions which may affect all or any portion of the leased Tract, it shall not relieve the Lessee of the obligation to pay any bonus due thereon to the Louisiana State Mineral Board, nor shall the Louisiana State Mineral Board be obligated to refund any consideration

paid by the Lessor prior to such modification, cancellation, or abrogation, including, but not limited to, bonuses, rentals and royalties.

NOTE: The State of Louisiana does hereby reserve, and this lease shall be subject to, the imprescriptible right of surface use in the nature of a servitude in favor of the Department of Natural Resources, including its Offices and Commissions, for the sole purpose of implementing, constructing, servicing and maintaining approved coastal zone management and/or restoration projects. Utilization of any and all rights derived under this lease by the mineral lessee, its agents, successors or assigns, shall not interfere with nor hinder the reasonable surface use by the Department of Natural Resources, its Offices or Commissions, as herein above reserved.

Applicant: Stephen M. Jenkins, Inc.

| Bidder | Cash Payment | Price/Acre | Rental | Oil | Gas | Other |
|--------|--------------|------------|--------|-----|-----|-------|
| | | | | | | |
| | | | | | | |
| | | | | | | |
| | | | | | | |

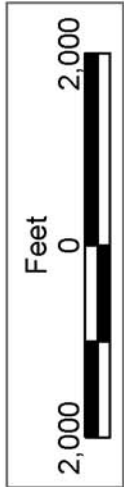


BLOCK BS0023

PLAQUEMINES PARISH

P.O.B.
X=2,723,850.00
Y=337,080.00

BLOCK BS0026



Coastline

BLOCK BS0022

S.L. 2326

BRETON SOUND AREA

S.L. 15958

BLOCK BS0027

S.L. 4574

TRACT 36095 - Portion of Block 26, Breton Sound Area, Plaquemines Parish, Louisiana

All of the lands now or formerly constituting the beds and bottoms of all water bodies of every nature and description the title of which vests in the State of Louisiana, together with all islands arising therein and other lands formed by accretion or by reliction, where allowed by law, excepting tax adjudicated lands, and not presently under mineral lease on February 11, 2004, situated in Plaquemines Parish, Louisiana, and more particularly described as follows: Beginning at a point being the Northwest corner of Block 26, Breton Sound Area having Coordinates of X = 2,723,850.00 and Y = 337,080.00; thence East 6,053.83 feet to a point on the Coastline derived from the June 16, 1975 Decree in the United States vs. Louisiana No. 9 Original having Coordinates of X = 2,729,903.83 and Y = 337,080.00; thence along said Coastline the following courses: South 37 degrees 15 minutes 00 seconds West 3,718.58 feet to a point having Coordinates of X = 2,727,653.00 and Y = 334,120.00; South 38 degrees 13 minutes 28 seconds West 1,294.56 feet to a point having Coordinates of X = 2,726,852.00 and Y = 333,103.00; South 52 degrees 09 minutes 29 seconds West 3,643.12 feet to a point having Coordinates of X = 2,723,975.00 and Y = 330,868.00; South 44 degrees 16 minutes 54 seconds West 179.04 feet to a point on the West line of said Block 26 having Coordinates of X = 2,723,850.00 and Y = 330,739.83; thence North 6,340.17 feet to the point of beginning, containing approximately **494.74 acres**, all as more particularly outlined on a plat on file in the Office of Mineral Resources, Department of Natural Resources. All bearings, distances and coordinates are based on Louisiana Coordinate System of 1927, (North or South Zone), where applicable.

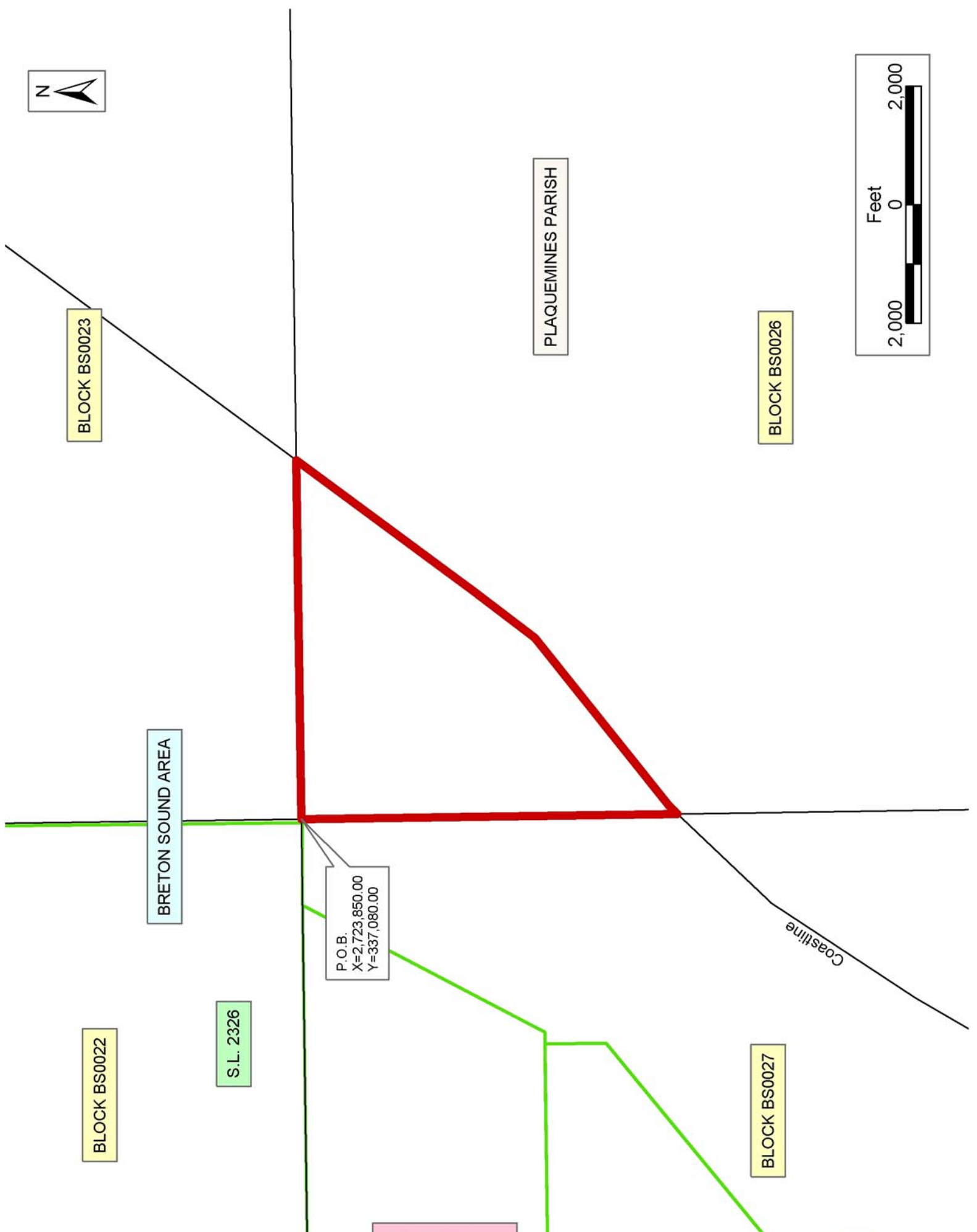
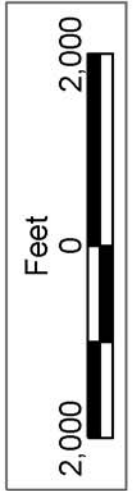
NOTE: The above description of the Tract nominated for lease has been provided and corrected, where required, exclusively by the nomination party. Any mineral lease selected from this Tract and awarded by the Louisiana State Mineral Board shall be without warranty of any kind, either express, implied, or statutory, including, but not limited to, the implied warranties of merchantability and fitness for a particular purpose. Should the mineral lease awarded by the Louisiana State Mineral Board be subsequently modified, cancelled or abrogated due to the existence of conflicting leases, operating agreements, private claims or other future obligations or conditions which may affect all or any portion of the leased Tract, it shall not relieve the Lessee of the obligation to pay any bonus due thereon to the Louisiana State Mineral Board, nor shall the Louisiana State Mineral Board be obligated to refund any consideration paid by the Lessor prior to such modification, cancellation, or abrogation, including, but not limited to, bonuses, rentals and royalties.

NOTE: The State of Louisiana does hereby reserve, and this lease shall be subject to, the imprescriptible right of surface use in the nature of a servitude in favor of the Department of Natural Resources, including its Offices and Commissions, for the sole purpose of implementing, constructing, servicing and maintaining approved coastal zone management

and/or restoration projects. Utilization of any and all rights derived under this lease by the mineral lessee, its agents, successors or assigns, shall not interfere with nor hinder the reasonable surface use by the Department of Natural Resources, its Offices or Commissions, as herein above reserved.

Applicant: Stephen M. Jenkins, Inc.

| Bidder | Cash Payment | Price/Acre | Rental | Oil | Gas | Other |
|--------|--------------|------------|--------|-----|-----|-------|
| | | | | | | |
| | | | | | | |
| | | | | | | |
| | | | | | | |



BLOCK BS0023

PLAQUEMINES PARISH

BLOCK BS0026

BRETON SOUND AREA

BLOCK BS0022

S.L. 2326

P.O.B.
X=2,723,850.00
Y=337,080.00

BLOCK BS0027

Coastline

TRACT 36096 - Portion of Block 27, Breton Sound Area, Plaquemines Parish, Louisiana

All of the lands now or formerly constituting the beds and bottoms of all water bodies of every nature and description the title of which vests in the State of Louisiana, together with all islands arising therein and other lands formed by accretion or by reliction, where allowed by law, excepting tax adjudicated lands, and not presently under mineral lease on February 11, 2004, situated in Plaquemines Parish, Louisiana, and more particularly described as follows: Beginning at a point being the Southwest corner of Block 27, Breton Sound Area having Coordinates of X = 2,709,100.00 and Y = 322,330.00; thence North 5,200.00 feet along the West line of Block 27 to a point being the Southwest corner of State Lease No. 4574 as amended, having Coordinates of X = 2,709,100.00 and Y = 327,530.00; thence along the boundaries of said State Lease No. 4574 East 7,500.00 feet to a corner having Coordinates of X = 2,716,600.00 and Y = 327,530.00; North 1,750.00 feet to a point being the Southwest corner of State Lease No. 15958 as amended, having Coordinates of X = 2,716,600.00 and Y = 329,280.00; North 51 degrees 20 minutes 25 seconds East 680.33 feet with the Southern boundary of State Lease No. 15958 to a point having Coordinates of X = 2,717,131.25 and Y = 329,705.00; thence East 5,709.55 feet to a point being on the Coastline derived from the June 16, 1975 Decree in the United States vs. Louisiana No. 9 Original having Coordinates of X = 2,722,840.80 and Y = 329,705.00; thence along said Coastline the following courses: South 44 degrees 16 minutes 54 seconds West 744.50 feet to a point having Coordinates of X = 2,722,321.00 and Y = 329,172.00; South 34 degrees 10 minutes 44 seconds West 2,892.59 feet to a point having Coordinates of X = 2,720,696.00 and Y = 326,779.00; South 31 degrees 07 minutes 15 seconds West 5,196.95 feet to a point on the South line of said Block 27 having Coordinates of X = 2,718,009.98 and Y = 322,330.00; thence West 8,909.98 feet to the point of beginning containing approximately **1,516.74 acres**, all as more particularly outlined on a plat on file in the Office of Mineral Resources, Department of Natural Resources. All bearings, distances and coordinates are based on Louisiana Coordinate System of 1927, (North or South Zone), where applicable.

NOTE: The above description of the Tract nominated for lease has been provided and corrected, where required, exclusively by the nomination party. Any mineral lease selected from this Tract and awarded by the Louisiana State Mineral Board shall be without warranty of any kind, either express, implied, or statutory, including, but not limited to, the implied warranties of merchantability and fitness for a particular purpose. Should the mineral lease awarded by the Louisiana State Mineral Board be subsequently modified, cancelled or abrogated due to the existence of conflicting leases, operating agreements, private claims or other future obligations or conditions which may affect all or any portion of the leased Tract, it shall not relieve the Lessee of the obligation to pay any bonus due thereon to the Louisiana State Mineral Board, nor shall the Louisiana State Mineral Board be obligated to refund any consideration

paid by the Lessor prior to such modification, cancellation, or abrogation, including, but not limited to, bonuses, rentals and royalties.

NOTE: The State of Louisiana does hereby reserve, and this lease shall be subject to, the imprescriptible right of surface use in the nature of a servitude in favor of the Department of Natural Resources, including its Offices and Commissions, for the sole purpose of implementing, constructing, servicing and maintaining approved coastal zone management and/or restoration projects. Utilization of any and all rights derived under this lease by the mineral lessee, its agents, successors or assigns, shall not interfere with nor hinder the reasonable surface use by the Department of Natural Resources, its Offices or Commissions, as herein above reserved.

Applicant: Stephen M. Jenkins, Inc.

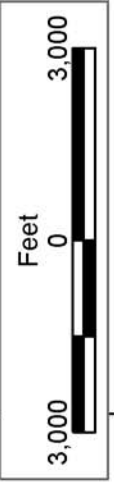
| Bidder | Cash Payment | Price/Acre | Rental | Oil | Gas | Other |
|--------|--------------|------------|--------|-----|-----|-------|
| | | | | | | |
| | | | | | | |
| | | | | | | |
| | | | | | | |



BLOCK BS0026

BLOCK BS0039

PLAQUEMINES PARISH



S.L. 15958

Coastline

S.L. 4574

BLOCK BS0027

BLOCK BS0038

BRETON SOUND AREA

P.O.B.
X=2,709,100.00
Y=322,330.00

S.L. 1999

BLOCK BS0028

BLOCK BS0037

S.L. 4409

TRACT 36097 - Portion of Block 38, Breton Sound Area, Plaquemines Parish, Louisiana

All of the lands now or formerly constituting the beds and bottoms of all water bodies of every nature and description the title of which vests in the State of Louisiana, together with all islands arising therein and other lands formed by accretion or by reliction, where allowed by law, excepting tax adjudicated lands, and not presently under mineral lease on February 11, 2004, situated in Plaquemines Parish, Louisiana, and more particularly described as follows: Beginning at a point being the Northwest corner of Block 38, Breton Sound Area having Coordinates of X = 2,709,100.00 and Y = 322,330.00; thence East 8,909.98 feet to a point on the Coastline derived from the June 16, 1975 Decree in the United States vs. Louisiana No. 9 Original having Coordinates of X = 2,718,009.98 and Y = 322,330.00; thence along said Coastline the following courses: South 31 degrees 07 minutes 15 seconds West 1,930.90 feet to a point having Coordinates of X = 2,717,012.00 and Y = 320,677.00; South 37 degrees 50 minutes 38 seconds West 2,894.82 feet to a point having Coordinates of X = 2,715,236.00 and Y = 318,391.00; South 42 degrees 24 minutes 57 seconds West 893.98 feet to a point having Coordinates of X = 2,714,633.00 and Y = 317,731.00; South 54 degrees 36 minutes 27 seconds West 1,605.73 feet to a point having Coordinates of X = 2,713,324.00 and Y = 316,801.00; South 65 degrees 54 minutes 27 seconds West 1,700.10 feet to a point having Coordinates of X = 2,711,772.00 and Y = 316,107.00; South 85 degrees 24 minutes 00 seconds West 1,396.50 feet to a point having Coordinates of X = 2,710,380.00 and Y = 315,995.00; South 71 degrees 03 minutes 12 seconds West 1,353.32 feet to a point on the West line of said Block 38, having Coordinates of X = 2,709,100.00 and Y = 315,555.59; thence North 6,774.41 feet to the point of beginning, containing approximately **946.82 acres**, all as more particularly outlined on a plat on file in the Office of Mineral Resources, Department of Natural Resources. All bearings, distances and coordinates are based on Louisiana Coordinate System of 1927, (North or South Zone), where applicable.

NOTE: The above description of the Tract nominated for lease has been provided and corrected, where required, exclusively by the nomination party. Any mineral lease selected from this Tract and awarded by the Louisiana State Mineral Board shall be without warranty of any kind, either express, implied, or statutory, including, but not limited to, the implied warranties of merchantability and fitness for a particular purpose. Should the mineral lease awarded by the Louisiana State Mineral Board be subsequently modified, cancelled or abrogated due to the existence of conflicting leases, operating agreements, private claims or other future obligations or conditions which may affect all or any portion of the leased Tract, it shall not relieve the Lessee of the obligation to pay any bonus due thereon to the Louisiana State Mineral Board, nor shall the Louisiana State Mineral Board be obligated to refund any consideration paid by the Lessor prior to such modification, cancellation, or abrogation, including, but not limited to, bonuses, rentals and royalties.

NOTE: The State of Louisiana does hereby reserve, and this lease shall be subject to, the imprescriptible right of surface use in the nature of a servitude in favor of the Department of Natural Resources, including its Offices and Commissions, for the sole purpose of implementing, constructing, servicing and maintaining approved coastal zone management and/or restoration projects. Utilization of any and all rights derived under this lease by the mineral lessee, its agents, successors or assigns, shall not interfere with nor hinder the reasonable surface use by the Department of Natural Resources, its Offices or Commissions, as herein above reserved.

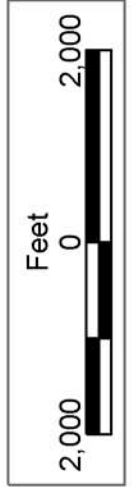
Applicant: Stephen M. Jenkins, Inc.

| Bidder | Cash Payment | Price/Acre | Rental | Oil | Gas | Other |
|--------|--------------|------------|--------|-----|-----|-------|
| | | | | | | |
| | | | | | | |
| | | | | | | |
| | | | | | | |



BLOCK BS0027

BLOCK BS0038



BRETON SOUND AREA

PLAQUEMINES PARISH

BLOCK BS0028

BLOCK BS0037

P.O.B.
X=2,709,100.00
Y=322,330.00

Coastline

TRACT 36098 - Terrebonne Parish, Louisiana

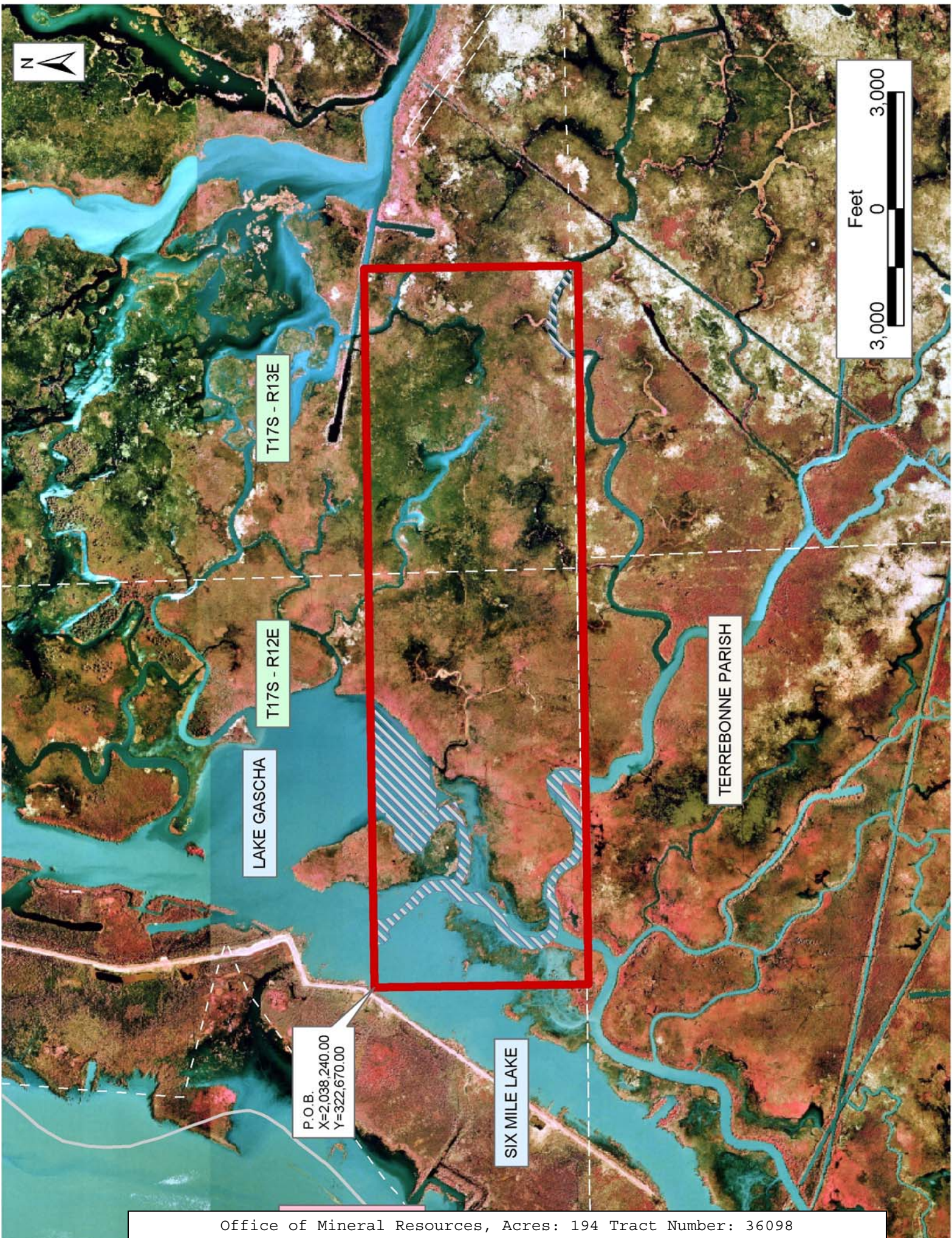
All of the lands now or formerly constituting the beds and bottoms of all water bodies of every nature and description the title of which vests in the State of Louisiana, together with all islands arising therein and other lands formed by accretion or by reliction, where allowed by law, excepting tax adjudicated lands, and not presently under mineral lease on February 11, 2004, situated in Terrebonne Parish, Louisiana, and more particularly described as follows: Beginning at a point having Coordinates of X = 2,038,240.00 and Y = 322,670.00; thence East 18,480.00 feet to a point having Coordinates of X = 2,056,720.00 and Y = 322,670.00; thence South 5,500.00 feet to a point having Coordinates of X = 2,056,720.00 and Y = 317,170.00; thence West 18,480.00 feet to a point having Coordinates of X = 2,038,240.00 and Y = 317,170.00; thence North 5,500.00 feet to the point of beginning, containing approximately **194 acres**, all as more particularly outlined on a plat on file in the Office of Mineral Resources, Department of Natural Resources. All bearings, distances and coordinates are based on Louisiana Coordinate System of 1927, (North or South Zone), where applicable.

NOTE: The above description of the Tract nominated for lease has been provided and corrected, where required, exclusively by the nomination party. Any mineral lease selected from this Tract and awarded by the Louisiana State Mineral Board shall be without warranty of any kind, either express, implied, or statutory, including, but not limited to, the implied warranties of merchantability and fitness for a particular purpose. Should the mineral lease awarded by the Louisiana State Mineral Board be subsequently modified, cancelled or abrogated due to the existence of conflicting leases, operating agreements, private claims or other future obligations or conditions which may affect all or any portion of the leased Tract, it shall not relieve the Lessee of the obligation to pay any bonus due thereon to the Louisiana State Mineral Board, nor shall the Louisiana State Mineral Board be obligated to refund any consideration paid by the Lessor prior to such modification, cancellation, or abrogation, including, but not limited to, bonuses, rentals and royalties.

NOTE: The State of Louisiana does hereby reserve, and this lease shall be subject to, the imprescriptible right of surface use in the nature of a servitude in favor of the Department of Natural Resources, including its Offices and Commissions, for the sole purpose of implementing, constructing, servicing and maintaining approved coastal zone management and/or restoration projects. Utilization of any and all rights derived under this lease by the mineral lessee, its agents, successors or assigns, shall not interfere with nor hinder the reasonable surface use by the Department of Natural Resources, its Offices or Commissions, as herein above reserved.

Applicant: Suncoast Land Services, Inc.

| Bidder | Cash Payment | Price/Acre | Rental | Oil | Gas | Other |
|--------|--------------|------------|--------|-----|-----|-------|
| | | | | | | |
| | | | | | | |
| | | | | | | |
| | | | | | | |



TRACT 36099 - Terrebonne Parish, Louisiana

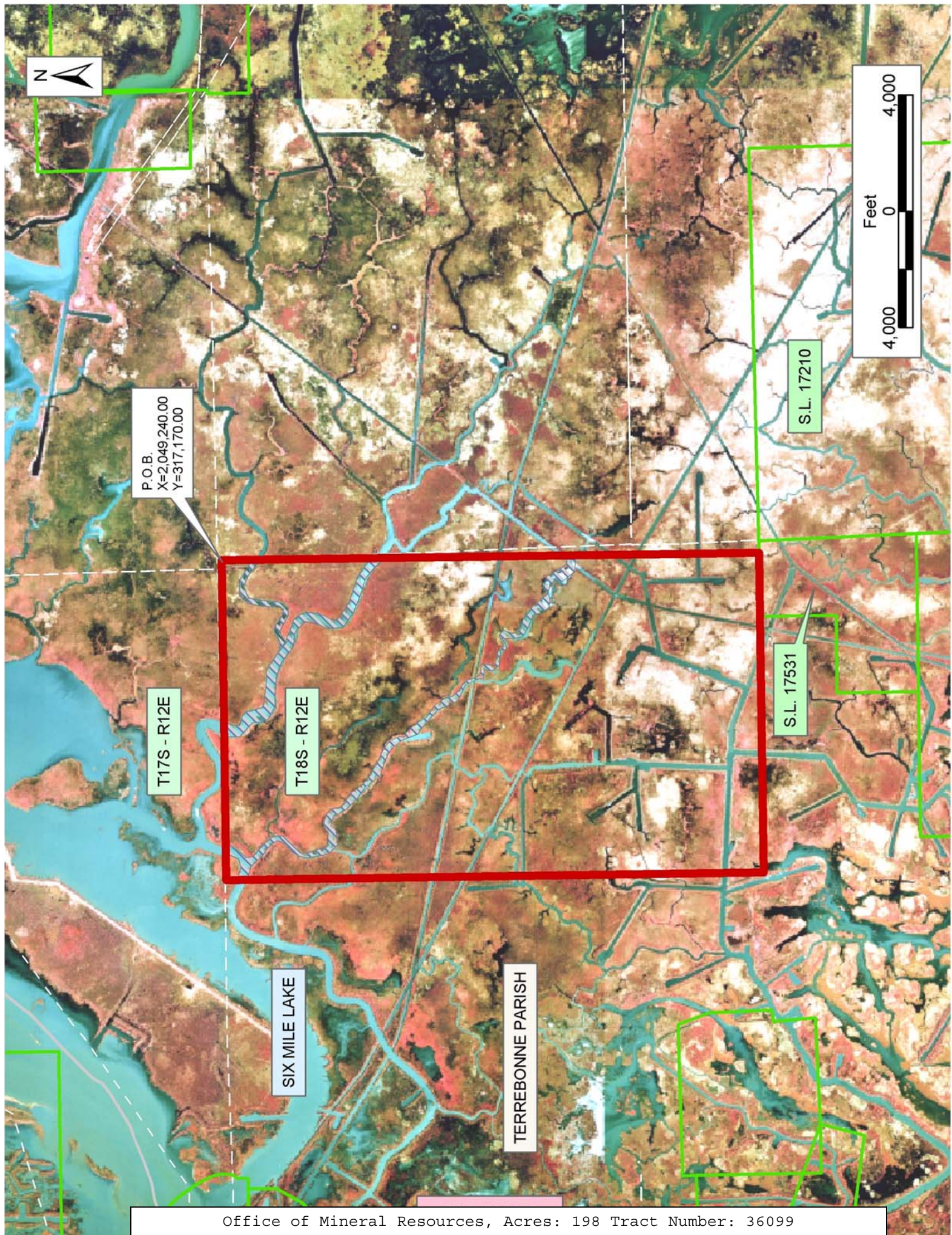
All of the lands now or formerly constituting the beds and bottoms of all water bodies of every nature and description the title of which vests in the State of Louisiana, together with all islands arising therein and other lands formed by accretion or by reliction, where allowed by law, excepting tax adjudicated lands, and not presently under mineral lease on February 11, 2004, situated in Terrebonne Parish, Louisiana, and more particularly described as follows: Beginning at a point having Coordinates of X = 2,049,240.00 and Y = 317,170.00; thence South 18,480.00 feet to a point on the North line of State Lease No. 17531 having Coordinates of X = 2,049,240.00 and Y = 298,690.00; thence West 2,190.00 feet along the North line of said State Lease No. 17531 to its Northwest corner having Coordinates of X = 2,047,050.00 and Y = 298,690.00; thence West 8,810.00 feet to a point having Coordinates of X = 2,038,240.00 and Y = 298,690.00; thence North 18,480.00 feet to a point having Coordinates of X = 2,038,240.00 and Y = 317,170.00; thence East 11,000.00 feet to the point of beginning, containing approximately **198 acres**, all as more particularly outlined on a plat on file in the Office of Mineral Resources, Department of Natural Resources. All bearings, distances and coordinates are based on Louisiana Coordinate System of 1927, (North or South Zone), where applicable.

NOTE: The above description of the Tract nominated for lease has been provided and corrected, where required, exclusively by the nomination party. Any mineral lease selected from this Tract and awarded by the Louisiana State Mineral Board shall be without warranty of any kind, either express, implied, or statutory, including, but not limited to, the implied warranties of merchantability and fitness for a particular purpose. Should the mineral lease awarded by the Louisiana State Mineral Board be subsequently modified, cancelled or abrogated due to the existence of conflicting leases, operating agreements, private claims or other future obligations or conditions which may affect all or any portion of the leased Tract, it shall not relieve the Lessee of the obligation to pay any bonus due thereon to the Louisiana State Mineral Board, nor shall the Louisiana State Mineral Board be obligated to refund any consideration paid by the Lessor prior to such modification, cancellation, or abrogation, including, but not limited to, bonuses, rentals and royalties.

NOTE: The State of Louisiana does hereby reserve, and this lease shall be subject to, the imprescriptible right of surface use in the nature of a servitude in favor of the Department of Natural Resources, including its Offices and Commissions, for the sole purpose of implementing, constructing, servicing and maintaining approved coastal zone management and/or restoration projects. Utilization of any and all rights derived under this lease by the mineral lessee, its agents, successors or assigns, shall not interfere with nor hinder the reasonable surface use by the Department of Natural Resources, its Offices or Commissions, as herein above reserved.

Applicant: Suncoast Land Services, Inc.

| Bidder | Cash Payment | Price/Acre | Rental | Oil | Gas | Other |
|--------|--------------|------------|--------|-----|-----|-------|
| | | | | | | |
| | | | | | | |
| | | | | | | |
| | | | | | | |



P.O.B.
X=2,049,240.00
Y=317,170.00

T17S - R12E

T18S - R12E

S.L. 17210

S.L. 17531

SIX MILE LAKE

TERREBONNE PARISH



TRACT 36100 - Terrebonne Parish, Louisiana

All of the lands now or formerly constituting the beds and bottoms of all water bodies of every nature and description the title of which vests in the State of Louisiana, together with all islands arising therein and other lands formed by accretion or by reliction, where allowed by law, excepting tax adjudicated lands, and not presently under mineral lease on February 11, 2004, situated in Terrebonne Parish, Louisiana, and more particularly described as follows: Beginning at a point having Coordinates of X = 2,049,240.00 and Y = 317,170.00; thence East 11,000.00 feet to a point having Coordinates of X = 2,060,240.00 and Y = 317,170.00; thence South 18,353.24 feet to a point on the North line of State Lease No. 17210 having Coordinates of X = 2,060,240.00 and Y = 298,816.76; thence South 89 degrees 18 minutes 50 seconds West 10,585.76 feet along the North line of said State Lease No. 17210 to its Northwest corner, also being the Northeast corner of State Lease No. 17531 having Coordinates of X = 2,049,655.00 and Y = 298,690.00; thence West 415.00 feet along the North line of said State Lease No. 17531 to a point having Coordinates of X = 2,049,240.00 and Y = 298,690.00; thence North 18,480.00 feet to the point of beginning, containing approximately **118 acres**, all as more particularly outlined on a plat on file in the Office of Mineral Resources, Department of Natural Resources. All bearings, distances and coordinates are based on Louisiana Coordinate System of 1927, (North or South Zone), where applicable.

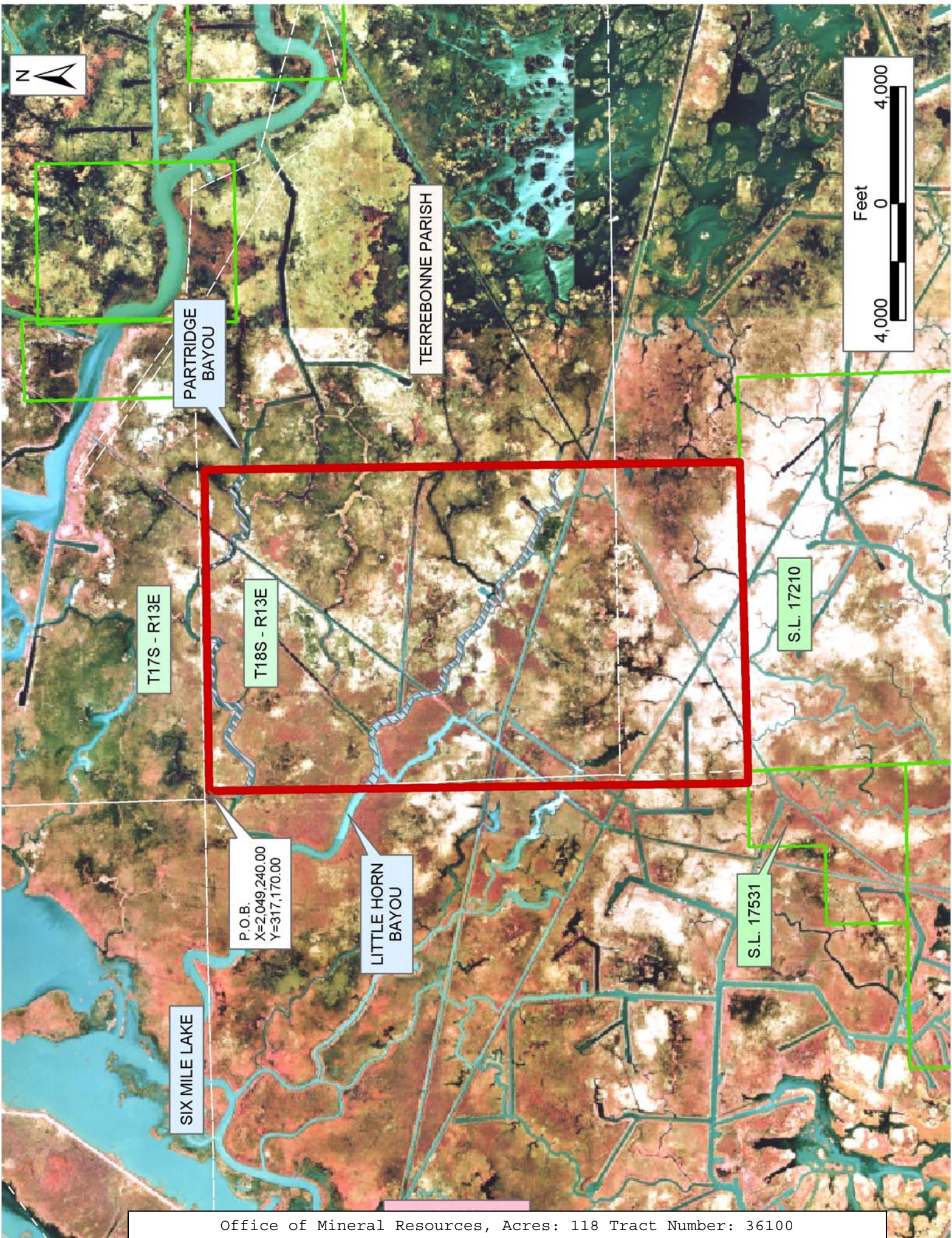
NOTE: The above description of the Tract nominated for lease has been provided and corrected, where required, exclusively by the nomination party. Any mineral lease selected from this Tract and awarded by the Louisiana State Mineral Board shall be without warranty of any kind, either express, implied, or statutory, including, but not limited to, the implied warranties of merchantability and fitness for a particular purpose. Should the mineral lease awarded by the Louisiana State Mineral Board be subsequently modified, cancelled or abrogated due to the existence of conflicting leases, operating agreements, private claims or other future obligations or conditions which may affect all or any portion of the leased Tract, it shall not relieve the Lessee of the obligation to pay any bonus due thereon to the Louisiana State Mineral Board, nor shall the Louisiana State Mineral Board be obligated to refund any consideration paid by the Lessor prior to such modification, cancellation, or abrogation, including, but not limited to, bonuses, rentals and royalties.

NOTE: The State of Louisiana does hereby reserve, and this lease shall be subject to, the imprescriptible right of surface use in the nature of a servitude in favor of the Department of Natural Resources, including its Offices and Commissions, for the sole purpose of implementing, constructing, servicing and maintaining approved coastal zone management and/or restoration projects. Utilization of any and all rights derived under this lease by the mineral lessee, its agents, successors or assigns, shall not interfere with nor hinder the reasonable surface use by the

Department of Natural Resources, its Offices or Commissions, as herein above reserved.

Applicant: Suncoast Land Services, Inc.

| Bidder | Cash Payment | Price/Acre | Rental | Oil | Gas | Other |
|--------|--------------|------------|--------|-----|-----|-------|
| | | | | | | |
| | | | | | | |
| | | | | | | |
| | | | | | | |



PARTRIDGE BAYOU

TERREBONNE PARISH

T17S - R13E

T18S - R13E

S.L. 17210

S.L. 17531

P.O.B.
X=2,049,240.00
Y=317,170.00

LITTLE HORN BAYOU

SIX MILE LAKE

TRACT 36101 - Iberia and St. Mary Parishes, Louisiana

All of the lands now or formerly constituting the beds and bottoms of all water bodies of every nature and description the title of which vests in the State of Louisiana, together with all islands arising therein and other lands formed by accretion or by reliction, where allowed by law, excepting tax adjudicated lands, and not presently under mineral lease on February 11, 2004, situated in Iberia and St. Mary Parishes, Louisiana, and more particularly described as follows: Beginning at a point on the Western boundary of the Atchafalaya Delta Wildlife Management Area, having Coordinates of X = 1,930,619.00 and Y = 306,000.00; thence South approximately 8,403 feet along the Western boundary of said Atchafalaya Delta Wildlife Management Area to a point on the Northern boundary of State Lease No. 340, as amended; thence Westerly approximately 12,919 feet along the Northern boundary of said State Lease No. 340, to the intersection of a North South line having a Coordinate of X = 1,917,700.00; thence North approximately 8,373 feet to a point having Coordinates of X = 1,917,700.00 and Y = 306,000.00; thence East 12,919.00 feet to the point of beginning, **LESS AND EXCEPT** that portion if any, of State Lease No. 340, as amended, that may lie within the above described tract, containing approximately **2,488 acres**, all as more particularly outlined on a plat on file in the Office of Mineral Resources, Department of Natural Resources. All bearings, distances and coordinates are based on Louisiana Coordinate System of 1927, (North or South Zone), where applicable.

NOTE: The above description of the Tract nominated for lease has been provided and corrected, where required, exclusively by the nomination party. Any mineral lease selected from this Tract and awarded by the Louisiana State Mineral Board shall be without warranty of any kind, either express, implied, or statutory, including, but not limited to, the implied warranties of merchantability and fitness for a particular purpose. Should the mineral lease awarded by the Louisiana State Mineral Board be subsequently modified, cancelled or abrogated due to the existence of conflicting leases, operating agreements, private claims or other future obligations or conditions which may affect all or any portion of the leased Tract, it shall not relieve the Lessee of the obligation to pay any bonus due thereon to the Louisiana State Mineral Board, nor shall the Louisiana State Mineral Board be obligated to refund any consideration paid by the Lessor prior to such modification, cancellation, or abrogation, including, but not limited to, bonuses, rentals and royalties.

NOTE: The above described tract may be in the vicinity of existing shell reefs where drilling and dredging operations must be conducted in strict conformity with the regulations adopted by the Louisiana Department of Wildlife and Fisheries and/or the U.S. Corps of Engineers, U.S. Army.

NOTE: The State of Louisiana does hereby reserve, and this lease shall be subject to, the imprescriptible right of surface use in the nature of a servitude in favor of the Department of Natural Resources, including its

Offices and Commissions, for the sole purpose of implementing, constructing, servicing and maintaining approved coastal zone management and/or restoration projects. Utilization of any and all rights derived under this lease by the mineral lessee, its agents, successors or assigns, shall not interfere with nor hinder the reasonable surface use by the Department of Natural Resources, its Offices or Commissions, as herein above reserved.

NOTE: The Department of Wildlife and Fisheries has designated certain areas in the coastal waters of the State of Louisiana as Oyster Seed Bed Areas. The exact location of those Seed Bed Areas must be obtained from the Department of Wildlife and Fisheries and any work done under a mineral lease from the State of Louisiana may necessarily be conducted in conformity with the rules and regulations promulgated by the said Department of Wildlife and Fisheries for Oyster Seed Bed Areas.

Applicant: Buckdeaux Partners

| Bidder | Cash Payment | Price/Acre | Rental | Oil | Gas | Other |
|--------|--------------|------------|--------|-----|-----|-------|
| | | | | | | |
| | | | | | | |
| | | | | | | |
| | | | | | | |



P.O.B.
X=1,930,619.00
Y=306,000.00

ST MARY PARISH

IBERIA PARISH

BLOCK EI0400

EUGENE ISLAND AREA, REVISED

BLOCK EI0399

SL 340



TRACT 36102 - Terrebonne Parish, Louisiana

All of the lands now or formerly constituting the beds and bottoms of all water bodies of every nature and description the title of which vests in the State of Louisiana, together with all islands arising therein and other lands formed by accretion or by reliction, where allowed by law, excepting tax adjudicated lands, and not presently under mineral lease on February 11, 2004, situated in Terrebonne Parish, Louisiana, and more particularly described as follows: Beginning at a point having Coordinates of X = 2,103,500.00 and Y = 282,500.00; thence North 18,000.00 feet to a point having Coordinates of X = 2,103,500.00 and Y = 300,500.00; thence East 16,500.00 feet to a point having Coordinates of X = 2,120,000.00 and Y = 300,500.00; thence South 18,000.00 feet to a point having Coordinates of X = 2,120,000.00 and Y = 282,500.00; thence West 16,500.00 feet to the point of beginning, containing approximately **315 acres**, all as more particularly outlined on a plat on file in the Office of Mineral Resources, Department of Natural Resources. All bearings, distances and coordinates are based on Louisiana Coordinate System of 1927, (North or South Zone), where applicable.

NOTE: The above description of the Tract nominated for lease has been provided and corrected, where required, exclusively by the nomination party. Any mineral lease selected from this Tract and awarded by the Louisiana State Mineral Board shall be without warranty of any kind, either express, implied, or statutory, including, but not limited to, the implied warranties of merchantability and fitness for a particular purpose. Should the mineral lease awarded by the Louisiana State Mineral Board be subsequently modified, cancelled or abrogated due to the existence of conflicting leases, operating agreements, private claims or other future obligations or conditions which may affect all or any portion of the leased Tract, it shall not relieve the Lessee of the obligation to pay any bonus due thereon to the Louisiana State Mineral Board, nor shall the Louisiana State Mineral Board be obligated to refund any consideration paid by the Lessor prior to such modification, cancellation, or abrogation, including, but not limited to, bonuses, rentals and royalties.

NOTE: The State of Louisiana does hereby reserve, and this lease shall be subject to, the imprescriptible right of surface use in the nature of a servitude in favor of the Department of Natural Resources, including its Offices and Commissions, for the sole purpose of implementing, constructing, servicing and maintaining approved coastal zone management and/or restoration projects. Utilization of any and all rights derived under this lease by the mineral lessee, its agents, successors or assigns, shall not interfere with nor hinder the reasonable surface use by the Department of Natural Resources, its Offices or Commissions, as herein above reserved.

Applicant: R B Sua Energy Partners

| Bidder | Cash Payment | Price/Acre | Rental | Oil | Gas | Other |
|--------|--------------|------------|--------|-----|-----|-------|
| | | | | | | |
| | | | | | | |
| | | | | | | |
| | | | | | | |

