

TRACT 36086 - Portion of Block 73, Chandeleur Sound Area, St. Bernard Parish, Louisiana

All of the lands now or formerly constituting the beds and bottoms of all water bodies of every nature and description the title of which vests in the State of Louisiana, together with all islands arising therein and other lands formed by accretion or by reliction, where allowed by law, excepting tax adjudicated lands, and not presently under mineral lease on February 11, 2004, situated in St. Bernard Parish, Louisiana, and more particularly described as follows: Beginning at a point within Block 73, Chandeleur Sound Area, said point located on the boundary of State Lease No. 15959, as amended having Coordinates of X = 2,587,735.03 and Y = 386,030.00; thence along the boundary of said State Lease No. 15959 the following courses: South 75 degrees 30 minutes 36 seconds West 209.58 feet, South 70 degrees 54 minutes 39 seconds West 599.32 feet, South 63 degrees 37 minutes 44 seconds West 405.67 feet, South 59 degrees 21 minutes 35 seconds West 1,000.36 feet, South 63 degrees 34 minutes 54 seconds West 598.91 feet, South 65 degrees 35 minutes 56 seconds West 1,004.35, South 68 degrees 49 minutes 42 seconds West 990.83 feet, South 74 degrees 53 minutes 16 seconds West 604.96, South 81 degrees 43 minutes 56 seconds West 605.36 feet and South 81 degrees 46 minutes 14 seconds West 249.76 feet to the Northeast Corner of State Lease No. 17109, as amended, having Coordinates of X = 2,581,936.36 and Y = 383,771.78; thence South 81 degrees 46 minutes 12 seconds West 748.94 and South 76 degrees 24 minutes 57 seconds East 489.45 feet along the said boundaries of said State Lease No. 17109 to a point, said point also being a point on the boundary of said State Lease No. 15959, thence along the boundary of said State Lease No. 15959 the following courses; South 76 degrees 24 minutes 57 seconds East 501.55 feet, South 73 degrees 26 minutes 52 seconds East 299.06 feet, South 61 degrees 47 minutes 44 seconds East 108.65 feet, South 37 degrees 16 minutes 32 seconds East 105.11, South 19 degrees 12 minutes 46 seconds East 116.02 feet, South 08 degrees 17 minutes 28 seconds East 100.14, South 08 degrees 34 minutes 50 seconds West 212.80, South 15 degrees 31 minutes 20 seconds West 1,012.40 feet and South 11 degrees 08 minutes 02 seconds West 496.42 feet to a point on the South boundary of said Block 73 having Coordinates of X = 2,582,258.57 and Y = 381,330.00; thence West 5,908.57 feet along the said South boundary of said Block 73 to its Southwest corner having Coordinates of X = 2,576,350.00 and Y = 381,330.00; thence North 4,700.00 feet along the West boundary of said Block 73 to a point having Coordinates of X = 2,576,350.00 and Y = 386,030.00; thence East 11,385.03 feet to the point of beginning, containing approximately **796.01 acres**, all as more particularly outlined on a plat on file in the Office of Mineral Resources, Department of Natural Resources. All bearings, distances and coordinates are based on Louisiana Coordinate System of 1927, (North or South Zone), where applicable.

NOTE: The above description of the Tract nominated for lease has been provided and corrected, where required, exclusively by the nomination party. Any mineral lease selected from this Tract and awarded by the

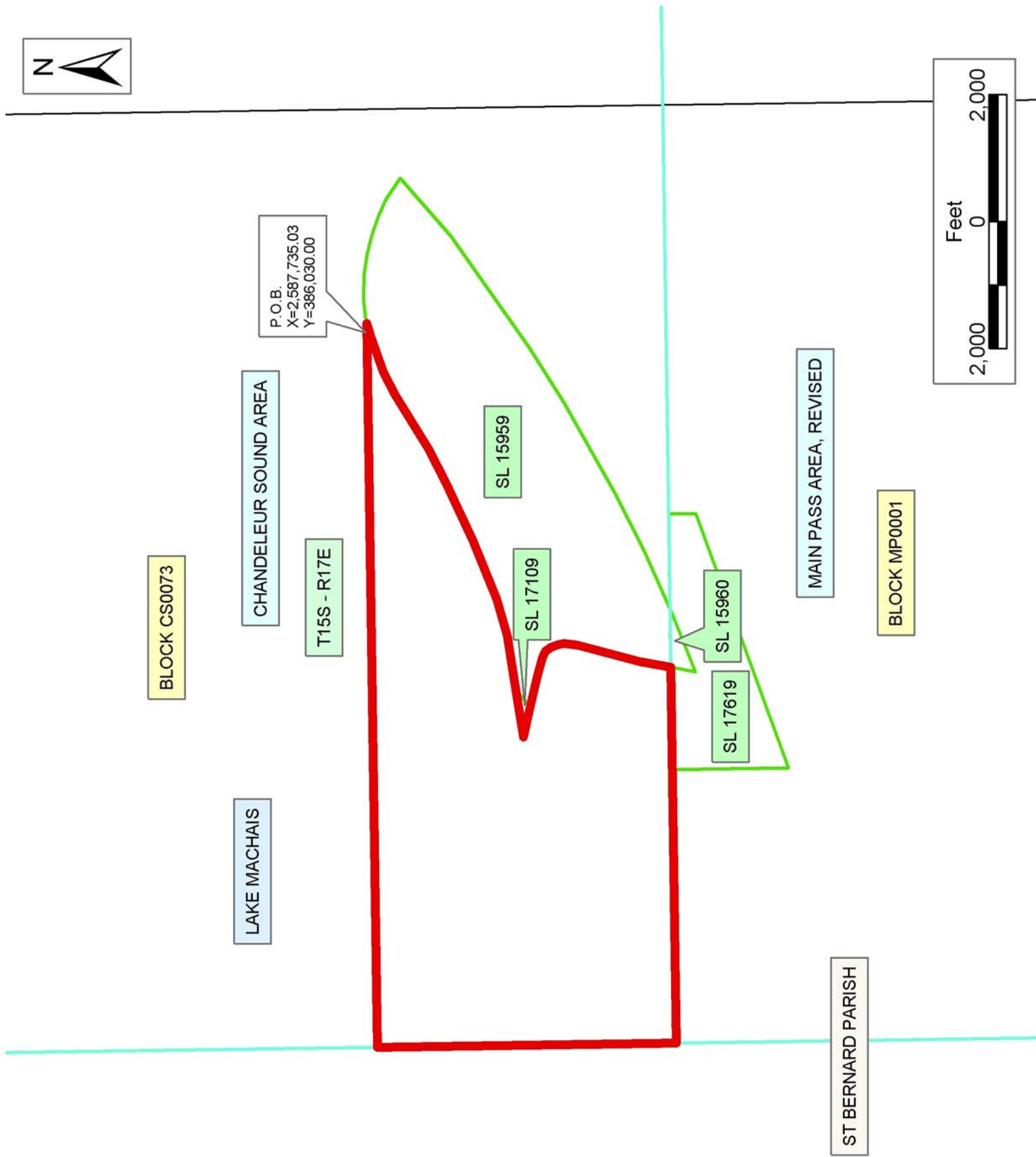
Louisiana State Mineral Board shall be without warranty of any kind, either express, implied, or statutory, including, but not limited to, the implied warranties of merchantability and fitness for a particular purpose. Should the mineral lease awarded by the Louisiana State Mineral Board be subsequently modified, cancelled or abrogated due to the existence of conflicting leases, operating agreements, private claims or other future obligations or conditions which may affect all or any portion of the leased Tract, it shall not relieve the Lessee of the obligation to pay any bonus due thereon to the Louisiana State Mineral Board, nor shall the Louisiana State Mineral Board be obligated to refund any consideration paid by the Lessor prior to such modification, cancellation, or abrogation, including, but not limited to, bonuses, rentals and royalties.

NOTE: The State of Louisiana does hereby reserve, and this lease shall be subject to, the imprescriptible right of surface use in the nature of a servitude in favor of the Department of Natural Resources, including its Offices and Commissions, for the sole purpose of implementing, constructing, servicing and maintaining approved coastal zone management and/or restoration projects. Utilization of any and all rights derived under this lease by the mineral lessee, its agents, successors or assigns, shall not interfere with nor hinder the reasonable surface use by the Department of Natural Resources, its Offices or Commissions, as herein above reserved.

NOTE: The Department of Wildlife and Fisheries has designated certain areas in the coastal waters of the State of Louisiana as Oyster Seed Bed Areas. The exact location of those Seed Bed Areas must be obtained from the Department of Wildlife and Fisheries and any work done under a mineral lease from the State of Louisiana may necessarily be conducted in conformity with the rules and regulations promulgated by the said Department of Wildlife and Fisheries for Oyster Seed Bed Areas.

Applicant: Energy Partners, Inc.

Bidder	Cash Payment	Price/ Acre	Rental	Oil	Gas	Other



TRACT 36087 - Portion of Block 73, Chandeleur Sound Area, St. Bernard Parish, Louisiana

All of the lands now or formerly constituting the beds and bottoms of all water bodies of every nature and description the title of which vests in the State of Louisiana, together with all islands arising therein and other lands formed by accretion or by reliction, where allowed by law, excepting tax adjudicated lands, and not presently under mineral lease on February 11, 2004, situated in St. Bernard Parish, Louisiana, and more particularly described as follows: Beginning at the Southeast corner of Block 73, Chandeleur Sound Area, having Coordinates of X = 2,591,100.00 and Y = 381,330.00; thence West 2,006.77 feet along the South boundary of said Block 73 to a point having Coordinates of X = 2,589,093.23 and Y = 381,330.00; thence North 3,367.69 feet to a point on the boundary of State Lease No. 15959, as amended having Coordinates of X = 2,589,093.23 and Y = 384,697.69; thence North 49 degrees 36 minutes 10 seconds East 1,202.25 feet along the boundary of said State Lease No. 15959, to a point having Coordinates of X = 2,590,008.83 and Y = 385,476.85; thence North 55 degrees 39 minutes 15 seconds West 399.34 feet along the boundary of said State Lease No. 15959 to a point having Coordinates of X = 2,589,679.12 and Y = 385,702.15; thence North 64 degrees 45 minutes 33 seconds West 297.24 feet along the boundary of said State Lease No. 15959 to a point having Coordinates of X = 2,589,410.26 and Y = 385,828.90; thence North 69 degrees 26 minutes 32 seconds West 303.57 feet along the boundary of said State Lease No. 15959 to a point having Coordinates of X = 2,589,126.02 and Y = 385,935.50; thence North 75 degrees 50 minutes 54 seconds West 302.06 feet along the boundary of said State Lease No. 15959 to a point having Coordinates of X = 2,588,833.13 and Y = 386,009.35; thence North 80 degrees 45 minutes 03 seconds West 128.48 feet along the boundary of said State Lease No. 15959 to a point having Coordinates of X = 2,588,706.32 and Y = 386,030.00; thence East 2,393.68 feet to a point on the East boundary of said Block 73 having Coordinates of X = 2,591,100.00 and Y = 386,030.00; thence South 4,700.00 feet along the East boundary of said Block 73 to the point of beginning, containing approximately **80 acres**, all as more particularly outlined on a plat on file in the Office of Mineral Resources, Department of Natural Resources. All bearings, distances and coordinates are based on Louisiana Coordinate System of 1927, (North or South Zone), where applicable.

NOTE: The above description of the Tract nominated for lease has been provided and corrected, where required, exclusively by the nomination party. Any mineral lease selected from this Tract and awarded by the Louisiana State Mineral Board shall be without warranty of any kind, either express, implied, or statutory, including, but not limited to, the implied warranties of merchantability and fitness for a particular purpose. Should the mineral lease awarded by the Louisiana State Mineral Board be subsequently modified, cancelled or abrogated due to the existence of conflicting leases, operating agreements, private claims or other future obligations or conditions which may affect all or any portion of the leased Tract, it shall not relieve the Lessee of the obligation to

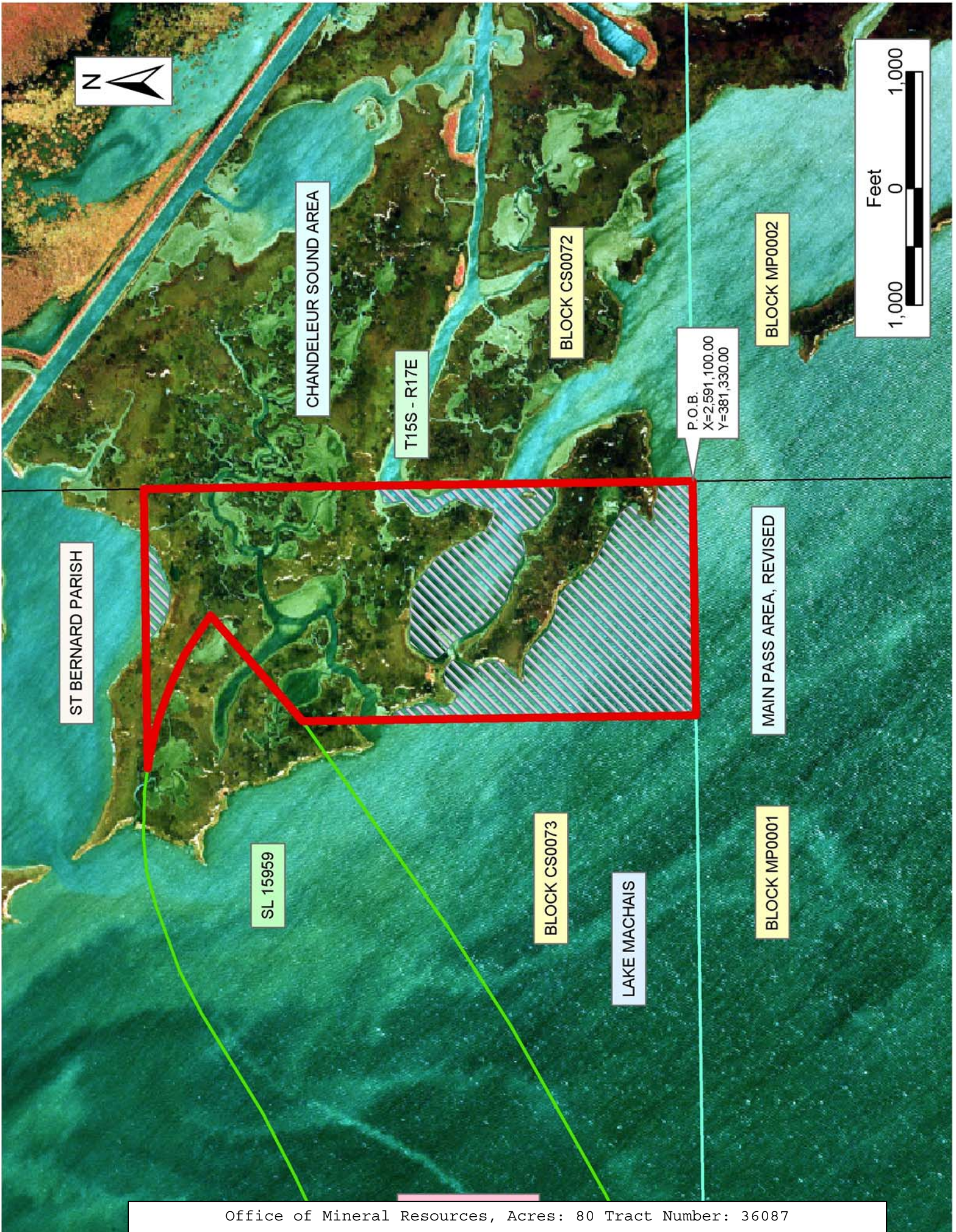
pay any bonus due thereon to the Louisiana State Mineral Board, nor shall the Louisiana State Mineral Board be obligated to refund any consideration paid by the Lessor prior to such modification, cancellation, or abrogation, including, but not limited to, bonuses, rentals and royalties.

NOTE: The State of Louisiana does hereby reserve, and this lease shall be subject to, the imprescriptible right of surface use in the nature of a servitude in favor of the Department of Natural Resources, including its Offices and Commissions, for the sole purpose of implementing, constructing, servicing and maintaining approved coastal zone management and/or restoration projects. Utilization of any and all rights derived under this lease by the mineral lessee, its agents, successors or assigns, shall not interfere with nor hinder the reasonable surface use by the Department of Natural Resources, its Offices or Commissions, as herein above reserved.

NOTE: The Department of Wildlife and Fisheries has designated certain areas in the coastal waters of the State of Louisiana as Oyster Seed Bed Areas. The exact location of those Seed Bed Areas must be obtained from the Department of Wildlife and Fisheries and any work done under a mineral lease from the State of Louisiana may necessarily be conducted in conformity with the rules and regulations promulgated by the said Department of Wildlife and Fisheries for Oyster Seed Bed Areas.

Applicant: Energy Partners, Inc.

Bidder	Cash Payment	Price/ Acre	Rental	Oil	Gas	Other



TRACT 36088 - Portion of Block 72, Chandeleur Sound Area, St. Bernard Parish, Louisiana

All of the lands now or formerly constituting the beds and bottoms of all water bodies of every nature and description the title of which vests in the State of Louisiana, together with all islands arising therein and other lands formed by accretion or by reliction, where allowed by law, excepting tax adjudicated lands, and not presently under mineral lease on February 11, 2004, situated in St. Bernard Parish, Louisiana, and more particularly described as follows: Beginning at the Southwest corner of Block 72, Chandeleur Sound Area, having Coordinates of X = 2,591,100.00 and Y = 381,330.00; thence North 4,700.00 feet along the West boundary of said Block 72 to a point having Coordinates of X = 2,591,100.00 and Y = 386,030.00; thence East 11,062.50 feet to a point having Coordinates of X = 2,602,162.50 and Y = 386,030.00; thence South 4,700.00 feet to a point on the South boundary of said Block 72, having Coordinates of X = 2,602,162.50 and Y = 381,330.00; thence West 11,062.50 feet along the South boundary of said Block 72, to the point of beginning, containing approximately **145 acres**, all as more particularly outlined on a plat on file in the Office of Mineral Resources, Department of Natural Resources. All bearings, distances and coordinates are based on Louisiana Coordinate System of 1927, (North or South Zone), where applicable.

NOTE: The above description of the Tract nominated for lease has been provided and corrected, where required, exclusively by the nomination party. Any mineral lease selected from this Tract and awarded by the Louisiana State Mineral Board shall be without warranty of any kind, either express, implied, or statutory, including, but not limited to, the implied warranties of merchantability and fitness for a particular purpose. Should the mineral lease awarded by the Louisiana State Mineral Board be subsequently modified, cancelled or abrogated due to the existence of conflicting leases, operating agreements, private claims or other future obligations or conditions which may affect all or any portion of the leased Tract, it shall not relieve the Lessee of the obligation to pay any bonus due thereon to the Louisiana State Mineral Board, nor shall the Louisiana State Mineral Board be obligated to refund any consideration paid by the Lessor prior to such modification, cancellation, or abrogation, including, but not limited to, bonuses, rentals and royalties.

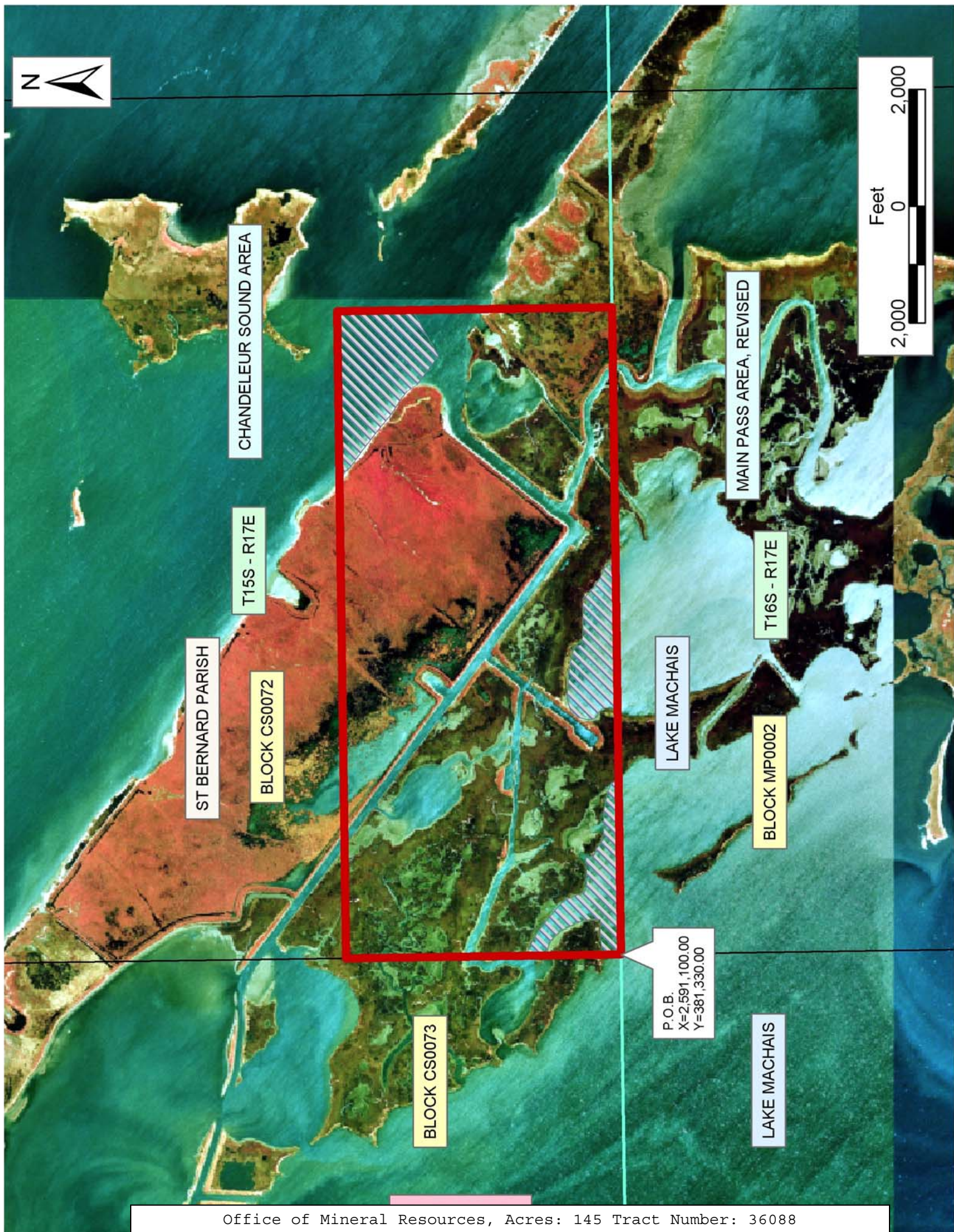
NOTE: The State of Louisiana does hereby reserve, and this lease shall be subject to, the imprescriptible right of surface use in the nature of a servitude in favor of the Department of Natural Resources, including its Offices and Commissions, for the sole purpose of implementing, constructing, servicing and maintaining approved coastal zone management and/or restoration projects. Utilization of any and all rights derived under this lease by the mineral lessee, its agents, successors or assigns, shall not interfere with nor hinder the reasonable surface use by the Department of Natural Resources, its Offices or Commissions, as herein above reserved.

NOTE: It appears, according to our records, that a portion of this Tract is located within the restrictive safety fairway area as set out by the Corps of Engineers, U.S. Army and/or the restrictive anchorage area as set out by the U.S. Coast Guard.

NOTE: The Department of Wildlife and Fisheries has designated certain areas in the coastal waters of the State of Louisiana as Oyster Seed Bed Areas. The exact location of those Seed Bed Areas must be obtained from the Department of Wildlife and Fisheries and any work done under a mineral lease from the State of Louisiana may necessarily be conducted in conformity with the rules and regulations promulgated by the said Department of Wildlife and Fisheries for Oyster Seed Bed Areas.

Applicant: Energy Partners, Inc.

Bidder	Cash Payment	Price/ Acre	Rental	Oil	Gas	Other



TRACT 36089 - Portion of Block 71, Chandeleur Sound Area, St. Bernard Parish, Louisiana

All of the lands now or formerly constituting the beds and bottoms of all water bodies of every nature and description the title of which vests in the State of Louisiana, together with all islands arising therein and other lands formed by accretion or by reliction, where allowed by law, excepting tax adjudicated lands, and not presently under mineral lease on February 11, 2004, situated in St. Bernard Parish, Louisiana, and more particularly described as follows: Beginning at a point, within Block 71, Chandeleur Sound Area, having Coordinates of X = 2,614,549.85 and Y = 386,030.00; thence East 1,600.15 feet to the Northwest corner of State Lease No. 17276 having Coordinates of X = 2,616,150.00 and Y = 386,030.00; thence South 29 degrees 03 minutes 17 seconds East 3,088.69 feet along the Western boundary of said State Lease No. 17276, to its Southwest corner having Coordinates of X = 2,617,650.00 and Y = 383,330.00; thence South 937.43 feet to a point on the Northern boundary of State Lease No. 6618, as amended, having Coordinates of X = 2,617,650.00 and Y = 382,392.57; thence North 77 degrees 38 minutes 47 seconds West 890.62 feet along the Northern boundary of said State Lease No. 6618 to a point having Coordinates of X = 2,616,780.00 and Y = 382,583.11; thence North 77 degrees 38 minutes 32 seconds West 1,555.47 feet along the Northern boundary of said State Lease No. 6618 to a point having Coordinates of X = 2,615,260.58 and Y = 382,916.07; thence North 87 degrees 55 minutes 39 seconds West 711.20 feet along the Northern boundary of said State Lease No. 6618 to a point having Coordinates of X = 2,614,549.85 and Y = 382,941.79; thence North 3,088.21 feet to the point of beginning, containing approximately **189.28 acres**, all as more particularly outlined on a plat on file in the Office of Mineral Resources, Department of Natural Resources. All bearings, distances and coordinates are based on Louisiana Coordinate System of 1927, (North or South Zone), where applicable.

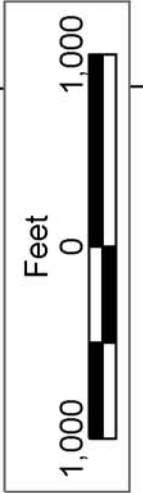
NOTE: The above description of the Tract nominated for lease has been provided and corrected, where required, exclusively by the nomination party. Any mineral lease selected from this Tract and awarded by the Louisiana State Mineral Board shall be without warranty of any kind, either express, implied, or statutory, including, but not limited to, the implied warranties of merchantability and fitness for a particular purpose. Should the mineral lease awarded by the Louisiana State Mineral Board be subsequently modified, cancelled or abrogated due to the existence of conflicting leases, operating agreements, private claims or other future obligations or conditions which may affect all or any portion of the leased Tract, it shall not relieve the Lessee of the obligation to pay any bonus due thereon to the Louisiana State Mineral Board, nor shall the Louisiana State Mineral Board be obligated to refund any consideration paid by the Lessor prior to such modification, cancellation, or abrogation, including, but not limited to, bonuses, rentals and royalties.

NOTE: The State of Louisiana does hereby reserve, and this lease shall be subject to, the imprescriptible right of surface use in the nature of a servitude in favor of the Department of Natural Resources, including its Offices and Commissions, for the sole purpose of implementing, constructing, servicing and maintaining approved coastal zone management and/or restoration projects. Utilization of any and all rights derived under this lease by the mineral lessee, its agents, successors or assigns, shall not interfere with nor hinder the reasonable surface use by the Department of Natural Resources, its Offices or Commissions, as herein above reserved.

NOTE: The Department of Wildlife and Fisheries has designated certain areas in the coastal waters of the State of Louisiana as Oyster Seed Bed Areas. The exact location of those Seed Bed Areas must be obtained from the Department of Wildlife and Fisheries and any work done under a mineral lease from the State of Louisiana may necessarily be conducted in conformity with the rules and regulations promulgated by the said Department of Wildlife and Fisheries for Oyster Seed Bed Areas.

Applicant: Energy Partners, Inc.

Bidder	Cash Payment	Price/ Acre	Rental	Oil	Gas	Other



SL 17276

P.O.B.
X=2,614,549.85
Y=386,030.00

BLOCK CS0071

CHANDELEUR SOUND AREA

SL 6618

MAIN PASS AREA, REVISED

TRACT 36090 - Portion of Block 71, Chandeleur Sound Area, St. Bernard Parish, Louisiana

All of the lands now or formerly constituting the beds and bottoms of all water bodies of every nature and description the title of which vests in the State of Louisiana, together with all islands arising therein and other lands formed by accretion or by reliction, where allowed by law, excepting tax adjudicated lands, and not presently under mineral lease on February 11, 2004, situated in St. Bernard Parish, Louisiana, and more particularly described as follows: Beginning at the Southeast corner of Block 71, Chandeleur Sound Area, having Coordinates of X = 2,620,600.00 and Y = 381,330.00; thence West 2,480.73 feet along the South boundary of said Block 71 to a point on the boundary of State Lease No. 12503, as amended, having Coordinates of X = 2,618,119.27 and Y = 381,330.00; thence North 76 degrees 38 minutes 28 seconds East 30.64 feet along the boundary of said State Lease No. 12503, to a point having Coordinates of X = 2,618,149.08 and Y = 381,337.08; thence North 70 degrees 28 minutes 32 seconds West 197.16 feet along the boundary of said State Lease No. 12503, to a point having Coordinates of X = 2,617,963.26 and Y = 381,402.97; thence North 73 degrees 50 minutes 31 seconds West 472.51 feet along the boundary of said State Lease No. 12503, to a point, said point also being on the boundary of State Lease No. 6618, as amended, having Coordinates of X = 2,617,509.41 and Y = 381,534.46; thence North 82 degrees 45 minutes 11 seconds East 818.39 feet along the boundary of said State Lease No. 6618, to a point having Coordinates of X = 2,618,321.27 and Y = 381,637.70; thence North 73 degrees 29 minutes 10 seconds East 1,007.60 feet along the boundary of said State Lease No. 6618, to a point having Coordinates of X = 2,619,287.31 and Y = 381,924.11; thence North 72 degrees 20 minutes 37 seconds West 1,160.73 feet along the boundary of said State Lease No. 6618, to a point having Coordinates of X = 2,618,181.26 and Y = 382,276.17; thence North 77 degrees 38 minutes 32 seconds West 543.86 feet along the boundary of said State Lease No. 6618, to a point having Coordinates of X = 2,617,650.00 and Y = 382,392.57; thence North 937.43 feet to the Southwest corner of State Lease No. 17276 having Coordinates of X = 2,617,650.00 and Y = 383,330.00; thence East 2,950.00 feet along the South boundary of said State Lease No. 17276, to its Southeast corner, said corner also being a point on the East boundary of said Block 71 having Coordinates of X = 2,620,600.00 and Y = 383,330.00; thence South 2,000.00 feet along the East boundary of said Block 71 to the point of beginning, containing approximately **116.80 acres**, all as more particularly outlined on a plat on file in the Office of Mineral Resources, Department of Natural Resources. All bearings, distances and coordinates are based on Louisiana Coordinate System of 1927, (North or South Zone), where applicable.

NOTE: The above description of the Tract nominated for lease has been provided and corrected, where required, exclusively by the nomination party. Any mineral lease selected from this Tract and awarded by the Louisiana State Mineral Board shall be without warranty of any kind, either express, implied, or statutory, including, but not limited to, the

implied warranties of merchantability and fitness for a particular purpose. Should the mineral lease awarded by the Louisiana State Mineral Board be subsequently modified, cancelled or abrogated due to the existence of conflicting leases, operating agreements, private claims or other future obligations or conditions which may affect all or any portion of the leased Tract, it shall not relieve the Lessee of the obligation to pay any bonus due thereon to the Louisiana State Mineral Board, nor shall the Louisiana State Mineral Board be obligated to refund any consideration paid by the Lessor prior to such modification, cancellation, or abrogation, including, but not limited to, bonuses, rentals and royalties.

NOTE: The State of Louisiana does hereby reserve, and this lease shall be subject to, the imprescriptible right of surface use in the nature of a servitude in favor of the Department of Natural Resources, including its Offices and Commissions, for the sole purpose of implementing, constructing, servicing and maintaining approved coastal zone management and/or restoration projects. Utilization of any and all rights derived under this lease by the mineral lessee, its agents, successors or assigns, shall not interfere with nor hinder the reasonable surface use by the Department of Natural Resources, its Offices or Commissions, as herein above reserved.

NOTE: The Department of Wildlife and Fisheries has designated certain areas in the coastal waters of the State of Louisiana as Oyster Seed Bed Areas. The exact location of those Seed Bed Areas must be obtained from the Department of Wildlife and Fisheries and any work done under a mineral lease from the State of Louisiana may necessarily be conducted in conformity with the rules and regulations promulgated by the said Department of Wildlife and Fisheries for Oyster Seed Bed Areas.

Applicant: Energy Partners, Inc.

Bidder	Cash Payment	Price/ Acre	Rental	Oil	Gas	Other

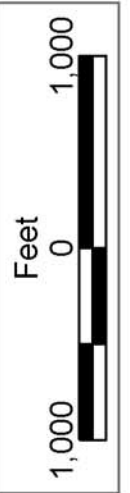


BLOCK CS0070

SL 17278

SL 17279

BLOCK MP0004



P.O.B
X=2,620,600.00
Y=381,330.00

ST BERNARD PARISH

BLOCK CS0071

SL 17276

BLOCK MP0003

SL 17277

SL 16713

MAIN PASS AREA, REVISED

CHANDELEUR SOUND AREA

SL 6618

SL 12503

SL 12789

TRACT 36091 - Portion of Block 23, Breton Sound Area, Plaquemines Parish, Louisiana

All of the lands now or formerly constituting the beds and bottoms of all water bodies of every nature and description the title of which vests in the State of Louisiana, together with all islands arising therein and other lands formed by accretion or by reliction, where allowed by law, excepting tax adjudicated lands, and not presently under mineral lease on February 11, 2004, situated in Plaquemines Parish, Louisiana, and more particularly described as follows: Beginning at a point on the West line of Block 23, Breton Sound Area having Coordinates of X = 2,723,850.00 and Y = 344,455.00; thence North 7,375.00 feet to the Northwest corner of said Block 23 having Coordinates of X = 2,723,850.00 and Y = 351,830.00; thence East 14,750.00 feet to the Northeast corner of said Block 23 having Coordinates of X = 2,738,600.00 and Y = 351,830.00; thence South 3,313.93 feet to a point on the Coastline derived from the June 16, 1975 Decree in the United States vs. Louisiana No. 9 Original having Coordinates of X = 2,738,600.00 and Y = 348,516.07; thence South 37 degrees 15 minutes 00 seconds West 5,085.74 feet along said Coastline to a point being the common Northern corner of State Lease No. 16258 as amended and State Lease No. 16273 as amended, having Coordinates of X = 2,735,521.63 and Y = 344,467.81; thence North 70 degrees 40 minutes 53 seconds West 5,854.86 feet along the Northern line of said State Lease No. 16273, to the Northeast corner of State Lease No. 16272 as amended, having Coordinates of X = 2,729,996.44 and Y = 346,404.71; thence North 70 degrees 40 minutes 53 seconds West 2,084.62 feet along the Northern boundary of said State Lease No. 16272 to its Northwest corner having Coordinates of X = 2,728,029.20 and Y = 347,094.34; thence South 1,793.63 feet along the West boundary of said State Lease No. 16272 to its Southwest corner having Coordinates of X = 2,728,029.20 and Y = 345,300.71; thence South 46 degrees 03 minutes 10 seconds East 1,218.61 feet along the South boundary of said State Lease No. 16272 to a point having Coordinates of X = 2,728,906.57 and Y = 344,455.00; thence West 5,056.57 feet to the point of beginning, containing approximately **2,133.75 acres**, all as more particularly outlined on a plat on file in the Office of Mineral Resources, Department of Natural Resources. All bearings, distances and coordinates are based on Louisiana Coordinate System of 1927, (North or South Zone), where applicable.

NOTE: The above description of the Tract nominated for lease has been provided and corrected, where required, exclusively by the nomination party. Any mineral lease selected from this Tract and awarded by the Louisiana State Mineral Board shall be without warranty of any kind, either express, implied, or statutory, including, but not limited to, the implied warranties of merchantability and fitness for a particular purpose. Should the mineral lease awarded by the Louisiana State Mineral Board be subsequently modified, cancelled or abrogated due to the existence of conflicting leases, operating agreements, private claims or other future obligations or conditions which may affect all or any portion of the leased Tract, it shall not relieve the Lessee of the obligation to

pay any bonus due thereon to the Louisiana State Mineral Board, nor shall the Louisiana State Mineral Board be obligated to refund any consideration paid by the Lessor prior to such modification, cancellation, or abrogation, including, but not limited to, bonuses, rentals and royalties.

NOTE: The State of Louisiana does hereby reserve, and this lease shall be subject to, the imprescriptible right of surface use in the nature of a servitude in favor of the Department of Natural Resources, including its Offices and Commissions, for the sole purpose of implementing, constructing, servicing and maintaining approved coastal zone management and/or restoration projects. Utilization of any and all rights derived under this lease by the mineral lessee, its agents, successors or assigns, shall not interfere with nor hinder the reasonable surface use by the Department of Natural Resources, its Offices or Commissions, as herein above reserved.

Applicant: Stephen M. Jenkins, Inc.

Bidder	Cash Payment	Price/ Acre	Rental	Oil	Gas	Other



PLAQUEMINES PARISH

BLOCK BS0009

BLOCK BS0024



BLOCK BS0010

BLOCK BS0023

BRETON SOUND AREA

BLOCK BS0011

S.L. 8191

S.L. 2326

P.O.B.
X=2,723,850.00
Y=344,455.00

BLOCK BS0022

S.L. 16272

S.L. 16273

S.L. 17070

S.L. 16258