

**TRACT 36076 - Jefferson and St. Charles Parishes, Louisiana**

All of the lands now or formerly constituting the beds and bottoms of all water bodies of every nature and description the title of which vests in the State of Louisiana, together with all islands arising therein and other lands formed by accretion or by reliction, where allowed by law, excepting tax adjudicated lands, and not presently under mineral lease on February 11, 2004, situated in Jefferson and St. Charles Parishes, Louisiana, and more particularly described as follows: Beginning at a point having Coordinates of X = 2,363,850.00 and Y = 424,400.00; thence East 4,250.00 feet to a point having Coordinates of X = 2,368,100.00 and Y = 424,400.00; thence South 26 degrees 13 minutes 55 seconds East 1,895.18 feet to the most Northerly Northwest corner of State Lease No. 17611 having Coordinates of X = 2,368,937.68 and Y = 422,700.00; thence South 26 degrees 13 minutes 55 seconds East 1,950.92 feet along the West line of said State Lease No. 17611 to a corner, also being the Northwest corner of State Lease No. 17887, having Coordinates of X = 2,369,800.00 and Y = 420,950.00; thence South 3,850.00 feet along the West line of said State Lease No. 17887 to its Southwest corner, also being a point on the boundary of said State Lease No. 17611 having Coordinates of X = 2,369,800.00 and Y = 417,100.00; thence along the boundary of said State Lease No. 17611 the following courses: West 1,595.00 feet, South 905.00 feet, East 2,700.00 feet, and South 1,595.00 feet to a point having Coordinates of X = 2,370,905.00 and Y = 414,600.00; thence West 5,359.00 feet to a point having Coordinates of X = 2,365,546.00 and Y = 414,600.00; thence North 4,400.00 feet to the Southeast corner of State Lease No. 16997 having Coordinates of X = 2,365,546.00 and Y = 419,000.00; thence along the boundary of said State Lease No. 16997 the following courses: North 4,076.00 feet and West 1,696.00 feet to a point having Coordinates of X = 2,363,850.00 and Y = 423,076.00; thence North 1,324.00 feet to the point of beginning, **LESS AND EXCEPT**, that portion, if any, of the Timken Wildlife Management Area, that may lie within the above described tract, containing approximately **428 acres**, all as more particularly outlined on a plat on file in the Office of Mineral Resources, Department of Natural Resources. All bearings, distances and coordinates are based on Louisiana Coordinate System of 1927, (North or South Zone), where applicable.

NOTE: The above description of the Tract nominated for lease has been provided and corrected, where required, exclusively by the nomination party. Any mineral lease selected from this Tract and awarded by the Louisiana State Mineral Board shall be without warranty of any kind, either express, implied, or statutory, including, but not limited to, the implied warranties of merchantability and fitness for a particular purpose. Should the mineral lease awarded by the Louisiana State Mineral Board be subsequently modified, cancelled or abrogated due to the existence of conflicting leases, operating agreements, private claims or other future obligations or conditions which may affect all or any portion of the leased Tract, it shall not relieve the Lessee of the obligation to pay any bonus due thereon to the Louisiana State Mineral Board, nor shall the Louisiana State Mineral Board be obligated to refund any consideration

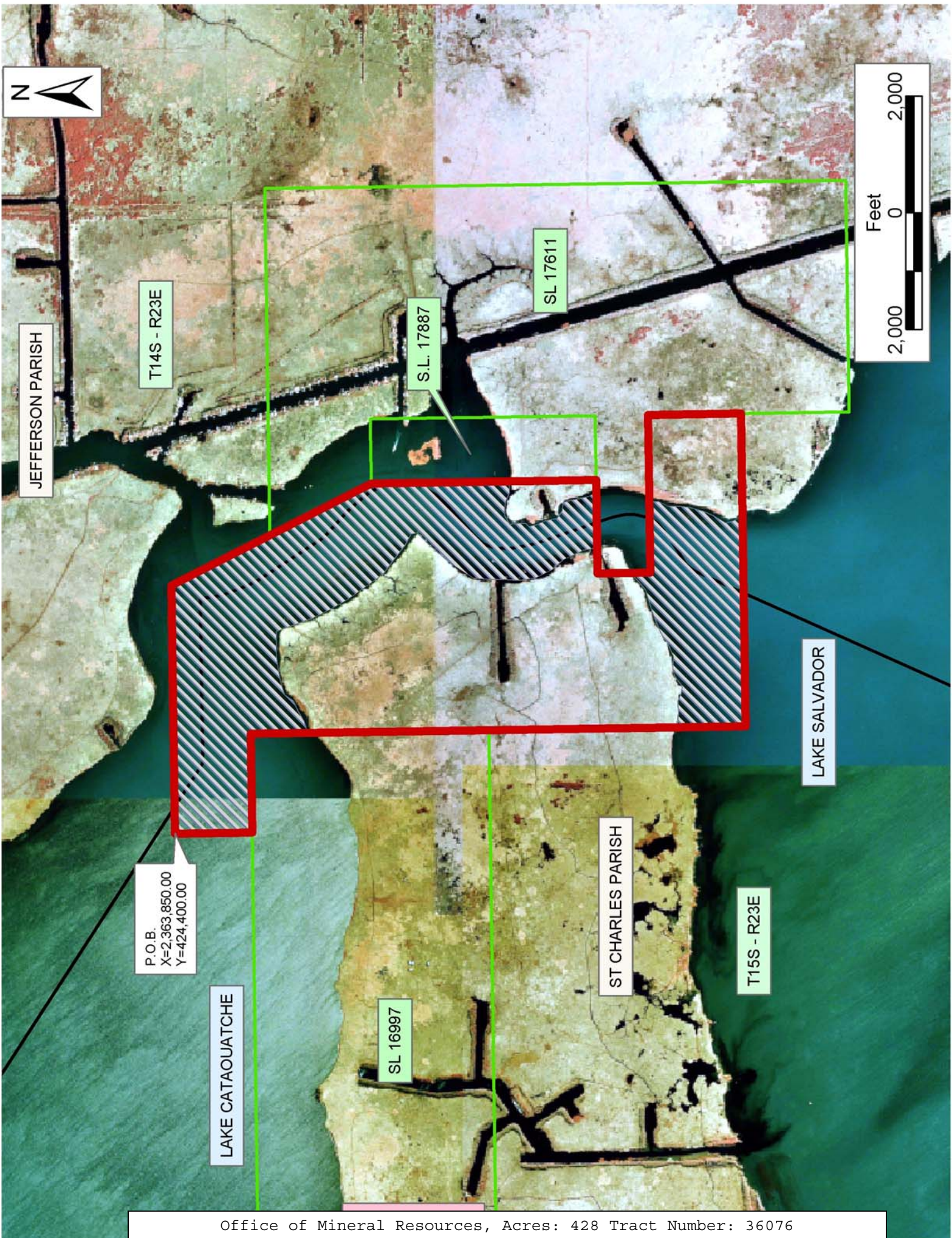
paid by the Lessor prior to such modification, cancellation, or abrogation, including, but not limited to, bonuses, rentals and royalties.

NOTE: The State of Louisiana does hereby reserve, and this lease shall be subject to, the imprescriptible right of surface use in the nature of a servitude in favor of the Department of Natural Resources, including its Offices and Commissions, for the sole purpose of implementing, constructing, servicing and maintaining approved coastal zone management and/or restoration projects. Utilization of any and all rights derived under this lease by the mineral lessee, its agents, successors or assigns, shall not interfere with nor hinder the reasonable surface use by the Department of Natural Resources, its Offices or Commissions, as herein above reserved.

Applicant: Doyle Land Services, Inc.

Bidder	Cash Payment	Price/Acre	Rental	Oil	Gas	Other







**TRACT 36077 - Portion of Block 71, Chandeleur Sound Area, St. Bernard Parish, Louisiana**

All of the lands now or formerly constituting the beds and bottoms of all water bodies of every nature and description the title of which vests in the State of Louisiana, together with all islands arising therein and other lands formed by accretion or by reliction, where allowed by law, excepting tax adjudicated lands, and not presently under mineral lease on February 11, 2004, situated in St. Bernard Parish, Louisiana, and more particularly described as follows: Beginning at a point on the West boundary of Block 71, Chandeleur Sound Area, having Coordinates of X = 2,605,850.00 and Y = 391,180.00; thence North 4,900.00 feet along the said West boundary of Block 71, to its Northwest corner, said corner also being the Northwest corner of State Lease No. 4147, as amended, having Coordinates of X = 2,605,850.00 and Y = 396,080.00; thence South 45 degrees 00 minutes 00 seconds East 6,929.65 feet along the West boundary of said State Lease No. 4147 to its Southwest corner having Coordinates of X = 2,610,750.00 and Y = 391,180.00; thence West 4,900.00 feet to the point of beginning, containing approximately **275.60 acres**, all as more particularly outlined on a plat on file in the Office of Mineral Resources, Department of Natural Resources. All bearings, distances and coordinates are based on Louisiana Coordinate System of 1927, (North or South Zone), where applicable.

NOTE: The above description of the Tract nominated for lease has been provided and corrected, where required, exclusively by the nomination party. Any mineral lease selected from this Tract and awarded by the Louisiana State Mineral Board shall be without warranty of any kind, either express, implied, or statutory, including, but not limited to, the implied warranties of merchantability and fitness for a particular purpose. Should the mineral lease awarded by the Louisiana State Mineral Board be subsequently modified, cancelled or abrogated due to the existence of conflicting leases, operating agreements, private claims or other future obligations or conditions which may affect all or any portion of the leased Tract, it shall not relieve the Lessee of the obligation to pay any bonus due thereon to the Louisiana State Mineral Board, nor shall the Louisiana State Mineral Board be obligated to refund any consideration paid by the Lessor prior to such modification, cancellation, or abrogation, including, but not limited to, bonuses, rentals and royalties.

NOTE: The State of Louisiana does hereby reserve, and this lease shall be subject to, the imprescriptible right of surface use in the nature of a servitude in favor of the Department of Natural Resources, including its Offices and Commissions, for the sole purpose of implementing, constructing, servicing and maintaining approved coastal zone management and/or restoration projects. Utilization of any and all rights derived under this lease by the mineral lessee, its agents, successors or assigns, shall not interfere with nor hinder the reasonable surface use by the Department of Natural Resources, its Offices or Commissions, as herein above reserved.

NOTE: The Department of Wildlife and Fisheries has designated certain areas in the coastal waters of the State of Louisiana as Oyster Seed Bed Areas. The exact location of those Seed Bed Areas must be obtained from the Department of Wildlife and Fisheries and any work done under a mineral lease from the State of Louisiana may necessarily be conducted in conformity with the rules and regulations promulgated by the said Department of Wildlife and Fisheries for Oyster Seed Bed Areas.

Applicant: Energy Partners, Inc.

Bidder	Cash Payment	Price/Acre	Rental	Oil	Gas	Other



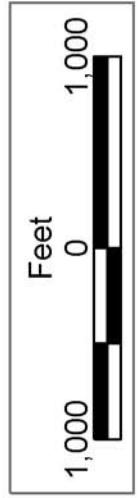
BLOCK CS0048

SL 17002

ST BERNARD PARISH

BLOCK CS0071

SL 4147



BLOCK CS0047

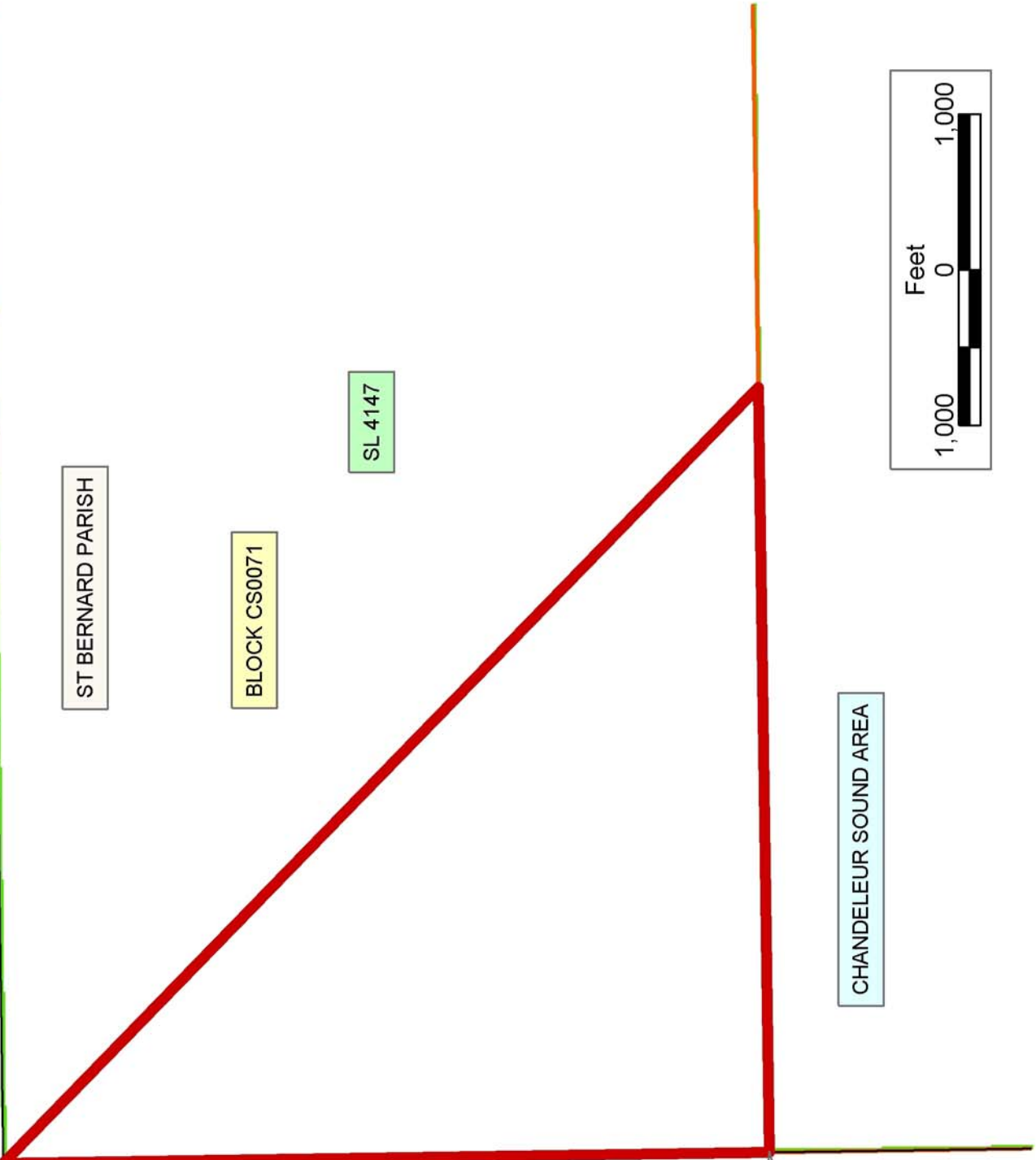
SL 4039

BLOCK CS0072

SL 16158

P.O.B.  
X=2,605,850.00  
Y=391,180.00

CHANDELEUR SOUND AREA



**TRACT 36078 - Portion of Blocks 68, and 69, Chandeleur Sound Area, St. Bernard Parish, Louisiana**

All of the lands now or formerly constituting the beds and bottoms of all water bodies of every nature and description the title of which vests in the State of Louisiana, together with all islands arising therein and other lands formed by accretion or by reliction, where allowed by law, excepting tax adjudicated lands, and not presently under mineral lease on February 11, 2004, situated in St. Bernard Parish, Louisiana, and more particularly described as follows: Beginning at a point on the North line of Block 68, Chandeleur Sound Area, having Coordinates of X = 2,653,300.00 and Y = 396,080.00; thence South 14,750.00 feet to a point on the South line of said Block 68 having Coordinates of X = 2,653,300.00 and Y = 381,330.00; thence West 3,200.00 feet along the South line of said Block 68 to its Southwest corner, said corner also being the Southeast corner of Block 69, Chandeleur Sound Area, having Coordinates of X = 2,650,100.00 and Y = 381,330.00; thence West 4,560.00 feet along the South line of said Block 69 to a point having Coordinates of X = 2,645,540.00 and Y = 381,330.00; thence North 503.00 feet to the most Southerly Southeast corner of State Lease No. 16799 having Coordinates of X = 2,645,540.00 and Y = 381,833.00; thence along the boundary of said State Lease No. 16799 the following courses: North 2,844.00 feet to a point having Coordinates of X = 2,645,540.00 and Y = 384,677.00; East 500.00 feet to a point having Coordinates of X = 2,646,040.00 and Y = 384,677.00 and North 2,699.35 feet to its Northeast corner having Coordinates of X = 2,646,040.00 and Y = 387,376.35; thence North 8,703.65 feet to a point on the North line of said Block 69 having Coordinates of X = 2,646,040.00 and Y = 396,080.00; thence East 4,060.00 feet along the North line of said Block 69 to its Northeast corner, said corner also being the Northwest corner of said Block 68, having Coordinates of X = 2,650,100.00 and Y = 396,080.00; thence East 3,200.00 feet along the North line of said Block 68 to the point of beginning, containing approximately **2,496.75 acres**, all as more particularly outlined on a plat on file in the Office of Mineral Resources, Department of Natural Resources. All bearings, distances and coordinates are based on Louisiana Coordinate System of 1927, (North or South Zone), where applicable.

NOTE: The above description of the Tract nominated for lease has been provided and corrected, where required, exclusively by the nomination party. Any mineral lease selected from this Tract and awarded by the Louisiana State Mineral Board shall be without warranty of any kind, either express, implied, or statutory, including, but not limited to, the implied warranties of merchantability and fitness for a particular purpose. Should the mineral lease awarded by the Louisiana State Mineral Board be subsequently modified, cancelled or abrogated due to the existence of conflicting leases, operating agreements, private claims or other future obligations or conditions which may affect all or any portion of the leased Tract, it shall not relieve the Lessee of the obligation to pay any bonus due thereon to the Louisiana State Mineral Board, nor shall the Louisiana State Mineral Board be obligated to refund any consideration

paid by the Lessor prior to such modification, cancellation, or abrogation, including, but not limited to, bonuses, rentals and royalties.

NOTE: The Office of Mineral Resources will require a minimum bonus of \$190 per acre and a minimum royalty of 22%.

NOTE: The State of Louisiana does hereby reserve, and this lease shall be subject to, the imprescriptible right of surface use in the nature of a servitude in favor of the Department of Natural Resources, including its Offices and Commissions, for the sole purpose of implementing, constructing, servicing and maintaining approved coastal zone management and/or restoration projects. Utilization of any and all rights derived under this lease by the mineral lessee, its agents, successors or assigns, shall not interfere with nor hinder the reasonable surface use by the Department of Natural Resources, its Offices or Commissions, as herein above reserved.

Applicant: A.J. Motte & Associates

Bidder	Cash Payment	Price/Acre	Rental	Oil	Gas	Other





CHANDELEUR SOUND AREA

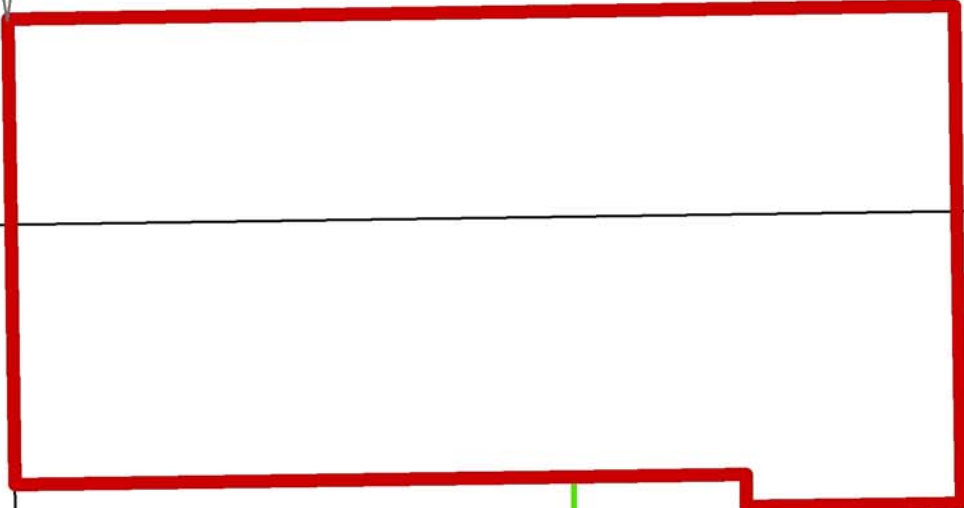
P.O.B.  
X=2,653,300.00  
Y=396,080.00

BLOCK CS0068

BLOCK BS0002



ST BERNARD PARISH



BRETON SOUND AREA

BLOCK CS0069

SL 16799

BLOCK BS0001

**TRACT 36079 - Portion of Blocks 67, and 68, Chandeleur Sound Area, St. Bernard Parish, Louisiana**

All of the lands now or formerly constituting the beds and bottoms of all water bodies of every nature and description the title of which vests in the State of Louisiana, together with all islands arising therein and other lands formed by accretion or by reliction, where allowed by law, excepting tax adjudicated lands, and not presently under mineral lease on February 11, 2004, situated in St. Bernard Parish, Louisiana, and more particularly described as follows: Beginning at a point on the North line of Block 68, Chandeleur Sound Area, having Coordinates of X = 2,653,300.00 and Y = 396,080.00; thence East 11,550.00 feet along the North line of said Block 68 to its Northeast corner, said corner also being the Northwest corner of Block 67, Chandeleur Sound Area, having Coordinates of X = 2,664,850.00 and Y = 396,080.00; thence East 5,460.00 feet along the North line of said Block 67 to a point having Coordinates of X = 2,670,310.00 and Y = 396,080.00; thence South 7,375.00 feet to a point having Coordinates of X = 2,670,310.00 and Y = 388,705.00; thence West 4,160.00 feet to a point on the East line of State Lease No. 17123 having Coordinates of X = 2,666,150.00 and Y = 388,705.00; thence North 2,825.00 feet along the East line of said State Lease No. 17123 to its Northeast corner having Coordinates of X = 2,666,150.00 and Y = 391,530.00; thence West 1,300.00 feet along the North line of said State Lease No. 17123 to its Northwest corner, said corner also being the Northeast corner of State Lease No. 17122, having Coordinates of X = 2,664,850.00 and Y = 391,530.00; thence West 4,575.00 feet along the North line of said State Lease No. 17122 to its Northwest corner having Coordinates of X = 2,660,275.00 and Y = 391,530.00; thence South 2,825.00 feet along the West line of said State Lease No. 17122 to a point having Coordinates of X = 2,660,275.00 and Y = 388,705.00; thence West 6,975.00 feet to a point having Coordinates of X = 2,653,300.00 and Y = 388,705.00; thence North 7,375.00 feet to the point of beginning, containing approximately **2,498.90 acres**, all as more particularly outlined on a plat on file in the Office of Mineral Resources, Department of Natural Resources. All bearings, distances and coordinates are based on Louisiana Coordinate System of 1927, (North or South Zone), where applicable.

NOTE: The above description of the Tract nominated for lease has been provided and corrected, where required, exclusively by the nomination party. Any mineral lease selected from this Tract and awarded by the Louisiana State Mineral Board shall be without warranty of any kind, either express, implied, or statutory, including, but not limited to, the implied warranties of merchantability and fitness for a particular purpose. Should the mineral lease awarded by the Louisiana State Mineral Board be subsequently modified, cancelled or abrogated due to the existence of conflicting leases, operating agreements, private claims or other future obligations or conditions which may affect all or any portion of the leased Tract, it shall not relieve the Lessee of the obligation to pay any bonus due thereon to the Louisiana State Mineral Board, nor shall the Louisiana State Mineral Board be obligated to refund any consideration

paid by the Lessor prior to such modification, cancellation, or abrogation, including, but not limited to, bonuses, rentals and royalties.

NOTE: The Office of Mineral Resources will require a minimum bonus of \$190 per acre and a minimum royalty of 22%.

NOTE: The State of Louisiana does hereby reserve, and this lease shall be subject to, the imprescriptible right of surface use in the nature of a servitude in favor of the Department of Natural Resources, including its Offices and Commissions, for the sole purpose of implementing, constructing, servicing and maintaining approved coastal zone management and/or restoration projects. Utilization of any and all rights derived under this lease by the mineral lessee, its agents, successors or assigns, shall not interfere with nor hinder the reasonable surface use by the Department of Natural Resources, its Offices or Commissions, as herein above reserved.

Applicant: A.J. Motte & Associates

Bidder	Cash Payment	Price/Acre	Rental	Oil	Gas	Other



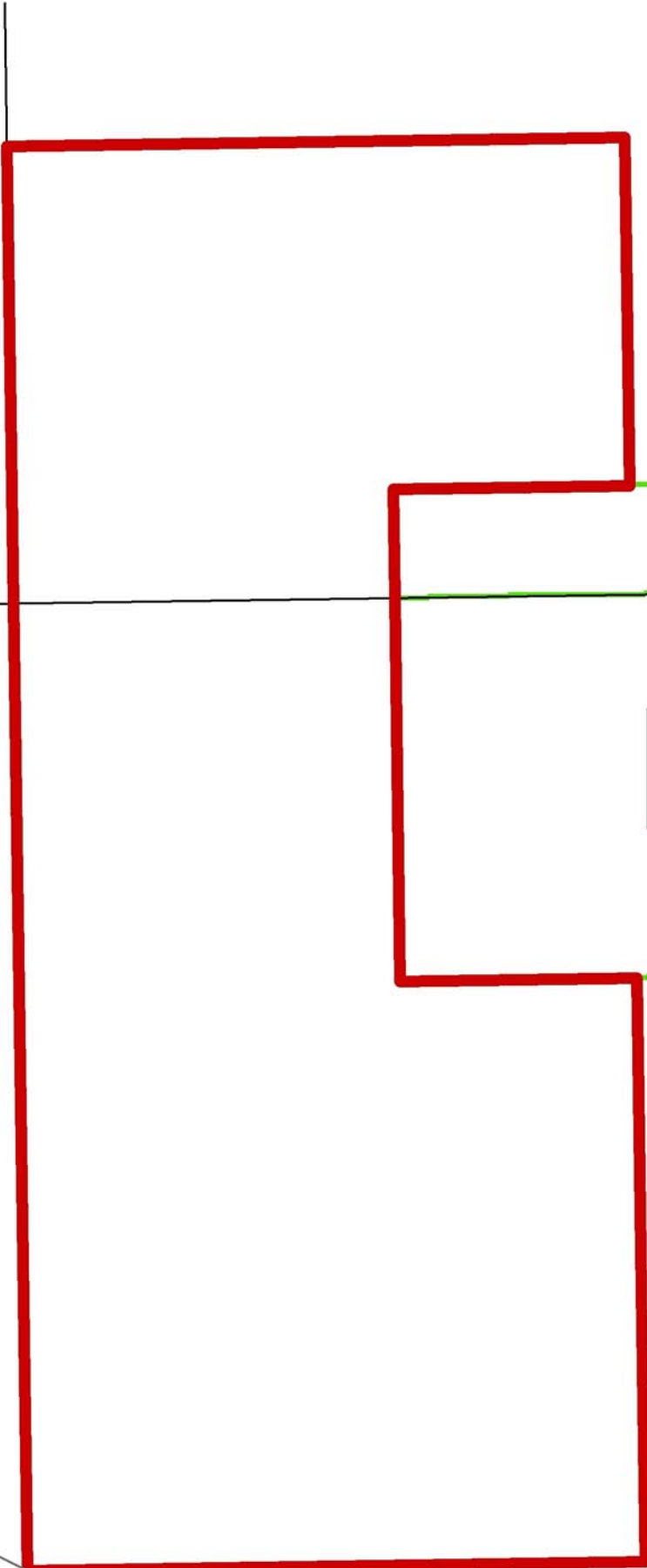
BLOCK CS0052

ST BERNARD PARISH

CHANDELEUR SOUND AREA

BLOCK CS0051

P.O.B.  
X=2,653,300.00  
Y=396,080.00



BLOCK CS0067

SL 17123

SL 17122

BLOCK CS0068



**TRACT 36080 - Assumption Parish, Louisiana**

All of the lands now or formerly constituting the beds and bottoms of all water bodies of every nature and description the title of which vests in the State of Louisiana, together with all islands arising therein and other lands formed by accretion or by reliction, where allowed by law, excepting tax adjudicated lands, and not presently under mineral lease on February 11, 2004, situated in Assumption Parish, Louisiana, and more particularly described as follows: Beginning at a point having Coordinates of X = 2,101,100.00 and Y = 394,200.00; thence West 13,300.00 feet to a point having Coordinates of X = 2,087,800.00 and Y = 394,200.00; thence North 8,200.00 feet to a point having Coordinates of X = 2,087,800.00 and Y = 402,400.00; thence East 13,300.00 feet to a point having Coordinates of X = 2,101,100.00 and Y = 402,400.00; thence South 8,200.00 feet to the point of beginning, containing approximately **46 acres**, all as more particularly outlined on a plat on file in the Office of Mineral Resources, Department of Natural Resources. All bearings, distances and coordinates are based on Louisiana Coordinate System of 1927, (North or South Zone), where applicable.

NOTE: The above description of the Tract nominated for lease has been provided and corrected, where required, exclusively by the nomination party. Any mineral lease selected from this Tract and awarded by the Louisiana State Mineral Board shall be without warranty of any kind, either express, implied, or statutory, including, but not limited to, the implied warranties of merchantability and fitness for a particular purpose. Should the mineral lease awarded by the Louisiana State Mineral Board be subsequently modified, cancelled or abrogated due to the existence of conflicting leases, operating agreements, private claims or other future obligations or conditions which may affect all or any portion of the leased Tract, it shall not relieve the Lessee of the obligation to pay any bonus due thereon to the Louisiana State Mineral Board, nor shall the Louisiana State Mineral Board be obligated to refund any consideration paid by the Lessor prior to such modification, cancellation, or abrogation, including, but not limited to, bonuses, rentals and royalties.

NOTE: The State of Louisiana does hereby reserve, and this lease shall be subject to, the imprescriptible right of surface use in the nature of a servitude in favor of the Department of Natural Resources, including its Offices and Commissions, for the sole purpose of implementing, constructing, servicing and maintaining approved coastal zone management and/or restoration projects. Utilization of any and all rights derived under this lease by the mineral lessee, its agents, successors or assigns, shall not interfere with nor hinder the reasonable surface use by the Department of Natural Resources, its Offices or Commissions, as herein above reserved.



Applicant: Cse Exploration

Bidder	Cash Payment	Price/Acre	Rental	Oil	Gas	Other





T15S - R14E

ASSUMPTION PARISH

BAYOU SHERMAN

P.O.B.  
X=2,101,100.00  
Y=394,200.00





**TRACT 36081 - Portion of Block 73, Chandeleur Sound Area, St. Bernard Parish, Louisiana**

All of the lands now or formerly constituting the beds and bottoms of all water bodies of every nature and description the title of which vests in the State of Louisiana, together with all islands arising therein and other lands formed by accretion or by reliction, where allowed by law, excepting tax adjudicated lands, and not presently under mineral lease on February 11, 2004, situated in St. Bernard Parish, Louisiana, and more particularly described as follows: Beginning at a point within Block 73, Chandeleur Sound Area, said point located on the Northern boundary of State Lease No. 15959, as amended having Coordinates of X = 2,587,735.03 and Y = 386,030.00; thence West 11,385.03 feet to a point on the West boundary of said Block 73 having Coordinates of X = 2,576,350.00 and Y = 386,030.00; thence North 7,370.00 feet along the West boundary of said Block 73 to a point having Coordinates of X = 2,576,350.00 and Y = 393,400.00; thence East 11,385.03 feet to a point having Coordinates of X = 2,587,735.03 and Y = 393,400.00; thence South 7,370.00 feet to the point of beginning, containing approximately **1304 acres**, all as more particularly outlined on a plat on file in the Office of Mineral Resources, Department of Natural Resources. All bearings, distances and coordinates are based on Louisiana Coordinate System of 1927, (North or South Zone), where applicable.

NOTE: The above description of the Tract nominated for lease has been provided and corrected, where required, exclusively by the nomination party. Any mineral lease selected from this Tract and awarded by the Louisiana State Mineral Board shall be without warranty of any kind, either express, implied, or statutory, including, but not limited to, the implied warranties of merchantability and fitness for a particular purpose. Should the mineral lease awarded by the Louisiana State Mineral Board be subsequently modified, cancelled or abrogated due to the existence of conflicting leases, operating agreements, private claims or other future obligations or conditions which may affect all or any portion of the leased Tract, it shall not relieve the Lessee of the obligation to pay any bonus due thereon to the Louisiana State Mineral Board, nor shall the Louisiana State Mineral Board be obligated to refund any consideration paid by the Lessor prior to such modification, cancellation, or abrogation, including, but not limited to, bonuses, rentals and royalties.

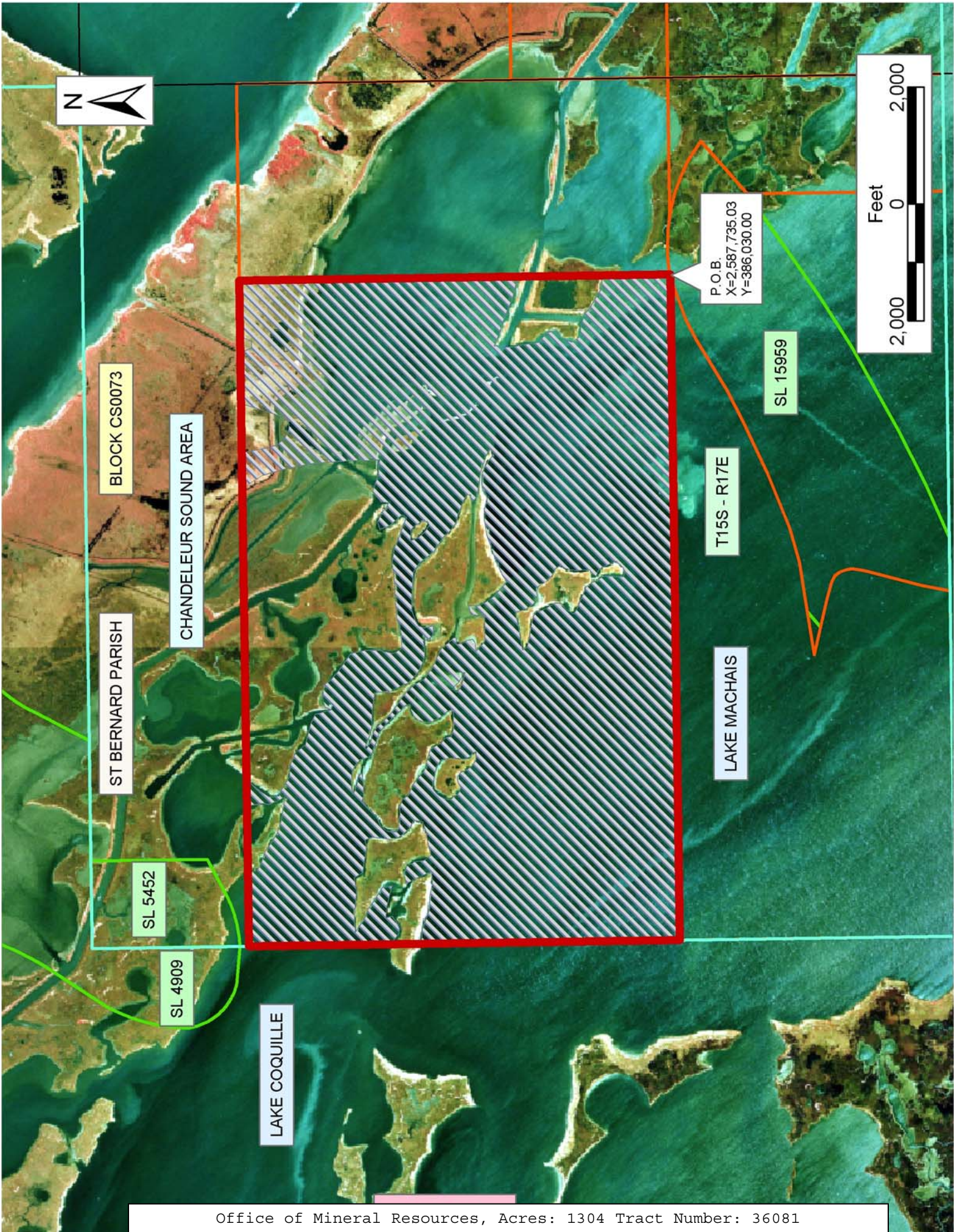
NOTE: The State of Louisiana does hereby reserve, and this lease shall be subject to, the imprescriptible right of surface use in the nature of a servitude in favor of the Department of Natural Resources, including its Offices and Commissions, for the sole purpose of implementing, constructing, servicing and maintaining approved coastal zone management and/or restoration projects. Utilization of any and all rights derived under this lease by the mineral lessee, its agents, successors or assigns, shall not interfere with nor hinder the reasonable surface use by the Department of Natural Resources, its Offices or Commissions, as herein above reserved.

NOTE: The Department of Wildlife and Fisheries has designated certain areas in the coastal waters of the State of Louisiana as Oyster Seed Bed Areas. The exact location of those Seed Bed Areas must be obtained from the Department of Wildlife and Fisheries and any work done under a mineral lease from the State of Louisiana may necessarily be conducted in conformity with the rules and regulations promulgated by the said Department of Wildlife and Fisheries for Oyster Seed Bed Areas.

Applicant: Energy Partners, Inc.

Bidder	Cash Payment	Price/Acre	Rental	Oil	Gas	Other





BLOCK CS0073

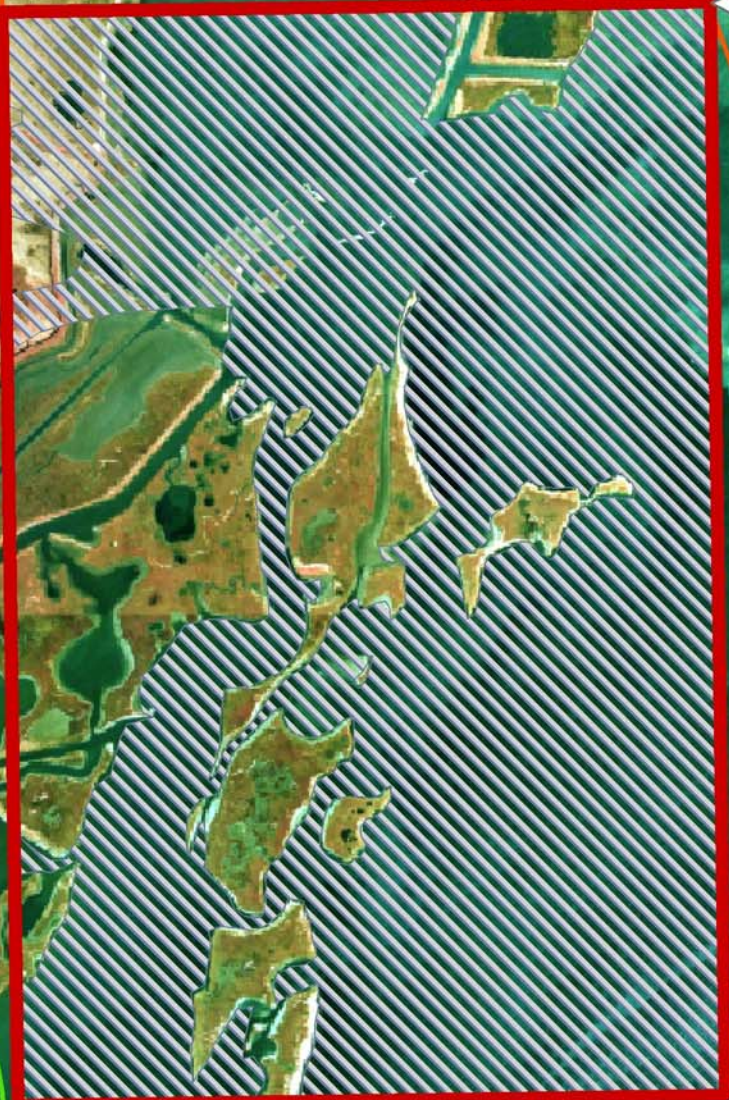
CHANDELEUR SOUND AREA

ST BERNARD PARISH

SL 5452

SL 4909

LAKE COQUILLE



T15S - R17E

LAKE MACHAIS

SL 15959

P.O.B.  
X=2,587,735.03  
Y=386,030.00





**TRACT 36082 - Portion of Block 73, Chandeleur Sound Area, St. Bernard Parish, Louisiana**

All of the lands now or formerly constituting the beds and bottoms of all water bodies of every nature and description the title of which vests in the State of Louisiana, together with all islands arising therein and other lands formed by accretion or by reliction, where allowed by law, excepting tax adjudicated lands, and not presently under mineral lease on February 11, 2004, situated in St. Bernard Parish, Louisiana, and more particularly described as follows: Beginning at a point within Block 73, Chandeleur Sound Area, said point located on the Northern boundary of State Lease No. 15959, as amended having Coordinates of X = 2,587,735.03 and Y = 386,030.00; thence North 7,370.00 feet to a point having Coordinates of X = 2,587,735.03 and Y = 393,400.00; thence East 3,364.97 feet to a point on the East boundary of said Block 73 having Coordinates of X = 2,591,100.00 and Y = 393,400.00; thence South 7370.00 feet along the East boundary of said Block 73 to a point having Coordinates of X = 2,591,100.00 and Y = 386,030.00; thence West 2,393.68 feet to a point on the Northern boundary of said State Lease No. 15959, having Coordinates of X = 2,588,706.32 and Y = 386,030.00; thence North 80 degrees 45 minutes 03 seconds West 187.46 feet along the Northern boundary of said State Lease No. 15959, to a point having Coordinates of X = 2,588,521.30 and Y = 386,060.13; thence North 87 degrees 36 minutes 34 seconds West 398.69 feet along the Northern boundary of said State Lease No. 15959, to a point having Coordinates of X = 2,588,122.96 and Y = 386,076.76; thence South 85 degrees 30 minutes 31 seconds West 298.30 feet along the Northern boundary of said State Lease No. 15959, to a point having Coordinates of X = 2,587,825.58 and Y = 386,053.40; thence South 75 degrees 30 minutes 36 seconds West 93.52 feet along the Northern boundary of said State Lease No. 15959, to the point of beginning, containing approximately **520 acres**, all as more particularly outlined on a plat on file in the Office of Mineral Resources, Department of Natural Resources. All bearings, distances and coordinates are based on Louisiana Coordinate System of 1927, (North or South Zone), where applicable.

NOTE: The above description of the Tract nominated for lease has been provided and corrected, where required, exclusively by the nomination party. Any mineral lease selected from this Tract and awarded by the Louisiana State Mineral Board shall be without warranty of any kind, either express, implied, or statutory, including, but not limited to, the implied warranties of merchantability and fitness for a particular purpose. Should the mineral lease awarded by the Louisiana State Mineral Board be subsequently modified, cancelled or abrogated due to the existence of conflicting leases, operating agreements, private claims or other future obligations or conditions which may affect all or any portion of the leased Tract, it shall not relieve the Lessee of the obligation to pay any bonus due thereon to the Louisiana State Mineral Board, nor shall the Louisiana State Mineral Board be obligated to refund any consideration paid by the Lessor prior to such modification, cancellation, or abrogation, including, but not limited to, bonuses, rentals and royalties.

NOTE: The State of Louisiana does hereby reserve, and this lease shall be subject to, the imprescriptible right of surface use in the nature of a servitude in favor of the Department of Natural Resources, including its Offices and Commissions, for the sole purpose of implementing, constructing, servicing and maintaining approved coastal zone management and/or restoration projects. Utilization of any and all rights derived under this lease by the mineral lessee, its agents, successors or assigns, shall not interfere with nor hinder the reasonable surface use by the Department of Natural Resources, its Offices or Commissions, as herein above reserved.

NOTE: The Department of Wildlife and Fisheries has designated certain areas in the coastal waters of the State of Louisiana as Oyster Seed Bed Areas. The exact location of those Seed Bed Areas must be obtained from the Department of Wildlife and Fisheries and any work done under a mineral lease from the State of Louisiana may necessarily be conducted in conformity with the rules and regulations promulgated by the said Department of Wildlife and Fisheries for Oyster Seed Bed Areas.

Applicant: Energy Partners, Inc.

Bidder	Cash Payment	Price/Acre	Rental	Oil	Gas	Other





BLOCK CS0072

ST BERNARD PARISH

CHANDELEUR SOUND AREA

T15S - R17E

P.O.B.  
X=2,587,735.03  
Y=386,030.00

SL 15959

BLOCK CS0073

LAKE MACHAIS



**TRACT 36083 - Portion of Block 72, Chandeleur Sound Area, St. Bernard Parish, Louisiana**

All of the lands now or formerly constituting the beds and bottoms of all water bodies of every nature and description the title of which vests in the State of Louisiana, together with all islands arising therein and other lands formed by accretion or by reliction, where allowed by law, excepting tax adjudicated lands, and not presently under mineral lease on February 11, 2004, situated in St. Bernard Parish, Louisiana, and more particularly described as follows: Beginning at a point within Block 72, Chandeleur Sound Area, said point being the Southwest corner of State Lease No. 16158 having Coordinates of X = 2,598,475.00 and Y = 388,705.00; thence West 2,500.00 feet to a point having Coordinates of X = 2,595,975.00 and Y = 388,705.00; thence North 4,695.00 feet to a point having Coordinates of X = 2,595,975.00 and Y = 393,400.00; thence East 2,500.00 feet to a point on the West boundary of said State Lease No. 16158 having Coordinates of X = 2,598,475.00 and Y = 393,400.00; thence South 4,695.00 feet along the West boundary of said State Lease No. 16158 to the point of beginning, containing approximately **269.46 acres**, all as more particularly outlined on a plat on file in the Office of Mineral Resources, Department of Natural Resources. All bearings, distances and coordinates are based on Louisiana Coordinate System of 1927, (North or South Zone), where applicable.

NOTE: The above description of the Tract nominated for lease has been provided and corrected, where required, exclusively by the nomination party. Any mineral lease selected from this Tract and awarded by the Louisiana State Mineral Board shall be without warranty of any kind, either express, implied, or statutory, including, but not limited to, the implied warranties of merchantability and fitness for a particular purpose. Should the mineral lease awarded by the Louisiana State Mineral Board be subsequently modified, cancelled or abrogated due to the existence of conflicting leases, operating agreements, private claims or other future obligations or conditions which may affect all or any portion of the leased Tract, it shall not relieve the Lessee of the obligation to pay any bonus due thereon to the Louisiana State Mineral Board, nor shall the Louisiana State Mineral Board be obligated to refund any consideration paid by the Lessor prior to such modification, cancellation, or abrogation, including, but not limited to, bonuses, rentals and royalties.

NOTE: The State of Louisiana does hereby reserve, and this lease shall be subject to, the imprescriptible right of surface use in the nature of a servitude in favor of the Department of Natural Resources, including its Offices and Commissions, for the sole purpose of implementing, constructing, servicing and maintaining approved coastal zone management and/or restoration projects. Utilization of any and all rights derived under this lease by the mineral lessee, its agents, successors or assigns, shall not interfere with nor hinder the reasonable surface use by the Department of Natural Resources, its Offices or Commissions, as herein above reserved.

NOTE: The Department of Wildlife and Fisheries has designated certain areas in the coastal waters of the State of Louisiana as Oyster Seed Bed Areas. The exact location of those Seed Bed Areas must be obtained from the Department of Wildlife and Fisheries and any work done under a mineral lease from the State of Louisiana may necessarily be conducted in conformity with the rules and regulations promulgated by the said Department of Wildlife and Fisheries for Oyster Seed Bed Areas.

Applicant: Energy Partners, Inc.

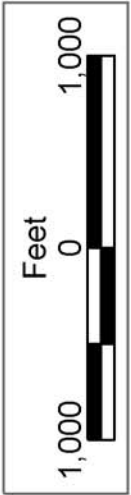
Bidder	Cash Payment	Price/Acre	Rental	Oil	Gas	Other





SL 16158

P.O.B.  
X=2,598,475.00  
Y=388,705.00



ST BERNARD PARISH

CHANDELEUR SOUND AREA

BLOCK CS0072

**TRACT 36084 - Portion of Block 71, Chandeleur Sound Area, St. Bernard Parish, Louisiana**

All of the lands now or formerly constituting the beds and bottoms of all water bodies of every nature and description the title of which vests in the State of Louisiana, together with all islands arising therein and other lands formed by accretion or by reliction, where allowed by law, excepting tax adjudicated lands, and not presently under mineral lease on February 11, 2004, situated in St. Bernard Parish, Louisiana, and more particularly described as follows: Beginning at a point on the West boundary of Block 71, Chandeleur Sound Area, having Coordinates of X = 2,605,850.00 and Y = 391,180.00; thence East 4,900.00 feet to the Southwest corner of State Lease No. 4147, as amended, having Coordinates of X = 2,610,750.00 and Y = 391,180.00; thence East 9,850.00 feet along the South boundary of said State Lease No. 4147 to its Southeast corner, said corner also being a point on the East boundary of said Block 71, having Coordinates of X = 2,620,600.00 and Y = 391,180.00; thence South 3,850.00 feet along the East boundary of said Block 71, to the Northeast corner of State Lease No. 17276, having Coordinates of X = 2,620,600.00 and Y = 387,330.00; thence South 73 degrees 42 minutes 54 seconds West 4,636.00 feet along the North boundary of said State Lease No. 17276 to its Northwest corner having Coordinates of X = 2,616,150.00 and Y = 386,030.00; thence West 10,300.00 feet to a point on the West boundary of said Block 71 having Coordinates of X = 2,605,850.00 and Y = 386,030.00; thence North 5,150.00 feet along the said West boundary of Block 71 to the point of beginning, containing approximately **1677.46 acres**, all as more particularly outlined on a plat on file in the Office of Mineral Resources, Department of Natural Resources. All bearings, distances and coordinates are based on Louisiana Coordinate System of 1927, (North or South Zone), where applicable.

NOTE: The above description of the Tract nominated for lease has been provided and corrected, where required, exclusively by the nomination party. Any mineral lease selected from this Tract and awarded by the Louisiana State Mineral Board shall be without warranty of any kind, either express, implied, or statutory, including, but not limited to, the implied warranties of merchantability and fitness for a particular purpose. Should the mineral lease awarded by the Louisiana State Mineral Board be subsequently modified, cancelled or abrogated due to the existence of conflicting leases, operating agreements, private claims or other future obligations or conditions which may affect all or any portion of the leased Tract, it shall not relieve the Lessee of the obligation to pay any bonus due thereon to the Louisiana State Mineral Board, nor shall the Louisiana State Mineral Board be obligated to refund any consideration paid by the Lessor prior to such modification, cancellation, or abrogation, including, but not limited to, bonuses, rentals and royalties.

NOTE: The State of Louisiana does hereby reserve, and this lease shall be subject to, the imprescriptible right of surface use in the nature of a servitude in favor of the Department of Natural Resources, including its

Offices and Commissions, for the sole purpose of implementing, constructing, servicing and maintaining approved coastal zone management and/or restoration projects. Utilization of any and all rights derived under this lease by the mineral lessee, its agents, successors or assigns, shall not interfere with nor hinder the reasonable surface use by the Department of Natural Resources, its Offices or Commissions, as herein above reserved.

NOTE: The Department of Wildlife and Fisheries has designated certain areas in the coastal waters of the State of Louisiana as Oyster Seed Bed Areas. The exact location of those Seed Bed Areas must be obtained from the Department of Wildlife and Fisheries and any work done under a mineral lease from the State of Louisiana may necessarily be conducted in conformity with the rules and regulations promulgated by the said Department of Wildlife and Fisheries for Oyster Seed Bed Areas.

Applicant: Energy Partners, Inc.

Bidder	Cash Payment	Price/Acre	Rental	Oil	Gas	Other



CHANDELEUR SOUND AREA

SL 4147

P.O.B.  
X=2,605,850.00  
Y=391,180.00

SL 16158

SL 17276

BLOCK CS0071



**TRACT 36085 - Portion of Block 72, Chandeleur Sound Area, St. Bernard Parish, Louisiana**

All of the lands now or formerly constituting the beds and bottoms of all water bodies of every nature and description the title of which vests in the State of Louisiana, together with all islands arising therein and other lands formed by accretion or by reliction, where allowed by law, excepting tax adjudicated lands, and not presently under mineral lease on February 11, 2004, situated in St. Bernard Parish, Louisiana, and more particularly described as follows: Beginning at a point within Block 72, Chandeleur Sound Area, said point also being the Southwest corner of State Lease No. 16158 having Coordinates of X = 2,598,475.00 and Y = 388,705.00; thence East 7,375.00 feet along the South boundary of said State Lease No. 16158 to its Southeast corner, said corner also being a point on the East boundary of said Block 72 having Coordinates of X = 2,605,850.00 and Y = 388,705.00; thence South 2,675.00 feet along the East boundary of said Block 72, to a point having Coordinates of X = 2,605,850.00 and Y = 386,030.00; thence West 14,750.00 feet to a point on the West boundary of said Block 72 having Coordinates of X = 2,591,100.00 and Y = 386,030.00; thence North 2,675.00 feet along the West boundary of said Block 72, to a point having Coordinates of X = 2,591,100.00 and Y = 388,705.00; thence East 7,375.00 feet to the point of beginning, containing approximately **439 acres**, all as more particularly outlined on a plat on file in the Office of Mineral Resources, Department of Natural Resources. All bearings, distances and coordinates are based on Louisiana Coordinate System of 1927, (North or South Zone), where applicable.

NOTE: The above description of the Tract nominated for lease has been provided and corrected, where required, exclusively by the nomination party. Any mineral lease selected from this Tract and awarded by the Louisiana State Mineral Board shall be without warranty of any kind, either express, implied, or statutory, including, but not limited to, the implied warranties of merchantability and fitness for a particular purpose. Should the mineral lease awarded by the Louisiana State Mineral Board be subsequently modified, cancelled or abrogated due to the existence of conflicting leases, operating agreements, private claims or other future obligations or conditions which may affect all or any portion of the leased Tract, it shall not relieve the Lessee of the obligation to pay any bonus due thereon to the Louisiana State Mineral Board, nor shall the Louisiana State Mineral Board be obligated to refund any consideration paid by the Lessor prior to such modification, cancellation, or abrogation, including, but not limited to, bonuses, rentals and royalties.

NOTE: The State of Louisiana does hereby reserve, and this lease shall be subject to, the imprescriptible right of surface use in the nature of a servitude in favor of the Department of Natural Resources, including its Offices and Commissions, for the sole purpose of implementing, constructing, servicing and maintaining approved coastal zone management and/or restoration projects. Utilization of any and all rights derived under this lease by the mineral lessee, its agents, successors or assigns,

shall not interfere with nor hinder the reasonable surface use by the Department of Natural Resources, its Offices or Commissions, as herein above reserved.

NOTE: The Department of Wildlife and Fisheries has designated certain areas in the coastal waters of the State of Louisiana as Oyster Seed Bed Areas. The exact location of those Seed Bed Areas must be obtained from the Department of Wildlife and Fisheries and any work done under a mineral lease from the State of Louisiana may necessarily be conducted in conformity with the rules and regulations promulgated by the said Department of Wildlife and Fisheries for Oyster Seed Bed Areas.

Applicant: Energy Partners, Inc.

Bidder	Cash Payment	Price/Acre	Rental	Oil	Gas	Other





CHANDELEUR SOUND AREA

SL 16158

BLOCK CS0072

P.O.B.  
X=2,598,475.00  
Y=388,705.00

T15S - R17E



T15S - R18E

ST BERNARD PARISH

MAIN PASS AREA, REVISED

