

TRACT 36124 - St. Mary Parish, Louisiana

A portion of all lands located above the mean high water mark, together with lands now or formerly constituting the beds and bottoms of any water body of whatever description or nature belonging to the State of Louisiana which is now located within the boundaries of the Atchafalaya Delta Wildlife Management Area and not presently under mineral lease by the State of Louisiana on February 11, 2004, and more particularly located as follows: Beginning at a point on the Western boundary of the Atchafalaya Delta Wildlife Management Area, having Coordinates of X = 1,930,619.00 and Y = 306,000.00; thence East 11,381.00 feet to the Northwest corner of State Lease No. 17227, said corner also being the Southwest corner of State Lease No. 17228, having Coordinates of X = 1,942,000.00 and Y = 306,000.00; thence South 1,500.00 feet along the West line of said State Lease No. 17227 to its Southwest corner having Coordinates of X = 1,942,000.00 and Y = 304,500.00; thence South 9,020.00 feet to a point having Coordinates of X = 1,942,000.00 and Y = 295,480.00; thence West approximately 4,659 feet to a point on the boundary of State Lease No. 340, as amended; thence Northerly approximately 2,102 feet along the boundary of said State Lease No. 340, to its Northeast corner; thence Westerly approximately 6,722 feet along the boundary of said State Lease No. 340, to a point of intersection with the Western boundary of the said Atchafalaya Delta Wildlife Management Area having a Coordinate of X = 1,930,619.00; thence North approximately 8,403 feet along the Western boundary of the said Atchafalaya Delta Wildlife Management Area to the point of beginning, **LESS AND EXCEPT** that portion if any, of State Lease No. 340, as amended, that may fall within the above described tract, containing approximately **2,423 acres**, all as more particularly outlined on a plat on file in the Office of Mineral Resources, Department of Natural Resources. All bearings, distances and coordinates are based on Louisiana Coordinate System of 1927, (South Zone).

NOTE: The above description of the Tract nominated for lease has been provided and corrected, where required, exclusively by the nomination party. Any mineral lease selected from this Tract and awarded by the Louisiana State Mineral Board shall be without warranty of any kind, either express, implied, or statutory, including, but not limited to, the implied warranties of merchantability and fitness for a particular purpose. Should the mineral lease awarded by the Louisiana State Mineral Board be subsequently modified, cancelled or abrogated due to the existence of conflicting leases, operating agreements, private claims or other future obligations or conditions which may affect all or any portion of the leased Tract, it shall not relieve the Lessee of the obligation to pay any bonus due thereon to the Louisiana State Mineral Board, nor shall the Louisiana State Mineral Board be obligated to refund any consideration paid by the Lessor prior to such modification, cancellation, or abrogation, including, but not limited to, bonuses, rentals and royalties.

NOTE: The above described tract may be in the vicinity of existing shell reefs where drilling and dredging operations must be conducted in strict

conformity with the regulations adopted by the Louisiana Department of Wildlife and Fisheries and/or the U.S. Corps of Engineers, U.S. Army.

NOTE: The mineral lease is located in the Atchafalaya Delta WMA under the jurisdiction of the Louisiana Department of Wildlife and Fisheries which has promulgated rules and regulations for the protection of game and wildlife on the aforesaid Tract and, therefore, shall be subject to said rules and regulations, a copy of which shall be attached to the mineral lease. In addition to the specific rules and regulations applicable, the following shall apply regarding operations under this mineral lease:

1. No activities will be allowed without written authorization of the Louisiana Department of Wildlife and Fisheries.
2. Proposed projects will be evaluated on a case by case basis. Modifications to proposed project features including, but not limited to, access routes, spoil placement, well sites, flow lines and other appurtenant structures may be required by the Department of Wildlife and Fisheries.
3. Compliance with the Atchafalaya Delta WMA regulations will be required unless otherwise specified by the Department of Wildlife and Fisheries.
4. Compensatory mitigation will be required to offset unavoidable wetland impacts.
5. Removal of all structures, facilities and equipment will be required within 120 days of abandonment unless otherwise agreed to in writing Department of Wildlife and Fisheries.
6. No activities will be allowed during the hunting season unless authorized by the Department.
7. Prior to submitting applications for wetland permits to Federal and State permitting agencies the lease holder shall coordinate project details with the Department of Wildlife and Fisheries. Contact person for the Department will be Mike Windham at (504) 568-5886.

NOTE: The Department will require a minimum bonus of \$350.00 per acre and a minimum royalty of 25%

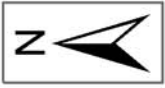
NOTE: The State of Louisiana does hereby reserve, and this lease shall be subject to, the imprescriptible right of surface use in the nature of a servitude in favor of the Department of Natural Resources, including its Offices and Commissions, for the sole purpose of implementing, constructing, servicing and maintaining approved coastal zone management and/or restoration projects. Utilization of any and all rights derived under this lease by the mineral lessee, its agents, successors or assigns, shall not interfere with nor hinder the reasonable surface use by the Department of Natural Resources, its Offices or Commissions, as herein above reserved.

NOTE: The Department of Wildlife and Fisheries has designated certain areas in the coastal waters of the State of Louisiana as Oyster Seed Bed Areas. The exact location of those Seed Bed Areas must be obtained from the Department of Wildlife and Fisheries and any work done under a mineral

lease from the State of Louisiana may necessarily be conducted in conformity with the rules and regulations promulgated by the said Department of Wildlife and Fisheries for Oyster Seed Bed Areas.

Applicant: Buckdeaux Partners

Bidder	Cash Payment	Price/Acre	Rental	Oil	Gas	Other



SL 17228

SL 17227

ATCHAFALAYA
DELTA WMA

ST MARY PARISH

P.O.B.
X=1,930,619.00
Y=306,000.00

EUGENE ISLAND AREA, REVISED

BLOCK E10400

SL 340



TRACT 36125 - St. Mary Parish, Louisiana

A portion of all lands located above the mean high water mark, together with lands now or formerly constituting the beds and bottoms of any water body of whatever description or nature belonging to the State of Louisiana which is now located within the boundaries of the Atchafalaya Delta Wildlife Management Area and not presently under mineral lease by the State of Louisiana on February 11, 2004, and more particularly located as follows: Beginning at a point having Coordinates of X = 1,955,550.00 and Y = 295,480.00; thence West 13,550.00 feet to a point having Coordinates of X = 1,942,000.00 and Y = 295,480.00; thence North 9,020.00 feet to the Southwest corner of State Lease No. 17227 having Coordinates of X = 1,942,000.00 and Y = 304,500.00; thence East 8,999.00 feet along the South line of said State Lease No. 17227 to its Southeast corner, said corner also being a point on the West line of State Lease No. 16966, having Coordinates of X = 1,950,999.00 and Y = 304,500.00; thence South 2,942.00 feet along the West line of said State Lease No. 16966 to its Southwest corner having Coordinates of X = 1,950,999.00 and Y = 301,558.00; thence East 4,551.00 feet along the South line of said State Lease No. 16966 to a point having Coordinates of X = 1,955,550.00 and Y = 301,558.00; thence South 6,078.00 feet to the point of beginning, containing approximately **2,498.44 acres**, all as more particularly outlined on a plat on file in the Office of Mineral Resources, Department of Natural Resources. All bearings, distances and coordinates are based on Louisiana Coordinate System of 1927, (South Zone).

NOTE: The above description of the Tract nominated for lease has been provided and corrected, where required, exclusively by the nomination party. Any mineral lease selected from this Tract and awarded by the Louisiana State Mineral Board shall be without warranty of any kind, either express, implied, or statutory, including, but not limited to, the implied warranties of merchantability and fitness for a particular purpose. Should the mineral lease awarded by the Louisiana State Mineral Board be subsequently modified, cancelled or abrogated due to the existence of conflicting leases, operating agreements, private claims or other future obligations or conditions which may affect all or any portion of the leased Tract, it shall not relieve the Lessee of the obligation to pay any bonus due thereon to the Louisiana State Mineral Board, nor shall the Louisiana State Mineral Board be obligated to refund any consideration paid by the Lessor prior to such modification, cancellation, or abrogation, including, but not limited to, bonuses, rentals and royalties.

NOTE: The above described tract may be in the vicinity of existing shell reefs where drilling and dredging operations must be conducted in strict conformity with the regulations adopted by the Louisiana Department of Wildlife and Fisheries and/or the U.S. Corps of Engineers, U.S. Army.

NOTE: The mineral lease is located in the Atchafalaya Delta WMA under the jurisdiction of the Louisiana Department of Wildlife and Fisheries which has promulgated rules and regulations for the protection of game and

wildlife on the aforesaid Tract and, therefore, shall be subject to said rules and regulations, a copy of which shall be attached to the mineral lease. In addition to the specific rules and regulations applicable, the following shall apply regarding operations under this mineral lease:

1. No activities will be allowed without written authorization of the Louisiana Department of Wildlife and Fisheries.
2. Proposed projects will be evaluated on a case by case basis. Modifications to proposed project features including, but not limited to, access routes, spoil placement, well sites, flow lines and other appurtenant structures may be required by the Department of Wildlife and Fisheries.
3. Compliance with the Atchafalaya Delta WMA regulations will be required unless otherwise specified by the Department of Wildlife and Fisheries.
4. Compensatory mitigation will be required to offset unavoidable wetland impacts.
5. Removal of all structures, facilities and equipment will be required within 120 days of abandonment unless otherwise agreed to in writing Department of Wildlife and Fisheries.
6. No activities will be allowed during the hunting season unless authorized by the Department.
7. Prior to submitting applications for wetland permits to Federal and State permitting agencies the lease holder shall coordinate project details with the Department of Wildlife and Fisheries. Contact person for the Department will be Mike Windham at (504) 568-5886.

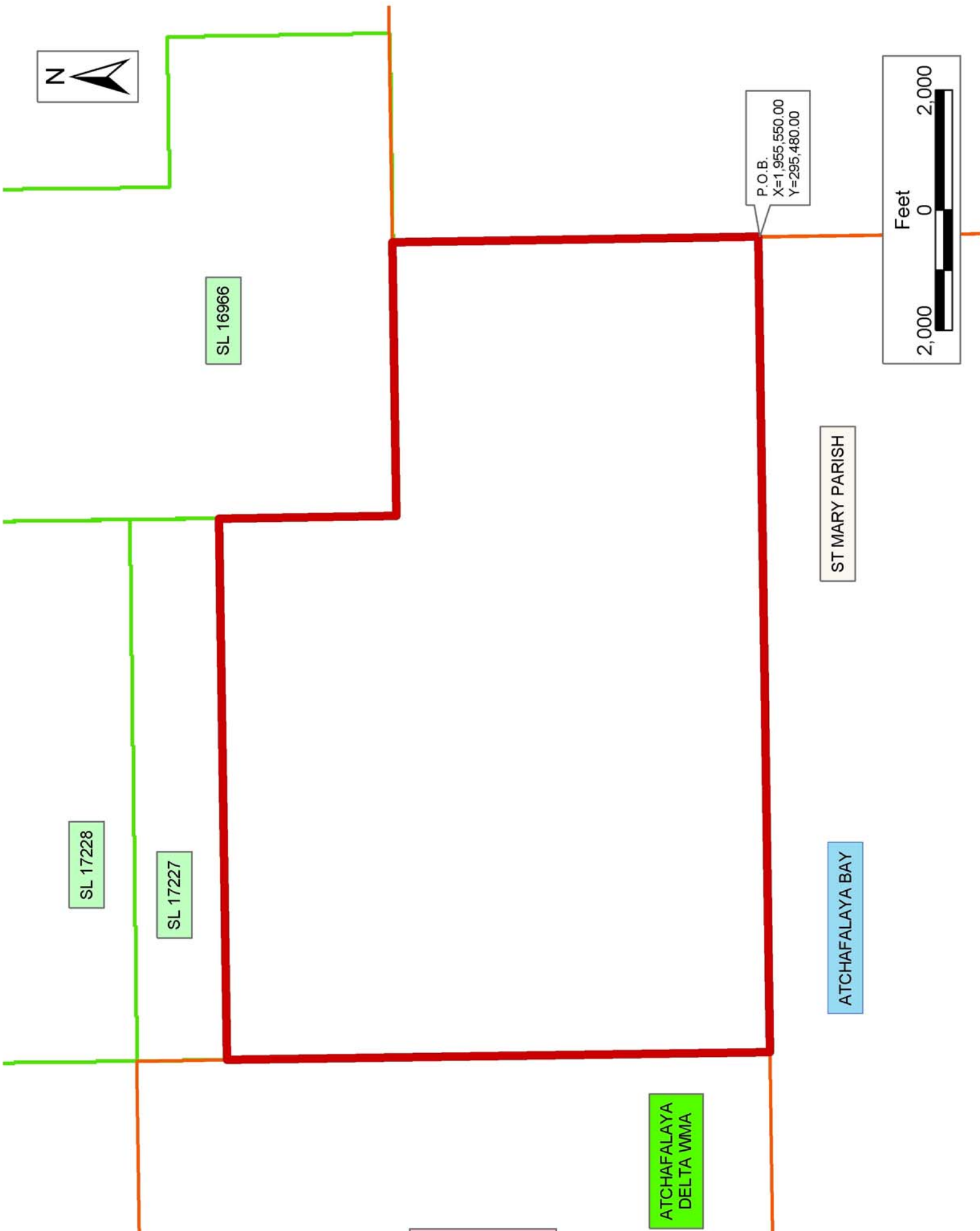
NOTE: The Department will require a minimum bonus of \$350.00 per acre and a minimum royalty of 25%

NOTE: The State of Louisiana does hereby reserve, and this lease shall be subject to, the imprescriptible right of surface use in the nature of a servitude in favor of the Department of Natural Resources, including its Offices and Commissions, for the sole purpose of implementing, constructing, servicing and maintaining approved coastal zone management and/or restoration projects. Utilization of any and all rights derived under this lease by the mineral lessee, its agents, successors or assigns, shall not interfere with nor hinder the reasonable surface use by the Department of Natural Resources, its Offices or Commissions, as herein above reserved.

NOTE: The Department of Wildlife and Fisheries has designated certain areas in the coastal waters of the State of Louisiana as Oyster Seed Bed Areas. The exact location of those Seed Bed Areas must be obtained from the Department of Wildlife and Fisheries and any work done under a mineral lease from the State of Louisiana may necessarily be conducted in conformity with the rules and regulations promulgated by the said Department of Wildlife and Fisheries for Oyster Seed Bed Areas.

Applicant: Buckdeaux Partners

Bidder	Cash Payment	Price/Acre	Rental	Oil	Gas	Other



SL 16966

SL 17228

SL 17227

ATCHAFALAYA
DELTA WMA

P.O.B.
X=1,955,550.00
Y=295,480.00

ST MARY PARISH

ATCHAFALAYA BAY



TRACT 36126 - St. Mary Parish, Louisiana

A portion of all lands located above the mean high water mark, together with lands now or formerly constituting the beds and bottoms of any water body of whatever description or nature belonging to the State of Louisiana which is now located within the boundaries of the Atchafalaya Delta Wildlife Management Area and not presently under mineral lease by the State of Louisiana on February 11, 2004, and more particularly located as follows: Beginning at a point having Coordinates of X = 1,955,550.00 and Y = 287,768.81; thence North 13,789.19 feet to a point on the South line of State Lease No. 16966 having Coordinates of X = 1,955,550.00 and Y = 301,558.00; thence East 3,449.00 feet along the South line of said State Lease No. 16966 to its Southeast corner having Coordinates of X = 1,958,999.00 and Y = 301,558.00; thence East approximately 6,705 feet to a point on the boundary of State Lease No. 340, as amended; thence Southerly approximately 3,519 feet along the boundary of said State Lease No. 340, to its Southwest corner; thence West approximately 3,047 feet to a point having Coordinates of X = 1,962,616.08 and Y = 298,039.16; thence South 6,728.46 feet to the Northwest corner of Operating Agreement No. 259 having Coordinates of X = 1,962,616.08 and Y = 291,310.70; thence South 00 degrees 02 minutes 05 seconds West 3,541.89 feet along the West line of said Operating Agreement No. 259 to its Southwest corner having Coordinates of X = 1,962,613.93 and Y = 287,768.81; thence West 7,063.93 feet to the point of beginning, **LESS AND EXCEPT** that portion if any, of State Lease No. 340, as amended, that may lie within the above described tract, containing approximately **2,485 acres**, all as more particularly outlined on a plat on file in the Office of Mineral Resources, Department of Natural Resources. All bearings, distances and coordinates are based on Louisiana Coordinate System of 1927, (South Zone).

NOTE: The above description of the Tract nominated for lease has been provided and corrected, where required, exclusively by the nomination party. Any mineral lease selected from this Tract and awarded by the Louisiana State Mineral Board shall be without warranty of any kind, either express, implied, or statutory, including, but not limited to, the implied warranties of merchantability and fitness for a particular purpose. Should the mineral lease awarded by the Louisiana State Mineral Board be subsequently modified, cancelled or abrogated due to the existence of conflicting leases, operating agreements, private claims or other future obligations or conditions which may affect all or any portion of the leased Tract, it shall not relieve the Lessee of the obligation to pay any bonus due thereon to the Louisiana State Mineral Board, nor shall the Louisiana State Mineral Board be obligated to refund any consideration paid by the Lessor prior to such modification, cancellation, or abrogation, including, but not limited to, bonuses, rentals and royalties.

NOTE: The above described tract may be in the vicinity of existing shell reefs where drilling and dredging operations must be conducted in strict conformity with the regulations adopted by the Louisiana Department of Wildlife and Fisheries and/or the U.S. Corps of Engineers, U.S. Army.

NOTE: The mineral lease is located in the Atchafalaya Delta WMA under the jurisdiction of the Louisiana Department of Wildlife and Fisheries which has promulgated rules and regulations for the protection of game and wildlife on the aforesaid Tract and, therefore, shall be subject to said rules and regulations, a copy of which shall be attached to the mineral lease. In addition to the specific rules and regulations applicable, the following shall apply regarding operations under this mineral lease:

1. No activities will be allowed without written authorization of the Louisiana Department of Wildlife and Fisheries.
2. Proposed projects will be evaluated on a case by case basis. Modifications to proposed project features including, but not limited to, access routes, spoil placement, well sites, flow lines and other appurtenant structures may be required by the Department of Wildlife and Fisheries.
3. Compliance with the Atchafalaya Delta WMA regulations will be required unless otherwise specified by the Department of Wildlife and Fisheries.
4. Compensatory mitigation will be required to offset unavoidable wetland impacts.
5. Removal of all structures, facilities and equipment will be required within 120 days of abandonment unless otherwise agreed to in writing Department of Wildlife and Fisheries.
6. No activities will be allowed during the hunting season unless authorized by the Department.
7. Prior to submitting applications for wetland permits to Federal and State permitting agencies the lease holder shall coordinate project details with the Department of Wildlife and Fisheries. Contact person for the Department will be Mike Windham at (504) 568-5886.

NOTE: The Department will require a minimum bonus of \$350.00 per acre and a minimum royalty of 25%

NOTE: The State of Louisiana does hereby reserve, and this lease shall be subject to, the imprescriptible right of surface use in the nature of a servitude in favor of the Department of Natural Resources, including its Offices and Commissions, for the sole purpose of implementing, constructing, servicing and maintaining approved coastal zone management and/or restoration projects. Utilization of any and all rights derived under this lease by the mineral lessee, its agents, successors or assigns, shall not interfere with nor hinder the reasonable surface use by the Department of Natural Resources, its Offices or Commissions, as herein above reserved.

NOTE: The Department of Wildlife and Fisheries has designated certain areas in the coastal waters of the State of Louisiana as Oyster Seed Bed Areas. The exact location of those Seed Bed Areas must be obtained from the Department of Wildlife and Fisheries and any work done under a mineral lease from the State of Louisiana may necessarily be conducted in

conformity with the rules and regulations promulgated by the said Department of Wildlife and Fisheries for Oyster Seed Bed Areas.

Applicant: Islander Operating Company

Bidder	Cash Payment	Price/Acre	Rental	Oil	Gas	Other



ATCHAFALAYA
DELTA WMA

SL 340

AO 0259

SL 16966

ST MARY PARISH

ATCHAFALAYA BAY

P.O.B.
X=1,955,550.00
Y=287,768.81



TRACT 36127 - St. Mary Parish, Louisiana

A portion of all lands located above the mean high water mark, together with lands now or formerly constituting the beds and bottoms of any water body of whatever description or nature belonging to the State of Louisiana which is now located within the boundaries of the Atchafalaya Delta Wildlife Management Area and not presently under mineral lease by the State of Louisiana on February 11, 2004, and more particularly located as follows: Beginning at a point having Coordinates of X = 1,974,550.00 and Y = 287,766.39; thence West 7,936.07 feet to the Southeast corner of Operating Agreement No. 259 having Coordinates of X = 1,966,613.93 and Y = 287,766.39; thence North 00 degrees 02 minutes 05 seconds East 3,541.89 feet along the East line of said Operating Agreement No. 259 to its Northeast corner having Coordinates of X = 1,966,616.08 and Y = 291,308.28; thence North 89 degrees 57 minutes 55 seconds West 4,000.00 feet along the North line of said Operating Agreement No. 259 to its Northwest corner having Coordinates of X = 1,962,616.08 and Y = 291,310.70; thence North 6,728.46 feet to a point having Coordinates of X = 1,962,616.08 and Y = 298,039.16; thence East approximately 3,047 feet to the Southwest corner of State Lease No. 340, as amended; thence Easterly approximately 8,887 feet along the boundary of said State Lease No. 340, to the intersection of a North South line having a Coordinate of X = 1,974,550.00; thence South approximately 10,336 feet to the point of beginning, **LESS AND EXCEPT** that portion if any, of State Lease No. 340, as amended, that may fall within the above described tract, containing approximately **2,496 acres**, all as more particularly outlined on a plat on file in the Office of Mineral Resources, Department of Natural Resources. All bearings, distances and coordinates are based on Louisiana Coordinate System of 1927, (South Zone).

NOTE: The above description of the Tract nominated for lease has been provided and corrected, where required, exclusively by the nomination party. Any mineral lease selected from this Tract and awarded by the Louisiana State Mineral Board shall be without warranty of any kind, either express, implied, or statutory, including, but not limited to, the implied warranties of merchantability and fitness for a particular purpose. Should the mineral lease awarded by the Louisiana State Mineral Board be subsequently modified, cancelled or abrogated due to the existence of conflicting leases, operating agreements, private claims or other future obligations or conditions which may affect all or any portion of the leased Tract, it shall not relieve the Lessee of the obligation to pay any bonus due thereon to the Louisiana State Mineral Board, nor shall the Louisiana State Mineral Board be obligated to refund any consideration paid by the Lessor prior to such modification, cancellation, or abrogation, including, but not limited to, bonuses, rentals and royalties.

NOTE: The mineral lease is located in the Atchafalaya Delta WMA under the jurisdiction of the Louisiana Department of Wildlife and Fisheries which has promulgated rules and regulations for the protection of game and wildlife on the aforesaid Tract and, therefore, shall be subject to said

rules and regulations, a copy of which shall be attached to the mineral lease. In addition to the specific rules and regulations applicable, the following shall apply regarding operations under this mineral lease:

1. No activities will be allowed without written authorization of the Louisiana Department of Wildlife and Fisheries.
2. Proposed projects will be evaluated on a case by case basis. Modifications to proposed project features including, but not limited to, access routes, spoil placement, well sites, flow lines and other appurtenant structures may be required by the Department of Wildlife and Fisheries.
3. Compliance with the Atchafalaya Delta WMA regulations will be required unless otherwise specified by the Department of Wildlife and Fisheries.
4. Compensatory mitigation will be required to offset unavoidable wetland impacts.
5. Removal of all structures, facilities and equipment will be required within 120 days of abandonment unless otherwise agreed to in writing Department of Wildlife and Fisheries.
6. No activities will be allowed during the hunting season unless authorized by the Department.
7. Prior to submitting applications for wetland permits to Federal and State permitting agencies the lease holder shall coordinate project details with the Department of Wildlife and Fisheries. Contact person for the Department will be Mike Windham at (504) 568-5886.

NOTE: The Department will require a minimum bonus of \$350.00 per acre and a minimum royalty of 25%

NOTE: The State of Louisiana does hereby reserve, and this lease shall be subject to, the imprescriptible right of surface use in the nature of a servitude in favor of the Department of Natural Resources, including its Offices and Commissions, for the sole purpose of implementing, constructing, servicing and maintaining approved coastal zone management and/or restoration projects. Utilization of any and all rights derived under this lease by the mineral lessee, its agents, successors or assigns, shall not interfere with nor hinder the reasonable surface use by the Department of Natural Resources, its Offices or Commissions, as herein above reserved.

NOTE: The Department of Wildlife and Fisheries has designated certain areas in the coastal waters of the State of Louisiana as Oyster Seed Bed Areas. The exact location of those Seed Bed Areas must be obtained from the Department of Wildlife and Fisheries and any work done under a mineral lease from the State of Louisiana may necessarily be conducted in conformity with the rules and regulations promulgated by the said Department of Wildlife and Fisheries for Oyster Seed Bed Areas.

Applicant: Islander Operating Company

Bidder	Cash Payment	Price/Acre	Rental	Oil	Gas	Other



SL 340

ST MARY PARISH

ATCHAFALAYA BAY

P.O.B.
X=1,974,550.00
Y=287,766.39



ATCHAFALAYA
DELTA WMA

AO 0259

TRACT 36128 - St. Mary Parish, Louisiana

A portion of all lands located above the mean high water mark, together with lands now or formerly constituting the beds and bottoms of any water body of whatever description or nature belonging to the State of Louisiana which is now located within the boundaries of the Atchafalaya Delta Wildlife Management Area and not presently under mineral lease by the State of Louisiana on February 11, 2004, and more particularly located as follows: Beginning at a point having Coordinates of X = 1,955,550.00 and Y = 295,480.00; thence South 5,930.00 feet to a point having Coordinates of X = 1,955,550.00 and Y = 289,550.00; thence West approximately 18,209 feet to a point on the boundary of State Lease No. 340, as amended; thence North approximately 5,930 feet along the boundary of said State Lease No. 340, to the intersection of an East West line having a Coordinate of Y = 295,480.00; thence East approximately 18,209 feet to the point of beginning, **LESS AND EXCEPT** that portion if any, of State Lease No. 340, as amended, that may fall within the above described tract, containing approximately **2,479 acres**, all as more particularly outlined on a plat on file in the Office of Mineral Resources, Department of Natural Resources. All bearings, distances and coordinates are based on Louisiana Coordinate System of 1927, (South Zone).

NOTE: The above description of the Tract nominated for lease has been provided and corrected, where required, exclusively by the nomination party. Any mineral lease selected from this Tract and awarded by the Louisiana State Mineral Board shall be without warranty of any kind, either express, implied, or statutory, including, but not limited to, the implied warranties of merchantability and fitness for a particular purpose. Should the mineral lease awarded by the Louisiana State Mineral Board be subsequently modified, cancelled or abrogated due to the existence of conflicting leases, operating agreements, private claims or other future obligations or conditions which may affect all or any portion of the leased Tract, it shall not relieve the Lessee of the obligation to pay any bonus due thereon to the Louisiana State Mineral Board, nor shall the Louisiana State Mineral Board be obligated to refund any consideration paid by the Lessor prior to such modification, cancellation, or abrogation, including, but not limited to, bonuses, rentals and royalties.

NOTE: The above described tract may be in the vicinity of existing shell reefs where drilling and dredging operations must be conducted in strict conformity with the regulations adopted by the Louisiana Department of Wildlife and Fisheries and/or the U.S. Corps of Engineers, U.S. Army.

NOTE: The mineral lease is located in the Atchafalaya Delta WMA under the jurisdiction of the Louisiana Department of Wildlife and Fisheries which has promulgated rules and regulations for the protection of game and wildlife on the aforesaid Tract and, therefore, shall be subject to said rules and regulations, a copy of which shall be attached to the mineral lease. In addition to the specific rules and regulations applicable, the following shall apply regarding operations under this mineral lease:

1. No activities will be allowed without written authorization of the Louisiana Department of Wildlife and Fisheries.
2. Proposed projects will be evaluated on a case by case basis. Modifications to proposed project features including, but not limited to, access routes, spoil placement, well sites, flow lines and other appurtenant structures may be required by the Department of Wildlife and Fisheries.
3. Compliance with the Atchafalaya Delta WMA regulations will be required unless otherwise specified by the Department of Wildlife and Fisheries.
4. Compensatory mitigation will be required to offset unavoidable wetland impacts.
5. Removal of all structures, facilities and equipment will be required within 120 days of abandonment unless otherwise agreed to in writing Department of Wildlife and Fisheries.
6. No activities will be allowed during the hunting season unless authorized by the Department.
7. Prior to submitting applications for wetland permits to Federal and State permitting agencies the lease holder shall coordinate project details with the Department of Wildlife and Fisheries. Contact person for the Department will be Mike Windham at (504) 568-5886.

NOTE: The Department will require a minimum bonus of \$350.00 per acre and a minimum royalty of 25%

NOTE: The State of Louisiana does hereby reserve, and this lease shall be subject to, the imprescriptible right of surface use in the nature of a servitude in favor of the Department of Natural Resources, including its Offices and Commissions, for the sole purpose of implementing, constructing, servicing and maintaining approved coastal zone management and/or restoration projects. Utilization of any and all rights derived under this lease by the mineral lessee, its agents, successors or assigns, shall not interfere with nor hinder the reasonable surface use by the Department of Natural Resources, its Offices or Commissions, as herein above reserved.

NOTE: The Department of Wildlife and Fisheries has designated certain areas in the coastal waters of the State of Louisiana as Oyster Seed Bed Areas. The exact location of those Seed Bed Areas must be obtained from the Department of Wildlife and Fisheries and any work done under a mineral lease from the State of Louisiana may necessarily be conducted in conformity with the rules and regulations promulgated by the said Department of Wildlife and Fisheries for Oyster Seed Bed Areas.

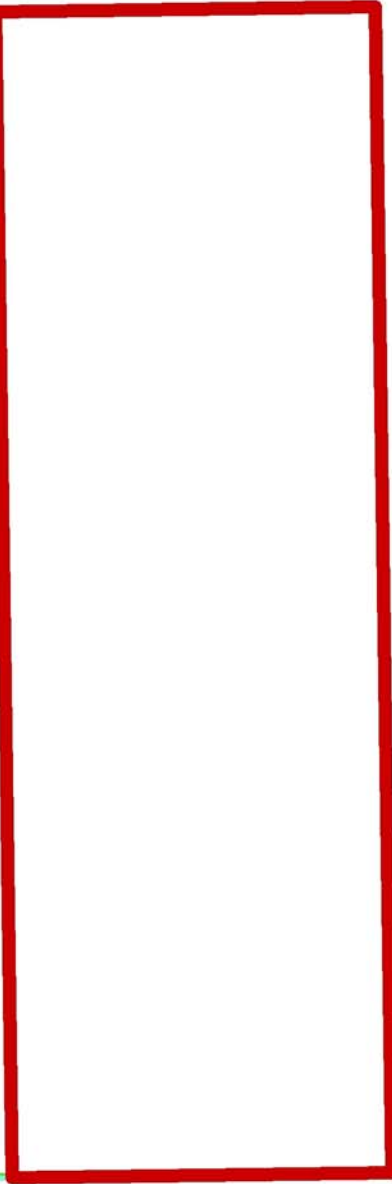
Applicant: Buckdeaux Partners

Bidder	Cash Payment	Price/Acre	Rental	Oil	Gas	Other



ST MARY PARISH

P.O.B.
X=1,955,550.00
Y=295,480.00



ATCHAFALAYA BAY

ATCHAFALAYA
DELTA WMA

SL 340

EUGENE ISLAND
AREA, REVISED

BLOCK E10400

