

**TRACT 36040 - Portion of Block 26, Breton Sound Area, Plaquemines Parish, Louisiana**

The beds and bottoms of all water bodies belonging to the State of Louisiana located in that portion of Block 26, Breton Sound Area, together with any present lands formed by accretion to the shoreline, located in Plaquemines Parish, Louisiana, and not presently under mineral lease on February 11, 2004, the geographical area of which is more fully described as follows: Beginning at a point being the Southwest corner of Block 26, Breton Sound Area having Coordinates of X = 2,723,850.00 and Y = 322,330.00; thence North 7,375.00 feet to a point on the West line of said Block 26 having Coordinates of X = 2,723,850.00 and Y = 329,705.00; thence East 14,750.00 feet to a point on the East line of said Block 26, having Coordinates of X = 2,738,600.00 and Y = 329,705.00; thence South 7,375.00 feet to the Southeast corner of said Block 26 having Coordinates of X = 2,738,600.00 and Y = 322,330.00; thence West 14,750.00 feet to the point of beginning, containing approximately **2,497.27 acres**, all as more particularly outlined on a plat on file in the Office of Mineral Resources, Department of Natural Resources. All bearings, distances and coordinates are based on Louisiana Coordinate System of 1927, (North or South Zone).

NOTE: The above description of the Tract nominated for lease has been provided and corrected, where required, exclusively by the nomination party. Any mineral lease selected from this Tract and awarded by the Louisiana State Mineral Board shall be without warranty of any kind, either express, implied, or statutory, including, but not limited to, the implied warranties of merchantability and fitness for a particular purpose. Should the mineral lease awarded by the Louisiana State Mineral Board be subsequently modified, cancelled or abrogated due to the existence of conflicting leases, operating agreements, private claims or other future obligations or conditions which may affect all or any portion of the leased Tract, it shall not relieve the Lessee of the obligation to pay any bonus due thereon to the Louisiana State Mineral Board, nor shall the Louisiana State Mineral Board be obligated to refund any consideration paid by the Lessor prior to such modification, cancellation, or abrogation, including, but not limited to, bonuses, rentals and royalties.

NOTE: The State of Louisiana does hereby reserve, and this lease shall be subject to, the imprescriptible right of surface use in the nature of a servitude in favor of the Department of Natural Resources, including its Offices and Commissions, for the sole purpose of implementing, constructing, servicing and maintaining approved coastal zone management and/or restoration projects. Utilization of any and all rights derived under this lease by the mineral lessee, its agents, successors or assigns, shall not interfere with nor hinder the reasonable surface use by the Department of Natural Resources, its Offices or Commissions, as herein above reserved.

Applicant: Stephen M. Jenkins, Inc.

Bidder	Cash Payment	Price/ Acre	Rental	Oil	Gas	Other



S.L.17063

BLOCK BS0025

LOUISIANA  
UNITED STATES

BLOCK BS0040



BLOCK BS0026

BLOCK BS0039

BRETON SOUND AREA

BLOCK BS0027

P.O.B.  
X=2,723,850.00  
Y=322,330.00

PLAQUEMINES PARISH

Coastline

BLOCK BS0038

**TRACT 36041 - Portion of Block 38, Breton Sound Area, Plaquemines Parish, Louisiana**

The beds and bottoms of all water bodies belonging to the State of Louisiana located in that portion of Block 38, Breton Sound Area, together with any present lands formed by accretion to the shoreline, located in Plaquemines Parish, Louisiana, and not presently under mineral lease on February 11, 2004, the geographical area of which is more fully described as follows: Beginning at a point being the Northeast corner of Block 38, Breton Sound Area having Coordinates of X = 2,723,850.00 and Y = 322,330.00; thence South 7,375.00 feet to a point on the East line of said Block 38 having Coordinates of X = 2,723,850.00 and Y = 314,955.00; thence West 14,750.00 feet to a point on the West line of said Block 38, having Coordinates of X = 2,709,100.00 and Y = 314,955.00; thence North 600.59 feet to a point on the Coastline derived from the June 16, 1975 Decree in the United States vs. Louisiana No. 9 Original having Coordinates of X = 2,709,100.00 and Y = 315,555.59; thence along said Coastline the following courses: North 71 degrees 03 minutes 12 seconds East 1,353.32 feet to a point having Coordinates of X = 2,710,380.00 and Y = 315,995.00; North 85 degrees 24 minutes 00 seconds East 1,396.50 feet to a point having Coordinates of X = 2,711,772.00 and Y = 316,107.00; North 65 degrees 54 minutes 27 seconds East 1,700.10 feet to a point having Coordinates of X = 2,713,324.00 and Y = 316,801.00; North 54 degrees 36 minutes 27 seconds East 1,605.73 feet to a point having Coordinates of X = 2,714,633.00 and Y = 317,731.00; North 42 degrees 24 minutes 57 seconds East 893.98 feet to a point having Coordinates of X = 2,715,236.00 and Y = 318,391.00; North 37 degrees 50 minutes 38 seconds East 2,894.82 feet to a point having Coordinates of X = 2,717,012.00 and Y = 320,677.00; North 31 degrees 07 minutes 15 seconds East 1,930.90 feet to a point on the North line of said Block 38, having Coordinates of X = 2,718,009.98 and Y = 322,330.00; thence East 5,840.02 feet to the point of beginning, containing approximately **1,550.45 acres**, all as more particularly outlined on a plat on file in the Office of Mineral Resources, Department of Natural Resources. All bearings, distances and coordinates are based on Louisiana Coordinate System of 1927, (North or South Zone).

NOTE: The above description of the Tract nominated for lease has been provided and corrected, where required, exclusively by the nomination party. Any mineral lease selected from this Tract and awarded by the Louisiana State Mineral Board shall be without warranty of any kind, either express, implied, or statutory, including, but not limited to, the implied warranties of merchantability and fitness for a particular purpose. Should the mineral lease awarded by the Louisiana State Mineral Board be subsequently modified, cancelled or abrogated due to the existence of conflicting leases, operating agreements, private claims or other future obligations or conditions which may affect all or any portion of the leased Tract, it shall not relieve the Lessee of the obligation to pay any bonus due thereon to the Louisiana State Mineral Board, nor shall the Louisiana State Mineral Board be obligated to refund any consideration

paid by the Lessor prior to such modification, cancellation, or abrogation, including, but not limited to, bonuses, rentals and royalties.

NOTE: The State of Louisiana does hereby reserve, and this lease shall be subject to, the imprescriptible right of surface use in the nature of a servitude in favor of the Department of Natural Resources, including its Offices and Commissions, for the sole purpose of implementing, constructing, servicing and maintaining approved coastal zone management and/or restoration projects. Utilization of any and all rights derived under this lease by the mineral lessee, its agents, successors or assigns, shall not interfere with nor hinder the reasonable surface use by the Department of Natural Resources, its Offices or Commissions, as herein above reserved.

Applicant: Stephen M. Jenkins, Inc.

Bidder	Cash Payment	Price/ Acre	Rental	Oil	Gas	Other



BLOCK BS0026

BLOCK BS0039

P.O.B.  
X=2,723,850.00  
Y=322,330.00



BLOCK BS0027

BLOCK BS0038

BRETON SOUND AREA

BLOCK BS0028

BLOCK BS0037

PLAQUEMINES PARISH

Cocastille

**TRACT 36042 - Portion of Block 39, Breton Sound Area, Plaquemines Parish, Louisiana**

The beds and bottoms of all water bodies belonging to the State of Louisiana located in that portion of Block 39, Breton Sound Area, together with any present lands formed by accretion to the shoreline, located in Plaquemines Parish, Louisiana, and not presently under mineral lease on February 11, 2004, the geographical area of which is more fully described as follows: Beginning at a point being the Northwest corner of Block 39, Breton Sound Area having Coordinates of X = 2,723,850.00 and Y = 322,330.00; thence East 14,750.00 feet to its Northeast corner having Coordinates of X = 2,738,600.00 and Y = 322,330.00; thence South 3,180.67 feet with the East line of the said Block 39, to a point on the Three Mile Decree Line derived from the June 16, 1975 Decree in the United States vs. Louisiana No. 9 Original having Coordinates of X = 2,738,600.00 and Y = 319,149.36; thence along said Decree Line the following courses: On a non tangent arc to the right with a radius of 18,240.60 feet and a chord bearing South 51 degrees 01 minute 59 seconds West 717.68 feet to a point having Coordinates of X = 2,738,042.00 and Y = 318,698.00; South 52 degrees 09 minutes 56 seconds West 2,103.10 feet to a point having Coordinates of X = 2,736,381.00 and Y = 317,408.00; South 34 degrees 09 minutes 46 seconds West 571.64 feet to a point having Coordinates of X = 2,736,060.00 and Y = 316,935.00; South 31 degrees 07 minutes 22 seconds West 706.71 feet to a point having Coordinates of X = 2,735,694.72 and Y = 316,330.01; South 31 degrees 07 minutes 19 seconds West 1,606.19 feet to a point having Coordinates of X = 2,734,864.54 and Y = 314,955.00; thence West 11,014.54 feet to a point on the West line of said Block 39, having Coordinates of X = 2,723,850.00 and Y = 314,955.00; thence North 7,375.00 feet to the point of beginning, containing approximately **2,284.84 acres, LESS AND EXCEPT** that portion thereof, if any, lying seaward of the line three nautical miles from the coast line of Louisiana, as said three mile line has been decreed by the Supreme Court of the United States, as determined by a Special Master appointed therein, in litigation styled **United States v. State of Louisiana et al No. 9 Original**, in 1975, all as more particularly outlined on a plat in the Office of Mineral Resources, Department of Natural Resources. All bearings, distances and coordinates are based on the Louisiana Coordinate System of 1927, (South Zone).

NOTE: The above description of the Tract nominated for lease has been provided and corrected, where required, exclusively by the nomination party. Any mineral lease selected from this Tract and awarded by the Louisiana State Mineral Board shall be without warranty of any kind, either express, implied, or statutory, including, but not limited to, the implied warranties of merchantability and fitness for a particular purpose. Should the mineral lease awarded by the Louisiana State Mineral Board be subsequently modified, cancelled or abrogated due to the existence of conflicting leases, operating agreements, private claims or other future obligations or conditions which may affect all or any portion of the leased Tract, it shall not relieve the Lessee of the obligation to pay any bonus due thereon to the Louisiana State Mineral Board, nor shall

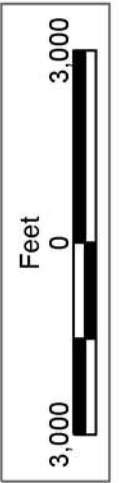
the Louisiana State Mineral Board be obligated to refund any consideration paid by the Lessor prior to such modification, cancellation, or abrogation, including, but not limited to, bonuses, rentals and royalties.

NOTE: The State of Louisiana does hereby reserve, and this lease shall be subject to, the imprescriptible right of surface use in the nature of a servitude in favor of the Department of Natural Resources, including its Offices and Commissions, for the sole purpose of implementing, constructing, servicing and maintaining approved coastal zone management and/or restoration projects. Utilization of any and all rights derived under this lease by the mineral lessee, its agents, successors or assigns, shall not interfere with nor hinder the reasonable surface use by the Department of Natural Resources, its Offices or Commissions, as herein above reserved.

Applicant: Stephen M. Jenkins, Inc.

Bidder	Cash Payment	Price/ Acre	Rental	Oil	Gas	Other





BLOCK BS0025

BLOCK BS0040

BLOCK BS0026

BLOCK BS0039

LOUISIANA  
UNITED STATES

BRETON SOUND AREA

BLOCK BS0027

P.O.B.  
X=2,723,850.00  
Y=322,330.00

Coastline

PLAQUEMINES PARISH

BLOCK BS0038

**TRACT 36043 - Portion of Block 38, Breton Sound Area, Plaquemines Parish, Louisiana**

The beds and bottoms of all water bodies belonging to the State of Louisiana located in that portion of Block 38, Breton Sound Area, together with any present lands formed by accretion to the shoreline, located in Plaquemines Parish, Louisiana, and not presently under mineral lease on February 11, 2004, the geographical area of which is more fully described as follows: Beginning at a point being the Southeast corner of Block 38, Breton Sound Area, having Coordinates of X = 2,723,850.00 and Y = 307,580.00; thence West 14,750.00 feet to its Southwest corner having Coordinates of X = 2,709,100.00 and Y = 307,580.00; thence North 7,375.00 feet to a point on the West line of the said Block 38 having Coordinates of X = 2,709,100.00 and Y = 314,955.00; thence East 14,750.00 feet to a point on the East line of said Block 38 having Coordinates of X = 2,723,850.00 and Y = 314,955.00; thence South 7,375.00 feet to the point of beginning, containing approximately **2,497.27 acres**, all as more particularly outlined on a plat on file in the Office of Mineral Resources, Department of Natural Resources. All bearings, distances and coordinates are based on Louisiana Coordinate System of 1927, (North or South Zone).

NOTE: The above description of the Tract nominated for lease has been provided and corrected, where required, exclusively by the nomination party. Any mineral lease selected from this Tract and awarded by the Louisiana State Mineral Board shall be without warranty of any kind, either express, implied, or statutory, including, but not limited to, the implied warranties of merchantability and fitness for a particular purpose. Should the mineral lease awarded by the Louisiana State Mineral Board be subsequently modified, cancelled or abrogated due to the existence of conflicting leases, operating agreements, private claims or other future obligations or conditions which may affect all or any portion of the leased Tract, it shall not relieve the Lessee of the obligation to pay any bonus due thereon to the Louisiana State Mineral Board, nor shall the Louisiana State Mineral Board be obligated to refund any consideration paid by the Lessor prior to such modification, cancellation, or abrogation, including, but not limited to, bonuses, rentals and royalties.

NOTE: The State of Louisiana does hereby reserve, and this lease shall be subject to, the imprescriptible right of surface use in the nature of a servitude in favor of the Department of Natural Resources, including its Offices and Commissions, for the sole purpose of implementing, constructing, servicing and maintaining approved coastal zone management and/or restoration projects. Utilization of any and all rights derived under this lease by the mineral lessee, its agents, successors or assigns, shall not interfere with nor hinder the reasonable surface use by the Department of Natural Resources, its Offices or Commissions, as herein above reserved.

NOTE: It appears, according to our records, that a portion of this Tract is located within the restrictive safety fairway area as set out by the Corps of Engineers, U.S. Army and/or the restrictive anchorage area as set out by the U.S. Coast Guard.

Applicant: Stephen M. Jenkins, Inc.

Bidder	Cash Payment	Price/ Acre	Rental	Oil	Gas	Other



BLOCK BS0039

BLOCK BS0042

LOUISIANA  
UNITED STATES



P.O.B.  
X=2,723,850.00  
Y=307,580.00

BLOCK BS0038

BLOCK BS0043

BRETON SOUND AREA

PLAQUEMINES PARISH

BLOCK BS0037

BLOCK BS0044

Coastline

**TRACT 36044 - Portion of Block 39, Breton Sound Area, Plaquemines Parish, Louisiana**

The beds and bottoms of all water bodies belonging to the State of Louisiana located in that portion of Block 39, Breton Sound Area, together with any present lands formed by accretion to the shoreline, located in Plaquemines Parish, Louisiana, and not presently under mineral lease on February 11, 2004, the geographical area of which is more fully described as follows: Beginning at a point being the Southwest corner of Block 39, Breton Sound Area, having Coordinates of X = 2,723,850.00 and Y = 307,580.00; thence North 7,375.00 feet to a point on the West line of said Block 39 having Coordinates of X = 2,723,850.00 and Y = 314,955.00; thence East 11,014.54 feet to a point on the Three Mile Decree Line derived from the June 16, 1975 Decree in the United States vs. Louisiana No. 9 Original having Coordinates of X = 2,734,864.54 and Y = 314,955.00; thence along said Decree Line the following courses: South 31 degrees 07 minutes 19 seconds West 3,007.93 feet to a point having Coordinates of X = 2,733,309.86 and Y = 312,380.00; South 31 degrees 07 minutes 20 seconds West 1,321.16 feet to a point having Coordinates of X = 2,732,627.00 and Y = 311,249.00; On a non tangent arc to the right with a radius of 18,240.60 feet and a chord bearing South 34 degrees 28 minutes 57 seconds West 2,137.30 feet to a point having Coordinates of X = 2,731,416.96 and Y = 309,487.23; South 37 degrees 50 minutes 38 seconds West 2,415.17 feet to a point on the South line of said Block 39 having Coordinates of X = 2,729,935.22 and Y = 307,580.00; thence West 6,085.22 feet to the point of beginning containing, approximately **1,472.32 acres, LESS AND EXCEPT** that portion thereof, if any, lying seaward of the line three nautical miles from the coast line of Louisiana, as said three mile line has been decreed by the Supreme Court of the United States, as determined by a Special Master appointed therein, in litigation styled **United States v. State of Louisiana et al No. 9 Original**, in 1975, all as more particularly outlined on a plat in the Office of Mineral Resources, Department of Natural Resources. All bearings, distances and coordinates are based on the Louisiana Coordinate System of 1927, (South Zone).

NOTE: The above description of the Tract nominated for lease has been provided and corrected, where required, exclusively by the nomination party. Any mineral lease selected from this Tract and awarded by the Louisiana State Mineral Board shall be without warranty of any kind, either express, implied, or statutory, including, but not limited to, the implied warranties of merchantability and fitness for a particular purpose. Should the mineral lease awarded by the Louisiana State Mineral Board be subsequently modified, cancelled or abrogated due to the existence of conflicting leases, operating agreements, private claims or other future obligations or conditions which may affect all or any portion of the leased Tract, it shall not relieve the Lessee of the obligation to pay any bonus due thereon to the Louisiana State Mineral Board, nor shall the Louisiana State Mineral Board be obligated to refund any consideration paid by the Lessor prior to such modification, cancellation, or abrogation, including, but not limited to, bonuses, rentals and royalties.

NOTE: The State of Louisiana does hereby reserve, and this lease shall be subject to, the imprescriptible right of surface use in the nature of a servitude in favor of the Department of Natural Resources, including its Offices and Commissions, for the sole purpose of implementing, constructing, servicing and maintaining approved coastal zone management and/or restoration projects. Utilization of any and all rights derived under this lease by the mineral lessee, its agents, successors or assigns, shall not interfere with nor hinder the reasonable surface use by the Department of Natural Resources, its Offices or Commissions, as herein above reserved.

Applicant: Stephen M. Jenkins, Inc.

Bidder	Cash Payment	Price/ Acre	Rental	Oil	Gas	Other



PLAQUEMINES PARISH

BRETON SOUND AREA

GULF OF MEXICO



BLOCK BS0039

BLOCK BS0042

LOUISIANA  
UNITED STATES

BLOCK BS0038

BLOCK BS0043

P.O.B.  
X=2,723,850.00  
Y=307,580.00

**TRACT 36045 - Portion of Block 43, Breton Sound Area, Plaquemines Parish, Louisiana**

The beds and bottoms of all water bodies belonging to the State of Louisiana located in that portion of Block 43, Breton Sound Area, together with any present lands formed by accretion to the shoreline, located in Plaquemines Parish, Louisiana, and not presently under mineral lease on February 11, 2004, the geographical area of which is more fully described as follows: Beginning at a point being the Northeast corner of Block 43, Breton Sound Area having Coordinates of X = 2,723,850.00 and Y = 307,580.00; thence South 5,675.93 feet to a point on the Three Mile Decree Line derived from the June 16, 1975 Decree in the United States vs. Louisiana No. 9 Original having Coordinates of X = 2,723,850.00 and Y = 301,904.07; thence on a non tangent arc to the right with a radius of 18,240.60 feet and a chord bearing South 60 degrees 06 minutes 39 seconds West 3,409.55 feet to a point having Coordinates of X = 2,720,893.95 and Y = 300,205.00; thence West 11,793.95 feet to a point on the West line of said Block 43 having Coordinates of X = 2,709,100.00 and Y = 300,205.00; thence North 7,375.00 feet to the Northwest corner of said Block 43 having Coordinates of X = 2,709,100.00 and Y = 307,580.00; thence East 14,750.00 feet to the point of beginning, containing approximately **2,443.79 acres, LESS AND EXCEPT** that portion thereof, if any, lying seaward of the line three nautical miles from the coast line of Louisiana, as said three mile line has been decreed by the Supreme Court of the United States, as determined by a Special Master appointed therein, in litigation styled **United States v. State of Louisiana et al No. 9 Original**, in 1975, all as more particularly outlined on a plat in the Office of Mineral Resources, Department of Natural Resources. All bearings, distances and coordinates are based on the Louisiana Coordinate System of 1927, (South Zone).

NOTE: The above description of the Tract nominated for lease has been provided and corrected, where required, exclusively by the nomination party. Any mineral lease selected from this Tract and awarded by the Louisiana State Mineral Board shall be without warranty of any kind, either express, implied, or statutory, including, but not limited to, the implied warranties of merchantability and fitness for a particular purpose. Should the mineral lease awarded by the Louisiana State Mineral Board be subsequently modified, cancelled or abrogated due to the existence of conflicting leases, operating agreements, private claims or other future obligations or conditions which may affect all or any portion of the leased Tract, it shall not relieve the Lessee of the obligation to pay any bonus due thereon to the Louisiana State Mineral Board, nor shall the Louisiana State Mineral Board be obligated to refund any consideration paid by the Lessor prior to such modification, cancellation, or abrogation, including, but not limited to, bonuses, rentals and royalties.

NOTE: The State of Louisiana does hereby reserve, and this lease shall be subject to, the imprescriptible right of surface use in the nature of a servitude in favor of the Department of Natural Resources, including its Offices and Commissions, for the sole purpose of implementing,

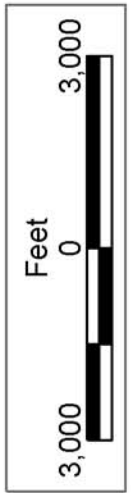


constructing, servicing and maintaining approved coastal zone management and/or restoration projects. Utilization of any and all rights derived under this lease by the mineral lessee, its agents, successors or assigns, shall not interfere with nor hinder the reasonable surface use by the Department of Natural Resources, its Offices or Commissions, as herein above reserved.

NOTE: It appears, according to our records, that a portion of this Tract is located within the restrictive safety fairway area as set out by the Corps of Engineers, U.S. Army and/or the restrictive anchorage area as set out by the U.S. Coast Guard.

Applicant: Stephen M. Jenkins, Inc.

Bidder	Cash Payment	Price/ Acre	Rental	Oil	Gas	Other



**TRACT 36046 - Portion of Block 43, Breton Sound Area, Plaquemines Parish, Louisiana**

The beds and bottoms of all water bodies belonging to the State of Louisiana located in that portion of Block 43, Breton Sound Area, together with any present lands formed by accretion to the shoreline, located in Plaquemines Parish, Louisiana, and not presently under mineral lease on February 11, 2004, the geographical area of which is more fully described as follows: Beginning at a point being on the West line of Block 43, Breton Sound Area having Coordinates of X = 2,709,100.00 and Y = 300,205.00; thence East 11,793.95 feet to a point on the Three Mile Decree Line derived from the June 16, 1975 Decree in the United States vs. Louisiana No. 9 Original having Coordinates of X = 2,720,893.95 and Y = 300,205.00; thence along said Three Mile Decree Line the following courses: On a non tangent arc to the right with a radius of 18,240.60 feet and a chord bearing South 65 degrees 41 minutes 13 seconds West 136.01 feet to a point having Coordinates of X = 2,720,770.00 and Y = 300,149.00; South 65 degrees 54 minutes 27 seconds West 1,700.10 feet to a point having Coordinates of X = 2,719,218.00 and Y = 299,455.00; On a non tangent arc to the right with a radius of 18,240.60 feet and a chord bearing South 74 degrees 04 minutes 28 seconds West 5,178.77 feet to a point having Coordinates of X = 2,714,238.00 and Y = 298,034.00; South 71 degrees 03 minutes 08 seconds West 5,432.35 feet to a point on the West line of said Block 43 having Coordinates of X = 2,709,100.00 and Y = 296,270.08; thence North 3,934.92 feet to the point of beginning containing approximately **556.17 acres, LESS AND EXCEPT** that portion thereof, if any, lying seaward of the line three nautical miles from the coast line of Louisiana, as said three mile line has been decreed by the Supreme Court of the United States, as determined by a Special Master appointed therein, in litigation styled **United States v. State of Louisiana et al No. 9 Original**, in 1975, all as more particularly outlined on a plat in the Office of Mineral Resources, Department of Natural Resources. All bearings, distances and coordinates are based on the Louisiana Coordinate System of 1927, (South Zone).

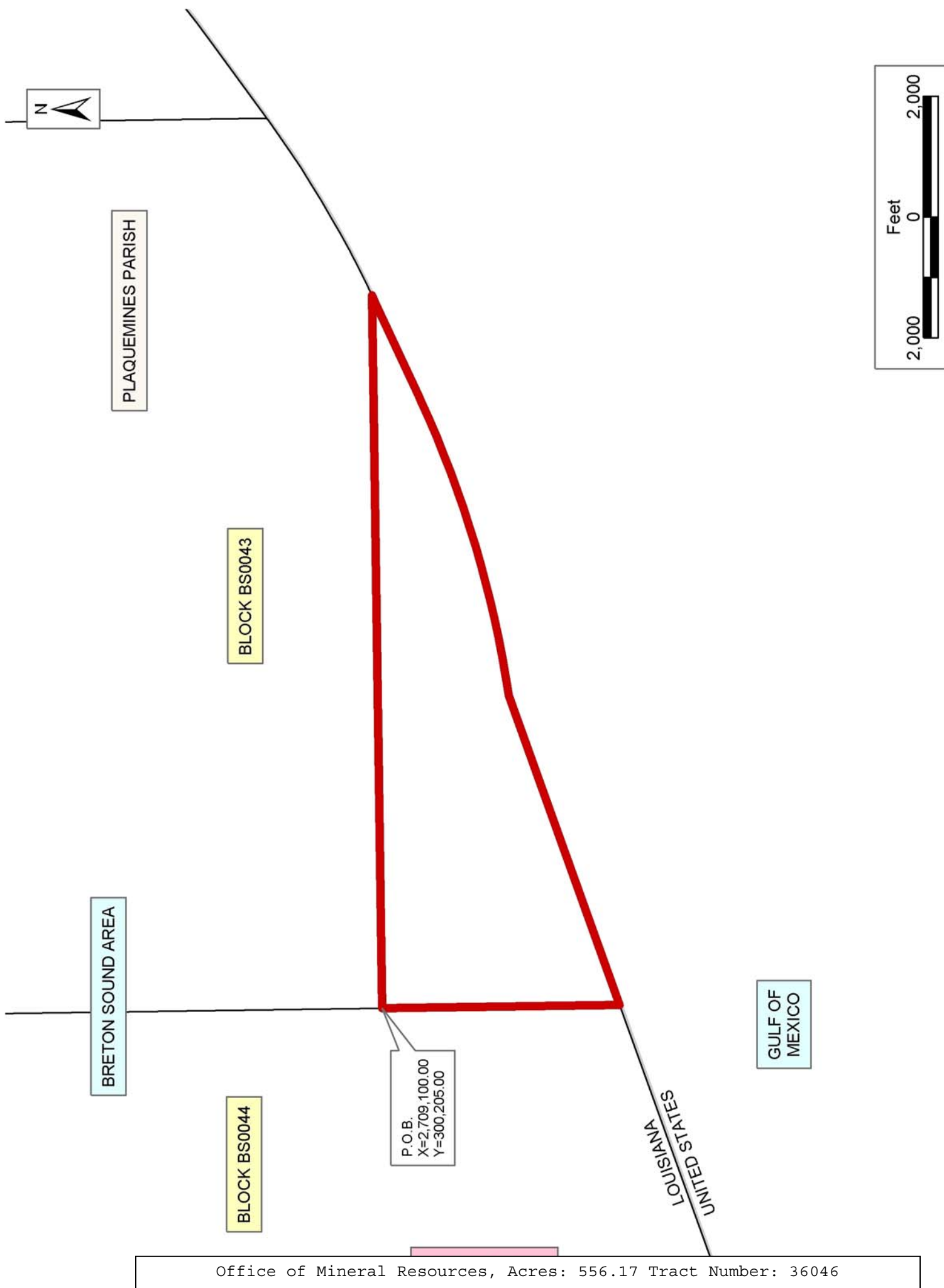
NOTE: The above description of the Tract nominated for lease has been provided and corrected, where required, exclusively by the nomination party. Any mineral lease selected from this Tract and awarded by the Louisiana State Mineral Board shall be without warranty of any kind, either express, implied, or statutory, including, but not limited to, the implied warranties of merchantability and fitness for a particular purpose. Should the mineral lease awarded by the Louisiana State Mineral Board be subsequently modified, cancelled or abrogated due to the existence of conflicting leases, operating agreements, private claims or other future obligations or conditions which may affect all or any portion of the leased Tract, it shall not relieve the Lessee of the obligation to pay any bonus due thereon to the Louisiana State Mineral Board, nor shall the Louisiana State Mineral Board be obligated to refund any consideration paid by the Lessor prior to such modification, cancellation, or abrogation, including, but not limited to, bonuses, rentals and royalties.

NOTE: The State of Louisiana does hereby reserve, and this lease shall be subject to, the imprescriptible right of surface use in the nature of a servitude in favor of the Department of Natural Resources, including its Offices and Commissions, for the sole purpose of implementing, constructing, servicing and maintaining approved coastal zone management and/or restoration projects. Utilization of any and all rights derived under this lease by the mineral lessee, its agents, successors or assigns, shall not interfere with nor hinder the reasonable surface use by the Department of Natural Resources, its Offices or Commissions, as herein above reserved.

NOTE: It appears, according to our records, that a portion of this Tract is located within the restrictive safety fairway area as set out by the Corps of Engineers, U.S. Army and/or the restrictive anchorage area as set out by the U.S. Coast Guard.

Applicant: Stephen M. Jenkins, Inc.

Bidder	Cash Payment	Price/ Acre	Rental	Oil	Gas	Other



**TRACT 36047 - Portion of Block 50, West Delta Area, Plaquemines Parish, Louisiana**

The beds and bottoms of all water bodies belonging to the State of Louisiana located in that portion of Block 50, West Delta Area, together with any present lands formed by accretion to the shoreline, located in Plaquemines Parish, Louisiana, and not presently under mineral lease on February 11, 2004, the geographical area of which is more fully described as follows: Beginning at the Northeast corner of Block 50, West Delta Area, having Coordinates of X = 2,601,276.75 and Y = 165,518.40; thence along the East boundary of said Block 50 the following courses: South 00 degrees 58 minutes 37 seconds East 5,628.53 feet to a corner having Coordinates of X = 2,601,372.72 and Y = 159,890.69; South 29 degrees 19 minutes 32 seconds East 406.88 feet to a corner having Coordinates of X = 2,601,572.00 and Y = 159,535.95 and South 3,636.95 feet to a point having Coordinates of X = 2,601,572.00 and Y = 155,899.00; thence West 4,362.00 feet to a point on the Three Mile Decree line having Coordinates of X = 2,597,210 and Y = 155,899; thence along the said Three Mile Decree line the following courses: Northwesterly on an arc having a radius of 18,240.60 feet and a center at X = 2,614,790 and Y = 160,765 to a point having Coordinates of X = 2,596,949 and Y = 156,969; Northwesterly on a straight line to a point having Coordinates of X = 2,596,342 and Y = 158,695; Northwesterly on an arc having a radius of 18,240.60 feet and a center at X = 2,613,550 and Y = 164,745 to a point having Coordinates of X = 2,595,312 and Y = 165,072; Northeasterly on a straight line to a point having Coordinates of X = 2,595,316 and Y = 165,282 and Northwesterly on an arc having a radius of 18,240.60 feet and a center at X = 2,607,710 and Y = 178,665 to a point on the North boundary of said Block 50 having Coordinates of X = 2,595,065.38 and Y = 165,518.40; thence East 6,211.37 feet along the North boundary of said Block 50 to the point of beginning, containing approximately **1,207.33 acres, LESS AND EXCEPT** that portion thereof, if any, lying seaward of the line three nautical miles from the coast line of Louisiana, as said three mile line has been decreed by the Supreme Court of the United States, as determined by a Special Master appointed therein, in litigation styled **United States v. State of Louisiana et al No. 9 Original**, in 1975, all as more particularly outlined on a plat in the Office of Mineral Resources, Department of Natural Resources. All bearings, distances and coordinates are based on the Louisiana Coordinate System of 1927, (South Zone).

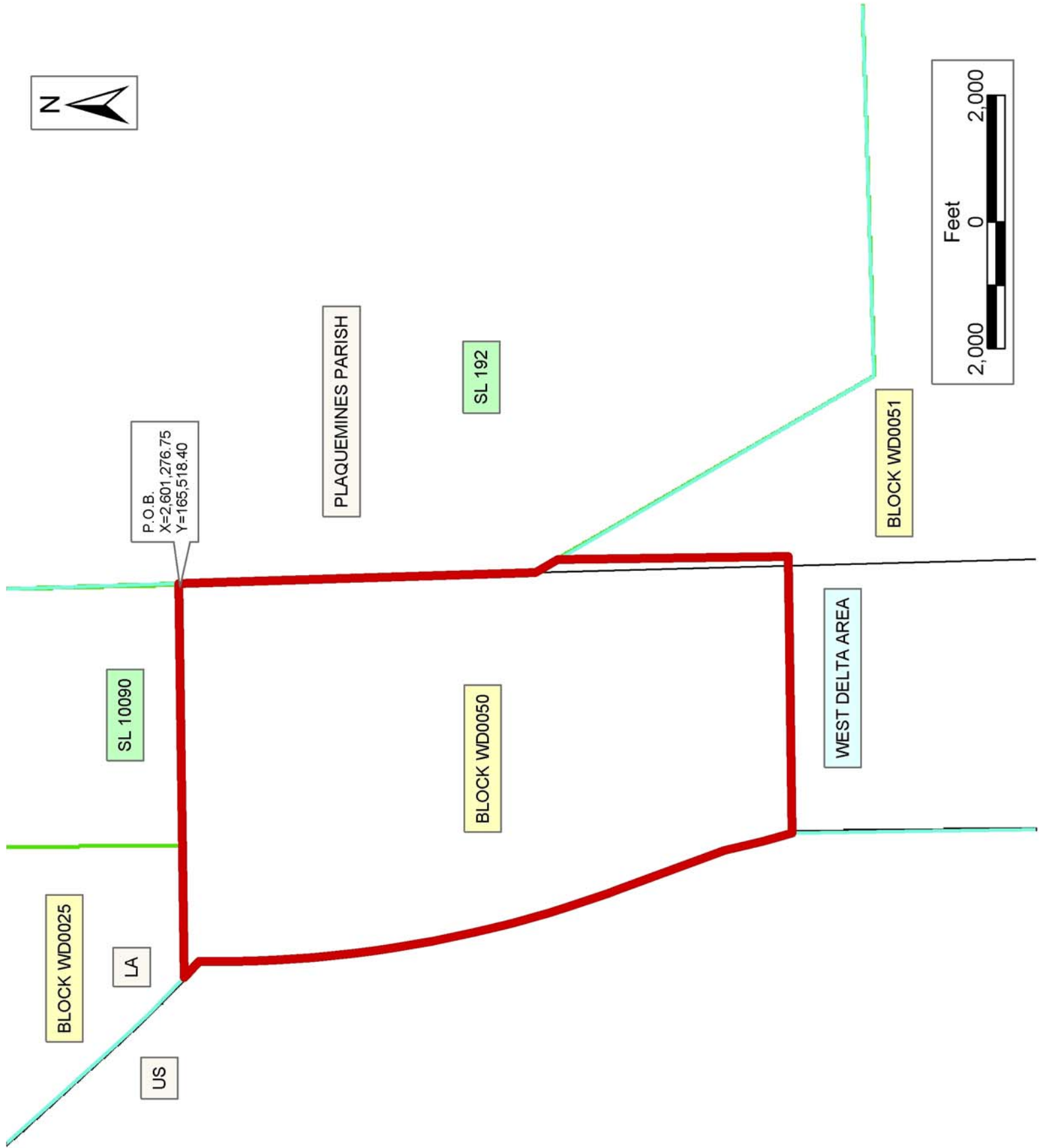
NOTE: The above description of the Tract nominated for lease has been provided and corrected, where required, exclusively by the nomination party. Any mineral lease selected from this Tract and awarded by the Louisiana State Mineral Board shall be without warranty of any kind, either express, implied, or statutory, including, but not limited to, the implied warranties of merchantability and fitness for a particular purpose. Should the mineral lease awarded by the Louisiana State Mineral Board be subsequently modified, cancelled or abrogated due to the existence of conflicting leases, operating agreements, private claims or other future obligations or conditions which may affect all or any portion

of the leased Tract, it shall not relieve the Lessee of the obligation to pay any bonus due thereon to the Louisiana State Mineral Board, nor shall the Louisiana State Mineral Board be obligated to refund any consideration paid by the Lessor prior to such modification, cancellation, or abrogation, including, but not limited to, bonuses, rentals and royalties.

NOTE: The State of Louisiana does hereby reserve, and this lease shall be subject to, the imprescriptible right of surface use in the nature of a servitude in favor of the Department of Natural Resources, including its Offices and Commissions, for the sole purpose of implementing, constructing, servicing and maintaining approved coastal zone management and/or restoration projects. Utilization of any and all rights derived under this lease by the mineral lessee, its agents, successors or assigns, shall not interfere with nor hinder the reasonable surface use by the Department of Natural Resources, its Offices or Commissions, as herein above reserved.

Applicant: Gray Production Company

Bidder	Cash Payment	Price/ Acre	Rental	Oil	Gas	Other





**TRACT 36048 - Portion of Block 51, West Delta Area, Plaquemines Parish, Louisiana**

The beds and bottoms of all water bodies belonging to the State of Louisiana located in that portion of Block 51, West Delta Area, together with any present lands formed by accretion to the shoreline, located in Plaquemines Parish, Louisiana, and not presently under mineral lease on February 11, 2004, the geographical area of which is more fully described as follows: Beginning at the Southwest corner of Block 51, West Delta Area, having Coordinates of X = 2,601,572.00 and Y = 144,676.30; thence North 14,859.65 feet along the West boundary of said Block 51 to its Northwest corner, having Coordinates of X = 2,601,572.00 and Y = 159,535.95; thence along the Northern boundary of said Block 51 the following courses: South 29 degrees 19 minutes 32 seconds East 5,760.97 feet to a corner having Coordinates of X = 2,604,393.57 and Y = 154,513.25 and North 89 degrees 03 minutes 12 seconds East 6,064.73 feet to a point having Coordinates of X = 2,610,457.47 and Y = 154,613.44; thence South 9,937.14 feet to a point on the South boundary of said Block 51 having Coordinates of X = 2,610,457.47 and Y = 144,676.30; thence West 8,885.47 feet along the South boundary of said Block 51 to the point of beginning, **LESS AND EXCEPT** all that portion, if any, of State Lease No. 192, as amended, that may lie within the above described tract, containing approximately **2,176.21 acres**, all as more particularly outlined on a plat on file in the Office of Mineral Resources, Department of Natural Resources. All bearings, distances and coordinates are based on Louisiana Coordinate System of 1927, (North or South Zone).

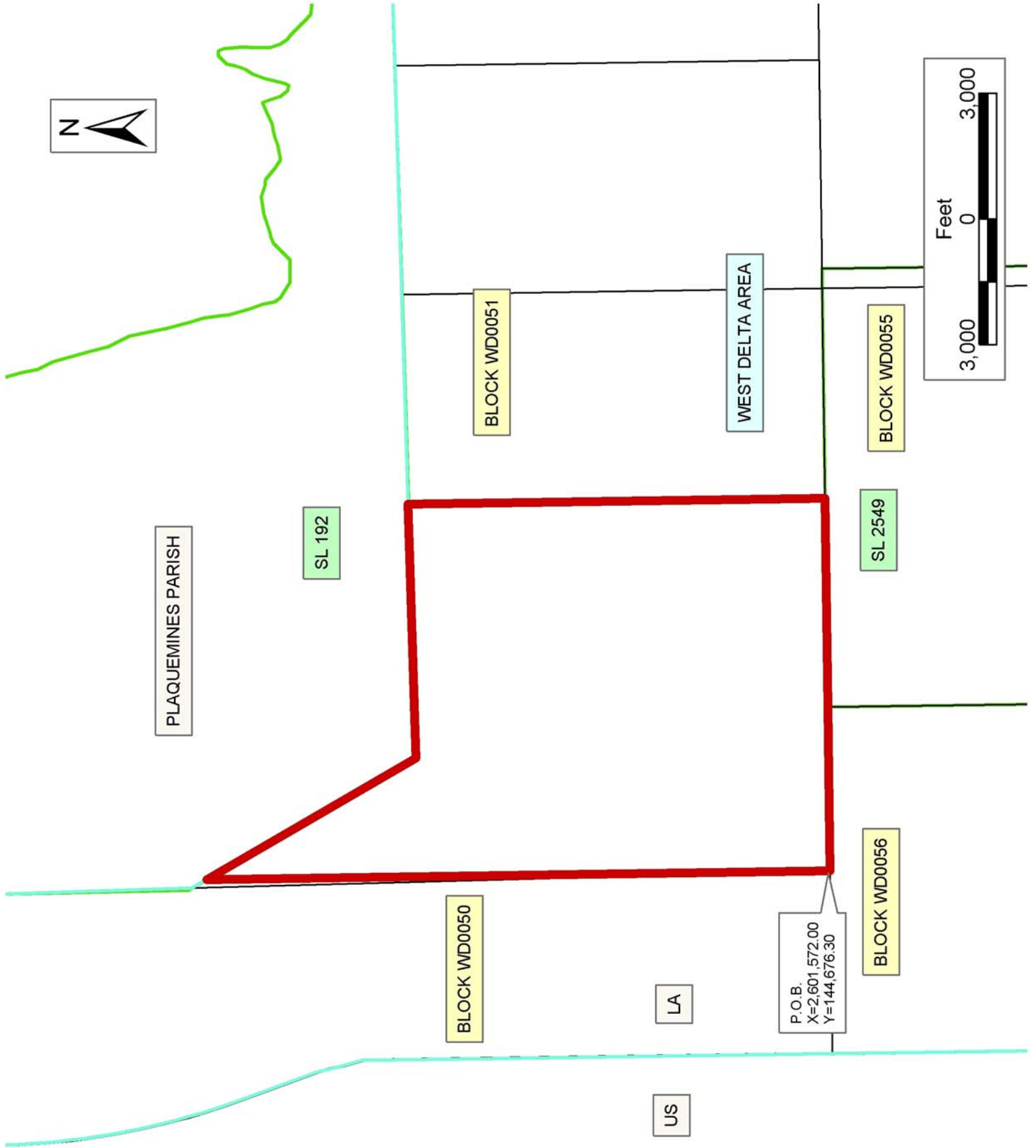
NOTE: The above description of the Tract nominated for lease has been provided and corrected, where required, exclusively by the nomination party. Any mineral lease selected from this Tract and awarded by the Louisiana State Mineral Board shall be without warranty of any kind, either express, implied, or statutory, including, but not limited to, the implied warranties of merchantability and fitness for a particular purpose. Should the mineral lease awarded by the Louisiana State Mineral Board be subsequently modified, cancelled or abrogated due to the existence of conflicting leases, operating agreements, private claims or other future obligations or conditions which may affect all or any portion of the leased Tract, it shall not relieve the Lessee of the obligation to pay any bonus due thereon to the Louisiana State Mineral Board, nor shall the Louisiana State Mineral Board be obligated to refund any consideration paid by the Lessor prior to such modification, cancellation, or abrogation, including, but not limited to, bonuses, rentals and royalties.

NOTE: The State of Louisiana does hereby reserve, and this lease shall be subject to, the imprescriptible right of surface use in the nature of a servitude in favor of the Department of Natural Resources, including its Offices and Commissions, for the sole purpose of implementing, constructing, servicing and maintaining approved coastal zone management and/or restoration projects. Utilization of any and all rights derived under this lease by the mineral lessee, its agents, successors or assigns,

shall not interfere with nor hinder the reasonable surface use by the Department of Natural Resources, its Offices or Commissions, as herein above reserved.

Applicant: Gray Production Company

Bidder	Cash Payment	Price/ Acre	Rental	Oil	Gas	Other



**TRACT 36049 - Portion of Block 50, West Delta Area, Plaquemines Parish, Louisiana**

The beds and bottoms of all water bodies belonging to the State of Louisiana located in that portion of Block 50, West Delta Area, together with any present lands formed by accretion to the shoreline, located in Plaquemines Parish, Louisiana, and not presently under mineral lease on February 11, 2004, the geographical area of which is more fully described as follows: Beginning at the Southeast corner of Block 50, West Delta Area, having Coordinates of X = 2,601,572.00 and Y = 144,676.30; thence West 4,355.34 feet to a point on the Three Mile Decree line having Coordinates of X = 2,597,216.66 and Y = 144,676.30; thence Northwesterly on a straight line along the said Three Mile Decree line to a point having Coordinates of X = 2,597,210.00 and Y = 155,899.00; thence East 4,362.00 feet to a point on the East boundary of said Block 50 having Coordinates of X = 2,601,572.00 and Y = 155,899.00; thence South 11,222.70 feet along the said East boundary of Block 50 to the point of beginning, containing approximately **1,122.96 acres, LESS AND EXCEPT** that portion thereof, if any, lying seaward of the line three nautical miles from the coast line of Louisiana, as said three mile line has been decreed by the Supreme Court of the United States, as determined by a Special Master appointed therein, in litigation styled **United States v. State of Louisiana et al No. 9 Original**, in 1975, all as more particularly outlined on a plat in the Office of Mineral Resources, Department of Natural Resources. All bearings, distances and coordinates are based on the Louisiana Coordinate System of 1927, (South Zone).

NOTE: The above description of the Tract nominated for lease has been provided and corrected, where required, exclusively by the nomination party. Any mineral lease selected from this Tract and awarded by the Louisiana State Mineral Board shall be without warranty of any kind, either express, implied, or statutory, including, but not limited to, the implied warranties of merchantability and fitness for a particular purpose. Should the mineral lease awarded by the Louisiana State Mineral Board be subsequently modified, cancelled or abrogated due to the existence of conflicting leases, operating agreements, private claims or other future obligations or conditions which may affect all or any portion of the leased Tract, it shall not relieve the Lessee of the obligation to pay any bonus due thereon to the Louisiana State Mineral Board, nor shall the Louisiana State Mineral Board be obligated to refund any consideration paid by the Lessor prior to such modification, cancellation, or abrogation, including, but not limited to, bonuses, rentals and royalties.

NOTE: The State of Louisiana does hereby reserve, and this lease shall be subject to, the imprescriptible right of surface use in the nature of a servitude in favor of the Department of Natural Resources, including its Offices and Commissions, for the sole purpose of implementing, constructing, servicing and maintaining approved coastal zone management and/or restoration projects. Utilization of any and all rights derived under this lease by the mineral lessee, its agents, successors or assigns,

shall not interfere with nor hinder the reasonable surface use by the Department of Natural Resources, its Offices or Commissions, as herein above reserved.

Applicant: Gray Production Company

Bidder	Cash Payment	Price/ Acre	Rental	Oil	Gas	Other

