

**TRACT 36030 - Portion of Block 16, West Cameron Area, Revised, Cameron Parish, Louisiana**

The beds and bottoms of all water bodies belonging to the State of Louisiana located in that portion of Block 16, West Cameron Area, Revised, together with any present lands formed by accretion to the shoreline, located in Cameron Parish, Louisiana, and not presently under mineral lease on February 11, 2004, the geographical area of which is more fully described as follows: Beginning at a point on the South boundary of Block 16, West Cameron Area, Revised, having Coordinates of X = 1,221,734.16 and Y = 379,032.19; thence North 12,647.39 feet to a point on the 1975 Decree Shoreline having Coordinates of X = 1,221,734.16 and Y = 391,679.58; thence along the said 1975 Decree Shoreline the following courses: Northeasterly on a straight line to a point having Coordinates of X = 1,225,421.00 and Y = 393,370.00; Southeasterly in a straight line to a point having Coordinates of X = 1,225,768.00 and Y = 393,281.00; Northeasterly on a straight line to a point having Coordinates of X = 1,226,444.00 and Y = 393,922.00; Northeasterly on a straight line to a point having Coordinates of X = 1,228,772.00 and Y = 394,775.00; Southeasterly on a straight line to a point having Coordinates of X = 1,228,846.00 and Y = 394,497.00; Northeasterly on a straight line to the Northeast corner of said Block 16 having Coordinates of X = 1,229,113.18 and Y = 394,587.39; thence South 15,555.20 feet along the East boundary of said Block 16 to its Southeast corner having Coordinates of X = 1,229,113.18 and Y = 379,032.19; thence West 7,379.02 feet along the South boundary of said Block 16 to the point of beginning, containing approximately **2,422.15 acres**, all as more particularly outlined on a plat on file in the Office of Mineral Resources, Department of Natural Resources. All bearings, distances and coordinates are based on Louisiana Coordinate System of 1927, (North or South Zone).

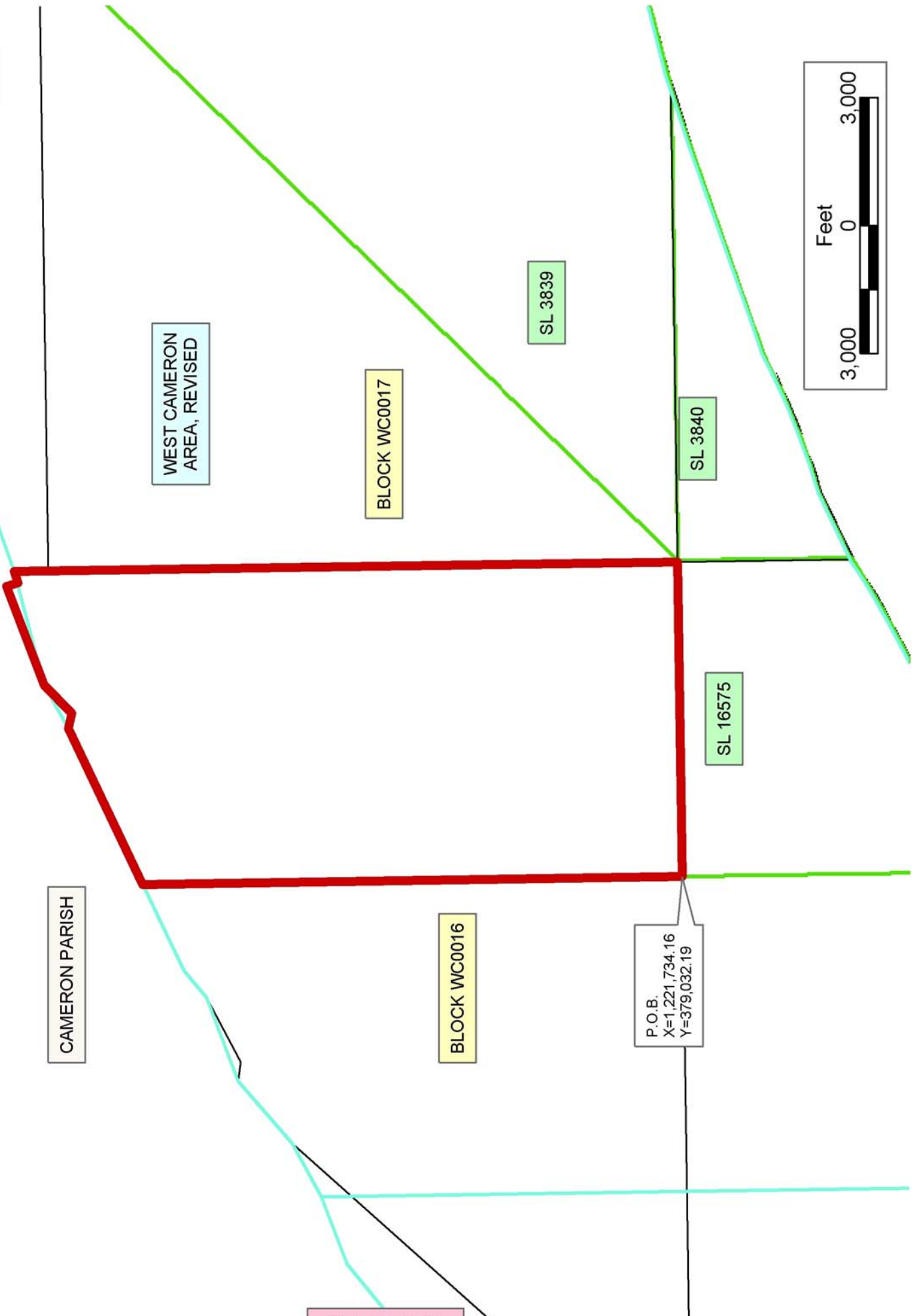
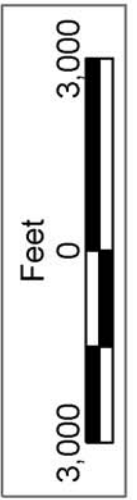
NOTE: The above description of the Tract nominated for lease has been provided and corrected, where required, exclusively by the nomination party. Any mineral lease selected from this Tract and awarded by the Louisiana State Mineral Board shall be without warranty of any kind, either express, implied, or statutory, including, but not limited to, the implied warranties of merchantability and fitness for a particular purpose. Should the mineral lease awarded by the Louisiana State Mineral Board be subsequently modified, cancelled or abrogated due to the existence of conflicting leases, operating agreements, private claims or other future obligations or conditions which may affect all or any portion of the leased Tract, it shall not relieve the Lessee of the obligation to pay any bonus due thereon to the Louisiana State Mineral Board, nor shall the Louisiana State Mineral Board be obligated to refund any consideration paid by the Lessor prior to such modification, cancellation, or abrogation, including, but not limited to, bonuses, rentals and royalties.

NOTE: The State of Louisiana does hereby reserve, and this lease shall be subject to, the imprescriptible right of surface use in the nature of a servitude in favor of the Department of Natural Resources, including its

Offices and Commissions, for the sole purpose of implementing, constructing, servicing and maintaining approved coastal zone management and/or restoration projects. Utilization of any and all rights derived under this lease by the mineral lessee, its agents, successors or assigns, shall not interfere with nor hinder the reasonable surface use by the Department of Natural Resources, its Offices or Commissions, as herein above reserved.

Applicant: S. R. Verret

Bidder	Cash Payment	Price/Acre	Rental	Oil	Gas	Other



**TRACT 36031 - Portion of Block 17, West Cameron Area, Revised, Cameron Parish, Louisiana**

The beds and bottoms of all water bodies belonging to the State of Louisiana located in that portion of Block 17, West Cameron Area, Revised, together with any present lands formed by accretion to the shoreline, located in Cameron Parish, Louisiana, and not presently under mineral lease on February 11, 2004, the geographical area of which is more fully described as follows: Beginning at the Northeast corner of Block 17, West Cameron Area, Revised, also being the Northeast corner of State Lease No. 3839 having Coordinates of X = 1,243,871.23 and Y = 393,790.24; thence South 45 degrees 00 minutes 00 seconds West 20,871.03 feet along the Western boundary of said State Lease No. 3839 to its Southwest corner, also being the Southwest corner of said Block 17 having Coordinates of X = 1,229,113.18 and Y = 379,032.19; thence North 14,758.05 feet along the West boundary of said Block 17 to its Northwest corner having Coordinates of X = 1,229,113.18 and Y = 393,790.24; thence East 14,758.05 feet along the North boundary of said Block 17 to the point of beginning, containing approximately **2,500.00 acres**, all as more particularly outlined on a plat on file in the Office of Mineral Resources, Department of Natural Resources. All bearings, distances and coordinates are based on Louisiana Coordinate System of 1927, (North or South Zone).

NOTE: The above description of the Tract nominated for lease has been provided and corrected, where required, exclusively by the nomination party. Any mineral lease selected from this Tract and awarded by the Louisiana State Mineral Board shall be without warranty of any kind, either express, implied, or statutory, including, but not limited to, the implied warranties of merchantability and fitness for a particular purpose. Should the mineral lease awarded by the Louisiana State Mineral Board be subsequently modified, cancelled or abrogated due to the existence of conflicting leases, operating agreements, private claims or other future obligations or conditions which may affect all or any portion of the leased Tract, it shall not relieve the Lessee of the obligation to pay any bonus due thereon to the Louisiana State Mineral Board, nor shall the Louisiana State Mineral Board be obligated to refund any consideration paid by the Lessor prior to such modification, cancellation, or abrogation, including, but not limited to, bonuses, rentals and royalties.

NOTE: The State of Louisiana does hereby reserve, and this lease shall be subject to, the imprescriptible right of surface use in the nature of a servitude in favor of the Department of Natural Resources, including its Offices and Commissions, for the sole purpose of implementing, constructing, servicing and maintaining approved coastal zone management and/or restoration projects. Utilization of any and all rights derived under this lease by the mineral lessee, its agents, successors or assigns, shall not interfere with nor hinder the reasonable surface use by the Department of Natural Resources, its Offices or Commissions, as herein above reserved.

Applicant: S. R. Verret

Bidder	Cash Payment	Price/Acre	Rental	Oil	Gas	Other



P.O.B.  
X=1,243,871.23  
Y=393,790.24

CAMERON PARISH

WEST CAMERON AREA, REVISED

BLOCK WC0018

SL 3841

LA

US

BLOCK WC0017

SL 3839

SL 3840

BLOCK WC0016

SL 16575



**TRACT 36032 - Portion of Block 16, West Cameron Area, Revised, Cameron Parish, Louisiana**

The beds and bottoms of all water bodies belonging to the State of Louisiana located in that portion of Block 16, West Cameron Area, Revised, together with any present lands formed by accretion to the shoreline, located in Cameron Parish, Louisiana, and not presently under mineral lease on February 11, 2004, the geographical area of which is more fully described as follows: Beginning at a point on the South boundary of Block 16, West Cameron Area, Revised, having Coordinates of X = 1,221,734.16 and Y = 379,032.19; thence West 7,379.02 feet along said South boundary of Block 16 to its Southwest corner having Coordinates of X = 1,214,355.14 and Y = 379,032.19; thence North 8,565.10 feet along the West boundary of said Block 16 to its Northwest corner on the 1975 Decree Shoreline having Coordinates of X = 1,214,355.14 and Y = 387,597.29; thence along said 1975 Decree Shoreline the following courses: Northeasterly on a straight line to a point having Coordinates of X = 1,215,615.00 and Y = 388,263.00; Northeasterly on a straight line to a point having Coordinates of X = 1,216,582.00 and Y = 389,216.00; Northeasterly on a straight line to a point having Coordinates of X = 1,217,089.00 and Y = 389,513.00; Southeasterly on a straight line to a point having Coordinates of X = 1,217,536.00 and Y = 389,445.00; Northeasterly on a straight line to a point having Coordinates of X = 1,219,065.00 and Y = 390,227.00; Northeasterly on a straight line to a point having Coordinates of X = 1,219,698.00 and Y = 390,746.00; Northeasterly on a straight line to a point having Coordinates of X = 1,221,734.16 and Y = 391,679.58; thence South 12,647.39 feet to the point of beginning, containing approximately **1,815.35 acres**, all as more particularly outlined on a plat on file in the Office of Mineral Resources, Department of Natural Resources. All bearings, distances and coordinates are based on Louisiana Coordinate System of 1927, (North or South Zone).

NOTE: The above description of the Tract nominated for lease has been provided and corrected, where required, exclusively by the nomination party. Any mineral lease selected from this Tract and awarded by the Louisiana State Mineral Board shall be without warranty of any kind, either express, implied, or statutory, including, but not limited to, the implied warranties of merchantability and fitness for a particular purpose. Should the mineral lease awarded by the Louisiana State Mineral Board be subsequently modified, cancelled or abrogated due to the existence of conflicting leases, operating agreements, private claims or other future obligations or conditions which may affect all or any portion of the leased Tract, it shall not relieve the Lessee of the obligation to pay any bonus due thereon to the Louisiana State Mineral Board, nor shall the Louisiana State Mineral Board be obligated to refund any consideration paid by the Lessor prior to such modification, cancellation, or abrogation, including, but not limited to, bonuses, rentals and royalties.

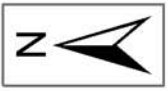
NOTE: The State of Louisiana does hereby reserve, and this lease shall be subject to, the imprescriptible right of surface use in the nature of a

servitude in favor of the Department of Natural Resources, including its Offices and Commissions, for the sole purpose of implementing, constructing, servicing and maintaining approved coastal zone management and/or restoration projects. Utilization of any and all rights derived under this lease by the mineral lessee, its agents, successors or assigns, shall not interfere with nor hinder the reasonable surface use by the Department of Natural Resources, its Offices or Commissions, as herein above reserved.

Applicant: S. R. Verret

Bidder	Cash Payment	Price/Acre	Rental	Oil	Gas	Other

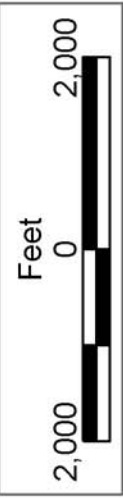




WEST CAMERON  
AREA, REVISED

P.O.B.  
X=1,221,734.16  
Y=379,032.19

SL 16575



CAMERON PARISH

BLOCK WC0016

BLOCK WC0049

SABINE PASS AREA

BLOCK SA0001

BLOCK SA0002

**TRACT 36033 - Portion of Block 30, West Cameron Area, Revised, Cameron Parish, Louisiana**

The beds and bottoms of all water bodies belonging to the State of Louisiana located in that portion of Block 30, West Cameron Area, Revised, together with any present lands formed by accretion to the shoreline, located in Cameron Parish, Louisiana, and not presently under mineral lease on February 11, 2004, the geographical area of which is more fully described as follows: Beginning at a point on the East boundary of Block 30, West Cameron Area, Revised, having Coordinates of X = 1,435,725.86 and Y = 387,308.75; thence South 6,481.49 feet along the said East boundary of Block 30 to a point on the Three Mile Decree Line having Coordinates of X = 1,435,725.86 and Y = 380,827.26; thence along said Three Mile Decree Line the following courses: Northwesterly in a straight line to a point having Coordinates of X = 1,435,142.00 and Y = 381,048.00; Northwesterly in a straight line to a point having Coordinates of X = 1,431,147.00 and Y = 382,502.00; Northwesterly on an arc having a radius of 18,240.60 feet and a center at X = 1,431,465.00 and Y = 400,740.00 to a point having Coordinates of X = 1,426,148.00 and Y = 383,291.00; Northwesterly in a straight line to a point having Coordinates of X = 1,423,703.00 and Y = 384,036.00; Northwesterly on an arc having a radius of 18,240.60 feet and a center at X = 1,429,020.00 and Y = 401,485.00 to a point having Coordinates of X = 1,421,665.00 and Y = 384,793.00; Northwesterly in a straight line to a point having Coordinates of X = 1,421,218.00 and Y = 384,903.00; Northwesterly on an arc having a radius of 18,240.60 feet and a center at X = 1,425,600.00 and Y = 402,610.00 to a point on the West boundary of said Block 30 having Coordinates of X = 1,420,967.81 and Y = 384,967.37; thence North 2,341.38 feet along the said West boundary of Block 30 to a point having Coordinates of X = 1,420,967.81 and Y = 387,308.75; thence East 14,758.05 feet to the point of beginning, containing approximately **1,492.92 acres, LESS AND EXCEPT** that portion thereof, if any, lying seaward of the line three nautical miles from the coast line of Louisiana, as said three mile line has been decreed by the Supreme Court of the United States, as determined by a Special Master appointed therein, in litigation styled **United States v. State of Louisiana et al No. 9 Original**, in 1975, all as more particularly outlined on a plat in the Office of Mineral Resources, Department of Natural Resources. All bearings, distances and coordinates are based on the Louisiana Coordinate System of 1927, (South Zone).

NOTE: The above description of the Tract nominated for lease has been provided and corrected, where required, exclusively by the nomination party. Any mineral lease selected from this Tract and awarded by the Louisiana State Mineral Board shall be without warranty of any kind, either express, implied, or statutory, including, but not limited to, the implied warranties of merchantability and fitness for a particular purpose. Should the mineral lease awarded by the Louisiana State Mineral Board be subsequently modified, cancelled or abrogated due to the existence of conflicting leases, operating agreements, private claims or other future obligations or conditions which may affect all or any portion

of the leased Tract, it shall not relieve the Lessee of the obligation to pay any bonus due thereon to the Louisiana State Mineral Board, nor shall the Louisiana State Mineral Board be obligated to refund any consideration paid by the Lessor prior to such modification, cancellation, or abrogation, including, but not limited to, bonuses, rentals and royalties.

NOTE: The State of Louisiana does hereby reserve, and this lease shall be subject to, the imprescriptible right of surface use in the nature of a servitude in favor of the Department of Natural Resources, including its Offices and Commissions, for the sole purpose of implementing, constructing, servicing and maintaining approved coastal zone management and/or restoration projects. Utilization of any and all rights derived under this lease by the mineral lessee, its agents, successors or assigns, shall not interfere with nor hinder the reasonable surface use by the Department of Natural Resources, its Offices or Commissions, as herein above reserved.

Applicant: Erin Bila

Bidder	Cash Payment	Price/Acre	Rental	Oil	Gas	Other



P.O.B.  
X=1,435,725.86  
Y=387,308.75

BLOCK WC0031

WEST CAMERON AREA, REVISED

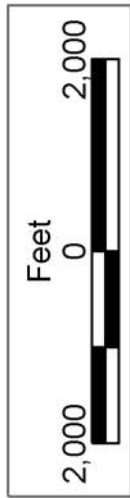
BLOCK WC0030

CAMERON PARISH

BLOCK WC0029

LA

US



**TRACT 36034 - Portion of Block 1, Sabine Pass Area, Cameron Parish, Louisiana**

The beds and bottoms of all water bodies belonging to the State of Louisiana located in that portion of Block 1, Sabine Pass Area, together with any present lands formed by accretion to the shoreline, located in Cameron Parish, Louisiana, and not presently under mineral lease on February 11, 2004, the geographical area of which is more fully described as follows: Beginning at the Southeast corner of Block 1, Sabine Pass Area, having Coordinates of X = 1,214,355.14 and Y = 379,032.19; thence West 8,969.31 feet along the South boundary of said Block 1 to its Southwest corner having Coordinates of X = 1,205,385.83 and Y = 379,032.19; thence North 11 degrees 27 minutes 42 seconds West 910.92 feet along the West boundary of said Block 1 to its Northwest corner having Coordinates of X = 1,205,204.82 and Y = 379,924.94; thence North 50 degrees 01 minutes 15 seconds East 11,941.24 feet to the Northeast corner of said Block 1 having Coordinates of X = 1,214,355.14 and Y = 387,597.29; thence South 8,565.10 feet along the East boundary of said Block 1 to the point of beginning, containing approximately **991.51 acres**, all as more particularly outlined on a plat on file in the Office of Mineral Resources, Department of Natural Resources. All bearings, distances and coordinates are based on Louisiana Coordinate System of 1927, (North or South Zone).

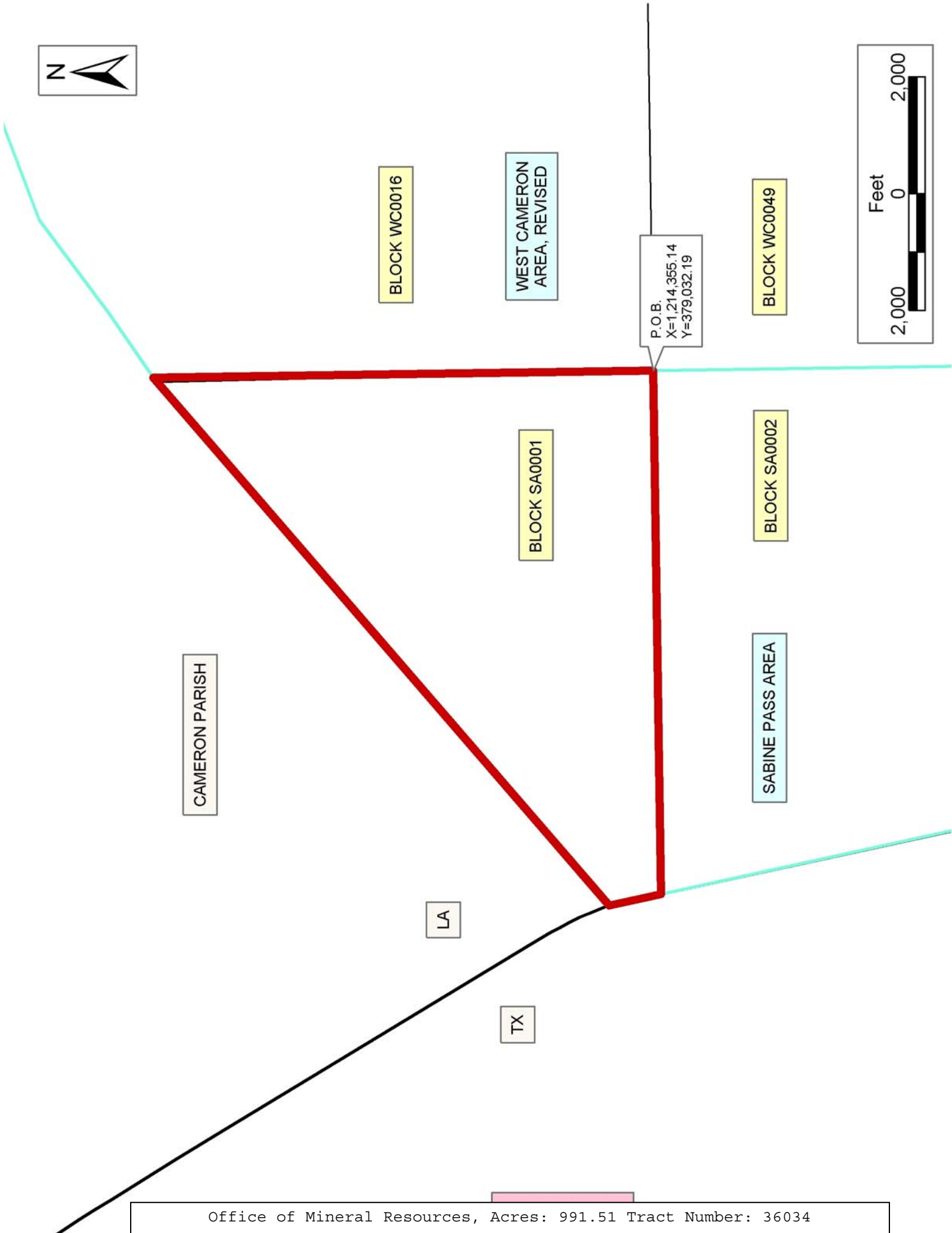
NOTE: The above description of the Tract nominated for lease has been provided and corrected, where required, exclusively by the nomination party. Any mineral lease selected from this Tract and awarded by the Louisiana State Mineral Board shall be without warranty of any kind, either express, implied, or statutory, including, but not limited to, the implied warranties of merchantability and fitness for a particular purpose. Should the mineral lease awarded by the Louisiana State Mineral Board be subsequently modified, cancelled or abrogated due to the existence of conflicting leases, operating agreements, private claims or other future obligations or conditions which may affect all or any portion of the leased Tract, it shall not relieve the Lessee of the obligation to pay any bonus due thereon to the Louisiana State Mineral Board, nor shall the Louisiana State Mineral Board be obligated to refund any consideration paid by the Lessor prior to such modification, cancellation, or abrogation, including, but not limited to, bonuses, rentals and royalties.

NOTE: The State of Louisiana does hereby reserve, and this lease shall be subject to, the imprescriptible right of surface use in the nature of a servitude in favor of the Department of Natural Resources, including its Offices and Commissions, for the sole purpose of implementing, constructing, servicing and maintaining approved coastal zone management and/or restoration projects. Utilization of any and all rights derived under this lease by the mineral lessee, its agents, successors or assigns, shall not interfere with nor hinder the reasonable surface use by the Department of Natural Resources, its Offices or Commissions, as herein above reserved.

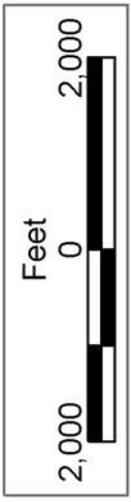
NOTE: It appears, according to our records, that a portion of this Tract is located within the restrictive safety fairway area as set out by the Corps of Engineers, U.S. Army and/or the restrictive anchorage area as set out by the U.S. Coast Guard.

Applicant: S. R. Verret

Bidder	Cash Payment	Price/Acre	Rental	Oil	Gas	Other



P.O.B.  
X=1,214,355.14  
Y=379,032.19



CAMERON PARISH

BLOCK WC00016

WEST CAMERON  
AREA, REVISED

BLOCK WC0049

BLOCK SA0001

BLOCK SA0002

SABINE PASS AREA

LA

TX

**TRACT 36035 - Portion of Block 2, Sabine Pass Area, Cameron Parish, Louisiana**

The beds and bottoms of all water bodies belonging to the State of Louisiana located in that portion of Block 2, Sabine Pass Area, together with any present lands formed by accretion to the shoreline, located in Cameron Parish, Louisiana, and not presently under mineral lease on February 11, 2004, the geographical area of which is more fully described as follows: Beginning at the Northeast corner of Block 2, Sabine Pass Area, having Coordinates of X = 1,214,355.14 and Y = 379,032.19; thence South 7,758.05 feet along the East boundary of said Block 2 to the Northeast corner of State Lease No. 16494 having Coordinates of X = 1,214,355.14 and Y = 371,274.14; thence along the Northern and Western boundaries of said State Lease No. 16494 the following courses: West 1,100.00 feet to a corner having Coordinates of X = 1,213,255.14 and Y = 371,274.14; South 840.00 feet to a corner having Coordinates of X = 1,213,255.14 and Y = 370,434.14; West 750.00 feet to a corner having Coordinates of X = 1,212,505.14 and Y = 370,434.14; South 1,600.00 feet to its Southwest corner, also being the Northwest corner of State Lease No. 16493 having Coordinates of X = 1,212,505.14 and Y = 368,834.14; thence South 4,560.00 feet along the West boundary of said State Lease No. 16493 to its Southwest corner on the South boundary of said Block 2 having Coordinates of X = 1,212,505.14 and Y = 364,274.14; thence West 4,126.49 feet along the said South boundary of Block 2 to its Southwest corner having Coordinates of X = 1,208,378.65 and Y = 364,274.14; thence North 11 degrees 27 minutes 49 seconds West 15,058.45 feet along the West boundary of said Block 2 to its Northwest corner having Coordinates of X = 1,205,385.83 and Y = 379,032.19; thence East 8,969.31 feet along the North boundary of said Block 2 to the point of beginning, containing approximately **2,248.98 acres**, all as more particularly outlined on a plat on file in the Office of Mineral Resources, Department of Natural Resources. All bearings, distances and coordinates are based on Louisiana Coordinate System of 1927, (North or South Zone).

NOTE: The above description of the Tract nominated for lease has been provided and corrected, where required, exclusively by the nomination party. Any mineral lease selected from this Tract and awarded by the Louisiana State Mineral Board shall be without warranty of any kind, either express, implied, or statutory, including, but not limited to, the implied warranties of merchantability and fitness for a particular purpose. Should the mineral lease awarded by the Louisiana State Mineral Board be subsequently modified, cancelled or abrogated due to the existence of conflicting leases, operating agreements, private claims or other future obligations or conditions which may affect all or any portion of the leased Tract, it shall not relieve the Lessee of the obligation to pay any bonus due thereon to the Louisiana State Mineral Board, nor shall the Louisiana State Mineral Board be obligated to refund any consideration paid by the Lessor prior to such modification, cancellation, or abrogation, including, but not limited to, bonuses, rentals and royalties.



NOTE: The State of Louisiana does hereby reserve, and this lease shall be subject to, the imprescriptible right of surface use in the nature of a servitude in favor of the Department of Natural Resources, including its Offices and Commissions, for the sole purpose of implementing, constructing, servicing and maintaining approved coastal zone management and/or restoration projects. Utilization of any and all rights derived under this lease by the mineral lessee, its agents, successors or assigns, shall not interfere with nor hinder the reasonable surface use by the Department of Natural Resources, its Offices or Commissions, as herein above reserved.

NOTE: It appears, according to our records, that a portion of this Tract is located within the restrictive safety fairway area as set out by the Corps of Engineers, U.S. Army and/or the restrictive anchorage area as set out by the U.S. Coast Guard.

Applicant: S. R. Verret

Bidder	Cash Payment	Price/Acre	Rental	Oil	Gas	Other



BLOCK WC0016

P.O.B.  
X=1,214,355.14  
Y=379,032.19

CAMERON PARISH

WEST CAMERON  
AREA, REVISED

SL 16495

BLOCK WC0049

SL 16494

SL 16493

BLOCK SA0001

SABINE PASS AREA

BLOCK SA0002

SL 16497

LA

US



**TRACT 36036 - Portion of Block 49, West Cameron Area, Revised, Cameron Parish, Louisiana**

The beds and bottoms of all water bodies belonging to the State of Louisiana located in that portion of Block 49, West Cameron Area, Revised, together with any present lands formed by accretion to the shoreline, located in Cameron Parish, Louisiana, and not presently under mineral lease on February 11, 2004, the geographical area of which is more fully described as follows: Beginning at the Northwest corner of Block 49, West Cameron Area, Revised, having Coordinates of X = 1,214,355.14 and Y = 379,032.19; thence East 7,379.02 feet along the North boundary of said Block 49 to a point having Coordinates of X = 1,221,734.16 and Y = 379,032.19; thence South 7,758.05 feet along the West boundary of State Lease No. 16575 to a point being the common corner between State Lease No. 16017, State Lease No. 16019 and said State Lease No. 16575 having Coordinates of X = 1,221,734.16 and Y = 371,274.14; thence West 2,879.02 feet along the North boundary of said State Lease No. 16017 to the Southeast corner of State Lease No. 16495 having Coordinates of X = 1,218,855.14 and Y = 371,274.14; thence North 960.00 feet along the East boundary of said State Lease No. 16495 to its Northeast corner having Coordinates of X = 1,218,855.14 and Y = 372,234.14; thence West 4,500.00 feet along the North boundary of said State Lease No. 16495 to its Northwest corner on the West boundary of said Block 49 having Coordinates of X = 1,214,355.14 and Y = 372,234.14; thence North 6,798.05 feet along the said West boundary of said Block 49 to the point of beginning, containing approximately **1,215.03 acres**, all as more particularly outlined on a plat on file in the Office of Mineral Resources, Department of Natural Resources. All bearings, distances and coordinates are based on Louisiana Coordinate System of 1927, (North or South Zone).

NOTE: The above description of the Tract nominated for lease has been provided and corrected, where required, exclusively by the nomination party. Any mineral lease selected from this Tract and awarded by the Louisiana State Mineral Board shall be without warranty of any kind, either express, implied, or statutory, including, but not limited to, the implied warranties of merchantability and fitness for a particular purpose. Should the mineral lease awarded by the Louisiana State Mineral Board be subsequently modified, cancelled or abrogated due to the existence of conflicting leases, operating agreements, private claims or other future obligations or conditions which may affect all or any portion of the leased Tract, it shall not relieve the Lessee of the obligation to pay any bonus due thereon to the Louisiana State Mineral Board, nor shall the Louisiana State Mineral Board be obligated to refund any consideration paid by the Lessor prior to such modification, cancellation, or abrogation, including, but not limited to, bonuses, rentals and royalties.

NOTE: The State of Louisiana does hereby reserve, and this lease shall be subject to, the imprescriptible right of surface use in the nature of a servitude in favor of the Department of Natural Resources, including its Offices and Commissions, for the sole purpose of implementing,

constructing, servicing and maintaining approved coastal zone management and/or restoration projects. Utilization of any and all rights derived under this lease by the mineral lessee, its agents, successors or assigns, shall not interfere with nor hinder the reasonable surface use by the Department of Natural Resources, its Offices or Commissions, as herein above reserved.

Applicant: S. R. Verret

Bidder	Cash Payment	Price/Acre	Rental	Oil	Gas	Other



BLOCK WC0016

CAMERON PARISH

WEST CAMERON  
AREA, REVISED

SL 16575

BLOCK WC0049

SL 16019



SL 16017

SL 16495

BLOCK SA0001

P.O.B.  
X=1,214,355.14  
Y=379,032.19

SABINE PASS AREA

BLOCK SA0002

**TRACT 36037 - Portion of Block 23, Breton Sound Area, Plaquemines Parish, Louisiana**

The beds and bottoms of all water bodies belonging to the State of Louisiana located in that portion of Block 23, Breton Sound Area, together with any present lands formed by accretion to the shoreline, located in Plaquemines Parish, Louisiana, and not presently under mineral lease on February 11, 2004, the geographical area of which is more fully described as follows: Beginning at a point being the Southeast corner of Block 23, Breton Sound Area having Coordinates of X = 2,738,600.00 and Y = 337,080.00; thence West 8,696.17 feet along the South line of said Block 23 to a point on the Coastline derived from the June 16, 1975 Decree in the United States vs. Louisiana No. 9 Original having Coordinates of X = 2,729,903.83 and Y = 337,080.00; thence North 37 degrees 15 minutes 00 seconds East 6,909.24 feet along said Coastline to a point also being the Southwest corner of State Lease No. 16258 as amended having Coordinates of X = 2,734,086.12 and Y = 342,580.00; thence along the Southern, Eastern, and Northern boundary of said State Lease No. 16258 the following courses: North 77 degrees 59 minutes 57 seconds East 2,161.07 feet to its Southeast corner having Coordinates of X = 2,736,200.00 and Y = 343,029.16 ; North 1,200.84 feet to its Northeast corner having Coordinates of X = 2,736,200.00 and Y = 344,230.00; North 70 degrees 40 minutes 53 seconds West 718.84 feet to its Northwest corner said point also being a point on said Coastline as defined having Coordinates of X = 2,735,521.63 and Y = 344,467.81; thence North 37 degrees 15 minutes 00 seconds East 5,085.74 feet along said Coastline to a point on the East line of Block 23 having Coordinates of X = 2,738,600.00 and Y = 348,516.07; thence South 11,436.07 to the point of beginning containing approximately **1,093.77 acres**, all as more particularly outlined on a plat on file in the Office of Mineral Resources, Department of Natural Resources. All bearings, distances and coordinates are based on Louisiana Coordinate System of 1927, (North or South Zone).

NOTE: The above description of the Tract nominated for lease has been provided and corrected, where required, exclusively by the nomination party. Any mineral lease selected from this Tract and awarded by the Louisiana State Mineral Board shall be without warranty of any kind, either express, implied, or statutory, including, but not limited to, the implied warranties of merchantability and fitness for a particular purpose. Should the mineral lease awarded by the Louisiana State Mineral Board be subsequently modified, cancelled or abrogated due to the existence of conflicting leases, operating agreements, private claims or other future obligations or conditions which may affect all or any portion of the leased Tract, it shall not relieve the Lessee of the obligation to pay any bonus due thereon to the Louisiana State Mineral Board, nor shall the Louisiana State Mineral Board be obligated to refund any consideration paid by the Lessor prior to such modification, cancellation, or abrogation, including, but not limited to, bonuses, rentals and royalties.

NOTE: The State of Louisiana does hereby reserve, and this lease shall be subject to, the imprescriptible right of surface use in the nature of a servitude in favor of the Department of Natural Resources, including its Offices and Commissions, for the sole purpose of implementing, constructing, servicing and maintaining approved coastal zone management and/or restoration projects. Utilization of any and all rights derived under this lease by the mineral lessee, its agents, successors or assigns, shall not interfere with nor hinder the reasonable surface use by the Department of Natural Resources, its Offices or Commissions, as herein above reserved.

Applicant: Stephen M. Jenkins, Inc.

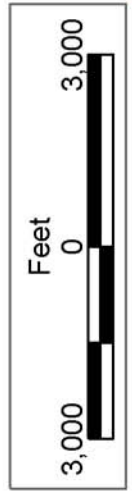
Bidder	Cash Payment	Price/Acre	Rental	Oil	Gas	Other



BLOCK BS0024

PLAQUEMINES PARISH

BLOCK BS0025



S.L. 17063

P.O.B.  
X=2,738,600.00  
Y=337,080.00

BLOCK BS0023

BLOCK BS0026

S.L. 16258

S.L. 16273

S.L. 17070

S.L. 16272

BRETON SOUND AREA

BLOCK BS0022

BLOCK BS0027

Coastline



**TRACT 36038 - Portion of Block 26, Breton Sound Area, Plaquemines Parish, Louisiana**

The beds and bottoms of all water bodies belonging to the State of Louisiana located in that portion of Block 26, Breton Sound Area, together with any present lands formed by accretion to the shoreline, located in Plaquemines Parish, Louisiana, and not presently under mineral lease on February 11, 2004, the geographical area of which is more fully described as follows: Beginning at a point being the Northeast corner of Block 26, Breton Sound Area having Coordinates of X = 2,738,600.00 and Y = 337,080.00; thence South 7,375.00 feet to a point on the East line of the said Block 26, having Coordinates of X = 2,738,600.00 and Y = 329,705.00; thence West 14,750.00 feet to a point on the West line of said Block 26 having Coordinates of X = 2,723,850.00 and Y = 329,705.00; thence North 1,034.83 feet along the West line of said Block 26 to a point on the Coastline derived from the June 16, 1975 Decree in the United States vs. Louisiana No. 9 Original and having Coordinates of X = 2,723,850.00 and Y = 330,739.83; thence along said Coastline the following courses: North 44 degrees 16 minutes 54 seconds East 179.04 feet to a point having Coordinates of X = 2,723,975.00 and Y = 330,868.00; North 52 degrees 09 minutes 29 seconds East 3,643.12 feet to a point having Coordinates of X = 2,726,852.00 and Y = 333,103.00; North 37 degrees 30 minutes 06 seconds East 5,013.00 feet to a point on the North line of said Block 26, having Coordinates of X = 2,729,903.83 and Y = 337,080.00; thence East 8,696.17 feet to the point of beginning, containing approximately **2,002.53 acres**, all as more particularly outlined on a plat on file in the Office of Mineral Resources, Department of Natural Resources. All bearings, distances and coordinates are based on Louisiana Coordinate System of 1927, (North or South Zone).

NOTE: The above description of the Tract nominated for lease has been provided and corrected, where required, exclusively by the nomination party. Any mineral lease selected from this Tract and awarded by the Louisiana State Mineral Board shall be without warranty of any kind, either express, implied, or statutory, including, but not limited to, the implied warranties of merchantability and fitness for a particular purpose. Should the mineral lease awarded by the Louisiana State Mineral Board be subsequently modified, cancelled or abrogated due to the existence of conflicting leases, operating agreements, private claims or other future obligations or conditions which may affect all or any portion of the leased Tract, it shall not relieve the Lessee of the obligation to pay any bonus due thereon to the Louisiana State Mineral Board, nor shall the Louisiana State Mineral Board be obligated to refund any consideration paid by the Lessor prior to such modification, cancellation, or abrogation, including, but not limited to, bonuses, rentals and royalties.

NOTE: The State of Louisiana does hereby reserve, and this lease shall be subject to, the imprescriptible right of surface use in the nature of a servitude in favor of the Department of Natural Resources, including its Offices and Commissions, for the sole purpose of implementing,

constructing, servicing and maintaining approved coastal zone management and/or restoration projects. Utilization of any and all rights derived under this lease by the mineral lessee, its agents, successors or assigns, shall not interfere with nor hinder the reasonable surface use by the Department of Natural Resources, its Offices or Commissions, as herein above reserved.

Applicant: Stephen M. Jenkins, Inc.

Bidder	Cash Payment	Price/Acre	Rental	Oil	Gas	Other

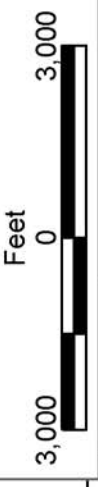


BLOCK BS0024

S.L. 17063

BLOCK BS0025

P.O.B.  
X=2,738,600.00  
Y=337,080.00



BLOCK BS0023

BLOCK BS0026

BRETON SOUND AREA

PLAQUEMINES PARISH

BLOCK BS0022

BLOCK BS0027

Coastline

**TRACT 36039 - Portion of Block 27, Breton Sound Area, Plaquemines Parish, Louisiana**

The beds and bottoms of all water bodies belonging to the State of Louisiana located in that portion of Block 27, Breton Sound Area, together with any present lands formed by accretion to the shoreline, located in Plaquemines Parish, Louisiana, and not presently under mineral lease on February 11, 2004, the geographical area of which is more fully described as follows: Beginning at a point being the Southeast corner of Block 27, Breton Sound Area having Coordinates of X = 2,723,850.00 and Y = 322,330.00; thence West 5,840.02 feet to a point on the Coastline derived from the June 16, 1975 Decree in the United States vs. Louisiana No. 9 Original having Coordinates of X = 2,718,009.98 and Y = 322,330.00; thence along said Coastline the following courses: North 31 degrees 07 minutes 15 seconds East 5,196.95 feet to a point having Coordinates of X = 2,720,696.00 and Y = 326,779.00; North 34 degrees 10 minutes 44 seconds East 2,892.59 feet to a point having Coordinates of X = 2,722,321.00 and Y = 329,172.00; North 44 degrees 16 minutes 54 seconds East 2,189.96 feet to a point on the East line of said Block 27 having Coordinates of X = 2,723,850.00 and Y = 330,739.83; thence South 8,409.83 feet to the point of beginning, containing approximately **615.45 acres**, all as more particularly outlined on a plat on file in the Office of Mineral Resources, Department of Natural Resources. All bearings, distances and coordinates are based on Louisiana Coordinate System of 1927, (North or South Zone).

NOTE: The above description of the Tract nominated for lease has been provided and corrected, where required, exclusively by the nomination party. Any mineral lease selected from this Tract and awarded by the Louisiana State Mineral Board shall be without warranty of any kind, either express, implied, or statutory, including, but not limited to, the implied warranties of merchantability and fitness for a particular purpose. Should the mineral lease awarded by the Louisiana State Mineral Board be subsequently modified, cancelled or abrogated due to the existence of conflicting leases, operating agreements, private claims or other future obligations or conditions which may affect all or any portion of the leased Tract, it shall not relieve the Lessee of the obligation to pay any bonus due thereon to the Louisiana State Mineral Board, nor shall the Louisiana State Mineral Board be obligated to refund any consideration paid by the Lessor prior to such modification, cancellation, or abrogation, including, but not limited to, bonuses, rentals and royalties.

NOTE: The State of Louisiana does hereby reserve, and this lease shall be subject to, the imprescriptible right of surface use in the nature of a servitude in favor of the Department of Natural Resources, including its Offices and Commissions, for the sole purpose of implementing, constructing, servicing and maintaining approved coastal zone management and/or restoration projects. Utilization of any and all rights derived under this lease by the mineral lessee, its agents, successors or assigns, shall not interfere with nor hinder the reasonable surface use by the

Department of Natural Resources, its Offices or Commissions, as herein above reserved.

Applicant: Stephen M. Jenkins, Inc.

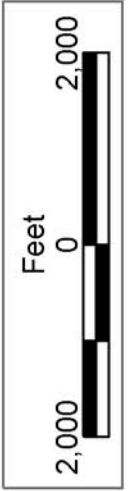
Bidder	Cash Payment	Price/Acre	Rental	Oil	Gas	Other



PLAQUEMINES PARISH

BLOCK BS0026

BLOCK BS0039



P.O.B.  
X=2,723,850.00  
Y=322,330.00

Coastline

BRETON SOUND AREA

BLOCK BS0027

BLOCK BS0038