

TRACT 35305 - STATE AGENCY - Beauregard Parish, Louisiana

Certain Tracts of lands, excluding the beds and bottoms of all navigable waters, belonging to and not presently under mineral lease from the Beauregard Parish Police Jury on February 12, 2003, being more fully described as follows: Beginning at a point having Coordinates of X = 1,401,560.00 and Y = 654,810.00; thence South 88 degrees 37 minutes 23 seconds East 6,866.98 feet to a point having Coordinates of X = 1,408,425.00 and Y = 654,645.00; thence South 01 degrees 05 minutes 09 seconds West 6,596.18 feet to a point having Coordinates of X = 1,408,300.00 and Y = 648,050.00; thence North 88 degrees 34 minutes 46 seconds West 6,857.11 feet to a point having Coordinates of X = 1,401,445.00 and Y = 648,220.00; thence North 00 degrees 59 minutes 59 seconds East 6,591.00 feet to the point of beginning, containing approximately **25.40 acres**, containing acres, all as more particularly outlined on a plat on file in the Office of Mineral Resources, Department of Natural Resources, as provided by the applicant. All distances, bearing and coordinates, if applicable, are based on the Louisiana Coordinate System of 1927, (North or South Zone).

NOTE: The above description of the Tract nominated for lease has been provided and corrected, where required, exclusively by the nomination party. Any mineral lease selected from this Tract and awarded by the Louisiana State Mineral Board shall be without warranty of any kind, either express, implied, or statutory, including, but not limited to, the implied warranties of merchantability and fitness for a particular purpose. Should the mineral lease awarded by the Louisiana State Mineral Board be subsequently modified, cancelled or abrogated due to the existence of conflicting leases, operating agreements, private claims or other future obligations or conditions which may affect all or any portion of the leased Tract, it shall not relieve the Lessee of the obligation to pay any bonus due thereon to the Louisiana State Mineral Board, nor shall the Louisiana State Mineral Board be obligated to refund any consideration paid by the Lessor prior to such modification, cancellation, or abrogation, including, but not limited to, bonuses, rentals and royalties.

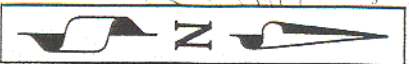
Applicant: Sterling Petroleum Properties to Agency and by Resolution from the Beauregard Parish Police Jury authorizing the Mineral Board to act in its behalf.

Bidder	Cash Payment	Price / Acre	Rental	Oil	Gas	Other

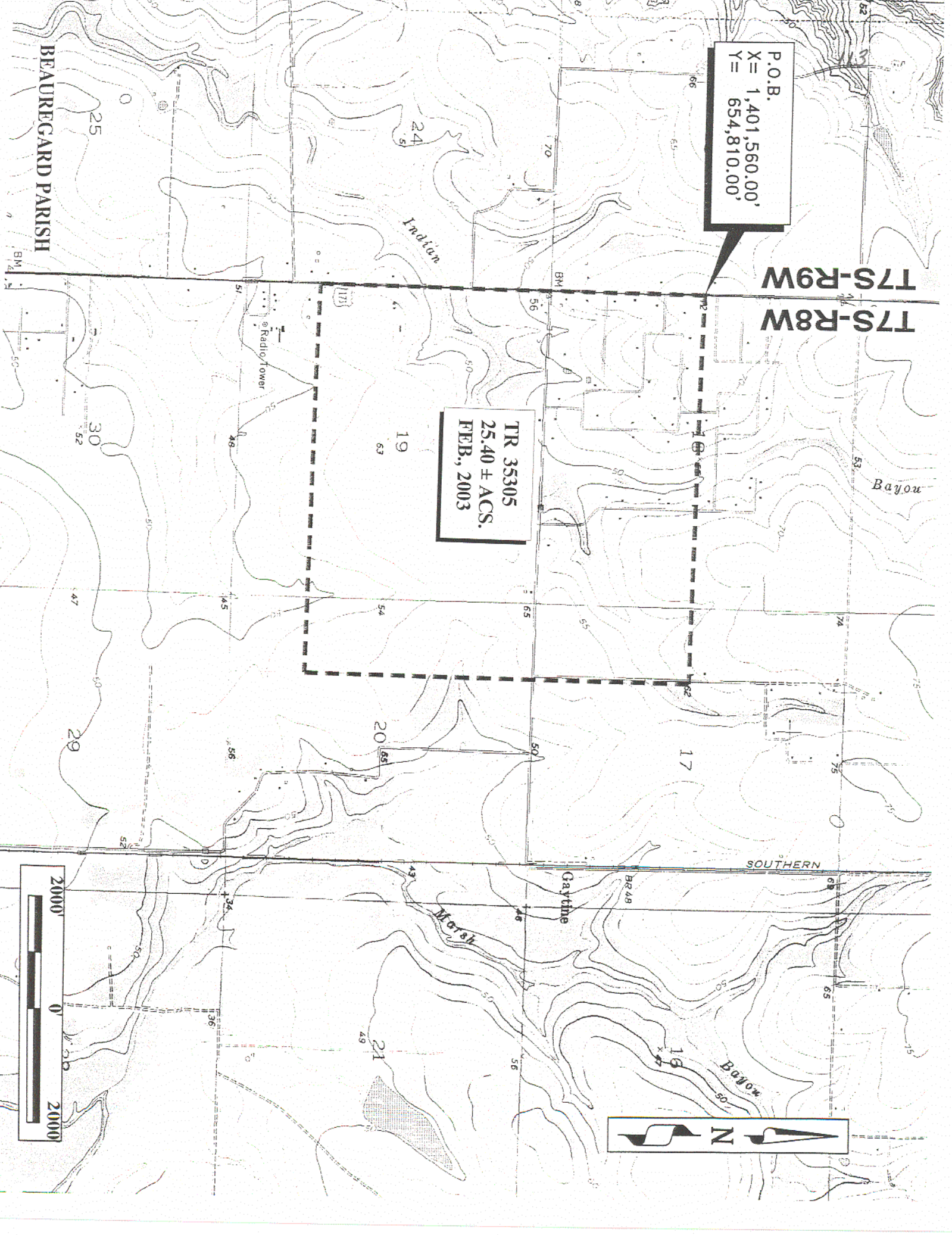
P.O.B.
X= 1,401,560.00'
Y= 654,810.00'

T7S-R9W
T7S-R8W

TR 35305
25.40 ± ACS.
FEB., 2003



BEAUREGARD PARISH



TRACT 35306 - STATE AGENCY - Vernon Parish, Louisiana

A certain Tract of land, excluding the beds and bottoms of all navigable waters, belonging to and not presently under mineral lease from the Vernon Parish Police Jury on February 12, 2003, being more fully described as follows: A certain tract of land situated in Sections 25, 26, 35 & 36, Township 1 South, Range 6 West, Vernon Parish, Louisiana, being more fully described as follows: All dedicated public roads situated in the above said sections of said township and range, also being that portion situated within the confines of the AUS C RA SUI, Pitkin Field, created by the Office of Conservation Order No. 1412-A-4, including, but not limited to, Parish Road 5141, Hill Street, Royce Street, Bo Loop, Railroad Street, George Street and Second Street, containing **15 acres**, all as more particularly outlined on a plat on file in the Office of Mineral Resources, Department of Natural Resources, as provided by the applicant. All distances, bearing and coordinates, if applicable, are based on the Louisiana Coordinate System of 1927, (North or South Zone).

NOTE: The above description of the Tract nominated for lease has been provided and corrected, where required, exclusively by the nomination party. Any mineral lease selected from this Tract and awarded by the Louisiana State Mineral Board shall be without warranty of any kind, either express, implied, or statutory, including, but not limited to, the implied warranties of merchantability and fitness for a particular purpose. Should the mineral lease awarded by the Louisiana State Mineral Board be subsequently modified, cancelled or abrogated due to the existence of conflicting leases, operating agreements, private claims or other future obligations or conditions which may affect all or any portion of the leased Tract, it shall not relieve the Lessee of the obligation to pay any bonus due thereon to the Louisiana State Mineral Board, nor shall the Louisiana State Mineral Board be obligated to refund any consideration paid by the Lessor prior to such modification, cancellation, or abrogation, including, but not limited to, bonuses, rentals and royalties.

Applicant: Clayton Petroleum, Ltd. to Agency and by Resolution from the Vernon Parish Police Jury authorizing the Mineral Board to act in its behalf.

Bidder	Cash Payment	Price / Acre	Rental	Oil	Gas	Other

TR 35306
15 ± ACS.
FEB., 2003

VERNON PARISH
SCALE: 1" = 2,000'
Sections 25, 26, 35 & 36
Township 1 South - Range 6 West
within
AUS C RA SUI - Pitkin Field