

TRACT 35271 - Portion of Block 16, Vermilion Area, Revised, Vermilion Parish, Louisiana

That portion of Block 16, Vermilion Area, Revised, Vermilion Parish, Louisiana, belonging to the State of Louisiana and not presently under mineral lease on February 12, 2003, being more fully described as follows: Beginning at the Northeast corner of Block 16 having Coordinates of X = 1,662,140.22 and Y = 317,582.82; thence South 13,549.69 feet on the East line of said Block 16 to a point having Coordinates of X = 1,662,140.22 and Y = 304,033.13; thence Northwesterly on a straight line to a point having Coordinates of X = 1,661,678 and Y = 304,151; thence Northwesterly on a straight line to a point having Coordinates of X = 1,659,494 and Y = 304,616; thence Northwesterly on an arc having a radius of 18,240.60 feet and a center at X = 1,663,290 and Y = 322,457 to a point having Coordinates of X = 1,659,476 and Y = 304,620; thence Northwesterly on a straight line to a point having Coordinates of X = 1,658,120 and Y = 304,910; thence Northwesterly on an arc having a radius of 18,240.60 feet and a center at X = 1,658,887 and Y = 323,134 to a point having Coordinates of X = 1,656,354 and Y = 305,070; thence Northwesterly on an arc having a radius of 18,240.60 feet and a center at X = 1,655,896 and Y = 323,305 to a point having Coordinates of X = 1,652,650 and Y = 305,356; thence Northwesterly on a straight line to a point having Coordinates of X = 1,650,184 and Y = 305,802; thence Northwesterly on an arc having a radius of 18,240.60 feet and a center at X = 1,653,430 and Y = 323,751 to a point having Coordinates of X = 1,648,635 and Y = 306,152; thence Northwesterly on a straight line to a point on the West line of said Block 16, also being the Southwest corner of State Lease No. 17159 having Coordinates of X = 1,647,382.17 and Y = 306,493.68; thence along the boundary of said State Lease No. 17159 the following courses: North 68 degrees 16 minutes 01 seconds East 9,658.35 feet and North 3,721.90 feet to its Northeast corner, also being a point on the Southern boundary of State Lease No. 3763, as amended, having Coordinates of X = 1,656,354.00 and Y = 313,791.90; thence along the Southern boundary of said State Lease No. 3763 the following courses: North 56 degrees 25 minutes 24 seconds East 1,047.66 feet, North 87 degrees 18 minutes 26 seconds East 596.22 feet, North 58 degrees 44 minutes 03 seconds East 1,687.27 feet, North 59 degrees 16 minutes 15 seconds East 1,025.81 feet, North 54 degrees 35 minutes 36 seconds East 780.63 feet, North 50 degrees 50 minutes 26 seconds East 743.10 and North 20 degrees 42 minutes 30 seconds East 921.63 feet to its Northeast corner, also being a point on the North line of said Block 16 having Coordinates of X = 1,661,684.76 and Y = 317,582.82; thence East 455.46 feet to the point of beginning, containing approximately **1,991.84 acres, LESS AND EXCEPT** that portion thereof, if any, lying seaward of the line three nautical miles from the coast line of Louisiana, as said three mile line has been decreed by the Supreme Court of the United States, as determined by a Special Master appointed therein, in litigation styled **United States v. State of Louisiana et al No. 9 Original**, in 1975, all as more particularly outlined on a plat on file in the Office of Mineral Resources, Department of Natural Resources, as provided by the applicant. All bearings, distances and coordinates are based on Louisiana Coordinate System of 1927, (North or South Zone).

NOTE: The above description of the Tract nominated for lease has been provided and corrected, where required, exclusively by the nomination party. Any mineral lease selected from this Tract and awarded by the Louisiana State Mineral Board shall be without warranty of any kind, either express, implied, or statutory, including, but not limited to, the implied warranties of merchantability and fitness for a particular purpose. Should the mineral lease awarded by the Louisiana State Mineral Board be subsequently modified, cancelled or abrogated due to the existence of conflicting leases, operating agreements, private claims or other future obligations or conditions which may affect all or any portion of the leased Tract, it shall not relieve the Lessee of the obligation to pay any bonus due thereon to the Louisiana State Mineral Board, nor shall the Louisiana State Mineral Board be obligated to refund any consideration paid by the Lessor prior to such modification, cancellation, or abrogation, including, but not limited to, bonuses, rentals and royalties.

NOTE: The State of Louisiana does hereby reserve, and this lease shall be subject to, the imprescriptible right of surface use in the nature of a servitude in favor of the Department of Natural Resources, including its Offices and Commissions, for the sole purpose of implementing, constructing, servicing and maintaining approved coastal zone management and/or restoration projects. Utilization of any and all rights derived under this lease by the mineral lessee, its agents, successors or assigns, shall not interfere with nor hinder the reasonable surface use by the Department of Natural Resources, its Offices or Commissions, as herein above reserved.

Applicant: Oil and Gas Interests, Inc.

Bidder	Cash Payment	Price / Acre	Rental	Oil	Gas	Other

BIK. 4

SL 3842,
As Amended

BIK. 5

P.O.B.
X = 1,662,140.22
Y = 317,582.82

SL 3624,
As Amended

BIK. 6

SL 3763, As Amended

BIK. 14

SL 17159

BIK. 16

TR 35271
1,991.84 ± ACS.
FEB., 2003

BIK. 15

SL 15040,
As Amended

LA

US

BIK. 24

BIK. 25

VERMILION AREA, REVISED

BIK. 26

GULF OF MEXICO

Vermilion Parish, Louisiana

4000' 0' 4000'

NAD 27
LAMBERT LA. SOUTH ZONE

TRACT 35272 - Portion of Block 13, South Timbalier Area, Revised, Terrebonne Parish, Louisiana

That portion of Block 13, South Timbalier Area, Revised, Terrebonne Parish, Louisiana, belonging to the State of Louisiana and not presently under mineral lease on February 12, 2003, being more fully described as follows: Beginning at the Southeast corner of Block 13, South Timbalier Area, Revised, having Coordinates of X = 2,275,580.02 and Y = 134,330.00; thence North along the East line of said Block 13 a distance of 8,615.03 feet to a point on the Shoreline as set out in the June 1975 Decree of the Supreme Court, said point having Coordinates of X = 2,275,580.02 and Y = 142,945.03; thence Southeast along said Shoreline the following courses: South 75 degrees 25 minutes 56 seconds East a distance of 5,808.72 feet to a point having Coordinates of X = 2,281,202.00 and Y = 141,484.00; thence South 79 degrees 16 minutes 26 seconds East a distance of 5,292.47 feet having Coordinates of X = 2,286,402.00 and Y = 140,499.00; thence South 82 degrees 52 minutes 15 seconds East a distance of 3,966.73 feet to a point on the Eastern line of said Block 13 having Coordinates of X = 2,290,338.06 and Y = 140,006.70; thence South a distance of 5,676.70 feet to a point on the Southeast corner of said Block 13 having Coordinates of X = 2,290,338.06 and Y = 134,330.00, also being the Southwest corner of Block 14 and Northwest corner of Block 18 and Northeast corner of Block 17; thence West along Southern line of said Block 13 a distance of 14,758.04 feet to the point of beginning, containing approximately **2,348.00 acres**, all as more particularly outlined on a plat on file in the Office of Mineral Resources, Department of Natural Resources, as provided by the applicant. All bearings, distances and coordinates are based on Louisiana Coordinate System of 1927, (North or South Zone).

NOTE: The above description of the Tract nominated for lease has been provided and corrected, where required, exclusively by the nomination party. Any mineral lease selected from this Tract and awarded by the Louisiana State Mineral Board shall be without warranty of any kind, either express, implied, or statutory, including, but not limited to, the implied warranties of merchantability and fitness for a particular purpose. Should the mineral lease awarded by the Louisiana State Mineral Board be subsequently modified, cancelled or abrogated due to the existence of conflicting leases, operating agreements, private claims or other future obligations or conditions which may affect all or any portion of the leased Tract, it shall not relieve the Lessee of the obligation to pay any bonus due thereon to the Louisiana State Mineral Board, nor shall the Louisiana State Mineral Board be obligated to refund any consideration paid by the Lessor prior to such modification, cancellation, or abrogation, including, but not limited to, bonuses, rentals and royalties.

NOTE: The Department of Wildlife and Fisheries has designated certain areas in the coastal waters of the State of Louisiana as Oyster Seed Bed Areas. The exact location of those Seed Bed Areas must be obtained from the Department of Wildlife and Fisheries and any work done under a mineral lease from the State of Louisiana may necessarily be conducted in

conformity with the rules and regulations promulgated by the said Department of Wildlife and Fisheries for Oyster Seed Bed Areas.

NOTE: The State of Louisiana does hereby reserve, and this lease shall be subject to, the imprescriptible right of surface use in the nature of a servitude in favor of the Department of Natural Resources, including its Offices and Commissions, for the sole purpose of implementing, constructing, servicing and maintaining approved coastal zone management and/or restoration projects. Utilization of any and all rights derived under this lease by the mineral lessee, its agents, successors or assigns, shall not interfere with nor hinder the reasonable surface use by the Department of Natural Resources, its Offices or Commissions, as herein above reserved.

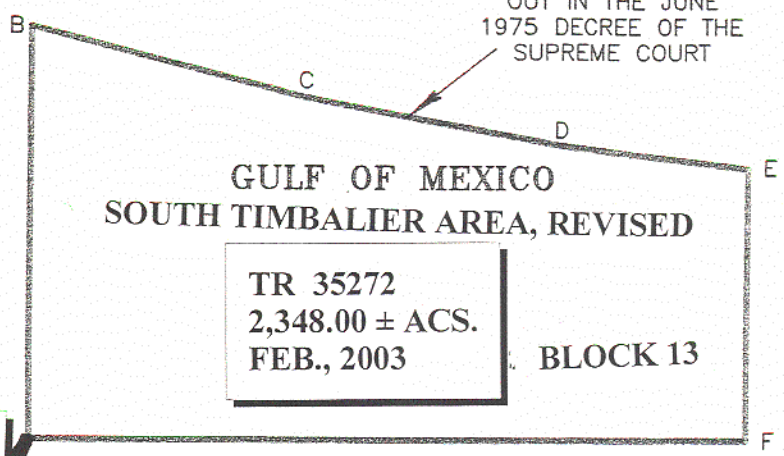
Applicant: Morris P. Hebert, Inc.

Bidder	Cash Payment	Price / Acre	Rental	Oil	Gas	Other

LOUISIANA COORDINATE SYSTEM
(1927 SOUTH ZONE)



SHORELINE AS SET
OUT IN THE JUNE
1975 DECREE OF THE
SUPREME COURT



GULF OF MEXICO
SOUTH TIMBALIER AREA, REVISED

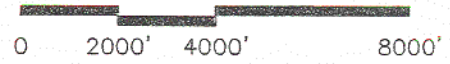
TR 35272
2,348.00 ± ACS.
FEB., 2003

BLOCK 13

P.O.B.
X = 2,275,580.02
Y = 134,330.00

TERREBONNE PARISH

GRAPHIC SCALE



NOTE: UNLESS OTHERWISE NOTED
COORDINATES ARE BASED ON NAD27.

NOTE:
NAD83 COORDINATES WERE CONVERTED
TO/FROM NAD27 COORDINATES USING THE
CORPSCON SOFTWARE FROM THE U.S.
ARMY TOPOGRAPHIC ENGINEERING CENTER.

BLOCK 13, SOUTH TIMBALIER AREA, REVISED
GULF OF MEXICO
TERREBONNE PARISH, LOUISIANA

SCALE: 1"=4000'

TRACT 35273 - Portion of Block 17, South Timbalier Area, Revised, Terrebonne Parish, Louisiana

That portion of Block 17, South Timbalier Area, Revised, Terrebonne Parish, Louisiana, belonging to the State of Louisiana and not presently under mineral lease on February 12, 2003, being more fully described as follows: Beginning at a point at the Northwest corner of Block 17, South Timbalier Area, Revised, having Coordinates of X = 2,275,580.02 and Y = 134,330.00; thence East along Northern line of said Block 17 for a distance of 14,758.04 feet to a point having Coordinates of X = 2,290,338.06 and Y = 134,330.00, also being the Northwestern corner of said Block 18 and Southeastern corner of Block 13 and Southwestern corner of Block 14; thence South a distance of 7,379.03 feet along the Eastern line of said Block 17 to a point having Coordinates of X = 2,290,338.06 and Y = 126,950.97; thence West a distance of 14,758.04 feet to a point having Coordinates of X = 2,275,580.02 and Y = 126,950.97; thence North along Western line of said Block 17 a distance of 7,379.03 feet to the point of beginning, containing approximately **2,500.00 acres**, all as more particularly outlined on a plat on file in the Office of Mineral Resources, Department of Natural Resources, as provided by the applicant. All bearings, distances and coordinates are based on Louisiana Coordinate System of 1927, (North or South Zone).

NOTE: The above description of the Tract nominated for lease has been provided and corrected, where required, exclusively by the nomination party. Any mineral lease selected from this Tract and awarded by the Louisiana State Mineral Board shall be without warranty of any kind, either express, implied, or statutory, including, but not limited to, the implied warranties of merchantability and fitness for a particular purpose. Should the mineral lease awarded by the Louisiana State Mineral Board be subsequently modified, cancelled or abrogated due to the existence of conflicting leases, operating agreements, private claims or other future obligations or conditions which may affect all or any portion of the leased Tract, it shall not relieve the Lessee of the obligation to pay any bonus due thereon to the Louisiana State Mineral Board, nor shall the Louisiana State Mineral Board be obligated to refund any consideration paid by the Lessor prior to such modification, cancellation, or abrogation, including, but not limited to, bonuses, rentals and royalties.

NOTE: The State of Louisiana does hereby reserve, and this lease shall be subject to, the imprescriptible right of surface use in the nature of a servitude in favor of the Department of Natural Resources, including its Offices and Commissions, for the sole purpose of implementing, constructing, servicing and maintaining approved coastal zone management and/or restoration projects. Utilization of any and all rights derived under this lease by the mineral lessee, its agents, successors or assigns, shall not interfere with nor hinder the reasonable surface use by the Department of Natural Resources, its Offices or Commissions, as herein above reserved.

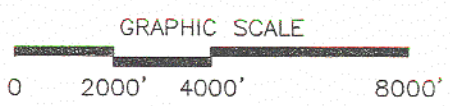
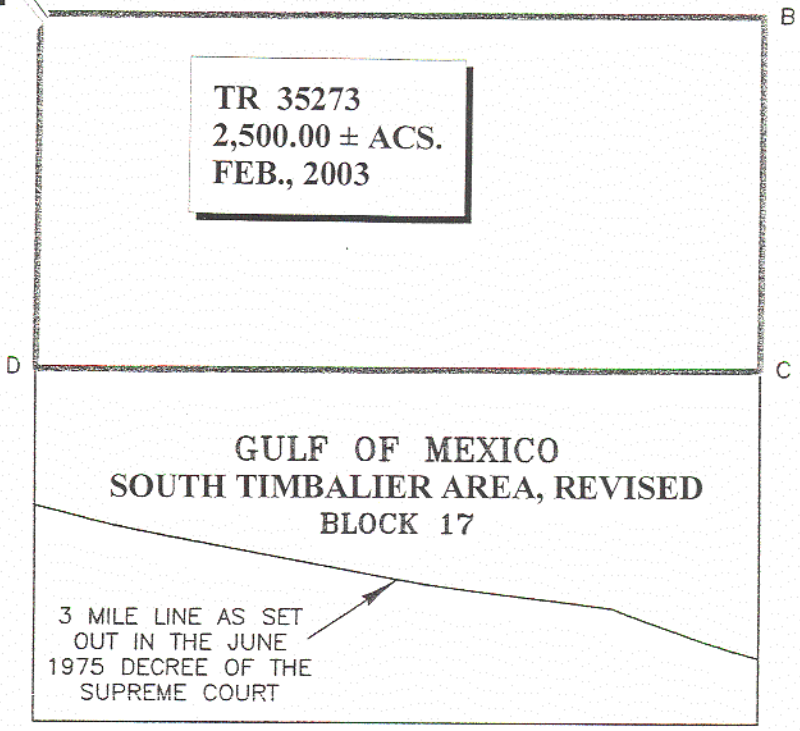
Applicant: Morris P. Hebert, Inc.

Bidder	Cash Payment	Price / Acre	Rental	Oil	Gas	Other

P.O.B.
X = 2,275,580.02
Y = 134,330.00

LOUISIANA COORDINATE SYSTEM
(1927 SOUTH ZONE)

TR 35273
2,500.00 ± ACS.
FEB., 2003



NOTE: UNLESS OTHERWISE NOTED
COORDINATES ARE BASED ON NAD27.

NOTE:
NAD83 COORDINATES WERE CONVERTED
TO/FROM NAD27 COORDINATES USING THE
CORPSCON SOFTWARE FROM THE U.S.
ARMY TOPOGRAPHIC ENGINEERING CENTER.

NO.	DATE	REVISION
-----	------	----------

BLOCK 17, SOUTH TIMBALIER AREA, REVISED
GULF OF MEXICO
TERREBONNE PARISH, LOUISIANA

	SCALE: 1"=4000'

TRACT 35274 - Portion of Block 17, South Timbalier Area, Revised, Terrebonne Parish, Louisiana

That portion of Block 17, South Timbalier Area, Revised, Terrebonne Parish, Louisiana, belonging to the State of Louisiana and not presently under mineral lease on February 12, 2003, being more fully described as follows: Beginning at the Northwest corner of Block 17, South Timbalier Area, Revised, having Coordinates of X = 2,275,580.02 and Y = 134,330.00; thence South along the West line of said Block 17 a distance of 7,379.03 feet to a point having Coordinates of X = 2,275,580.02 and Y = 126,950.97; thence East a distance of 14,758.04 feet to a point on the Eastern line of said Block 17 having Coordinates of X = 2,290,338.06 and Y = 126,950.97; thence South along the East line of said Block 17 a distance of 5,997.14 feet to a point on the 3 Mile Line as set out in the June 1975 Decree of the Supreme Court, said point having Coordinates of X = 2,290,338.06 and Y = 120,953.84; thence Northwest along said 3 Mile Line the following courses: along a curve to the left with a chord bearing of North 71 degrees 43 minutes 57 seconds West a distance of 1,902.77 feet and a radius point having Coordinates of X = 2,295,144.00 and Y = 138,550.00 to a point having Coordinates of X = 2,288,532.00 and Y = 121,550.00; thence North 68 degrees 44 minutes 45 seconds West a distance of 816.54 feet to a point having Coordinates of X = 2,287,771.00 and Y = 121,846.00; thence North 68 degrees 08 minutes 37 seconds West a distance of 386.80 feet to a point having Coordinates of X = 2,287,412.00 and Y = 121,990.00; thence North 82 degrees 52 minutes 45 seconds West a distance of 3,299.45 to a point having Coordinates of X = 2,284,138.00 and Y = 122,399.00; thence along a curve to the left with a chord bearing of North 81 degrees 03 minutes 22 seconds West a distance of 1,145.11 feet and a radius point having Coordinates of X = 2,286,402.00 and Y = 140,499.00 to a point having Coordinates of X = 2,283,007.00 and Y = 122,577.00; thence North 79 degrees 16 minutes 26 seconds West a distance of 5,292.47 feet having Coordinates of X = 2,277,807.00 and Y = 123,562.00; thence along a curve to the left with a chord bearing of North 77 degrees 20 minutes 21 seconds West a distance of 1,222.96 feet and a radius point having Coordinates of X = 2,281,202.00 and Y = 141,484.00 to a point having Coordinates of X = 2,276,614.00 and Y = 123,830.00; thence North 75 degrees 25 minutes 56 seconds West a distance of 1,068.33 feet to a point on the Western line of said Block 17 having Coordinates of X = 2,275,580.02 and Y = 124,098.71; thence North along the Western line of said Block 17 a distance of 2,852.26 feet to the point of beginning, containing approximately **1,467.38 acres, LESS AND EXCEPT** that portion thereof, if any, lying seaward of the line three nautical miles from the coast line of Louisiana, as said three mile line has been decreed by the Supreme Court of the United States, as determined by a Special Master appointed therein, in litigation styled **United States v. State of Louisiana et al No. 9 Original**, in 1975, all as more particularly outlined on a plat on file in the Office of Mineral Resources, Department of Natural Resources, as provided by the applicant. All bearings, distances and coordinates are based on Louisiana Coordinate System of 1927, (North or South Zone).

NOTE: The above description of the Tract nominated for lease has been provided and corrected, where required, exclusively by the nomination party. Any mineral lease selected from this Tract and awarded by the Louisiana State Mineral Board shall be without warranty of any kind, either express, implied, or statutory, including, but not limited to, the implied warranties of merchantability and fitness for a particular purpose. Should the mineral lease awarded by the Louisiana State Mineral Board be subsequently modified, cancelled or abrogated due to the existence of conflicting leases, operating agreements, private claims or other future obligations or conditions which may affect all or any portion of the leased Tract, it shall not relieve the Lessee of the obligation to pay any bonus due thereon to the Louisiana State Mineral Board, nor shall the Louisiana State Mineral Board be obligated to refund any consideration paid by the Lessor prior to such modification, cancellation, or abrogation, including, but not limited to, bonuses, rentals and royalties.

NOTE: The State of Louisiana does hereby reserve, and this lease shall be subject to, the imprescriptible right of surface use in the nature of a servitude in favor of the Department of Natural Resources, including its Offices and Commissions, for the sole purpose of implementing, constructing, servicing and maintaining approved coastal zone management and/or restoration projects. Utilization of any and all rights derived under this lease by the mineral lessee, its agents, successors or assigns, shall not interfere with nor hinder the reasonable surface use by the Department of Natural Resources, its Offices or Commissions, as herein above reserved.

Applicant: Morris P. Hebert, Inc.

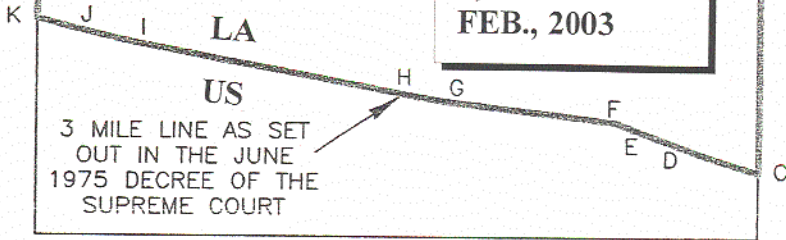
Bidder	Cash Payment	Price / Acre	Rental	Oil	Gas	Other

LOUISIANA COORDINATE SYSTEM
(1927 SOUTH ZONE)

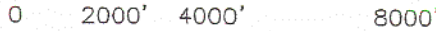
GULF OF MEXICO SOUTH TIMBALIER AREA, REVISED BLOCK 17

P.O.B.
X = 2,275,580.02
Y = 126,950.97

TR 35274
1,467.38 ± ACS.
FEB., 2003



GRAPHIC SCALE



NOTE: UNLESS OTHERWISE NOTED
COORDINATES ARE BASED ON NAD27.

NOTE:
NAD83 COORDINATES WERE CONVERTED
TO/FROM NAD27 COORDINATES USING THE
CORPSCON SOFTWARE FROM THE U.S.
ARMY TOPOGRAPHIC ENGINEERING CENTER.

BLOCK 17, SOUTH TIMBALIER AREA, REVISED
GULF OF MEXICO
TERREBONNE PARISH, LOUISIANA

SCALE: 1"=4000'

TRACT 35275 - Portion of Block 18, South Timbalier Area, Revised, Lafourche and Terrebonne Parishes, Louisiana

That portion of Block 18, South Timbalier Area, Revised, Lafourche and Terrebonne Parishes, Louisiana, belonging to the State of Louisiana and not presently under mineral lease on February 12, 2003, being more fully described as follows: Beginning at a point at the Northwest corner of Block 18, South Timbalier Area, Revised, having Coordinates of X = 2,290,338.06 and Y = 134,330.00; thence East along Northern line of said Block 18 for a distance of 14,758.04 feet to a point having Coordinates of X = 2,305,096.10 and Y = 134,330.00, also being the Western line of Block 19 and Southeastern corner of Block 14; thence South a distance of 7,379.03 feet along the Eastern line of said Block 18 to a point having Coordinates of X = 2,305,096.10 and Y = 126,950.97; thence West a distance of 14,758.04 feet to a point having Coordinates of X = 2,290,338.06 and Y = 126,950.97; thence North along Western line of said Block 18 a distance of 7,379.03 feet to a point of beginning, containing approximately **2,500.00 acres**, all as more particularly outlined on a plat on file in the Office of Mineral Resources, Department of Natural Resources, as provided by the applicant. All bearings, distances and coordinates are based on Louisiana Coordinate System of 1927, (North or South Zone).

NOTE: The above description of the Tract nominated for lease has been provided and corrected, where required, exclusively by the nomination party. Any mineral lease selected from this Tract and awarded by the Louisiana State Mineral Board shall be without warranty of any kind, either express, implied, or statutory, including, but not limited to, the implied warranties of merchantability and fitness for a particular purpose. Should the mineral lease awarded by the Louisiana State Mineral Board be subsequently modified, cancelled or abrogated due to the existence of conflicting leases, operating agreements, private claims or other future obligations or conditions which may affect all or any portion of the leased Tract, it shall not relieve the Lessee of the obligation to pay any bonus due thereon to the Louisiana State Mineral Board, nor shall the Louisiana State Mineral Board be obligated to refund any consideration paid by the Lessor prior to such modification, cancellation, or abrogation, including, but not limited to, bonuses, rentals and royalties.

NOTE: The State of Louisiana does hereby reserve, and this lease shall be subject to, the imprescriptible right of surface use in the nature of a servitude in favor of the Department of Natural Resources, including its Offices and Commissions, for the sole purpose of implementing, constructing, servicing and maintaining approved coastal zone management and/or restoration projects. Utilization of any and all rights derived under this lease by the mineral lessee, its agents, successors or assigns, shall not interfere with nor hinder the reasonable surface use by the Department of Natural Resources, its Offices or Commissions, as herein above reserved.

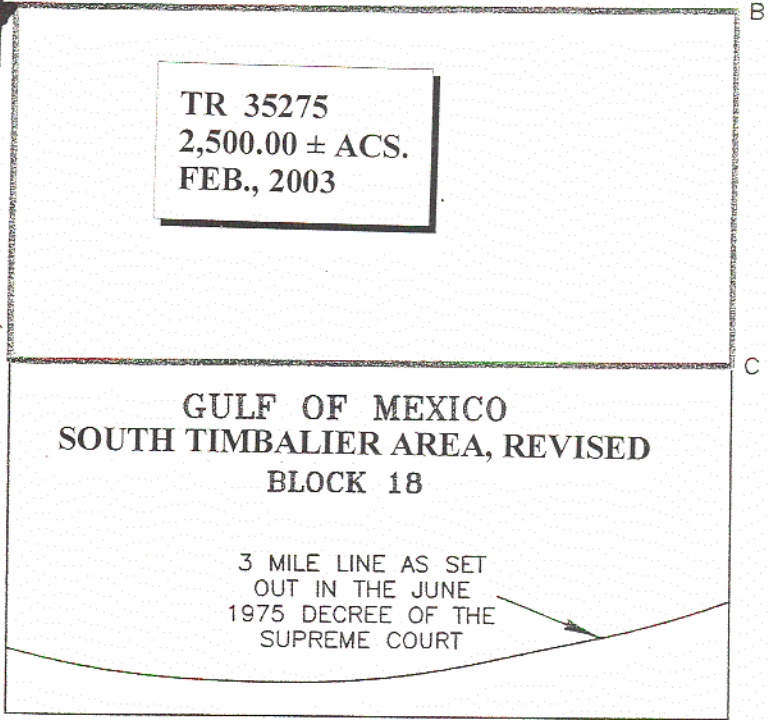
Applicant: Morris P. Hebert, Inc.

Bidder	Cash Payment	Price / Acre	Rental	Oil	Gas	Other

P.O.B.
X = 2,290,338.06
Y = 134,330.00

LOUISIANA COORDINATE SYSTEM
(1927 SOUTH ZONE)

TR 35275
2,500.00 ± ACS.
FEB., 2003



GRAPHIC SCALE



NOTE: UNLESS OTHERWISE NOTED
COORDINATES ARE BASED ON NAD27.

NOTE:
NAD83 COORDINATES WERE CONVERTED
TO/FROM NAD27 COORDINATES USING THE
CORPSCON SOFTWARE FROM THE U.S.
ARMY TOPOGRAPHIC ENGINEERING CENTER.

BLOCK 18, SOUTH TIMBALIER AREA, REVISED
GULF OF MEXICO
TERREBONNE & LAFOURCHE PARISHES

	SCALE: 1"=4000'

TRACT 35276 - Portion of Block 18, South Timbalier Area, Revised, Lafourche and Terrebonne Parishes, Louisiana

That portion of Block 18, South Timbalier Area, Revised, Lafourche and Terrebonne Parishes, Louisiana, belonging to the State of Louisiana and not presently under mineral lease on February 12, 2003, being more fully described as follows: Beginning at the Northwest corner of Block 18, South Timbalier Area, Revised, having Coordinates of X = 2,290,338.06 and Y = 134,330.00; thence South along the West line of said Block 18 a distance of 7,379.03 feet to a point having Coordinates of X = 2,290,338.06 and Y = 126,950.97; thence East a distance of 14,758.04 feet to a point on the Eastern line of said Block 18 having Coordinates of X = 2,305,096.10 and Y = 126,950.97; thence South along the East line of said Block 18 a distance of 4,898.88 feet to a point on the 3 Mile Line as set out in the June 1975 Decree of the Supreme Court, said point having Coordinates of X = 2,305,096.10 and Y = 122,052.09; thence West along said 3 Mile Line the following courses: along a curve to the left with a chord bearing of South 73 degrees 12 minutes 03 seconds West a distance of 2,725.86 feet and a radius point having Coordinates of X = 2,298,538.00 and Y = 139,073.00 to a point having Coordinates of X = 2,302,489.00 and Y = 121,265.00; thence South 77 degrees 29 minutes 26 seconds West a distance of 2,557.72 feet to a point having Coordinates of X = 2,299,992.00 and Y = 120,711.00; thence along a curve to the left with a chord bearing of South 84 degrees 44 minutes 12 seconds West a distance of 4,612.68 feet and a radius point having Coordinates of X = 2,296,041.00 and Y = 138,519.00 to a point having Coordinates of X = 2,295,411.00 and Y = 120,289.00; thence North 88 degrees 01 minutes 14 seconds West a distance of 897.54 feet having Coordinates of X = 2,294,514.00 and Y = 120,320.00; thence along a curve to the left with a chord bearing of North 81 degrees 22 minutes 10 seconds West a distance of 4,233.26 feet and a radius point having Coordinates of X = 2,295,144.00 and Y = 138,550.00 to a point on the Western line of said Block 18 and having Coordinates of X = 2,290,338.06 and Y = 120,953.84; thence North along the Western line of said Block 18 a distance of 5,997.14 feet to the point of beginning, containing approximately **2,099.48 acres, LESS AND EXCEPT** that portion thereof, if any, lying seaward of the line three nautical miles from the coast line of Louisiana, as said three mile line has been decreed by the Supreme Court of the United States, as determined by a Special Master appointed therein, in litigation styled **United States v. State of Louisiana et al No. 9 Original**, in 1975, all as more particularly outlined on a plat on file in the Office of Mineral Resources, Department of Natural Resources, as provided by the applicant. All bearings, distances and coordinates are based on Louisiana Coordinate System of 1927, (North or South Zone).

NOTE: The above description of the Tract nominated for lease has been provided and corrected, where required, exclusively by the nomination party. Any mineral lease selected from this Tract and awarded by the Louisiana State Mineral Board shall be without warranty of any kind, either express, implied, or statutory, including, but not limited to, the implied warranties of merchantability and fitness for a particular

purpose. Should the mineral lease awarded by the Louisiana State Mineral Board be subsequently modified, cancelled or abrogated due to the existence of conflicting leases, operating agreements, private claims or other future obligations or conditions which may affect all or any portion of the leased Tract, it shall not relieve the Lessee of the obligation to pay any bonus due thereon to the Louisiana State Mineral Board, nor shall the Louisiana State Mineral Board be obligated to refund any consideration paid by the Lessor prior to such modification, cancellation, or abrogation, including, but not limited to, bonuses, rentals and royalties.

NOTE: The State of Louisiana does hereby reserve, and this lease shall be subject to, the imprescriptible right of surface use in the nature of a servitude in favor of the Department of Natural Resources, including its Offices and Commissions, for the sole purpose of implementing, constructing, servicing and maintaining approved coastal zone management and/or restoration projects. Utilization of any and all rights derived under this lease by the mineral lessee, its agents, successors or assigns, shall not interfere with nor hinder the reasonable surface use by the Department of Natural Resources, its Offices or Commissions, as herein above reserved.

Applicant: Morris P. Hebert, Inc.

Bidder	Cash Payment	Price / Acre	Rental	Oil	Gas	Other

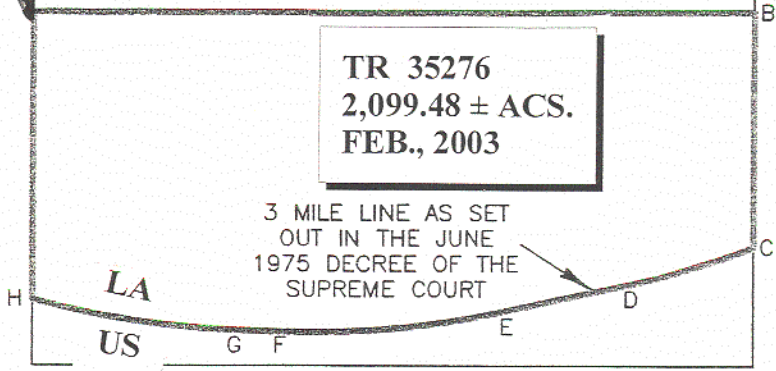
LOUISIANA COORDINATE SYSTEM
(1927 SOUTH ZONE)

GULF OF MEXICO SOUTH TIMBALIER AREA, REVISED BLOCK 18

P.O.B.
X = 2,290,338.06
Y = 126,950.97

TR 35276
2,099.48 ± ACS.
FEB., 2003

3 MILE LINE AS SET
OUT IN THE JUNE
1975 DECREE OF THE
SUPREME COURT



GRAPHIC SCALE



NOTE: UNLESS OTHERWISE NOTED
COORDINATES ARE BASED ON NAD27.

NOTE:
NAD83 COORDINATES WERE CONVERTED
TO/FROM NAD27 COORDINATES USING THE
CORPSCON SOFTWARE FROM THE U.S.
ARMY TOPOGRAPHIC ENGINEERING CENTER.

TERREBONNE & LAFOURCHE PARISHES

SCALE: 1"=4000'

TRACT 35277 - Portion of Block 45, Main Pass Area, Revised, Plaquemines Parish, Louisiana

That portion of Block 45, Main Pass Area, Revised, Plaquemines Parish, Louisiana, belonging to the State of Louisiana and not presently under mineral lease on February 12, 2003, being more fully described as follows: Beginning at a point having Coordinates of X = 2,679,600.00 and Y = 263,330.00, being the Southwest corner of Block 45, Main Pass Area, Revised; thence North 7,375.00 feet on the West line of said Block 45 to a point having Coordinates of X = 2,679,600.00 and Y = 270,705.00; thence East 14,750.00 feet to a point on the East line of said Block 45 having Coordinates of X = 2,694,350.00 and Y = 270,705.00; thence South 7,375.00 feet on the East line of said Block 45 to its Southeast corner having Coordinates of X = 2,694,350.00 and Y = 263,330.00; thence West 14,750.00 feet on the South line said Block 45 to its Southwest corner being the point of beginning, containing approximately **2,497.27 acres**, all as more particularly outlined on a plat on file in the Office of Mineral Resources, Department of Natural Resources, as provided by the applicant. All bearings, distances and coordinates are based on Louisiana Coordinate System of 1927, (North or South Zone).

NOTE: The above description of the Tract nominated for lease has been provided and corrected, where required, exclusively by the nomination party. Any mineral lease selected from this Tract and awarded by the Louisiana State Mineral Board shall be without warranty of any kind, either express, implied, or statutory, including, but not limited to, the implied warranties of merchantability and fitness for a particular purpose. Should the mineral lease awarded by the Louisiana State Mineral Board be subsequently modified, cancelled or abrogated due to the existence of conflicting leases, operating agreements, private claims or other future obligations or conditions which may affect all or any portion of the leased Tract, it shall not relieve the Lessee of the obligation to pay any bonus due thereon to the Louisiana State Mineral Board, nor shall the Louisiana State Mineral Board be obligated to refund any consideration paid by the Lessor prior to such modification, cancellation, or abrogation, including, but not limited to, bonuses, rentals and royalties.

NOTE: The State of Louisiana does hereby reserve, and this lease shall be subject to, the imprescriptible right of surface use in the nature of a servitude in favor of the Department of Natural Resources, including its Offices and Commissions, for the sole purpose of implementing, constructing, servicing and maintaining approved coastal zone management and/or restoration projects. Utilization of any and all rights derived under this lease by the mineral lessee, its agents, successors or assigns, shall not interfere with nor hinder the reasonable surface use by the Department of Natural Resources, its Offices or Commissions, as herein above reserved.

Applicant: Thomas Sharp

Bidder	Cash Payment	Price / Acre	Rental	Oil	Gas	Other

27

LOUISIANA COORDINATE SYSTEM (SOUTH ZONE)

Block 46

Block 45

Block 44

TR 35277
2,497.27 ± ACS.
FEB., 2003

P.O.B.

X = 2679600.00

Y = 263330.00

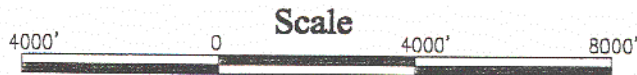
Block 53

Block 54

Block 55

Gulf of Mexico

**BLOCK 45
MAIN PASS AREA, REVISED
Plaquemines Parish, Louisiana**



TRACT 35278 - Portion of Block 54, Main Pass Area, Revised, Plaquemines Parish, Louisiana

That portion of Block 54, Main Pass Area, Revised, Plaquemines Parish, Louisiana, belonging to the State of Louisiana and not presently under mineral lease on February 12, 2003, being more fully described as follows: Beginning at a point having Coordinates of X = 2,694,350.00 and Y = 263,330.00, being the Northeast corner of Block 54, Main Pass Area, Revised; thence South 9,170.00 feet on the East line of said Block 54 to the Northeast corner of State Lease No. 16793 having Coordinates of X = 2,694,350.00 and Y = 254,160.00; thence West 2,034.00 feet on the North boundary of said State Lease No. 16793 to its Northwest corner having Coordinates of X = 2,692,316.00 and Y = 254,160.00; thence West 7,033.99 feet to point having Coordinates of X = 2,685,282.01 and Y = 254,160.00; thence North 9,170.00 feet to a point on the North line of said Block 54 having Coordinates of X = 2,685,282.01 and Y = 263,330.00; thence East 9,067.99 feet on the North line of said Block 54 to its Northeast corner being the point of beginning, containing approximately **1,908.94 acres**, all as more particularly outlined on a plat on file in the Office of Mineral Resources, Department of Natural Resources, as provided by the applicant. All bearings, distances and coordinates are based on Louisiana Coordinate System of 1927, (North or South Zone).

NOTE: The above description of the Tract nominated for lease has been provided and corrected, where required, exclusively by the nomination party. Any mineral lease selected from this Tract and awarded by the Louisiana State Mineral Board shall be without warranty of any kind, either express, implied, or statutory, including, but not limited to, the implied warranties of merchantability and fitness for a particular purpose. Should the mineral lease awarded by the Louisiana State Mineral Board be subsequently modified, cancelled or abrogated due to the existence of conflicting leases, operating agreements, private claims or other future obligations or conditions which may affect all or any portion of the leased Tract, it shall not relieve the Lessee of the obligation to pay any bonus due thereon to the Louisiana State Mineral Board, nor shall the Louisiana State Mineral Board be obligated to refund any consideration paid by the Lessor prior to such modification, cancellation, or abrogation, including, but not limited to, bonuses, rentals and royalties.

NOTE: The Department of Wildlife and Fisheries has designated certain areas in the coastal waters of the State of Louisiana as Oyster Seed Bed Areas. The exact location of those Seed Bed Areas must be obtained from the Department of Wildlife and Fisheries and any work done under a mineral lease from the State of Louisiana may necessarily be conducted in conformity with the rules and regulations promulgated by the said Department of Wildlife and Fisheries for Oyster Seed Bed Areas.

NOTE: The State of Louisiana does hereby reserve, and this lease shall be subject to, the imprescriptible right of surface use in the nature of a servitude in favor of the Department of Natural Resources, including its

Offices and Commissions, for the sole purpose of implementing, constructing, servicing and maintaining approved coastal zone management and/or restoration projects. Utilization of any and all rights derived under this lease by the mineral lessee, its agents, successors or assigns, shall not interfere with nor hinder the reasonable surface use by the Department of Natural Resources, its Offices or Commissions, as herein above reserved.

Applicant: Thomas Sharp

Bidder	Cash Payment	Price / Acre	Rental	Oil	Gas	Other

Block 46

Block 45

Block 44
30

P.O.B.

X = 2694350.00

Y = 263330.00

TR 35278
1,908.94 ± ACS.
FEB., 2003

Block 53

Block 54

Block 55

Block 85

SL1610

SL16793

SL16779

Block 84

Block 66

LOUISIANA COORDINATE SYSTEM (SOUTH ZONE)

**BLOCK 54
MAIN PASS AREA, REVISED
Plaquemines Parish, Louisiana**



TRACT 35279 - Portion of Block 44, Main Pass Area, Revised, Plaquemines Parish, Louisiana

That portion of Block 44, Main Pass Area, Revised, Plaquemines Parish, Louisiana, belonging to the State of Louisiana and not presently under mineral lease on February 12, 2003, being more fully described as follows: Beginning at a point having Coordinates of X = 2,694,350.00 and Y = 263,330.00, being the Southwest corner of Block 44, Main Pass Area, Revised; thence North 7,375.00 feet on the West line of said Block 44 to a point having Coordinates of X = 2,694,350.00 and Y = 270,705.00; thence East 4,525.58 feet to a point on the three mile line as set out in the June, 1975, decree of the Supreme Court having Coordinates of X = 2,698,875.58 and Y = 270,705.00; thence Southeasterly on a straight line to a point having Coordinates of X = 2,699,302 and Y = 266,715; thence Southeasterly along an arc having a radius of 18,240.60 feet and a center point having Coordinates of X = 2,688,235 and Y = 252,215 to a point having Coordinates of X = 2,702,697.99 and Y = 263,330.00; thence West 8,347.99 feet on the South line of said Block 44 to the point of beginning, containing approximately **962.45 acres, LESS AND EXCEPT** that portion thereof, if any, lying seaward of the line three nautical miles from the coast line of Louisiana, as said three mile line has been decreed by the Supreme Court of the United States, as determined by a Special Master appointed therein, in litigation styled **United States v. State of Louisiana et al No. 9 Original**, in 1975, all as more particularly outlined on a plat on file in the Office of Mineral Resources, Department of Natural Resources, as provided by the applicant. All bearings, distances and coordinates are based on Louisiana Coordinate System of 1927, (North or South Zone).

NOTE: The above description of the Tract nominated for lease has been provided and corrected, where required, exclusively by the nomination party. Any mineral lease selected from this Tract and awarded by the Louisiana State Mineral Board shall be without warranty of any kind, either express, implied, or statutory, including, but not limited to, the implied warranties of merchantability and fitness for a particular purpose. Should the mineral lease awarded by the Louisiana State Mineral Board be subsequently modified, cancelled or abrogated due to the existence of conflicting leases, operating agreements, private claims or other future obligations or conditions which may affect all or any portion of the leased Tract, it shall not relieve the Lessee of the obligation to pay any bonus due thereon to the Louisiana State Mineral Board, nor shall the Louisiana State Mineral Board be obligated to refund any consideration paid by the Lessor prior to such modification, cancellation, or abrogation, including, but not limited to, bonuses, rentals and royalties.

NOTE: The State of Louisiana does hereby reserve, and this lease shall be subject to, the imprescriptible right of surface use in the nature of a servitude in favor of the Department of Natural Resources, including its Offices and Commissions, for the sole purpose of implementing, constructing, servicing and maintaining approved coastal zone management

and/or restoration projects. Utilization of any and all rights derived under this lease by the mineral lessee, its agents, successors or assigns, shall not interfere with nor hinder the reasonable surface use by the Department of Natural Resources, its Offices or Commissions, as herein above reserved.

Applicant: Thomas Sharp

Bidder	Cash Payment	Price / Acre	Rental	Oil	Gas	Other

LOUISIANA COORDINATE SYSTEM (SOUTH ZONE)

Block 45

Block 44

Block 43

TR 35279
962.45 ± ACS.
FEB., 2003

LA US

Gulf of Mexico

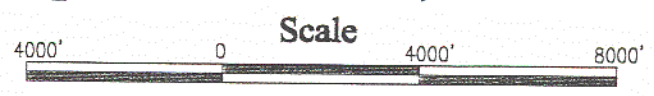
Block 54

P.O.B.
X = 2694350.00
Y = 263330.00

Block 55

Block 56

BLOCK 44
MAIN PASS AREA, REVISED
Plaquemines Parish, Louisiana



TRACT 35280 - Portion of Block 55, Main Pass Area, Revised, Plaquemines Parish, Louisiana

That portion of Block 55, Main Pass Area, Revised, Plaquemines Parish, Louisiana, belonging to the State of Louisiana and not presently under mineral lease on February 12, 2003, being more fully described as follows: Point of Beginning having Coordinates of X = 2,694,350.00 and Y = 263,330.00 being the Northwest corner of Block 55, Main Pass Area, Revised, Plaquemines Parish, Louisiana; thence East 8,347.81 feet on the North Line said Block 55, Main Pass Area, Revised, to a point on the three mile line as set out in the June, 1975, decree of the Supreme Court having Coordinates of X = 2,702,697.81 and Y = 263,330.00; thence Southeasterly along an arc having a radius of 18,240.60 feet and a center point having coordinates of X = 2,688,235 and Y = 252,215 to a point having Coordinates of X = 2,704,469.21 and Y = 260,532.00; thence Southeasterly on an arc having a radius of 18,240.60 feet and a center point having Coordinates of X = 2,689,305 and Y = 250,395 to a point having Coordinates of X = 2,706,677.14 and Y = 255,955.00; thence West 1,510.14 feet to the Northeast Corner of State Lease No. 16779 having Coordinates of X = 2,705,167.00 and Y = 255,955.00; thence West 4,505.00 feet on the North boundary of said State Lease No. 16779 to its most North Northwest corner having Coordinates of X = 2,700,662.00 and Y = 255,955.00; thence South 1,833.00 feet on the boundary of said State Lease No. 16779 to a point having Coordinates of X = 2,700,662.00 and Y = 254,122.00; thence West 6,312.00 feet on the boundary of said State Lease No. 16779 to its Northwest corner having Coordinates of X = 2,694,350.00 and Y = 254,122.00; thence North 9,208.00 feet on the West line of said Block 55, to its Northwest corner being the point of beginning, containing approximately **2,055.61 acres, LESS AND EXCEPT** that portion thereof, if any, lying seaward of the line three nautical miles from the coast line of Louisiana, as said three mile line has been decreed by the Supreme Court of the United States, as determined by a Special Master appointed therein, in litigation styled **United States v. State of Louisiana et al No. 9 Original**, in 1975, all as more particularly outlined on a plat on file in the Office of Mineral Resources, Department of Natural Resources, as provided by the applicant. All bearings, distances and coordinates are based on Louisiana Coordinate System of 1927, (North or South Zone).

NOTE: The above description of the Tract nominated for lease has been provided and corrected, where required, exclusively by the nomination party. Any mineral lease selected from this Tract and awarded by the Louisiana State Mineral Board shall be without warranty of any kind, either express, implied, or statutory, including, but not limited to, the implied warranties of merchantability and fitness for a particular purpose. Should the mineral lease awarded by the Louisiana State Mineral Board be subsequently modified, cancelled or abrogated due to the existence of conflicting leases, operating agreements, private claims or other future obligations or conditions which may affect all or any portion of the leased Tract, it shall not relieve the Lessee of the obligation to pay any bonus due thereon to the Louisiana State Mineral Board, nor shall

the Louisiana State Mineral Board be obligated to refund any consideration paid by the Lessor prior to such modification, cancellation, or abrogation, including, but not limited to, bonuses, rentals and royalties.

NOTE: The Department of Wildlife and Fisheries has designated certain areas in the coastal waters of the State of Louisiana as Oyster Seed Bed Areas. The exact location of those Seed Bed Areas must be obtained from the Department of Wildlife and Fisheries and any work done under a mineral lease from the State of Louisiana may necessarily be conducted in conformity with the rules and regulations promulgated by the said Department of Wildlife and Fisheries for Oyster Seed Bed Areas.

NOTE: The State of Louisiana does hereby reserve, and this lease shall be subject to, the imprescriptible right of surface use in the nature of a servitude in favor of the Department of Natural Resources, including its Offices and Commissions, for the sole purpose of implementing, constructing, servicing and maintaining approved coastal zone management and/or restoration projects. Utilization of any and all rights derived under this lease by the mineral lessee, its agents, successors or assigns, shall not interfere with nor hinder the reasonable surface use by the Department of Natural Resources, its Offices or Commissions, as herein above reserved.

Applicant: Thomas Sharp

Bidder	Cash Payment	Price / Acre	Rental	Oil	Gas	Other

Block 45

Block 44

TR 35280
2,055.61± ACS.
FEB., 2003

P.O.B.

X = 2694350.00

Y = 263330.00

Block 54

LA

Gulf of Mexico

Block 55

US

SL16793

SL16779

Block 66

Block 84

**BLOCK 55
MAIN PASS AREA, REVISED
Plaquemines Parish, Louisiana**

