

**TRACT 35296 - Plaquemines Parish, Louisiana**

All of the lands now or formerly constituting the beds and bottoms of all water bodies of every nature and description, and all islands and other lands formed by accretion, where allowed by law, or by reliction, and excepting tax adjudicated lands, belonging to the State of Louisiana and not presently under mineral lease on February 12, 2003, situated in Plaquemines Parish, Louisiana, and more particularly described as follows: Beginning at a point having Coordinates of X = 2,655,726.00 and Y = 205,196.00; thence South 30 degrees 16 minutes 34 seconds East 6,487.92 feet to a point having Coordinates of X = 2,658,997.00 and Y = 199,593.00; thence South 44 degrees 48 minutes 34 seconds West 5,315.35 feet to a point having Coordinates of X = 2,655,251.00 and Y = 195,822.00; thence North 25 degrees 40 minutes 18 seconds West 6,654.90 feet to a point having Coordinates of X = 2,652,368.00 and Y = 201,820.00; thence North 44 degrees 50 minutes 49 seconds East 4,761.67 feet to the point of beginning, containing approximately **626 acres**, all as more particularly outlined on a plat on file in the Office of Mineral Resources, Department of Natural Resources, as provided by the applicant. All bearings, distances and coordinates are based on Louisiana Coordinate System of 1927, (North or South Zone), where applicable.

NOTE: The above description of the Tract nominated for lease has been provided and corrected, where required, exclusively by the nomination party. Any mineral lease selected from this Tract and awarded by the Louisiana State Mineral Board shall be without warranty of any kind, either express, implied, or statutory, including, but not limited to, the implied warranties of merchantability and fitness for a particular purpose. Should the mineral lease awarded by the Louisiana State Mineral Board be subsequently modified, cancelled or abrogated due to the existence of conflicting leases, operating agreements, private claims or other future obligations or conditions which may affect all or any portion of the leased Tract, it shall not relieve the Lessee of the obligation to pay any bonus due thereon to the Louisiana State Mineral Board, nor shall the Louisiana State Mineral Board be obligated to refund any consideration paid by the Lessor prior to such modification, cancellation, or abrogation, including, but not limited to, bonuses, rentals and royalties.

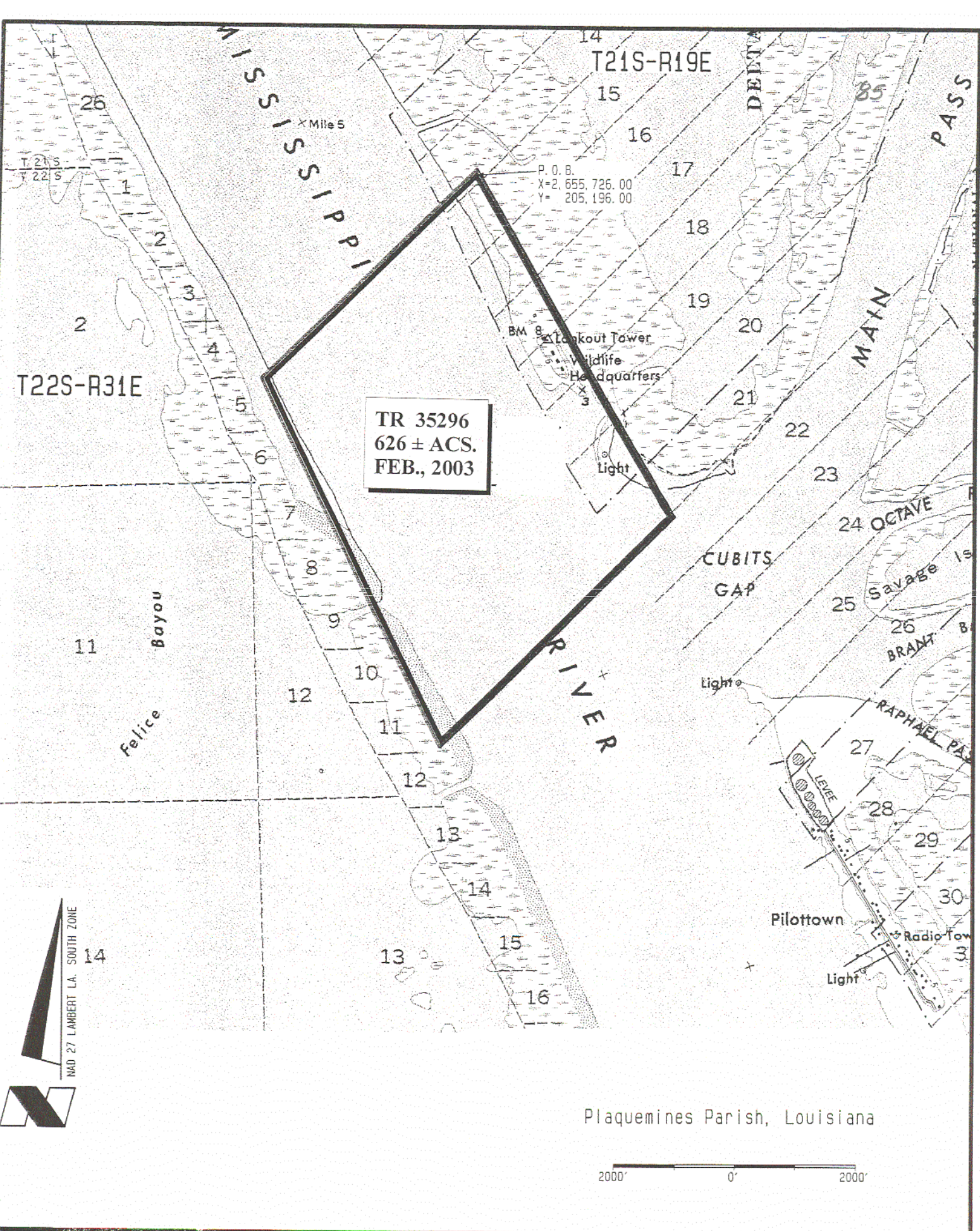
NOTE: The Department of Wildlife and Fisheries has designated certain areas in the coastal waters of the State of Louisiana as Oyster Seed Bed Areas. The exact location of those Seed Bed Areas must be obtained from the Department of Wildlife and Fisheries and any work done under a mineral lease from the State of Louisiana may necessarily be conducted in conformity with the rules and regulations promulgated by the said Department of Wildlife and Fisheries for Oyster Seed Bed Areas.

NOTE: The State of Louisiana does hereby reserve, and this lease shall be subject to, the imprescriptible right of surface use in the nature of a servitude in favor of the Department of Natural Resources, including its Offices and Commissions, for the sole purpose of implementing,

constructing, servicing and maintaining approved coastal zone management and/or restoration projects. Utilization of any and all rights derived under this lease by the mineral lessee, its agents, successors or assigns, shall not interfere with nor hinder the reasonable surface use by the Department of Natural Resources, its Offices or Commissions, as herein above reserved.

Applicant: Genesis Resources Corporation

Bidder	Cash Payment	Price / Acre	Rental	Oil	Gas	Other

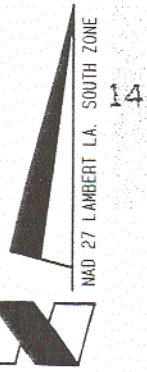


TR 35296  
626 ± ACS.  
FEB., 2003

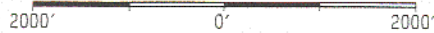
P. O. B.  
X=2,655,726.00  
Y=205,196.00

T22S-R31E

T21S-R19E



Plaquemines Parish, Louisiana



**TRACT 35297 - Plaquemines Parish, Louisiana**

All of the lands now or formerly constituting the beds and bottoms of all water bodies of every nature and description, and all islands and other lands formed by accretion, where allowed by law, or by reliction, and excepting tax adjudicated lands, belonging to the State of Louisiana and not presently under mineral lease on February 12, 2003, situated in Plaquemines Parish, Louisiana, and more particularly described as follows: Beginning at a point having Coordinates of X = 2,642,141.00 and Y = 221,540.00; thence North 49 degrees 08 minutes 24 seconds West 8,303.38 feet to a point having Coordinates of X = 2,635,861.07 and Y = 226,972.18; thence North 44 degrees 50 minutes 34 seconds East approximately 2,932 feet to a point on the Southern boundary line of State Lease No. 335, as amended; thence Easterly approximately 7,456 feet along the Southern boundary of said State Lease No. 335 to the Northwest corner of State Lease No. 1610; thence Southeasterly approximately 3,099 feet to a point of intersection with a line having a bearing of North 44 degrees 50 minutes 23 seconds East passing through a point having Coordinates of X = 2,642,141.00 and Y = 221,540.00; thence South 44 degrees 50 minutes 23 seconds West approximately 7,782 feet to the point of beginning, **LESS AND EXCEPT** any portion of State Lease No. 335, as amended and State Lease No. 1610, that may lie within the above described tract, containing approximately **637.28 acres**, all as more particularly outlined on a plat on file in the Office of Mineral Resources, Department of Natural Resources, as provided by the applicant. All bearings, distances and coordinates are based on Louisiana Coordinate System of 1927, (North or South Zone), where applicable.

NOTE: The above description of the Tract nominated for lease has been provided and corrected, where required, exclusively by the nomination party. Any mineral lease selected from this Tract and awarded by the Louisiana State Mineral Board shall be without warranty of any kind, either express, implied, or statutory, including, but not limited to, the implied warranties of merchantability and fitness for a particular purpose. Should the mineral lease awarded by the Louisiana State Mineral Board be subsequently modified, cancelled or abrogated due to the existence of conflicting leases, operating agreements, private claims or other future obligations or conditions which may affect all or any portion of the leased Tract, it shall not relieve the Lessee of the obligation to pay any bonus due thereon to the Louisiana State Mineral Board, nor shall the Louisiana State Mineral Board be obligated to refund any consideration paid by the Lessor prior to such modification, cancellation, or abrogation, including, but not limited to, bonuses, rentals and royalties.

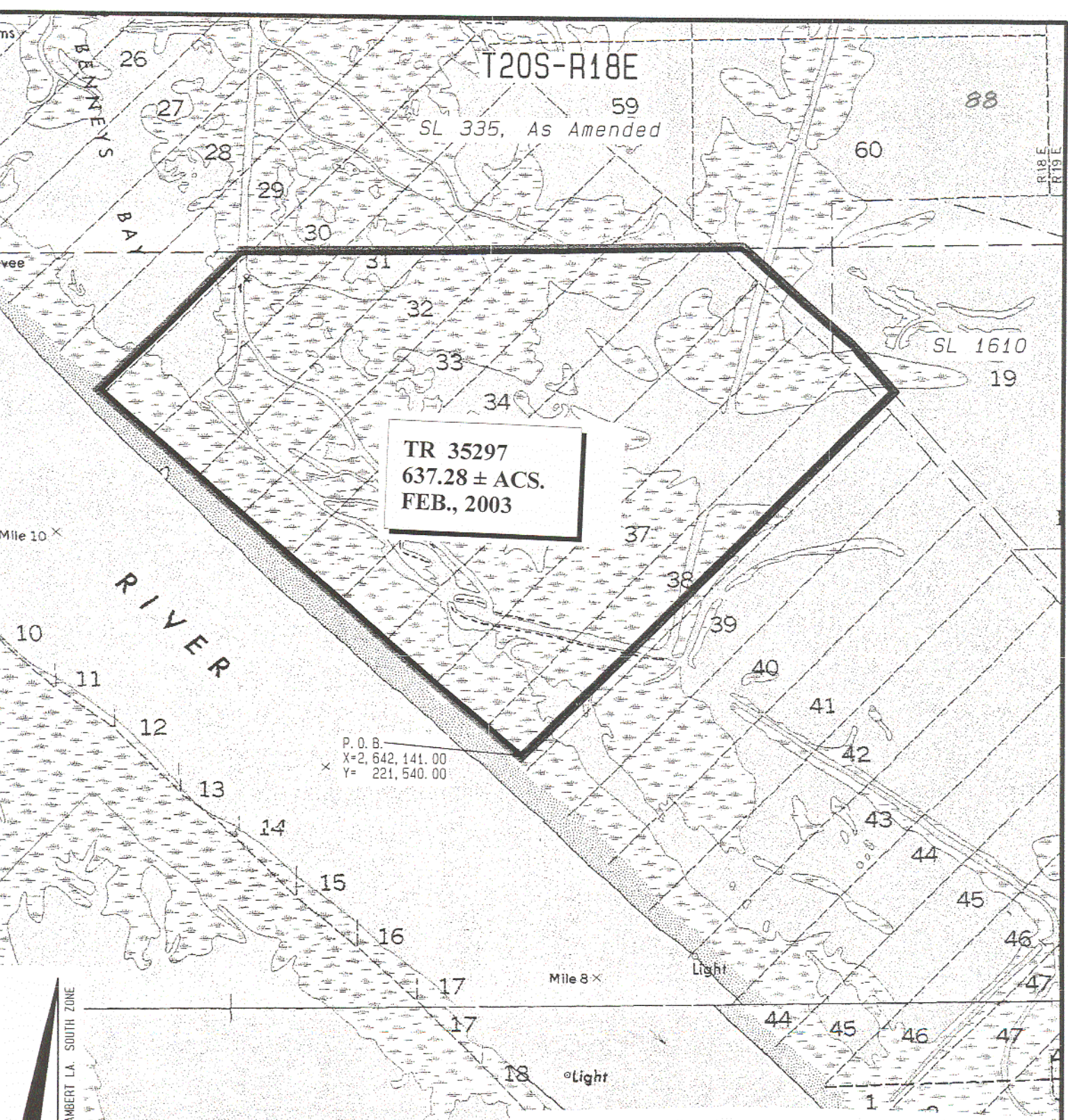
NOTE: The Department of Wildlife and Fisheries has designated certain areas in the coastal waters of the State of Louisiana as Oyster Seed Bed Areas. The exact location of those Seed Bed Areas must be obtained from the Department of Wildlife and Fisheries and any work done under a mineral lease from the State of Louisiana may necessarily be conducted in

conformity with the rules and regulations promulgated by the said Department of Wildlife and Fisheries for Oyster Seed Bed Areas.

NOTE: The State of Louisiana does hereby reserve, and this lease shall be subject to, the imprescriptible right of surface use in the nature of a servitude in favor of the Department of Natural Resources, including its Offices and Commissions, for the sole purpose of implementing, constructing, servicing and maintaining approved coastal zone management and/or restoration projects. Utilization of any and all rights derived under this lease by the mineral lessee, its agents, successors or assigns, shall not interfere with nor hinder the reasonable surface use by the Department of Natural Resources, its Offices or Commissions, as herein above reserved.

Applicant: Genesis Resources Corporation

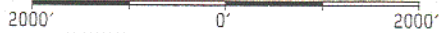
Bidder	Cash Payment	Price / Acre	Rental	Oil	Gas	Other



TR 35297  
637.28 ± ACS.  
FEB., 2003

P. O. B.  
X=2,642,141.00  
Y=221,540.00

Plaquemines Parish, Louisiana



**TRACT 35298 - Plaquemines Parish, Louisiana**

All of the lands now or formerly constituting the beds and bottoms of all water bodies of every nature and description, and all islands and other lands formed by accretion, where allowed by law, or by reliction, and excepting tax adjudicated lands, belonging to the State of Louisiana and not presently under mineral lease on February 12, 2003, situated in Plaquemines Parish, Louisiana, and more particularly described as follows: Beginning at a point having Coordinates of X = 2,642,141.00 and Y = 221,540.00; thence North 44 degrees 50 minutes 23 seconds East approximately 7,782 feet to a point on the Western boundary line of State Lease No. 1610; thence Southeasterly approximately 7,524 feet to a point of intersection with a line having a bearing of North 44 degrees 50 minutes 46 seconds East passing through a point having Coordinates of X = 2,647,706.00 and Y = 216,481.00; thence South 44 degrees 50 minutes 46 seconds West approximately 7,187 feet to a point having Coordinates of X = 2,647,706.00 and Y = 216,481.00; thence North 47 degrees 43 minutes 37 seconds West 7,520.82 feet to the point of beginning, **LESS AND EXCEPT** any portion of State Lease No. 1610, that may lie within the above described tract, containing approximately **1,111.14 acres**, all as more particularly outlined on a plat on file in the Office of Mineral Resources, Department of Natural Resources, as provided by the applicant. All bearings, distances and coordinates are based on Louisiana Coordinate System of 1927, (North or South Zone), where applicable.

NOTE: The above description of the Tract nominated for lease has been provided and corrected, where required, exclusively by the nomination party. Any mineral lease selected from this Tract and awarded by the Louisiana State Mineral Board shall be without warranty of any kind, either express, implied, or statutory, including, but not limited to, the implied warranties of merchantability and fitness for a particular purpose. Should the mineral lease awarded by the Louisiana State Mineral Board be subsequently modified, cancelled or abrogated due to the existence of conflicting leases, operating agreements, private claims or other future obligations or conditions which may affect all or any portion of the leased Tract, it shall not relieve the Lessee of the obligation to pay any bonus due thereon to the Louisiana State Mineral Board, nor shall the Louisiana State Mineral Board be obligated to refund any consideration paid by the Lessor prior to such modification, cancellation, or abrogation, including, but not limited to, bonuses, rentals and royalties.

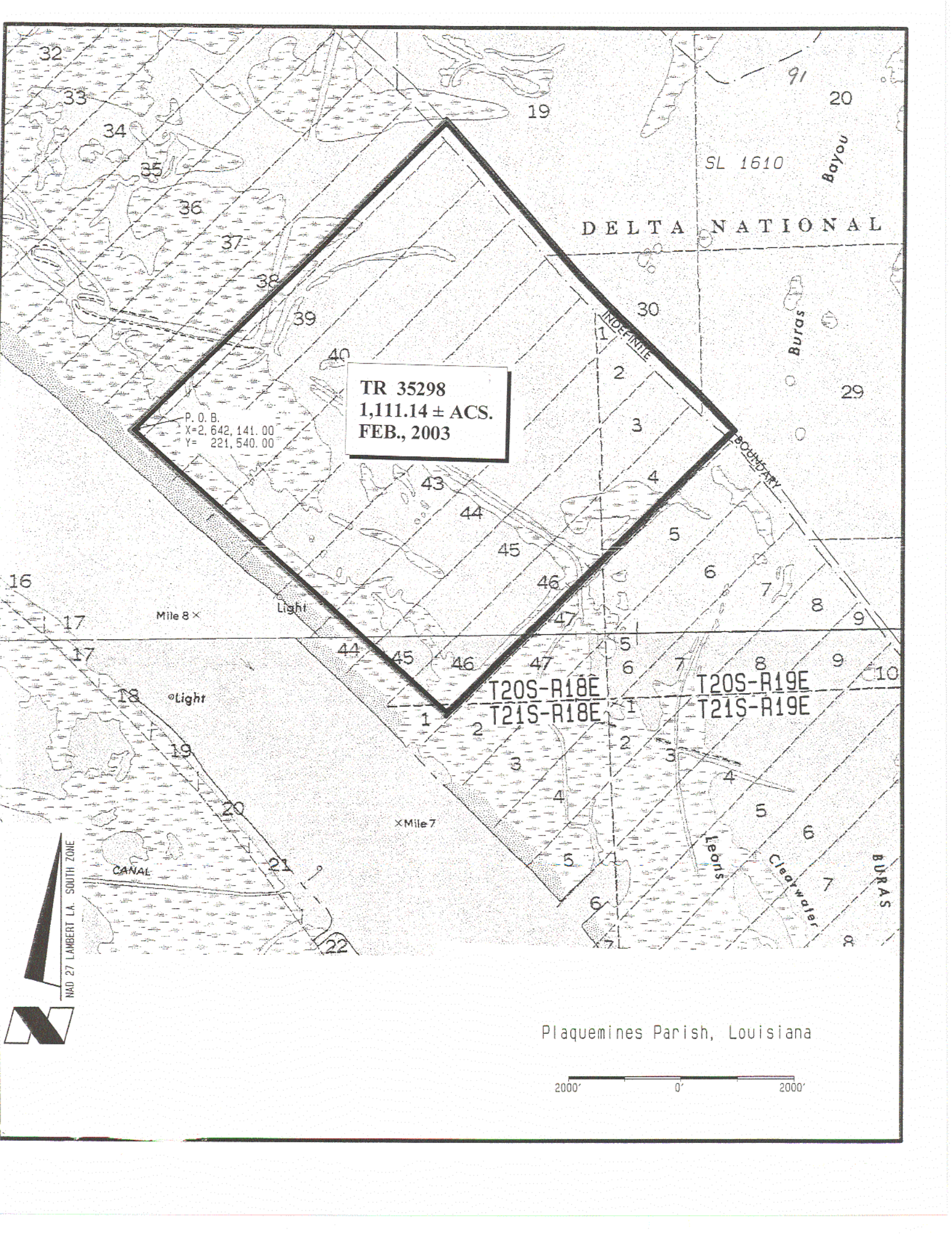
NOTE: The Department of Wildlife and Fisheries has designated certain areas in the coastal waters of the State of Louisiana as Oyster Seed Bed Areas. The exact location of those Seed Bed Areas must be obtained from the Department of Wildlife and Fisheries and any work done under a mineral lease from the State of Louisiana may necessarily be conducted in conformity with the rules and regulations promulgated by the said Department of Wildlife and Fisheries for Oyster Seed Bed Areas.

NOTE: The State of Louisiana does hereby reserve, and this lease shall be subject to, the imprescriptible right of surface use in the nature of a servitude in favor of the Department of Natural Resources, including its Offices and Commissions, for the sole purpose of implementing, constructing, servicing and maintaining approved coastal zone management and/or restoration projects. Utilization of any and all rights derived under this lease by the mineral lessee, its agents, successors or assigns, shall not interfere with nor hinder the reasonable surface use by the Department of Natural Resources, its Offices or Commissions, as herein above reserved.

Applicant: Genesis Resources Corporation

Bidder	Cash Payment	Price / Acre	Rental	Oil	Gas	Other





TR 35298  
1,111.14 ± ACS.  
FEB., 2003

P. O. B.  
X=2,642,141.00  
Y= 221,540.00

DELTA NATIONAL

Bayou

Buras

BOUNDARY

T20S-R18E  
T21S-R18E

T20S-R19E  
T21S-R19E

Leons

Clearwater

BURAS

Mile 8 x

xMile 7

NAD 27 LAMBERT L.A. SOUTH ZONE

Plaquemines Parish, Louisiana

2000' 0' 2000'

**TRACT 35299 - Plaquemines Parish, Louisiana**

All of the lands now or formerly constituting the beds and bottoms of all water bodies of every nature and description, and all islands and other lands formed by accretion, where allowed by law, or by reliction, and excepting tax adjudicated lands, belonging to the State of Louisiana and not presently under mineral lease on February 12, 2003, situated in Plaquemines Parish, Louisiana, and more particularly described as follows: Beginning at a point having Coordinates of X = 2,647,706.00 and Y = 216,481.00; thence North 44 degrees 50 minutes 46 seconds East approximately 7,187 feet to a point on the Western boundary line of State Lease No. 1610; thence Southeasterly approximately 7,392 feet to a point of intersection with a line having a bearing of North 44 degrees 50 minutes 39 seconds East passing through a point having Coordinates of X = 2,652,441.00 and Y = 210,874.00; thence South 44 degrees 50 minutes 39 seconds West approximately 6,755 feet to a point having Coordinates of X = 2,652,441.00 and Y = 210,874.00; thence North 40 degrees 10 minutes 50 seconds West 7,338.85 feet to the point of beginning, **LESS AND EXCEPT** any portion of State Lease No. 1610, that may lie within the above described tract, containing approximately **651.97 acres**, all as more particularly outlined on a plat on file in the Office of Mineral Resources, Department of Natural Resources, as provided by the applicant. All bearings, distances and coordinates are based on Louisiana Coordinate System of 1927, (North or South Zone), where applicable.

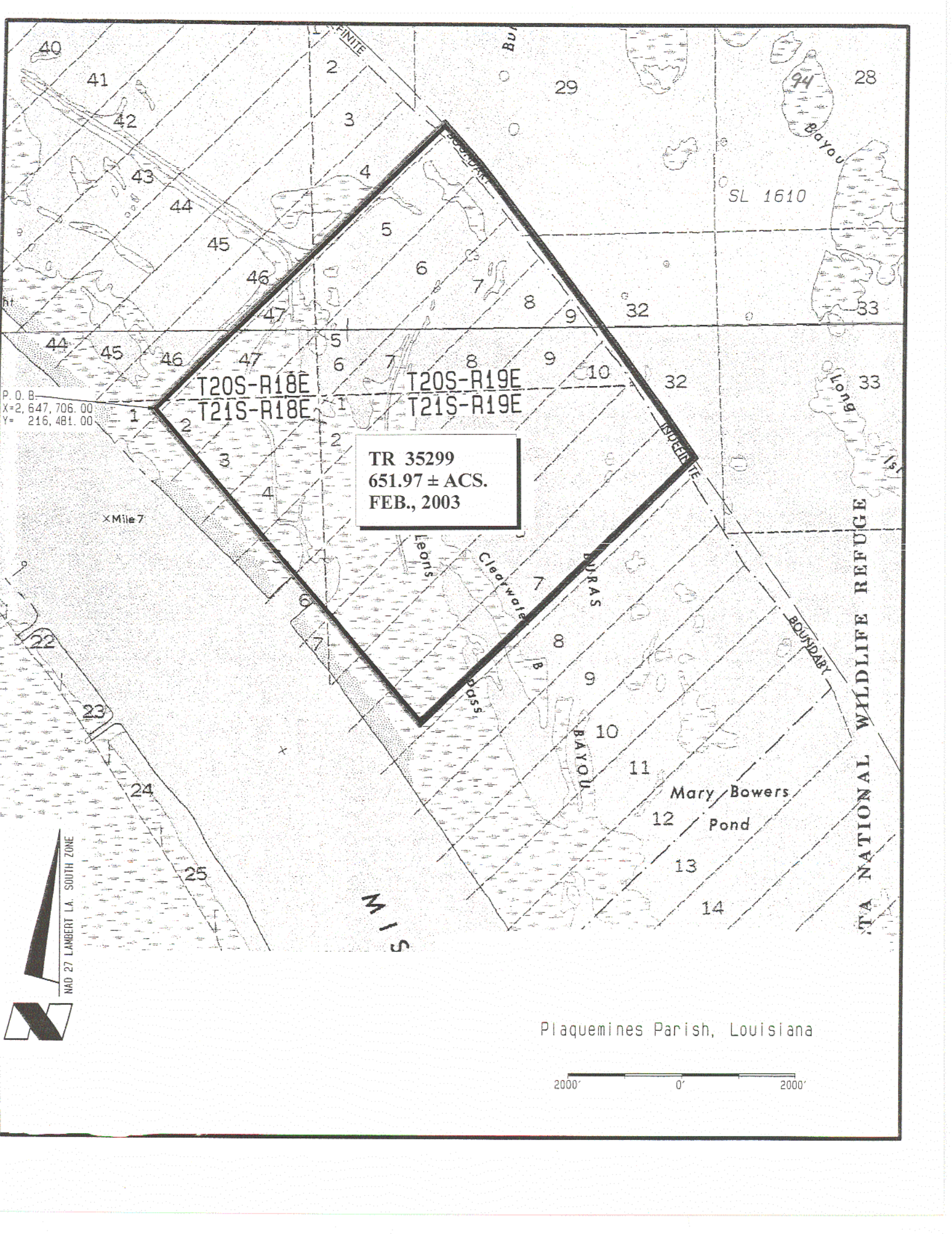
NOTE: The above description of the Tract nominated for lease has been provided and corrected, where required, exclusively by the nomination party. Any mineral lease selected from this Tract and awarded by the Louisiana State Mineral Board shall be without warranty of any kind, either express, implied, or statutory, including, but not limited to, the implied warranties of merchantability and fitness for a particular purpose. Should the mineral lease awarded by the Louisiana State Mineral Board be subsequently modified, cancelled or abrogated due to the existence of conflicting leases, operating agreements, private claims or other future obligations or conditions which may affect all or any portion of the leased Tract, it shall not relieve the Lessee of the obligation to pay any bonus due thereon to the Louisiana State Mineral Board, nor shall the Louisiana State Mineral Board be obligated to refund any consideration paid by the Lessor prior to such modification, cancellation, or abrogation, including, but not limited to, bonuses, rentals and royalties.

NOTE: The Department of Wildlife and Fisheries has designated certain areas in the coastal waters of the State of Louisiana as Oyster Seed Bed Areas. The exact location of those Seed Bed Areas must be obtained from the Department of Wildlife and Fisheries and any work done under a mineral lease from the State of Louisiana may necessarily be conducted in conformity with the rules and regulations promulgated by the said Department of Wildlife and Fisheries for Oyster Seed Bed Areas.

NOTE: The State of Louisiana does hereby reserve, and this lease shall be subject to, the imprescriptible right of surface use in the nature of a servitude in favor of the Department of Natural Resources, including its Offices and Commissions, for the sole purpose of implementing, constructing, servicing and maintaining approved coastal zone management and/or restoration projects. Utilization of any and all rights derived under this lease by the mineral lessee, its agents, successors or assigns, shall not interfere with nor hinder the reasonable surface use by the Department of Natural Resources, its Offices or Commissions, as herein above reserved.

Applicant: Genesis Resources Corporation

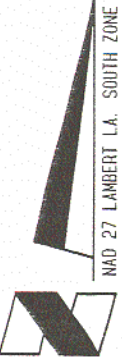
Bidder	Cash Payment	Price / Acre	Rental	Oil	Gas	Other



TR 35299  
651.97 ± ACS.  
FEB., 2003

P. O. B.  
X=2,647,706.00  
Y= 216,481.00

X Mile 7



Plaquemines Parish, Louisiana

2000' 0' 2000'

ATA NATIONAL WILDLIFE REFUGE

**TRACT 35300 - Plaquemines Parish, Louisiana**

All of the lands now or formerly constituting the beds and bottoms of all water bodies of every nature and description, and all islands and other lands formed by accretion, where allowed by law, or by reliction, and excepting tax adjudicated lands, belonging to the State of Louisiana and not presently under mineral lease on February 12, 2003, situated in Plaquemines Parish, Louisiana, and more particularly described as follows: Beginning at a point having Coordinates of X = 2,652,441.00 and Y = 210,874.00; thence North 44 degrees 50 minutes 39 seconds East approximately 6,755 feet to a point on the Western boundary line of State Lease No. 1610; thence Southeasterly approximately 6,467 feet to a point of intersection with a line having a bearing of North 44 degrees 50 minutes 49 seconds East passing through a point having Coordinates of X = 2,655,726.00 and Y = 205,196.00; thence South 44 degrees 50 minutes 49 seconds West approximately 7,168 feet to a point having Coordinates of X = 2,655,726.00 and Y = 205,196.00; thence North 30 degrees 03 minutes 05 seconds West 6,559.79 feet to the point of beginning, **LESS AND EXCEPT** any portion of State Lease No. 1610, that may lie within the above described tract, containing approximately **817.26 acres**, all as more particularly outlined on a plat on file in the Office of Mineral Resources, Department of Natural Resources, as provided by the applicant. All bearings, distances and coordinates are based on Louisiana Coordinate System of 1927, (North or South Zone), where applicable.

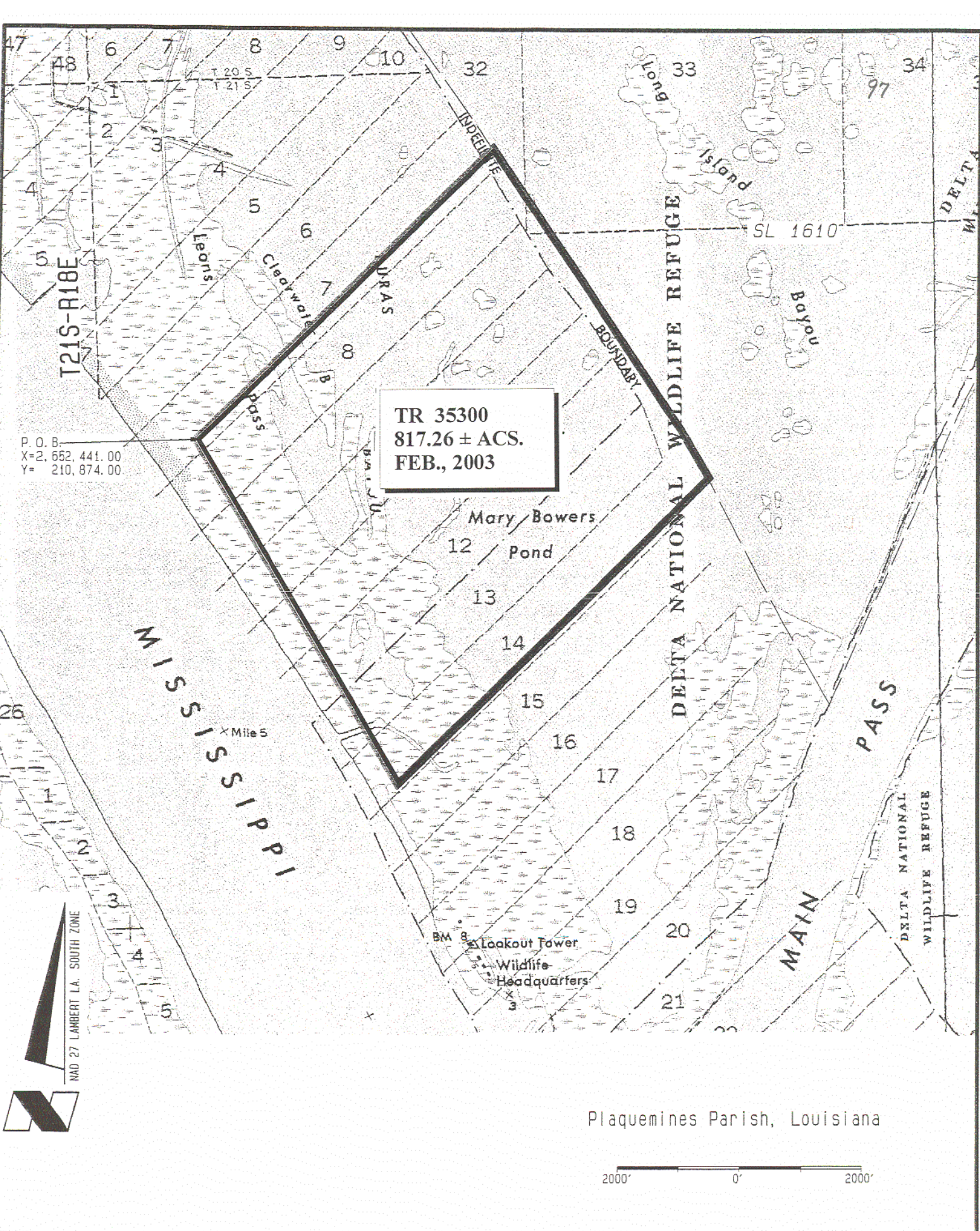
NOTE: The above description of the Tract nominated for lease has been provided and corrected, where required, exclusively by the nomination party. Any mineral lease selected from this Tract and awarded by the Louisiana State Mineral Board shall be without warranty of any kind, either express, implied, or statutory, including, but not limited to, the implied warranties of merchantability and fitness for a particular purpose. Should the mineral lease awarded by the Louisiana State Mineral Board be subsequently modified, cancelled or abrogated due to the existence of conflicting leases, operating agreements, private claims or other future obligations or conditions which may affect all or any portion of the leased Tract, it shall not relieve the Lessee of the obligation to pay any bonus due thereon to the Louisiana State Mineral Board, nor shall the Louisiana State Mineral Board be obligated to refund any consideration paid by the Lessor prior to such modification, cancellation, or abrogation, including, but not limited to, bonuses, rentals and royalties.

NOTE: The Department of Wildlife and Fisheries has designated certain areas in the coastal waters of the State of Louisiana as Oyster Seed Bed Areas. The exact location of those Seed Bed Areas must be obtained from the Department of Wildlife and Fisheries and any work done under a mineral lease from the State of Louisiana may necessarily be conducted in conformity with the rules and regulations promulgated by the said Department of Wildlife and Fisheries for Oyster Seed Bed Areas.

NOTE: The State of Louisiana does hereby reserve, and this lease shall be subject to, the imprescriptible right of surface use in the nature of a servitude in favor of the Department of Natural Resources, including its Offices and Commissions, for the sole purpose of implementing, constructing, servicing and maintaining approved coastal zone management and/or restoration projects. Utilization of any and all rights derived under this lease by the mineral lessee, its agents, successors or assigns, shall not interfere with nor hinder the reasonable surface use by the Department of Natural Resources, its Offices or Commissions, as herein above reserved.

Applicant: Genesis Resources Corporation

Bidder	Cash Payment	Price / Acre	Rental	Oil	Gas	Other



TR 35300  
817.26 ± ACS.  
FEB., 2003

P. O. B.  
X=2,652,441.00  
Y= 210,874.00

NAD 27 LAMBERT LA. SOUTH ZONE

Plaquemines Parish, Louisiana

2000' 0' 2000'

**TRACT 35301 - Plaquemines Parish, Louisiana**

All of the lands now or formerly constituting the beds and bottoms of all water bodies of every nature and description, and all islands and other lands formed by accretion, where allowed by law, or by reliction, and excepting tax adjudicated lands, belonging to the State of Louisiana and not presently under mineral lease on February 12, 2003, situated in Plaquemines Parish, Louisiana, and more particularly described as follows: Beginning at a point having Coordinates of X = 2,655,726.00 and Y = 205,196.00; thence North 44 degrees 50 minutes 49 seconds East approximately 7,168 feet to a point on the Western boundary line of State Lease No. 1610; thence Southeasterly approximately 4,275 feet to the South corner of said State Lease No. 1610; thence Southeasterly approximately 2,288 feet to a point having Coordinates of X = 2,663,848.00 and Y = 204,476.00; thence South 44 degrees 48 minutes 42 seconds West 6,883.01 feet to a point having Coordinates of X = 2,658,997.00 and Y = 199,593.00; thence North 30 degrees 16 minutes 34 seconds West 6,487.92 feet to the point of beginning, **LESS AND EXCEPT** any portion of State Lease No. 1610, that may lie within the above described tract, containing approximately **676.77 acres**, all as more particularly outlined on a plat on file in the Office of Mineral Resources, Department of Natural Resources, as provided by the applicant. All bearings, distances and coordinates are based on Louisiana Coordinate System of 1927, (North or South Zone), where applicable.

NOTE: The above description of the Tract nominated for lease has been provided and corrected, where required, exclusively by the nomination party. Any mineral lease selected from this Tract and awarded by the Louisiana State Mineral Board shall be without warranty of any kind, either express, implied, or statutory, including, but not limited to, the implied warranties of merchantability and fitness for a particular purpose. Should the mineral lease awarded by the Louisiana State Mineral Board be subsequently modified, cancelled or abrogated due to the existence of conflicting leases, operating agreements, private claims or other future obligations or conditions which may affect all or any portion of the leased Tract, it shall not relieve the Lessee of the obligation to pay any bonus due thereon to the Louisiana State Mineral Board, nor shall the Louisiana State Mineral Board be obligated to refund any consideration paid by the Lessor prior to such modification, cancellation, or abrogation, including, but not limited to, bonuses, rentals and royalties.

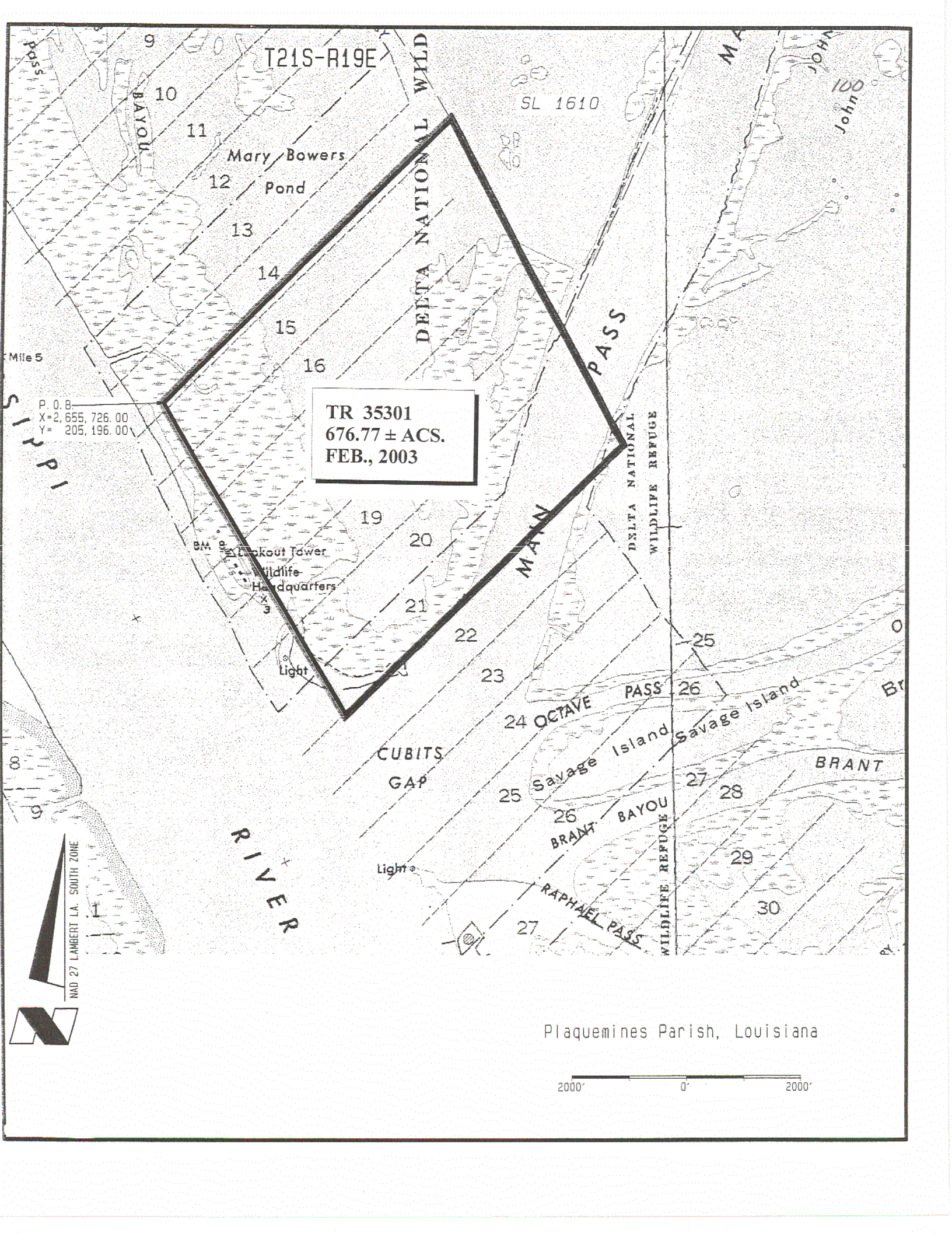
NOTE: The Department of Wildlife and Fisheries has designated certain areas in the coastal waters of the State of Louisiana as Oyster Seed Bed Areas. The exact location of those Seed Bed Areas must be obtained from the Department of Wildlife and Fisheries and any work done under a mineral lease from the State of Louisiana may necessarily be conducted in conformity with the rules and regulations promulgated by the said Department of Wildlife and Fisheries for Oyster Seed Bed Areas.



NOTE: The State of Louisiana does hereby reserve, and this lease shall be subject to, the imprescriptible right of surface use in the nature of a servitude in favor of the Department of Natural Resources, including its Offices and Commissions, for the sole purpose of implementing, constructing, servicing and maintaining approved coastal zone management and/or restoration projects. Utilization of any and all rights derived under this lease by the mineral lessee, its agents, successors or assigns, shall not interfere with nor hinder the reasonable surface use by the Department of Natural Resources, its Offices or Commissions, as herein above reserved.

Applicant: Genesis Resources Corporation

Bidder	Cash Payment	Price / Acre	Rental	Oil	Gas	Other



T21S-R19E

SL 1610

Mary Bowers Pond

DELTA NATIONAL WILD

DELTA NATIONAL WILDLIFE REFUGE

TR 35301  
676.77 ± ACS.  
FEB., 2003

P. O. B.  
X=2,655,726.00  
Y=205,196.00

BM  
Lookout Tower  
Wildlife Headquarters  
Light

MAIN PASS

DELTA NATIONAL WILDLIFE REFUGE

24 OCTAVE PASS

CUBITS GAP

Savage Island

Savage Island

BRANT

26 BRANT BAYOU

MISSISSIPPI RIVER

RAPHAEL PASS

WILDLIFE REFUGE

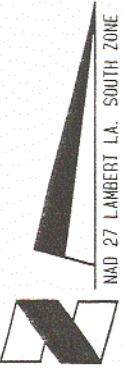
27

28

29

30

Light



NAD 27 LAMBERT LA. SOUTH ZONE

Plaquemines Parish, Louisiana

2000' 0' 2000'

**TRACT 35302 - Portion of Block 50, Chandeleur Sound Area, St. Bernard Parish, Louisiana**

All of the lands now or formerly constituting the beds and bottoms of all water bodies of every nature and description, and all islands and other lands formed by accretion, where allowed by law, or by reliction, and excepting tax adjudicated lands, belonging to the State of Louisiana and not presently under mineral lease on February 12, 2003, situated in St. Bernard Parish, Louisiana, and more particularly described as follows: Beginning at the Northwest corner of Block 50, Chandeleur Sound Area, having Coordinates of X = 2,635,350.00 and Y = 410,830.00; thence East 7,375.00 feet along the North line of said Block 50 to a point having Coordinates of X = 2,642,725.00 and Y = 410,830.00; thence South 14,750.00 feet to a point on the South line of said Block 50 having Coordinates of X = 2,642,725.00 and Y = 396,080.00; thence West 7,375.00 feet along the South line of said Block 50 to its Southwest corner having Coordinates of X = 2,635,350.00 and Y = 396,080.00; thence North 14,750.00 feet along the West line of said Block 50 to the point of beginning, containing approximately **1,823 acres**, all as more particularly outlined on a plat on file in the Office of Mineral Resources, Department of Natural Resources, as provided by the applicant. All bearings, distances and coordinates are based on Louisiana Coordinate System of 1927, (North or South Zone), where applicable.

NOTE: The above description of the Tract nominated for lease has been provided and corrected, where required, exclusively by the nomination party. Any mineral lease selected from this Tract and awarded by the Louisiana State Mineral Board shall be without warranty of any kind, either express, implied, or statutory, including, but not limited to, the implied warranties of merchantability and fitness for a particular purpose. Should the mineral lease awarded by the Louisiana State Mineral Board be subsequently modified, cancelled or abrogated due to the existence of conflicting leases, operating agreements, private claims or other future obligations or conditions which may affect all or any portion of the leased Tract, it shall not relieve the Lessee of the obligation to pay any bonus due thereon to the Louisiana State Mineral Board, nor shall the Louisiana State Mineral Board be obligated to refund any consideration paid by the Lessor prior to such modification, cancellation, or abrogation, including, but not limited to, bonuses, rentals and royalties.

NOTE: The Department of Wildlife and Fisheries has designated certain areas in the coastal waters of the State of Louisiana as Oyster Seed Bed Areas. The exact location of those Seed Bed Areas must be obtained from the Department of Wildlife and Fisheries and any work done under a mineral lease from the State of Louisiana may necessarily be conducted in conformity with the rules and regulations promulgated by the said Department of Wildlife and Fisheries for Oyster Seed Bed Areas.

NOTE: The State of Louisiana does hereby reserve, and this lease shall be subject to, the imprescriptible right of surface use in the nature of a

servitude in favor of the Department of Natural Resources, including its Offices and Commissions, for the sole purpose of implementing, constructing, servicing and maintaining approved coastal zone management and/or restoration projects. Utilization of any and all rights derived under this lease by the mineral lessee, its agents, successors or assigns, shall not interfere with nor hinder the reasonable surface use by the Department of Natural Resources, its Offices or Commissions, as herein above reserved.

Applicant: Energy Partners, Inc.

Bidder	Cash Payment	Price / Acre	Rental	Oil	Gas	Other

# CHANDELEUR SOUND AREA

34

Point Pa

103

Bik. 44

Bik. 43

Bik. 42

**P.O.B.**  
X = 2,635,350.00  
Y = 410,830.00

MEXICO

TREASURE BAY GAS FIELD

Bik. 49

Bik. 50

Bik. 51

TR 35302  
1,823 ± ACS.  
FEB., 2003

Codfish Point

NAD 1927 (South Zone)

Bik. 70

Bik. 69

Bik. 68

ST. BERNARD PARISH, LOUISIANA

SCALE : 1" = 3000'

**TRACT 35303 - Portion of Block 50, Chandeleur Sound Area, St. Bernard Parish, Louisiana**

All of the lands now or formerly constituting the beds and bottoms of all water bodies of every nature and description, and all islands and other lands formed by accretion, where allowed by law, or by reliction, and excepting tax adjudicated lands, belonging to the State of Louisiana and not presently under mineral lease on February 12, 2003, situated in St. Bernard Parish, Louisiana, and more particularly described as follows: Beginning at the Northeast corner of Block 50, Chandeleur Sound Area, having Coordinates of X = 2,650,100.00 and Y = 410,830.00; thence South 14,750.00 feet along the East line of said Block 50 to its Southeast corner having Coordinates of X = 2,650,100.00 and Y = 396,080.00; thence West 7,375.00 feet along the South line of said Block 50 to a point having Coordinates of X = 2,642,725.00 and Y = 396,080.00; thence North 14,750.00 feet to a point on the North line of said Block 50 having Coordinates of X = 2,642,725.00 and Y = 410,830.00; thence East 7,375.00 feet along the North line of said Block 50 to the point of beginning, containing approximately **1,686 acres**, all as more particularly outlined on a plat on file in the Office of Mineral Resources, Department of Natural Resources, as provided by the applicant. All bearings, distances and coordinates are based on Louisiana Coordinate System of 1927, (North or South Zone), where applicable.

NOTE: The above description of the Tract nominated for lease has been provided and corrected, where required, exclusively by the nomination party. Any mineral lease selected from this Tract and awarded by the Louisiana State Mineral Board shall be without warranty of any kind, either express, implied, or statutory, including, but not limited to, the implied warranties of merchantability and fitness for a particular purpose. Should the mineral lease awarded by the Louisiana State Mineral Board be subsequently modified, cancelled or abrogated due to the existence of conflicting leases, operating agreements, private claims or other future obligations or conditions which may affect all or any portion of the leased Tract, it shall not relieve the Lessee of the obligation to pay any bonus due thereon to the Louisiana State Mineral Board, nor shall the Louisiana State Mineral Board be obligated to refund any consideration paid by the Lessor prior to such modification, cancellation, or abrogation, including, but not limited to, bonuses, rentals and royalties.

NOTE: The Department of Wildlife and Fisheries has designated certain areas in the coastal waters of the State of Louisiana as Oyster Seed Bed Areas. The exact location of those Seed Bed Areas must be obtained from the Department of Wildlife and Fisheries and any work done under a mineral lease from the State of Louisiana may necessarily be conducted in conformity with the rules and regulations promulgated by the said Department of Wildlife and Fisheries for Oyster Seed Bed Areas.

NOTE: The State of Louisiana does hereby reserve, and this lease shall be subject to, the imprescriptible right of surface use in the nature of a

servitude in favor of the Department of Natural Resources, including its Offices and Commissions, for the sole purpose of implementing, constructing, servicing and maintaining approved coastal zone management and/or restoration projects. Utilization of any and all rights derived under this lease by the mineral lessee, its agents, successors or assigns, shall not interfere with nor hinder the reasonable surface use by the Department of Natural Resources, its Offices or Commissions, as herein above reserved.

Applicant: Energy Partners, Inc.

Bidder	Cash Payment	Price / Acre	Rental	Oil	Gas	Other

CHANDELEUR SOUND AREA

34

Point Po

Bik. 44

Bik. 43

Bik. 42

<b>P.O.B.</b>	
X =	2,650,100.00
Y =	410,830.00

MEXICO

TREASURE BAY GAS FIELD

NAD 1927 (South Zone)

Bik. 49

Bik. 50

Bik. 51

TR 35303
1,686 ± ACS.
FEB., 2003

Coalish. Point  
Coffish Point

Bik. 70

Bik. 69

Bik. 68

ST. BERNARD PARISH, LOUISIANA

SCALE : 1" = 3000'



**TRACT 35304 - Portion of Block 51, Chandeleur Sound Area, St. Bernard Parish, Louisiana**

All of the lands now or formerly constituting the beds and bottoms of all water bodies of every nature and description, and all islands and other lands formed by accretion, where allowed by law, or by reliction, and excepting tax adjudicated lands, belonging to the State of Louisiana and not presently under mineral lease on February 12, 2003, situated in St. Bernard Parish, Louisiana, and more particularly described as follows: Beginning at the Northwest corner of Block 51, Chandeleur Sound Area, having Coordinates of X = 2,650,100.00 and Y = 410,830.00; thence East 7,375.00 feet along the North line of said Block 51 to a point having Coordinates of X = 2,657,475.00 and Y = 410,830.00; thence South 14,750.00 feet to a point on the South line of said Block 51 having Coordinates of X = 2,657,475.00 and Y = 396,080.00; thence West 1,425.00 feet along the South line of said Block 51 to the Southeast corner of State Lease No. 17454 having Coordinates of X = 2,656,050.00 and Y = 396,080.00; thence North 2,170.00 feet along the East line of said State Lease No. 17454 to its Northeast corner having Coordinates of X = 2,656,050.00 and Y = 398,250.00; thence West 4,150.00 feet along the North line of said State Lease No. 17454 to its Northwest corner having Coordinates of X = 2,651,900.00 and Y = 398,250.00; thence South 2,170.00 feet along the West line of said State Lease No. 17454 to its Southwest corner, said corner also being a point on the South line of said Block 51 having Coordinates of X = 2,651,900.00 and Y = 396,080.00; thence West 1,800.00 feet along the South line of said Block 51 to its Southwest corner having Coordinates of X = 2,650,100.00 and Y = 396,080.00; thence North 14,750.00 feet along the West line of said Block 51 to the point of beginning, containing approximately **2,290.54 acres**, all as more particularly outlined on a plat on file in the Office of Mineral Resources, Department of Natural Resources, as provided by the applicant. All bearings, distances and coordinates are based on Louisiana Coordinate System of 1927, (North or South Zone), where applicable.

NOTE: The above description of the Tract nominated for lease has been provided and corrected, where required, exclusively by the nomination party. Any mineral lease selected from this Tract and awarded by the Louisiana State Mineral Board shall be without warranty of any kind, either express, implied, or statutory, including, but not limited to, the implied warranties of merchantability and fitness for a particular purpose. Should the mineral lease awarded by the Louisiana State Mineral Board be subsequently modified, cancelled or abrogated due to the existence of conflicting leases, operating agreements, private claims or other future obligations or conditions which may affect all or any portion of the leased Tract, it shall not relieve the Lessee of the obligation to pay any bonus due thereon to the Louisiana State Mineral Board, nor shall the Louisiana State Mineral Board be obligated to refund any consideration paid by the Lessor prior to such modification, cancellation, or abrogation, including, but not limited to, bonuses, rentals and royalties.

NOTE: The Department of Wildlife and Fisheries has designated certain areas in the coastal waters of the State of Louisiana as Oyster Seed Bed Areas. The exact location of those Seed Bed Areas must be obtained from the Department of Wildlife and Fisheries and any work done under a mineral lease from the State of Louisiana may necessarily be conducted in conformity with the rules and regulations promulgated by the said Department of Wildlife and Fisheries for Oyster Seed Bed Areas.

NOTE: The State of Louisiana does hereby reserve, and this lease shall be subject to, the imprescriptible right of surface use in the nature of a servitude in favor of the Department of Natural Resources, including its Offices and Commissions, for the sole purpose of implementing, constructing, servicing and maintaining approved coastal zone management and/or restoration projects. Utilization of any and all rights derived under this lease by the mineral lessee, its agents, successors or assigns, shall not interfere with nor hinder the reasonable surface use by the Department of Natural Resources, its Offices or Commissions, as herein above reserved.

Applicant: Energy Partners, Inc.

Bidder	Cash Payment	Price / Acre	Rental	Oil	Gas	Other

CHANDELEUR SOUND AREA

109

Bik. 43

Bik. 42

Bik. 41

P.O.B.  
X = 2,650,100.00  
Y = 410,830.00

101700

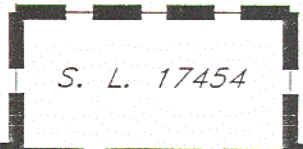
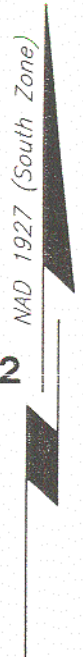


Bik. 50

Bik. 51

Bik. 52

TR 35304  
2,290.54 ± ACS.  
FEB., 2003



S. L. 17454

Bik. 69

Bik. 68

Bik. 67

ST. BERNARD PARISH, LOUISIANA

SCALE : 1" = 3000'