

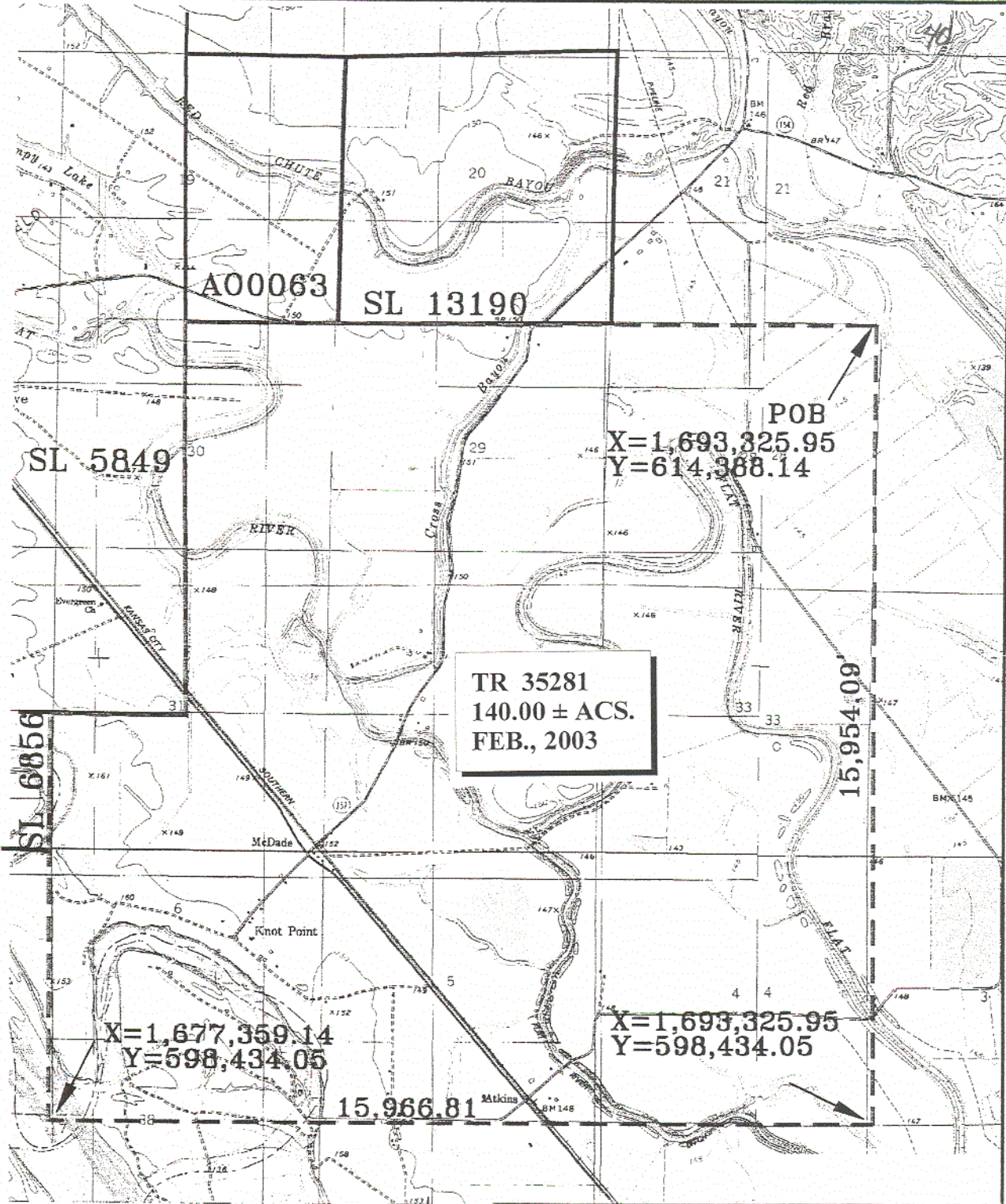
TRACT 35281 - Bossier and Caddo Parishes, Louisiana

All of the lands now or formerly constituting the beds and bottoms of all water bodies of every nature and description, and all islands and other lands formed by accretion, where allowed by law, or by reliction, and excepting tax adjudicated lands, belonging to the State of Louisiana and not presently under mineral lease on February 12, 2003, situated in Bossier and Caddo Parishes, Louisiana, and more particularly described as follows: Beginning at a point having Coordinates of X = 1,693,325.95 and Y = 614,388.14; thence South 15,954.09 feet to a point having Coordinates of X = 1,693,325.95 and Y = 598,434.05; thence West 15,966.81 feet to a point having Coordinates of X = 1,677,359.14 and Y = 598,434.05; thence Northerly to the most Eastern Southeast corner of State Lease No. 6856, as amended; thence continue Northerly along said East boundary of said State Lease No. 6856 to its most Eastern Northeast corner, also being a point on the South line of State Lease No. 5849; thence Easterly and Northerly along the boundaries of said State Lease No. 5849 to its point of intersection with A00063, as amended, being its Southwest corner; thence Easterly along the South line of said A00063 to its Southeast corner, also being the Southwest corner of State Lease No. 13190; thence Easterly along the South line of said State Lease No. 13190 to its Southeast corner; thence Easterly to the point of beginning, containing approximately **140.00 acres**, all as more particularly outlined on a plat on file in the Office of Mineral Resources, Department of Natural Resources, as provided by the applicant. All bearings, distances and coordinates are based on Louisiana Coordinate System of 1927, (North or South Zone), where applicable.

NOTE: The above description of the Tract nominated for lease has been provided and corrected, where required, exclusively by the nomination party. Any mineral lease selected from this Tract and awarded by the Louisiana State Mineral Board shall be without warranty of any kind, either express, implied, or statutory, including, but not limited to, the implied warranties of merchantability and fitness for a particular purpose. Should the mineral lease awarded by the Louisiana State Mineral Board be subsequently modified, cancelled or abrogated due to the existence of conflicting leases, operating agreements, private claims or other future obligations or conditions which may affect all or any portion of the leased Tract, it shall not relieve the Lessee of the obligation to pay any bonus due thereon to the Louisiana State Mineral Board, nor shall the Louisiana State Mineral Board be obligated to refund any consideration paid by the Lessor prior to such modification, cancellation, or abrogation, including, but not limited to, bonuses, rentals and royalties.

Applicant: Huddleston Land Services, Inc.

Bidder	Cash Payment	Price / Acre	Rental	Oil	Gas	Other



TR 35281
 140.00 ± ACS.
 FEB., 2003

T 15 & 16 N - R 11 W
 Bossier & Caddo Parishes, LA

Scale: 1" = 3,000'



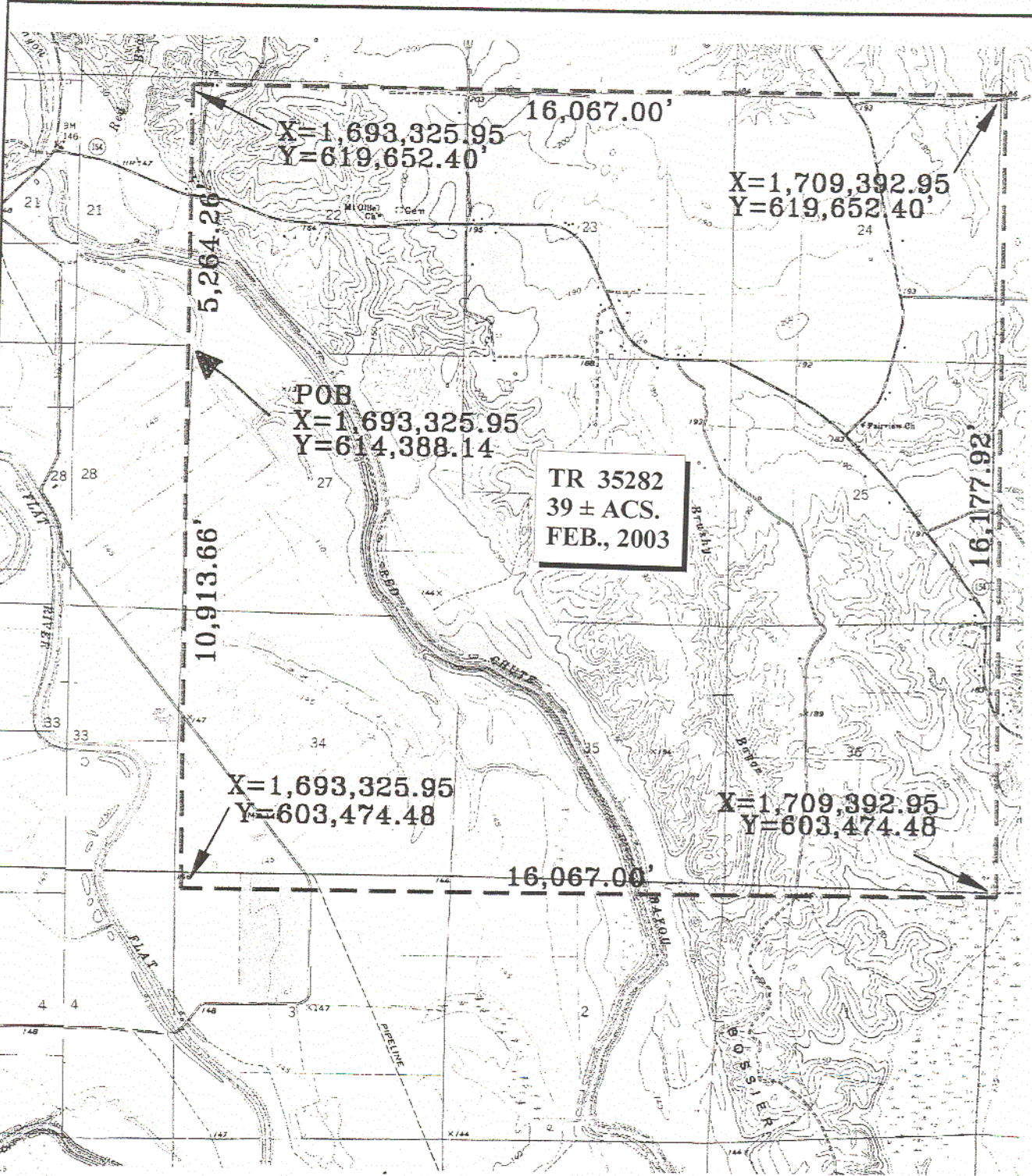
TRACT 35282 - Bossier Parish, Louisiana

All of the lands now or formerly constituting the beds and bottoms of all water bodies of every nature and description, and all islands and other lands formed by accretion, where allowed by law, or by reliction, and excepting tax adjudicated lands, belonging to the State of Louisiana and not presently under mineral lease on February 12, 2003, situated in Bossier Parish, Louisiana, and more particularly described as follows: Beginning at a point having Coordinates of X = 1,693,325.95 and Y = 614,388.14; thence North 5,264.26 feet to a point having Coordinates of X = 1,693,325.95 and Y = 619,652.40; thence East 16,067.00 feet to a point having Coordinates of X = 1,709,392.95 and Y = 619,652.40; thence South 16,177.92 to a point having Coordinates of X = 1,709,392.95 and Y = 603,474.48; thence West to a point having Coordinates of X = 1,693,325.95 and Y = 603,474.48; thence North 10,913.66 to the point of beginning, **LESS AND EXCEPT** that portion of the Loggy Bayou Wildlife Management Area that lies within the above described tract, containing approximately **39.00 acres**, all as more particularly outlined on a plat on file in the Office of Mineral Resources, Department of Natural Resources, as provided by the applicant. All bearings, distances and coordinates are based on Louisiana Coordinate System of 1927, (North or South Zone), where applicable.

NOTE: The above description of the Tract nominated for lease has been provided and corrected, where required, exclusively by the nomination party. Any mineral lease selected from this Tract and awarded by the Louisiana State Mineral Board shall be without warranty of any kind, either express, implied, or statutory, including, but not limited to, the implied warranties of merchantability and fitness for a particular purpose. Should the mineral lease awarded by the Louisiana State Mineral Board be subsequently modified, cancelled or abrogated due to the existence of conflicting leases, operating agreements, private claims or other future obligations or conditions which may affect all or any portion of the leased Tract, it shall not relieve the Lessee of the obligation to pay any bonus due thereon to the Louisiana State Mineral Board, nor shall the Louisiana State Mineral Board be obligated to refund any consideration paid by the Lessor prior to such modification, cancellation, or abrogation, including, but not limited to, bonuses, rentals and royalties.

Applicant: Huddleston Land Services, Inc.

Bidder	Cash Payment	Price / Acre	Rental	Oil	Gas	Other



T 15 & 16 N - R 11 W
 Bossier Parish, LA

Scale: 1" = 3,000'

TRACT 35283 - Bossier Parish, Louisiana

All of the lands now or formerly constituting the beds and bottoms of all water bodies of every nature and description, and all islands and other lands formed by accretion, where allowed by law, or by reliction, and excepting tax adjudicated lands, belonging to the State of Louisiana and not presently under mineral lease on February 12, 2003, situated in Bossier Parish, Louisiana, and more particularly described as follows: Beginning at a point having Coordinates of X = 1,698,605.65 and Y = 603,474.48; thence South 00 degrees 41 minutes 32 seconds West 7,729.22 feet to a point having Coordinates of X = 1,698,512.27 and Y = 595,745.82; thence South 89 degrees 07 minutes 23 seconds East 1,119.24 feet to a point having Coordinates of X = 1,699,631.38 and Y = 595,728.69; thence South 01 degrees 02 minutes 45 seconds West 2,496.07 feet to a point having Coordinates of X = 1,699,585.82 and Y = 593,233.04; thence South 89 degrees 55 minutes 11 seconds West 1,070.43 feet to a point having Coordinates of X = 1,698,515.39 and Y = 593,231.54; thence South 00 degrees 40 minutes 42 seconds West 2,426.24 feet to a point having Coordinates of X = 1,698,486.67 and Y = 590,805.47; thence North 89 degrees 28 minutes 59 seconds West 1,200.07 feet to a point having Coordinates of X = 1,697,286.65 and Y = 590,816.30; thence North 00 degrees 39 minutes 43 seconds East 2,388.84 feet to a point having Coordinates of X = 1,697,314.25 and Y = 593,204.98; thence North 89 degrees 22 minutes 18 seconds West 3,224.88 feet to a point having Coordinates of X = 1,694,089.56 and Y = 593,240.35; thence N 00 degrees 15 minutes 56 seconds East 5,531.59 feet to a point having Coordinates of X = 1,694,115.21 and Y = 598,771.88; thence North 89 degrees 21 minutes 12 seconds West 789.31 feet to a point having Coordinates of X = 1,693,325.95 and Y = 598,780.79; thence North 4,693.69 feet to a point having Coordinates of X = 1,693,325.95 and Y = 603,474.48; thence East 5,279.70 feet to the point of beginning, **LESS AND EXCEPT** that portion, if any, of State Lease No. 16397, as amended, that may lie within the above described tract, containing approximately **19.45 acres**, all as more particularly outlined on a plat on file in the Office of Mineral Resources, Department of Natural Resources, as provided by the applicant. All bearings, distances and coordinates are based on Louisiana Coordinate System of 1927, (North or South Zone), where applicable.

NOTE: The above description of the Tract nominated for lease has been provided and corrected, where required, exclusively by the nomination party. Any mineral lease selected from this Tract and awarded by the Louisiana State Mineral Board shall be without warranty of any kind, either express, implied, or statutory, including, but not limited to, the implied warranties of merchantability and fitness for a particular purpose. Should the mineral lease awarded by the Louisiana State Mineral Board be subsequently modified, cancelled or abrogated due to the existence of conflicting leases, operating agreements, private claims or other future obligations or conditions which may affect all or any portion of the leased Tract, it shall not relieve the Lessee of the obligation to pay any bonus due thereon to the Louisiana State Mineral Board, nor shall

the Louisiana State Mineral Board be obligated to refund any consideration paid by the Lessor prior to such modification, cancellation, or abrogation, including, but not limited to, bonuses, rentals and royalties.

Applicant: Petro-Chem Operating Co., Inc.

Bidder	Cash Payment	Price / Acre	Rental	Oil	Gas	Other

R 11 W

46



3

P.O.B.
X=1,698,605.65
Y=693,474.48

TR 35283
19.45 ± ACS.
FEB., 2003

10

11

15

S.L.16397

T
15
N

NOT TO SCALE

TRACT 35284 - Iberia Parish, Louisiana

All of the lands now or formerly constituting the beds and bottoms of all water bodies of every nature and description, and all islands and other lands formed by accretion, where allowed by law, or by reliction, and excepting tax adjudicated lands, belonging to the State of Louisiana and not presently under mineral lease on February 12, 2003, situated in Iberia Parish, Louisiana, and more particularly described as follows: Beginning at the Northwest corner of State Lease No. 17284 having Coordinates of X = 1,886,622.00 and Y = 305,362.00; thence South 4,094.00 feet along the Western boundary of said State Lease No. 17284 to a point having Coordinates of X = 1,886,622.00 and Y = 301,268.00; thence West 5,000.00 feet to a point having Coordinates of X = 1,881,622.00 and Y = 301,268.00; thence North 9,529.42 feet to a point having Coordinates of X = 1,881,622.00 and Y = 310,797.42; thence East 11,378.00 feet to a point having Coordinates of X = 1,893,000.00 and Y = 310,797.42; thence South 5,897.42 feet to a point having Coordinates of X = 1,893,000.00 and Y = 304,900.00; thence East 5,602.00 feet to a point having Coordinates of X = 1,898,602.00 and Y = 304,900.00; thence South 3,632.00 feet to a point having Coordinates of X = 1,898,602.00 and Y = 301,268.00; thence West 5,000.00 feet to the Southernmost Northeast corner of said State Lease No. 17284 having Coordinates of X = 1,893,602.00 and Y = 301,268.00; thence North 46 degrees 05 minutes 04 seconds West 5,902.57 feet along a Northern boundary of said State Lease No. 17284 to its Northernmost Northeast corner having Coordinates of X = 1,889,350.00 and Y = 305,362.00; thence West 2,728.00 feet along a Northern boundary of said State Lease No. 17284 to the point of beginning, containing approximately **2,500.00 acres**, all as more particularly outlined on a plat on file in the Office of Mineral Resources, Department of Natural Resources, as provided by the applicant. All bearings, distances and coordinates are based on Louisiana Coordinate System of 1927, (North or South Zone), where applicable.

NOTE: The above description of the Tract nominated for lease has been provided and corrected, where required, exclusively by the nomination party. Any mineral lease selected from this Tract and awarded by the Louisiana State Mineral Board shall be without warranty of any kind, either express, implied, or statutory, including, but not limited to, the implied warranties of merchantability and fitness for a particular purpose. Should the mineral lease awarded by the Louisiana State Mineral Board be subsequently modified, cancelled or abrogated due to the existence of conflicting leases, operating agreements, private claims or other future obligations or conditions which may affect all or any portion of the leased Tract, it shall not relieve the Lessee of the obligation to pay any bonus due thereon to the Louisiana State Mineral Board, nor shall the Louisiana State Mineral Board be obligated to refund any consideration paid by the Lessor prior to such modification, cancellation, or abrogation, including, but not limited to, bonuses, rentals and royalties.

NOTE: The Department of Wildlife and Fisheries has designated certain areas in the coastal waters of the State of Louisiana as Oyster Seed Bed

Areas. The exact location of those Seed Bed Areas must be obtained from the Department of Wildlife and Fisheries and any work done under a mineral lease from the State of Louisiana may necessarily be conducted in conformity with the rules and regulations promulgated by the said Department of Wildlife and Fisheries for Oyster Seed Bed Areas.

NOTE: The State of Louisiana does hereby reserve, and this lease shall be subject to, the imprescriptible right of surface use in the nature of a servitude in favor of the Department of Natural Resources, including its Offices and Commissions, for the sole purpose of implementing, constructing, servicing and maintaining approved coastal zone management and/or restoration projects. Utilization of any and all rights derived under this lease by the mineral lessee, its agents, successors or assigns, shall not interfere with nor hinder the reasonable surface use by the Department of Natural Resources, its Offices or Commissions, as herein above reserved.

Applicant: Starks Oil Company

Bidder	Cash Payment	Price / Acre	Rental	Oil	Gas	Other

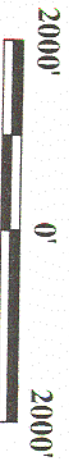
TR 35284
2,500.00 ± ACS.
FEB., 2003

P.O.B.
X = 1,886,622.00'
Y = 305,362.00'

S.L. 17284

EAST COTE
BLANCHE BAY

IBERIA PARISH, LOUISIANA
EAST COTE BLANCHE BAY



TRACT 35285 - Terrebonne Parish, Louisiana

All of the lands now or formerly constituting the beds and bottoms of all water bodies of every nature and description, and all islands and other lands formed by accretion, where allowed by law, or by reliction, and excepting tax adjudicated lands, belonging to the State of Louisiana and not presently under mineral lease on February 12, 2003, situated in Terrebonne Parish, Louisiana, and more particularly described as follows: Beginning at a point having Coordinates of X = 2,136,201.80 and Y = 248,268.00; thence West 11,300.80 feet to a point having Coordinates of X = 2,124,901.00 and Y = 248,268.00; thence North 2,165.00 feet to a point having Coordinates of X = 2,124,901.00 and Y = 250,433.00; thence West 4,875.00 feet to a point having Coordinates of X = 2,120,026.00 and Y = 250,433.00; thence North 2,799.93 feet to a point on the South line of State Lease No. 3475, as amended, having Coordinates of X = 2,120,026.00 and Y = 253,232.93; thence North 89 degrees 08 minutes 28 seconds East 7,887.12 feet along the Southern boundary of said State Lease No. 3475, as amended, to its Southeast corner having Coordinates of X = 2,127,912.24 and Y = 253,351.15; thence North 01 degrees 00 minutes 41 seconds West 4,455.61 feet along the Eastern boundary of said State Lease No. 3475, as amended, to a point on the boundary of State Lease No. 12105, as amended, having Coordinates of X = 2,127,833.59 and Y = 257,806.08; thence along boundary of said State Lease No. 12105, as amended, the following courses: Northeasterly on an arc having a radius of 1,750.00 feet and a center at X = 2,126,747.50 and Y = 259,178.27 to a point having Coordinates of X = 2,128,235.53 and Y = 258,257.26 and Northeasterly on an arc having a radius of 1,000.00 feet and a center at X = 2,127,385.23 and Y = 258,783.55 to a point having Coordinates of X = 2,128,374.67 and Y = 258,638.67; thence North 89 degrees 08 minutes 28 seconds East 7,359.62 feet to a point on the West line of State Lease No. 17602 having Coordinates of X = 2,135,733.47 and Y = 258,748.98; thence South 02 degrees 06 minutes 47 seconds East 348.47 feet along the West line of said State Lease No. 17602 to its Southwest corner having Coordinates of X = 2,135,746.32 and Y = 258,400.75; thence East 455.48 feet along the South line of said State Lease No. 17602 to a point having Coordinates of X = 2,136,201.80 and Y = 258,400.75; thence South 10,132.75 feet to the point of beginning, containing approximately **535 acres**, all as more particularly outlined on a plat on file in the Office of Mineral Resources, Department of Natural Resources, as provided by the applicant. All bearings, distances and coordinates are based on Louisiana Coordinate System of 1927, (North or South Zone), where applicable.

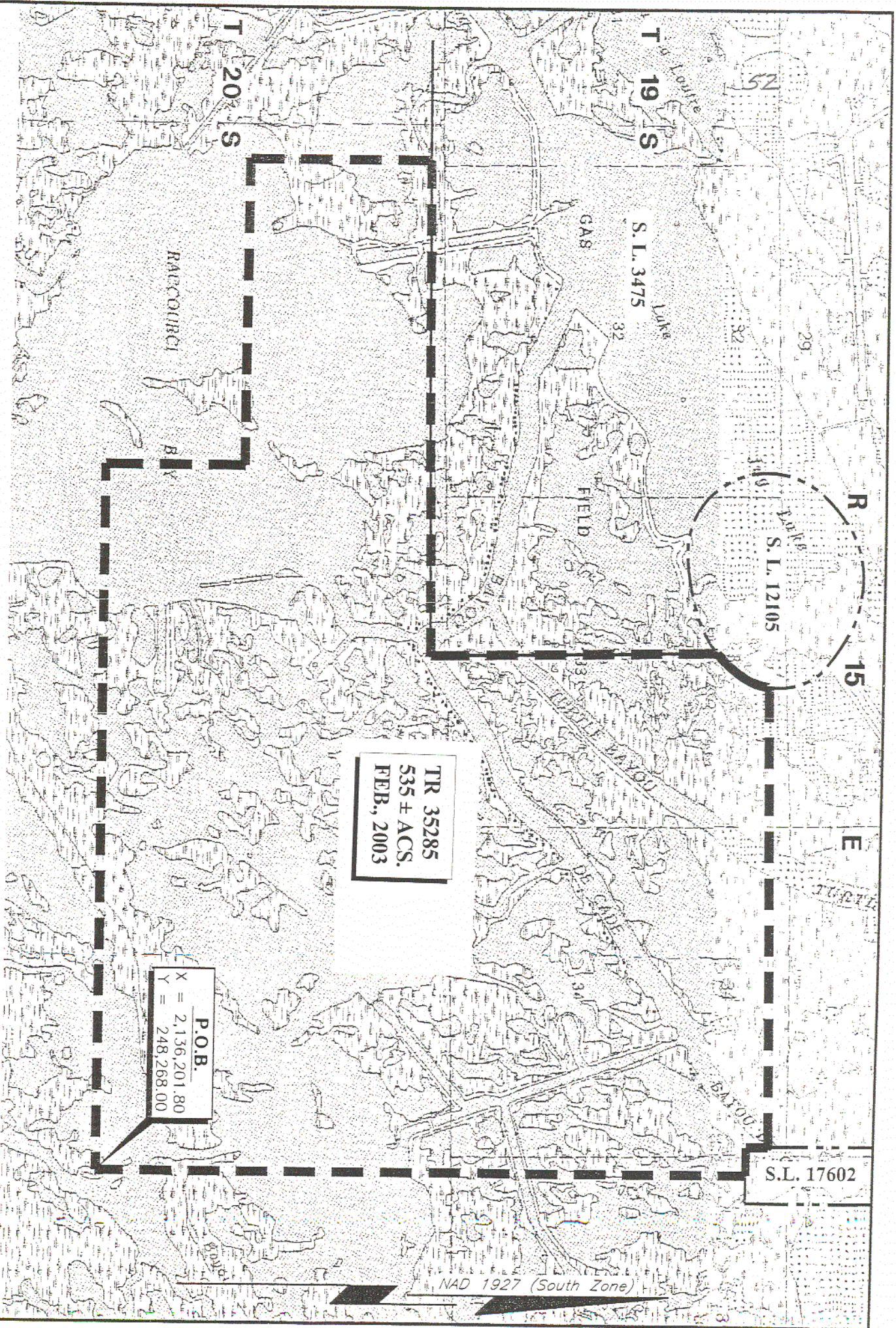
NOTE: The above description of the Tract nominated for lease has been provided and corrected, where required, exclusively by the nomination party. Any mineral lease selected from this Tract and awarded by the Louisiana State Mineral Board shall be without warranty of any kind, either express, implied, or statutory, including, but not limited to, the implied warranties of merchantability and fitness for a particular purpose. Should the mineral lease awarded by the Louisiana State Mineral Board be subsequently modified, cancelled or abrogated due to the

existence of conflicting leases, operating agreements, private claims or other future obligations or conditions which may affect all or any portion of the leased Tract, it shall not relieve the Lessee of the obligation to pay any bonus due thereon to the Louisiana State Mineral Board, nor shall the Louisiana State Mineral Board be obligated to refund any consideration paid by the Lessor prior to such modification, cancellation, or abrogation, including, but not limited to, bonuses, rentals and royalties.

NOTE: The State of Louisiana does hereby reserve, and this lease shall be subject to, the imprescriptible right of surface use in the nature of a servitude in favor of the Department of Natural Resources, including its Offices and Commissions, for the sole purpose of implementing, constructing, servicing and maintaining approved coastal zone management and/or restoration projects. Utilization of any and all rights derived under this lease by the mineral lessee, its agents, successors or assigns, shall not interfere with nor hinder the reasonable surface use by the Department of Natural Resources, its Offices or Commissions, as herein above reserved.

Applicant: Arpent Energy Company

Bidder	Cash Payment	Price / Acre	Rental	Oil	Gas	Other



TR 35285
 535 ± ACS.
 FEB., 2003

P.O.B.
 X = 2,136,201.80
 Y = 248,268.00

S.L. 17602

NAD 1927 (South Zone)

TERREBONNE PARISH, LOUISIANA
 SCALE : 1" = 2000'

TRACT 35286 - Terrebonne Parish, Louisiana

All of the lands now or formerly constituting the beds and bottoms of all water bodies of every nature and description, and all islands and other lands formed by accretion, where allowed by law, or by reliction, and excepting tax adjudicated lands, belonging to the State of Louisiana and not presently under mineral lease on February 12, 2003, situated in Terrebonne Parish, Louisiana, and more particularly described as follows: Beginning at a point having Coordinates of X = 2,116,400.00 and Y = 240,384.00; thence North 12,794.57 feet to a point on the South line of State Lease No. 3475, as amended, having Coordinates of X = 2,116,400.00 and Y = 253,178.57; thence North 89 degrees 08 minutes 28 seconds East 3,626.41 feet along the South line of said State Lease No.3475, as amended, to a point having Coordinates of X = 2,120,026.00 and Y = 253,232.93; thence South 2,799.93 feet to a point having Coordinates of X = 2,120,026.00 and Y = 250,433.00; thence East 4,875.00 feet to a point having Coordinates of X = 2,124,901.00 and Y = 250,433.00; thence South 2,165.00 feet to a point having Coordinates of X = 2,124,901.00 and Y = 248,268.00; thence East 9,754.00 feet to a point having Coordinates of X = 2,134,655.00 and Y = 248,268.00; thence South 7,884.00 feet to a point having Coordinates of X = 2,134,655.00 and Y = 240,384.00; thence West 18,255.00 feet to the point of beginning, containing approximately **1,687 acres**, all as more particularly outlined on a plat on file in the Office of Mineral Resources, Department of Natural Resources, as provided by the applicant. All bearings, distances and coordinates are based on Louisiana Coordinate System of 1927, (North or South Zone), where applicable.

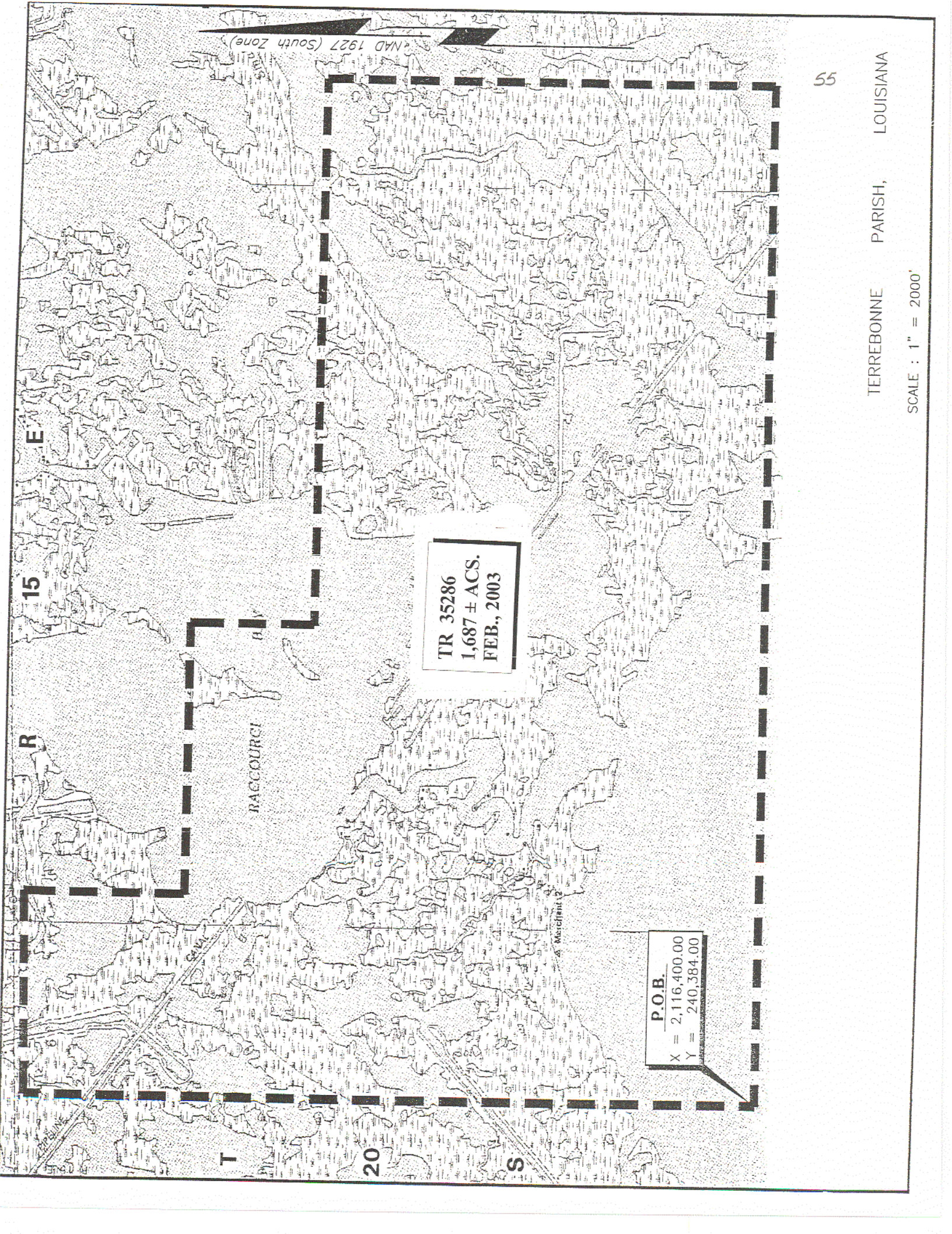
NOTE: The above description of the Tract nominated for lease has been provided and corrected, where required, exclusively by the nomination party. Any mineral lease selected from this Tract and awarded by the Louisiana State Mineral Board shall be without warranty of any kind, either express, implied, or statutory, including, but not limited to, the implied warranties of merchantability and fitness for a particular purpose. Should the mineral lease awarded by the Louisiana State Mineral Board be subsequently modified, cancelled or abrogated due to the existence of conflicting leases, operating agreements, private claims or other future obligations or conditions which may affect all or any portion of the leased Tract, it shall not relieve the Lessee of the obligation to pay any bonus due thereon to the Louisiana State Mineral Board, nor shall the Louisiana State Mineral Board be obligated to refund any consideration paid by the Lessor prior to such modification, cancellation, or abrogation, including, but not limited to, bonuses, rentals and royalties.

NOTE: The Department of Wildlife and Fisheries has designated certain areas in the coastal waters of the State of Louisiana as Oyster Seed Bed Areas. The exact location of those Seed Bed Areas must be obtained from the Department of Wildlife and Fisheries and any work done under a mineral lease from the State of Louisiana may necessarily be conducted in conformity with the rules and regulations promulgated by the said Department of Wildlife and Fisheries for Oyster Seed Bed Areas.

NOTE: The State of Louisiana does hereby reserve, and this lease shall be subject to, the imprescriptible right of surface use in the nature of a servitude in favor of the Department of Natural Resources, including its Offices and Commissions, for the sole purpose of implementing, constructing, servicing and maintaining approved coastal zone management and/or restoration projects. Utilization of any and all rights derived under this lease by the mineral lessee, its agents, successors or assigns, shall not interfere with nor hinder the reasonable surface use by the Department of Natural Resources, its Offices or Commissions, as herein above reserved.

Applicant: Arpent Energy Company

Bidder	Cash Payment	Price / Acre	Rental	Oil	Gas	Other



NAD 1927 (South Zone)

TR 35286
1,687 ± ACS.
FEB., 2003

P.O.B.
X = 2,116,400.00
Y = 240,384.00

TRACT 35287 - Terrebonne Parish, Louisiana

All of the lands now or formerly constituting the beds and bottoms of all water bodies of every nature and description, and all islands and other lands formed by accretion, where allowed by law, or by reliction, and excepting tax adjudicated lands, belonging to the State of Louisiana and not presently under mineral lease on February 12, 2003, situated in Terrebonne Parish, Louisiana, and more particularly described as follows: Beginning at a point having Coordinates of X = 2,116,400.00 and Y = 240,384.00; thence East 18,255.00 feet to a point having Coordinates of X = 2,134,655.00 and Y = 240,384.00; thence South 5,784.00 feet to a point having Coordinates of X = 2,134,655.00 and Y = 234,600.00; thence West 18,255.00 feet to a point having Coordinates of X = 2,116,400.00 and Y = 234,600.00; thence North 5,784.00 feet to the point of beginning, containing approximately **1,593 acres**, all as more particularly outlined on a plat on file in the Office of Mineral Resources, Department of Natural Resources, as provided by the applicant. All bearings, distances and coordinates are based on Louisiana Coordinate System of 1927, (North or South Zone), where applicable.

NOTE: The above description of the Tract nominated for lease has been provided and corrected, where required, exclusively by the nomination party. Any mineral lease selected from this Tract and awarded by the Louisiana State Mineral Board shall be without warranty of any kind, either express, implied, or statutory, including, but not limited to, the implied warranties of merchantability and fitness for a particular purpose. Should the mineral lease awarded by the Louisiana State Mineral Board be subsequently modified, cancelled or abrogated due to the existence of conflicting leases, operating agreements, private claims or other future obligations or conditions which may affect all or any portion of the leased Tract, it shall not relieve the Lessee of the obligation to pay any bonus due thereon to the Louisiana State Mineral Board, nor shall the Louisiana State Mineral Board be obligated to refund any consideration paid by the Lessor prior to such modification, cancellation, or abrogation, including, but not limited to, bonuses, rentals and royalties.

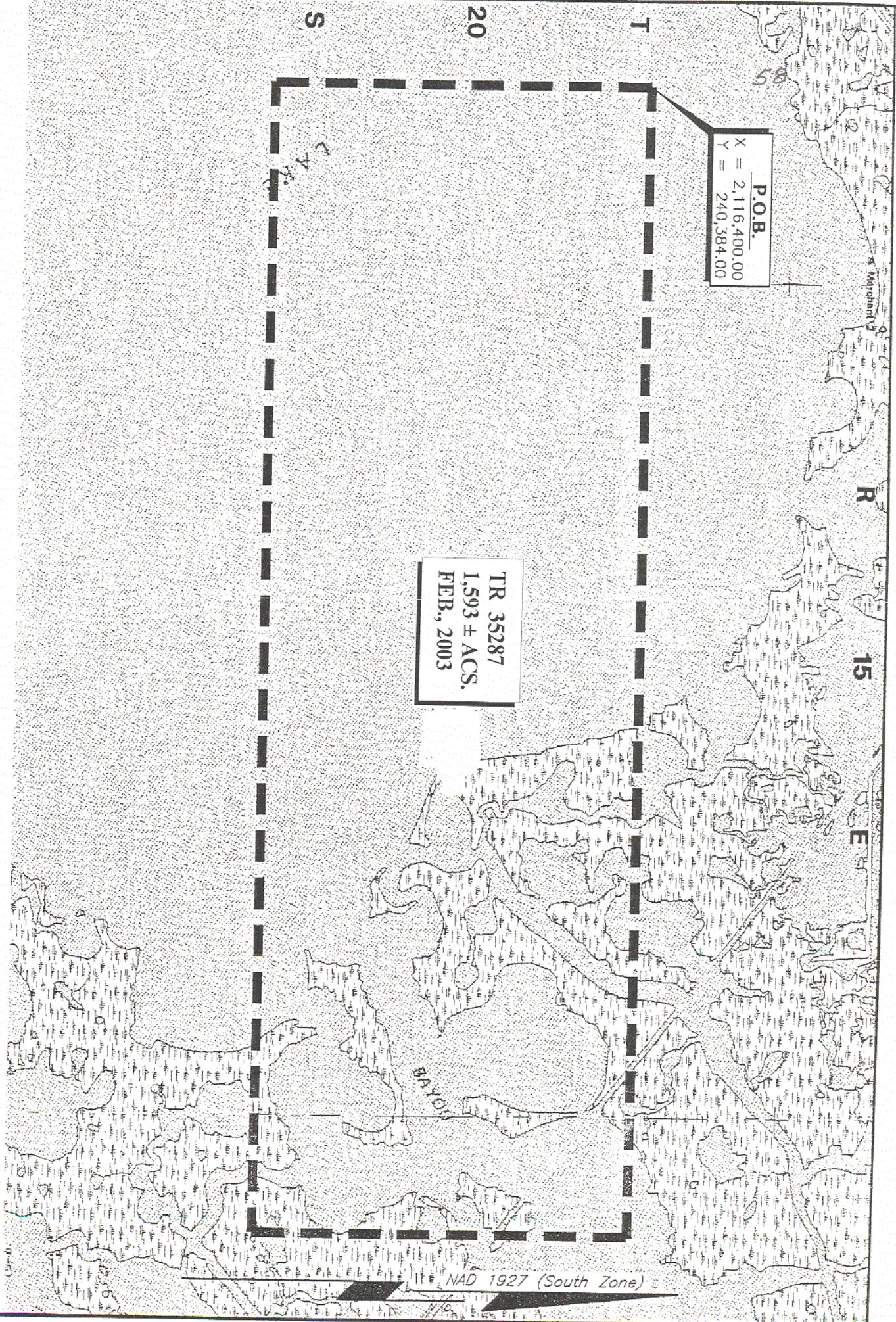
NOTE: The Department of Wildlife and Fisheries has designated certain areas in the coastal waters of the State of Louisiana as Oyster Seed Bed Areas. The exact location of those Seed Bed Areas must be obtained from the Department of Wildlife and Fisheries and any work done under a mineral lease from the State of Louisiana may necessarily be conducted in conformity with the rules and regulations promulgated by the said Department of Wildlife and Fisheries for Oyster Seed Bed Areas.

NOTE: The State of Louisiana does hereby reserve, and this lease shall be subject to, the imprescriptible right of surface use in the nature of a servitude in favor of the Department of Natural Resources, including its Offices and Commissions, for the sole purpose of implementing, constructing, servicing and maintaining approved coastal zone management and/or restoration projects. Utilization of any and all rights derived

under this lease by the mineral lessee, its agents, successors or assigns, shall not interfere with nor hinder the reasonable surface use by the Department of Natural Resources, its Offices or Commissions, as herein above reserved.

Applicant: Arpent Energy Company

Bidder	Cash Payment	Price / Acre	Rental	Oil	Gas	Other



P.O.B.
X = 2,116,400.00
Y = 240,384.00

TR 35287
1,593 ± ACS.
FEB., 2003

NAD 1927 (South Zone)

TERREBONNE PARISH, LOUISIANA
SCALE : 1" = 2000'

TRACT 35288 - Terrebonne Parish, Louisiana

All of the land adjudicated to and acquired by the State of Louisiana in and through a proper tax sale, including surface and mineral rights, owned by and not already under valid mineral lease from the State of Louisiana on February 12, 2003, situated in Terrebonne Parish, Louisiana, and being more fully described as follows: A certain tract of land located in Sections 20 and/or 21, Township 19 South, Range 18 East, Terrebonne Parish, Louisiana, being the same property adjudicated to the State of Louisiana in the name of Wilson E. Picou for nonpayment of 1926 taxes, bounded above by Joseph Authement and below by Paul Henry, and sold to Wallace Eschete, August 4, 1934, Patent No. 12686, containing approximately **5 acres**, all as more particularly outlined on a plat on file in the Office of Mineral Resources, Department of Natural Resources, as provided by the applicant. All bearings, distances and coordinates are based on Louisiana Coordinate System of 1927, (North or South Zone), where applicable.

NOTE: The above description of the Tract nominated for lease has been provided and corrected, where required, exclusively by the nomination party. Any mineral lease selected from this Tract and awarded by the Louisiana State Mineral Board shall be without warranty of any kind, either express, implied, or statutory, including, but not limited to, the implied warranties of merchantability and fitness for a particular purpose. Should the mineral lease awarded by the Louisiana State Mineral Board be subsequently modified, cancelled or abrogated due to the existence of conflicting leases, operating agreements, private claims or other future obligations or conditions which may affect all or any portion of the leased Tract, it shall not relieve the Lessee of the obligation to pay any bonus due thereon to the Louisiana State Mineral Board, nor shall the Louisiana State Mineral Board be obligated to refund any consideration paid by the Lessor prior to such modification, cancellation, or abrogation, including, but not limited to, bonuses, rentals and royalties.

NOTE: The Department of Wildlife and Fisheries has designated certain areas in the coastal waters of the State of Louisiana as Oyster Seed Bed Areas. The exact location of those Seed Bed Areas must be obtained from the Department of Wildlife and Fisheries and any work done under a mineral lease from the State of Louisiana may necessarily be conducted in conformity with the rules and regulations promulgated by the said Department of Wildlife and Fisheries for Oyster Seed Bed Areas.

NOTE: The State of Louisiana does hereby reserve, and this lease shall be subject to, the imprescriptible right of surface use in the nature of a servitude in favor of the Department of Natural Resources, including its Offices and Commissions, for the sole purpose of implementing, constructing, servicing and maintaining approved coastal zone management and/or restoration projects. Utilization of any and all rights derived under this lease by the mineral lessee, its agents, successors or assigns, shall not interfere with nor hinder the reasonable surface use by the

Department of Natural Resources, its Offices or Commissions, as herein above reserved.

Applicant: Ken Savage & Associates, Inc.

Bidder	Cash Payment	Price / Acre	Rental	Oil	Gas	Other

R18E

TR 35288
5 ± ACS.
FEB., 2003

T
19
S

LAKE BOUDREAUX
GAS FIELD

LAKE BOUDREAUX
GAS FIELD

Charvin Ch.

Little Caillou Ch.

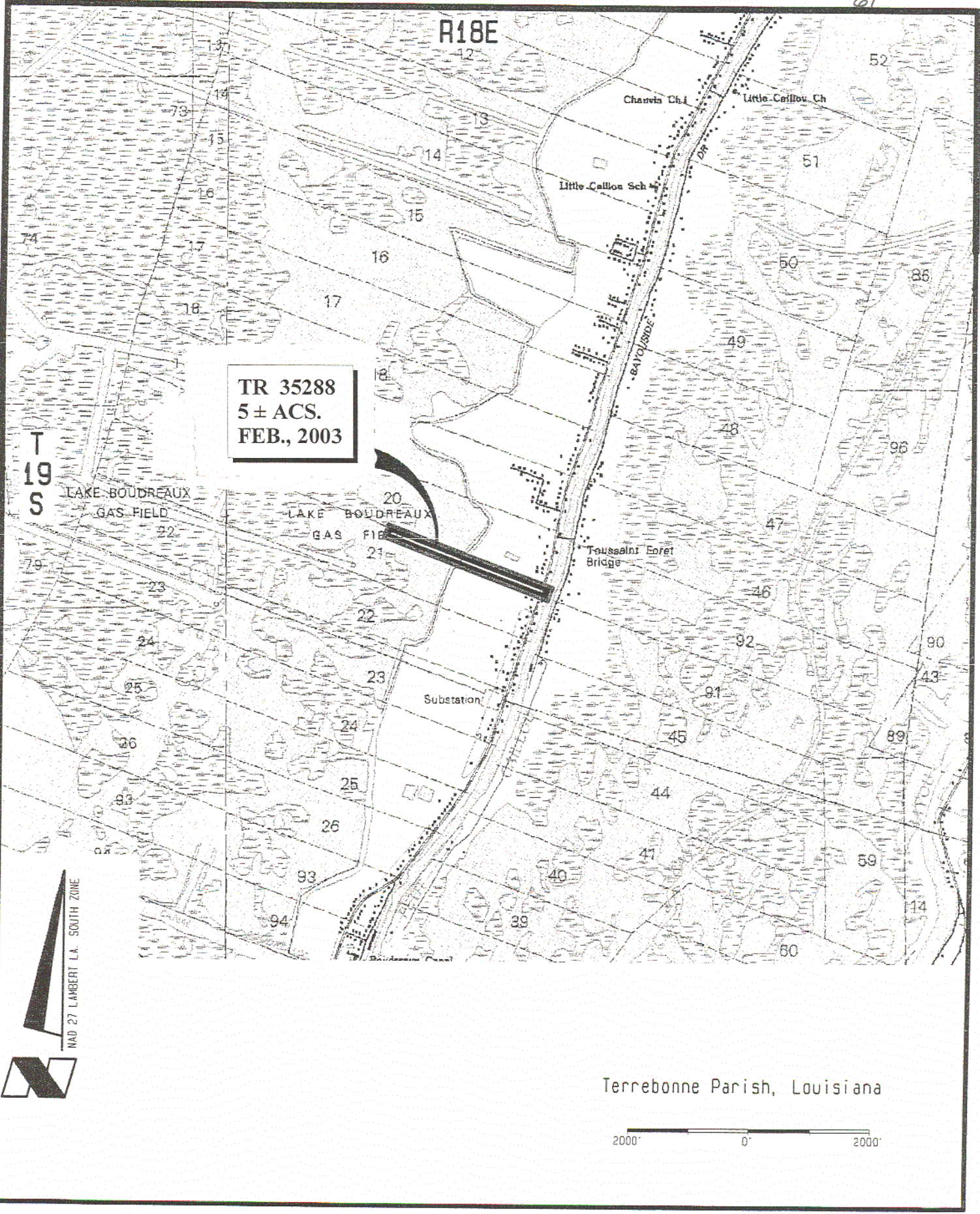
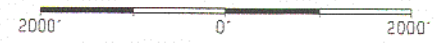
Little Caillou Sch.

Toussaint Forêt
Bridge

Substation



Terrebonne Parish, Louisiana



TRACT 35289 - Lafourche Parish, Louisiana

All of the lands now or formerly constituting the beds and bottoms of all water bodies of every nature and description, and all islands and other lands formed by accretion, where allowed by law, or by reliction, and excepting tax adjudicated lands, belonging to the State of Louisiana and not presently under mineral lease on February 12, 2003, situated in Lafourche Parish, Louisiana, and more particularly described as follows: Beginning at a point having Coordinates of X = 2,289,643.78 and Y = 333,451.67; thence North 77 degrees 50 minutes 50 seconds West 14,000.00 feet to a point having Coordinates of X = 2,275,957.52 and Y = 336,398.90; thence North 12 degrees 09 minutes 10 seconds East 2,500.00 feet to a point having Coordinates of X = 2,276,483.81 and Y = 338,842.88; thence South 77 degrees 50 minutes 50 seconds East 14,000.00 feet to a point having Coordinates of X = 2,290,170.07 and Y = 335,895.64; thence South 12 degrees 09 minutes 10 seconds West 2,500.00 feet to the point of beginning, containing approximately **62 acres**, all as more particularly outlined on a plat on file in the Office of Mineral Resources, Department of Natural Resources, as provided by the applicant. All bearings, distances and coordinates are based on Louisiana Coordinate System of 1927, (North or South Zone), where applicable.

NOTE: The above description of the Tract nominated for lease has been provided and corrected, where required, exclusively by the nomination party. Any mineral lease selected from this Tract and awarded by the Louisiana State Mineral Board shall be without warranty of any kind, either express, implied, or statutory, including, but not limited to, the implied warranties of merchantability and fitness for a particular purpose. Should the mineral lease awarded by the Louisiana State Mineral Board be subsequently modified, cancelled or abrogated due to the existence of conflicting leases, operating agreements, private claims or other future obligations or conditions which may affect all or any portion of the leased Tract, it shall not relieve the Lessee of the obligation to pay any bonus due thereon to the Louisiana State Mineral Board, nor shall the Louisiana State Mineral Board be obligated to refund any consideration paid by the Lessor prior to such modification, cancellation, or abrogation, including, but not limited to, bonuses, rentals and royalties.

NOTE: The State of Louisiana does hereby reserve, and this lease shall be subject to, the imprescriptible right of surface use in the nature of a servitude in favor of the Department of Natural Resources, including its Offices and Commissions, for the sole purpose of implementing, constructing, servicing and maintaining approved coastal zone management and/or restoration projects. Utilization of any and all rights derived under this lease by the mineral lessee, its agents, successors or assigns, shall not interfere with nor hinder the reasonable surface use by the Department of Natural Resources, its Offices or Commissions, as herein above reserved.

Applicant: Larry S. Minter, Inc.

Bidder	Cash Payment	Price / Acre	Rental	Oil	Gas	Other

LAFORCHE PARISH

1st Eau

Bien

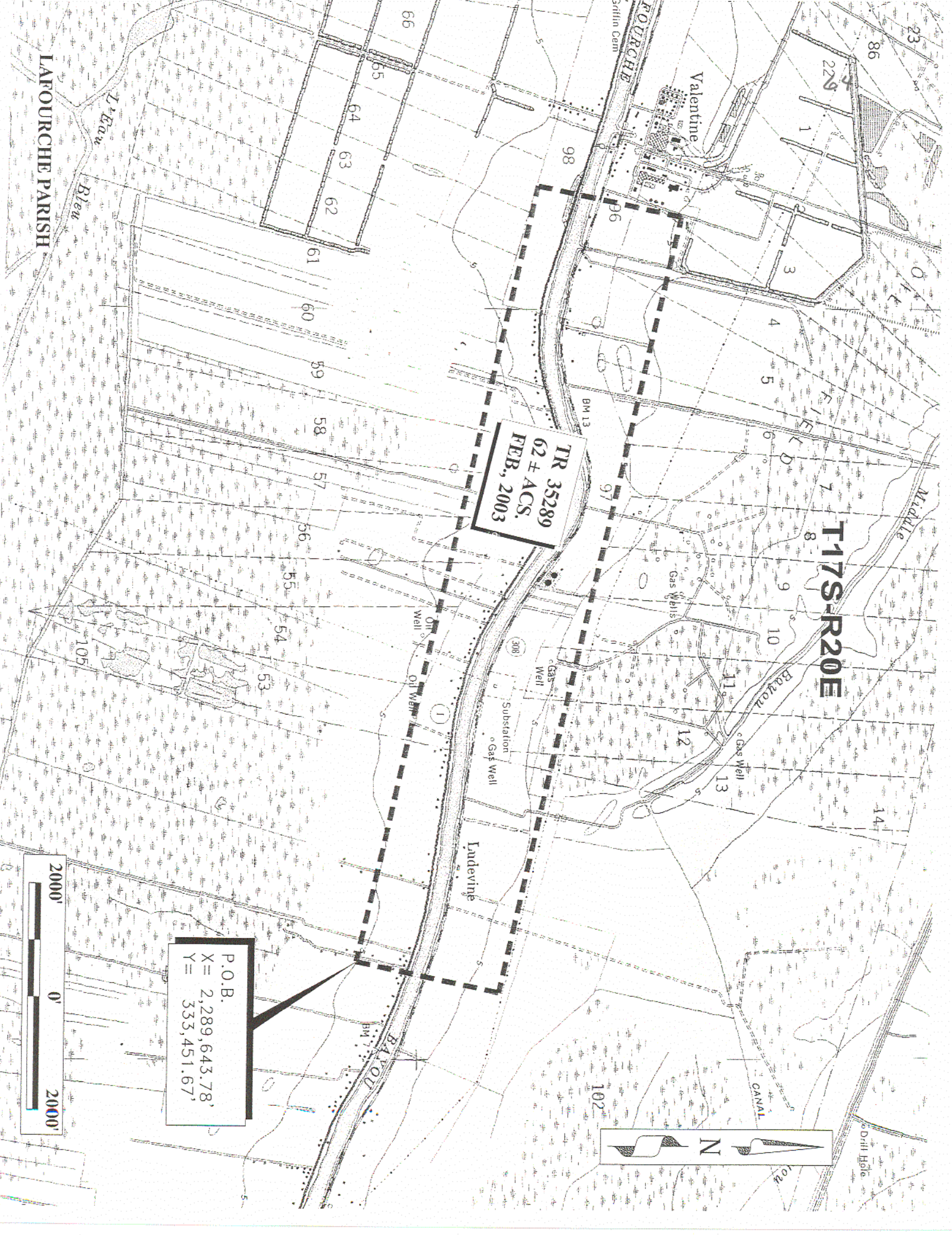
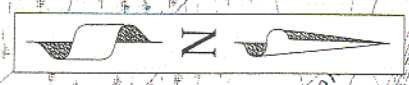
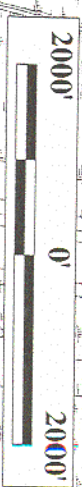
FOURCHE

Valentine

T17S-R20E

TR 35289
62 ± ACS.
FEB., 2003

P.O.B.
X = 2,289,643.78'
Y = 333,451.67'



TRACT 35290 - Lafourche Parish, Louisiana

All of the lands now or formerly constituting the beds and bottoms of all water bodies of every nature and description, and all islands and other lands formed by accretion, where allowed by law, or by reliction, and excepting tax adjudicated lands, belonging to the State of Louisiana and not presently under mineral lease on February 12, 2003, situated in Lafourche Parish, Louisiana, and more particularly described as follows: Beginning at a point having Coordinates of X = 2,302,535.85 and Y = 258,480.33; thence East approximately 2,474 feet to a point on the West line of State Lease No. 378, as amended; thence Southerly approximately 8,281 feet along the West line of said State Lease No. 378 to a point of intersection with Office of Conservation Order No. 14-QQ-2, effective June 6, 2000, for the 2700' RC SUA; thence North 34 degrees 06 minutes 15 seconds West approximately 4,800 feet along the East line of said 2700' RC SUA to a point having Coordinates of X = 2,302,535.85 and Y = 254,176.28; thence North 4,304.05 feet to the point of beginning, containing approximately **10.00 acres**, all as more particularly outlined on a plat on file in the Office of Mineral Resources, Department of Natural Resources, as provided by the applicant. All bearings, distances and coordinates are based on Louisiana Coordinate System of 1927, (North or South Zone), where applicable.

NOTE: The above description of the Tract nominated for lease has been provided and corrected, where required, exclusively by the nomination party. Any mineral lease selected from this Tract and awarded by the Louisiana State Mineral Board shall be without warranty of any kind, either express, implied, or statutory, including, but not limited to, the implied warranties of merchantability and fitness for a particular purpose. Should the mineral lease awarded by the Louisiana State Mineral Board be subsequently modified, cancelled or abrogated due to the existence of conflicting leases, operating agreements, private claims or other future obligations or conditions which may affect all or any portion of the leased Tract, it shall not relieve the Lessee of the obligation to pay any bonus due thereon to the Louisiana State Mineral Board, nor shall the Louisiana State Mineral Board be obligated to refund any consideration paid by the Lessor prior to such modification, cancellation, or abrogation, including, but not limited to, bonuses, rentals and royalties.

NOTE: The Department of Wildlife and Fisheries has designated certain areas in the coastal waters of the State of Louisiana as Oyster Seed Bed Areas. The exact location of those Seed Bed Areas must be obtained from the Department of Wildlife and Fisheries and any work done under a mineral lease from the State of Louisiana may necessarily be conducted in conformity with the rules and regulations promulgated by the said Department of Wildlife and Fisheries for Oyster Seed Bed Areas.

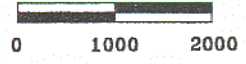
NOTE: The State of Louisiana does hereby reserve, and this lease shall be subject to, the imprescriptible right of surface use in the nature of a servitude in favor of the Department of Natural Resources, including its

Offices and Commissions, for the sole purpose of implementing, constructing, servicing and maintaining approved coastal zone management and/or restoration projects. Utilization of any and all rights derived under this lease by the mineral lessee, its agents, successors or assigns, shall not interfere with nor hinder the reasonable surface use by the Department of Natural Resources, its Offices or Commissions, as herein above reserved.

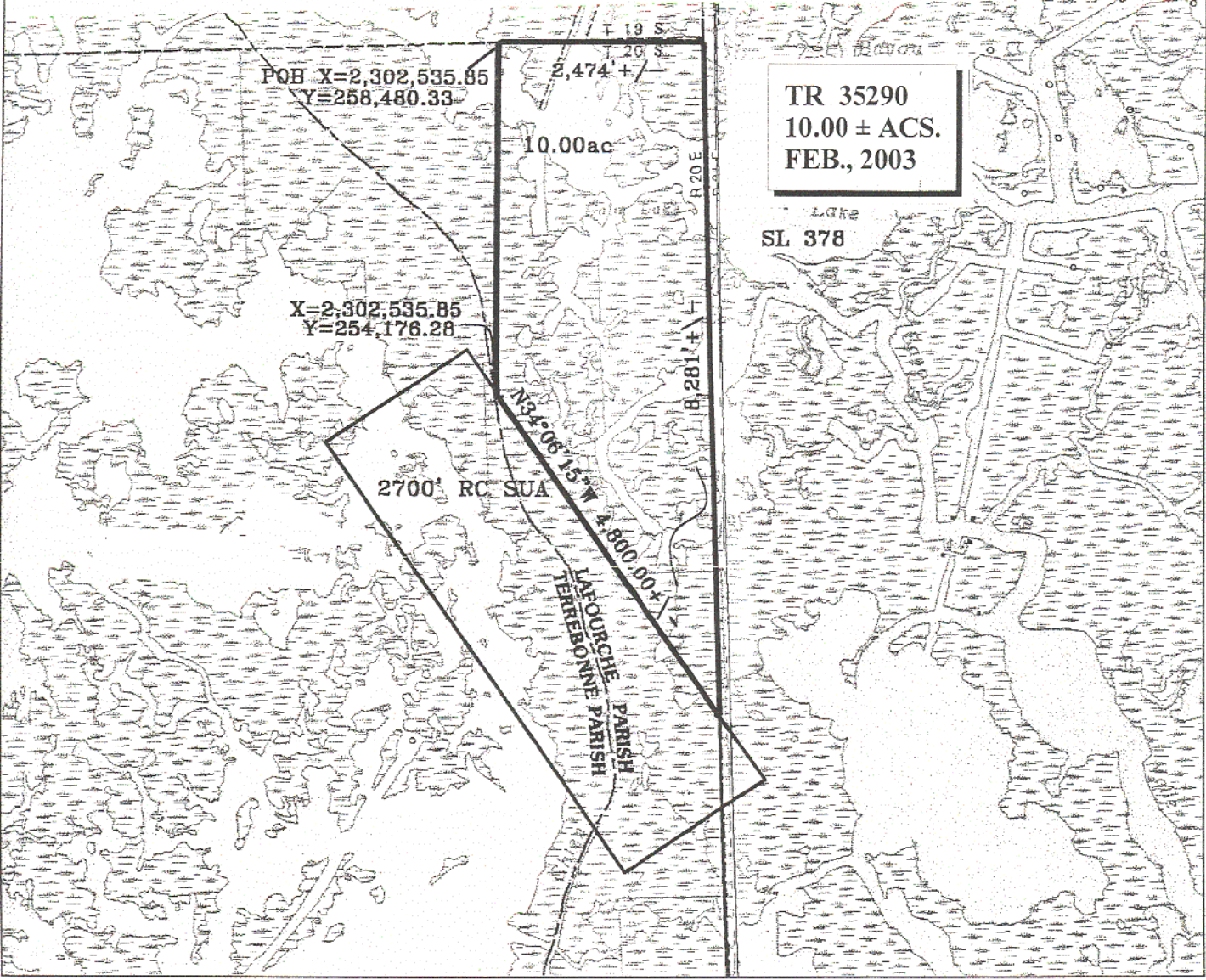
Applicant: Leslie L. Moore

Bidder	Cash Payment	Price / Acre	Rental	Oil	Gas	Other

T20S/R20E
Lafourche Parish, Louisiana



Scale: 1" = 2,000'



POB X=2,302,535.85
Y=258,480.33

2,474' +/-

10.00ac

X=2,302,535.85
Y=254,176.28

2700' RC SUA

N34°06'15\"/>

LAFOURCHE
PARISH

8,281' +/-

TR 35290
10.00 ± ACS.
FEB., 2003

Lake
SL 378

TRACT 35291 - Jefferson Parish, Louisiana

All of the lands now or formerly constituting the beds and bottoms of all water bodies of every nature and description, and all islands and other lands formed by accretion, where allowed by law, or by reliction, and excepting tax adjudicated lands, belonging to the State of Louisiana and not presently under mineral lease on February 12, 2003, situated in Jefferson Parish, Louisiana, and more particularly described as follows: Beginning at the Southwest corner of State Lease No. 17617 having Coordinates of X = 2,428,230.30 and Y = 251,566.77; thence East 2,396.15 feet on the South line of said State Lease No. 17617 to a corner, also being a point on the Western boundary of State Lease No. 17432 having Coordinates of X = 2,430,626.45 and Y = 251,566.77; thence South 50 degrees 02 minutes 01 seconds West 3,126.42 feet on the Western boundary of said State Lease No. 17432 to its most Southerly Northwest corner having Coordinates of X = 2,428,230.30 and Y = 249,558.55; thence North 2,008.22 feet to a point of beginning, containing approximately **26 acres**, all as more particularly outlined on a plat on file in the Office of Mineral Resources, Department of Natural Resources, as provided by the applicant. All bearings, distances and coordinates are based on Louisiana Coordinate System of 1927, (North or South Zone), where applicable.

NOTE: The above description of the Tract nominated for lease has been provided and corrected, where required, exclusively by the nomination party. Any mineral lease selected from this Tract and awarded by the Louisiana State Mineral Board shall be without warranty of any kind, either express, implied, or statutory, including, but not limited to, the implied warranties of merchantability and fitness for a particular purpose. Should the mineral lease awarded by the Louisiana State Mineral Board be subsequently modified, cancelled or abrogated due to the existence of conflicting leases, operating agreements, private claims or other future obligations or conditions which may affect all or any portion of the leased Tract, it shall not relieve the Lessee of the obligation to pay any bonus due thereon to the Louisiana State Mineral Board, nor shall the Louisiana State Mineral Board be obligated to refund any consideration paid by the Lessor prior to such modification, cancellation, or abrogation, including, but not limited to, bonuses, rentals and royalties.

NOTE: The State of Louisiana does hereby reserve, and this lease shall be subject to, the imprescriptible right of surface use in the nature of a servitude in favor of the Department of Natural Resources, including its Offices and Commissions, for the sole purpose of implementing, constructing, servicing and maintaining approved coastal zone management and/or restoration projects. Utilization of any and all rights derived under this lease by the mineral lessee, its agents, successors or assigns, shall not interfere with nor hinder the reasonable surface use by the Department of Natural Resources, its Offices or Commissions, as herein above reserved.

Applicant: Doyle Land Services, Inc.

Bidder	Cash Payment	Price / Acre	Rental	Oil	Gas	Other

R 24 E

70

Bassa Bassa

Lights

BASSA BASSA BAY

WATERWAY

Pelican Point

SL 17617

P. O. B.
X=2,428,230.30
Y= 251,566.77

TR 35291
26 ± ACS.
FEB., 2003

Band

BARATARIA BAY

SL 17432

SL 356,
As Amended

WEST CHAMPAGNE BAY

Bassa

EAST CHAMPAGNE BAY

SL 2084

BAY

GAS AND OIL FIELD Platform

Mile 5 ISLAND

NAD 27 LAMBERT L.A. SOUTH ZONE

Jefferson Parish, Louisiana

2000' 0' 2000'

TRACT 35292 - Plaquemines Parish, Louisiana

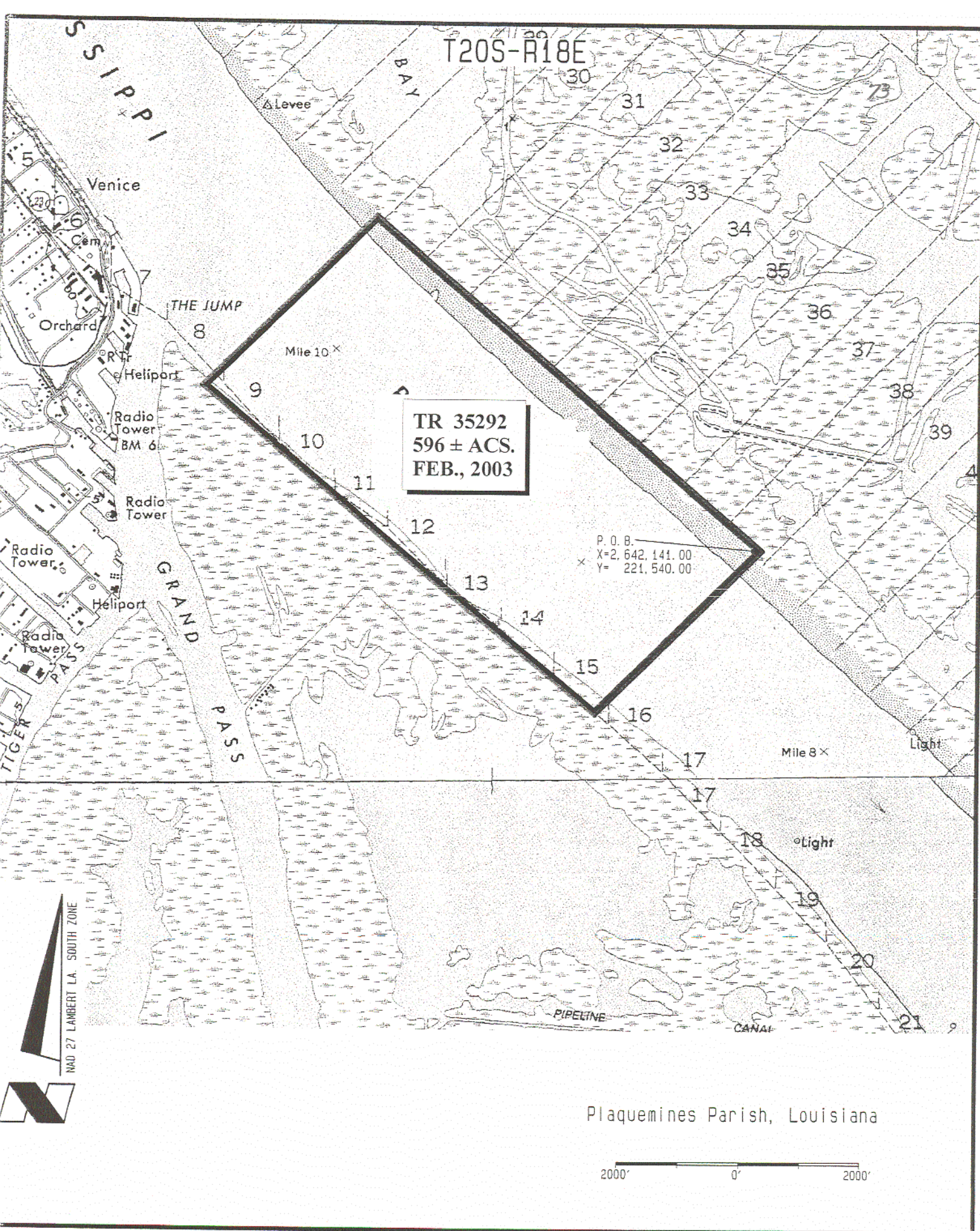
All of the lands now or formerly constituting the beds and bottoms of all water bodies of every nature and description, and all islands and other lands formed by accretion, where allowed by law, or by reliction, and excepting tax adjudicated lands, belonging to the State of Louisiana and not presently under mineral lease on February 12, 2003, situated in Plaquemines Parish, Louisiana, and more particularly described as follows: Beginning at a point having Coordinates of X = 2,642,141.00 and Y = 221,540.00; thence South 44 degrees 50 minutes 23 seconds West 3,790.81 feet to a point having Coordinates of X = 2,639,468.00 and Y = 218,852.00; thence North 49 degrees 50 minutes 29 seconds West 8,311.29 feet to a point having Coordinates of X = 2,633,116.00 and Y = 224,212.00; thence North 44 degrees 50 minutes 34 seconds East 3,892.82 feet to a point having Coordinates of X = 2,635,861.07 and Y = 226,972.18; thence South 49 degrees 08 minutes 24 seconds East 8,303.38 feet to the point of beginning, containing approximately **596 acres**, all as more particularly outlined on a plat on file in the Office of Mineral Resources, Department of Natural Resources, as provided by the applicant. All bearings, distances and coordinates are based on Louisiana Coordinate System of 1927, (North or South Zone), where applicable.

NOTE: The above description of the Tract nominated for lease has been provided and corrected, where required, exclusively by the nomination party. Any mineral lease selected from this Tract and awarded by the Louisiana State Mineral Board shall be without warranty of any kind, either express, implied, or statutory, including, but not limited to, the implied warranties of merchantability and fitness for a particular purpose. Should the mineral lease awarded by the Louisiana State Mineral Board be subsequently modified, cancelled or abrogated due to the existence of conflicting leases, operating agreements, private claims or other future obligations or conditions which may affect all or any portion of the leased Tract, it shall not relieve the Lessee of the obligation to pay any bonus due thereon to the Louisiana State Mineral Board, nor shall the Louisiana State Mineral Board be obligated to refund any consideration paid by the Lessor prior to such modification, cancellation, or abrogation, including, but not limited to, bonuses, rentals and royalties.

NOTE: The State of Louisiana does hereby reserve, and this lease shall be subject to, the imprescriptible right of surface use in the nature of a servitude in favor of the Department of Natural Resources, including its Offices and Commissions, for the sole purpose of implementing, constructing, servicing and maintaining approved coastal zone management and/or restoration projects. Utilization of any and all rights derived under this lease by the mineral lessee, its agents, successors or assigns, shall not interfere with nor hinder the reasonable surface use by the Department of Natural Resources, its Offices or Commissions, as herein above reserved.

Applicant: Genesis Resources Corporation

Bidder	Cash Payment	Price / Acre	Rental	Oil	Gas	Other



T20S-R18E

TR 35292
596 ± ACS.
FEB., 2003

P. O. B.
X=2,642,141.00
Y=221,540.00

Plaquemines Parish, Louisiana

2000' 0' 2000'

NAD 27 LAMBERT LA. SOUTH ZONE

TRACT 35293 - Plaquemines Parish, Louisiana

All of the lands now or formerly constituting the beds and bottoms of all water bodies of every nature and description, and all islands and other lands formed by accretion, where allowed by law, or by reliction, and excepting tax adjudicated lands, belonging to the State of Louisiana and not presently under mineral lease on February 12, 2003, situated in Plaquemines Parish, Louisiana, and more particularly described as follows: Beginning at a point having Coordinates of X = 2,642,141.00 and Y = 221,540.00; thence South 47 degrees 43 minutes 37 seconds East 7,520.82 feet to a point having Coordinates of X = 2,647,706.00 and Y = 216,481.00; thence South 44 degrees 50 minutes 46 seconds West 3,950.62 feet to a point having Coordinates of X = 2,644,920.00 and Y = 213,680.00; thence North 46 degrees 30 minutes 35 seconds West 7,514.91 feet to a point having Coordinates of X = 2,639,468.00 and Y = 218,852.00; thence North 44 degrees 50 minutes 23 seconds East 3,790.81 feet to the point of beginning, containing approximately **499 acres**, all as more particularly outlined on a plat on file in the Office of Mineral Resources, Department of Natural Resources, as provided by the applicant. All bearings, distances and coordinates are based on Louisiana Coordinate System of 1927, (North or South Zone), where applicable.

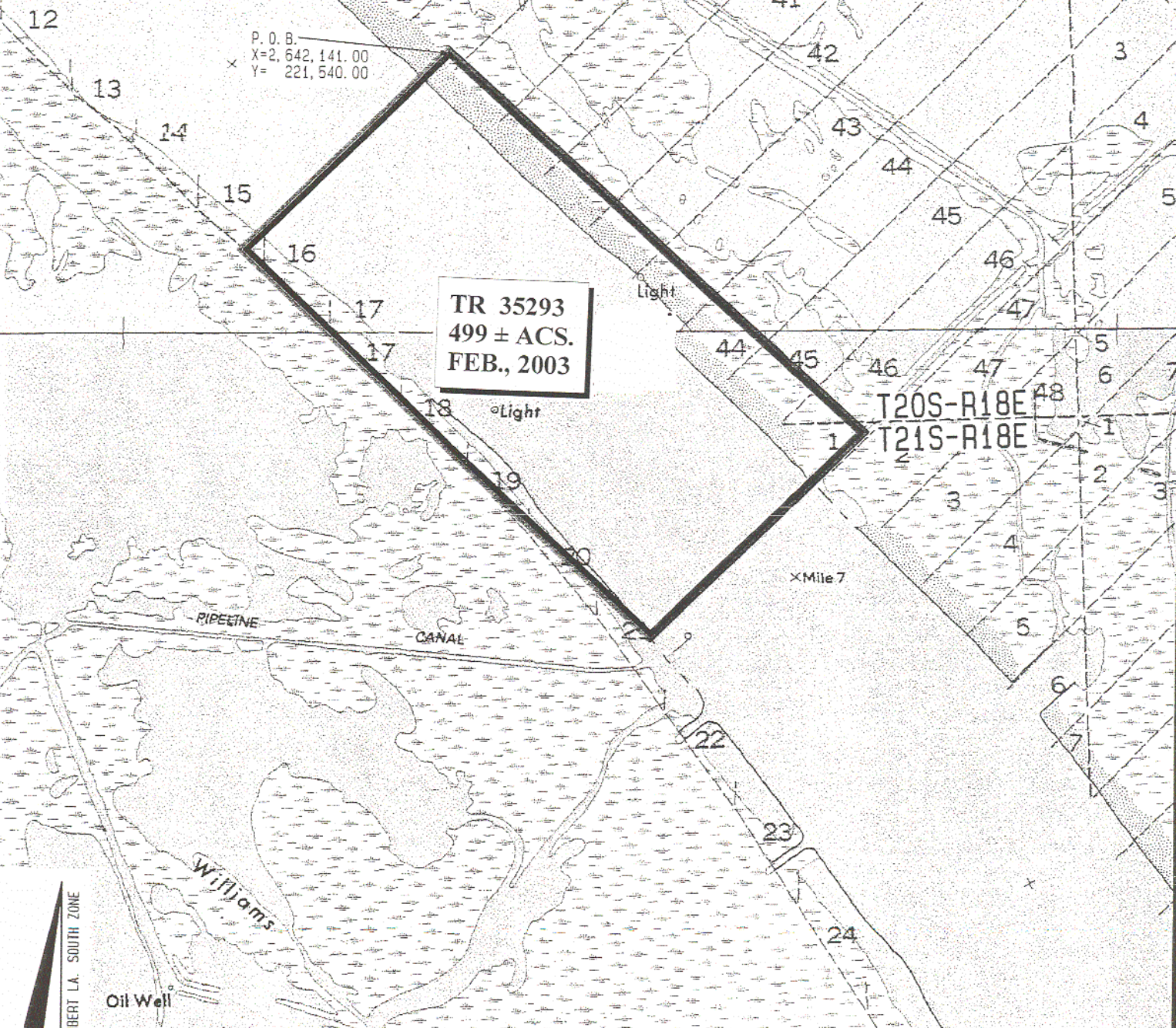
NOTE: The above description of the Tract nominated for lease has been provided and corrected, where required, exclusively by the nomination party. Any mineral lease selected from this Tract and awarded by the Louisiana State Mineral Board shall be without warranty of any kind, either express, implied, or statutory, including, but not limited to, the implied warranties of merchantability and fitness for a particular purpose. Should the mineral lease awarded by the Louisiana State Mineral Board be subsequently modified, cancelled or abrogated due to the existence of conflicting leases, operating agreements, private claims or other future obligations or conditions which may affect all or any portion of the leased Tract, it shall not relieve the Lessee of the obligation to pay any bonus due thereon to the Louisiana State Mineral Board, nor shall the Louisiana State Mineral Board be obligated to refund any consideration paid by the Lessor prior to such modification, cancellation, or abrogation, including, but not limited to, bonuses, rentals and royalties.

NOTE: The State of Louisiana does hereby reserve, and this lease shall be subject to, the imprescriptible right of surface use in the nature of a servitude in favor of the Department of Natural Resources, including its Offices and Commissions, for the sole purpose of implementing, constructing, servicing and maintaining approved coastal zone management and/or restoration projects. Utilization of any and all rights derived under this lease by the mineral lessee, its agents, successors or assigns, shall not interfere with nor hinder the reasonable surface use by the Department of Natural Resources, its Offices or Commissions, as herein above reserved.

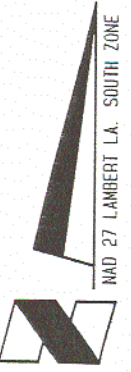
Applicant: Genesis Resources Corporation

Bidder	Cash Payment	Price / Acre	Rental	Oil	Gas	Other

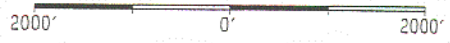
RIVER



TR 35293
499 ± ACS.
FEB., 2003



Plaquemines Parish, Louisiana



TRACT 35294 - Plaquemines Parish, Louisiana

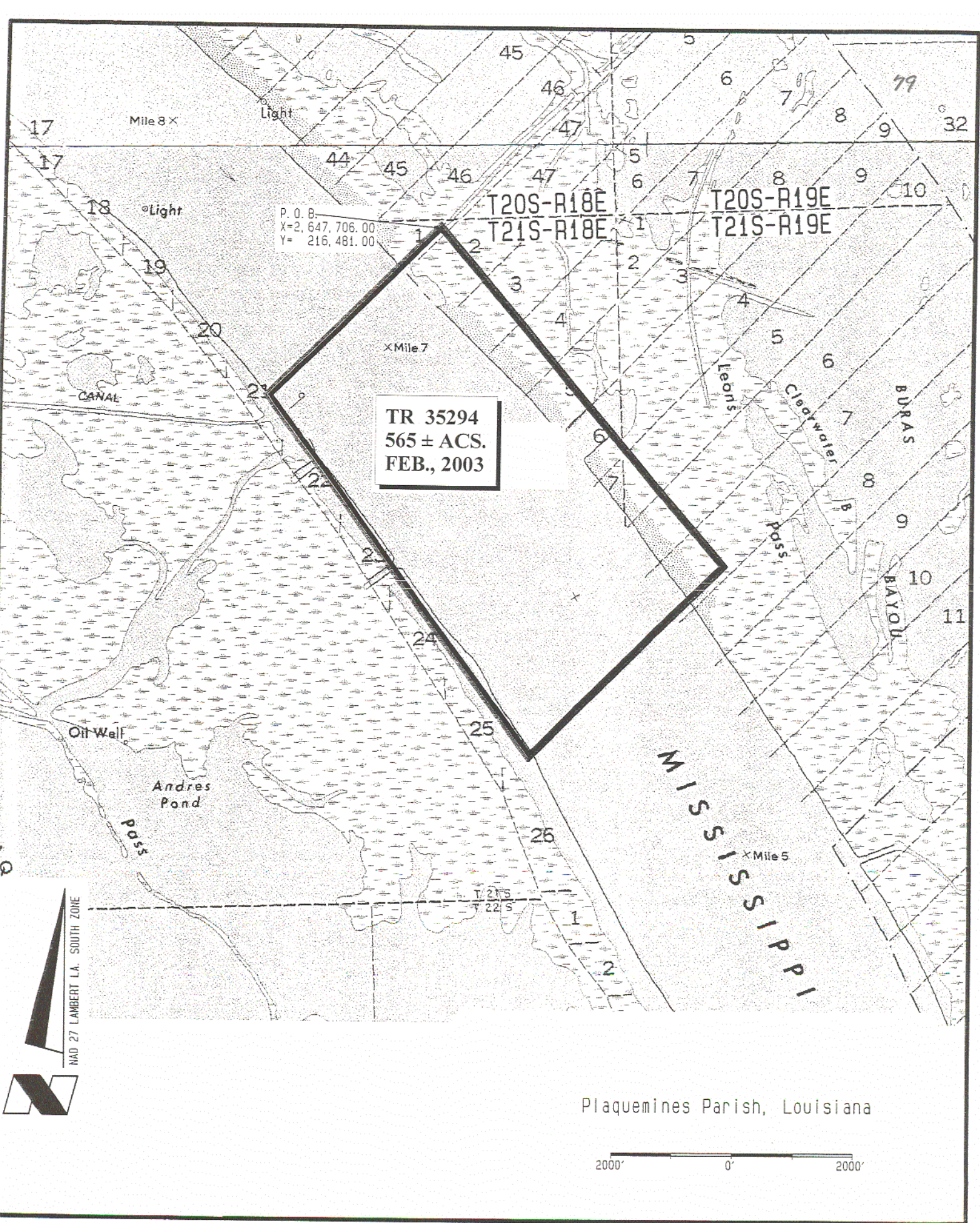
All of the lands now or formerly constituting the beds and bottoms of all water bodies of every nature and description, and all islands and other lands formed by accretion, where allowed by law, or by reliction, and excepting tax adjudicated lands, belonging to the State of Louisiana and not presently under mineral lease on February 12, 2003, situated in Plaquemines Parish, Louisiana, and more particularly described as follows: Beginning at a point having Coordinates of X = 2,647,706.00 and Y = 216,481.00; thence South 40 degrees 10 minutes 50 seconds East 7,338.85 feet to a point having Coordinates of X = 2,652,441.00 and Y = 210,874.00; thence South 44 degrees 50 minutes 51 seconds West 4,519.14 feet to a point having Coordinates of X = 2,649,254.00 and Y = 207,670.00; thence North 35 degrees 47 minutes 48 seconds West 7,409.70 feet to a point having Coordinates of X = 2,644,920.00 and Y = 213,680.00; thence North 44 degrees 50 minutes 46 seconds East 3,950.62 feet to the point of beginning, containing approximately **565 acres**, all as more particularly outlined on a plat on file in the Office of Mineral Resources, Department of Natural Resources, as provided by the applicant. All bearings, distances and coordinates are based on Louisiana Coordinate System of 1927, (North or South Zone), where applicable.

NOTE: The above description of the Tract nominated for lease has been provided and corrected, where required, exclusively by the nomination party. Any mineral lease selected from this Tract and awarded by the Louisiana State Mineral Board shall be without warranty of any kind, either express, implied, or statutory, including, but not limited to, the implied warranties of merchantability and fitness for a particular purpose. Should the mineral lease awarded by the Louisiana State Mineral Board be subsequently modified, cancelled or abrogated due to the existence of conflicting leases, operating agreements, private claims or other future obligations or conditions which may affect all or any portion of the leased Tract, it shall not relieve the Lessee of the obligation to pay any bonus due thereon to the Louisiana State Mineral Board, nor shall the Louisiana State Mineral Board be obligated to refund any consideration paid by the Lessor prior to such modification, cancellation, or abrogation, including, but not limited to, bonuses, rentals and royalties.

NOTE: The State of Louisiana does hereby reserve, and this lease shall be subject to, the imprescriptible right of surface use in the nature of a servitude in favor of the Department of Natural Resources, including its Offices and Commissions, for the sole purpose of implementing, constructing, servicing and maintaining approved coastal zone management and/or restoration projects. Utilization of any and all rights derived under this lease by the mineral lessee, its agents, successors or assigns, shall not interfere with nor hinder the reasonable surface use by the Department of Natural Resources, its Offices or Commissions, as herein above reserved.

Applicant: Genesis Resources Corporation

Bidder	Cash Payment	Price / Acre	Rental	Oil	Gas	Other



P. O. B.
X=2,647,706.00
Y=216,481.00

TR 35294
565 ± ACS.
FEB., 2003

T20S-R18E
T21S-R18E

T20S-R19E
T21S-R19E

Oil Well

Andres Pond

MISSISSIPPI

NAD 27 LAMBERT L.A. SOUTH ZONE

Plaquemines Parish, Louisiana

2000' 0' 2000'

TRACT 35295 - Plaquemines Parish, Louisiana

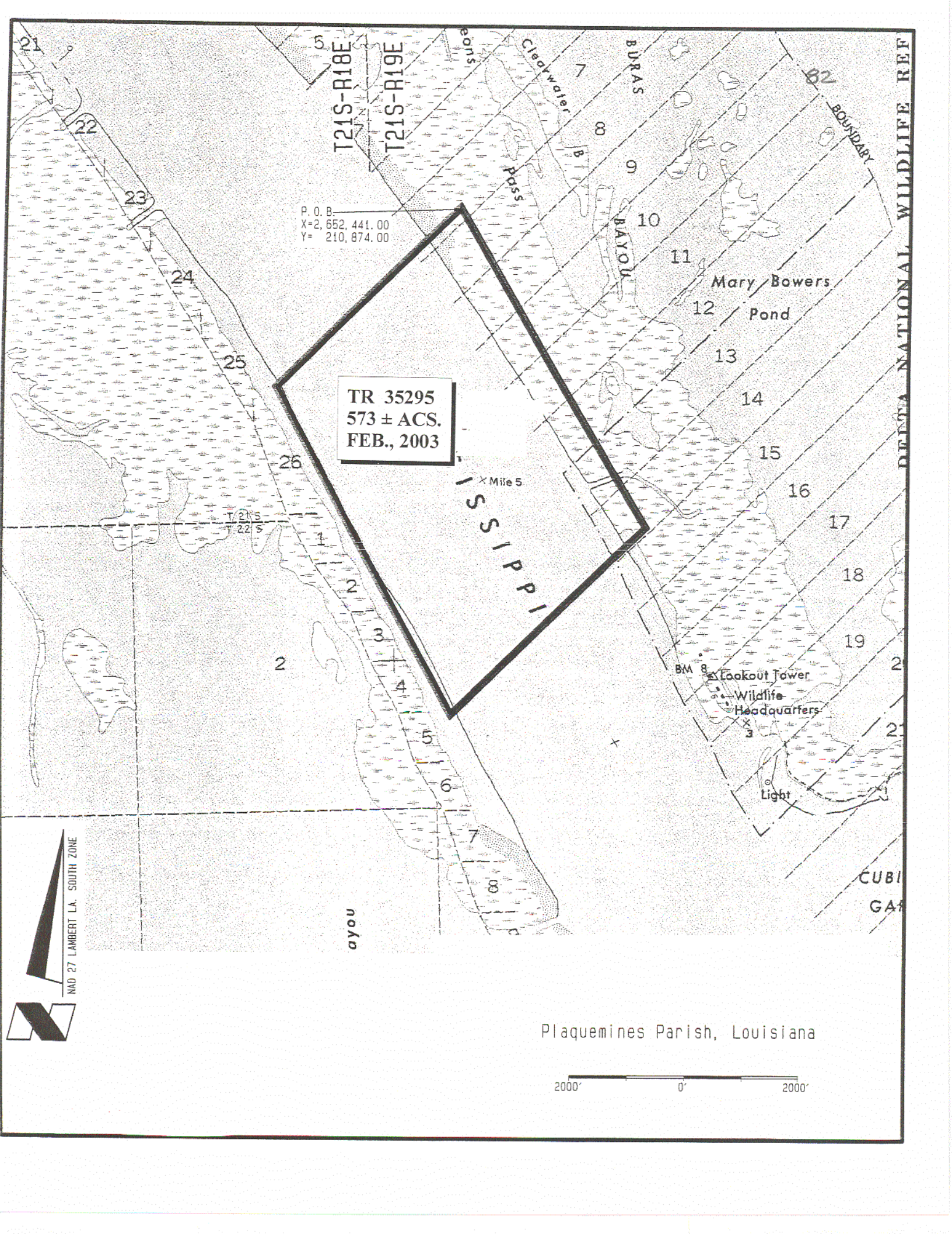
All of the lands now or formerly constituting the beds and bottoms of all water bodies of every nature and description, and all islands and other lands formed by accretion, where allowed by law, or by reliction, and excepting tax adjudicated lands, belonging to the State of Louisiana and not presently under mineral lease on February 12, 2003, situated in Plaquemines Parish, Louisiana, and more particularly described as follows: Beginning at a point having Coordinates of X = 2,652,441.00 and Y = 210,874.00; thence South 30 degrees 03 minutes 05 seconds East 6,559.79 feet to a point having Coordinates of X = 2,655,726.00 and Y = 205,196.00; thence South 44 degrees 50 minutes 49 seconds West 4,761.67 feet to a point having Coordinates of X = 2,652,368.00 and Y = 201,820.00; thence North 28 degrees 01 minutes 36 seconds West 6,627.18 feet to a point having Coordinates of X = 2,649,254.00 and Y = 207,670.00; thence North 44 degrees 50 minutes 51 seconds East 4,519.14 feet to the point of beginning, containing approximately **573 acres**, all as more particularly outlined on a plat on file in the Office of Mineral Resources, Department of Natural Resources, as provided by the applicant. All bearings, distances and coordinates are based on Louisiana Coordinate System of 1927, (North or South Zone), where applicable.

NOTE: The above description of the Tract nominated for lease has been provided and corrected, where required, exclusively by the nomination party. Any mineral lease selected from this Tract and awarded by the Louisiana State Mineral Board shall be without warranty of any kind, either express, implied, or statutory, including, but not limited to, the implied warranties of merchantability and fitness for a particular purpose. Should the mineral lease awarded by the Louisiana State Mineral Board be subsequently modified, cancelled or abrogated due to the existence of conflicting leases, operating agreements, private claims or other future obligations or conditions which may affect all or any portion of the leased Tract, it shall not relieve the Lessee of the obligation to pay any bonus due thereon to the Louisiana State Mineral Board, nor shall the Louisiana State Mineral Board be obligated to refund any consideration paid by the Lessor prior to such modification, cancellation, or abrogation, including, but not limited to, bonuses, rentals and royalties.

NOTE: The State of Louisiana does hereby reserve, and this lease shall be subject to, the imprescriptible right of surface use in the nature of a servitude in favor of the Department of Natural Resources, including its Offices and Commissions, for the sole purpose of implementing, constructing, servicing and maintaining approved coastal zone management and/or restoration projects. Utilization of any and all rights derived under this lease by the mineral lessee, its agents, successors or assigns, shall not interfere with nor hinder the reasonable surface use by the Department of Natural Resources, its Offices or Commissions, as herein above reserved.

Applicant: Genesis Resources Corporation

Bidder	Cash Payment	Price / Acre	Rental	Oil	Gas	Other



P. O. B.
X=2,652,441.00
Y= 210,874.00

TR 35295
573 ± ACS.
FEB., 2003

MISSISSIPPI

x Mile 5

ayou

BURAS

BAYOU

Mary Bowers
Pond

Lookout Tower
Wildlife
Headquarters

Light

BOUNDARY

DELTA NATIONAL WILDLIFE REF

CUBI
GAR

Plaquemines Parish, Louisiana

2000' 0' 2000'

NAD 27 LAMBERT L.A. SOUTH ZONE

