

**OFFSHORE**

**TRACTS**

**TRACT 34123 - PORTION OF BLOCK 4, EAST CAMERON AREA, REVISED, Cameron Parish, Louisiana**

That portion of Block 4, East Cameron Area, Revised, Cameron Parish, Louisiana, belonging to the State of Louisiana and not under mineral lease on February 13, 2002, described as follows: Beginning at the Northeast corner of Block 4, East Cameron Area, Revised, said corner also being a point on the Coastline derived from the June 16, 1975 Decree in the United States vs. Louisiana No. 9 Original, having Coordinates of X = 1,509,516.10 and Y = 368,912.90; thence West 16,482.77 feet to a point on the West line of said Block 4 having Coordinates of X = 1,493,033.33 and Y = 368,912.90; thence North 8,698.30 feet along the West line of said Block 4 to its Northwest corner, said corner also being a point on said Coastline having Coordinates of X = 1,493,033.33 and Y = 377,611.20; thence along said Coastline the following courses: Southeasterly to a point having Coordinates of X = 1,496,700 and Y = 375,770, Southeasterly to a point having Coordinates of X = 1,502,470 and Y = 372,625, and Southeasterly to the point of beginning, containing **1,654.92 acres**, as shown outlined on a plat on file in the Office of Mineral Resources, Department of Natural Resources, as provided by the applicant. All bearings, distances and coordinates are based on Louisiana Coordinate System of 1927 (South Zone).

NOTE: The above description of the tract nominated for lease has been provided exclusively by the party nominating the tract for lease. The Louisiana State Mineral Board makes no representation as to the accuracy of the description of the nominated tract or its suitability for lease. The Louisiana State Mineral Board has made no inspection of the nominated tract for the existence of conflicting leases, operating agreements, private claims or other existing or future obligations or conditions which may affect all or any portion of the nominated tract or its suitability for lease.

Maps depicting the nominated tract, containing the bearings, distances and coordinates of the nominated tract based on the Louisiana Coordinate System of 1927, North or South Zone, as applicable, are available for public inspection and review at the offices of the Louisiana State Mineral Board from 10:00 a.m. to 3:00 p.m. Monday - Friday.

In the event of conflict between the description of the nominated tract set forth above and the description of the nominated property as contained on the maps maintained at the offices of the Louisiana State Mineral Board, the Louisiana State Mineral Board maps shall prevail and shall provide the final property description of the lease to be awarded of the nominated tract.

Any mineral lease of the nominated tract by the Louisiana State Mineral Board shall be without warranty of any kind, either express, implied, or statutory, including, but not limited to, the implied warranties or merchantability and fitness for a particular purpose. Should the mineral lease of the nominated tract awarded by the Louisiana State Mineral Board be subsequently modified, cancelled or abrogated due to the existence of conflicting leases, operating agreements, private claims or other existing of future obligations or conditions which may affect all or any portion of the leased tract, it shall not relieve the Lessee of the obligation to pay any bonus due thereon to the Louisiana State Mineral Board, nor shall the

Louisiana State Mineral Board be obligated to refund any consideration paid by the Lessee prior to such modification, cancellation, or abrogation, including, but not limited to, bonuses, rents and royalties.

NOTE: The State of Louisiana does hereby reserve, and this lease shall be subject to, the imprescriptible right of surface use in the nature of a servitude in favor of the Department of Natural Resources, including its Offices and Commissions, for the sole purpose of implementing, constructing, servicing and maintaining approved coastal zone management and/or restoration projects. Utilization of any and all rights derived under this lease by the mineral lessee, its agents, successors or assigns, shall not interfere with nor hinder the reasonable surface use by the Department of Natural Resources, its Offices or Commissions, as hereinabove reserved.

Applicant: Gulf Coast Oil Properties, Inc.

Bidder	Cash Payment	Price / Acre	Rental	Oil	Gas	Other

EAST CAMERON AREA, REVISED

10

TR 34123  
1,654.92 ± ACS.  
FEB., 2002

P.O.B.  
X = 1,509,516.10  
Y = 368,912.90

NAD 1927 (South Zone)

3

Blk. 4

MEXICO

5

S.L. 16980

Blk. 9

GULF

8

10

CAMERON PARISH, LOUISIANA

SCALE : 1" = 3000'

**TRACT 34124 - PORTION OF BLOCK 4, EAST CAMERON AREA, REVISED, Cameron Parish, Louisiana**

That portion of Block 4, East Cameron Area, Revised, Cameron Parish, Louisiana, belonging to the State of Louisiana and not under mineral lease on February 13, 2002, described as follows: Beginning at the Northeast corner of Block 4, East Cameron Area, Revised, said corner also being a point on the Coastline derived from the June 16, 1975 Decree in the United States vs. Louisiana No. 9 Original, having Coordinates of X = 1,509,516.10 and Y = 368,912.90; thence South 5,712.90 feet along the East line of said Block 4 to a point having Coordinates of X = 1,509,516.10 and Y = 363,200.00; thence West 10,516.10 feet to the Northeast corner of State Lease No. 16980 having Coordinates of X = 1,499,000.00 and Y = 363,200.00; thence West 3,633.00 feet along the North line of said State Lease No. 16980 to its Northwest corner having Coordinates of X = 1,495,367.00 and Y = 363,200.00; thence South 3,200.00 feet along the West line of said State Lease No. 16980 to its Southwest corner, said corner also being a point on the South line of said Block 4, having Coordinates of X = 1,495,367.00 and Y = 360,000.00; thence West 2,333.67 feet along the South line of said Block 4 to its Southwest corner having Coordinates of X = 1,493,033.33 and Y = 360,000.00; thence North 8,912.90 feet along the West line of said Block 4 to a point having Coordinates of X = 1,493,033.33 and Y = 368,912.90; thence East 16,482.77 feet to the point of beginning, containing **2,333.15 acres**, as shown outlined on a plat on file in the Office of Mineral Resources, Department of Natural Resources, as provided by the applicant. All bearings, distances and coordinates are based on Louisiana Coordinate System of 1927 (South Zone).

NOTE: The above description of the tract nominated for lease has been provided exclusively by the party nominating the tract for lease. The Louisiana State Mineral Board makes no representation as to the accuracy of the description of the nominated tract or its suitability for lease. The Louisiana State Mineral Board has made no inspection of the nominated tract for the existence of conflicting leases, operating agreements, private claims or other existing or future obligations or conditions which may affect all or any portion of the nominated tract or its suitability for lease.

Maps depicting the nominated tract, containing the bearings, distances and coordinates of the nominated tract based on the Louisiana Coordinate System of 1927, North or South Zone, as applicable, are available for public inspection and review at the offices of the Louisiana State Mineral Board from 10:00 a.m. to 3:00 p.m. Monday - Friday.

In the event of conflict between the description of the nominated tract set forth above and the description of the nominated property as contained on the maps maintained at the offices of the Louisiana State Mineral Board, the Louisiana State Mineral Board maps shall prevail and shall provide the final property description of the lease to be awarded of the nominated tract.

Any mineral lease of the nominated tract by the Louisiana State Mineral Board shall be without warranty of any kind, either express, implied, or statutory, including, but not limited to, the implied warranties or merchantability and fitness for a particular purpose. Should the mineral lease of the nominated tract awarded by the Louisiana State Mineral Board be subsequently modified, cancelled or

abrogated due to the existence of conflicting leases, operating agreements, private claims or other existing of future obligations or conditions which may affect all or any portion of the leased tract, it shall not relieve the Lessee of the obligation to pay any bonus due thereon to the Louisiana State Mineral Board, nor shall the Louisiana State Mineral Board be obligated to refund any consideration paid by the Lessee prior to such modification, cancellation, or abrogation, including, but not limited to, bonuses, rents and royalties.

NOTE: The State of Louisiana does hereby reserve, and this lease shall be subject to, the imprescriptible right of surface use in the nature of a servitude in favor of the Department of Natural Resources, including its Offices and Commissions, for the sole purpose of implementing, constructing, servicing and maintaining approved coastal zone management and/or restoration projects. Utilization of any and all rights derived under this lease by the mineral lessee, its agents, successors or assigns, shall not interfere with nor hinder the reasonable surface use by the Department of Natural Resources, its Offices or Commissions, as hereinabove reserved.

Applicant: Gulf Coast Oil Properties, Inc.

Bidder	Cash Payment	Price / Acre	Rental	Oil	Gas	Other

EAST CAMERON AREA, REVISED

13

**P.O.B.**  
X = 1,509,516.10  
Y = 368,912.90

NAD 1927 (South Zone)

**Blk. 4**

**TR 34124**  
**2,333.15 ± ACS.**  
**FEB., 2002**

S.L. 16980

MEXICO

OF

GULF

**Blk. 9**

3

5

10

8

CAMERON PARISH, LOUISIANA

SCALE : 1" = 3000'

**TRACT 34125 - PORTION OF BLOCK 4, EAST CAMERON AREA, REVISED, Cameron Parish, Louisiana**

That portion of Block 4, East Cameron Area, Revised, Cameron Parish, Louisiana, belonging to the State of Louisiana and not under mineral lease on February 13, 2002, described as follows: Beginning at the Southeast corner of Block 4, East Cameron Area, Revised, having Coordinates of X = 1,509,516.10 and Y = 360,000.00; thence West 10,516.10 feet along the South line of said Block 4 to the Southeast corner of State Lease No. 16980 having Coordinates of X = 1,499,000.00 and Y = 360,000.00; thence North 3,200.00 feet along the East line of said State Lease No. 16980 to its Northeast corner having Coordinates of X = 1,499,000.00 and Y = 363,200.00; thence East 10,516.10 feet to a point on the East line of said Block 4 having Coordinates of X = 1,509,516.10 and Y = 363,200.00; thence South 3,200.00 feet along the East line of said Block 4 to the point of beginning, containing **772.53 acres**, as shown outlined on a plat on file in the Office of Mineral Resources, Department of Natural Resources, as provided by the applicant. All bearings, distances and coordinates are based on Louisiana Coordinate System of 1927 (South Zone).

NOTE: The above description of the tract nominated for lease has been provided exclusively by the party nominating the tract for lease. The Louisiana State Mineral Board makes no representation as to the accuracy of the description of the nominated tract or its suitability for lease. The Louisiana State Mineral Board has made no inspection of the nominated tract for the existence of conflicting leases, operating agreements, private claims or other existing or future obligations or conditions which may affect all or any portion of the nominated tract or its suitability for lease.

Maps depicting the nominated tract, containing the bearings, distances and coordinates of the nominated tract based on the Louisiana Coordinate System of 1927, North or South Zone, as applicable, are available for public inspection and review at the offices of the Louisiana State Mineral Board from 10:00 a.m. to 3:00 p.m. Monday - Friday.

In the event of conflict between the description of the nominated tract set forth above and the description of the nominated property as contained on the maps maintained at the offices of the Louisiana State Mineral Board, the Louisiana State Mineral Board maps shall prevail and shall provide the final property description of the lease to be awarded of the nominated tract.

Any mineral lease of the nominated tract by the Louisiana State Mineral Board shall be without warranty of any kind, either express, implied, or statutory, including, but not limited to, the implied warranties or merchantability and fitness for a particular purpose. Should the mineral lease of the nominated tract awarded by the Louisiana State Mineral Board be subsequently modified, cancelled or abrogated due to the existence of conflicting leases, operating agreements, private claims or other existing of future obligations or conditions which may affect all or any portion of the leased tract, it shall not relieve the Lessee of the obligation to pay any bonus due thereon to the Louisiana State Mineral Board, nor shall the Louisiana State Mineral Board be obligated to refund any consideration paid by the Lessee prior to such modification,



cancellation, or abrogation, including, but not limited to, bonuses, rents and royalties.

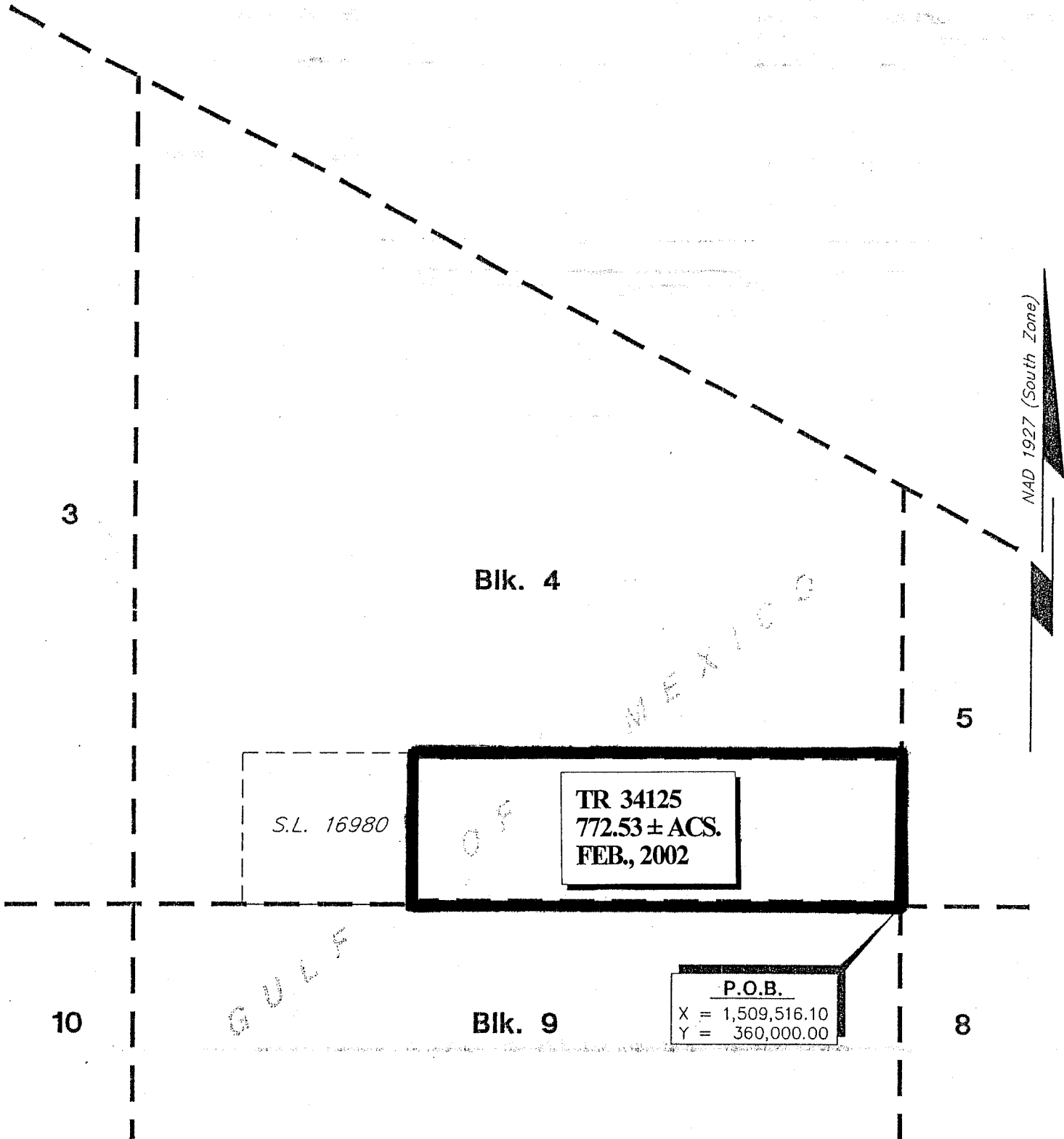
NOTE: The State of Louisiana does hereby reserve, and this lease shall be subject to, the imprescriptible right of surface use in the nature of a servitude in favor of the Department of Natural Resources, including its Offices and Commissions, for the sole purpose of implementing, constructing, servicing and maintaining approved coastal zone management and/or restoration projects. Utilization of any and all rights derived under this lease by the mineral lessee, its agents, successors or assigns, shall not interfere with nor hinder the reasonable surface use by the Department of Natural Resources, its Offices or Commissions, as hereinabove reserved.

Applicant: Gulf Coast Oil Properties, Inc.

Bidder	Cash Payment	Price / Acre	Rental	Oil	Gas	Other

# EAST CAMERON AREA, REVISED

16



CAMERON PARISH, LOUISIANA

SCALE : 1" = 3000'