

**INLAND**

**TRACTS**

**TRACT 34126 - Beauregard Parish, Louisiana**

All of the lands now or formerly constituting the beds and bottoms of all water bodies of every nature and description and all islands and other lands formed by accretion or reliction, except tax lands, owned by and not under mineral lease from the State of Louisiana on February 13, 2002, situated in Beauregard Parish, Louisiana, within the following described boundaries: Beginning at a point having Coordinates of X = 1,245,050.00 and Y = 703,000.00; thence East 2,800.00 feet to a point having Coordinates of X = 1,247,850.00 and Y = 703,000.00; thence South 11,000.00 feet to a point having Coordinates of X = 1,247,850.00 and Y = 692,000.00; thence West 2,800.00 feet to a point having Coordinates of X = 1,245,050.00 and Y = 692,000.00; thence North 11,000.00 feet to the point of beginning, containing approximately **31 acres**, as shown outlined on a plat on file in the Office of Mineral Resources, Department of Natural Resources, as provided by the applicant, **LESS AND EXCEPT** that portion thereof, if any, located West of the boundary line between the States of Texas and Louisiana as determined by the report of the Special Master in litigation in the Supreme Court of the United States styled Texas v. Louisiana et al No. 36 Original, or as otherwise approved by said court. All bearings, distances and coordinates are based on Louisiana Coordinate System of 1927 (South Zone).

NOTE: The above description of the tract nominated for lease has been provided exclusively by the party nominating the tract for lease. The Louisiana State Mineral Board makes no representation as to the accuracy of the description of the nominated tract or its suitability for lease. The Louisiana State Mineral Board has made no inspection of the nominated tract for the existence of conflicting leases, operating agreements, private claims or other existing or future obligations or conditions which may affect all or any portion of the nominated tract or its suitability for lease.

Maps depicting the nominated tract, containing the bearings, distances and coordinates of the nominated tract based on the Louisiana Coordinate System of 1927, North or South Zone, as applicable, are available for public inspection and review at the offices of the Louisiana State Mineral Board from 10:00 a.m. to 3:00 p.m. Monday - Friday.

In the event of conflict between the description of the nominated tract set forth above and the description of the nominated property as contained on the maps maintained at the offices of the Louisiana State Mineral Board, the Louisiana State Mineral Board maps shall prevail and shall provide the final property description of the lease to be awarded of the nominated tract.

Any mineral lease of the nominated tract by the Louisiana State Mineral Board shall be without warranty of any kind, either express, implied, or statutory, including, but not limited to, the implied warranties or merchantability and fitness for a particular purpose. Should the mineral lease of the nominated tract awarded by the Louisiana State Mineral Board be subsequently modified, cancelled or abrogated due to the existence of conflicting leases, operating agreements, private claims or other existing of future obligations or conditions which may affect all or any portion of the leased tract, it shall not relieve the Lessee of the obligation to pay any bonus due thereon to the Louisiana State Mineral Board,

nor shall the Louisiana State Mineral Board be obligated to refund any consideration paid by the Lessee prior to such modification, cancellation, or abrogation, including, but not limited to, bonuses, rents and royalties.

Applicant: South Coast Production Company, Ltd.

Bidder	Cash Payment	Price / Acre	Rental	Oil	Gas	Other

**P.O.B.**  
X = 1,245,050.00  
Y = 703,000.00

**TR 34126**  
**31 ± ACS.**  
**FEB, 2002**

BEAUREGARD PARISH, LOUISIANA

SCALE : 1" = 2000'

**TRACT 34127 - St. Charles Parish, Louisiana**

All of the lands now or formerly constituting the beds and bottoms of all water bodies of every nature and description and all islands and other lands formed by accretion or reliction, except tax lands, owned by and not under mineral lease from the State of Louisiana on February 13, 2002, situated in St. Charles Parish, Louisiana, within the following described boundaries: Beginning at a point having Coordinates of X = 2,334,900.00 and Y = 405,800.00; thence South 15,600.00 feet to a point having Coordinates of X = 2,334,900.00 and Y = 390,200.00; thence West 16,800.00 feet to a point having Coordinates of X = 2,318,100.00 and Y = 390,200.00; thence North 15,600.00 feet to a point having Coordinates of X = 2,318,100.00 and Y = 405,800.00; thence East 16,800.00 feet to the point of beginning, **LESS AND EXCEPT** any portion of the above described tract lying inside the boundaries of the Salvador Wildlife Management Area, containing approximately **1,728 acres**, as shown outlined on a plat on file in the Office of Mineral Resources, Department of Natural Resources, as provided by the applicant. All bearings, distances and coordinates are based on Louisiana Coordinate System of 1927 (South Zone).

NOTE: The above description of the tract nominated for lease has been provided exclusively by the party nominating the tract for lease. The Louisiana State Mineral Board makes no representation as to the accuracy of the description of the nominated tract or its suitability for lease. The Louisiana State Mineral Board has made no inspection of the nominated tract for the existence of conflicting leases, operating agreements, private claims or other existing or future obligations or conditions which may affect all or any portion of the nominated tract or its suitability for lease.

Maps depicting the nominated tract, containing the bearings, distances and coordinates of the nominated tract based on the Louisiana Coordinate System of 1927, North or South Zone, as applicable, are available for public inspection and review at the offices of the Louisiana State Mineral Board from 10:00 a.m. to 3:00 p.m. Monday - Friday.

In the event of conflict between the description of the nominated tract set forth above and the description of the nominated property as contained on the maps maintained at the offices of the Louisiana State Mineral Board, the Louisiana State Mineral Board maps shall prevail and shall provide the final property description of the lease to be awarded of the nominated tract.

Any mineral lease of the nominated tract by the Louisiana State Mineral Board shall be without warranty of any kind, either express, implied, or statutory, including, but not limited to, the implied warranties or merchantability and fitness for a particular purpose. Should the mineral lease of the nominated tract awarded by the Louisiana State Mineral Board be subsequently modified, cancelled or abrogated due to the existence of conflicting leases, operating agreements, private claims or other existing of future obligations or conditions which may affect all or any portion of the leased tract, it shall not relieve the Lessee of the obligation to pay any bonus due thereon to the Louisiana State Mineral Board, nor shall the Louisiana State Mineral Board be obligated to refund any consideration paid by the Lessee prior to such modification,

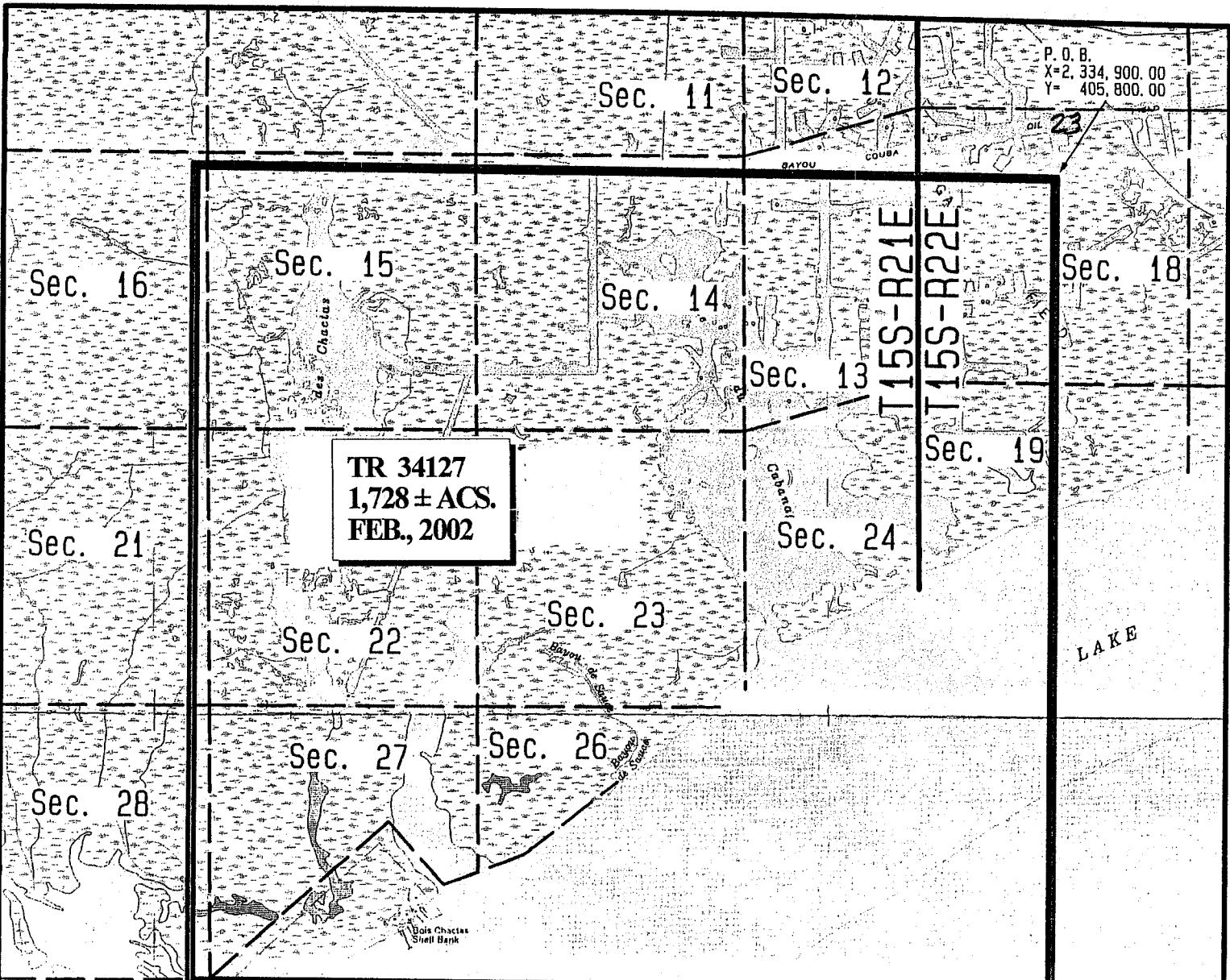
cancellation, or abrogation, including, but not limited to, bonuses, rents and royalties.

NOTE: The State of Louisiana does hereby reserve, and this lease shall be subject to, the imprescriptible right of surface use in the nature of a servitude in favor of the Department of Natural Resources, including its Offices and Commissions, for the sole purpose of implementing, constructing, servicing and maintaining approved coastal zone management and/or restoration projects. Utilization of any and all rights derived under this lease by the mineral lessee, its agents, successors or assigns, shall not interfere with nor hinder the reasonable surface use by the Department of Natural Resources, its Offices or Commissions, as hereinabove reserved.

Applicant: Taylex, Inc.

Bidder	Cash Payment	Price / Acre	Rental	Oil	Gas	Other

P. O. B.  
X=2,334,900.00  
Y=405,800.00



**TR 34127**  
**1,728 ± ACS.**  
**FEB., 2002**

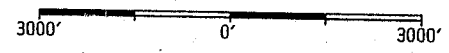
LAKE SALVADOR

NAD 27 LAMBERT LA. SOUTH ZONE

Topography obtained from USC&GS Quadrangle  
"CATAOUATCHE BAY, LA.", 1980 Edition, Photorevised  
1979, & "LAKE CATAOUATCHE WEST, LA.", 1967 Edition,  
Photorevised 1972 & 1979, Photoinspected 1983.



St. Charles Parish, Louisiana



**TRACT 34128 - St. Charles Parish, Louisiana**

All of the lands now or formerly constituting the beds and bottoms of all water bodies of every nature and description and all islands and other lands formed by accretion or reliction, except tax lands, owned by and not under mineral lease from the State of Louisiana on February 13, 2002, situated in St. Charles Parish, Louisiana, within the following described boundaries: Beginning at a point having Coordinates of X = 2,334,900.00 and Y = 405,800.00; thence East 8,000.00 feet to a point having Coordinates of X = 2,342,900.00 and Y = 405,800.00; thence South 15,600.00 feet to a point having Coordinates of X = 2,342,900.00 and Y = 390,200.00; thence West 8,000.00 feet to a point having Coordinates of X = 2,334,900.00 and Y = 390,200.00; thence North 15,600.00 feet to the point of beginning, **LESS AND EXCEPT** any portion of the above described tract lying inside the boundaries of the Salvador Wildlife Management Area, containing approximately **2,005 acres**, as shown outlined on a plat on file in the Office of Mineral Resources, Department of Natural Resources, as provided by the applicant. All bearings, distances and coordinates are based on Louisiana Coordinate System of 1927 (South Zone).

NOTE: The above description of the tract nominated for lease has been provided exclusively by the party nominating the tract for lease. The Louisiana State Mineral Board makes no representation as to the accuracy of the description of the nominated tract or its suitability for lease. The Louisiana State Mineral Board has made no inspection of the nominated tract for the existence of conflicting leases, operating agreements, private claims or other existing or future obligations or conditions which may affect all or any portion of the nominated tract or its suitability for lease.

Maps depicting the nominated tract, containing the bearings, distances and coordinates of the nominated tract based on the Louisiana Coordinate System of 1927, North or South Zone, as applicable, are available for public inspection and review at the offices of the Louisiana State Mineral Board from 10:00 a.m. to 3:00 p.m. Monday - Friday.

In the event of conflict between the description of the nominated tract set forth above and the description of the nominated property as contained on the maps maintained at the offices of the Louisiana State Mineral Board, the Louisiana State Mineral Board maps shall prevail and shall provide the final property description of the lease to be awarded of the nominated tract.

Any mineral lease of the nominated tract by the Louisiana State Mineral Board shall be without warranty of any kind, either express, implied, or statutory, including, but not limited to, the implied warranties or merchantability and fitness for a particular purpose. Should the mineral lease of the nominated tract awarded by the Louisiana State Mineral Board be subsequently modified, cancelled or abrogated due to the existence of conflicting leases, operating agreements, private claims or other existing of future obligations or conditions which may affect all or any portion of the leased tract, it shall not relieve the Lessee of the obligation to pay any bonus due thereon to the Louisiana State Mineral Board, nor shall the Louisiana State Mineral Board be obligated to refund any

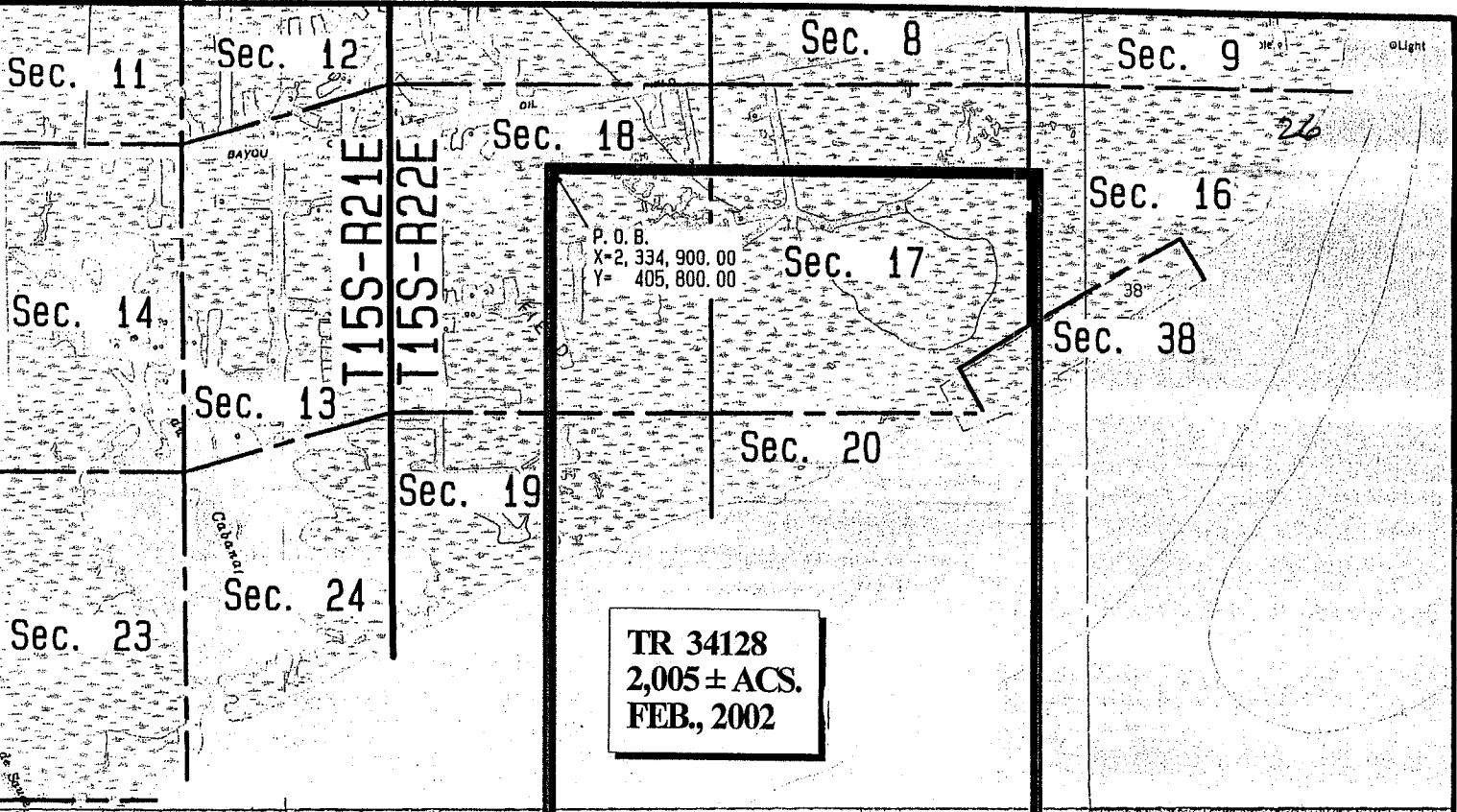


consideration paid by the Lessee prior to such modification, cancellation, or abrogation, including, but not limited to, bonuses, rents and royalties.

NOTE: The State of Louisiana does hereby reserve, and this lease shall be subject to, the imprescriptible right of surface use in the nature of a servitude in favor of the Department of Natural Resources, including its Offices and Commissions, for the sole purpose of implementing, constructing, servicing and maintaining approved coastal zone management and/or restoration projects. Utilization of any and all rights derived under this lease by the mineral lessee, its agents, successors or assigns, shall not interfere with nor hinder the reasonable surface use by the Department of Natural Resources, its Offices or Commissions, as hereinabove reserved.

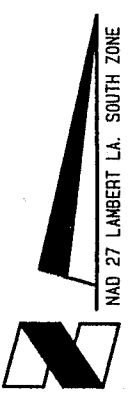
Applicant: Taylex, Inc.

Bidder	Cash Payment	Price / Acre	Rental	Oil	Gas	Other



**TR 34128**  
**2,005 ± ACS.**  
**FEB., 2002**

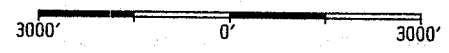
LAKE SALVADOR



NAD 27 LAMBERT LA. SOUTH ZONE

Topography obtained from USCGS Quadrangle  
 'BARATARI, LA.', 1973 Edition, 'CATAOUATCHE BAY, LA'  
 1963 Edition, Photorevised 1979, 'LAKE CATAOUATCHE EAST, LA'  
 1966 Edition, Photorevised 1972 & 1979, Photoinspected  
 1982, & 'LAKE CATAOUATCHE WEST, LA.', 1967 Edition,  
 Photorevised 1972 & 1979, Photoinspected 1983.

St. Charles Parish, Louisiana



**TRACT 34129 - Jefferson Parish, Louisiana**

All of the lands now or formerly constituting the beds and bottoms of all water bodies of every nature and description and all islands and other lands formed by accretion or reliction, except tax lands, owned by and not under mineral lease from the State of Louisiana on February 13, 2002, situated in Jefferson Parish, Louisiana, within the following described boundaries: Beginning at a point having Coordinates of X = 2,378,665.00 and Y = 391,950.00; thence East 4,800.00 feet to a point having Coordinates of X = 2,383,465.00 and Y = 391,950.00; thence South 33 degrees 30 minutes 00 seconds East 7,200.00 feet to a point having Coordinates of X = 2,387,438.95 and Y = 385,946.02; thence West 4,800.00 feet to a point having Coordinates of X = 2,382,638.95 and Y = 385,946.02; thence North 33 degrees 30 minutes 00 seconds West 7,200.00 feet to the point of beginning, **LESS AND EXCEPT** that portion of State Lease No. 391, as amended, that lies within the above described tract, containing approximately 79 acres, as shown outlined on a plat on file in the Office of Mineral Resources, Department of Natural Resources, as provided by the applicant. All bearings, distances and coordinates are based on Louisiana Coordinate System of 1927 (South Zone).

NOTE: The above description of the tract nominated for lease has been provided exclusively by the party nominating the tract for lease. The Louisiana State Mineral Board makes no representation as to the accuracy of the description of the nominated tract or its suitability for lease. The Louisiana State Mineral Board has made no inspection of the nominated tract for the existence of conflicting leases, operating agreements, private claims or other existing or future obligations or conditions which may affect all or any portion of the nominated tract or its suitability for lease.

Maps depicting the nominated tract, containing the bearings, distances and coordinates of the nominated tract based on the Louisiana Coordinate System of 1927, North or South Zone, as applicable, are available for public inspection and review at the offices of the Louisiana State Mineral Board from 10:00 a.m. to 3:00 p.m. Monday - Friday.

In the event of conflict between the description of the nominated tract set forth above and the description of the nominated property as contained on the maps maintained at the offices of the Louisiana State Mineral Board, the Louisiana State Mineral Board maps shall prevail and shall provide the final property description of the lease to be awarded of the nominated tract.

Any mineral lease of the nominated tract by the Louisiana State Mineral Board shall be without warranty of any kind, either express, implied, or statutory, including, but not limited to, the implied warranties or merchantability and fitness for a particular purpose. Should the mineral lease of the nominated tract awarded by the Louisiana State Mineral Board be subsequently modified, cancelled or abrogated due to the existence of conflicting leases, operating agreements, private claims or other existing of future obligations or conditions which may affect all or any portion of the leased tract, it shall not relieve the Lessee of the obligation to pay any bonus due thereon to the Louisiana State Mineral Board, nor shall the Louisiana State Mineral Board be obligated to refund any consideration paid by the Lessee prior to such modification,

cancellation, or abrogation, including, but not limited to, bonuses, rents and royalties.

NOTE: The State of Louisiana does hereby reserve, and this lease shall be subject to, the imprescriptible right of surface use in the nature of a servitude in favor of the Department of Natural Resources, including its Offices and Commissions, for the sole purpose of implementing, constructing, servicing and maintaining approved coastal zone management and/or restoration projects. Utilization of any and all rights derived under this lease by the mineral lessee, its agents, successors or assigns, shall not interfere with nor hinder the reasonable surface use by the Department of Natural Resources, its Offices or Commissions, as hereinabove reserved.

Applicant: Harold J. Anderson, Inc.

Bidder	Cash Payment	Price / Acre	Rental	Oil	Gas	Other

T169-R24E  
T169-R24E



X= 2,383,465.00  
Y= 391,950.00

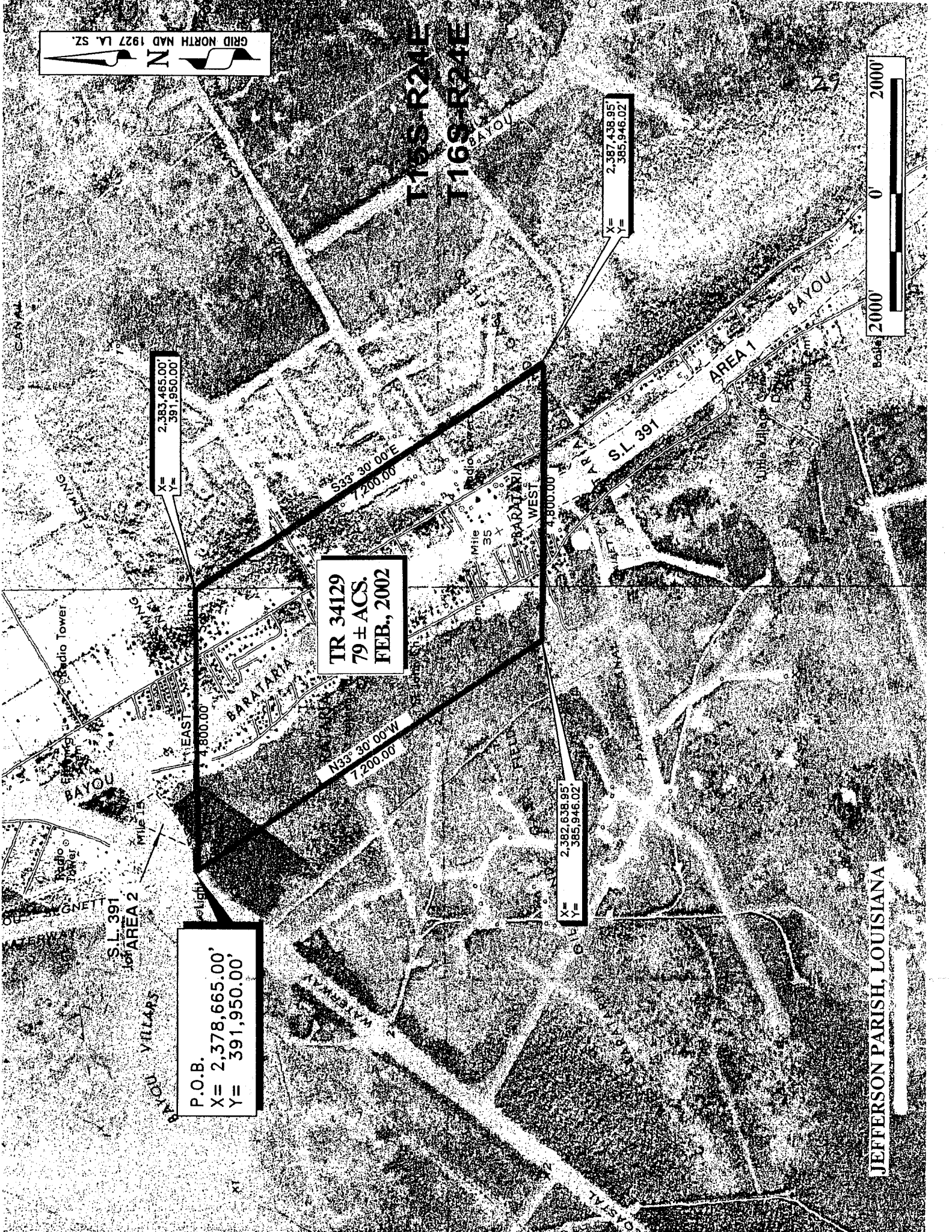
X= 2,387,438.95  
Y= 385,946.02

TR 34129  
79 ± ACS.  
FEB., 2002

P.O.B.  
X= 2,378,665.00  
Y= 391,950.00

X= 2,382,638.95  
Y= 385,946.02

JEFFERSON PARISH, LOUISIANA



**TRACT 34130 - Jefferson Parish, Louisiana**

All of the lands now or formerly constituting the beds and bottoms of all water bodies of every nature and description and all islands and other lands formed by accretion or reliction, except tax lands, owned by and not under mineral lease from the State of Louisiana on February 13, 2002, situated in Jefferson Parish, Louisiana, within the following described boundaries: Beginning at the Northeast corner of State Lease No. 15822, having Coordinates of  $X = 2,427,270.87$  and  $Y = 283,155.60$ ; thence East 7,861.14 feet to a point having coordinates of  $X = 2,435,132.01$  and  $Y = 283,155.60$ ; thence South 5,613.67 feet to the Northwest corner of State Lease No. 14534 having coordinates of  $X = 2,435,132.01$  and  $Y = 277,541.93$ ; thence South 2,009.62 feet along the west line of said State Lease No. 14534 to a point, said point also being the Northeast corner of State Lease No. 15631, having Coordinates of  $X = 2,435,132.02$  and  $Y = 275,532.31$ ; thence West 4,004.19 feet along the North line of said State Lease No. 15631 to its Northwest corner having Coordinates of  $X = 2,431,127.83$  and  $Y = 275,532.31$ ; thence North 2,047.84 feet to a point having Coordinates of  $X = 2,431,127.83$  and  $Y = 277,580.15$ ; thence West 3,856.97 feet to the Southeast corner of State Lease No. 15823 having Coordinates of  $X = 2,427,270.86$  and  $Y = 277,580.15$ ; thence North 295.45 feet along the East line of said State Lease No. 15823 to its Northeast corner, said corner also being the Southeast corner of said State Lease No. 15822, having Coordinates of  $X = 2,427,270.87$  and  $Y = 277,875.60$ ; thence North 5,280.00 feet along the east line of said State Lease No. 15822 to the point of beginning, containing 1,041 acres, as shown outlined on a plat on file in the Office of Mineral Resources, Department of Natural Resources, as provided by the applicant. All bearings, distances and coordinates are based on Louisiana Coordinate System of 1927 (South Zone).

NOTE: The above description of the tract nominated for lease has been provided exclusively by the party nominating the tract for lease. The Louisiana State Mineral Board makes no representation as to the accuracy of the description of the nominated tract or its suitability for lease. The Louisiana State Mineral Board has made no inspection of the nominated tract for the existence of conflicting leases, operating agreements, private claims or other existing or future obligations or conditions which may affect all or any portion of the nominated tract or its suitability for lease.

Maps depicting the nominated tract, containing the bearings, distances and coordinates of the nominated tract based on the Louisiana Coordinate System of 1927, North or South Zone, as applicable, are available for public inspection and review at the offices of the Louisiana State Mineral Board from 10:00 a.m. to 3:00 p.m. Monday - Friday.

In the event of conflict between the description of the nominated tract set forth above and the description of the nominated property as contained on the maps maintained at the offices of the Louisiana State Mineral Board, the Louisiana State Mineral Board maps shall prevail and shall provide the final property description of the lease to be awarded of the nominated tract.

Any mineral lease of the nominated tract by the Louisiana State Mineral Board shall be without warranty of any kind, either express, implied, or statutory, including, but not limited to, the implied warranties or merchantability and fitness for a particular purpose.

Should the mineral lease of the nominated tract awarded by the Louisiana State Mineral Board be subsequently modified, cancelled or abrogated due to the existence of conflicting leases, operating agreements, private claims or other existing of future obligations or conditions which may affect all or any portion of the leased tract, it shall not relieve the Lessee of the obligation to pay any bonus due thereon to the Louisiana State Mineral Board, nor shall the Louisiana State Mineral Board be obligated to refund any consideration paid by the Lessee prior to such modification, cancellation, or abrogation, including, but not limited to, bonuses, rents and royalties.

NOTE: The above tract is located in or near an oyster restricted area and all operations in such area must be conducted in strict conformity with the stipulations and/or regulations of the Louisiana Department of Wildlife and Fisheries.

NOTE: The State of Louisiana does hereby reserve, and this lease shall be subject to, the imprescriptible right of surface use in the nature of a servitude in favor of the Department of Natural Resources, including its Offices and Commissions, for the sole purpose of implementing, constructing, servicing and maintaining approved coastal zone management and/or restoration projects. Utilization of any and all rights derived under this lease by the mineral lessee, its agents, successors or assigns, shall not interfere with nor hinder the reasonable surface use by the Department of Natural Resources, its Offices or Commissions, as hereinabove reserved.

Applicant: P.L. Maloney

Bidder	Cash Payment	Price / Acre	Rental	Oil	Gas	Other



**P.O.B.**  
X = 2,427,270.87  
Y = 283,155.60

**TR 34130  
1,041 ± ACS.  
FEB., 2002**

T 19 S - R 24 E  
T 19 S - R 25 E

S.L. 14534

S.L. 15631  
RELEASED

S.L. 15631

S.L. 15823

S.L. 16328

BARATARIA

DAVE AND G S FIELD

WATER



**TRACT 34131 - PORTION OF BLOCK 48, MAIN PASS AREA, REVISED, Plaquemines Parish, Louisiana**

All of the lands now or formerly constituting the beds and bottoms of all water bodies of every nature and description and all islands and other lands formed by accretion or reliction, except tax lands, belonging to the State of Louisiana and not under mineral lease on February 13, 2002, situated in Plaquemines Parish, Louisiana, and more particularly described as follows: Beginning at a point on the North line of Block 48, Main Pass Area, Revised, having Coordinates of X = 2,640,050.00 and Y = 278,080.00, said point also being the Northeast corner of State Lease No. 16772; thence East 5,800.00 feet on and along said North line of said Block 48, Main Pass Area, Revised, to a point having Coordinates of X = 2,645,850.00 and Y = 278,080.00, said point also being on the Western boundary of State Lease No. 16773; thence on and along said western boundary of said State Lease No. 16773 the following courses and distances, to-wit: South 52 degrees 07 minutes 30 seconds West 1,900.29 feet to a point having Coordinates of X = 2,644,350.00 and Y = 276,913.33; and South 7,533.33 feet to a point having Coordinates of X = 2,644,350.00 and Y = 269,380.00, said point also being on the Northern boundary of State Lease No. 16924; thence on and along the Northern, Western and Southern boundaries of said State Lease No. 16924 the following courses and distances, to-wit: West 1,100.00 feet to a point having Coordinates of X = 2,643,250.00 and Y = 269,380.00; South 3,300.00 feet to a point having Coordinates of X = 2,643,250.00 and Y = 266,080.00; and East 4,100.00 feet to a point having Coordinates of X = 2,647,350.00 and Y = 266,080.00, said point also being on the East line of said Block 48, Main Pass Area, Revised; thence South 950.00 feet on and along said East line of said Block 48, Main Pass Area, Revised, to a point having Coordinates of X = 2,647,350.00 and Y = 265,130.00, said point also being on the Northern boundary of State Lease No. 16925; thence on and along said Northern boundary of said State Lease No. 16925 the following courses and distances, to-wit: West 3,460.00 feet to a point having Coordinates of X = 2,643,890.00 and Y = 265,130.00; North 54 degrees 31 minutes 57 seconds West 4,739.42 feet to a point having Coordinates of X = 2,640,030.00 and Y = 267,880.00; and South 53 degrees 00 minutes 00 seconds West 1,777.26 feet to a point having Coordinates of X = 2,638,610.62 and Y = 266,810.42; thence West 3,260.62 feet to a point having Coordinates of X = 2,635,350.00 and Y = 266,810.42, said point also being on the West line of said Block 48, Main Pass Area, Revised; thence North 2,569.58 feet on and along said West line of said Block 48, Main Pass Area, Revised, to a point having Coordinates of X = 2,635,350.00 and Y = 269,380.00, said point also being on the Southern boundary of State Lease No. 16772; thence on and along the Southern and Eastern boundaries of said State Lease No. 16772 the following courses and distances, to-wit: East 4,700.00 feet to a point having Coordinates of X = 2,640,050.00 and Y = 269,380.00; and North 8,700.00 feet to the point of beginning, containing approximately **1,419.29 gross acres and 1,402.20 net acres**, as shown outlined on a plat on file in the Office of Mineral Resources, Department of Natural Resources, as provided by the applicant. All bearings, distances and coordinates are based on Louisiana Coordinate System of 1927 (South Zone).

NOTE: The above description of the tract nominated for lease has been provided exclusively by the party nominating the tract for lease. The Louisiana State Mineral Board makes no representation as to the accuracy of the description of the nominated tract or its

suitability for lease. The Louisiana State Mineral Board has made no inspection of the nominated tract for the existence of conflicting leases, operating agreements, private claims or other existing or future obligations or conditions which may affect all or any portion of the nominated tract or its suitability for lease.

Maps depicting the nominated tract, containing the bearings, distances and coordinates of the nominated tract based on the Louisiana Coordinate System of 1927, North or South Zone, as applicable, are available for public inspection and review at the offices of the Louisiana State Mineral Board from 10:00 a.m. to 3:00 p.m. Monday - Friday.

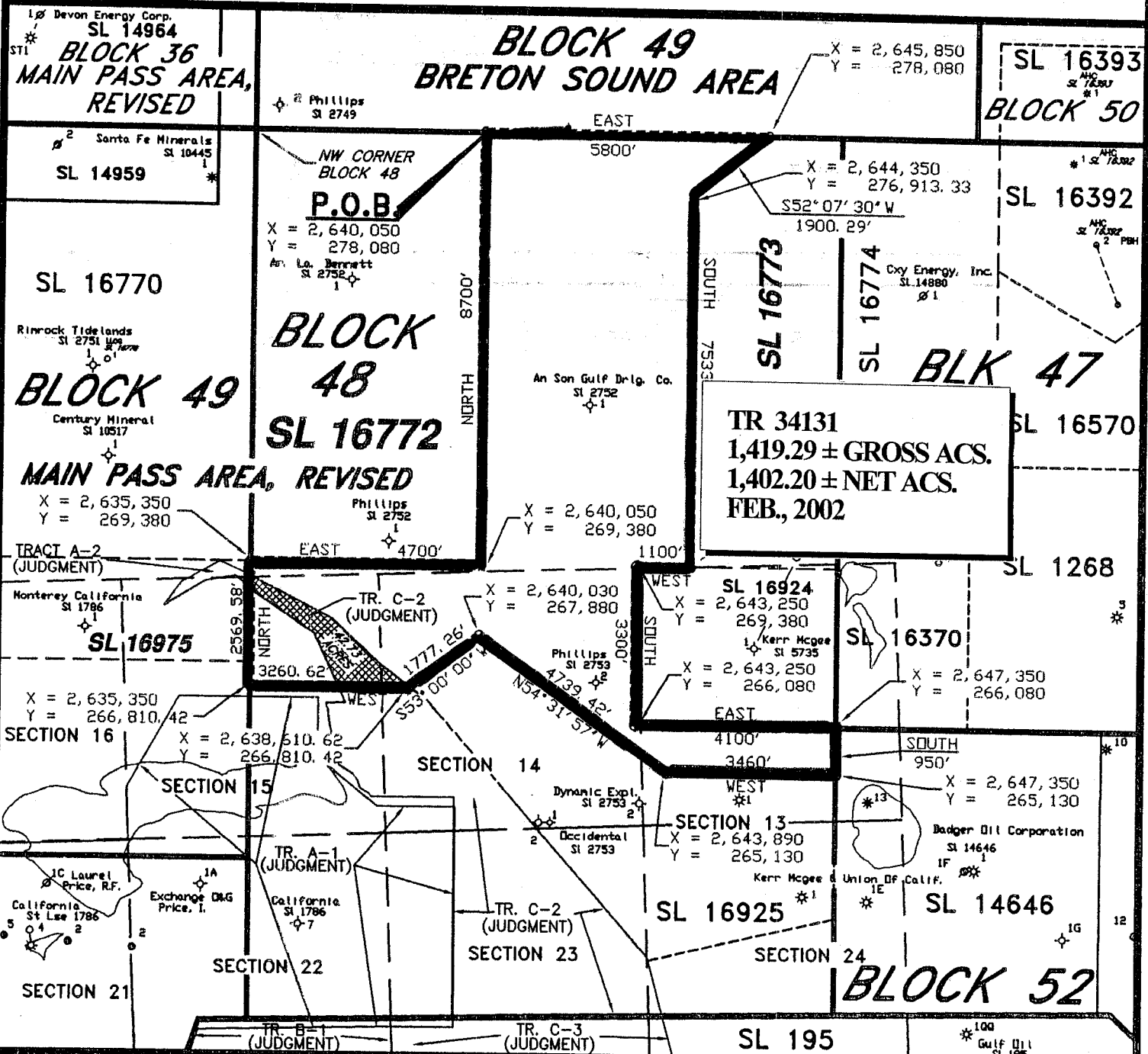
In the event of conflict between the description of the nominated tract set forth above and the description of the nominated property as contained on the maps maintained at the offices of the Louisiana State Mineral Board, the Louisiana State Mineral Board maps shall prevail and shall provide the final property description of the lease to be awarded of the nominated tract.

Any mineral lease of the nominated tract by the Louisiana State Mineral Board shall be without warranty of any kind, either express, implied, or statutory, including, but not limited to, the implied warranties or merchantability and fitness for a particular purpose. Should the mineral lease of the nominated tract awarded by the Louisiana State Mineral Board be subsequently modified, cancelled or abrogated due to the existence of conflicting leases, operating agreements, private claims or other existing or future obligations or conditions which may affect all or any portion of the leased tract, it shall not relieve the Lessee of the obligation to pay any bonus due thereon to the Louisiana State Mineral Board, nor shall the Louisiana State Mineral Board be obligated to refund any consideration paid by the Lessee prior to such modification, cancellation, or abrogation, including, but not limited to, bonuses, rents and royalties.

NOTE: The State of Louisiana does hereby reserve, and this lease shall be subject to, the imprescriptible right of surface use in the nature of a servitude in favor of the Department of Natural Resources, including its Offices and Commissions, for the sole purpose of implementing, constructing, servicing and maintaining approved coastal zone management and/or restoration projects. Utilization of any and all rights derived under this lease by the mineral lessee, its agents, successors or assigns, shall not interfere with nor hinder the reasonable surface use by the Department of Natural Resources, its Offices or Commissions, as hereinabove reserved.

Applicant: Robert A. Schroeder, Inc.

Bidder	Cash Payment	Price / Acre	Rental	Oil	Gas	Other



(JUDGMENT) DENOTES A JUDGMENT BY THE DISTRICT COURT OF THE UNITED STATES, EASTERN DISTRICT OF LOUISIANA, NEW ORLEANS DIVISION, TITLED ISAAC R. PRICE, et al vs. GULF REFINING Co., et al A COPY OF WHICH IS RECORDED IN COB 243, PAGE 600 OF THE CLERK OF COURT RECORDS OF PLAQUEMINES PARISH, LOUISIANA.

	GROSS ACRES	NET ACRES
WATER:	1376.56 ACRES	1376.56 ACRES
PRICE CASE (60% STATE):	42.73 ACRES	25.64 ACRES
TOTAL:	1419.29 ACRES	1402.20 ACRES

LOCATED IN  
BLOCK 48  
MAIN PASS AREA, REVISED  
PLAQUEMINES PARISH, LOUISIANA  
SCALE 1" = 3000'



ALL COORDINATES, BEARINGS AND DISTANCES ARE GRID, AND ARE ON THE LOUISIANA LAMBERT PLANE COORDINATE SYSTEM, SOUTH ZONE, 1927 NORTH AMERICAN DATUM.